

FIELD

T 57 N-R 25+26 W

MINING  
TRANSIT BOOK

T 57 N  
R 25 W  
CCC 26

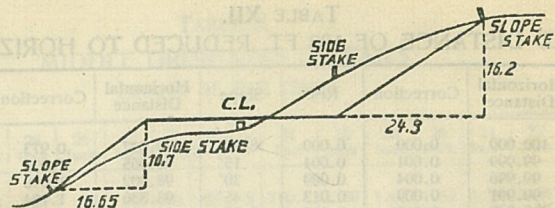
CCC #83

TABLES FOR EXCAVATIONS AND EMBANKMENTS.

DISTANCES FROM CENTER OF ROADWAY FOR CROSS-SECTIONING.  
ROADWAY 18 FEET WIDE. SIDE SLOPES 1 TO 1.  
FOR SINGLE TRACK EXCAVATION.

	0	.1	.2	.3	.4	.5	.6	.7	.8	.9	
0	9.0	9.1	9.2	9.3	9.4	9.5	9.6	9.7	9.8	9.9	0
1	10.0	10.1	10.2	10.3	10.4	10.5	10.6	10.7	10.8	10.9	1
2	11.0	11.1	11.2	11.3	11.4	11.5	11.6	11.7	11.8	11.9	2
3	12.0	12.1	12.2	12.3	12.4	12.5	12.6	12.7	12.8	12.9	3
4	13.0	13.1	13.2	13.3	13.4	13.5	13.6	13.7	13.8	13.9	4
5	14.0	14.1	14.2	14.3	14.4	14.5	14.6	14.7	14.8	14.9	5
6	15.0	15.1	15.2	15.3	15.4	15.5	15.6	15.7	15.8	15.9	6
7	16.0	16.1	16.2	16.3	16.4	16.5	16.6	16.7	16.8	16.9	7
8	17.0	17.1	17.2	17.3	17.4	17.5	17.6	17.7	17.8	17.9	8
9	18.0	18.1	18.2	18.3	18.4	18.5	18.6	18.7	18.8	18.9	9
10	19.0	19.1	19.2	19.3	19.4	19.5	19.6	19.7	19.8	19.9	10
11	20.0	20.1	20.2	20.3	20.4	20.5	20.6	20.7	20.8	20.9	11
12	21.0	21.1	21.2	21.3	21.4	21.5	21.6	21.7	21.8	21.9	12
13	22.0	22.1	22.2	22.3	22.4	22.5	22.6	22.7	22.8	22.9	13
14	23.0	23.1	23.2	23.3	23.4	23.5	23.6	23.7	23.8	23.9	14
15	24.0	24.1	24.2	24.3	24.4	24.5	24.6	24.7	24.8	24.9	15
16	25.0	25.1	25.2	25.3	25.4	25.5	25.6	25.7	25.8	25.9	16
17	26.0	26.1	26.2	26.3	26.4	26.5	26.6	26.7	26.8	26.9	17
18	27.0	27.1	27.2	27.3	27.4	27.5	27.6	27.7	27.8	27.9	18
19	28.0	28.1	28.2	28.3	28.4	28.5	28.6	28.7	28.8	28.9	19
20	29.0	29.1	29.2	29.3	29.4	29.5	29.6	29.7	29.8	29.9	20
21	30.0	30.1	30.2	30.3	30.4	30.5	30.6	30.7	30.8	30.9	21
22	31.0	31.1	31.2	31.3	31.4	31.5	31.6	31.7	31.8	31.9	22
23	32.0	32.1	32.2	32.3	32.4	32.5	32.6	32.7	32.8	32.9	23
24	33.0	33.1	33.2	33.3	33.4	33.5	33.6	33.7	33.8	33.9	24
25	34.0	34.1	34.2	34.3	34.4	34.5	34.6	34.7	34.8	34.9	25
26	35.0	35.1	35.2	35.3	35.4	35.5	35.6	35.7	35.8	35.9	26
27	36.0	36.1	36.2	36.3	36.4	36.5	36.6	36.7	36.8	36.9	27
28	37.0	37.1	37.2	37.3	37.4	37.5	37.6	37.7	37.8	37.9	28
29	38.0	38.1	38.2	38.3	38.4	38.5	38.6	38.7	38.8	38.9	29
30	39.0	39.1	39.2	39.3	39.4	39.5	39.6	39.7	39.8	39.9	30
31	40.0	40.1	40.2	40.3	40.4	40.5	40.6	40.7	40.8	40.9	31
32	41.0	41.1	41.2	41.3	41.4	41.5	41.6	41.7	41.8	41.9	32
33	42.0	42.1	42.2	42.3	42.4	42.5	42.6	42.7	42.8	42.9	33
34	43.0	43.1	43.2	43.3	43.4	43.5	43.6	43.7	43.8	43.9	34
35	44.0	44.1	44.2	44.3	44.4	44.5	44.6	44.7	44.8	44.9	35
36	45.0	45.1	45.2	45.3	45.4	45.5	45.6	45.7	45.8	45.9	36

1940  
 Mr Johnson  
 6-24-92  
 KW



**DISTANCES FROM SIDE STAKES FOR CROSS-SECTIONING.**

SLOPE 1 1/2 TO 1. ROADWAY OF ANY WIDTH.

	0	.1	.2	.3	.4	.5	.6	.7	.8	.9	
0	0.00	0.15	0.30	0.45	0.60	0.75	0.90	1.05	1.20	1.35	0
1	1.50	1.65	1.80	1.95	2.10	2.25	2.40	2.55	2.70	2.85	1
2	3.00	3.15	3.30	3.45	3.60	3.75	3.90	4.05	4.20	4.35	2
3	4.50	4.65	4.80	4.95	5.10	5.25	5.40	5.55	5.70	5.85	3
4	6.00	6.15	6.30	6.45	6.60	6.75	6.90	7.05	7.20	7.35	4
5	7.50	7.65	7.80	7.95	8.10	8.25	8.40	8.55	8.70	8.85	5
6	9.00	9.15	9.30	9.45	9.60	9.75	9.90	10.05	10.20	10.35	6
7	10.50	10.65	10.80	10.95	11.10	11.25	11.40	11.55	11.70	11.85	7
8	12.00	12.15	12.30	12.45	12.60	12.75	12.90	13.05	13.20	13.35	8
9	13.50	13.65	13.80	13.95	14.10	14.25	14.40	14.55	14.70	14.85	9
10	15.00	15.15	15.30	15.45	15.60	15.75	15.90	16.05	16.20	16.35	10
11	16.50	16.65	16.80	16.95	17.10	17.25	17.40	17.55	17.70	17.85	11
12	18.00	18.15	18.30	18.45	18.60	18.75	18.90	19.05	19.20	19.35	12
13	19.50	19.65	19.80	19.95	20.10	20.25	20.40	20.55	20.70	20.85	13
14	21.00	21.15	21.30	21.45	21.60	21.75	21.90	22.05	22.20	22.35	14
15	22.50	22.65	22.80	22.95	23.10	23.25	23.40	23.55	23.70	23.85	15
16	24.00	24.15	24.30	24.45	24.60	24.75	24.90	25.05	25.20	25.35	16
17	25.50	25.65	25.80	25.95	26.10	26.25	26.40	26.55	26.70	26.85	17
18	27.00	27.15	27.30	27.45	27.60	27.75	27.90	28.05	28.20	28.35	18
19	28.50	28.65	28.80	28.95	29.10	29.25	29.40	29.55	29.70	29.85	19
20	30.00	30.15	30.30	30.45	30.60	30.75	30.90	31.05	31.20	31.35	20
21	31.50	31.65	31.80	31.95	32.10	32.25	32.40	32.55	32.70	32.85	21
22	33.00	33.15	33.30	33.45	33.60	33.75	33.90	34.05	34.20	34.35	22
23	34.50	34.65	34.80	34.95	35.10	35.25	35.40	35.55	35.70	35.85	23
24	36.00	36.15	36.30	36.45	36.60	36.75	36.90	37.05	37.20	37.35	24
25	37.50	37.65	37.80	37.95	38.10	38.25	38.40	38.55	38.70	38.85	25
26	39.00	39.15	39.30	39.45	39.60	39.75	39.90	40.05	40.20	40.35	26
27	40.50	40.65	40.80	40.95	41.10	41.25	41.40	41.55	41.70	41.85	27
28	42.00	42.15	42.30	42.45	42.60	42.75	42.90	43.05	43.20	43.35	28
29	43.50	43.65	43.80	43.95	44.10	44.25	44.40	44.55	44.70	44.85	29
30	45.00	45.15	45.30	45.45	45.60	45.75	45.90	46.05	46.20	46.35	30
31	46.50	46.65	46.80	46.95	47.10	47.25	47.40	47.55	47.70	47.85	31
32	48.00	48.15	48.30	48.45	48.60	48.75	48.90	49.05	49.20	49.35	32
33	49.50	49.65	49.80	49.95	50.10	50.25	50.40	50.55	50.70	50.85	33
34	51.00	51.15	51.30	51.45	51.60	51.75	51.90	52.05	52.20	52.35	34
35	52.50	52.65	52.80	52.95	53.10	53.25	53.40	53.55	53.70	53.85	35
36	54.00	54.15	54.30	54.45	54.60	54.75	54.90	55.05	55.20	55.35	36
37	55.50	55.65	55.80	55.95	56.10	56.25	56.40	56.55	56.70	56.85	37
38	57.00	57.15	57.30	57.45	57.60	57.75	57.90	58.05	58.20	58.35	38
39	58.50	58.65	58.80	58.95	59.10	59.25	59.40	59.55	59.70	59.85	39
40	60.00	60.15	60.30	60.45	60.60	60.75	60.90	61.05	61.20	61.35	40
41	61.50	61.65	61.80	61.95	62.10	62.25	62.40	62.55	62.70	62.85	41
42	63.00	63.15	63.30	63.45	63.60	63.75	63.90	64.05	64.20	64.35	42
43	64.50	64.65	64.80	64.95	65.10	65.25	65.40	65.55	65.70	65.85	43
44	66.00	66.15	66.30	66.45	66.60	66.75	66.90	67.05	67.20	67.35	44
45	67.50	67.65	67.80	67.95	68.10	68.25	68.40	68.55	68.70	68.85	45
46	69.00	69.15	69.30	69.45	69.60	69.75	69.90	70.05	70.20	70.35	46
47	70.50	70.65	70.80	70.95	71.10	71.25	71.40	71.55	71.70	71.85	47
48	72.00	72.15	72.30	72.45	72.60	72.75	72.90	73.05	73.20	73.35	48
49	73.50	73.65	73.80	73.95	74.10	74.25	74.40	74.55	74.70	74.85	49
50	75.00	75.15	75.30	75.45	75.60	75.75	75.90	76.05	76.20	76.35	50

Miscellaneous Notes and Memos

- ① First 36 pages contain notes of Twp. 57N. R25W
- ② The last 36 pages contain notes of Twp. 57N. R26W

Handwritten notes on the right page, including some faint markings and numbers like '24 95-98'.

1.

1/8" N.P. Post  
51

County Corner. 1" x 8" Iron Pipe

B.T.s. W. Pine Stamp W. Pine Stamp

N 79° E 29 1/2 k 58° E 39 1/2 k.

1/16 #1  
s. 1

1/4 36  
1

1/16 #2  
s. 1

1/8" N.P. Post  
35 3/16  
1/8" N.P. Post  
27 1/16  
B.T. 8" Tamarack stub N 66° E. 20 k

G.L.O. 2" x 3' scribed Tamarack Post

1/16 #3  
s. 1

1/16 #4  
s. 1

1/16 #5  
s. 1

1/16 #6  
s. 1

1/16 #7  
s. 1

1/4  
176

County Corner 1" x 24" Iron Pipe

No sign of B.T.s. 2" x 30" Aspen Post

1/16 #8  
s. 1

S.M.C.  
s. 1

5 1/2 20' W  
40.00

o

40.00

o

S.M.C.  
s. 1

S.M.C.  
s. 1

North  
39.75

39.75

1/16 #9  
S. 1

1/4  
2+1

1/16 #10  
S. 1/2

1/16 #11  
S. 1/2

S.M.C  
S. 1

S.M.C  
S. 1

S.M.C  
S. 1

S.M.C  
S. 1

1/16 #13  
S. 1

1/16 #14  
S. 1

1/16 #15  
S. 1

1/4  
12

1/4  
12

County Corner. 1" x 24" Iron Pipe. No B.T's.

MC/1  
12

1/12 MC

1/12 MC

10  
Ab  
Flange  
Ab  
Ab  
2  
mb  
mb  
mb  
mb  
mb

2

Handwritten notes in the left margin of the left page, including the number '2' and some illegible scribbles.

2

5/10/11

70.00

0

0

8

8-10-  
11-12-13

8

$$\frac{15 \text{ DN R252}}{2 \text{ 11}} \\ 11/12$$

$$\frac{2}{11} \text{ MC}$$

$$\frac{2}{11} \text{ MC}$$

$$\frac{2}{11}$$

$$\frac{1}{6} \# 2 \\ 5.11$$

$$\frac{15 \text{ DN R252}}{3 \text{ 12}} \\ 10/11$$

$$\frac{1}{6} \# 3 \\ 5.11$$

$$\frac{1}{6} \# 4 \\ 5.11$$

$$\frac{1}{6} \# 5 \\ 5.11$$

$$\frac{1}{6} \# 6 \\ 5.11$$

$$\frac{1}{6} \# 7 \\ 5.11$$

$$\frac{1}{4} \text{ WC} \\ 11 \text{ 12}$$

$$\frac{1}{6} \# 8 \\ 5.11$$

$$\frac{1}{4} \\ 5.11$$

Jan 14 1980 11:50 AM  
By [unclear] [unclear]  
[unclear] [unclear]

11  
14.70  
1980  
5.3.91  
0



11

1/8 #9  
5.111/4  
10 + 121/8 #10  
5.111/8 #11  
5.111/8 #12  
5.111/8 #13  
5.111/8 #14  
5.111/8 #15  
11.12  
17.131/8 #15  
5.11

1/4 #17

1/8 #16  
5.111/8 #17  
12.13  
13.14M.C.  
11/12

Gih.O. B.T. 12" Dead White Pine

Approx. Cherry Post N 45° E 15 kts.

Set by A. Johnson from B.T. 12/4/39

11

11/12 Gih.O. B.T. 8" Dead White Pine  
 M.C. Approx. Tamarack Post S 17° E 16 kts.  
 Set 12/4/39 by A. Johnson from old B.T.

12  
1/6  
12/7  
TOWN  
RANGE

County Corner 1" X 24" Iron Pipe  
No sign of B.T.s.

1/6 #1  
S.12

1/4 1/12

M.C. 1/12

1/12 M.C.

2 1/12

11/12  
M.C.

M.C.  
11/12

1/6 #3  
S.12

1/6 #4  
S.12

1/6 #5  
S.12

1/6 #6  
S.12

S.M.C.  
S.12

S.M.C.  
S.12

80.34

N. 40° 35' E

1/6 #7  
S.12

1/4  
12/7

S.M.C.  
S.12

S.M.C.  
S.12

12

1/6 #8  
5.12

C. 1/4  
5.12

1/6 #9  
5.12

1/2 W.C.  
11/12

1/6 #10  
5.12

1/6 #11  
5.12

1/6 #12  
5.12

1/6 #13  
5.12

S.M.C.  
5.12

S.M.C.  
5.12

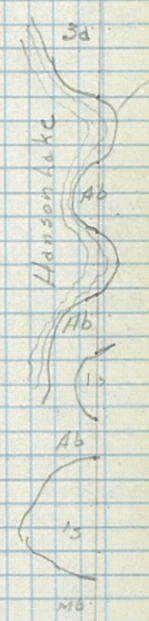
1/6 #14  
5.12

12/17 County Corner No Post as it falls in road.  
13/18 14" R. Pine 14" R. Pine 14" R. Pine  
B.T.s 5120W 791ks N59°W 1981ks N20°W 1251ks

1/6 #15  
5.12

1/2 12/23 F.S. Approx. Post set from County B.T.  
B.T. 12" R. Pine N11°W 1101ks. 4" x 25" Aspen Post

12



1/6 #16  
5.12

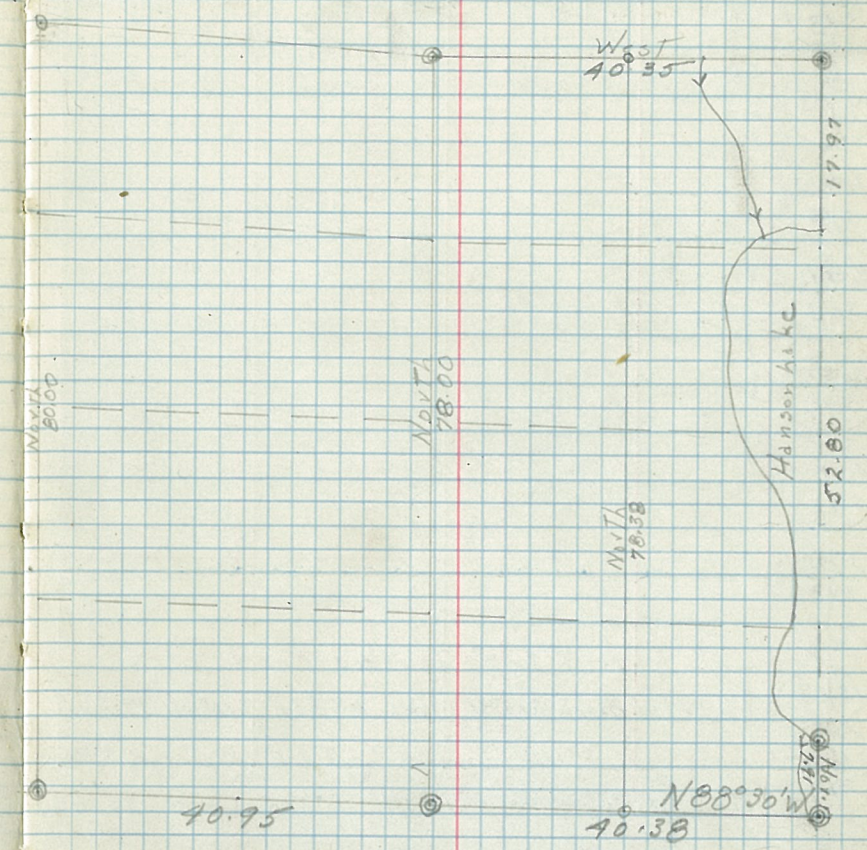
S.M.C.  
5.12

1/2 R. 12/23  
11/12  
17/13

13  
13/2  
13/18

County Corner Post in E of Road  
14" R. Pine 14" R. Pine 14" R. Pine  
B. T. 512°W 791k N59°W 981k N30°W 1251k

- 1/6 #1 5.13
- 14/2 13
- 1/6 #2 5.13
- 11/2 14/13
- 1/6 #3 5.13
- 1/6 #4 5.13
- 1/6 #5 5.13
- 1/6 #6 5.13
- S.M.C. 5.13
- 13/18 M.C.
- S.M.C. 5.13
- 1/6 #8 5.13
- C 1/4 5.13



13  
1/6 #9  
S. 13

1/4  
14 #13

1/6 #10  
S. 13

1/6 #11  
S. 13

1/6 #12  
S. 13

1/6 #15  
S. 13

S. M.C.  
S. 13

M.C. County Cor. 3" X 20" Scribed Post.

13/18 B.T's. 17" W Birch 585°W 1111ks 16" Elm 510°W 1171ks.

13/18 County Cor. 3" X 12" Scribed Post + 1" X 6" Iron Pipe

29/19 B.T's. 10" Balsam N80°W 291ks, 7" Ash S. 10°W. 331ks

1/6 #15 F.S. Approx.

2/13

1/4 13 County Cor. Original Post Nailed to side of New Post

24 B.T's. 11" Aspen 562°E 991ks, 16" W Spruce N75°W 1761ks

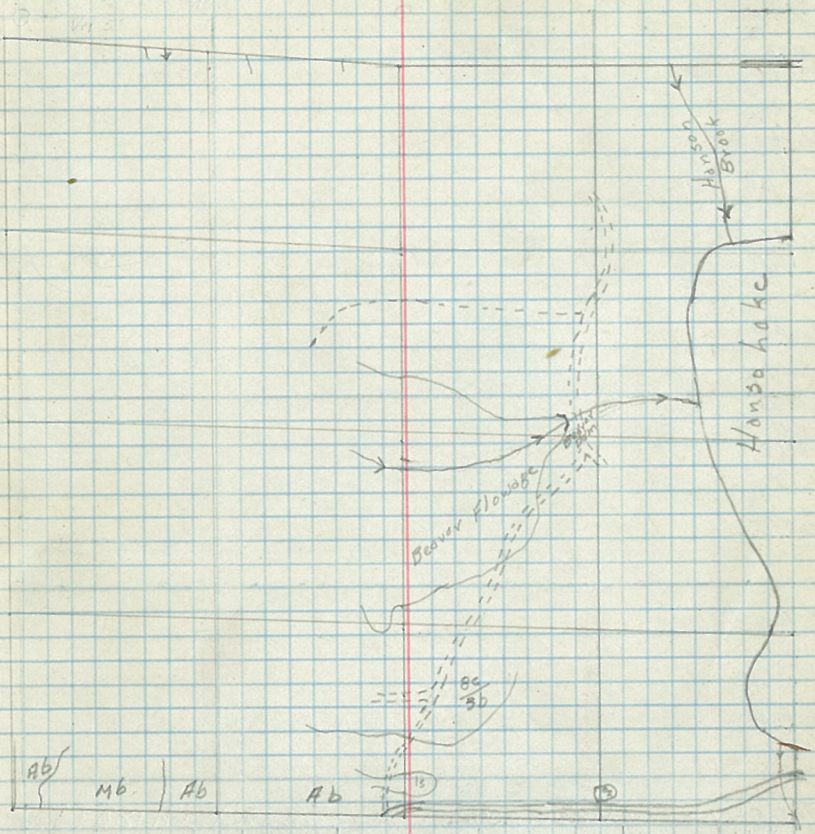
1/6 #16  
S. 13

14/13 F.S. Post set from County Bearing Trees.

23/24 B.T's. 14" R. Pine 10" Oak 8" R. Pine Form 4580

S 160°E 595°E 585°W 6" Aspen

2101ks 1821ks 1031ks N97°W 341ks



$\frac{2}{12}$   
 $\frac{14}{13}$

$\frac{1}{6}\#1$   
 S.14

$\frac{1}{4}$   $\frac{11}{14}$

$\frac{1}{6}\#2$   
 S.14

$\frac{10}{11}$   
 $\frac{13}{19}$

$\frac{1}{6}\#3$   
 S.14

$\frac{1}{6}\#4$   
 S.14

$\frac{1}{6}\#5$   
 S.14

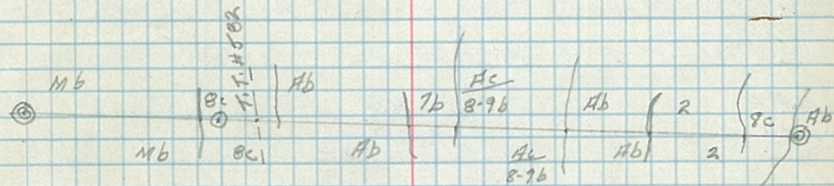
$\frac{1}{6}\#6$   
 S.14

$\frac{1}{6}\#7$   
 S.14

$\frac{1}{4}$   
 $\frac{14}{13}$

$\frac{1}{6}\#8$   
 S.14

$\frac{C}{1/2}$   
 S.14



14

1/16 #9

5.14

1/16 #10

5.14

1/16 #11

5.14

1/16 #12

5.14

1/16 #13

5.14

1/16 #14

5.14

1/16 #15

5.14

1/16 #16

5.14

1/16 #17

5.14

1/16 #18

5.14

1/16 #19

5.14

1/16 #20

5.14

1/16 #21

5.14

1/16 #22

5.14

1/16 #23

5.14

1/16 #24

5.14

F.S. Approx Post set from County B.T.S. Farm 458 6" Aspen 591ks  
 B.T.S. 14" R. Pine 5.18E 210ks, 1d' oak 595E 182ks, 8" R. Pine 585W.

1/16 #15

5.14

1/16 #17

5.14

1/16 #16

5.14

1/16 #20

5.14

1/16 #21

5.14

1/16 #22

5.14

1/16 #23

5.14

1/16 #24

5.14

County Cor. 3" X 36" scribed S. Pine Post. 3 1/2" X 2" I.P.

B.T.S. 6" R. Pine 6" R. Pine 8" R. Pine Aspen Stamp

South East N61°E N77°W

11ks 21ks 30ks 15ks

N 88° W  
80.35

857N R22  
10/11  
15/4

1/6 #1  
5.15

1/4 10  
15

1/6 #2  
5.15

857N R23  
9/10  
16/15

16/15  
M.C.

S.M.C.  
5.15

S.M.C.  
5.15

S.M.C.  
5.15

S.M.C.  
5.15

S.M.C.  
5.15

1/6 #6  
5.15

1/6 #7  
5.15

① ② ③ ④ ⑤  
9.41 9.00 9.43

1/890W



1/4  
15714

1/16 #8  
5.15

S.M.C.  
5.15

S.M.C.  
5.15

S.M.C.  
5.15

S.M.C.  
5.15

1/16 #13  
5.15

1/16 #14  
5.15

1/4 #25  
R 1514  
23/23  
County Corner. 3" x 36" Scribed S. Pine Post. 3/4" x 3" Iron Pipe  
6" R. Pine 6" R. Pine 8" R. Pine Aspen Stump  
SOUTH 11ks EAST 2 1/2ks N61°E 30ks N77°W 15 1/2ks  
B.Ts.

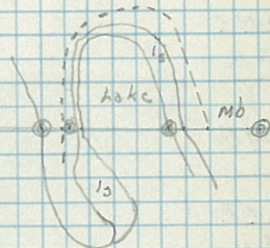
MC/15  
132  
County Post set from Original B.L.O. B.T.  
3" x 30" scribed Post. B.T. 6" Dry Cedar N.75°E. 8 1/2ks.

15 M.C.  
121

1/16 #15 County Cor. 2" x 36" Scribed R. Pine Post. 3/4" x 4" Iron Pipe  
5.15 B.T's. 13" Cedar N.36°E. 6 1/2ks. 8" Cedar. N.18°W 11 1/2ks

MC/15  
122  
County Cor. 3" x 36" R. Pine Post. 3 sided Iron Pin 1/2" x 1/2"  
B.Ts. 6" W. Birch N.18°E 5 1/2ks 10" N. Spruce S. 49°E 12 1/2ks

Wabana  
Lake



$\frac{9}{16}$  1252  
 9 10  
 16/15

M.C. 19  
16

$\frac{9}{16}$  / M.C.

$\frac{8}{17}$  1252  
 8 19  
 17/16

$\frac{1}{2}$  #3  
 5.16

S.M.C.  
5.16

$\frac{16}{15}$   
 M.C.

S.M.C.  
5.16

$\frac{1}{2}$   
 17/16

$\frac{1}{2}$  #10  
 5.16

$\frac{17}{16}$   
 M.C.

$\frac{1}{2}$  #11  
 5.16

S.M.C.  
5.16

16

S.M.C

S.11

16/

21/MC

M.C/16

/21

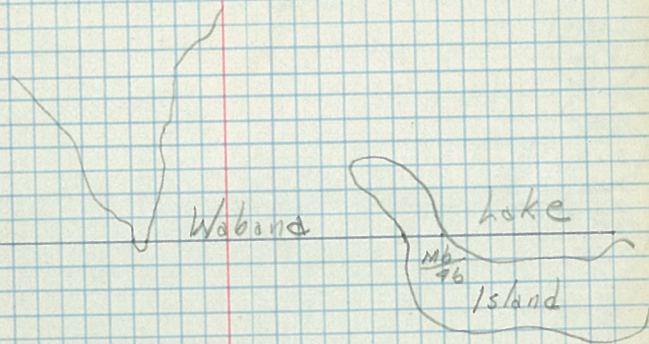
16/

21/M.C

~~16~~

M.C.21

16



$$\begin{array}{r} 59N432W \\ 819 \\ 17/16 \end{array}$$

$$\begin{array}{r} 1/6 \# 1 \\ 5.17 \end{array}$$

$$\begin{array}{r} 81 \\ 17/M.C. \end{array}$$

$$\begin{array}{r} M.C. 18 \\ 17 \end{array}$$

$$\begin{array}{r} 59N432W \\ 718 \\ 18/17 \end{array}$$

$$\begin{array}{r} 18/17 \\ M.C. \end{array}$$

$$\begin{array}{r} S.M.C. \\ 5.17 \end{array}$$

$$\begin{array}{r} 1/6 \# 6 \\ 5.17 \end{array}$$

$$\begin{array}{r} 1/6 \# 7 \\ 5.17 \end{array}$$

$$\begin{array}{r} 1/4 \\ 17/16 \end{array}$$

$$\begin{array}{r} 1/6 \# 8 \\ 5.17 \end{array}$$

$$\begin{array}{r} C/2 W.C. \\ 5.17 \end{array}$$

$$\begin{array}{r} M.C. \\ 18/17 \end{array}$$

Blue Water  
Lake

15.08

58.35

Wabano  
Lake

18/17  
M.C.

5.M.C.  
5.17

1/6 #12  
5.17

1/6 #13  
5.17

1/6 #14  
5.17

17/18  
M.C.

17/M.C.  
20

1/6 #15  
5.17

1/4 17  
20

M.C./17  
126

G.L.O. Corner. 3" X 30" Scribed Post.

B.T.'s. 8" R.P. Inc. Stk 5980E 14Ks. 6" Aspen Stk N170W 14Ks.

F.S. Approx. Cor. 2" X 36" Cedar Post.

Blue water  
Lake

80  
mb

Mb

Mb

Mb

40

85

Wabano  
Lake

40

18  
RAIN RAIN  
2/18  
18/17

1/6 #1  
5.18

1/4 7/18

1/6 #2  
5.18

RAIN RAIN  
12/17  
15/18  
RAIN RAIN

13/18  
MC

S.M.C.  
5.18

S.M.C.  
5.18

1/6 #5  
5.18

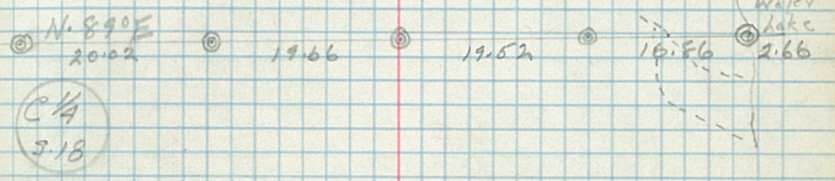
1/5 #6  
5.18

1/6 #7  
5.18

M.C.  
18/17

S.M.C.  
5.18

1/6 #8  
5.18



1/6 #9  
S.1B

S.M.C.  
S.1B

S.M.C.  
S.1B

M.C.  
13/18

1/6 #10  
S.1B

1/6 #11  
S.1B

1/6 #12  
S.1B

1/6 #13  
S.1B

1/6 #14  
S.1B

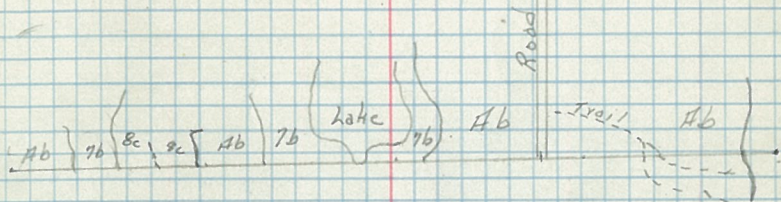
M.C.  
18/17

18/17  
M.C.

18/14.C. County Cor. 37x36 Cedar Post 3/4"x6" Iron Pipe  
B.T's. 12" Aspen 8" Cedar  
59°W 261ks N77°W 291ks

1/6 #15 County Cor. 3"x36" Scribed Aspen Post 1"x8" Iron Pipe  
S.1B B.T's. 8" Aspen 8" Aspen  
56°W 51ks N19°W 581ks

1/4 18° County Cor. 3/4"x1" Iron Pipe. Approx. Post.  
19° B.T's. 10" R. Pine 56°W 279ks. 14" R. Pine 518°E 2761ks.



1/6 #16 County Cor. 2"x36" Scribed Post & 3/4"x8" Iron Pipe  
S.1B B.T's. 8" Aspen N16°W 381ks 12" Aspen 59°W 381ks

13/18 County Cor. 7"x36" Scribed Post & 1"x6" Iron Pipe  
B.T's. 2" R. Pine 12" Aspen 8" Oak  
5.38°W 1271ks 58°E 1241ks N16°E 951ks

T57N R26W

17



33/34 F.S. Approx Post 7" x 30" set from G.L.O. B.T.  
413 Balsam wood 8" W. Birch Form 958 on 19" W. Spruce  
B.T's. 560°E 561ks N590°E 301ks N50°E 251ks.

1/16 #1  
S.A.

1/4 33 County Corner. 1/2" x 7" 3 Cornered Iron Pin.  
4 5" W. Birch 7" Birch Form 458 on 22" W. Pine spruce  
B.T's. N30°E 781ks S39°W 291ks N63°E 301ks.

1/16 #2 F.S. Approx. 3/4" x 3" Iron Pipe  
S.A. Form 458 on 5" Birch S59°E 211ks

32/33 County Corner. 3" x 3" Scribed Post & 1/2" x 10" 3 Cornered Iron Pin.  
514 5" Birch 5" Birch  
B.T's. N36°W 241ks S18°E 301ks

1/16 #3 F.S. Approx. 3/4" x 3" Iron Pipe  
S.A. Form 458 on 14" R. Pine N58°W 231ks.

1/16 #4  
S.A.

1/16 #5 F.S. Approx. 3/4" x 3" Iron Pipe  
S.A. Form 458 on 6" R. Pine S61°E 481ks

1/16 #6  
S.A.

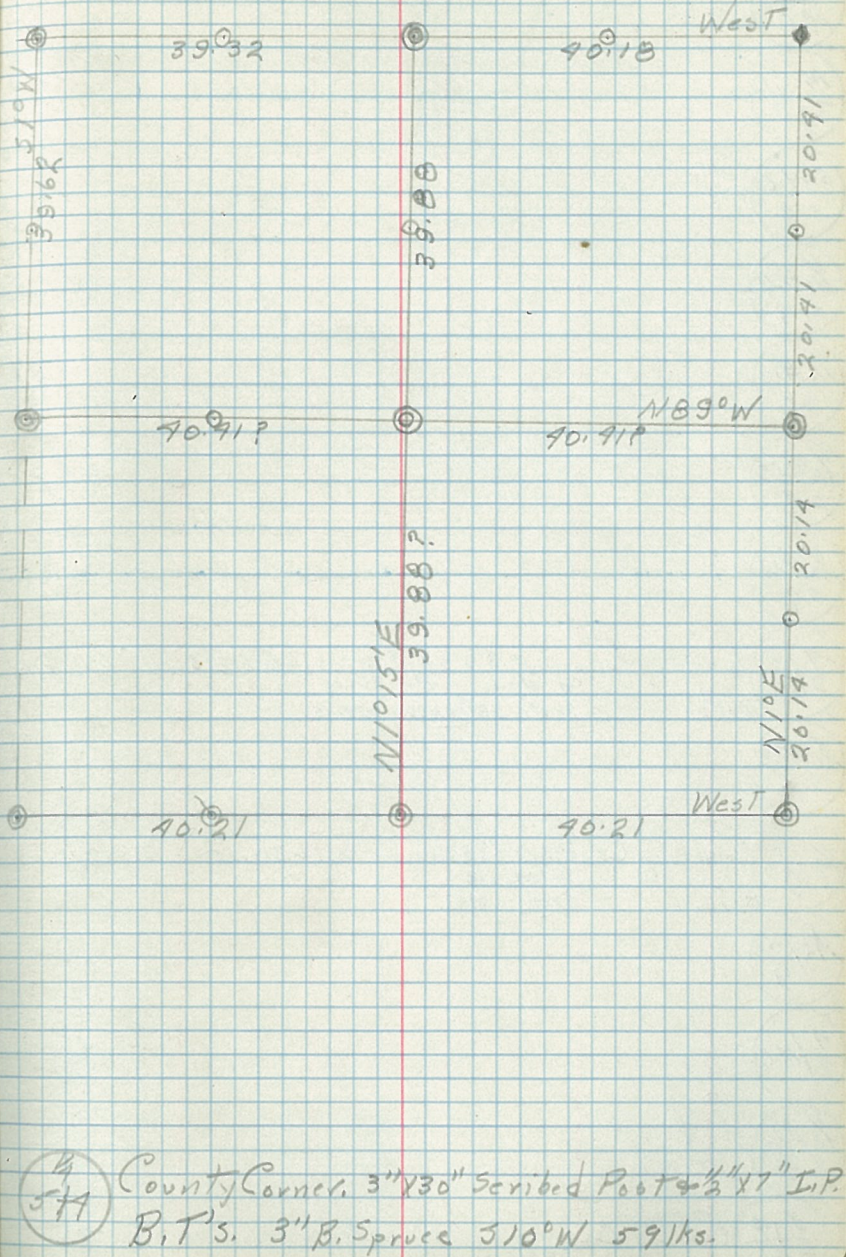
1/16 #7  
S.A.

1/4 473 County Corner. 5" x 3" Scribed Post & 1" x 1" Iron Pipe  
10" W. Pine 5" Cedar  
B.T's. N39°W 291ks S86°E 171ks

1/16 #8  
S.A.

1/4 59 County Corner. 3" x 30" Scribed Post & 1/2" x 6" Iron Pin  
14" W. Pine Form 958 on 10" Balsam  
B.T's. N49°E 1191ks N40°E 971ks

1/16 #9 F.S. Approx. 3/4" x 6" Iron Pipe  
S.A. Form 958 on Cedar Post 51ks South



1/4 544 County Corner. 3" x 30" Scribed Post & 1/2" x 7" I.P.  
B.T's. 3" B. Spruce S10°W 591ks.

5/9  
M.C.

M.C.  
5/4

S.M.C.  
5.4

1/16 #11  
5.4

1/16 #12  
5.4

1/16 #13  
5.4

1/16 #14  
5.4

9/13  
9/10

County Corner. 3'x36" Ash Post & 1/2" x 1/2" 3 sided Iron Pin  
4" Ash 4" W. Birch  
B.T's. S85°E 98 1/2' N39°W 135 1/2'

1/16 #15  
5.4

1/4 4  
9

County Corner. 4'x3' scribed Post & 3 cornered Iron Pin  
9" Maple  
B.T's. S56°E 69 1/2'

M.C./4  
9

4/M.C.  
9

1/16 #16  
5.4

5/4  
8/9

County Corner. 4'x30" scribed Post & 3 cornered Iron Pin  
18" W. Birch 8" Maple  
B.T's. N69°W 70 1/2' S97°W 99 1/2'

12/12  
13/18

1/6#1  
5.13

M.C. 1/2  
1/3

12/1  
13/M.C.

11/12  
17/13

County Corner. 4" scrided Aspen Post + 1/2" Iron Pipe  
5" W. Birch 6" W. Birch 7" Maple 8" Iron Wood  
B.T.S. N47°W. 201ks N59°E 311ks N60°E 441ks 5730E. 301ks.

1/6#3  
5.13

1/6#4  
5.13

S.M.C.  
5.13

1/6#5  
5.13

S.M.C.  
5.13

1/6#6  
5.13

1/6#7  
5.13

13/18  
M.C.

M.C.  
13/18



1/6#8  
5.13

C/4  
5.13

1/6#9  
5.13

S.M.C.  
5.13

1/4  
19/13

1/6 #10  
5.13

1/6 #11  
5.13

S.M.C.  
5.13

S.M.C.  
5.13

S.M.C.  
5.13

1/6 #13  
5.13

1/6 #14 County Corner 3' X 3' scribed Aspen Post & 1" X 6" Iron Pipe  
5.14 B.T's. 7" Aspen 8" Aspen  
S76°W 45'ks N72°E 9'ks

13/18 County Corner 4' X 3' scribed Post & 1" X 6" Iron pipe  
29/19 8" R/Pine 14" Aspen 8" Oak Form 458 on 8" Aspen  
B.T's S92°W 17'ks S59°E 17'ks N16°E 45'ks N29°W 35'ks

1/6 #18 F.S. Approx. 4' X 3' Squared Aspen Post.  
5.13 Form 458a on 12" Aspen N34°E 25'ks.

M.C. 113  
124

131  
21/M.C.

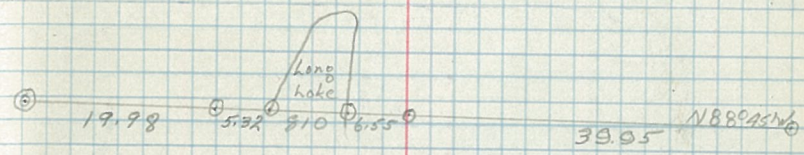
1/6 #16 F.S. Approx. 2' X 2' Squared Aspen Post.  
5.13 Form 458a on Pine stump N82°E 55'ks.



1/4 113 F.S. Approx. 3' X 30" Squared Aspen Post  
25/24 Form 458 on 6 Aspen SB2°E 71'ks

S.M.C.  
5.13

- 11/13  
19/13
- 1/6 #1  
5.14
- M.C. 11/19
- 11/19/M.C.
- 1/6 #2  
5.14
- 10/11  
15/19 County Corner. 2" Iron Pipe flush with ground in road.  
W. Pine stump 18" W. Pine 8" Maple (down) 4 1/2 x 30" Oak Post set  
B.T's. S220E 93 lks N320W 163 lks S260W 128 lks S790E 9 1/2 lks Iron pipe.
- 1/6 #3  
5.14 County Corner. 3" x 30" Scribed Oak Post  
B.T's. 10" Maple 10" W. Pine  
N590W 90 lks N390E 95 lks
- 1/6 #4  
5.14
- 1/6 #5  
5.14
- S.M.C.  
5.14
- 1/6 #6  
5.14
- 1/6 #7  
5.14
- 1/4  
19/13
- 1/6 #8  
5.14



1/6 #9  
5.14



10/11/15  
 County Cor. 4" x 3" scribed Post 379°E 9 1/2 kts from Pipe  
 B.T's. 1/2" Iron pipe flush with ground in road.  
 W Pine stump 18" W Pine 8" Maple (down)  
 522°E 42 kts N 22°W 163 kts 526°W 129 kts.

MC/10/15  
 County Corner 2" x 3" scribed Post  
 B.T's. 18" W Pine 29" W Pine 5.5' on 2 stumps  
 519°E 39 kts N 7°W 96 kts barely readable  
 Gih. O. Balsam

10/15/15  
 M.C.

MC/10/15

M.C.  
 16/15

1/4 #3  
 B.15

S.M.C.  
 5.15

S.M.C. County Corner 2" x 2" scribed Post & 1/2" x 3" Iron Pipe  
 B.T's. 14" W Pine 20" W Pine  
 578°E 38 kts N 20°E 50 kts

1/4 #7  
 County Corner 3" x 3" scribed Oak Post.  
 B.T's. 10" Maple 18" W Pine  
 N 59°W 40 kts N 39°E 75 kts

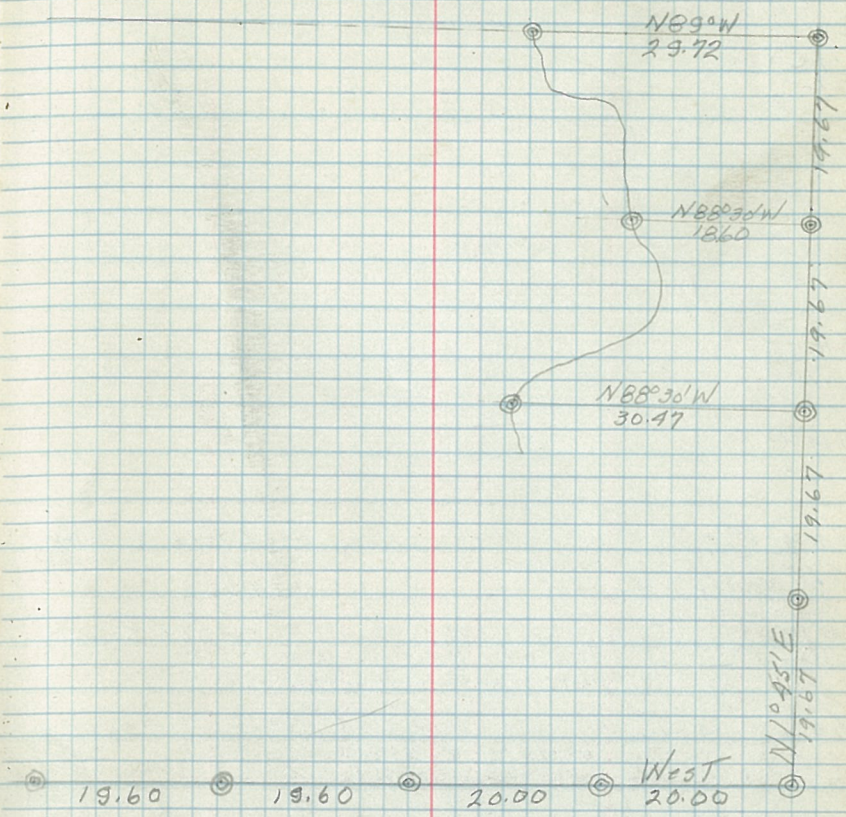
1/4  
 County Corner 4" x 3" scribed Post & 1/2" x 6" Iron Pipe  
 B.T's. 12" R. Oak 593°E 56 kts.

S.M.C. County Corner 2" x 2" scribed Post & 1" x 3" Iron Pipe  
 B.T's. 10" R. Pine 12" R. Pine  
 N 79°E 39 kts N 20°E 50 kts

S.M.C.  
 5.15

S.M.C.  
 5.15

S.M.C.  
 5.15



1/4  
 16/15

16/15

M.C

M.C.

16/15

1/6#10

5.15

S.M.C.

5.15

S.M.C.

5.15

S.M.C.

5.15

1/6#14

5.15

County Corner. 3" x 3" scribed Post + 1/2" x 6" Iron Pipe

B.T's. 10" Balsam

6" B. Spruce

N20°E 131ks

S24°E 931ks

15/14

22/23

County Corner. 3" x 3" scribed Post + 1/2" x 8" Iron Pipe

B.T's. 8" Maple

6" Maple 16" Maple

N85°E 391ks

S72°E 581ks S76°W 221ks

1/6#16

5.15

County Corner. 2" x 3" scribed Post + 1/2" x 14" Iron Pipe

B.T's. 8" Maple

8" Maple

S38°W 281ks

N46°E 311ks

S.M.C.

5.15

1/4 15

22

County Corner. 3" x 3" scribed Post + 1/2" x 14" Iron Pipe with the bowl

B.T's. 6" Maple

8" Maple

N68°E 221ks

S22°E 221ks

S.M.C.

5.15

1/6#16

5.15

County Corner. 3" x 3" scribed Post + 1/2" x 15" Iron Pipe

B.T's. 10" Oak

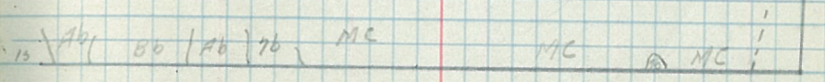
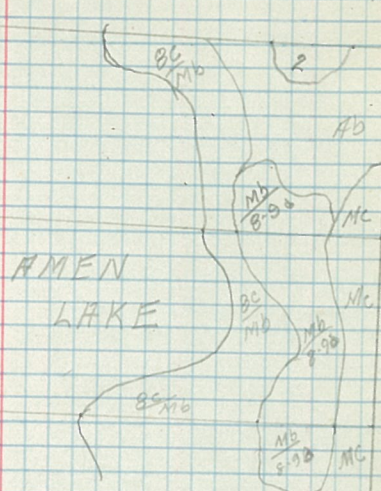
14" Basswood

S91°W 211ks

N80°E 451ks

S.M.C.

5.15



16/15 F.S. APPROX. POST 30' E from County B.T's.  
 21/22 B.T's. 6" Dry Balsam Cedar Stump 6" Basswood  
 N67°E 361ks N91°W 151ks S30°E 601ks