

STAR ISLAND
CONTOUR SURVEY

DIETZGEN
MINING

MINING
TRANSIT BOOK

No. 4727

ccc

79

Star Island Center

Sta.	50	100	150	200
0	101.7	104.9	104.7	105.2
50	102.7	106.1	105.6	105.6
90	101.8	105.1	104.4	105.2
200	101.5	104	104.35	105.65
300	102.0	104.5	105.3	106.0
500	103.7	106.9	107.7	108.1
600	103.0	105.2	105.5	106.4
a+100	103.1	104.9	104.5	105.0
+200	103.5	104.8	104.65	104.35
a+300	103.7	104.8	104.5	104.5
a+400	103.1	104.5	105	104.8
b+100	102.3	103.9	104.8	105.2
b+200	102.3	103.9	104.8	105.2
b+300	103.5	103.55	103.6	105.1
b+600	102.2	103.9	104.4	103.9
b+700	102.4	104.6	105.05	106.05
b+900	102.7	104.2	104.3	104.3
b+1000	101.8	103.6	104.6	104
c+300	102.6	102.6	102.85	103.25
c+600	102.5	102.0	102.0	104.2
c+700	102	101.3	101.75	113.95
c+900	101.4	102.9	121.6	128.3
c+1100	101.4	102.9	121.6	128.3
d+50	101.4	102.9	121.6	128.3
d+100	101.4	102.9	121.6	128.3

Survey

250	300	350	400	450	500	550	600	650	700	1050
106.7	108.2	108.9	108.65	108.65	108.5	108.5	110.2	107.6	103.6	118.6
105.45	107.95	108.65	107.65	108.05	107.65	107	106.3	105.5	105.5	118.6
105.2	107.5	109.2	107.2	108.9	106.5	106	106	107.2	106.3	118.6
105.15	107.65	109.15	107.85	108.75	109.85	107.35	108.05	108.05	108.05	118.6
106.0	107.3	109	108.15	108.25	110.05	108.85	108.55	107.05	107.05	118.6
109.5	Trail	111.3	111.3	110.4	112.6	112	110.8	110.8	110.8	118.6
104.9	105.6	108.0	109.4	107.6	107.6	109.1	108.1	108.1	108.1	118.6
105.4	105.4	107.2	109.3	108.7	107.7	108.7	110.7	110.7	110.7	118.6
106.05	106.05	109.85	110.45	108.05	108.55	112.05	112.05	112.05	112.05	118.6
105.7	106.2	106.9	108.1	110.4	107.9	107.9	109.2	109.2	109.2	118.6
level	10.5	10.5	10.5	10.5	10.5	10.5	10.5	10.5	10.5	10.5
104.3	104.9	105.7	105	105.7	106.2	107.2	106.5	106.5	106.5	118.6
104.95	104.65	104.65	104.65	104.65	104.65	104.65	104.65	104.65	104.65	118.6
level	10.5	10.5	10.5	10.5	10.5	10.5	10.5	10.5	10.5	10.5
105.4	105.4	105.4	105.4	105.4	105.4	105.4	105.4	105.4	105.4	105.4
107.0	107.0	107.6	107.8	108.3	109.8	110.8	111.7	109.7	109.7	109.7
104.6	104.1	105	105.2	105.35	105.95	106.75	107	107	107	107
104.8	104.8	105.3	104.6	104.7	106.8	115.3	13.12	13.12	13.12	13.12
104.25	104.25	104.65	109.45	12.85	12.75	12.85	130.25	130.25	130.25	130.25
103.7	118.35	121.35	121.35	116.35	112.35	115.85	125.35	125.35	125.35	125.35
128.85	128.85	128.2	128.1	127.8	127.7	127.7	126.75	126.75	126.75	126.75
128.8	128.8	127.8	126.8	120.8	128.8	123.5	113.2	113.2	113.2	113.2
700	850	130.5	130.5	130.5	130.5	130.5	130.5	130.5	130.5	130.5

grad slope down from 1000 out

5650W
N25°W

O ₁	50	100	150	200
	S-40	r. 17.2	d. 2.8	r. 1.3
+100	S-40	r. 3.5	r. 5.4	r. 2.2

O₂ runs N25°W

O ₂	124.6	127.9	128.7	128.85	129.2
O ₂ +100	127.4	r. 5	r. 8	r. 15	r. 35
200	128.0	d. 127.85	d. 127.25	d. 126.95	d. 127.5
300	127.1	r. 126.85	r. 128.05	r. 128.4	r. 129.9
400	126.5	d. 127.9	d. 128.1	d. 128.6	d. 128.35
500	126.2	r. 128.7	r. 128.1	r. 129.1	r. 130.3
600	129.3	d. 130.8	d. 130.7	d. 130.6	d. 128.6
700	132.8	r. 133.2	r. 131.7	r. 131.7	r. 129.4
800	133.4	d. 133.1	d. 133.1	d. 130.1	d. 130.7
900	132.6	r. 132.1	r. 129.3	r. 129.9	r. 127.65

these from O₂+900 run N66°E

O ₃ +100	132.9	132.3	132.4	130.85	130.15
O ₄ +10	129.25	d. 130.15	d. 130.85	d. 130.85	d. 130.7
O ₄ +200	128.95	r. 128.95	r. 129.40	r. 130.15	r. 130.1
O ₄ +378	130.75	d. 130.55	d. 129.85	d. 128.95	d. 128.75
O ₅ +139.7	131.75	r. 131.55	r. 131.45	r. 130.35	r. 128.95
O ₆ +200	129.7	d. 129.4	d. 129.2	d. 128.3	d. 128.2
O ₆ +433	131.85	r. 130.15	r. 129.7	r. 129.5	r. 129.4

385

250	300	350	400	450	500	550	600
r. 1.4	r. 1.5	r. 1.7	r. 1.7	r. 2.3	r. 1.5	r. 1.2	d. 6.3
r. 1.0	r. 3	d. 3	d. 5	0			

129.2	127.7	127.45	382	
129.0	129.1	129	372	
131.4	131.4	131.4	365	
130.35	129.55		130.9	
128.8	128.8	127.8	374	
127.6	127.6	127.6	370	
123.5	119.1	119.	378	
127.8	125.4	124.1	378	
126.15	125.35	0	387	

Cabin 4' Nat 350
Cabin at 300
North edge of bridge at 200
Trench at 250
30' to Shrub
South 20' from 350 to NE corner of cabin on L-13

382 to O₃ - O₃ runs N19°30'W - 299.5 to O₄ (OG-N1030°W-433°)

131.55	131.9	129.7	128	130.4	130.4
130.2	129.4	129.4	130.5	131.3	132.3
129.6	129.4	130.25	128.55	128.05	128.85
128.75	131.45	132.05	131.95	131.75	130.55
127.85	127.5	128.25	128.55	128.55	129.
126.6	127.5	129.0	127.9	128.6	127.4
129.2					

OG runs N18°5'W - 158.75
tail at 140
tail at 180
trail - 450
tail 60' S at 220
2 trail at 200 & 300
tail - 175 + 40' trail 190
150' trail
3rd trail 5' at 150'
O₇ run N74°20'E - 119.4 to lake
O₈ run N2°30'E - 900'

50 100 150 200 250
 Oct 200 S-10 103.9 103.65 120 138.9 140.1
 Oct 387 S-15 102.3 104.5 104. 121.85 127.85
 Oct 600 S-10 102.6 103.5 101.95 103.45 129.10

Oct 800 S-13 102.2 102.4 103.4 102.9 220 1205
 Oct 900 S-0 99.55 100.00 102.3 150/111.4 133.25
 Oct 1400 S-12 102.5 103.1 105.7 106.4 107.9

Lake Helen 75' L (N) to strip at 400
 Oct 500 strip is run at 86° W
 Oct 500 S(-10) 101.05 103.60 99.15 99.25 99.11
 Oct 700 N 70° E - 700

Oct 200 S 0 102.35 102.15 101.10 103.1 103.9 101.85
 Oct 400 S-5 101.10 103.0 101.10 103.9 101.85
 Oct 600 S-10 102.0 102.0 101.1 104.4 104.1

Oct 1100 S 0 102.75 103.85 102.75 103.1 103.5 100.50 102.0
 Oct 1200 S 85 104.6 101.8 107.4 105.5 105.05 106.2
 Oct 1400 S-60 102.95 102.35 103.75 102.65 102.55 102.55

Oct 1600 S-110 106.4 104.9 104.45 103.45 105.16 102.85
 Oct 1800 S 30 101.1 101.65 100.55 99.4 98 102.85
 Oct 1900 going back S 120 103.0 104.05 108.2 105.2 113.2

300 350 400 450 500 550 600
 141.1 142.35 141.35 141.25 137.35 130.40 127.1
 127.70 127.7 129.7 131.2 130.7 131.15 133.65
 136.35 1100 1150 100.75 98.9
 137.8 138.05 137.61 136.75 136.75 135.15 124.15

135.25 135.65 136.75 136.55 135.25 131.25 133.15
 110.3 115.95 125.95 128.35 123.55
 12.4 15.65 11.0 12.4 14.8
 136.65
 Strip is along edge of slope between ridge + swamp.

100.9 103.4 99.7 98.9
 100.45 99.5 99.55 101.65 100.55 100.55 650 700 750 800 850 900
 104.25 99.05 102.25 105.65 108.65 110.55 111.55 800 850 900
 115.55
 Swamp ridge 75' N
 End of swamp
 Edge of Lake Helen 400
 ridge 6' higher runs North

104.35 108.45 113.40 118. 121.1 122.65 119.55 700 800 900
 1200 ice 115.4 106.5 108.4 109.3 106.4 106.
 1003.4 106.75 105.55 106.05 107.9 108.35 107. 111. 115.45 700 117.95 115.4 110.1 103.85
 101.9 100.0 102.5 103.55 108.55 114.35 117.65 106 108.35 700 800
 102.2 102.5 103.55 105.8 105.8 107.4 107.9 700
 106.1 104.5 106 108.1 106 107.8 102.9 102.1 100.1 99.8 99.5 99.9

100.5 100.70 101.4 101.5 102.8 105.8 107.4 107.9 700
 114.2 114.2 114.65 113.35 112.25 105.35 102.75 101.05 100.05 107.5
 102.105 102.05 102.85 102.85 102.14 104.1
 102.105 102.85 102.14 104.1
 102.105 102.85 102.14 104.1
 102.105 102.85 102.14 104.1

Sta. 0 -

	50	100	150	200
+79.3 S 50'	101.5 r 1.5	104.9 r 3.4	105.5 r 1.6	105.7 r 2.2
179.2 S 50'	101.1	104.5	106.6	106.45
279.3 S 60'	100.8 r 1.8	104.1 r 3.3	106.4 r 3.3	105.6 sked rt. 15'
379.3 S 65'				
479.3 S 65'	100.25	103.25 r 3.0	106.15 r 2.90	107.85 r 1.7
579.3 S 60'				
679.3 S 55'	100.2	102.5 r 2.3	105.5 r 3.0	107.5 r 2.0
779.3				
879.3 S 50'	100.4 r 1.4	104.3 r 3.9	108.1 r 3.8	108.1
979.3 S 50'	100.8	105.1 r 4.2	106.5 r 1.5	108.4 r 1.9
1079.3 at 3° E S 40'	102.2	107.0	108.5	r 120.2
1179.3 S 30'	102.1	105.3	r 120.1	124
1279.3				
1379.3 S 15'	108.9	127.4		387' to

Sta. Star Point ⁴⁴⁰⁰ S 15' 125.8 125.45 123.75 122
⁴⁵⁰⁰ S 10' 124.7 d 2.2 d 2.1 d 5.6

Sta. St. P. 11 S 63° E - 300'

+0 S(-5)	117.9	d 7.8	d 7.7	d 11.3
+100 S-0	103.05	110.25	107.4	bank
+200 S 0	r 3.103	r 18.0	Bank	
+300	end of point			

Sta. 0 thence due east

250	300	350	400	450	500	550	600
107.6	108.6	108.45	108.05	108.2	106.7	106.4	105.4
108.45	109.15	109.35	110.85	110.6	108.6	107.7	103.7
107.4	108.35	109.5	109	107.9	107.4	120.6	126.6
107.85	109.25	108.75	107.45	118.35	127	127	127
108.6	107.6	114.5	122.8	124.8	124.1	123.8	123
109.6	119	121.5	120.5	118.5	120	120.4	120.15
116.3	117.1	107.8	120.4	121.5	116	122.3	123.5

see line (cont) this point to Oct 100 is S 52° 30' E 204'

119.5
113.6
115.35
116.85

boat house at 150 on strip

		50	100	150	200
d+260	S40	r 101.6	r 117.3	r 128.7	r 142.3
d+360	S45	r 110	r 130.4	r 132.1	r 133.4
d+460			r 131	r 131.7	r 131.7
d+560		top 85	r 130.7	r 128.7	r 126.2
d+660		top 70	r 130.7	r 124.5	r 126

G	S+3'				
G+100	S-8'	r 123	r 126.5	r 128.2	r 125.9
+300	S-5'	r 105.9	r 127.9	r 130	r 130.1
+500	S-40	r 92	r 125.7	r 125.6	r 124.8
+700	S-27'	r 106.1	r 123.0	r 122.6	r 123.5
+900	S-0	r 120.3	r 134.4	r 134	r 134.15
G+1000	S at 100	r 125.75	r 132.35	r 132.35	r 132.5
+1100	S at 160	r 117	r 132.05	r 125.5	r 121.75
G+1200	S at 160	r 100	r 104.1	r 113.9	r 120.3
G+1300	S +12	r 101.5	r 103.7	r 105.6	r 105.6

I+0'	S 10'			
I+200'	S-20	r 135.6	r 136.45	r 136.45
I+300	S30	r 134.85	r 134.85	r 132.1
I+500	S-30	r 132.9	r 133.2	r 133.55
I+650	S-0			
J+100	S 20	r 131.1	r 130.8	r 129.8
J+300	S-20	r 133.4	r 134.05	r 132.75
J+500	S-85	r 137.65	r 124.7	r 123.4
J+600	S-30	r 143.65	r 135.6	

	250	300	350	400	450	500	550	600	650	700	750	850
d+260	r 129.75	r 129.8	r 131.3	r 130.4	r 130.4	r 128.7	r 128	r 122.5	r 123.8	r 127.5	r 135.5	
d+360	r 132.5	r 133.6	r 130.4	r 127.4	r 125.6	r 126	r 126.9	r 126.6	r 120	r 131.6		
d+460	r 121	r 126.5	r 121.8	r 113.3	r 113.3	r 113.3	r 118	r 118	r 122	r 122		
d+560	r 129.7	r 123	r 116.3	r 110.6	r 110.3	r 102.5	r 117	r 120.9	r 120.9	r 120.9		
d+660	r 123	r 119.7	r 117.7	r 117	r 122.5	r 124	r 129.3	r 132	r 132	r 127		
	r 75.0	r 75.0	r 75.0	r 75.0	r 75.0	r 75.0	r 75.0	r 75.0	r 75.0	r 75.0		

	250	300	350	400	450	500	550	600	650	700	750	850
G+100	r 125.9	r 121.8	r 117.7									
+300	r 128	r 128	r 126.3	r 124.5	r 123.8	r 122.8						
+500	r 124.5	r 123	r 124.9	r 122.9	r 120.8	r 120.5	r 119.8	r 120.4				
+700	r 128.2	r 127.5	r 123.5	r 126.7	r 126.4	r 126.1	r 125	r 123				
+900	r 133.35	r 127.5	r 123.5	r 126.5	r 119.8	r 120.45	r 125.5	r 128.5	r 130.8			
+1100	r 125.7	r 122.2	r 117.6	r 107.6	r 101.25	r 100.55	r 107.4	r 115.6	r 125.2			
+1300	r 112	r 109.2	r 100									

	250	300	350	400	450	500	550	600	650	700	750	850
I+200'	r 136.1	r 137.7	r 136.8	r 132.7	r 131.8	r 134.9	r 136.8					
I+300	r 133.0	r 133.35	r 133.05	r 132.5	r 131.55	r 130.9	r 133.5	r 133.5				
I+500	r 133.7	r 134.5	r 136.5	r 136.3								
J+100	r 129.6	r 129.3	r 131	r 131.3	r 132.5	r 134	r 133.5	r 135				
J+300	r 131.75	r 132	r 131.4	r 130.55	r 131.45	r 130.8	r 132.6	r 130.5				
J+500	r 133.9	r 133.6	r 133	r 132.4	r 134	r 129.9	r 128.9	r 128.9				

		50	100	150	200
J+800	S-65'	100.25 R.25	105.25 F5.0	120.35 F13.1	135.35 F15.0
J+1000	S-75'	100 F0	101.3 F1.3	101.8 F1.5	106.5 F4.7
J+1100	S-100'				
K+200	S-5'	101.5 F1.5	103.7 F2.2	105.9 F2.2	106.6 F1.3
K+500	S-15'	102 F2.0	101.5 F1.5	106.5 F5.0	134.4 F21.9
K+693	S-5'	105.5 F2.3	128.9 F23.4	138.25 F9.35	135.35 d.1.9
L+200	S-20'		132.7 d.1.6	131.1 d.1.6	129.5 d.1.6
L+400	S-10'	Born 65'	130.5	129.4	128.6
L+600	S-5'	129.1	128.7	128.9	128.8
L+800	S-35'	109.7	127.9	128.2	114.6
L+1000	S-83'	102.8	114.9	122.1	108.4
L+1184	S-10'	101.2	100.95	103.95	1120
M+100	S-25'	100.3	100.3	100.6	103.4
M+200	S-48'	100.95	101.45	101.4	103.15
M+300	S-55'				
M+400	S-35'				
M+516.4	S-0				
N+10	S-25'				
N+20	S-30				
N+300	S-35'				
N+400	S-30	101.5	102.7	100.4	108.6
N+600	S-5'	102.05	100.25	101.95	104.95
O+0	S-0	101.9	102.2	103.7	104.6
O+200	S-10'	102.75	102.56	102.85	109.05
O+350	S-9'	103.6	104.6	105	106.0
P+100	S-15'	102.8	104.45	104.65	105.85
P+300	S-27'	104.2	105.5	109.5	1121.1
P+400	S-24'	105.9 105.9	113.8 113.8	109.5 109.5	1109.8 109.8
P+500	S-20'	107.4	109.05	107.35	110.85

	250	300	350	400	450	500	550	600
	137.85	138.85	133.85	133.85	132.25	131.6	131.1	
	106.65	106.95	109.3	125.6	136.0	132.8	131.1	
	135.9	133.9						
	134.25	133.9	134.25	134	135.55	135		
	129.75	127.2	127.2	129.05	129.3	128.65	128.5	
	127.65	127.45	126	125	123.75	124.95	124.45	125.15
	127.9	124.9	124.8	125.15	122.15	120.65	116.65	109.15
	121.7	124.2	122.9	121.4	122.2	120.7	113.8	113.7
	113.9	105.9	118.4	118.9	119.6	119.6	124.8	130.3
	115.5	111.8	103.9	107.3	107.3	102.9	105.5	122.1
	106.7	123.4	124.5	121.3	118.1	114.3	110.4	106.6
	123.5	119.65	114.45	108.5	105.2	105.2	101.4	1100
	124.8	124.3	121.7	124.8	118.1	116.8	114.6	108.1
	109.45	123.5	119.45	125.85	121.75	113.85	118.3	124.8
	116.9	122.1	132.4	131.4	127.1	124.1	119.8	126.3
	114.05	117.5	122.5	123.5	120.7	131.1	124	126
	122.1	123.55	133.75	127.75	129.25	126	120.7	126.7
	116.4	128.2	134.7	136.8	137.9	141.4	140	136.7
	115.05	123.55	112.8	122.3	127.3	126.8	121.3	120.2

Road 575'
 level
 Road 475'
 level
 Same point
 132' on strip
 110 oak 7.50
 121 at 7:00
 3700 in 12.0
 177-10-10
 120 at 7:00
 Swamp
 650 700 775-850
 117 125.2 131 116
 127 127
 275 on strip
 900-125
 130 at 6:50
 140
 140.2
 level

		50	100	150	200-250
P+600	S-5	111.6	122.5	122.5	114.8 115.6
Q+0	S(-4)	117.7	132.7	135.1	123.5 110.3
Q+100	S-35	107.95	125.25	137.15	131.55 104.4
Q+300	S(-5)	103.3	101.1	106.3	114.2 118.7
U+0	Timber 60'	100.3	102.8	102.2	100.5 100
U+200	Timber 50'	100.3	102.85	103.95	105.45 103.75
U+400	91st 116' (-25) 40'	101.5	102.4	103.9	102.2 103.65
U+600	91st 30' (-300) 30'	101.45	103.65	103.6	105.8 103.7
U+800	91st 10' (-125) 10'	102.0	104	103.25	103.25 103.4
Walrus beam		101.05	103.55	104.6	101.9
X along bearing	X 5' low Wat 200	102.15	102.5	102.05	101.85 100

	300	350	400	450	500	550	600	650
	123.4	124.2	126.2	126	123.25	121.6	118.9	115.9 122.9
	103.8	105.2	102.7	104.4	108.9	106.25	102.5	101.0 to swamp level
	116.55	102.25	107	104.9	100.9	100.2	0	
	118.6	106.3	100	100	103.65	103.6	103.1	62.0 Swamp scale - 460
Swamp approx 350' to high land								
	104.4	107.6	105.4	102.1	100.5	99.35	100.35	109.85 107.5 - 150' timber 70' next strip Swamp 12.5
	102.35	104.58	121.6	126.75	132.95	127.95	130.85	71.0 Swamp
	115.9	127.8	123.6	126	117	112	107	66.0 Swamp
	105.8	115.2	115.6	127.4	127.1	121.9	10	old stack - 87m strip
			108.3	106.2	100	100		Swamp ends - 800

A, ~~100~~ is at end of first strip
 A, run S 53° W -

		50	100	150	200	250
A, +200	S 10	105.7	105.9	104.2	105.0	103.1
+400	S 15	105.25	105.8	104	104.5	103.5
+600	S 0	105.8	104.4	105.4	104.4	103.7

b, -
 570° W - 600'

b, +100	S-10	105.0	106.0	104.35	104.35	102.65
+300	S-15	104.45	105.05	104.2	105.1	104.7

From b, +500 S 62° E - 111' to SW end of strip.
 " 52° W 50' to SW

b, +500 S-10 104.15 105.35 104.95 105.0 102.0
 c, S-0 runs N 84° 45' W - 700'

c, +100	S-5	102.95	103.35	d 700		
c, +300	S-15	102.2	102.85	103.85	d 400	
c, +500	S-40	103.55	104.55	104.6	d 500	
c, +700	S-25	103.2	104.35	104.25	d 700	

d, - N 59° 30' W - 370.0'

d, +100 S-75'
 +200 S-60'

e, - run N 81° W - 400'

e, +0	S (10)	103.8	102.6	100.6	102.7
e, +200	S 30	103.35	d 2.0	d 2.0	d 2.0
+400	S-20	d 1.5	0	11.3	103.3

f, - N 66° 15' W - 246.0'

f, +200	S 50	110	104.4	100.8	101.4	101
---------	------	-----	-------	-------	-------	-----

600'

crossing point

300	350	400	450	500	550	600	650
105.1	103.6	105.1	104.2	102.8	100.8	100.3	grad drop
102.2	102.9	101.2	105.9	101.3	102	102	100
104.2	103.5	102.3					swamp at 650
109.75	108.6	108.55	100				shore - 440'
101.8	100						shore - 340'
202.30							
222.30							
shore 200							
shore 175							
shore 190							
shore 200							
103.7	100						
110	100						shore 315'
104.5	103.15						shore 315'
d 30							shore 290
102.5	105.85						
110	103.35						

700' swamp beginning at 700' SW end West

	Shore	50	100	150	200	250	300	350	400	450	500	550	600
f ₁ + 400	60	-	101.75	102.65	103.65	104.35	100.85	100.85	100.85	101.85	102.85	103.85	104.85
f ₁ + 600	25	102.7	102.7	103.0	103.4	103.9	104.4	104.9	105.4	105.9	106.4	106.9	107.4
f ₁ + 800	40	103.05	103.85	104.65	105.4	106.1	106.8	107.5	108.2	108.9	109.6	110.3	111.0
f ₁ + 1000	65	103.2	104.0	104.8	105.6	106.4	107.2	108.0	108.8	109.6	110.4	111.2	112.0
+ 1200	85	103.4	104.2	105.0	105.8	106.6	107.4	108.2	109.0	109.8	110.6	111.4	112.2
+ 1400	80	103.6	104.4	105.2	106.0	106.8	107.6	108.4	109.2	110.0	110.8	111.6	112.4
+ 1600	45	103.8	104.6	105.4	106.2	107.0	107.8	108.6	109.4	110.2	111.0	111.8	112.6
1800	8'	104.0	104.8	105.6	106.4	107.2	108.0	108.8	109.6	110.4	111.2	112.0	112.8
2000	10	104.2	105.0	105.8	106.6	107.4	108.2	109.0	109.8	110.6	111.4	112.2	113.0
f ₁ + 2150	50	104.4	105.2	106.0	106.8	107.6	108.4	109.2	110.0	110.8	111.6	112.4	113.2
2350	25	104.6	105.4	106.2	107.0	107.8	108.6	109.4	110.2	111.0	111.8	112.6	113.4
2460	5-5'	104.8	105.6	106.4	107.2	108.0	108.8	109.6	110.4	111.2	112.0	112.8	113.6

See line at approx. 1900 - 30' in to shore
 gully runs 23446 etc

G runs N43°15'W - 700

G ₁ + 100	S 5'	105.5	106.4	107.2	108.0	108.8	109.6	110.4	111.2	112.0	112.8	113.6	114.4
+ 300	S 15'	105.2	106.0	106.8	107.6	108.4	109.2	110.0	110.8	111.6	112.4	113.2	114.0
			123.75	122.45	121.15	119.85	118.55	117.25	115.95	114.65	113.35	112.05	110.75
500	S 15'	104.7	105.5	106.3	107.1	107.9	108.7	109.5	110.3	111.1	111.9	112.7	113.5
G ₁ + 700	S 10'	102.8	103.6	104.4	105.2	106.0	106.8	107.6	108.4	109.2	110.0	110.8	111.6
H ₁ + 100	S 10'	105.3	106.1	106.9	107.7	108.5	109.3	110.1	110.9	111.7	112.5	113.3	114.1
+ 300	S 20'	103.85	104.85	105.85	106.85	107.85	108.85	109.85	110.85	111.85	112.85	113.85	114.85

	300	350	400	450	500	550	600					
	100.85	100.85	100.85	101.85	102.85	103.85	104.85	High level about 100' West of shore at 500				
	101.4	101.4	101.4	102.4	103.4	104.4	105.4	Swamp road approx 500				
	102.0	102.0	102.0	103.0	104.0	105.0	106.0	30' East of 300' high level E 350				
	102.6	102.6	102.6	103.6	104.6	105.6	106.6	Swamp road approx 500				
	103.2	103.2	103.2	104.2	105.2	106.2	107.2	Swamp road approx 500				
	103.8	103.8	103.8	104.8	105.8	106.8	107.8	Swamp road approx 500				
	104.4	104.4	104.4	105.4	106.4	107.4	108.4	Swamp road approx 500				
	105.0	105.0	105.0	106.0	107.0	108.0	109.0	Swamp road approx 500				
	105.6	105.6	105.6	106.6	107.6	108.6	109.6	Swamp road approx 500				
	106.2	106.2	106.2	107.2	108.2	109.2	110.2	Swamp road approx 500				
	106.8	106.8	106.8	107.8	108.8	109.8	110.8	Swamp road approx 500				
	107.4	107.4	107.4	108.4	109.4	110.4	111.4	Swamp road approx 500				
	108.0	108.0	108.0	109.0	110.0	111.0	112.0	Swamp road approx 500				
	108.6	108.6	108.6	109.6	110.6	111.6	112.6	Swamp road approx 500				
	109.2	109.2	109.2	110.2	111.2	112.2	113.2	Swamp road approx 500				
	109.8	109.8	109.8	110.8	111.8	112.8	113.8	Swamp road approx 500				
	110.4	110.4	110.4	111.4	112.4	113.4	114.4	Swamp road approx 500				
	111.0	111.0	111.0	112.0	113.0	114.0	115.0	Swamp road approx 500				
	111.6	111.6	111.6	112.6	113.6	114.6	115.6	Swamp road approx 500				
	112.2	112.2	112.2	113.2	114.2	115.2	116.2	Swamp road approx 500				
	112.8	112.8	112.8	113.8	114.8	115.8	116.8	Swamp road approx 500				
	113.4	113.4	113.4	114.4	115.4	116.4	117.4	Swamp road approx 500				
	114.0	114.0	114.0	115.0	116.0	117.0	118.0	Swamp road approx 500				

Swamp begins at 100' into
 See line at approx. 1900 - 30' in to shore
 gully runs 23446 etc
 100' West of 100' East of strip
 700' gully to right of 900' strip
 300' wide & 1000' ft long for 1000' strip
 700' 85°
 115.0
 Road 175'
 Swamp 100x100 at 415 to 530
 Long gully of running down strip (200 to 300' wide)
 Road 175'
 level to 800' then gully
 See line at 580
 Swamp 750'
 See line at 425
 Swamp 500'
 Swamp 500'
 Swamp 500'
 Swamp 500'
 Swamp 500'
 Swamp 500'

N 88° 10' E 121.7 from MC to O₁₁ +1200

	Shore	50	100	150	200	250
O ₁₁ +1200	S-80	ice	100.85 7.85	102.9 7.05	105.1 12.2	107.5 110.6
	S-110	ice	ice	107.7	104.8	108.9
O ₁₁ +1600	S-50	101.15	101.4	102.4	116.5	117.4
O ₁₁ +1800	S-75	ice	107.9 7.9	107.25	108.5	109.25

O₁₂ runs N 40° E

O ₁₂ +100	S(-5)	101.15	103.15	1120.65	119.8	121
O ₁₂ +300	S-40	101.7	112.85	113.85	114.15	115.45
O ₁₂ +500	S(-5)	103.0	104.2	103.7	102.5	104.25
O ₁₂ +700	S-40	105.45	100.75	99.95	101.0	102.45

From }
 S 86° 30' W 71' to 10x16
 N 53° W 117' to 60x50
 O₁₂ +700 } N 79° 30' W 152' 16x40
 N 15° W 150' 40x40

O ₁₂ +900	S(-10)	103	114.5	125.65	131.35	138.95
O ₁₂ +1100	S-0	120.6	120.7	118.95	117.95	117.05

from O₁₂ +900 }
 136' - N 52° 30' W N
 149' - N 23° 30' W Center
 159' - N 1° W S
 204' - N 23° E S

O₁₂ +1300

O₁₃ runs N 11° 50' E

O ₁₃ +0	S-20	141.75	137.95	133.85	135.85
O ₁₃ +200		144.45	d.l	147.75	147.15
		139.70	144.15	144.25	149.90
				135.5	

S 79° 45' W - 160' from MC to West end of O₁₁ +600 strip

300	350	400	450	500	550	600	650	700	750	800	850
110.5	111.65	115.25	118.05	117.75	118.55	118.55	109.35	110.0	111.6	107.15	100
106.71	109	113.35	115.05	116.5	117.4	116.9	118.9	121.9	119.2	119.2	110
117.8	118.9	118.9	118.05	109.7	105.8	106.15	104.25	103.5	108.1	110.0	110
110.35	111.2	113.15	116.45	118.3	120.5	119.6	117.7	103.5	103.35	100.5	100
1350'											

120.75	115.95	110.95	109.15	112.35	110.7	112.6	111.3	105.7	100.0	100.0	100.0
114.35	114.9	112.45	115.2	119.6	122.4	119.7	117.1	114.4	103.9	101.2	100
108.35	116.4	111.95	112.45	114.9	114.6	114	114	116.2	107.2	100	100
104.65	102.6	101.3	102.55	103.05	102.55	110.1	116.4	117.5	116.4	115.8	112

Coast house North corner
 house center
 " North cor.
 " center

126.25	126.1	125.85	125.95	124.15	123.05	121.5	122.85	120.1	121.45	117.4
113.6	117.4	118.5	115.95	116.6	119.7	120.6	119.7	116.2	116.85	116.5

Cor 1 30x30
 " 30x30
 cor 1 30x30
 " 30x30

135.45	133.6	129.85	126.35	125.7	124.95	123.05
128.35	127.2	126.95	125.55	128.95	126.9	125.25

Sta.	Shore	50	100	150	200	250	300
013+400	10	145.85	144.45	142.85	142.05	141.25	141.25
+600 back	0	120.8	127.2	127.5	130.65	130.05	130.05
+700	15	120.7	122.0	122.8	124.45	128.35	128.35
back 500	60	122.2	121.2	120.2	125.7	128.25	128.25
+1000	50	121.2	123.4	124.2	129.25	134.25	134.25
+1100 back	5-100						
+1200 back	5-175			104.3	140.2	140.2	140.2
013+1400	550	165.85	129.95	128.6	129.8	129.8	129.8
back 545	103.7	102.5	120.5	119.9	121.5	124.5	124.5
013+1600	535	rise	directly at shore line				
013+1700	5-60	124.6	122.6	120.6	120.4	103.4	103.4
back 70	101.7	130.9	128.4	128.9	128.9	128.9	128.9

Sta.	Shore	50	100	150	200	250	300
013+1900	5-5	160.1	110.15	109.7	110.9	103.6	103.6
		102.5	102.95	102.5	103.6	103.6	103.6
		rise	rise	rise	rise begins		
		25' South	15' South	5'	5' South		

point extends 10' North from 013+2000

350	400	450	500	550	600	650	700	750	800	850	900
139.75	138.55	137.35	138.95	135.65	124.85	125.7	126.95	128.45	136.55	shore 90'	shore 90'
128.65	127.45	131.85	138.35	141.65	140.30	134.75	130.05	127	82.0	81.0	81.0
132.65	135.05	136.65	135.05	126.25	132.45	134.75	130.75	130.7	81.0	81.0	81.0
137.45	124	121.5	120.5	120.85	119.60	116.6	121.2	121.2	120.3	120.3	120.3
135.1	132.3	129.7	126.7	124.9	120.65	116.6	121.2	121.2	120.3	120.3	120.3

shore 340
ice
strip 350' long
shore 310'
Note - shore is 90' North of 125 on strip

50 100 150 200 250 300 350 400

H, 400	S-5	12.55	11.5	7.75	0	d3.8	
+600	S(80)	0	13.65	11.2	7.2	d3.0	Sunny
800	S(110)	0	12.5	11.3	d.4	d.6 d.1	d.3 0
1000	S(125)	100.1	102.6	103.2	102.6	102.3	100.3

11870 43-1 E - 76' to Mc

+1200	S(70)	103.0	101.55	103	103.35	100.7	101.5
1400	S(75)	102	100.3	101.2	100.1	100	100.5

Swamp end

From highland runs up west to last step

450 500 550 600 650 700 750 800 850 900

450	500	550	600	650	700	750	800	850	900
0	0	0	130	0	d.6	r.6	d.1.5	r.1	r.05
0	0	0	1050	1100	1200	1250	1300	1350	1400
0	0	0	107.55	114.75	103.5	113.1	102.7	102.05	102.95

Sec 26 & 27 from 1800' on N

Swamp

101.6 100.8 100.3 100.7 101.8

750

edges of brush beginning of meadow

to 14, + 1700 ft circles South runs

W₁ on Lake Windigo runs

	50	100	150	200	250	300	350	400
W ₁ to S 0	105	105.1	106.5	107.4	108.4	110.45	112.108	112.6
+200 S 25	107.1	106.5	105.6	103.9	103	101.3	107.7	110.6
400 S 25	104.4	104.2	106.8	104.3	101.45	104.2	114.45	118.65
600 S 5	105.3	107.2	109.05	122.4	121.9	120.2	119.1	115.65

W₂ runs south 20° 15' W - 600'

	100	150	200	250	300	350	400
W ₂ +200 S-35	106.2	106.5	108.8	121.2	123.9	121.3	119.9
400 S 50	106.05	106.25	106.35	123	120.6	117.4	115.5

	50	100	150	200	250	300	350	400
+600 S 15	107.0	107.95	108.5	111.7	115.1	110.3	106.55	108.15
+600 S 15	107.0	107.95	108.5	111.7	115.1	110.3	106.55	108.15

W₃ 5220 15' E

	100	150	200	250	300	350	400
W ₃ +100 S 45	105.6	105.4	123.3	120.9	116.4	114.3	110.55
+300 S 65	104.5	128.2	132.6	143.7	115.5	107.1	103

1.7
3
10
130
180
45

5290 15' W 600'

	450	500	550	600	650	700	750	800
450	133.2	129.45	128.35	126	123.3	119.75	116.35	112.25
500	120.25	121.95	119.75	116.35	112.25	108.2	103.4	99.2
550	116.85	112.1	112.1	114.1	119.1	123.0	127.0	130.0
600	113.55	113.65	112.25	112.55	114.85	109.85	114.85	119.85

End of swamp from
1.1 km at 300 m strip
road at 525'
trail to lake at 400'
road at 485'
road 425'
road at 400' also
secondary road cut thru
24 ft to 11 m strip
swamp - 150' across
2 x 1 m 150' south
runs North approx 450' + in 400' wide at
North end
road 525' then
runs S 35' W 2000'
high 10 m
road 670
975 1050 1150
130 131 130
50 x 50 hole 100' South
at 1050 m strip
8.50 1.90 road 1030
level 10200

	450	500	550	600	650	700	750	800
450	110.95	112.4	110.7	109.8	107.7	108.85	117.75	122.15
500	106.55	106.55	106.55	106.55	106.55	106.55	106.55	106.55
550	103.3	101.8	0	11.2	13.7	16.2	18.0	17.5
600	105.5	101.75	101.75	102.95	106.6	112.95	121.0	128.5

central gully runs across (650' strip in dark middle)
portion to the south in swampy plateau
swamp
900 950 level
1300
1300

50 100 150 200 250 300 350 400
 +500 5 50 60 115 117 119.2 124.3 133 144 152 161.2 174.3
 101.7 120.9 116.6 113.4 117.8 110.8 112.5

#710
 +700 5-35 106 120.15 114.25 114 120.4 123.7 122.7 118.9
 800 55 106.55 121.35 115.1 111.8 114.5 118 115.6 117.8

W4 mm 560° 30'E - 660'

W4+100 S 40 106.15 122.35 124.9 126 119.7 115.4 112.8 113.45
 115.4 108.5 102.35 102.05

+300 S-55 103.1 109 109.6 114.8 115.5 115.35 117.15 115.85

+50 50 105.6 110.8 118.3 128.8 106.7 125.6
 124.7 125.7

W4+660 S-5 108.3 111.7 115.65 120.1 121.5 122.2 121.35 121.35

8!
 60
 to flat $\pm 15'$ drop 150
 125' S 115

450 500 550 600 650 700 750 800 850 900 950 1000
 105.8 106.9 107.25 105.85 108 111.5 111 105.6 110.5 123.75 126.15
 107.0 106.3 104 105.0 103.5 101.4 102.3 103.5 104.45 105.4 105.9 105.3 103.4
 105.0 1100 1200 1200 1200 1200 1200 1200 1200 1200 1200 1200
 122.76 124.6 125.1 124.55 124.75 124 122.8 124.2 stake set at 14.28

11.3 75' and turns 850' south
 107.3 107.2 108.5 107.5
 110.5 107.75 101.30 101.2 101.2 106.2 114.2 120.

111.55 104.45 100.85 100.85 101.05 101.25 104.7 107.4 110.4 113.9 115.3 116.3
 102.05 106.6 103.4 107.35 115.0
 Swamp
 Swamps runs 100' N

114.3 112.3 109.7 106.3 105.3 101.4 100 102.8
 102.5 106.6 103.4 107.35 115.0
 road 950'
 Swamp 775 to 975
 Swamp runs 60° left from 900
 for 350'

124.5 124 122.5 drop to swamp
 123.35 122.35 126.9 127.4 126.5 125.55 123.85 120.6
 122.18 117.5 115 116.6 122.3 121.7 123.25 117.2 115.5 112.7 108.7

90-95 S 100's
 rise 3-75' S then drop
 slope off to north
 102-1100
 road at 1100
 down end of
 swamp

ridge peter south
 at 200' south of strip
 at 1200' on strip

ridge drops off at 125' on W5+300 sharply

W5 runs N84°45'E-1100'

50 100 150 200

W5+100 S-40 105.05 117.05 118.2 119.8

+300 S-75 104.9 104.9 106.15 103.85

+500 S-80 5 runs

Pumpat camp grade in S38°W

Brushswamp

+700 S-

W5+700 S-50 105.0 104.2 104.1 101.85

+900 S-0 Swamp begins at W5+550

+1100 S-40'

W6 done runs S37°40'E-700'

+700 0 100.8 r.8 101.8 0 100.8 r.65 101.45

W7 runs N78°30'E-500'

W7+0 S-0 100.5 r.5 102.15 r.65 102.35 r.2 100.65 d.17

W7+200 S-55 102.6 r.2.6 102.8 r.2 102.8 0

+400 S-35 102.6 r.2.6 103.25 r.65 103.8 r.55 0 103.8

Top of high ridge 180' to left

W8 runs N43°E-700'

W8+0 S-0 103.35 r.3.35 106.3 r.9.5 103.9 r.3.4 102.7 d.1.2

+200 S-45 102.4 r.2.4 103.9 r.1.5 106.8 r.9.9 d.1.4 105.4

+400 S-60 102.2 r.2.2 102.7 r.2.7 104.4 r.11.7 113.4 r.9.0

+600 S-25 102.2 r.2.2 103.4 r.1.2 103.7 r.3 107 114.8 r.11.1

W9 runs N1°15'E-400'

W9+0 S-0 101.3 102.5 103 113.35

From 1140 point 108 to Lot 658

drop

250 300 350 400 450 500 550 600

105.5 101.9 101.5 102.5 102 103.4 level

102.5 103.7 103.4 104.6 level

B.M. at Camp grade 5.7' higher than Lake Windego

135' from W5+500 trail leading into woods from Camp grade

102.8 103.5 103.95 104 level

runs back into woods about 600'

fence running East-South

103.25 102.8 102.6 102.6 104.2 106 105.5 105 level

103.8 r.55 d.1.5 0 r.1.6 r.1.8 d.3 d.3

edge of new swamp

102.5 101 101.3 101.45 102 106.3 level

101 101.2 100.2 100.4 100.7 100.2 104.65 106

102 102 100.6 101.5 101.2 100.1 700

101.85 0 101.35 d.1 d.3 d.10

Big hill 20' higher 250x150

101.9 112.65 125 125.5 level

122 124.2 124.85 125.25 125.5 126.25

125.6 128.05 127.5 128.65 130 130.1

127.7 129.1 130.4 131.45 131 131.5 130.2 130.8 1298 770 800

110.75 116.3 112.9 119.9 117.9 118 119.4 119.2 N.E.G. 119 119.3 118.1

1140 to bank

		50	100	150	200
Wgt 200	S-25	101.3	102.55	103.65	105.55
400	S-10	102.5	104.1	105.6	107.1
W ₁₀ 100	N 70° 20' E	- 800'			
W ₁₀ +200	S-10	99.4	100.5	0	100.2
+400	S-20	101.0	102.85	104.25	106.45
600	S-10	100.8	101.95	102.85	105.45
800	S-100	101.5	101.5	107.4	

N 38° E from MC on
 559.5 ft between
 2196.6 ^{along section} from MC on W

250	300	350	400	450	500	550	600	dip 10' wide
118.35	119.4	123	125.7	127.25	128	152	150	ridge from 300 to 600
117	120.5	131.6	132.7	135.5	137	142.5	132	slopes down 100' north
102.8	108.85	120.75	122.4	124.75	128.5			level
108	101	102.45	115.7	120.7	124.4		130	
113	119.5	126.45	132.5	135.0	137		15.8	
101.35	103.0	109	116.1	123.9	128.5	134.7	136.5	
110.4	120.3	125.5	130.35	133.25	135	137	130	
114.95	119.7	125.2	134.85	139.9	141.7	143.0	142.0	
120.9	133.1	138.1	143.6	150.65	154	161.2	164.6	
113.5	122.2	125.0	132.2	135.5	142.55	142.8	133.4	fairly level

Cross Lake Tutam Cross + Woodigo 125.4 ft
 to A, +300'
 MC Corners
 indigo to traverse W₈ + 488.5

East Beach trail begins at Sec Cor. 1, 2, 3, 5, 36 → Elev. 109.1'

	50	100	150	200
N5°20'E 239	d.9	r.8	d1.1	d.75
N4°E 109.6	d2.4	109.6 d2.3		
N5°20'E 213	d.9	r.8	d1.1	d.75
S67°E 118.5	r.3	118.5 d.5		
S87°E 121.2	r.8	121.2 r.4		
N69°30'E 86.8		r.22.0		
S78°E 70.9		d.65		
N44°E 178.9	d.65	d1.0	d1.2	178.9
N50°30'E 113.9	d3.35		r.1	
N66°E 177.6	d.6	r.35	177.6 r.2	level
(N29°E *720)	r.3	r.25	to lake W. hills	
N81°E 180.2	d.4	r.3	180.2 r.5	
S82°E 154.2	d.3	0	154.2 0	level
S282°E 240.8	r.1	r.25	r.15	r.25
S15°E 190.8	d1.15	d1.3	d.5	
S130°W 104.	d.45	d1.3	points	
* continued thence S58°30'E 416.8 to O ₂				
N9°30'E 246.1	r.25	d.15	r.1.1	r.3.7
N25°20'E 122.1	r.9	d.25		
N18°30'E 230.3	d.3	d.6	d3.7	d.3
N54°40'E 172.3	d.1	r.1.9	r.1.45	
N64°E 122.4	d.65	d.10		

250 300 350 400

239
r.05

trail end thence N30°W then ^{approx} d2.7
(high ridge on east side)

213

200' 10' drop 5' + rise to level again at 300'

right left

cuts off here to 1/3 to North then to So.

d.6

1.0' lower than O₂

r.25

level to left

level 210 to left - drop

thence N54°E - 189.2 to Cor L 8 & Alley

Stu-109.85

Intersection of road Sec.

918	1000	1100	1200	1300	1400
	110.95	110.45	109.95	108.75	107.2
	r 1.1	d 1.5	d 1.5	d 1.7	d 1.05

Slope slowly down to

1/4 Cor Sec. 2435-2645.5
d 2.1 ft from 2600 to 1/4 Cor level

level from 1/4 Cor

100	200	300	400	500
d 3.8	r 6.2	r 3.45	r 4.4	d 7.35

road falls

300x300 SW
150' North

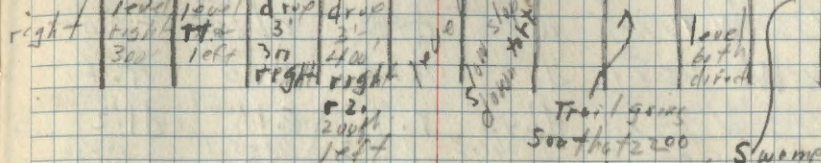
1775 ft to Mc Cor

East West Sec. Line

2.8
7.0

line is 918 ft west of Sec. line

1500	1600	1700	1800	1900	2000	2100	2200	2300	2400	2500	2600
106.1	106.3	106.15	105.55	105	105	104.2	102.85	102.45	102	99	26.00
d 1.0	r 1.2	d 1.5	r 1.6	d 1.6	0	r 1.75	d 1.55	d 1.2	d 1.45	d 5.25	12.3



Tel. Line + trail at 2350'

Extends 50' south + 450' North 15' East

B.M. Marsh - 3' higher than 2500'

road at 850'

600	700	800	900	1000	1100	1200	1300	1400	1500	1600
r 3.2	r 6.9	r 3.2	d 2.8							

level

600' South
slope down East for 15'
300' North

and
to 450' North

1/4 Cor.

Sec. 35 + 1 runs
S 89° W

918' along sec line

	50	100	150	200
(109.85)	109.1		107.85	109.9
N38°20'W 199.5	d.75	107.85	d.25	r.205
N22°W 228.1	d.2	d.1.8	e.1.5	r.4
N41°30'W 258.1	d.4.5	r.1	106.9	d.1.2
N20°40'W 221.5	r.1.0	d.75	105.7	d.4
N41°W 270.8	d.2	105.1	105.5	105.95
S74°W 185.2	r.3	d.5.5	r.4.5	d.1
S66°W 247.8	0	102.9	102.7	r.3
S48°20'W 252.4	d.5	r.2	d.5	d.3
S36°20'W 258.2	r.2.9	r.1	d.6	d.6
N79°W 433.1	d.4.5	d.4	99.5	0
N32°40'W 225.5	d.1.35	d.4.6	98.7	98.7

↓
same
↑

N41°60' at 100 on strip

N86°30'W 124'
S70°30'W 113.1
S57°30'W 257.7

→ general direction of
-100' more on same

Road traverse

	250	300	350
105.45			
d.2.5			
970.8			
d.2.9			
103.05			
r.2.5			
101.95			
d.1			
0 99.5			
335			
r.2			
99.7			
400			
r.2.75			
102.45			
105			

Cut N to Lck. Winadigo

Swamp along right side of this bearing
450' swamp 450' to left of iron bearing
" pass 450' to right

long swamp from here is N40°W -
bearing to so end of long swamp

Beginning at point of
Drop down 100' to left of

524°W	298.6	r. 326.3	r. 326.5	d. 2.1467	r. 1.6	124.4
55°30'W	111.4	132.95	133.95			
546°20'E	226.8	131.95	131.95	d. 5	131.45	r. 3
534°30'E	126.8	131.7	132.3	d. 1.5	132.15	
539°30'E	128.5	132.95	134.25	136.05	136.05	
52°E	195.3	137.8	138.2	136.1	136.1	130.2
539°40'E	101.8	136.52	136.65			
529°30'E	110.6	135.75	134.95			
567°E	173.3	134.95	134.1	134.45	134.45	
570°40'E	208.	132.85	131.35	132.65	132.65	133.65

↓ 850' along Secline
from below

400' S of 'y' is step
1070 S of 'y' is white
1426' S to MC.

CT 1000 bears S 6 W from (MC) 80.5'

Beginning at point of level after 524°W

N 32°30'W	145.1	d. 1.75	d. 4.05	d. 4.5		
584°W	106.	123.85	124.65	r. 3.2	128.5	
573°30'W	187.8	131.7	133.45	d. 2.5	133	131.8
N 79°W	151.8	130.65	r. 1	129.55	129.55	r. 55

trail taking N from road
starting point about 15 to 20' down

slope down about 15' in 400' to right
level to right after going up 5'
slope down to left
level to right after going up 5'
slope down gradually to left
level to right

Trail 35436
slope down very slowly to right
slope fairly fast down to left after 100' out
level 300' to left then down

down 5' to right then level
left up 3' also, then down to swamp - 450'

of 800' along S 2 from below

mark
post
could not find

128.50
4.65
123.85

298.6 that shows on 1st line of page

level left - level right 200' then drop way down gradually
level to left

level to left
for 400-500' Trail runs S 39°W to cottage from
same pt as N 79°W
drop 500' ft

N66°30' 2054 r1.7^{130.2} r1.0^{131.0} d.1^{132.0} r.75^{132.2}
N75°W 136.3 r1.55^{132.95} r1.5^{134.5} r2.0¹³⁶

↓
S26°20' 22.6 to Cav 27428 drop 38' to lake

level r +
slow rise left
road follows shore

(pump down by
shore 100' north
150 to 200' sand bank
hoosey)

From O2 + 900 to Lot Cor

Cor 13 + R1 N45°30'W 21' to Solar

" S44°30'W 14' to North

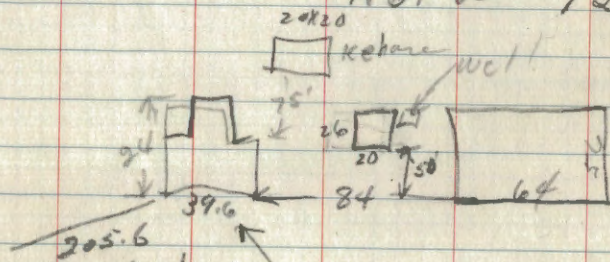
" S3°30'E 52.6' to Nor Cor

" 108' to Tennis Park

S19°30'E - 211.2' to

(From Nor Cor (64x56)) S87°40'W 96.4'

N67°W 129.6'



From Cor R2 + 14 N34°W 205.6 So Cor 39.6

N37°30'W 152.4' to Solar

" N47°30'W - 107' So

" N67°20'W - 45.5' So

" N70°20'W 32.8' to North

" S25°30'E 83.6' to Nor

S29°40'E + From Cor R2 + 14

North (South side of stake)
R4 (back corner) is N79°E - 60.8'

32x26 building (on L13) ✓

24x12 " 75' back + 50' North of pole 6/13

12x24 ✓ Trill. 100' back ✓

52x16 ✓ 2 Trill. 175' back ✓

No. Cor. of 64x56 ✓ Camp Windigo

to Solar of 28x16 ✓ at

to Solar of 20x18 ✓ at

get ✓

if 28x20 at ✓

Cor A 36x38 2 Trill. ✓ 200' + 275' back

Cor A 32x30 ✓

ac. A 26x26 } 12' apart

Cor A 36.4x Trill. + 70' back

to Cor 14 + 149.5' Trill. 60' "

From Coch 1460 to O₂ to

O₂ to back Eastern } 24x20

" " West } 24x22

" " " " } 26x34

" " West } 20x12'

3.5' rise
from O₂ level

~~570~~ 551°W 380.'

75' 59°30'W Tail 40' back of it ✓

517°E 115' Tail 150' back of it ✓

552°E 234.7'

566°40'E 222.6

— Workshop

Running North from

Line runs $N 1^{\circ} E$

16 loc at 830'

861' to Btm Sec 35

1546' to Lake Windigo

1646.7 to traverse line

797' from North M.C.

865' from imaginary line

$S 35^{\circ} E - 550.7$ to (A)

Cor $\frac{35}{36}$
2.1

rise at 600 on line about 20'
drop down again at about 800 on
line. ridge peters out a little
to the west + runs SE in the
other direction

(W₈ + 452.9)

on Cass Lake to imaginary sec. line
to East end M.C. ^{in the lake} corner

Traverse line (a) from Imag Sec

Sta. 0 N53³⁰W 67' to L Corner ✓
 N12⁰W 141' to Gauge ✓
 N41⁰⁰W 146' to House ✓
 Sta. 200 N38⁰W 84' to Cor. 1+2 ✓
 N17⁰W 119' to building (house) ✓
 400 N15⁰W 114' to cottage ✓
 N16⁰W 140' to Bookhouse ✓
 N42⁰W 88.9' to Cor. 3+4 ✓
 N49⁰W 146' to cottage ✓
 600 N16⁰W 51' to Cor. 4+5 ✓
 at 300 N39⁰W 49.5' to Cor. 5+6 ✓
 at 400 N23⁰W 88' to Cottage ✓
 " N51⁰W 82.7' to Cor. 5+6 ✓
 b+100 N20⁰W 121.5' to small yellow house ✓
 Small shed back 20' x 20' eas ✓
 N41⁰W 126' to large yellow house ✓
 b+200 N52³⁰W 93.2' to house on L-7 ✓
 Small shed on cartilage ✓
 b+200 N72⁰W 163' ft to large porch ✓
 b+400 N19⁰W 108' to 10x30 b+ house ✓
 " N53³⁰W 117' to large cottage ✓
 b+610 N75⁴⁰W 86.4' to Cor. 9+10 ✓
 " N31⁰³⁰W 100.3' to Cap ✓ to 1-50 ✓
 N9⁰W 123' to b+ 20x30 ✓

Cor. 5- to 5+6 S 70° 30' W

small yellow house } all on left

wood shed 10' just behind of west of house

small
 130' from b+ 200 ✓
 house on L-7 ✓

b+ 600 ✓

sta. 0 to 600 - West (sta. 0) - 3.50'
 sta. a to 400 South 75° West
 Sta. b to 1000 S 60° 30' W
 c to 1300 S 52° 15' W
 d to 782.7 S 25° W
 e to 645.8 N 86° 30' W
 F to 294.0 N 6° 40' W
 G to 1300.00 N 30° W
 H to 553.2 N 20° E
 I to 650' N 25° 40' W
 350.8 along I to Sec. line
 .. along to BT is 564° E
 J to 1140' N 58° W
 J+1000 is 552° 30' W 106' from M
 K to 693' N 14° E
 L to 1184' N 24° 10' W
 M to 516.4 N 69° 50' W
 N to 650' N 9° E
 O to 350 N 5° 10' W
 P ~~to~~ to 650 N 31° W
 Q to 300 N 60° 15' W
 R to 795.4 S 88° 30' W to end of
 S to 300 N 36° 30' W then go
 T to 300 N 61° E
 U to 800 N 16° E
 u + 886.5 is 694.0' W end of

South of Section $\frac{357.3}{271}$ 605 E W
 598
 496
 5000
 306
 873
 21027
 326
 645
 34
 000
 4493
 5000
 4000
 187
 189.
 4493
 50
 260
 4803
 100
 2493
 670
 583W
 26.93
 13.07
 11460
 2850
 13.07
 104 39.
 458 298.
 796 939
 706
 2094 127
 3500
 3424
 1276
 1168
 1276
 86.6
 520.
 540.6
 2423.2
 13.07
 1/16 Sec 27434
 write - 600' more to end of point
 in line same N 190° 30' E

b+700 N21°30'W 130.5' to 10x12 low wall ✓

.. N42°W 90.3' to 30x30 cot ✓

.. washed 50' back of cot on line

.. N68°30'W 147½' to 10x30 back house ✓

b+900 N43°W 87.8' to 40x30 cot ✓

3 sheds 1-70x20 & 2-10x12 ✓

directly behind cot ✓

b+1000 N59°W 133.88' to 34x34 cot ✓

N41°W 133' to 10x12 ice ✓

~~19.5'~~ to 12x12 bldg 20' back ✓

N78°30'W 125' to cot ✓

S79°W 119' to low 14x13 ✓

ct+100 N66°30'W 102.5' to 30x50 cot ✓

1 shed 50' back of cot ✓

1 cow house on east line at 180' ✓

ct+300 N59°30'W 110.6' to cot 30x50 h 45' ✓

N2°W 160.85' small wt 90x10 L 45' ✓

ct+400 N59°W 110' to cot 30x50 ✓

shed 12x20 + 70' / 40' back ✓

.. N42°W 72.0' cor 15+16 ✓

ct+600 N29°30'W 170' 20x12 at ✓

.. N46°W 214' 20x12 " ✓

.. N29°W 151' 16x12 " ✓

.. N17°W 80.5' A+16 ✓

ct+700 N51°W 127.5' 20x10 cot ✓

~~N70°W~~ N170°W 157' 20x10 cot ✓

ct+900 N42°W 134.5' 10x25 wt ✓
N71°30'W 145' .. ✓

ct+900 N16°30'E 115.5' to iron stake ✓

ct+1000 N45°15'W 163' to 40x20 cot ✓

ct+1100 N80°30'W 102' to 60x75' L shape ledge ✓

ct+1100 = 100' in on strip ✓

.. N65°W 103' 60x20 kitchen ✓

.. N29°15'W 99' 40x20 open shed ✓

.. N20°15'W 134.5' (12x12) ~~Tomatoes~~ ✓

ct+1100 - 12 small sheds behind ✓

ct+1100 - N34°15'W 49.5' 14x10 600 house ✓

d+160 at 200' along strip ✓

N22°W 711' 24x10 cot ✓

N62°W 104.5' 12x18 cot ✓

S35°W 141.0' 50x20 cot ✓

S46°W 173' 12x18 cot ✓

S26°W 199' 18x14 " ✓

S110°W 264' 12x18 " ✓

I+300^{100' on strip} S26°30'E 15.3' to cor 37 ✓

.. N10°30'W 38.4' to cottage on L-37 ✓

.. ^{100' on strip} to left 60' back ✓

I+500^{100' on strip} N35°W 40.5' to cor 35+37 ✓

.. N14°30'W 50.5' to cottage 30x20 ✓

.. S36°30'E 40.1' " " 30x20 ✓

(J-1100) 100' in on strip ✓

N21°30'E 64' to cottage C 50x20 ✓

N59°W 108' to " ✓

N64°W 25.4' to cor 33x34 ✓

ct+300^{100' on strip} S72°W 15' to cor 33+37 ✓

.. N66°W 59.7' to wt. 100' ✓

K+600^{100' on strip} N14°W 66.2' to cabin from 150' on strip 30x40 ✓

.. but then on above 90' in from stake (12x30) ✓

L+200 at 100' on strip ✓

.. N60°W 176' to cor 33x24 ✓

.. N34°W 47.1' to cottage 30x30 ✓

.. S35°E 89' " (N West) 30x20 ✓

L+400 at 100' on strip ✓

.. S82°W 137' to cottage 20x45 ✓

L+600 at 50' on strip ✓
S48°E - 64' to 20x30 lot ✓
N10°E 25.7 to cor 21+A ✓
N1°E 40.6 to cor A+20 ✓
N3°E 93.6 to cottage 20x20 ✓

L+800 - 100' along strip cor 19+20 at 91' on strip ✓

P+600 - N56°30'E 122' to cottage ^{lot 2} 20x14 ✓

" S77°E 142' to cor A+2 ✓

Q+0 - Swamp ^{the} extends from 600 to 900 on strip

Swamp is 200' wide running N34°W.

from 600' on strip

X - old shack 75' SW of X ✓
area along y is flat over to swamp

V to 369.2

W to 200

X to 205

Y to 250

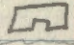
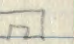
N 10° 15' E

S 53° 30' E


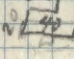
S 71° 45' E

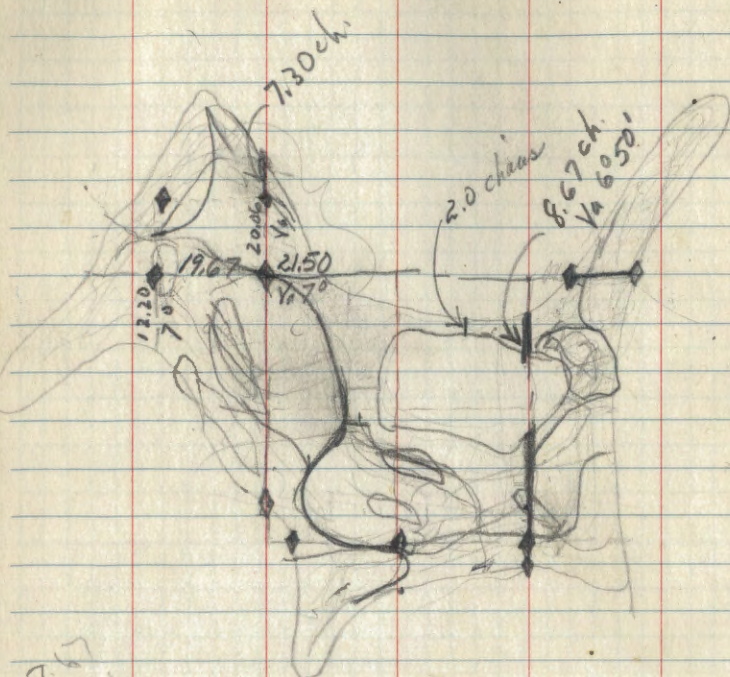
N 71° E

Y is 688.5' South of ~~the~~ 55/6 227

D₃+100 Cor 12+13 bears S 23° E 22' ✓
 " South cor of 20x40^{1/2} bears N 37° W ✓
 D₄+10' Cottage N 30° W 9' to N corner ✓
 D₄+100 " S 85° W 19.2 " ✓
 D₄+100 S 24° 30' E 22.2 to cor 106+11 ✓
 D₄+200 Cottage S 60° W 23' to N corner ✓
 D₄+300 " N 82° W 32.2' to " ✓
 D₄+378 S 89° W 19.5' to Cor. Alley ✓
 D₅+158.7 Ct S 10° W 70.3 New 30x20 m ✓
 " S 28° W 16.9 cor # 79 B ✓
 " Ct S 66° W 69.8 to N cor 20x14 on L 8 ✓
 " small ct on L 7 N 62° W 92.3 to S corner (1.2 x 1.5) ✓
 " large ct on L 7 N 25° W 108.1 to S corner " ✓
 " Ct N 42° W 55' to South N " ✓
 D₆+200 S 30° W 3.4 to cor 5+6 ✓
 D₆+433 Ct 60x30  S 39° W 10' North ✓
 " Ct 18x18 S 85° W 69' So. ✓
 " 60x30  N 27° 30' W 47.6 So. ✓
 D₈+200 S 14° W 7' from 200' on strip ✓
 D₉+387 S 40° E 22.6 from 250 on strip ✓
 N 53° E 28.4 cor 1+2 ✓
 D₉+600 at 300 m strip ✓
 " S 17° 45' E 139' to cottage North ✓
 " S 35° E 62.6 to cor # 7+ ✓
 " N 41° 45' E 3.9 to Cottage So ✓
 D₉+400 S 50° 30' W 47.4 old log ✓

done

28' ✓
 30x20 on L-11 ✓
 30x36 L-10 b ✓
 20x45 ✓
 30x34 - shed 60' back + 1/4 to North ✓
 tail back - 130' ✓
 + 8 ✓
 L 5 shed 60' back + little North ✓
 ✓
 L 8 ✓
 (1.2 x 1.5) ✓
 36x40  2 tail 120' back / cut - 100' apart ✓
 boat house at shore ✓
 20x40  Flat area at shore 15' wide ✓
 ✓ boat house at shore between 2 large bldgs ✓
 corner L flat at shore 40' wide ✓
 cor ✓
 to Ct. 30x18 on L 3 ✓
 strip to Pagoda ✓
 ✓
 end 30x22 ✓
 ✓
 with end 30x40 ✓
 cabin 30x20 North end ✓



8.67
 52.02
 52.02
 52.02

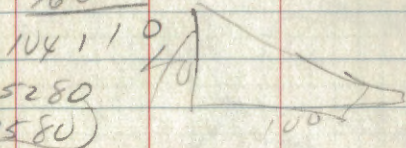
12.85 13.55
 8

4.1 4.75
 6.1
 8
 13.25
 27.35

133.2
 131.7
 129.4
 123.5
 119.1

11.9
 11.69
 11.4

$$\begin{array}{r}
 600 \\
 9 \overline{) 766} \\
 \underline{540} \\
 1041 \\
 \underline{5298} \\
 766
 \end{array}$$



$$\begin{array}{r}
 3700 \overline{) 10000} \\
 \underline{2640} \\
 1080 \\
 \underline{11600}
 \end{array}$$

$$\begin{array}{r}
 98 \overline{) 1080} \\
 \underline{96} \\
 100 \\
 \underline{98} \\
 20
 \end{array}$$

$$\begin{array}{r}
 108 \\
 \hline
 20.8 \overline{) 1600}
 \end{array}$$

END OF BOOK

CONTAINS MANY
BLANK PAGES &
MATH WORK