

No usefull notes ?

MINING  
TRANSIT BOOK  
Book #1

T148N  
R30W  
R31W

CCC

75

TABLES FOR EXCAVATIONS AND EMBANKMENTS.

DISTANCES FROM CENTER OF ROADWAY FOR CROSS-SECTIONING.  
ROADWAY 18 FEET WIDE. SIDE SLOPES 1 TO 1.  
FOR SINGLE TRACK EXCAVATION.

	0	.1	.2	.3	.4	.5	.6	.7	.8	.9	
0	9.0	9.1	9.2	9.3	9.4	9.5	9.6	9.7	9.8	9.9	0
1	10.0	10.1	10.2	10.3	10.4	10.5	10.6	10.7	10.8	10.9	1
2	11.0	11.1	11.2	11.3	11.4	11.5	11.6	11.7	11.8	11.9	2
3	12.0	12.1	12.2	12.3	12.4	12.5	12.6	12.7	12.8	12.9	3
4	13.0	13.1	13.2	13.3	13.4	13.5	13.6	13.7	13.8	13.9	4
5	14.0	14.1	14.2	14.3	14.4	14.5	14.6	14.7	14.8	14.9	5
6	15.0	15.1	15.2	15.3	15.4	15.5	15.6	15.7	15.8	15.9	6
7	16.0	16.1	16.2	16.3	16.4	16.5	16.6	16.7	16.8	16.9	7
8	17.0	17.1	17.2	17.3	17.4	17.5	17.6	17.7	17.8	17.9	8
9	18.0	18.1	18.2	18.3	18.4	18.5	18.6	18.7	18.8	18.9	9
10	19.0	19.1	19.2	19.3	19.4	19.5	19.6	19.7	19.8	19.9	10
11	20.0	20.1	20.2	20.3	20.4	20.5	20.6	20.7	20.8	20.9	11
12	21.0	21.1	21.2	21.3	21.4	21.5	21.6	21.7	21.8	21.9	12
13	22.0	22.1	22.2	22.3	22.4	22.5	22.6	22.7	22.8	22.9	13
14	23.0	23.1	23.2	23.3	23.4	23.5	23.6	23.7	23.8	23.9	14
15	24.0	24.1	24.2	24.3	24.4	24.5	24.6	24.7	24.8	24.9	15
16	25.0	25.1	25.2	25.3	25.4	25.5	25.6	25.7	25.8	25.9	16
17	26.0	26.1	26.2	26.3	26.4	26.5	26.6	26.7	26.8	26.9	17
18	27.0	27.1	27.2	27.3	27.4	27.5	27.6	27.7	27.8	27.9	18
19	28.0	28.1	28.2	28.3	28.4	28.5	28.6	28.7	28.8	28.9	19
20	29.0	29.1	29.2	29.3	29.4	29.5	29.6	29.7	29.8	29.9	20
21	30.0	30.1	30.2	30.3	30.4	30.5	30.6	30.7	30.8	30.9	21
22	31.0	31.1	31.2	31.3	31.4	31.5	31.6	31.7	31.8	31.9	22
23	32.0	32.1	32.2	32.3	32.4	32.5	32.6	32.7	32.8	32.9	23
24	33.0	33.1	33.2	33.3	33.4	33.5	33.6	33.7	33.8	33.9	24
25	34.0	34.1	34.2	34.3	34.4	34.5	34.6	34.7	34.8	34.9	25
26	35.0	35.1	35.2	35.3	35.4	35.5	35.6	35.7	35.8	35.9	26
27	36.0	36.1	36.2	36.3	36.4	36.5	36.6	36.7	36.8	36.9	27
28	37.0	37.1	37.2	37.3	37.4	37.5	37.6	37.7	37.8	37.9	28
29	38.0	38.1	38.2	38.3	38.4	38.5	38.6	38.7	38.8	38.9	29
30	39.0	39.1	39.2	39.3	39.4	39.5	39.6	39.7	39.8	39.9	30
31	40.0	40.1	40.2	40.3	40.4	40.5	40.6	40.7	40.8	40.9	31
32	41.0	41.1	41.2	41.3	41.4	41.5	41.6	41.7	41.8	41.9	32
33	42.0	42.1	42.2	42.3	42.4	42.5	42.6	42.7	42.8	42.9	33
34	43.0	43.1	43.2	43.3	43.4	43.5	43.6	43.7	43.8	43.9	34
35	44.0	44.1	44.2	44.3	44.4	44.5	44.6	44.7	44.8	44.9	35
36	45.0	45.1	45.2	45.3	45.4	45.5	45.6	45.7	45.8	45.9	36

*Linear Survey Notes  
Robideau Camp Area  
Blackduck District*

*Chippewa National Forest*

# Index

T. 140 N. R. 30 W

Section 1

" 2

" 3

" 4

" 5

" 6

" 7

" 8

" 9

" 10

" 11

" 12

" 13

" 14

" 15

" 16

" 17

" 18

" 19

" 20

" 21

" 22

" 23

Page

2

3

4

5

6

7

8

9

10

11

12

13

14

15

16

17

18

19

20

21

22

23

T. 140 N., R. 30 W

Section 24

" 25

" 26

" 27

" 28

" 29

" 30

" 31

" 32

" 33

" 34

" 35

" 36

Page

24

25

26

27

28

29

30

31

32

33

34

35

36

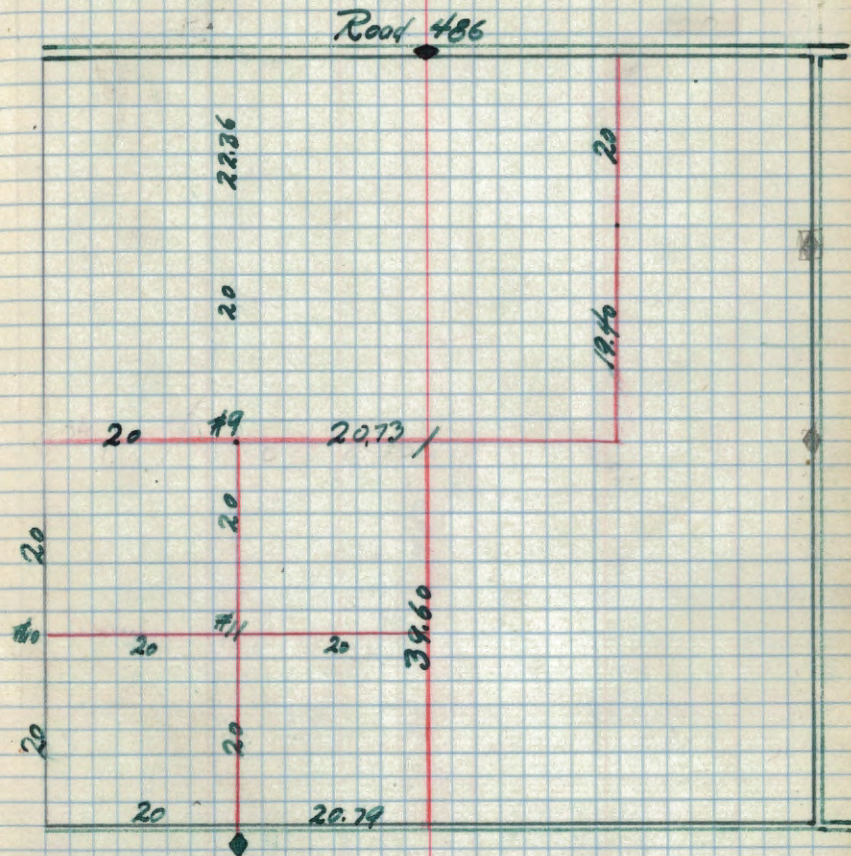
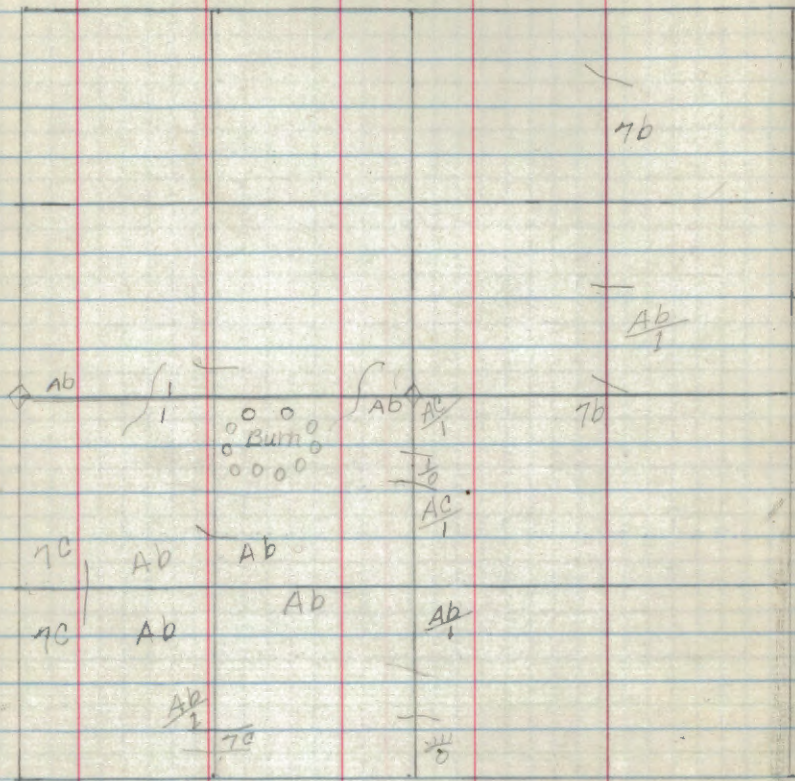
T. 148 N., R. 31 W.

Section

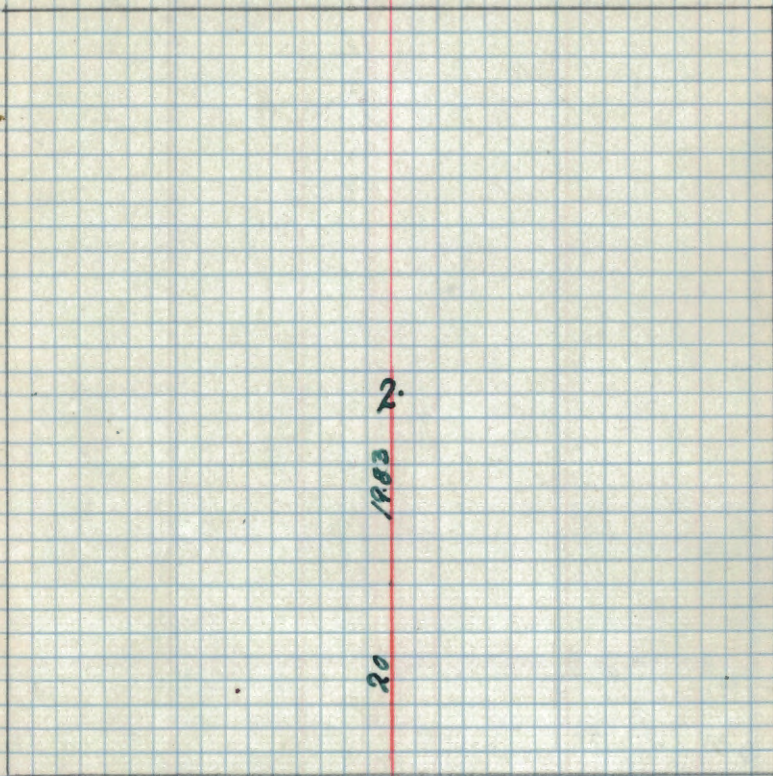
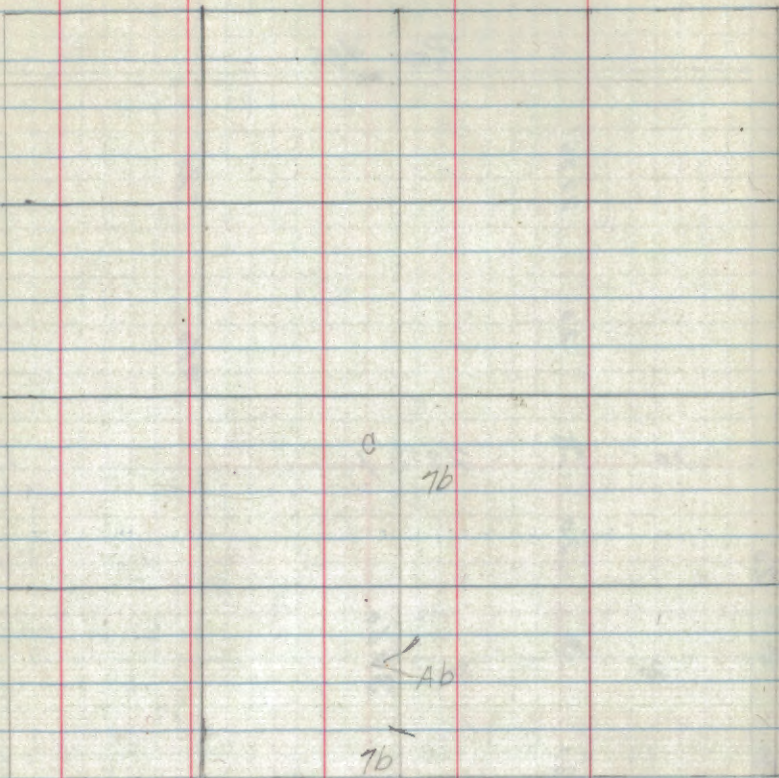
		Page
	1	39
"	2	<del>40</del>
"	3	41
"	4	42
"	5	43
"	6	44
"	7	45
"	8	46
"	9	47
"	10	48
"	11	49
"	12	50
"	13	51
"	14	52
"	15	53
"	16	54
"	17	55
"	18	56
"	19	57
"	20	58
"	21	59
"	22	60
"	23	61
"	24	62
"	25	63

T. 140 N., R. 31 W.

Section		Page
	26	64
"	27	65
"	28	66
"	29	67
"	30	68
"	31	69
"	32	70
"	33	71
"	34	72
"	35	73
"	36	74

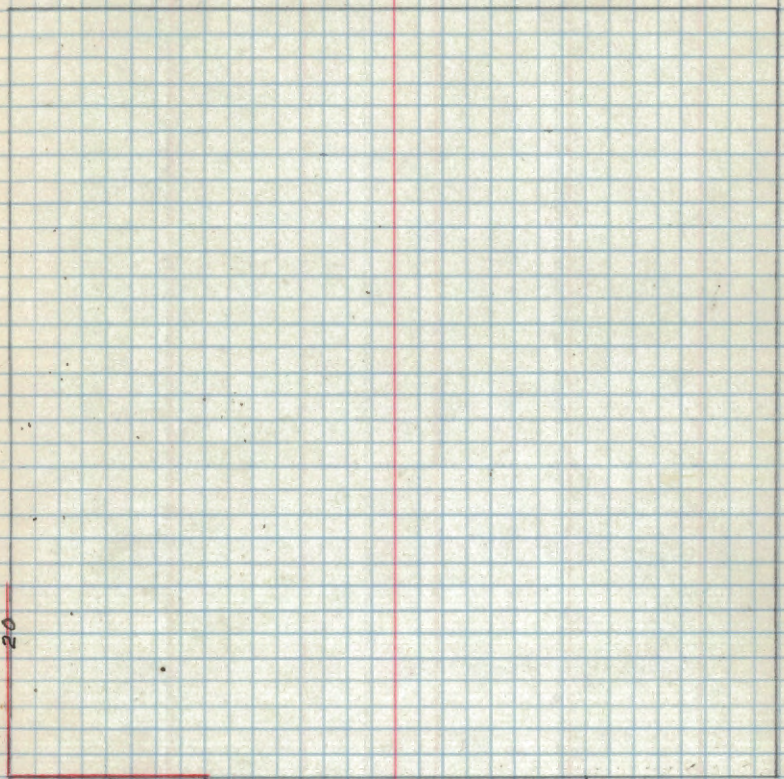
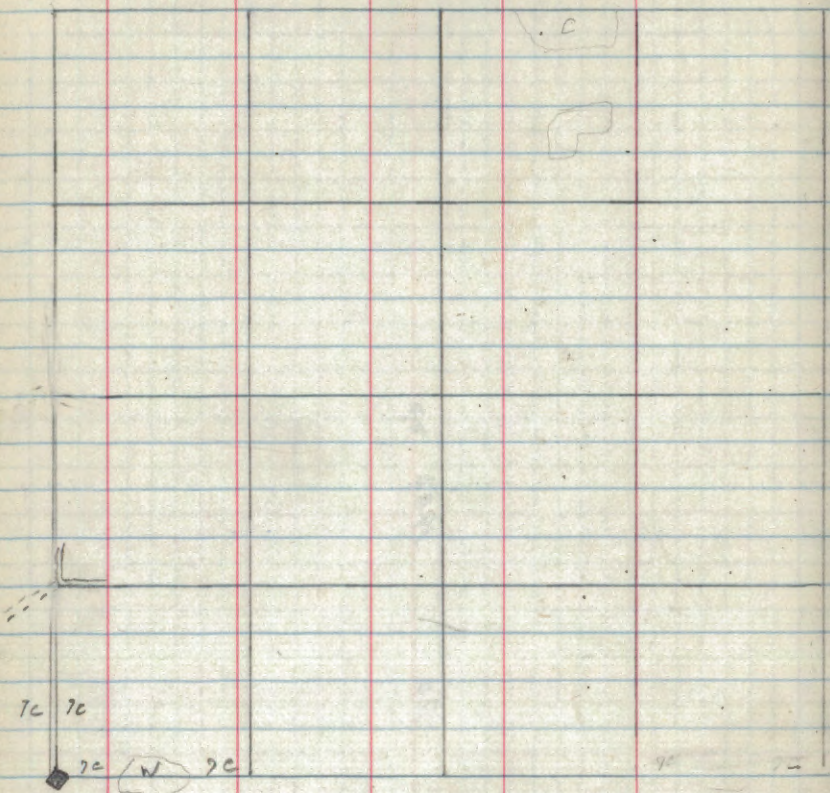


1/6 cor. #10 is 22 links N. and  
 29 links south of corner on W.  
 section line.  
 1/6 cor. #11 is 65 links N. and 1.39  
 chs. S. of corner on N. & S. 1/6  
 line.  
 1/6 cor. #9 is 1.77 chs. S. and 1.22 chs. W.  
 of cor. on E. & W. 1/4 line.



$C\frac{1}{4}$  Corner on E & W line is 1  
ch. East of line from South.

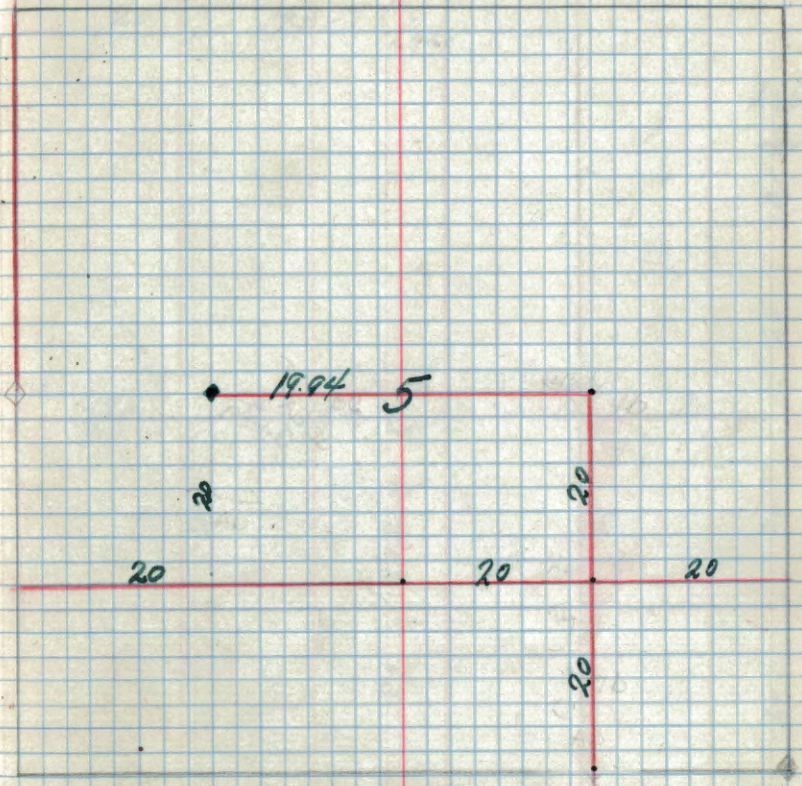
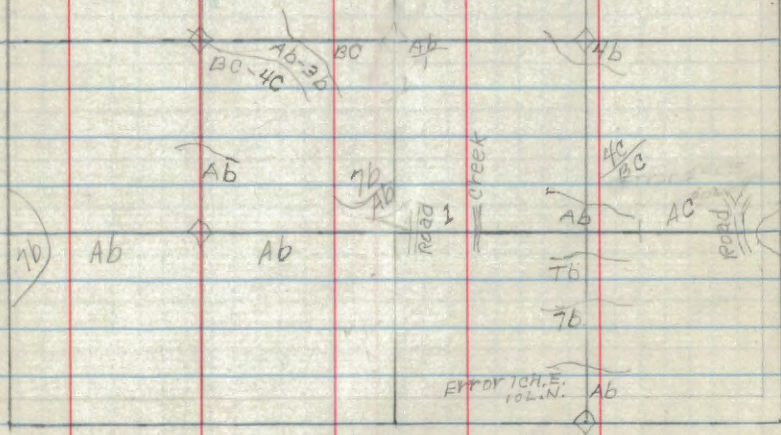




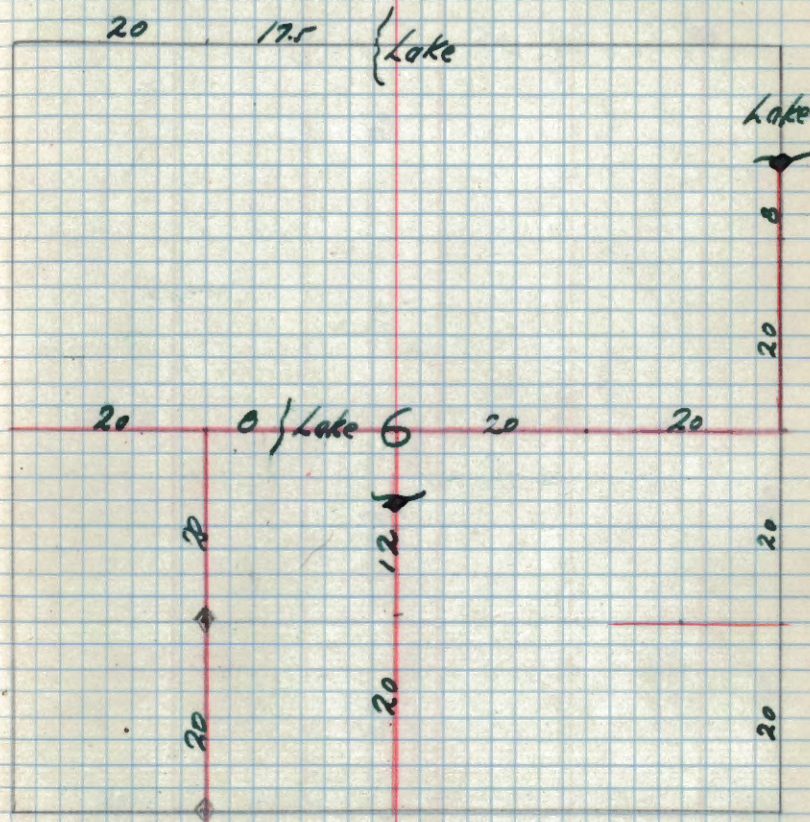
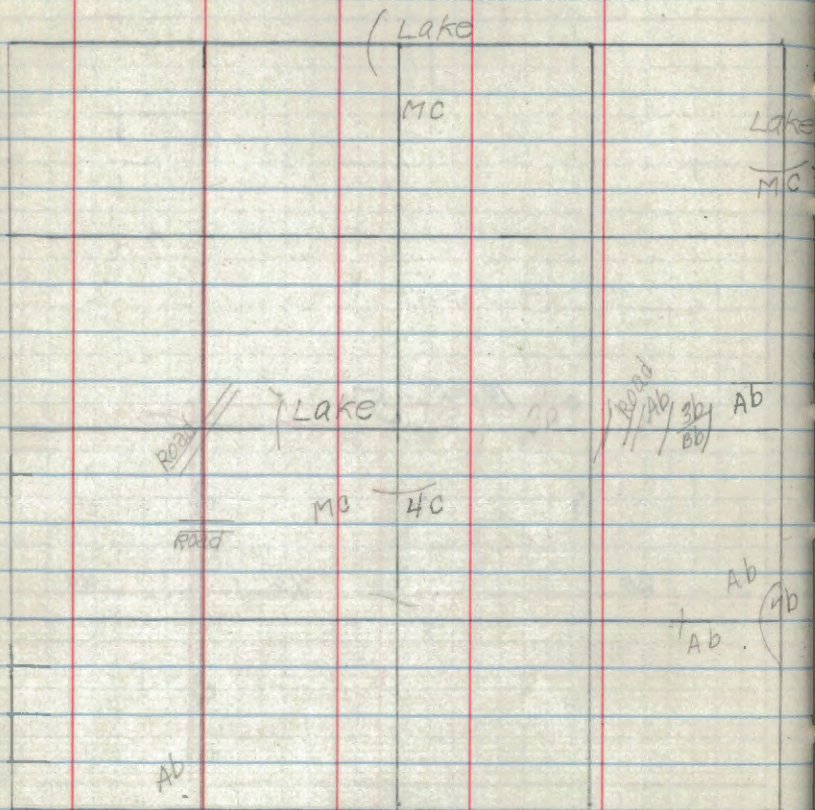


lake

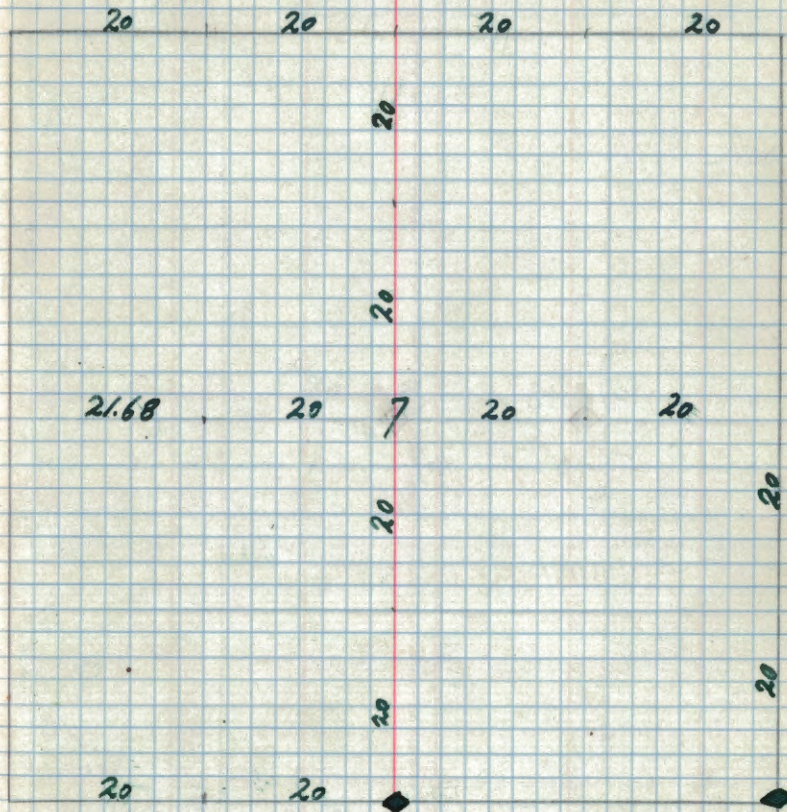
MC



App. 1/6 Cor. #15 1 ch. W. and 10 h.s. of est. corner.  
 App. #14 cor. 39 links from correct cor.



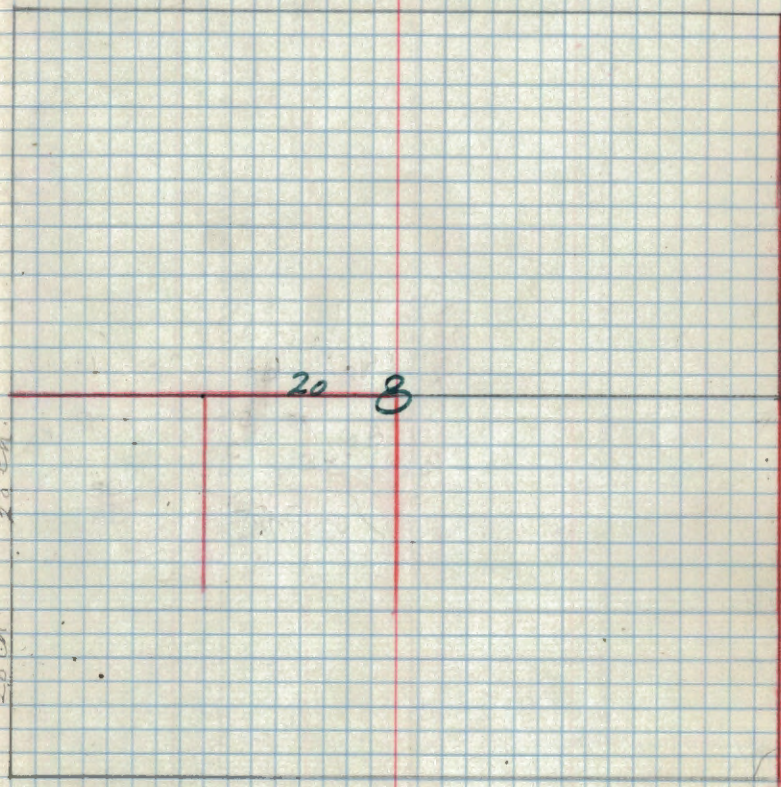
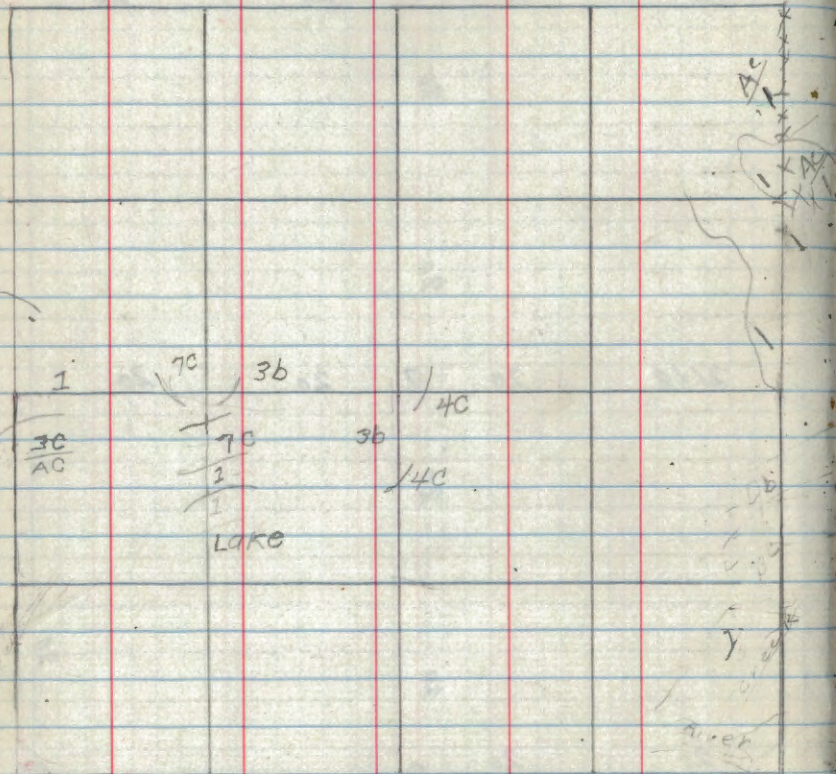
Bearing Trees but no old corners on N. line.  
 M.C. at 68 ch. N. on E. Sec. Line - 2 ch.  
 to N. of App. Cor.  
 App. #12 1/6 Cor. 1 ch. W. of Tree Pipe.

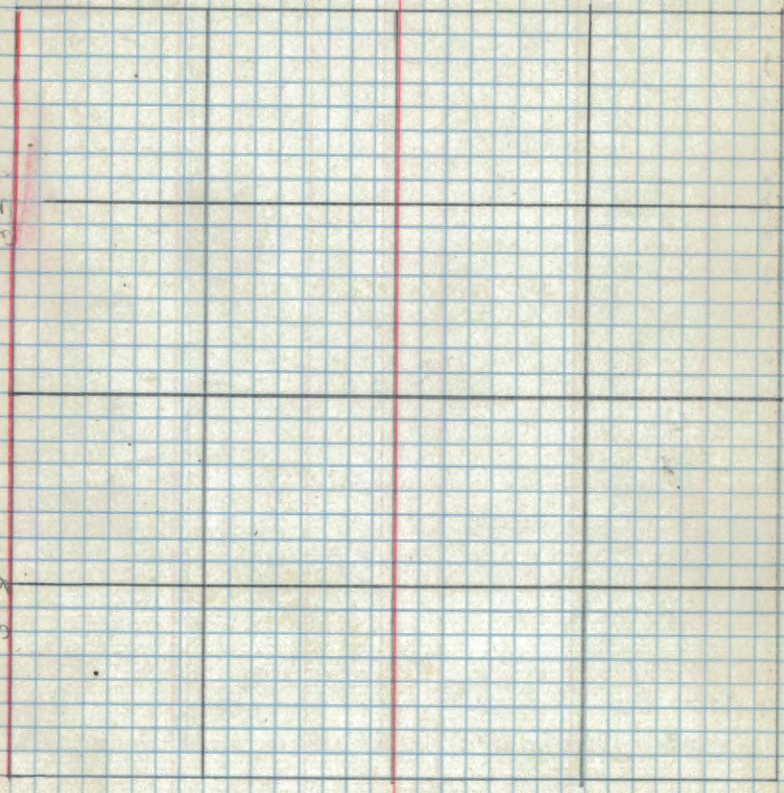
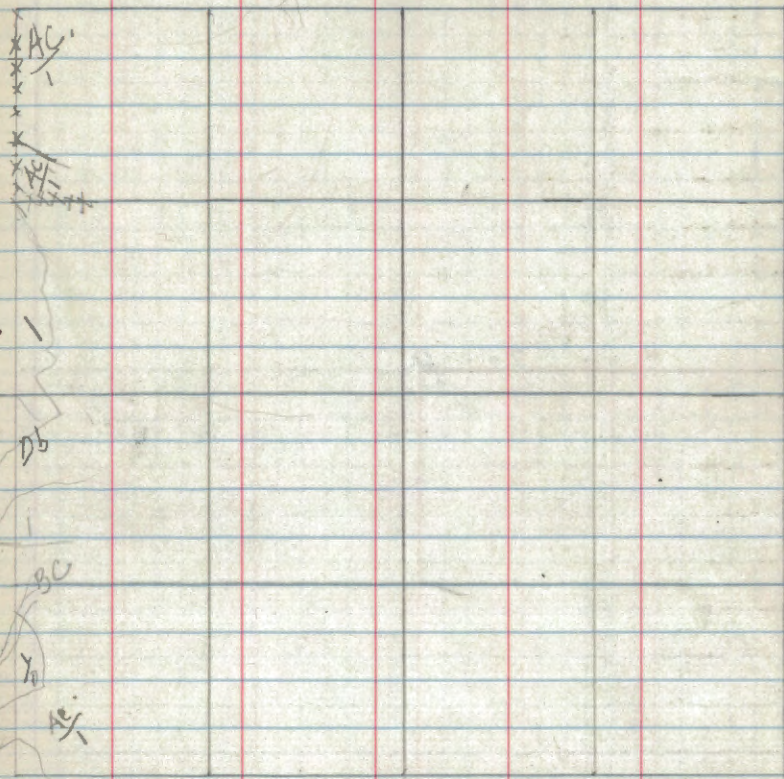


App.  $\frac{1}{4}$  Cor. (W) is 1.40 ch. N. of  
doubtful corner.

App.  $\frac{1}{4}$  Cor. is 1 ch. E. and  $1\frac{1}{2}$  ch. N.  
of Old G.L.O. Corner.

S.E. Cor. (G.L.O.) is 3 ch. 16 links S. of  
App. Sec. Cor.

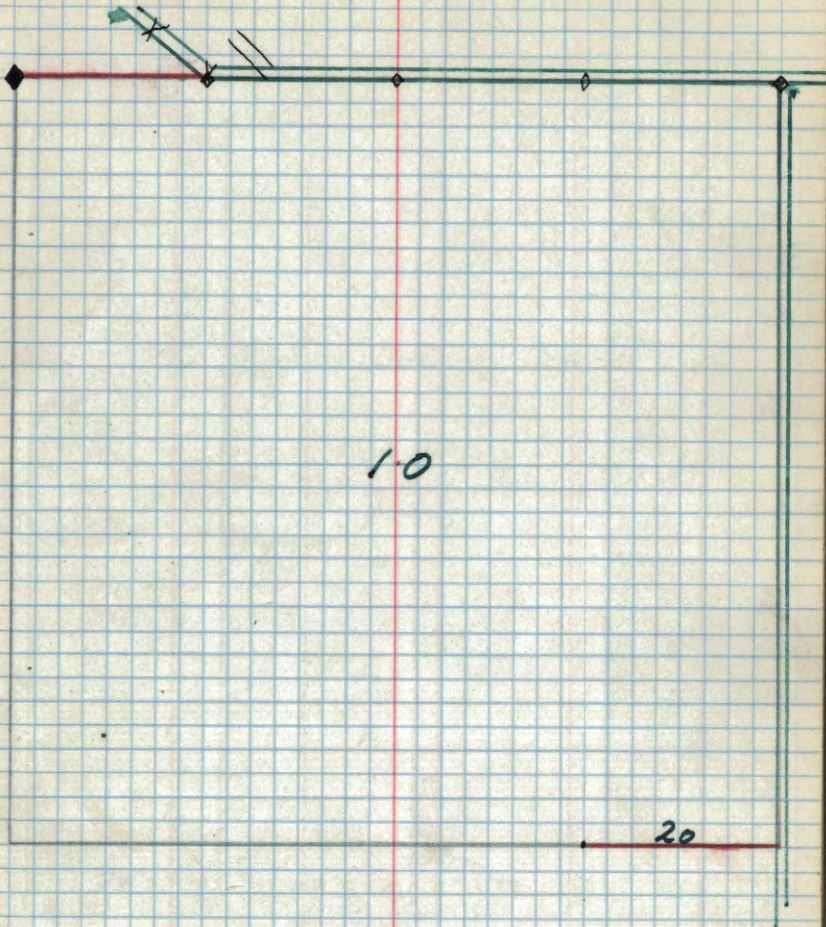




7c W 7c  
7c 7c

7c 1. / 7c / 2  
5 / 5

10





//

20

20

20

20

BT

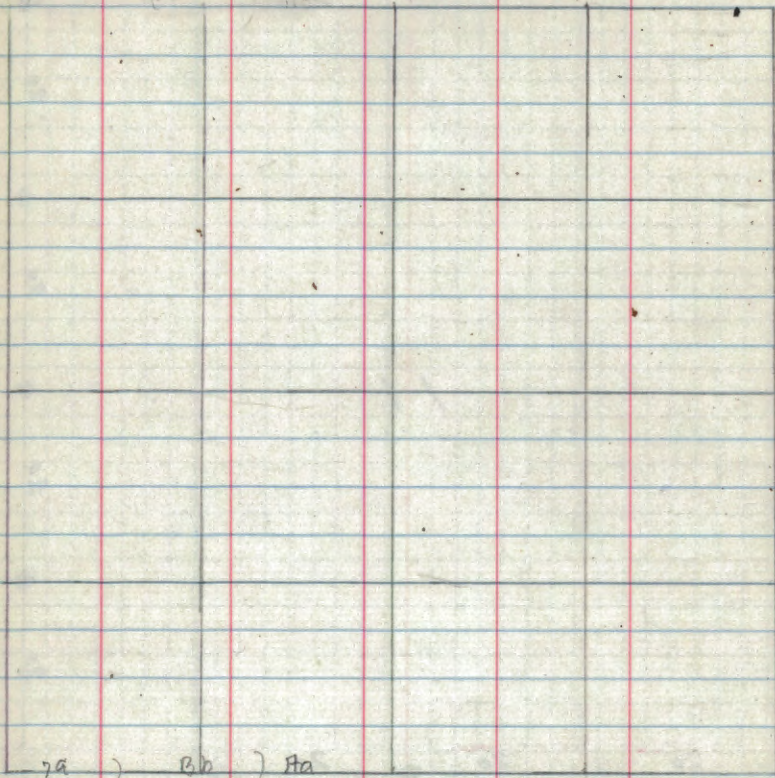
//

20

20

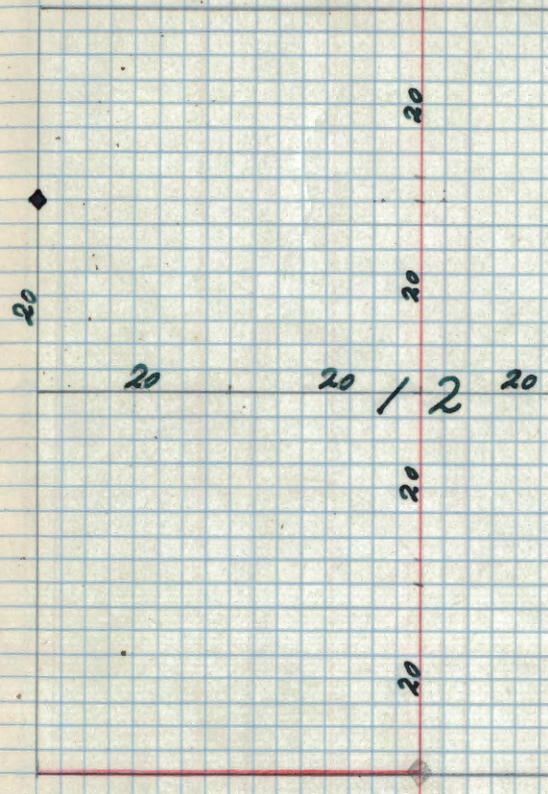
20

BT

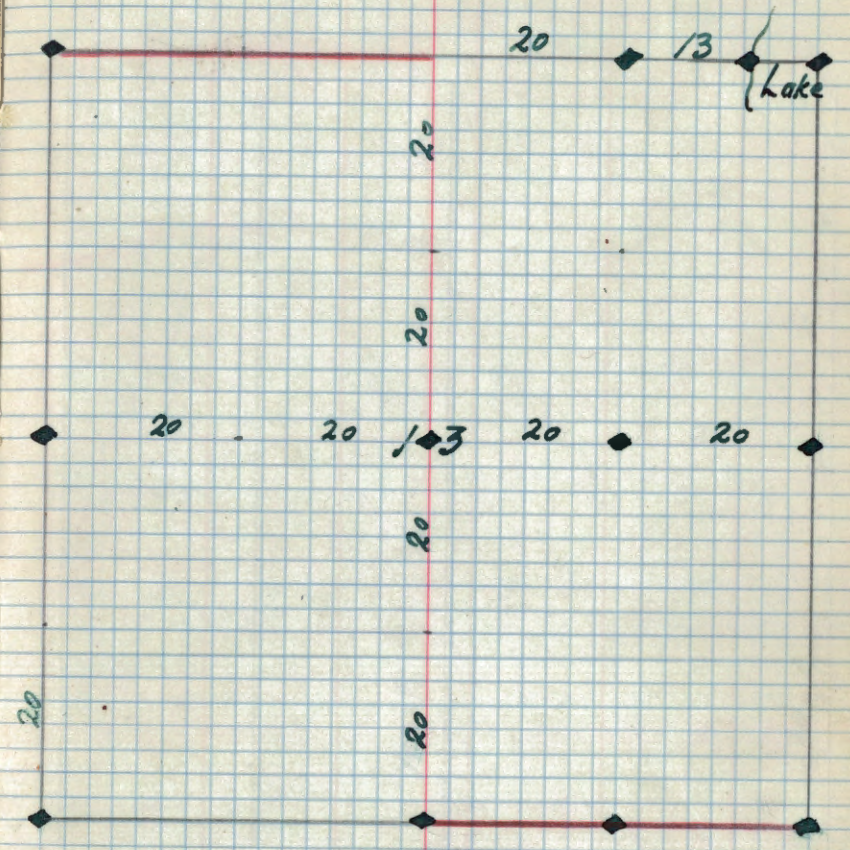
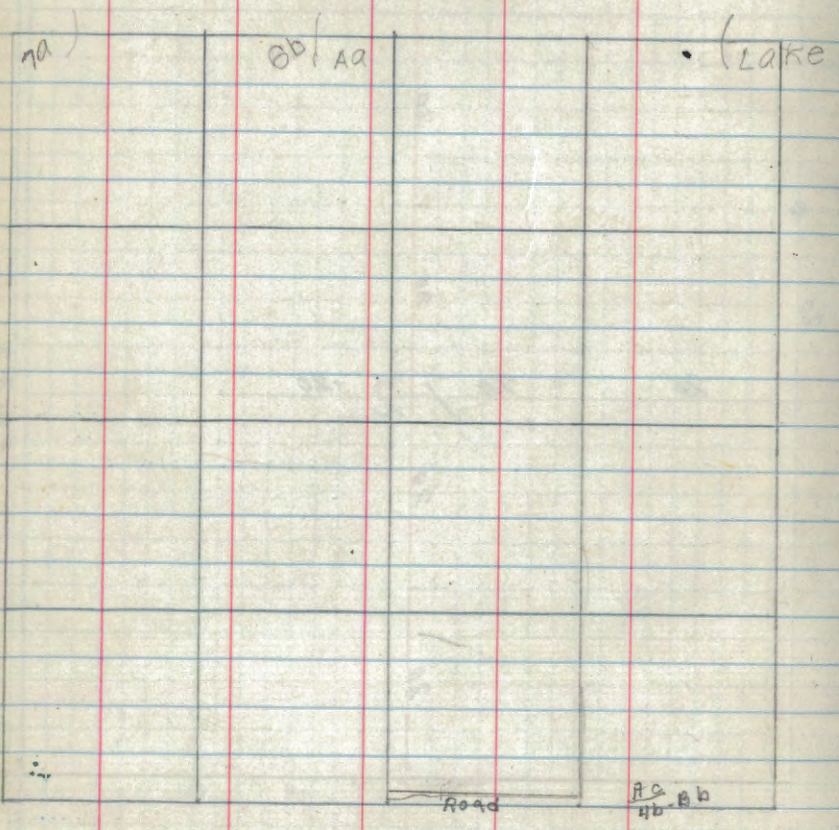


F.H. #3

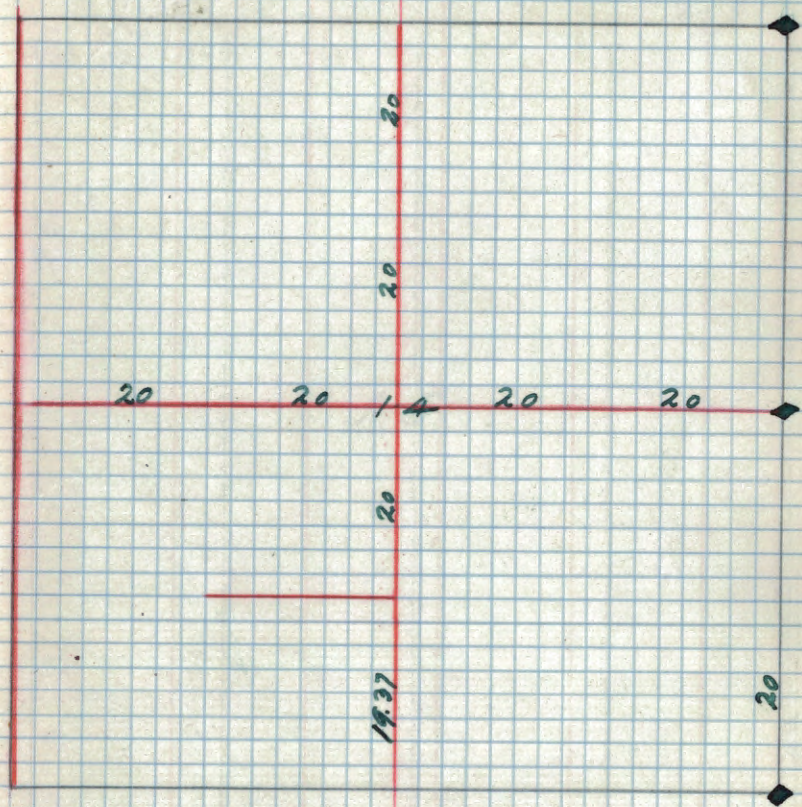
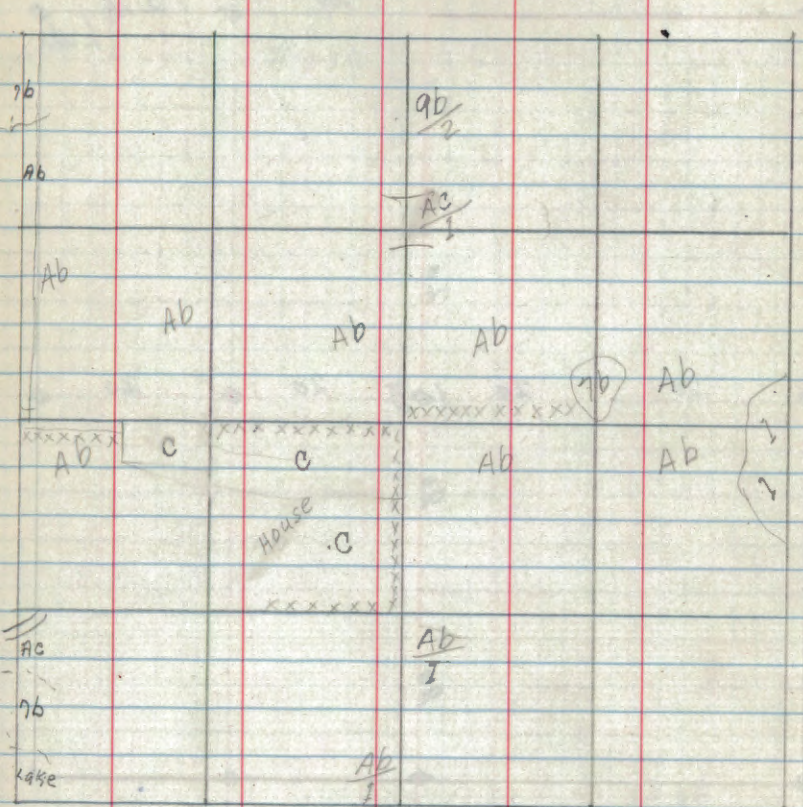
7a ) Bb ) Aa



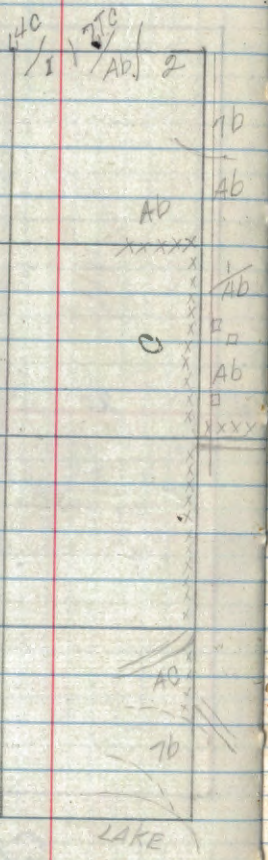
F.H. #3



M.C. at Lake 44 Linter S. of N. Line.  
 Old #1 50 linter S. of App. Car.

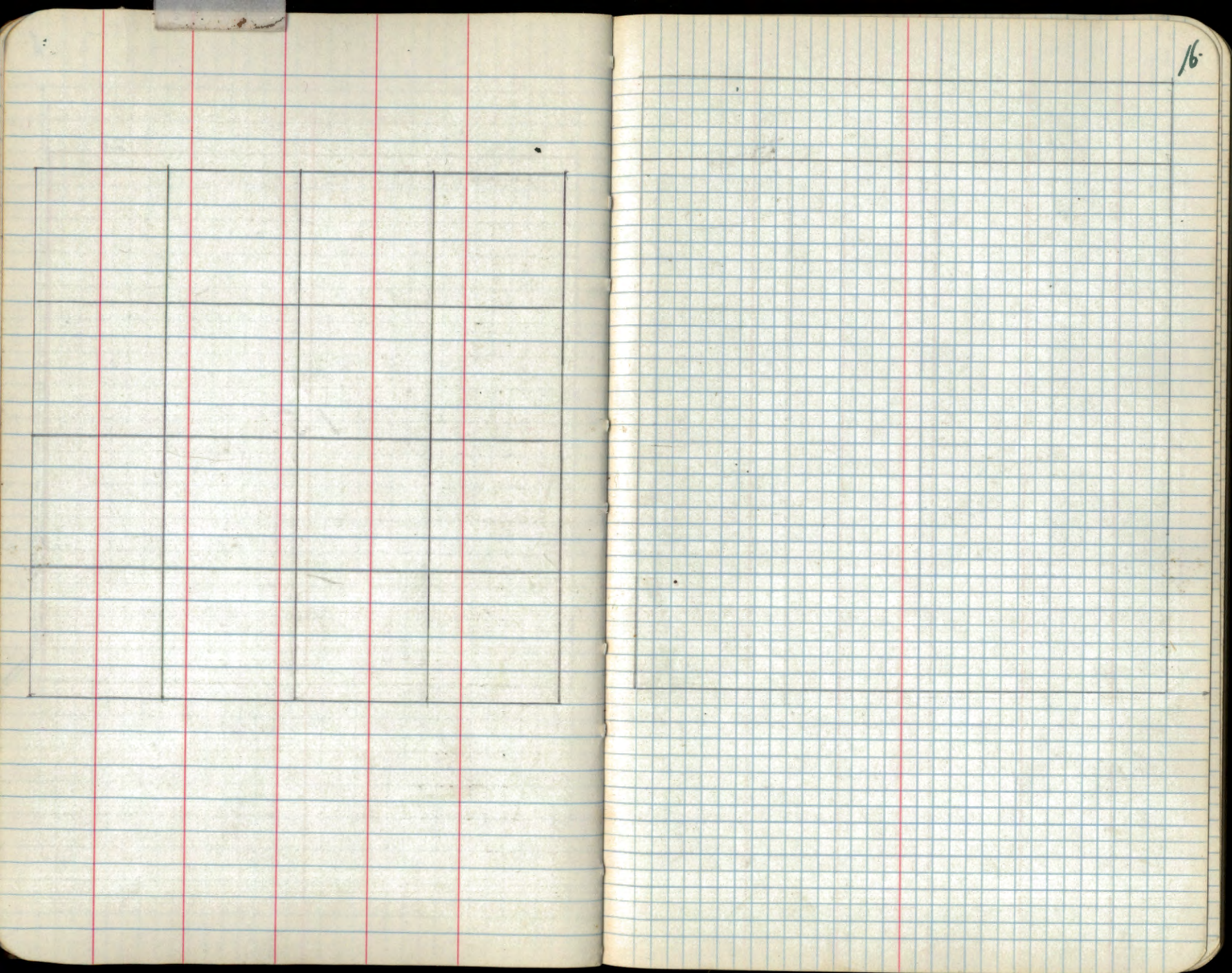


6 1/2 Corner on N.E. line is  
 1.12 chs N. and 10 links East.

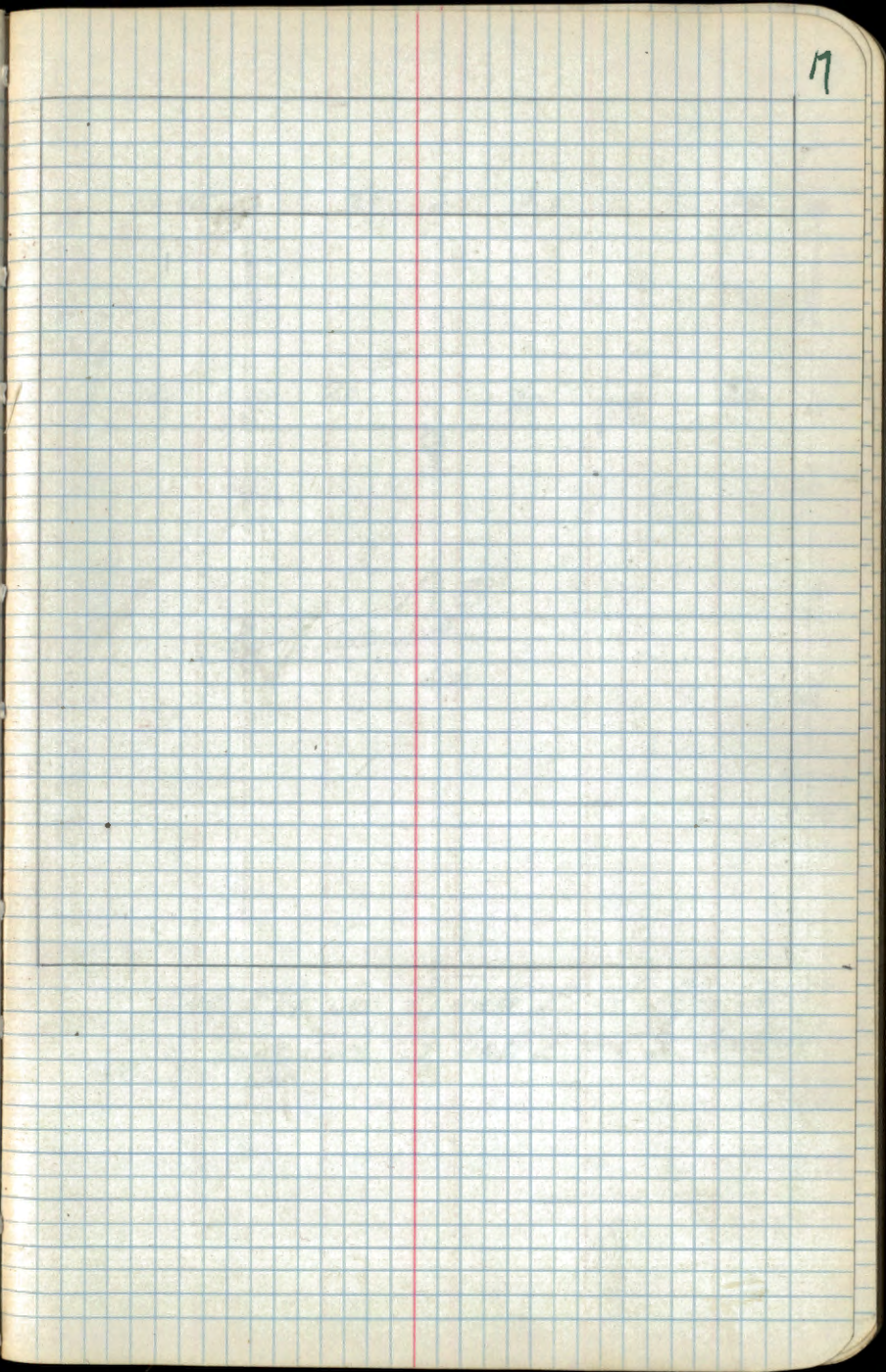
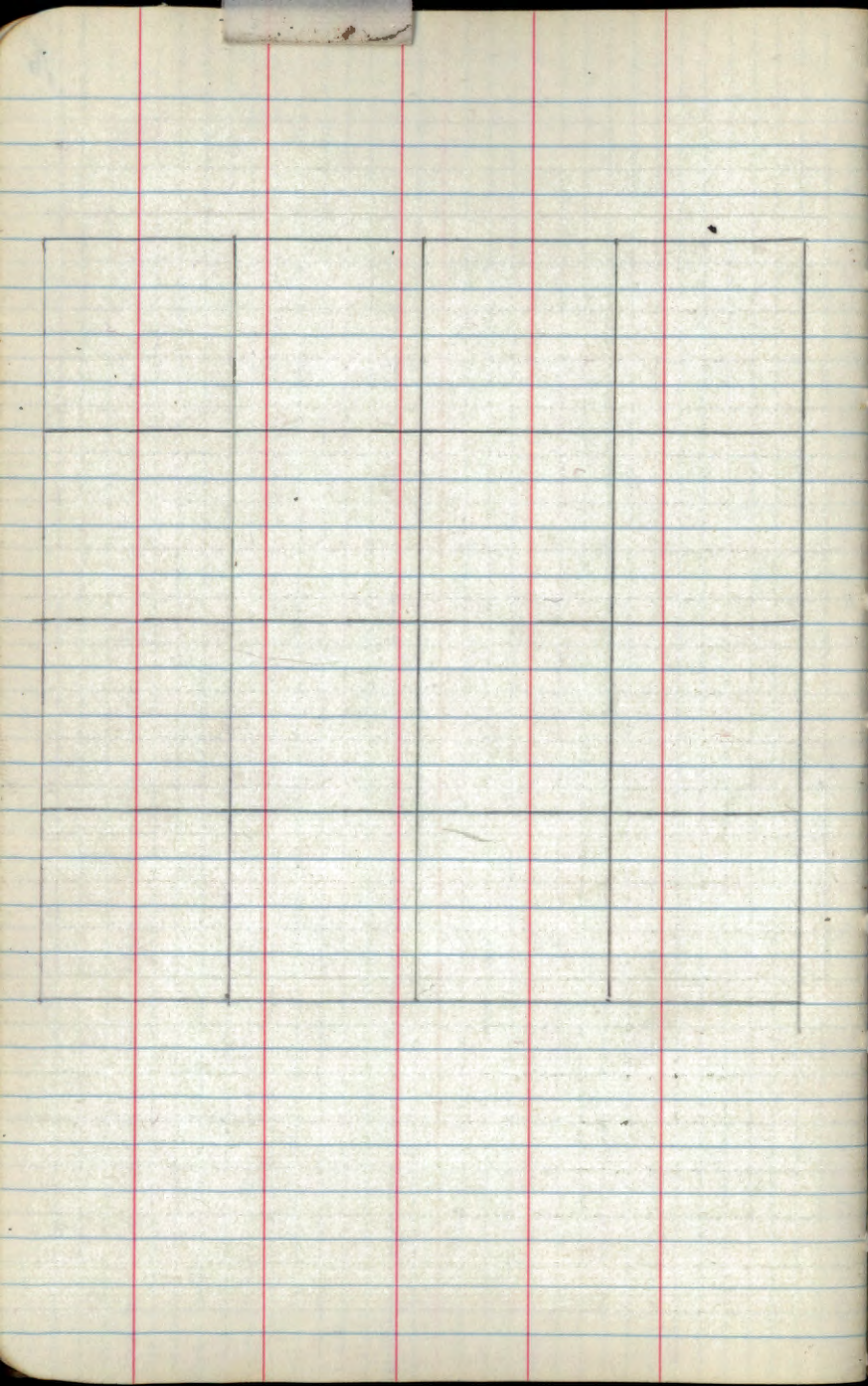


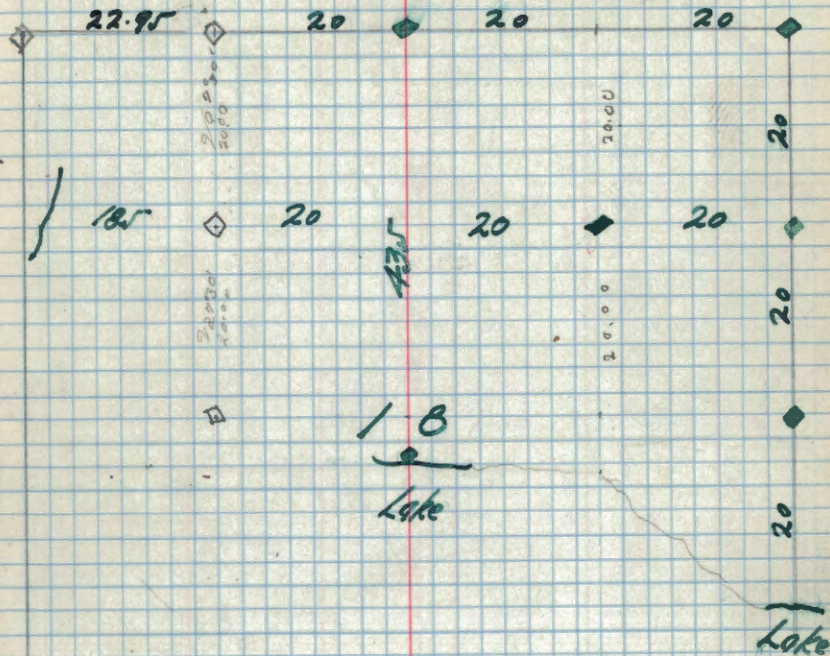
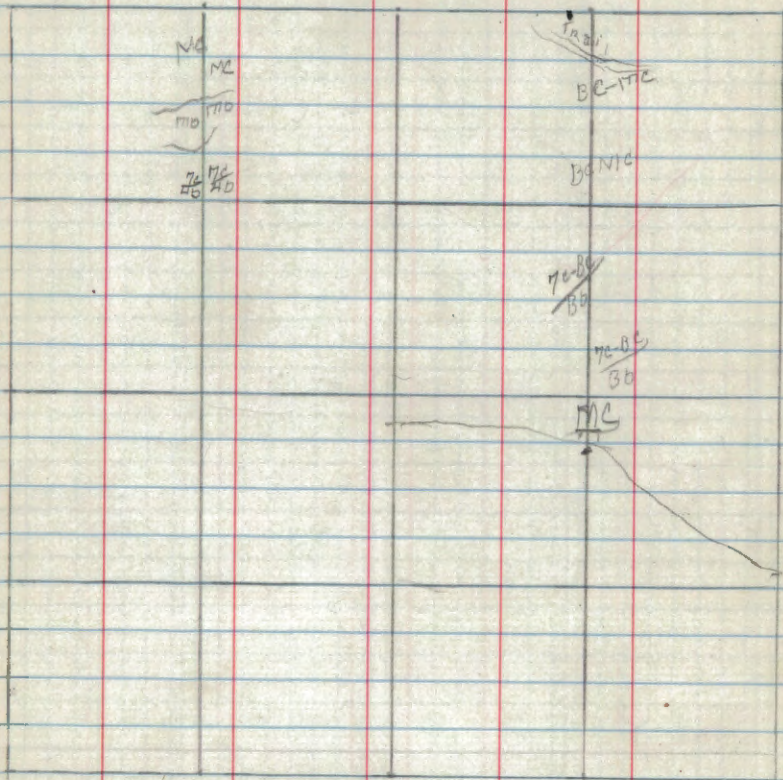
20

15



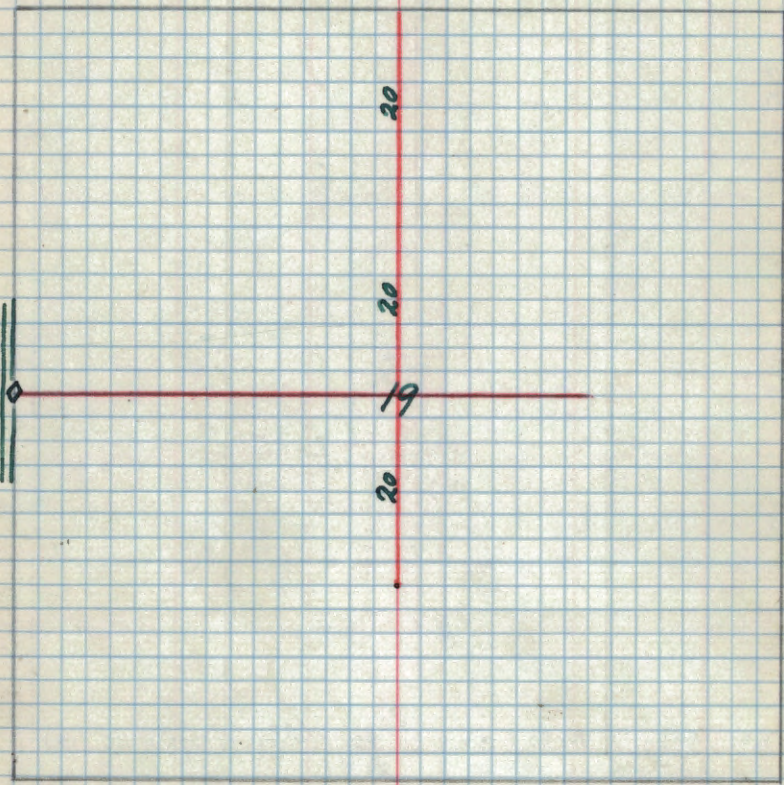
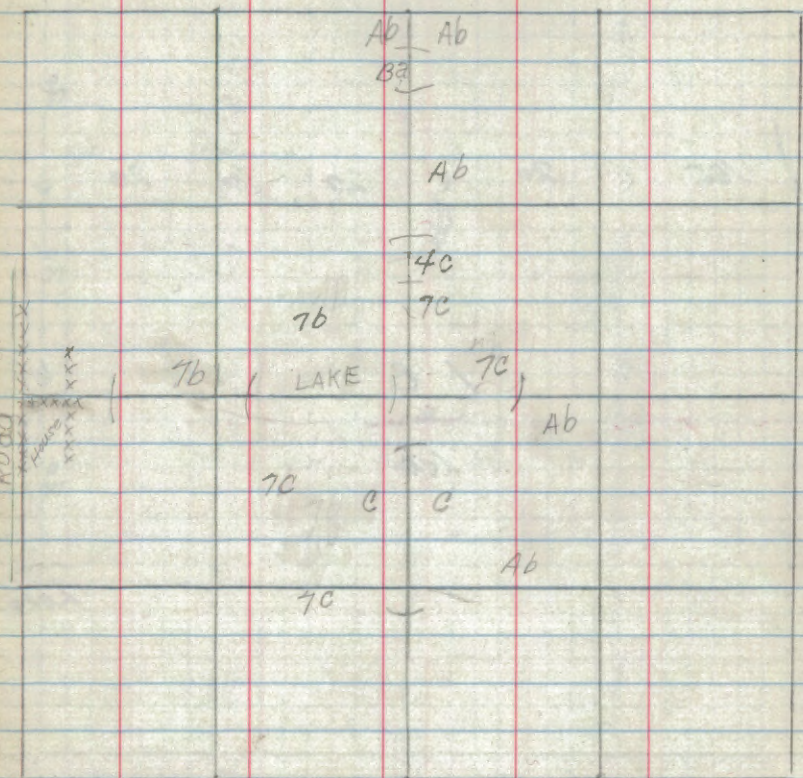
16

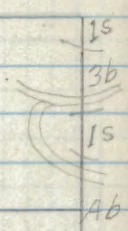
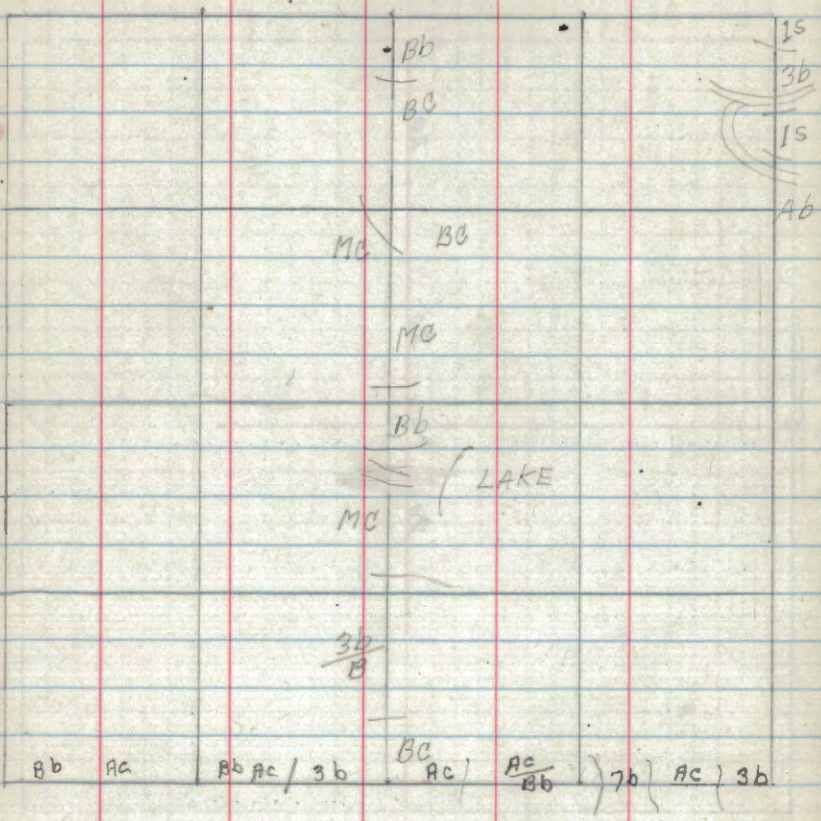




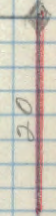
Old E 1/4 Cor. 57 links E. of App. Cor.  
 76 G.O. Cor. 20 links E. and 35 links N.  
 of App. Cor.







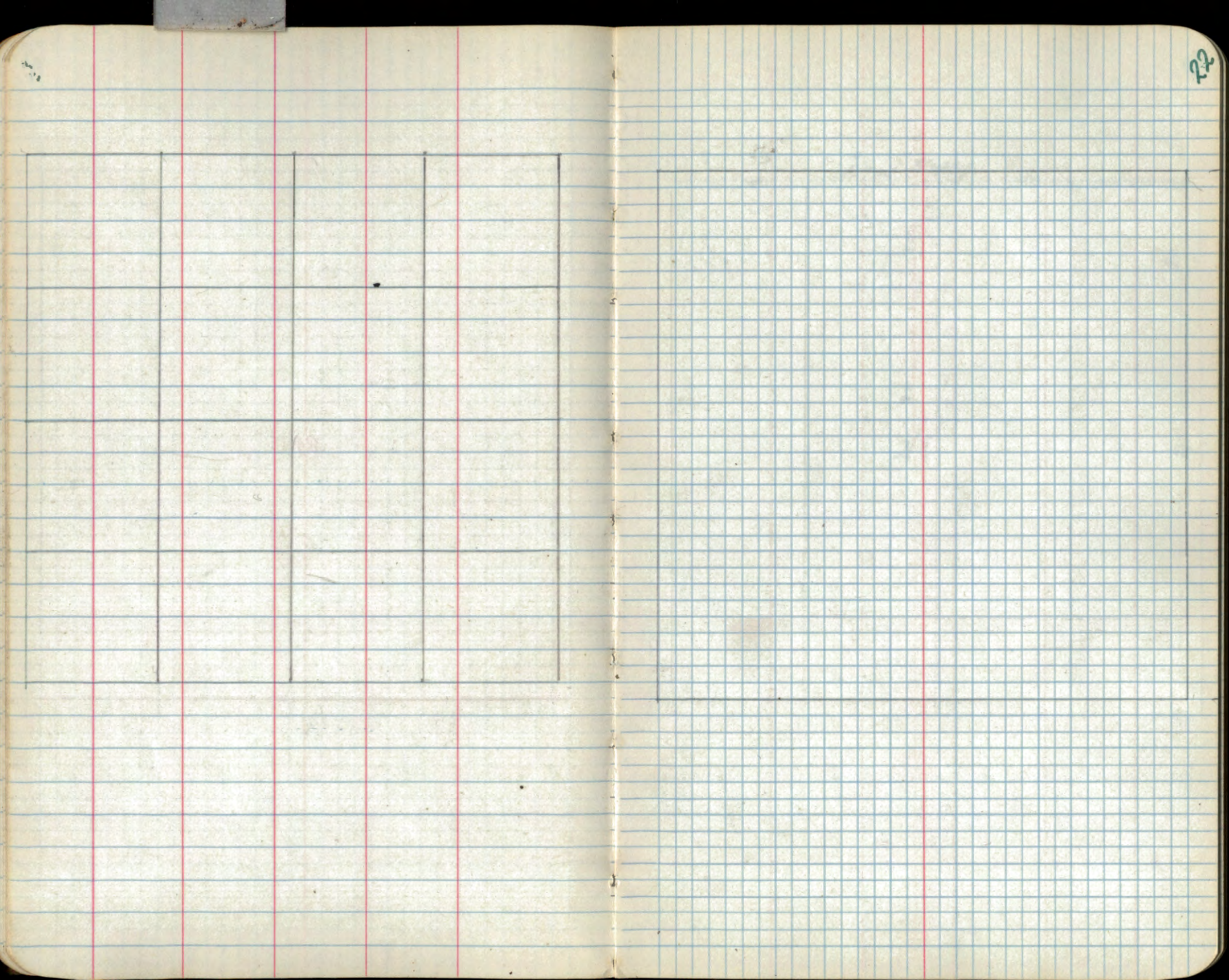
20



← Error 4.22 chr. W  
 "53" S.

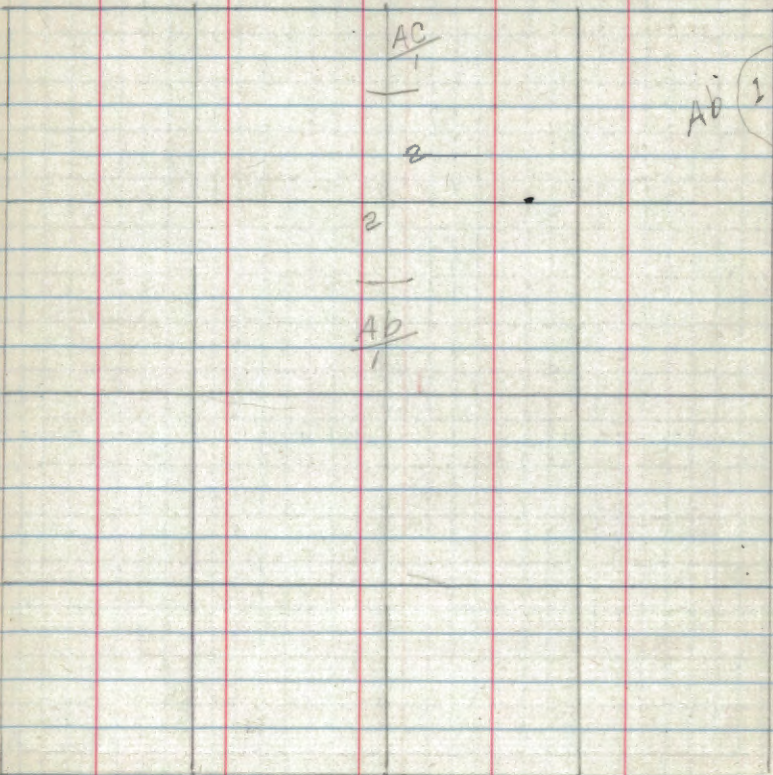
21

3b	)	Ac	)	2b	)	Ac	)	3b
----	---	----	---	----	---	----	---	----

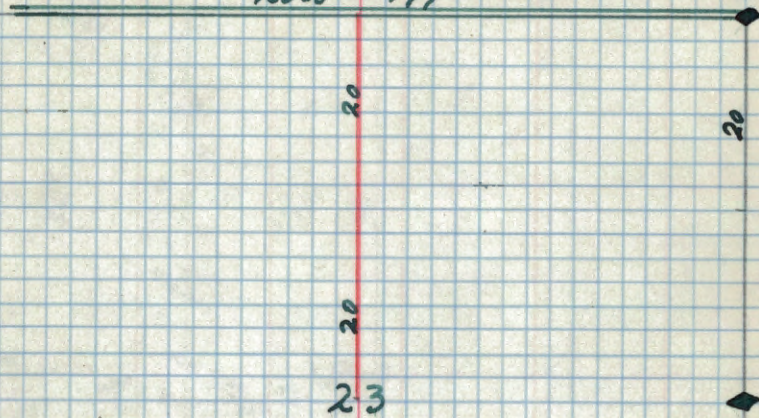


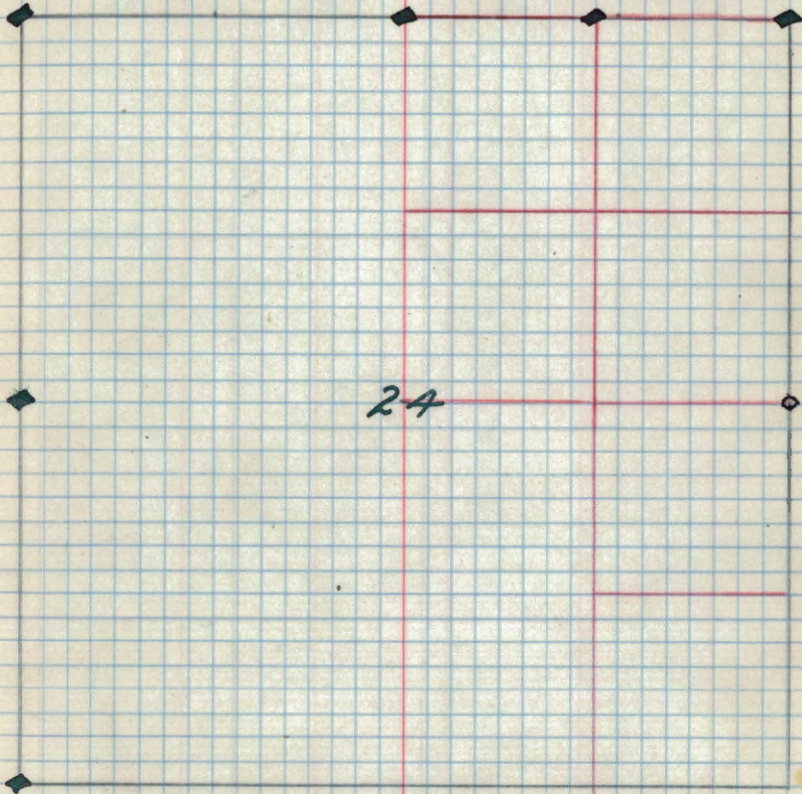
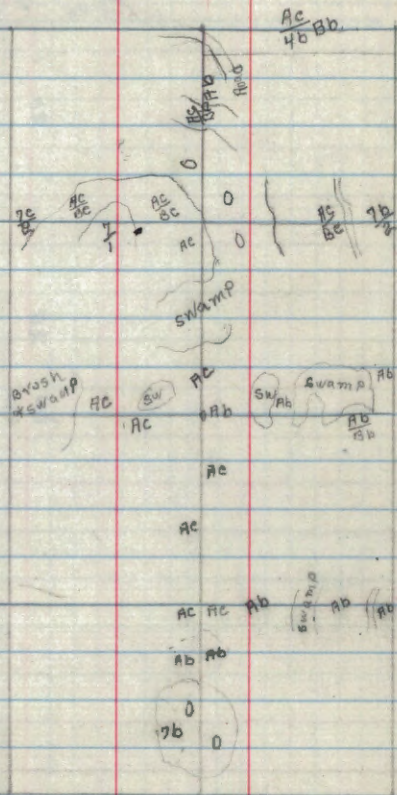
22

Road



Road #499





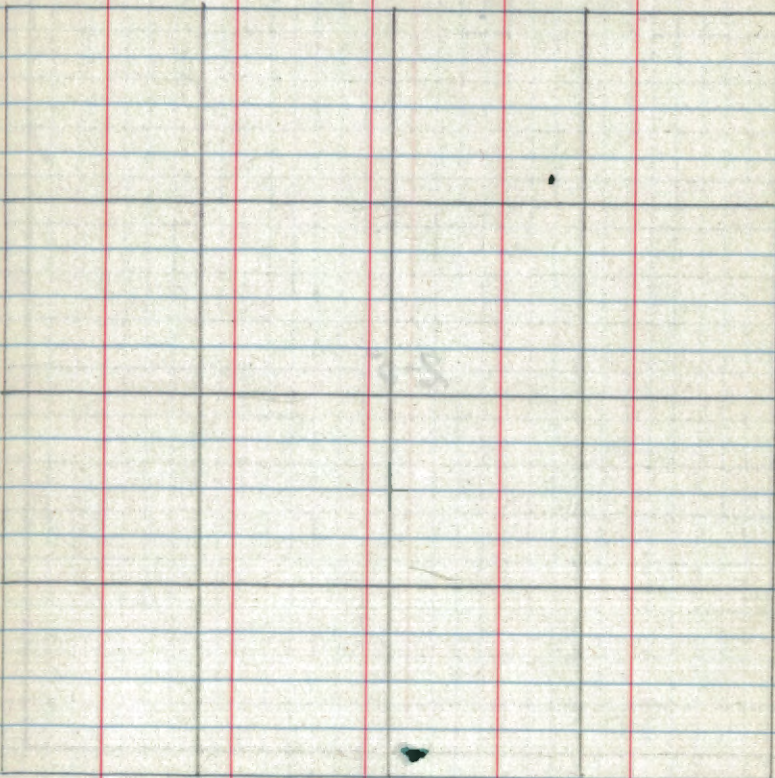
20

20

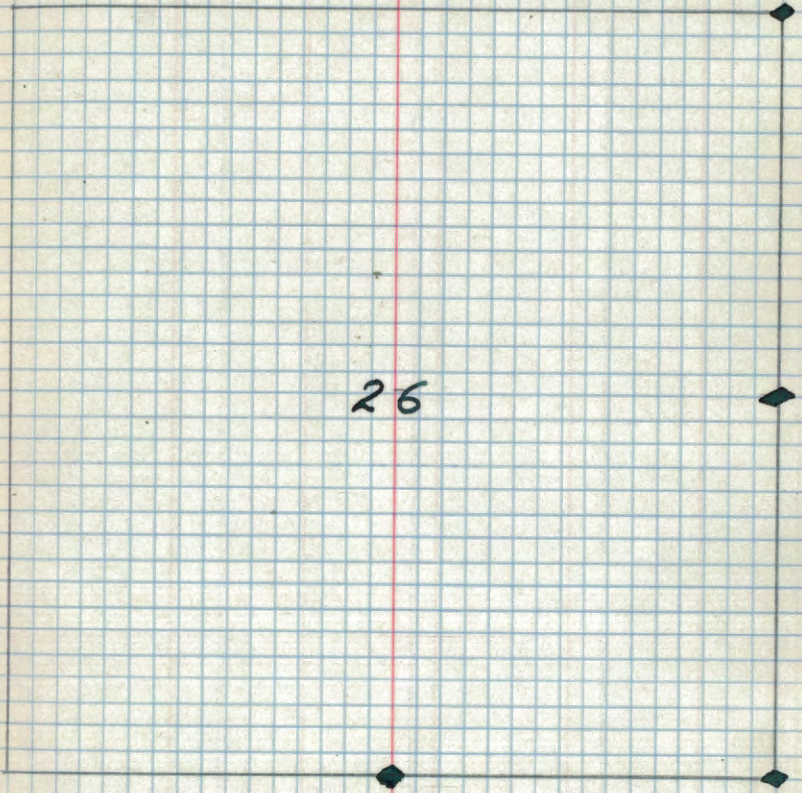
20

20

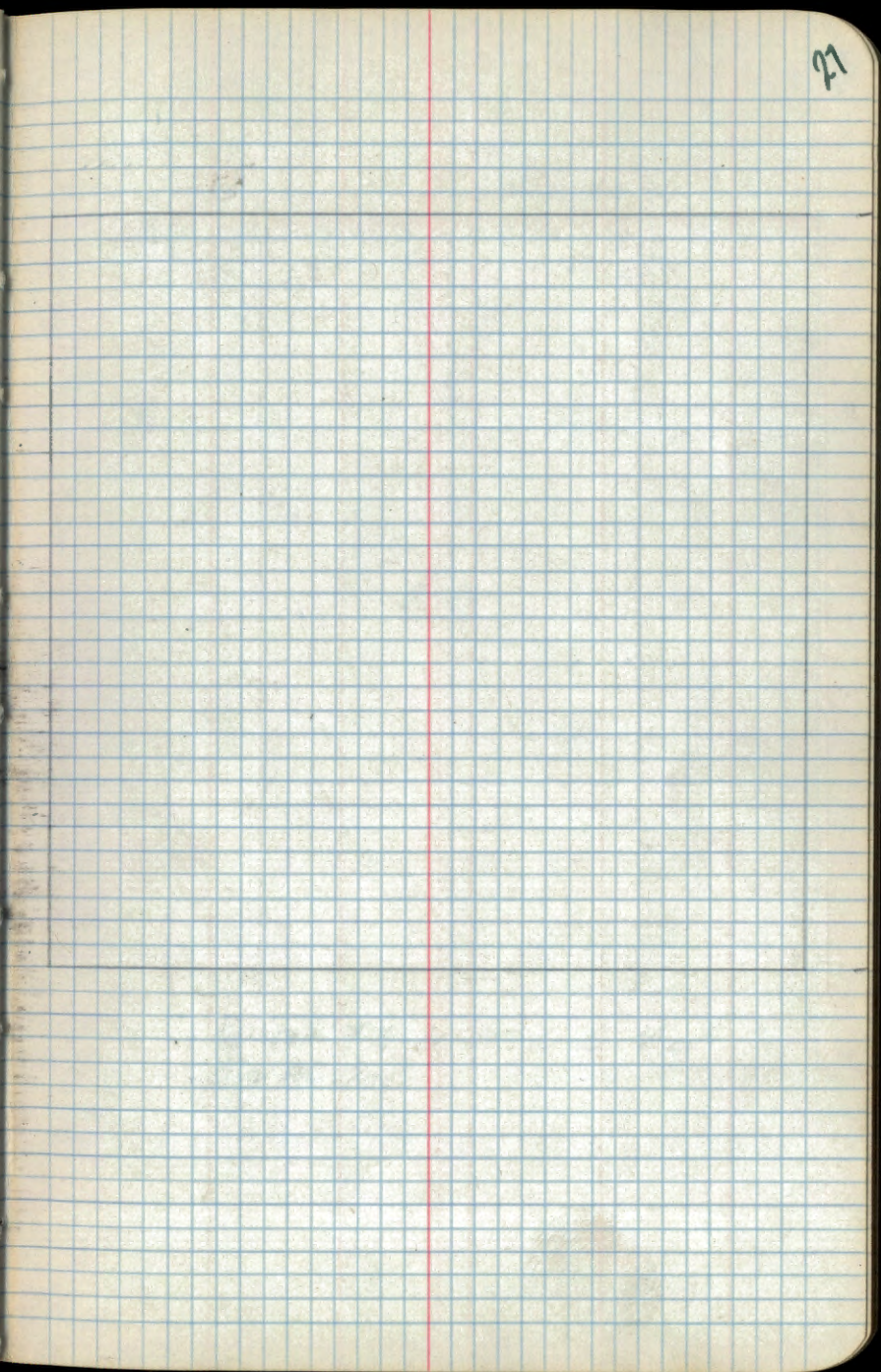
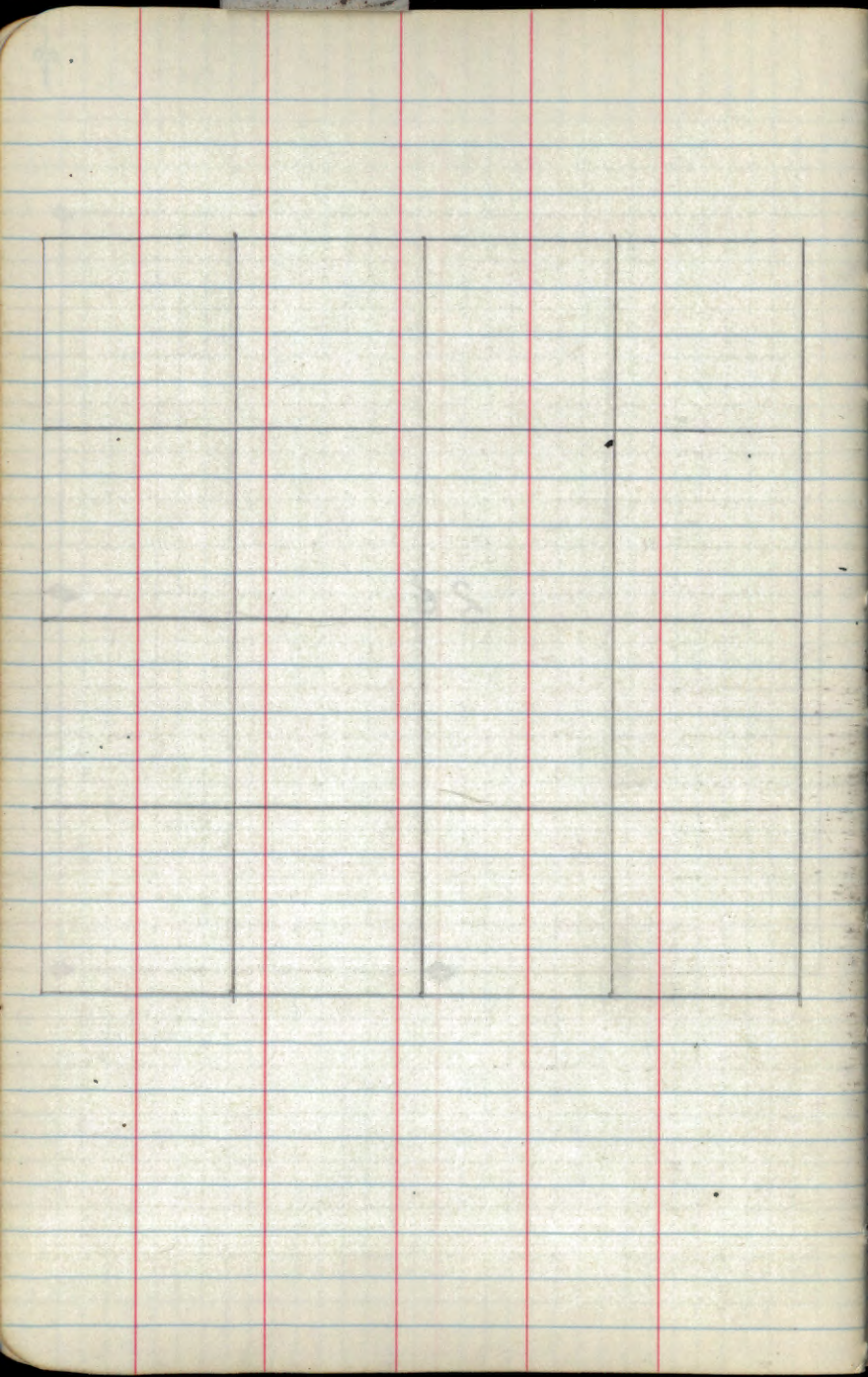
25

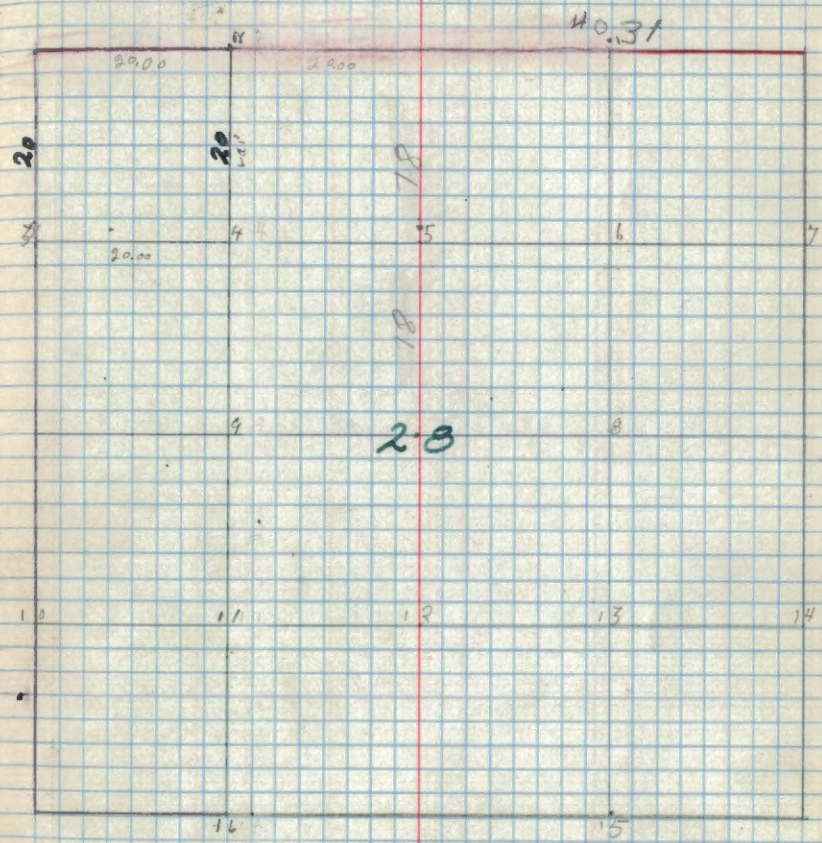
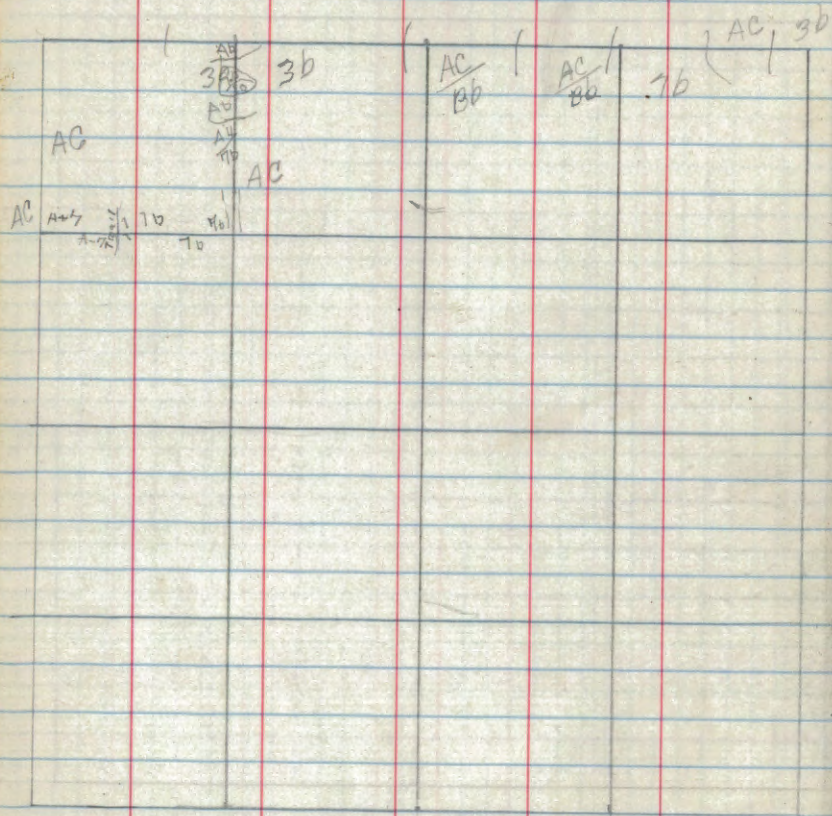


26









No cor. #2 is 55 links N. of  
E. & W. line.

Bb AC

Bb AC 7b AC

AC 7b

AC  
3b

7b

AC  
Bb

AC  
Bb

AC  
7b

AC  
7b

AC  
3b

7b

webster  
lake

AC  
Bb

AC  
Bb

20

20.31

40.31

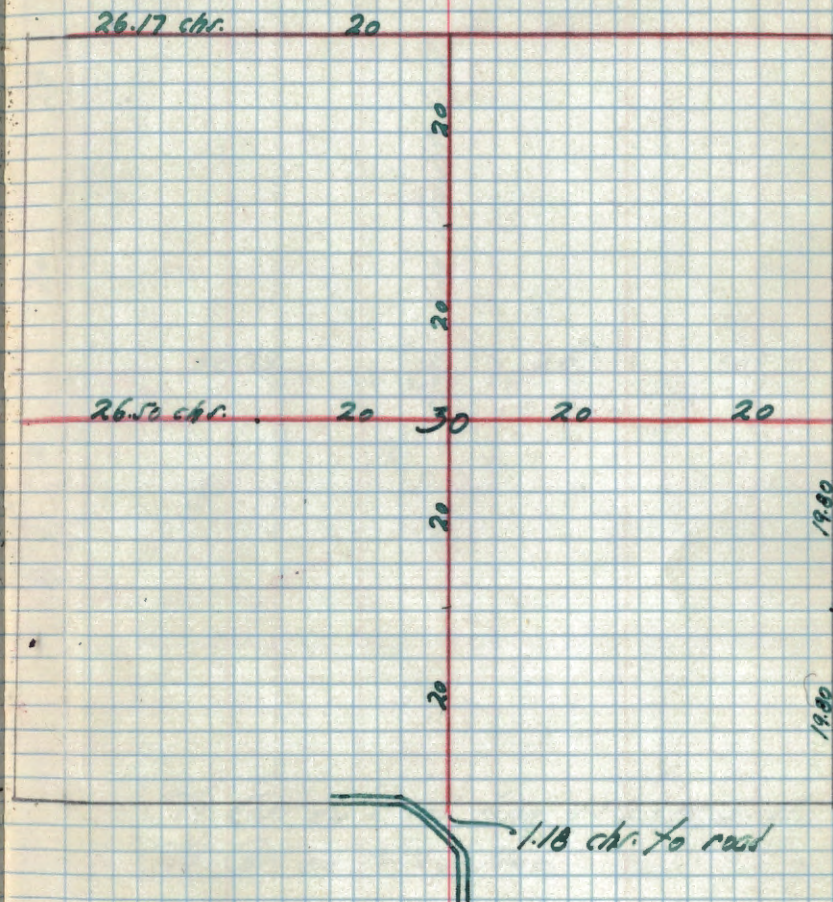
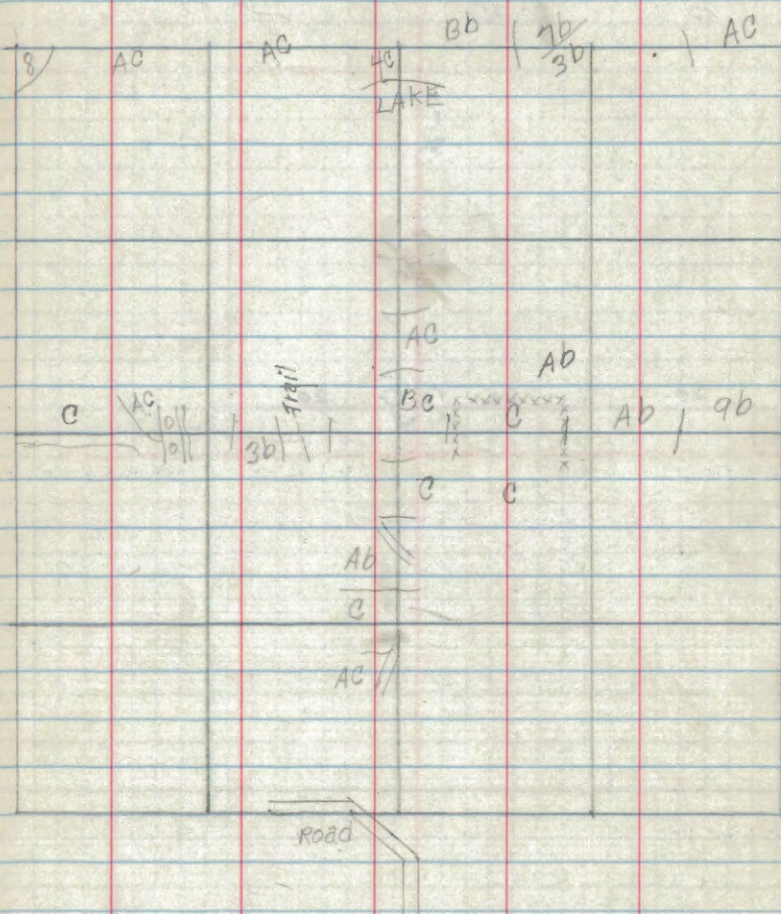
19.5

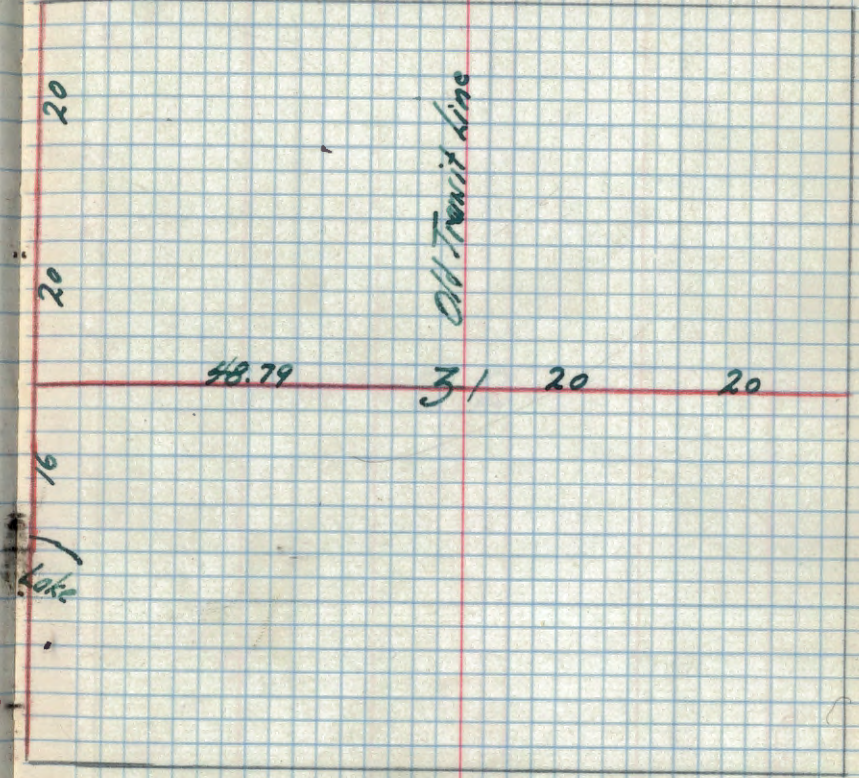
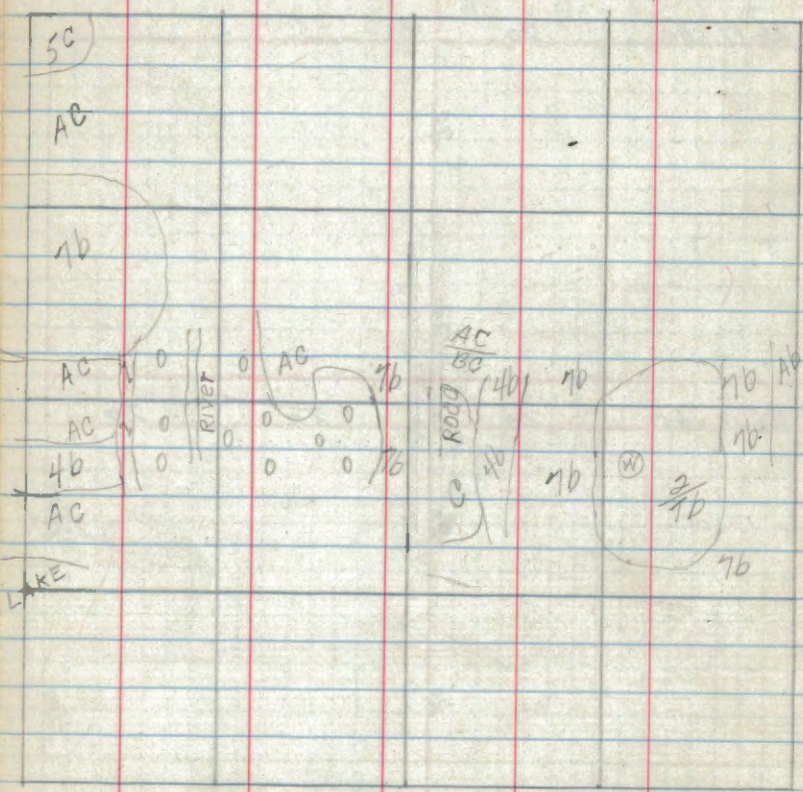
20

20

29

20

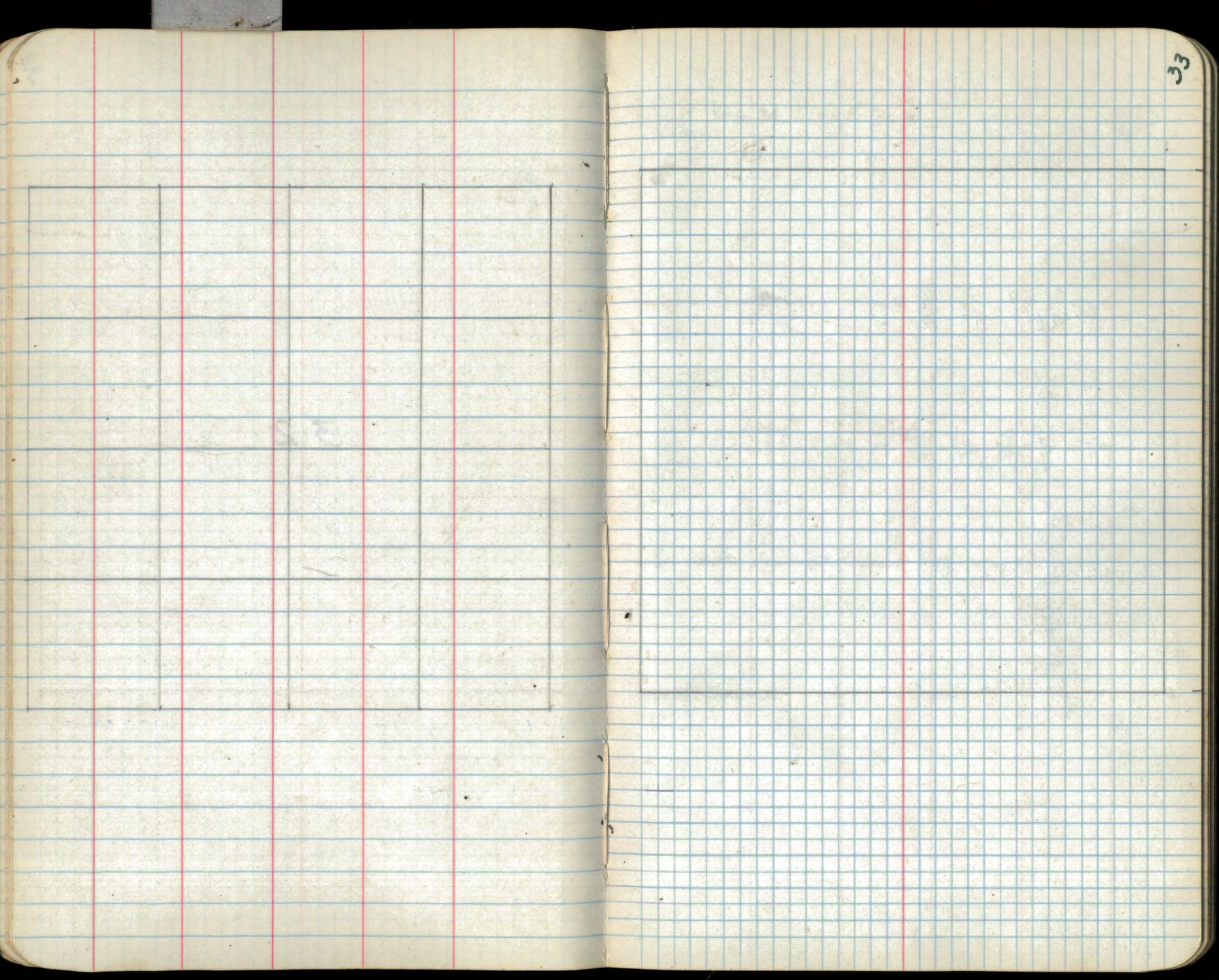




NE Cor. on E & W line 1.52 chs. S. of  
 NE Cor. on N. & S. line.

E 1/4 Cor. 53 links N and 2 chs. W. of  
 1/4 Cor. est. by Big Lake Camp.

32



$\frac{AC}{BC}$     $\frac{AC}{BC}$     $\frac{3b}{3b}$     $\frac{3b}{3b}$     $\frac{3b}{3b}$     $\frac{3b}{3b}$

$\frac{AC}{BD}$

$\frac{7c}{7c}$     $\frac{8c}{8c}$     $\frac{4b}{4b}$     $\frac{8b}{8b}$     $\frac{8b}{8b}$

$\frac{BB}{BB}$

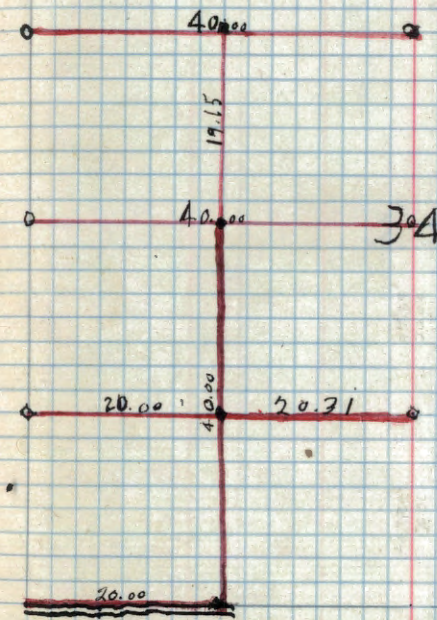
$7b, 4b, BB, 5b, 8b, 3b, BB$

$\frac{BB}{BB}$

washing

21/22   Sec. 34 T148 R. 30 W.  
 33/34

21/23  
 34/35



$\frac{33}{2}$     $\frac{34}{3}$

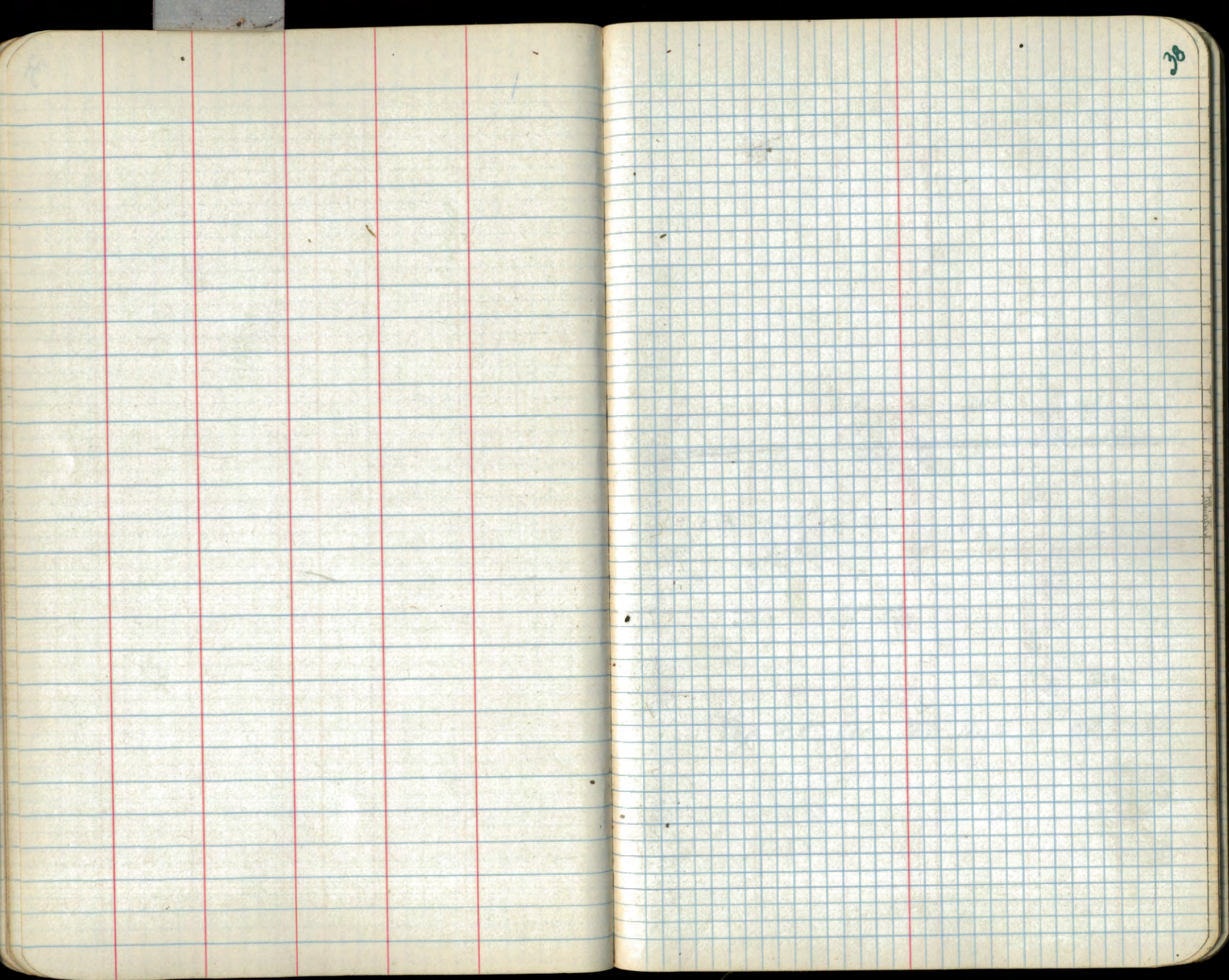
$\frac{34}{2}$     $\frac{35}{2}$

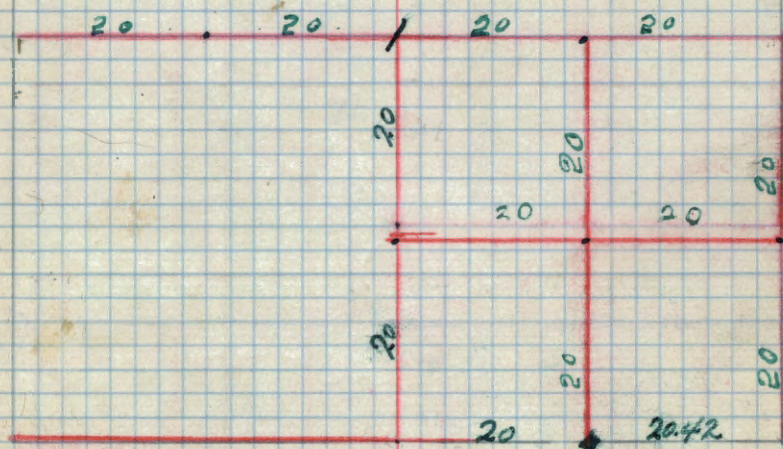
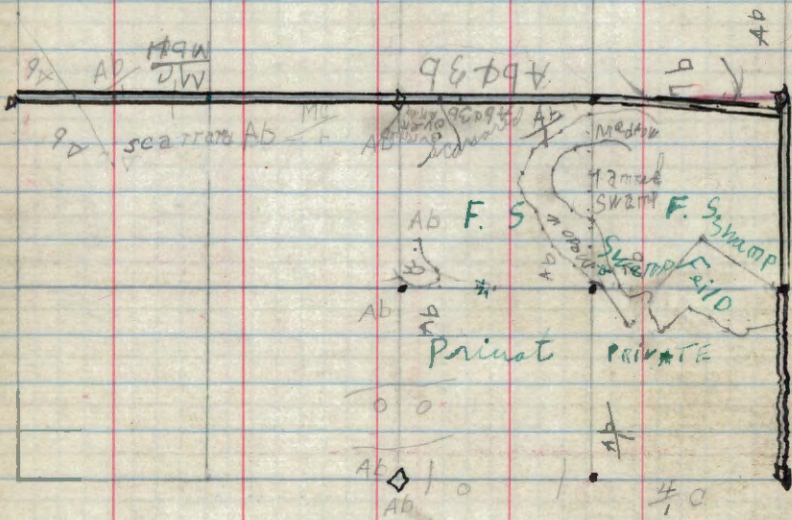


35









App. #15 Cor. 29 links S. of G.H.O.

A-3  
3-1  
B-3  
A-1

A-1

A-1  
~~XXX~~  
A-3

3-1B

3-1

1-2

1-A

1-A

7-1B

N

S

E

T.1.A8-R-31

Root

Bowman  
Dahlin

351360  
RTW

3A  
3/5

veg  
20.00

veg  
20.00

3/2  
veg  
20.00

veg  
20.00

3/2  
veg  
20.00

2/1

2/1  
TTT

T.148-R31

Bowman  
Dahl

3135

20.00

20.00  
20.00  
20.00

BA

va8<sup>30'</sup>  
19.18

va8<sup>30'</sup>  
19.18

va1<sup>6'</sup>  
16.40

va8<sup>30'</sup>  
20.00

va8<sup>30'</sup>  
20.00

va8<sup>30'</sup>  
20.00

va8<sup>30'</sup>  
20.00

va8<sup>30'</sup>  
19.50

va1<sup>0'</sup>  
20.45

va8<sup>30'</sup>  
20.00

va8<sup>30'</sup>  
20.00

va8<sup>0'</sup>  
20.00

va1<sup>0'</sup>  
20.45

va8<sup>0'</sup>  
20.00

va7<sup>0'</sup>  
20.00

va1<sup>0'</sup>  
20.74

va7<sup>0'</sup>  
19.65

va7<sup>0'</sup>  
10.10

33 34  
7.7

N/A 0 0 0 B-A3 B-b 0-3

AB  
Field  
brush  
A-1  
A-1  
A-1

Brush 7b 7b 7b  
Brush  
brush  
A-1  
A-1

AB  
A-B  
3-A

3-B  
Field  
Brush  
A-B  
SWAMP

W

4/3

4/3  
9/10

va7<sup>0'</sup>  
20.00

va7<sup>0'</sup>  
20.00

3/10

Z

#B-D-A-3 3-7 B-A 7X0  
#B-R-F-A-B A-3 3-M 7X0

A-3 | 0 7X3 7X3 B-3 A-3 A-3  
A-3 7X 7X A-3 101 010 A-3 9X

Road

A-1-M

E 5/4

B-A-1

B-1

A-B-1

54

T. 148 R 31

BOWMAN  
Dahlia

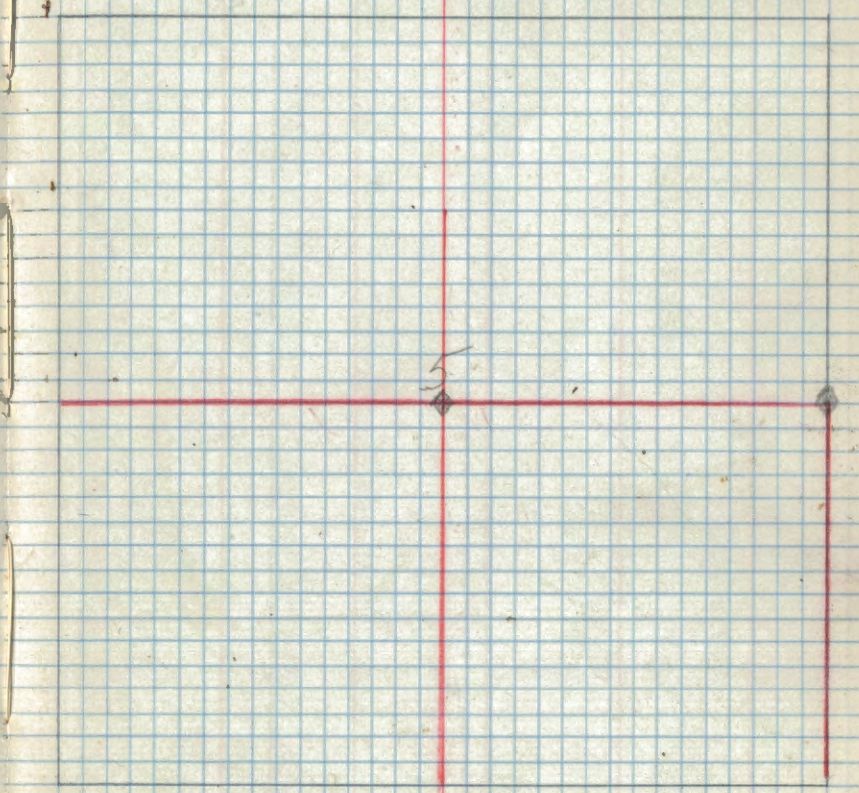
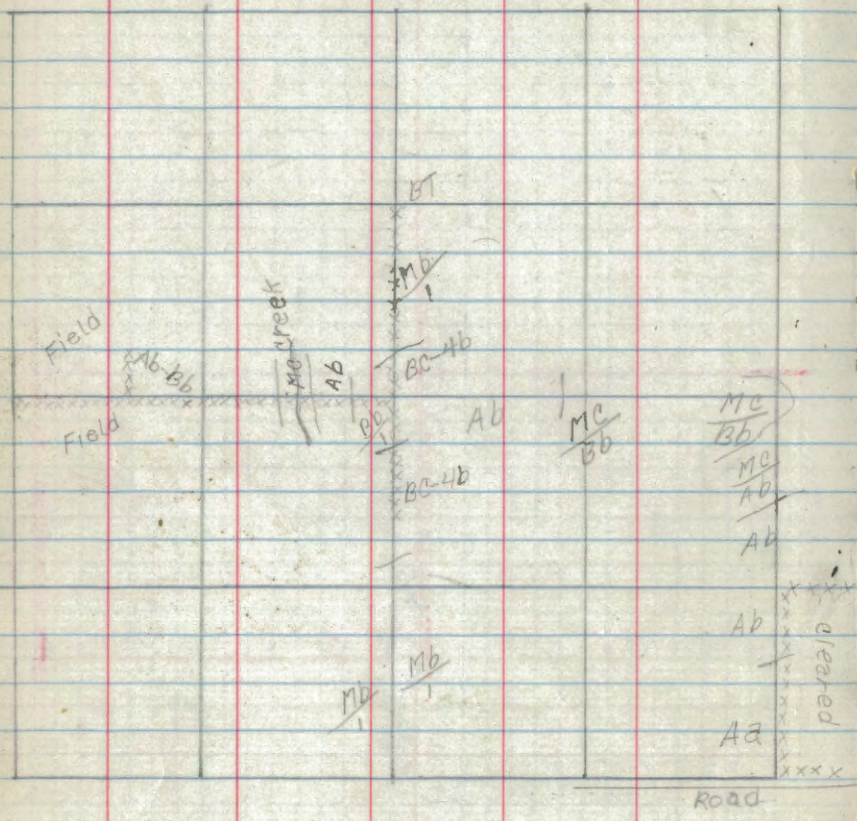
A/3 RP

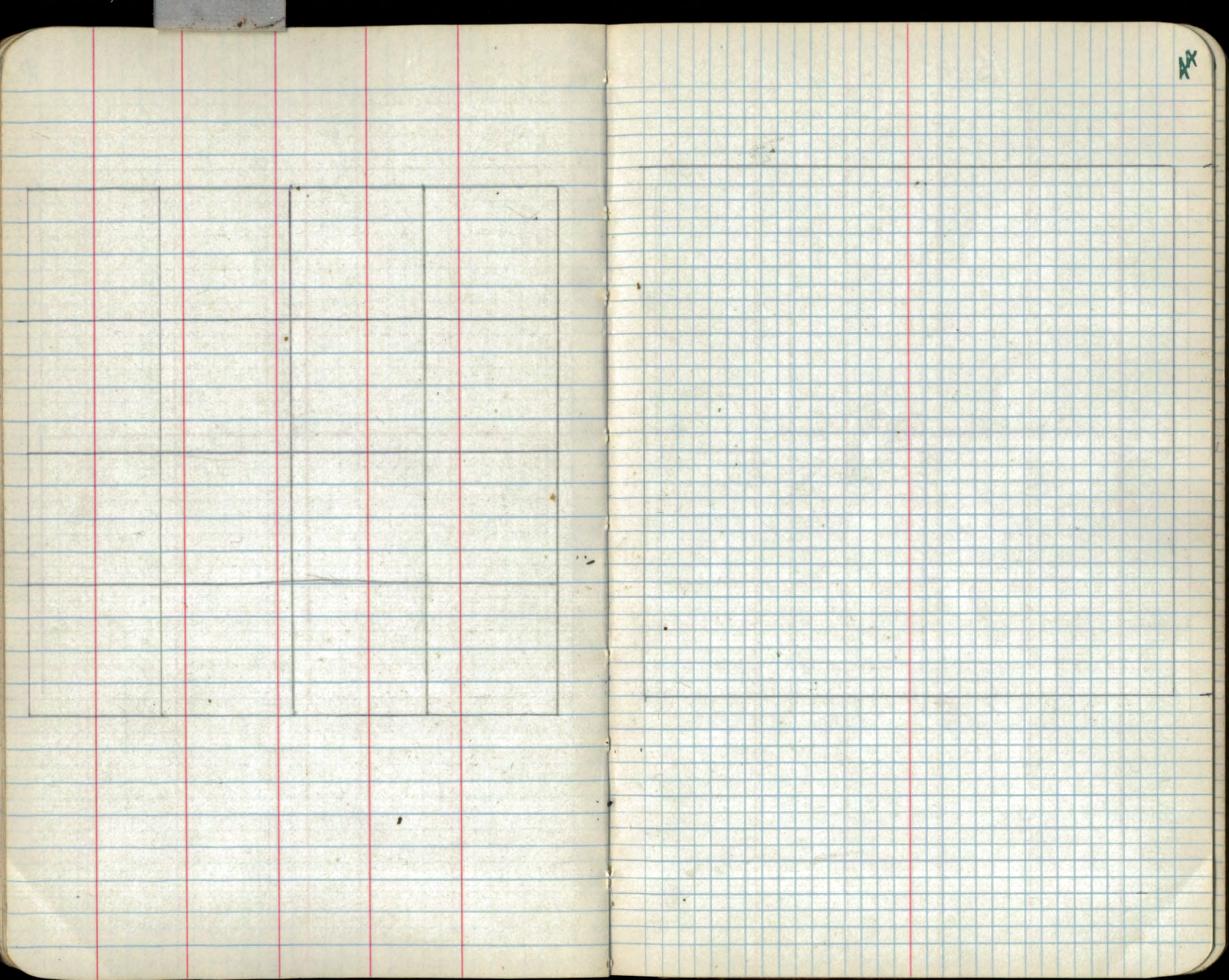
A/B

A/3

A  
1/9

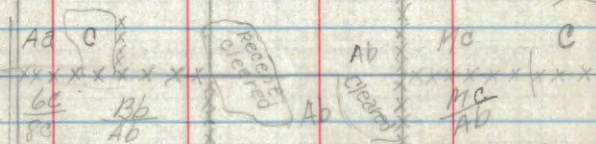




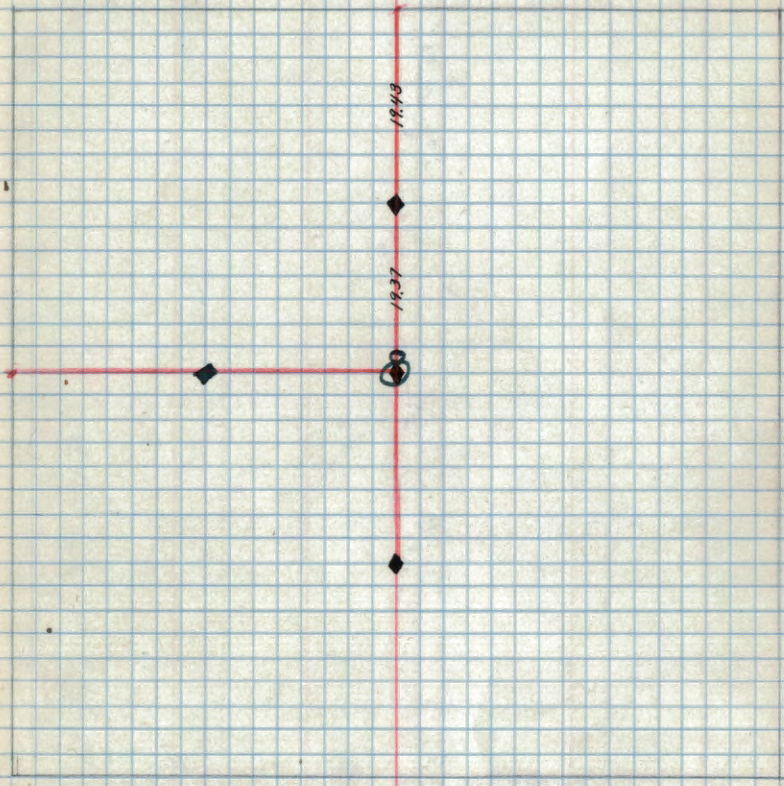
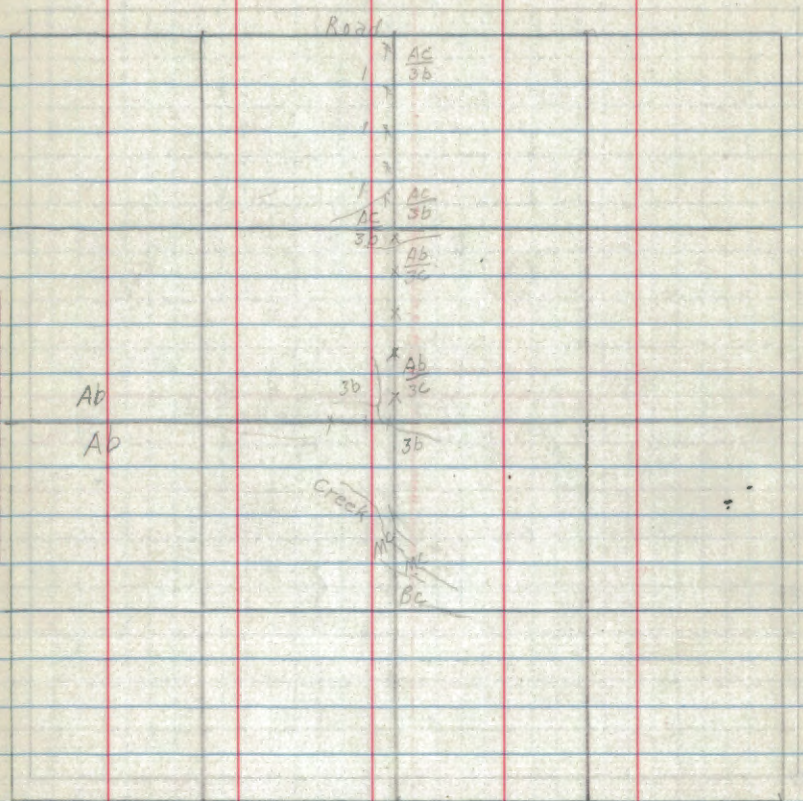


14

Sec. 7



8



9

38 ch

1-A  
D-A-1  
3-A-1

E-A  
B  
D  
B

76  
44b  
Aren

12A

B-1  
A-1

1-A-1  
B-2  
X  
A-1  
A-1

A-b  
B-D  
B-D

1-  
A-1  
A-1

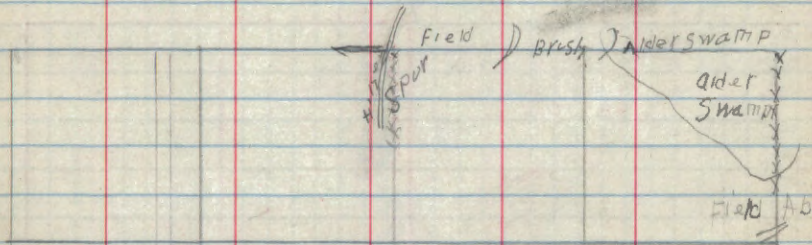
B-1  
A-1

3b

3b

3b

Burned Over  
Mushy



A-3 R-B M-B A-B R-B R-B 4-7-1-B A-B B-1 A-B B-1  
 M-B A-B A-B A-B A-B A-B

Road

A-B  
 3-A  
 3-A  
 R-3 A-3

Tb

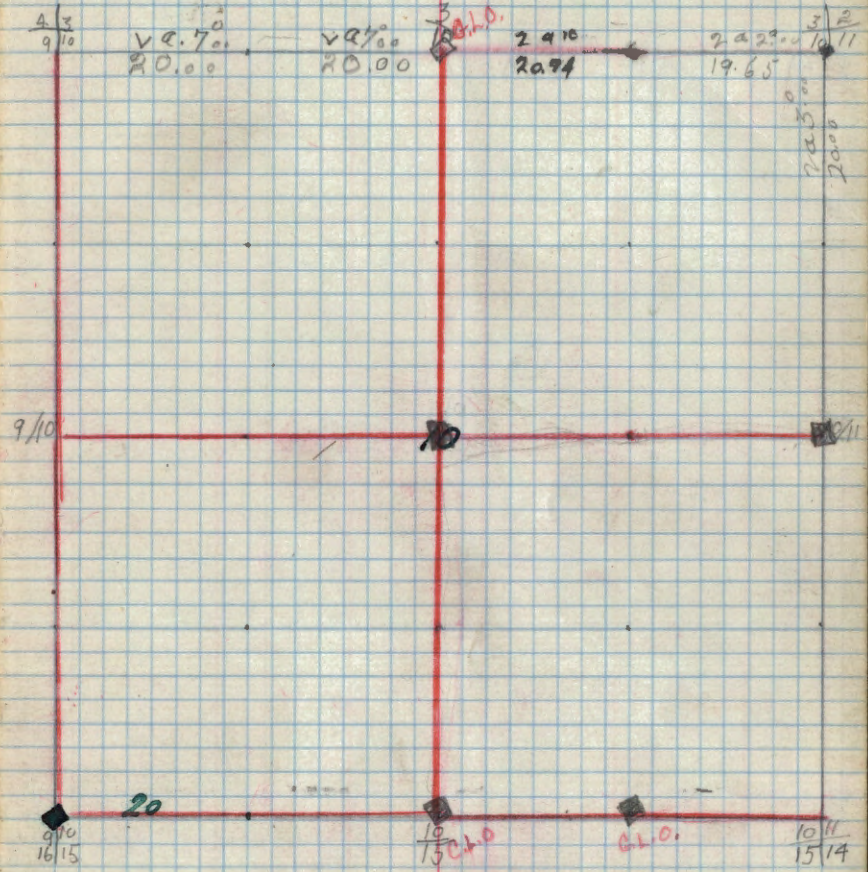
Tb

7b+4b

7b+4b

Bowman  
 T. 148-R3, D.H. 17

48



T. 148-R. 31

BOWMAN

MS

$\frac{3}{10} \frac{2}{11}$   
 AB  
 AB  
 AB  
 AB

$\frac{3}{10} \frac{2}{11}$

7 a 700's  
20.00

7 700's  
20.00

$\frac{2}{11}$

$\frac{2}{11} \frac{1}{12}$

24.50  
26.00

10/11

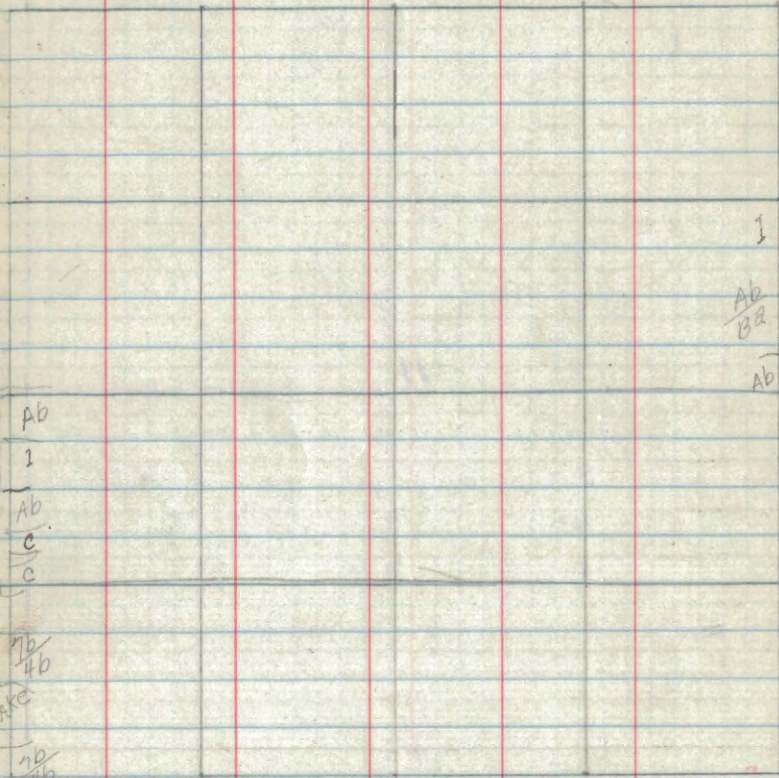
11

11/12

$\frac{10}{11} \frac{1}{15}$

$\frac{11}{15}$

11/12  
15/14



1  
 $\frac{Ab}{B2}$   
 Ab

Ab

1

Ab

c

c

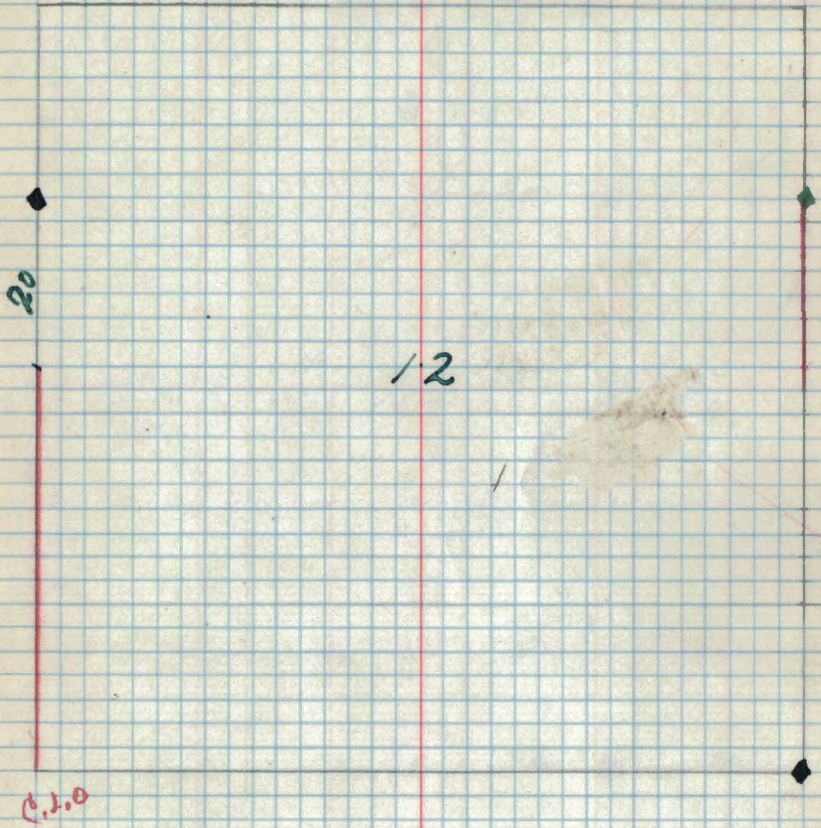
Ab

4b

LIVE

Ab

4b

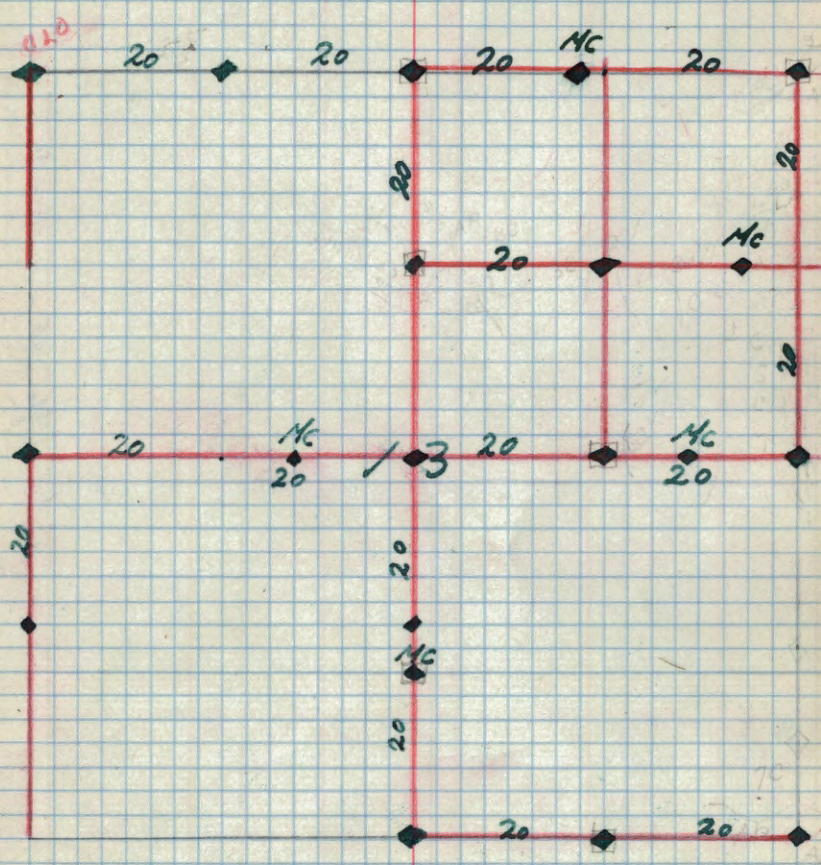
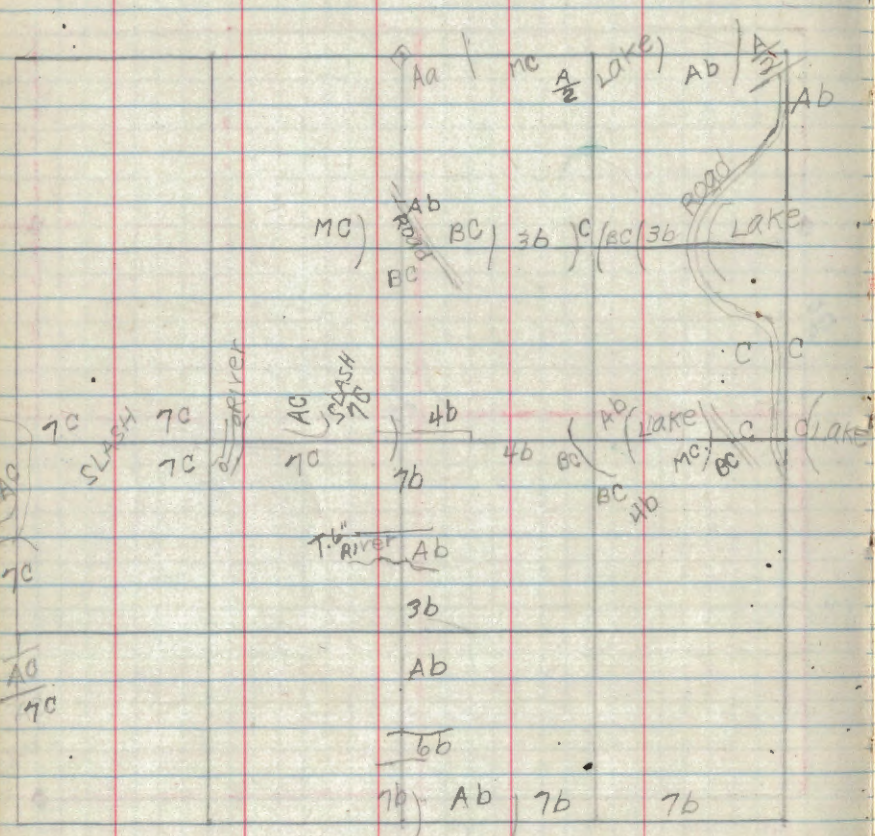


20

12

0.1.0





Q.T.D.

20

14

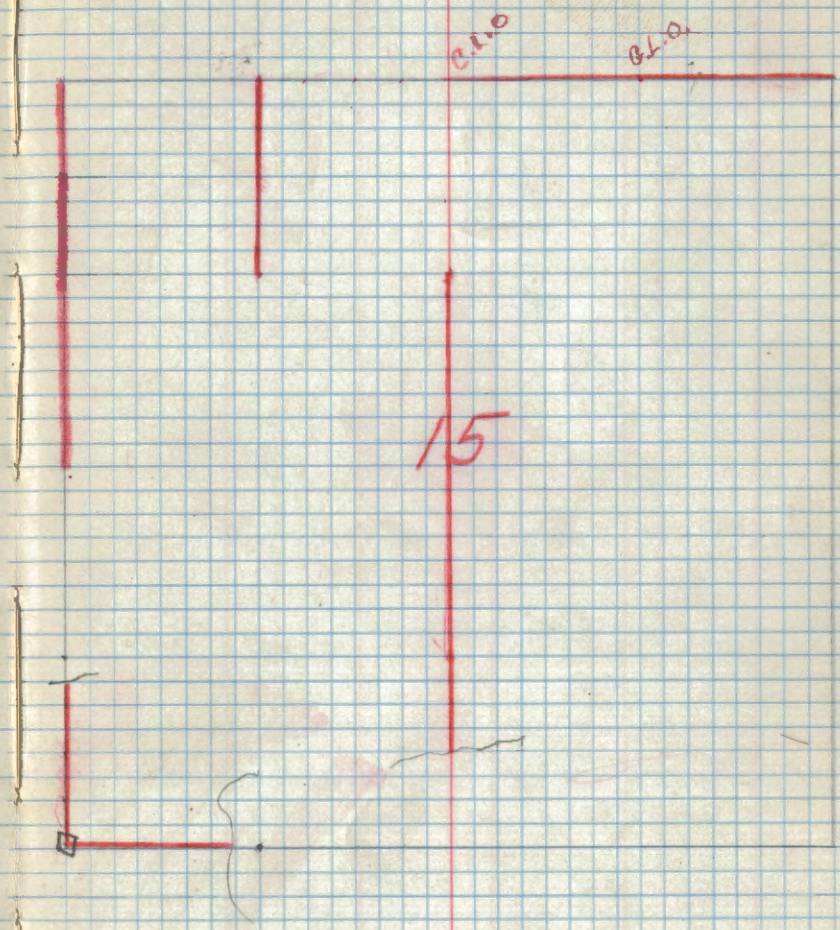
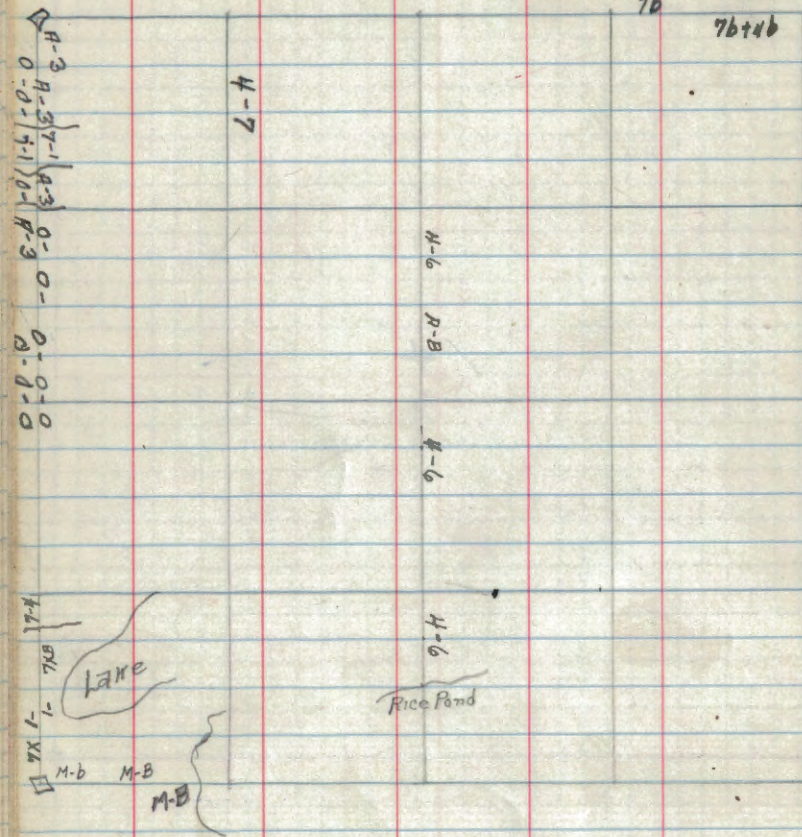
76+46

46

76

70

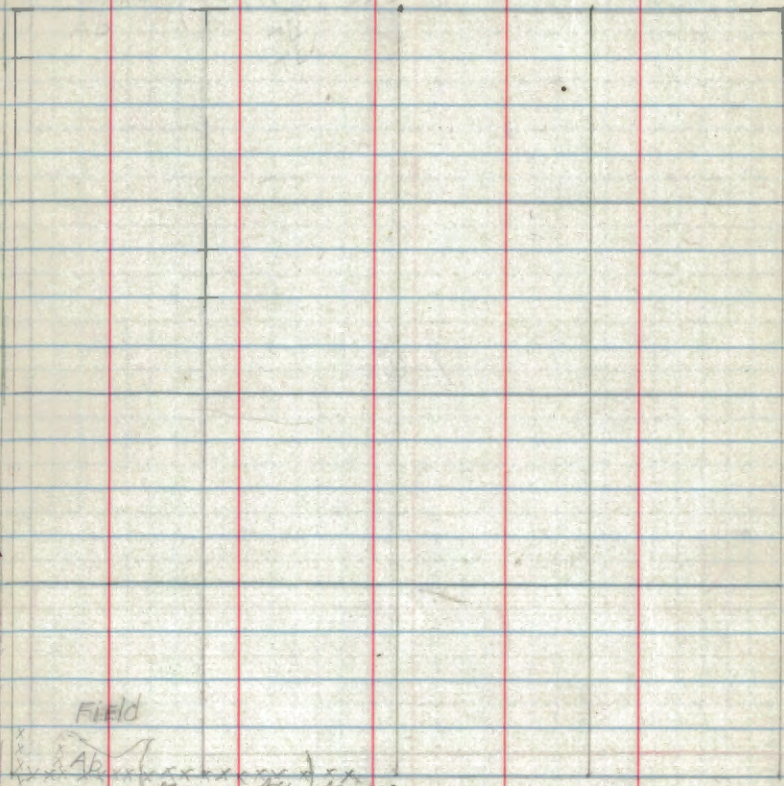
Ab



16

17X 1- 174  
17X 1- 174  
17X 1- 174  
17X 1- 174

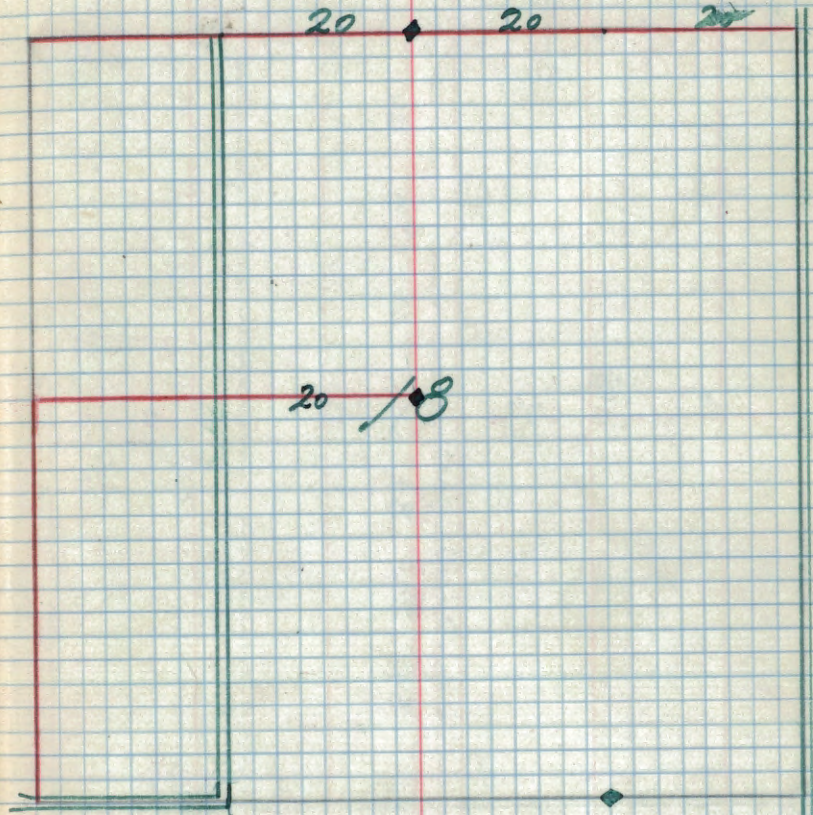
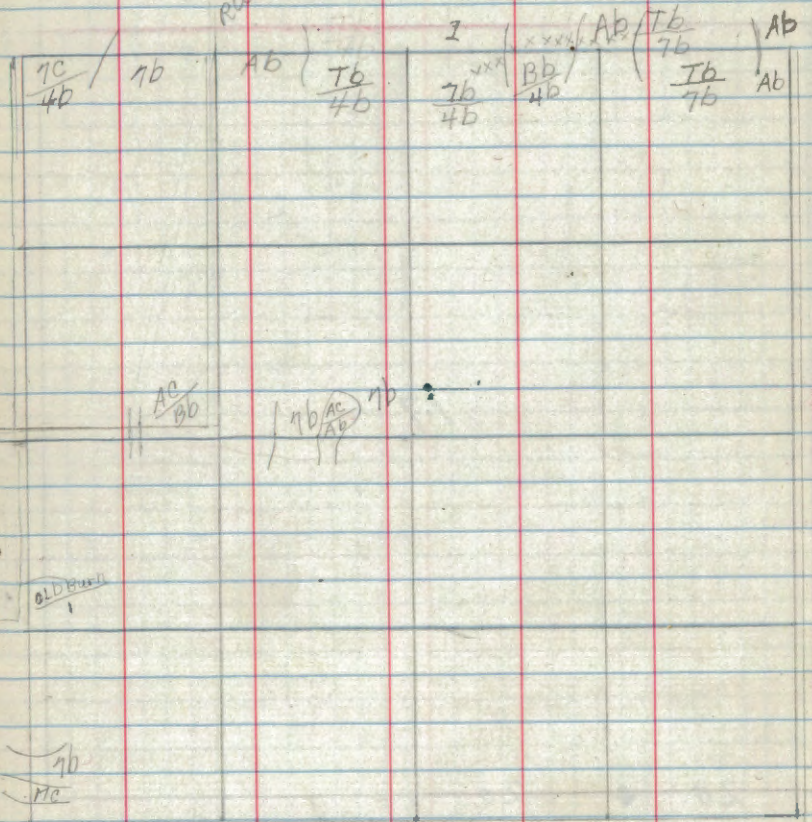
17X 1- 174



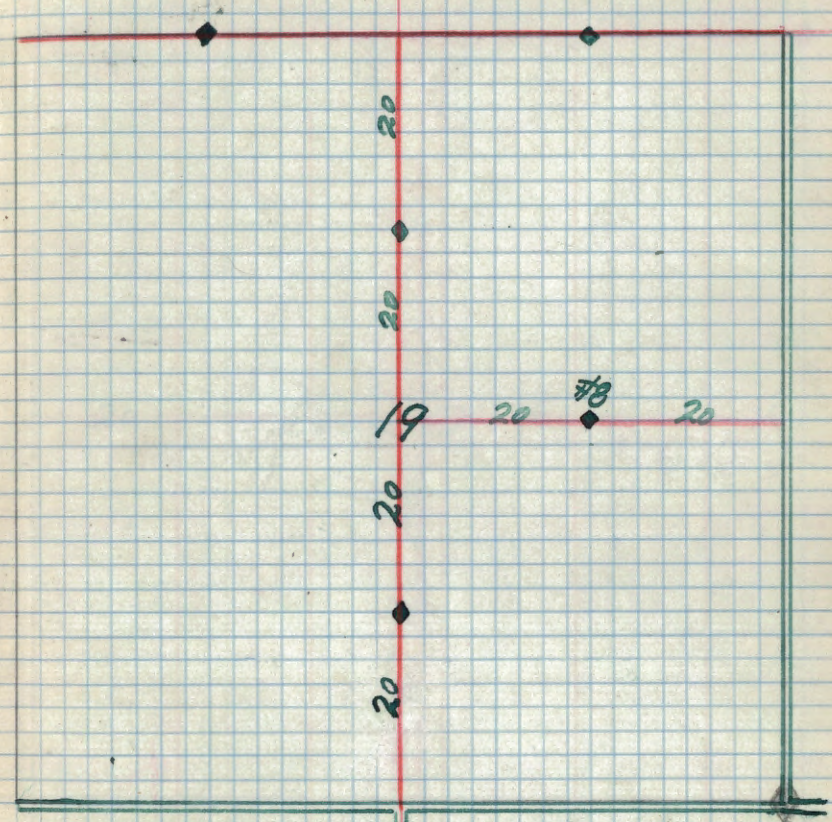
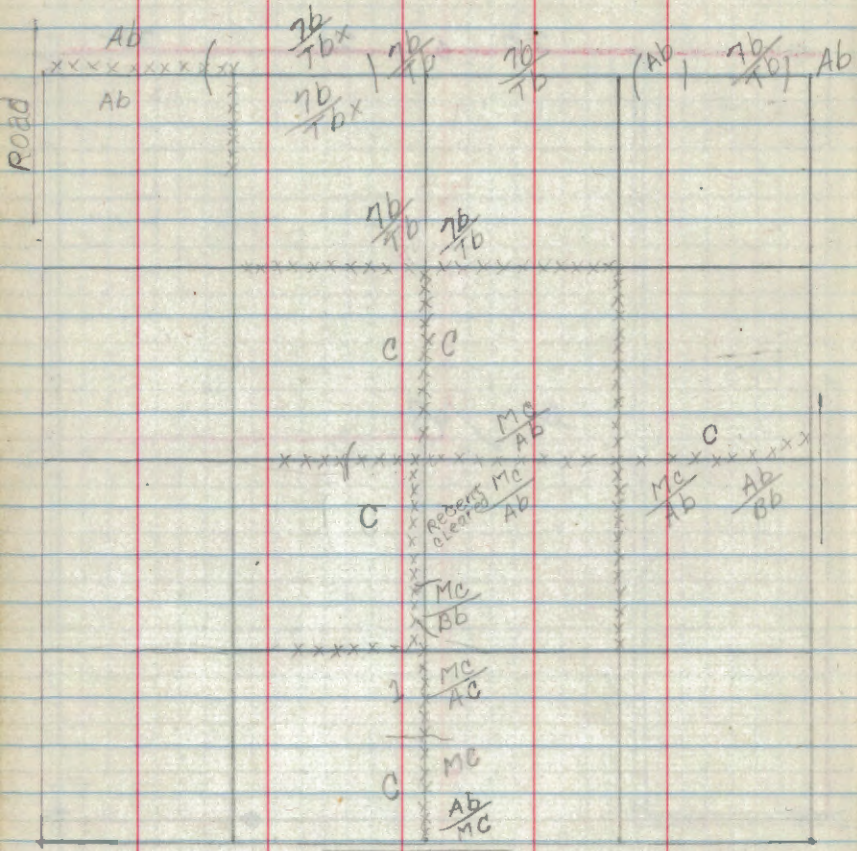
17



Road

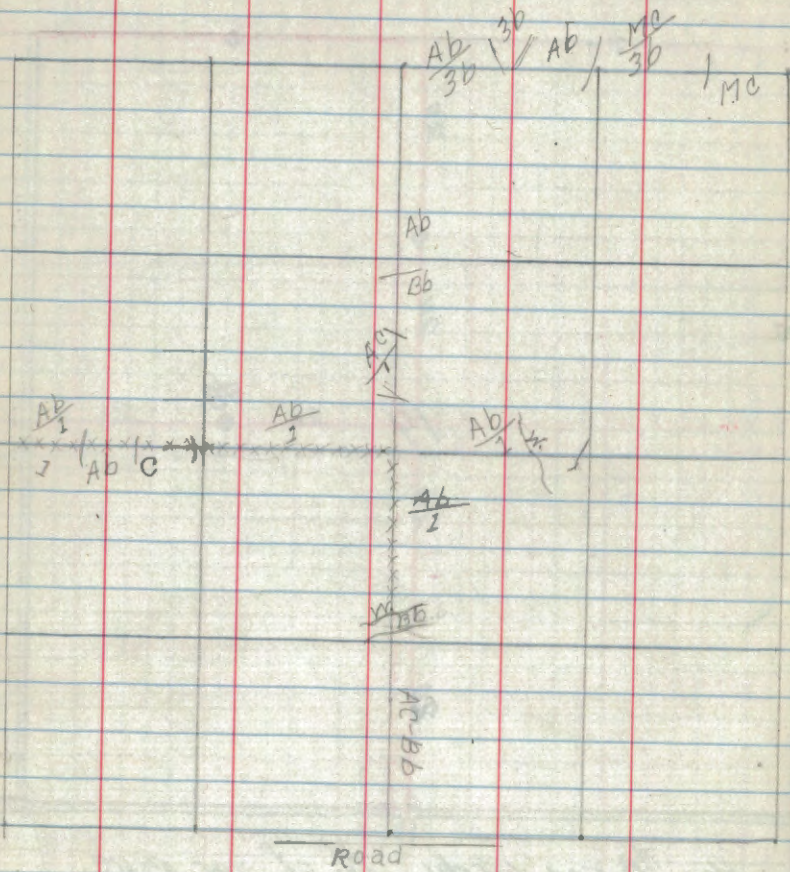


App N<sup>1</sup>/<sub>4</sub> 94 chs. N. of True Corner  
 BT. Stump 84 chs N.W. of App.  
 NE Sec. Cor.

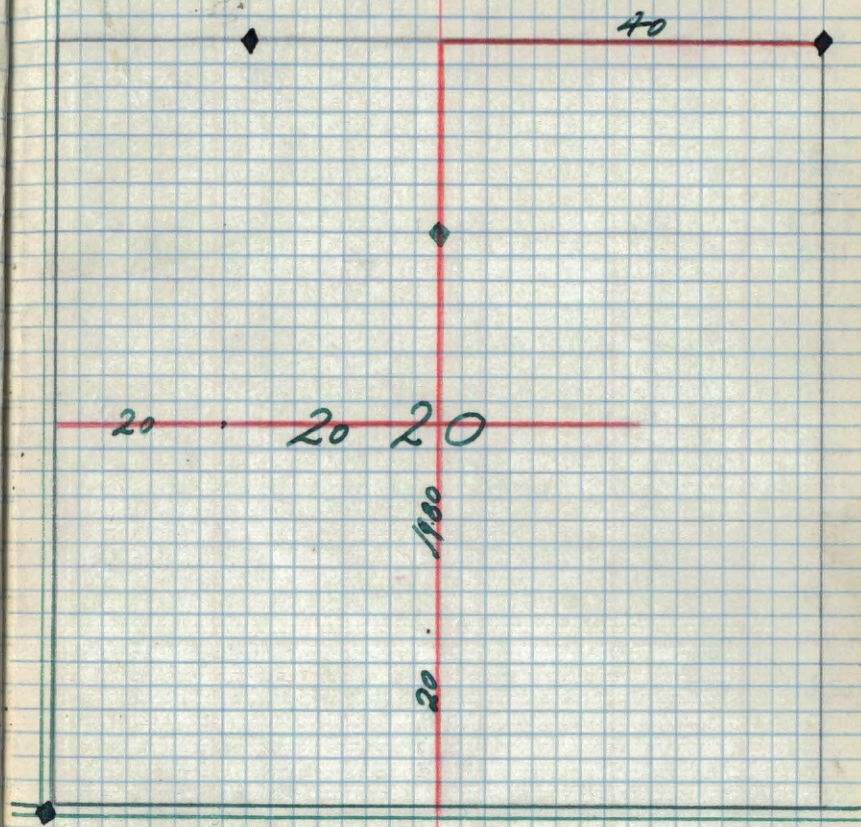


App #8 cor. 1/4 chs. N. of gas pipe.

Road



50







M-b M-B  
M-B

22

AC AC

BC

AC

MC

AC

River

S

70

70

70

70 7B

Ab

70 1

AC

70

70

70

70

70

70

23

20

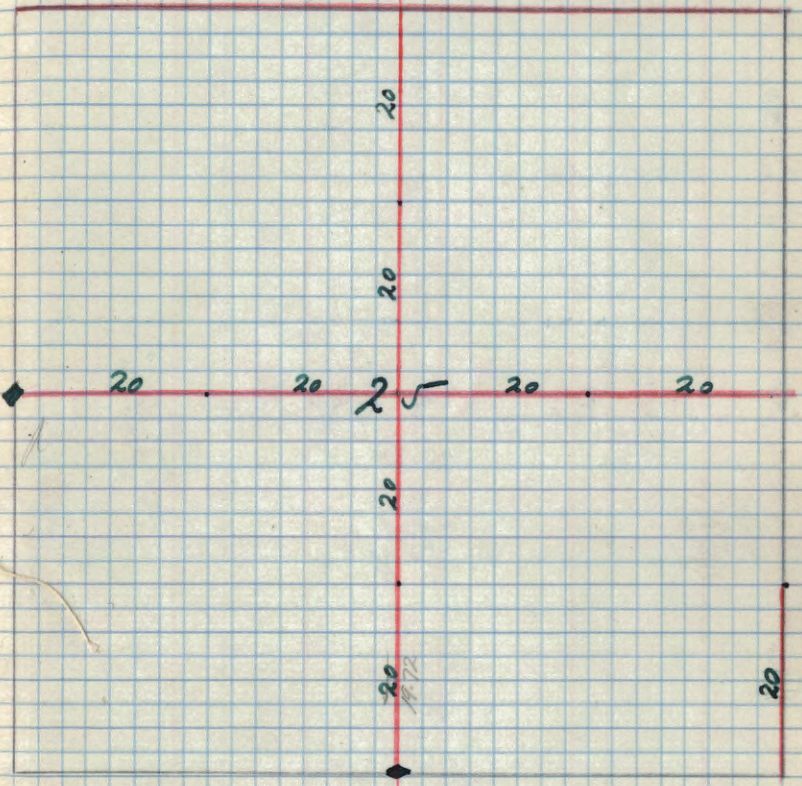
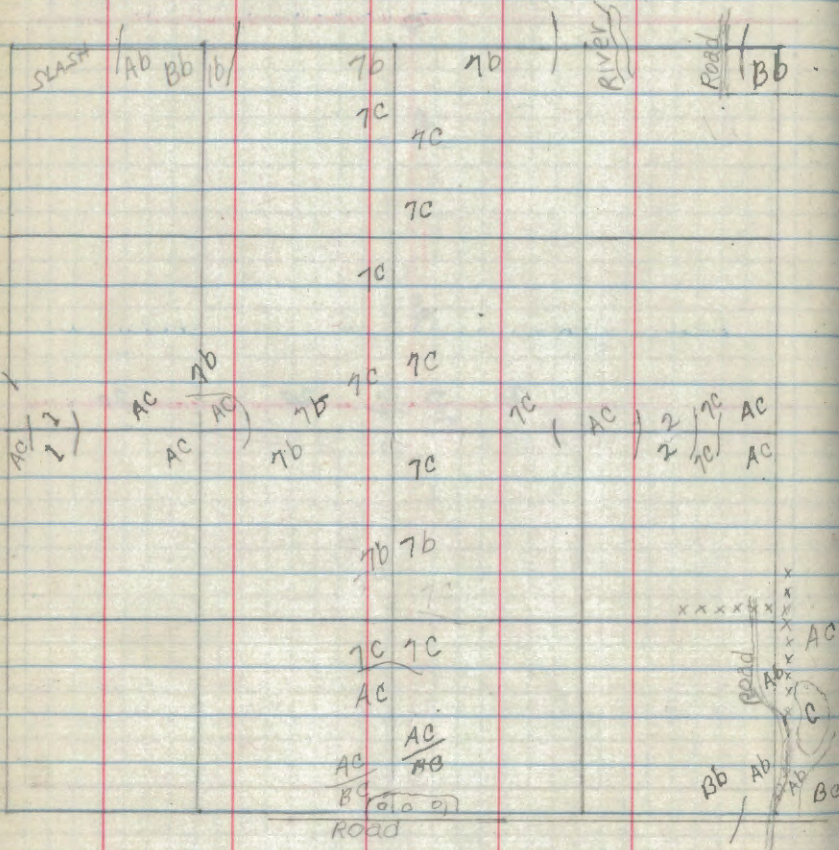
20

20

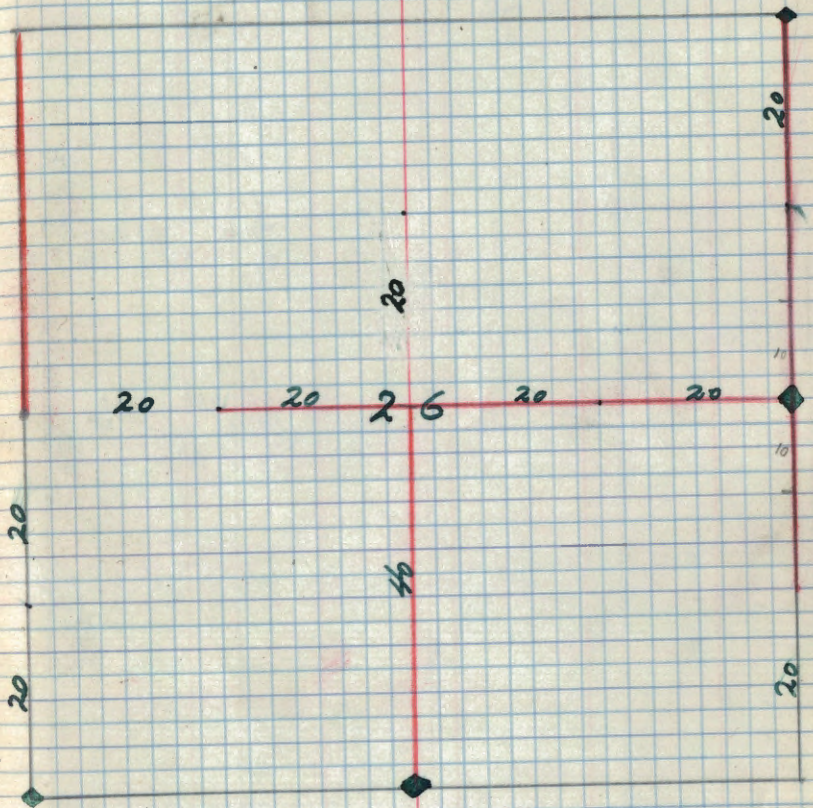
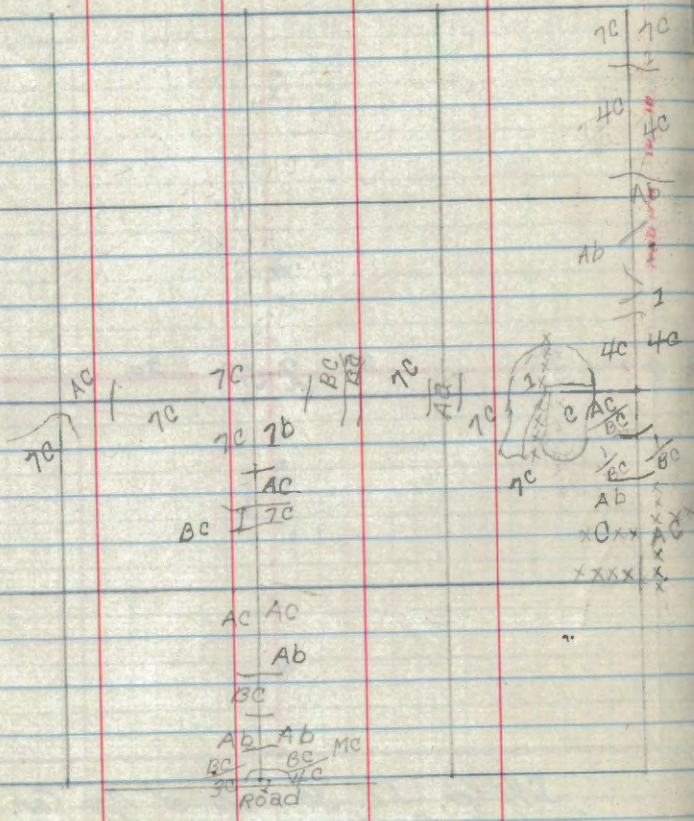
20

E<sup>7</sup> Cor • N.W. 1/4 Inter of App. Cor.





S 1/4 Cor. S.E. 30 Links of App Cor. Line  
 20 Links E. of a cor.  
 W 1/4 Cor. 15 Links N. of App Cor.



MD

~~ROAD~~ A-B X-1 A-B B-4  
X-1 AD-B

16 1A  
17 1A  
18 1A  
19 1A

~~ROAD~~

AD

AD  
BB

AD

AD  
ED

A-B IN B X-B

9-AB B-4

~~ROAD~~

20

27





$\frac{BC}{AB}$  | 4a | 4b | LAKE  
 | 4b

$\frac{AC}{BC}$  | 1b | 20 | LAKE  
 | 20

29

See Book #2