

ROAD SURVEY

Field-
4

FIELD
MANUAL BOOK

Field

4

ccc 63

Sta.	Bear.	Dist.	Notes
0+00	S 81 1/2 E	370	
3+70			

0+00	S 81 1/2 E	370	
3+70			
	S 72 1/2 E	763	
11+33			

$$\begin{array}{r}
 7+63 \\
 370 \\
 \hline
 11+33
 \end{array}$$

Sta. 11+33

to fall 5.0° 603' of
 1/4 cor. Sec. 10/11 T20

Sta.	Bear.	Dist.	Notes
0+00	S 87 1/2° E	1604 ✓	Small Jack pine 137+23
16+04	S 87 1/2° E	1218 ✓	149+91
28+22	N 86° E	225 ✓	151+66
30+47	N 57 1/2° E	828 ✓	159+99 Jack pine some N pine
38+75	N 26° E	246 ✓	162+90
41+21	N 6° E	264 ✓	165+04
43+85	N 21° E	195 ✓	166+99
45+80	N 61° E	176 ✓	168+75 Swamp on both sides of rd.
47+56	N 89 1/2° E	195 ✓	170+70 Small Jack Pine
49+51	S 89 1/2° E	1338 ✓	Some aspen 184+08
62+89			

To Section Line Post or cor. S 10° E -
 DIST.

16704
 12+18

 28+22
 2+25

 3047
 828

 3875
 246

 4121
 264

 4385
 195

 4580
 176

 4756
 195

 4951
 1338

 6289

STA	Bear. Dist	Notes
62+89	N89 $\frac{1}{2}$ °E 629 ✓	190+37
69+18	N79 $\frac{1}{2}$ °E 1119 ✓	20456
70+37	N61 $\frac{1}{2}$ °E 224 ✓	203+80
72+61	N33°E 217 ✓	205+97
74+78	N29°E 499 ✓	210+96
79+77	N28°E 4316 ✓	224+12
92+93	N28°E 495 ✓	226+07 to yellow post marked 11.33 d w to 1/4 on south side shot due E 18 $\frac{1}{2}$ feet.
94+88	N28 $\frac{1}{2}$ °E 4355 ✓	239+62 small aspen some pine
108+43	N56 $\frac{1}{2}$ °E 199 ✓	241+41
110+42	N66°E 326 ✓	244+87
113+68	N87°E 184 ✓	246+71 to intersection of rd 4513
115+52		

Checked &
rechecked
9/7/39

62.89
 629
 6918
 1119
 703.7
 224
 7261
 217
 7478
 499
 7977
 1376
 9293
 195
 9488
 1355
 10843
 199
 11042
 326
 11368
 184
 11552

Road 4513 {Old Bena Rd.}

STA	Bear. Dist	Notes.
0+00		Start at center of ¹⁹³⁰ R29W.
3+57	N47° W. 357 ✓	S86° to MC. ¹¹⁶ 7145 N
8+88	N3 1/2° W. 531 ✓	
12+48	N10° W. 360 ✓	
14+85	N4 1/2° E 237 ✓	to intersection of rd 4514
18+01	N4° E. 316 ✓	
33+26	N13° W. 1525 ✓	Small aspens some Norway spruce
37+97	N37° W. 471 ✓	to culvert 22' L 14"
39+18	N37° W 121 ✓	
45+50	N56° W 632 ✓	Small aspens some Norway spruce
48+34	N52° W 284 ✓	
49+62	N72 1/2° W. 128 ✓	
52+19	S83° W 257 ✓	Platted & checked 9/20/39 OM

357
 531

 888
 1360

 1248
 237

 1485
 316

 1801
 1525

 3326
 471

 3797
 121

 3918
 632

 4550
 284

 4834
 128

 4962
 257

 5219

STA	Bear. Dist	Notes
52+19	N59°W. 596 ✓	Sta 15 155 6000
58+15	N. 54½° W. 185 ✓	
60+00	N 79½° W 345 ✓	
63+45	N 51° W. 442 ✓	
67+87	N 67° W. 395 ✓	to corner 22' 4 1/2" D
71+82	N 67° W 133 ✓	
73+15	N 61° W 114 ✓	to post marked 114 ch. W to sec cor 2 - N. 0° 21'
74+29	N 61° W 345 ✓	
77+74	N 64° W 470 ✓	to post marked 5.11 ch. to Sec cor. 35 36 measure 2 1/2'
82+44		to corner 330' to post N 0° 21'
93+92	N 64° W 1148 ✓	to intersection of road 4610 set stake 13' bright of Sta.

Plotted &
checked
9/24/39

60
5
370

5219
596
5815
185
6000
345
6345
442
6787
395
7182
133
7315
114
7429
345
7774
470
8244
1148
9392

93.92
115.52
20944
15840 3
5110 4 2553
5280 2640
1000
176
2552 83
2640

3.9 miles

Tuesday Aug 29

7.35
1.10
1.05
8.75
4.25

STA	Bear Dist	Notes
0+00		
3+23	S.44°E. 323	start at center of rd S. 50° 66' to M.C.
4+57	S.32°E. 134	
8+12	S.60°E. 355	
11+99	N.84½°E. 387	
14+60	N.87°E. 261	to culvert 12' L. 16" D swamp. Cedar some birch
16+65	N.87°E. 205	
26+45	S.68°E. 980	to culvert L. 16' D. 12"
28+17	S.68°E. 172	Jack pine some birch
28+97	S.25°E. 80	to culvert L. 14' D. 12"
31+51	S.25°E. 254	
34+66	S.46°E. 315	small aspen some W. pine
41+23	S.47°E. 657	
47+42	S.18½°E. 619	Plotted & checked 9/20/59

323
134
457
355
812
387
1199
261
1460
205
1665
980
2645
172
2817
80
2897
254
3151
315
3466
657
4123
619
4742

STA	Bear	Dist	Notes
47+42	S.4° E.	471 ✓	small Jack pine.
52+13	S.13° W.	1117 ✓	
63+30	S.9° E.	408 ✓	
67+38	S.34½° E.	362 ✓	Small Jack Pine some aspen
71+00	S.42° E.	657 ✓	
77+57	S.44° E.	286 ✓	
80+43	S.79° E.	240 ✓	
82+83	N.87° E.	298 ✓	to post. marked 485 to Sec on ²¹⁸ 1718 Side stake to post N1° E. 24' found 4 B.T. but no Cor.
85+81	N.87° E.	105 ✓	
86+86	S.84° E.	415 ✓	Jack Pine some N. pine
91+01	N.88½° E.	944 ✓	
100+45			

4742

471

5213

1117

6330

408

6738

362

7100

657

7757

286

8043

240

8283

298

8581

105

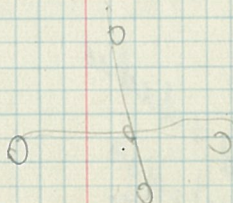
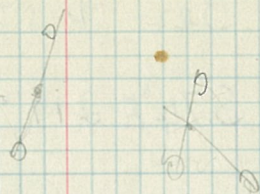
8686

415

9101

944

10045



STA.	Bearing	Dist	Notes
100+45			
102+62	S. 74° E	217	to intersection of Schley rd N 76° 17' to blazed tree.

Platted & checked
9/20/39
a

100 45

2 17

18262

13959

24221

Road. 4610 Miss-Winnic Rt.
Notes

STA	Bear Dist	Start/Center of road
0+00		N6°W 10' to flogged tree
5+91	N.52°E. 591 ✓	
9+55	N.48°E. 364 ✓	
12+58	N.50°E. 303 ✓	
15+58	N.27°E. 300 ✓	
17+85	N.42½°E. 227 ✓	
20+87	N.62°E. 302 ✓	
23+77	S.83°E. 290 ✓	
28+76	S.65°E. 499 ✓	tipost marked 3.12 ch S. to ¼ cor Sec. 31-32 Side shot N. 10°E 14' found 2 B.T. of found approx. cor. stake
29+89	N.89½°E. 113 ✓	
34+81	N.72°E. 492 ✓	
4+88	N.62°E. 707 ✓	

Jacob Pine

Plotted & checked 9/10/59

591
364
955
303
1258
300
1558
227
1785
302
2087
290
2377
499
2876
113
2989
492
3481
707
4188

S.T.A Bear Dist Notes

41+88

N.63½° E. 597 ✓

47+85

N.71° E. 372 ✓

51+57

S.81° E. 1793 ✓

69+50

S.82° E. 1340 ^{Plantation}

82+90

S.82° E. 69 ✓

83+59

S.80° E. 1492 ✓

98+51

S.80° E. 716 ✓

105+67

S.79½° E. 1531 ✓

120+98

S.77½° E. 818 ✓

129+16

S.45° E. 682 ✓

135+98

S.62° E. 361 ✓

139+59

STA 139+59 - N 810' to ¼ Cor Sec 33/34
G.L.O.

to poster marked 9 ch 25
S. to ¼ Cor Sec 32/33
Side shot N 12° E 9'
found 2 B.T. and approx. 8'

4188

597

4785

372

5157

1793

6950

1340

8290

69

8359

1492

9851

716

16567

1531

12098

818

12916

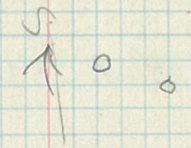
682

13598

361

959

Plotted
checked
9/20/09
O. M. ...



24221 ✓

Rd 4612 Jack Smith Rd
 STA Bear Dist NOTES
 0+00 Start at intersection
 0+00 rd. 469. Set stake
 S. 65° E. 13'
 3+56 N. 15° W. 356 ✓
 7+88 N. 24° W. 432 ✓
 22+56 N. 23° W. 1468 ✓
 37+99 N. 23½° W. 1543 ✓
 45+29 N. 24½° W. 730 ✓
 47+90 N. 45° W. 261 ✓ swamp to left
 56+65 N. 55½° W. 875 ✓
 67+54 N. 56° W. 1089 ✓ small jack pine
 79+93 N. 57° W. 1239 ✓
 92+49 N. 57° W. 1256 ✓
 106+10 N. 56° W. 1361 ✓
 108+98 N. 68° W. 288 ✓

356
 432
 788
 1468
 2256
 1543
 3799
 730
 4529
 261
 4790
 875
 5665
 1089
 6754
 1239
 7993
 1256
 9249
 1361
 10610
 288
 10898

STA.	Bear. Dist.	NOTES
108+98	N.80°W. 280	✓ hazel brush some oak
111+78	N.80°W. 382	✓ to culvert L 22' D 18"
115+60	N.80°W. 702	✓
122+62	N.82½°W. 289	✓
125+51	S.71½°W. 168	✓ swamp to left
127+19	S.47°W. 100	✓
128+19	S.88°W. 150	✓
129+69	N.74°W. 90	✓ ← End of grade road jack pine some aspen
130+59	S.50°W. 92	✓
131+51	S.45°W. 100	✓
132+51	S.49°W. 257	✓
135+08	S.75°W. 179	✓
136+87	S.89°W. 145	✓
138+32		

10898
 280

 11178
 382

 11560
 702

 12262
 289

 12551
 168

 12719
 100

 12819
 150

 12969
 90

 13059
 92

 13151
 100

 13251
 257

 13508
 179

 13687
 145

 13832

STA	Bear	Dist	Notes
138+32			
	N 76 ¹ / ₂ ° W	148 ✓	
139+80			
	S 80° W	165 ✓	w. pine N. pine some aspen
141+45			
	N 75° W	74 ✓	
142+19			
	N 61 ¹ / ₂ ° W	50 ✓	
142+69			
	N 87° W	75 ✓	to cen. of Pennington blaze aspen N 87° W. 21'
143+44			

Checked
+ plotted
9/20/39
P.M.

13832
148
<hr/>
13980
165
<hr/>
14145
74
<hr/>
14219
50
<hr/>
14269
75
<hr/>
14344

ROAD 469.

STA	BEAR	DIST	NOTES
0+00			Start at yellow post marked 3.50 chs E to Sec. on Sec. 26/25 T.146 R.30. 35/36 measured BUEE. 330' to sec. cor start center of road 22' E of post.
0+00	N28½°E	126	STA 0+00 of road 4610
12+6	N42½°E	416	✓
5+42	N45°E	1472	Some open small fadging
20+14	N45°E	1334	✓
33+48	N46½°E	983	✓
43+31	N47°E	1385	✓
57+16	N46°E	1288	✓
70+04	N36½°E	1392	to post marked 3.654 N.C. T 146 R 29 25/30 side shot N.50°W.16' to post
83+96			

126
 416
 542
 1472
 2014
 3348
 4331
 1385
 5716
 1288
 7004
 1392
 8396

14344
 8396
 22740

14344
 8396
 22740

Plotted &
checked
9/29/59
P.M.

Check with Smith

STA	Bear Dist.	Notes
83+96	N.33°E. 150 ✓	
85+46	N.14½°W. 388 ✓	
89+34	N.38½°W. 238 ✓	to edge of Mississippi bridge
91+72		Sta 6' to right

$$\begin{array}{r}
 8396 \\
 \underline{150} \\
 8546 \\
 \underline{388} \\
 8934 \\
 \underline{238} \\
 9172
 \end{array}$$

Matt
 checked
 9/20/39
 O.M.

$$\begin{array}{r}
 14344 \\
 \underline{9172} \\
 23516 \text{ } \frac{1}{4} \text{ Thursday}
 \end{array}$$

Aug 31

Friday Sept. 1, 1939.

STA.	Beam	Dist.	NOTES.
91+72			Start Mississippi bridge
93+29	N 41° W	157	edge of Bridge length 157' W. 14'
	S 35° W	33'	to M.C.
	T. 146 N.		
	R. 30 W	R 29 W	G.L.O.
	S. 24	519	
			M.C.
	N. 16° W	57'	to post marked 2.07 ch. N to 1/4 cor. Sec. 24 + 19

93+29

N. 29° W 109

94+38

N. 10 1/2° E 261

96+99

N. 1° E. 80

97+79

N. 1° E 1025

108+04

N. 1° E. 314

111+18

N. 1° E. 658

to post. Due E. 17'
and B.T. 1/4 cor. Sec. 19.
Conspicuously in road

to post. Due E 13'

each indicates 1/4 cor. section
24 + 19

9172

157

9329

109

9438

261

9699

80

9779

1025

10804

314

11118

marked H.W.

118+18

N1°E 658 ✓ to Birch Hill town rd.

117+76

N89°E 15' to telephone pole. See Sta 117+76

N1°E. 673 ✓

124+49

N2°E 1216 ✓ to post marked 23 lbs to sec. con. side shot to post N82°W. 14'. Sec. 13

136+65

N1°E. 318 ✓ to culvert L. 14' D. 20' swamp.

139+83

N1°E. 838 ✓ mixed H.W. trees

148+21

N1°E. 57 ✓ to culvert L. 18' D. 14"

153+92

N1°E 330 ✓ to culvert L. 18' D. 14"

157+22

N1°E. 654 ✓

163+76

N1½°E. 54 ✓ to culvert L. 16' D. 12"

164+30

N1½°E. 1075 ✓ to culvert

175+05

N1½°E. 625 ✓

181+30

N1°E. 814 ✓ to post side shot S83°W 14' post marked 28 lbs to sec. con.

189+44

11118

658

11776

673

12449

1216

13665

318

13983

838

14821

571

15392

330

15722

654

16376

154

16430

1075

T 146N

R^N R^W

30 29

1217

13118

17505

625

18130

18944

11776

7168

5280

88

18130

814

18944

Plotted & checked 9/20/39 J. Walker

Found Co. L. O. Con uplifted and hoisting beside post. Grade probably pulled up

STA	Bear Dist	Notes
189+44	N1°E 900	to Long Lake road Set Sta 198+44
198+44	N1°E 187	to culvert L18' D12"
200+31	N2°E 1135	mired H.W. some W. pine " N pine
211+66	N1°E 568	to post. 1/4 Cor Sec. 127 R20 R29.
217+34	N1°E 55	to culvert L.20 D.16' Set Sta 219+20
217+89	N1°E 131	to rd. 4611. Set stake Due E 11'
219+20		

18944

900

19844

187

20031

1135

21166

568

21734

55

21789

131

21920

21920

9172

12748

12,748' Friday

8432

21180

469 ~~459~~ to Long Lake

Bear

0+00

N. 25° E 118 ✓

State on 459 Pennington rd

1+18

N 66 1/2° E 114 ✓

at Sta 198+44 on

2+32

S. 81° E. 273 ✓

opposite page.

5+05

S. 75° E. 487 ✓

no way + white
pin some small
appear

9+92

S. 87 1/2° E 369 ✓

13+61

S. 89° E 401 ✓

17+62

S. 72° E 134 ✓

18+96

S. 37° E 229 ✓

21+25

S. 69° E. 190 ✓

23+15

S. 43° E. 342 ✓

24+57

S. 73° E. 145 ✓

28+02

S. 85° E 121 ✓

29+23.

Open some
white Norway Pine

check
+ meter
9/2/59

118

114

232

273

505

487

992

369

1361

601

1762

134

1896

229

2125

190

2315

342

2657

145

2802

121

2923

STA.	Bear	Dist	Notes
29+23	S. 52 $\frac{1}{2}$ ° E	223 ✓	
31+46	N. 78° E	70 ✓	to pool marked 7 75 lbs E to 1/4 corner found Cor. from state Cor. S. 80° E 64'
32+16			
	N 34° E	121 ✓	
33+37			
	N. 1 $\frac{1}{2}$ ° W.	157 ✓	
34+94			
	N. 40° E.	104 ✓	
35+98			
	N. 68° E.	372 ✓	lay aspen
39+70			
	N 82° E	156 ✓	
41+20			
	N 68° E	218 ✓	
43+38			
	N 89° E	168 ✓	
45+06			
	S. 81° E	457 ✓	9/2/53 sketch + notes Om
49+63			
	S. 82° E	360 ✓	
53+23			
	N 58° E	188 ✓	
55+11			

29+23
 223
 3146
 70
 3216
 121
 3337
 157
 3494
 104
 3598
 372
 3970
 150
 20
 4218
 4338
 168
 4506
 457
 14963
 360
 5323
 5189
 5511

Sta	Bear Dist	Notes
55+11	N.51°E. 243 ✓	small swamp to left. aspen
57+54	S.73°E. 107 ✓	
58+61	S.59°E. 136 ✓	
59+91	S.81°E. 241 ✓	small aspen
62+32	N.64°E. 108 ✓	some N. pine
63+40	N51°E. 39 ✓	to post marked 9.70 ch S. to Sec. on Sec. 71 12/17 Side shot to post T146 R29 N0°22'
66+37	N.51°E. 258 ✓	swamp
68+45	N.63½°E. 208 ✓	
71+60	N.37°E. 315 ✓	aspen Norway pine
73+44	N.72°E. 184 ✓	
75+60	N.35°E. 216 ✓	
77+94	N.28°E. 234 ✓	

55.11
 243

 57.54
 107

 58.61
 136

 59.91
 241

 62.12
 108

 63.20
 39

 63.59
 258

 66.17
 208

 68.25
 315

 71.40
 184

 73.24
 216

 75.40
 234

 77.74

9.70
 66

 58.20
 20

 58.20
 20

 64.00

9.70
 66

 58.20
 20

 58.20
 20

 64.00

STA	Bear Dist	Notes
77+94	N50°E 165 ✓	nowrap pine some small aspen
79+59	N66°E 186 ✓	
81+45	N.6° E. 307 ✓	
84+52	N.9° E. 265 ✓	
87+17	N.14° W. 100	
88+17		

Plotted
& checked
9/22/39
M.M.

7774
 165
 7939
 186
 8125
 307
 8432
 265
 8697
 100
 8797

Friday
 Sept. 1.

12,748
 8,797
 21,545

18+37

0+88

21+55

37

21+63

109

22+11

73

23+44

129

24+73

94

25+67

153

28+20

293

31+13

108

32+21

21

5280 $\overline{) 3321.00}$ ^{multi}
3168 00
153 00
158 40

Sta.	Bearing	Dist	Notes
53+95	S. 13 1/2° E	179 ✓	stopped set stakes 9' to left
55+74	S. 14° E.	91 ✓	
56+65	S. 17° W	139 ✓	
58+04	S. 11° E.	249 ✓	
60+53	S. 31 1/2° E	118 ✓	
61+71	S. 55 1/2° E	208 ✓	
63+99	S. 76° E	178 ✓	
65+57	S. 30 1/2° E	163 ✓	
66+60	S. 1 1/2° W	98 ✓	
67+58	S. 40° W	168 ✓	
68+58	S. 59° W	126 ✓	
69+84	S. 74° W	186 ✓	
71+70			

5385
 91
 5476
 139
 5615
 249
 5864
 118
 5982
 208
 6190
 174
 6368
 163
 6471
 98
 6569
 163
 6669
 126
 6795
 186
 6981

STA Bury Dist

NOTES

71+70

S. 44 1/2° W 434 ✓

76+04

S. 67° W 159 ✓

77+63

S. 83° W 426 ✓

81+89

N. 89° W 281 ✓

84+70

N. 63° W 279 ✓

87+49

N. 69 1/2° W 287 ✓

90+36

N. 87° W 316 ✓

93+52

N. 35 1/2° W 200 ✓

95+52

N. 44° W 161 ✓

91+13

to center of W. Piche Bay loop
to Sta. 140+92

Checked
10/21/39
P.M.
& Capt. Johnson
(M.)

Said to be young pine
some small birch
& aspens

Checked
for collation
9/28/39

6981

434

415

159

7574

426

8000

287

8281

279

8560

287

8847

316

9163

200

9363

161

9524

4574
5395
9973

4510

No T E S.
5 stakes edge of U.S. #3
Highway.

STA	Bear	Dist	
0+00	S. 11° W	141 ✓	to G.N. line main track
1+41	S. 11° W	16 ✓	to G.N. line side track
1+57	S. 11° W	66 ✓	
2+23	S. 31° W	655 ✓	aspen
8+78	S. 11° E	32 ✓	to culvert L. 21' R. 16"
9+10	S. 11° E	364 ✓	
12+74	S. 8° W	376 ✓	aspen some W. pine to right
16+50	S. 4½° E	683 ✓	
23+33	S. 9° E	100 ✓	
24+33	S. 15½° E	218 ✓	to culvert mixed H.W. some W. pine
26+51	S. 15½° E	181 ✓	
28+32	S. 15° W	159 ✓	
29+91	S. 43° W	106 ✓	side shot to post. N. 1° W. 30'
30+97			to post. marked 21.07 ch. E to Sec. cor. $\frac{21122}{20127}$ T. 145° R. 29° W

141
 16

 157
 66

 91
 32

 364

 1274
 376

 1650
 683

 2333
 100

 2433
 218

 2651
 181

 2832
 159

 2991
 106

 3097

STA	Bear Dist	NOTES
30+97✓	S.63°W. 127✓	to culvert L. 16' D. 16"
32+24	S.63°W 303✓	
35+27✓	S.86°W 277✓	mixed H.W. Some W pine
38+04	S.46½°W 94✓	to center of Sooty tracks
38+98	S.16°W. 36✓	
39+34	S.38½°E 516✓	
44+50	S.39°E 345✓	to culvert L. 20' D. 16"
47+95	S.39°E. 51✓	
48+46	S.11° W 279✓	
51+25	S.8½°W 271✓	
53+96	S.7° W 221✓	
56+17	S.12½°E 296✓	
59+43	S.29°W 139✓	
60+52		

Addition
checked

3097
 127
 3224✓
 303
 3527✓
 277
 3804
 94
 3898
 36
 3924
 516
 4440
 345
 4785
 51
 4836
 279
 5115
 271
 5386
 221
 5607
 296
 5903
 139
 6042

STA Bear Dist

NOTES

60452

S. 39° W 121 ✓

61+73

S. 15° E. 244 ✓

64+17

S. 14° W 265 ✓

66+82

S. 34° W 342 ✓

70+30

S. 15½° W 201 ✓

72+31

S. 19½° W 309 ✓

75+40

S. 14° E 262 ✓

78+02

S. 19½° W 226 ✓

80+28

S. 34½° W 12 ✓

to culvert L 18" - D 12"

80+40

S. 34½° W 189 ✓

82+29

S. 17° W 264 ✓

84+95

S. 23° W 322 ✓

88+17

S. 18½° W 422 ✓

92+39

mixed H.W.
some natural W. pine

mixed H.W.
some Norway pine

addition
check

6042

121

6163

244

6407

265

6672

368

7020

201

7221

309

7530

262

7792

226

8018

12

8030

189

8219

264

8485

322

8807

422

9229

STA Bear Dist — NOTES

192+39 S. 21½° W 74 ✓ to post marked 39.70 ch. W to
 Sec. cor tack indicates ¼ cor
 Sec. 28 T. 145^N R. 29^W
 33

93+13 S. 23° W 80 ✓ to Culvert L. 20' D 16"
 Side shot to post N. 38° W. 18'

93+93 S. 23° W 227 ✓

96+20 S. 0° 5 ✓ to Culvert L. 20' D 16"
 miped H. W.

96+25 S. 0° 402 ✓

100+27 S. 12° E 544 ✓

105+71 S. 14½° E 471 ✓

110+42 S. 9½° E 530 ✓

115+72 S. 6° E 282 ✓

118+54 S. 26½° E 556 ✓

124+10 S. 0° 1114 ✓

135+24 S. 4° W 515 ✓
 140+39

*Additions
 checked*

9329
 74

9300
 80

9383
 227

9610
 5

9615
 402

10017
 544

10561
 471

11032
 530

11562
 282

11844
 556

12400
 1114

13514
 515

14029

39.70
 660
 23820
 23820
 262020

STA Bear Dist

140+39

S. 11° W 130 ✓ to cabinet L. 20' D 16"

141+69

S. 11° W. 292 ✓

144+61

S. 20½° W 330 ✓ to post post marked 22.35 d

147+91

W. to sec cor. tack indicates ¼

cor. Sec. 33. Side shot to

post. 4 N. 21° W 24'

S. 12½° W 69 ✓

148+60

S. 1½° W 471 ✓

153+31

S. 16½° W 277 ✓

open maple
oaks

156+08

S. 40½° W 231 ✓ to cabinet L. 20' D 16"

158+39

S. 40½° W 64 ✓

159+05

S. 15° W 141 ✓ to cabinet L. 18' D 16"

160+40

S. 15° W 492 ✓ mixed H.W. some Wipin

165+38

S. ½° W 300 ✓ to cabinet L. 18' D 14"

168+38

S. ½° W 119 ✓

169+59

checked
for addition

16029

130

14159

292

14451

330

14781

61

14842

471

15313

277

15596

231

15821

66

15887

141

16028

492

16520

300

16820

119

16939

STA	Bearing	Dist	NOTES
169+59			
	S. 10½° E	344 ✓	
173+01			
	S. 23° E	17 ✓	to corner H 18' D 18"
173+18			
	S. 23° E	471 ✓	
177+89			
	S. 8½° W	67 ✓	miped H.W. large white pine
178+56			
	S. 31° W	522 ✓	
183+78			
	S. 48° W	248 ✓	small aspen
186+24			
	S. 39½° W	302 ✓	
189+28			
	S. 49° W	90 ✓	
190+18			
	S. 30° W	655 ✓	small aspen some birch
196+73			
	S. 10° E	96 ✓	
197+69			
	S. 44½° E	205 ✓	Stopped at stake 6" to left.
199+74			

Checked
for arbutus

16939
344
 17283
17
 17300
471
 17771
67
 17838
522
 18360
248
 18608
302
 18910
90
 19000
655
 19655
96
 19751
205
 19956

9554
5206
 4318
5200
3
 15840

19956
4318
 24274

Sunday April 26 4510
Sta Beax Dist

199+79

S. 27° E.

S. 27° E 504 ✓

204+78

S. 8° E 73 ✓

to rd. 456. to post marked
9.30 chs W to sec. cor. $\frac{5}{4}$ T. 144
found approx. sec. cor. $\frac{8}{9}$ R. 29
Side shot to post N. 46° E
40'

205+51

S. 1/2° W 179 ✓

207+30

S. 49° W 261 ✓

209+91

S. 18° W 146 ✓ low amp on both sides of rd

211+37

S. 6° W 234 ✓

213+73

S. 22 1/2° W 272 ✓ to culvert L. 18' D. 16"

216+45

S. 16° W 167 ✓

218+12

S. 34° W 165 ✓ to post. marked 19.11 chs N to sec

219+77

Cor. $\frac{5}{4}$ side shot to post
N 59° W 17'

Notes

Station 6' to right

of stake sta. 199+56

19954

504

20660

73

20533

179

20712

261

20973

146

21119

236

21355

272

21627

167

21794

234

21965

165

21959

checked for addition

Sta	Bearing	Dist	Notes
219+79	S. 26½° W	254 ✓	small aspen some W pine
222+31	S. 13½° W	247 ✓	
224+78	S. 13½° W	222 ✓	small aspen birch oak maple
227+00	S. ½° E	535 ✓	
232+35	S. 0°	215 ✓	to culvert L 18' D. 16"
234+50	S. 0°	127 ✓	
235+11	S. 17½° W	207 ✓	mixed H. W. scattered large W. pine
237+84	S. 42° W	476 ✓	
242+00	S. 38° W	165 ✓	
244+25	S. 49° W	51 ✓	to culvert
244+96	S. 49° W	45 ✓	
245+24	S. 61° W	416 ✓	
249+37	S. 52° W	152 ✓	
254+80			

checked for asbestos

21959
 254
 22213
 247
 20460
 222
 22682
 535
 23217
 23215
 23438
 127
 23539
 207
 23766
 476
 24242
 165
 24487
 51
 24458
 45
 24503
 416
 24919
 152
 25071

572 Bears Dist

Notes

250+89

S. 28° W 435 ✓

255+24

S. 30½° W 204 ✓ mixed H.W. some W. pine

257+28

S. 44° W 244 ✓

259+9W

S. 25° W 272 ✓ to cubret L. 20' D. 18"

262+44

S. 36½° W 284 ✓ N + W. pine some H.W.

265+28

S. 24° W 231 ✓

267+59

S. 7° W 102 ✓ to post marked 6.45 ch W to

268+61

¼ cor. Sec. 8. approx. ¼ cor.
side shot ^{17'} side to post N 75° W
18'

S. 24° W 295 ✓

271+56

S. 19° W 237 ✓ mixed H.W. some W. pine

273+93

S. 8½° W 217 ✓

276+10

S. 25° W 257 ✓ to cubret L. 18 D. 16"

278+61

S. 45½° W 298 ✓

281+65

Checked by
Addition

25071

435

25506

204

25710

244

25954

272

26306

284

26510

237

26741

102

26843

295

27138

237

27375

217

27592

257

27849

298

28147

6.45
38.66
38.70
38.70
425.70

STA Bear Dist NOTAS

281+65

S. 34° W 108 ✓

282+73

S. 17½° W 530 ✓ mixed H W

288+03

S. 25½° W 353 ✓

291+50

S. 25½° W 335 ✓ to culvert L. 16' D. 18"
mixed H. W. some spruce
and White pine.

294+91

S. 16° W 254 ✓

297+85

S. 0° L 555 ✓

303+00

S. 11° E 625 ✓

309+25

S. 2° E 444 ✓

313+69

S. 10° W 3 ✓ to culvert L. 18' D. 16"

313+12

S. 16° W. 440 ✓ to culvert L. 18' D. 16"

318+12

S. 16° W. 18 ✓

318+30

S. 15° W 264 ✓ mixed H. W. some spruce
and W. pine

320+94

S. 28½° W. 357 ✓ to post marked 28.45 ch. W
to see cut back indicate ¼ cor. ^{S. 17}/₂₀

324+51

28147

108

28255

530

28785

353

29138

335

29473

254

29727

555

30282

625

30907

444

31351

3

31354

440

31794

18

31812

264

32074

357

32433

Sideshot to post N 71° W 10'

Checked
prospect

STA	Bear	DIST	Notes
324	51	S. 19½° W 133 ✓	to culvert L. 18' D 16"
325	84	S. 19½° W 63 ✓	
326	47	S. 26½° W 133 ✓	mixed H.W. some balem
327	80	S. 18° E 172 ✓	
329	52	S. 37° W 237 ✓	
331	89	S. 47½° W 7 ✓	to culvert L. 16' D 18"
331	96	S. 47½° W 308 ✓	
335	104	S. 35° W 253 ✓	to culvert L. 16' D 18"
337	59	S. 35° W 59 ✓	
338	116	S. 72½° W 277 ✓	
340	93	N 85° W 218 ✓	
343	11	S. 72° W 180 ✓	to
344	91	S. 47° W. 69 ✓	
345	66		

Checked for
addition

32433
<u>133</u>
32566
<u>63</u>
32629
<u>133</u>
32762
<u>172</u>
32934
<u>237</u>
33171
<u>7</u>
33178
<u>308</u>
33486
<u>253</u>
33739
<u>59</u>
33798
<u>277</u>
34075
<u>218</u>
34293
<u>180</u>
34473
<u>69</u>
34542

Sta	Bearing	Dist	Notes
345+60	S. 3 1/2° E	93 ✓	iniped H.W. some balsam
346+53	S. 27° E	210 ✓	to culvert L. 16' D 16'
348+63	S. 27° E	66 ✓	
349+79	S. 3° W	92 ✓	
350+21	S. 55° W	222 ✓	
352+43	S. 23° W	113 ✓	
353+56	S. 4 1/2° E	213 ✓	
355+69	S. 26° W	229 ✓	
357+98	S. 55° W	93 ✓	to culvert L. 18' D 12"
358+91	S. 55° W	110 ✓	
360+01	S. 28° W	200 ✓	toposter marked 1.90 chs N to 1/4 Cor. Dec. 19/20 Side shot to post. N 86° W 16' shot from post to G.L. cor No 125' T. 144 ^N R 29 ^W
362+01			

mixed hardwoods

checked for addition

345	42
	<u>93</u>
346	35
	<u>210</u>
348	45
	<u>66</u>
349	11
	<u>92</u>
350	3
	<u>222</u>
352	5
	<u>113</u>
353	8
	<u>213</u>
355	1
	<u>229</u>
357	8
	<u>93</u>
358	73
	<u>110</u>
359	3
	<u>200</u>
360	183

STA Bear Dist

Notes

362+01

S. 28° W. 203 ✓

364+04

S. 58½° W 44 ✓ aspen birchelm maple

364+48

N. 78° W. 250 ✓ small swamp to left.

366+98

S. 80° W 77 ✓ to cabinet L. 16' D. 18"

367+95

S. 80° W 23 ✓

367+98

S. 47° W 89 ✓

368+87

S. 16° W 112 ✓

369+99

S. 34° W 96 ✓

370+95

S. 23° W 221 ✓

373+14

S. 51° W. 53 ✓

373+69

N. 87° W. 172 ✓

375+41

S. 45° W 100 ✓

376+41

S. 56½° W 247 ✓

378+88

mixed hardwood

36183

203

36386

44

36430

250

36680

77

36757

23

36780

89

36869

112

36981

96

37077

221

37298

53

37351

172

37523

100

37673

247

37870

STA Bear Dist

NOTES

3378+88

S. 33° W 209 ✓

3380+97

S. 69½° W 262 ✓

3383+59

N. 75° W 196 ✓

3385+55

N. 59° W. 142 ✓

3386+91

S. 60° W 120 ✓

3388+17

S. 48½° W 190 ✓

3390+07

S. 48° W 200 ✓

3392+07

S. 4° W 422 ✓

3396+29

S. 16° W 81 ✓

3397+10

S. 37° W 69 ✓ stopped w/ Sta. 397+10

3397+99

10 ft. in front of Rock Springs Resort sign
end of road.

378700

209

38079

262

38341

196

38537

142

38679

120

38799

190

38989

200

39189

422

39611

81

39692

69

39761

² 39761

⁵ 19956

19805

19805 ✓

Oct. ~~Sept.~~ 4 1939. T146^N R29^W

3 Start at Sec Cor $\frac{22}{27} | \frac{23}{26}$ G.L.O.
line west Var. 7°

16.17 chs. to center of Sugar Lake Road.

3 19.50 chs to $\frac{1}{16}$ cor # $\frac{15}{1}$ Sec. $\frac{22}{27}$ G.L.O.
put together N. 46° W 26 1/2 chs to BT 12" aspen ✓

S. 38° E 29 1/2 chs to BT 8" hard maple
Cor. about 12" above ground in capped pipe.

3 19.52 chs to $\frac{1}{4}$ cor Sec $\frac{22}{27}$ G.L.O. ✓

B.T. N. 28° W 14 chs 16" birch dead

B.T. S. 9 1/2° W 39 chs 12" birch

Large W. pine log laying near Cor. Cor. 8' above ground

3 19.50 chs to approx $\frac{1}{16}$ cor. # $\frac{16}{2}$ Sec. $\frac{22}{27}$

3 19.52 chs to approx Sec. cor. marked GLO ✓

Cor. 18 chs to left of cor. Sec. $\frac{21}{22} | \frac{24}{27}$

B.T. N. 42° W 49 chs 20" W. oak (dead)

B.T. N. 22° E 60 chs 14" white oak (dead)

B.T. S. 70° E 48 chs 10" ~~oak~~

B.T. S. 26° W 23 chs 8" W. oak

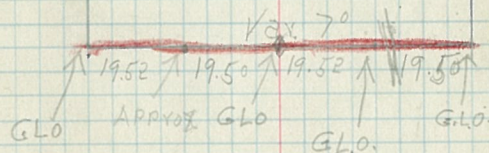
315
~~245~~ 1.15

SEC. 22 T146^N R29^W

Sec. 21

Sec. 22

Sec. 23



Sec. 27

Accomplished Oct. 4, 1939

33
19.52
19.50
19.52
19.50

78.04

Oct 5 1939 activity # 3

Start at $\frac{1}{4}$ cor # 15 Sec. 22 G.L.O.

Run line N Var. 6.30

5.06 chs to center of trail going E-W

19.90. chs set approx $\frac{1}{4}$ cor # 13

19.79 to C.E. $\frac{1}{4}$ cor. Sec. 22 G.L.O.

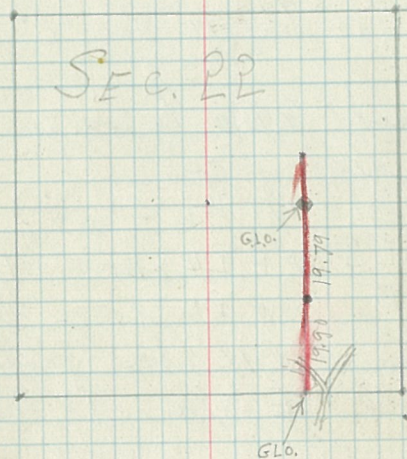
B.T.N. 73° W 51 lbs 12" white oak

together B.T.S. 10° W 31 lbs 1" maple

Cor. post 10" high

Continue line N. 10 chs.

19.90
7.23
12.67



Accomplished Oct. 5, 1939

Oct. 6, 1939

Start at Sec. cor. $\frac{21}{28} | \frac{22}{27}$ G.L.O.

run line N. Var. 7°

19.95 chs set approx $\frac{1}{4}$ cor. # 17-10 Sec. 21-22
Continue line N. Var. 7°

19.74 missed G.L.O. $\frac{1}{4}$ cor. Sec. 21-22. 28 lbs
to left of cor.

B.T. S 50° E 24 lbs 10" aspen

B.T. S. 47° W 26 lbs 6" birch set

G.L.O. Cor. about 10" above ground

Run line E Var 7° from $\frac{1}{4}$ cor
Sec. 21-22

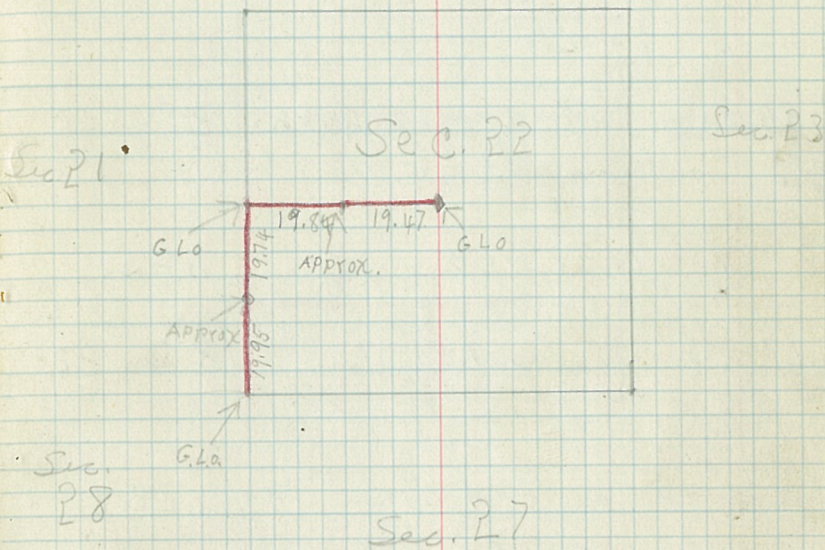
19.84 chs set approx C.W. $\frac{1}{4}$ cor #9
Continue line E Var. 7°

19.47 chs. to G.L.O. C. $\frac{1}{4}$ cor. Sec. 22

B.T. S. 70° E 36 lbs 8" maple

B.T. N. 40° W 26 lbs 6" birch

Cor. about 8" above ground



Accomplished Oct. 6, 1939

Oct. 10, 1939

Start at approx $\frac{1}{4}$ cor #17-10 Sec. 21-22
run line E Var. 6° Stop 18 lb
South of approx cor to follow old
line

19.54 chs set approx $\frac{1}{4}$ cor #11 Sec. 22

19.54 chs. set approx $\frac{1}{4}$ cor. #12 Sec. 22
Continue line E Var. 6° (to follow old line) Sec. 21

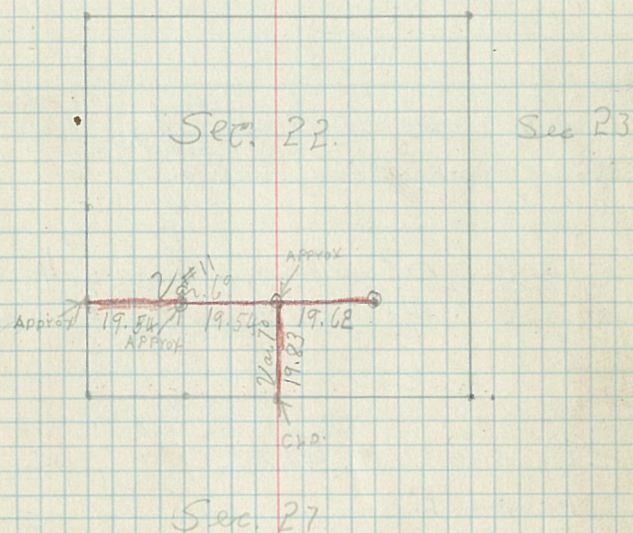
28 lbs. crossed line running N. & S.

19.62. Chs to approx $\frac{1}{4}$ Cor. #13 Sec. 22

Start 28 lbs E of $\frac{1}{4}$ cor #12 Sec. 22 to
follow old line. Run line South
Var. 7°

19.83 chs to $\frac{1}{4}$ cor Sec. 22/27 G.L.O.

Sec



Accomplished Oct. 10 1939.

SCALE - 1 in = 5 chs.

Oct. 17, 1939

Activity #3.

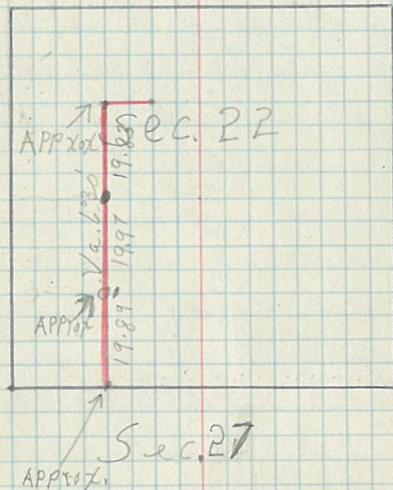
3 Start at approx $\frac{1}{2}$ cor # 2 Sec. 22
line N. Var. $6^{\circ}30'$

19.89 Chs missed $\frac{1}{2}$ cor # 11 Sec. 22 14 lbs
to right

19.97 Chs missed $\frac{1}{2}$ cor # 9, 5 lbs to left
Continue line N. Var. $6^{\circ}30'$

19.83 Chs set approx $\frac{1}{2}$ cor # 4 missed
old stalk (sq. post) 47 lbs to right

Start line E. Var. 7° run line
10 Chs E.



Accomplished Oct. 17, 1939

Oct. 18, 1939

3 Start at approx $\frac{1}{16}$ Cor #12 Sec 22

run $\frac{1}{16}$ N. Var. 7°

19.86 Chs to B.L.O.C. $\frac{1}{4}$ Cor Sec 22

B.T. N 45° W 26 links 1" Birch

B.T. S 70° E 36 lks. 9" maple

Cor. about 8" above ground

Crossed line running East + West continued
N. VAR. 7° (following old line)

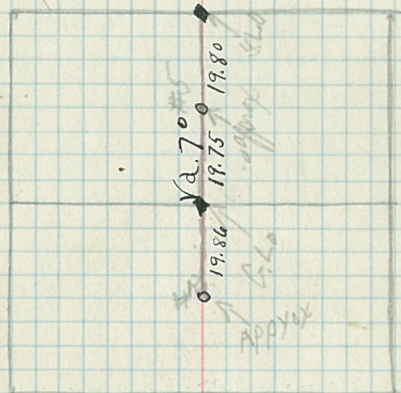
19.75 To approx $\frac{1}{16}$ #5 Sec 22 and line
continued N. VAR. 7° of running E + W.

19.80 To B.L.O. $\frac{1}{4}$ Cor Sec 22

B.T. S 30° W 19 lks 5" maple

B.T. N 26° W 20 lks 6" Birch

Cor 8" above ground



Accomplished Oct 19, 1939.