

ROAD TRAVERSE

WILSON
1914
TRAVEL BOOK
NUMBER

CCC 59

Data required.

1. Stationing & stakes
2. bearings
3. Curve data.
4. % grade at \pm
5. elev. of gnd each side of sta.
ex: 2'40'
6. soil & cover type
7. Land ties.
8. depth & location of swamps
Cedar swamp - 45' left.
9. location & size of culverts.
10. sta to sta - grading section

Aspen - a, b, c, A.

Birch - 3 " " 3

Norway 8 " " 8

white 9 " " 9

SURVEY NOTES

ROAD LOCATION
CLUB HOUSE LAKE

JUNE 2, 1939

R. T. DEFANT - locator.

Sta.	Bear Defl.	% grade	Curve Data
10		+10%	
9			
8	East 81°	-10%	$\Delta = 81^\circ$ L=166 T=100 SO=11
7	P.I.#3 81° R		R=117 E=37'
6	59° E	0%	$\Delta = 69$ T=100 L=175
5			R=146' SO=9'
+80	P.I.#2 69° R	+15%	E=310'
4			
3	S 78° E	-10%	$\Delta = 33$ R=337.6 T=100'
2			E=145
+21	P.I.#1 33° R	0%	L=194
1			SO=4'
0+00	N 69° E		

Point of beginning

left Δ Right
Survey Data

3b level-25
sandy 25

3b 0
sandy 25'

low 80' 100'

low

level-25'
3b
sandy

level-25'
3b
sandy

level-25'

level-25'

3b
sandy

3b
sandy

1-3-5 T
3-3+50 Fill
3+50-10 S.T.

3+18
18' Cul. x 24'

3b-sandy
25'
level

level-25'

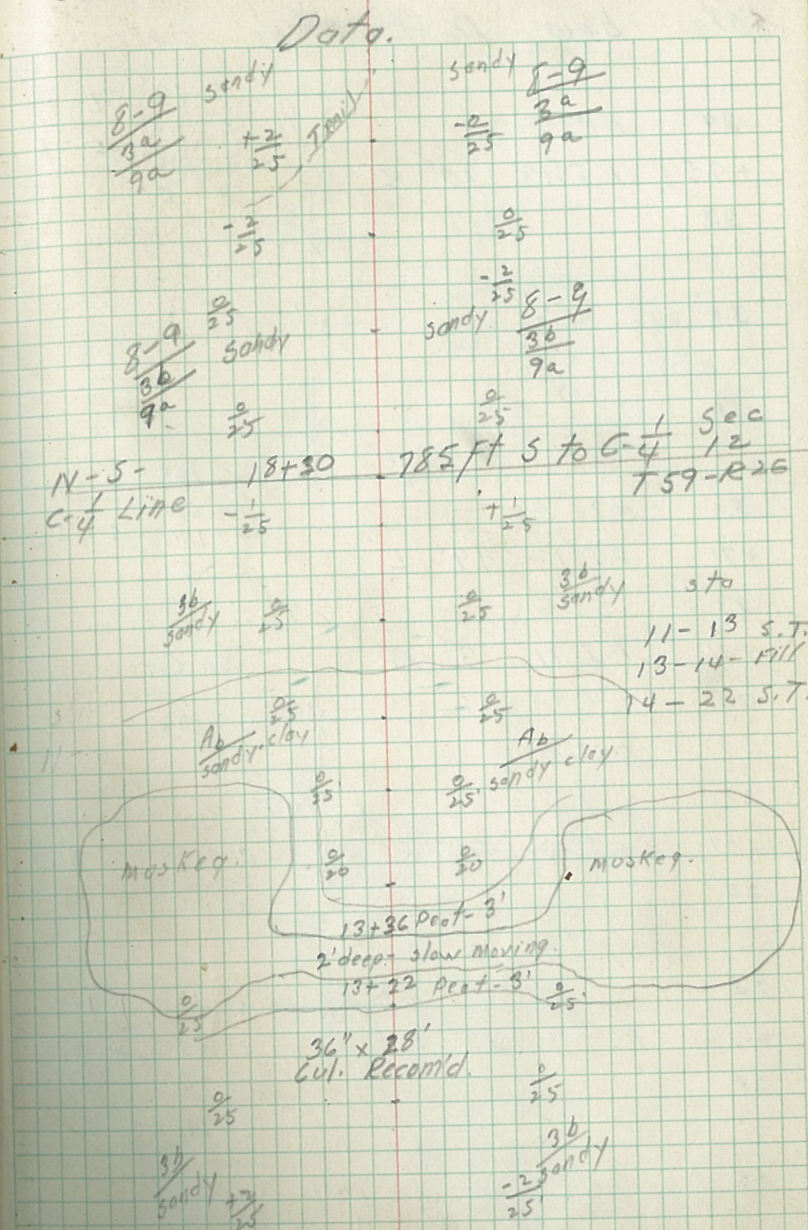
3b-sandy

level-25'

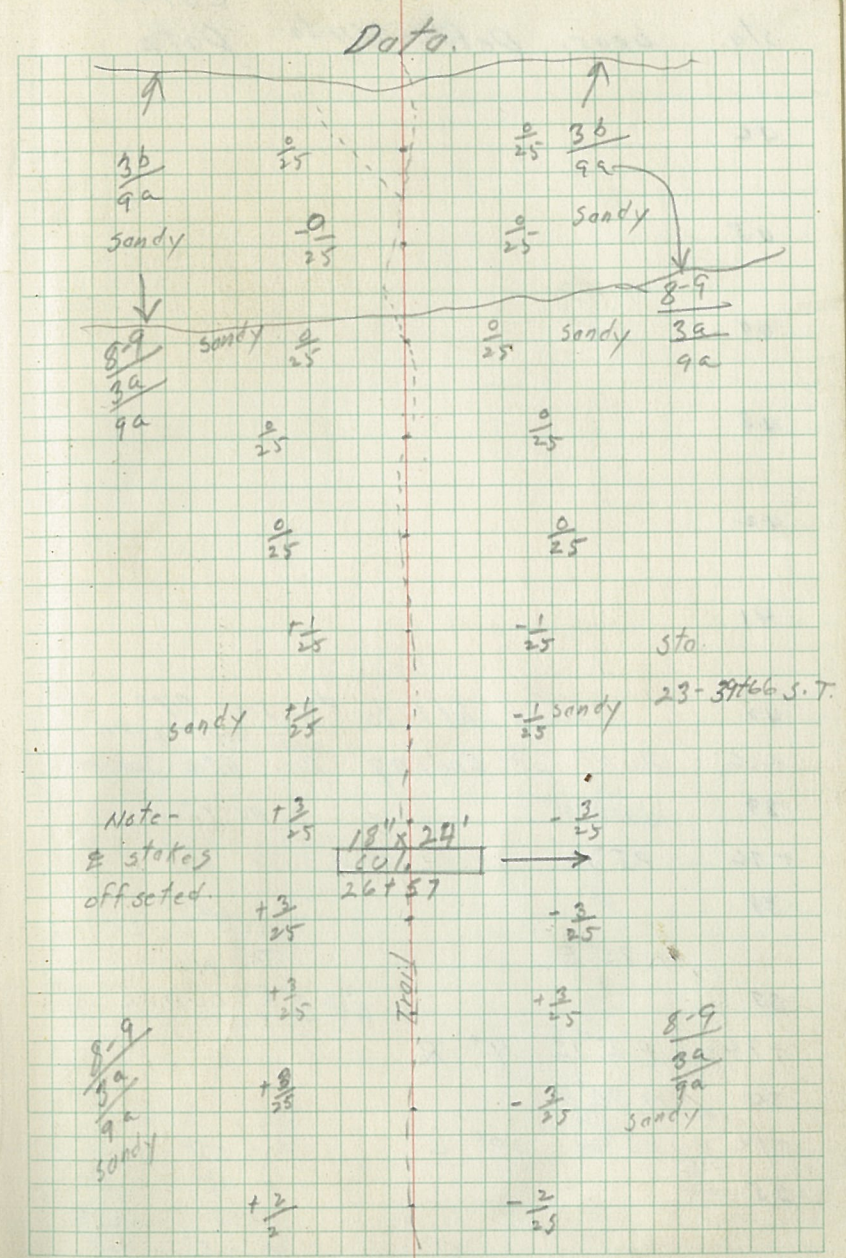
level-25'

Commencing at a pt 60 ft east of
Sec cor 1, 2, 11, & 12 - T 59° N - R 26 W
thence S 19° E, 164 ft; S 48° E, 222 ft;
S 63° E, 175 ft; S 37° E, 291 ft; S 16° E,
200 ft; S 27° E, 737 ft; S 12° E, 106 ft
to point of beginning.

Sta.	bear	Defl.	± %	Curve.
			grade	Data
22	S38°E			$\Delta = 48^\circ$ $L = 188$ $T = 100$ $R = 225'$ $50 = 6'$ $E = 21.0$
+52	P.I.#8	48° R	*	
21			-2%	
20	N86°E			$\Delta = 15^\circ$ $L = 99'$ $T = 50$ $R = 380'$ $35 = 1'$ $E = 3.3$
+86	P.I.#7	15° L	*	
19				
18	S79°E			$\Delta = 35'$ $L = 145'$ $E = 12'$ $35 = 3'$ $T = 79'$ $R = 240'$
+77	P.I.#6	35° R		
17				
	N66°E		+3%	$\Delta = 25^\circ$ $E = 11.0'$
+87	P.I.#5	25° L	*	$T = 100$ $R = 451'$ $L = 197'$ $50 = 3'$
15				
14				
13				
12	S89°E			
+33	P.I.#4	1° R		No Curve
11			0%	



sta.	bear	Defl.	grade	Curve Data
34	N88°E		0%	$\Delta = 10^\circ$ $L = 200'$ $R = 1143'$ $so = 1'$ $T = 100'$ $E = 5'$
+95	P.I.#13	10° R		
33			*	
32			-3%	
31			*	
30	N78°E			$\Delta = 19^\circ$ $L = 198'$ $R = 598'$ $so = 2'$ $T = 100'$ $E = 8'$
+71	P.I.#12	19° L		
29	S59°E		0%	
+11	P.I.#11	3° R		No Curve
28			*	
	S62°E			
27			+3%	$\Delta = 20^\circ$ $L = 198'$ $R = 507'$ $so = 3'$ $T = 100'$ $E = 10'$
+57	P.I.#10	20° R		
26			-2%	
	N82°E			
25			*	$\Delta = 42^\circ$ $L = 42'$ $R = 195'$ $so = 4'$ $T = 75'$ $E = 14'$
+72	P.I.#9	42° L		
24				
23			+2%	



Sta.	bear.	Defl.	± % grade	Curve Data
------	-------	-------	--------------	---------------

58

57

56

55

54

53

52

51

50

49

48

47

Data

sta.	bear.	Defl.	E %	Curve
------	-------	-------	-----	-------

70

69

68

67

66

65

64

63

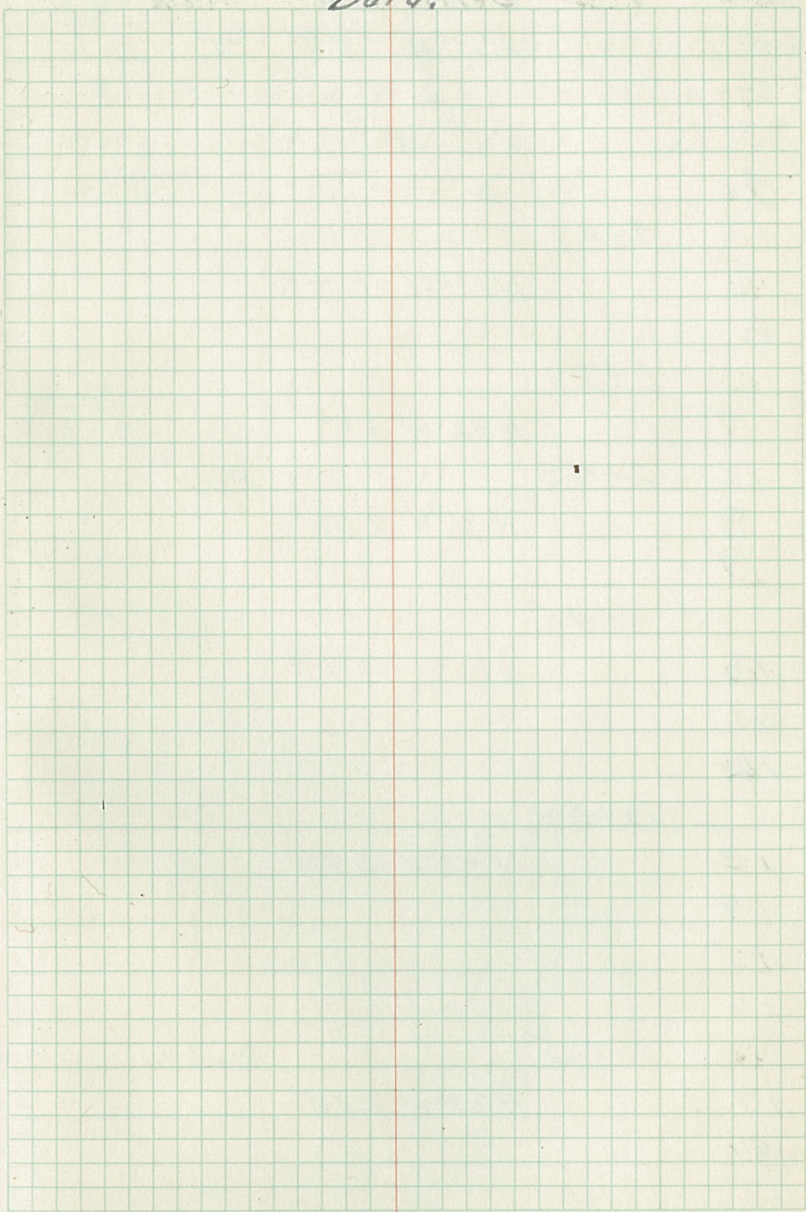
62

61

60

59

Data



Sta.	P.I	Bear.	Dist.	Remarks
1		S81°W	787'	8c.
2				
3				
4	9+87			
5		N17°W	142'	
6	6+29			
7		N72°W	114'	
8	7+43			Ab /
9		N36°W	202'	
10	9+45			
11		N70°W	344'	
12				
13	12+89			
14		N83°W	346'	
15				
16	16+35			Road bears NE
17		N29°W	230'	
18	18+65			

Traverse Notes of T.T. #604

K. Johnson 12/28/39

Start at T.W. 1/16 Cor. Secs 17+28
 60-26. Run Along W. edge of
 Hwy. N18°E 960' to
 start of T.T. #604

Sta	P.I.	Bear.	Dist.	Remarks
19		N74°W	261'	
20				
21				
	21+26			Rodds. bxs. SW
22		N70°W	1267'	
23				
24				
25				
26				
27				
28				
29				
30				
31				
32				
33				
	33+93			
34		N80°W	196'	
35				
	35+89			Rodds. bxs. NW
36		N56°W	620'	
37				
38				
39				
40				
41				

Traverse Notes TT. #604
 Johnson 12/28/39

Sta P.I. Bear Dist. Remarks

42

~~43~~

42709

43

573°W 339'

44

45

45795

46

55°W 337'

47

48

48172

49

588°W 211'

50

50463

51

N73°W 114'

51777

52

580°W 347'

53

54

55

55724

56

N50°W 223'

57

57447

58

N40°W 253'

59

Sta	P.I	Bear	Dist.	Remarks
-----	-----	------	-------	---------

60

61

N51°W 129'

61+29

62

N79°W 620'

63

64

65

66

67

6710 Culvert

67+49

68

S76°W 509'

69

70

71

72

72+58

73

S96°W 1137'

74

75

76

76+81 Culvert

77

78

79

80

81

Sta P.I. Bear Dist Remarks

82

83

83+95

84

N83°W 84'

Type change of P.I.
Hb

84+79

85

N46°W 152'

86

86+31

87

N45°W 1056'

88

89

90

91

92

93

94

95

96

96+87

Sta 96 is 76' South
of 1590 Marked gch.
S. 1/4 15+18

97

N44°W 839'

98

99

100

101

102

Sta	P.I	Bear.	Dist	Remarks
103				
109				
105				
	105+26			
106		N77°W	1144	
107				
108				108+93 Culvert
109				
110				
111				
112				112+29 Culvert
113				
114				
115				
116				
117				
	117+70			
118		N65°W	935'	
119			935'	
120				120+00 Culvert
121				
122				
	122+65			
123		S60°W	933'	
124				

Sta P.I. Bear Dist. Remarks

125

126

127

128

129

130

131

131+98

132

N82°W 198'

133

133+46

134

N66°W 733'

135

136

137

138

139

140

140+79

141

S57°W 121'

142

142+80

143

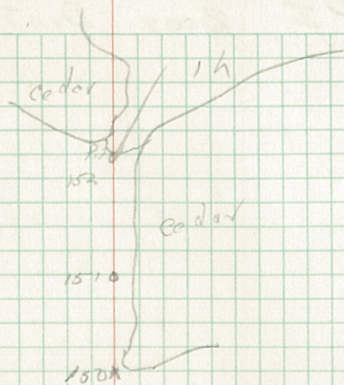
S66°W 335'

144

145

Sta. P.I. Bear. Dist. Remarks

	145+85			
146		N 80° W	174'	
147				
	147+59			
148		N 55° W	453'	
149				
150				
151				
152				
	152+12			Type 1h
153		N 28° W	739'	
154				
154				
155				
156				
157				
158				
159				
	159+51			P.I. 159+51 Cor.
160		N 55° W	218'	
161				
	161+69			
162		N 59° W	1094'	Type Ab.
163				
164				164+80 Culvert



P.I. 159+51 is N 51° E 35' of Cor. ^{11/12} 19113
T 60N R 27W.

Sta P.I. Bear. Dist. Remarks

165

166

167

168

169

170

171

172

172+13

173

N79°W 139'

173+52

174

N85°W 367'

175

176

177

177+19

178

N59°W 533'

179

180

181

182

182+52

183

N37°W 503'

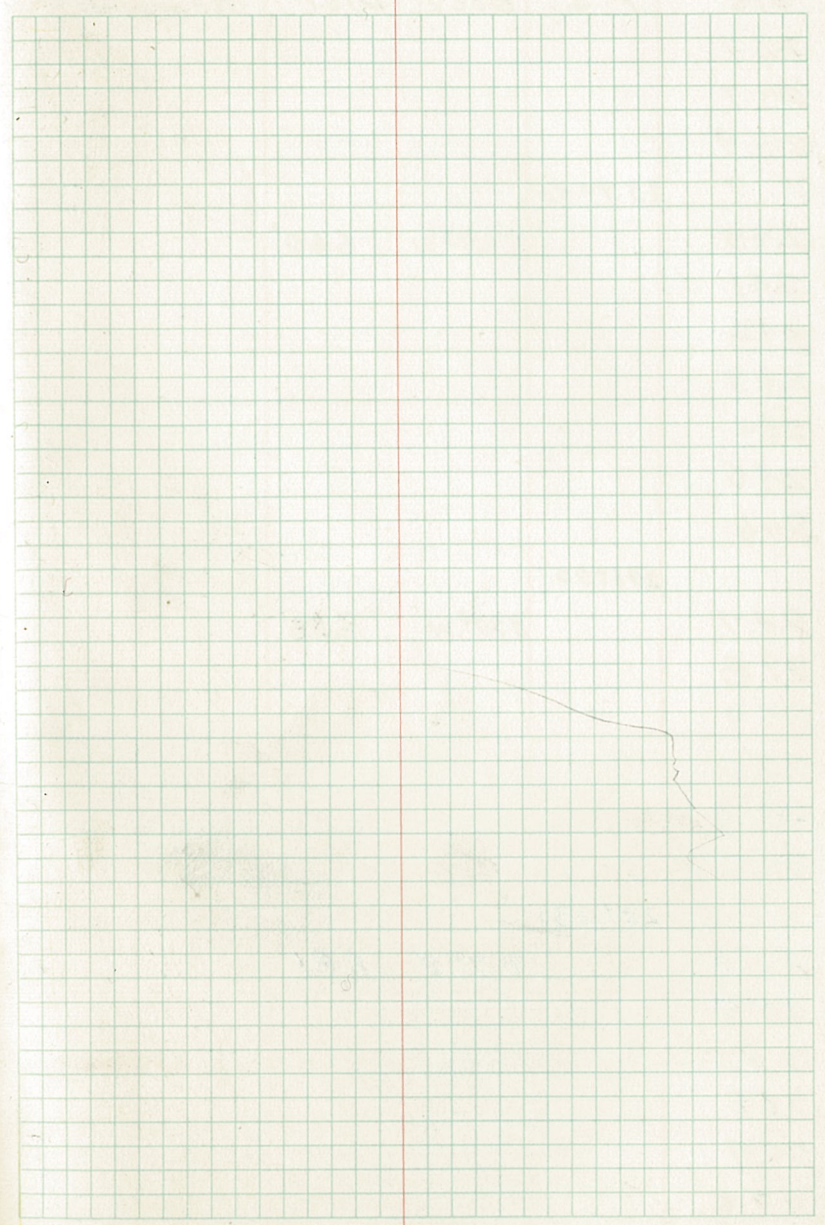
184

185

Sta.	P. I.	Bear	Dist.	Remarks
186				
187				
	187+55			
188		N78°W	265'	
189				
190				
	190+30			190+71 Culvert
191		N24°W	131'	
	191+51			
192		N75°W	196'	
193				
	193+47			193+90 Culvert
194		N68°W	85'	
	194+32			
195		S87°W	122'	
	195+59			
		N77°W	116'	
196				
	196+90			
197		N96°W	93'	12/29/39
	197+63			
198		N18°W	222'	
199				
	199+85			
200		N50°E	257'	

Sta	P. I	Bear	Dist.	Remarks
201				
202				
	202+42			
203		N86°W	88'	
	203+30			
204		N68°W	341'	
205				
206				
	206+71			
207		N39°W	172'	
208				
	208+93			
209		N42°W	209'	
210				210 Culvert
	210+52			
211		N59°W	960'	
212				
213				
214				
215				
	215+12			
216		N60°W	635'	
217				
218				
219				

Sta	P.I.	Bear	Dist	Remarks
220				
221				
	221+97			
222		N39°W	401'	
223				
224				
225				
	225+98			
		N37°W	190'	
226				
227				
	227+38			
228		S40°W	232'	
229				
	229+90			
		N72°W	211'	
230				
231				
	231+81			
232		S69°W	330'	
233				
234				
235				
	235+11			
236		N60°W	455'	



Sta	P. I.	Bear.	Dist.	Remarks
237				
238				
239				
	239+45			
240		N 22° W	660'	
241				
242				
243				
244				
245				
246				
	246+05			
247		N 21° W	626'	
248				
249				
250				
251				
252				
	252+37			
253		N 7° E	681'	
254				
255				
256				
257				
258				

Sta	P. I	Bear	Dist.	Remarks
259				
	259+12			
260		N 21° W	976'	
261				
262				
263				
264				
265				
266				
267				
268				
	268+88			Into/d. R.R. Grade
269		S 89° W	793'	
270				
271				
272				
273				
274				
275				
276				
	276+81			
277		S 71° W	249'	
278				
279				
	279+30			

Sta 279 is rock & 10' N. of 1/4 3410

Sta	P. I.	Bear.	Dist.	Remarks
280		566W	1642'	
281				
282				Type 1s
283				
284				
285				
286				
287				
288				
289				
290				
291				
292				
293				
294				
295				
	295+72			Type 1b
296		576W	428'	
297				
298				
299				
	300+00			
301		589W	544'	
302				
303				

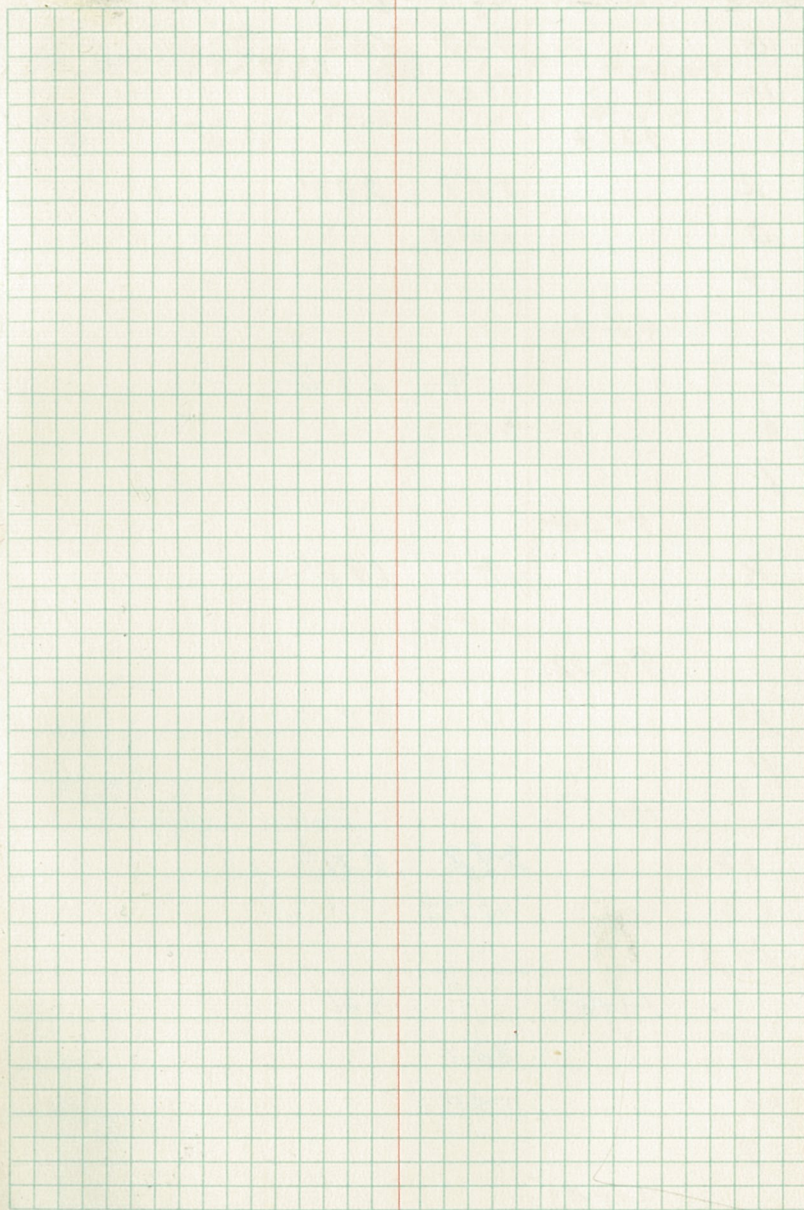
Sta. P.I. Bear. Dist. Remarks

304

305

305744

Sta 305+44 Int Hwy #6



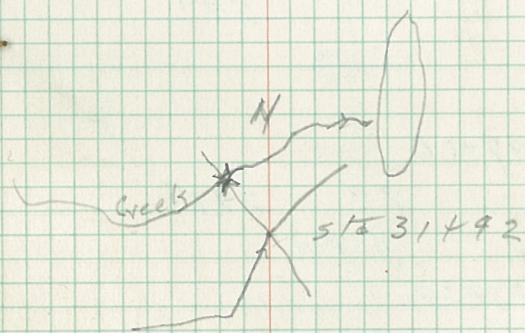
Sta	P.I.	Area	Dist.	Remarks
0		333	163'	B climb
1		N39°E		
	2+63			
2		359	278'	
3		N8°E		
4				
	4+41			
5		354	293'	
6		N13°E		
7				
	7+34			
8		4	198'	
9		N3°E		
	9+32			
10		0	221'	
11		N7°E		
	11+53			
12		342	271'	
13		N25°E		
14				
	14+29		321'	
15		325		
16		N42°E		
17				
	17+45			

Traverse of T.T. # 583
 T. A. Johnson 1/3/40 Plotted 1/15/40

1/4 Sec 13+24+15 86 130" from
 beginning of Truck Trail #583

10.35
 26.95

Sta.	P.I.	Azis.	Dist	Remarks
18		301	285'	
19		N66°E		
20	20+50			
21		339	155'	
	21+85	N28°E		Type 1st beaver flowage
22		11	267'	
23		N90°W		
24	24+52			
25		334	276'	
26		N33°E		
27	27+28			Type Ab.
28		311	165'	
	28+93	N56°E		
29		286	112'	
30		N81°E		
	30+05			
31		329	137'	
	31+42	N38°E		
32		28	390'	
33		N21°W		Culvert & creek
34	34+82			



Sta	P.I	Hgis.	Dist.	Remarks
35		2	148'	
36		N50°E		
	36+30			
37		330	219'	
38		N37°E		
	38+49			
39		352	130'	
	39+79	N35°E		
40		8	267'	
41		N10°W		
42				
	42+96			
43		321	211'	
44		N46°E		
	44+51			
45		7	247'	
46		North		
47				
	47+04			
48		29	298'	
49		N17°W		
	49+52			
50		41	122'	
	50+74	N37°W		
51		20	168'	
		N13°W		

Note N45 1/4 line runs N60°W

Sta.	P.I.	Agis.	Dist.	Remarks
52				
	52142			
53		39	292'	
54		N32°W		
55				
	55134			
		32	291'	
56		N25°W		
57				
58				
	58125			
59		29	275'	
60		N22°W		
61				
	61110			Type - Field
62		10	1950'	
63		N 3° W		
64				
65				
66				
67				
68				
69				
70				Read. bar 50K
71				

Sta.	P.I.	Agis.	Dist.	Remarks.
72				
73				
74				
75				
	75+50			type mb
76		21	231'	
77		N190W		
	77+81			
78		340	309'	
79		N270E		
80				
	80+90			
81		4	317'	
82		N30E		
83				
84				
	84+17			
85		29	214'	
86		N220W		
	86+21			
87		355	361'	
88		N130E		
89				
	89+82			
90		60	378'	
		N530W		

Sta. P.I. Azis. Dist. Remarks

91

92

93

93+00

94

10

515'

95

N30W

96

97

98

98+15

99

354

695'

100

N130E

101

102

103

104

104+60

105

0

140'

106

N7°E

106+00

107

4

417'

108

N3°E

109

110

110+17

Sta	P.F.	Azis.	Dist.	Remarks.
111		4	263'	
112		N 30° E		
	112+80			
113		5	167'	
114		N 20° E		
	114+47			Road bcs NW
115		336	208'	
116		N 31° E		
	116+55			Roads betw. E & NW.
117		354	225'	
118		N 130° E		
	118+80			
119		322	98'	
	119+72	N 45° E		
120		358	284'	
121		N 9° E		
122				
	122+62			
123		38	255'	
124		N 31° W		
125				
	125+17			
126		352	292'	
127		N 15° E		
128				

116+55 is 10' E. of Approx $\frac{1}{16}$ #1.512

Sta.	P.I.	Azimuth	Dist.	Remarks
	128+09			
129		8	212'	
130		N10°W		
	130+21			
131		370	279'	
132		N27°E		
133				
	133+00			
134		9	300	
135		N20°W		
136				
	136+00			
137		14	164'	
	137+69	N70°W		
138		45	154'	
139		N38°W		
	139+18			On to Right
140		12	127'	
	140+45	N50°W		
141		326	155'	
142		N41°E		
	142+00			Type 46-
143		21	200'	
144		N19°W		
	144+00			

Sta	P.I.	Azimuth	Dist	Remarks
145		350	200	
146		N170E		
	146+00			
147		355	240'	
148		N120E		
	148+90			
149		8	299'	
150		N10W		
151				
	151+39			
152		7	221'	
153		Nov.		
	153+60			
154		2	265'	
155		N5°E		
156				
	156+25			
157		20	182'	
158		N130W		
	158+07			
159		21	246'	
160		N140W		
	160+53			
161		5	173'	
162		N120E		

Sta.	P.I	Asimuth	Dist	Remarks
	162+26			
163		19	199'	
	163+75	N12°W		
164		397	461'	
165		N18°E		
166				Road bench. E & W
167				
168				
	168+36			
169		350	899'	
170		N17°E		
171				
172				172+77
173				
174				175+35 Culverts
175				
176				
	176+80			
177		356	201'	
178		N11°E		
	178+81			
179		22	188'	
180		N15°W		
	180+69			
181		326	281'	
		N41°E		

Sta	PI	Azimuth	Dist	Remarks
182				
183				
	183+50			
184		353	126'	
	184+76	N19°E		
185		399	299'	
186		N18°E		
187				
	187+10			187+10 Culvert
188		6	216'	
189		N1°E		
	189+20			Type 01 to R
190		598	553'	
191		N19°E		
192				
193				
194				194+29 Culvert
	194+73			
195		14	396'	
196		N7°W		
197				
198				
	198+69			
199		30	256	
200		N23°W		199+88 Culvert

Sta	P.F.	Asimuth	Dist.	Remarks
201				
202	201+25	5	205'	Sta 201+25
203		N 20° E		
	203+30			
204		12	442'	
205		N 50° W		
206				
207				
	207+92			207+92 (Cv).
208		398	453'	
209		N 19° E		
210				
211				
212				
	212+25			
213		0	212'	
214		N 7° E		
	214+37			
215		351	253'	215+00 (Cv/Vcv F)
216		N 38° E		
	216+90			
217		6	183'	
218		N 1° E		
	218+73			

Old road to NW

Sta	P.I.	Azimuth	Dist.	Remarks
219		39	211'	
220		N32°W		
	220+84			
221		36	180'	
222		N29°W		
	222+64			
223		36	236'	
224		N29°W		
225				
	225+00			
226		15	211'	
227		N8°W		228+96 Culvert
	227+11			
228		357	214'	
229		N10°E		
	229+25			
230		359	461'	
231		N8°E		
232				
233				233 bridge + creek
	233+86			
234		9	297	
235		N2°W		
236				
	236+23			

Sta	P. I	Azimuth	Dist.	Remarks
237		339	299'	
238		N28°E		
	238+72			
239		25	266'	
240		N18°W		
241				
	241+38			241+38 + Rodds
242		276	297'	
243		S89°E		
244				
	244+35			244+35 Rodds
245		349	335'	
246		N18°E		
247				
	247+70			
248		333	520	
249		N34°E		
250				
251				
252				
	252+90			
253		329	226	
254		N38°E		
255				
256				
	255+16			Join with County Road.

245+46 to 375' W. of S.M.C. Sec 25-58-25

CA

Sta	P. I.	Azimuth	Dist	Remarks
0		7	185 70'	Field in right Mb 155
1				
2				
3				
4				
5				
6				
7				
8				
9				
10				
11				
12				
13				
14				type MB 36
2996				Culvert J
29430				"
36400				type Cedar 40
36450				Culvert J
47400				type Mb
53433				Sec. Cor.
100				type 13
106+15				Cor Sec.
112+10				type Mb
130+60				type Ab

Traverse of Truck Trail # 605

Sta 0 at Cor Secs. $\frac{1011}{1514}$ 59-27

$\frac{312}{1011}$ 59-27

243-59-27 + 34435-60-27

Sta	P.I.	Azimuth	Dist.	Remarks
135170				Type A to Right ^{Left}
153100				Type A to Right
153179				Arendia rd. to East
159110				
185170	Jun. 60	3 + 1/4	S-26 + 27	-60-27

CHK

Fell 33 XT. W. of Cor. Secs ~~27/26~~ ^{27/26} ~~27/26~~ ^{27/26} -60-27

Sta.	P. I.	Azimuth	Dist.	Remarks
0		309	592'	Type AB
1		N58°E		
2				
3				
4				
5				
	5+92			
6		279	496'	
7		S87°E		
8				
9				
10				
	10+38			
11		259	512'	
12		S72°E		
13				
14				
15				
	15+50			
16		299	520'	
17		N73°E		17.42 Bridge
18				
19				
20				
	20+70			

Traverse of Truck Trail #603

Sta 0 at 1/4 Cor. Sec 26+27-60-27

Sta.	P.I.	Azimuth	Dist	Remarks
21		338	515'	
22		N29°E		
23				
24				
25				
25+85				
26		308	465'	
27		N59°E		
28				
29				
30				
30+80				
31		303	905'	
32		N64°E		
33				
34				
34+55				
35		256	875'	
36		S69°E		
37				
38				
39				
40				
41				
42				

Sta. P. I. Azimuth Dist. Remarks

43

43+30

44

238 780'

45

55.10E

Type Spr 4 1/3

46

47

Type Hb to R.

48

49

50

51

51+10

Type H b

52

286 330'

53

58.10E

54

54+40

55

309 578

56

N 58° E

57

58

59

60

60+18

Type MC

61

279 201

61+37

62

N 80° E

62+19

Full 20.5 of Post Marked 10ch. 9 to 1/4 25426

Sta.	P. I.	Azimuth	Dist	Remarks
63		257	179'	
	63+93	570°E		
64		528	383'	
65		N390E		
66				
67				
	67+96			
68		290	277'	68+92 Culvert
69		N770E		
70				
	70+53			
71		290	581'	
72		N770E		
73				
75				
76				
	76+34			
77		292	717'	
78		555°E		
79				
80				
	80+58			
81		270	880'	
82		533°E		
83				

Sta.	P. I.	Azimuth	Dist.	Remarks
84				
85				
86				
87				5700 Culvert
88				
89				
	89+38			Type Mb.
90		254	95'	
	90+33	5670E		
91		277	9717'	
92		East		
93				Type AC
94				
95				
96				
97				
98				
99				
100				
101				
102				
103				Type Mb
104				
105				
106				

Sta. Dist. Azimuth Dist Remarks

107

108

109

110

111

112

113

114

115

~~115+58 Culvert~~

116

116+85 Culvert

117

118

119

120

121

121+28 + Road 5 ft 1/4 5.25-60 27 + 30.60-25

122

123

124

125

126

125-275

Field to left

127

128

129

130

131

Sta.	P.T.	Azimuth	Dist	Remarks
132				
133				
134				
135				top of H ₂ O left
136				
137				
	137+50			Field to left
138		190	990'	
139		53°E		
140				140+00 Culvert
141				
	141+90			
142		213	1002'	
143		526°E		0 to Right
144				
145				
146				
147				
148				
149				
150				
151				
	151+92			type 76+23
152		276	6908	
153		589°E		

Sta.	P. I.	Azimuth	Dist.	Remarks
154				
155				155 Culvert
156				
157				Type O
158				
159				
160				160 + 58
161				
162				
163				
164				
165				
166				
167				
168				
169				
170				
171				
172				
173				
174				Type D
175				
176				Culvert
177				
178				

§ 20 Ch. N. of 1/4 304 31-60-26

sta P.I Azimuth Dist. Remarks

179

180

181

182

183

184

185

186

187

188

189

190

191

192

193

194

195

196

197

198

199

200

201

202

203

type Mb

201 & 20

seismic

Sta. P. I. Azimuth Dist. Remarks

204

205

206

207

208

209

210

211

212

213

214

215

216

End of Hwy # 38

CH

Sta.	P. I.	Against	Dist.	Remarks
0		269	3700'	Type 90R Motor
3+50		5820E		Culvert
8+96				20 x 7.5 (22) + 28
11+00				Type 90
20+10				Culvert
25+00				Type 100
35+00				Type 50
		37+00		
		277	7692'	
42+00		East		Type 0
42+50				Road bro. N.
51+00				Type 50
52+15				Culvert
56+10				Road bro. SE
61+50				1/4 Cor 26+27
76+25				Trail bro. 140
87+50				Type 10
90+77				bridge over creek
94+00				Type 70
102+00				C to L. Motor
		113+92		
		267	5532	
119+55		580°E		1/4 25926
122+00				1/4 RB
128+58				

Traverse of Truck Trail # 593
T. A. Johnson

59-27

Sta.	P.I.	Bearing	Dist.	Remarks
165+00	16+110			Type 0
167+00				Culvert
	169+29			
		229	492'	
	173+66	542°E		
		201	439	
	178+00	514°E		
		169	700	
182+30		523°W		Culvert
185				Junction County Rd.

Sta. P.I. Azimuth Dist. Remarks

0 11 286'

1 N40°W

2

2786

3 358° 921'

4 N9°E

5

6

7

8

9

10

11

11707

12 15 557

13 N80°W

14

15

16

16769

17 357 427'

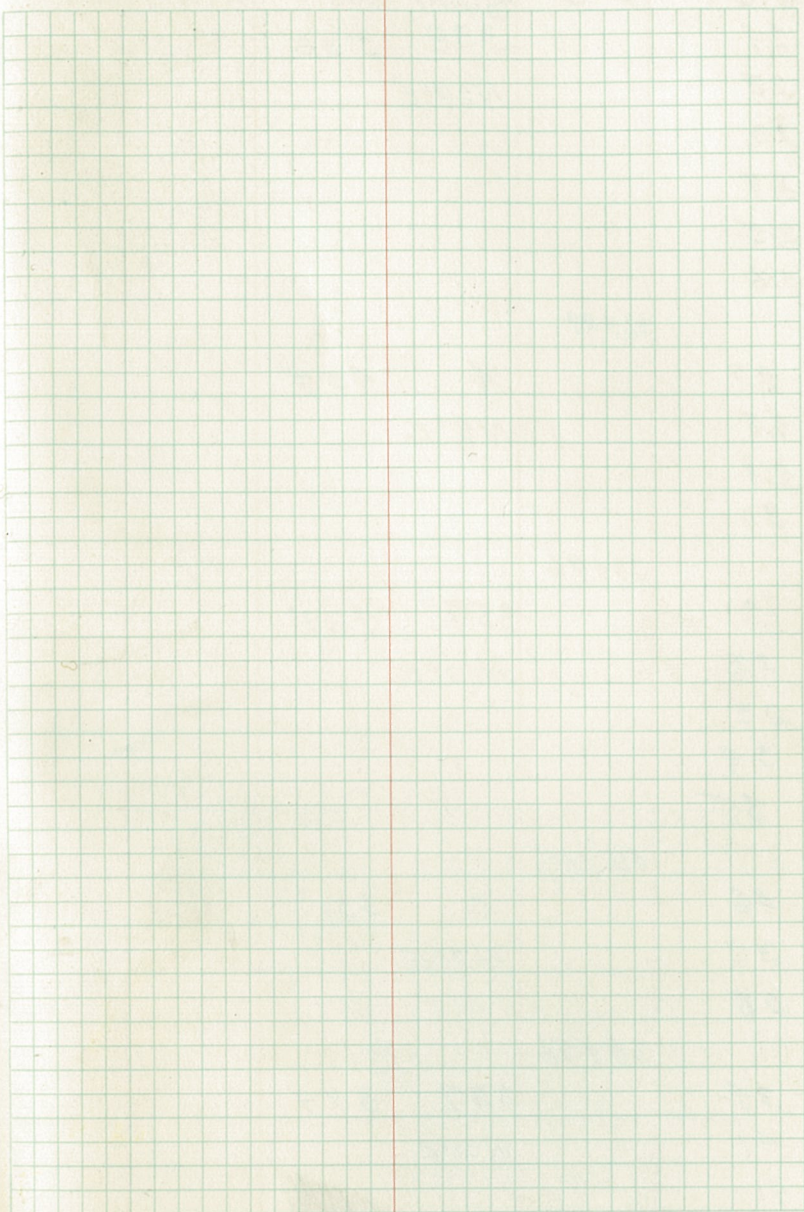
18 N10°E

19

20

20791

Traverse of Truck Trail # 580



Sta.	P.I.	Azimuth	Dist.	Remarks
21		338	538'	
22		N29°E		
23				
24				
25				
26				
	26+39			
27		4	457'	
28		N3°E		
29				
30				
	30+96			
31		359	469'	
32		N13°E		
33				
34				
35				
	35+65			
36		0	331'	
37		N17°E		
38				
	38+96			
39		337	394	
40		N30°E		
41				

Sta.	P.I.	Bearing	Dist.	Remarks
42				
	42+90			
43		350	402'	
44		N170E		
45				
46				
	46+92			
47		323	379'	
48		N440E		
49				
50				
	50+91			
51		309	257'	
52		N630E		
53				
	53+28			
54		338	546'	
55		N390E		
56				
57				
58				Road bro. West
	58+77			
59		396	413'	
60		N210E		
61				

Sta	P. I	Azimuth	Dist	Remarks
62				
	62+87			
63		302	571'	
64		N65°E		
65				
66				
67				
68				
	68+58			
69		235	856'	
70		S48°E		70+25 Road
71				
72				
73				
74				
75				
76				
77				
	77+14			
78		231	289'	
79		S46°E		
80				
	80+03			
81		192	171	
	81+74	S85°E		

645. S.E.

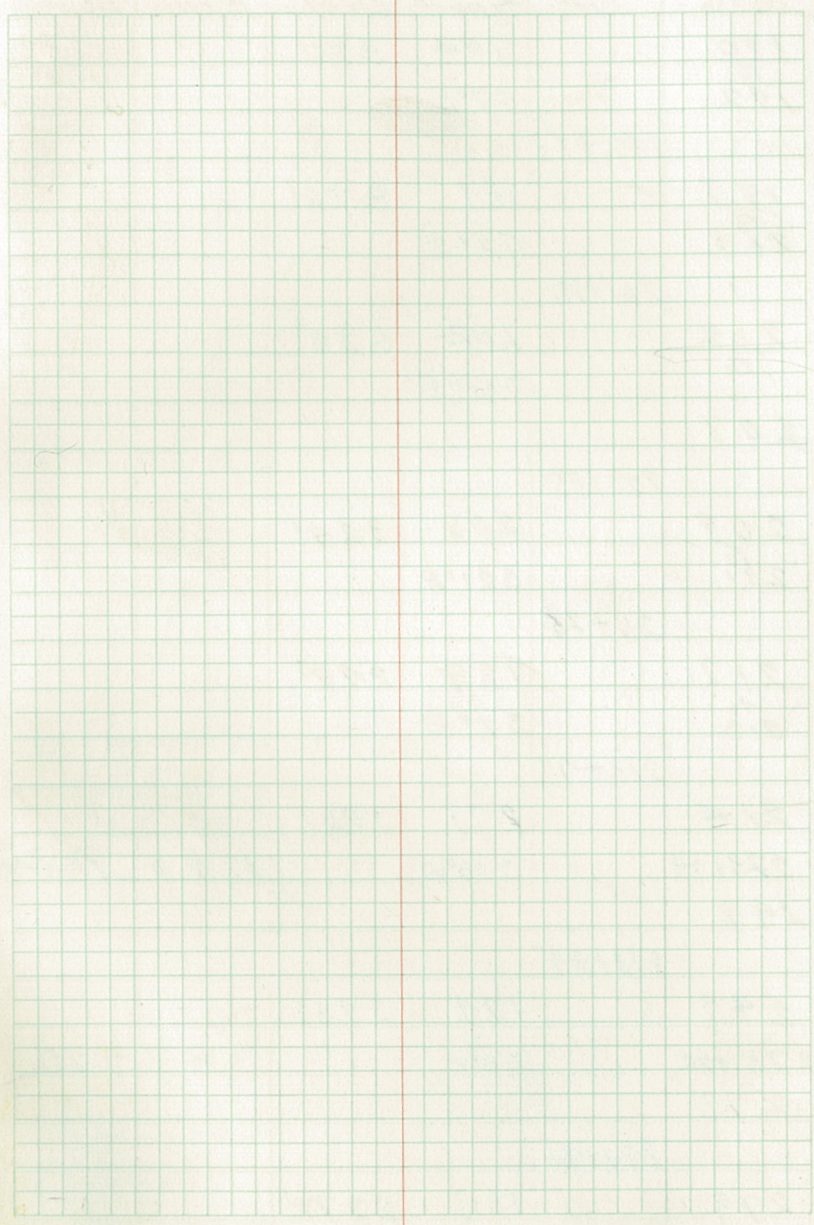
Sta	P.I	Azimuth	Dist	Remarks
82		330	1107'	
83		N37°E		
84				
85				
86				
87				
88				
89				
90				
91				
92				
	92+81			
83		300	897'	
94		N67°E		
95				
96				
97				
98				
99				
100				
101				
	101+78			
102		278	560'	
103		N89°E		
104				

Sta	P.I	Azimuth	Dist.	Remarks
105				
106				
	106+48			
107		303	107+63 is 25' south.	
108		N64°E	252'	
109				
	109+30			
110		308	491'	
111		N59°E		
112				
113				
	113+71			
114		313	544'	
115		N54°E		
116				
117				
118				
119				
	119+15			
120		298	544'	
121		N69°E		
122				
123				
124				
	124+59			

st. c. 1/2 S. 9-59-25

Sta	P.E	Azimuth	Dist.	Remarks
125		270	317'	
126		583°E		
127				
	127+76			
128		254	491'	
129		567°E		
130				
131				P.W. brs. No. v.
132				
	132+67			
133		207	455'	
134		520°E		
135				
136				
137				
	137+22			
138		232	378'	
139		545°E		
140				
	141+00			
142		265	517'	
143		578°E		
144				
145				
146				

Sta	P.I.	Asimuth	Dist.	Remarks
	146+17			
147		260	783'	
To 153		573°E		
	154+00			Road bis. Nov.
155		244	736'	
To 161		559°E		
	161+30			
162		267	959'	
To 170		580°E		
	170+89			
171		230	296'	
To 173		543°E		
	173+85			
174		261	326'	
To 177		574°E		
	177+00			
178		290	370'	
To 180		583°E		
	180+70			
181		268	455'	
To 185		581°E		
	185+25			
186		232	397'	
To 189		545°E		
	189+22			



Sta.	P.I.	Bearing	Dist.	Remarks
190 to 192		199 57°E	356'	
192+78				
193 to 201		189 52°E	892'	
201+70				
202 to		202 515°E	630'	
208				
208+100				
209 to 211		209 521°E	324'	
211+24				
212 to 213		189 52°E	249'	
213+73				
214 223+04		177 510°W	3521'	12 E of 116+18
218				
218+194				
249 275+122		179 38°W	2987'	116+18 522
278				
278+81				
279		187 SOUTH	2278'	

515

Sta P.I. Azimuth Dist Remarks

280

288761

C to R

301

301759

302

96

1320'

317

N89°W

319779

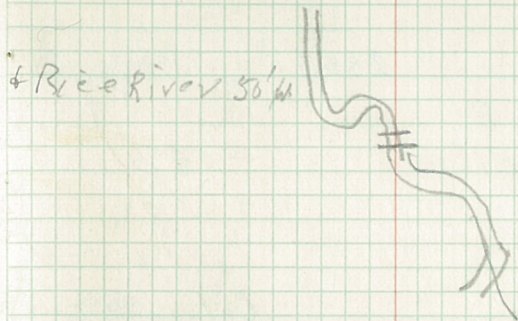
LA

Sta	P.I	Azimuth	Dist.	Remarks
0		280	2900'	Type Rb
460		N87°E		old RR grade
12700				879°/A0
	257+00			
25400		278	3982'	
27400		N89°E		Rb
32400				8c
38470				Fell 20 feet N
52400				15
55400				W. end of bridge
56400				A bwd
59400				4c
	63+82			60281: SE.
		8	2642'	
6550		N1°W		M5 to R
72400				M6 to R
77400				C. to R
83400				8c/m6 to R
	90+29			8c/m6 to R
91		99	1313'	
103		388°W		
	103+37			
		8	3509	
107		N1°W		4c
119				5c

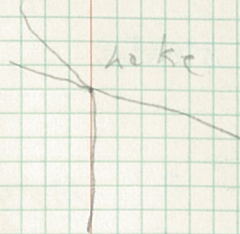
Traverse of Truck Trail # 600

Sta 0 is Azimuth 320 36' from
W 1/4 17420 - 60-26

of C.C. 5 ¹⁷⁴⁶ 60-26



Sta	P.I.	Azimuth	Dist.	Remarks
128				Tr. by SE #65 R
130				Photo
	138796			
139		80	611'	
144		N73°W		
	144+57			
		100	754'	
145		587°W		
152				
	152+11		260'	Trail by S.
		8		
155		N1°W		A+B
160				8c/Ab
164				Road by N
168+90				Culvert & creek
175+50				8c/mb
	178+12			
		284	727'	
179		N81°E		
185				
	185+39			
		301	361'	
188		N66°E	361'	2 to R
	189#0			
191		248	366'	climber
		561°E		



1st type

Sta.	P.I.	Azimuth	Dist.	Remarks
	192+66			Road brs SW
195		279	1308	66
200		N86°E		8c/m6
202+30				Culvert
	205+74			Trail brs S+E
		8	1359'	
206		N10W		Type #6
219				
	219+33			1/4 Cov. #9
239		277	13129'	7T6
245+50		East		Road brs. J.
247+30				Culvert
250				Type #6
254				8+9c to L
266+90				Culvert
267				7b
273				m6
285				Road brs. J.
290				Culvert
297				Ab to R
297+85				Cov. ³³ 10/11
303+60				60' brs S
309				m6/66
310+70				Road brs W
323+92				1/2 #5

60-26

Cov. ¹³ 1/2 60-26

8c/m6

1/2 #11

Sta	P.I	Azimuth	Dist	Remarks
330				Culvert
331+00				C. to R. 46 to L.
344+00				C. to L.
350+30				Road bis. N
	350+57			
350+70		272	2543	M.C. to L.
353		S85°E		M.C. to R.
354				Creek & bridge
360				Tb
365+70				Culvert
375+70				V45-1+72
	376+00			
377		290	374'	77b
	379+99	N77°E		
		310	1347'	
	393+41	N57°E	1347	
		293	371'	
	397+12	N74°E		
		269	1788'	
	415+00	S77°E		

End of T.I. # 600
at Scenic Park

Sta	P.I.	Azimuth	Dist	Remarks
0	0	9	3000'	Type #b
1		N20W		
2				
19+30				e to R
29+00				
	30+00			
33+00		6		R. brs. W e to R
35+00		N10E		#b to L
39+00				e to L
43+00				BC
44+00				Trail E+W
47+00				oto R #b to L
52+72				1/4 Cor. N. side of A
58+00				Rc to L
60+00				Ac to L
66+00				Ac to R
68+00				IS
72+55				bridge & creek
77+50				Boundary

649

Continuation of Tt. #600

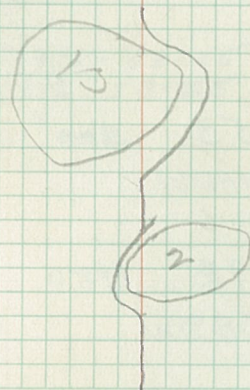
Start at 1/4 S. 989-60-26

60-26

E+W flow W

Sta	P.I	Azimuth	Dist.	Remarks
0	0	37	700'	Sec 1A D
6+00		N 30° W		AB
	7+00			
8+00		46	680'	
13+00		N 39° W		
	13+80			
14+00		336	520'	
18+00		N 31° E		
	19+00			
20+00		54	970'	
28+00		N 47° W		
	28+70			
29+00		18	530'	
33+00		N 11° W		
	34+00			
35+00		48	550'	
39+00		N 41° W		
	39+50			
70+00		7	3200'	
62+00		North		County Cor. ¹⁹¹¹ 1913
71+00				
	72+00	36	377'	
73+00		N 29° W		Type 2 to R
76+00				
	76+27			

Extension of T. # 582



Sta.	P.I.	Azimuth	Dist	Remarks
77+00		339	450'	
80+00		N28°E		
	80+77			#6 to R
81+00		7	650'	
87+00		North		
	87+27			
88+00		335	483'	is to L
92+00		N32°E		
	92+10			
93+00		51	150'	#6 to L
	93+60	N34°W		
99+00		29	500'	
98+00		N17°W		sta 98 is 90' N
	98+60			
99+00		6	4700'	
119+75		N11°E		Colvert
141+80				Colvert
145+00				
	145+60			Sta 145+60 is S.
146+00		53	300'	
148+00		N46°W		
	148+60			
149+00		98	1980	
160+90		S89°W		colvert
168+00				
	168+40			

of Cor. Secs. $\frac{39}{101} \frac{2}{11} - 57-25$

230' of Cor. $\frac{39}{312} \frac{36}{11} - 58-25$

Sta	P.I.	Azimuth	Dist.	Remarks
169+00		34	1822'	
178+90		N 27° W		Culvert
184+90				Culvert
186+00				
	186+62			
187+00		329	536'	
191+00		N 38° E		
	191+98			
192+00		7	1048'	
202+00		North		
	202+96	398	333'	
205+00		N 19° E		
205+00				
	205+79			
206+00		18	315'	
208+00		N 11° W		
	208+61			
209+00		399	960	
209+56		N 23° E		Culvert
213+00				
	213+21			
214+00		33	593'	
219+00		N 26° W		
	219+19			
220+00		7	294'	
		North		

Sta	P.I	Agimuth	Dist	Remarks
221+00				
	221+68			
222+00		347	590'	
227+00		N20°E		
	227+58			
228+00		39	380	
231+00		N32°W		
	231+38			
232+00		5	2067	
252+00		N20°E		
	252+05			County Road bvs

N+E APPROX C/4 5-27-58-25

Sta	P.I	Azimuth	Dist.	Remarks
0		95	264'	
1		N 88° W		
2	2+64			
3		44	706'	
4		N 37° W		
5				
6				
7				2 to L
8				
9	9+70			2 to R
10		66	356'	
11		N 59° W		
12				
13	13+26			
14		40	359'	
15		N 33° W		
16	16+83			43 to R
17		99	573'	
18		S 88° W		
19				
20				P/S W. 65, N

Extension of T.T. #580

sta. P.I. Azimuth Dist. Remarks

21

22

22756

23

89

674'

24

N82°W

25

26

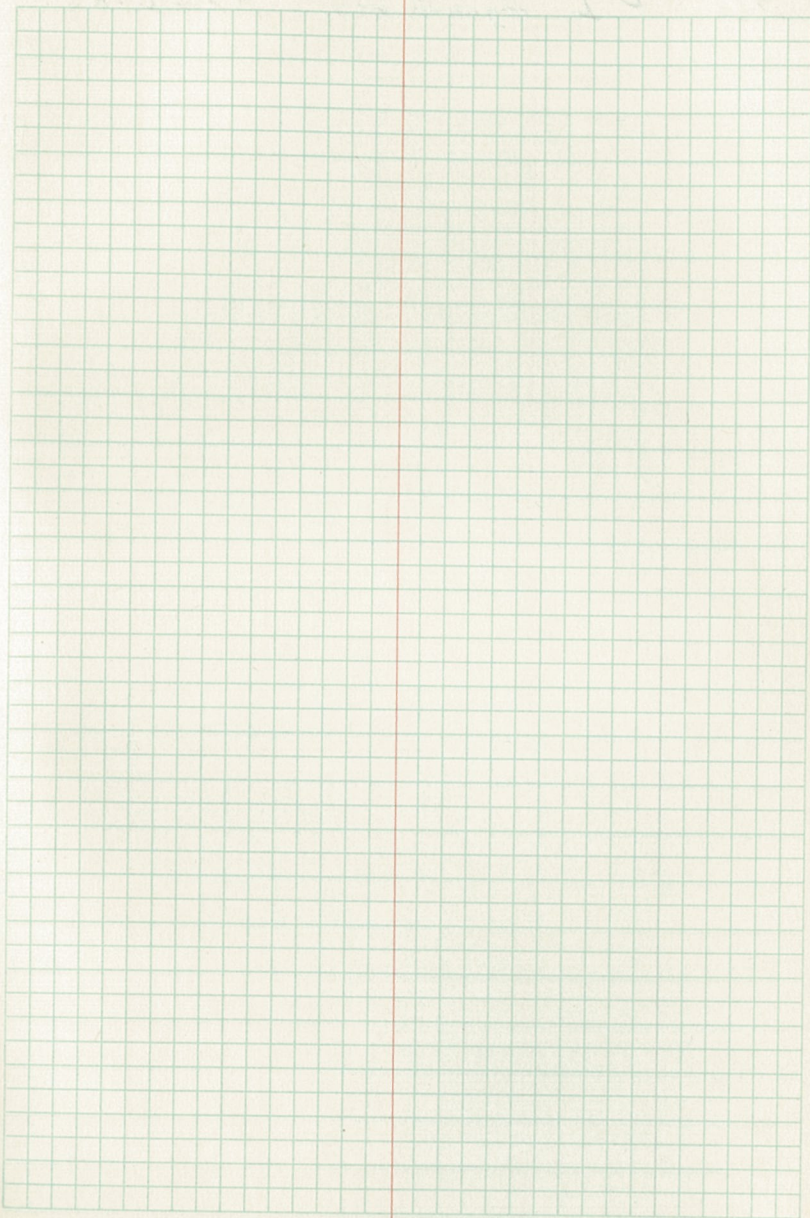
27

28

29

End of Road
at orig. Camp

Sta P.I. Azimuth Dist. Remarks



Traverse Data on F.S. Truck Trails

TT.#

604

583

605

603

593

580

600

582

this Traverse data gather from
12/1/39 to 2/1/40 by A. Johnson.