

Mining
TRANSIT BOOK

CCC 54

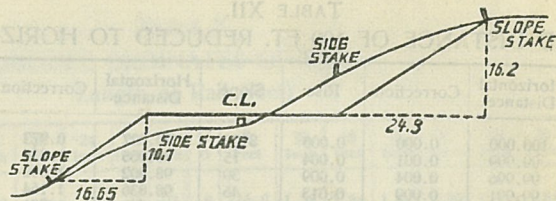
Field Survey Notes

T 60 N R 27 W

TABLES FOR EXCAVATIONS AND EMBANKMENTS.

DISTANCES FROM CENTER OF ROADWAY FOR CROSS-SECTIONING.
ROADWAY 18 FEET WIDE. SIDE SLOPES 1 TO 1.
FOR SINGLE TRACK EXCAVATION.

	0	.1	.2	.3	.4	.5	.6	.7	.8	.9	
0	9.0	9.1	9.2	9.3	9.4	9.5	9.6	9.7	9.8	9.9	0
1	10.0	10.1	10.2	10.3	10.4	10.5	10.6	10.7	10.8	10.9	1
2	11.0	11.1	11.2	11.3	11.4	11.5	11.6	11.7	11.8	11.9	2
3	12.0	12.1	12.2	12.3	12.4	12.5	12.6	12.7	12.8	12.9	3
4	13.0	13.1	13.2	13.3	13.4	13.5	13.6	13.7	13.8	13.9	4
5	14.0	14.1	14.2	14.3	14.4	14.5	14.6	14.7	14.8	14.9	5
6	15.0	15.1	15.2	15.3	15.4	15.5	15.6	15.7	15.8	15.9	6
7	16.0	16.1	16.2	16.3	16.4	16.5	16.6	16.7	16.8	16.9	7
8	17.0	17.1	17.2	17.3	17.4	17.5	17.6	17.7	17.8	17.9	8
9	18.0	18.1	18.2	18.3	18.4	18.5	18.6	18.7	18.8	18.9	9
10	19.0	19.1	19.2	19.3	19.4	19.5	19.6	19.7	19.8	19.9	10
11	20.0	20.1	20.2	20.3	20.4	20.5	20.6	20.7	20.8	20.9	11
12	21.0	21.1	21.2	21.3	21.4	21.5	21.6	21.7	21.8	21.9	12
13	22.0	22.1	22.2	22.3	22.4	22.5	22.6	22.7	22.8	22.9	13
14	23.0	23.1	23.2	23.3	23.4	23.5	23.6	23.7	23.8	23.9	14
15	24.0	24.1	24.2	24.3	24.4	24.5	24.6	24.7	24.8	24.9	15
16	25.0	25.1	25.2	25.3	25.4	25.5	25.6	25.7	25.8	25.9	16
17	26.0	26.1	26.2	26.3	26.4	26.5	26.6	26.7	26.8	26.9	17
18	27.0	27.1	27.2	27.3	27.4	27.5	27.6	27.7	27.8	27.9	18
19	28.0	28.1	28.2	28.3	28.4	28.5	28.6	28.7	28.8	28.9	19
20	29.0	29.1	29.2	29.3	29.4	29.5	29.6	29.7	29.8	29.9	20
21	30.0	30.1	30.2	30.3	30.4	30.5	30.6	30.7	30.8	30.9	21
22	31.0	31.1	31.2	31.3	31.4	31.5	31.6	31.7	31.8	31.9	22
23	32.0	32.1	32.2	32.3	32.4	32.5	32.6	32.7	32.8	32.9	23
24	33.0	33.1	33.2	33.3	33.4	33.5	33.6	33.7	33.8	33.9	24
25	34.0	34.1	34.2	34.3	34.4	34.5	34.6	34.7	34.8	34.9	25
26	35.0	35.1	35.2	35.3	35.4	35.5	35.6	35.7	35.8	35.9	26
27	36.0	36.1	36.2	36.3	36.4	36.5	36.6	36.7	36.8	36.9	27
28	37.0	37.1	37.2	37.3	37.4	37.5	37.6	37.7	37.8	37.9	28
29	38.0	38.1	38.2	38.3	38.4	38.5	38.6	38.7	38.8	38.9	29
30	39.0	39.1	39.2	39.3	39.4	39.5	39.6	39.7	39.8	39.9	30
31	40.0	40.1	40.2	40.3	40.4	40.5	40.6	40.7	40.8	40.9	31
32	41.0	41.1	41.2	41.3	41.4	41.5	41.6	41.7	41.8	41.9	32
33	42.0	42.1	42.2	42.3	42.4	42.5	42.6	42.7	42.8	42.9	33
34	43.0	43.1	43.2	43.3	43.4	43.5	43.6	43.7	43.8	43.9	34
35	44.0	44.1	44.2	44.3	44.4	44.5	44.6	44.7	44.8	44.9	35
36	45.0	45.1	45.2	45.3	45.4	45.5	45.6	45.7	45.8	45.9	36



DISTANCES FROM SIDE STAKES FOR CROSS-SECTIONING.
SLOPE 1½ TO 1. ROADWAY OF ANY WIDTH.

	0	.1	.2	.3	.4	.5	.6	.7	.8	.9	
0	0.00	0.15	0.30	0.45	0.60	0.75	0.90	1.05	1.20	1.35	0
1	1.50	1.65	1.80	1.95	2.10	2.25	2.40	2.55	2.70	2.85	1
2	3.00	3.15	3.30	3.45	3.60	3.75	3.90	4.05	4.20	4.35	2
3	4.50	4.65	4.80	4.95	5.10	5.25	5.40	5.55	5.70	5.85	3
4	6.00	6.15	6.30	6.45	6.60	6.75	6.90	7.05	7.20	7.35	4
5	7.50	7.65	7.80	7.95	8.10	8.25	8.40	8.55	8.70	8.85	5
6	9.00	9.15	9.30	9.45	9.60	9.75	9.90	10.05	10.20	10.35	6
7	10.50	10.65	10.80	10.95	11.10	11.25	11.40	11.55	11.70	11.85	7
8	12.00	12.15	12.30	12.45	12.60	12.75	12.90	13.05	13.20	13.35	8
9	13.50	13.65	13.80	13.95	14.10	14.25	14.40	14.55	14.70	14.85	9
10	15.00	15.15	15.30	15.45	15.60	15.75	15.90	16.05	16.20	16.35	10
11	16.50	16.65	16.80	16.95	17.10	17.25	17.40	17.55	17.70	17.85	11
12	18.00	18.15	18.30	18.45	18.60	18.75	18.90	19.05	19.20	19.35	12
13	19.50	19.65	19.80	19.95	20.10	20.25	20.40	20.55	20.70	20.85	13
14	21.00	21.15	21.30	21.45	21.60	21.75	21.90	22.05	22.20	22.35	14
15	22.50	22.65	22.80	22.95	23.10	23.25	23.40	23.55	23.70	23.85	15
16	24.00	24.15	24.30	24.45	24.60	24.75	24.90	25.05	25.20	25.35	16
17	25.50	25.65	25.80	25.95	26.10	26.25	26.40	26.55	26.70	26.85	17
18	27.00	27.15	27.30	27.45	27.60	27.75	27.90	28.05	28.20	28.35	18
19	28.50	28.65	28.80	28.95	29.10	29.25	29.40	29.55	29.70	29.85	19
20	30.00	30.15	30.30	30.45	30.60	30.75	30.90	31.05	31.20	31.35	20
21	31.50	31.65	31.80	31.95	32.10	32.25	32.40	32.55	32.70	32.85	21
22	33.00	33.15	33.30	33.45	33.60	33.75	33.90	34.05	34.20	34.35	22
23	34.50	34.65	34.80	34.95	35.10	35.25	35.40	35.55	35.70	35.85	23
24	36.00	36.15	36.30	36.45	36.60	36.75	36.90	37.05	37.20	37.35	24
25	37.50	37.65	37.80	37.95	38.10	38.25	38.40	38.55	38.70	38.85	25
26	39.00	39.15	39.30	39.45	39.60	39.75	39.90	40.05	40.20	40.35	26
27	40.50	40.65	40.80	40.95	41.10	41.25	41.40	41.55	41.70	41.85	27
28	42.00	42.15	42.30	42.45	42.60	42.75	42.90	43.05	43.20	43.35	28
29	43.50	43.65	43.80	43.95	44.10	44.25	44.40	44.55	44.70	44.85	29
30	45.00	45.15	45.30	45.45	45.60	45.75	45.90	46.05	46.20	46.35	30
31	46.50	46.65	46.80	46.95	47.10	47.25	47.40	47.55	47.70	47.85	31
32	48.00	48.15	48.30	48.45	48.60	48.75	48.90	49.05	49.20	49.35	32
33	49.50	49.65	49.80	49.95	50.10	50.25	50.40	50.55	50.70	50.85	33
34	51.00	51.15	51.30	51.45	51.60	51.75	51.90	52.05	52.20	52.35	34
35	52.50	52.65	52.80	52.95	53.10	53.25	53.40	53.55	53.70	53.85	35
36	54.00	54.15	54.30	54.45	54.60	54.75	54.90	55.05	55.20	55.35	36
37	55.50	55.65	55.80	55.95	56.10	56.25	56.40	56.55	56.70	56.85	37
38	57.00	57.15	57.30	57.45	57.60	57.75	57.90	58.05	58.20	58.35	38
39	58.50	58.65	58.80	58.95	59.10	59.25	59.40	59.55	59.70	59.85	39
40	60.00	60.15	60.30	60.45	60.60	60.75	60.90	61.05	61.20	61.35	40
41	61.50	61.65	61.80	61.95	62.10	62.25	62.40	62.55	62.70	62.85	41
42	63.00	63.15	63.30	63.45	63.60	63.75	63.90	64.05	64.20	64.35	42
43	64.50	64.65	64.80	64.95	65.10	65.25	65.40	65.55	65.70	65.85	43
44	66.00	66.15	66.30	66.45	66.60	66.75	66.90	67.05	67.20	67.35	44
45	67.50	67.65	67.80	67.95	68.10	68.25	68.40	68.55	68.70	68.85	45
46	69.00	69.15	69.30	69.45	69.60	69.75	69.90	70.05	70.20	70.35	46
47	70.50	70.65	70.80	70.95	71.10	71.25	71.40	71.55	71.70	71.85	47
48	72.00	72.15	72.30	72.45	72.60	72.75	72.90	73.05	73.20	73.35	48
49	73.50	73.65	73.80	73.95	74.10	74.25	74.40	74.55	74.70	74.85	49
50	75.00	75.15	75.30	75.45	75.60	75.75	75.90	76.05	76.20	76.35	50

Index

T. 60 N. R. 27 W.

Sections

Pages

1
2
3
4
9
10
11
12
13
14
15
16
21
22
23
24
25
26
27
28
33
34
35
36

1-2-3-4-5-6
7-8-9-10-11-12
13-14-15-16-17-18
19-20-21-22
23-24-25-26
27-28-29-30
31-32-33-34
35-36-37-38
39-40-41-42
43-44-45-46
47-48-49-50
51-52-53-54
55-56-57-58
59-60-61-62
63-64-65-66
67-68-69-70
71-72-73-74
75-76-77-78
79-80-81-82
83-84-85-86
87-88-89-90
91-92-93-94
95-96-97-98
99-100-101-102

Starting at Pt. S.C. 6.7. T60 P26
Going West 5 1/2 1-2-T60 P27

S.C. Swamp
9chs. High ground
20.04 S.E. Cor.
46.09 Spt. 4 Cor.
60.13 Spt. N. T60 Cor.
66.50 Rd. on old trail 7 1/2 S.
East edge of swamp
72 West " " "
80.18 Set Sec. Cor. 1-2-12-13
July 24
Going North 7 1/2 declination

8chs. Swamp
20" Set So. T60 Cor.
24" Creek bottom (very soft) depth 50" W
35.50 Spt. P.P. Grade High bank.
40chs. Spt. Edge swamp
54 1/2 High land
60" Set lat cor 9-16 sec 2 12-13 sec 1
80" " " " 8-9 sec 2 5-12 sec 1
July 30 " " " 1-8 sec 2 4-5 sec 1
114 1/2 Swamp
125.71 Set Appro. Cor. (did not see any sign of
old Pt. East & W (crown over) So W line)
Going East from lat cor. at 80chs on

20.04 Spt. lat cor. 5-6-11-12 5 1/2 (8-9 sec 2 5-12 sec 1)
39.50 Swamp
40.09 Set lat Cor. 6-7-10-11
46chs North edge of swamp 1 ch. N.
60.13 Set lat cor. 7-8-9-10.
July 31
61 Ch. East end of swamp
80.18 Set lat cor. 8-9 T60-T26 5-12 T60 P27
Going So. from lat Cor. 8-9 T60 P26
(5-12 T60 P27)
3chs. Swamp
155-20 Lake
20 Set lat cor. 12-13 sec 6 T60 P26
24-28 High ridge 28chs. Swamp
30chs. old P.P. Grade
31" creek
40" lat 4 cor
48" creek
60" lat Cor.

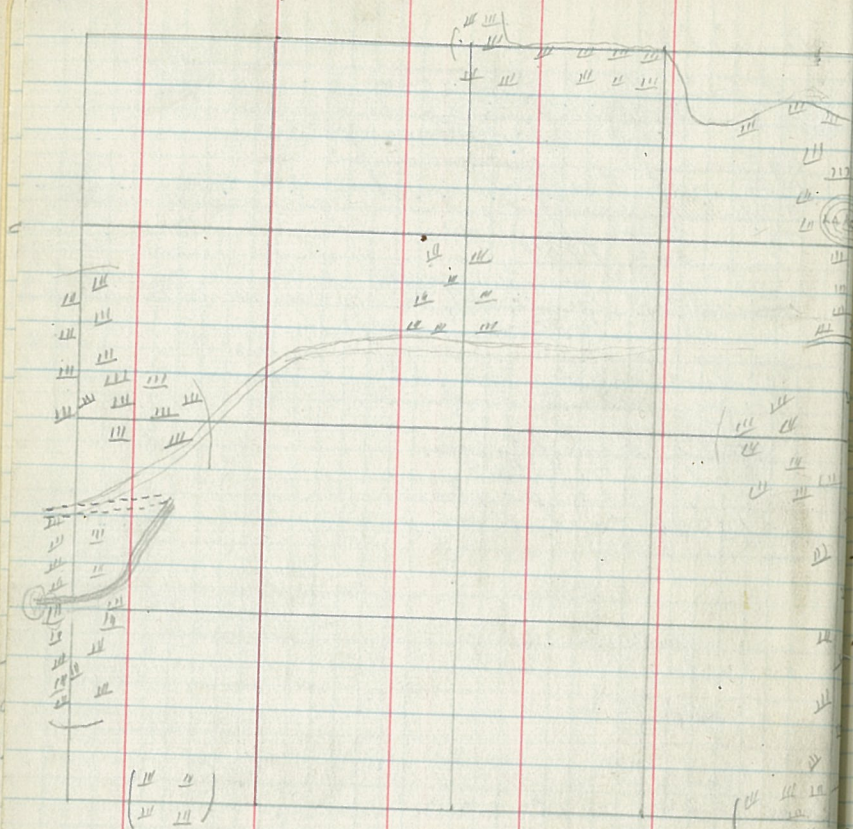
August 3

5 1/2 Going East from lat cor.
4 cor. N. edge of swamp
3chs. Creek bottom road
11 1/2 chs East of high swamp.
14.25 Old trail.
70chs. Swamp
79 1/2 cor. off line.
Aug. 24 3 / 1934
Going N from 7 cor. 6°
Point P.P. Grade 51.30
56 creek bottom
54 chs. to 60 chs. swamp.
96 swamp
N 7 cor. 80chs. 20 links W.

Note:
Start from S.E. cor.
Sec. 1 then N, N-E & S,
Closing 20 links short
4 1/2 S. East of Cor.

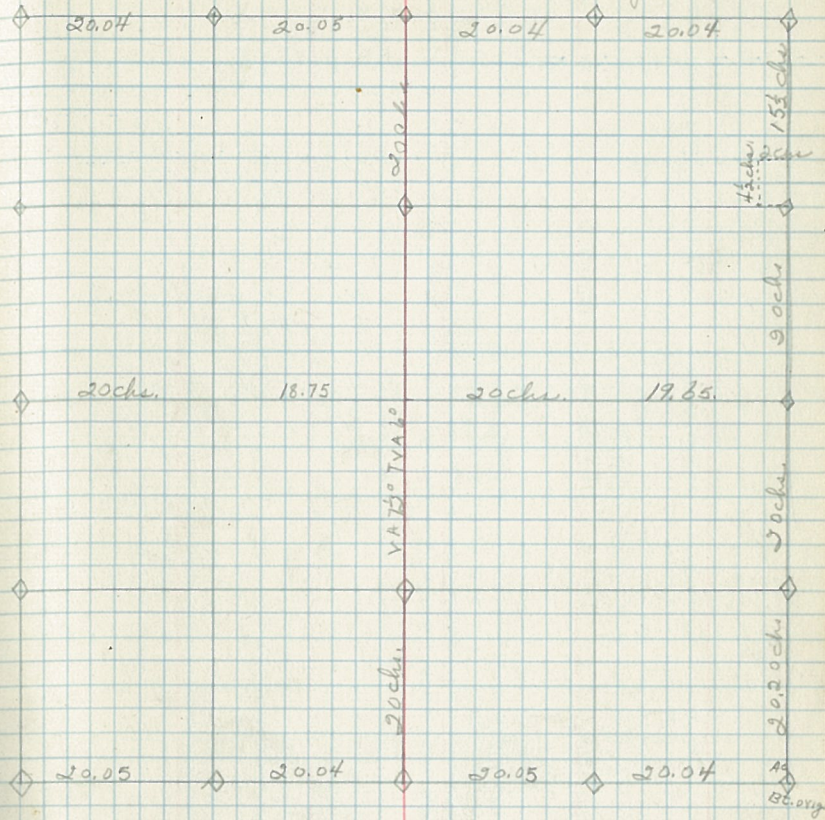
3

Sec 1



(IV II)
(II III)

Sec. 1

Bergstrom
July 23-1904 4

20.04

20.05

20.04

20.04

20chs.

18.75

20chs.

19.85

20.05

20.04

20.05

20.04

VAT'S TVALO

20chs.

153 chs.

9 chs.

30chs.

20,20chs.

10

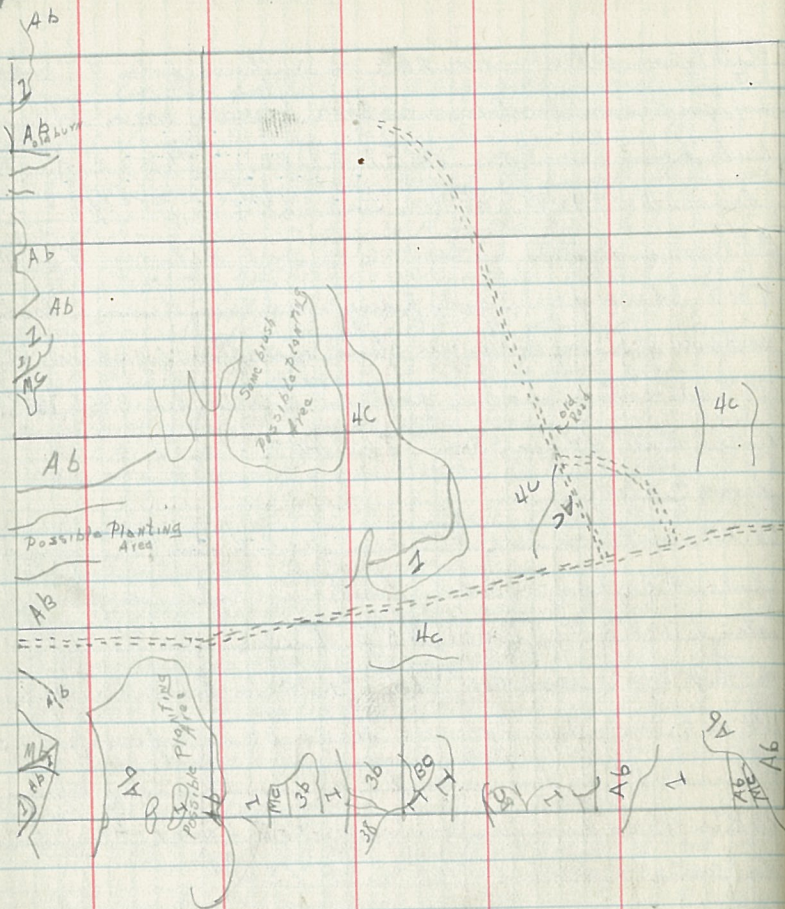
50.00

- ① SE cor of Sec 2 is poplar pole 3' high & 2 1/2" in dia. located at foot of large hill in fairly heavy brush. No B.T.s. Keel'd thus: Sec. 11, 13, 12 marker tacked to small aspen sapling.
- ② E 1/2 cor of Sec 2 between Sec 2 & 11, poplar pole 2' high & 2" in diam. Located in rather brushy area. No B.T.s. Decl. N 5° E Keel'd thus: NW 1/4 / NE 1/4 NE 1/4 / NE 1/4 of Sec. 11 & SE 1/4 / SE 1/4 SW 1/4 / SE 1/4 of Sec 2 30 ch E to Sec. Cor.
- ③ 7 cor between Sec 2 & 11 is an oak post 4' high and 3" in dia. In stand of bass wood. No B.T.s. Decl. N 5° E Keel'd: Sec 11 - NW 1/4 / NE 1/4 NE 1/4 / NW 1/4 Sec 2 - SW 1/4 / SE 1/4 SE 1/4 / SW 1/4 F.S. Marker tacked to Basswood tree.
- ④ W 1/2 cor. between Sec 2 & 11 is willow pole 3' high & 2" in dia. located in brushy area. No B.T.s. Decl. N 5° E Keel'd thus: NW 1/4 / NW 1/4 + NE 1/4 / NW 1/4 of Sec 11 & NE 1/4 / SW 1/4 + SW 1/4 / SW 1/4 of Sec 2 60 ch. from Sec. Cor.
- ⑤ SW cor of Sec 2 is located in a brushy area. Location poster is tacked to tall cedar snag. No B.T.s. Keel'd thus: Sec. 10 - NE 1/4 / NE 1/4, Sec 3 - SE 1/4 / SE 1/4, Sec 11 - NW 1/4 / NW 1/4, Sec 2 - SW 1/4 / SW 1/4
- ⑥ S 1/2 between Sec 2 & 3 is located in aspen stand 20 ch from West Haven road. No B.T.s. Decl. N 7° 30' E. Keel'd thus: SW 1/4 / SW 1/4 + NW 1/4 / SW 1/4 of Sec 2; SE 1/4 / SE 1/4 + NE 1/4 / SE 1/4 of Sec 3. 20 ch from Sec. Cor.
- ⑦ 4 cor between Sec 2 & 3 is a poplar pole 4' high & 2" in diam. located in stand of aspen saplings. It is keel'd thus: Sec 2 - NW 1/4 / SW 1/4 and SW 1/4 / NW 1/4, Sec 3 SE 1/4 / NE 1/4 + SW 1/4 / NW 1/4, 40 ch from Sec. Cor. There are no B.T.s Decl. N 7° 30' E.

- ⑧ N 1/2 cor. between Sec 2 & 3 is aspen pole 4' high & 2" in diam. located in rather brushy area. It is 60 ch from Sec. Cor. No B.T.s. Decl. N 7° 30' E Keel'd Sec 2 - NW 1/4 / NW 1/4 + SW 1/4 / NW 1/4, Sec 3 - SE 1/4 / NE 1/4 + NE 1/4 / NE 1/4
- ⑨ NW cor is located on township line between T 60 N 1/2 + T 61 N. It is a poplar pole 5' high and 3" in diam. located on N side of grassy area in stand of willow & aspen. No B.T.s. (location marker posted). Keel'd Sec. 3 & 5 T 61 N. R 2 W + Sec 2 Lot # 4 + Sec 3 Lot # 1 T 60 N R 2 W it is 121.23 ch. from S.W. Cor.
- ⑩ W 1/2 on town line between Sec 2 & Sec 35 is poplar pole 4' high & 2" in diam. located in aspen sapling stand. No B.T.s. Decl. N 5° E. Keel'd: Sec 35 SE 1/4 / SW 1/4 + SW 1/4 / SW 1/4, Sec 2 Lot # 4 + Lot # 3. 20 chs from Sec. Cor.
- ⑪ 4 cor. on town line between Sec 2 & 35 is aspen post 4' high and 3" in diam. located in small grassy area. No B.T.s. 40 ch from Sec. Cor. Decl. N 5° E. Keel'd: 7 cor. Sec 2 Lot # 2 + Lot # 3 Sec 35 - SW 1/4 / SE 1/4 + SE 1/4 / SW 1/4
- ⑫ E 1/2 cor. between Sec 2 & 35 on town line is balsam pole 3' high & 3" in dia. located in swamp. No B.T.s. Decl. N 5° E. Keel'd Sec 2 - Lot # 1 + Lot # 2 Sec. 35 - SW 1/4 / SE 1/4 + SE 1/4 / SE 1/4

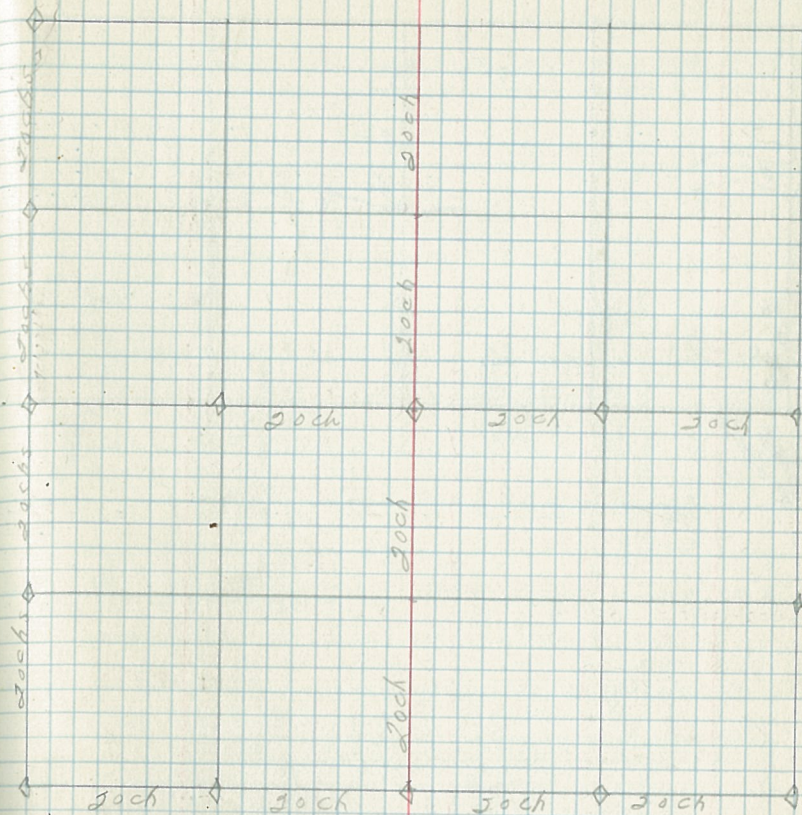
9

Sec. 2



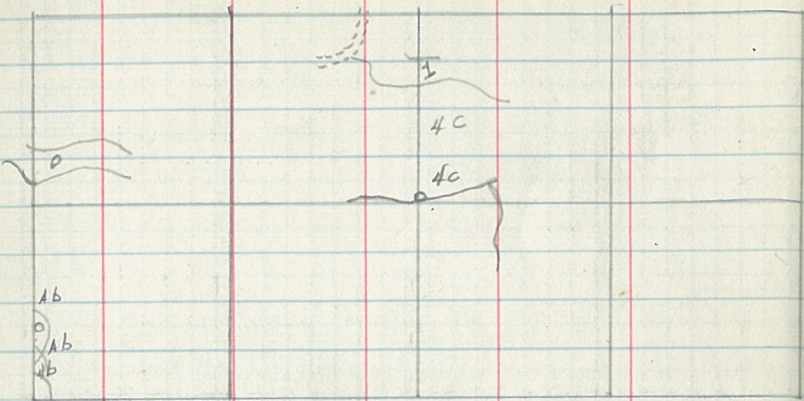
Sec. 2

10



11

Sec. 2



Sec. 2 N
of S.W. Sec. 20

Sec. 2

12

Sec. 2

Sec. 2

Sec. 2 N
of S.W. Sec. 20

Sec. 2

Sec. 2

① SW cor of Sec 3 is a cedar pole 3' high and 3" in dia. located in brushy area, 6 ch N and 2 ch W of cor as located in description of Sec 2, No B.T.s Keel'd thus. Sec 2, 1911.

② E^{1/2} cor between Sec. 3 & 10 is poplar pole 3' high & 2" in diam located in Ab stand. No B.T.s Decl. N 79° E Keel'd Sec. 3 SW^{1/4} SW^{1/4} SE^{1/4} SE^{1/4} Sec 10 NE^{1/4} NE^{1/4} NW^{1/4} NE^{1/4} (20 ch from Sec. Cor)

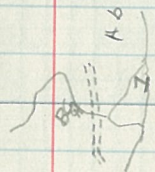
③ 7^{1/2} cor between Sec. 3 & 10 is cedar pole 4' high and 3 1/2" in dia. located in Cedar Swamp. 40 ch from Sec. Cor. No B.T.s. Decl. N 15° E, starting at 28 ch. Keel'd thus. Approx. 7^{1/2} cor NW^{1/4} NE^{1/4} & NE^{1/4} NW^{1/4} of Sec 10 and SW^{1/4} SE^{1/4} & SE^{1/4} SW^{1/4} of Sec 3. (40 ch from Sec. Cor.

④ W^{1/2} cor. between Sec. 3 & 10 is ash pole 3' high and 2" in dia located in low, brushy area. No B.T.s. The decl. is approaching normal being now N 13° E Keel'd thus. Sec 10- NE^{1/4} NW^{1/4} & NW^{1/4} NW^{1/4} Sec 3- SE^{1/4} SW^{1/4} & SW^{1/4} SW^{1/4}.
60 ch. from Sec. Cor.

15

Sec. 3

Bc



A6

A6

||

Vandermon L. Rd. Mb

T60 R27

Sec. 3

8/9/35
Dyers

16

12

11

10

9

13

14

15

16

80.00ch.

sack

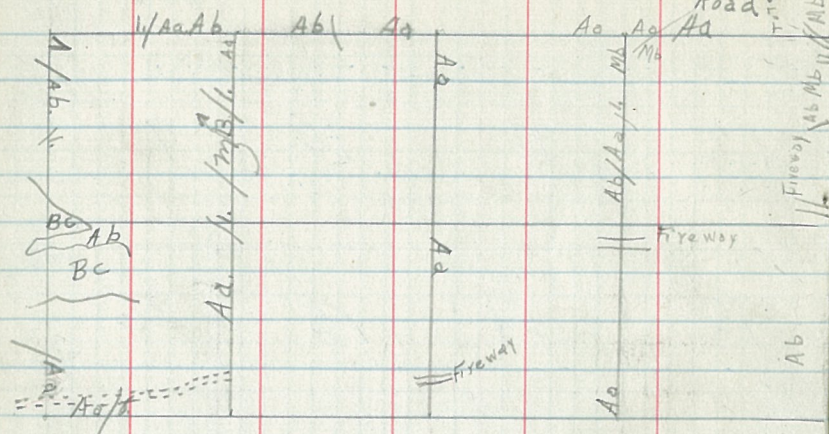
sack

sack

VA 7°

117

Sec. 3

Tote
Road

T60N R27

Sec. 3

8/9

35

Byers

18

$Ya 6^{\circ}15'$ 20.00ch	$Ya 6^{\circ}15'$ 20.00ch	$Ya 6^{\circ}15'$ 20.00ch	$Ya 6^{\circ}15'$ 20.00ch
4	3	2	1
20ch. $Tr. 7^{\circ}30'$ $Ya 7^{\circ}15' min$	20ch. $Tr. 7^{\circ}30'$ $Ya 7^{\circ}15' min$	20ch. $Tr. 7^{\circ}30'$ $Ya 7^{\circ}15' min$	20ch. $Tr. 7^{\circ}30'$ $Ya 7^{\circ}15' min$
5	6	7	8
$Ya 6^{\circ}15'$ 20.00ch	20ch. $Tr. 7^{\circ}30'$ $Ya 6^{\circ}15' min$	20ch. $Tr. 7^{\circ}30'$ $Ya 6^{\circ}15' min$	20ch. $Tr. 7^{\circ}30'$ $Ya 6^{\circ}15' min$

Aug 24 Going North from Sec. Cor. 10-11-14-15
 U.S. F.S. Cor. High ground ^{7 1/2}

18 ch. swamp
 20 " "
 29.35" Lake
 42.87 N. side of lake.
 60. Chs. set N. to cor.
 70 " Highland

Aug 28. Going North from Sec. Cor. 9-10-15-16
 Dec 1. 80

Cor. V.S.F.S.
 20.100 chs. set S. to cor.
 20 chs. swamp
 40.20" set to cor.
 51 " high land
 56 " E of rd. Survey. Iron line 2° decl.
 60.30" set N. to cor. (Walter O. Kane)
 69 chs. Survey line N7S. (Survey C. from 1/4 cor 9-10)
 64 " Swamp (set to swamp at 28 chs.)
 76 " R.R. clearing R.O.W. Enter " " 32 "
 80.76" set to cor. (set " " 34 "
 Going N. from 1/4 cor. sec 10-11-15-16
 17 chs. to 20 Ravine
 20-40-60 set cor.
 72 chs. swamp
 78.88 1/4 cor. 5 3 links S.W. 1/2 cor. 10 links N. to 05 chs. N.

Note!

Local attractions in
 this section.
 1/4 line from 1/4 cor. sec. 9 & 10 to
 center line 10.
 incorrect because of local attraction.

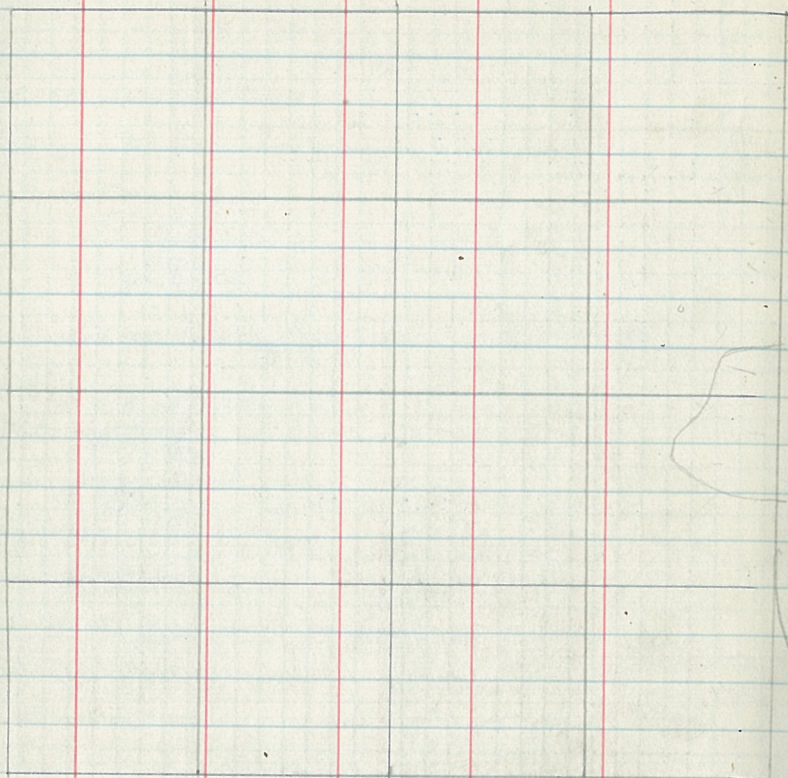
Starting from Sec. Cor. 10-11-15-14 T60 Post

Aug 22. Going N. from " "
 1/4 cor. High land.
 10 chs. swamp
 13 " "
 20 " set to cor. Edge of swamp.
 33 " high land
 30 " set 1/4 cor

Aug 23
 60 chs. set N. to cor.
 80 " set cor. set 1 sur. 15 links Sec 10 on west
 Continued to P.M. Cor 11 chs. 25 links.

29

Sec. 10



0.124

30 ch.

30 ch.

20 ch.

30 ch.

30 ch. 30 ch. 30 ch. 30 ch. 30 ch. 30 ch. 30 ch. 30 ch. 30 ch. 30 ch.

Sec. 10

30

30 ch. 7.85 / 1354 17.11

30 ch.

31

Sec 11

Starting at Sec. Cor. 13-14 11-12 T60
 Aug. 21 Going west on 7th High bank.
 Cor.

8-12 N Edge of Swamp

19th Swamp19.85 Original 1st cor. 46 links So.

22 chs. High bank

39.50 old B.T. fallen down 60 links So.

40 chs. set 1st cor Swamp.

Aug. 22

42 chs. Highland.

60 chs. set 2nd cor. Edge of Swamp.76th Highland80th set Sec. Cor. 15-16 11-14 T60 P27Sept. 12 Going North from 1st cor Sec 11-14 Dec 121st cor in Swamp1st ch. high ground.

set corners at 20 chs. 40 chs. 60 chs. 80 chs.

Sept 13. Going North from Sec Cor. 11-12 13-14 Dec 1 7th

set cor. of 20 chs. 40 chs. 60 chs.

50 chs. Swamp.

Sept 14. Going west from 1st cor. sec 11-12 Dec 1 7th

90 chs. set 40 cor.

23 chs. Lake 29 chs. W edge of Lake

40.28 Center section Cor

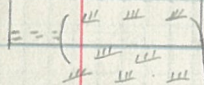
54 chs. Swamp 42-46 swamp

59.38 Lake

Sec. 11

32

Lake



1938

20.28

50 chs.

← 75° →

50 chs.

50 chs.

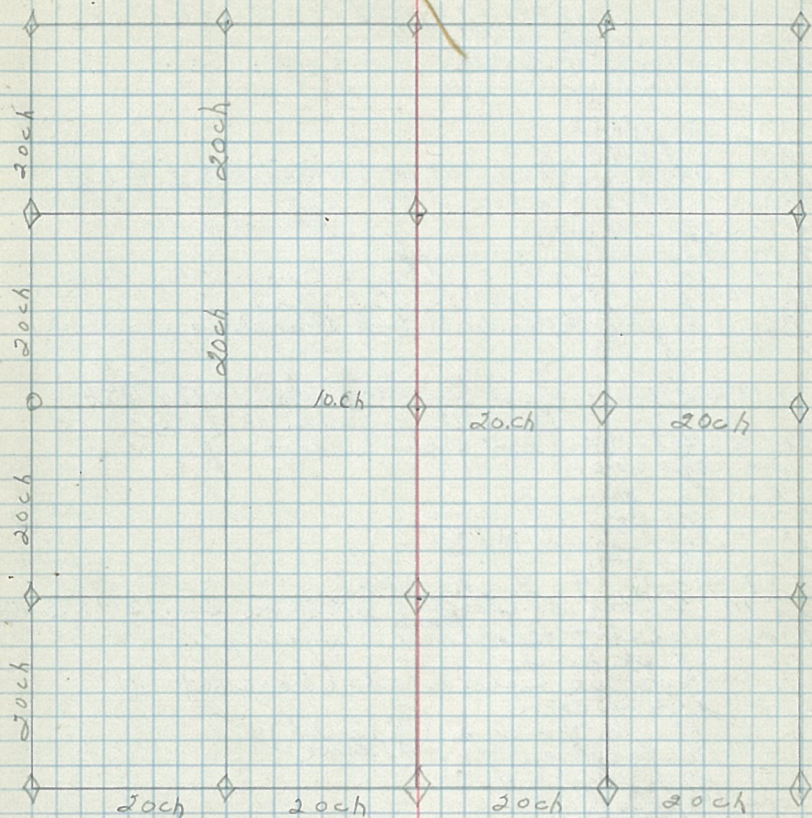
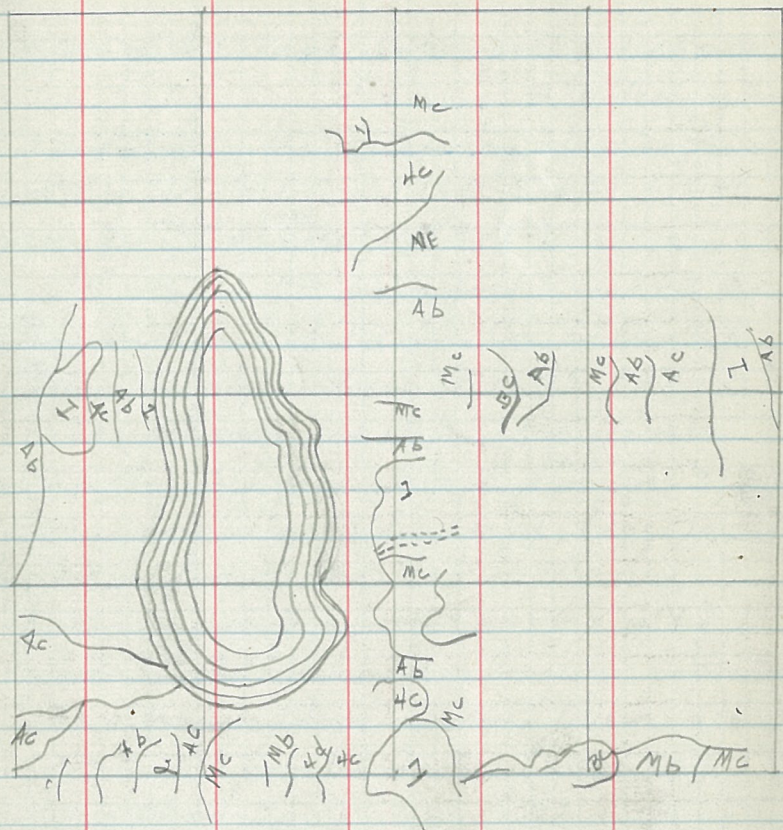
50 chs.

50 chs.

50 chs.

50 chs.

- Q.S.W. cor of Sec 7 as a poplar pole 3' high and 3" in dia. Keel'd thus: Sec 11, 12, 13, 14. No bearing trees.
- ① S⁷⁶ cor between Sec 11+12 is toy alder sapling 4' high & 2" in dia. Keel'd. Sec. 11+12. S⁷⁶ 20 ch N. of Sec. Cor. No B.T.s. (Decl. N 7° 30' E)
- ② ⁷ cor. between Sec 11+12 - poplar post 3' high & 2" dia. Keel'd: Sec 11+12. 40 ch. No Sec. Cor. is located in Aspen sapling stand (Decl N 7° 30' E)
- ③ N⁷⁶ cor. between Sec. 11+12: theoretically located about 20 ft. from w. bank of lake Decl. N 7° 30' E
- ④ N.W. cor is pole 3' high & 3" dia Keel'd: (Sec. 12, 11, 13 located at foot of large hill in clearing.
- ⑤ S.E. cor is acquisition post 2¹/₂' high & 3" in dia. It is Keel'd: 7, 18, 12, 13. Is located on Range line No B.T.s. Marked.
- ⑥ E⁷⁶ cor is ash pole 3' high & 3" in dia. Keel'd: E⁷⁶ Sec. 12+13. 20 ch from the Sec. Cor. (Decl. N 5° E.)
- ⑦ ⁷ cor. is poplar pole 3' high & 2" dia. Located in clearing between Sec. 12+13. No B.T.s. Keel'd: ⁷ cor. 40 ch from Sec. Cor. Decl. (N 5° E)
- ⑧ W⁷⁶ cor between Sec. 12+13 is pole 3' high & 2" in dia. Is located in a heavy stand of mixed hardwood mostly white spruce. Is Keel'd. W⁷⁶ Sec 12+13 60 ch. W of Sec. Cor. (Decl. (N 5° E) No B.T.s.)



U.S.F.S. 6ds. on Highland marked S. 12 S13 T60 R27
 Aug. 6 ^{Leaving 30 75}
 2 chs. Very low land
 4 " Old trail
 8 " Highland
 10 " Old trail
 17.30 U.S.F.S. Cor. 45 links West. Corrected line.
 28 chs. old trail along S.E.
 41.18" 1/4 cor. apprx. corrected line.
 57.50" Old trail swamp
 60.77 U.S.F.S. 46 Cor. 65 links E. Corrected line ahead.
 85.50 Old trail on White road.
 80.65 Original Cor. 65 links E. Discription on page 1

Aug 8, 1934 Going West from 1/4 cor. Sec. 18 T60 R26

4 cor. to 2 chs. ^{Deed 70} Sec. 13 T60 R27
 Very low ground swamp.

30 chs. set cor.

24 chs. Low ground

40 " set cor.

51.50" Foot trail N. & S.

60 " set cor.

79.87 1/4 cor. 90 links north

Aug. 10 Going So. from U.S.F.S. Cor. Sec. 12-13 T60 R27

4 cor. Cabot & Balsam Swamps.

6 chs. High land

6-16 Burned over area (barren)

30.33" set 40 cor.

25 " High ground (Burned)

40.46" Center pt. Cor. on line

60.69" set 40 cor.

79 chs. Balsam Lake

Aug. 11 Starting at orig. Sec. Cor.

Spring W. of 70 18-19 T60 R26

13-24 T60 R27

Cor. spruce swamp

12 chs. fence 1/2 N., runs on 8° to lake

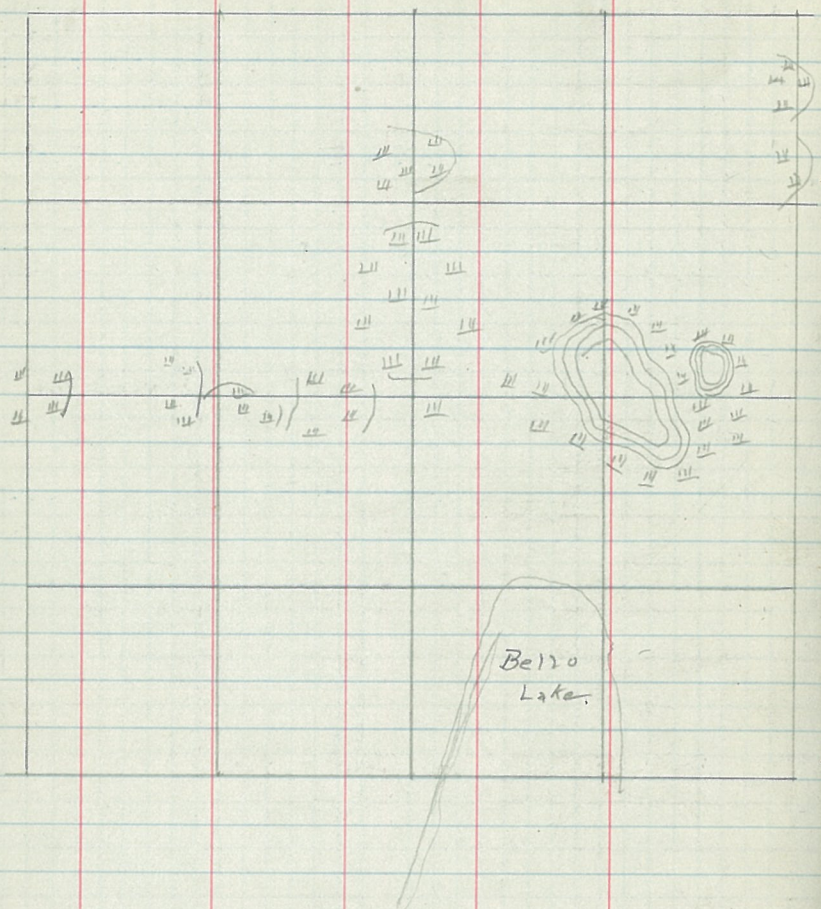
18 " Cross to N. side of fence

20 " Set top cor. 1/4 M. of fence.

22 " Balsam Lake.

45

Sec 14

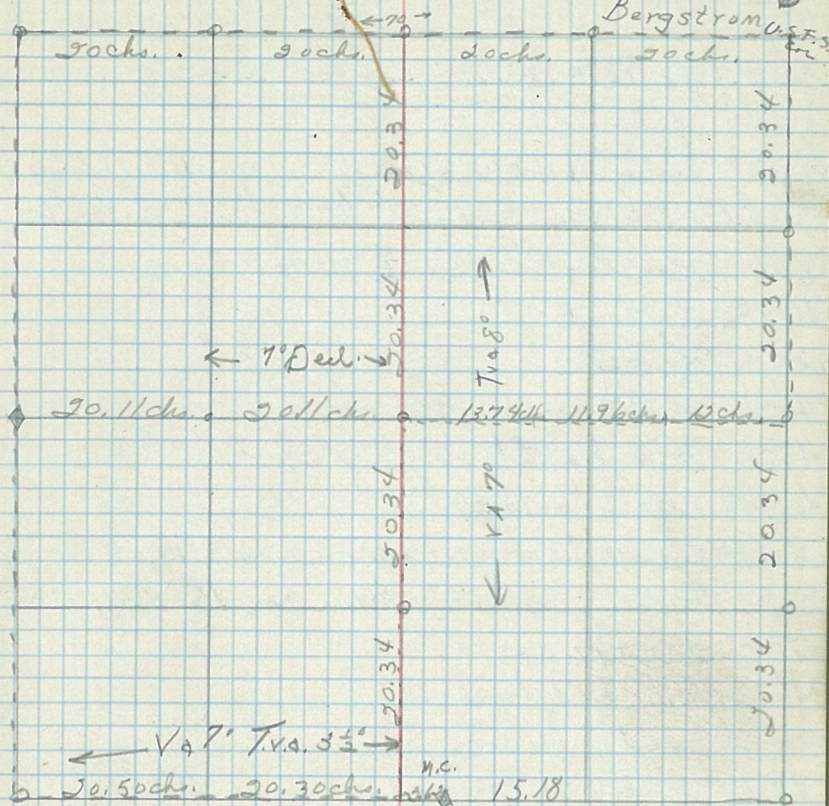


Sec. 14

T60. P27W.

410

Bergstrom USFS



Sochs. Sochs. Sochs. Sochs.

20.34

20.34

20.34

20.34

← 7' Del. →

T1880

20.11 chs. 20.11 chs. 13744 119 chs. 12 chs.

20.34

20.34

20.34

20.34

← 49' Tra. 33° →

n.c.

20.50 chs. 20.30 chs. 15.18

Tch. 911
No. 60 of line

47 T60N
R27W

Sec 15

Sec. 15

48

Sept. 4/34

Long south from cor. 9-10-15-16 T60 R27
Dec. 7°

30 ch. set to cor.

32.35 Old Rd. E + W.

37.14 1/2 cor. Original cor. B. T. 8 links W.

39-42 Swamp

60 ch. set to cor.

77.78 sec. cor. 15-16-21-22 Original cor B. T. 17 links N61W

Sept. 6 (70) Going east from cor. 15-16-21-22
59 links W of line

8.71 Old logging road NW + S. E.

10-12 Swamp.

12-50.79 Lake

40 ch. set 4 cor.

46 ch. Hit South edge of lake.

60 ch. set to cor.

80.56 ch set sec. cor. - 22-23, 14, 15

Sept. 7 going south from cor 15-14-11-10

50 ch. set to cor.

41.30 ch. to all to cor.

60 " set 5 to cor.

79.70 set 1/2 cor. (moved cor. set. 9/6/34)

Sept. 9 Going east (4°) from 4 cor. W sec 15

11.70-25.9 (Lake)

39.77 ch. set 4 cor. middle sec. 10 - B. T. 16 links
S 86° W

42.46-55.70 Lake

60 ch. set 4 cor (78-9-10)

79.54 to 4 cor. 19 links S.

Sept. 11 Going So. from 4 cor. 10-15 Dec. 7°

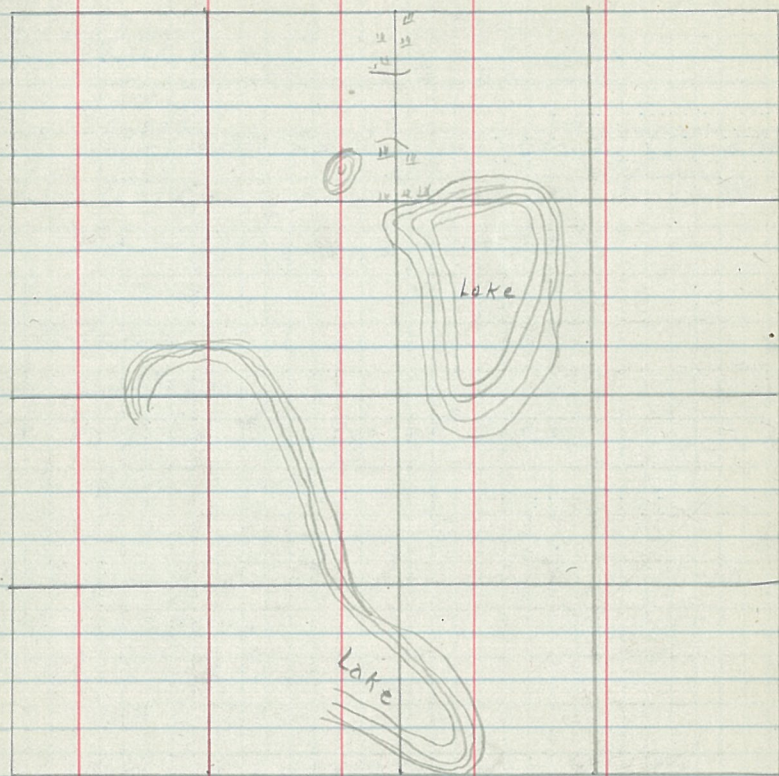
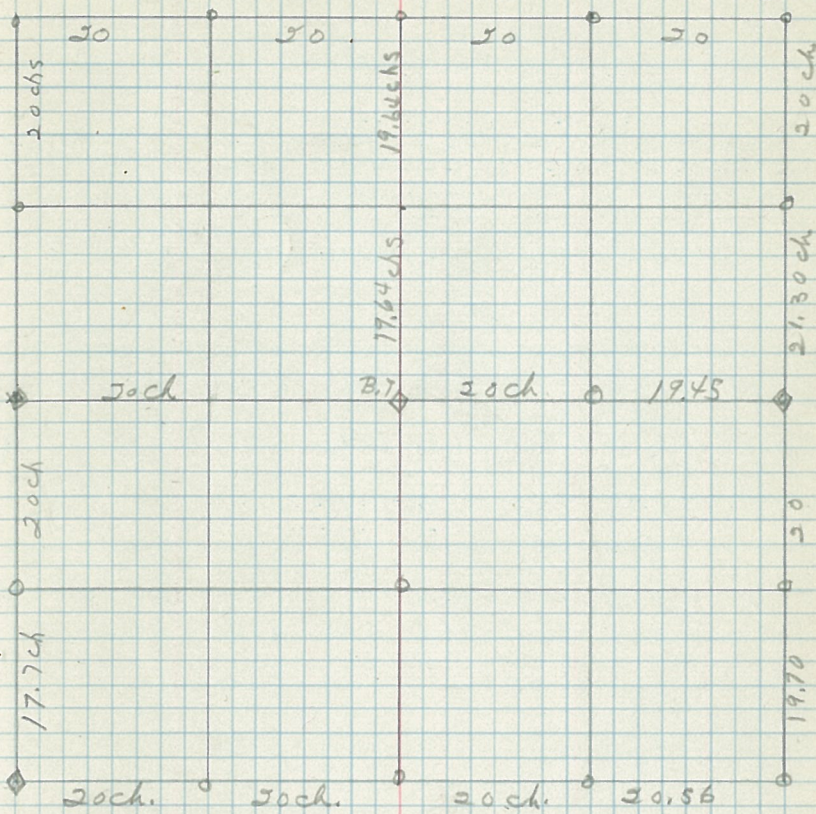
1/2 ch. swamp 20.50 N. W cor. lake 65.5 lake

5 " Highland 24.97 Edge lake 73.83 So.

12 " swamp 39.55 center sec. side lake

49

Sec. 15

Sec. 15. T60R27W.
Stephens. 50

59

Sec 22 T60N R27W

Oct. 5 1934 Going S. from Sec. Cor. 15-16-21-22

Sec. Cor. squared tree B.T. 17 links N.W.
Dec. 7th

90 ch. Set N 1/4 16 cor.

30.80" Lake

25.30" So. edge of lake Swamp

40 " Set 1/4 cor.

46 " So. edge of swamp

59.50" Aerial photo Rd.

60 " Set. so to cor.

80 " Set Sec. Cor. 21-22-26-27

Going East from Sec Cor. 21-22-26-27
Dec. 17th

Oct. 8 Aerial photo Rd. N. W. S. E.

16-18 Swamp

30 ch. Set N 1/4 16 cor

39.50 Lake

Sec 22

60

61

Sec 22

Lake

Hessling Lodge Rd.

Lake

62

Sec. 22

62

By

2000

o

2000

o

2000

- 1/2 72 -

o 2000

o 2000 o 19,5000