

T59M R27W

FIELD BOOK
T59M R27W

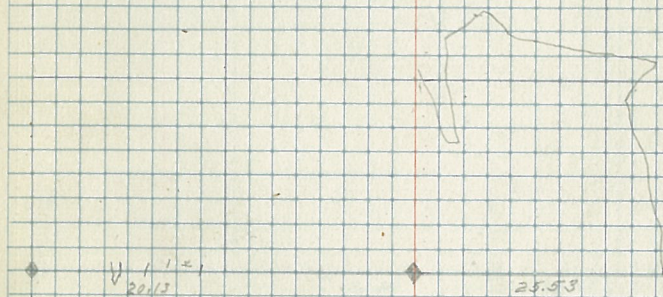
DIETZGEN
MINING

MINING
TRANSFER BOOK
No. 422P

CCC 52

Township	Range	Sec.	Meridian	Page
59 N	27 W	1	4	1
		2		2
		3		3
		4		4
		9		5
		10		6
		11		7
		12		8
		13		9
		14		10
		15		11
		16		12
		21		13
		22		14
		23		15
		24		16
		25		17
		26		18
		27		19
		28		20
		33		21
		34		22
		35		23
		36		24

51 T59N R27W



SE TSON R27W

32

32

10, 11

8484
8125

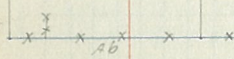
10 11
Tva 6

1.35

21

1112

Cor	Bearing Trees	Cor	Bearing Trees
	Spec. DTM Bearing Det		Spec. DTM Bearing Det



Ab

Ab

510 T39N R27W

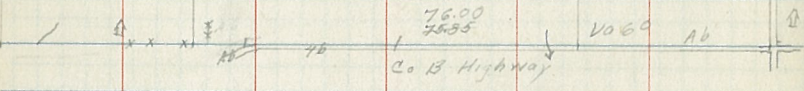
Archie

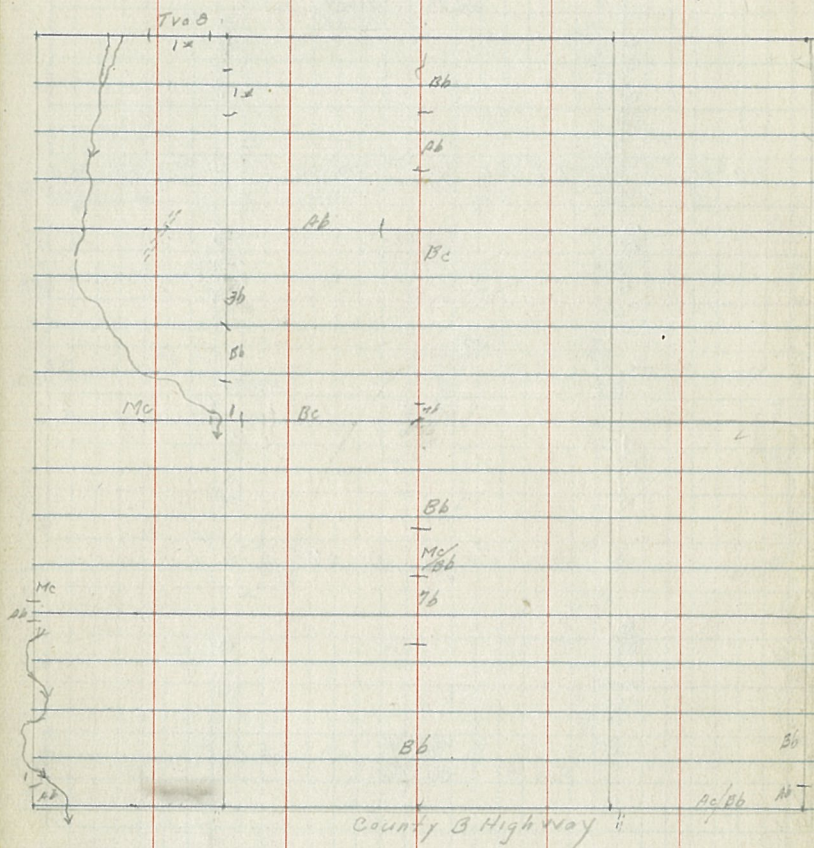
Ab

Ab

C

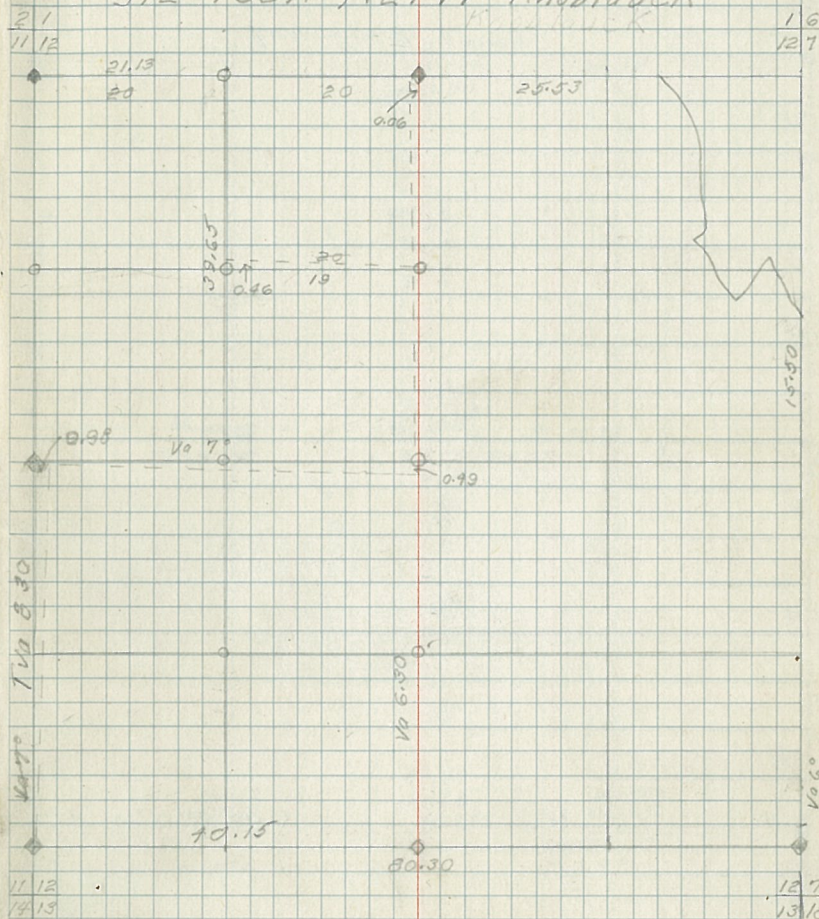
Ab



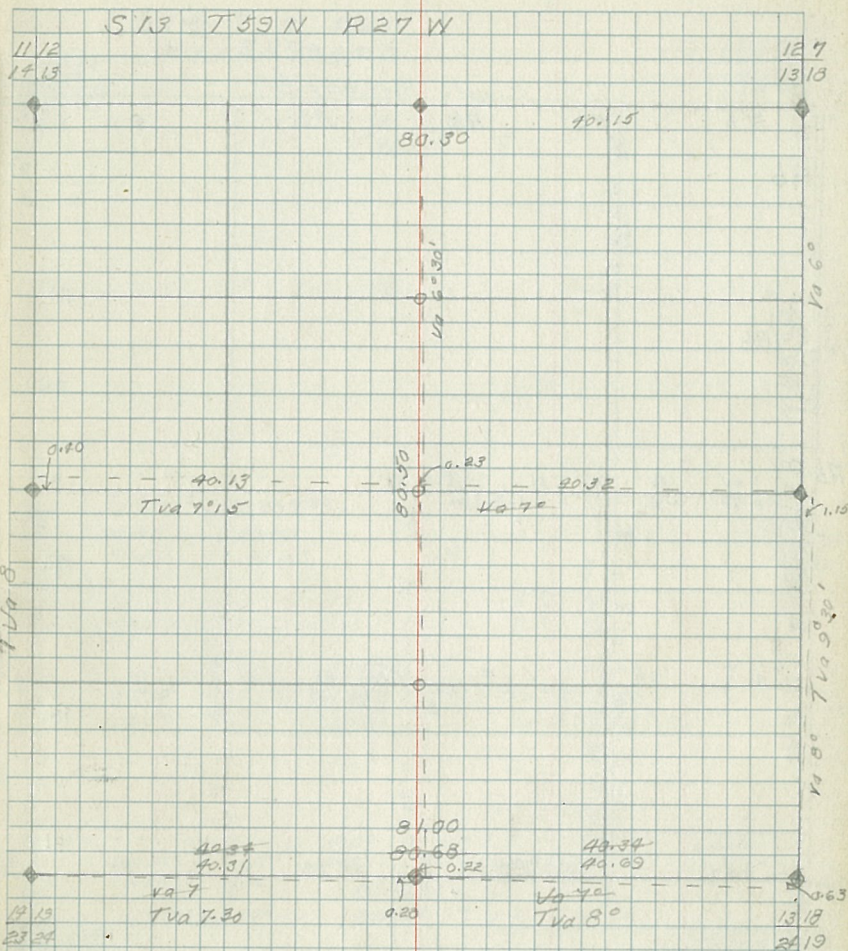
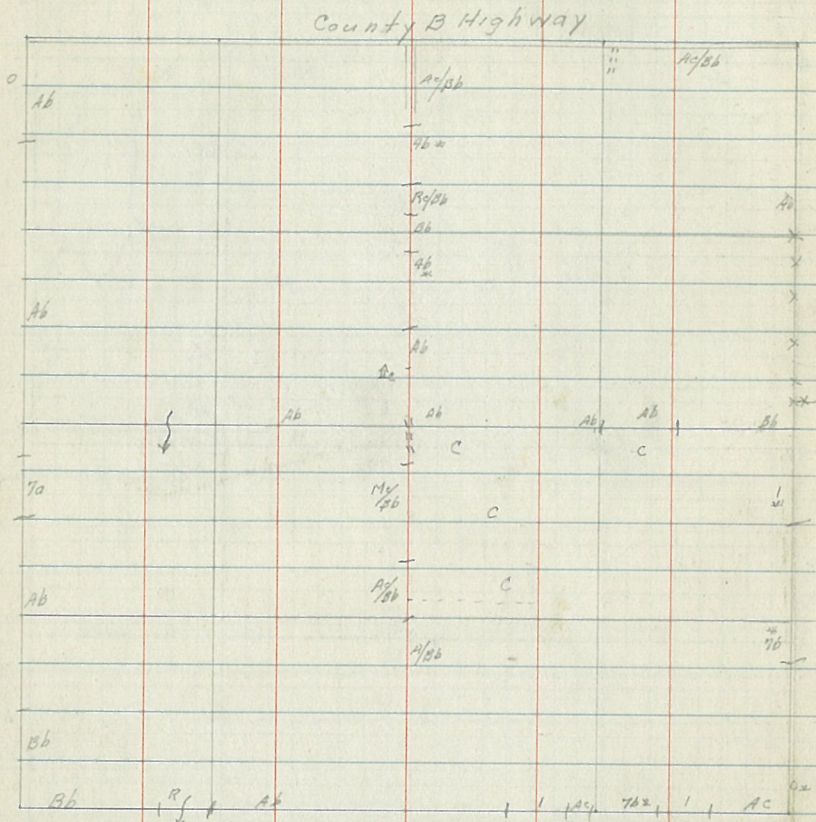


Oct 30 1934

512 T39N R27W Knoblauch

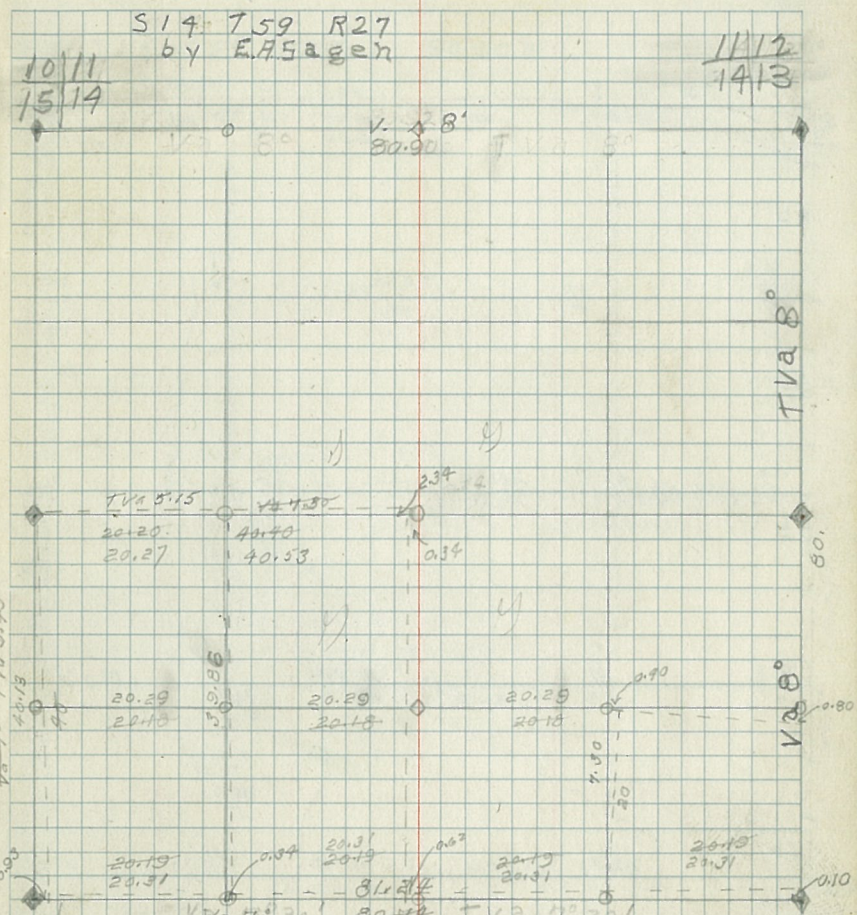
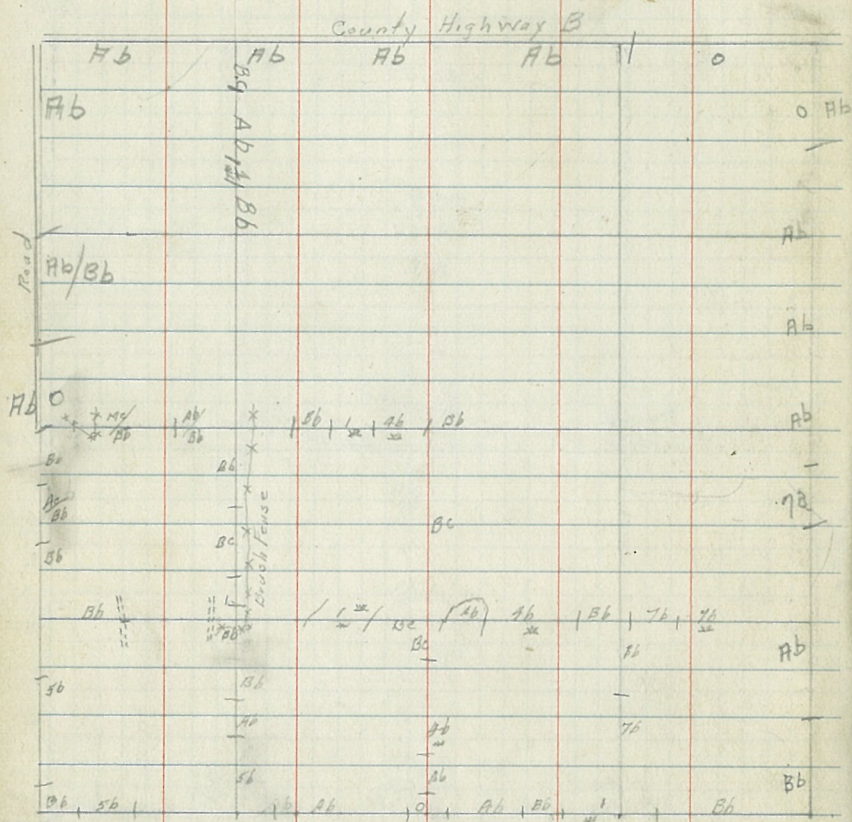


Bearing Trees				Bearing Trees			
Cor	Spec	DBH	Bearing Dist	Cor	Spec	DBH	Bearing Dist
11/12	Sp	20"	S58°E 0.34				
12/13							
11/12	Cedar	8"	N31°E 0.36				
1/12	Cedar	6"	N73°W 0.14				
1/12	Aspen	12"	S21°30'E 0.25				



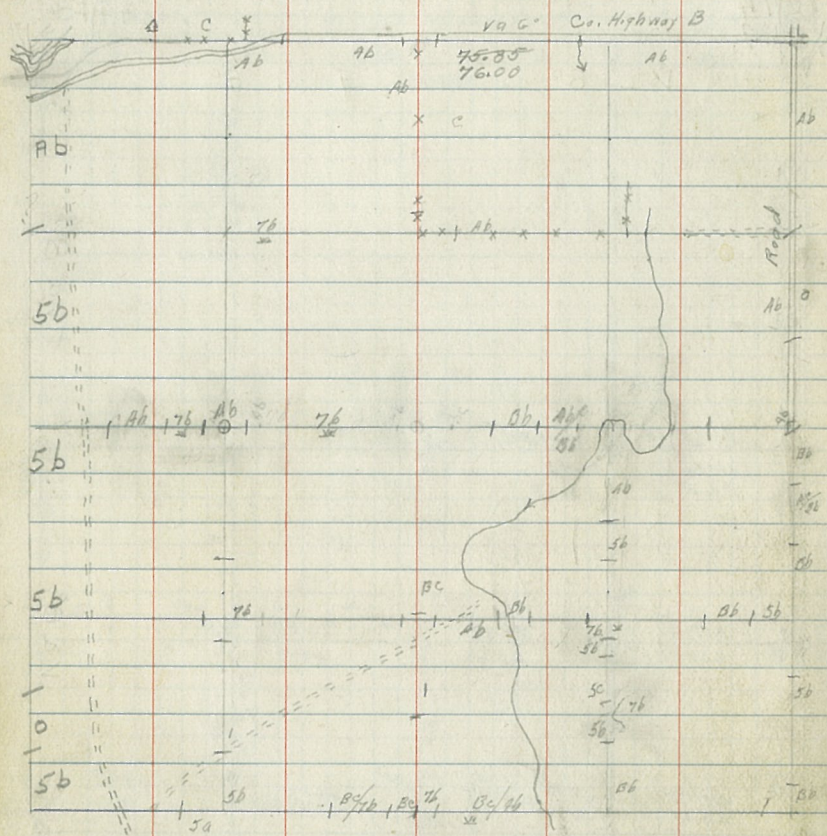
Bearing Trees				Bearing Trees			
Cor	Spec	DBH	Bearing Dist	Cor	Spec	DBH	Bearing Dist
11/12	Sp	20"	S 58 E 0.37	13/13	Sp	11"	N 4° W 0.51
14/13				24/19	Aspen	7"	S 16 W 0.50
14/13	Sp	6"	N 58 W 0.41		Aspen	12"	S 43 E 0.53
23/24	Bal	9"	S 42 W 0.38	12/7			
	B1	6"	S 42 E 0.45	13/13	Birch	8"	S 8 W 0.47
	B2	6"	N 45 W 0.34				
12	Sp	6"	S 45 W 0.73				
24	As	14"	N 23 1/2 E 0.23				

Stump

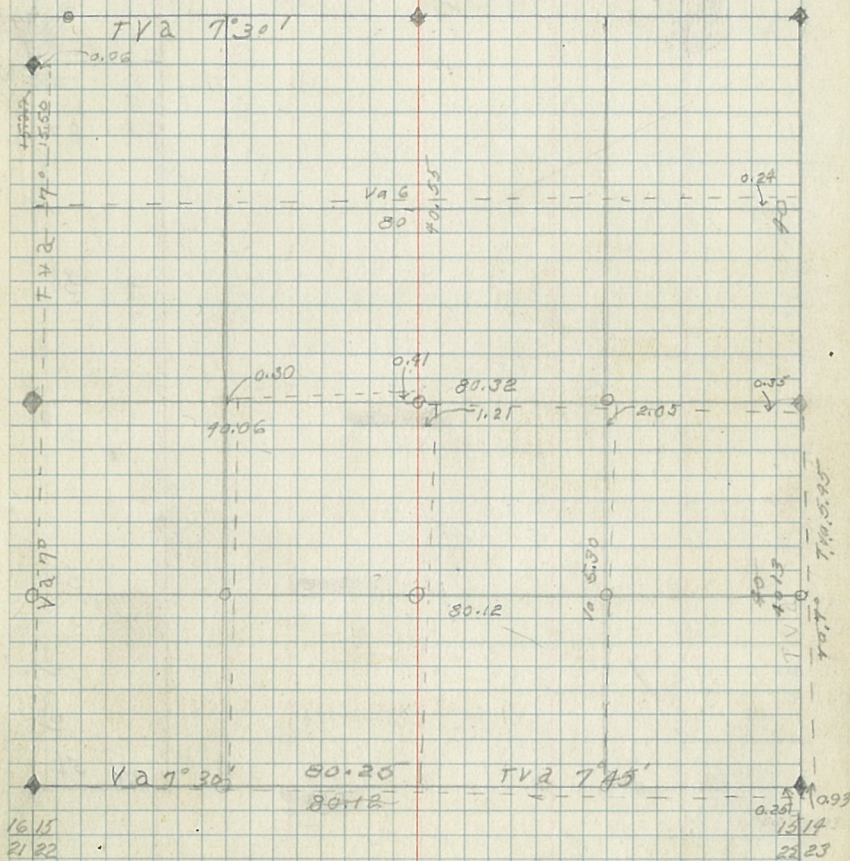


1514
2223

Co	Spec	DBH	Bear	DIS
1112	Spr.	20"	S 58° E	3.4
1413	HSP	16"	S 35° W	9.4
1011	HSP	8"	S 60° E	1.02
1514	S	6"	N 58° W	0.41
2223	B	9"	S 42° W	0.38
	B	6"	S 42° E	0.95
	B	6"	N 45° W	0.34



9 10 S 15 T 59 R 27 52807 10 11
16 15 15 14

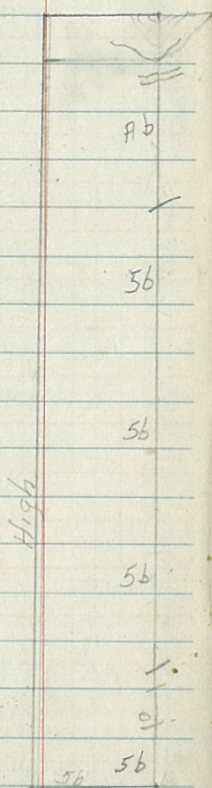


Cor	Bearing	Dist	Cor	Bearing	Dist
16 15	JP	6" S 55° W 0.82			
	JP	7" N 30° W 0.76			

12/21

34

S16 T59 R27 Sagen



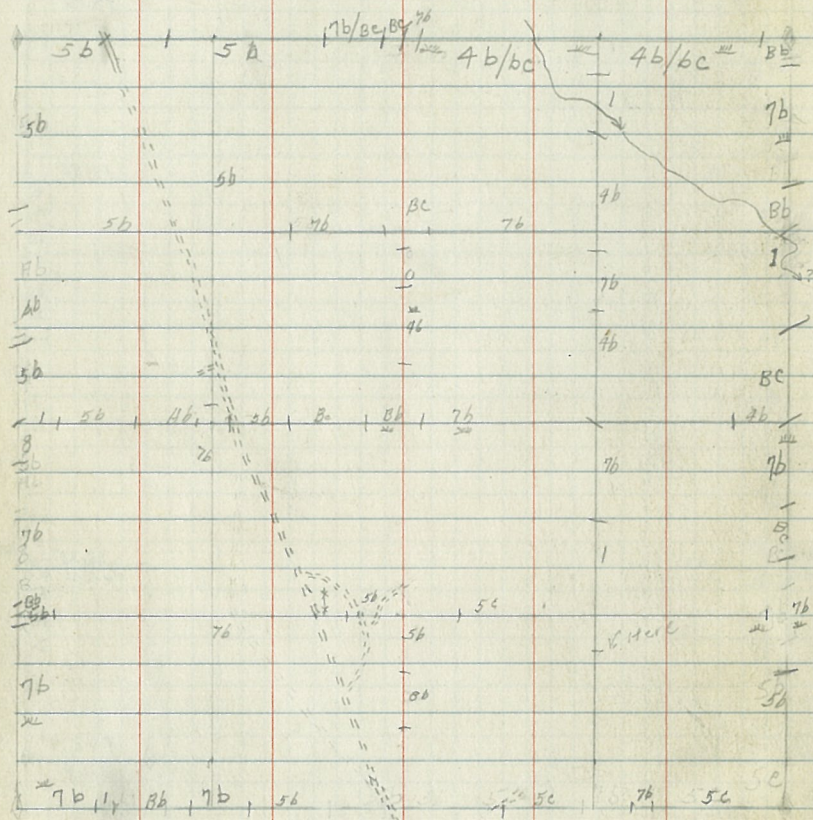
V2.7°

Va. 7.95'
12.19

S21 T59 R.27 E.A. SAGEN

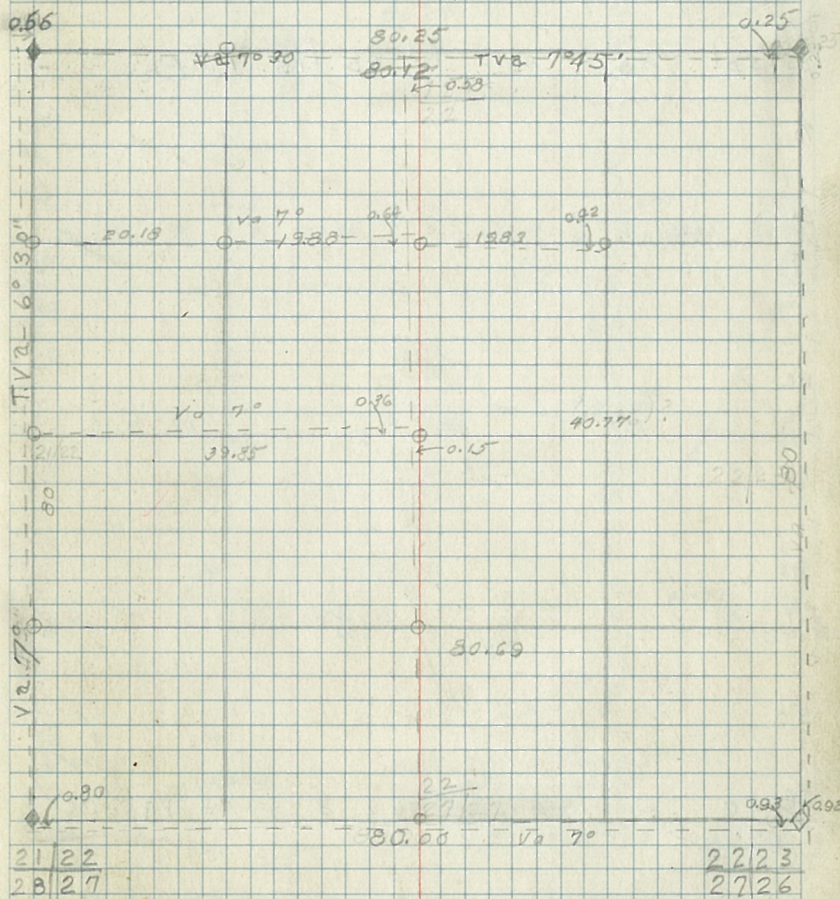
5b
 5b
 5b
 5b
 Highway # 6
 5b
 8
 7b
 5b 7b TBb
 5b 5b 5b
 5b 7b
 5b 7b

066
 12.19
 12.25
 Tva 6.30
 12.35 0.92
 Va 6.30
 7
 Tva 7
 13.41

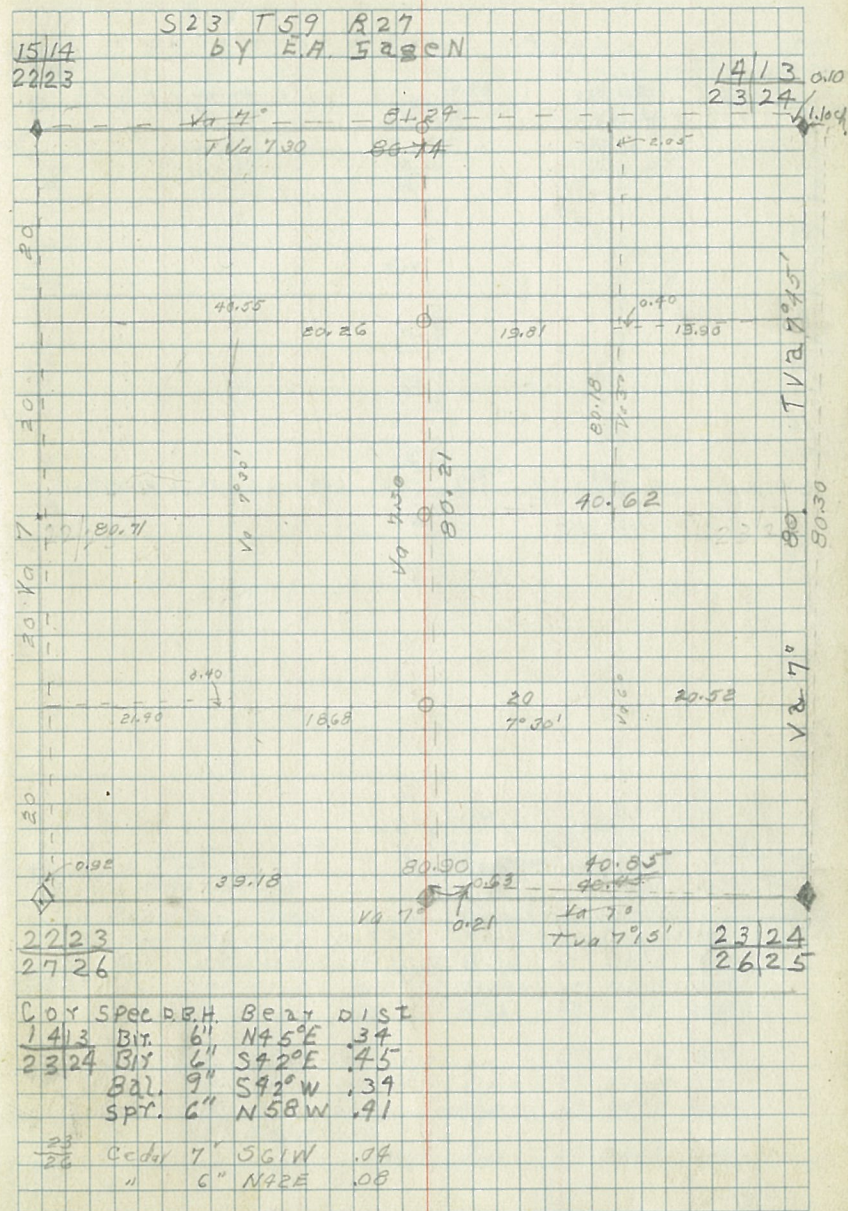
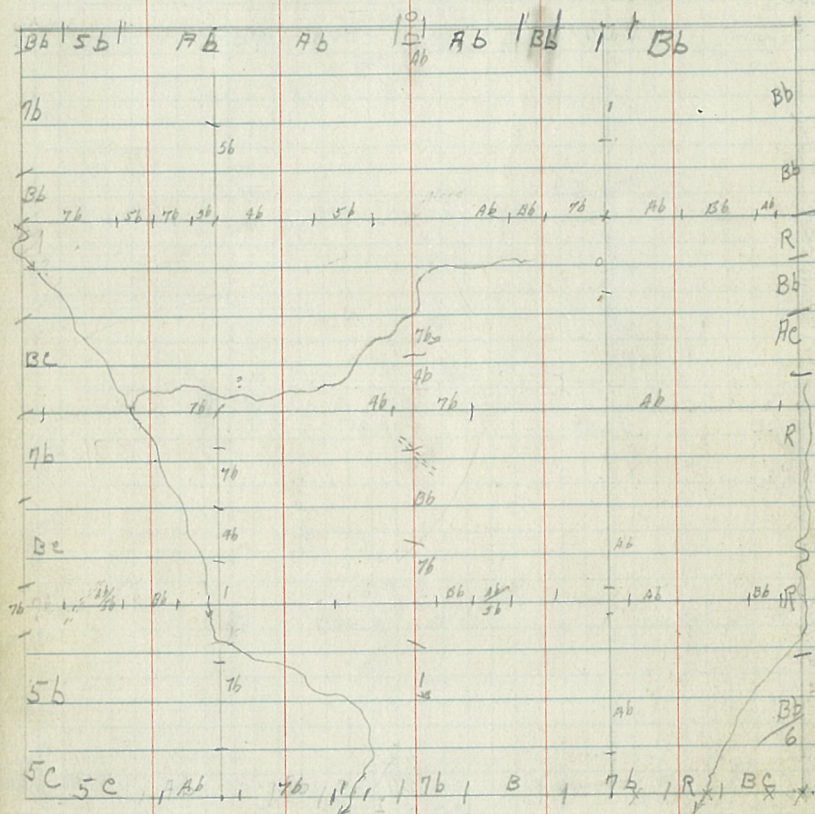


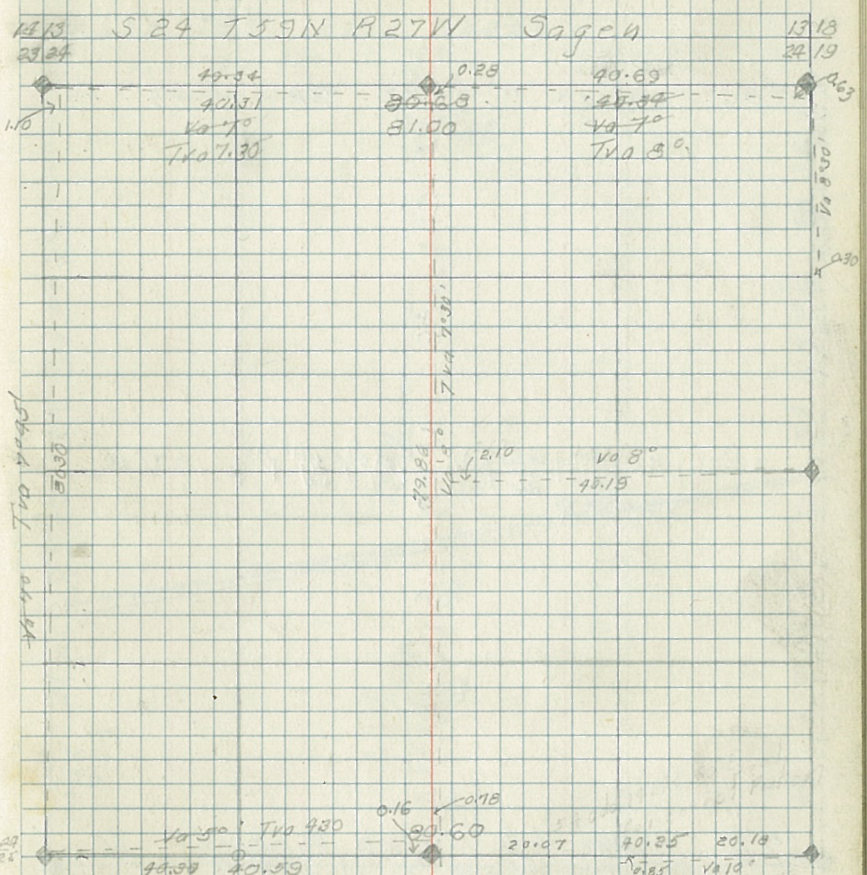
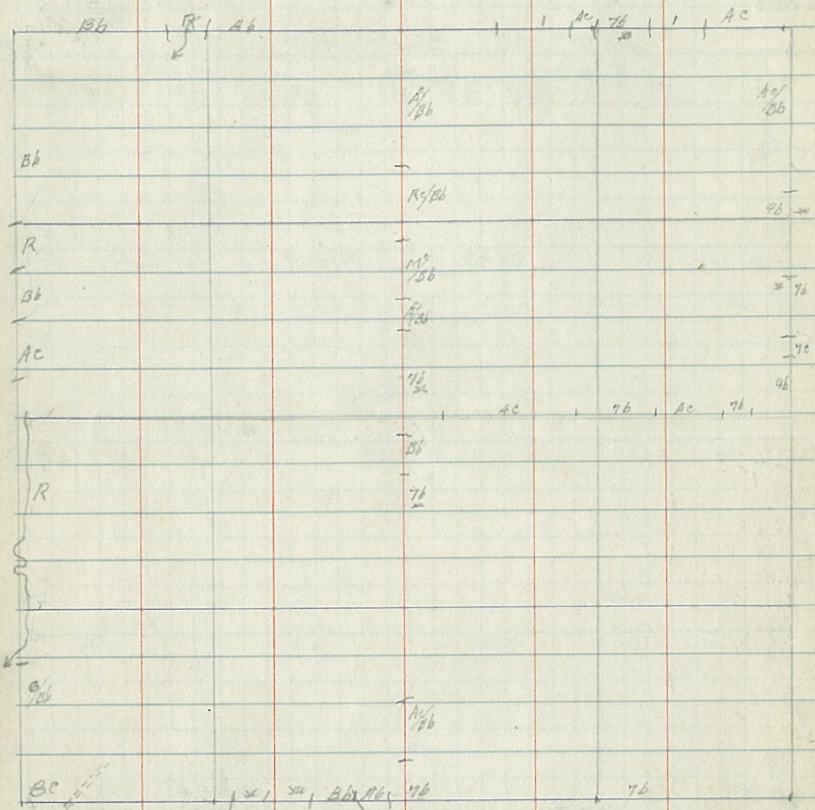
14

15/15 5.22 T.59 R27
 21/22 by E.A. Sagen 12/6- 15/14
 22/23

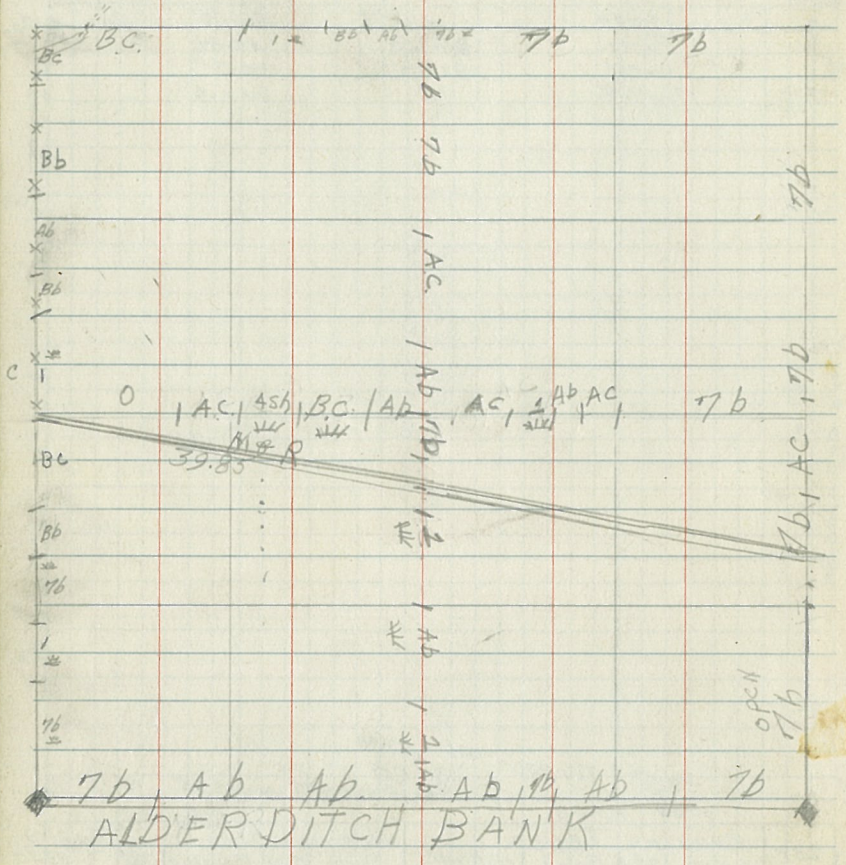


cor BEARING Trees				cor BEARING Trees					
	Spec.	DRH.	Bear.	Dist		Spec.	DRH.	Bear.	Dist
16/15	N.	P.	12	N.53°E.	.75				
21/22	N.	P.	10	N.31°W.	.37				
	N.	P.	11	S.59°W.	.31				
15/14	T		18	S.13°W.	.12				
22/23	T		18	N.35°W.	.25				
	T		18	N.60°E.	.12				

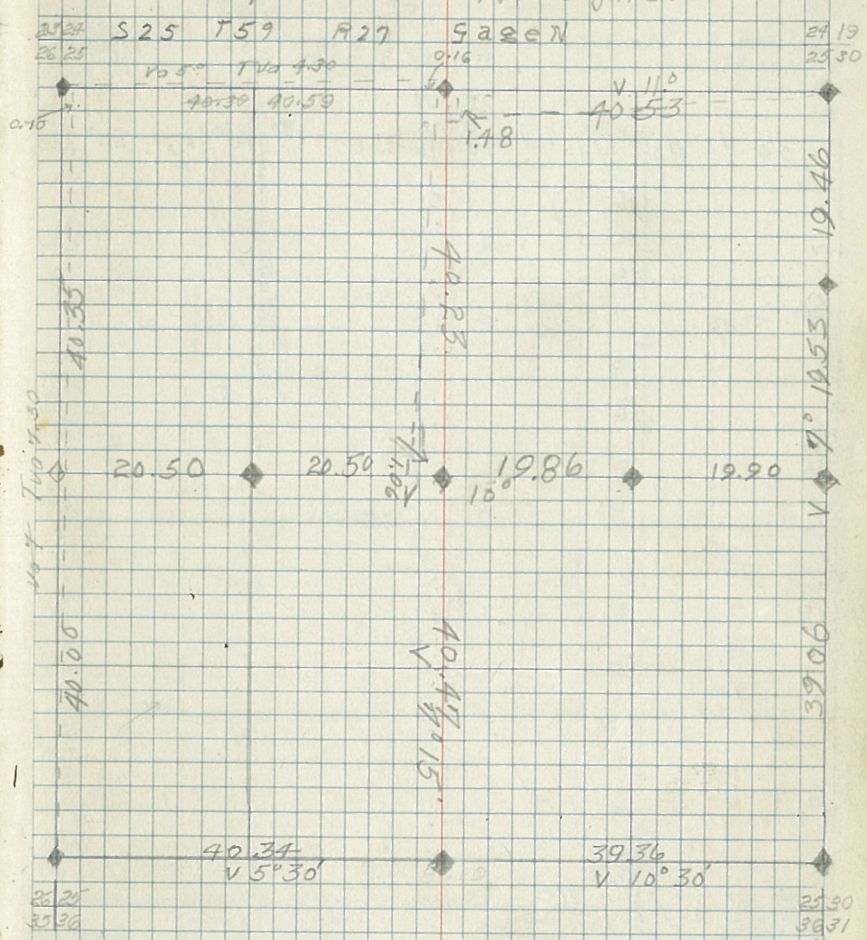




Cor	Spec	DBH	Bearing	Dist	Cor	Spec	DBH	Bearing	Dist
13113	As	12"	S 93 E	.53	24124	W Sp	12"	N 23 E	0.51
24119	As	7"	S 16 W	.50	24125	Aspen	12"	N 63 E	0.29
	Sp	11"	N 4 W	.51		W Sp	7"	S 7 E	0.54
14113									
24122	B1	4"	N 56 E	0.34	13118	Sp	11"	N 9 W	0.51
	"	"	S 44 E	0.26	24119	Aspen	7"	S 16 W	0.50
	B1	8"	S 22 W	0.35		Aspen	12"	S 43 E	0.52
	Sp	3"	N 50 W	0.52					
24					24119	Tom	5"	S 86 E	0.49
25	Sp	6"	S 7 E	0.57					

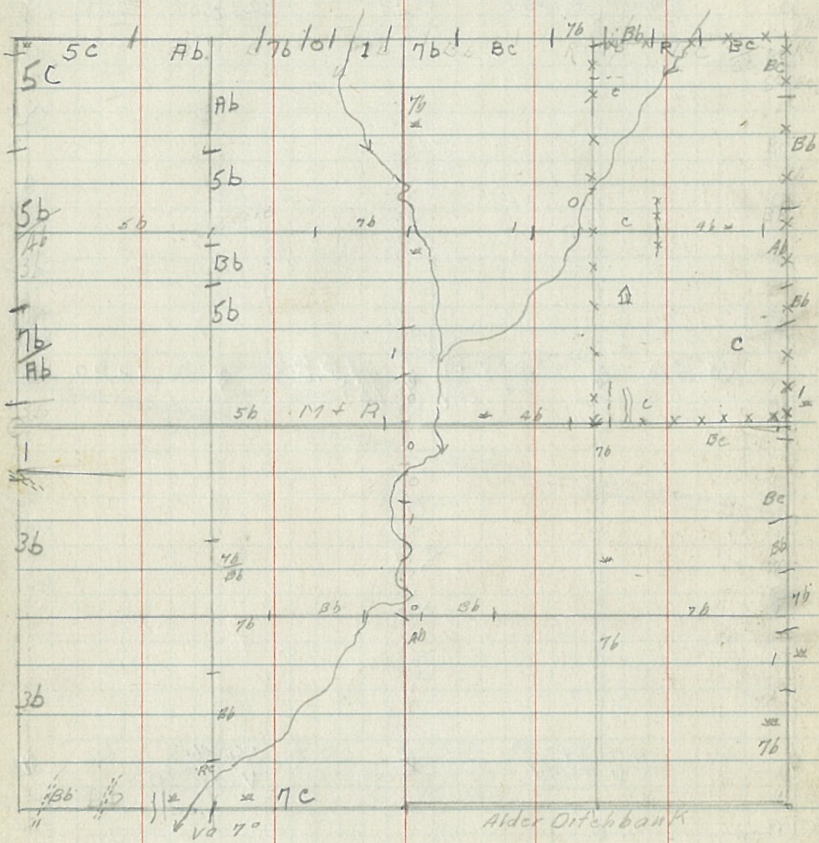


Oct 7 1935 Meagher



Cor	Bearing	Trees	Dist	Cor	Bearing	Trees	Dist
2728	W Sp	12" N29E	0.51	2430	B.S.P	4"	
2625	Aspen	12" N63E	0.28	2431	B.S.P	4" IRON PIPE	
	W Sp.	7" S71E	0.23	2419	B.S.P	6" N33E	50
				2550	B.S.P	7" S65E	70
					B.S.P	6" S48W	108
					B.S.P	7" N38W	52

v s 45 110° B.S.P N 41 W 22



526 T59 R27

Nov 2 1934

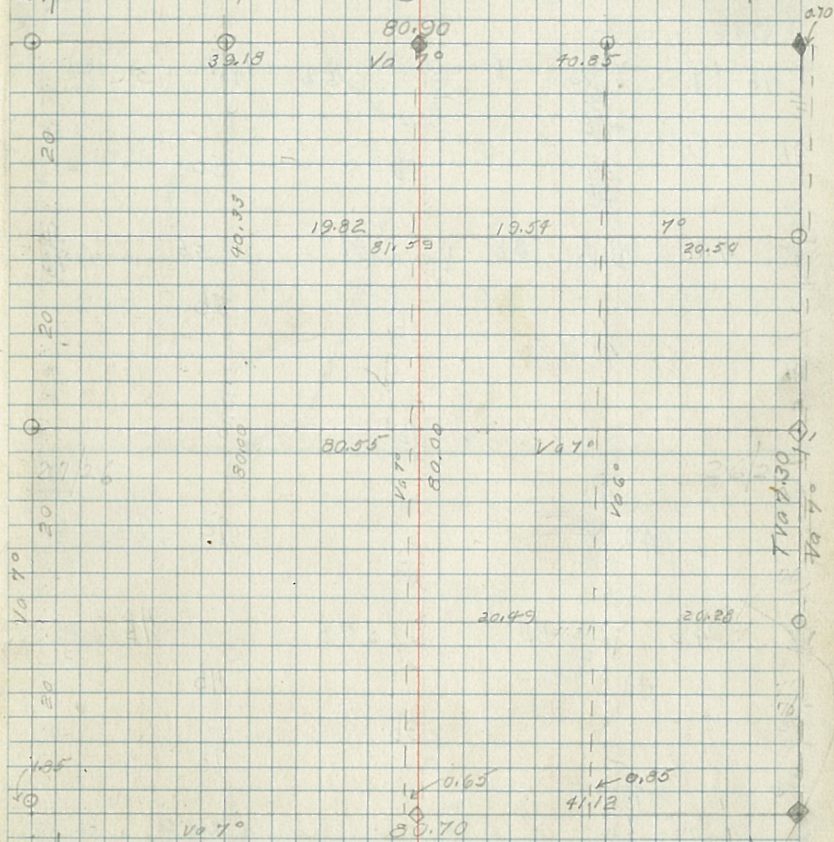
2223

2324

2726

by E.H. Sageh

2625



2726

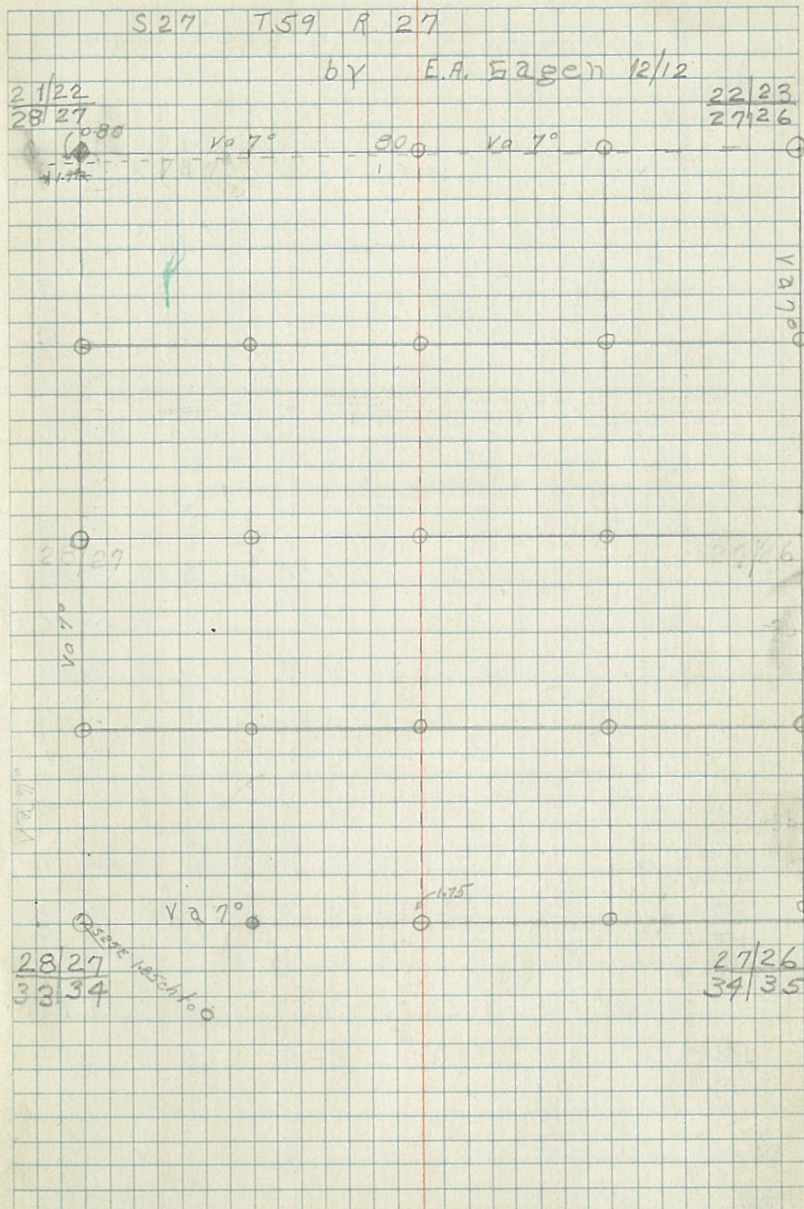
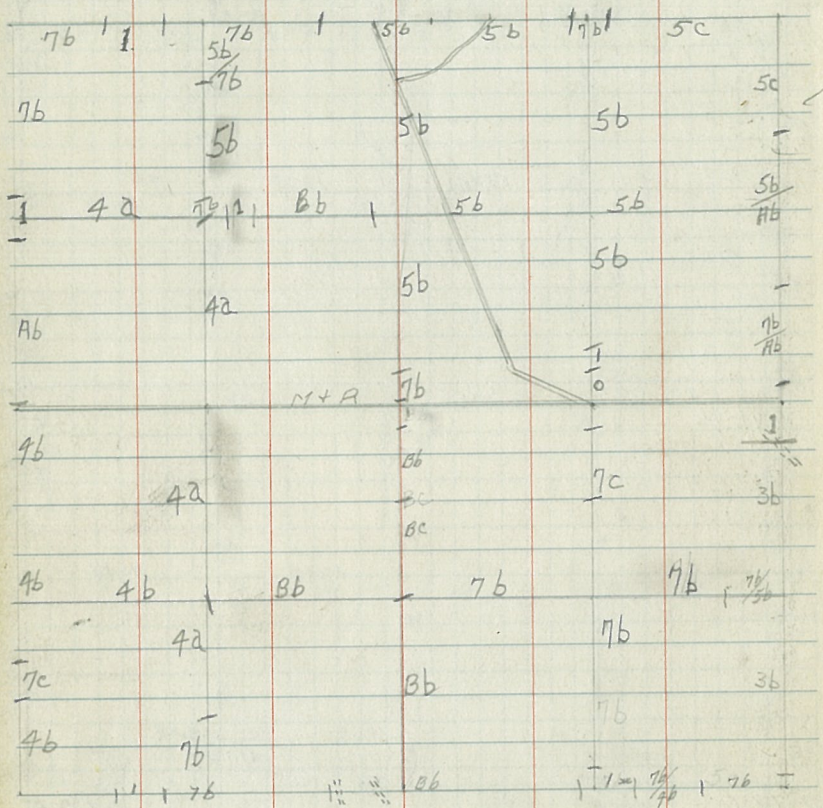
2625

3435

3536

COY BEARING TREES

	Spec.	D.B.H.	BEAR	DIS.
2324	W.S.	12"	N29°E	.51
2625	R.S.P.	12"	N63°E	.28
	W.S.	7"	S71°E	.23



Nov 1934

S 25 T 59N R 27W

Sagen

10 70
12.41

10 70
14.32
14.00

Highway # 6

76

20

96

72

46

56 126

Sept 21 - 1939

S.33 T.59N R.27W Knoblauck

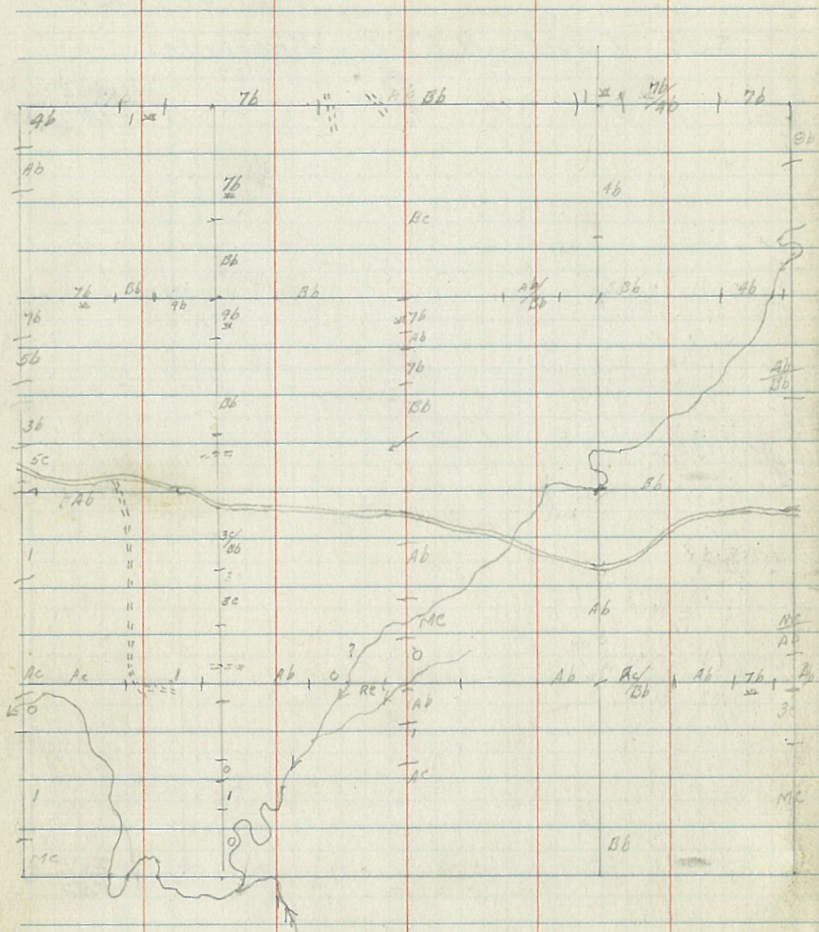
14.32

1400

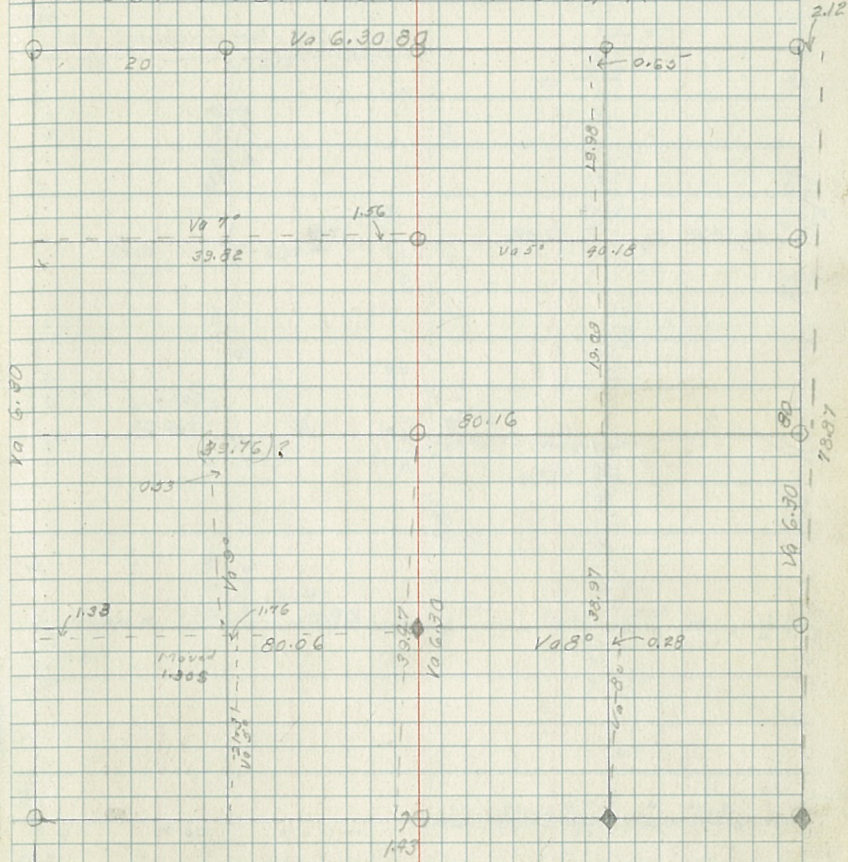
NC

15.32

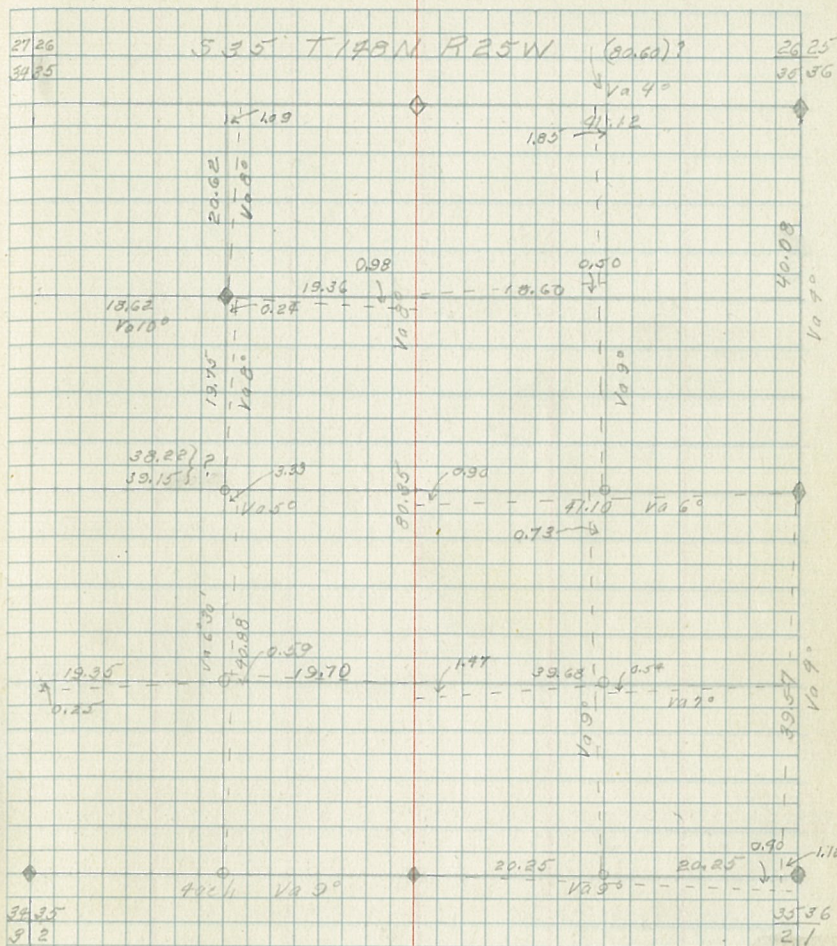
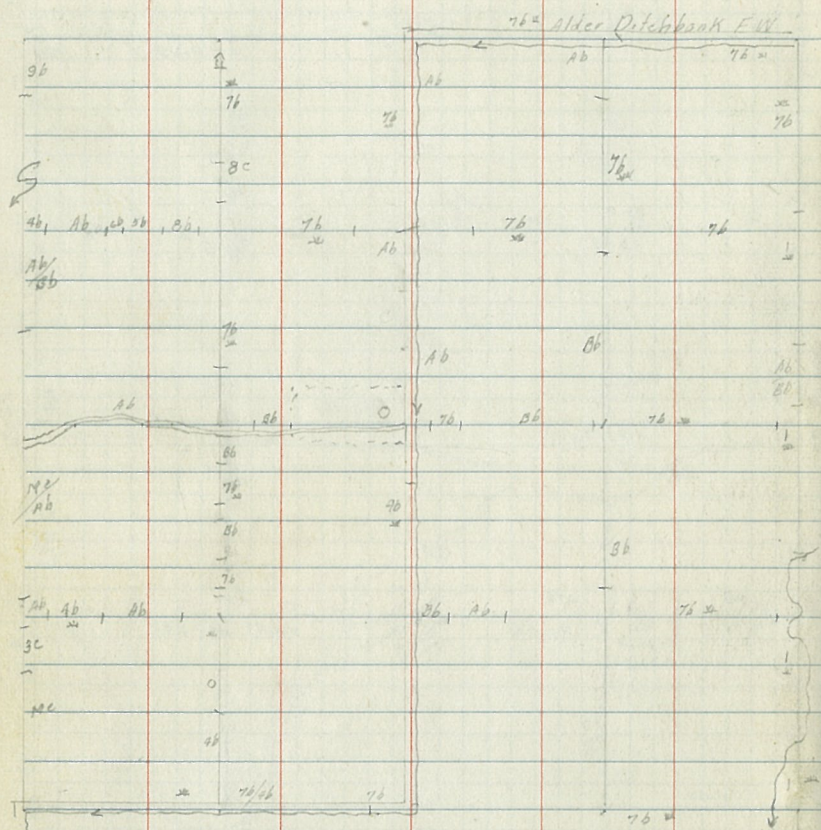
15.52



534 T59N R27W Knoblauck



Cor	Bearing	Dist	Spec	Bearing	Dist
E 27	Spc	Dist	Bearing	Dist	
3	Approx	Dist	20°	N22W	0.88



Bearing Trees				Bearing Trees					
Col	Spec	DBH	Bearing	Dist	Col	Spec	DBH	Bearing	Dist
2625	Tam	7"	S90E	0.70	35	Aspen	14"	N35W	0.55
3036	Tam	5"	S5W	0.70	2				
3136	Tam	7"	N70W	0.70	3036	Aspen	12"	N45W	0.63
3123	Cedar	16"	S79W	1.02					
312	Balm	15"	S32W	0.91					