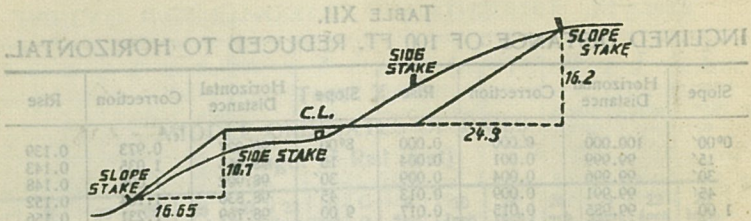


LINE PL SURVEY

T. 50N, R. 26W, 4th PM

MINI
TRANSIT BOOK

CCC 51



DISTANCES FROM SIDE STAKES FOR CROSS-SECTIONING.
SLOPE 1 1/2 TO 1. ROADWAY OF ANY WIDTH.

	0	.1	.2	.3	.4	.5	.6	.7	.8	.9	
0	0.00	0.15	0.30	0.45	0.60	0.75	0.90	1.05	1.20	1.35	0
1	1.50	1.65	1.80	1.95	2.10	2.25	2.40	2.55	2.70	2.85	1
2	3.00	3.15	3.30	3.45	3.60	3.75	3.90	4.05	4.20	4.35	2
3	4.50	4.65	4.80	4.95	5.10	5.25	5.40	5.55	5.70	5.85	3
4	6.00	6.15	6.30	6.45	6.60	6.75	6.90	7.05	7.20	7.35	4
5	7.50	7.65	7.80	7.95	8.10	8.25	8.40	8.55	8.70	8.85	5
6	9.00	9.15	9.30	9.45	9.60	9.75	9.90	10.05	10.20	10.35	6
7	10.50	10.65	10.80	10.95	11.10	11.25	11.40	11.55	11.70	11.85	7
8	12.00	12.15	12.30	12.45	12.60	12.75	12.90	13.05	13.20	13.35	8
9	13.50	13.65	13.80	13.95	14.10	14.25	14.40	14.55	14.70	14.85	9
10	15.00	15.15	15.30	15.45	15.60	15.75	15.90	16.05	16.20	16.35	10
11	16.50	16.65	16.80	16.95	17.10	17.25	17.40	17.55	17.70	17.85	11
12	18.00	18.15	18.30	18.45	18.60	18.75	18.90	19.05	19.20	19.35	12
13	19.50	19.65	19.80	19.95	20.10	20.25	20.40	20.55	20.70	20.85	13
14	21.00	21.15	21.30	21.45	21.60	21.75	21.90	22.05	22.20	22.35	14
15	22.50	22.65	22.80	22.95	23.10	23.25	23.40	23.55	23.70	23.85	15
16	24.00	24.15	24.30	24.45	24.60	24.75	24.90	25.05	25.20	25.35	16
17	25.50	25.65	25.80	25.95	26.10	26.25	26.40	26.55	26.70	26.85	17
18	27.00	27.15	27.30	27.45	27.60	27.75	27.90	28.05	28.20	28.35	18
19	28.50	28.65	28.80	28.95	29.10	29.25	29.40	29.55	29.70	29.85	19
20	30.00	30.15	30.30	30.45	30.60	30.75	30.90	31.05	31.20	31.35	20
21	31.50	31.65	31.80	31.95	32.10	32.25	32.40	32.55	32.70	32.85	21
22	33.00	33.15	33.30	33.45	33.60	33.75	33.90	34.05	34.20	34.35	22
23	34.50	34.65	34.80	34.95	35.10	35.25	35.40	35.55	35.70	35.85	23
24	36.00	36.15	36.30	36.45	36.60	36.75	36.90	37.05	37.20	37.35	24
25	37.50	37.65	37.80	37.95	38.10	38.25	38.40	38.55	38.70	38.85	25
26	39.00	39.15	39.30	39.45	39.60	39.75	39.90	40.05	40.20	40.35	26
27	40.50	40.65	40.80	40.95	41.10	41.25	41.40	41.55	41.70	41.85	27
28	42.00	42.15	42.30	42.45	42.60	42.75	42.90	43.05	43.20	43.35	28
29	43.50	43.65	43.80	43.95	44.10	44.25	44.40	44.55	44.70	44.85	29
30	45.00	45.15	45.30	45.45	45.60	45.75	45.90	46.05	46.20	46.35	30
31	46.50	46.65	46.80	46.95	47.10	47.25	47.40	47.55	47.70	47.85	31
32	48.00	48.15	48.30	48.45	48.60	48.75	48.90	49.05	49.20	49.35	32
33	49.50	49.65	49.80	49.95	50.10	50.25	50.40	50.55	50.70	50.85	33
34	51.00	51.15	51.30	51.45	51.60	51.75	51.90	52.05	52.20	52.35	34
35	52.50	52.65	52.80	52.95	53.10	53.25	53.40	53.55	53.70	53.85	35
36	54.00	54.15	54.30	54.45	54.60	54.75	54.90	55.05	55.20	55.35	36
37	55.50	55.65	55.80	55.95	56.10	56.25	56.40	56.55	56.70	56.85	37
38	57.00	57.15	57.30	57.45	57.60	57.75	57.90	58.05	58.20	58.35	38
39	58.50	58.65	58.80	58.95	59.10	59.25	59.40	59.55	59.70	59.85	39
40	60.00	60.15	60.30	60.45	60.60	60.75	60.90	61.05	61.20	61.35	40
41	61.50	61.65	61.80	61.95	62.10	62.25	62.40	62.55	62.70	62.85	41
42	63.00	63.15	63.30	63.45	63.60	63.75	63.90	64.05	64.20	64.35	42
43	64.50	64.65	64.80	64.95	65.10	65.25	65.40	65.55	65.70	65.85	43
44	66.00	66.15	66.30	66.45	66.60	66.75	66.90	67.05	67.20	67.35	44
45	67.50	67.65	67.80	67.95	68.10	68.25	68.40	68.55	68.70	68.85	45
46	69.00	69.15	69.30	69.45	69.60	69.75	69.90	70.05	70.20	70.35	46
47	70.50	70.65	70.80	70.95	71.10	71.25	71.40	71.55	71.70	71.85	47
48	72.00	72.15	72.30	72.45	72.60	72.75	72.90	73.05	73.20	73.35	48
49	73.50	73.65	73.80	73.95	74.10	74.25	74.40	74.55	74.70	74.85	49
50	75.00	75.15	75.30	75.45	75.60	75.75	75.90	76.05	76.20	76.35	50

Index
T59 N R 26 W

Section	Pages	Section	Pages
1	1-4	36	101-104
2	5-8	37	105-108
3	9-12	38	109-112
4	13-16	39	113-116
5	17-20	30	117-120
6	21-24	31	121-124
7	25-28	32	125-128
8	29-32	33	129-132
9	33-36	34	133-136
10	37-40	35	137-140
11	41-44	36	140-144
12	45-48		
13	49-52		
14	53-56		
15	57-60		
16	61-64		
17	65-68		
18	69-72		
19	73-76		
20	77-80		
21	81-84		
22	85-88		
23	89-92		
24	93-96		
25	97-100		

1

Sta Bear DIST.

Remarks

Starting Point at West Edge of Road
Near Beaver dam

0-1	S77°W	125 ^x	Beaver flowage to left.
1-2	N37°W	145 ^u	
2-3	N18°W	280 ⁺	
3-4	N34°W	260 ^x	
4-5	N1°W	345 ⁺	
5-6	N7°W	400 ⁺	
6-7	N50°W	295 ⁺	
7-8	S84°W	225 ⁺	
8-9	S66°W	230 ⁺	
9-10	S61°W	145 ^v	
10-11	S34°W	570 ^x	
11-12	S85°W	255 ⁺	
12-13	N66°W	465 ⁺	
13-14	N70°W	380 ⁺	
14-15	N74°W	295 ⁺	
15-16	S10°W	200 ⁺	
16-17	S4°W	180 ^u	
17-18	S13°W	285 ^u	
18-19	N76°W	205 ⁺	
19-20	N62°W	170 ^u	
20-21	S44°W	140 ^u	
21-22	N49°W	160 ⁺	
22-23	N11°W	115 ^u	
23-24	S64°W	205 ⁺	

plantation
H. Johnson

Traverse
8/23/90

18

19

Sta.	Bear.	Dist.	Remarks
24-25	S150W	190 ^x	
25-26	S86°W	255 ^x	
26-27	S59°W	365 ^x	
27-28	N73°W	220 ^x	
28-29	N51°E	360 ^x	
29-30	N4°E	575 ^x	
30-31	N45°W	460 ^x	
31-32	East	715 ^x	Hb to left
32-33	N87°E	275 ^x	
33-34	S69°E	485 ^x	
34-35	N69°E	470 ^x	
35-36	N89°E	530 ^x	
36-37	N59°E	170 ^x	
37-38	S88°E	2400	this course along N/4 line
38-39	South	530 ^x	this course along E/4 line
39-40	S71°E	245 ^x	
40-41	South	625 ^x	Swamp to left
41-42	S15°W	260 ^x	
42-43	S86°W	315 ^x	
43-44	S51°W	290 ^x	
44-45	S65°W	70 ^x	To Point of Beginning
45-46			
46-47			
47-48			
48-49			
49-50			

20

Sta. 38 is AT Approx 1/2 Cor. #6 S. 13-57-25

21

Sta Bev. Dist. Remarks

Beginning at a point 18 ch. N88°W of section

Corner Common to Secs. 14-12-57-25

Hence began traverse of Plantation

0-1	N27°W	220	✓	Ab to Right
1-2	N32°E	280	✓	
2-3	N2°E	295	✓	
3-4	N11°W	320	✓	
4-5	N29°W	380	✓	
5-6	N65°W	325	✓	
6-7	N18°E	200	✓	
7-8	N63°W	186	✓	
8-9	N39°E	290	✓	
9-10	N10°E	200	✓	
10-11	N17°E	200	✓	
11-12	S53°W	190	✓	
12-13	S17°W	285	✓	
13-14	S31°W	325	✓	
14-15	N19°W	230	✓	
15-16	N10°E	265	✓	
16-17	N30°W	230	✓	
17-18	N22°W	125	✓	
18-19	S2°W	310	✓	
19-20	S29°W	335	✓	Road
20-21	S5°W	175	✓	
21-22	S4°E	210	✓	
22-23	S14°W	400	✓	

Sta	Bear.	Dist.	Remarks
23-24	226°E	310 ✓	
24-25	590°E	175 ✓	
25-26	510°W	310 ✓	
26-27	573°W	185 ✓	Leave Road
27-28	N40°W	130 ✓	
28-29	N31°W	435 ✓	
29-30	N20°E	280 ✓	
30-31	N60°W	275 ✓	
31-32	542°W	165 ✓	
32-33	553°W	270 ✓	
33-34	564°E	315 ✓	
34-35	523°E	240 ✓	
35-36	527°W	465 ✓	8c to Right
36-37	539°W	390 ✓	
37-38	598°W	215 ✓	
38-39	N89°E	320 ✓	
39-40	567°E	215 ✓	
40-41	528°E	160 ✓	Road 86 to Right
41-42	511°W	325 ✓	
42-43	512°E	310 ✓	
43-44	53°E	410 ✓	
44-45	51°W	165 ✓	Sta 45 Leave Road
45-46	588°W	300 ✓	
46-47	590°W	215 ✓	
47-48	584°W	215 ✓	
48-49	510°N	476 ✓	2eh on 5 Course hit Picket 2-4. W to 1/6 H 5

41	Sta.	Beav.	Dist.	Remarks
	49-50	S37°E	370 ✓	
2	50-51	S11°W	420 ✓	
2	51-52	S48°W	200 ✓	
2	52-53	S96°E	220 ✓	
2	53-54	N38°E	175 ✓	
2	54-55	S70°E	405 ✓	
2	55-56	S17°E	225 ✓	
2	56-57	S58°E	385 ✓	
3	57-58	S10°E	130 ✓	
3	58-59	S13°W	430 ✓	
3	59-60	S22°E	335 ✓	
3	60-61	South	330 ✓	
3	61-62	S22°W	615 ✓	
3	62-63	S19°E	535 ✓	
3	63-64	S81°E	930 ✓	
3	64-65	N41°E	425 ✓	
3	65-66	N20°E	350 ✓	
3	66-67	N53°W	190 ✓	
3	67-68	N12°W	180 ✓	
3	68-69	N6°E	270 ✓	
3	69-70	N27°W	290 ✓	
3	70-71	N14°E	375 ✓	
3	71-72	N2°E	320 ✓	
3	72-73	N68°W	205 ✓	
3	73-74	N5°E	300 ✓	
3	74-75	N30°W	320 ✓	

1438E

58

59

Sta.	Bear.	Dist.	Remarks.
75-76	N120E	290✓	
76-77	N20W	300✓	
77-78	N74°W	165✓	
78-79	N53°W	150✓	
79-80	N56°W	270✓	
80-81	N42°W	295✓	
81-82	N56°W	255✓	
82-83	N10°E	815✓	to Right
83-84	N51°E	700✓	
84-85	S71°E	190✓	
85-86	S79°E	230✓	
86-87	N3°E	300✓	
87-88	N10°W	120✓	
88-89	N43°E	200✓	
89-90	N70°E	295✓	
90-91	N40°E	260	N32°E 1.55
91-92	N87°W	105	
92-93	N88°W	200✓	Point at beginning
93-94			
94-95			
95-96			
96-97			
97-98			
98-99			
99-100			

60

61 Traverse of furrowing ins. 4+9. 57-26

Sta Bear. Dist.

Remarks

Point of beginning at Cor. 5000 ⁷¹³ 57-26

0-1	Nov.	1540 ⁸	
1-2	N55°W	205 [✓]	Spruce swamp to R.
2-3	S34°W	380 [✓]	
3-4	S55°W	155 [✓]	
4-5	N48°W	190 [✓]	
5-6	N16°W	280 [✓]	
6-7	N5°W	120 [✓]	
7-8	N28°E	180 [✓]	
8-9	N42°E	215 [✓]	
9-10	N15°W	200 [✓]	
10-11	N8°E	200 [✓]	
11-12	N3°W	155 [✓]	Mb to Right
12-13	N19°E	265 [✓]	
13-14	N83°E	120 [✓]	
14-15	S84°E	310 [✓]	
15-16	N1°E	310 [✓]	
16-17	S89°W	365 [✓]	
17-18	N53°W	355 [✓]	
18-19	N26°W	280 [✓]	
19-20	N35°E	235 [✓]	
20-21	N56°E	220 [✓]	
21-22	N32°E	220 [✓]	
22-23	S89°W	185 [✓]	Ashwale to Right
23-24	S64°W	205 [✓]	
24-25	S42°W	180 [✓]	A6 to Right

62

S. 57-26 R. 26

Corner consists of a scribed Aspen
Post 2" x 24" Fair Condition & 1/2" x 10"
3-sided Iron Pin. County Corner

Can. Bearing Trees
Spec. 100' 100' 100'
N.E. Tang 75° N 85° W 300'

Sta.	Bear.	Dist.	Remarks.
25-26	N56°W	190 ✓	
26-27	S20°W	175 ✓	
27-28	S90°E	460 ✓	
28-29	S31°E	430 ✓	
29-30	S45°W	120 ✓	
30-31	S30°W	175 ✓	
31-32	S30°E	160 ✓	Spruce swamp to Right
32-33	S22°E	105 ✓	
33-34	S23°W	165 ✓	
34-35	S6°E	130 ✓	
35-36	S39°W	100 ✓	
36-37	S10°W	180 ✓	
37-38	S80°W	125 ✓	
38-39	N79°W	105 ✓	
39-40	N71°W	235 ✓	
40-41	S73°W	255 ✓	Abts Right
41-42	S61°W	205 ✓	Sta 42 N. Edge of Road.
42-43	S53°E	200 ✓	to 570
43-44	S70°E	390 ✓	"
44-45	S39°E	840 ✓	"
45-46	S16°W	465 ✓	leave 570 Abts Right.
46-47	S82°W	255 ✓	
47-48	S78°W	250 ✓	
48-49	N89°W	135 ✓	951k on this course is
49-50	N16°W	180 ✓	Picket marked 14 ch. E to top of this
50-51	N69°E	285 ✓	this course along road

65

Sta.	Bear.	Dist.	Remarks
51-52	N 81° E	210 ✓	Sta 52 leave road.
52-53	N 170° W	160 ✓	
53-54	S 75° W	550 ✓	
54-55	N 29° W	205 ✓	this course from Sta. # 51
55-56	N 67° W	135 ✓	
56-57	West	160 ✓	
57-58	N 64° W	200 ✓	
58-59	N 70° W	210 ✓	
59-60	N 28° E	300 ✓	
60-61	N 52° E	190 ✓	
61-62	N 52° E	390 ✓	
62-63	N 6° E	370 ✓	H to Right
63-64	N 28° W	260 ✓	
64-65	N 3° W	255 ✓	
65-66	N 17° E	260 ✓	Sta 66 & of Tr. # 570
66-67	N 49° E	290 ✓	Spruce swamp to Right
67-68	S 66° E	225 ✓	
68-69	S 8° E	180 ✓	
69-70	S 60° E	200 ✓	
70-71	N 22° E	135 ✓	
71-72	N 19° W	150 ✓	
72-73	N 43° E	185 ✓	
73-74	N 11° E	255 ✓	
74-75	N 90° W	225 ✓	
75-76	N 40° E	210 ✓	
76-77	N 54° W	170 ✓	

66

Sta. 77 to 82

Spruce swamp to Right.

67

Sta.	Bear.	Dist.	Remarks
77-78	S95°W	163 ✓	9/9/90
78-79	S30°W	240 ✓	
79-80	S92°W	140 ✓	Swamp inside furrowing
80-81	N61°W	190 ✓	
81-82	N77°E	225 ✓	This course to separate piece of furrowing
82-83	N29°E	345 ✓	Spruce Swamp to R.
83-84	N15°E	275 ✓	
84-85	N23°W	205 ✓	
85-86	N68°E	180 ✓	
86-87	N58°E	190 ✓	
87-88	N82°E	180 ✓	
88-89	N10°E	240 ✓	
89-90	N15°E	170 ✓	
90-91	S72°E	165 ✓	
91-92	N83°E	85 ✓	
92-93	N43°E	105 ✓	
93-94	N31°E	90 ✓	
94-95	N81°W	190 ✓	
95-96	S85°W	190 ✓	
96-97	S79°W	215 ✓	H6 To Right
97-98	S36°W	170 ✓	
98-99	S53°W	220 ✓	
99-100	N29°W	95 ✓	
0-1	N21°E	190 ✓	
1-2	N4°E	170 ✓	
2-3	N42°E	205 ✓	

68

69

Sta.	Bear.	Dist.	Remarks
3-4	N76°E	120 ✓	
4-5	N23°W	115 ✓	
5-6	N80°W	170 ✓	
6-7	N53°W	120 ✓	
7-8	N39°E	210 ✓	
8-9	S68°E	200 ✓	
9-10	N8°W	165 ✓	
10-11	S86°W	110 ✓	
11-12	N40°W	100 ✓	
12-13	N30°W	70 ✓	
13-14	N22°E	180 ✓	
14-15	N88°E	110 ✓	
15-16	S54°E	190 ✓	
16-17	S27°E	200 ✓	
17-18	S53°E	105 ✓	
18-19	S4°E	135 ✓	
19-20	S67°W	130 ✓	
20-21	S45°E	175 ✓	
21-22	N31°E	210 ✓	
22-23	N6°E	200 ✓	
23-24	N50°W	215 ✓	
24-25	N13°E	100 ✓	
25-26	N59°W	305 ✓	
26-27	S88°W	210 ✓	
27-28	S85°W	155 ✓	
28-29	N54°W	220 ✓	

Sec 18 T59 R26

70

Cor. Bearing Trees

	Spac	DBH	Bearing	Dist
E 1/4	N.P.	10"	N42°W	.37ch.
	N.P.	14"	S42°E	.21ch.
NE	W.C. Gln	8"	N47°E	.15ch.

Sta.	Bear.	Dist.	Remarks
29-30	S84°W	305 ✓	776 to Right
30-31	N96°W	215 ✓	
31-32	N11°W	230 ✓	
32-33	N18°E	145 ✓	
33-34	N12°E	130 ✓	
34-35	S87°E	235 ✓	
35-36	N4°E	230 ✓	A6 to Right
36-37	S60°E	200 ✓	
37-38	N84°E	355 ✓	
38-39	N79°E	185 ✓	
39-40	N86°E	200 ✓	
40-41	N42°E	305 ✓	B6 to Right
41-42	N68°W	110 ✓	
42-43	S92°W	145 ✓	A6 to Right
43-44	N62°W	285 ✓	
44-45	N87°W	225 ✓	
45-46	N67°W	130 ✓	
46-47	N20°W	235 ✓	
47-48	N33°W	280 ✓	
48-49	N77°W	225 ✓	
49-50	S51°W	565 ✓	
50-51	S37°W	125 ✓	
51-52	S64°W	575 ✓	Sta. 152 is a T picket.
52-53	S52°W	140 ✓	
53-54	N48°W	250 ✓	
54-55	N40°W	210 ✓	

Marked 70 chains south to Sta. 449-57-26

Sta	Bearg.	Dist.	Remarks
55-56	S82°W	180 ✓	
56-57	S5°E	500 ✓	
57-58	S51°W	250 ✓	
58-59	West	265 ✓	
59-60	S89°W	420 ✓	
60-61	S8°E	240 ✓	
61-62	S27°W	205 ✓	
62-63	S28°E	215 ✓	Sta 163 at Picket 12 ch. E to 1/4 H
63-64	East	1200 ✓	This Course along N. 1/4 line
64-65	South	2125 ✓	This Course along 1/4 line - 20.15 on this Course hit C. 1/4. Sec. 4-57-26
65-66	S71°E	320 ✓	TTB to Right.
66-67	S86°E	165 ✓	
67-68	S69°E	125 ✓	
68-69	N88°E	275 ✓	
69-70	S40°E	180 ✓	
70-71	N82°E	125 ✓	
71-72	S21°E	210 ✓	
72-73	S53°W	215 ✓	
73-74	S82°E	166 ✓	
74-75	S17°W	225 ✓	This Course the reverse of Course 21-22
75-76	S68°W	135 ✓	
76-77	S29°W	140 ✓	
77-78	S39°E	120 ✓	
78-79	S27°W	135 ✓	
79-80	N79°W	235 ✓	
80-81	S65°W	170 ✓	

Sta.	Bear.	Dist.	Remarks
81-82	N53°W	475V	Sta 81 is on # 1 of H 570 Eusec 81-82 is E of 570
82-83	S 68°W	275V	Sta 83 is a T pocket marked.
83-84	South	1400V	H to Right
84-85	550°E	900V	
85-86	S 63°W	340V	
86-87	South	1000V	Sta 87 at 1/4 Cor. 4+9.
87-88	S 20°W	1996V	Sta 88 at 1/4 # 53.9-57-26
88-89	S 71°E	400V	Spruce swamp to Right
89-90	S 28°W	250V	
90-91	N 89°W	255V	
91-92	N 86°W	170V	
92-93	S 84°W	200V	
93-94	S 74°W	190V	
94-95	N 67°W	190V	
95-96	N 18°W	190V	H to Right
96-97	South	150V	
97-98	S 31°E	170V	
98-99	S 86°W	195V	
99-200	S 43°E	195V	
200-201	S 67°E	115V	
1-2	S 84°E	180V	
2-3	N 87°E	120V	
8-7	N 60°E	120V	
1-5	N 75°E	135V	
5-6	S 20°E	155V	
6-7	S 7°E	225V	

28 ch. S. to 1/4 Cor. Secs. 4+9-57-26

Corner consists of 3" X 36" Sealed P.O.T. & 1/2" X 8" Sealed Pin

11. 11. 17. 2" X 30" Sealed P.O.T. & 1/2" X 8" Sealed Pin
 Form 958 on 6" Dry Birch Stake S 67° W 21 + T.
 B.P. 3" B. Spruce S 70° E 229k.

Sta.	Bear	Dist.	Remarks
7-8	S40°W	125 ✓	
8-9	S34°E	125 ✓	
9-10	S60°E	160 ✓	
10-11	S65°E	135 ✓	1/3 to Right
11-12	S88°E	90 ✓	
12-13	N8°W	105 ✓	
13-14	N28°W	175 ✓	4/6 to Right
14-15	N50°W	125 ✓	
15-16	N60°W	95 ✓	
16-17	N25°W	155 ✓	
17-18	N33°E	140 ✓	
18-19	N52°E	290 ✓	
19-20	N18°E	215 ✓	
20-21	N10°W	91.5 ✓	
21-22	N18°E	185 ✓	
22-23	N65°W	200 ✓	
23-24	N10°E	190 ✓	
24-25	S72°E	260 ✓	
25-26	S65°E	230 ✓	
26-27	N15°E	115 ✓	Spruce Swamp to Right
27-28	N24°E	110 ✓	
28-29	N46°E	375 ✓	
29-30	N80°E	240 ✓	
30-31	N48°E	180 ✓	
31-32	N56°E	355 ✓	
32-33	S84°E	310 ✓	

79

Sta.	Bear.	Dist.	Remarks
33-34	S 9° W	150 ✓	
34-35	S 60° E	235 ✓	
35-36	S 19° W	195 ✓	
36-37	S 29° E	95 ✓	
37-38	S 52° W	170 ✓	
38-39	S 15° W	255 ✓	
39-40	S 28° E	185 ✓	
40-41	S 85° E	200 ✓	
41-42	N 81° E	180 ✓	
42-43	N 49° E	80 ✓	Abt to Right
43-44	S 63° E	105 ✓	
44-45	S 78° E	155 ✓	
45-46	N 87° E	125 ✓	
46-47	N 43° E	120 ✓	
47-48	N 40° W	175 ✓	7th to Right
48-49	N 53° W	185 ✓	
49-50	N 30° E	170 ✓	
50-51	N 11° E	230 ✓	
51-52	N 35° W	150 ✓	
52-53	S 90° W	130 ✓	
53-54	N 60° W	180 ✓	
54-55	N 16° W	195 ✓	
55-56	N 38° W	235 ✓	
56-57	N 19° W	150 ✓	
57-58	N 40° E	240 ✓	
58-59	S 78° E	200 ✓	

81

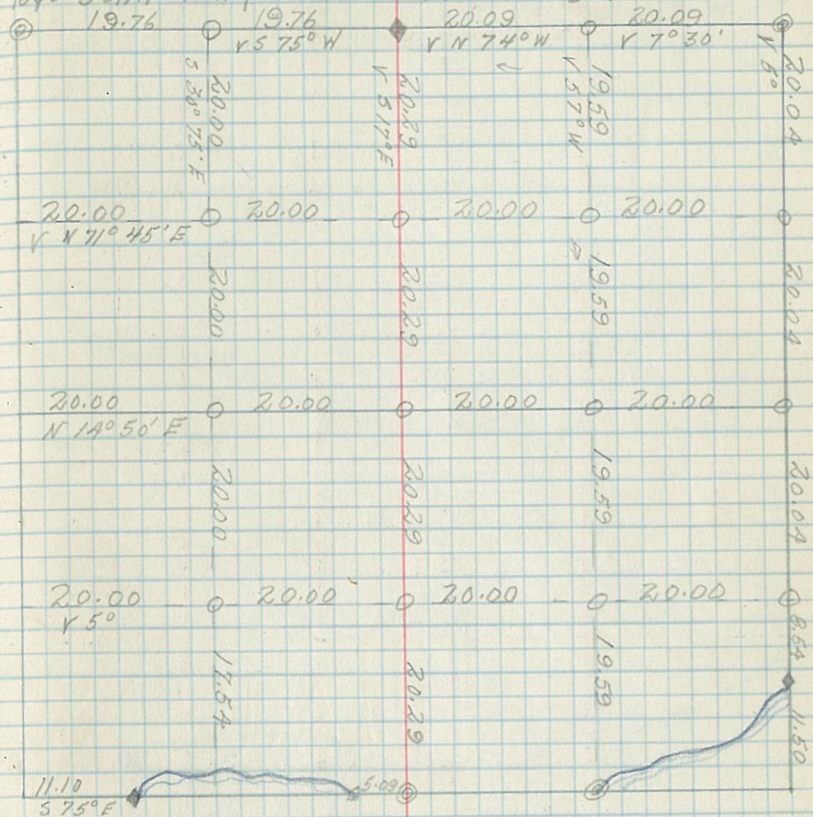
Sta.	Bear.	Dist.	Remarks
59-60	S60°E	290 ✓	Ab to Right
60-61	S79°E	335 ✓	
61-62	N32°E	355 ✓	
62-63	S86°E	300 ✓	
63-64	N11°E	260 ✓	
64-65	East	50 ✓	Close Traverse
65-66			
66-67			
67-68			
68-69			
69-70			
70-71			
71-72			
72-73			
73-74			
74-75			
75-76			
76-77			
77-78			
78-79			
79-80			
80-81			
81-82			
82-83			
83-84			
84-85			

82

Sec. 23 - T59N - R26W Hb. 7M

By - John King

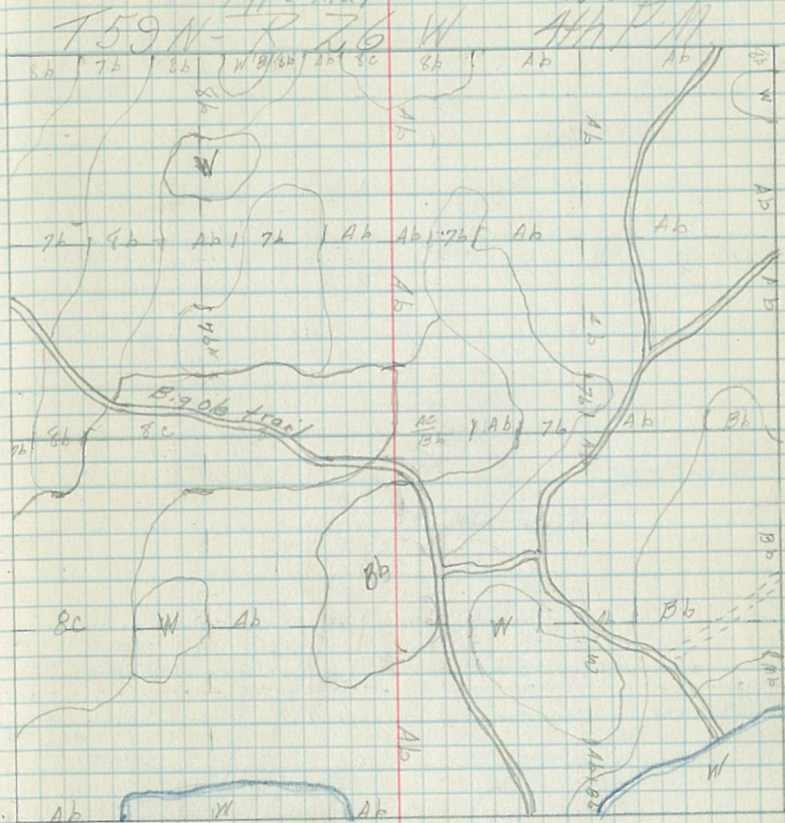
Date - 9/16/36 to 11/16/36



Bearing	Feet	Distance	Bearing	Feet	Distance	Station
Corner	Species	Dist	Corner	Species	Dist	Station

Local Attractions - lines run by pickets. Starting points only.

Type Map. Sec. 23.



93

$$\begin{array}{r} 217 \\ 13 \overline{) 2849} \end{array}$$

$$\begin{array}{r} 40.11 \\ 17 \overline{) 682} \\ \underline{68} \\ 22 \end{array}$$

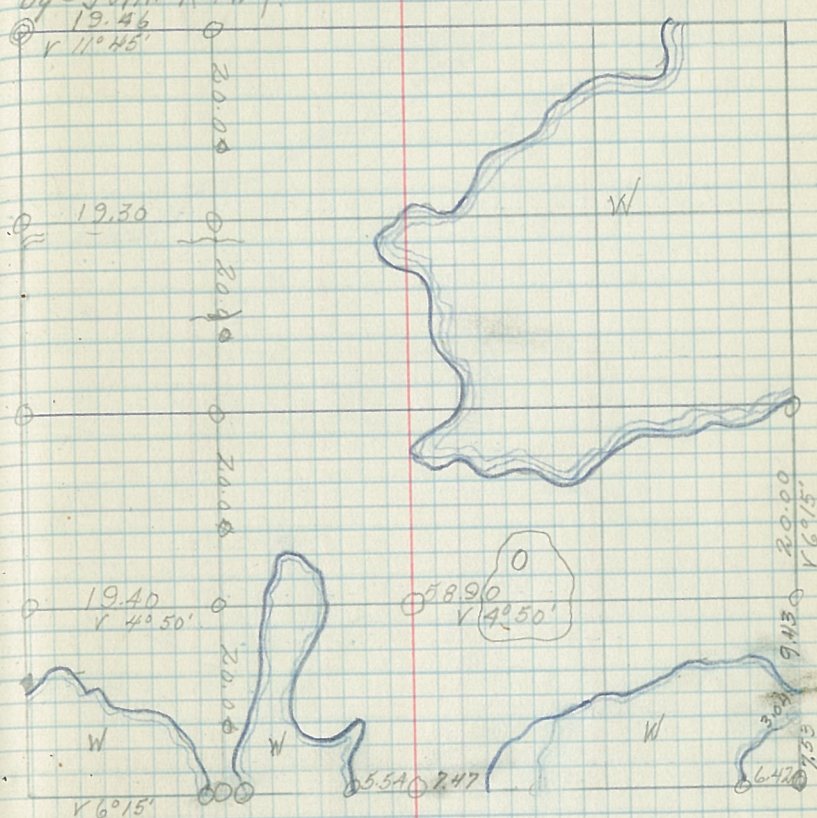
127

94

Sec. 24 T59N R26W 4th PM.

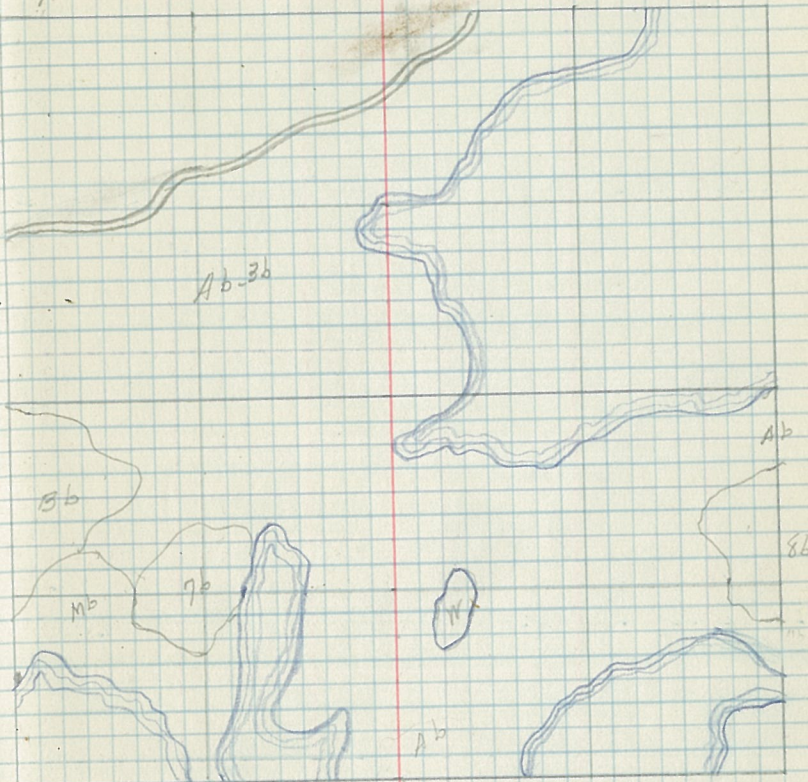
By John King.

Date



By John King

Date



Office - Dolgaard

105

123
Sec. 27-759N R26 W 4th PM. 106

By King

Date. 12-17-35

⊙ 19.78
N 11° 30'

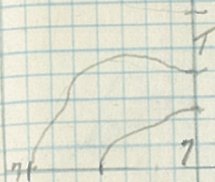
⊙ 00.00

⊙ 20.00
N 10° 30'



107

108
40
Sec. 27 T 59 N R 26 W. 4th PM.
By King Date 12-17-35



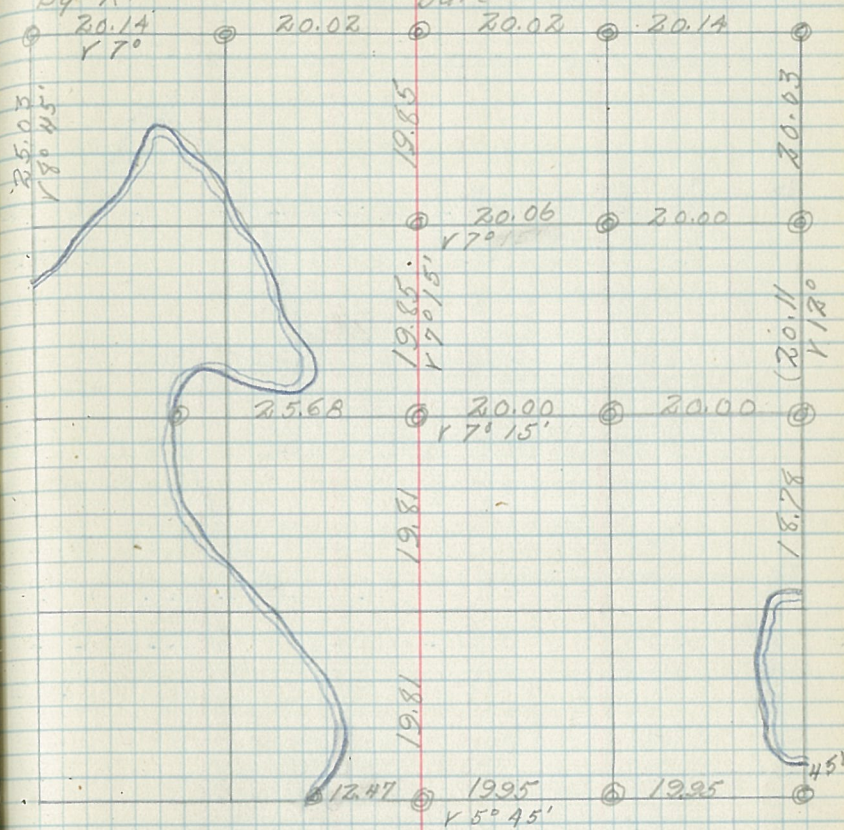
109

120

Sec: 28 7.59 N R 26 W 4th PM. 130

By K.

Date



140

111

Sec. 28 T59 R26- 446 PM.

112

140



|| { 7 } | 7#



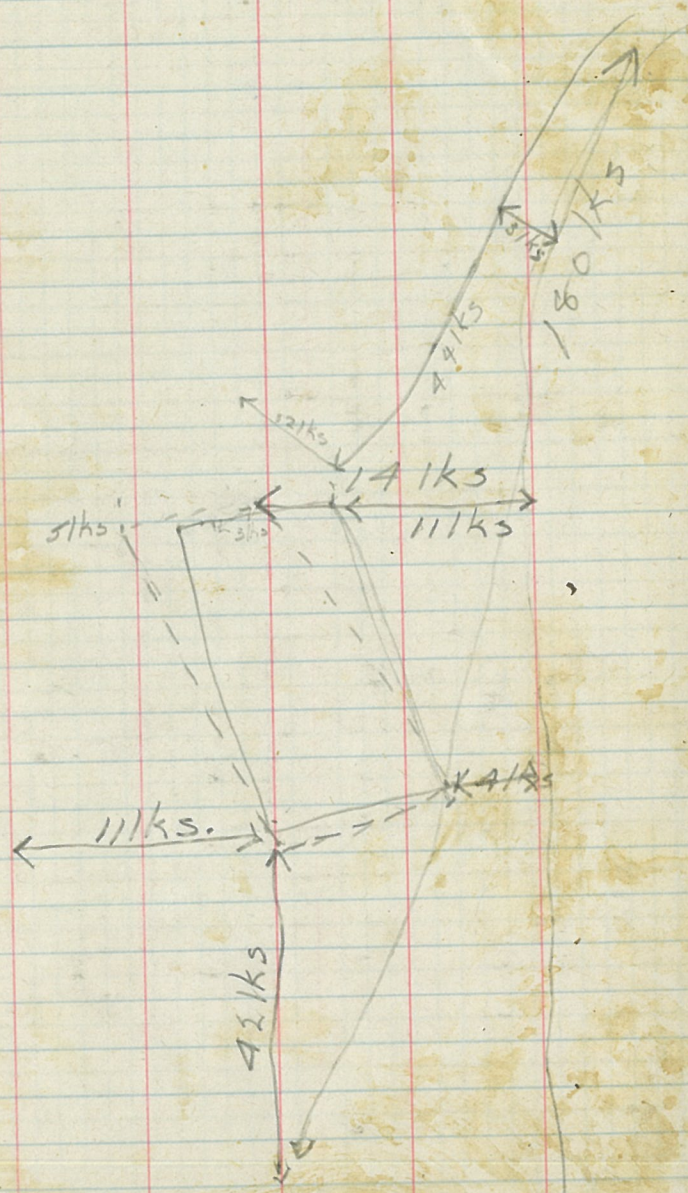
139

Sec 35 T59 R26

140

Cor. Bearing trees

	Specie	Dist	Bearing	Dist
M4	WP.	36"	N7°W	61 ch.
	Aspen	5"	S66°E	.49 ch.



Road 26 ks wide

