

OFFICE

T 59 NR 26 W

DIERZGEN
MINE

MINING

Do not film

T 59 NR 25 W

CC 50

36131 County Corner 13" x 30" scribed Post 42" x 18" Iron pipe with Cap
116 B.T. R. Pine 535°W 151ks. Form 958 on 20" Dry w Pine 260°E 291ks

1/16 #1 County Corner 3" x 3" scribed Jackpine Post
S.I. Form 958a on 19" J. Pine N85°W 371ks

1/4 1/36 County Corner 3" x 30" scribed Post leaning against S.W. B.T.
10" J. Pine 12" J. Pine
B.T.'s 531°W 101ks N63°E 421ks 2" x 36" Approx. Post in place

1/16 #2 F.S. Approx. 3" x 90" Pine Post
S.I. Form 958a on 4" Aspen 510°W 231ks

35136 F.S. Approx. 1" x 2" Post set from B.T.
211 B.T. 12" Maple 525°W 301ks.

1/16 #3 F.S. Approx. 4" x 90" Squared Spruce Post
S.I. Form 958a on 6" Aspen N20°E 81ks.

1/16 #4
S.I.

1/16 #5
S.I.

1/16 #6
S.I.

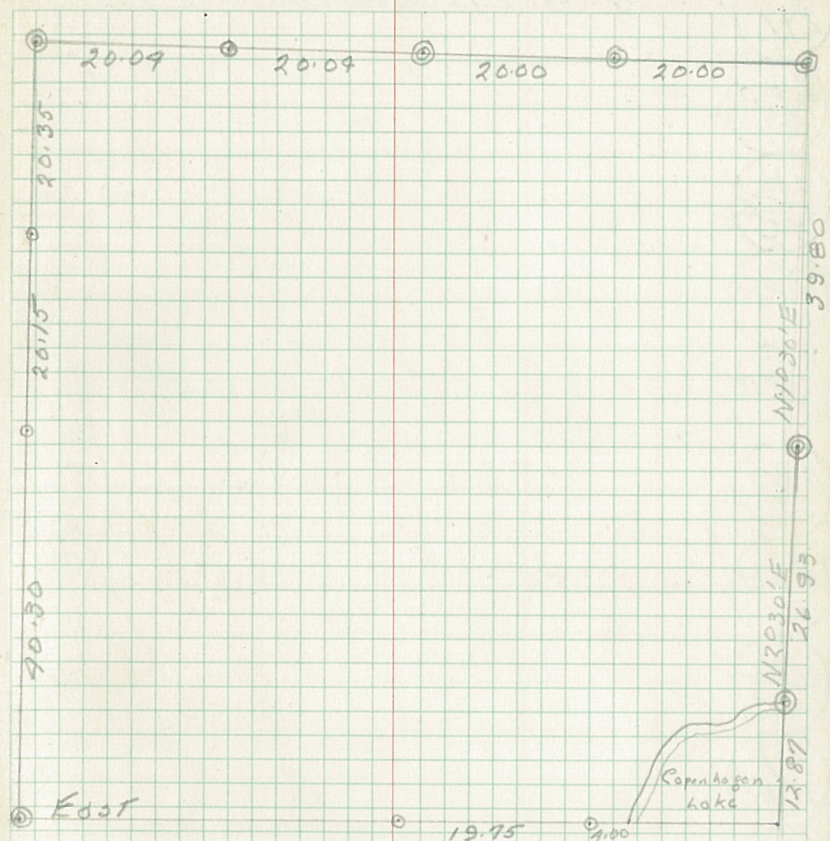
1/16 #11
S.I.

1/4 176 County Corner 2" x 3" scribed Cedar Post
B.T. 3" Cedar N79°E 51ks. Form 958a on 3" Cedar N73°W 171ks

1/16 #8
S.I.

C/4
S.I.

1/16 #9
S.I.



Note = Mean Decl 7° but heavy local attraction
Makes bearings of lines unreliable

4
271 F.S. Approx. 2" x 2' Squared Basswood Post

1/6 #10
S.I.

2/1
M.C.

1/6 #11
S.I.

1/6 #12
S.I.

1/6 #13
S.I.

1/6 #14
S.I.

1/6
M.C.

1
12/MC

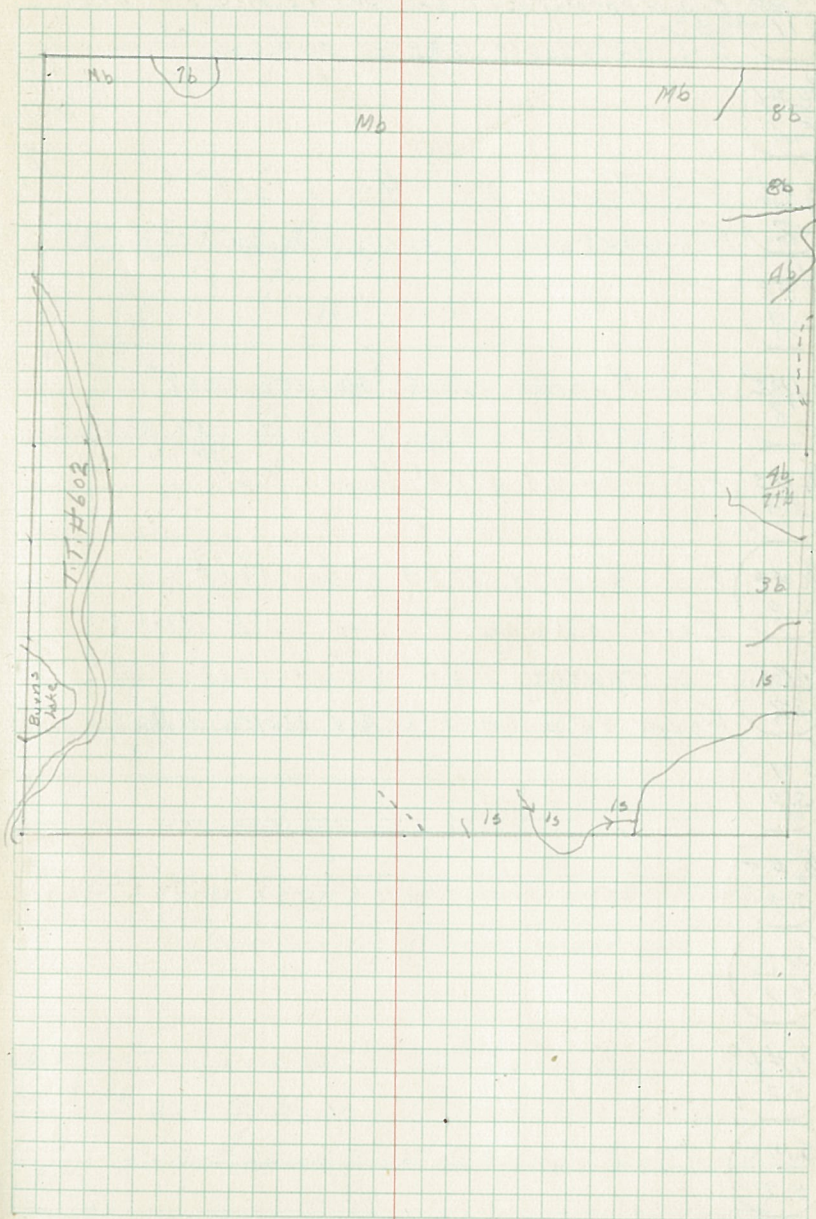
1/6 #15
S.I.

1/4
12

1/6 #16
S.I.

2/1 Probable County Cor. 1/4" x 3" x 18" Iron Bar
B.T. Pine Stamp 5590W 28/ks.

M.C.
271



35/36 F.S. Approx. Post 1" x 2' set from G.H.O. B.T.
2/1 B.T. 12" Maple S 25° W 30 kts

1/6 #1
S.2

1/4 35 F.S. Approx. 3" x 3' Aspen Post
2 Form 458 on 6" Aspen N 35° W 7 kts.

1/6 #2
S.2

39/35 F.S. Approx. 3" x 3' Spruce Post
3/2 Form 458 on 6" Spruce South 50 kts

1/6 #3
S.2 F.S. Approx. 3" x 3' Aspen Post

1/6 #4
S.2 F.S. Approx 3" x 3' Cedar Post
Form 458 on 8" Aspen S 30° E 19 kts

S.M.C. F.S. Approx 2" x 4' Cedar Post
S.2 Form 458 on 7" Cedar N 21° W 11 kts

S.M.C.
S.2

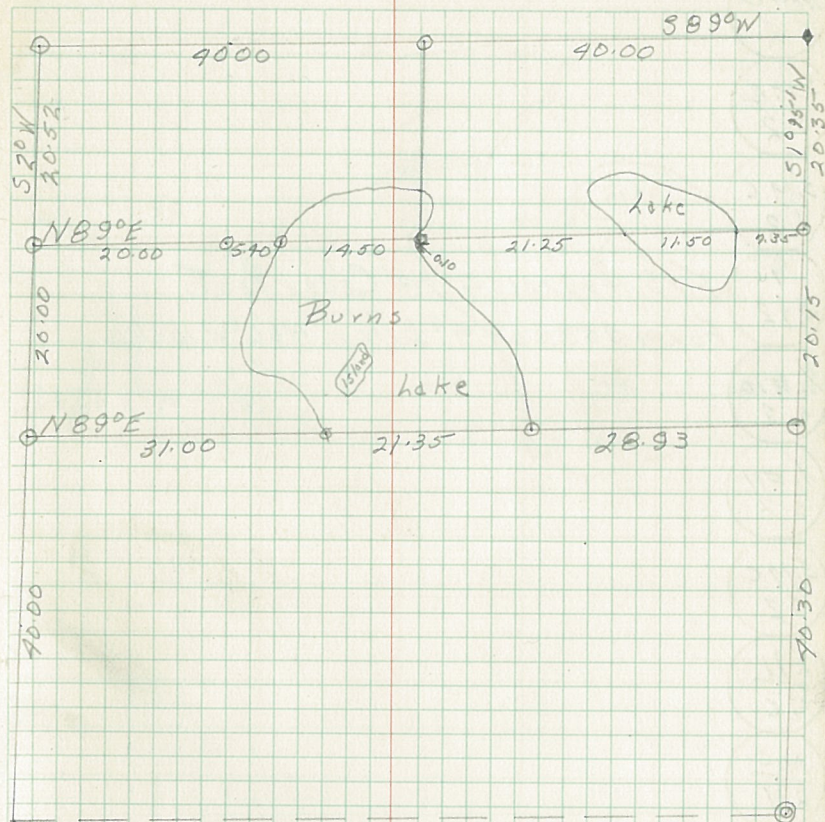
1/6 #5
S.2

S.M.C.
S.2

1/6 #6
S.2

S.M.C.
S.2

S.M.C.
S.2



Note = Mean Decl. 7° but heavy local attraction
makes bearing of lines unreliable

1/6 #7
S.2 F.S. Approx 4" x 40' Square Spruce Post
Form 458 on 6" Aspen N 20° E 8 kts.

1/4
2/1 F.S. Approx. 2" x 2' Basswood Post

1/6 #8
S.2

S.M.C.
S.2

S.M.C.
S.2

4
3+2 F.S. Approx. 4"x4" Cedar Post.
Form 958 on 4" Birch N60°W 161Ks

1/6 #10
S.2

1/6 #11
S.2

S.M.C.
S.2

3/1
M.C.

M.C.
2/1

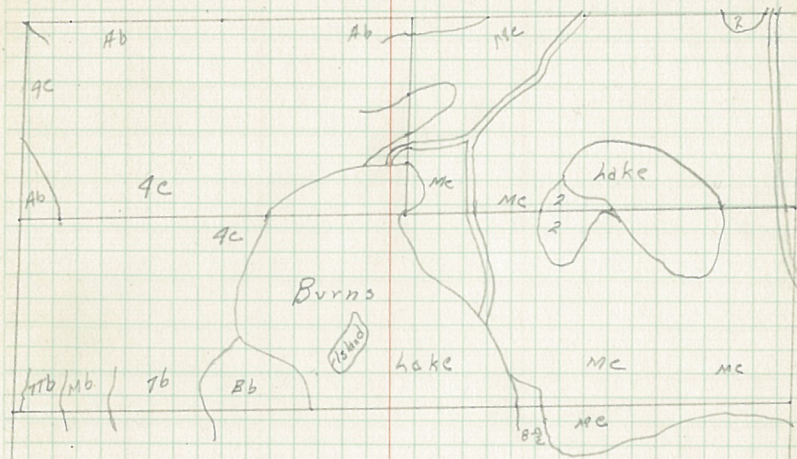
3/1
11/12 Probable County Corner 1/2"x3"x12" Iron Bar
B.T. Pine Stamp S57°W 281Ks

M.C. 3/11

3/1
11/M.C.

M.C. 3/11

3/1
11/M.C.



S.M.C.
S.2

1/6 #16
S.2

3/2
10/11

1/12 M.C.

1/6 #1 F.S. Approx. 2" x 3' Cedar Post
S. 12 Form 458a on 6" Balsam of Gilead 360°E 191ks

1/4 1/12 F.S. Approx. 2" x 3' Aspen Post
Form 458 on 16" B. Pine N36°W 211ks

1/6 #2
S. 12

3/11/12

1/6 #3
S. 12

S.M.C.
S. 12

S.M.C.
S. 12

S.M.C.
S. 12

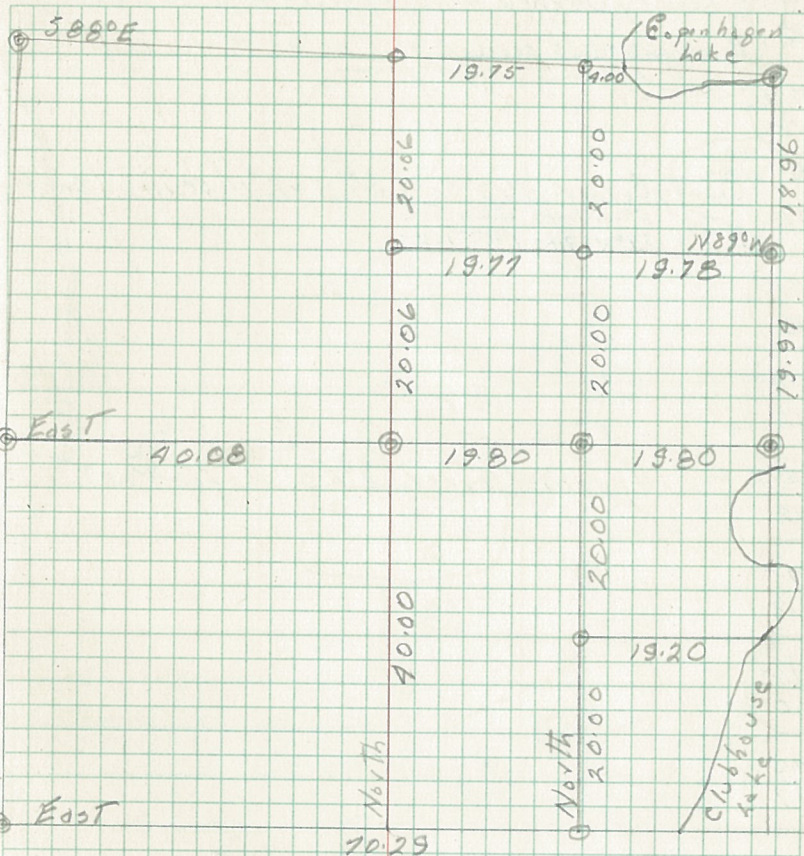
S.M.C.
S. 12

1/6 #5 F.S. Approx. 2" x 3' Aspen Post
S. 12 Form 458a on 5" S. Pine 348°E 821ks

1/6 #6
S. 12

1/6 #7 County Corner 3" x 3' scribed Post
S. 12

M.C. County Corner 1 1/2" Iron Pipe 6" Above Water
3' scribed Post 3' out of Water
12/7 B.T.S. 6" Aspen 330°E 871ks Fallen Cedar Stub 531°E 491ks



Note = Heavy local Attraction makes bearings unreliable

1/12/7

1/6 #8 County Corner 3" x 3' Approx. Aspen Post
S. 12 B.S. 4" S. Pine stub N19°E 311ks

C/A County Corner 3"X3' Approx. Aspen Post
S.12 Remains of old scribed post nailed to new post.

1/6 #9
S.12

1/4 County Corner. 3"X3' Scribed Post 4 1/2"X1' 30 cornered Iron Pin
11/7/12 5" W. Birch Birch stub
B.T's 59°W 29'ks N18°E 15'ks

1/6 #10
S.12

1/6 #11
S.12

1/6 #13 F.S. Approx. Corner. 2"X3' Aspen Post
S.12

S.M.C.
S.12

12/12
M.C.

M.C.
12/17

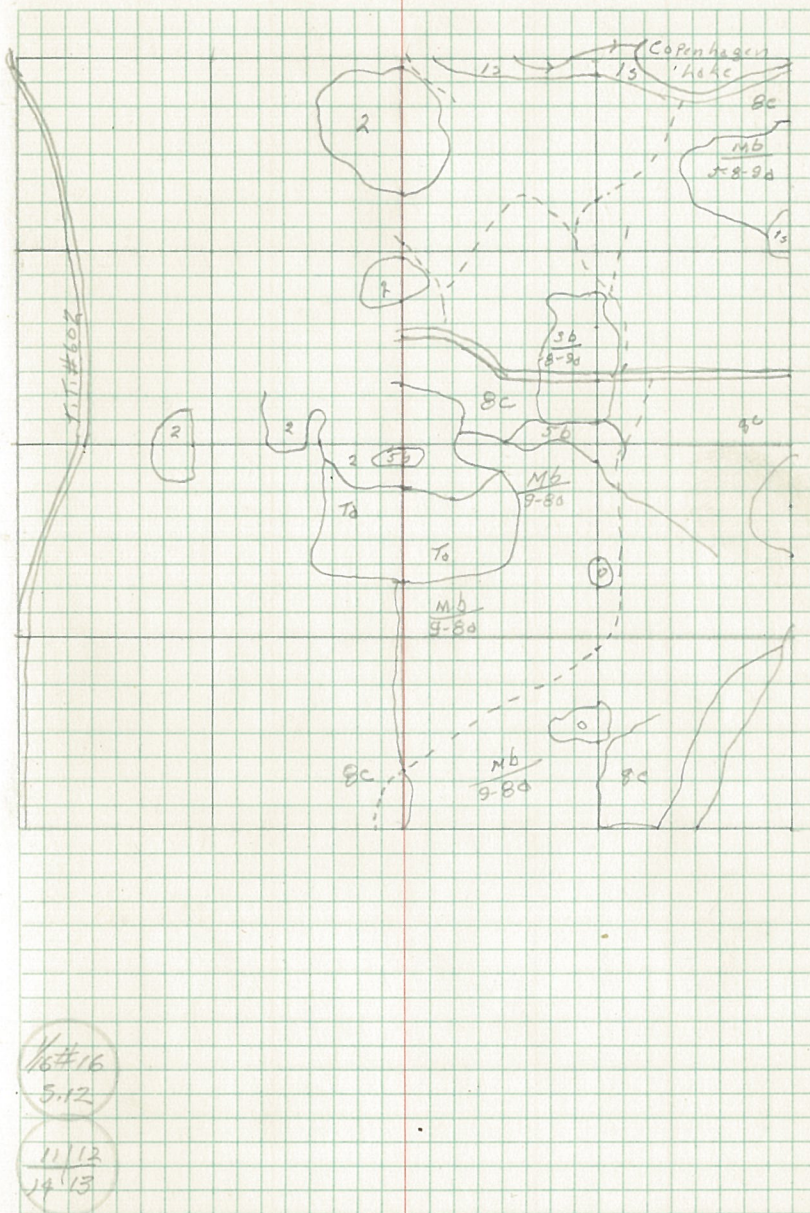
13/12
M.C.

13/1
13/M.C.

1/6 #15 F.S. Approx. 2"X3' Aspen Post.
S.12

1/4 12
13

1/6 #12 F.S. Approx. 2"X3' Aspen Post
S.12



1/6 #16
S.12

11/12
14/13