

FIELD

T. 59 N. R. 26 W.

DIETZGEN  
MINING

MINING  
TRANSFER BOOK

No. 1020

T 59 NR 25 W

CCC 49



36/31  
176 County Corner. 3" x 30' Scribed Post + 2" x 18" Iron pipe with Cap  
20" Dry W. Pine  
B.T. P. Pine stub 535°W 15 kts. Form 458 on 560°E 79 kts

1/6 #1  
5.1 County Corner. 3" x 36" Scribed J. Pine Post  
Form 458 on 14" J. Pine N85°W 37 kts.

1/4  
36 County Cor. 3" x 30" Scribed Post leaning against B.T.  
10" J. Pine 12" J. Pine  
B.T. 536°W 10 kts. N62°E 92 kts. 2" x 36" Approx Post in Place.

1/6 #2  
5.1 F.S. Approx. 3" x 40" Pine Post.  
Form 458 on 9" Aspen 510°W 23 kts.

35/36  
21 F.S. Approx. Post 1" x 2' set from G.H.A. B.T.  
B.T. 12" Maple 525°W 30 kts.

1/6 #3  
5.1 F.S. Approx. 4" x 40" Squared Spruce Post  
Form 458 on 6" Aspen N20°E 8 kts.

1/6 #4  
5.1

1/6 #5  
5.1

1/6 #6  
5.1

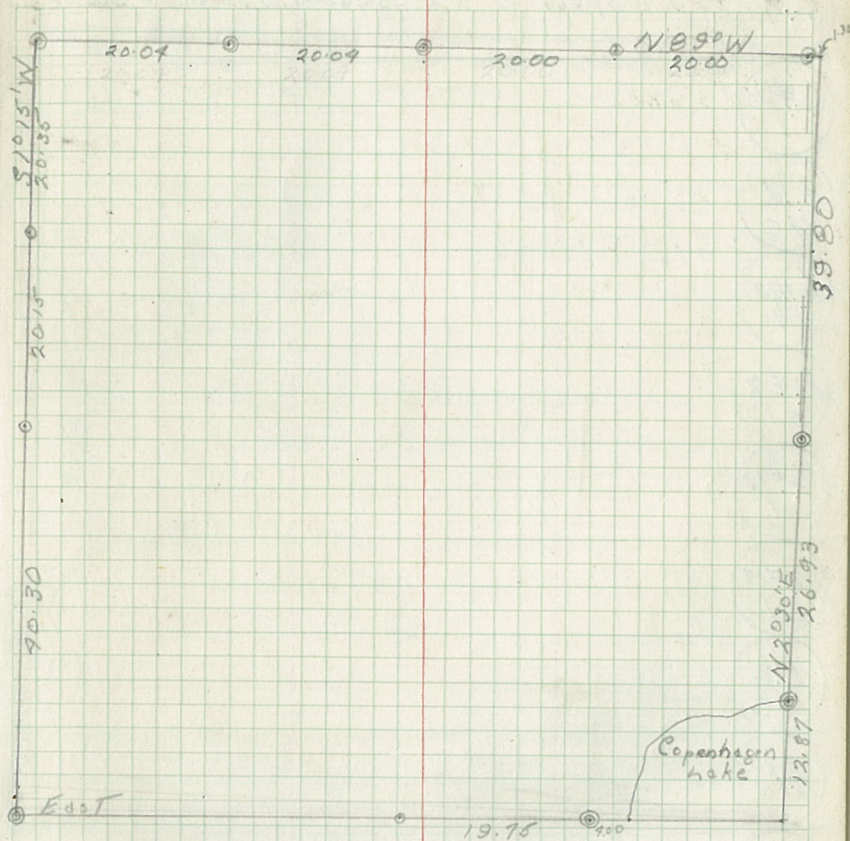
1/6 #7  
5.1

1/4  
176 County Corner. 2" x 36" Scribed Cedar Post  
B.T. 8" Cedar N79°E 5 kts Form 458 on 3" Cedar N73°W 171 kts

1/6 #8  
5.1

C. 1/4  
5.1

1/6 #9  
5.1



Note = Mean Decl. 7° but heavy local attraction makes bearings not dependable.



$\frac{1}{4}$   
2+1 F.S. Approx. 2" X 2' Squared Basswood Stake

$\frac{1}{16}$  #10  
S.I.

$\frac{2}{1}$   
M.C.

$\frac{1}{16}$  #11  
S.I.

$\frac{1}{16}$  #12  
S.I.

$\frac{1}{16}$  #13  
S.I.

$\frac{1}{16}$  #14  
S.I.

$\frac{1}{16}$   
M.C.

$\frac{1}{12}$  M.C.

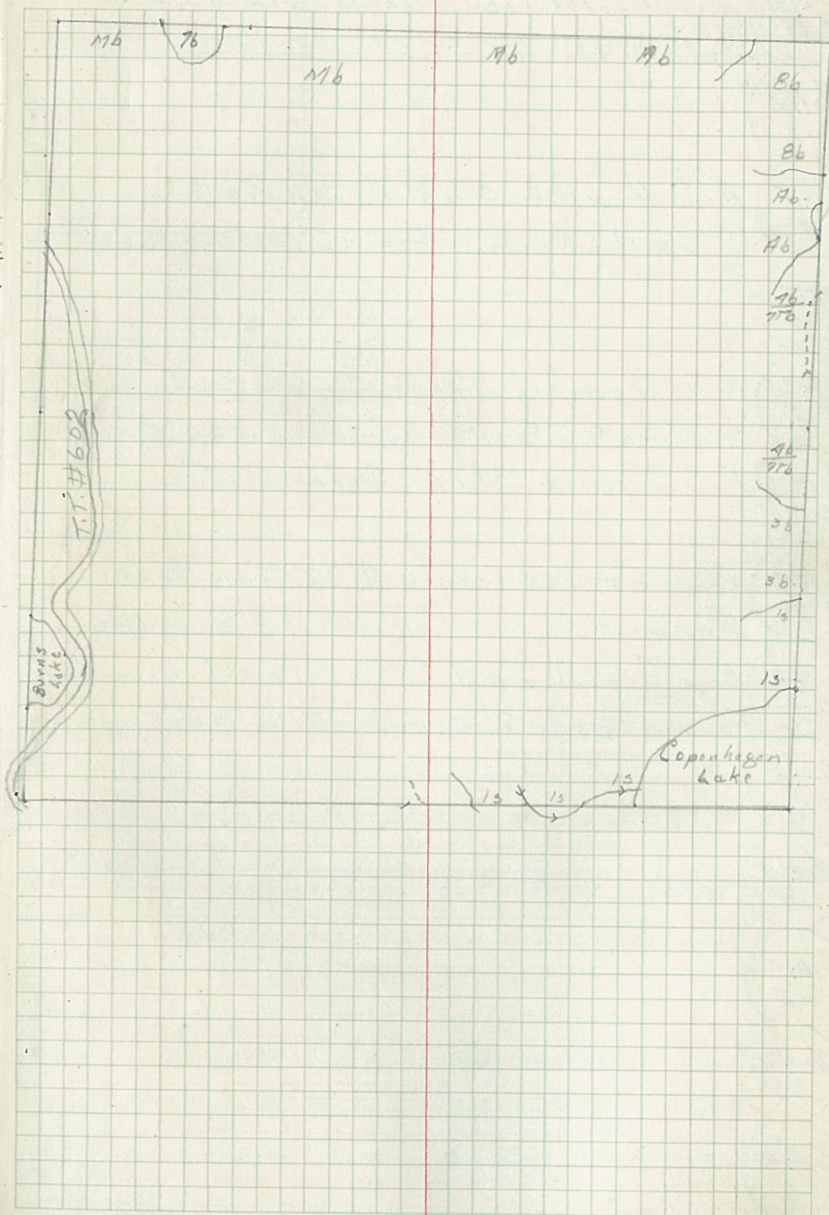
$\frac{1}{16}$  #15  
S.I.

$\frac{1}{4}$   
 $\frac{1}{12}$

$\frac{1}{16}$  #16  
S.I.

$\frac{2}{1}$   
 $\frac{11}{12}$  Probable County Cor.  $14' \times 13' \times 18'$  Iron bar Set from B.T.  
B.T. Pine Stump 3570W 281ks.

M.C.  
 $\frac{2}{1}$





35/36 F.S. Approx. Post 7" x 2' set from E. L. O. B.T.  
2/1 B.T. 12" Maple S 25° W 30 k/s

1/6 #1  
5.2

1/4 35 F.S. Approx. 3" x 3' Aspen Post  
2 Form 458 on 6" Aspen N 35° W 7 k/s.

1/6 #2  
5.2

39/35 F.S. Approx. 3" x 3' Spruce Post.  
3/2 Form 458 on 8" Spruce South 50 k/s

1/6 #3 F.S. Approx. 3" x 3' Aspen Post.  
5.2

1/6 #4 F.S. Approx. Corner. 3" x 3' Cedar Post.  
5.2 Form 458 on 8" Aspen S 30° E 18 k/s.

S.M.C. F.S. Approx. 2" x 4' Cedar Post  
5.2 Form 458 on 7" cedar N 21° W 11 k/s

S.M.C.  
5.2

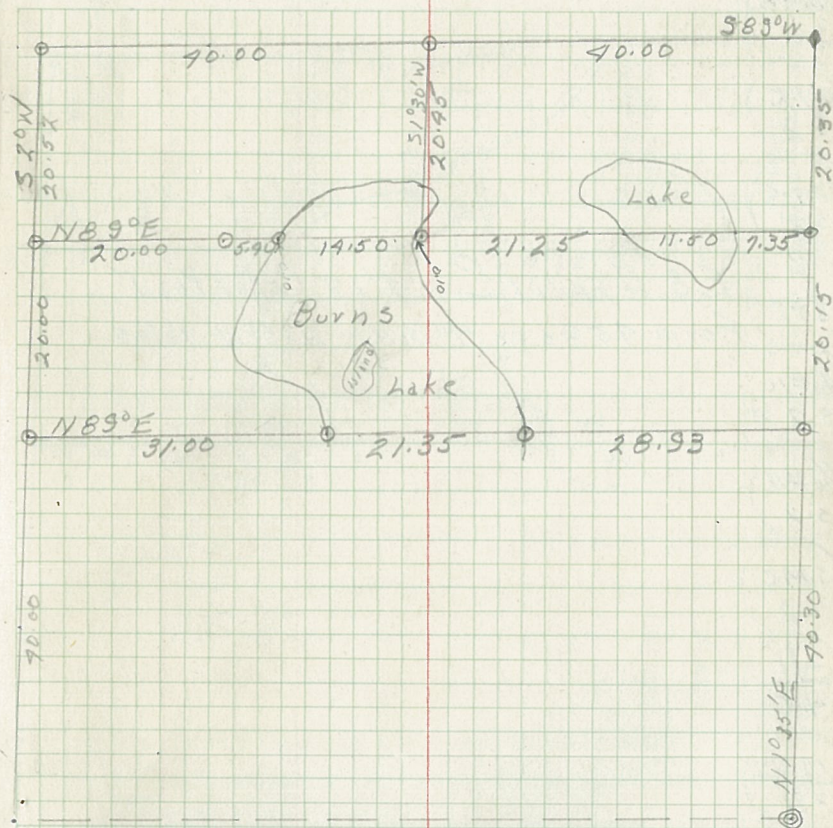
1/6 #5  
5.2

S.M.C.  
5.2

1/6 #16  
5.2

S.M.C.  
5.2

S.M.C.  
5.2



Note = Mean Decl 7° but heavy local attraction makes bearings of line unreliable.

1/6 #7 F.S. Approx. 4" x 90" Square Spruce Post  
5.2 Form 458 on 6" Aspen N 20° E 8 k/s

1/4 2/1 F.S. Approx. 2" x 2' Square Basswood Post



1/6#8  
S.2

S.M.C.  
S.2

S.M.C.  
S.2

1/4 F.S. Approx. Cor. 4" x 9' Cedar Post  
3/2 Form 4580 on 4" Birch N60°W 161ks.

1/6#10  
S.2

1/6#11  
S.2

S.M.C.  
S.2

2/1  
M.C.

M.C.  
2/1

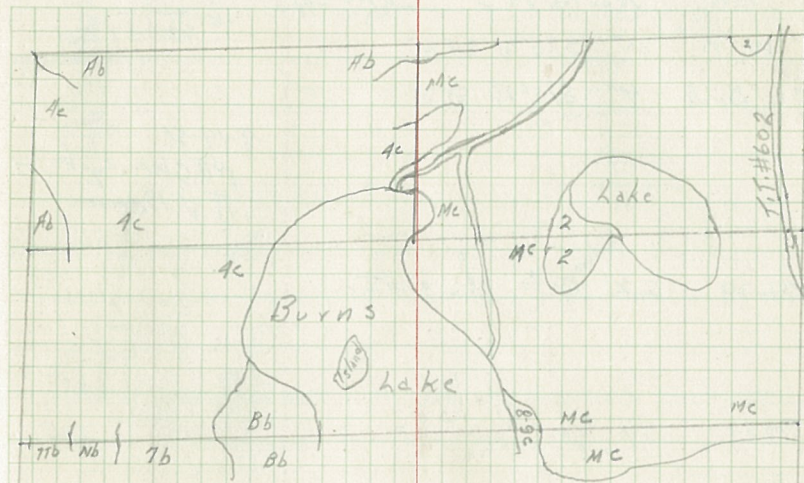
2/1 Probable County Corner. 1/2" x 3" x 18" Iron Bar  
11/12 B.T. Pine 3Tump S57°W 281ks.

M.C. 3/11

2/11/M.C.

M.C. 3/11

2/11/M.C.



S.M.C.  
S.2

1/6#16  
S.2

3/2  
10/11



$\frac{66}{20}$   
 13.20  
 North MC 3'  
 I.P. + Cap  
 W.T.P. 20" S80°W 29'2"  
 Bink 4" S15°E 57'5"

T59  
 MC  
 $\frac{52}{57}$   
 R25

8-14-56  
 P.H. Christopherson  
 J.V. Benson

7779 22' E to MC + water

7705 44' to W

6705 56' to water

5705 47'

4700 45' to W

3700 26' to water

2700 34' to water

1750 39' to water

1703 21' to NE Corn Blg  
 1700 35' to water

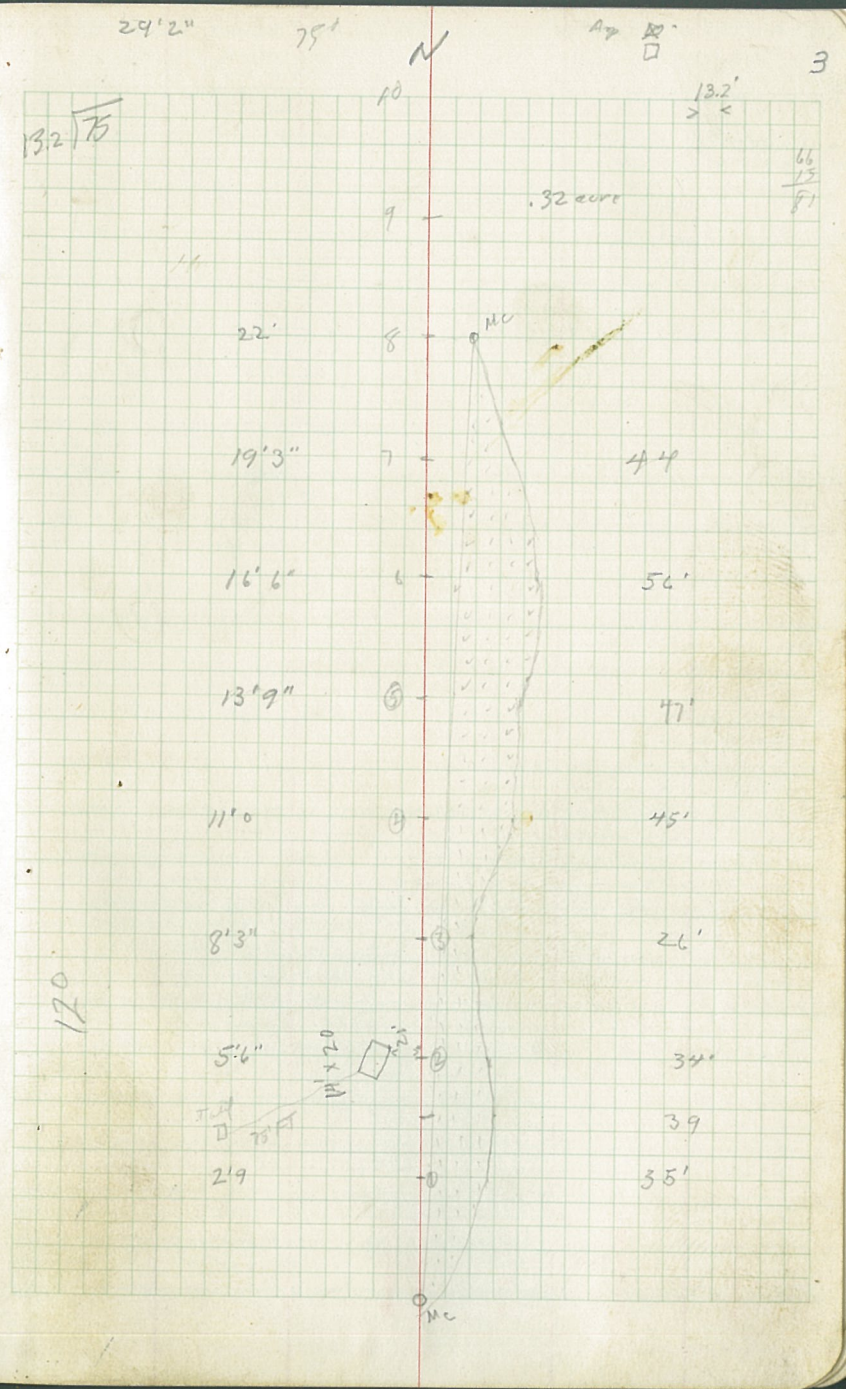
MC  
 W.P. 20" S58°W 20'9"  
 B1 6' N30°W 12'6"

R26W T59N  
 $\frac{52}{57}$   
 MC R25W

Lot 2 12'

Lot 6 27'

(Burk  
 Residence  
 Trespass  
 on  
 Clubhouse Lake





|   | DBH | #logs | C-11 BF | Gross volume | Net volume |
|---|-----|-------|---------|--------------|------------|
| W | 17" | 3½    | 50      | 220          | 170        |
|   | 20" | 3½    | 20      | 300          | 280        |
|   | 21" | 3½    | 0       | 330          | 330        |
|   | 18" | 3½    | 0       | 250          | 250        |
|   | 20" | 2½    | 90      | 210          | 120        |
|   | 22" | 3½    | 0       | 350          | 350        |
| R | 16" | 3½    | 0       | 230          | 230        |
|   |     |       |         |              | 1730       |

8-14-56

RHC

J.V.B.

100% estimate of volume  
on lot 6 Sect. 7 T59N R25 West

Balsam

Spruce

Birch top. <sup>4</sup>

6" - 1

7" 2

17

6" 2

8" 2

8" 2

8" 2

6" 1

6" 1

6" 2

6" 2







4754.3

Set up compass + turned 90° angle from 4754.3 Ms  
South of MC

Ran 200' to West on N 83° 30' W

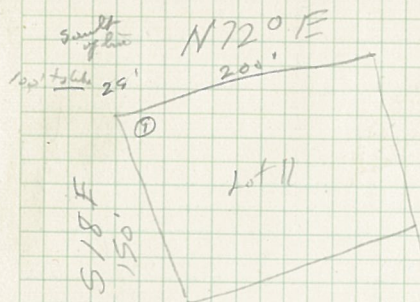
Ran N to lake on N 60° 30' E 4 chs 19.7 LMs  
(277')

4754.3 Ms (300' Set up compass

South from MC

5





North Star 6  
Sub Unit

#1 cor of lot is  
100 FT from lot  
(on lot line between  
orig. gov't lots 6-7)  
+ is 25' south of  
line. Iron pipes in  
at all 4 corners.



0+00 at MC

$\frac{33}{4}$  West side of East  
arm of N. Str.

— Edge of road 408 FT  
— 4+00

— 3+00  
Level to road.  
— Top of hill

— 2+00

— 1+00















3.5 1.2 154 to 1m

728' - 100' - 228' 327

8

