

LINEAL SURVEY

T. 58 N., R. 27 W. 4TH. P.M.

MINING
TRANSIT BOOK

CCC 48

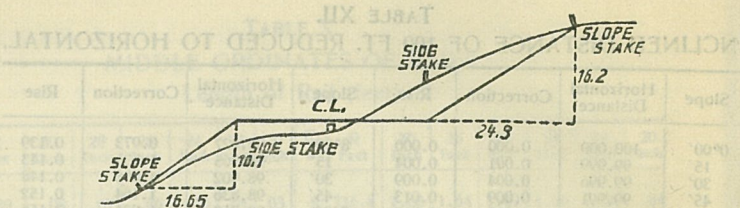
This book posted from Corner
Reports, Feb 6, 1937

B.C.

TABLES FOR EXCAVATIONS AND EMBANKMENTS.

DISTANCES FROM CENTER OF ROADWAY FOR CROSS-SECTIONING.
ROADWAY 18 FEET WIDE. SIDE SLOPES 1 TO 1.
FOR SINGLE TRACK EXCAVATION.

	0	.1	.2	.3	.4	.5	.6	.7	.8	.9	
0	9.0	9.1	9.2	9.3	9.4	9.5	9.6	9.7	9.8	9.9	0
1	10.0	10.1	10.2	10.3	10.4	10.5	10.6	10.7	10.8	10.9	1
2	11.0	11.1	11.2	11.3	11.4	11.5	11.6	11.7	11.8	11.9	2
3	12.0	12.1	12.2	12.3	12.4	12.5	12.6	12.7	12.8	12.9	3
4	13.0	13.1	13.2	13.3	13.4	13.5	13.6	13.7	13.8	13.9	4
5	14.0	14.1	14.2	14.3	14.4	14.5	14.6	14.7	14.8	14.9	5
6	15.0	15.1	15.2	15.3	15.4	15.5	15.6	15.7	15.8	15.9	6
7	16.0	16.1	16.2	16.3	16.4	16.5	16.6	16.7	16.8	16.9	7
8	17.0	17.1	17.2	17.3	17.4	17.5	17.6	17.7	17.8	17.9	8
9	18.0	18.1	18.2	18.3	18.4	18.5	18.6	18.7	18.8	18.9	9
10	19.0	19.1	19.2	19.3	19.4	19.5	19.6	19.7	19.8	19.9	10
11	20.0	20.1	20.2	20.3	20.4	20.5	20.6	20.7	20.8	20.9	11
12	21.0	21.1	21.2	21.3	21.4	21.5	21.6	21.7	21.8	21.9	12
13	22.0	22.1	22.2	22.3	22.4	22.5	22.6	22.7	22.8	22.9	13
14	23.0	23.1	23.2	23.3	23.4	23.5	23.6	23.7	23.8	23.9	14
15	24.0	24.1	24.2	24.3	24.4	24.5	24.6	24.7	24.8	24.9	15
16	25.0	25.1	25.2	25.3	25.4	25.5	25.6	25.7	25.8	25.9	16
17	26.0	26.1	26.2	26.3	26.4	26.5	26.6	26.7	26.8	26.9	17
18	27.0	27.1	27.2	27.3	27.4	27.5	27.6	27.7	27.8	27.9	18
19	28.0	28.1	28.2	28.3	28.4	28.5	28.6	28.7	28.8	28.9	19
20	29.0	29.1	29.2	29.3	29.4	29.5	29.6	29.7	29.8	29.9	20
21	30.0	30.1	30.2	30.3	30.4	30.5	30.6	30.7	30.8	30.9	21
22	31.0	31.1	31.2	31.3	31.4	31.5	31.6	31.7	31.8	31.9	22
23	32.0	32.1	32.2	32.3	32.4	32.5	32.6	32.7	32.8	32.9	23
24	33.0	33.1	33.2	33.3	33.4	33.5	33.6	33.7	33.8	33.9	24
25	34.0	34.1	34.2	34.3	34.4	34.5	34.6	34.7	34.8	34.9	25
26	35.0	35.1	35.2	35.3	35.4	35.5	35.6	35.7	35.8	35.9	26
27	36.0	36.1	36.2	36.3	36.4	36.5	36.6	36.7	36.8	36.9	27
28	37.0	37.1	37.2	37.3	37.4	37.5	37.6	37.7	37.8	37.9	28
29	38.0	38.1	38.2	38.3	38.4	38.5	38.6	38.7	38.8	38.9	29
30	39.0	39.1	39.2	39.3	39.4	39.5	39.6	39.7	39.8	39.9	30
31	40.0	40.1	40.2	40.3	40.4	40.5	40.6	40.7	40.8	40.9	31
32	41.0	41.1	41.2	41.3	41.4	41.5	41.6	41.7	41.8	41.9	32
33	42.0	42.1	42.2	42.3	42.4	42.5	42.6	42.7	42.8	42.9	33
34	43.0	43.1	43.2	43.3	43.4	43.5	43.6	43.7	43.8	43.9	34
35	44.0	44.1	44.2	44.3	44.4	44.5	44.6	44.7	44.8	44.9	35
36	45.0	45.1	45.2	45.3	45.4	45.5	45.6	45.7	45.8	45.9	36



DISTANCES FROM SIDE STAKES FOR CROSS-SECTIONING.

SLOPE 1½ TO 1. ROADWAY OF ANY WIDTH.

	0	.1	.2	.3	.4	.5	.6	.7	.8	.9	
0	0.00	0.15	0.30	0.45	0.60	0.75	0.90	1.05	1.20	1.35	0
1	1.50	1.65	1.80	1.95	2.10	2.25	2.40	2.55	2.70	2.85	1
2	3.00	3.15	3.30	3.45	3.60	3.75	3.90	4.05	4.20	4.35	2
3	4.50	4.65	4.80	4.95	5.10	5.25	5.40	5.55	5.70	5.85	3
4	6.00	6.15	6.30	6.45	6.60	6.75	6.90	7.05	7.20	7.35	4
5	7.50	7.65	7.80	7.95	8.10	8.25	8.40	8.55	8.70	8.85	5
6	9.00	9.15	9.30	9.45	9.60	9.75	9.90	10.05	10.20	10.35	6
7	10.50	10.65	10.80	10.95	11.10	11.25	11.40	11.55	11.70	11.85	7
8	12.00	12.15	12.30	12.45	12.60	12.75	12.90	13.05	13.20	13.35	8
9	13.50	13.65	13.80	13.95	14.10	14.25	14.40	14.55	14.70	14.85	9
10	15.00	15.15	15.30	15.45	15.60	15.75	15.90	16.05	16.20	16.35	10
11	16.50	16.65	16.80	16.95	17.10	17.25	17.40	17.55	17.70	17.85	11
12	18.00	18.15	18.30	18.45	18.60	18.75	18.90	19.05	19.20	19.35	12
13	19.50	19.65	19.80	19.95	20.10	20.25	20.40	20.55	20.70	20.85	13
14	21.00	21.15	21.30	21.45	21.60	21.75	21.90	22.05	22.20	22.35	14
15	22.50	22.65	22.80	22.95	23.10	23.25	23.40	23.55	23.70	23.85	15
16	24.00	24.15	24.30	24.45	24.60	24.75	24.90	25.05	25.20	25.35	16
17	25.50	25.65	25.80	25.95	26.10	26.25	26.40	26.55	26.70	26.85	17
18	27.00	27.15	27.30	27.45	27.60	27.75	27.90	28.05	28.20	28.35	18
19	28.50	28.65	28.80	28.95	29.10	29.25	29.40	29.55	29.70	29.85	19
20	30.00	30.15	30.30	30.45	30.60	30.75	30.90	31.05	31.20	31.35	20
21	31.50	31.65	31.80	31.95	32.10	32.25	32.40	32.55	32.70	32.85	21
22	33.00	33.15	33.30	33.45	33.60	33.75	33.90	34.05	34.20	34.35	22
23	34.50	34.65	34.80	34.95	35.10	35.25	35.40	35.55	35.70	35.85	23
24	36.00	36.15	36.30	36.45	36.60	36.75	36.90	37.05	37.20	37.35	24
25	37.50	37.65	37.80	37.95	38.10	38.25	38.40	38.55	38.70	38.85	25
26	39.00	39.15	39.30	39.45	39.60	39.75	39.90	40.05	40.20	40.35	26
27	40.50	40.65	40.80	40.95	41.10	41.25	41.40	41.55	41.70	41.85	27
28	42.00	42.15	42.30	42.45	42.60	42.75	42.90	43.05	43.20	43.35	28
29	43.50	43.65	43.80	43.95	44.10	44.25	44.40	44.55	44.70	44.85	29
30	45.00	45.15	45.30	45.45	45.60	45.75	45.90	46.05	46.20	46.35	30
31	46.50	46.65	46.80	46.95	47.10	47.25	47.40	47.55	47.70	47.85	31
32	48.00	48.15	48.30	48.45	48.60	48.75	48.90	49.05	49.20	49.35	32
33	49.50	49.65	49.80	49.95	50.10	50.25	50.40	50.55	50.70	50.85	33
34	51.00	51.15	51.30	51.45	51.60	51.75	51.90	52.05	52.20	52.35	34
35	52.50	52.65	52.80	52.95	53.10	53.25	53.40	53.55	53.70	53.85	35
36	54.00	54.15	54.30	54.45	54.60	54.75	54.90	55.05	55.20	55.35	36
37	55.50	55.65	55.80	55.95	56.10	56.25	56.40	56.55	56.70	56.85	37
38	57.00	57.15	57.30	57.45	57.60	57.75	57.90	58.05	58.20	58.35	38
39	58.50	58.65	58.80	58.95	59.10	59.25	59.40	59.55	59.70	59.85	39
40	60.00	60.15	60.30	60.45	60.60	60.75	60.90	61.05	61.20	61.35	40
41	61.50	61.65	61.80	61.95	62.10	62.25	62.40	62.55	62.70	62.85	41
42	63.00	63.15	63.30	63.45	63.60	63.75	63.90	64.05	64.20	64.35	42
43	64.50	64.65	64.80	64.95	65.10	65.25	65.40	65.55	65.70	65.85	43
44	66.00	66.15	66.30	66.45	66.60	66.75	66.90	67.05	67.20	67.35	44
45	67.50	67.65	67.80	67.95	68.10	68.25	68.40	68.55	68.70	68.85	45
46	69.00	69.15	69.30	69.45	69.60	69.75	69.90	70.05	70.20	70.35	46
47	70.50	70.65	70.80	70.95	71.10	71.25	71.40	71.55	71.70	71.85	47
48	72.00	72.15	72.30	72.45	72.60	72.75	72.90	73.05	73.20	73.35	48
49	73.50	73.65	73.80	73.95	74.10	74.25	74.40	74.55	74.70	74.85	49
50	75.00	75.15	75.30	75.45	75.60	75.75	75.90	76.05	76.20	76.35	50

INDEX

Town 58 N R 27 W-4th PM

Section Page

1	4-7
2	8-11
3	12-15
4	16-19
5	20-23
6	24-27
7	28-31
8	32-35
9	36-39
10	40-43
11	44-47
12	48-51
13	52-55
14	56-59
15	60-63
16	64-67
17	68-71
18	72-75
19	76-79
20	80-83
21	84-87

Section	Page
---------	------

22	88-91
----	-------

23	92-95
----	-------

24	96-99
----	-------

25	100-103
----	---------

26	104-107
----	---------

27	108-111
----	---------

28	112-115
----	---------

29	116-119
----	---------

30	120-123
----	---------

31	124-127
----	---------

32	128-131
----	---------

33	132-135
----	---------

34	136-139
----	---------

35	140-143
----	---------

36	144-147
----	---------

T57N	R27W
------	------

1	147-150
---	---------

2	150-153
---	---------

52

Notes.

Sec. 13 - 58-27

53

11

①

①

14.81
10.10W

20.18

20.09

N 4 E

Bearing trees			Bearing trees		
Col. Species	Bearing Dist	Dist	Col. Species	Bearing Dist	Dist

54

Notes

55

Type map - Sec. 13 - 58 N - 27 W.

134-

Notes

Sec. 14 T58N - R27W 4th P.M.

By - King
Peterson

Date: 11/26/35

Cor.	Bearing trees				Bearing trees			
	Species	DBH	Bearing	Distance	Species	DBH	Bearing	Distance
N $\frac{1}{2}$	Maple	14"	N42E	47Ls				
E $\frac{1}{2}$	Birch	6"	S37E	16Ls				
E $\frac{1}{2}$	Birch	4"	N24W	9 $\frac{1}{2}$ Ls				

58

Notes

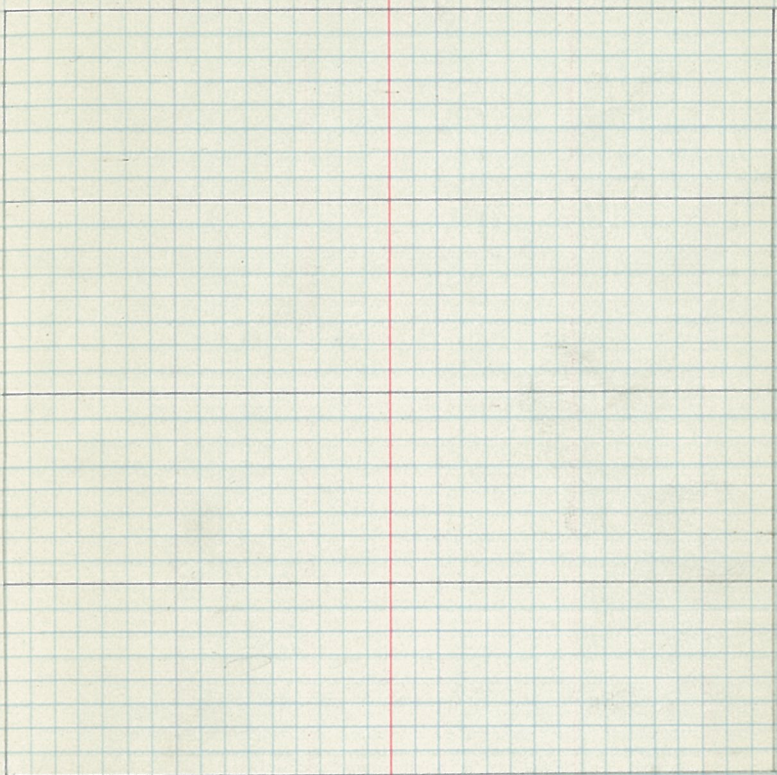
59

type map

Sec. 14 T58 N R27 W 4th P.M.

By

Date



Sec. 23 T58N R27W.

By King

Date.

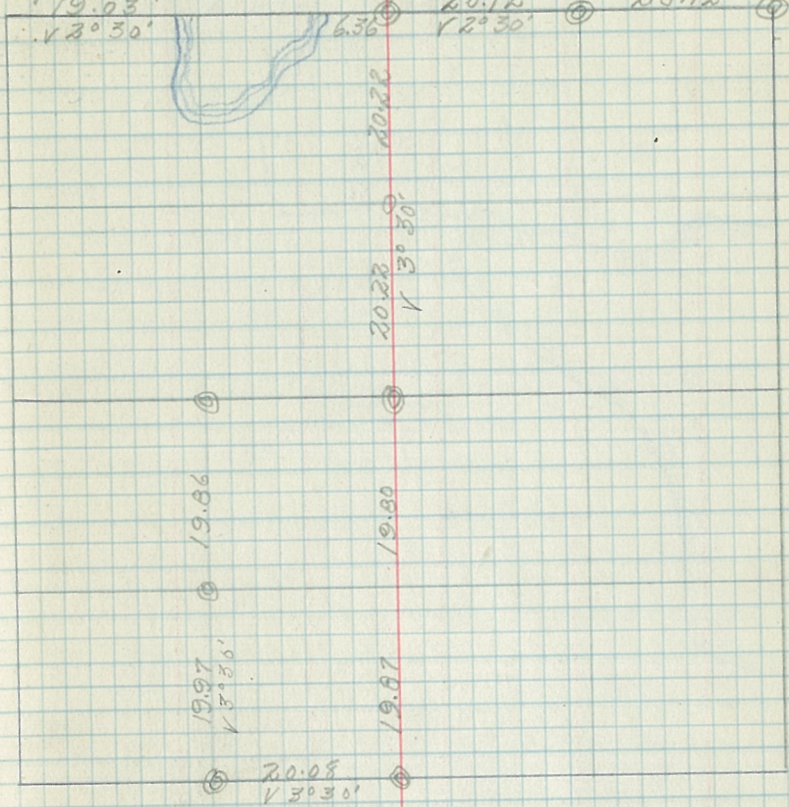
19.03

20.12

20.12

V 2° 30'

V 2° 30'

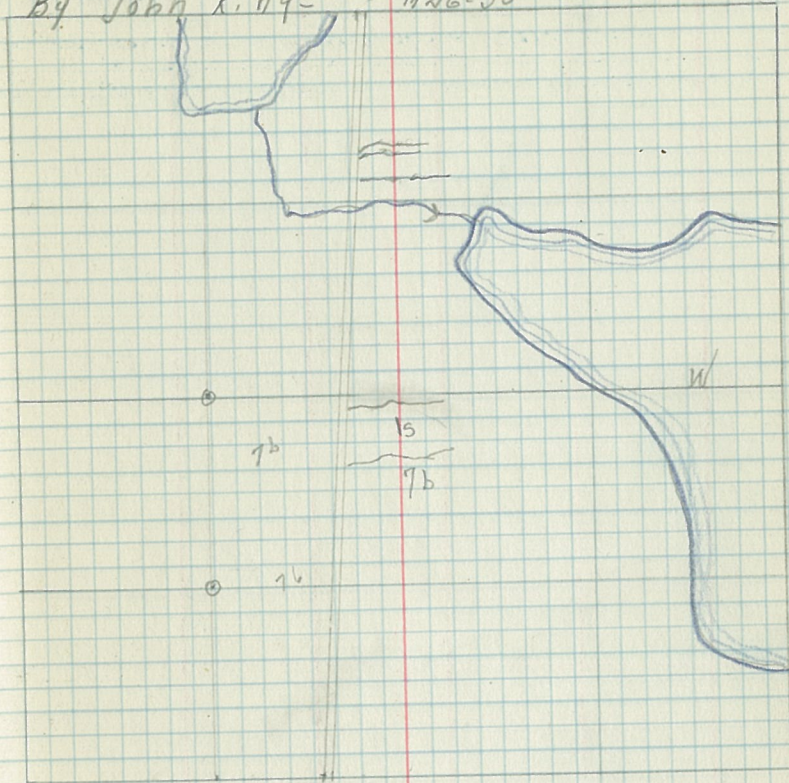


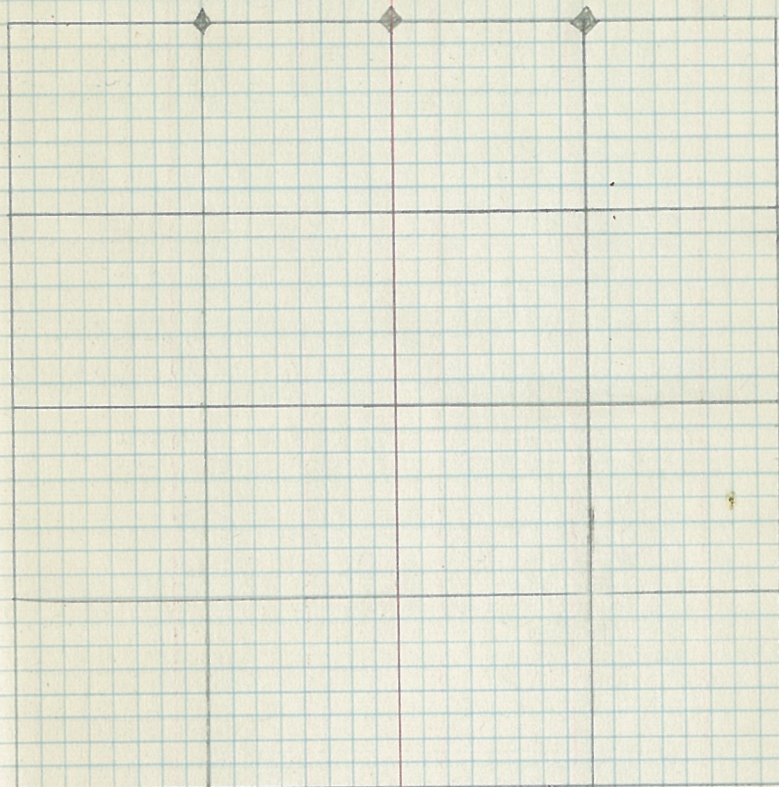
Cor	Bearing Trees		
	Species	D _{th}	Bearing Dist.
NE	Birch	14"	N13°W, 15ch.
N/4	Maple	14"	N42°W, 42ch.

94

95

Type Map.
Sec. 23 T 58 N R 27 W 4th PM
By John King- 1126-35





Cor. Bearing Trees

	Specie	DBH	Bear	Distch.
1/16 # 2	Birch	12"	S 24° E	.14
1/16 # 1	Birch	8"	S 31° E	.16
	Birch	7"	N 24° W	.08
N 1/4 Cor.	Bassia	12"	N 72° E	.50

144

Sec. 36 T58 R 27

145

Cor. Bearing Trees
Spec in DBH Bark Ditch
E 1/4 W.P. 12" S65°E 155

148

Sec. 1 T57N R27W.

starting at NE corner Sec. 1. I run West
with variation 7° (Nideclination) Bearing 583° W
Thru Willow and Aspen open country.

20.57 ch. est. $\frac{1}{16}$ cor. 3" Aspen 40 inches high.
Run W. 60 links to $\frac{1}{4}$ 570

Est. $\frac{1}{4}$ cor. at 41.14 ch. W of S. cor. on Aspen
ridge - No BTs found.

Run W from $\frac{1}{4}$ cor.

6 ch. enter Black Spruce, Tam & Balsam

swamp. heavy going

18 ch. enter Mixed hardwood stand

Est. W $\frac{1}{16}$ at 20.57 ch.

Run W from W $\frac{1}{16}$ cor. 10 ch. enter Cedar &

Bl. Ash swamp Bears N+S

Established Sect. Cor. 20.74 ch. W of $\frac{1}{16}$ cor.

3.5" Tam. 20" high.

Sec. 1 T57N R27W

149

Cor	Bearing	Trees
E $\frac{1}{16}$	583° W	Spice DBH, Bear Dist
		W. Swamp
		W. P. Swamp

150

Sec 2 T57N R27W,

Started from ^{NE} Sec. cor which is 3.5" Tam
40" high I ran S84°W thru B. Sp.
Cedar, Tam + Balsam 19.55 ch. to N+S
fence. Offset to N. 2.1 ch. to cor.
of N+S + E+W fences. Set Approx.
Cor. 3" Bal 40" tall.

2 ch. W. of 1/4 cor. enter Alder + Bal. Swamp
Bears N+S.

8.22 ch. Set stake on E bank Suomi Road.

14. ch Enter Aspen saplings Bears N+S.

19.42 ch. Set Approx 1/4 Cor. 3 B.T's

19.55
8.22
27.77
27.77
27.77

T57N R27W Sec. 2.

Cor. Bearing Trees.

	Specie	Dst	Bear	Dist.
NE	Tam.	5"	S33°E	.46 ch.
	B. Sp.	5"	S35°W	.69 "
	B. Sp.	7"	N40°E	.53 "
	B. Sp.	6"	N32°W	.50 "
N 1/4	Aspen	5"	N0°W	1.27 ch.
	Aspen	12"	N4°E	1.30 ch.
	Aspen	10"	N22°W	1.18 ch.