

LINEAL SURVEY

T58N R26W 4TH PM

T58N R26W 4th P.M.

Query Data

MINING
TRANSIT BOOK

CCC 46

INDEX

Page

Town-58 N. - R. 26 W. 4th P.M.

"

"

"

1 to 4	Section 1
5 to 8	" 2
9 to 12	" 3
13 to 16	" 4
17 " 20	" 5
21 " 24	" 6
25 " 28	" 7
29 " 32	" 8
33 " 36	" 9
37 " 40	" 10
41 " 44	" 11
45 " 48	" 12
49 " 52	" 13
53 " 56	" 14
57 " 60	" 15
61 " 64	" 16
65 " 68	" 17
69 " 72	" 18
73 " 76	" 19
77 " 80	" 20

INDEX Cont.

T. 58N. - R26W. - 4th P.M.

Page.

81 to 84	Section 21	Posted
85 " 88	" 22	
89 " 92	" 23	
93 " 96	" 24	
97 " 100	" 25	
101 " 104	" 26	
105 " 108	" 27	
109 " 112	" 28	Posted
113 " 116	" 29	
117 " 120	" 30	
121 " 124	" 31	
125 " 128	" 32	
129 " 132	" 33	
133 " 136	" 34	
137 " 140	" 35	
141 " 144	" 36	

1.

Section 1

chains West from app. Cor to 6-7(58-25)

1-12(58-26) Var 6'15"

4.00 leave alder swamp

32.25 Enter spruce swamp

44.20 leave same

46.00 Enter same spruce swamp

50.00 leave same.

54.00 Enter same spruce swamp

60.65 leave same

78.48 N45 line 140 links S of Sec.

Cor to 1-2-11-12. set app 1/4 Cor

to 1-12.4" x 36" Spruce post at

39.29 and 70 links N. N1°W points

Feet South between Sec 1 & Sec 2. (By Perry)

Ran S. thru hilly country covered
with second growth birch and
Aspen

4830' Crossed old trail bearing E+W

5280' Set up approx Cor. Sec 1-2-11-12

4" Aspen post 3' high. B.T. 5" N.P. 548°E

Dist. 24', 2" Aspen 541°W, Dist 13' 9"

N. pine stump N55°E Dist 6'6"; 2" Aspen

N 35°W Dist. 12'6". Yellow U.S.F.S. poster

on 4" Aspen on R.H. Est cor. 84' E

of random line. Found 2 stumps
that check with Govt Survey notes.

2.

Ran E Between 51436 - V5°

3. ch. Enter green Talm. Swamp.

10.76 ch. leave " " "

11.29 ch. Intersect Trail " " "

17.76 ch. W. Bank of Lake. Took Angle 81°30' on 80' Base

25.44 ch. leave lake.

44.33 ch. Enter thick alder swamp.

52.14 ch. leave same

58.33 ch. level - A + 36

68.78 ch. Enter N. Pine

80.00 ch. Marked stake for Cor.

80.22 ch. Intersect N19 line 2.98 ch. S of Sec Cor. Est. Sec. Cor. 1-6-31-36

4" N. Pine 26" Marked Approx 51-56-531-536. B.T. - 12" Pine

Snag 25' high N 20° W 19', 6" N. Pine N 20° E, 17', 6" N. Pine

576' E 5', 5" N. Pine S 10° E, 13' Put Poster on NE - B.T.

Found stumps corresponding to old survey and tree with

old blazes at four stakes.

Ran S from Cor. S. 1-6-31-36. on Township line V 7°

0-14.23 ch. N.P. + birch - hilly

14.23 ch. Enter open bog.

16.36 ch. leave same " Enter N.P.

20.00 ch. Marked stake for approx 1/6 Cor.

20.76 ch. leave N. Pine + enter second growth A + B.

31.14 ch. Enter Ash + Alder Swamp.

33.86 ch. leave " " " "

49.55 ch. Enter " " " "

50.9 ch. leave " " " "

66.46 ch. Enter Thick alder swamp.

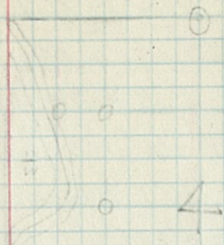
80.00 ch. Marked stake for S. Cor. in Alder swamp. 124' E. to N45

Random line between S. 14 S 12

P.P.O.

3.

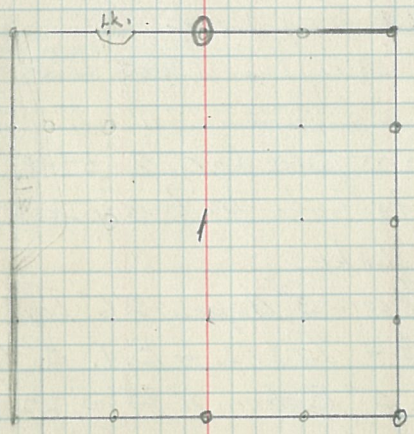
4.



1/4
WB
WB

Area	Tree
1/4	WB
1/4	WB

1/4 WB
1/4 WB



9.

No Declinations Given

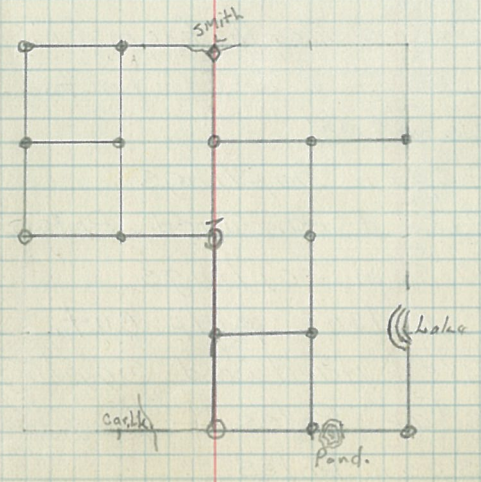
- Section 3, T58N R26W
- Chains Starting Cor 2-3-10-11 west between Sec. 3+10
 14.09 Hit E Bank of small round ^{pond} bearing NW 75W.
 17.12 Leave Pond
 54.03 Hit E. bank of Caribou Lake Est. M.C.
 93.83 Triangulated Lake - Leave same.
 M.C. = 3" Aspen - 2'6" high marked Approx MC Sec 3+3
 Placed U.S.F.S. poster on 5" Aspen N76°E Dist 56'
 58' S. to random line
- 40 Est 1/4 Cor Marked approx 1/4 S10 + 1/4 S3. 4" Birch 3' High
 Placed U.S.F.S. poster on 7" Aspen N20°E Dist 9'. Cor.
 set 44' N. of R4. Divided our chainage - Count down & reset.
 20 N from 1/4 Cor Set 3" W. Birch 2'6" high Marked Approx 1/6 S3. Placed
 U.S.F.S. poster on 5" W Birch N13°E Dist. 136'
 Ran line E 40 ch. from 1/4 cor. 3+4 to C. of S3.
 40 ch N. from 1/4 cor S3+510 intersected E+W. line, Est. Corner
 79.42 N from 1/4 Cor S3+510 hit S Bank of SMITH LAKE
 MC = 4" Spruce marked MC. S34+53 also
 iron pin 6" high, B.T. - 5" Sp. N58°W. Dist 34'
 marked MC S34 B.T. 10" Aspen S11°E Dist 46'
 marked MC S3 B.T. Placed U.S.F.S. poster on NW B.T.
 27.36 West Between S3+34 to MC on W bank
 of lake to Sec. Cor 3+4 - 33+34 which
 is 4" white birch 3' high and 3/4" iron
 pipe. Marked S3-54-533-534.
 B.T. - 7" Aspen S28°E - 45', 4" W Birch, S26°W - 43'
 6" Aspen N47°W - 42', 8" Aspen N32°E - 47'
 Placed U.S.F.S. poster on NE B.T.

10.

Center Corner Sec. 3 = 4" Aspen - 2'6" high Marked Approx 1/4 S3
 Placed U.S.F.S. poster on 5" Aspen N6°E - 16'

- 47.27 N. on Center line S. 3 intersect New R. of W.
 49.24 N. on " " " 3 " " Road Bearing NW + SE
 60.00 N. " " " 3 Est. 1/6 Cor. 4" N. Pine 2'6" High
 Marked Approx. 1/6 Cor. S. 3. Placed U.S.F.S. poster on 7" N.P.
 S61°W - 6'
- 78.88 N. to S. Bank of SMITH LAKE 3,36 Ch. E. of 1st R.L.
 Ran E. from 1/6 Cor. N. of Center Cor. of Sec. 3
 7.65 Enter marsh.
 13.56 leave same
 20.35 Est Approx. 1/6 Cor 4" Aspen 2'6" high Poster on 7" AS 73°W 9'
 40.69 Intersect N+S line between S 2+3
 Est. E 1/6 Cor S. 3 + S10 (Approx) 3" W Birch 2'6" High marked
 approx. 1/6 S3+10. U.S.F.S. poster on 5" W Birch S60°W Dist 7' Then
 Ran N from Est 1/6 Cor. S3+10
 1.66 ch. Enter bog
 6.59 ch. leave bog
 20.00 ch. Est. Approx 1/6 Cor.
 29.85 ch. Enter small bog bearing E+W.
 31.59 ch. leave same
 40.00 ch. Marked approx. 1/6 Cor. E. of center cor.
 59.36 ch. intersect E+W. line
 East from 1/6 Cor. Set Center Cor. S. 3.
 1.74 ch. intersect Right of way
 3.56 ch. leave R. of W.
 21.21 ch. Intersect N+S Random line
 21.10 ch. Est 1/6 Cor. 52' N. of R.L. 4" Aspen 2'6" marked Approx 1/6 S3
 placed U.S.F.S. poster on 4" Aspen N60°E - 12' Then set
 Approx. 1/6 Cor. 20 ch. N. on Center line. 3" Birch 2'6" High
 marked Approx. 1/6 Cor. S3. Poster on 5" W Spruce N6°W 11'.
 To lake
 N 1/6 Cor. Common to S2+53 = 3" Tom. 2'6" High marked 1/6 S3
 Located in bog.
- Ran N. from 1/4 Cor. Sec 3+Sec. 4 1/6 W
 20 ch. Marked stake for Approx 1/6 Cor.
 38.26 ch. Intersect E+W. Sec. line.
 39.32 ch. To cor post S 54-33-34 - 66' west to Sec cor.
 Ran E from 1/4 Cor. S3+4
 18.38 ch. Est 1/6 Cor by dividing Sect. 59' N. of R.L. 3" N.P. 2'6" High - Poster
 on 9" N.P. S 53° E. Dist. 7'. Ran N. from above Est 1/6 Cor.
 7.21 ch. Hit SMITH LAKE ROAD - 46-36 - 8.
 20.00 ch. Marked stake for 1/6 Cor. 4" Aspen 2'6" Poster 84.531°E - 6'6"
 29.32 ch. Enter Swamp.
 32.24 ch. leave Swamp.
 38.13 ch. Intersect E+W. line.
 39.32 ch. Set app. 1/6 Cor. - Approx 1/6 S3+534 - 3" W Birch. 2'6" High -
 Placed poster 4" Aspen N 26°W 2'
 Ran West from Center of NW 1/4 Sec. 3
 17.93 ch. Intersected N+S line between Sec. 3+Sec. 4 - 18' S. of Approx 1/6 Cor
 18.43 ch. Set approx 1/6 Cor. 3" Aspen - 2'6" high marked Approx
 1/6 Sec 3+4. Poster on 8" Balsam N 88°W - 3'

P-0



13.

Section 4 T. 58 N. R. 26 W. 4 P. M.
West from M.C. between Sec. 4 + 9
to Sec. Cor. Common to Sections
4, 5, 8, + 9. - 58-26

Var. 6°00'

Start at M.C. Cedar Post.

0-6.00 Mixed Hardwood.

N. + S. $\frac{1}{16}$ line 25 links east of
6.00 chain stake.

16.00 Merchantable Mixed Hardwoods

18.00 Hardwood Saplings.

22.00 Black Spruce saplings

24.00 Aspen Poles

25.61 Aspen saplings

Section Corner 4 links North
Common to Sec. 4, 5, 8, + 9. - 58-26

Proceed North from this Corner
which is a cedar post.

Var. 6°00'

0-6.00 Aspen Saplings

10.00 Mixed Hardwood Poles

14.00 Balsam Saplings

Balsam pulp cut.

18.00 Mixed Hardwood Saplings

28.00 Cedar Poles - Logging Road

33.48 Aspen Poles

M.C. - 23 Lks W, B.T. W Cedar 10" S 12" W 9 Lks.

14.

West from $\frac{1}{4}$ Cor. 53 + 54. V 7°

3.11 Ch. Intersect SMITH Lk Road

14.11 Ch. Intersect Marcell Road

16.59 Ch. Enter green Cedar, Tam. and Balsam swamps.

28.78 Ch. Hit E. Bank of N. Star Lk. Took angle to W. bank
of lake with 80° Base line + L of 84°30'

33.30 Ch. To W. Bank of Lk.

49.77 Ch. To Marsh

52.05 Ch. Leave Marsh

13.07 Ch. To E. Shore N. Star Lk. 87' N. of Merriset's line - level - Ab + 3b.

Est. $\frac{1}{16}$ cor E. of center cor Sec. 4 - 8" Aspen 2 1/2" high post on 4"

Aspen, N 72° E Dist. 14'. Corner Est in Spruce Cedar Swamp

Ran N from above $\frac{1}{16}$ corner.

20.00 Ch. Marked stake in spruce and cedar swamp.

Ran W. from N. Star Lk. Common to Sec. 3 + Sec. 4

18.48 Ch. Intersect Marcell Road.

20.05 Ch. Intersect N + S line 14' S of App. $\frac{1}{16}$ Cor. - 4" cedar, 2 1/2" high
U.S.F.S. Post on 8" W cedar S 2° W 7'

29.45 Ch. To E. Shore N. STAR Lk.

Meander Corner Between Sec. 4-58-26
and Sec. 33-59-26

Ran South, Dec. 7°

Chainage

0-2

2-6

6-8

8-16

16-18

18-22

22-26

26-30

30-34

34-37

37-40

40-41.29

Type

3b

Ab, 3b

3b

Ab

3b

Ab + Bd.

3b + 2b

Ab

Mixed Hardw.

Bd + 4

B.C. to

 $\frac{1}{4}$ line37.44 N. of $\frac{1}{4}$ corner.

15.

Section Corner 4-5-8-9
7.58 R.26

Cedar part rotted out of ground.
B.T. - Barwood (6") N. 26 W. 30 links.
Run North - Decl. 6°

Damage	Type
0-6	Ab
6-10	Mc
10-14	Bb
14-18	Mb
18-28	4c (logging road)
28-33.48	Ac

M.C. 23 links W.

B.T. - N. Cedar (10") S. 12° W. 9 links

B.T.'s for Sec. Cor.

S. 70° W of paster

Barwood	8"	N. 40° W.	85 links
W. Birch	8"	N. 2° E	23 "
Balsam	6"	S. 46° E	45 "
Cedar	6"	S. 4° W	39 "
"	10"	S. 40° W.	1.25 chs.

Paster on 5" Barwood

Sect. 4,

16.

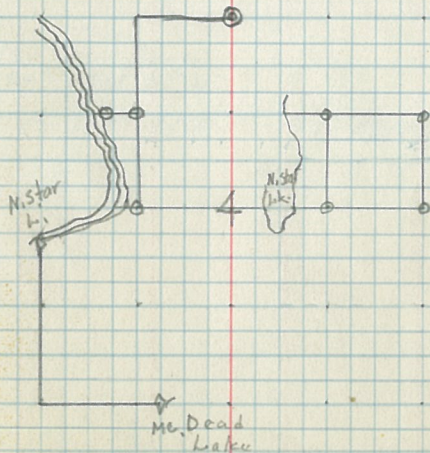
Meander Corner

Cor.	Bearing	Trees	Dist.
NW 1/4			
	WBirch	8"	N. 2° E .70 ch.
	" Birch	5"	S 29° E .24 ch.
Sec. Cor.	Barwd.	8"	N. 40° W .85 "
	Birch	8"	N. 2° E .23 "
	Bal.	6"	S. 46° E .45 "
	Cedar	6"	S. 4° W .39 "
	Cedar	10"	S. 40° W 1.25 "

Started at 32 ch
N. of Sec. Cor. 4-5-8-9 S.E.
58-26. Run East,
Decl. 6°
At 9.47 chs R.R. Grade
Then N. 6° E 4 chs.
" E. 90 links
" N. 1 ch.
" E. 40 links
" N. 3 chs.

Placed M.C.

Put 1/2 cor. on E. & W. 1/4 line 40.16 ch. S. of
M.C. on Sec. Line (Sec. 4-58-26 and Sec. 32-
59-26). Cedar Stake 36" High. Paster
on Balsam (8") S. 30° E, 8 links. Run
W. on Decl. 6° 0-8-8 chs thru Ac
& Ab found appr. M.C. 66 links N.



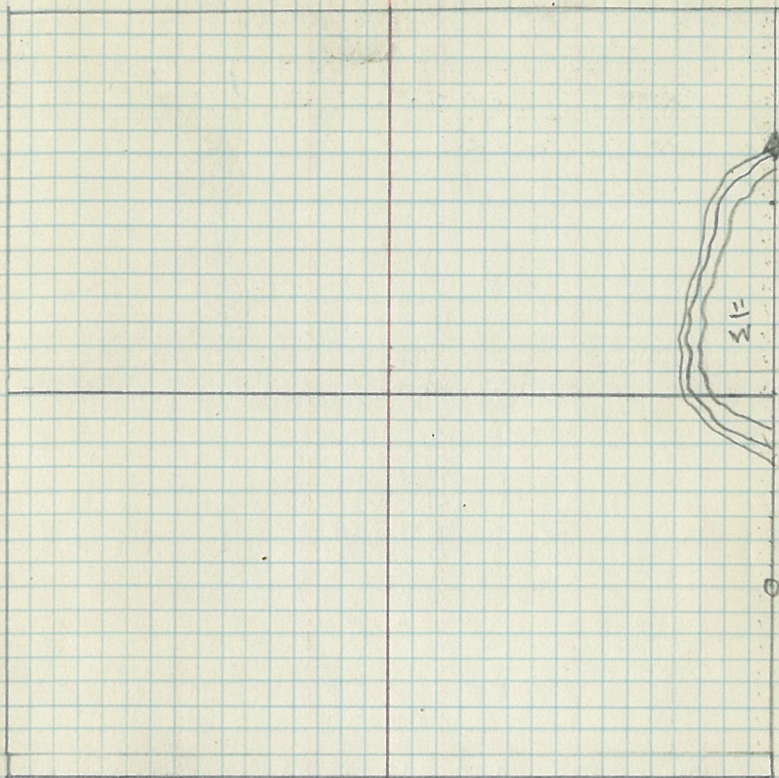
17.

Meander Corner
 Started at Sec. Cor. 4-5-32-33
 Ran S. Declin 6°
 9-15.11 Ab type. M.G. 5
 links E.

Porter on Birch 6", N. 5° E, 1.05
 db. B.T. White pine stump,
 24", N. 5° E., 45 links.

Sec 5.

18



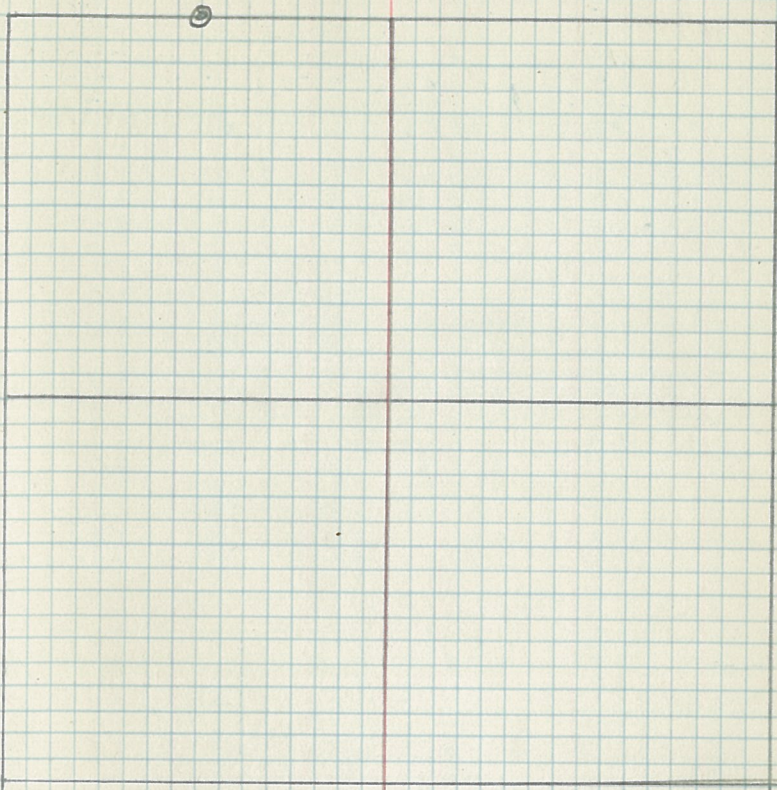
Cor	Beaving	Tree	
Spec.	DBH	Dist	Bear.
N-Mic	WP	24"	.45ch N5°W
NE-M.G.	Birch	6"	1.05 N.5°E.

F. S. Porter

21.

Sec. 6

22.



Cor	Bearing	Traces
1/16 #2	Spec	DBH
	Aspen	10" NW 224
	Aspen	10" S 10° E .444

29.

Sec 8 T. 38 N. R. 26 W. 4th P.M.

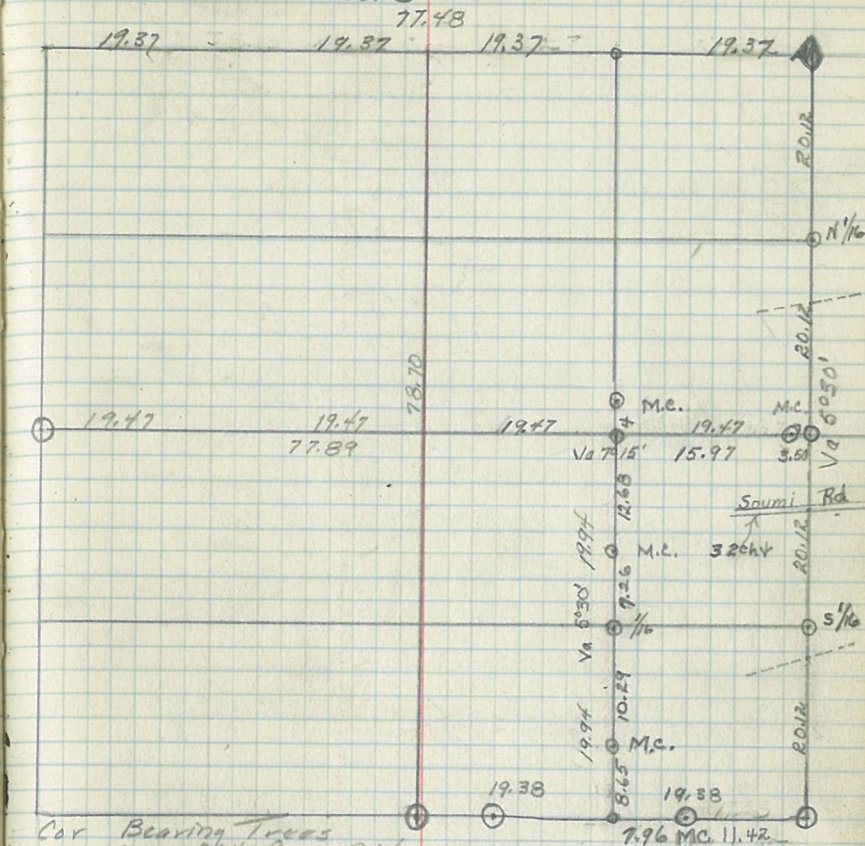
Began Sec. cor 8, 9, 16 & 17

Gains ran N on $5^{\circ}30'$ Va

16.50	Cross logging road
20.125	Set $5\frac{1}{16}^{\text{th}}$ bct. S. 8 & 9
32.00	Cross Soumi Rd
40.25	Set $\frac{1}{4}^{\text{cor}}$ bct. S. 8 & 9
53.50	Cross logging rd.
60.375	Set $N\frac{1}{16}^{\text{th}}$ bct. S. 8 & 9
80.50	Sec. cor 6, 5, 8 & 9

30.

Sec. 8



Cor	Bearing	Trees	Spec	Dist.
NE	5°	$N2^{\circ}E$		25ch
			8"	$N10^{\circ}W$ 85ch
		Balsam	6"	$S40^{\circ}E$ 45ch
		Cedar	6"	$S4^{\circ}E$ 30ch
		Cedar	10"	$S40^{\circ}W$ 125ch

33.

Section 9 T58N R26W 4th 1/2

North from sec. Cor 9-10-15-16

Var 6° 15"

22.92 ch intersect hwy #38.

31.73 ch intersect hwy #38.

4000 ch Marked Stake.

59.60 ch intersect per. to M.C. on

Caribou Lake. M.C. is 191 chs.

E. of our line. M.C. is a

4" x 36" N. Pine post. and is a

resurvey corner. Found old

Govt. B.T. 14" w pine stump

569' w distance 24 links placed

U.S.F.S. post on 8" N. Pine

S. 55° W distance 47 links.

Rerun line N from sec. Cor

9-10-15-16 Var 4° 30"

24.54 chs intersect Hwy #38.

59.62 ch to M.C. 26 links W of stake

second growth Birch & Maple

Soil poor Hilly & Rocky

Hazel under brush

Establish 1/4 Cor to sec. 9-10

at 40.26 chs. and 13 links East

3" x 36" w. Birch post. placed

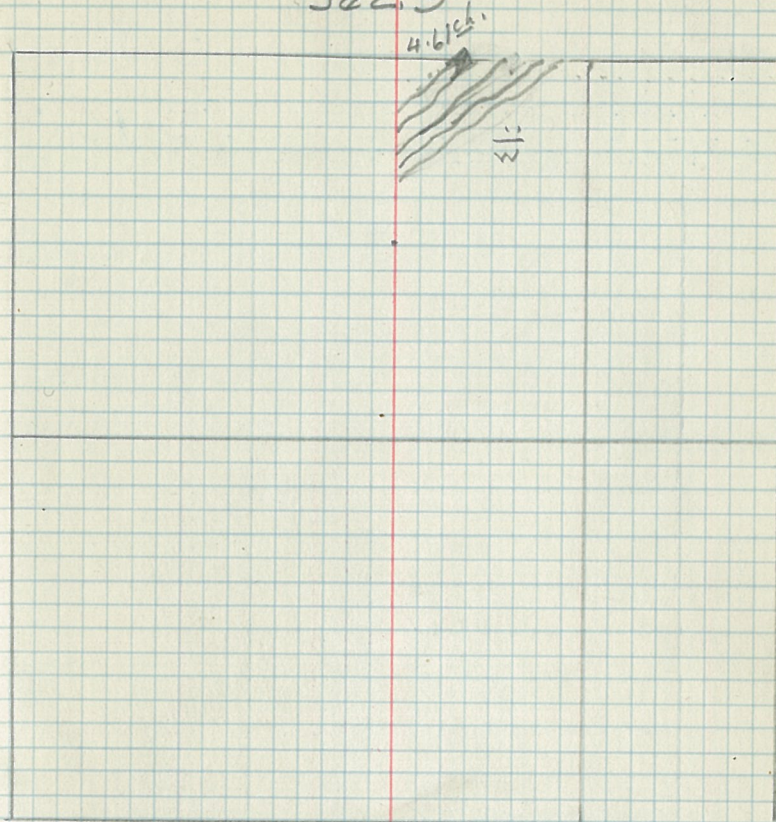
U.S.F.S. post on 6" w Birch

N 81° W distance 31 links.

P.P.

Sec. 9

34.



Cor Bearing Traces
 Spec. DBH, Bear. Dist.
 Cedar 20" S 87° W 130 ch.

37.

Section 10 58-26

North from 1/4 Cor. to Sec 10-15

variation $5^{\circ}30''$

16.95 chs. Enter spruce swamp.

19.89 chs Leave same.

34.44 chs enter alder swamp

35.90 chs Leave alder swamp

44.26 chs to old logging road

79.70 chs. Intersect E-W line at 4.88 chs

East of app. Corner is also 671115

N of E-W line. Second growth

Aspen + Birch, scattered N. Pine

Soil first rate. Land Hilly.

East from 1/4 Cor. to Sec. 9-10.

Var. $6^{\circ}15''$

6.59 ch to W bank of Caribou lake.

24.50 ch to E. bank of Caribou lake.

38.44 ch Intersect N+S line at 38.94 chs.

N. of 1/4 Cor. Sec. 10

47.00 ch Intersect logging road.

63.40 ch Enter Alder + Spruce swamp

69.48 ch Leave alder + spruce swamp

78.18 ch Intersect N+S sec. line. Set

APP. 1/4 Cor. at 2640' N. of Sec. Cor.

Post is 4" x 36" Aspen. Placed

U.S.F.S. poster on 7" Aspen

575' x Distance 10 links.

38.

Set Cor Center of Sec. 10 at 244 ch
 West of 1/4 Cor. 44 links N of line intersection.
 4" x 36" post. placed U.S.F.S. poster on
 8" x 10" pine 5' W distance 10 links. Land
 Hilly. Second growth Aspen, Birch + Balsam.

pro

41.

Section 11 T58N-R26W 4:17 PM.

South from App. Sec. Cor. to

1-2-11-12 between 2+11 var 6° 15"

40.00 ch. Enter spruce & tamarack swamp

Failed to locate 1/4 Cor. etc.

53.85 ch. Leave spruce & tamarack swamp

78.84 ch. Intersect E-W line at 198143. E

of marked stake for Cor. to sec.

11-12-13-14. Set app. Cor. to sec.

11-12-13-14. 3.13 chs. W. of N45 line

& 75 lks. of E & W line. 3" x 36" aspen

post. placed U.S.F.S. poster on

5" aspen. N3° E Distance 68 lks.

Land hilly. Soil sandy second

growth aspen and Birch.

South from 1/4 Cor. to sec. 2+11. Var 9°

21.47 chs. to N. Bank of lake.

30.56 chs. to S. Bank of lake

40.00 ch. Marked Stake. N 1/2 of 1/4 land

Hilly. sandy soil. Second growth
aspen and Birch.

47.93 chs. Enter open bog.

45.00 chs. Leave open bog.

54.00 chs. Enter open bog.

56.50 chs. Leave open bog

79.93 chs. Intersect E-W line at 37.66 chs.

E of sec. Cor. set app. 1/4 Cor. to

42.

11+14. at 39.17 and 32 links S. of line
4" x 36" Birch post. placed U.S.F.S. poster
on 9" W Birch N 86° E Distance 18 links
E from 1/4 Cor. to 10+11 var 6° 15"

16.00 chs. Enter alder swamp.

20.00 chs. Leave alder swamp

36.00 chs. Enter open bog.

37.50 chs. Leave open bog.

39.25 chs. Intersect N-S line at 4.35 chs. of 1/4 Cor.
Reset to 90.12 1/2 + continue E.81.35 chs. Intersect N-S line at 38.54 chs. S. of
Sec. Cor. set app. 1/4 Cor. to 11+12 at 39.74 1/2.

S. of sec. Cor. and 1.52 ch. W. of N45 line

4" x 36" aspen post. placed U.S.F.S. poster
on 16" aspen N 86° E Dist. 98 links.

Set app. 1/4 Cor. sec. 11. at 40.12 1/2 ch. S. of

1/4 Cor. and 45 1/2 links E of N45 line.

4" x 36" W. Birch post. placed U.S.F.S.

poster on 6" N. Pine N. 88° W Dist 41 links

land hilly. Soil sandy. Second growth
aspen, Birch, and scattered N. Pine.

Run E from cor. common to Sec. 10-11, 14, 15. Between 14+15. Var 6° 15"

9.75 ch. Enter cedar swamp bears N45.

13.45 ch. Leave cedar swamp

34.43 ch. Intersect logging rd. 30 lks. S. of line is small h. Bar. N 52°

40.00 ch. Marked Stake for 1/4 Cor.

79.50 ch. Marked Stake for Sec. Cor. 11-12-13-14. No evidence of older.

V

45.

Section 12

N. From Sec. Cor to 12-13 (58-26)

Chains And 7 x 18 (58-25) Between 7 1/2 Var 570

19.40 Leave open swamp

20.31 to 18" N. pine stump marked P.L.

22.50 Enter alder swamp

29.20 Leave alder swamp

40.05 Found 12" W Birch B.T. scribing

Not visible. set 4" x 36" aspen post.

N 35° W from B.T. placed U.S.F.S.

Post on 7" aspen N 22° E 32 links

42.00 Enter nice stand of N. Pine.

52.00 Leave N. Pine type

52.75 Enter tamarack swamp

58.35 Leave tamarack swamp

65.01 Enter spruce + alder swamp

78.09 Intersect E-W line

Reset app. cor to 1-12-67 60 links

W. of our line. placed U.S.F.S.

Post on 4" aspen 512 W Dist 34 links

West. From 1/4 Cor. 758-25/1268-20

3.04 Enter tamarack swamp

9.24 Leave same

31.85 Enter spruce swamp

37.22 Leave same

43.39 Enter tamarack swamp

48.00 Leave same

46.

Chains

78.41 Intersect N+S line

79.90 Intersect per. to 1/4 cor to Sec. 11-12 15 links

North of stake.

South from 1/4 cor to 14/12 Var 5° 30"

1.50 Leave spruce swamp

11.60 Enter alder swamp

14.60 Leave alder swamp

24.70 Enter alder swamp

27.30 Leave alder swamp

38.70 to E-W 1/4 line at 39.62 chs. set app. 1/4 sec 12

at 39.95 x 9 1/2 links 8. 3" x 36" aspen

Post placed 21 S.F.S. post on 7" aspen

N 55° E distance 16 links

42.50 Enter open swamp

49.40 Leave open swamp

52.46 Enter open swamp

52.73 Leave open swamp

60.60 Enter open swamp

66.00 Leave open swamp

68.75 Enter open swamp which borders N

side of Fly lake.

72.31 to N. bank of Fly lake. set app. M.C.

66° W of line 4" x 36" aspen post.

placed 21 S.F.S. post on 5" tamarack

N 9° E distance 256 links.

Set app. M.C. 1/4 to 12+13 at 34.50 at

of sec. cor to 11-12-13-14 and 116 links

south of line. 4" x 36" aspen post.

placed 21 S.F.S. post on 5" W. Birch

N 44° W distance 146 links.

Set M.C. on E. side of Fly lake at 55.60

W of sec. cor to 11-12-13-14 at 1123 links

Set line. placed U.S.F.S. post on

on 4" aspen N 47° distance 92 links.

E. from approx. Sec. cor. 11-12-13-14 Between 12-13 Var. 7°

34.5 ch. To W side Fly lake. Triangulated

54.66 ch. To E side Fly lake.

72.00 ch. Enter large open swamp. Bears No. 2.

78.00 ch. Intersect per. to Sec. cor. 12-13-7 x 18. Cor. post

15. 150 links S. of our line. 4" aspen 3' High

1/2" iron pipe 18" High. No. 13. It evidently is a

resurvey corner. Post on 4" aspen S 41° E

21 lks.

P.S.

49.

Section 13 T58N R26W 4th PM.

E From Sec. Cor. 13-14-23-24

Var 5° 30"

6.00ch Enter 7b swamp.

11.50ch Left 7b swamp.

24.00ch Enter 7b swamp.

28.00ch Left 7b. swamp.

30.00ch Enter 7C swamp

36.00ch Left 7C. swamp.

66.30ch Enter Brush swamp

73.58ch Left BRUSH SWAMP

80.10ch Intersect Township line 581hs S of

Cor Common to 13-24-58-26 and 18-19

758N-R25W.

Set E 1/16 Cor S 14-23 4" Maple Post

placed U.S.F.S. post on 8"

Bass wood S 27° E 12 lks From Cor.

pro

50.

53. Section 14 T. 58 N. R. 26 W 4th P.M.

Ran E. From sec. Cor 14-15-22-23

var 6°45"

11.10ch To west Bank of Lake.

24.00ch Left Lake

33.00ch Enter 76 swamp.

35.15ch Left 76 swamp.

Missed 1/4 Cor 14/23 99 1/2 N. North.

Ran E. From 1/4 Cor 14-23 var 6°.

40.00ch Are North of sec. Cor 13-14-23-24 1070

Dropped back to sec. Cor 14-15-22-23

Ran N. var 5°30". Ran back. Timber

type 3b. Land Rolling

Ran E From approximate 3 1/16 Cor

S. 14-15. var. 6°30"

13.50ch Enter 76 swamp.

16.40ch Leave 76 swamp

40.00ch to approximate #6 1/16 Cor.

Land Rolling Timber mostly

Cedar. South from approximate

1 1/16 Cor #6 var. 7°.

21.01ch to 1/4 Cor S. 14-23. 3 1/16 west of Cor.

Ran N line E From 1/4 14-23

39.55ch to sec. Cor 13-14-23-24 placed

U.S.F.S. post of 12' Cedar S 65° E

2 1/16. From Cor.

pro

54.

57. Section 15 T58N R26W 4:14 PM.

From #1 1/16 Cor. Var. 5° 30"

39.93 ch. Intersect section line between

sec. 15-22 20 links W of W 1/16 Cor. S 15-22

Set W. 1/16 Cor. Common to sec. 15-22

4" Aspen post 30" High. Placed

U.S.F.S. poster on 8" Aspen S 60° W

61 links From Cor.

Set #5 1/16 Cor. sec. 15. 4" Birch

post 30" High. Placed U.S.F.S.

poster on 5" Birch N 61° W 30 links

From Cor.

Set N 1/16 Cor. Common to sec. 15-16

4" Aspen post 30" High. Placed

U.S.F.S. poster on 5" Birch N 56° E 14 1/2

From corner.

Ran E From N 1/16 Cor S 15-16.

Var 7°

400 ch Intersect Truck Trail.

Placed U.S.F.S. poster on 5" Aspen

At 15.15 ch.

20.22 ch Intersect W 1/16 line Missed

20 ch. mark 41 links to the North.

Set #3 1/16 Cor. 4" Aspen post 30" High

Placed U.S.F.S. poster on 5" Aspen

S 53° E 41 links From Corner.

Ran E From Above Cor. var 7°

58.

2.86 ch Enter Open Burn.

1287 ch. Cross Frwy bears N+3.

1941 ch. Intersect N+3 1/4 line

27.75 ch. Leave Burned area.

41.00 ch Enter Ash Swamp.

43.12 ch Leave Ash Swamp.

46.00 ch Enter Alder Swamp

1/4 Cor. to 15-22 is 134 links. N off - w transit

line S 1° 36' W. Birch post. 5 ft. 12" W. Pine

S 65° E distance 93 links at 30 1/2" N. Pine S 17° W

distance 92 links. N. from 1/4 15-22.

Var 1° 15"

9.80 ch Enter spruce & cedar swamp

11.00 ch. Leave same.

22.00 ch To small lake pond.

49.80 ch. Leave pond and continue in small spruce

58.50 ch. Leave spruce.

77.50 ch Intersect logging road.

78.56 ch. Intersect #1 W line. Set app. 1/4 Cor. to

sec. 10-15. 4" x 3 1/2" Aspen post. 52 links

E of N 1/2 line. Placed U.S.F.S. poster on

10" Balsam. N 40° E distance 101 links.

Land hilly. Second growth Balsam,

Maple & Birch. Soil good.

Set app. cor. to sec. 15-16 at 54.74

and 41 links to line. 4" x 3 1/2" Aspen post.

Placed U.S.F.S. poster on 6" Aspen S 60° W

distance 48 links. E from app. 1/4 Cor. to

sec. 15-16 var 9°.

39.95 ch Intersect N 1/2 line at 38.89 ch.

Set app. 1/4 Cor. sec. 15. 4" x 3 1/2" Balsam

post. Placed U.S.F.S. on 8" Balsam

N 12° W distance 19 links. E from 1/4 Cor.

variation 9° 15"

13.91 ch to W. bank of lake

16.33 ch to E. bank of lake.

25.42 ch. Enter spruce swamp

29.57 ch. Leave same.

40.47 ch. N 1/2 Sec line at 42.15 ch. Set app.

1/4 Cor. to 15-16 at 40 N + 49 links W.

4" x 3 1/2" Aspen post. Placed U.S.F.S.

poster on 3" Balsam N 15° E dist. 76

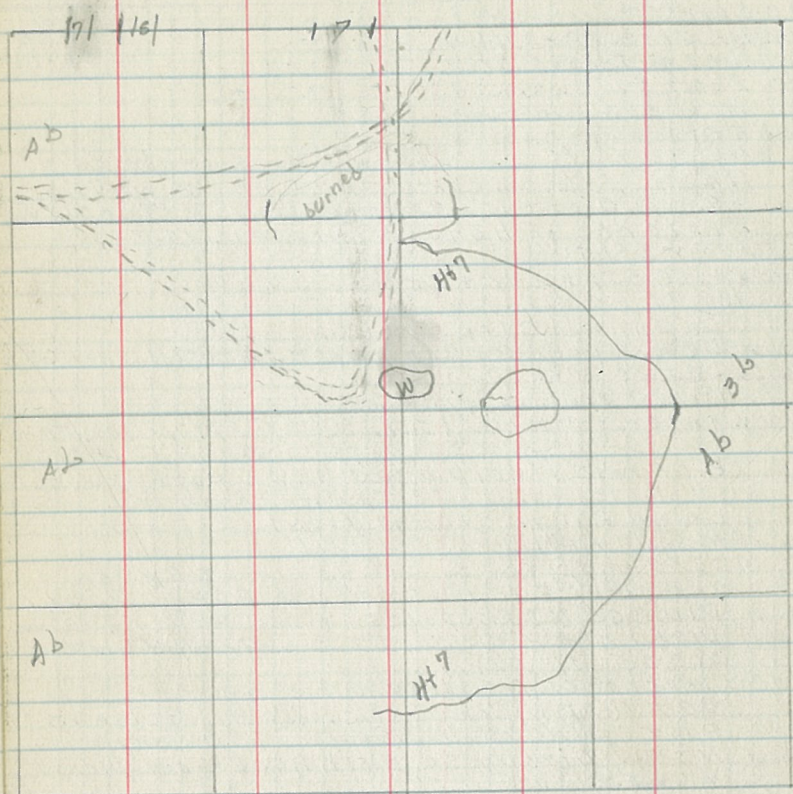
chains. Soil fair. Hilly second

growth Aspen and Birch

pro

59.

Type Map



Sec. 15 T58N R26W 4th PM 60.

By King

Date 12/13/35.

40.49
 Ⓞ V6°15'

40.49
 Ⓞ

19.82
 17°
 Ⓞ

19.82

Ⓞ

39.74

39.28

39.95
 17°
 Ⓞ

40.00

V6°15' 39.74
 19.96
 15°30'

19.96

19.96

39.28

V6° 40.00
 Ⓞ

V7° 40.00
 Ⓞ

39.28
 V6°15'

Ⓞ

81. Section 21-T.58N.-R.26W. 4th P.M.

- From E. 1/16 S. 28-21 - N. Var. 6° 15"
- 11.30 intersect. old trail brs. S.W.
 - 31.25 Enter B. sp. swamp
 - 34.00 Leave swamp
 - 40.00 inter. E-W 1/4 line at 19.62 chs. from ea. 1/4 S. 21-22
 - 48.71 inter. Hwy. # 38
 - 63.42 Enter balsom swamp
 - 64.88 Leave balsom swamp
 - 66.00 inter. Tower road
 - 80.04 inter. E+W. line bet. S. 21-16
Est. E 1/16 S. 21-16 19.98 chs. from ea. 1/4 cor.
Est. 1/16 #8 at 19.78 chs. from ea. cor. + 16 links W. from E. 1/16
Est. W. 1/16 S. 21-16 at 19.98 chs. cor.
 - 14.95 inter. Old Trail brs. E-W.
 - 16.65 Enter grass swamp
 - 20.67 Leave " "
 - 26.00 inter. Grave Lake Fire Trail
 - 40.13 inter. E-W 1/4 line at 59.78 chs. to 1/4 S. 21-22
 - 80.48 inter. E-W. S. line bet. S. 21-28 at 87 links W. of W. 1/16
Est. 1/16 #A 19.77 from ea. cor. + 47 links E of N.-S. line
Est. S. 1/16-S. 21-22 20 chs. from ea. 1/4 cor.
 - 7.24 Enter balsam swamp
 - 8.40 Leave " "

5 from W 1/16 sec. 16-21

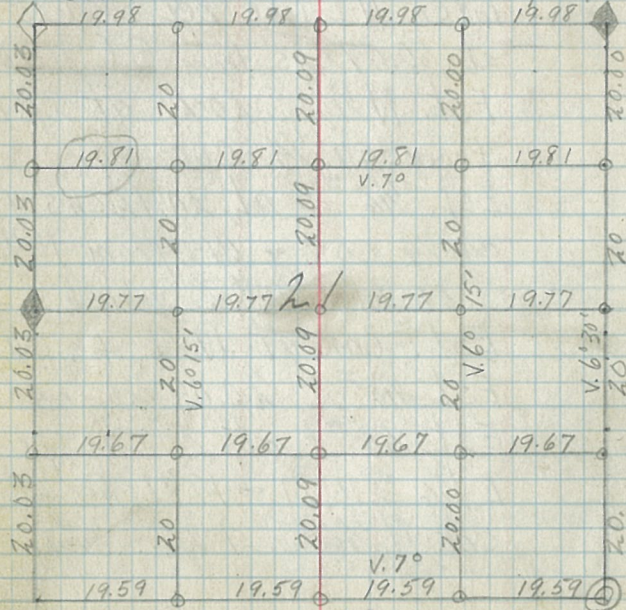
W from S 1/16 sec. 21-22

Section 21 Continued

82

- 19.45 inter. E 1/16 line at 20.12 chs. N. from E 1/16 S. 21-28.
- 22.41 inter. Hwy # 38
- 33.73 Enter B. spruce swamp
- 37.76 Leave " "
- 39.32 inter. N-S 1/4 line at 60.08 chs. from 1/4 S. 21-16
- 59.60 inter. W 1/16 line N.S. at 60.22 chs. N. to W. 1/16-S. 21-16
- 78.67 inter. N-S. S. line bet. S. 21-20-20.26 at
Est. S 1/16 20.03 from ea. 1/4 cor.
Est. N 1/16 20.00 from ea. 1/4 cor.

S. 21-T.58N.-R.26W.-4th P.M.



Section 21 Cont.

83.

w from N $\frac{1}{16}$ Sec. 21-22

16.41 Inter. Hwy #38
 19.53 " N-S E $\frac{1}{16}$ line S. 21 at
 59.92 chs. S. to E. $\frac{1}{16}$ S. 21-28
 37.16 Enter B. Spruce swamp
 39.30 Leave " " " "
 39.60 Inter. N-S $\frac{1}{4}$ line at 20.12 chs from
 $\frac{1}{4}$ S. 16-21
 58.50 Enter grass swamp
 59.77 Inter. W $\frac{1}{16}$ line at 20.07 chs. to W $\frac{1}{16}$
 S. 16-21
 62.52 Leave grass swamp
 68.95 To E. bank of little lake
 dis. across lake is 7.21 chs.
 76.16 Leave lake
 79.23 Inter. N-S line bet. S. 21-20
 at 60.07 chs. from S.C. 21-20-29-28
 Est. N $\frac{1}{16}$ S. 20-21 at 20.05 chs.
 from ea. $\frac{1}{4}$ cor.
 Est. $\frac{1}{16}$ #3 at 20.12 chs from
 ea. $\frac{1}{4}$ cor. + dis. from N $\frac{1}{16}$
 S. 20-21 + $\frac{1}{16}$ #2 which is 39.62
 Est. cor. at 19.81 fr. ea. cor.
 Est. $\frac{1}{16}$ #2 20.09 chs. fr. ea. cor.
 Est. $\frac{1}{16}$ #1 at 20 chs. from
 E $\frac{1}{16}$ S. 16-21 + 19.81 chs. from
 cor. N. $\frac{1}{16}$ S. 21-22. $\frac{1}{16}$ #2

Section 21 Cont.

84.

Est. $\frac{1}{16}$ #7 - 19.67 from E. $\frac{1}{16}$ S. 21-22 +
 20.00 " $\frac{1}{16}$ #8
 Est. $\frac{1}{16}$ #6 at 20.09 chs. from $\frac{1}{4}$ S. 21-28 +
 19.67 chs. " $\frac{1}{16}$ #7 $\frac{1}{16}$ #5
 Est. $\frac{1}{16}$ #5 at 20.12 from W. $\frac{1}{16}$ S. 21-28 +
 19.67 chs. from S. $\frac{1}{16}$ S. 20-21

S. 21 T. 58 N. R. 26 W. - 4th P. 19. sec. lines.
 Sec. cor. 21-22-27-21 - cor. post 5' cedar 3' high
 B.T. 6" balsam N. 32° W. - 31 lbs (placed poster)
 B.T. 7" aspen S. 81° W. - 50 lbs.
 West bet. S. 21-28 V. 7°
 34.00 Intersect Highway #38
 40.00 - Found no evidence of G.L.O. $\frac{1}{4}$ corner.
 80.00 - Found no evidence of G.L.O. sec. corner.
 Est. forest service cor. at 78.37 chs.
 North bet. Sec. 21-20 V. 7°
 40.06 chs. Tied in 90 lbs. to $\frac{1}{4}$ S. 20-21 Found
 Old G.L.O. B.T. - scribing plainly visible least from post.
 80.12 chs. Tied in 81 lbs. E. to S.C. 20-21-16-17
 Probable G.L.O. corner (Found trees that checked
 on $\frac{1}{4}$ S. 20)
 East bet. S. 16-21 V. 7°
 40.00 Found no evidence of G.L.O. $\frac{1}{4}$ corner
 79.72 Tied in 116 lbs. So. of cor. to sec. 15-16-21-22
 cor. is a 4" iron post 3 1/2' high (G.L.O. B.T.)
 B.T. 6" W. birch S. 40° E. - 5 1/2 lbs (poster)
 B.T. 3 1/2" W. pine stump N. 44° E. 14 lbs.
 South bet. S. 21-22 V. 6° 30'
 40.00 Found no evidence of G.L.O. $\frac{1}{4}$ cor.
 80.00 Tied in 16 lbs. E. to S.C. 21-22-27-28
 Est. $\frac{1}{4}$ corner S. 21 & S. 22 at 90 chs. from S.C.
 West from $\frac{1}{4}$ corner V. 7°
 77.08 Intersect N-S line 21 lbs. S. to $\frac{1}{4}$ S. 20-21
 Est. $\frac{1}{4}$ cor. to S. 16-21 at 39.76 from S.C.
 South from $\frac{1}{4}$ cor. S. 16-21 V. 6° 30'
 40.06 Intersect E-W line at 2 1/2 links
 E. to C. of S. 21. Set cor. Sec. 21 by proration
 80.34 chs. Intersect E-W line at 18 links W.
 to $\frac{1}{4}$ S. 21 & 28
 Est. $\frac{1}{4}$ S. 21 & 28 by proration the
 distance between section corners.
 Distance from $\frac{1}{4}$ cor. to S.C. is 39.18 chs.

109. Section 28-T-58N-R26W.

Est. app. E. 1/16 S. 21-28 by
 prorating distance from
 1/4 S. 21-28 and S.C. 21-22-27-28
 which is 39.18 chs. Est. E 1/16
 S. 21-28 at 19.59 chs. from each cor.
 Est. 3" aspen post 36" high.

Placed U.S.F.S. poster on 5" white
 birch N. 73° W. distance 8 links

So. from E. 1/16 S. 21-28 - Var. 6° 5'

9.00 To N. bank of Day Lake.

Took right angle with 3 chs. for base
 Est. rod across lake and read
 compass at S. 3° 15' W.

to rod. \angle is 80° 13'

$\cot g.$ of $\angle 80^{\circ} 13'$ ($90^{\circ} 30'$) = 5.976

5.976 X 3 chs. = 17.92 chs. across lake

26.92 Leave Day Lake

39.10 Inter. Hwy. rd. #38

39.85 Inter. E & W. 1/4 line S. 28

59.10 enter B. Spruce swamp

56.78 Leave swamp

57.85 Inter. Plantation road

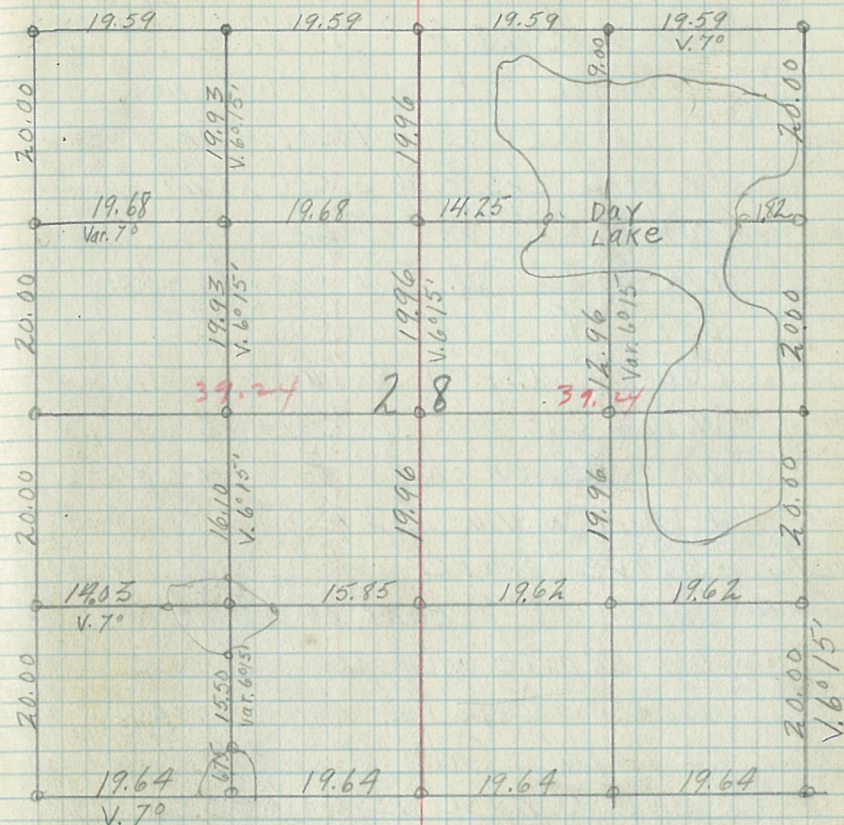
60.00 enter B. spruce swamp on E.

66.64 Leave swamp

79.67 Inter. E+W. S. line bet. S. 28-33.

continued-page III.

S. 28-T58N-R26W-4th P.M. 110.



COR. Bearing Trees COR. Bearing Trees

Spec.	DBH	Bear.	dis	Spec.	DBH	Bear.	dis
2122			165				Links
2857	Balsam	6"	N32°W. 31	2922	Red		
	Aspen	7"	S81°W. 50	3233	Oak	4"	S10°W. 28
2021				2829			
2728	Basswood	8"	N.67°W. 24	3334	W. birch	3"	N.4°E 9

Section 28-T58N-R26W. 4th P.M.

111. continued from page 109.

N-S. line is 6 links W. from E 1/16 post
 4" aspen post 30" high.
 Placed U.S.F.S. poster on 4 1/2" white
 birch S. 28° E. - distance 31 links
 79.76 Est cor on E-W. Mer. line bet. S. 28-33
 W. 1/16 S. 28-33 is located in lake
 From 23 chs. E of S. cor. 28-29-33-32
 ran N. 6° 15' W. 6.75 chs.
 ran S. 83° W. 3.36 chs. to where I
 Est. M.C. W. 1/16 cor. S. 28-33.
 Est. 3" aspen 36" high for M.C.
 W. 1/16 cor. post. Placed U.S.F.S. poster
 on 5" aspen N. 32° E. - 14 links.
 N. From W. 1/16 - S. 28-33 Var. 6° 15'
 6.75 Leave Lake
 15.50 Intersect S. bank of Little Beaver Lake
 Took Rt. angle with 2 chs. for base. Sighted
 across lake to rod which read N. 18° 45' W
 $L = 76° 30'$ - Catg. of $76° 30' = 4.165$
 $4.165 \times \text{base (2 chs)} = 8.33 \text{ chs. dis.}$
 across lake.
 23.85 Leave lake
 26.85 Inter. plantation road
 28.00 Enter swamp on W. side
 33.28 Leave swamp
 79.70 Inter. E-W. S. line bet. S. 28-21 by
 prorating dis. from 1/4 S. 28-21 & S.C.

Section 28 Cont.

112
 Est. W. 1/16 S. 21-28 at 19.59 53.60 - Est. M.C. 1/16 on W.
 from ea. cor. side of lake
 4 links E. from N-S line 3" White Birch 36" h.
 Est. 3" white birch post 39.35 Est. 1/16 #2 S. 28
 36" high. Est. 3" aspen post 36" h.
 Placed U.S.F.S. poster on 19.68 Est. 1/16 #3 S. 28
 white birch S. 58° W. dis. 10 lks. Est. 2 1/2" W.B. post 36" h.
 325 Inter. plantation rd.
 Est. app. N. 1/16 S. 29-28 at 14.18 To W. bank of Little
 20 chs. from S.C. 21-28-20-29 Beaver lake
 Est. 3" aspen post 36" high 23.41 Leave lake
 U.S.F.S. poster on 4" aspen 40.27 Inter. N-S. 1/4 line
 S. 44° E. Dis. 15 links 48.80 Enter B.S.P. swamp
 E. from N. 1/16 S. 28-29 V. 70 52.24 Leave swamp
 16.00 Inter. old trail 54.09 Inter. Old trail brs. N-S
 19.84 Inter. W. 1/16 line S. 28 57.10 Enter B. Sp. swamp
 20.06 S. of W. 1/16 S. 21-28 58.98 Leave swamp
 24.35 enter grass swamp 58.98 Inter. N.S. E. 1/16 line
 28.00 Leave swamp 60.60 Enter B. Sp. Swamp
 34.00 Enter B. spruce swp. 63.63 Leave Swamp
 37.80 Leave swamp 69.93 Inter. Hwy # 38
 39.75 Inter. 1/4 line S. 28 78.47 Inter. N-S. S. line bet.
 & 19.99 1/2 from E. 1/16 S. 21-28
 46.77 Inter. Hwy # 38 Est. S. 1/16 20 chs. N. of S.C. 27-28-33
 53.60 to W. bank Day Lake Est. 1/16 #7 - 19.62 from S. 1/16
 Dis. across lake 18.27 bet. S. 28-27 & 19.94 to E. 1/16 S. 28-33
 71.87 Leave lake Est. 1/16 #6 39.24 chs. from
 78.69 Inter. N-S. line bet. E. 1/16 bet. S. 27-28 & 19.96 chs.
 S. to 1/4 bet 28-33
 Est. N. 1/16 c. 2000 chs. from S.C. 21-22-27-28 1/16 #5 is located in lake so
 1 link S. from N. 1/16 line Est. M.C. 1/16 on E. side, at
 Est. 4" white birch 14.03 chs. W. to S. 1/16 - S. 28-29
 36" high. Est. M.C. 1/16 on S. of lake at
 U.S.F.S. poster on 15.50 chs. S. to W. 1/16 S. 28-33
 white birch 3" Est. M.C. 1/16 on N. of lake at
 S. 37° E. dis. 33 lks. 16.10 chs. from 1/4 #4
 Est. 1/16 #4 at 19.93 free. 1/4 Cor.
 Est. 1/16 #8 at 40.00 chs.
 N. of E. 1/16. which is 12 links
 too far S. which would be on Hwy.
 Est. M.C. 1/16 12.96 chs. S. to
 1/4 #8.
 Est. M.C. 1/16 at 9 chs. N. to
 E. 1/16 - S. 21-28.
 1/16 #1 is located in Day
 Lake.

20-29-21-28 which is 39.18

113 S.C. 20-21-28-29 desc. on page 110
chains So. from S.C. ~~29/28~~^{29/27} bet. S 28-29 V. 6.15'
40.00 Found no evidence of G.L.O. 1/4 cor.
70.80 To No. bank of small lake brs. NW 1/4 SE
73.47 Leave same.
80.00 Found no evidence of G.L.O. sec. cor.
Estb. Forest Service corner.
East bet. S 28-33 V. 7°
14.00 To west bank of lake brs. NW & SW.
21.35 Leave same.
40.00 Found no evidence of G.L.O. 1/4 cor.
78.10 Intersect State Highway #38.
78.59 Tied in 13 lks No. to app. S.C. ~~29/27~~^{29/27}
Estb. F.S. 1/4 cor. to sec. 21-28
at 39.18 chs. to each sec. cor.
So. from 1/4 S 21-28
40.00 Marked stake for app. C. of sec.
79.83 Tied in 70 links west ~~100~~¹⁰⁰ chs. mark.
Estb. F.S. 1/4 cor. at 39.28 chs. from
each sec. corner.
Estb. F.S. 1/4 cor. sec. 27-28 at 40.
chs. to each sec. corner.
West from 1/4 sec. 27-28
2.73 To East bank of Day Lake
13.25 Leave lake
40.66 Intersect N 45. 1/4 line at 10 lks N. to AD Mark
80.81 Tied in 6 lks No. to 40 chs. mark.
Estb. F.S. 1/4 cor. to S 28-29 at 40 chs to S.C. Pity

S. 29 - T 58 N - R 26 W - 4th P.M. 114.

115. Sec. 29.

West from 1/4 Cor. to sec. 29-29

Var. 6°

18.65ch Enter open swamp bks N+S.

25.93ch Leave open swamp

32.00ch To East bank of small pond

12°30" - 6° - 8.77 chains

40.79ch To west bank of pond.

66.92ch Intersect @ grave lake fire way.

placed u.s.f.s. poster on 4" aspen

80.29ch to N+S line, 5 1/4 ch. 9.01 1/4 Cor to sections 29-30.

North from 1/4 Cor. to. sec. 29-35

Variation 6°30"

29.75ch Intersect Grave Lake Fire way

Placed u.s.f.s. poster on 4" aspen

40.31ch Intersect E-W line at 40.67ch

East of 1/4 Cor. to. sec. 28-29

44.62ch to South bank of pond 10°40" = 5.30ch

49.92ch To North bank of pond.

57.12ch to South bank of lake

66.38ch to 2km of land in lake.

5°30" = 10.38ch

67.89ch to lake.

77.81ch to North bank of lake

5°45" = 9.92 chains.

82.15ch to E-W line 9 1/4 ch west of 1/4 Cor.

to sections 20-29

Sec. 29.

Set # 8, 1/16 Cor. 4" x 30" ASPEN

POST AT E. 0.00 CHAINS ON E-W LINE

2. Chains and 1/4 ch. N.

10. South from # 8, 1/16 Var. 5°45"

29. 1.50ch leave open swamp.

29. 18.35ch to Grave Lake fire way.

31. W from # 7, 1/16 Cor. Var. 6°15"

39. 20.10ch to # 6, 1/16 Cor and 8 1/4 ch N. corner

previously set and recorded.

Set # 7, 1/16 Cor. at 20ch south of

8, 1/16 Cor. and 20.10 ch E of # 6, 1/16 Cor.

4" x 30" ASPEN post. placed u.s.f.s.

Poster on 7" N. Pine N 21° E. Distance

10.37 chains

W from app. sec. Cor to 28-29-32-33 var. 7°

4. 18.80 chs. to old logging road.

5. 39.80 chs. to 1/4 Cor. to find 1/4 Cor.

76.80 chs. found line & place 50 chs. N of line

8. 79.40 chs. intersect N+S line

P/P

115. ~~Sec. 29~~

West from 1/4 Cor. to sec. 29-29

Var. 6°

18.65ch Enter open swamp brs N+S.

25.93ch Leave open swamp

32.00ch To East Bank of small pond

12°30" - 6° = 8.77 Chains

40.79ch To west bank of pond.

66.92ch Intersect @ grave lake fire way.

placed U.S.F.S. poster on 4" aspen

80.79ch To N+S line, 5 1/2 links, 90 ft 1/4 Cor. to sections 29-30.

North from 1/4 Cor. to. Sec. 29-35

Variation 6°30"

29.75ch Intersect Grave lake Fire way

placed U.S.F.S. poster on 4" aspen

140.31ch Intersect E-W line at 40.67ch

East of 1/4 Cor. to sec. 28-29

44.62ch to south bank of pond 10°40" = 5.34ch

49.92ch To North bank of pond.

57.12ch to south bank of lake

66.38ch to arm of land in lake.

5°30" = 10.39ch

67.89ch to lake.

77.81ch to North bank of lake

5°45" = 9.92 Chains.

82.13ch to E-W line 93 links west of 1/4 Cor.

to sections 29-29

D.P.C. 27
North from temporary 8 1/2 Cor. Corner
Variation 5°20"

2.75ch leave swamp.

12.00ch To South shore of lake 5°30" + 50" = 6° = 29.03ch

29.03ch to North bank of lake.

29.53ch Enter tamarack swamp brs. E-W

31.63ch Leave swamp.

39.00ch To Edge of Pond Set. M.C. 1/2 Cor. Corner

on line at 39.00 Chains. 4" x 24" aspen

post. placed U.S.F.S. poster on 4" W Birch

51°E Distance 58 links.

Set willie Cor. to sec. 29-29 at 40ch

on line. 4" x 30" Cedar Post. placed

U.S.F.S. poster on 6" Balsam. N 24°E

Distance 24 links 5 ft from willie Cor.

to sec. 29-29. Variation 6°

40.44ch to E-W line at 40ch chains.

57.68ch Intersect Grave lake Fire way

placed U.S.F.S. poster on 5" N Pine

80.73ch to E-W line at 59.90 Chain and 44 links

East of Cor.

Set south willie Cor. at 60.16 Chains South

of section Cor. 4" x 30" Maple post.

placed U.S.F.S. poster on 4" scrub oak

54°W from Corner

East from willie Cor. 29-30 variation 9°

2009chs Intersect N+S line at 59.65 Chains

22.40chs Intersect Grave lake Fire way.

26.90chs Intersect Grave lake Fire way

39.14chs to N+S line at 20.83 Chains N of 1/4 Cor. Sec. 29-32

Set willie Cor. at 20.79 chains on N+S line. 4" x 50"

Aspen post. placed U.S.F.S. poster on 4" N Pine

due North. Distance 24 links

Set willie Cor. at 60.34 Chains 21 links W

of line. 4" x 30" aspen Post. placed U.S.F.S.

poster on 4" N Pine N 7°E Distance 54 links

Set willie Cor. at 20.14ch on N+S line 4" x 24"

aspen post. placed U.S.F.S. on 8" N Pine

N 47°W distance 113 Chains

from willie Cor. Var. 6°45"

20.39ch to N+S line at 19.85chs. 90 ft. willie Cor.

Section 29-29

34.28ch to W bank of lake. Set willie Cor. at 39ch

on W bank of lake 4" x 30" aspen Post.

placed U.S.F.S. poster on 4" Birch 8.70°W

Distance 16 links. Set willie Cor. at

20.18ch on line. 4" x 24" aspen Post.

placed U.S.F.S. poster on 5" N Pine Distance 9 links

Set willie Cor. at 40.32ch on N+S line and

18 links W. 4" x 30" aspen Post. placed U.S.F.S.

poster on 4" aspen 52°E Distance 9 links

ps

117 Section 30 T58N-R26W 4³⁰ PM

West From 1/4 Cor 29-30 Var. 6'±

79.00ch Enter alder swamp. Bears NW/SE

81.00ch Leave alder swamp R.

84.50ch Enter alder swamp. Bears NW/SE

86.00ch Leave alder swamp R.

87.22ch To N+S line 89/1Ks S of 1/4 Cor sec.
25-30. Corner previously set and
recorded.

South From 1/4 Cor 19-30. Var. 6'

3.00ch Leave alder swamp R. S E-W

18.65ch Intersect Gravelake Fireway.

39.25ch Enter alder swamp.

39.50ch Leave alder swamp

40.67ch Intersect E-W 1/4 line at 40.39ch

West of 1/4 Cor. S. 29-30. Set Center

Post at 40.00 Ch. on N+S line and

37/1Ks. E. 4" x 30" Ash Post. Placed

U.S.F.S. post on 7" Maple N 37° W

28/1Ks From Corner

W. From N 1/16 Cor. S. 29-30 Var. 6'

27.39ch Intersect Gravelake fire way

Placed U.S.F.S. post on 34"

yellow Birch

37.15ch Intersect Gravelake Fireway

40.49ch Intersect N+S line at 19.85 Ch.

S of 1/4 Cor. sec. 19-30.

U.S.F.S. 29-30

43.45ch Enter Ash Swamp

49.72 Ch Leave Ash Swamp

82.90ch Intersect Range line 69/1Ks N of

1/16 Cor to 187.30. Corner previously

set and recorded.

Set #11/16 Cor at 40 Ch on E+W line

and 20ch S of 1/4 Corner to sec. 19-30

3" x 30" Ash Post. placed U.S.F.S.

Post on 12" W. Pine stump S 29° W

Distance 90/1Ks.

Set #11/16 Cor to sec. 19-30 at 20 Ch on

line. 4" x 30" Aspen Post. placed

U.S.F.S. Post on 5" Aspen N 64° E

Distance 15/1Ks.

S. From #11/16 Cor 19-30. Var. 6'±

11.21ch Intersect Gravelake Fireway.

19.68ch Intersect E-W line at 19.58 Ch. W of 1/16

variation at this point change to 6°

40.15ch Intersect E-W line at 19.42 Ch on

W of 1/4 Cor. to 29-30. at this point

variation changes to 5'±

80.88 Ch to E 1/16 Cor section 30-31 10/1Ks E.

Corner previously set and recorded

West From 5/16 Cor to sec 29-30

variation 6°

19.75 Ch Intersect N+S line at 59.52 Ch. S.

of #11/16 Corner to sec 19-30

Set #7/16 Cor at 60.09 Ch. on N+S

line and 25/1Ks W. 4" x 30" Aspen post

Not near available for post

Set #8/16 Cor at 20 Ch. W of 1/4 Cor

and 21 links South. 3" x 30" Birch post.

Placed U.S.F.S. post on 5" Birch.

N 82° W Distance 36/1Ks.

Set #11/16 Corner at 20 Ch on

E+W line and 41 links South.

4" x 30" Aspen post. placed U.S.F.S.

Post on 10" Aspen S 30° W 10 Ch on

West From opp. Cor 29-30-31-32 Var. 7'

59.14 Chs. to old logging road.

87.36 Chs. Post to Sec. Cor to 30-31 10/1Ks S 29° W

line is 79/1Ks N of Cor. 3" x 30" W. Pine

Post. 1" x 14" Iron Pipe. placed U.S.F.S. Post on

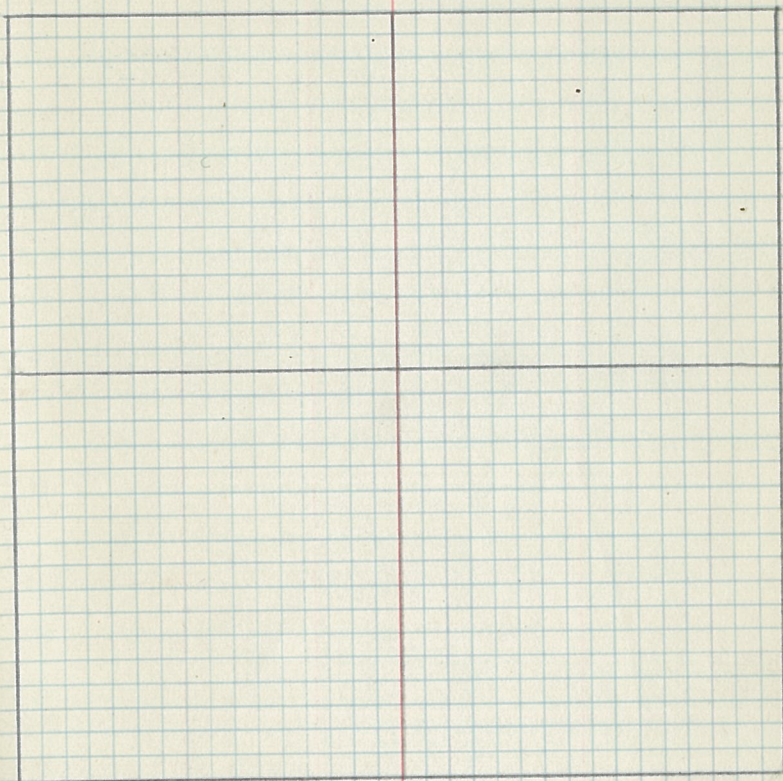
14" N. Pine stump B.T. S. 49° E. Dist. 7/14.

PTD

123.

Sec. 31

124.



129 Sec. 33-T.58N-R.26W-4th PM

So. from S.C. ^{29/29}/_{32/33} bet. Sec. 32-33 V. 63

40.00 Estb. F.S. 1/4 cor. S. 32-33. Found two stumps that checked with G.L. picks. Placed U.S.F.S. poster on a 3" W. birch N. 62° E dis. 9 links.

80.00 Tied in 318 chs. West to S.C. 32-33-T.58N-R.26W. (Ran by J. Milne corner located later) Corner is a County resurvey

E. bet. S. 33 & S. 28 T. 58 N R. 26 W 4th PM V. 7° From F.S. Cor.

14.00 to west bank of lake brs NW & SW offset 2.64 chs. & ran parallel to random line 7.35 chs.

21.35 leave lake

28.15 enter small circular bog

30.79 leave " " " "

32.80 Intersect road brs NE & SW

40.00 Marked stake

78.10 Intersect Marcell Hwy.

78.59 Intersect N & S line 13 lks N. of App. cor to ^{28/27}/_{33/34} Set a 4" aspen post 2'6" high. Placed U.S.F.S. Poster on 3" W Birch N 40° E 9 lks

So. from 1/4 cor S 28 & 33 V. 5°

26.00 to N. bank of lake brs NW & SE triangulation 2 ch. base L 83°

41.50 to so. bank of lake

S. 33-T. 58 N-R. 26 W-4th P.M. 130

1964 1964 1964 1964

1982 1982 1982 1982

1989 1989 1999 1999

1988 1988 1988 1988

1939 1939 2009 2009

corner data

cor. Bearing Trees

Spec. V.B.H. Bear. 015

32/33 W. birch 5" N. 36° W. 34 ch

5/4 W. birch 5" S. 18° E. 30 ch

M.G. N.P. 8" N. 15° W. 25 ch

28/27
33/34

131

- 76.70 Enter spruce & tamarac Swamp bis^{E & W}
- 78.90 Leave " " "
- 79.92 Intersect E & W line 26 lks E of 1/4 corner to 54-57-26 & 33-58-26
West from App 1/4 cor 5.32 & 33 V. 70
- 30.60 to west shore of lake. Offset 2.33 chs & run parallel to original line
- 40.56 Intersect N & S line center 1/4 in Lake
- 51.21 Return to original line
- 79.51 Intersect N & S sec line bet 5.33 & 34
- 79.78 Intersect 31 links N of App 1/4 " "
- Rerun E Boundary V 40 Inter Sec line 14 links W of $\frac{32}{5} \frac{33}{4}$
- West 1/6 5 28-33 is in lake from 21.35 chs W to sec cor $\frac{29}{32} \frac{33}{4}$
- 50.250 chs V. 4° 30' then W
- 1.70 chs to MC. Est MC 1/6 post 3" aspen 36" high. placed USFS poster on a 3" W birch 5.50° E 19 lks
- 36.15 Intersect old trail bis NE & SW
- 40.07 Intersect 1/4 line at 21.51 chs to 1/4 c.
- 80.09 Intersect sec line between 33-4 at 20.17 chs W. to $\frac{32}{5} \frac{33}{4}$ Est W 1/6 5. 4-33 at 19.39 chs from each cor. & 78 lks W of W 1/6 line
Est W 1/6 3" aspen 36" high. placed USFS poster on a 4" aspen N 53° W 20 lks.

132

Est 1/6 #4 by prorating distance from 1/6 #5 and 1/6 #3 which is 40.04 chs and 1/4 c. 5.32 & 33 and c of sec. which is 39.89 chs. Est 1/6 #4 at 20.02 chs from 1/6 #5 and 1/6 #3 and 19.49 chs from 1/4 cor 5.32-33. Est 57 lks West of W 1/6 line. Est 4" W birch 36" high. placed USFS poster on a 6" aspen N 92° W 22 lks

5. from E 1/6 5 28-33 V. 4° 45'

13.60 to little lake

17.10 Leave " "

39.75 Intersect E & W 1/4 line

79.31 Intersect sec line bet Sections 4-33 at 19.05 chs to 1/4 c. which is 38.78 chs
Est E 1/6 cor 19.39 chs from each cor. and 44 lks E from E 1/6 line
Est 3" aspen 36" high. placed USFS poster on a 5" aspen N 18° E 38 lks.
Est 1/6 #8 by prorating dist. from 1/4 5.33-34 & c of sect. which is 39.89 chs & 1/6 #7 & 1/6 #1 which is 39.66 chs. Est 1/6 #8 19.95 from 1/4 cor 5.33-34 & 19.83 chs from 1/6 #7 & 45 lks from E 1/6 line. Est 3" W birch 36" high. placed USFS poster on a 3" W birch 5.42° W 20 lks
pro