

DEPARTMENT OF THE INTERIOR
BUREAU OF LAND MANAGEMENT
MINING
TRANSIT BOOK
No. 102

ccc 44

Lineal Survey Notes

Marcell District

Chippewa National Forest

Marcell, Minnesota.

78
13

The paper stock of this book is made of a high grade 50% rag paper having a water resisting surface and is sewed with Bing Special Enamel Waterproof Thread.

Made in U. S. A.

EUGENE DIETZGEN CO.
DRAWING MATERIALS, MATHEMATICAL AND SURVEYING INSTRUMENTS
New York San Francisco New Orleans Pittsburg Toronto

from Center of Roadway for Cross-Sectioning
16 feet wide
Side Slopes 1 on 1.
or Single Embankment.

1	2	3	4	5	6	7	8	9	10	11	12	13	14	15	16	17	18	19	20	21	22	23	24	25	26	27	28	29	30	31	32	33	34	35	36	37	38	39	40	
8.5	9.5	10.5	11.5	12.5	13.5	14.5	15.5	16.5	17.5	18.5	19.5	20.5	21.5	22.5	23.5	24.5	25.5	26.5	27.5	28.5	29.5	30.5	31.5	32.5	33.5	34.5	35.5	36.5	37.5	38.5	39.5	40.5	41.5	42.5	43.5	44.5	45.5	46.5	47.5	48.5

U. S. DEPARTMENT OF AGRICULTURE
FOREST SERVICE
WASHINGTON
OFFICIAL BUSINESS

FORM 574-2B
PENALTY FOR PRIVATE USE TO AVOID
PAYMENT OF POSTAGE, \$300

THE FORESTER
U. S. DEPARTMENT OF AGRICULTURE
WASHINGTON, D. C.

This book is Government property. The finder is requested to deliver it to any officer of the Forest Service, or to mail it without postage by turning and fastening the cover back so that this leaf is exposed.

8-9483

to be
of r
exa

30.6 = 32.6. For slopes of 1 on 1 1/2 see inside of back cover.
Copyright, 1914, by Eugene Dietzgen Co.

INDEX

Notes - Line bet. Sec. 5 & 8, T. 58 N., R. 25 W.
Map - Sec. 5, T. 58 N., R. 25 W.

Page

4
5
6
7
8
9

Sec. line bet. Sec. 1 & 2, T. 58 N., R. 25 W.
Map - Sec. 1, T. 58 N., R. 25 W.

T 57 N R 26 W

Sec 4 pg. 31

T 57 N R 26 W

Sec 5 pg. 35

E 1/4 T 57 N & 58 N R 27 W

Secs. 1-36 pg. 41

7/23/37 Foreman: S.W. Paterson
 Crew: Karkash, Mundy, Stanley
 Equipment: K&E Compass #34680, Tripod, 2-chain tape.
 Scribing on BT's at MC#1: S3MP25W S/MC
 " " BT's at MC#2: BT#2: "BT"
 BT#1: "NP25W S/"

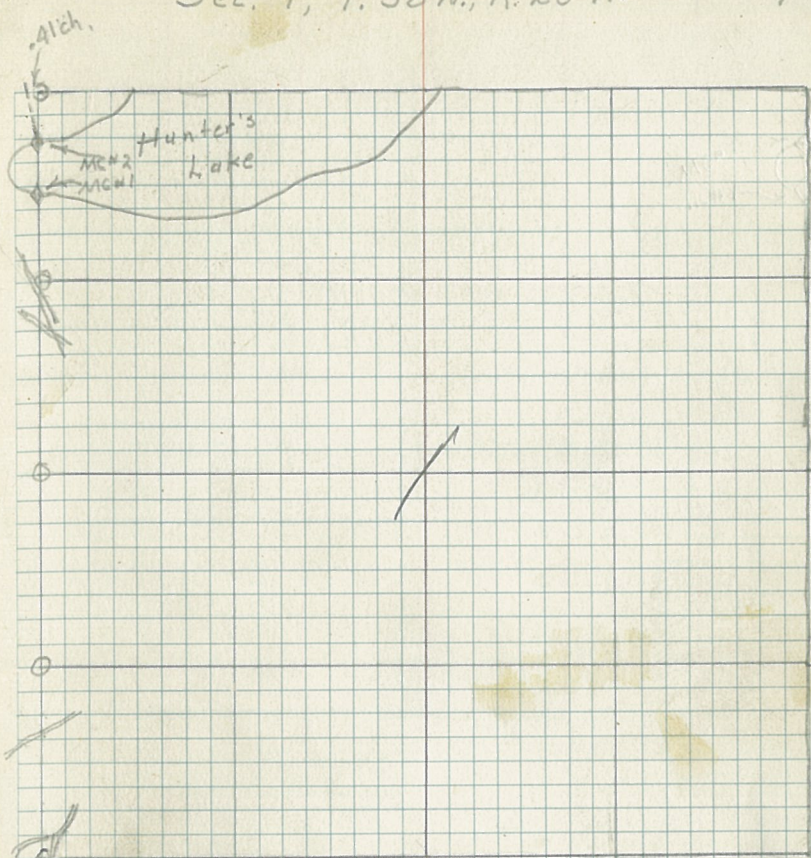
7/24/37 Ran N from MC#2, Crew: Karkash, Stanley, Kubacki
 6.60 ch. Set, temp Sec. Cor. Bear. N2°W
 Found S. Cor. set by Mike Bathrie, Corner is 3"
 spruce blazed 4 sides. S83°E 41 K.

Raid. S. from MC#1 Bear S2°E
 at 20.05 ch from SC $\frac{3926}{21}$ Set temp 1/6 Cor.
 Poster is on Aspen 6" S60°W 10 K.
 21.92 ch - ♀ cleared ROW TT580 Bears S20°E
 24.69 ch - ♀ present TT580
 40.10 ch - Temp 1/4 Cor S182. 4x4 Aspen post
 Location Poster on 4" Birch 14 K N85°E

7/27/37 Continued S. Same crew, same equipment
 60.15 ch - Temp 5/6 Cor. 4x4 Aspen post
 Poster on 4" Aspen 29 K N33°E
 67.05 ♀ cleared ROW for 580 - Bears S58°W
 77.75 ♀ present TT580 - Bears S78°W
 80.10 Set Temp SC. 4x4 B. of 6. Post
 Poster on 11" NP 53 K S41°E
 P'd not find 6th Corner
 Ran due E from our temp. SC. at Va. 6° E
 0.22 ch - ♀ old road Bears S16°W

Sec. 1, T. 58 N., R. 25 W.

9



BT Data				Poster Data			
Cor.	Species	Dia	Bear. Dist	Cor.	Species	Dia	Bear. Dist
MC#1	Tam.	6"	S1°E 10 K	MC#1	Tam.	4"	N31°E 39 K
MC#2	Tam (#1)	7"	N38°E 23 K	MC#2	Balsam	5"	N9°W 52 K
"	(#2)	7"	N25°W 9 K	SC $\frac{3926}{21}$	Spruce	4"	N45°W 41 K.

T 57 N R 26 W

J.W. [unclear] [unclear]

Crew: Karakash, Stanley, Kubacki

K&E Compass #39680

- 7/28/37 Rond. E from approx. N 1/6 Sec. 4 & 5 Va 7°45'
 16.80 - Hit lake. Set temp MC.
 15.66 - Offset N. 4 ch. to miss lake. ^{Set coat}
 24.00 - E. side lake. Set temp MC
 41.26 - Intersect 1/4 line at 20.345 ch N of Cor. 1/4 Cor.

- 7/29/37 Chained S from yesterday's starting point
 19.63 ch - 1/4 Cor. S. 4 & 5. Iron stake in ground. Poster is on spruce 3" 5 1/2" W. 60 ch.
 → Chained E, starting at point. 665 ch N of Cor.
 14.735 Stake marked "6 ch E to 1/6 #4
 Counted stakes in swamp & went around.
 Began at stake marked 6 ch E to 1/4 Cor.
 and continued chaining E along line.

36.555 & T 570

40.46 Intersect ^{rand.} 1/2 1/4 line at point 39.78 ch S of
 1/4 Cor. S. 4-33.

^{Peg at CH}
 (Marked) 40.32 ch N to 1/4 Cor 4-33

→ Chained N from CH Cor. along line.

20.345 intersection our 1/6 line & 1/4 line

40.32 Intersect Sec. line. 43 ch E of 1/4 Cor 4-33

Corner is iron stake in place

→ Rechecked chainage W from approx. N 1/6 Sec 4

(intersection of rand. 1/4 line & rand. 1/6 line)

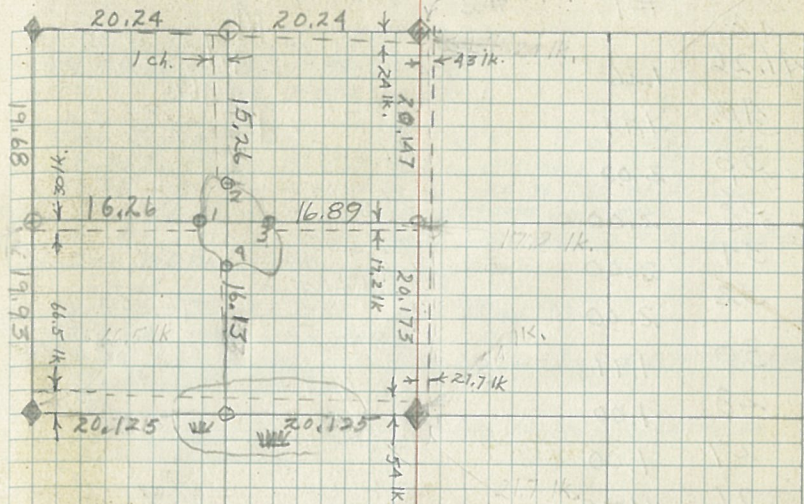
16.89 ch - Temp MC, E. shore lake

25.20 ch - Turn on W bank lake

40.795 Approx. N 1/6 Sec. 4 & 5 (cont. P 33)

Sec 4, T 57 N R 26 W

31



BT Data				Poster Data			
Cor.	Species	Dia	Bear.	Dist	Cor.	Species	Dia
Co. 4-33	Birch	4"	N 29° W	35 k.	C 1/4	Balsam	10"
	W. Pine	10"	S 55° 30' E	24 k.	1/6 4/33	Birch	4"
	Birch	4"	S 7° E	31 k.		N.P. Swamp	36"
					4-5-33	Birch	4"
					W 1/6 4-33	Birch	5"
	N. Pine	14"	N 58° 30' W	23 k.			
	MC #1	5"	S 57° W	50 k.			
	MC #3	7"	S 71° E	24 k.			
	MC #2	3"	N 80° E	29 k.			
	W 1/6 54	3"	Due S	1/2 k.			
	1/4 4-5	3"	S 11° W	60 k.			
	MC #4	7"	S 36° W	26 k.			
	N 1/6 54	6"	S 61° E	48 k.			

State Marks	Rechecked Measure	Recheck #2	Correct Marking	on Measurement
11.21				173
10				173
41.26	1.26		39.855	173
40	1.99		38.595	16.465
38	2.00		36.605	590.00
36	2.00		34.605	180.00
34	2.00		32.605	160.00
32	2.00		30.605	20.00
30	1.99		28.605	19.853
28	1.00		26.615	20.625
27	1.00		25.615	20.025
26	1.675		24.615	19.87
24	2.005		22.94	19.87
22	1.35		20.935	19.87
19.66	1.99		19.585	19.87
17.66	2.00		17.595	19.87
15.66	1.67		15.595	19.87
14	1.995		13.925	19.87
12	2.00		11.93	19.87
10	1.99		9.93	19.87
8	2.00		7.94	19.87
6	2.00		5.94	19.87
4	.54		3.94	19.87
3.46	1.41		3.40	19.87
2	2.01		1.99	19.87
0			0	19.87

T 57 N R 26 W

33

Chained N from NW 1/4 5485
 19.98 ch - S.C. 32-33-1-5
 Cor. is a iron stake in place

Ran E from S.C. Va. 7°45'E Bear. 589°45'E
 19.455 Temp. 1/6 Cor. set by CCC crew.

40.48 Intersect true 1/4 line 124 ch. S. of 1/4 Cor.

Chained W from C 1/4 Cor. across 3rd swamp
 40.46 Intersect N-S line 1665 ch N of 1/4 Cor 4-5.
 Set W 1/6 Cor. 34.

Ran N from W 1/6 34.
 16.13 ch - strike lake. Set Temp. MC.
 24.705 ch - leave lake. Set Temp. MC.
 39.965 - Intersect True E-W section line 1 ch. W of 1/6 Cor.
 Corrected. MC's.

All above 1/4 and Section Corners located by
 County Resurvey

8/17/37

S Peterson

T Gurley
#112

S. Cor. $\frac{31 \cdot 32}{6 \cdot 5}$ $\frac{58 \cdot 26}{57 \cdot 26}$ BT's Va 7°45'E

W-E line bears N89°45'W

Cor is Bal. Post

BT's

4x4x30"

Bal. 10" S87°45'E 15.5'

Cedar 8" S7°30'W 28'

Cedar 12" N64°30'W 34'

Poster is on Balsam 5" N41°45'W 4'

BT Bal. 9" S41°30'E 1.5'

Sec. 5 T57N R26W

35

E 1/4 S. 1-36 T 57 & 58 N R 27 W

Corner is iron pipe $\frac{3}{4}$ " X 18" iron pipe
set 3 ft. underground.

Reference points:

Iron pipes, $\frac{3}{4}$ " X 18" set in ground.

As follows:

S 80° 15' E 34.8 ft.

N 80° 15' W 63.4 ft.

S 90° 35' E 64.5 ft.

N 90° 35' W 101.2 ft.

Guard stake with poster by each R.P.

BT'S:

W.P. Stamp 30"

W.P. Stamp 36"

Marked: E 1/4 S 1 T 57 R 27 BT

" : E 1/4 S 36 T 58 R 27 BT

T 57N R25W

Corner	Bt Species	Dia.	Bearing	Dist.
1/4 14-15	Poplar	6"	S 10° E	53.80'
	"	4"	S 70° E	53.60'
	+ Rock	10"x12"	S 73° W	6.75'
NE 1/6 S. 15 (county #1)	Birch	6"	S 70° E	32.20'
	"	5"	S 55° W	44.60'
EC 1/6 S. 15 (county #8)	Poplar	6"	S 80° E	70.20'
SE 1/6 S. 15 (county #7)	Poplar	10"	S 67° E	52.10'
	"	8"	N 37° W	44.10'
EC 1/6 S. 15 (county #8)	Birch	7"	S 15° W	26.00'
1/4 10-15	Balsam	8"	S 43° E	43.05'
	Poplar	8"	N 36° E	51.05'
W 1/6 S 10-15	Spruce	7"	N 18° E	56.5'
	Poplar	6"	N 55° W	48.2'
1/4 10-11	Poplar	12"	N 85° W	39.6'
	W. Pine	8"	S 82° E	45.6'
2-3-10-11	Poplar	10"	S 70° W	38.0'
	"	13"	N 47° W	72.7'
	"	10"	N 53° E	72.5'
	Pine stump	15"	S 77° E	32.5'
	3 6LO BT'S			

T 57N-R25W

Corner	Species	BT's	Dist.	Bear.
18-19-13, 24	Poplar	7"	88.0'	N67°E
	"	9"	97.0'	N45°W
	N. Pine	5"	70.4'	S30°30'W
	Poplar	10"	114.7'	S66°E
1/4 S 19-30	W. Pine	5"	123.3'	S58°W
	Pine Stamp	12"	73.2'	N80°W
12-13-7-18	Balsam	7"	18.8'	N65°W
	"	9"	30.0'	S17°E
	"	7"	39.9'	N26°E
	"	7"	30.0'	S2°W
1/4 S7-18	Poplar	6"	129.2'	S50°30'W
	N. Pine	6"	183.4'	S80°30'W
1/4 18-19	N. Pine	16"	181.8'	S3°W
	Spruce	5"	124.5'	S32°E
MC west side Trout Lake - Sec. 32	Birch	6"	61.2'	S62°W
	"	6"	71.2'	S87°W
10-11-14-15	Poplar	5"	52.6'	S47°E
	Birch	5"	38.9'	S45°W
	Poplar	6"	47.4'	N51°W
	Birch	5"	44.0'	N48°E
E 1/6 15-22	Cedar	12"	40.75'	N28°E
	"	10"	74.75'	N25°W
E 1/6 10-15	Poplar	7"	39.10'	S53°E
	"	10"	61.80'	N20°E

T 58N-R25W

17
16 315W

Corner	Species	BT's	Dist.	Bear.
1/4 S. 22-27	Pine Stamp	12"	73.0'	N15°30'E
	"	15"	76.8'	N37°E
27-28-33-34	GLD Birch	12"	6.6'	S67°E
	Balsam	7"	25.4'	N49°E
	Birch	6"	14.2'	N30°W
26-27-34-35	All GLD			
1/4 S. 26-27	Balsam	6"	35.7'	S31°30'E
	Cedar	4"	33.4'	N9°30'E
23-24-25-26	GLD Pine		11.8'	N52°E
	Poplar	3"	22.7'	N61°E
	GLD Pine		27.7'	S35°E
	P. Pine		11.0'	West
25-26-35-36	Balsam	6"	17.0'	N2°E
	Poplar	6"	45.8'	S63°W
	Poplar	2"	13.4'	S17°E
1/4 S. 25-26	Poplar	4"	34.4'	S-W
	"	4"	58.1'	N-E
1/4 25-30	Pine Stamp	30"	44.4'	S61°E
	Poplar	7"	83.1'	N38°E
21-22-27-28	Spruce	3"	32.8'	S17°30'W
	"	3"	42.5'	N11°30'W
	Pine Stamp	8"	66.3'	N49°30'E
	Spruce	3"	36.2'	S50°30'E
15-16-21-22	N. Pine	6"	119.4'	S73°E
1/4 S. 21-22	Pine Stamp	15"	70.0'	S5°W
	Birch	3"	6.6'	S32°W
	Poplar	3"	26.7'	S44°E
S 1/6 - 21-22	Ash	8"	158.2'	S81°30'E
	W. Pine	20"	128.0'	S67°W
20-21-28-29	Post			No Trees
16-17-20-21	Pine Stamp	36"	39.6'	N10°30'E
	"	24"	50.0'	S11°W
	Poplar	5"		N49°W
	Poplar	5"	8.3'	N49°W
	"	5"	19.2'	S83°W
S 1/6, 20-21	Poplar	5"	53.8'	S4°W
	"	5"	51.7'	N22°W
1/4 S 20-21	Pine Stamp	30"	19.6'	S79°E
	"	18"	51.7'	S89°W
Center 1/4 S. 27	"	12"	37.2'	S12°30'E
	"	9"	48.2'	S53°W
	"	30"	84.0'	N58°W
57-26 } 7-8-17-18	D. Birch	12"	5.7'	S36°E
	Pine Stamp	30"	133.0'	N51°E
	Balsam	10"	132.5'	West
1/4 7-8	Ash	4"	45.8'	N60°E

		T 58N R25W			
		BT'S			
Corner		Species	Diameter	Bear.	Dist. (feet)
S 1/6 7-8		Pine Stump	40"	S 60° E	95.7
		" "	12"	N 75° W	39.0
SW 1/6 (County #5) Sec. 8		" "	30"	S 23° W	40.1
		" "	30"	N 11° E	78.0
MC 5.8-17 (w. side Bluewater)		D. Cedar	8"	S 30° E	21.2
		N. Pine	12"	N 25° E	108.4
MC 5.8-8 (So. end Trout lake on Property (Vinc) line Sec. 8)		+ Rock	6"	S 25° W	8.0
MC Lake on 1/4 line Sec. 8		Cedar Stump	9"	N 14° W	14.0
		" "	9"	N 80° E	24.8
MC west side Little Trout lake on 1/4 line Sec. 8		" "	12"	N 20° W	18.5
	MC west side Wabuna lake on acc. line 8-9 about 5ch S of S 1/6 Sec. 8-9	Pine "	30"	N 30° W	23.9'
14-15-22-23		6LO W. Pine		S 87° W	115.5'
1/4 15-22		Iron pipe - no trees			
1/4 22-27		+ Rock	30"	S 52° W	97.9'
		+ Rock	24"	N 35° W	37.6'
		Pine stump	11"	N 66° E	27.8'
1/4 27-34 (57-25) (58-25)		Poplar	9"	S 75° W	35.0'
	2-3-10-11 (57-25) (58-25)	+ Rock	60"	S 67° E	85.0'
2-3-34-35		Birch	18"	S 40° W	67.4'
		Balsam	8"	N 51° W	33.0'
	"	8"	N 59° E	42.2'	
		Birch	16"	S 78° E	54.2'
		Poplar			
		Maple			
		6LO BT'S			

		T 58N R25W			
		BT'S			
Corner		Species	Dia	Bearing	Dist
17-18-19-20		6LO N. Pine	14"	N 58° E	141.2'
		" "	12"	N 71° E	132.0'
		N. Pine	7"	N 58° E	118.0'
MC 5.18-19 East shore		6LO N. Pine	12"	S 60° E	145.2'
		N. Pine	4"	N 10° W	43.2'
MC 5.19-24 North Shore		6LO N. Pine	15"	N 18° E	20.5'
MC 5.7-18 West shore Ruby l.		Birch	7"	N 25° W	13.6'
		Twin Birch	7"	S 58° W	9.3'
		6LO N. Pine	12"	N 32° W	17.2'
		" "	14"	S 42° W	11.9'
MC 17-18 South Shore Ruby		" " "	12"	S 20° E	23.1'
1/4 17-18		N. Pine	16"	N 58° W	33.2'
		6LO Pine	12"	S 52° W	9.9'
S 1/6 17-18		W. Pine	7"	N 20° E	20.6'
		" "	7"	N 30° W	43.2'
		" "	5"	N 63° W	39.3'
MC 7-18 W. shore Spider		+ Rock	24"	N 10° W	34.7'
7-18-12-13		+ Rock	28"	N 75° E	41.0'
MC 1/4 line 1470' E of N 713-18		+ Rock	28"	N 22° W	20.5'
		+ "	20"	S 58° W	18.0'
MC 1/4 line, E. Shore Spider 518		+ "	20"	S 78° E	4.0'
		W. Pine	5"	N 62° E	23.8'
S 1/6 13-18 6LO Line Trees		Balsam	7"	S 81° E	39.5'
		W. Pine stump	28"	N 6° E	38.6'
MC. 865.3' E of NW 1/6 W. shore Spiders (County #3)		N. Pine	8"	S 87° W	83.6'
MC. 685.1' W of NE 1/6 E. Shore Spider (County #1)		Poplar	7"	S 21° E	17.0'
		"	11"	S 85° E	14.6'
MC 328' E of SW 1/6 (County #3)		"	7"	S 21° E	21.4'
518 SE. shore Spider		+ Rock	27"	N 83° E	3.5'
E 1/6 7-18		N. Pine	10"	N 57° W	65.6'
MC 310' W of SW 1/6 (County #3)		+ Rock	24"	N 8° E	19.8'
		West shore Spider	30"	S 16° E	8.3'
MC 18-19 W. Shore Spider		Birch	4"	N 67° W	15.0'
MC N 1/2 line W. shore Ruby		Poplar	6"	S 20° W	13.5'
		"	7"	N 33° W	12.7'
E 1/6 18-19		"	7"	N 62° E	25.7'
NE 1/6 (County #1)		"	7"	N 56° W	18.2'
NE 1/6 (County #1)		Pine Stub	36"	N 78° E	19.7'
NW 1/6 S 18 (County #3)		N. Pine	5"	N 34° E	79.3'
W 1/6 S 18 (County #3)		"	5"	S 64° E	53.8'
WC 1/6 S 18 (County #4)		+ Rock	20"	East	76.6'
		+ "	20"	N 30° E	14.4'
SE 1/6 S 18 (County #7)		N. Pine	9"	S 37° E	11.9'
EC 1/6 S 18 (County #8)		"	9"	N 11° 30' W	21.4'
		Spruce	4"	N 28° E	67.2'
	"	"	4"	N 40° W	68.6'

T 57 N R 26 W

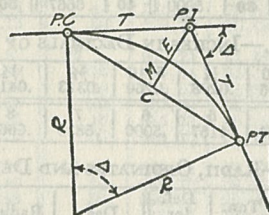
Corner	BT Species	Dia.	Bearing	Dist.
10, 11, 14, 15	W. Pine	15"	N 36° W	107.3'
	" " Stump	30"	S 31° E	22.2'
	B. Wood	10"	S 4° W	85.6'
MC 10-15 (west shore pond)	6LO W. Pine	12"	N 83° E	16.5'
	" Balsam	5"	S 53° E	13.2'
MC 10-15 (East shore pt.)	Maple	12"	S 38° W	32.0'
	Birch	6"	N 57° W	11.9'
MC 10-15 (E Shore Area)	N. Pine	16"	N 12° W	29.5'
	N. Pine	14"	S 28° E	26.4'
	2 6LO stumps			
1/4 15-16	N. Pine	16"	S 33° W	43.6'
	R. Oak	12"	S 36° E	36.2'
11, 12, 13, 14	Birch	6"	N 45° W	26.2'
	I-wood	7"	S 43° E	19.7'
	Maple	7"	N 86° E	28.6'
	Birch	1"	N 45° E	19.3'
1/4 10-11	Pine Stump	24"	N 42° W	35.8'
	" "	30"	N 16° E	18.2'
S 1/2 10-11	Tam.	7"	N 29° E	33.7'
	N. Pine	9"	S 58° E	17.6'
MC 11-14 (west side Hill)	W. Pine	14"	N 53° W	33.0'
	6LO Pine stump		S 56° W	7.3'
MC 11-14 (east Hill L.)	Birch	6"	S 13° E	29.9'
W 1/2 11-14	W. Pine	7"	S 10° E	33.0'
MC 11-14 (W. Bank pond)	N. Pine	14"	N 53° W	29.6'
	" "	14"	S 82° W	21.9'
MC 11-14 (E Bank Pond)	" "	10"	S 75° E	25.6'
E 1/2 11-14	Poplar	7"	N 11° E	48.0'
	"	5"	S 50° W	8.0'

$A =$ GLO measurement bet. known corners
 $a =$ GLO " for side of single forty
 $B =$ Actual total measurement
 $c =$ corrected distance along side of forty.

$$\frac{(A-B)a}{A} + a = c$$

DIETZGEN'S RAILROAD CURVE AND REDUCTION TABLES

Copyright, 1914, by Eugene Dietzgen Co., New York City



CURVE FORMULAS

- Radius $= R = \frac{50}{\sin \frac{D}{2}}$ (1) Degree of Curve $= D$ and $\sin \frac{D}{2} = \frac{50}{R}$ (2)
 Tangent $= T = R \tan \frac{\Delta}{2}$ (3) Length of Curve $= L = 100 \frac{\Delta}{D}$ (4)
 Middle ordinate $= M = R(1 - \cos \frac{\Delta}{2}) = R \text{vers} \frac{\Delta}{2}$ (5)
 External $= E = T \tan \frac{\Delta}{4} = R \div \cos \frac{\Delta}{2} - R$ (6) $= R \text{exsec} \frac{\Delta}{2}$ (9)
 Long Chord $= C = 2 R \sin \frac{\Delta}{2}$ (10) $\Delta =$ Central Angle

EXPLANATION AND USE OF TABLES

Stations.—Given P. I. = Sta. 161 + 60.35 to find Sta. of P. C. and P. T. $\Delta = 62^\circ 10'$ $D = 8^\circ 20'$. From Table IV for 1° curve $T = 3454.1$ and $+8\frac{1}{3} = 414.49$ ft. From Table V correction = .36 or $T = 414.85$ ft. P. C. = Sta. P. I. $- T = 157 + 45.50$. Also from (4) $L = 746.00$ and P. T. = Sta. P. C. $+ L = 164 + 91.50$.

Offsets.—Tangent offsets vary (approximately) directly with D and with square of the distance. Thus tangent offset for Sta. 158 on above curve is 2.16 ft. found as follows. From Table III tangent offset for 100 ft. = 7.27 ft. Distance = 158 — Sta. P. C. = 54.50, hence offset = $7.27 (54.50 \div 100)^2 = 2.16$ ft. Also square of any distance divided by twice the radius equals (approximately) the distance from tangent to curve. Thus $(54.50)^2 \div (2 \times 688.26) = 2.16$ ft.

Deflections.—Deflection angle = $\frac{1}{2} D$ for 100 ft., $\frac{1}{4} D$ for 50 ft., etc. For c ft. = (in minutes) $.3 \times C \times D^\circ$ or = defl. for 1 ft. from Table III $\times C$. For Sta. 158 of above curve = $.3 \times 54.5 \times 8\frac{1}{3} = 136.2'$ or $2^\circ 16.2'$, or = $2.50 \times 54.5 = 136.2'$ from Table III. For Sta. 159 deflection angle = $2^\circ 16.2' + 8^\circ 20' \div 2 = 6^\circ 26.2'$, etc.

Externals.—May be found in similar manner to tangents. Thus E for curve above is 91.37. For from Table IV for 1° curve $E = 960.6$ for $8^\circ 20' = 960.6 \div 8\frac{1}{3} = 91.27$ and from Table V correction = .10 or $E = 91.37$ ft. Or suppose $\Delta = 32^\circ$ and E is measured and found to be 42 ft. What is D ? From Table IV $E = 230.9$ and $\div 42 = 5.5$ or $D = 5^\circ 30'$.

Angle.	Time.	Cost.	Time.	Cost.
74	2839	1406	7115	99027
10	2836	1405	7115	99027
20	2805	1435	6968	98986
30	2773	1495	6827	98944
40	2742	1554	6681	98902
50	2711	1584	6537	98860
60	2679	1584	6317	98769
70	2648	1554	6137	98723
80	2617	1524	6197	98723
90	2586	1524	6197	98723
100	2555	1495	6197	98723
110	2524	1465	6197	98723
120	2493	1435	6197	98723
130	2462	1405	6197	98723
140	2432	1375	6197	98723
150	2401	1345	6197	98723
160	2370	1315	6197	98723
170	2339	1285	6197	98723
180	2309	1255	6197	98723
190	2278	1225	6197	98723
200	2247	1195	6197	98723
210	2217	1165	6197	98723
220	2186	1135	6197	98723
230	2156	1105	6197	98723
240	2126	1075	6197	98723
250	2095	1045	6197	98723
260	2065	1015	6197	98723
270	2035	985	6197	98723
280	2004	955	6197	98723
290	1974	925	6197	98723
300	1944	895	6197	98723
310	1914	865	6197	98723
320	1883	835	6197	98723
330	1853	805	6197	98723
340	1823	775	6197	98723
350	1793	745	6197	98723
360	1763	715	6197	98723
10	1733	685	6197	98723
20	1703	655	6197	98723
30	1673	625	6197	98723
40	1644	595	6197	98723
50	1614	565	6197	98723
60	1584	535	6197	98723
70	1554	505	6197	98723
80	1524	475	6197	98723
90	1495	445	6197	98723
100	1465	415	6197	98723
110	1435	385	6197	98723
120	1405	355	6197	98723
130	1375	325	6197	98723
140	1345	295	6197	98723
150	1315	265	6197	98723
160	1285	235	6197	98723
170	1255	205	6197	98723
180	1225	175	6197	98723
190	1195	145	6197	98723
200	1165	115	6197	98723
210	1135	85	6197	98723
220	1105	55	6197	98723
230	1075	25	6197	98723
240	1045	0	6197	98723
250	1015	0	6197	98723
260	985	0	6197	98723
270	955	0	6197	98723
280	925	0	6197	98723
290	895	0	6197	98723
300	865	0	6197	98723
310	835	0	6197	98723
320	805	0	6197	98723
330	775	0	6197	98723
340	745	0	6197	98723
350	715	0	6197	98723
360	685	0	6197	98723

CAL FUNCTIONS.

Form 974.

Q. 58 N

OP. 26 W

4 H

Mer.

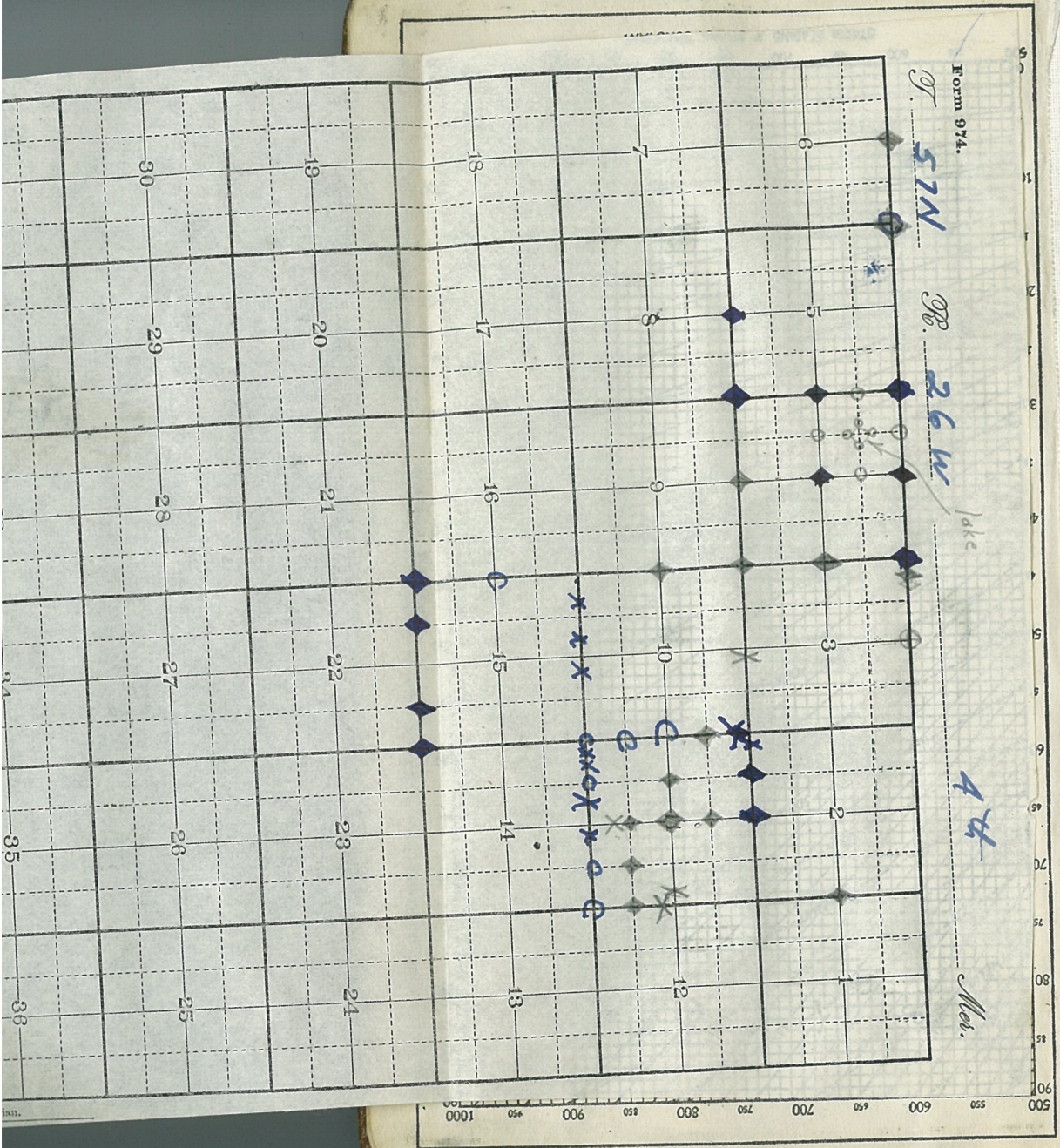
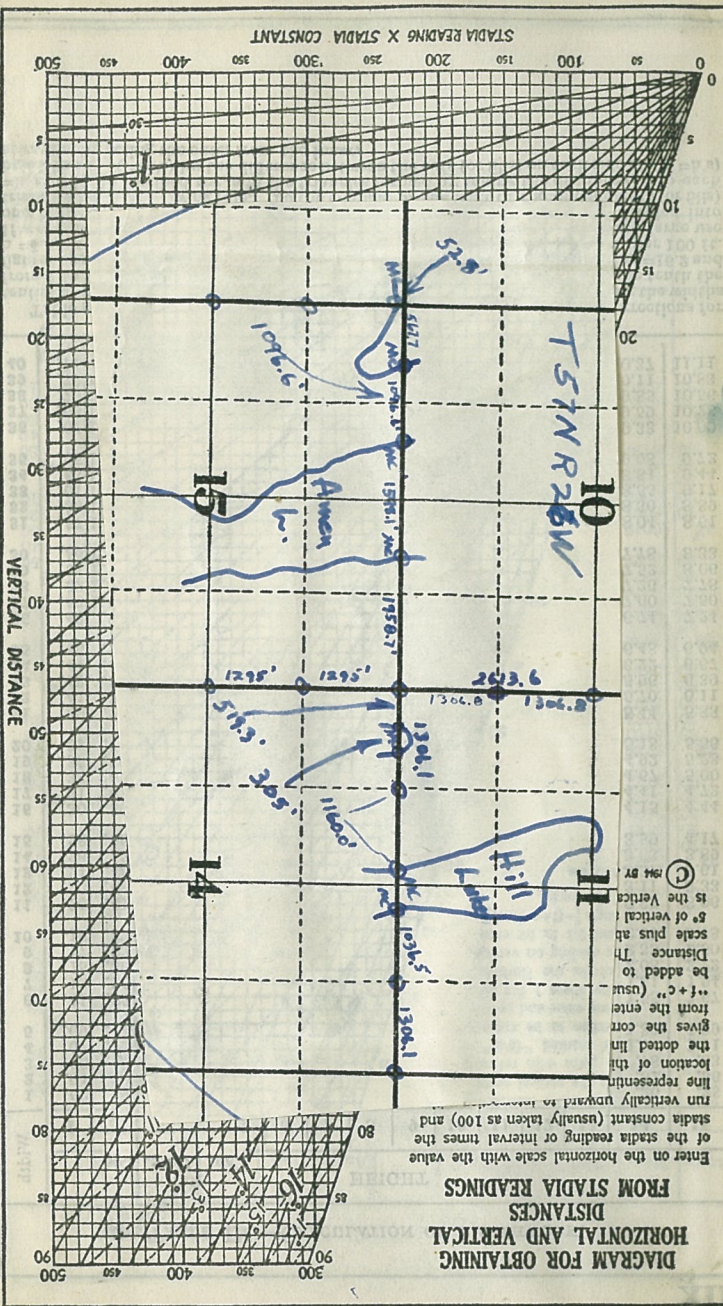
6	5	4	3	2	1
7	8	9	10	11	12
18	17	16	15	14	13
19	20	21	22	23	24
30	29	28	27	26	25
31	32	33	34	35	36

True Meridian.

8-257

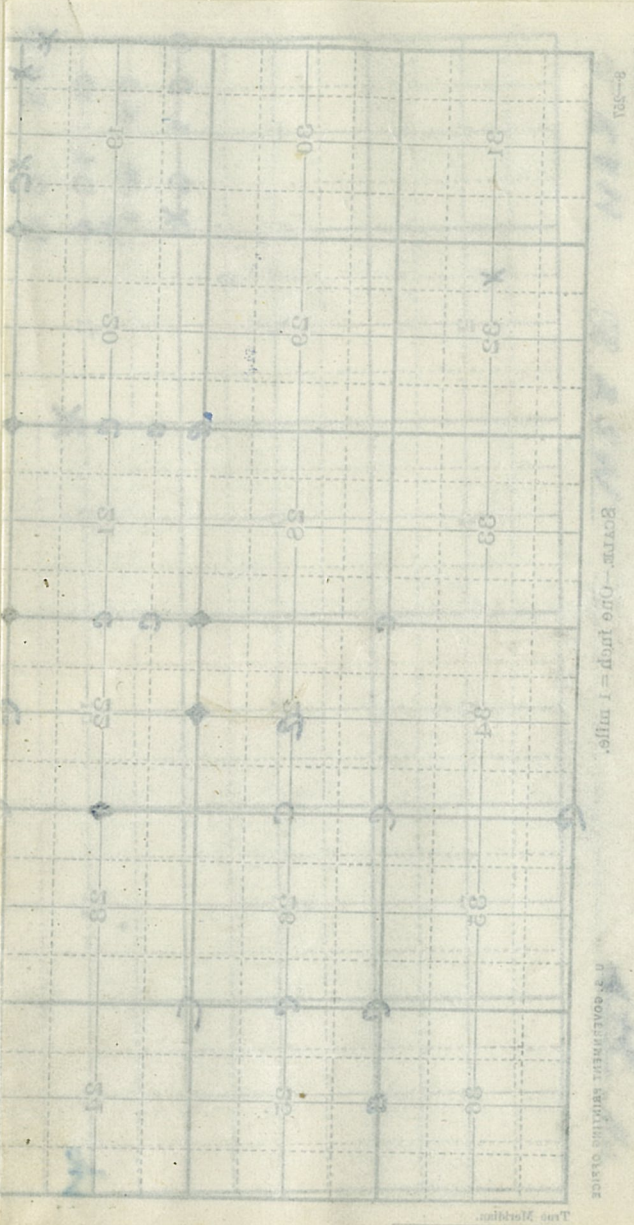
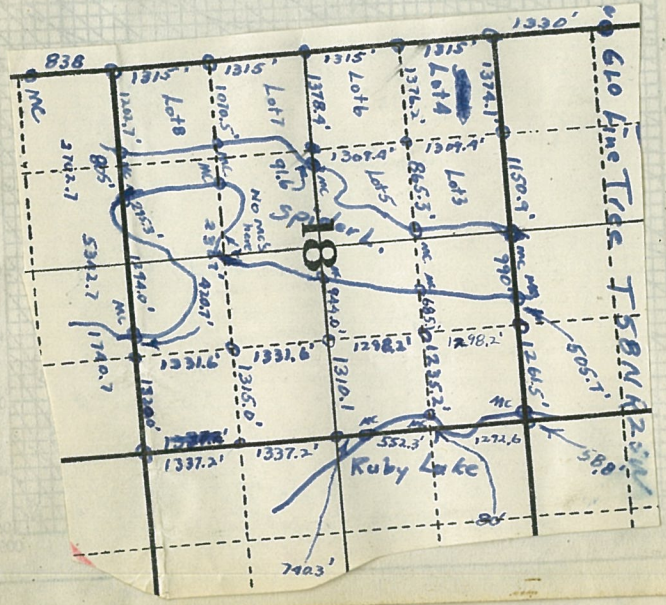
SCALE.—One inch = 1 mile.

U. S. GOVERNMENT PRINTING OFFICE



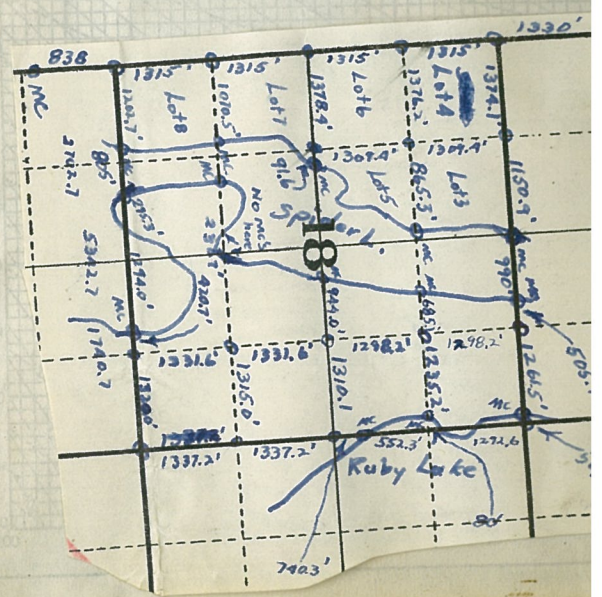


- Legend:
- ◆ good corners (sec, 1/4) (1/2)
 - X Meander Corners (good)
 - ◇ Approx corners
 - C County Corners



58-25

- ◆ good corners (sec, 1/4, 1/2)
- X Meander Corners (good)
- ◇ Apprx corners
- C County Corners

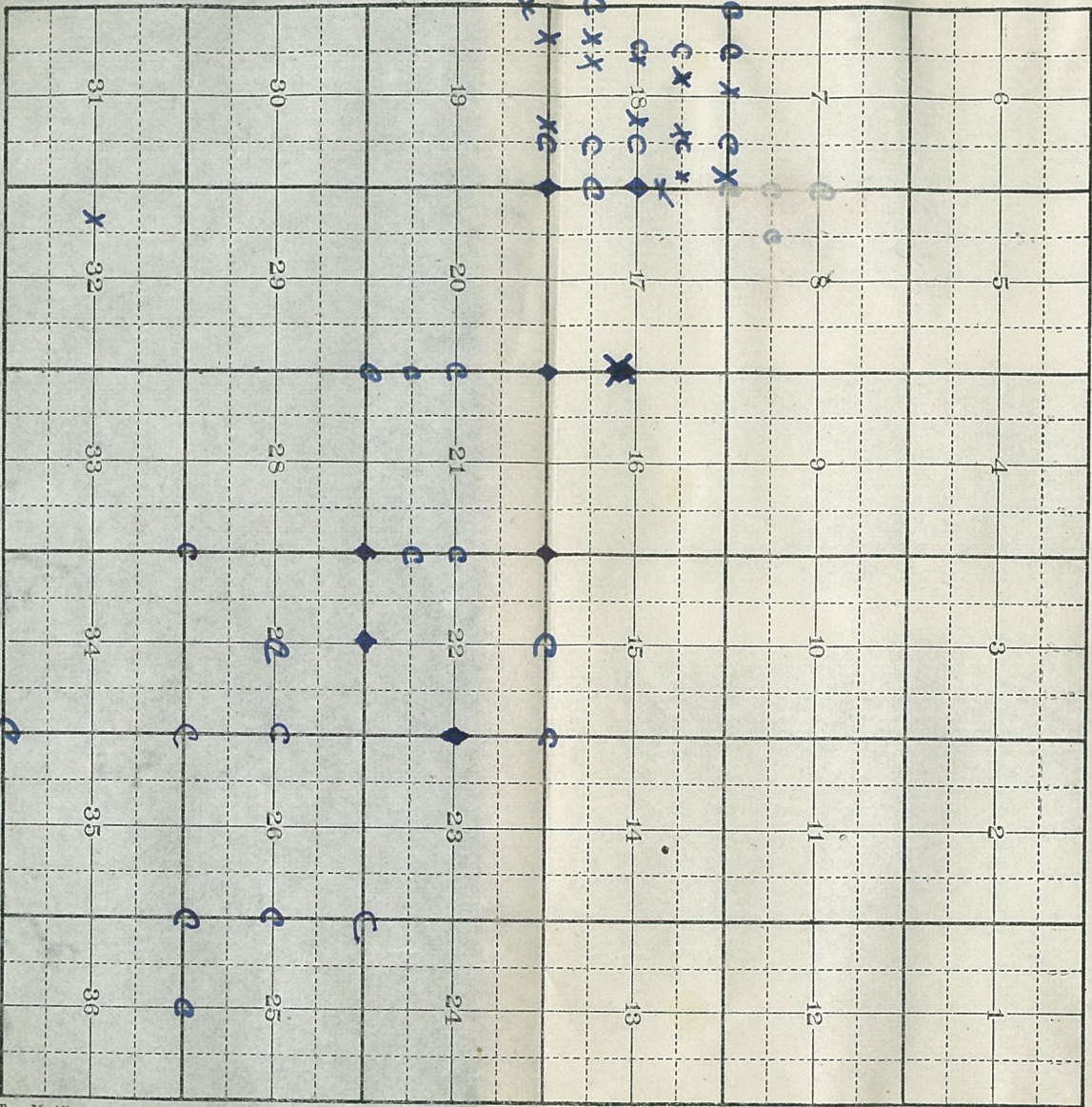


Form 974.

T. 58 N

R. 25 W

4th Mer.



8-227

SCALE - One Inch = 1 mile.

U. S. GOVERNMENT PRINTING OFFICE

True Meridian.