

FIELD

58-25
T58NR25W

NEW YORK
1880

FIELD
TRANSIT BOOK

No. 42

CCC

42

EUGENE DIETZGEN CO.

DRAWING MATERIALS, MATHEMATICAL and
SURVEYING INSTRUMENTS

Chicago New York San Francisco New Orleans Pittsburg Toronto

Distances from Center of Roadway for Cross-Sectioning
Roadway 16 feet wide. Side Slopes 1 on 1.
For Single Track Embankment.

H	0	.1	.2	.3	.4	.5	.6	.7	.8	.9	H
0	8.0	8.1	8.2	8.3	8.4	8.5	8.6	8.7	8.8	8.9	0
1	9.0	9.1	9.2	9.3	9.4	9.5	9.6	9.7	9.8	9.9	1
2	10.0	10.1	10.2	10.3	10.4	10.5	10.6	10.7	10.8	10.9	2
3	11.0	11.1	11.2	11.3	11.4	11.5	11.6	11.7	11.8	11.9	3
4	12.0	12.1	12.2	12.3	12.4	12.5	12.6	12.7	12.8	12.9	4
5	13.0	13.1	13.2	13.3	13.4	13.5	13.6	13.7	13.8	13.9	5
6	14.0	14.1	14.2	14.3	14.4	14.5	14.6	14.7	14.8	14.9	6
7	15.0	15.1	15.2	15.3	15.4	15.5	15.6	15.7	15.8	15.9	7
8	16.0	16.1	16.2	16.3	16.4	16.5	16.6	16.7	16.8	16.9	8
9	17.0	17.1	17.2	17.3	17.4	17.5	17.6	17.7	17.8	17.9	9
10	18.0	18.1	18.2	18.3	18.4	18.5	18.6	18.7	18.8	18.9	10
11	19.0	19.1	19.2	19.3	19.4	19.5	19.6	19.7	19.8	19.9	11
12	20.0	20.1	20.2	20.3	20.4	20.5	20.6	20.7	20.8	20.9	12
13	21.0	21.1	21.2	21.3	21.4	21.5	21.6	21.7	21.8	21.9	13
14	22.0	22.1	22.2	22.3	22.4	22.5	22.6	22.7	22.8	22.9	14
15	23.0	23.1	23.2	23.3	23.4	23.5	23.6	23.7	23.8	23.9	15
16	24.0	24.1	24.2	24.3	24.4	24.5	24.6	24.7	24.8	24.9	16
17	25.0	25.1	25.2	25.3	25.4	25.5	25.6	25.7	25.8	25.9	17
18	26.0	26.1	26.2	26.3	26.4	26.5	26.6	26.7	26.8	26.9	18
19	27.0	27.1	27.2	27.3	27.4	27.5	27.6	27.7	27.8	27.9	19
20	28.0	28.1	28.2	28.3	28.4	28.5	28.6	28.7	28.8	28.9	20
21	29.0	29.1	29.2	29.3	29.4	29.5	29.6	29.7	29.8	29.9	21
22	30.0	30.1	30.2	30.3	30.4	30.5	30.6	30.7	30.8	30.9	22
23	31.0	31.1	31.2	31.3	31.4	31.5	31.6	31.7	31.8	31.9	23
24	32.0	32.1	32.2	32.3	32.4	32.5	32.6	32.7	32.8	32.9	24
25	33.0	33.1	33.2	33.3	33.4	33.5	33.6	33.7	33.8	33.9	25
26	34.0	34.1	34.2	34.3	34.4	34.5	34.6	34.7	34.8	34.9	26
27	35.0	35.1	35.2	35.3	35.4	35.5	35.6	35.7	35.8	35.9	27
28	36.0	36.1	36.2	36.3	36.4	36.5	36.6	36.7	36.8	36.9	28
29	37.0	37.1	37.2	37.3	37.4	37.5	37.6	37.7	37.8	37.9	29
30	38.0	38.1	38.2	38.3	38.4	38.5	38.6	38.7	38.8	38.9	30
31	39.0	39.1	39.2	39.3	39.4	39.5	39.6	39.7	39.8	39.9	31
32	40.0	40.1	40.2	40.3	40.4	40.5	40.6	40.7	40.8	40.9	32
33	41.0	41.1	41.2	41.3	41.4	41.5	41.6	41.7	41.8	41.9	33
34	42.0	42.1	42.2	42.3	42.4	42.5	42.6	42.7	42.8	42.9	34
35	43.0	43.1	43.2	43.3	43.4	43.5	43.6	43.7	43.8	43.9	35
36	44.0	44.1	44.2	44.3	44.4	44.5	44.6	44.7	44.8	44.9	36
37	45.0	45.1	45.2	45.3	45.4	45.5	45.6	45.7	45.8	45.9	37
38	46.0	46.1	46.2	46.3	46.4	46.5	46.6	46.7	46.8	46.9	38
39	47.0	47.1	47.2	47.3	47.4	47.5	47.6	47.7	47.8	47.9	39
40	48.0	48.1	48.2	48.3	48.4	48.5	48.6	48.7	48.8	48.9	40

Example—If point is 22.6 ft. above grade, how far should it be from center line to be a slope stake point? Ans. from Table 30.6. For same slopes but other widths of roadbed, correct above figures by one-half difference in width of roadbed; thus in example above, for 20 ft. roadbed distance will be $30.6 + (20 - 16) \div 2$ or 2 ft. added to $30.6 = 32.6$. For slopes of 1 on $1\frac{1}{2}$ see inside of back cover.

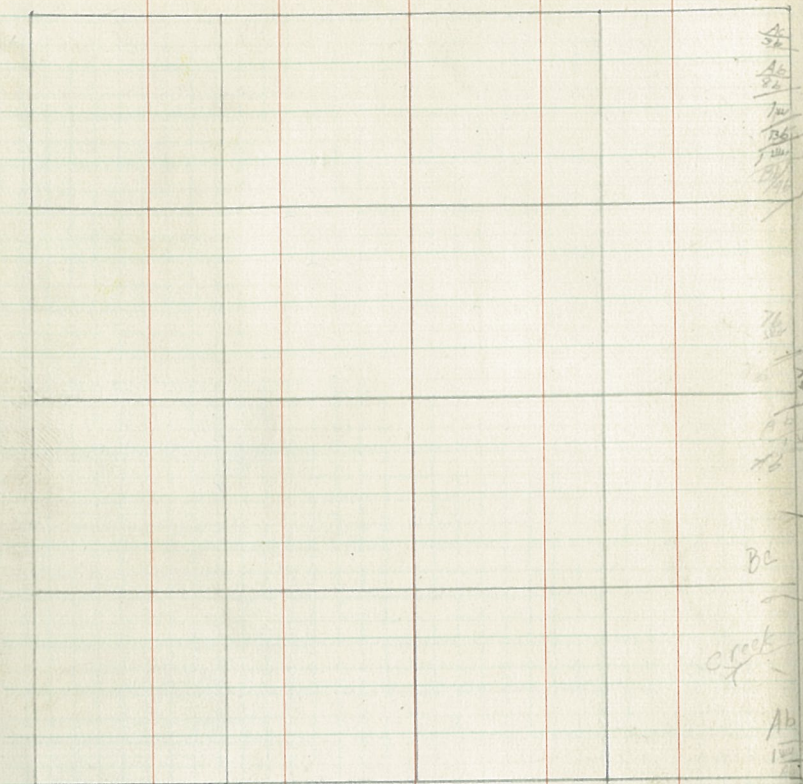
Copyright, 1914, by Eugene Dietzgen Co.

T. 58N, R. 25W.

The paper stock of this book is made of a high grade 50% rag paper having a water resisting surface and is sewed with Bing Special Enamel Waterproof Thread.

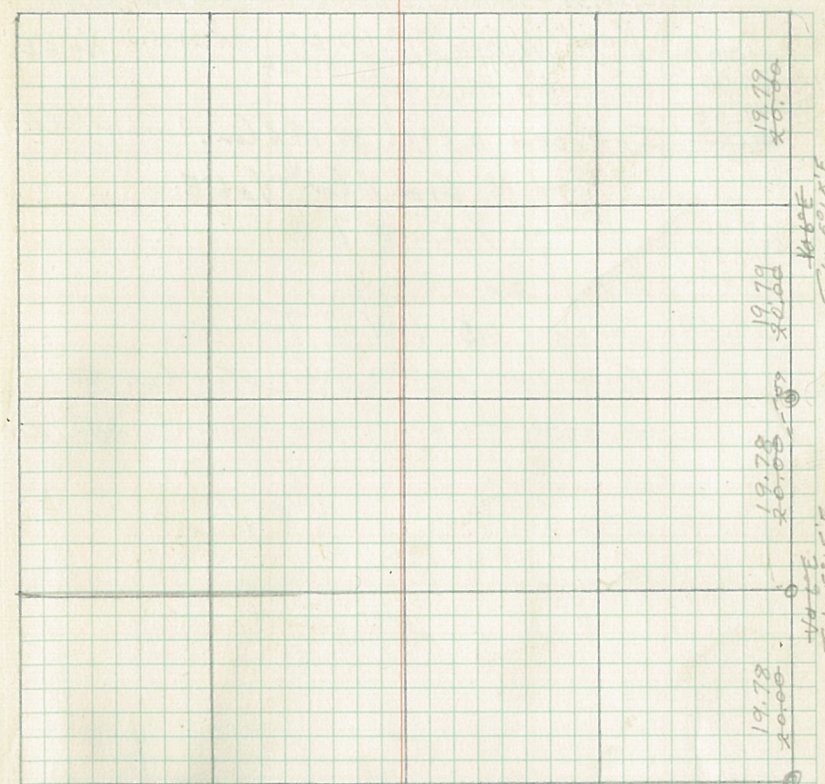
Made in U. S. A.

Timber Type Map



BT. Data

Cov.	Species	DBH	Bearing	Dist	Cor	Species	DBH	Bearing	Dist
NESE	W.P. Stamp	24	N55°W	0.17					
	W. Spruce	6	N75°E	0.25					
E 1/4	B. Spruce	10	S10°E	0.20					



W.T. Posters

Cov.	Species	DBH	Bearing	Dist	Cor.	Species	DBH	Bearing	Dist.
NE 1/4	Aspen	6	S30°W	0.19	1/4 #1				
E 1/4	Black	4	N44°E	0.16	2				
					3				
					4				
					5				
					6				
					7				
					8				
					9				
					10				
					11				
					12				
					13				
					14	Aspen	10	S45°W	0.07

5/26/38 - Peterson, Kleinendorst, Hakouaki, Embury, Wippler

13.90 Rand. N. from J.C. 1-12-6-7 T58NR24-25W. Va. 6°E
20.00 & creek 10 ft. wide - Flows NE
Set temp. 1/16 Cor. #14

39.58 Intersect 0.59 ch. W. of 1/4 Cor. Corrected 1/16 Cor. #14
~~40.47~~

Rand. N. from 1/4 Cor. Va. 6°E

20.00 Set temp. 1/16 Cor. #7

27.35 & ridge bears ESW.
23.35

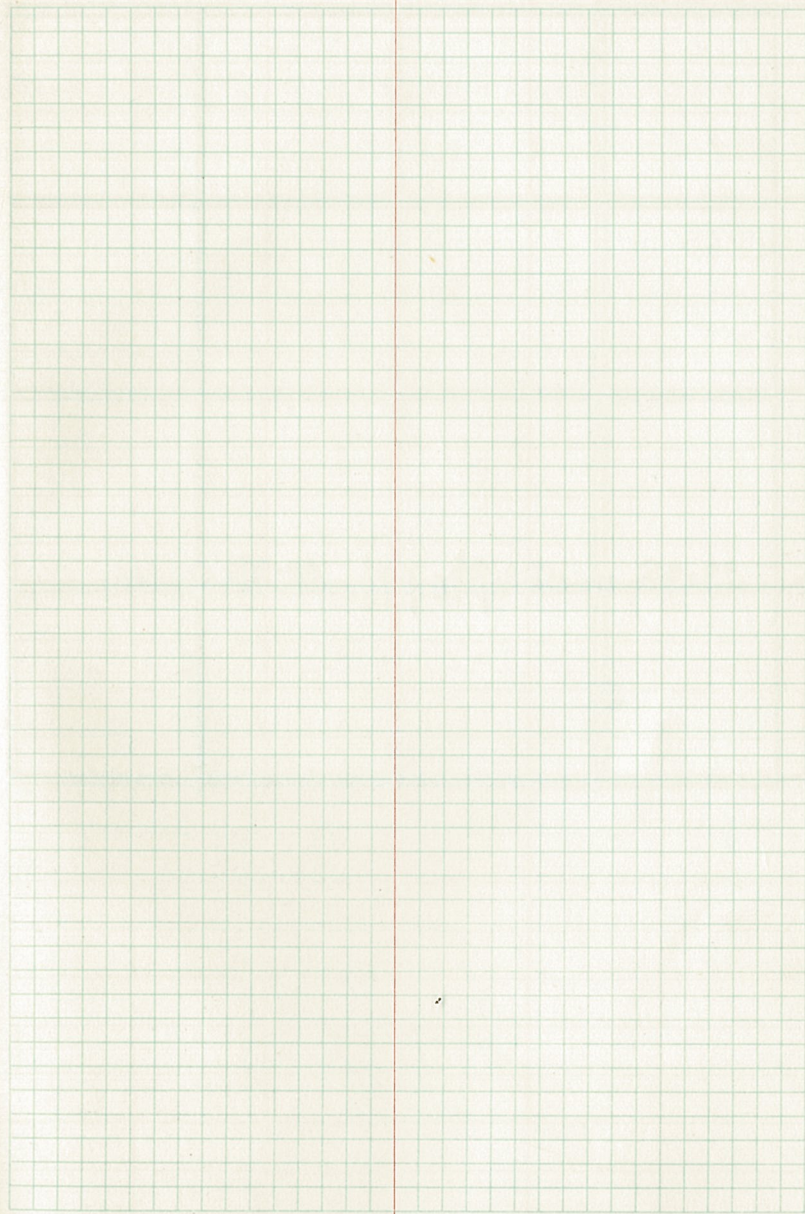
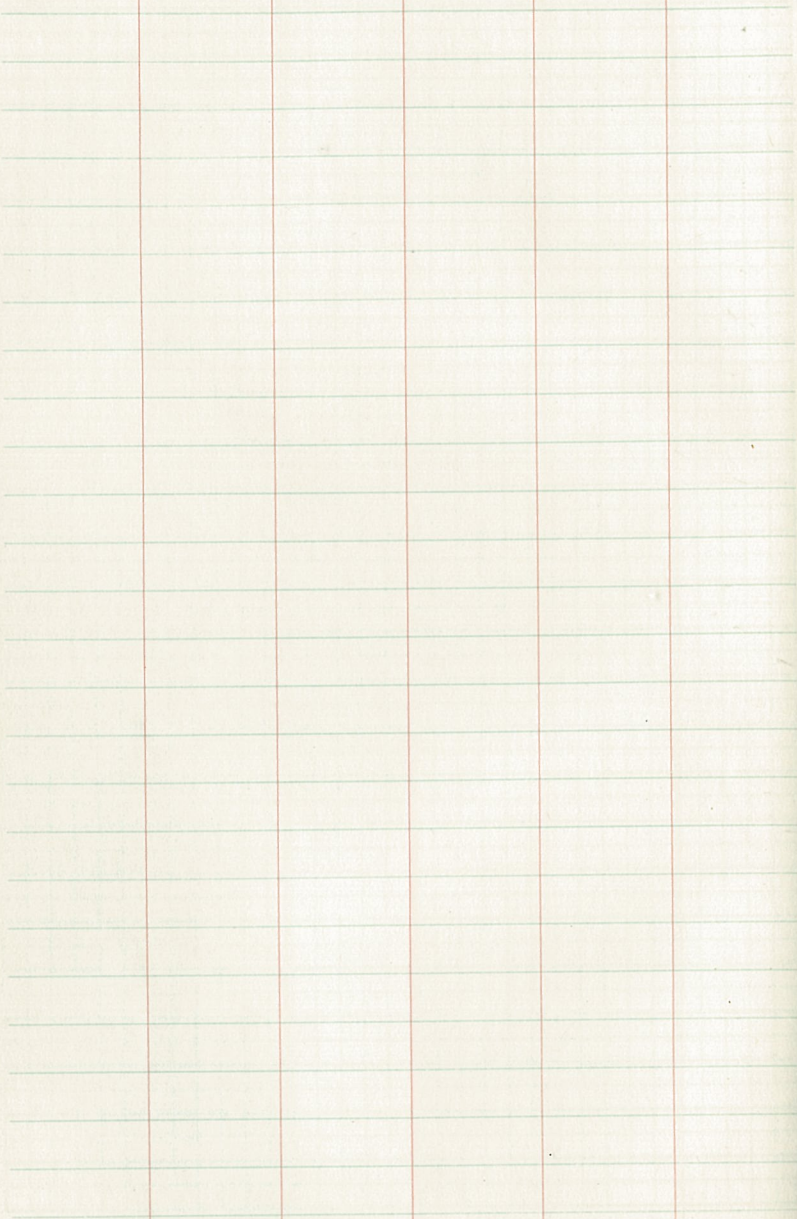
39.59 Intersect 0.58 ch. W. of Twp Cor.

Found line brushed S. from Twp Cor. 58

~~we cleared old line S. from Cor. Corrected 1/16 Cor.~~

A ledger page with horizontal blue lines and four vertical red margin lines. The page is otherwise blank.

A page with a green grid pattern and a vertical red margin line. The page is otherwise blank.



9/30/39

Random line N from $\frac{1}{16}$ cor # 16 S. 3,
T. 58 N. R. 25 W. Var. 70 E

12.4 Strike road

20.00 Set in $\frac{1}{16}$ cor # 11 S. 3

10/3/39

Random line E. from $\frac{1}{16}$ cor. # 11 S. 3 V. 6.30 E

5.48 Center of road

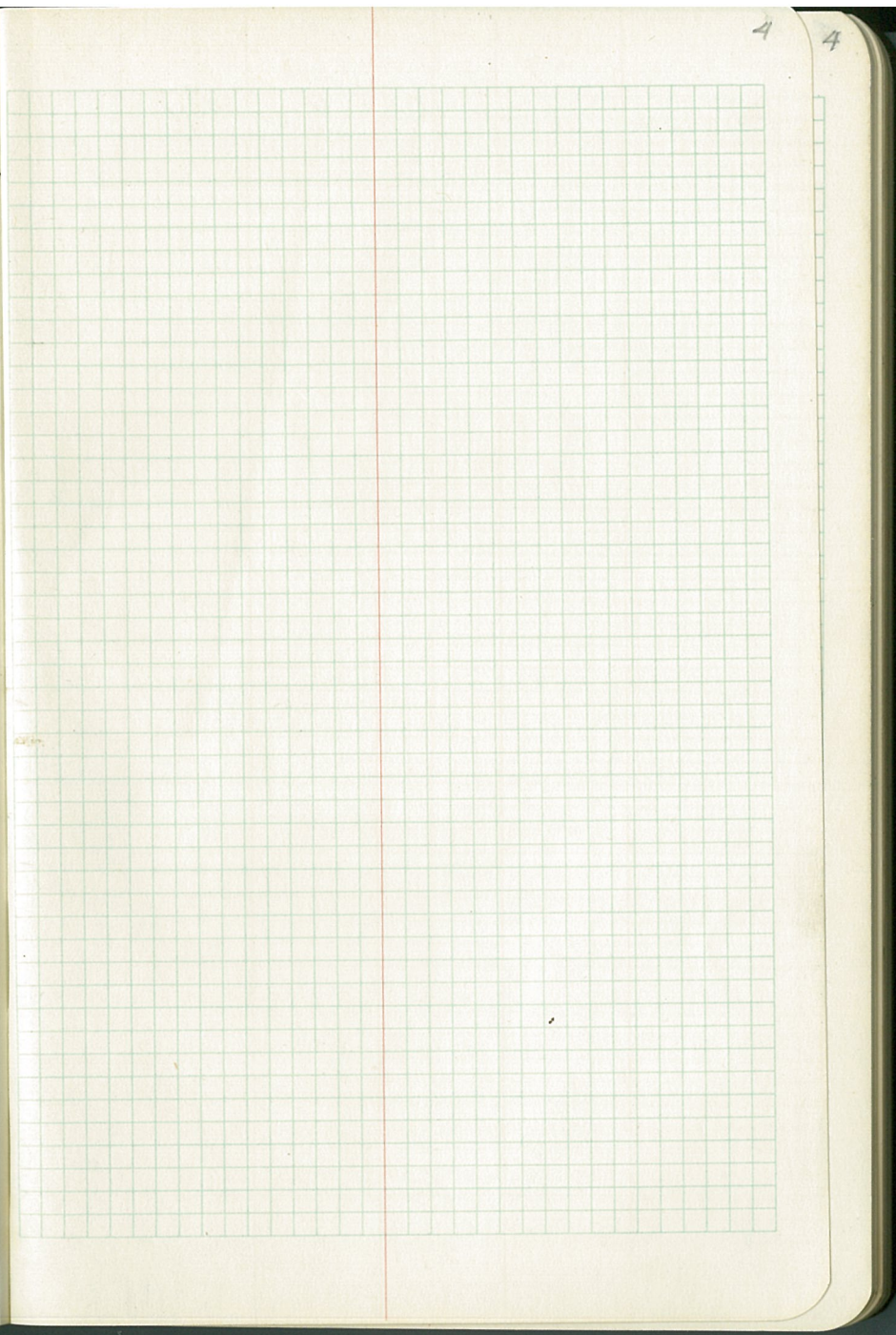
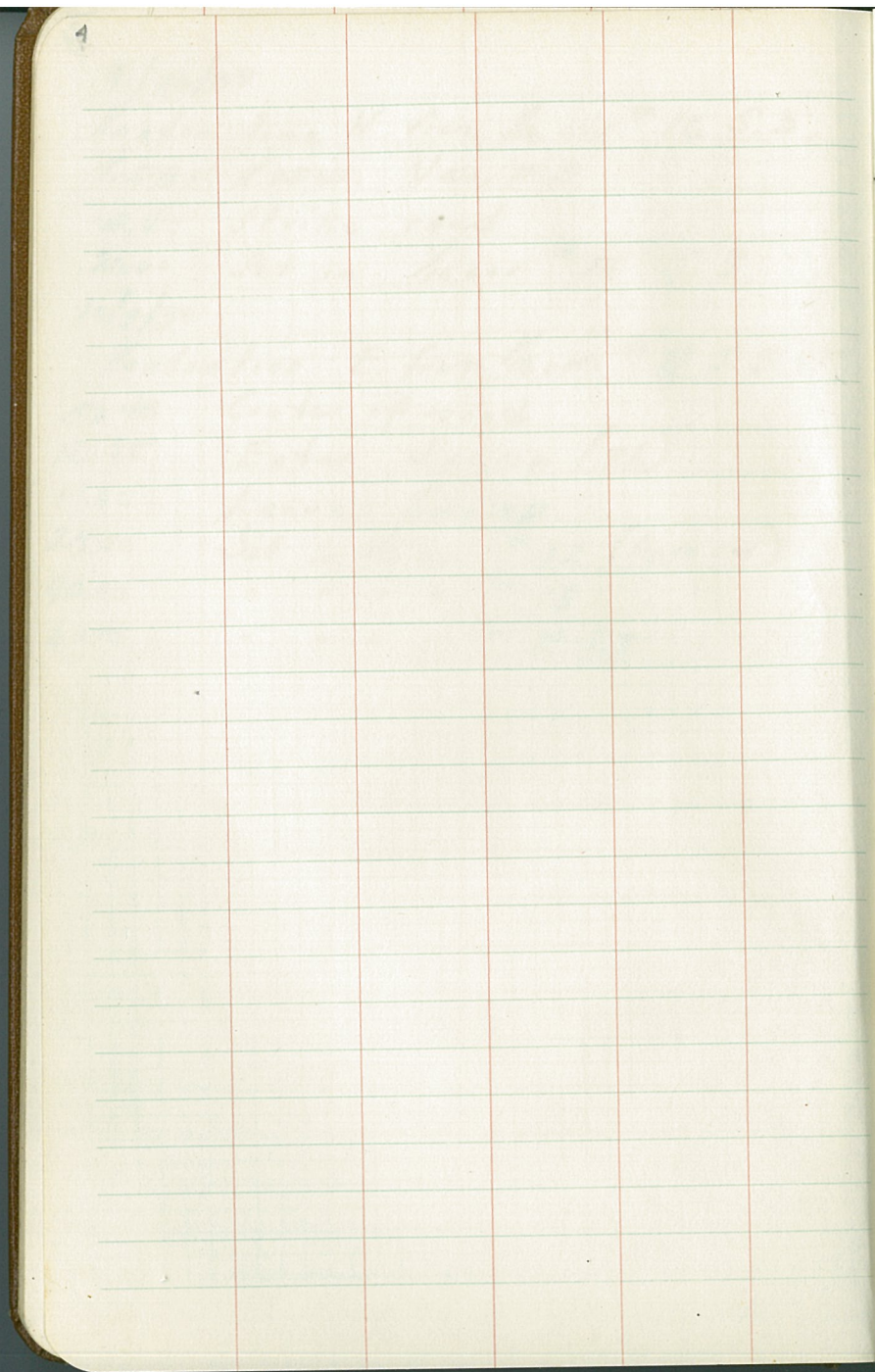
12.35 Enter Swamp (76)

19.00 Leave Swamp

20.00 Set in $\frac{1}{16}$ cor # 12 (App cor)

40.00 " " " " # 13 "

60.00 " " " " # 14 S. 3 "



10/4/39

Random line E from Sec Cor $\frac{4\beta}{9/10}$ - T. 58 N. R. 25 W.

Decl. 7°E.

20.00 - struck road.

20.05 - Set in $\frac{1}{16}$ cor #2.42.58 - Intersect N+S $\frac{1}{4}$ line .58 ch S of
 $\frac{1}{4}$ cor common to Sections 3+10Commenced at $\frac{1}{16}$ cor #1 S. 10 at
7°E Decl.

16.61 Enter Muskeg Swamp

20.00 Set up Approx Sec cor. $\frac{3/2}{10/11}$

12

1/16 County Corner. 3"x30" Scribed Post & 3/4" x 10" Iron Pipe
 12/7 Pine Stump 16' Balsam Pine Stump 12' W. Pine
 B.T's. S24°E 45ks S27°W 29ks N36°W 13ks N85°E 51ks

1/16 #1
 S.12

1/4 1/2

1/16 #2
 S.12

2/1
 11/12

1/16 #3
 S.12

1/16 #4
 S.12

1/16 #5
 S.12

1/16 #6
 S.12

1/16 #7
 S.12

1/4 County Corner 6"x3" Scribed Post
 12/7 Fuller Tom.
 B.T's. N33°W 91ks Form 458a on 4' Aspen S31°E 78ks.

1/16 #8
 S. 1/2

C 1/4
 S.12

12

1/16 #9
 S.12

1/4
 11/12

1/16 #10
 S.12

1/16 #11
 S.12

S.M.C.
 S.12

S.M.C.
 S.12

S.M.C.
 S.12

1/16 #13
 S.12

S.M.C.
 S.12

12/7
 M.C.

M.C.
 12/7

12/7 County Corner. 4"x3" Scribed Post & 1"x6" Iron Pipe
 13/18 B.T's. Pine Stump N67°E 39ks

- 10 — Rand. N. from S.C. $\frac{12}{1318}$ Va. $6^{\circ}E$.
- 9.00 Strike Lake. Found 2 dilapidated County BT's but no corner.
Walked around lake & continued line from N. shore.
Assumed value of 26.25 ch (640 notes) for N. Shore.
- 33.00 Assumed change at $\frac{1}{2}$ creek. Swam creek & found
Cor. in swamp. Cor. is iron pipe set by County about 1915.
- 40.00 (Assumed) Rand. line intersects 0.09 ch E. of $\frac{1}{4}$ Cor. Sec. 7-12
- 20 — Rand. N. from $\frac{1}{4}$ Cor. Sec. 7-12. Va. $6^{\circ}E$
- 8.50 $\frac{1}{2}$ narrow ridge bears NE-SW.
- 23.00 $\frac{1}{2}$ small swamp 1 ch across, bears E-W.
- 39.98 Intersect 0.58 ch W. of S.C. 1-12-6-7. Compass
had bent needle pivot, so I assumed Va $6^{\circ}E$ to be
correct.
- Returned to point on line 19.99 ch N. & set $\frac{1}{16}$ Cor. 0.29 ch E.
- 30 — Rand. W. from S.C. 1-12-6-7 Va $6^{\circ}E$.
- 8:00 Enter swamp
- 19:00 Leave "
- 27:00 Enter "
- 31:00 Leave "
- 81.35 Intersect 0.23 ch S. of Temp. Cor. $\frac{211}{1112}$ set by runnings from N.C.
- 80.08 Intersect 0.75 ch S. of Cor. $\frac{211}{1112}$. See next page for
corner data
- 40 — Rand. W. from $\frac{1}{4}$ Cor. Sec. 12-7 T58N24-25W. Va $6^{\circ}E$
- 8:00 offset 1 ch N. to go around lake. $\frac{1}{16}$
- 24:00
~~24:00~~ Returned to original line
- 22:00 $\frac{1}{2}$ creek 0.07 ch wide.
- 10:00 set approx $\frac{1}{4}$ Cor. (Center)
- 60:00 set approx $\frac{1}{16}$ Cor. #9

Cor. Sec. 1-2-11-12 located from stumps. No scribbing found,
but Distances & bearings of 3 Pine BT's check. No trace
of Birch BT found.

79.44 Rand. line from MC (on Hunter Lake) intersect ~~0.58~~
W. of S. Cor. 1-2-11-12. 1.25

11/13
14/131/6#3
5.131/6#4
5.13S.M.C.
5.13S.M.C.
5.13S.M.C.
5.131/6#6
5.131/6#7
5.134
18/131/6#8
5.13C/4
5.131/6#9
5.134
19/131/6#10
5.13

Ranch near... 18-19-13-24

...

...

...

...

...

...

...

...

...

...

...

...

...

County Corner 6" X 3' scribed Post + 1" X 8" Iron Pipe
Form 458a on 4" Aspen 376°W 251ks

...

...

...

...

...

...

...

...

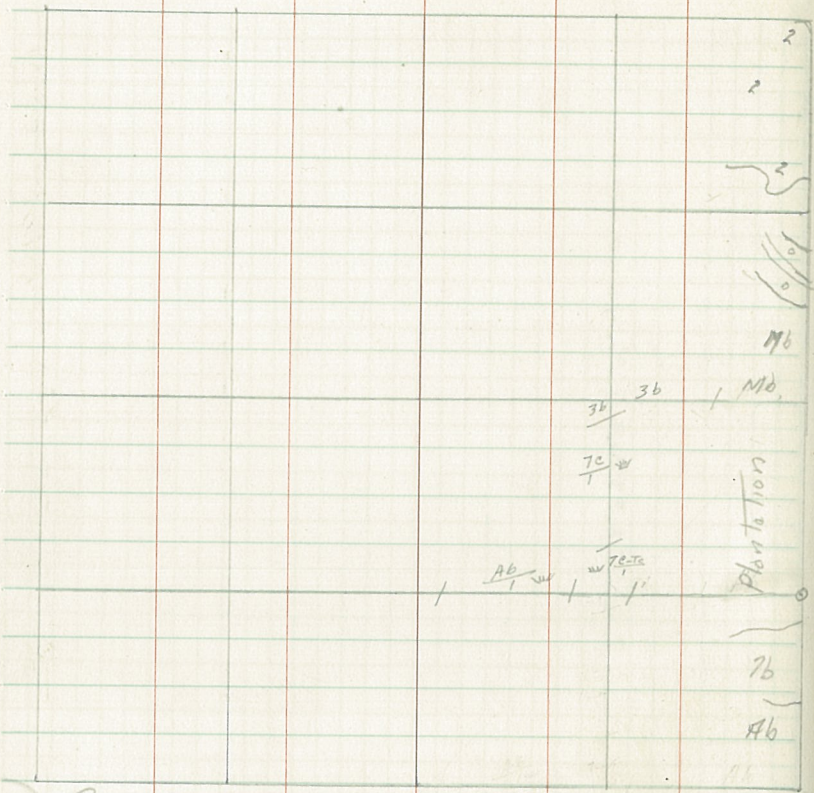
...

1/6#11
5.13S.M.C.
5.131/6#13
5.13S.M.C.
5.13

1/6#4 Doubtful County Cor. 2" X 3' scribed Post
5.13 Form 458a on 4" Aspen 361ks W 251T.

13/18 F.S. Approx. 2" X 30" Aspen Post set from B.T's
29/19 County B.T's. Cedar Stamp Cedar Stamp
N63°E 501ks S55°E 371ks

1/6#15
5.13M.C./13
2913/1
22/M.C.S.M.C.
5.1314/13
23/24



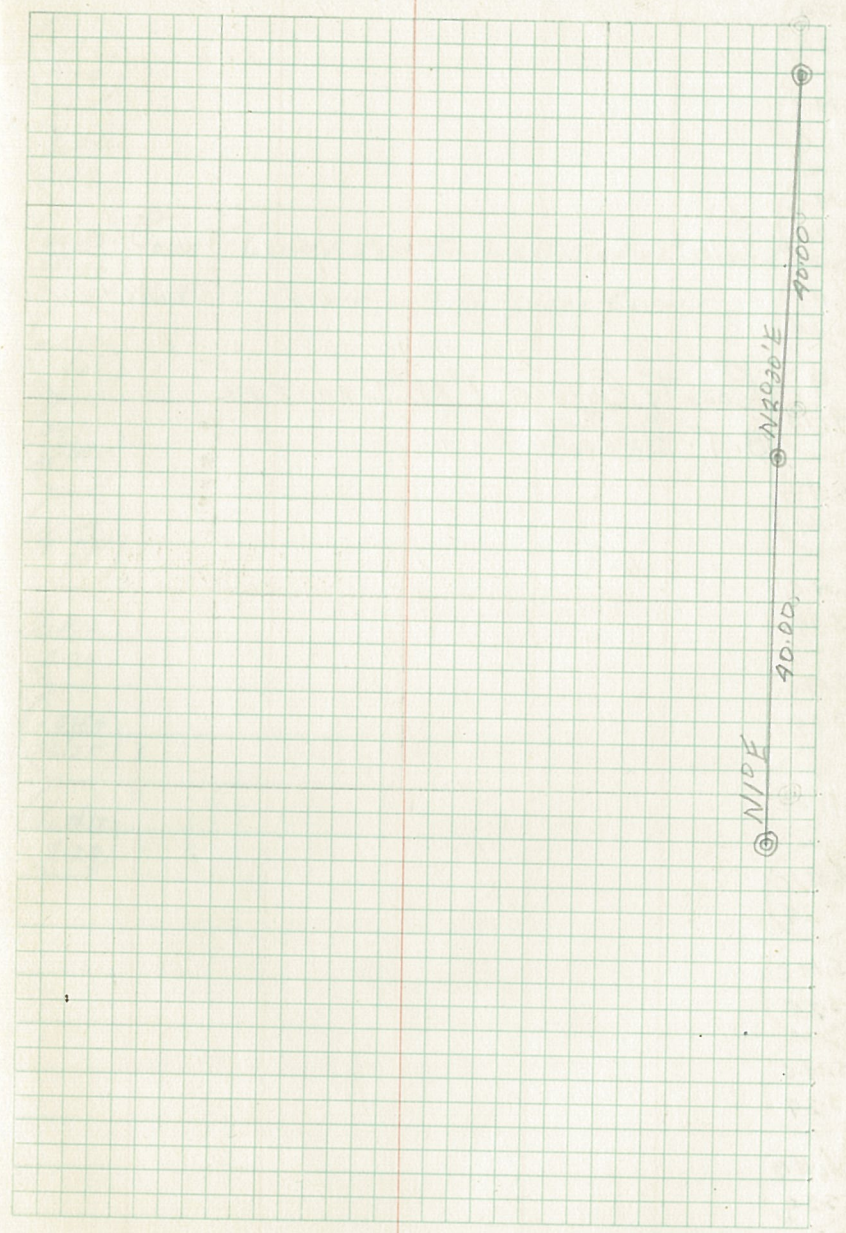
13/18 County Corner 2" Aspen Apprx. Post set from B.T's.
 29/19 Cedar Stump Cedar Stump
 B.T's. N69°E 50k; S55°W 87k

NC/13
 /29

13/
 29/M.C.

14/13
 23/29

1/6 #3
 3.29



1/6 #9

5.29

S.M.C.

5.29

S.M.C.

5.29

1/6 #1

5.29

1/4

29/19

County Corner. 1" X 8" Iron Pipe
B. T. Pine Stamp
5320E 20ks

1/6 #8

5.29

S.M.C.

5.29

S.M.C.

5.29

1/4

23/29

1/6 #10

5.29

S.M.C.

5.29

S.M.C.

5.29

1/6 #12

5.29

S.M.C.

5.29

1/6 #19

5.29

29/19

25/30

County Corner. 3" X 30" Scribbled Post + 1" X 8" Iron Pipe
No B.T.s. Corner sets in fence corner

M.C. 29

125

29/

25/M.C.

1/4 29

125

1/6 #16

5.29

23/29

26/25

1/6 #13

5.29

Rand. N. from $\frac{1}{4}$ Cor. 25-30 T58N R24-25W. Va. 6° E

36.70 X Cor. Sec. 24-25-19-30.

Set $\frac{1}{16}$ Cor. 19.35 ch. N. of $\frac{1}{4}$ Cor. Fence line along entire $\frac{1}{2}$ mile.

0 Rand. W. from same $\frac{1}{4}$ Cor. Va. 7° E
 20.00 Follow old fence line first 17 chains
 Set approx. $\frac{1}{16}$ Cor. ~~#7~~ #8

48.00 Strike County Road & follow same west.

60.18 Set approx. $\frac{1}{16}$ Cor. #9

76.00 Leave Road.

79.30 County Corner ($\frac{1}{4}$ Sec. 25-26)

0 Rand. N. from approx. $\frac{1}{16}$ Cor. #9. Va. 7° E
 3.00 Cross Road & enter garden

20.00 Leave garden.

20.00 Set approx. $\frac{1}{16}$ Cor. #4.

40.00 Intersect Sec. line 1.87 ch. W. of $\frac{1}{16}$ Cor. #2 S. 25.

0 Rand. W. from approx. $\frac{1}{16}$ Cor. #4

1.19 Cross fence

3.20 Cross old road.

18.58 Intersect Sec. line 0.16 ch. S. of approx. $\frac{1}{16}$ Cor. #3

0 Rand. S. from $\frac{1}{4}$ Cor. 25-26 Va. 6° E

18.73 Enter Swamp

26.00 Leave Swamp

31.98 Enter Swamp.

? Intersect 1.36 ch. E. of S.C. 25-26-35-36. Did not take measurement as water was too deep to chain and topography would not permit triangulation with compass.

0 Rand. E. from J.C. 23-24-25-26

13.00 Old road.

15.00 Old fence

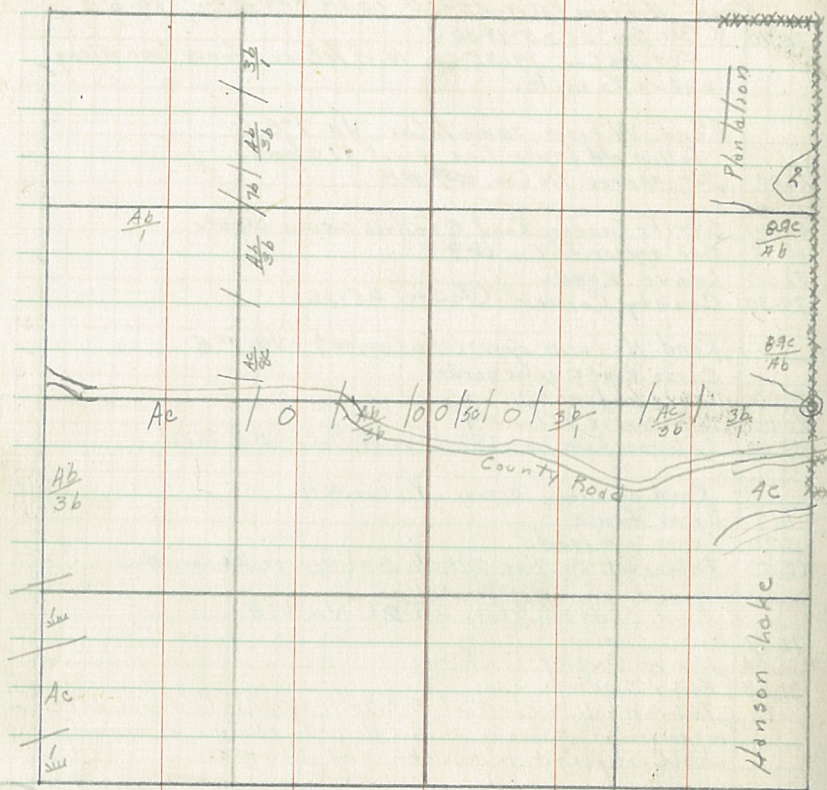
41.00 Lake

0 Rand. W. from $\frac{1}{4}$ Cor. 25-26 Va. 6° E

~~37.00 Old road~~

~~45.00 Tract Trail~~

~~80.00 Approx. # Cor. 26-27~~



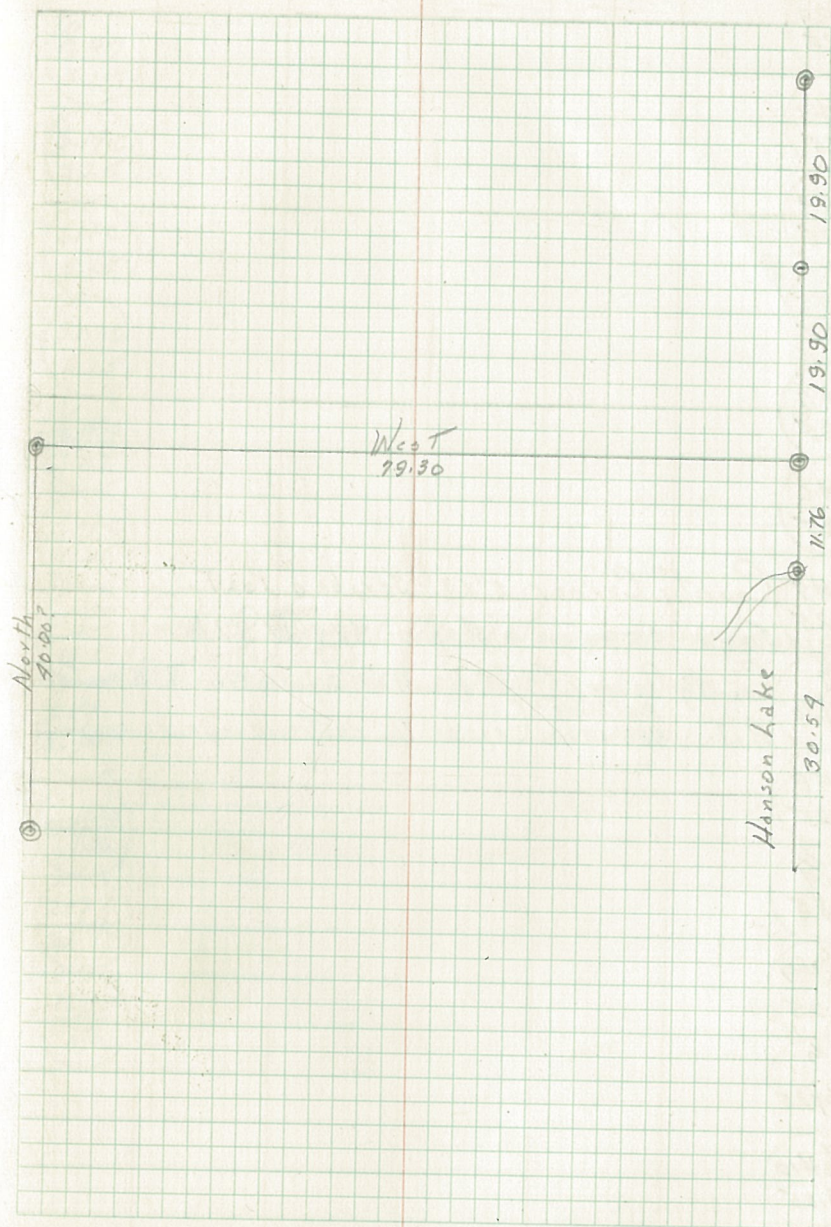
29/19 County Corner 3" x 30" scribed Post + 1" x 8" Iron Pipe
 25/30 Cov. 14 find NO B.T.'s. Corner sets in fence corner.

MC/29
 1/25

29/1
 25/MC

1/4 29
 25

1/16 #2
 5.25



25

23/29
26/25

1/6 #3
5.25

1/6 #4
5.25

1/6 #5
5.25

1/6 #6
5.25

S.M.C.
5.25

1/6 #7 County Corner 2"x3' scribed Post.
5.25

Form 45Ba on 6" Aspen 5740W 371ks

1/4 County Corner. (Post should set in fence corner but is not visible
25/30 Pine Stump
B.T. N88°W 521ks (or deathly destroyed in fence building.)

1/6 #8
5.25

C/4
5.25

1/6 #9
5.25

1/4
26/25

1/6 #10
5.25

25

1/6 #11
5.25

S.M.C.
5.25

S.M.C.
5.25

S.M.C.
5.25

1/6 #13
5.25

S.M.C.
5.25

25/30 G.h. O. Corner. (No post or pipe visible because
M.C. Tam Stub
B.T. N25°W 501ks off leading of area)

25/36 M.C.

M.C. 25/36

25/34 M.C.

26/25
35/36

a- Rand. W. from approx $\frac{1}{2}$ Cor. #7 Va 7^oE
 18.87 Intersect E. $\frac{1}{2}$ line 0.72 ch S. of approx ~~to~~ 20 ch. mark.
 20.00 Set approx $\frac{1}{2}$ Cor. #6
 40.00 " " $\frac{1}{2}$ Cor. #5
 60.00 " " $\frac{1}{2}$ Cor. #4
 77.60 Intersect Sec. line (Rand.) 1.76 ch S. of approx. $\frac{1}{2}$ Cor.

o- Rand. W. from Cor. Sec. 25-26-35-36 Va 6^oE
 0.00 offset 4 ch. S. ground swamp.
 11.00 Set back on original line.
 20.00 Set approx. $\frac{1}{2}$ Cor.
 40.00 Set approx. $\frac{1}{2}$ Cor. # Sec. 26-35.
 48.00 Small lake 50 yk N. of line.
 60.00 Beaver flowage too deep to cross. Abandoned line.

o- Rand. E. from $\frac{1}{2}$ Cor. #10. Va. 6^oE
~~7.53 Cross road.~~
~~18.90 Intersect $\frac{1}{2}$ line 0.22 ch E. of approx. $\frac{1}{2}$ Cor.~~
 20.00 Set approx. $\frac{1}{2}$ Cor. #11

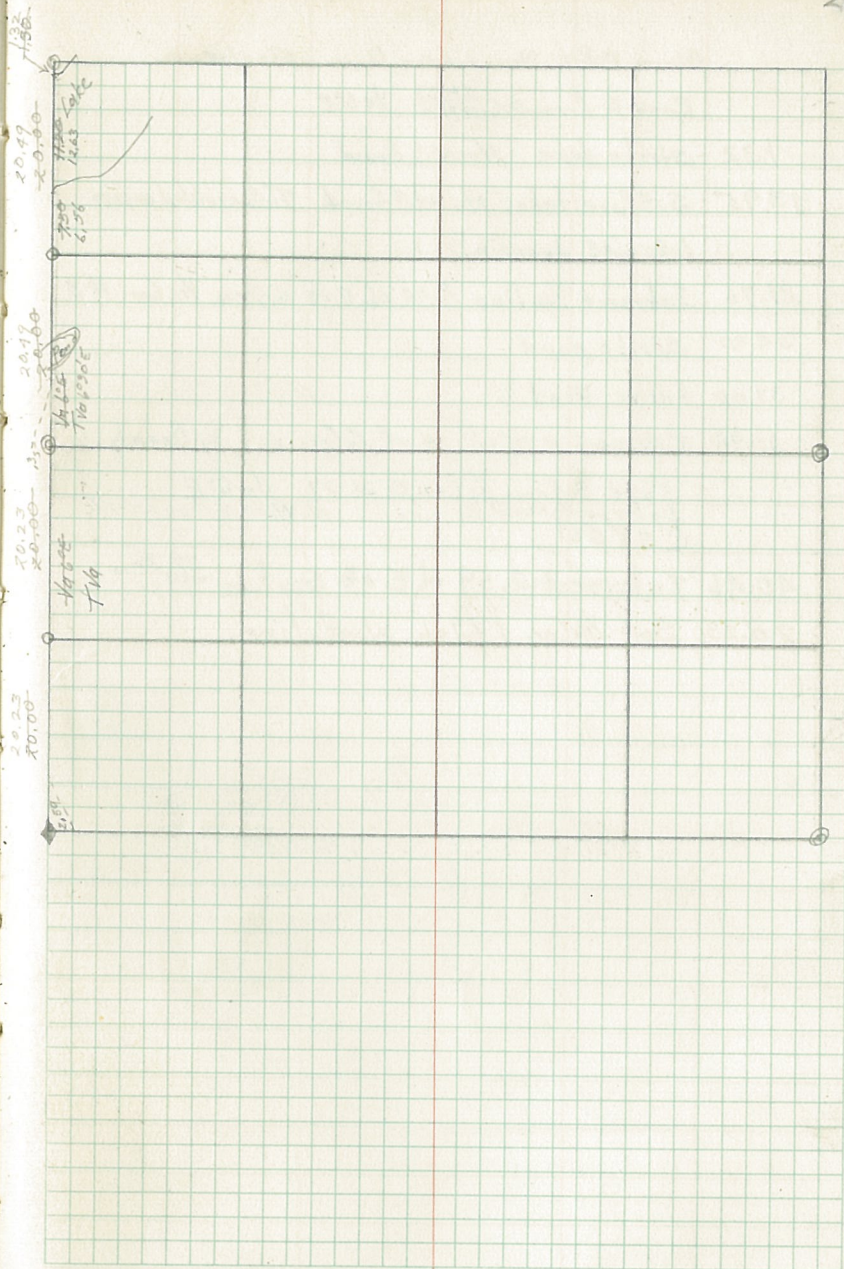
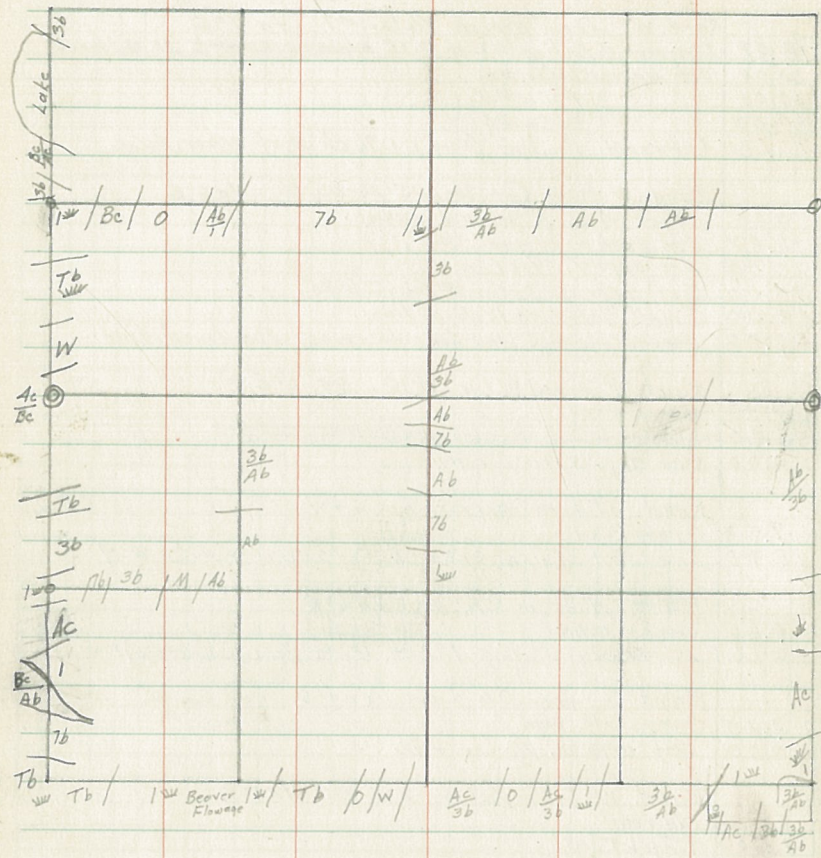
o- Rand. N. from approx $\frac{1}{2}$ Cor. #11
 7.53 Cross Road.
 18.90 Intersect $\frac{1}{2}$ line 0.22 ch E. of approx. $\frac{1}{2}$ Cor. #9

o- Rand. N. from C $\frac{1}{2}$ Cor. Va 6^oE
 0.65 Cross road.
 20.18 Intersect $\frac{1}{2}$ line 1.12 ch. E. of $\frac{1}{2}$ Cor. (approx) #5

o- Rand. S. from OH Cor. Va 6^oE
 2.25 Cross old road.
 20.00 Set approx. $\frac{1}{2}$ Cor. #12

o- Rand. W. from $\frac{1}{2}$ Cor. 25-26 Va 6^oE
 37.00 Old road
 45.00 Truck trail
 80.00 Temp. $\frac{1}{2}$ Cor 26-27

o- Rand. S. from $\frac{1}{2}$ Cor. #1 Va 6^oE
 49.60 Intersect $\frac{1}{2}$ line 0.20 ch W. of approx. $\frac{1}{2}$ Cor. #8



Peterson, Fidelity, Pless, Anderson, Johnson 5/20/38

○ Rand. S. from S.E. $\frac{22}{27}$ $\frac{23}{26}$ $\frac{1}{4}$ 6° E

1.32 Strike lake. No MC found

13.95 S. Shore lake. No MC found. Triangulated across lake with transit.

21.76 Intersect $\frac{1}{16}$ line 2.40 ch. E. of approx. $\frac{1}{16}$ Cor. #3

34.00 Strike pond

37.00 Leave Pond

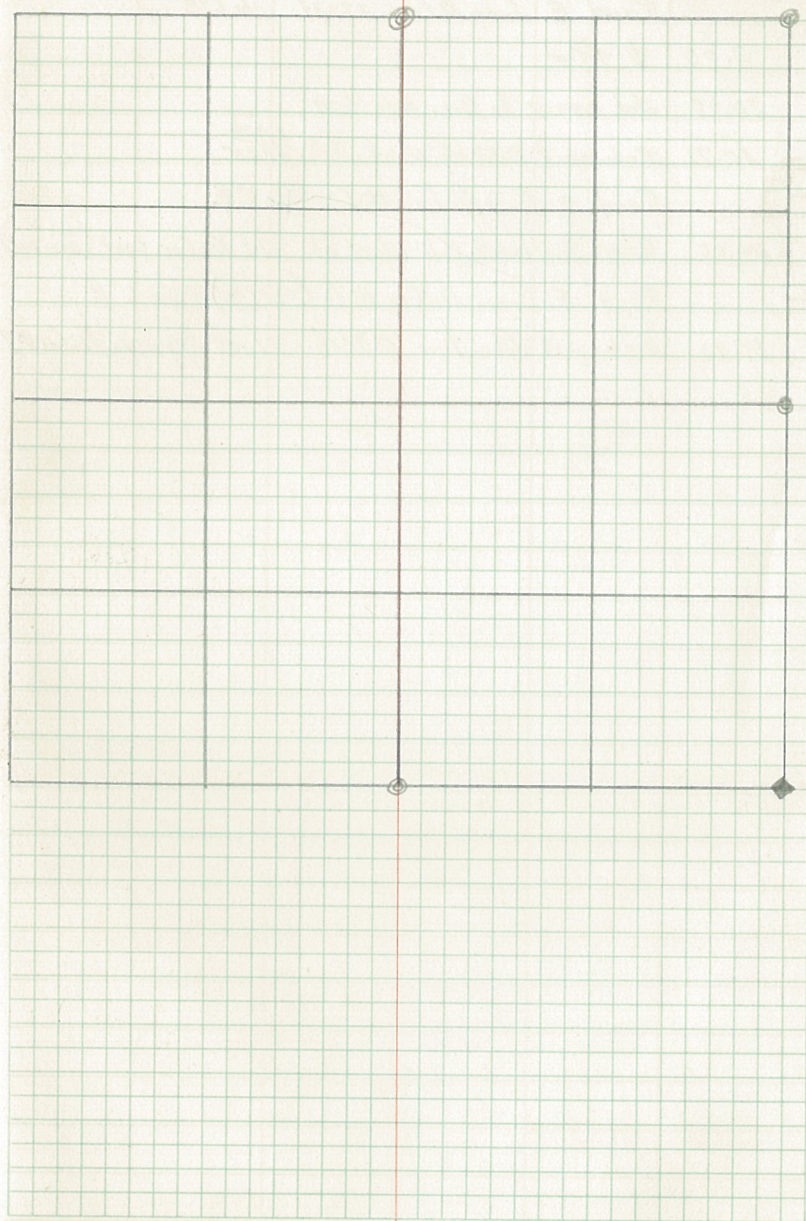
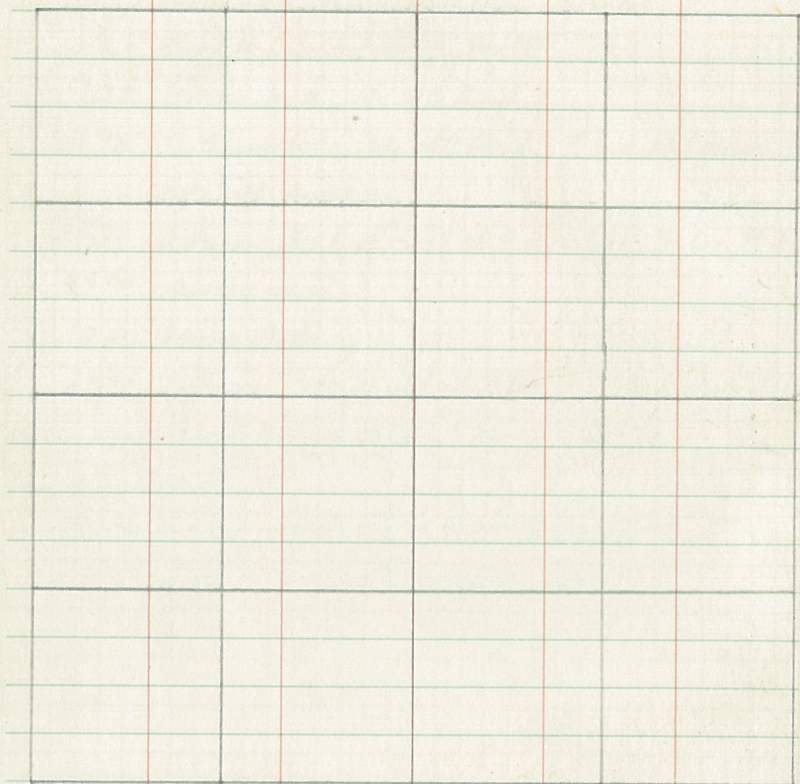
40.98 Intersect 0.35 ch. W. of $\frac{1}{4}$ Cor. set by County.

○ Rand. S. from $\frac{1}{4}$ Cor. 2.26-27 $\frac{1}{4}$ 6° E
Intersect Rand. $\frac{1}{4}$ line ch. W. of $\frac{1}{4}$ Cor. 25-26
TT 581

40.46 Intersect 2.59 ch. E. of Sec. Cor. $\frac{27}{31}$ $\frac{26}{35}$

20.23 Set $\frac{1}{16}$ Cor. 1.29 ch. W. of line.

Timber Type Map



Rand. E. from $\frac{1}{4}$ Cor. 27-34 Va 6°E

2.00 ϕ Trail

20.00 Set approx. $\frac{1}{4}$ Cor. #16, S27

10.72 Intersect 0.13 ch N. of S.C. $\frac{27}{34}$
 $\frac{26}{35}$

0- Rand. S. from $\frac{1}{4}$ Cor. #1 Va 6°E

20.00 ~~Temp.~~ Intersect 0.10 ch W. of old $\frac{1}{4}$ Cor. post (not
scribed)

0- Rand. E. from $\frac{1}{4}$ Cor. #6 (approx) Va 6°E

19.92 Intersect Sec. line 0.32 ch. N. of Approx. $\frac{1}{4}$ Cor #7.

36

M.C.

36/31

25/

36/M.C.

M.C./25

36

25/

36/M.C.

26/25

35/36

1/16 #3

5.36

1/16 #4

5.36

S.M.C.

5.36

1/16 #5

5.36

S.M.C.

5.36

S.M.C.

5.36

S.M.C.

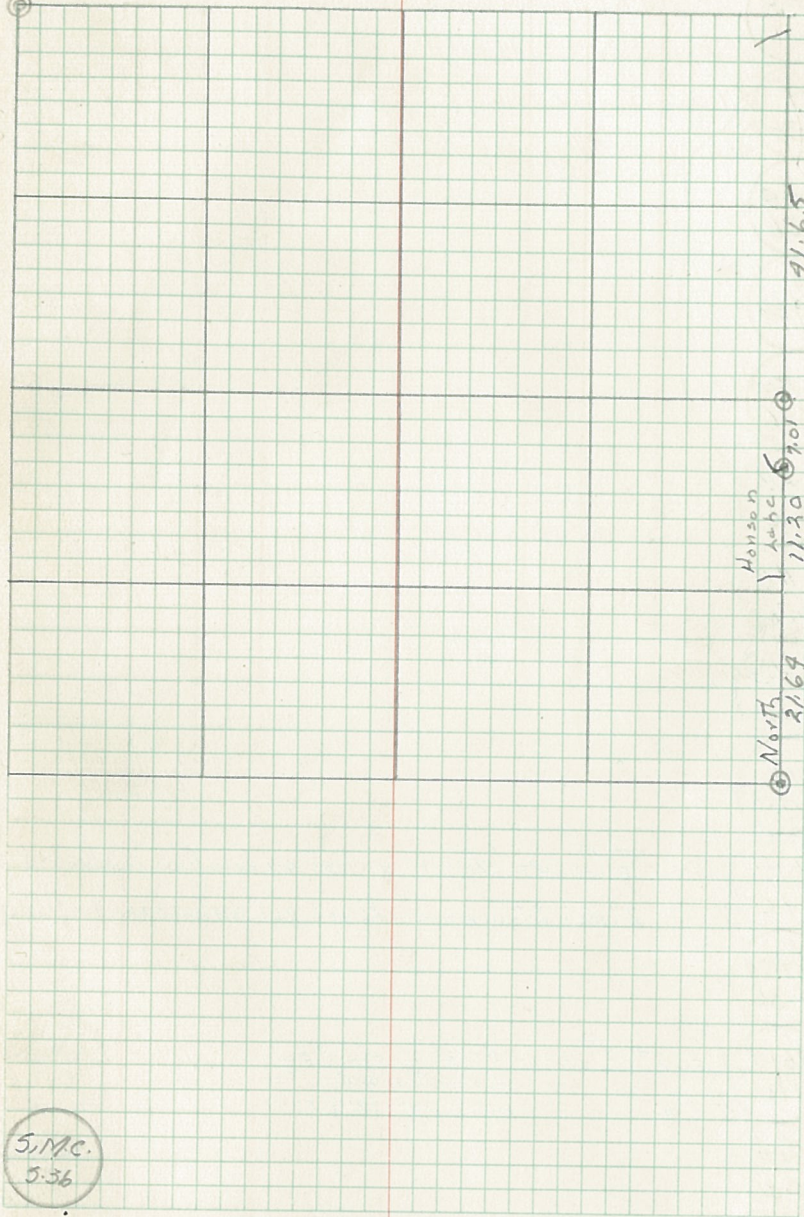
5.36

1/16 #1

5.36

1/4 County Corner 1" x 8" Iron Pipe
36+31 No Post or B.T's.

36



41.65

Holliston
11.30
11.30
6.70
11.30

North
2/69

S.M.C.
5.36

1/6 #8
5.36

C/4
5.36

1/6 #9
5.36

1/4
35/36

1/6 #10
5.36

1/6 #11
5.36

1/6 #12
5.36

1/6 #13
5.36

M.C.
36/31

36/31
M.C.

1/6 #14
5.36

36/31
1/6

1/6 #15
5.36

1/4
36
1

Road corner 39' N 1/2 E

1200 25' to old road

4000 10' to corner

4000 20' to corner

County Corner. No pipe or post as location is flooded

B.T's. 2" Ash Stumps. Could not get distances by for flowage

County Corner. 1" x 8" Iron Pipe
W. Pine Stump W. Pine Stump
N 59° E 291k S 82° E 391k



1/6 #16
5.36

35/36
2/1