

OFFICE

T57N-R25+26W

DIETZ  
D. H. H. H.

MINING

MINING

TRANSFER BOOK

No. 4971

CCC

38



# EUGENE DIETZGEN CO.

DRAWING MATERIALS, MATHEMATICAL and  
SURVEYING INSTRUMENTS

Chicago New York San Francisco New Orleans Pittsburg Toronto

Distances from Center of Roadway for Cross-Sectioning  
Roadway 16 feet wide, Side Slopes 1 on 1.  
For Single Track Embankment.

H	0	.1	.2	.3	.4	.5	.6	.7	.8	.9	H
0	8.0	8.1	8.2	8.3	8.4	8.5	8.6	8.7	8.8	8.9	0
1	9.0	9.1	9.2	9.3	9.4	9.5	9.6	9.7	9.8	9.9	1
2	10.0	10.1	10.2	10.3	10.4	10.5	10.6	10.7	10.8	10.9	2
3	11.0	11.1	11.2	11.3	11.4	11.5	11.6	11.7	11.8	11.9	3
4	12.0	12.1	12.2	12.3	12.4	12.5	12.6	12.7	12.8	12.9	4
5	13.0	13.1	13.2	13.3	13.4	13.5	13.6	13.7	13.8	13.9	5
6	14.0	14.1	14.2	14.3	14.4	14.5	14.6	14.7	14.8	14.9	6
7	15.0	15.1	15.2	15.3	15.4	15.5	15.6	15.7	15.8	15.9	7
8	16.0	16.1	16.2	16.3	16.4	16.5	16.6	16.7	16.8	16.9	8
9	17.0	17.1	17.2	17.3	17.4	17.5	17.6	17.7	17.8	17.9	9
10	18.0	18.1	18.2	18.3	18.4	18.5	18.6	18.7	18.8	18.9	10
11	19.0	19.1	19.2	19.3	19.4	19.5	19.6	19.7	19.8	19.9	11
12	20.0	20.1	20.2	20.3	20.4	20.5	20.6	20.7	20.8	20.9	12
13	21.0	21.1	21.2	21.3	21.4	21.5	21.6	21.7	21.8	21.9	13
14	22.0	22.1	22.2	22.3	22.4	22.5	22.6	22.7	22.8	22.9	14
15	23.0	23.1	23.2	23.3	23.4	23.5	23.6	23.7	23.8	23.9	15
16	24.0	24.1	24.2	24.3	24.4	24.5	24.6	24.7	24.8	24.9	16
17	25.0	25.1	25.2	25.3	25.4	25.5	25.6	25.7	25.8	25.9	17
18	26.0	26.1	26.2	26.3	26.4	26.5	26.6	26.7	26.8	26.9	18
19	27.0	27.1	27.2	27.3	27.4	27.5	27.6	27.7	27.8	27.9	19
20	28.0	28.1	28.2	28.3	28.4	28.5	28.6	28.7	28.8	28.9	20
21	29.0	29.1	29.2	29.3	29.4	29.5	29.6	29.7	29.8	29.9	21
22	30.0	30.1	30.2	30.3	30.4	30.5	30.6	30.7	30.8	30.9	22
23	31.0	31.1	31.2	31.3	31.4	31.5	31.6	31.7	31.8	31.9	23
24	32.0	32.1	32.2	32.3	32.4	32.5	32.6	32.7	32.8	32.9	24
25	33.0	33.1	33.2	33.3	33.4	33.5	33.6	33.7	33.8	33.9	25
26	34.0	34.1	34.2	34.3	34.4	34.5	34.6	34.7	34.8	34.9	26
27	35.0	35.1	35.2	35.3	35.4	35.5	35.6	35.7	35.8	35.9	27
28	36.0	36.1	36.2	36.3	36.4	36.5	36.6	36.7	36.8	36.9	28
29	37.0	37.1	37.2	37.3	37.4	37.5	37.6	37.7	37.8	37.9	29
30	38.0	38.1	38.2	38.3	38.4	38.5	38.6	38.7	38.8	38.9	30
31	39.0	39.1	39.2	39.3	39.4	39.5	39.6	39.7	39.8	39.9	31
32	40.0	40.1	40.2	40.3	40.4	40.5	40.6	40.7	40.8	40.9	32
33	41.0	41.1	41.2	41.3	41.4	41.5	41.6	41.7	41.8	41.9	33
34	42.0	42.1	42.2	42.3	42.4	42.5	42.6	42.7	42.8	42.9	34
35	43.0	43.1	43.2	43.3	43.4	43.5	43.6	43.7	43.8	43.9	35
36	44.0	44.1	44.2	44.3	44.4	44.5	44.6	44.7	44.8	44.9	36
37	45.0	45.1	45.2	45.3	45.4	45.5	45.6	45.7	45.8	45.9	37
38	46.0	46.1	46.2	46.3	46.4	46.5	46.6	46.7	46.8	46.9	38
39	47.0	47.1	47.2	47.3	47.4	47.5	47.6	47.7	47.8	47.9	39
40	48.0	48.1	48.2	48.3	48.4	48.5	48.6	48.7	48.8	48.9	40

Example—If point is 22.6 ft. above grade, how far should it be from center line to be a slope stake point? Ans. from Table 30.6. For same slopes but other widths of roadbed, correct above figures by one-half difference in width of roadbed; thus in example above, for 20 ft. roadbed distance will be  $30.6 + (20 - 16) \div 2$  or 2 ft. added to 30.6 = 32.6. For slopes of 1 on 1½ see inside of back cover.

Copyright, 1914, by Eugene Dietzgen Co.

Scanned

9-17-12

Rayney

The paper stock of this book is made of a high grade 50% rag paper having a water resisting surface and is sewed with Bing Special Enamel Waterproof Thread.

Made in U. S. A.



Lineal Survey Records of T57NR26W



Sec. 1

Pages 001-012  
are Blank



1217  
1318  
M.C.

1/6 #1  
5.13

M.C.  
12/13

12/13  
M.C.

11/12 County Corner. 4' scribed Aspen Post - 1 1/2" Iron Pipe  
14/13 2" Maple N60E 49ks 8" Ironwood  
B.S. 5" White Birch N92W 30ks, 6" White Birch N39E 31ks, S 23E 30ks

1/6 #3  
5.13

1/6 #4  
5.13

S.M.C.  
5.13

1/6 #5  
5.13

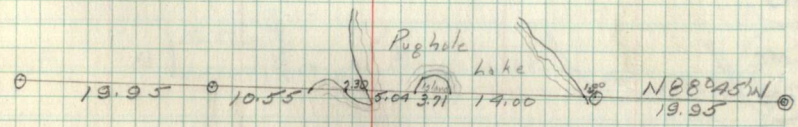
S.M.C.  
8.13

1/6 #6  
5.13

1/6 #7  
5.13

13/18  
M.C.

S.M.C.  
5.13



M.C.  
13/18

1/6 #8  
5.13



C 1/4

S. 13

1/6 #9

S. 13

S.M.C

S. 13

1/4

19713

1/6 #10

S. 13

1/6 #11

S. 13

S.M.C

S. 13

S.M.C

S. 13

S.M.C

S. 13

1/6 #13

S. 13

1/6 #14 County Corner. 5" x 5" Scribed Aspen Post. 1" x 8" Iron Pipe

S. 13

B.T.s. 9" Aspen 8" Aspen  
S76°W 451ks N260°E 931ks

13/18 County Corner. 9" x 3" Scribed Post + 1" x 6" Iron Pipe

29/19

B.T.s. 8" R. Pine 10" Aspen 8" Oak Form 458 on 8" Aspen  
S42°W 1071ks S59°E 174ks N160°E 451ks N29°W 351ks

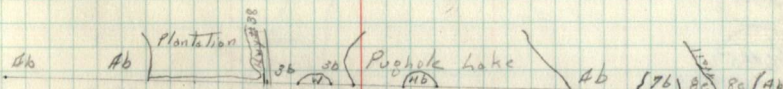
1/6 #18 F.S. Approx. 4" x 3" Squared Aspen Post

S. 13

Form 458 on 12" Aspen N34°E 251ks.

13

M.C. 29



13/29/M.C.

1/6 #16 F.S. Approx. 2" x 2" Squared Aspen Post

S. 13

Form 458 on Pine stump N82°E. 551ks.

14/13 F.S. Approx. 3" x 3" Squared Aspen Post

23/29

Form 458 on 6" Aspen S. 82°E 71ks.



180 N 32 W  
1112  
1973

1/6 #1  
S. 14

M.C. 11  
14

11  
19/M.C.

1/6 #2  
S. 14

10/11  
15/14

County Corner. 4" X 30" Serbed Maple Post set  
B.T's. 14" W. Pine 8" Maple down 3 W. Pine Stump  
N38°W 163 1/2 526°W. 129 1/2 335°E 33 1/2 9 1/2 E. of True Corner.

1/6 #3  
S. 14

County Corner 3" X 30" Oak Post  
B.T's. 10" Maple 10" W. Pine  
N59°W 90 1/2 N34°E 45 1/2

1/6 #4  
S. 14

1/6 #5  
S. 14

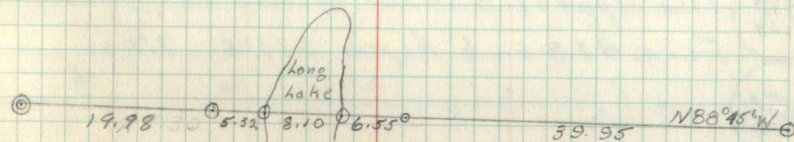
S.M.C.  
S. 14

1/6 #6  
S. 14

1/6 #7  
S. 14

1/4  
1973

1/6 #8  
S. 14



C 1/2  
S. 14



1/6 #9

5.14

1/4  
15/14 County Corner. 4" X 3' Scribed Spruce Post + 1/2" X 6" Iron Pipe  
B.T. 12" R. Oak S 33° E 561ks.

1/6 #10 County Corner. 3" X 3' Scribed Spruce Post + 1/2" X 6" Iron Pipe  
5.14 10" Balsam 6" B. Spruce  
B.T. S. N 21° E 131ks S 29° E 431ks

1/6 #11

5.14

1/6 #12

5.14

1/6 #13

5.14

1/6 #14

5.14

141/3  
23/24 F.S. Approx. 3" X 30" Squared Aspen Post  
Form 458 on 6" Aspen S 82° E 71ks.

1/6 #15

5.14

1/4  
23 F.S. Approx. 3" X 36" Squared Aspen Post.  
Form 458a on 8" Aspen S 75° W 121ks

M.E./19  
23 F.S. Approx. 2" X 36" Squared Aspen Post.

141  
23/M.C. F.S. Approx. 3" X 40" Squared Aspen Post.  
Form 458a on 6" Basswood S 57° E 61ks.

1/6 #16 F.S. Approx. 3" X 36" Squared Aspen Post.  
5.14 Form 458a on 10" Birch N 22° E 71ks

15/14  
22/23 County Corner. 3" X 30" Scribed Post 1/2" X 6" Iron Pipe  
B.Ts. 8" Maple 6" Maple 10" Maple  
N 85° E 391ks S 72° E 581ks S 76° W 221ks.

M.C.

M.C.

Long  
hole

A.D.

A.D.

2

2

A.D.

176

20



County Corner. 1/2" Iron Pipe flush with ground in road  
4" x 30" scribed Oak Post 5740 E 9 1/2 lks. from Pipe

5/11 #26  
10/12  
15/4

W. Pine 5" Stump 18" W. Pine 8" Maple (down)

B.T.s. 522° E 93 lks N92° W 163 lks 526° W 129 lks

M.C. 1/10 County Corner. 2" x 3' scribed Aspen Post. E.H.O. B.T.s. still  
15 18" W. Pine 29" W. Pine

B.T.s. 514° E 59 lks N9° W 96 lks readable in bottom blye

10/15 M.C.

MC 1/10  
15

16/15 M.C.

1/6 #3  
5.15

S.M.C.  
5.15

S.M.C. County Corner. 2" x 2' scribed Post + 1/2" x 3" Iron Pipe

5.15

14" W. Pine 20" W. Pine  
B.T.s. 575° E 38 lks N20° E 50 lks

1/6 #7 County Corner. For description look up

5.15

1/6 #3 S. 14

1/4  
15/14

County Corner. See section 14

S.M.C. County Corner. 2" x 2' scribed Post + 1/2" x 3" Iron Pipe

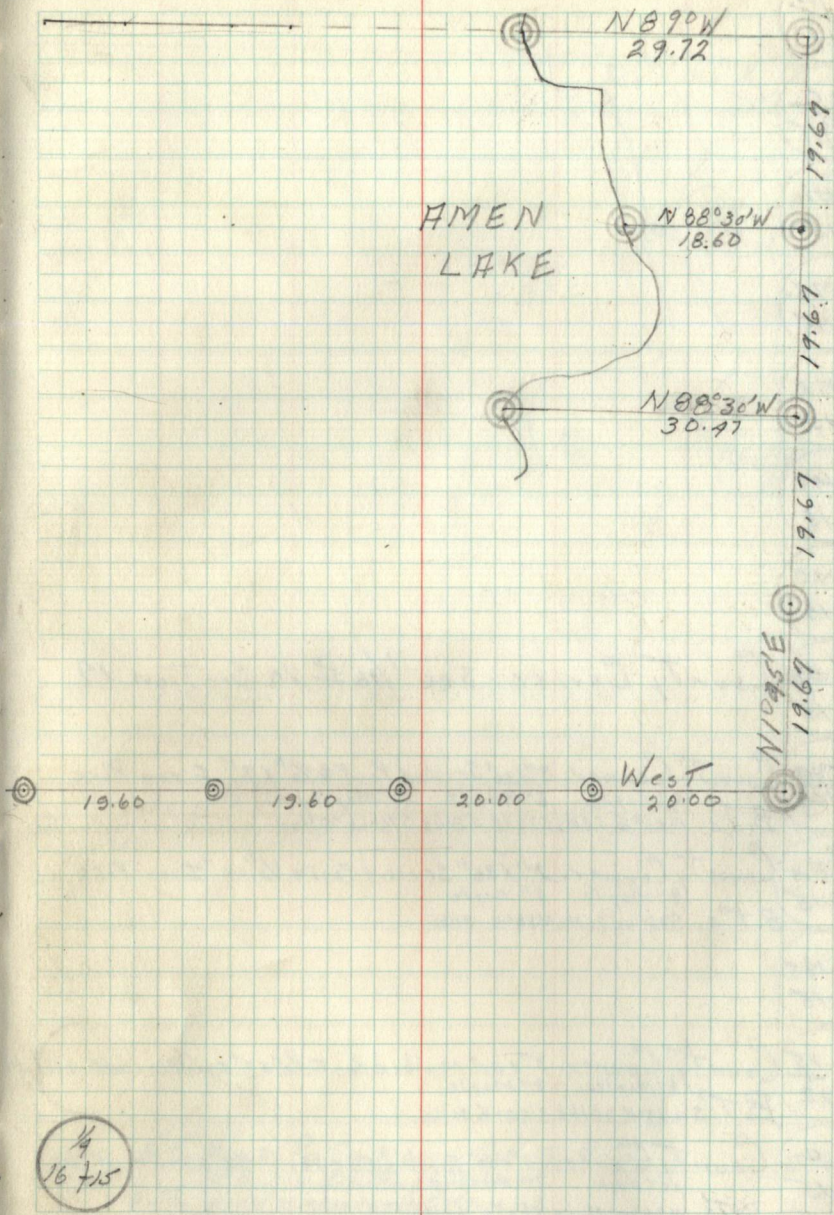
5.15

16" R. Pine 12" R. Pine  
B.T.s. N79° E 34 lks 566° E 27 lks

S.M.C.  
5.15

S.M.C.  
5.15

S.M.C.  
5.15





16/15  
M.C.

M.C.  
16/15

1/6 #10  
S.15.

S.M.C.  
S.15

S.M.C.  
S.15

S.M.C.  
S.15

S.M.C.  
S.15

1/6 #14 County Corner, see 1/6 #10 Section 19  
S.15

15/14 County Corner. 3" x 30" Scribed Post & 1/2" x 8" Iron Pipe  
22/23 8" Maple 6" Maple 10" Maple  
B.T.s. N35°E 39ks S72°E 58ks S76°W 22ks

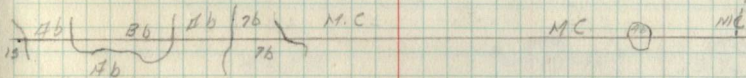
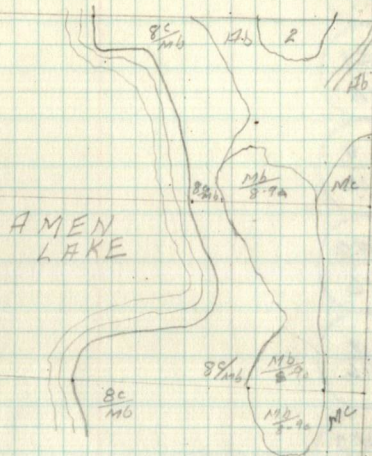
1/6 #15 County Corner. 2" x 36" Scribed Post & 1/2" x 9" Iron Pipe  
S.15 8" Maple 8" Maple  
B.T.s. S38°W 28ks N46°E 31ks

S.M.C.  
S.15

1/4 15 County Corner. 3" x 30" scribed Post. 1/2" x 9" Iron Pipe with elbow  
22 6" Maple 8" Maple  
B.T.s. N68°E 28ks S22°E 32ks

1/6 #16 County Corner. 3" x 40" Scribed Oak Post 1/2" x 5" Iron Pipe  
S.15 10" Oak 14" Sassafras  
B.T.s. N56°W 51ks N88°E 45ks

S.M.C.  
S.15



16/15 F.S. Approx. Post set from County B.T.s.  
21/22 B.T.s. 6" Dry Balsam Cedar Stump 6" Balsam  
N17°E 31ks W 81°W 12ks S30°E 60ks



50 corners

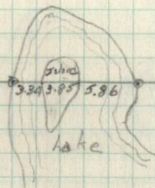
9/16 M.C.

1/16 #1  
S.16

1/4 9/16

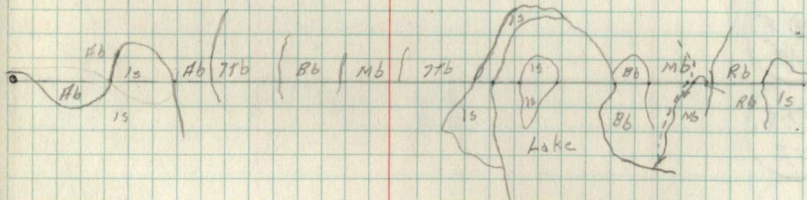
1/16 #2  
S.168/9  
17/161/16 #3  
S.161/16 #4  
S.161/16 #5  
S.161/16 #6  
S.161/16 #7  
S.161/4  
16/151/16 #8  
S.16C/4  
S.161/16 #9  
S.16

99.54

West  
19.701/4  
17/16



- 9 1/16 #10
- 16 5.16
- 1/16 #11
- 5 5.16
- 1/16 #12
- 5 5.16
- 1/16 #13
- 5 5.12
- 1/16 #14
- 5 5.12
- 16/15 F.S. Approx. Post set from County B.T.s.
- 21/22 6" Ry Balsam Cedar Stump 6" Balsam
- B.T.s. N67°E 361ks W81°W 157ks S30°E 607ks.
- M.C. 1/16
- 21
- S.M.C.
- 5.16
- 16/21 M.C.
- 1/16 16
- 21
- 1/16 #16
- 5.16
- 17/16 Local Corner 2" x 29" Tamarack Post badly rotted
- 20/21 Set new 2" x 26" Tamarack Post along side (Ch. Johnson 2/2/90)
- M.C.
- 16/15
- 16/15
- M.C.



M.C.  
16/15



8/9

17/16

1/6 #1

5.17

M.C. | B

17

B |

17/M.C.

1/6 #2

5.17

2/B

18/17

1/6 #3

5.17

1/6 #4

5.17

1/6 #5

5.17

S.M.C.

5.17

S.M.C.

5.17

1/6 #6

5.17

1/6 #7

5.17

4

17/16

Fawn  
Lake

West  
8000

1/6 #8  
5.17



C/A

5.17

1/6 #9

5.17

1/4

18/17

1/6 #10

5.17

1/6 #11

5.17

1/6 #12

5.17

1/6 #13

5.17

1/6 #14

5.17

12/16 Local Corner. 2"x24" Tamaraek posted badly rotted  
20/21 Set New 2"x36" Tamaraek along side. L.A. Johnson 2/7/90

1/6 #15

5.17

1/4 17

20

1/6 #16

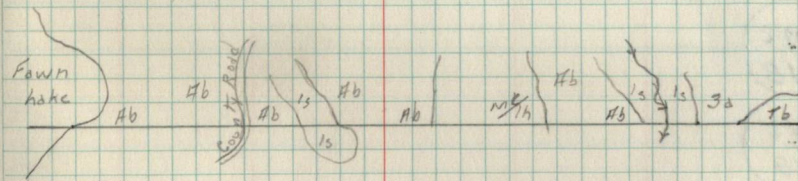
5.17

M.C. 17 F.S. Approx. Post set from County B.T.

20 B.T. 6" Dry Ash N. 78° E. 33 lbs.

18/17

M.C.





218  
18/17

M.C. 7  
18

71  
18/M.C.

12/7  
13/18

1/6 #3  
S.18

13/18  
M.C.

1/6 #4  
S.18

1/6 #5  
S.18

S.M.C.  
S.18

1/6 #6  
S.18

S.M.C.  
S.18

1/6 #7  
S.18

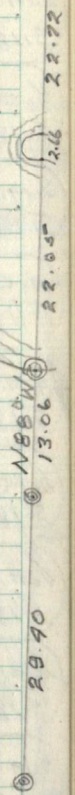
1/4  
18+17

S.M.C.  
S.18

S.M.C.  
S.18

S.M.C.  
S.18

Fawn Lake





S.M.C.

5.18

S.M.C.

5.18

1/6 #9

5.18

S.M.C.

5.18

M.C.

13/18

A.M.C.

5.18

LoT. Cor.

5.18

1/6 #11

5.18

1/6 #12

5.18

S.M.C.

5.18

1/6 #19

5.18

18/17

M.C.

18/17 M.C. County Cor. 2" x 36" Ash Post. Set by A. Johnson

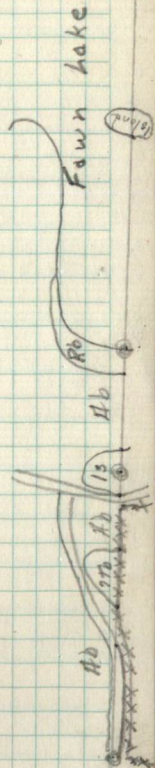
5" Ash 8" Ash

B.T.'s S52°W 89/ks N66°W 21/ks 2/8/40 From B.T.'s.

1/6 #16 County Corner. 9" x 90" Scribed Post.

5.18 B.T.'s W. Pine 6' 10" W. Pine (dry) 18" W. Pine (dry) 18"

N90°W 120/ks S52°E 161/ks



LoT. Cor.

5.18

13/18

27/19

County Corner 5" x 30" Scribed Witness Post

B. T. N. Birch (dry) S38°E 89/ks.



lineal Survey Records

T57N R25W



559N R25W

County Corner 1" X 8" Iron Pipe

1

B.T's

W. Pine Stump W. Pine Stump  
N89°0E 84kx S87°0E 39kx

1/16 #1

S.1

1/4 36  
1

1/16 #2

S.1

559N R25W  
39362  
271

G.h. O. 2" X 3' scribed Tamrock Post

559N R25W

B.T. 8" Tam. Stub N66°E 20kx.

1/16 #3

S.1

1/16 #4

S.1

1/16 #5

S.1

1/16 #6

S.1

1/16 #7

S.1

1/4

County Corner 1" X 24" Iron Pipe

176

No B.T's 2" X 30" Aspen Post

1/16 #8

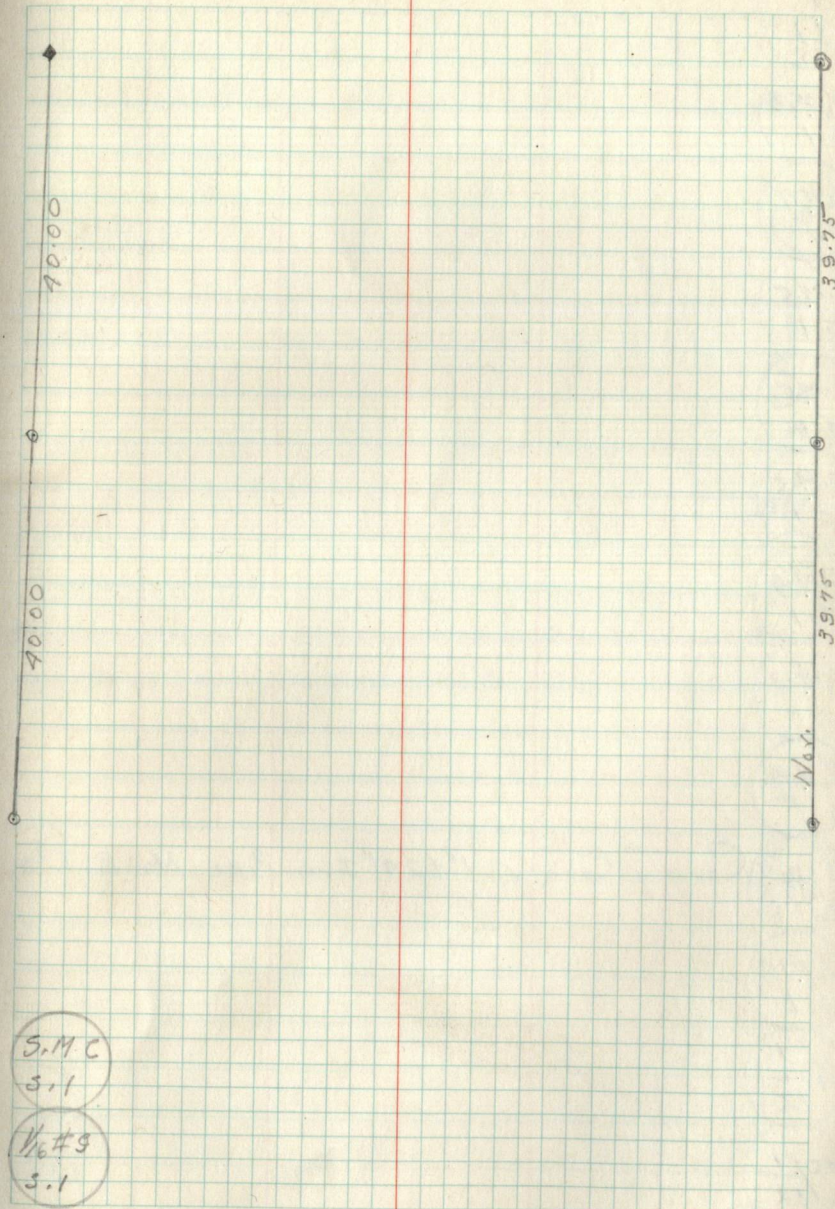
S.1

S.M.C.

S.1

S.M.C.

S.1





$\frac{1}{4}$   
2+1

$\frac{1}{6}$  #10  
S.1

$\frac{1}{6}$  #11  
S.1

S.M.C.  
S.1

S.M.C.  
S.1

S.M.C.  
S.1

S.M.C.  
S.1

$\frac{1}{6}$  #13  
S.1

$\frac{1}{6}$  #14  
S.1

$\frac{1}{6}$  #15  
S.1

$\frac{1}{4}$   $\frac{1}{12}$

M.C.  $\frac{1}{12}$

$\frac{1}{12}$  M.C.

County Corner, 1" x 29" Iron Pipe No B.T's.

Ab

Ab

Flange

Ab

Ab 2

Ab

Ab

Ab

TSYNR22M  
21  
11/12



Pages 002 - 010  
are blank



TSNR254  
3/11  
11/12

MC 3/11

3/11 MC

1/4 3/11

1/6 #2  
S. 11

3/2  
10/11

1/6 #3  
S. 11

1/6 #4  
S. 11

1/6 #5  
S. 11

1/6 #6  
S. 11

1/6 #7  
S. 11

1/4 WC  
11/12

1/6 #8  
S. 11

e 1/4  
S. 11



1/6 #9

5.11

1/4

10/11

1/6 #10

5.11

1/6 #11

5.11

1/6 #12

5.11

1/6 #13

5.11

1/6 #14

5.11

1/12

14/13

1/6 #15

0.11

1/9

11/14

1/6 #16

2.11

10/11

15/14

M.C.

11/12

F.S. Approx. 2" x 30" Cherry Post set from old B.T.

B.T. 12" Dry W. Pine S 95° W 15 lbs.

11/12

M.C.

F.S. Approx Post. 2" x 30" Tam. Post set from old B.T.

B.T. 8" Dry W. Pine N 17° W 16 lbs.

Post set 12/4/39  
by A. Johnson



116  
1217

County Corner.

1" x 24" Iron Pipe

No B.T.'s.

1/6 #1

5.12

1/4 +  
12

M.C. 1/2

1/12 M.C.

2/11  
11/12

11/12 G.h.O. Approx. 2" x 30" Tam. Post Set from B.T.

M.C. B.T. 8" Dead White Pine N 170 W 16 1/2

M.C. G.h.O. B.T. 12" Dry W. Pine (Post Set by A. Johnson from B.T. 1219/139)

11/12 Approx. 2" x 30" Cherry Post N 59° E 15 1/2 k.s. of B.T.

1/6 #3

5.12

1/6 #4

5.12

S.M.C.

5.12

1/6 #5

5.12

1/6 #6

5.12

S.M.C.

5.12

S.M.C.

5.12

1/6 #7

5.12

1/4

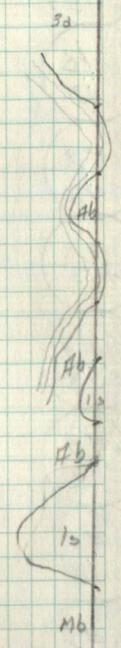
12 + 7

80.34

NO. 39E



- S.M.C.
- S.12
- S.M.C.
- S.12
- 1/6 #8
- S.12
- C/A
- S.12
- 1/6 #9
- S.12
- 1/4
- 11/12
- 1/6 #10
- S.12
- 1/6 #11
- S.12
- 1/6 #12
- S.12
- 1/6 #13
- S.12
- S.M.C.
- S.12
- S.M.C.
- S.12
- 1/6 #14
- S.12



- 1/6 #15
- S.12
- 1/4 12
- 13
- 1/6 #16
- S.12
- 11/12
- 14/13

12/17 County Corner. No Post as it falls in road.  
 13/18 B.T's. 19" R. Pine 19" R. Pine 19" R. Pine  
 5120W N50°W N30°W  
 291k5 1981k5 1251k5



12/17 County Corner. Root location in E of Road  
13/18 14" R. Pine 19" R. Pine 19" R. Pine  
B.T's 3.20W 721ks N54°W 1481k N30°W 1257ks

1/6 #1  
5.13

1/4 12  
13

1/6 #2  
5.13

11/12  
14/13

1/6 #3  
5.13

1/6 #4  
5.13

1/6 #5  
5.13

1/6 #6  
5.13

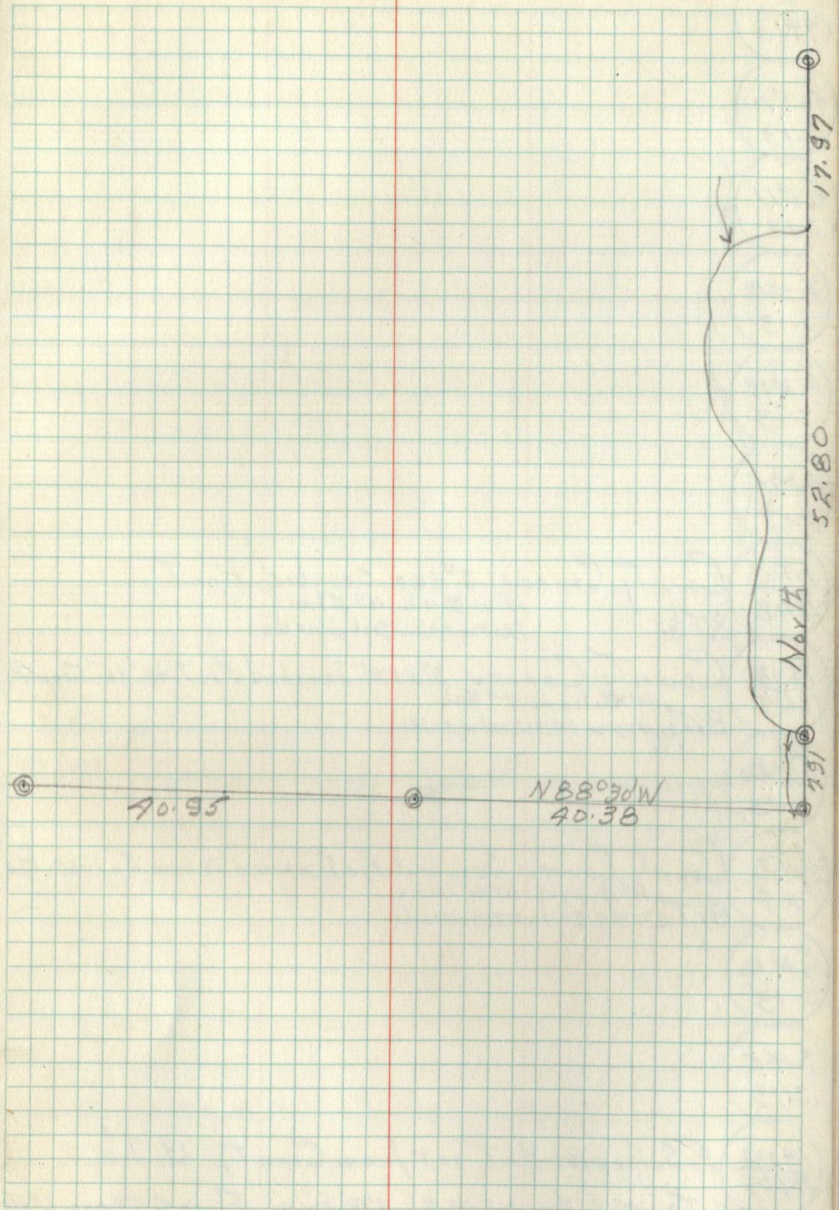
13/18  
M.C.

5, M.C.  
5.13

1/6 #8  
5.13

C/4  
5.13

1/6 #9  
5.13





1/4  
19713

1/6 #10  
S.13

1/6 #11  
S.13

1/6 #12  
S.13

1/6 #13  
S.13

S.M.C.  
S.13

M.C. County Corner 3" X 20" Scribed Post  
13/18 B.T's. 17" W. Birch 10" Elm  
S85°W 79 lks S10°W 117 lks

13/18 County Corner 3" X 13" Scribed Post & 1" X 6" Iron Pipe  
12/19 10" Balsam 7" Ash  
B.T's. N80°W 79 lks S10°W 33 lks

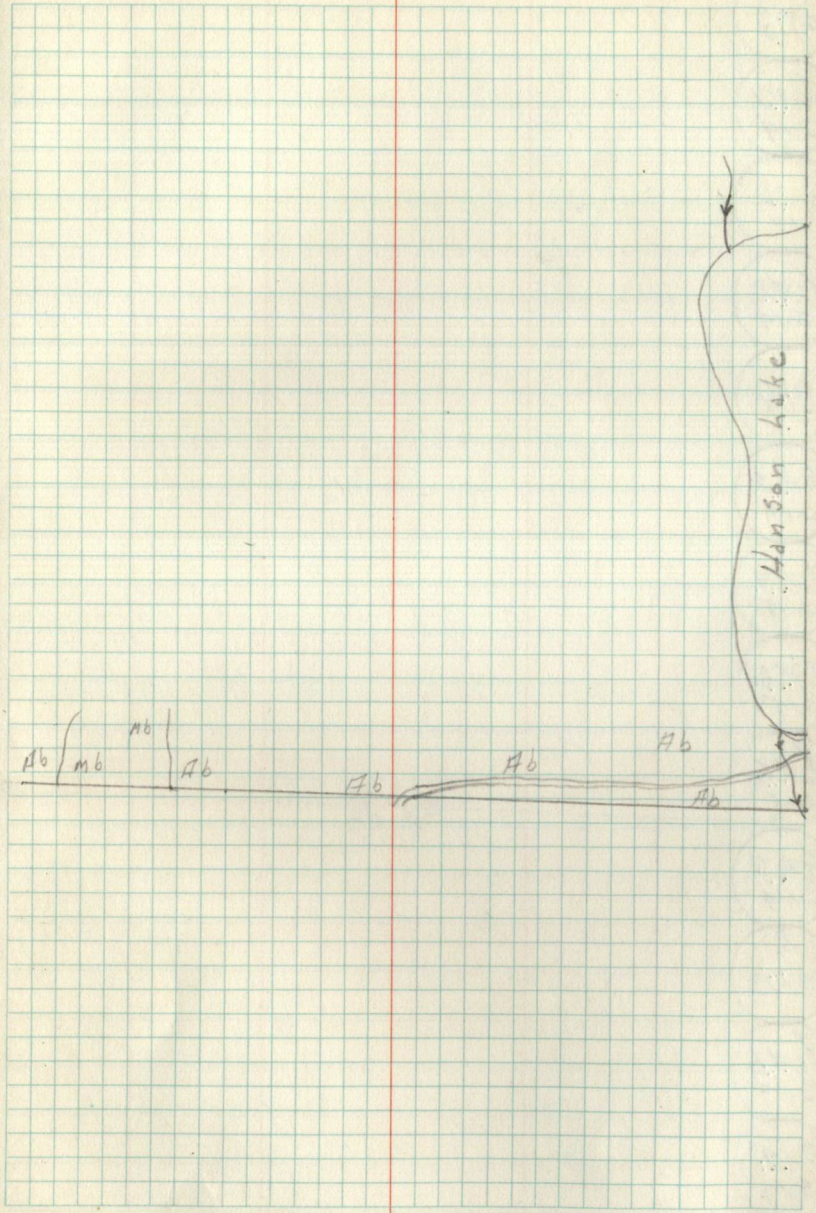
1/6 #15  
S.13

1/4 13 County Corner Scribed Post nailed to new Approx. Post.  
29 11" Aspen 16" W. Spruce  
B.T's. S56°E 89 lks N75°W 176 lks

1/6 #16  
S.13

S.M.C.  
S.13

19/13 F.S. Approx. Post set from County B.T's.  
23/29 B.T's. 14" R. Pine 10" Oak 8" R. Pine Form 958 on 6" Aspen  
S.16°E 210 lks S95°E 182 lks S85°W 103 lks  
N47°W 39 lks.





11/12  
19/13

1/6 #1  
5.14

1/4 11  
14

1/6 #2  
5.14

10/11  
15/14

1/6 #3  
5.14

1/6 #4  
5.14

1/6 #5  
5.14

1/6 #6  
5.14

1/6 #7  
5.14

1/4  
19+13

1/6 #8  
5.14

c 1/4  
5.14

② ————— 1188<sup>00</sup>W ————— ③  
80.35



1/6#9  
5.14

1/4  
15+19

1/6#10  
5.14

1/6#11  
5.14

1/6#12  
5.14

1/6#13  
5.14

1/6#14  
5.14

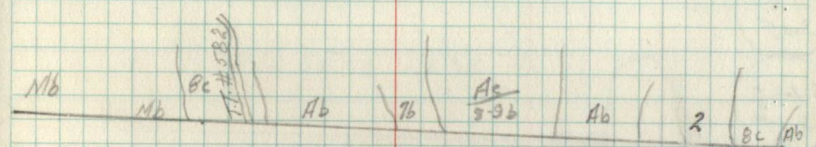
1413 F. S. Approx. Post set from County B. T's.  
23129 14" R. Pine 10" Oak 8" R. Pine Form 4582 on  
B. T's. S16°E 210ks S45°E 182ks S85°W 103ks 6" Aspen N47°W 341ks.

1/6#15  
5.14

1/4  
23

1/6#16  
5.14

1514 County Corner. 3" x 36" scribed Post + 3/4" x 3" Iron Pipe  
22123 6" R. Pine 6" R. Pine 8" R. Pine Aspen Stump  
B. T's. South 11ks East 21ks N61°E 30ks N72°W 151ks





10/11

15/14

1/6 #1

5.15

1/4 10  
15

1/6 #2

5.15

9/10

16/15

16/15

M.C.

S.M.C.

5.15

S.M.C.

5.15

S.M.C.

5.15

S.M.C.

5.15

S.M.C.

5.15

1/6 #6

5.15

1/6 #7

5.15

Wabana Lake

53.21

1.41

9.00

9.75



1/4

15/19

1/6 #8

5.15

S.M.C.

5.15

S.M.C.

5.15

S.M.C.

5.15

S.M.C.

5.15

1/6 #13

5.15

1/6 #14

5.15

15/19

22/23

County Corner 3" x 36" scribed Post & 3/4" x 3" Iron Pipe  
6" R. Pine 6" R. Pine 8" R. Pine Aspen Stump  
B.T.s. South 11ks East 2ks N61°E 30ks N97°W 15ks.

M.C. 15

22

County Corner 3" x 30" scribed Post  
Original B.T. 6" Dry Cedar N75°E 8ks.

15

22 M.C.

1/6 #15

5.15

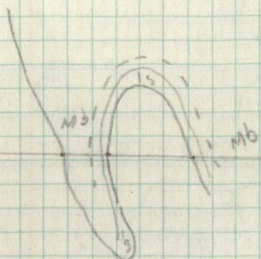
County Corner 2" x 36" scribed Post & 3/4" x 1/2" Iron Pipe  
12" Cedar 8" Cedar  
B.T.s. N36°E 64ks N18°W 119ks

M.C. 15

22

County Corner 3" x 36" scribed Post & 5 sided Iron Pipe 1/2" x 1/2"  
6" W. Birch 10" W. Spruce  
B.T.s. N18°E 51ks S99°E 126ks

Wobana lake





13  
K57N 925M  
9/10  
16/15

5  
5  
M.C. 9  
16

5  
5  
9  
16 M.C.

5  
5  
819  
1716

5  
5  
1/6 #3  
5.16

5  
5  
S.M.C.  
5.16

5  
5  
16/15  
M.C.

5  
5  
1/2  
16/17

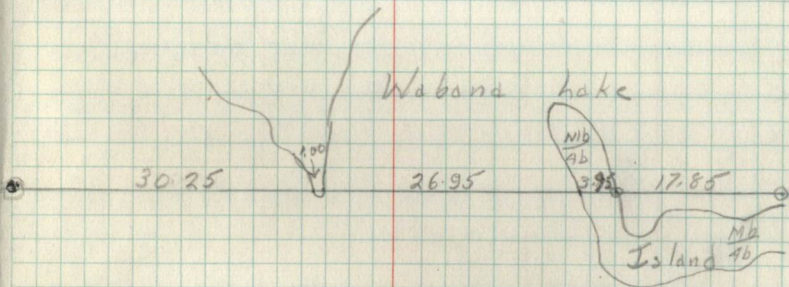
5  
5  
1/6 #10  
5.16

5  
5  
17/16  
M.C.

5  
5  
1/6 #11  
5.16

5  
5  
S.M.C.  
5.16

5  
5  
S.M.C.  
5.16





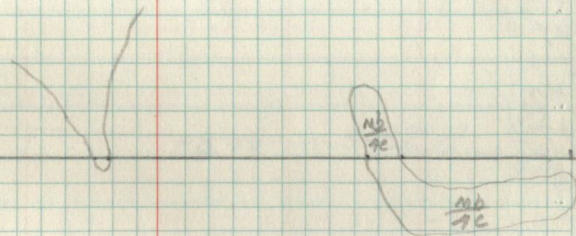
16/21 MC

MC/16  
21

16/21 MC

MC/16  
21

S.M.C  
5/16





597 R 254  
818  
1716

1/6 #1  
5.17

81  
17 M.C.

M.C.B.  
17

718  
181.7

18/17  
M.C.

S.M.C.  
5.17

1/6 #6  
5.17

1/6 #7  
5.17

1/2  
1716

1/6 #8  
3.17

C/A N.C.  
5.17

M.C.  
18/17

Blue Water  
Lake

15.08

58.35

N87°W

Wabano  
Lake  
7.90



18/17  
M.C.

5.17  
5.17

1/6 #12  
5.17

1/6 #13  
5.17

1/6 #14  
5.17

17/16  
M.C.

17/20 M.C. F.S. Approx. Cor. 2" x 36" Cedar Post

1/6 #15  
5.17

1/9 17  
20

M.C. 17/20 G.H. O. Corner. 3" x 30" Scribed Post  
B.T.S. 8" R. Pine stub 6" Aspen stub  
2930E 191ks N170W 191ks





5371A32  
218  
18/17

1/6 #1  
5118

1/4 7  
18

1/6 #2  
5.18

12/7  
13/18

13/18  
M.C.

S.M.C.  
5.18

S.M.C.  
5.18

1/6 #5  
5.18

1/6 #6  
5.18

1/6 #7  
5.18

M.C.  
18/17

S.M.C.  
5.18

1/6 #8  
5.18



C/A  
5.18

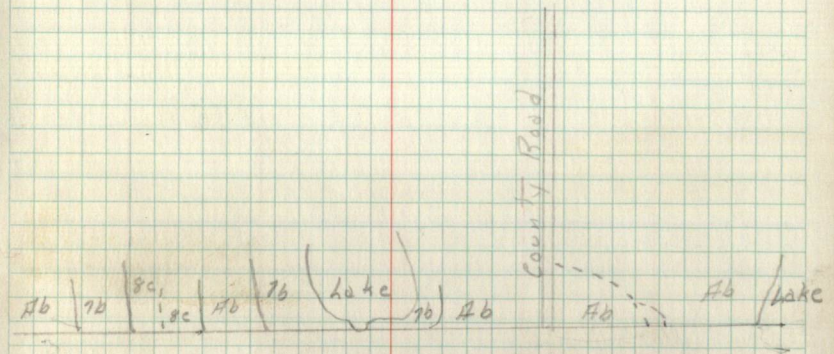


- 1/6 #9  
S.18
- S.M.C.  
S.18
- S.M.C.  
S.18
- M.C.  
13/18
- 1/6 #10  
S.18
- 1/6 #11  
S.18
- 1/6 #13  
S.18
- 1/6 #14  
S.18
- M.C.  
18/17
- 1/6 #12  
S.18
- 18/17  
M.C.
- 1/6 #15  
S.18
- 1/6 #16  
S.18
- 13/18  
14/19
- 1/6 #19  
S.18

18/17 County Corner 3" x 3" scribed Post & 3/4" x 6" I.P.  
 19/M.C. 12" Aspen 8" Cedar  
 B.T.S. S79°W 26 lks N79°W 49 lks

1/6 #15 County Corner 3" x 3" scribed Post & 1" x 8" Iron Pipe.  
 5.18 8" Aspen 8" Aspen  
 B.T.S. S69°W 51 lks N17°W 58 lks

1/6 #19 County Corner 3/4" x 1" Iron Pipe & Approx Post  
 10" R. Pine 14" R. Pine  
 B.T.S. S6°W 279 lks S1°E 276 lks



1/6 #16 County Corner 2" x 3" scribed Post & 3/4" x 8" Iron Pipe  
 5.18 8" Aspen 12" Aspen  
 B.T.S. N16°W 38 lks S9°W 38 lks

13/18 County Corner 4" x 3" scribed Post & 1" x 6" Iron Pipe  
 14/19 8" R. Pine 14" Aspen 8" Oak  
 B.T.S. S32°W 107 lks S59°E 179 lks N16°E 45 lks



Pages 019-End  
are blank