

OLD COPY

T148NR26W

MINE
TRANSFER BOOK

CCC 35

TABLES FOR EXCAVATIONS AND EMBANKMENTS.

DISTANCES FROM CENTER OF ROADWAY FOR CROSS-SECTIONING
ROADWAY 18 FEET WIDE. SIDE SLOPES 1 TO 1.
FOR SINGLE TRACK EXCAVATION.

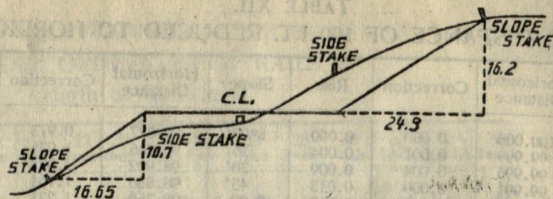
| | 0 | .1 | .2 | .3 | .4 | .5 | .6 | .7 | .8 | .9 | |
|----|------|------|------|------|------|------|------|------|------|------|----|
| 0 | 9.0 | 9.1 | 9.2 | 9.3 | 9.4 | 9.5 | 9.6 | 9.7 | 9.8 | 9.9 | 0 |
| 1 | 10.0 | 10.1 | 10.2 | 10.3 | 10.4 | 10.5 | 10.6 | 10.7 | 10.8 | 10.9 | 1 |
| 2 | 11.0 | 11.1 | 11.2 | 11.3 | 11.4 | 11.5 | 11.6 | 11.7 | 11.8 | 11.9 | 2 |
| 3 | 12.0 | 12.1 | 12.2 | 12.3 | 12.4 | 12.5 | 12.6 | 12.7 | 12.8 | 12.9 | 3 |
| 4 | 13.0 | 13.1 | 13.2 | 13.3 | 13.4 | 13.5 | 13.6 | 13.7 | 13.8 | 13.9 | 4 |
| 5 | 14.0 | 14.1 | 14.2 | 14.3 | 14.4 | 14.5 | 14.6 | 14.7 | 14.8 | 14.9 | 5 |
| 6 | 15.0 | 15.1 | 15.2 | 15.3 | 15.4 | 15.5 | 15.6 | 15.7 | 15.8 | 15.9 | 6 |
| 7 | 16.0 | 16.1 | 16.2 | 16.3 | 16.4 | 16.5 | 16.6 | 16.7 | 16.8 | 16.9 | 7 |
| 8 | 17.0 | 17.1 | 17.2 | 17.3 | 17.4 | 17.5 | 17.6 | 17.7 | 17.8 | 17.9 | 8 |
| 9 | 18.0 | 18.1 | 18.2 | 18.3 | 18.4 | 18.5 | 18.6 | 18.7 | 18.8 | 18.9 | 9 |
| 10 | 19.0 | 19.1 | 19.2 | 19.3 | 19.4 | 19.5 | 19.6 | 19.7 | 19.8 | 19.9 | 10 |
| 11 | 20.0 | 20.1 | 20.2 | 20.3 | 20.4 | 20.5 | 20.6 | 20.7 | 20.8 | 20.9 | 11 |
| 12 | 21.0 | 21.1 | 21.2 | 21.3 | 21.4 | 21.5 | 21.6 | 21.7 | 21.8 | 21.9 | 12 |
| 13 | 22.0 | 22.1 | 22.2 | 22.3 | 22.4 | 22.5 | 22.6 | 22.7 | 22.8 | 22.9 | 13 |
| 14 | 23.0 | 23.1 | 23.2 | 23.3 | 23.4 | 23.5 | 23.6 | 23.7 | 23.8 | 23.9 | 14 |
| 15 | 24.0 | 24.1 | 24.2 | 24.3 | 24.4 | 24.5 | 24.6 | 24.7 | 24.8 | 24.9 | 15 |
| 16 | 25.0 | 25.1 | 25.2 | 25.3 | 25.4 | 25.5 | 25.6 | 25.7 | 25.8 | 25.9 | 16 |
| 17 | 26.0 | 26.1 | 26.2 | 26.3 | 26.4 | 26.5 | 26.6 | 26.7 | 26.8 | 26.9 | 17 |
| 18 | 27.0 | 27.1 | 27.2 | 27.3 | 27.4 | 27.5 | 27.6 | 27.7 | 27.8 | 27.9 | 18 |
| 19 | 28.0 | 28.1 | 28.2 | 28.3 | 28.4 | 28.5 | 28.6 | 28.7 | 28.8 | 28.9 | 19 |
| 20 | 29.0 | 29.1 | 29.2 | 29.3 | 29.4 | 29.5 | 29.6 | 29.7 | 29.8 | 29.9 | 20 |
| 21 | 30.0 | 30.1 | 30.2 | 30.3 | 30.4 | 30.5 | 30.6 | 30.7 | 30.8 | 30.9 | 21 |
| 22 | 31.0 | 31.1 | 31.2 | 31.3 | 31.4 | 31.5 | 31.6 | 31.7 | 31.8 | 31.9 | 22 |
| 23 | 32.0 | 32.1 | 32.2 | 32.3 | 32.4 | 32.5 | 32.6 | 32.7 | 32.8 | 32.9 | 23 |
| 24 | 33.0 | 33.1 | 33.2 | 33.3 | 33.4 | 33.5 | 33.6 | 33.7 | 33.8 | 33.9 | 24 |
| 25 | 34.0 | 34.1 | 34.2 | 34.3 | 34.4 | 34.5 | 34.6 | 34.7 | 34.8 | 34.9 | 25 |
| 26 | 35.0 | 35.1 | 35.2 | 35.3 | 35.4 | 35.5 | 35.6 | 35.7 | 35.8 | 35.9 | 26 |
| 27 | 36.0 | 36.1 | 36.2 | 36.3 | 36.4 | 36.5 | 36.6 | 36.7 | 36.8 | 36.9 | 27 |
| 28 | 37.0 | 37.1 | 37.2 | 37.3 | 37.4 | 37.5 | 37.6 | 37.7 | 37.8 | 37.9 | 28 |
| 29 | 38.0 | 38.1 | 38.2 | 38.3 | 38.4 | 38.5 | 38.6 | 38.7 | 38.8 | 38.9 | 29 |
| 30 | 39.0 | 39.1 | 39.2 | 39.3 | 39.4 | 39.5 | 39.6 | 39.7 | 39.8 | 39.9 | 30 |
| 31 | 40.0 | 40.1 | 40.2 | 40.3 | 40.4 | 40.5 | 40.6 | 40.7 | 40.8 | 40.9 | 31 |
| 32 | 41.0 | 41.1 | 41.2 | 41.3 | 41.4 | 41.5 | 41.6 | 41.7 | 41.8 | 41.9 | 32 |
| 33 | 42.0 | 42.1 | 42.2 | 42.3 | 42.4 | 42.5 | 42.6 | 42.7 | 42.8 | 42.9 | 33 |
| 34 | 43.0 | 43.1 | 43.2 | 43.3 | 43.4 | 43.5 | 43.6 | 43.7 | 43.8 | 43.9 | 34 |
| 35 | 44.0 | 44.1 | 44.2 | 44.3 | 44.4 | 44.5 | 44.6 | 44.7 | 44.8 | 44.9 | 35 |
| 36 | 45.0 | 45.1 | 45.2 | 45.3 | 45.4 | 45.5 | 45.6 | 45.7 | 45.8 | 45.9 | 36 |

Table of Departure Corrections

| Distance | 15' | 30' | 45' | 1.00 | 1.15' | 1.30' | 1.45' | 2.00 |
|----------|-------|-------|-------|-------|-------|-------|-------|-------|
| | Error | Error | Error | Error | Error | Error | Error | Error |
| 1 chain | — | — | .015 | .017 | .021 | .026 | .030 | .034 |
| 20 " | .088 | .18 | .26 | .35 | .44 | .52 | .61 | .70 |
| 40 " | .18 | .35 | .52 | .70 | .87 | 1.05 | 1.22 | 1.40 |
| 60 " | .26 | .52 | .79 | 1.05 | 1.31 | 1.57 | 1.83 | 2.10 |
| 80 " | .35 | .70 | 1.05 | 1.40 | 1.79 | 2.10 | 2.44 | 2.80 |

148-26
Scanned
9/7/2012

Ranney



DISTANCES FROM SIDE STAKES FOR CROSS-SECTIONING.

SLOPE 1 1/2 TO 1. ROADWAY OF ANY WIDTH.

| | 0 | .1 | .2 | .3 | .4 | .5 | .6 | .7 | .8 | .9 | |
|----|-------|-------|-------|-------|-------|-------|-------|-------|-------|-------|----|
| 0 | 0.00 | 0.15 | 0.30 | 0.45 | 0.60 | 0.75 | 0.90 | 1.05 | 1.20 | 1.35 | 0 |
| 1 | 1.50 | 1.65 | 1.80 | 1.95 | 2.10 | 2.25 | 2.40 | 2.55 | 2.70 | 2.85 | 1 |
| 2 | 3.00 | 3.15 | 3.30 | 3.45 | 3.60 | 3.75 | 3.90 | 4.05 | 4.20 | 4.35 | 2 |
| 3 | 4.50 | 4.65 | 4.80 | 4.95 | 5.10 | 5.25 | 5.40 | 5.55 | 5.70 | 5.85 | 3 |
| 4 | 6.00 | 6.15 | 6.30 | 6.45 | 6.60 | 6.75 | 6.90 | 7.05 | 7.20 | 7.35 | 4 |
| 5 | 7.50 | 7.65 | 7.80 | 7.95 | 8.10 | 8.25 | 8.40 | 8.55 | 8.70 | 8.85 | 5 |
| 6 | 9.00 | 9.15 | 9.30 | 9.45 | 9.60 | 9.75 | 9.90 | 10.05 | 10.20 | 10.35 | 6 |
| 7 | 10.50 | 10.65 | 10.80 | 10.95 | 11.10 | 11.25 | 11.40 | 11.55 | 11.70 | 11.85 | 7 |
| 8 | 12.00 | 12.15 | 12.30 | 12.45 | 12.60 | 12.75 | 12.90 | 13.05 | 13.20 | 13.35 | 8 |
| 9 | 13.50 | 13.65 | 13.80 | 13.95 | 14.10 | 14.25 | 14.40 | 14.55 | 14.70 | 14.85 | 9 |
| 10 | 15.00 | 15.15 | 15.30 | 15.45 | 15.60 | 15.75 | 15.90 | 16.05 | 16.20 | 16.35 | 10 |
| 11 | 16.50 | 16.65 | 16.80 | 16.95 | 17.10 | 17.25 | 17.40 | 17.55 | 17.70 | 17.85 | 11 |
| 12 | 18.00 | 18.15 | 18.30 | 18.45 | 18.60 | 18.75 | 18.90 | 19.05 | 19.20 | 19.35 | 12 |
| 13 | 19.50 | 19.65 | 19.80 | 19.95 | 20.10 | 20.25 | 20.40 | 20.55 | 20.70 | 20.85 | 13 |
| 14 | 21.00 | 21.15 | 21.30 | 21.45 | 21.60 | 21.75 | 21.90 | 22.05 | 22.20 | 22.35 | 14 |
| 15 | 22.50 | 22.65 | 22.80 | 22.95 | 23.10 | 23.25 | 23.40 | 23.55 | 23.70 | 23.85 | 15 |
| 16 | 24.00 | 24.15 | 24.30 | 24.45 | 24.60 | 24.75 | 24.90 | 25.05 | 25.20 | 25.35 | 16 |
| 17 | 25.50 | 25.65 | 25.80 | 25.95 | 26.10 | 26.25 | 26.40 | 26.55 | 26.70 | 26.85 | 17 |
| 18 | 27.00 | 27.15 | 27.30 | 27.45 | 27.60 | 27.75 | 27.90 | 28.05 | 28.20 | 28.35 | 18 |
| 19 | 28.50 | 28.65 | 28.80 | 28.95 | 29.10 | 29.25 | 29.40 | 29.55 | 29.70 | 29.85 | 19 |
| 20 | 30.00 | 30.15 | 30.30 | 30.45 | 30.60 | 30.75 | 30.90 | 31.05 | 31.20 | 31.35 | 20 |
| 21 | 31.50 | 31.65 | 31.80 | 31.95 | 32.10 | 32.25 | 32.40 | 32.55 | 32.70 | 32.85 | 21 |
| 22 | 33.00 | 33.15 | 33.30 | 33.45 | 33.60 | 33.75 | 33.90 | 34.05 | 34.20 | 34.35 | 22 |
| 23 | 34.50 | 34.65 | 34.80 | 34.95 | 35.10 | 35.25 | 35.40 | 35.55 | 35.70 | 35.85 | 23 |
| 24 | 36.00 | 36.15 | 36.30 | 36.45 | 36.60 | 36.75 | 36.90 | 37.05 | 37.20 | 37.35 | 24 |
| 25 | 37.50 | 37.65 | 37.80 | 37.95 | 38.10 | 38.25 | 38.40 | 38.55 | 38.70 | 38.85 | 25 |
| 26 | 39.00 | 39.15 | 39.30 | 39.45 | 39.60 | 39.75 | 39.90 | 40.05 | 40.20 | 40.35 | 26 |
| 27 | 40.50 | 40.65 | 40.80 | 40.95 | 41.10 | 41.25 | 41.40 | 41.55 | 41.70 | 41.85 | 27 |
| 28 | 42.00 | 42.15 | 42.30 | 42.45 | 42.60 | 42.75 | 42.90 | 43.05 | 43.20 | 43.35 | 28 |
| 29 | 43.50 | 43.65 | 43.80 | 43.95 | 44.10 | 44.25 | 44.40 | 44.55 | 44.70 | 44.85 | 29 |
| 30 | 45.00 | 45.15 | 45.30 | 45.45 | 45.60 | 45.75 | 45.90 | 46.05 | 46.20 | 46.35 | 30 |
| 31 | 46.50 | 46.65 | 46.80 | 46.95 | 47.10 | 47.25 | 47.40 | 47.55 | 47.70 | 47.85 | 31 |
| 32 | 48.00 | 48.15 | 48.30 | 48.45 | 48.60 | 48.75 | 48.90 | 49.05 | 49.20 | 49.35 | 32 |
| 33 | 49.50 | 49.65 | 49.80 | 49.95 | 50.10 | 50.25 | 50.40 | 50.55 | 50.70 | 50.85 | 33 |
| 34 | 51.00 | 51.15 | 51.30 | 51.45 | 51.60 | 51.75 | 51.90 | 52.05 | 52.20 | 52.35 | 34 |
| 35 | 52.50 | 52.65 | 52.80 | 52.95 | 53.10 | 53.25 | 53.40 | 53.55 | 53.70 | 53.85 | 35 |
| 36 | 54.00 | 54.15 | 54.30 | 54.45 | 54.60 | 54.75 | 54.90 | 55.05 | 55.20 | 55.35 | 36 |
| 37 | 55.50 | 55.65 | 55.80 | 55.95 | 56.10 | 56.25 | 56.40 | 56.55 | 56.70 | 56.85 | 37 |
| 38 | 57.00 | 57.15 | 57.30 | 57.45 | 57.60 | 57.75 | 57.90 | 58.05 | 58.20 | 58.35 | 38 |
| 39 | 58.50 | 58.65 | 58.80 | 58.95 | 59.10 | 59.25 | 59.40 | 59.55 | 59.70 | 59.85 | 39 |
| 40 | 60.00 | 60.15 | 60.30 | 60.45 | 60.60 | 60.75 | 60.90 | 61.05 | 61.20 | 61.35 | 40 |
| 41 | 61.50 | 61.65 | 61.80 | 61.95 | 62.10 | 62.25 | 62.40 | 62.55 | 62.70 | 62.85 | 41 |
| 42 | 63.00 | 63.15 | 63.30 | 63.45 | 63.60 | 63.75 | 63.90 | 64.05 | 64.20 | 64.35 | 42 |
| 43 | 64.50 | 64.65 | 64.80 | 64.95 | 65.10 | 65.25 | 65.40 | 65.55 | 65.70 | 65.85 | 43 |
| 44 | 66.00 | 66.15 | 66.30 | 66.45 | 66.60 | 66.75 | 66.90 | 67.05 | 67.20 | 67.35 | 44 |
| 45 | 67.50 | 67.65 | 67.80 | 67.95 | 68.10 | 68.25 | 68.40 | 68.55 | 68.70 | 68.85 | 45 |
| 46 | 69.00 | 69.15 | 69.30 | 69.45 | 69.60 | 69.75 | 69.90 | 70.05 | 70.20 | 70.35 | 46 |
| 47 | 70.50 | 70.65 | 70.80 | 70.95 | 71.10 | 71.25 | 71.40 | 71.55 | 71.70 | 71.85 | 47 |
| 48 | 72.00 | 72.15 | 72.30 | 72.45 | 72.60 | 72.75 | 72.90 | 73.05 | 73.20 | 73.35 | 48 |
| 49 | 73.50 | 73.65 | 73.80 | 73.95 | 74.10 | 74.25 | 74.40 | 74.55 | 74.70 | 74.85 | 49 |
| 50 | 75.00 | 75.15 | 75.30 | 75.45 | 75.60 | 75.75 | 75.90 | 76.05 | 76.20 | 76.35 | 50 |

T 148 N - R 26 W 5th Mer
Original G.L.O. Survey by B.C. Baldwin

1875

Var. - 10° 30'

Legend

- ◆ G.L.O. Corner positively identified
- ◇ Probably a G.L.O. Corner
- F.S. Corner
- ⊙ County Corner
- ◇ Corner set in original survey
- ✕ Corner in Lake

Legend For Type Map:

- | | |
|-----------------------------|-----------------------------------|
| ○ Grassland | A Aspen |
| ○ ₁ Wild Pasture | B Balsam |
| ○ ₂ Hay Meadow | C Cultivated |
| 1 Bush | C ₁ Impoverished Field |
| 1 _s Swamp Brush | M Mixed Hardwoods |
| 2 Muskeg | L Maple |
| 3 Birch | K Oak |
| 4 Cedar | R Ash |
| 5 J. Pine | Swamp |
| 6 White Spruce | 7bx Non-productive - Stagnated |
| 7 Black " | W Water |
| T Tamarack | X Seed Trees |
| 8 Norway Pine | |
| 9 White Pine | |

- a Reproduction - up to 6'
- b Saplings - 6' in height to 4.5" D.H.H.
- c Poles - 9.5 D.b.h. - 9.5" D.b.h.
- Capitals - Sawtimber over 9.5" D.b.h.

- = Improved Road
- Woods Road
- λ Stream (showing direction)
- Body of water

∩ Pronounced Ridge

All data in red taken from original survey

NW NE Sec. 7 T148N R26W

N 1/2 NE S. 21

T148 R26

2920
2325

5250
80.00
52.50

2750

50
N 1/2 E
N 1/2 W
140
46
26
345
230
63

DISTANCES FROM CENTER OF ROADWAY FOR CROSS-SECTIONING.
ROADWAY 14 FEET WIDE. SIDE SLOPES $1\frac{1}{2}$ TO 1.
FOR SINGLE TRACK EMBANKMENT.

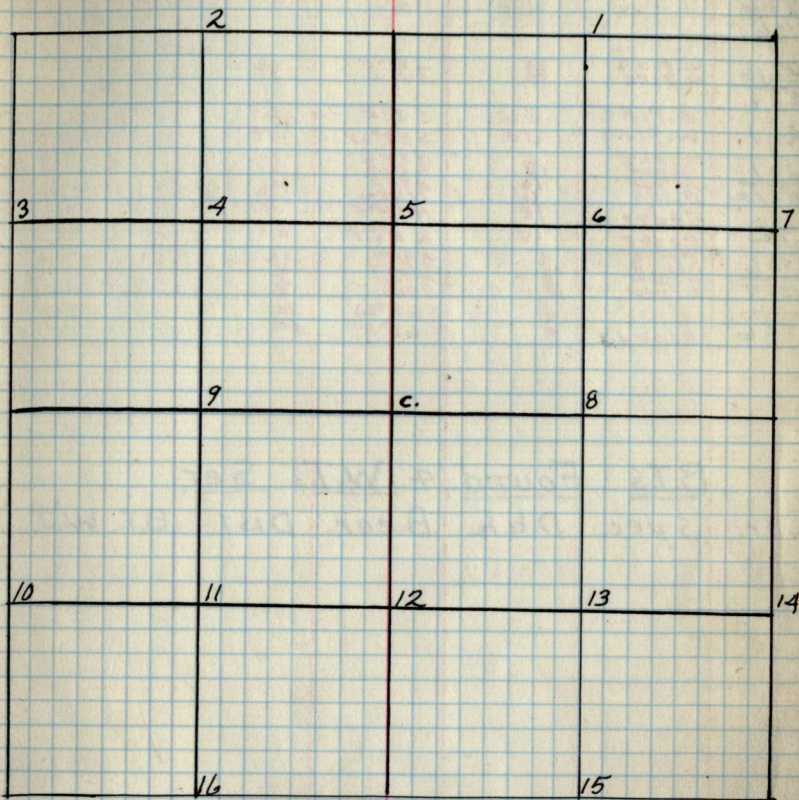
| | 0 | .1 | .2 | .3 | .4 | .5 | .6 | .7 | .8 | .9 | |
|----|------|------|------|------|------|------|------|------|------|------|----|
| 0 | 7.0 | 7.2 | 7.3 | 7.5 | 7.6 | 7.8 | 7.9 | 8.1 | 8.2 | 8.4 | 0 |
| 1 | 8.5 | 8.7 | 8.8 | 9.0 | 9.1 | 9.3 | 9.4 | 9.6 | 9.7 | 9.9 | 1 |
| 2 | 10.0 | 10.2 | 10.3 | 10.5 | 10.6 | 10.8 | 10.9 | 11.1 | 11.2 | 11.4 | 2 |
| 3 | 11.5 | 11.7 | 11.8 | 12.0 | 12.1 | 12.3 | 12.4 | 12.6 | 12.7 | 12.9 | 3 |
| 4 | 13.0 | 13.2 | 13.3 | 13.5 | 13.6 | 13.8 | 13.9 | 14.1 | 14.2 | 14.4 | 4 |
| 5 | 14.5 | 14.7 | 14.8 | 15.0 | 15.1 | 15.3 | 15.4 | 15.6 | 15.7 | 15.9 | 5 |
| 6 | 16.0 | 16.2 | 16.3 | 16.5 | 16.6 | 16.8 | 16.9 | 17.1 | 17.2 | 17.4 | 6 |
| 7 | 17.5 | 17.7 | 17.8 | 18.0 | 18.1 | 18.3 | 18.4 | 18.6 | 18.7 | 18.9 | 7 |
| 8 | 19.0 | 19.2 | 19.3 | 19.5 | 19.6 | 19.8 | 19.9 | 20.1 | 20.2 | 20.4 | 8 |
| 9 | 20.5 | 20.7 | 20.8 | 21.0 | 21.1 | 21.3 | 21.4 | 21.6 | 21.7 | 21.9 | 9 |
| 10 | 22.0 | 22.2 | 22.3 | 22.5 | 22.6 | 22.8 | 22.9 | 23.1 | 23.2 | 23.4 | 10 |
| 11 | 23.5 | 23.7 | 23.8 | 24.0 | 24.1 | 24.3 | 24.4 | 24.6 | 24.7 | 24.9 | 11 |
| 12 | 25.0 | 25.2 | 25.3 | 25.5 | 25.6 | 25.8 | 25.9 | 26.1 | 26.2 | 26.4 | 12 |
| 13 | 26.5 | 26.7 | 26.8 | 27.0 | 27.1 | 27.3 | 27.4 | 27.6 | 27.7 | 27.9 | 13 |
| 14 | 28.0 | 28.2 | 28.3 | 28.5 | 28.6 | 28.8 | 28.9 | 29.1 | 29.2 | 29.4 | 14 |
| 15 | 29.5 | 29.7 | 29.8 | 30.0 | 30.1 | 30.3 | 30.4 | 30.6 | 30.7 | 30.9 | 15 |
| 16 | 31.0 | 31.2 | 31.3 | 31.5 | 31.6 | 31.8 | 31.9 | 32.1 | 32.2 | 32.4 | 16 |
| 17 | 32.5 | 32.7 | 32.8 | 33.0 | 33.1 | 33.3 | 33.4 | 33.6 | 33.7 | 33.9 | 17 |
| 18 | 34.0 | 34.2 | 34.3 | 34.5 | 34.6 | 34.8 | 34.9 | 35.1 | 35.2 | 35.4 | 18 |
| 19 | 35.5 | 35.7 | 35.8 | 36.0 | 36.1 | 36.3 | 36.4 | 36.6 | 36.7 | 36.9 | 19 |
| 20 | 37.0 | 37.2 | 37.3 | 37.5 | 37.6 | 37.8 | 37.9 | 38.1 | 38.2 | 38.4 | 20 |
| 21 | 38.5 | 38.7 | 38.8 | 39.0 | 39.1 | 39.3 | 39.4 | 39.6 | 39.7 | 39.9 | 21 |
| 22 | 40.0 | 40.2 | 40.3 | 40.5 | 40.6 | 40.8 | 40.9 | 41.1 | 41.2 | 41.4 | 22 |
| 23 | 41.5 | 41.7 | 41.8 | 42.0 | 42.1 | 42.3 | 42.4 | 42.6 | 42.7 | 42.9 | 23 |
| 24 | 43.0 | 43.2 | 43.3 | 43.5 | 43.6 | 43.8 | 43.9 | 44.1 | 44.2 | 44.4 | 24 |
| 25 | 44.5 | 44.7 | 44.8 | 45.0 | 45.1 | 45.3 | 45.4 | 45.6 | 45.7 | 45.9 | 25 |
| 26 | 46.0 | 46.2 | 46.3 | 46.5 | 46.6 | 46.8 | 46.9 | 47.1 | 47.2 | 47.4 | 26 |
| 27 | 47.5 | 47.7 | 47.8 | 48.0 | 48.1 | 48.3 | 48.4 | 48.6 | 48.7 | 48.9 | 27 |
| 28 | 49.0 | 49.2 | 49.3 | 49.5 | 49.6 | 49.8 | 49.9 | 50.1 | 50.2 | 50.4 | 28 |
| 29 | 50.5 | 50.7 | 50.8 | 51.0 | 51.1 | 51.3 | 51.4 | 51.6 | 51.7 | 51.9 | 29 |
| 30 | 52.0 | 52.2 | 52.3 | 52.5 | 52.6 | 52.8 | 52.9 | 53.1 | 53.2 | 53.4 | 30 |
| 31 | 53.5 | 53.7 | 53.8 | 54.0 | 54.1 | 54.3 | 54.4 | 54.6 | 54.7 | 54.9 | 31 |
| 32 | 55.0 | 55.2 | 55.3 | 55.5 | 55.6 | 55.8 | 55.9 | 56.1 | 56.2 | 56.4 | 32 |
| 33 | 56.5 | 56.7 | 56.8 | 57.0 | 57.1 | 57.3 | 57.4 | 57.6 | 57.7 | 57.9 | 33 |
| 34 | 58.0 | 58.2 | 58.3 | 58.5 | 58.6 | 58.8 | 58.9 | 59.1 | 59.2 | 59.4 | 34 |
| 35 | 59.5 | 59.7 | 59.8 | 60.0 | 60.1 | 60.3 | 60.4 | 60.6 | 60.7 | 60.9 | 35 |
| 36 | 61.0 | 61.2 | 61.3 | 61.5 | 61.6 | 61.8 | 61.9 | 62.1 | 62.2 | 62.4 | 36 |

Chairs

Notes

Chairs

Type & Cultural Map



Remarks:

1

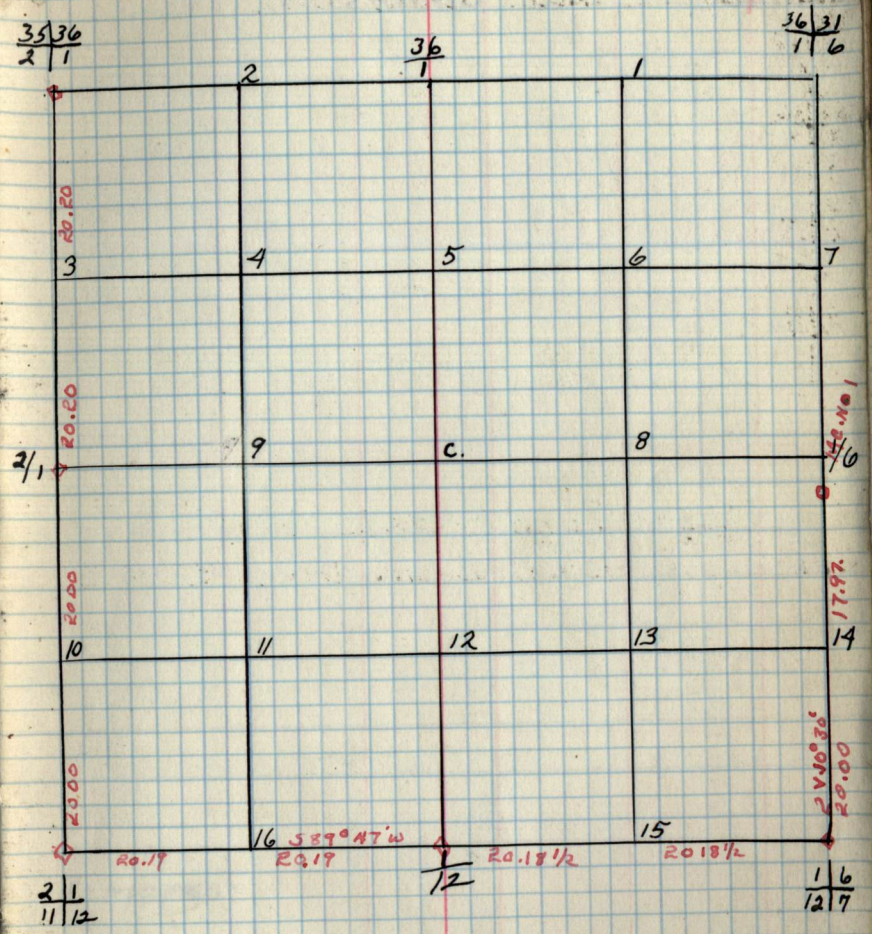
Original G.L.O. Corners

| Cor. | Spec. | D.b.h. | Bear. | DIST. |
|----------|---------|--------|--------|-------|
| 36/31 | | | | |
| 11/6 | | | | |
| 36 | | | | |
| 35/36 | W. PINE | 30 | 581°E | 57 |
| 2/1 | W. PINE | | 564°W | |
| 2/1 | W. PINE | 36 | 573°E | 33 |
| 2/1 | W. PINE | 30 | 589°W | 39 |
| 2/1 | Maple | 16 | 533°W | 13 |
| 11/12 | Aspen | 16 | 545°E | 21 |
| 1 | Pitch | 16 | N 63°W | 19 |
| 12 | Cedar | 18 | N 59°E | 7 |
| 1/6 | Cedar | 18 | S 85°E | 25 |
| 12/7 | Aspen | 16 | 531°W | 13 |
| 1/6 | Aspen | 16 | N 53°E | 15 |
| 1/6 | Aspen | 16 | 536°E | 8 |
| MC No. 1 | Aspen | 8 | S 25°W | 30 |
| 1/6 | Aspen | 8 | S 68°E | 52 |

B.T.'s Found & W.T.'s Set.

| Cor. | Spec. | D.b.h. | Bear. | DIST. | B.T. | W.T. |
|------|-------|--------|-------|-------|------|------|
|------|-------|--------|-------|-------|------|------|

Sec. 1. T148N-R26W
by-



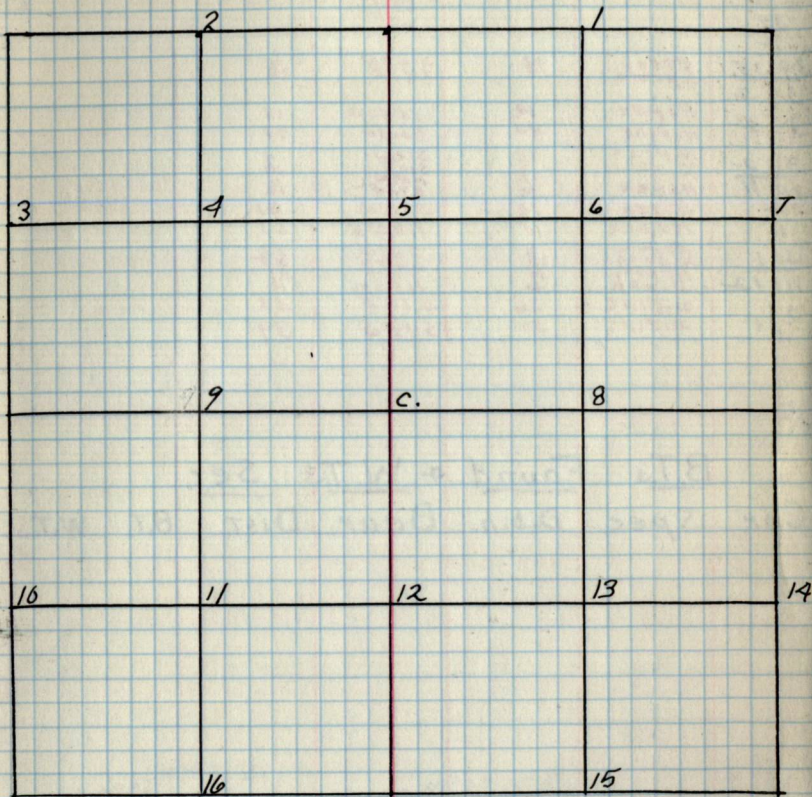
B.T.'s & W.T.'s (CONT.)
Cor. Spec. D.b.h. Bear. DIST. B.T. W.T.

| Cor. | Spec. | D.b.h. | Bear. | DIST. | B.T. | W.T. |
|------|-------|--------|-------|-------|------|------|
|------|-------|--------|-------|-------|------|------|

Notes

Chains

Chains

Type & Cultural Map

Remarks:

Original G.L.O. Corners

| Cor. | Spec. | D.b.h. | Bear | Dist. |
|-------|--------------|--------|---------|-------|
| 35/36 | W. PINE | 20 | S 21° E | 13 |
| 2/1 | W. PINE | 20 | S 69° W | 37 |
| 35 | | | | |
| 2 | | | | |
| 39/35 | Cedar Spruce | 17 | S 63° W | 12 |
| 3/2 | | | | |
| 3/2 | Aspen | 12 | N 40° W | 18 |
| | N. PINE | 20 | South | 48 |
| 3/2 | N. PINE | 12 | S 12° W | 4 |
| | " " | 12 | S 10° E | 10 |
| 10/11 | Aspen | 6 | N 40° W | 12 |
| 2 | Birch | 12 | S 40° W | 31 |
| 11 | Maple | 5 | N 23° E | 23 |
| 2/1 | Maple | 9 | S 33° W | 13 |
| | Aspen | 12 | S 50° E | 21 |
| 11/12 | Birch | 6 | N 63° W | 17 |
| 2/1 | W. PINE | 36 | S 73° E | 33 |
| | W. PINE | 30 | S 89° W | 39 |

B.T.'s Found & W.T.'s Set.

| Cor. | Spec. | D.b.h. | Bear. | Dist. | B.T. | W.T. |
|------|-------|--------|-------|-------|------|------|
|------|-------|--------|-------|-------|------|------|

Sec 2 T148N R26
by-



B.T.'s & W.T.'s (CONT.)

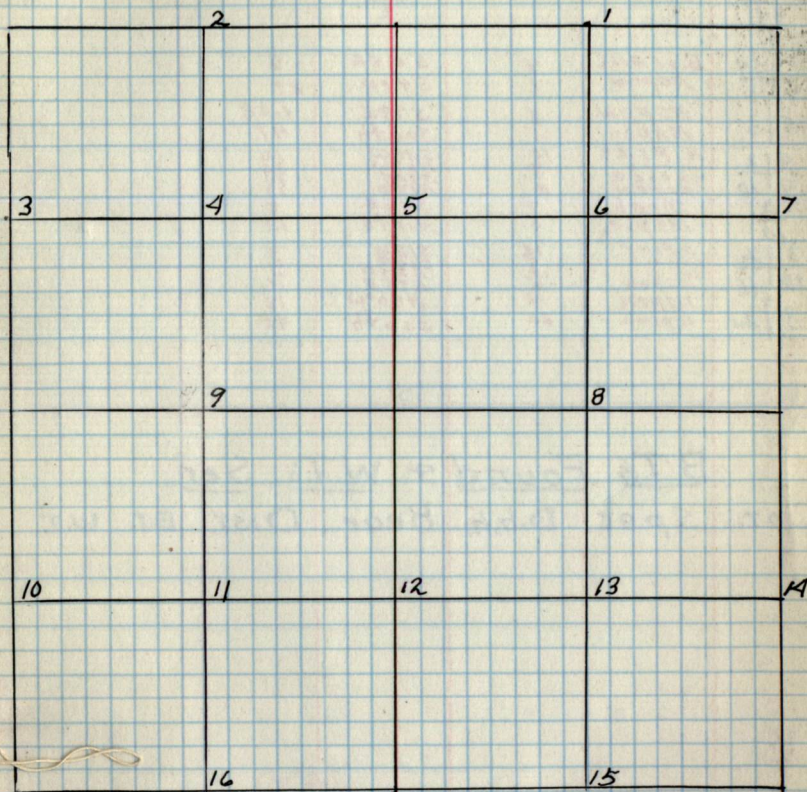
| Cor. | Spec. | D.b.h. | Bear. | Dist. | B.T. | W.T. |
|------|-------|--------|-------|-------|------|------|
|------|-------|--------|-------|-------|------|------|

Notes

Chairs

Chairs

Type + Cultural Map



Remarks:

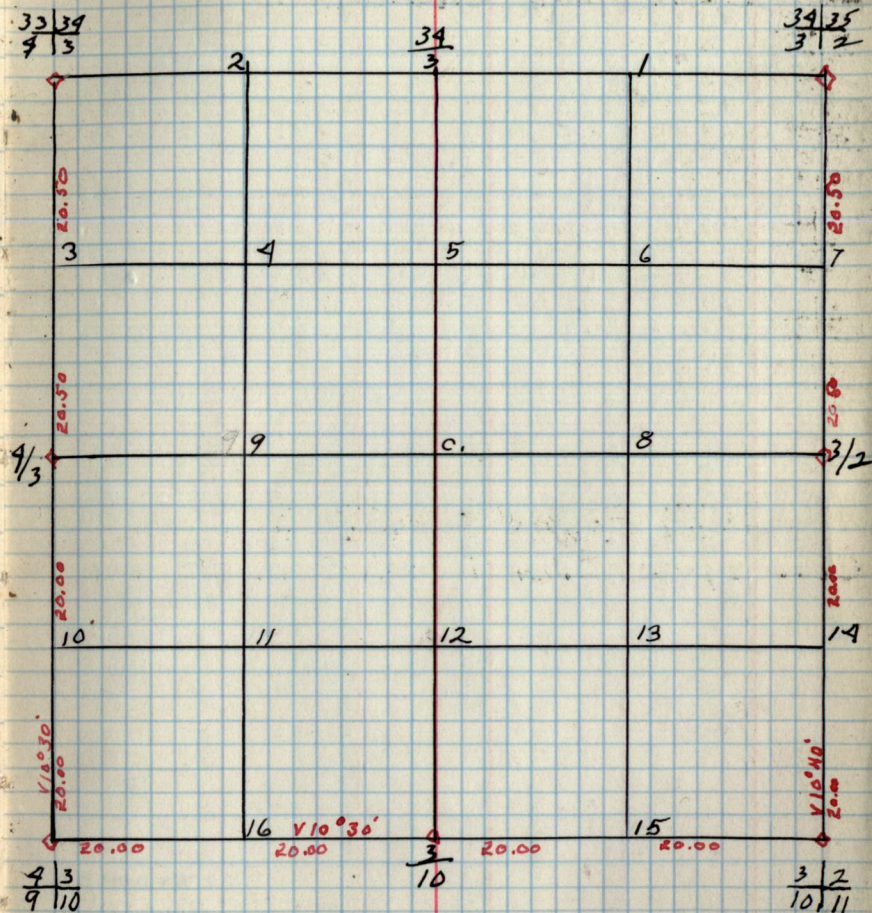
Original G.L.O. Corners

| Cor. | Spec. | D.b.h. | Bear. | Dist. |
|--------------|-------------------|----------|--------------------|------------|
| 39 35 3 2 | moder spruce | 12 7 | S 63° W S 40° E | 6 12 |
| 33 39 3 | B.OFRILL ASPEN | 9 7 | S 55° E S 49° W | 6 27 |
| 4 3 | ASPEN MAPLE | 8 5 | S 79° E South | 1.22 47 |
| 4 3 | N. PINE Spruce | 10 14 | S 36° W N 67° W | 10 63 |
| 9 10 | ASPEN BIRCH | 8 7 | S 75° E S 16° E | 13 8 |
| 3 2 10 | MAPLE N. PINE | 5 12 | North | 13 4 |
| 10 11 | " " ASPEN | 12 16 | S 12° W N 84° W | 10 12 |
| 3 2 | ASPEN N. PINE | 12 20 | N 40° W south | 18 48 |

B.T.'s Found & W.T.'s Set

| Cor. | Spec. | D.b.h. | Bear. | DIST. | B.T. | W.T. |
|------|-------|--------|-------|-------|------|------|
|------|-------|--------|-------|-------|------|------|

Sec. 3 T148N R26W.



B.T.'s & W.T.'s (CONT.)

| Cor. | Spec. | D.b.h. | Bear. | DIST. | B.T. | W.T. |
|------|-------|--------|-------|-------|------|------|
|------|-------|--------|-------|-------|------|------|

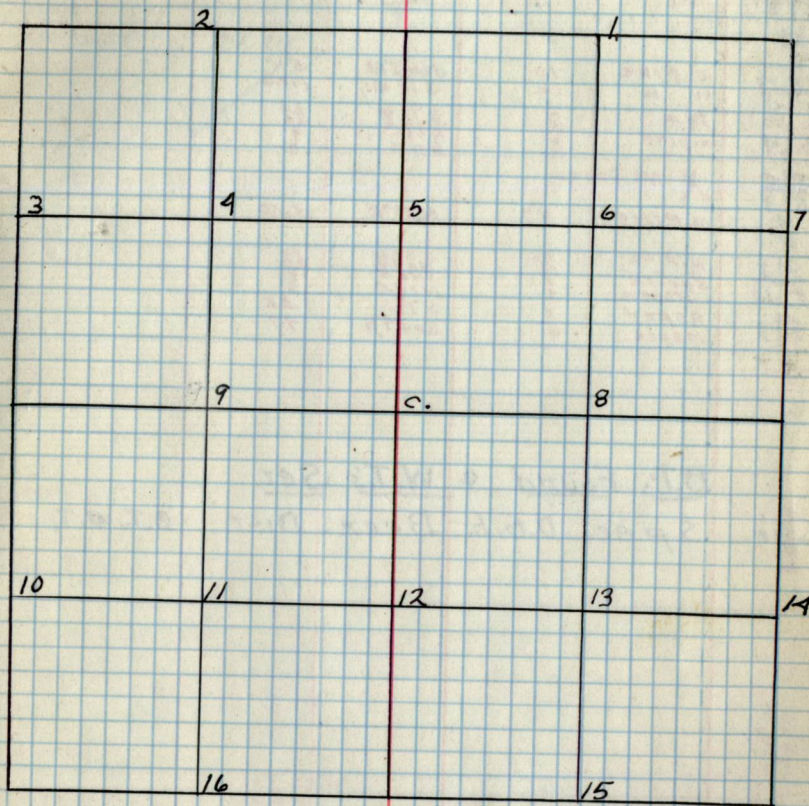
Notes

Chains

Chains

4

Type & Cultural Map



Remarks:

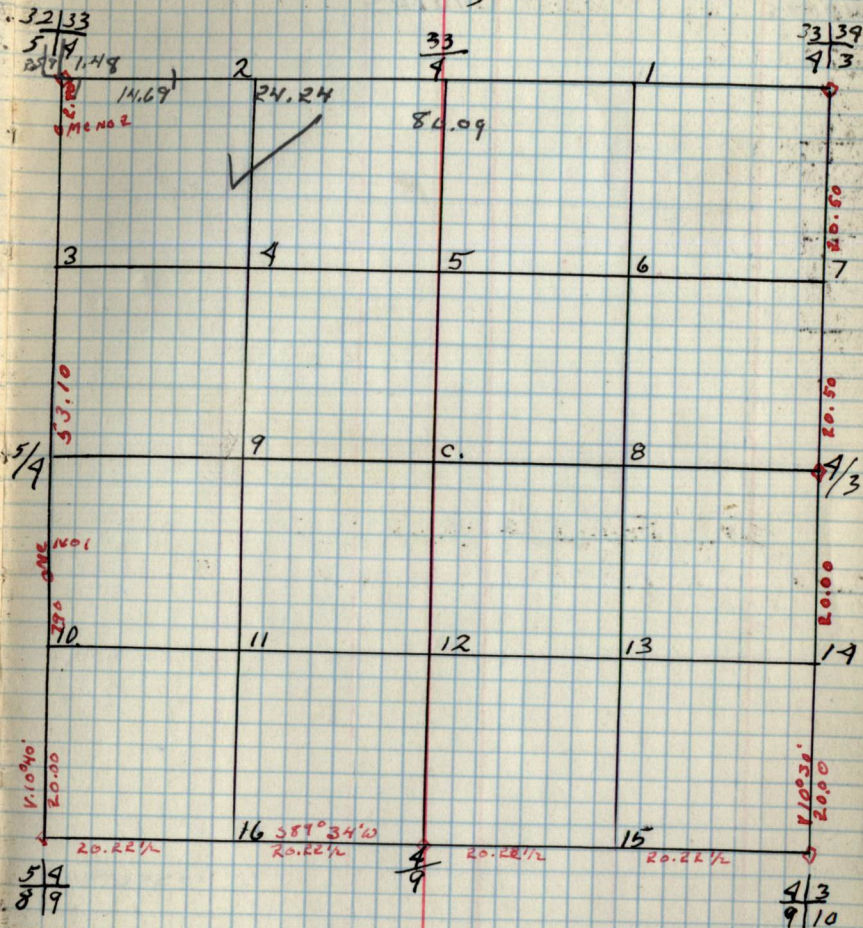
Original G.L.O. Corners

| Cor. | Spec. | D.b.h. | Bear. | Dist. |
|----------------|---------------------|--------|--------------|---------|
| 33/39 9/3 | B. of Fish Aspen | 9 7 | 55°E 549W | 6 29 |
| 32/33 5/9 | w. PINE | 10 | N69W | 54 |
| 5/9 | " " | 16 | 511W | 1.38 |
| Mc No 1 5/9 | Tom. | 4 | 371E | 23 |
| Mc No 2 5/9 | w. pine | 6 | N88W | 20 |
| 5/9 | " " | 6 | N11W | 9 |
| 8/9 | X No trees | | | 13 |
| 9/9 | N. PINE | 8" | N89E | 3.80 |
| 9/3 | N. PINE | 10 | 536W | 10 |
| 9/10 | Spruce | 7 | 572E | 13 |
| 4/3 | Aspen | 8 | N17E | 15 |
| | Maple | 5 | 577E | 1.22 |
| | | | South | 47 |

B.T.'s Found & W.T.'s Ser.

| Cor. | Spec. | D.b.h. | Bear. | Dist. | B.T. | W.T. |
|------|-------|--------|-------|-------|------|------|
|------|-------|--------|-------|-------|------|------|

Sec. 4 T148N. R26W.
by -



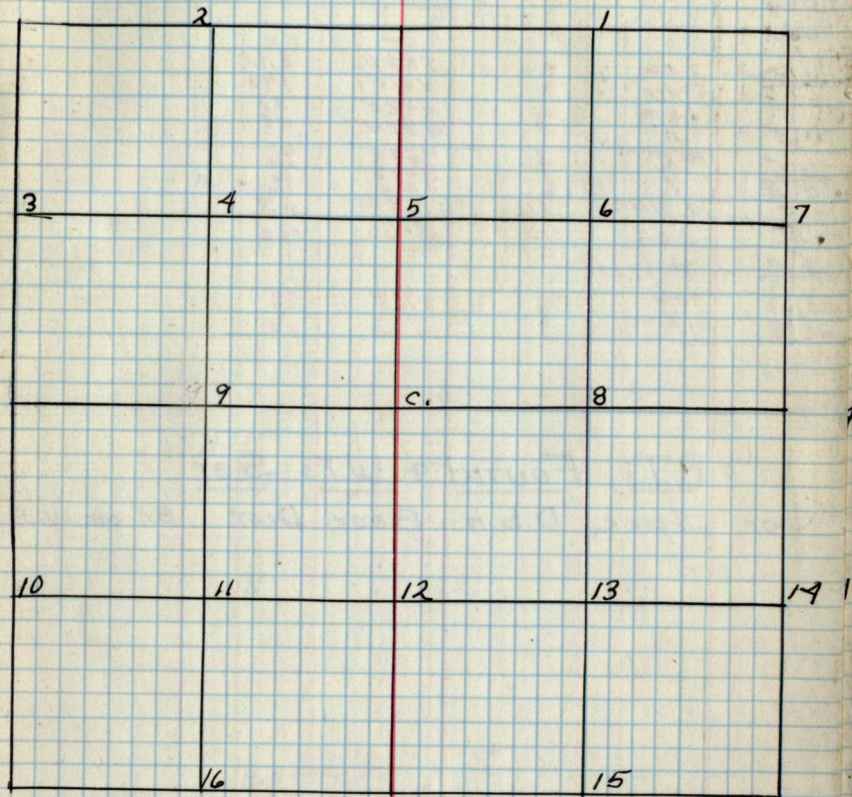
B.T.'s & W.T.'s (CONT.)

| Cor. | Spec. | D.b.h. | Bear. | Dist. | B.T. | W.T. |
|------|-------|--------|-------|-------|------|------|
|------|-------|--------|-------|-------|------|------|

Notes

Chains

Chains

Type 7 Cultural Map

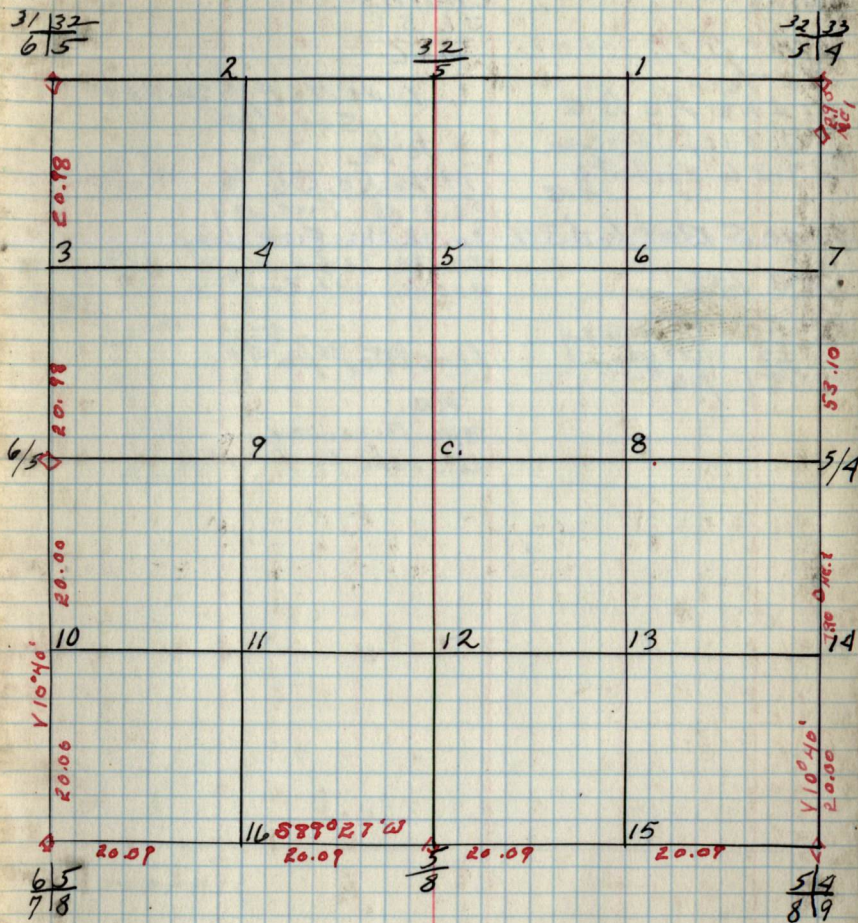
Remarks:

Original G.L.O. Corners

| Cor. | Spec. | D.b.h. | Bear. | DIST. |
|-------|----------|--------|-------|-------|
| 32/33 | w. PINE | 10 | N69W | 54 |
| 5/9 | " " | 16 | S11W | 138 |
| 32/5 | | | | |
| 31/32 | tom. | 8 | S88E | 2.12 |
| 6/5 | Cedar | 6 | N69E | 148 |
| 6/5 | tom | 4 | N42E | 37 |
| 6/5 | " | 3 | S87W | 38 |
| 6/5 | ASPEN | 7 | N32E | 23 |
| 7/8 | " | 7 | N25W | 24 |
| 5/8 | " | 6 | S47E | 16 |
| 5/8 | w. PINE | 16 | N3W | 63 |
| 5/8 | OAK | 12 | S16W | 40 |
| 5/4 | No trees | | | |
| 8/9 | tom. | 4 | S41W | 23 |
| Mc. 1 | w. PINE | 5 | S16E | 20 |
| Mc. 2 | " " | 5 | N30W | 13 |
| | " " | 5 | N11W | 13 |

B.T.'s Found & W.T.'s Set.

Cor. Spec. D.b.h. Bear. DIST. B.T. OR. W.T.

Sec. 5 T148N - R26W
by-

B.T.'s & W.T.'s (CONT.)
Cor. Spec. D.b.h. Bear. DIST. B.T. W.T.

Notes

Chains

Line F of Sec cor.

70 ft

11 chs A C B C

30.00 chs Fireway

37.26 chs Lots
4.5

Line S Bet Lots 3 & 4

A C B B

4.67 chs Fireway

1.67 Fireway
40.81 1/16 #

Chains

36 | 31
176

Line No F of Cor Bet

Sec. 116

70 ft

14 chs A C B B

20.21 chs Fireway

30.92 chs Fireway

38 chs 70 ft

41 chs sec. cor.

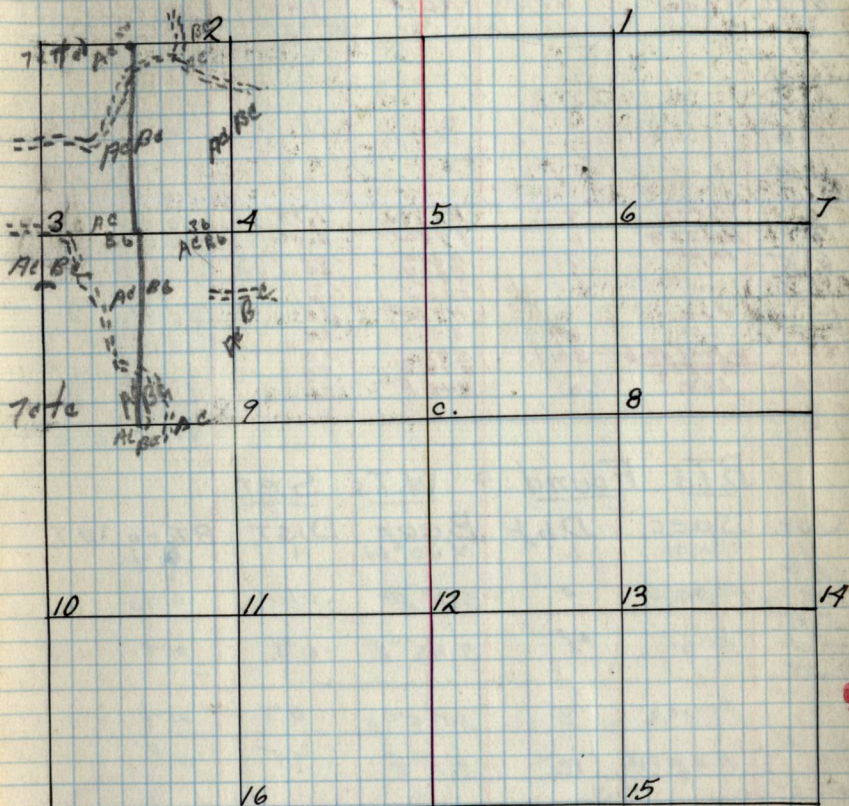
Line D of 1/16 #7

A C.

19.61 Fireway

20.58 chs lot cor.

Type & Cultural Map

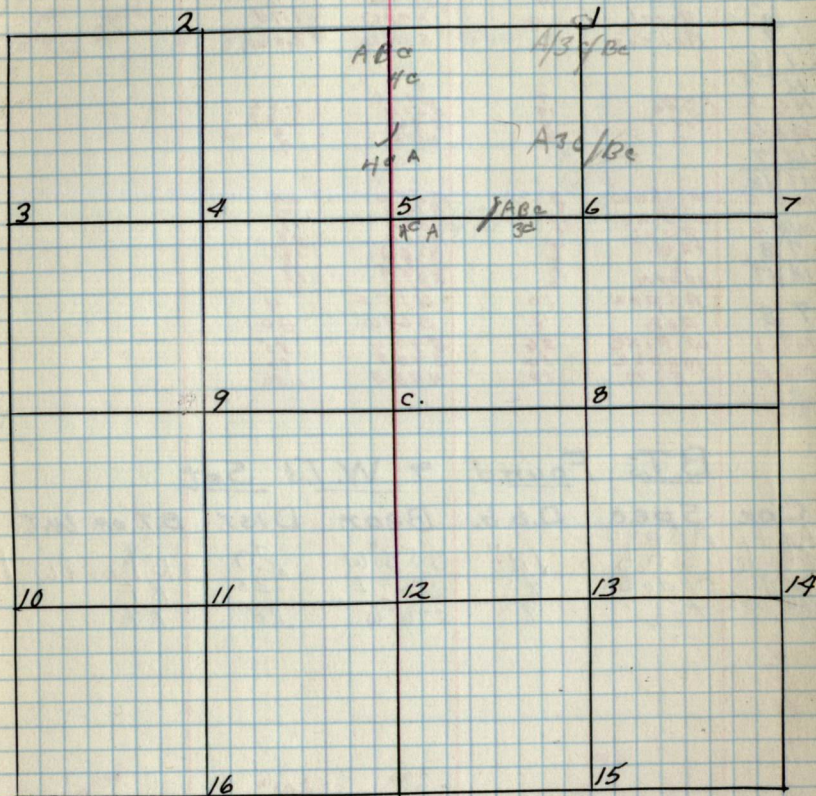


Remarks:

Notes

Charts

Charts

Type & Cultural Map

Remarks:

8

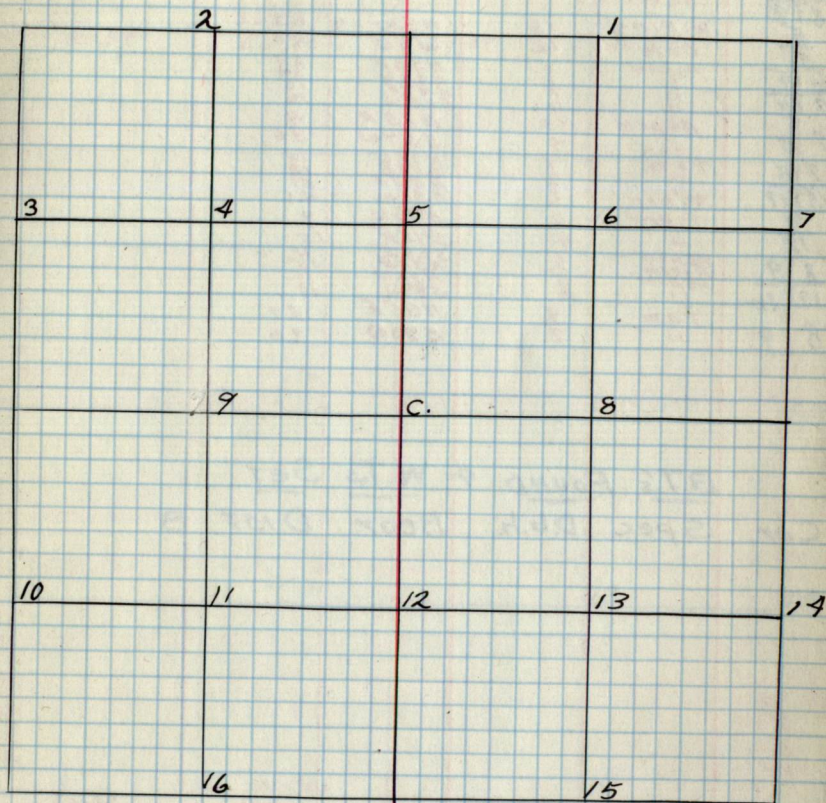
Chains

Notes

Chains

Type & Cultural Map

8



Remarks:

8

Original G.L.O. Corners

| Cor. | Spec. | Db.h. | Bear. | DIST. |
|-------|----------|-------|-------|-------|
| 5/9 | No trees | | | |
| 8/9 | W. PINE | 16 | N3W | 63 |
| 5 | OAK | 12 | S16W | 40 |
| 6/5 | ASPEN | 3 | N32E | 23 |
| 7/8 | " | 2 | N53E | 16 |
| 7/8 | " | 2 | N30W | 16 |
| 7/8 | ASPEN | 10 | N75E | 4 |
| 7/8 | OAK | 9 | S67W | 30 |
| 7/8 | TAM. | 9 | N78E | 15 |
| 18/17 | " | 9 | N55E | 21 |
| 8 | ASPEN | 6 | S31W | 41 |
| 17 | ASPEN | 4 | N36W | 9 |
| 8/9 | " | 4 | S42E | 15 |
| 17/16 | ASPEN | 4 | S26E | 4 |
| 8/9 | ASPEN | 3 | N36W | 15 |
| 8/9 | " | 3 | S79W | 14 |
| | TAM | 8 | N65E | 27 |
| | " | 7 | S90W | 20 |

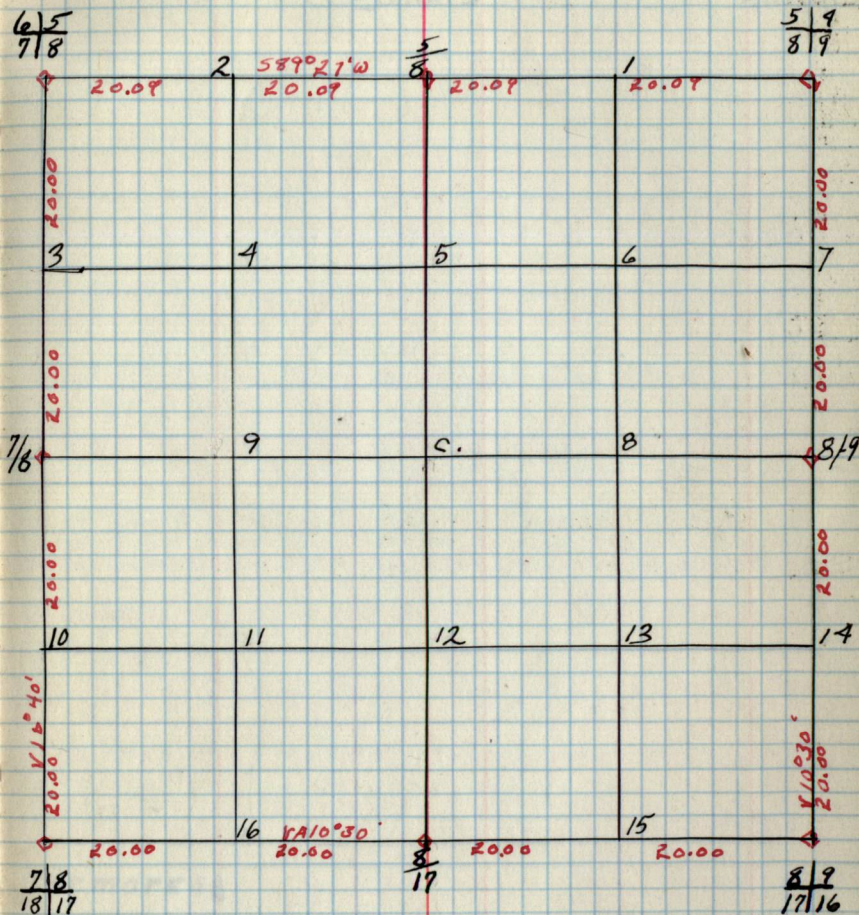
B.T.'s FOUND & W.T.'s SET

Cor. Spec Db.h. Bear. DIST. B.

40.18

Sec. 8 T148N - R26W.

by-

B.T.'s & W.T.'s (Cor.)

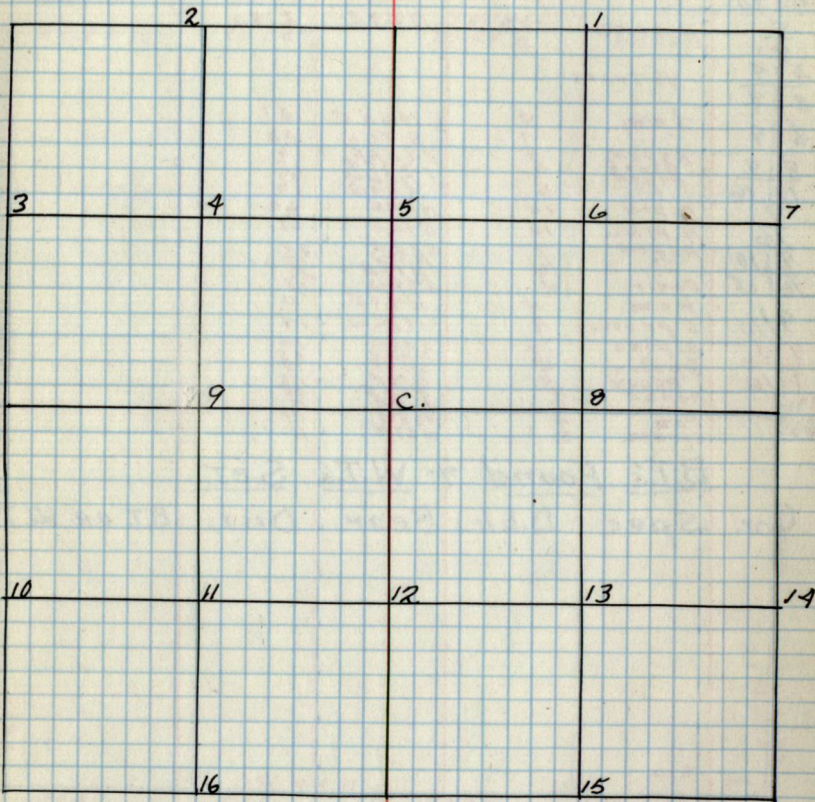
Cor. Spec. Db.h. Bear. DIST. B.T. OR. W.T.

Chains

Notes

Chains

Type & Cultural Map



Remarks

REMARKS

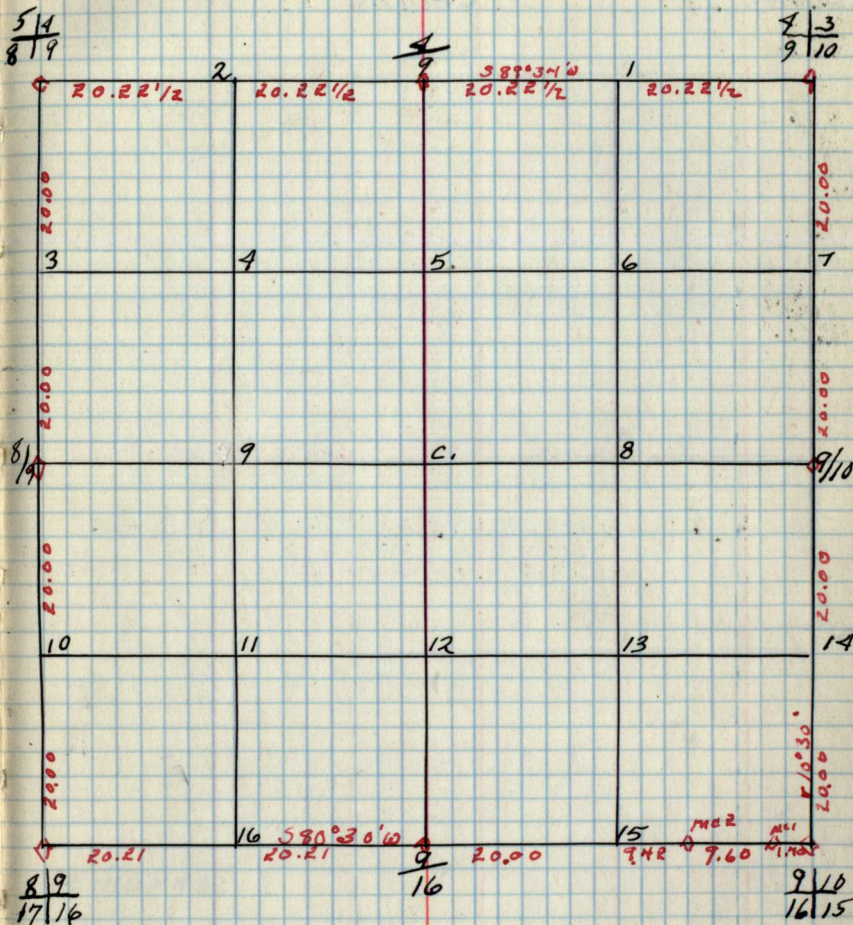
Original G.L.O. Corners

| Cor. | Spec. | D.b.h. | Bear. | DIST. |
|-------|-----------|--------|-------|-------|
| 4/3 | No. trees | | | |
| 9/10 | N. PINE | 8" | N89E | 3.50 |
| 5/9 | No trees | | | |
| 8/9 | tam | 8 | N65E | 27 |
| 8/9 | Aspen | 7 | S80W | 20 |
| 10/16 | Aspen | 4 | S76E | 4 |
| 9 | Aspen | 5 | N35E | 12 |
| 10 | Aspen | 6 | N36W | 14 |
| 9/10 | Aspen | 10 | S89W | 60 |
| 10 | N. PINE | 16 | N57E | 61 |
| 9/10 | Aspen | 7 | S75E | 14 |
| 10/15 | " | 7 | N50E | 12 |
| 9/10 | Cedar | 4 | N49E | 13 |
| 4/3 | tam | 4 | N89E | 9 |
| 9/10 | spruce | 4 | N72W | 14 |
| 4/3 | N. PINE | 10 | S36W | 10 |
| 9/10 | spruce | 16 | N65W | 23 |
| Mc. 1 | Aspen | 7 | S42E | 17 |
| Mc. 2 | Aspen | 4 | N19E | 13 |
| | tam | 4 | N35E | 17 |
| | spruce | 4 | S75E | 19 |
| | | 4 | N65W | 11 |
| | | 4 | N21E | 11 |

B.T.'s Found & W.T.'s Set.

| Cor. | Spec. | D.b.h. | Bear. | DIST. | B.T. OR W.T. |
|------|-------|--------|-------|-------|--------------|
|------|-------|--------|-------|-------|--------------|

Sec. 9 T148N R26W.



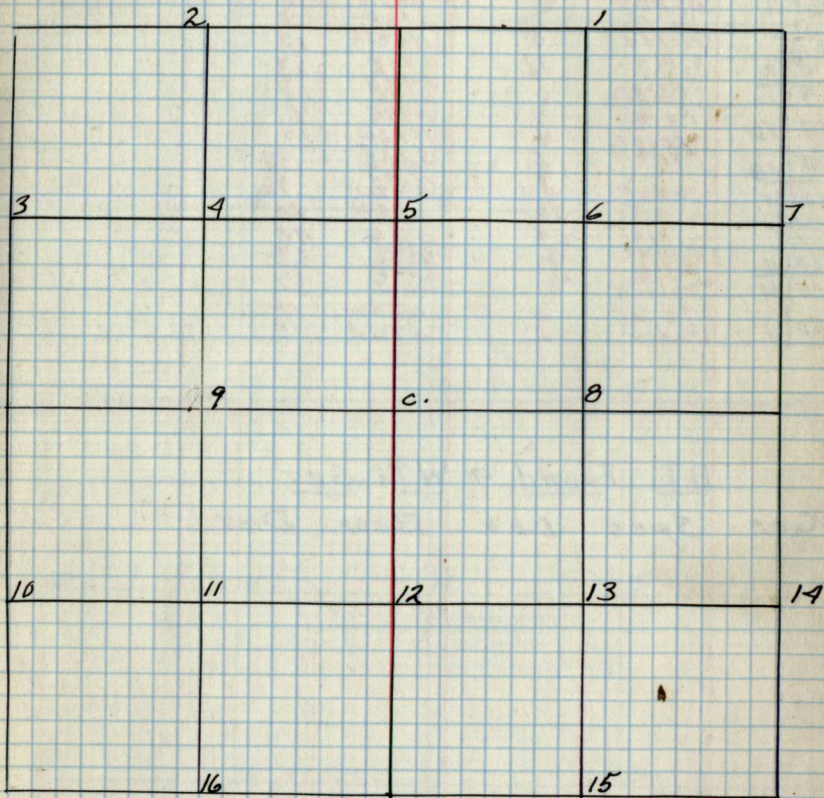
B.T.'s & W.T.'s (CONT.)

| Cor. | Spec. | D.b.h. | Bear. | DIST. | B.T. W.T. |
|------|-------|--------|-------|-------|-----------|
|------|-------|--------|-------|-------|-----------|

Notes

Chairs

Chairs

Type & Cultural Map

Remarks:

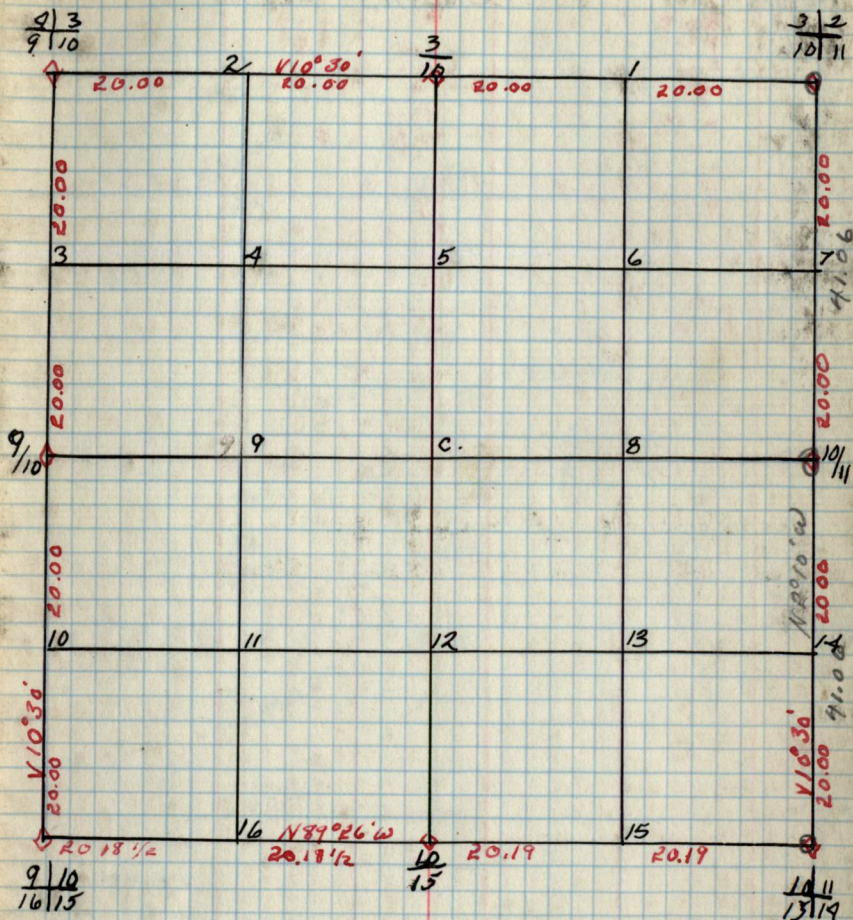
Original G.L.O. Corners

| Cor. | Spec. | D.b.h. | Bear. | DIST. |
|-------|---------|--------|-------|-------|
| 3/2 | PINE | 12 | S12W | 10 |
| 10/11 | ASPEN | 12 | S12W | 10 |
| 3/10 | Birch | 7 | N75E | 10 |
| 10 | Maple | 5 | S16E | 9 |
| 9/3 | N. PINE | 10 | North | 13 |
| 9/10 | " | 7 | S36W | 13 |
| 9/10 | ASPEN | 8 | S42E | 13 |
| 9/10 | Tam | 4 | N18E | 9 |
| 9/10 | Spruce | 4 | N89E | 9 |
| 16/15 | Aspen | 7 | N72W | 14 |
| 14 | " | 6 | S73E | 14 |
| 15 | Cedar | 4 | N13E | 13 |
| 10/11 | " | 4 | S48W | 13 |
| 15/14 | W. PINE | 30 | N22W | 26 |
| 10/11 | N. PINE | 24 | N22W | 42 |
| 15/14 | Birch | 18 | N34E | 34 |
| 10/11 | W. PINE | 20 | S41E | 30 |
| 10/11 | Tam. | 6 | S6W | 30 |
| | Cedar | 12 | N84W | 16 |
| | | | S76E | 12 |

B.T.'s Found & W.T.'s Set

Cor. Spec D.b.h. Bear. DIST.

Sec. 10 T148N - R26W
by -



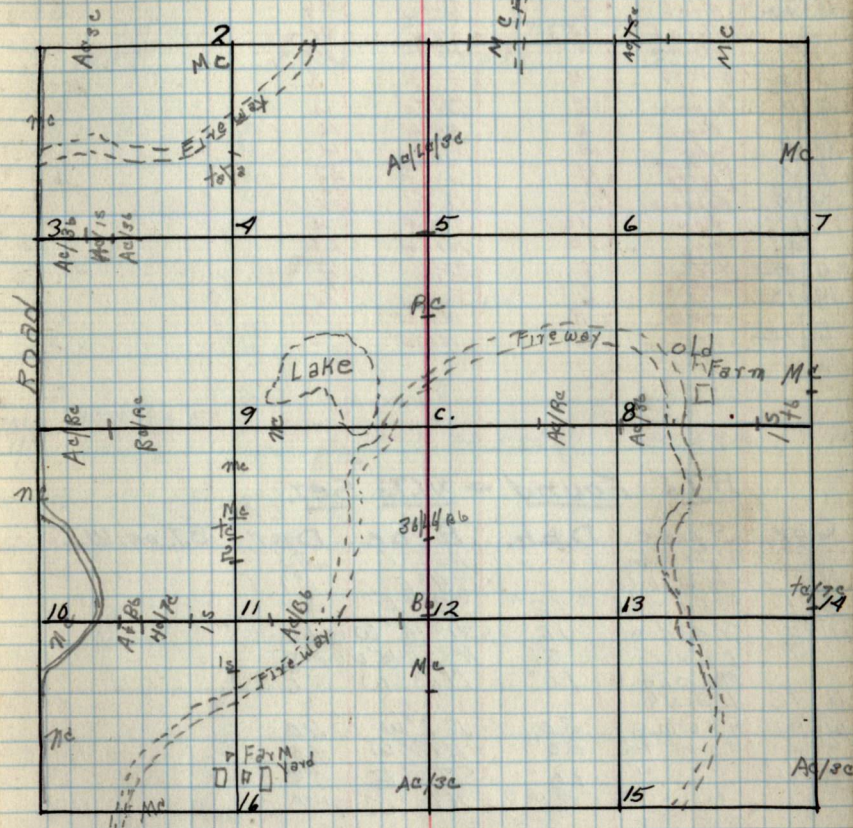
B.T.'s & W.T.'s (CONT.)
Cor. Spec. D.b.h. Bear. DIST. B.T. W.T.

Charts

Notes

Charts

Type & Cultural Map



Remarks:

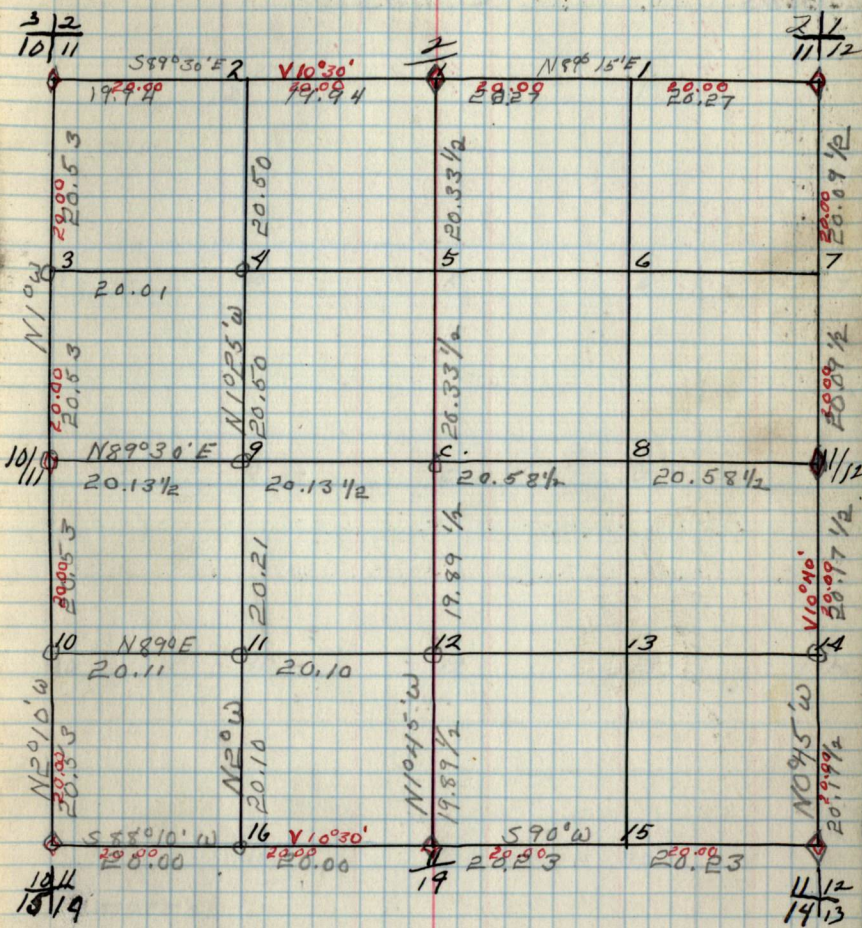
Original G.L.O. Corners

| Cor. | Spec. | D.b.h. | Bear. | DIST. |
|-------|---------|--------|---------|-------|
| 2/1 | Maple | 10 | S 33° W | 19.74 |
| 11/12 | Aspen | 6 | S 85° E | 20.00 |
| 2/1 | Birch | 12 | N 63° W | 19 |
| 2/1 | Maple | 6 | S 4° W | 31 |
| 3/2 | N. Pine | 12 | N 23° E | 23 |
| 10/11 | " | 12 | S 12° W | 4 |
| 10/11 | " | 12 | S 10° E | 10 |
| 10/11 | Aspen | 6 | N 84° E | 12 |
| 10/11 | Tam. | 6 | N 84° W | 16 |
| 10/11 | Cedar | 12 | S 76° E | 12 |
| 10/11 | N. Pine | 18 | N 39° W | 34 |
| 10/11 | w. Pine | 20 | N 36° E | 30 |
| 10/11 | Balsam | 20 | S 54° W | 35 |
| 11/14 | Tam. | 16 | S 11° E | 4 |
| 11/14 | " | 16 | N 10° W | 23 |
| 11/12 | Oak | 7 | N 22° W | 16 |
| 11/12 | Maple | 7 | N 15° E | 39 |
| 11/12 | " | 8 | S 54° W | 25 |
| 11/12 | " | 6 | N 18° W | 10 |
| 11/12 | " | 6 | N 81° E | 5 |

B.T.'s Found & W.T.'s Set.

| Cor. | Spec. | D.b.h. | Bear. | DIST. | B.T. OR. W.T. |
|-------|--------------|--------|-------------|-------|---------------|
| 2 | Maple stump | 1 | N 25° E | .25 | |
| 11 | stump hole | | S 4° E | .31 | |
| 2/1 | Asp. - Nstob | 12" | S 36° E | .35 | |
| 11/12 | Maple | 16" | S 31° 45' W | .12 | |
| 11/12 | LINN | 8" | N 85° 45' W | .28 | |
| 11/12 | Maple | 10" | N 13° W | .36 | |
| 11/12 | N. Pine | 30" | N 9° W | .90 | |
| 11/13 | Stump | 20" | N 18° W | .16 | |
| 11/12 | Tamstob | 10" | S 76° E | .05 | |
| 11/12 | " | 8" | N 10° W | .12 | |

Sec. 11 T148N-R26W
by-



B.T.'s & W.T.'s (CONT.)

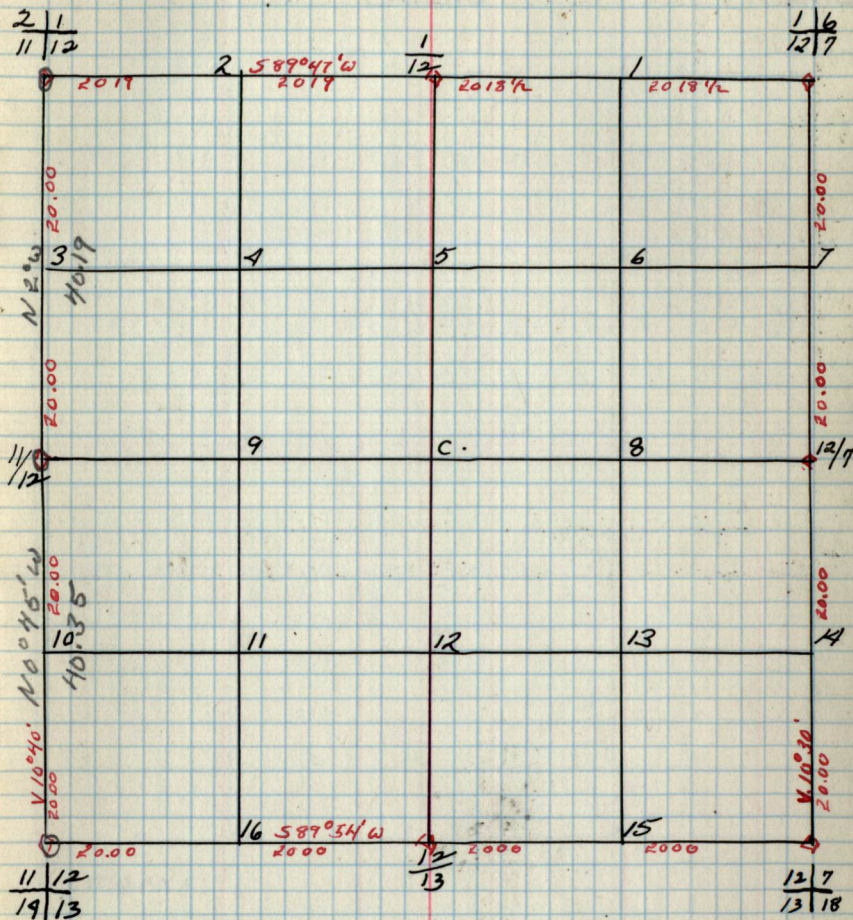
| Cor. | Spec. | D.b.h. | Bear. | DIST. | B.T. W.T. |
|------|-------|--------|-------|-------|-----------|
|------|-------|--------|-------|-------|-----------|

Original G.L.O. Corners

| Cor. | Spec. | D.b.h. | Bear. | Dist. |
|-------|-----------|--------|-------|-------|
| 1/6 | Maple | 15 | S 33W | 15 |
| 12/7 | " | 12 | N 75E | 8 |
| 1/2 | Cedar | 12 | N 54E | 9 |
| 2/1 | Cedar | 18 | S 28E | 25 |
| 11/12 | Maple | 10 | S 33W | 13 |
| 11/12 | Maple | 10 | N 45E | 21 |
| 11/12 | Birch | 6 | N 63W | 14 |
| 11/12 | Tam. | 6 | N 18W | 10 |
| 11/12 | " | 6 | N 87E | 5 |
| 14/13 | Oak | 7 | N 22W | 16 |
| 12/13 | Maple | 5 | N 15E | 13 |
| 12/13 | " | 5 | S 54W | 25 |
| 12/7 | Tam. | 6 | N 4E | 23 |
| 13/18 | Tam. Pine | 4 | S 5E | 17 |
| 12/7 | " | 8 | S 15W | 12 |
| 12/7 | " | 8 | S 37E | 27 |
| 12/7 | Birch | 6 | N 50E | 16 |
| 12/7 | Birch | 8 | N 3W | 30 |
| 12/7 | Sugar | 8 | N 82E | |
| 12/7 | Sugar | 8 | S 18W | |

B.T.'s Found & W.T.'s Set.

Cor. Spec. D.b.h. Bear. Dist. B.T. or W.T.

Sec 12 T148N-R26W
by-

B.T.'s & W.T.'s (CONT.)

Cor. Spec. D.b.h. Bear. Dist. B.T. W.T.

13

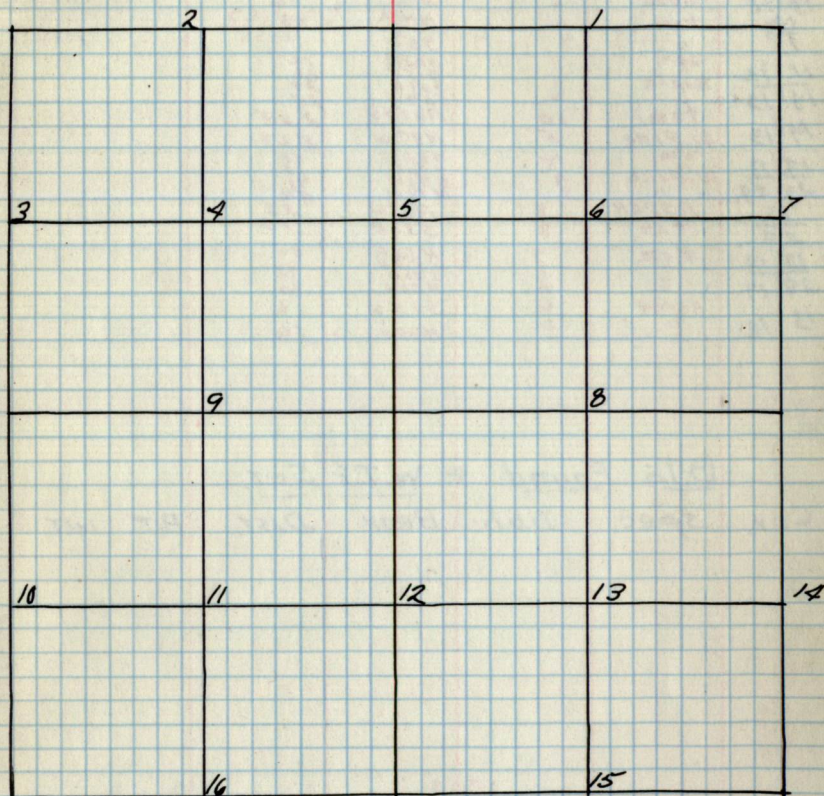
Notes

Chains

Chains

Type & Cultural Map

13



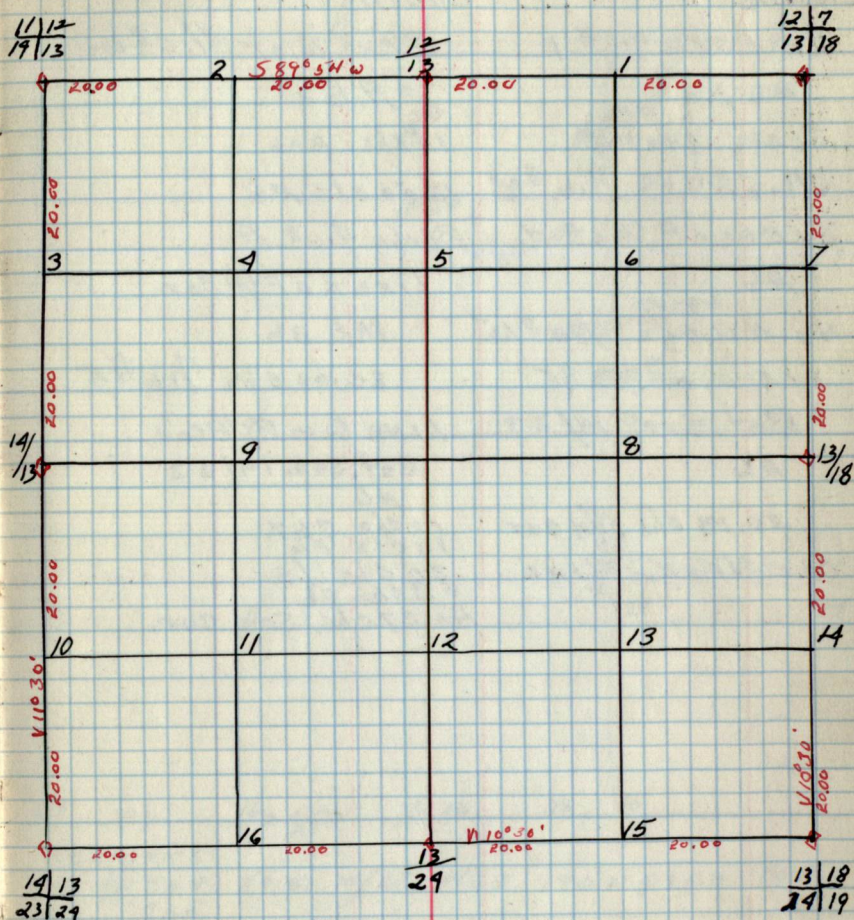
Remarks:

Original G.L.O. Corners

| Cor. | Spec. | Db.h. | Bear. | DIST. |
|-------|---------|-------|-------|-------|
| 12/7 | N. PINE | 16 | S150 | 12 |
| 13/18 | " " | 18 | S30E | 25 |
| 12/13 | Birch | 6 | N80E | 16 |
| 13/13 | fam | 4 | N4E | 23 |
| 11/12 | " | 7 | SSE | 17 |
| 14/13 | Maple | 6 | N22W | 14 |
| 14/13 | fam. | 10 | N54E | 37 |
| 14/13 | W. PINE | 5 | S54W | 26 |
| 14/13 | fam. | 6 | N074 | 2.63 |
| 14/13 | W. PINE | 5 | N87W | 2.67 |
| 14/13 | " | 8 | N82E | 47 |
| 23/29 | W. PINE | 8 | S30W | 41 |
| 13/29 | ASPEN | 8 | N72W | 64 |
| 13/29 | fam | 8 | N81W | 23 |
| 13/18 | fam. | 4 | S31E | 13 |
| 29/19 | " | 4 | N55E | 35 |
| 13/18 | " | 3 | S30W | 38 |
| 29/19 | ASPEN | 6 | N30W | 60 |
| 13/18 | " | 6 | S35W | 6 |
| | " | 6 | N82E | 16 |

B.T.s Found & W.T.s Ser.

Cor. Spec. Db.h. Bear. DIST. B.T. W.T.

Sec. 13 T148N-R26W.
by -

B.T.s & W.T.s (CONT.)

Cor. Spec. Db.h. Bear. DIST. B.T. OR. W.T.

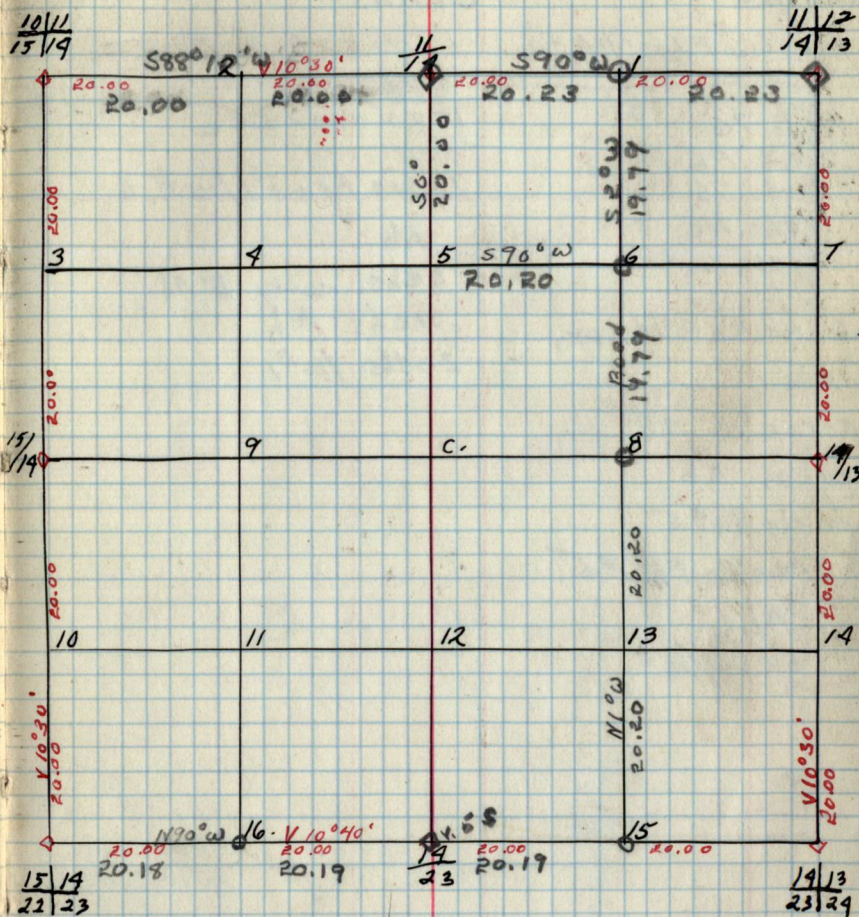
Original G.L.O. corners

| Cor. | Spec. | D.b.h. | Bear. | Dist. |
|-------|---------|--------|-------|-------|
| 11/12 | oak | 3 | N22W | 16 |
| 14/13 | Maple | 5 | N15E | 25 |
| 11/14 | " | 14 | S16E | 37 |
| 10/11 | " | 10 | S24W | 20 |
| 15/14 | fam. | 14 | S11E | 4 |
| 15/14 | " | 10 | N16W | 23 |
| 10/11 | N. pine | 18 | N37W | 34 |
| 15/14 | Birch | 20 | N36E | 30 |
| 22/23 | Balsam | 6 | S24W | 35 |
| 15/14 | fam. | 10 | North | 2.63 |
| 15/14 | W. Pine | 5 | N87W | 2.67 |
| 15/14 | N. Pine | 6 | N43E | 34 |
| 22/23 | Aspen | 6 | N63W | 48 |
| 19/23 | Birch | 8 | S18E | 15 |
| 19/13 | fam. | 5 | S18W | 66 |
| 23/29 | Aspen | 6 | N40W | 32 |
| 19/13 | Birch | 8 | S25E | 27 |
| 23/29 | fam. | 5 | N82E | 47 |
| 19/13 | W. Pine | 8 | S20W | 41 |
| 19/13 | Birch | 12 | N15W | 54 |
| 19/13 | Birch | 8 | N55E | 17 |
| 19/13 | Birch | 8 | S83W | 10 |

B.T.'s Found & W.T.'s Set.

| Cor. | Spec. | D.b.h. | Bear. | Dist. | B.T. | W.T. |
|--------|-------|--------|-------|-------|------|------|
| 14/23 | Aspen | 5 | N46E | .60 | wt. | |
| 11/6#5 | Birch | 10" | N26°W | .07 | wt. | |

Sec. 14 T148N-R26W
by-



B.T.'s & W.T.'s (CONT.)

| Cor. | Spec. | D.b.h. | Bear. | Dist. | B.T. | W.T. |
|------|-------|--------|-------|-------|------|------|
|------|-------|--------|-------|-------|------|------|

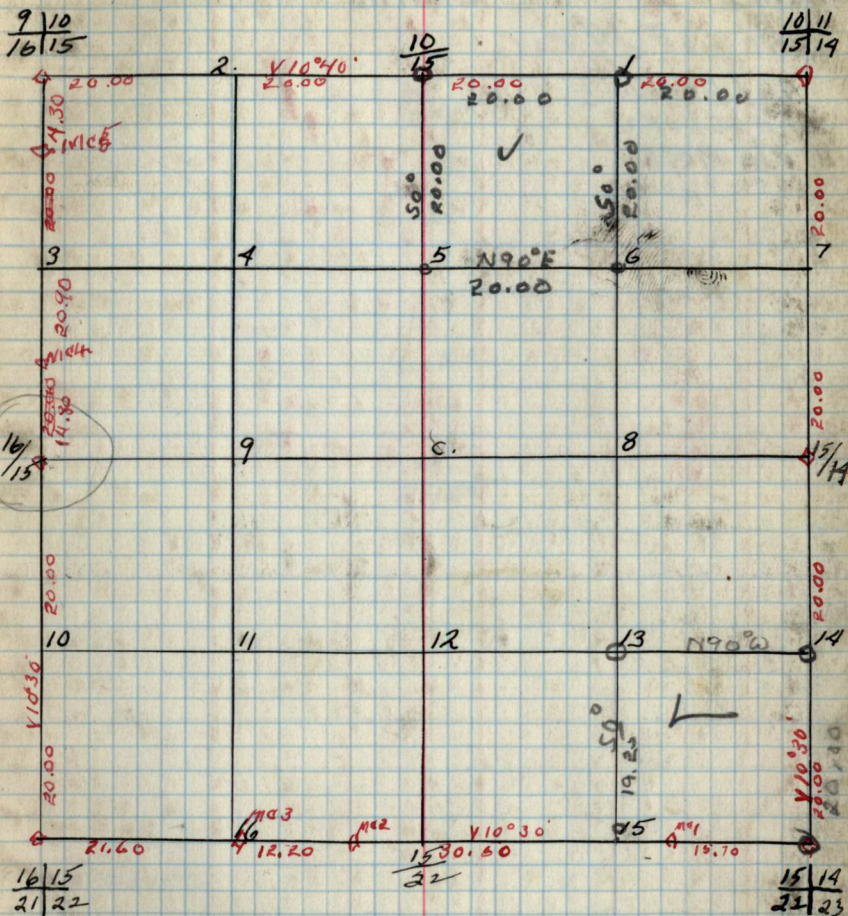
Original G.L.O. Corners

| COM. | SPEC. | D.b.h. | BEAR. | DIST. |
|-------|---------|--------|-------|-------|
| 10/11 | N. PINE | 17 | N35W | 34 |
| 15/14 | Balsam | 20 | S34E | 30 |
| 10/15 | W. PINE | 30 | S6W | 20 |
| 9/10 | N. PINE | 24 | N87W | 42 |
| 16/15 | Aspen | 7 | S3E | 14 |
| 16/15 | Cedar | 4 | N56W | 21 |
| 16/15 | Birch | 9 | S48W | 13 |
| 16/15 | Birch | 9 | S63E | 11 |
| 16/15 | Poplar | 4 | S52W | 15 |
| 21/22 | " | 4 | N43W | 24 |
| 15/22 | " | 5 | S10W | 1.28 |
| 15/19 | " | 5 | S22E | 79 |

| | | | | |
|-------|-------------|---|-------|------|
| 15/19 | N. PINE | 6 | N35E | 24 |
| 22/23 | Aspen | 6 | S34E | 18 |
| 15/14 | W. PINE | 5 | S28W | 66 |
| MC. 1 | Aspen | 4 | North | 2.63 |
| MC. 2 | B. of J. Lk | 4 | N87W | 2.67 |
| MC. 3 | Aspen | 4 | S85E | 1.60 |
| MC. 4 | B. of J. Lk | 4 | N7E | 65 |
| MC. 5 | Cedar | 4 | N38W | 17 |
| | | 4 | S34E | 20 |
| | | 4 | N75E | 28 |
| | | 4 | N86E | 5 |
| | | 4 | S66W | 11 |
| | | 4 | N20E | 14 |
| | | 4 | S82E | 14 |

B.T.'s Found & W.T.'s Set

| COM. | SPEC. | D.b.h. | BEAR. | DIST. | B.T. | W.T. |
|----------|-------|--------|-------|-------|------|------|
| 1/10 #13 | Aspen | 3" | N21W | .02 | wt | |
| 1/15 | Post | 6" | North | 44. | wt. | |
| 1/12 #6 | Aspen | 5 | S28E | 15 | wt | |

Sec. 15 T148N-R26W
by-

B.T.'s & W.T.'s (CONT.)

| COM. | SPEC. | D.b.h. | BEAR. | DIST. | B.T. | W.T. |
|------|-------|--------|-------|-------|------|------|
|------|-------|--------|-------|-------|------|------|

Notes

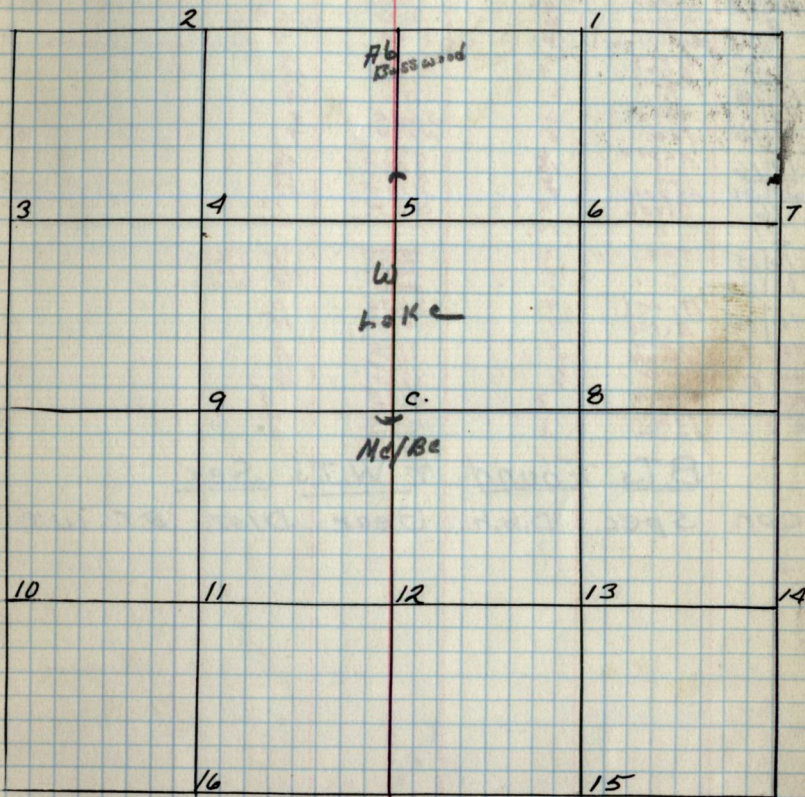
Chains

Chains

Lines of A cor

A6/Basswood
15 chs Lake
H1 chs Mc/B
78.11 chs 1/4 cor

Type & Cultural Map 16



Remarks:

17

Chains

Notes

Chains

Type & Cultural Map

17

| | | | | |
|----|----|----|----|----|
| | 2 | | 1 | |
| 3 | 4 | 5 | 6 | 7 |
| | 9 | c. | 8 | |
| 10 | 11 | 12 | 13 | 14 |
| | 16 | | 15 | |

REMARKS:

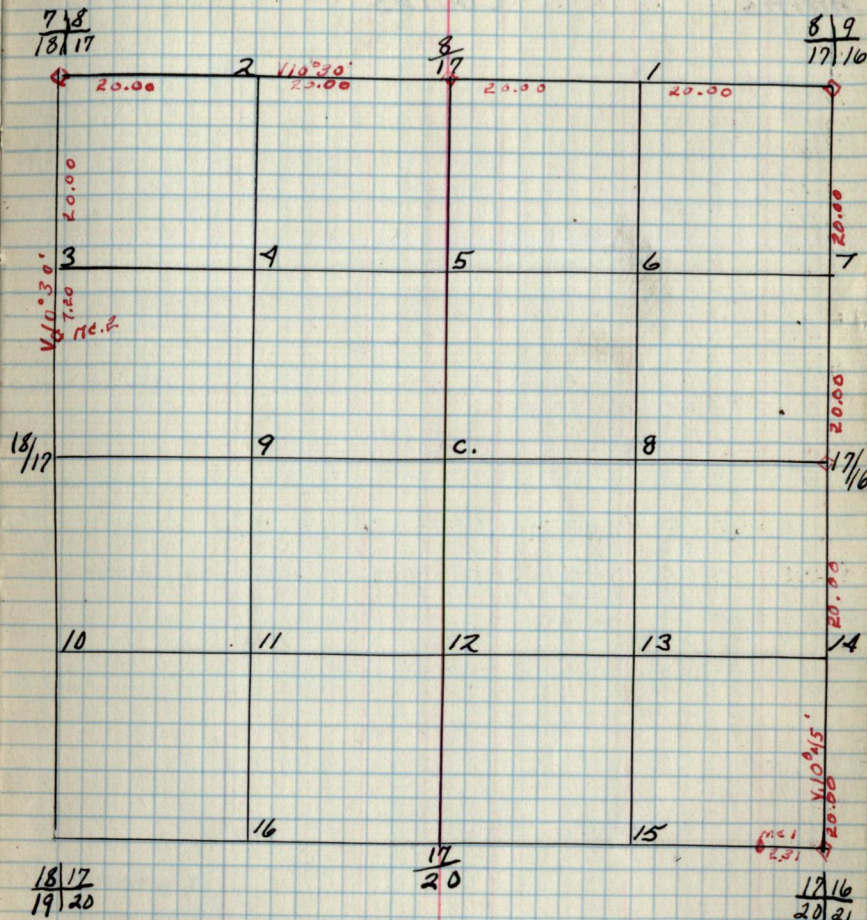
17 Original G.L.O. CORNERS

| Cor. | Spec. | D.b.h. | Bear. | DIST. |
|-------|-------|--------|-------|------------------------------|
| 8/19 | Aspen | 4 | N36W | 15 |
| 17/16 | Aspen | 6 | N36W | 17 |
| 8/17 | Aspen | 6 | N36W | 9 |
| 7/18 | to m. | 4 | S42E | 16 |
| 18/17 | Aspen | 6 | N74W | 15 |
| 18/17 | X | | S57E | 22 |
| 18/17 | X | | N33E | 21 |
| 18/17 | X | | S31W | 41 |
| 18/17 | X | | | |
| 18/17 | X | | | |
| 17/16 | Aspen | 6 | N40W | 7 |
| 21/21 | to m. | 8 | S52W | 25 |
| 21/21 | Aspen | 8 | S34E | 27 |
| 17/16 | Cedar | 6 | S62E | 8 |
| Mc1 | to m. | 8 | N74W | 9 |
| Mc1 | Cedar | 8 | S67E | 12 Spruce Marked for corner. |
| Mc1 | Aspen | 8 | N10 | |
| Mc.2 | Birch | 8 | N29W | 22 |
| Mc.2 | " | 8 | N9E | 22 |

B.T.'s Found & W.T.'s Set.

Cor. Spec. D.b.h. Bear. DIST. B.T. W.T.

Sec. 17 - T148N - R26W.
by-



B.T.'s & W.T.'s (CONT.)

Cor. Spec. D.b.h. Bear. DIST. B.T. W.T.

181

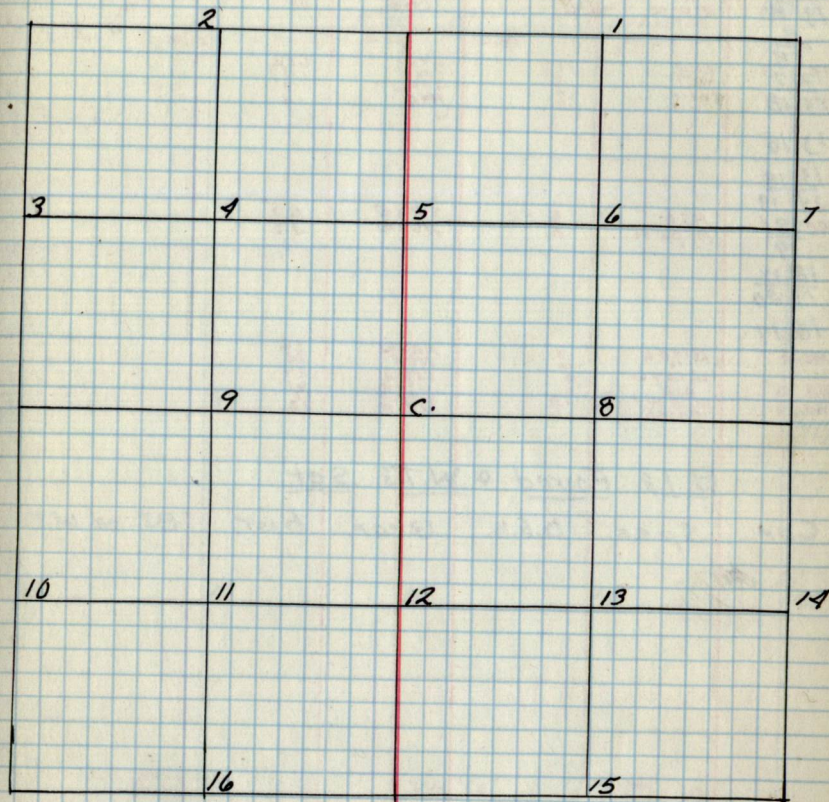
Chains

Notes

Chains

Type & Cultural Map

182



Remarks:

18

Original G.L.O. Corners

| Cor. | Spec. | D.b.h. | Bear. | DIST. | B.T. | W.T. |
|---------|---------|--------|-------|-------|------|------|
| 9/18 | Tam. | 8 | N12W | 10 | | |
| 18/17 | " | 4 | S57E | 22 | | |
| 7/18 | ASPEN | 6 | N53E | 21 | | |
| MF2/23 | ELM | 18 | WEST | 1.22 | | |
| 11/3/18 | Cedar | 8 | S57W | 1.47 | | |
| 13/18 | " | 6 | S8W | 3 | | |
| 13/18 | | | N4E | 4 | | |
| 24/19 | | | | | | |
| MC18/19 | ASH | 6 | S28E | 4.5 | | |
| 19 | ASPEN | 5 | N66W | 18 | | |
| 18/17 | | | | | | |
| 19/20 | | | | | | |
| 18/17 | | | | | | |
| MC.2 | Birch | 8 | N29W | 3.2 | | |
| | " | 6 | N9E | 2.2 | | |
| MC.5 | WILLOW | 4 | S59W | 2.4 | | |
| MC.6 | ASH | 4 | N74W | 1.7 | | |
| | W. PINE | 12 | S50E | 1.1 | | |
| | Birch | 7 | N70E | 2.2 | | |

B.T.'s Found & W.T.'s Set

| Cor. | Spec. | D.b.h. | Bear. | DIST. | B.T. | OR. W.T. |
|------|-------|--------|-------|-------|------|----------|
|------|-------|--------|-------|-------|------|----------|

Sec. 18 T148N - R26W
by -

18



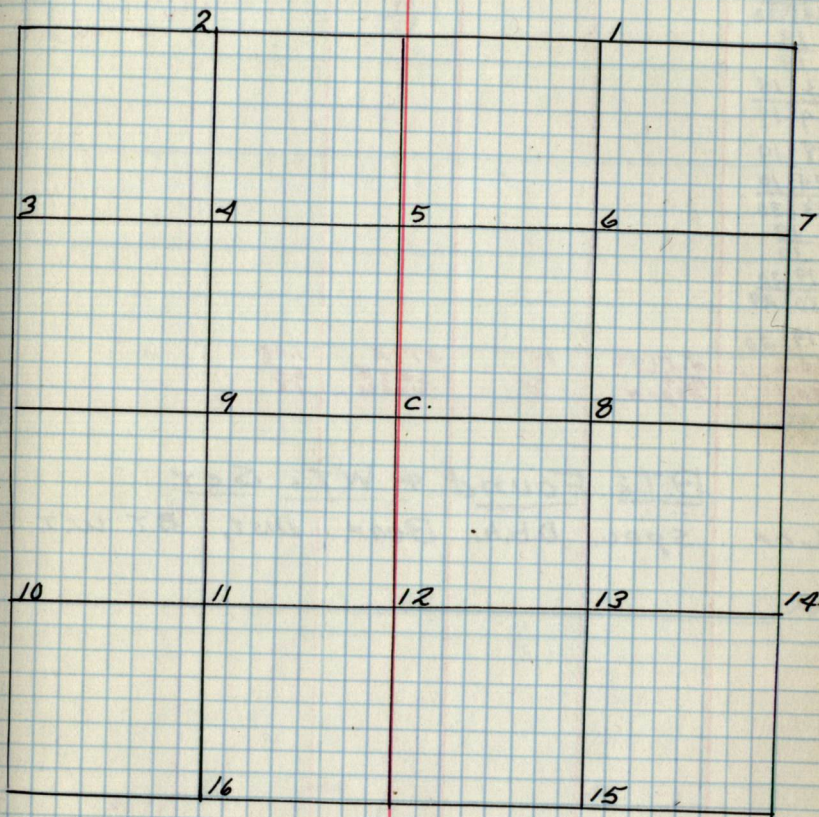
B.T.'s & W.T.'s (CONT.)

| Cor. | Spec. | D.b.h. | Bear. | DIST. | B.T. | W.T. |
|------|-------|--------|-------|-------|------|------|
|------|-------|--------|-------|-------|------|------|

Chains

Notes

Chains



119

Original G.L.O. Corners

Cor. Spec. D.b.h. Beam. DIST.

18/17
19/2018
19

13/18

29/19

29/19

29/19

25/30

19

30

19/20

30/29

19/20

M.C. 2

N. PINN.

15

SITE

1.08

M.C. 1

ASPN

5

SITE

4.5

ASPN

5

N66W

18

B.T.'s Found & W.T.'s Set.

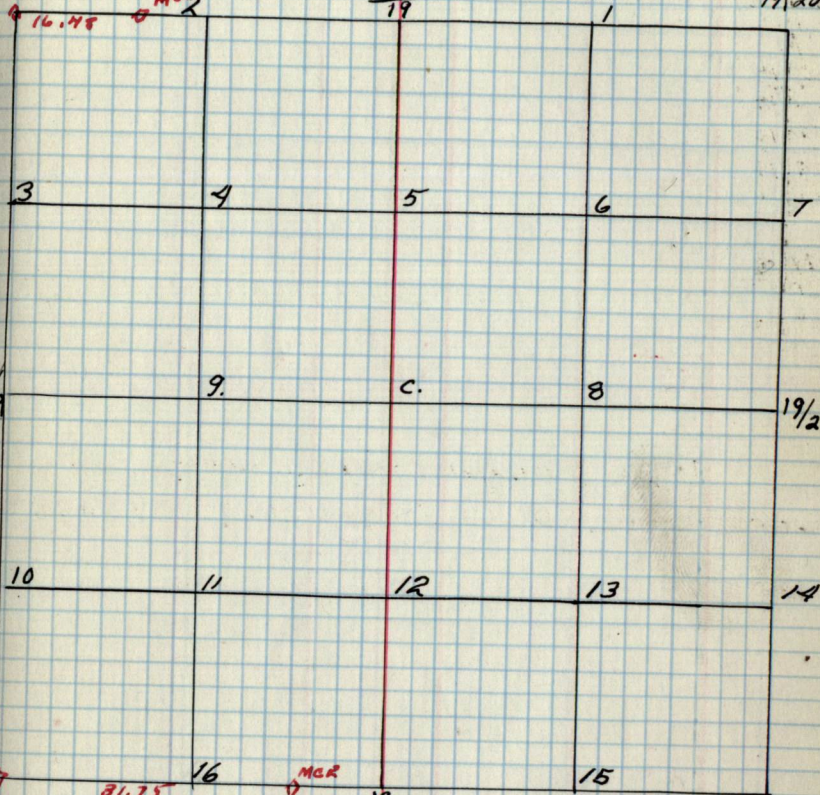
Cor. Spec. D.b.h. Beam. DIST. B.T. W.T.

Sec. 19 T148N-R26W.

by -

13/18
29/19

M.C. 2

18
1918/17
19/20

29/19

9.

c.

8

19/20

10

11

12

13

14

29/19
25/30

21.75

16

M.C. 2

19
30

15

19/20
30/29B.T.'s & W.T.'s (CONT.)

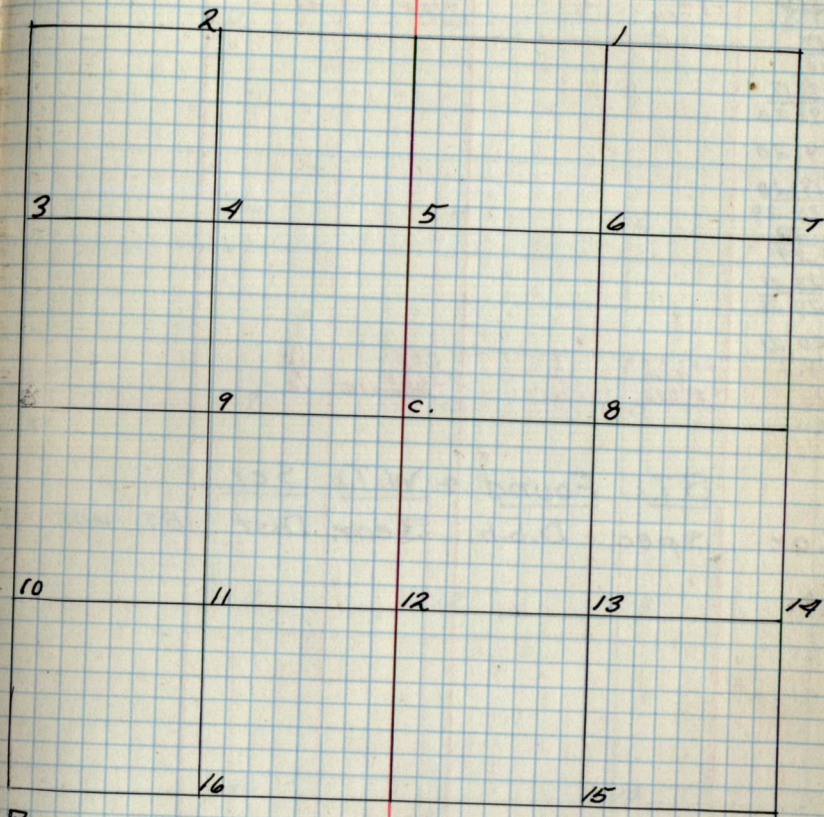
Cor. Spec. D.b.h. Beam. DIST. B.T. W.T.

20
Chains

Notes

Chains

20
Type & Cultural Map



Remarks:

20

Original G.L.O. Corners

| Cor. | Spec. | D.b.h. | Bear. | DIST. |
|-------|--------------|--------|----------------------|-------|
| 17/16 | Aspen | 16 | N45W | 42 |
| 20/21 | Lam Aspen | 8 | S35W S35E N70E | 47 |

17
2018/17
19/20

19/20

19/20
30/2920
2920/21
29/28

20/21

M.C. 2

M.C. 1

SP 000
Tom
Cedar
Aspen8
4
6N5W
S19E
S67E
N75E15
25
7
12

B.T.'s Found & W.T.'s Set.

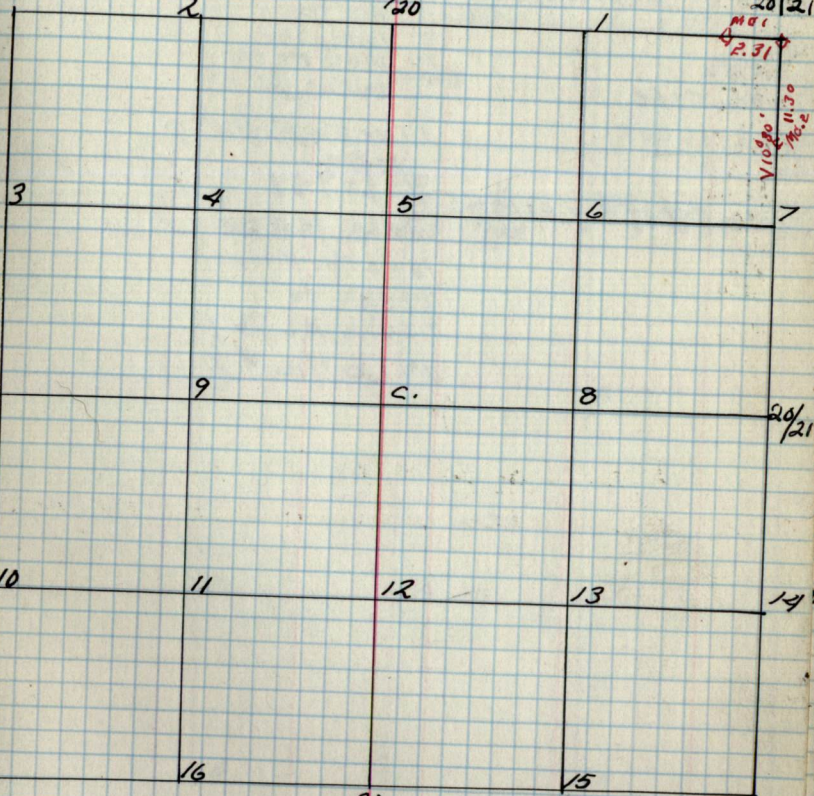
| Cor. | Spec. | D.b.h. | Bear. | DIST. | B.T. | W.T. |
|------|-------|--------|-------|-------|------|------|
|------|-------|--------|-------|-------|------|------|

Sec. 20 T148N-R26W
by -

20

18/17
19/20

17/20

17/16
20/2119/20
30/2920
2920/21
29/28

B.T.'s & W.T.'s (CONT.)

| Cor. | Spec. | D.b.h. | Bear. | DIST. | B.T. | W.T. |
|------|-------|--------|-------|-------|------|------|
|------|-------|--------|-------|-------|------|------|

Notes

Chaitis

LINE OF 1/4 Cor Bot Sec.
107AMCB
26 chs TCRC
39.62 chs Cor

LINE S. Bot Sec 21/22

Chaitis

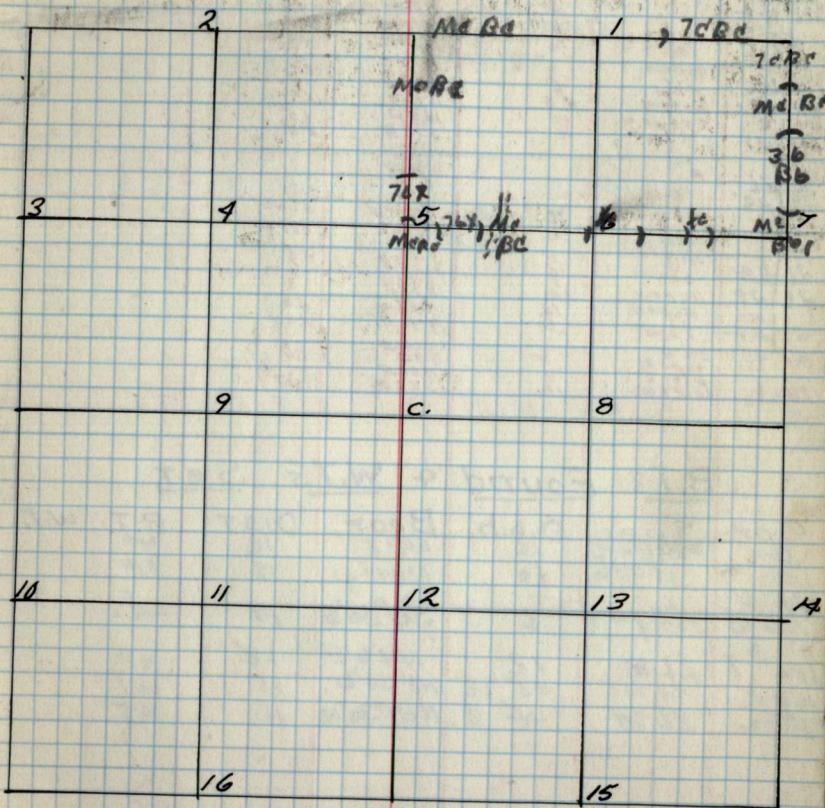
LINE OF 1/4 Cor

MCB
16 chs 76x
19 chs MCB
20 chs 1/16 #5

LINE OF 1/16 #5

MCB
30 chs 76x
7 chs MCB
10.50 chs Fireway
29 chs 7e
33 chs MCB
39.60 1/16 #7

Type 4 Cultural Map



Remarks:

22

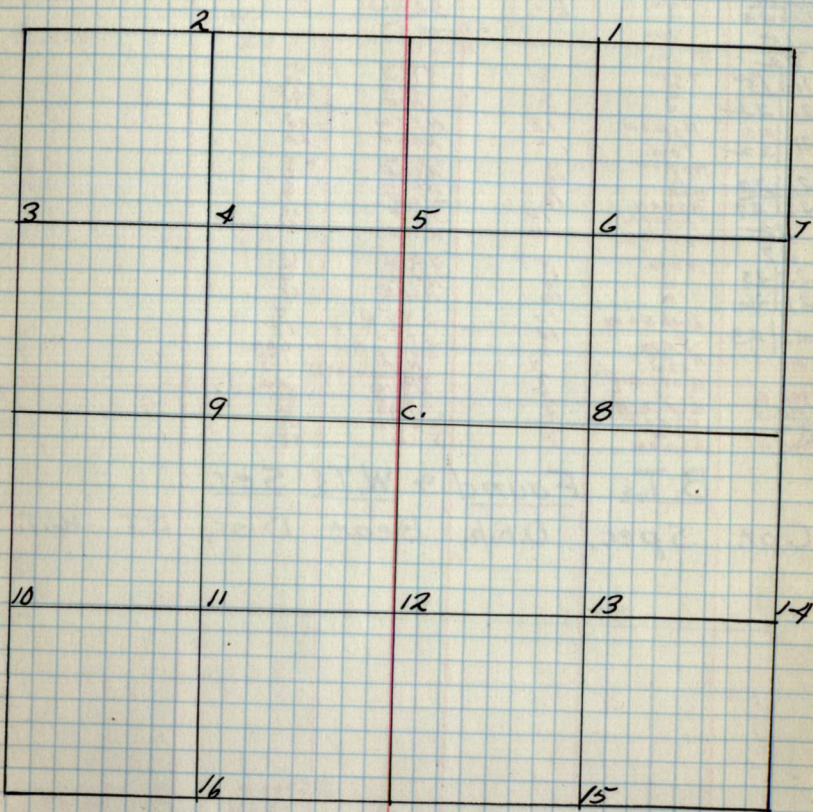
Chains

Notes

Chains

Type & Cultural Map

23



Remarks:

Chains

LINE S OF 1/4 COR

A6

8chs SWP

LINE E OF 1/4 #4

A6

14chs SWP 4/276

20.15chs 1/16 #5

LINE E OF W. 1/4 COR.

A66

20.05chs 1/16 #9

LINE W OF 1/16 #8

A6

14chs A61

20chs A6A

LINE N OF 1/4 COR

A61

20chs 76 13

4chs 76 B6

9chs Fireway

17chs 76

20chs 1/16 #5

LINE E OF 1/2 SEC 26

76 115

9chs A636

14chs A615

16chs A6-1

20chs 1/16 #16

Chains

LINE S OF 1/16 #2

A6

14chs A615

17chs A61

20chs 1/16 #4

LINE N OF 1/16 #9

A6

10chs SWP 46

14chs 76

20.08chs 1/16 #4

cor. 16 LKS E OF LINE

LINE W OF 1/16 #4

A6

6chs 76X

11chs A6

20chs 1/16 #3

LINE W OF 1/16 #13

A6

130chs 76X

20chs 1/16 #12

LINE S OF 1/16 #12

76X

30chs B6A6

20chs 14ch.

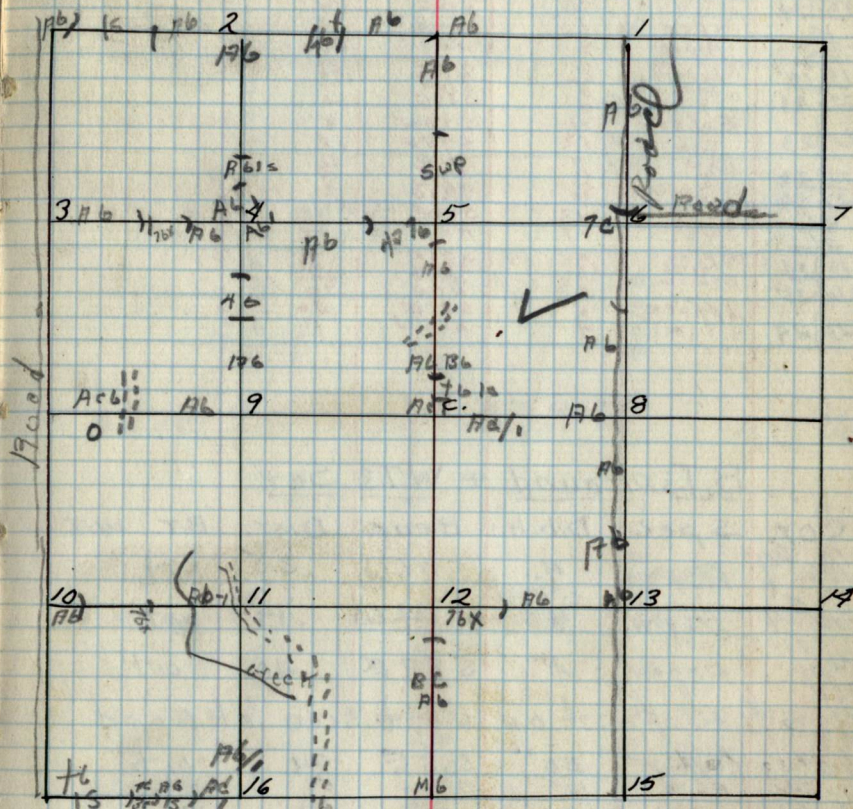
LINE N OF 1/16 #16

A61

14chs SWP

20chs 1/16 #11

Type & Cultural Map



REMARKS:

1/16 #2 IS AN IRON PIPE DRIVEN IN GROUND

LINE W OF 1/16 #11

A61

3chs SWP-K

9chs 76X

16chs A6 #10

20chs 1/16 #10

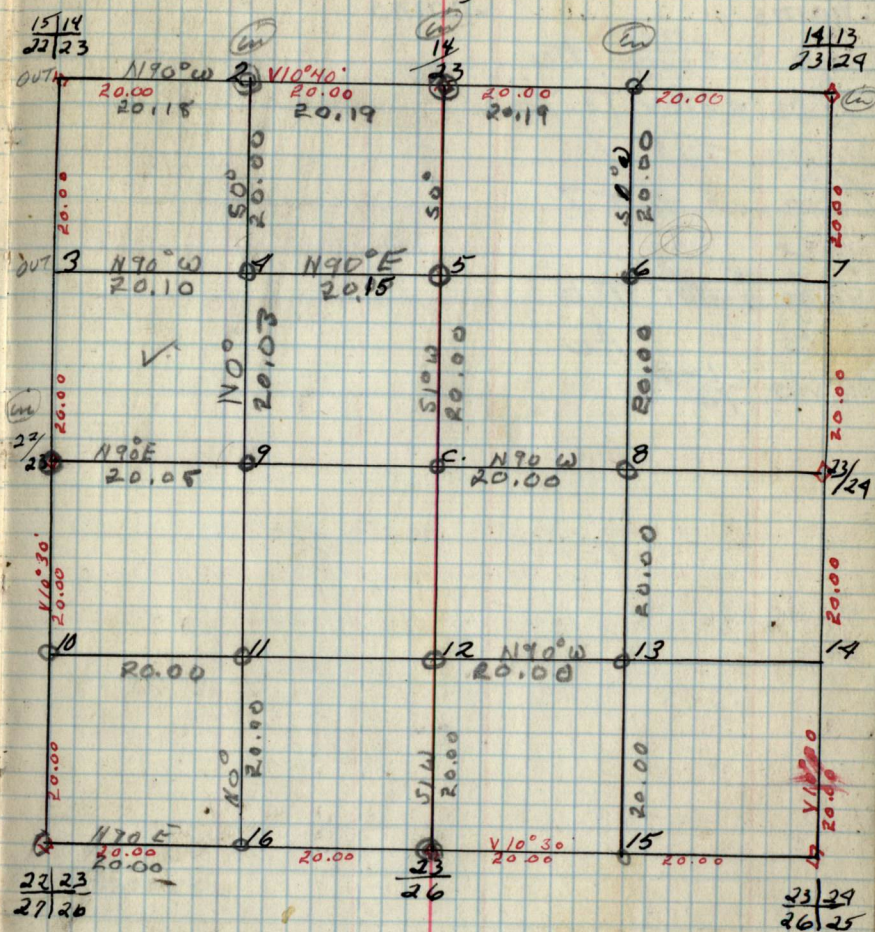
23 Original G.L.O. Corners.

| Cor. | Spec. | D.b.h. | Bear. | DIST. |
|-------|-----------|--------|---------|-------|
| 19 13 | fam | 6.5 | N 25° E | 17 |
| 23 29 | w. pine | 8 | S 81° W | 41 |
| 19 | " " | 8 | N 79° W | 54 |
| 23 | Aspen | 6 | N 40° W | 32 |
| 15 14 | Birch | 8 | S 25° E | 27 |
| 22 23 | N. spruce | 6 | N 43° E | 34 |
| 22 | fam. | 6 | N 53° W | 35 |
| 22 23 | Balsam | 6 | S 7° W | 66 |
| 23 23 | fam. | 10 | S 50° W | 4 |
| 27 26 | " " | 12 | S 75° E | 17 |
| 23 | " " | 9 | S 11° W | 12 |
| 26 | " " | 10 | S 25° E | 16 |
| 23 | fam. | 10 | N 25° W | 4 |
| 26 | Spruce | 12 | S 86° E | 21 |
| 23 24 | " " | 7 | N 57° E | 11 |
| 26 25 | w. pine | 6 | S 38° E | 9 |
| 23 24 | Birch | 12 | S 66° W | 29 |
| 26 25 | Balsam | 12 | N 42° E | 24 |
| 23 24 | " " | 6 | N 17° W | 30 |
| 26 25 | Spruce | 5 | S 81° E | 36 |
| 23 24 | fam. | 4 | N 65° W | 11 |

B.T.s Found + W.T.s Set.

| Cor. | Spec. | D.b.h. | Bear. | DIST. | B.T. | W.T. |
|----------|-----------|--------|---------|-------|------|----------------------|
| 1/16 #9 | Aspen | 4" | S 86° W | .35 | | wt. |
| 1/16 #4 | N. Spruce | 4" | S 74° W | .19 | | wt. |
| 1/16 #13 | Aspen | 4" | S 83° E | .40 | | wt. |
| 1/16 #13 | Cedar | 20" | S 65° E | .24 | | wt. |
| 1/16 #23 | ELM | 12" | N 8° W | .54 | | pt. |
| 1/16 #26 | ELM | 12" | N 33° E | .56 | | pt. wt. |
| 23 23 | Poster | | | | | on W. side of Road |
| 23 26 | Poster | | | | | on W. side of Road |
| 1/16 #11 | Poster | | | | | on west side of R.W. |
| 1/16 #10 | Poster | | | | | on E side of Road |

Sec. 23 T148N-R26W



B.T.s + W.T.s (CONT.)

| Cor. | Spec. | D.b.h. | Bear. | DIST. | B.T. | W.T. |
|------|-------|--------|-------|-------|------|------|
|------|-------|--------|-------|-------|------|------|

LINE BOT. 1/16 #12 AND S 1/4 COR 15 TO LKS EAST OF 1/4 COR

28

Notes

Chains

Line of $\frac{13}{18}$ to

10chs enter to Tb

20chs $\frac{1}{10}$ #7Line of $\frac{1}{16}$ #7

to

8chs enter to b

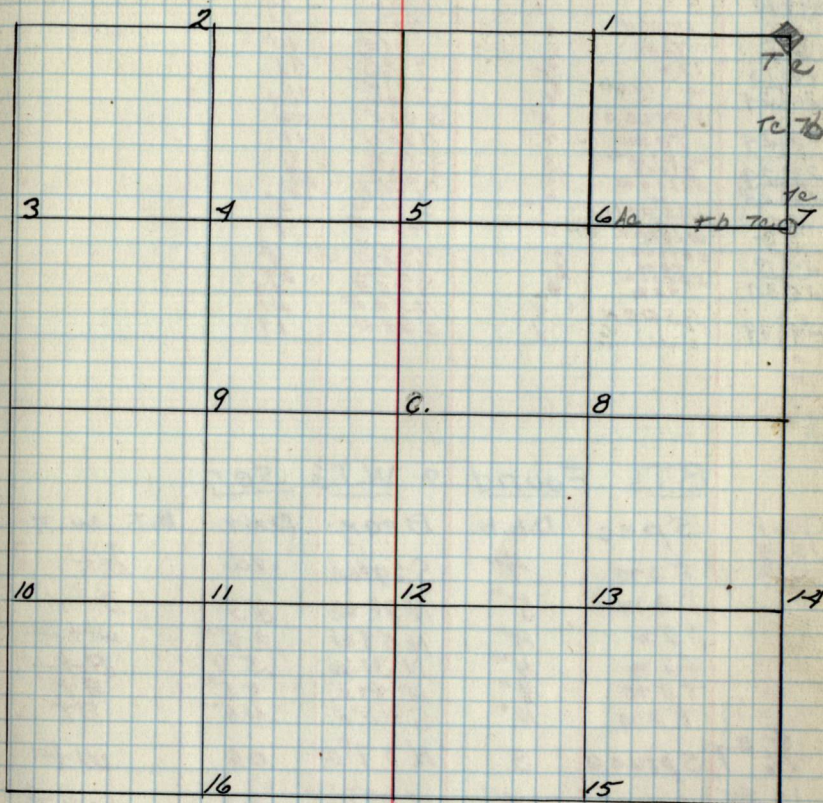
19chs " Ac

20chs $\frac{1}{16}$ #6

Chains

Type & Cultural Map

29



Remarks;

25

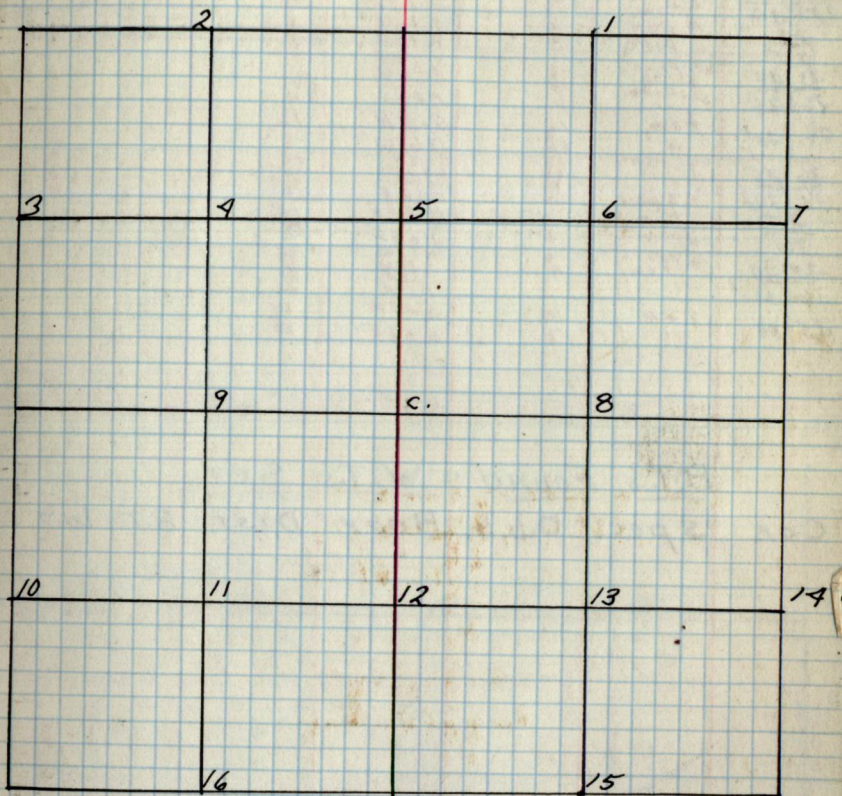
Chairs

Notes

Chairs

Type + Cultural Map

25



Remarks:

Chains

Line S of H Oct.

76
19.50 chs 1/10 #5

Line W of 1/10 #5

76
Schults RB
8.00 chs trail N.S.
20 chs 1/10 #4

Line S of F 1/10 #1

AC
10 chs 76
8 chs
10 chs 76/106
20 chs 1/10 #4

Line W of F 1/10 #8

AC
4 chs AB
5 chs AB 36
10 chs 72
16 chs AB
19.5 chs 46
20 chs 1/4

Chains

Line E of 1/10 #5

76
Swamp Spruce 6 chs
Willow brush 14 chs
20 chs

Line S of F 1/10 #9

76/106
7 chs trail N.W. SE
16 chs 0
20 chs 1/10 #11

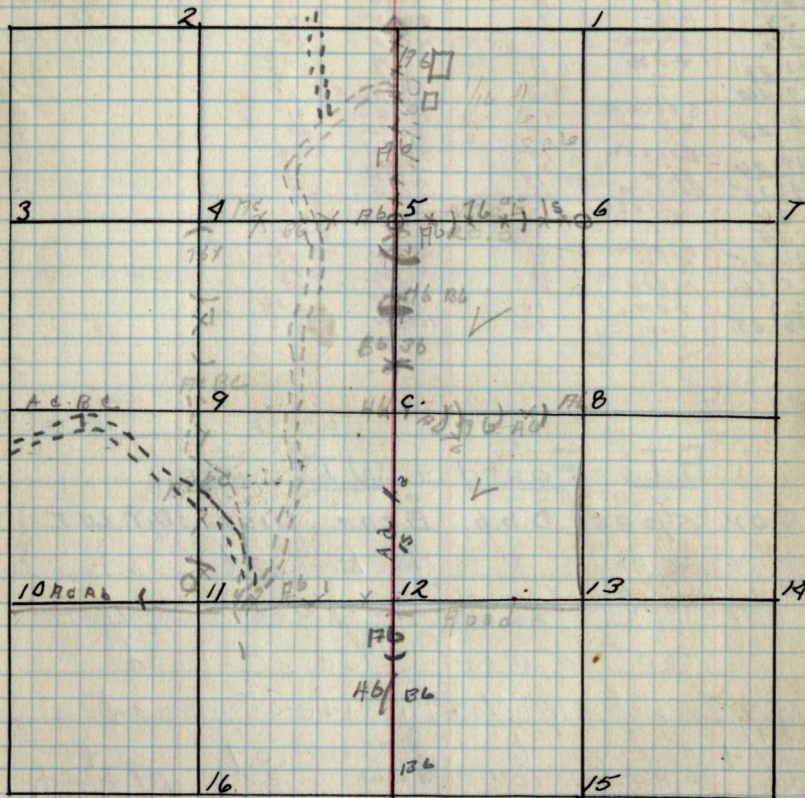
Line N of F 1/4

1/6
5 chs 86 36
12 chs 46 86
16 chs 86 86 36
20 chs 1/10 #5

Line S of F 1/10 #12

76
6 chs 46/106
20.10 chs 1/4 Cor.

Type & Cultural Map



Remarks:

28 Original G.L.O. Corners

| Cor. | Spec | D.b.h. | Bear. | DIST. |
|-------|---------|--------|-------|-------|
| 23/24 | w. pine | 6" | 380E | 8 |
| 26/25 | Balsom | 14" | N42E | 24 |
| 23 | fam. | 16" | N79W | 30 |
| 26 | spruce | 12 | 380E | 11 |
| 22/23 | fam. | 7 | N57E | 18 |
| 27/26 | spruce | 9 | S21W | 12 |
| 27/26 | spruce | 10 | S25E | 14 |
| 27/26 | N. pine | 12 | N20E | 21 |
| 27/26 | N. pine | 18 | N42W | 11 |
| 27/26 | Balsom | 14 | S59E | 24 |
| 34/35 | Balsom | 12 | S53W | 16 |
| 26 | spruce | 9 | N21W | 9 |
| 35 | " | 9 | N32E | 7 |
| 26/25 | w. pine | 18 | S81E | 33 |
| 35/36 | N. pine | 18 | N16W | 7 |
| 26/25 | Aspen | 12 | S46W | 26 |
| | fam. | 12 | S86W | 16 |

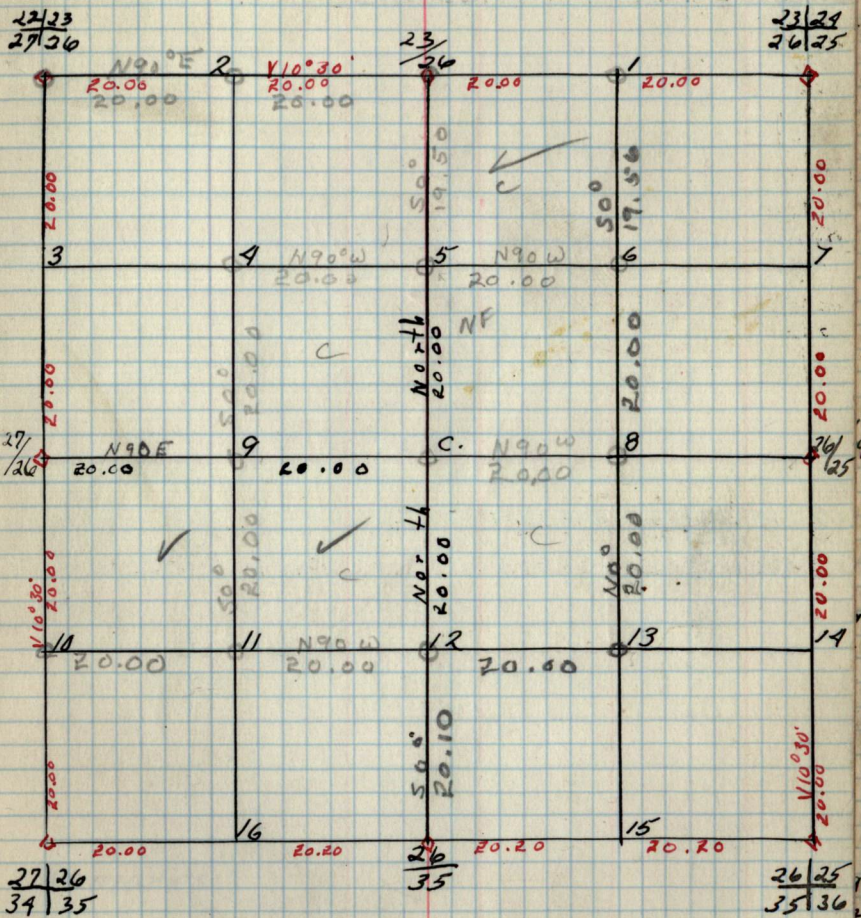
B.T.'s Found & W.T.'s Set.

Cor. Spec. D.b.h. Bear. DIST. B.T. W.T.

| | | | | | |
|-------|--------------|-----------------|------|-----|--------------|
| 1/4" | Aspen | 7" | N68E | .04 | wt |
| 1/4" | Post 25 like | N. of Cor. | | | Cor. in Road |
| 1/4" | Post | on west side | | | of Road |
| 1/4" | Post | on North's side | | | of Road |
| C/4 | cedar | 6" | S56W | .09 | wt |
| 26/35 | w. pine | 10" | S5W | .27 | B.T. + wt |
| 1/4" | ELM | 6" | N65W | .30 | B.T. + wt. |
| 1/4" | SPRUCE | 12" | S05W | .34 | B.T. wt. |

Sec. 26 T148N-R26W.

28



B.T.'s & W.T.'s (CONT.)

Cor. Spec. D.b.h. Bear. DIST. B.T. W.T.

27

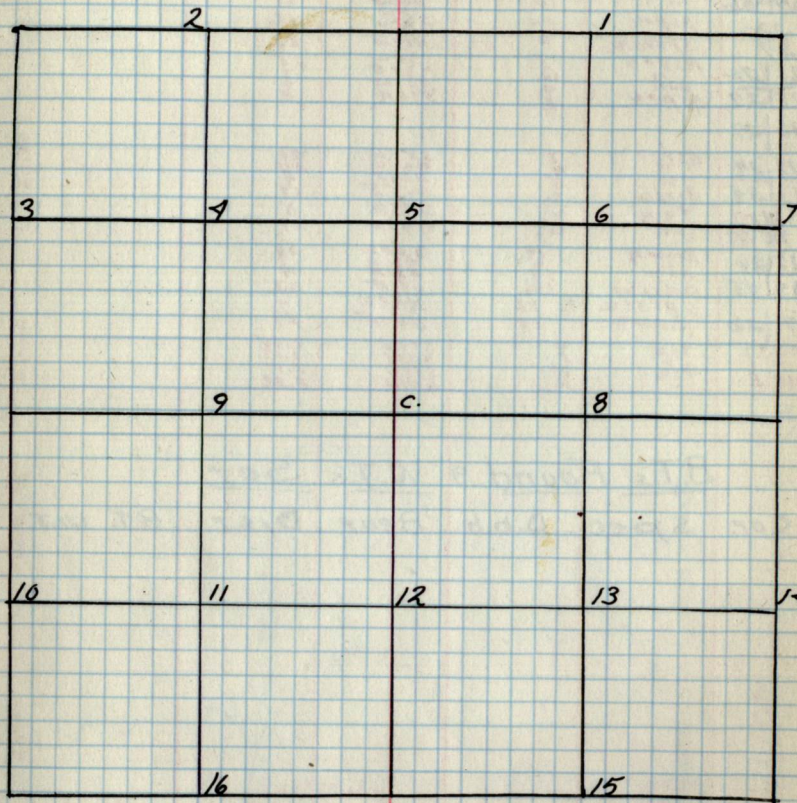
Notes

Chairs

Chairs

Type & Cultural Map

27

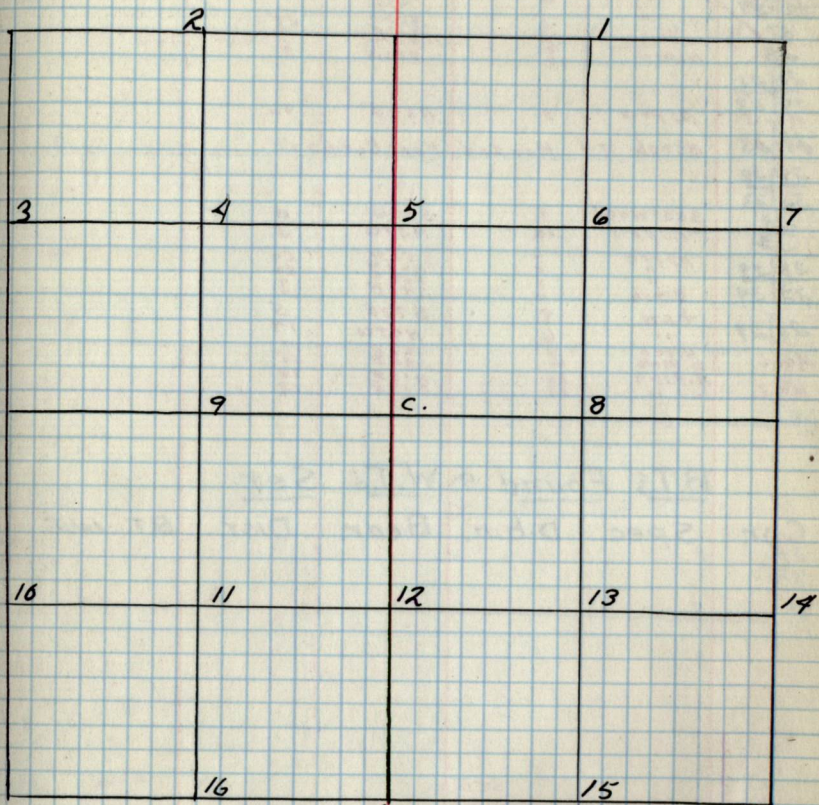


Remarks:

Notes

Chains

Chains

Type & Cultural Map

Remarks:

28 Original G.L.O. Corners

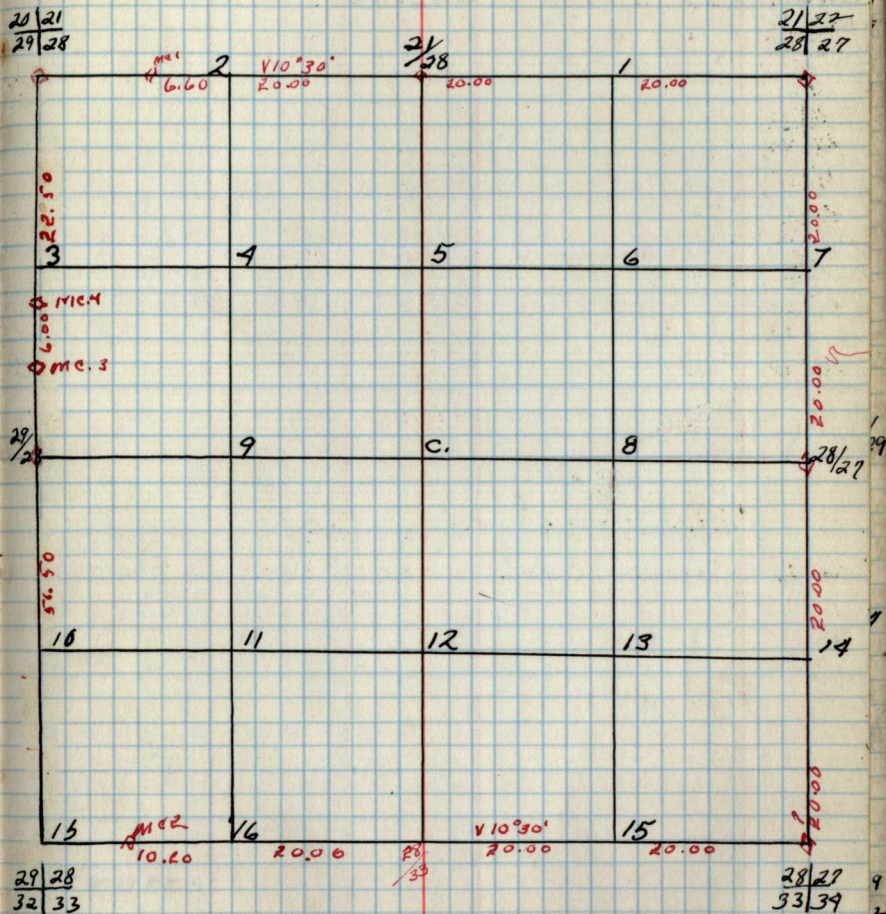
| Cor. | Spec. | D.b.h. | Bear. | Dist. |
|-------|----------------------------|--------|-------|-------|
| 21/27 | ASpen | 6 | N87W | 5.00 |
| 28/29 | " | 6 | S87W | 5.10 |
| 21/28 | ASpen | 5 | N50W | 25 |
| 28 | oak | 12 | N30E | 7 |
| 28 | ASpen | 12 | N70E | 7 |
| 20/21 | | | | |
| 29/28 | ASpen | 5 | N5E | 16 |
| 28/28 | Bitch 7" Marked For Corner | | | |
| 29/28 | | | | |
| 32/33 | Basswood | 8 | S60W | 11 |
| 28 | ASpen | 12 | N87W | 3 |
| 33 | | | | |
| 28/29 | ASpen | 7 | S55W | 20 |
| 32/34 | " | 4 | N65E | 20 |
| 32/34 | Birch | 6 | S45E | 12 |
| 28/28 | oak | 8 | S7E | 5 |
| | " | 6 | N47W | 17 |
| Mc. 1 | Birch | 12 | N3E | 17 |
| | W. PINE | 20 | S22E | 25 |
| Mc. 2 | N. PINE | 20 | N13E | 70 |
| | " | 20 | S15E | 18 |

B.T.s Found & W.T.s Set.

| Cor. | Spec. | D.b.h. | Bear. | Dist. | B.T. | W.T. |
|-------|-------|--------|-------|-------|------|------|
| 21/27 | | | | | | |
| 28/29 | | | | | | |

Sec. 28 T148N-R26W.
by -

28



B.T.s & W.T.s (CONT.)

| Cor. | Spec. | D.b.h. | Bear. | Dist. | B.T. | W.T. |
|-------|-------|--------|-------|-------|------|------|
| 29/28 | | | | | | |
| 32/33 | | | | | | |

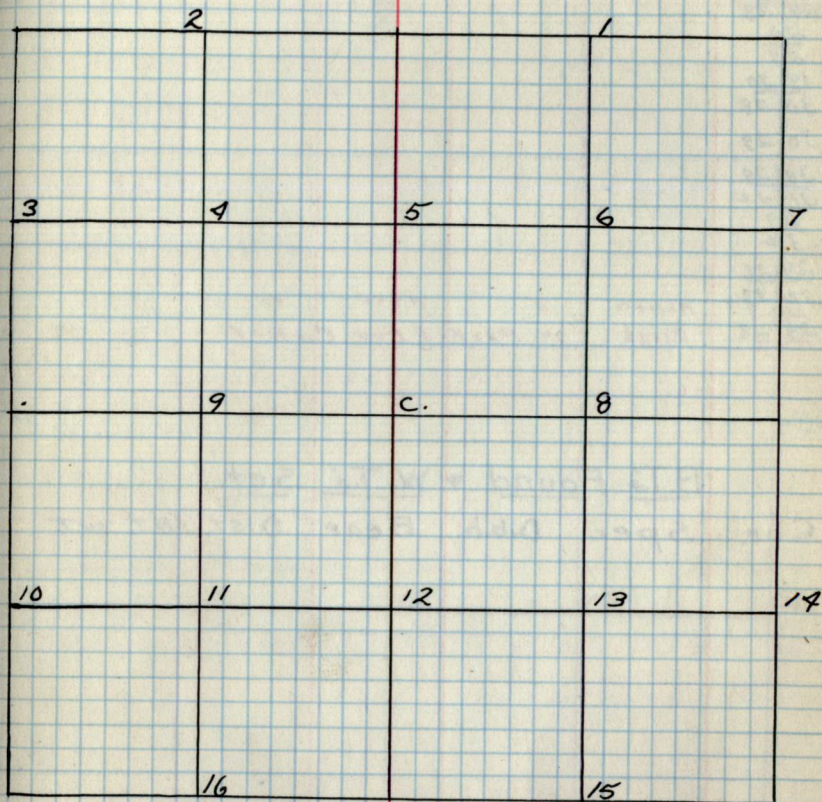
29
Chains.

Notes

Chains

Type & Cultural Map

29



Remarks:

29 Original G.L.O. Corners

Cor. Spec. D.b.h. Bear DIST.

20|21

29|28

20

29

19|20

30|29

30|29

30|29

31|32

29

32

29|29

32|33

Mc. 3

Mc 28

Aspen 5 N84E 16
Birch 7" Marked For Corner

B.T.'s Found & W.T.'s Set.

Cor. Spec. D.b.h. Bear DIST. B.T. W.T.

Sec. 29 T148N-R26W

by -

29

19|20

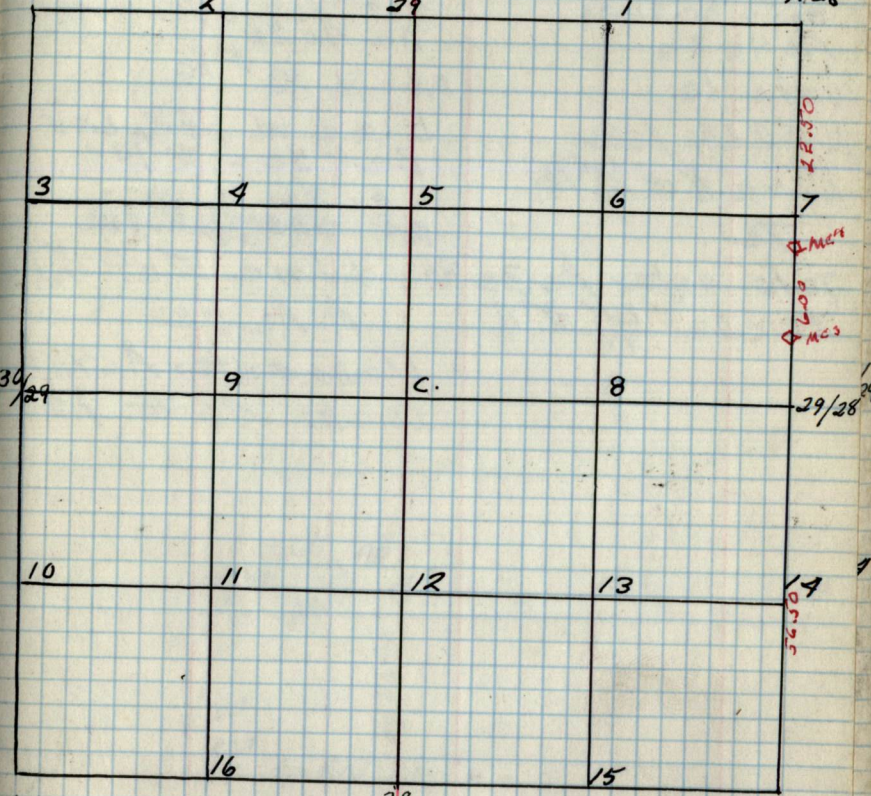
30|29

20

29

20|21

29|28



30|29

31|32

29

32

29|28

32|33

B.T.'s & W.T.'s (CONT.)

Cor. Spec. D.b.h. Bear. DIST. B.T. W.T.

Chains

Line E of $\frac{1}{4}$ Cor.
Bet sec 21/30
Ac 46 36.

6 chs 15.

10.50 chs 1/2

Line N of $\frac{1}{4}$ #16

7c

7 chs enter Ac 30 Bb

20 chs $\frac{1}{6}$ #11

Chains

Line N of $\frac{1}{4}$ Cor
Bet. sec 31/30
Ac 46 36

20 chs $\frac{1}{6}$ #12

Line W of $\frac{1}{4}$ Cor
Bet sec 31/30

Ac Bc
20 chs $\frac{1}{6}$ #16

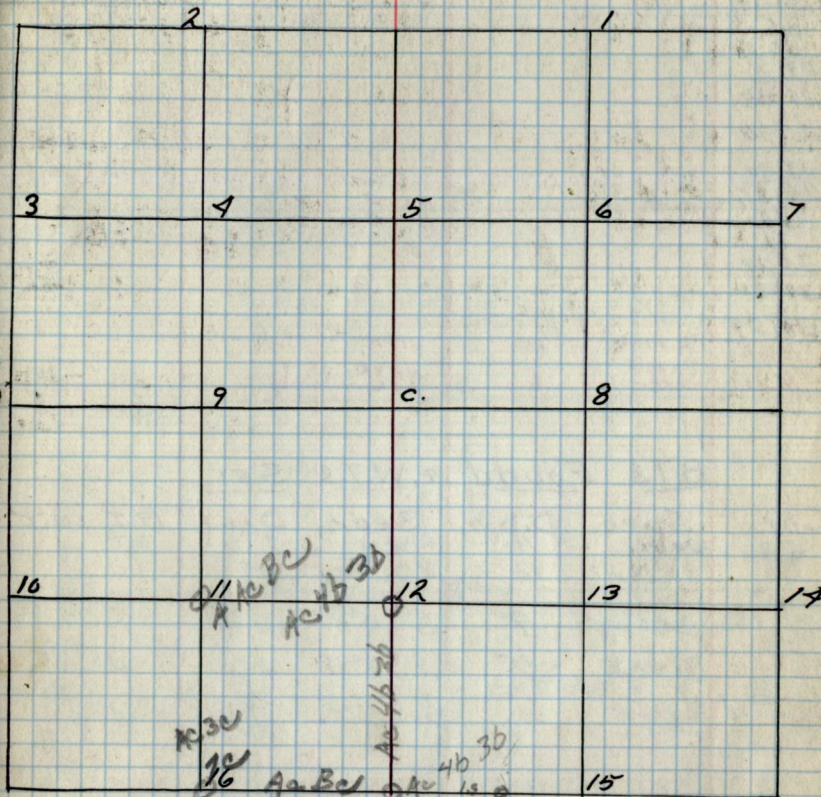
Line E of $\frac{1}{4}$ #11

A Ac Bc

11 chs enter Ac 46 36

20 chs $\frac{1}{6}$ #12

Type & Cultural Map



Remarks:

30 Original G.L.O. Corners

Cor. Spec. D.b.h. Bear. DIST. B.T. W.T.

19|20

30|29

19

30

24|19

25|30

25|30

25|30

25|30

36|31

30

31

Cedar
Pines to 6

6
18

N 85° E
N 89° E

45
38

30|29

31|32

30|29

M.C. 2

N. Pine

15

S 7° E

1.08

M.C. 1

Cedar

4

N 49° W
S 76°

43
1.88

B.T.'s Found & W.T.'s Set.

Cor. Spec. D.b.h. Bear. DIST. B.T. W.T.

30

Cedar

4

S 160° W

.07

31

Cedar

3

N 31° E

.06

1/16 #12

Cedar

9"

S 60° W

.04

1/16 #16

Birch

4"

S 34° E

.12

1/16 #11

Lynn

6"

N 68° E

.21

Sec. 30 T148N-R26W
by-

30

29|19

25|30

19|20

30|29

25|30

30|29

25|30

30|29

25|30

30|29

25|30

30|29

25|30

30|29

25|30

30|29

25|30

30|29

25|30

30|29

25|30

30|29

25|30

30|29

25|30

30|29

25|30

30|29

25|30

30|29

25|30

30|29

25|30

30|29

25|30

30|29

25|30

30|29

25|30

30|29

25|30

30|29

25|30

30|29

25|30

30|29

25|30

30|29

25|30

30|29

25|30

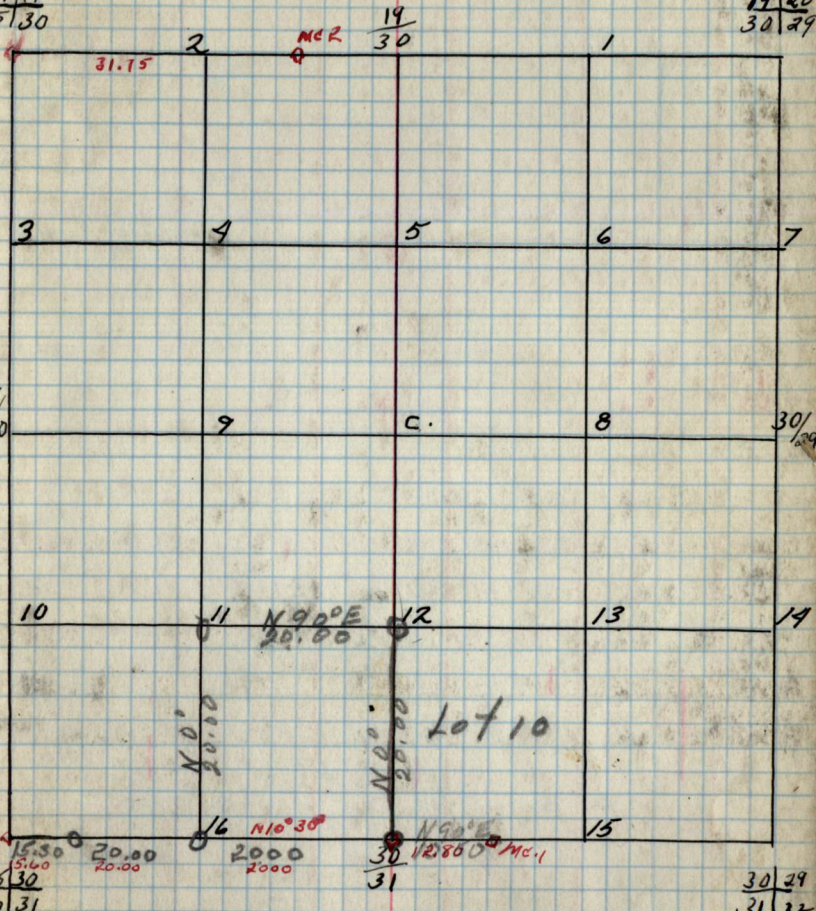
30|29

25|30

30|29

25|30

30|29



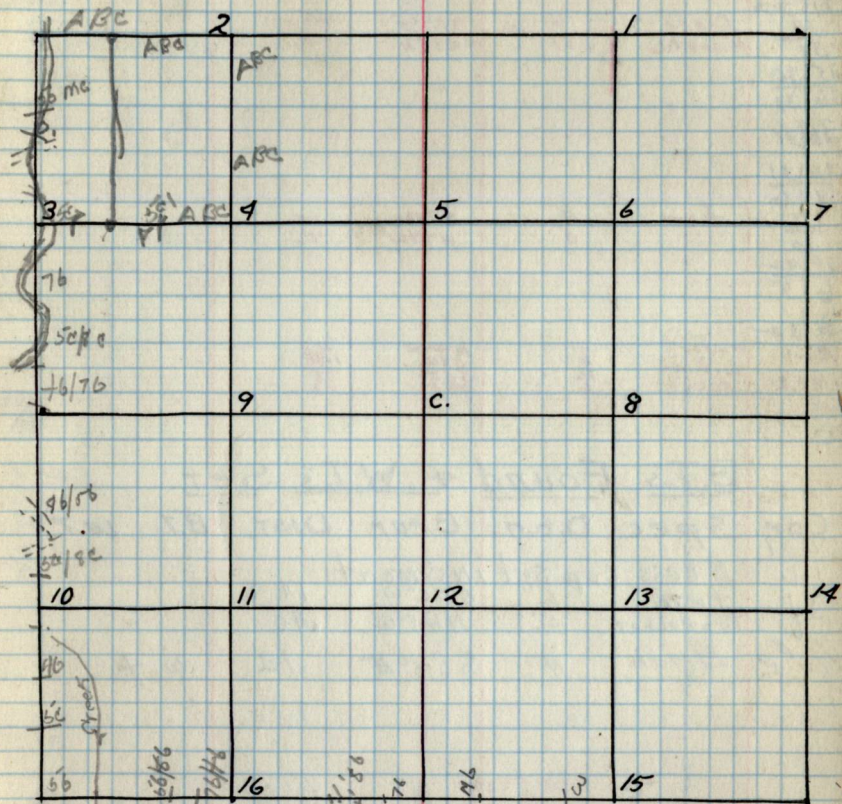
B.T.'s & W.T.'s (CONT.)
Cor. Spec. D.b.h. Bear. DIST. B.T. W.T.

NOTES

Chairs

Chairs

Type & Cultural Map



REMARKS:

31 Original G.L.O. Corners

Cor. Spec. D.b.h. Bear. DIST.

30/29
31/32
30
31
Cedar 6 N25E 45
Pine stub 13 N38E 38

25/30
30/31

26/31

36/31
1/6

3/6
6
tam 4/5 STOW 14
N44W 40

31/32
6/5

31/32

MC.1 Cedar 5 N44W 43
w. PINE 16 570 188
MC.2 ASPEN 6 SSE 78
N4E 33

B.T.'s Found & W.T.'s Set

Cor. Spec. D.b.h. Bear. DIST. B.T. W.T.

36/31 Brass cap set in cement

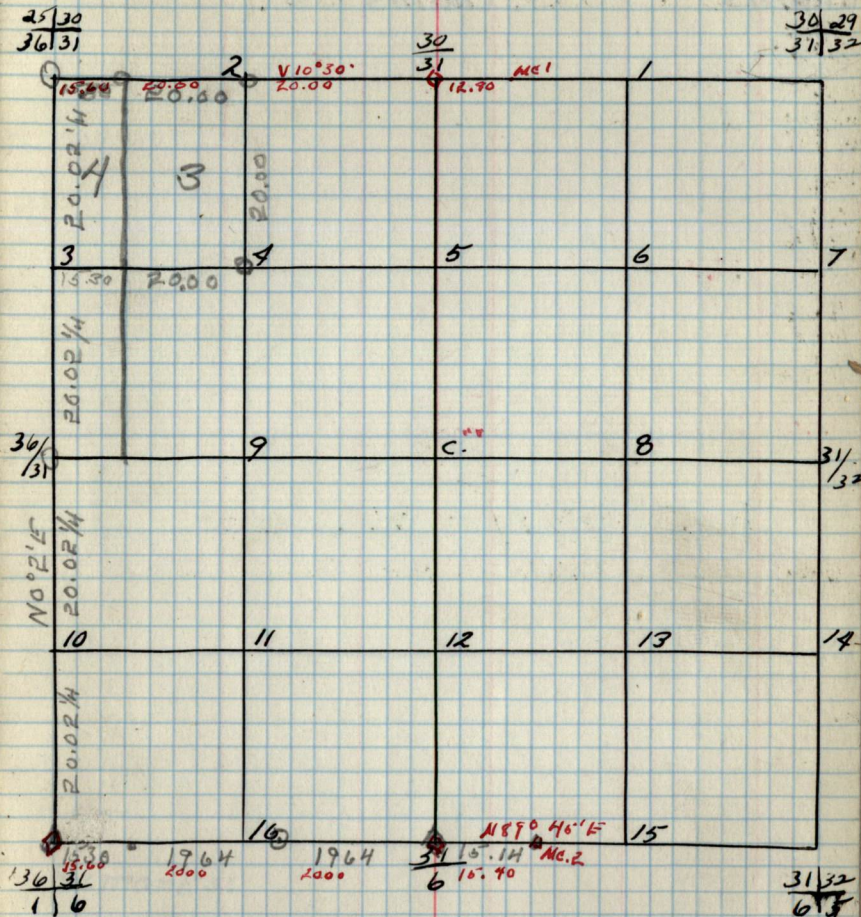
3/6 tam 5 570°W 14

1/6 tan Patten 5" N44°W 40

1/6 #2 Birch 4 S34°E :12 W.T.

Sec. 31 T148N - R26W.

by -

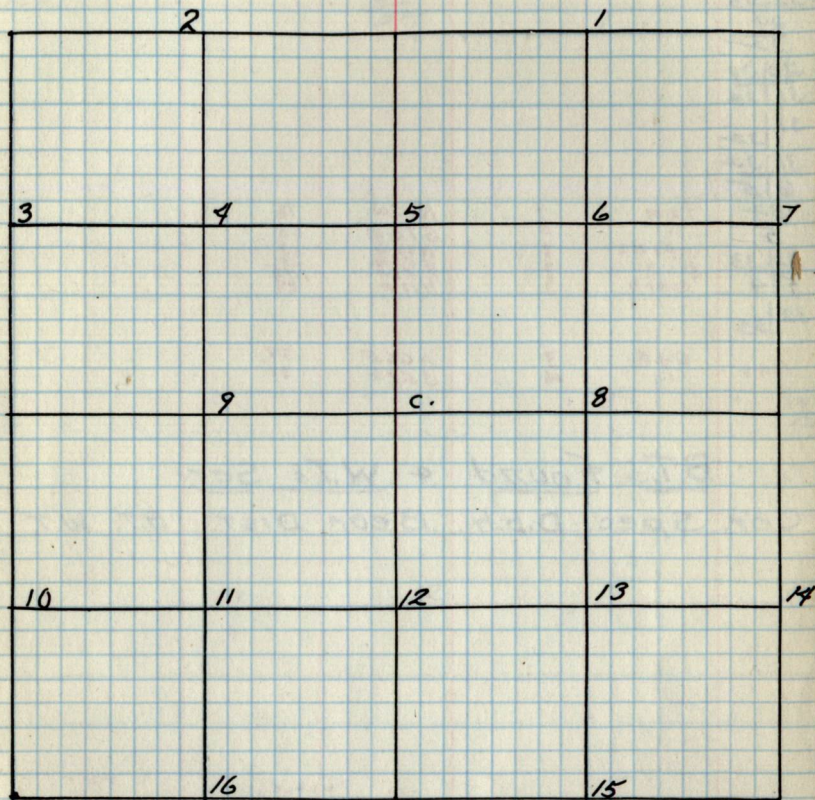


B.T.'s & W.T.'s (CONT)

Cor. Spec. D.b.h. Bear. DIST. B.T. W.T.

Chains

Chains



Remarks:

32

Original G.L.O. Corners

Cor. Spec. D.b.h. Bear. DIST.

29|28
32|3329
32

30|29

31|32

31|32

31|32

6|5

32|33

5|4

32|33

MCI

| | | | |
|---------|---|------|-----|
| fam | 4 | N67W | 78 |
| " | 6 | S73W | 80 |
| U. PINE | | N80W | 87 |
| N. " | | S53W | 87 |
| Aspen | | S58E | 175 |
| | | N72E | 28 |

| | | | |
|-----|---|------|----|
| OAK | 3 | N66E | 88 |
| " | 4 | S53E | 45 |

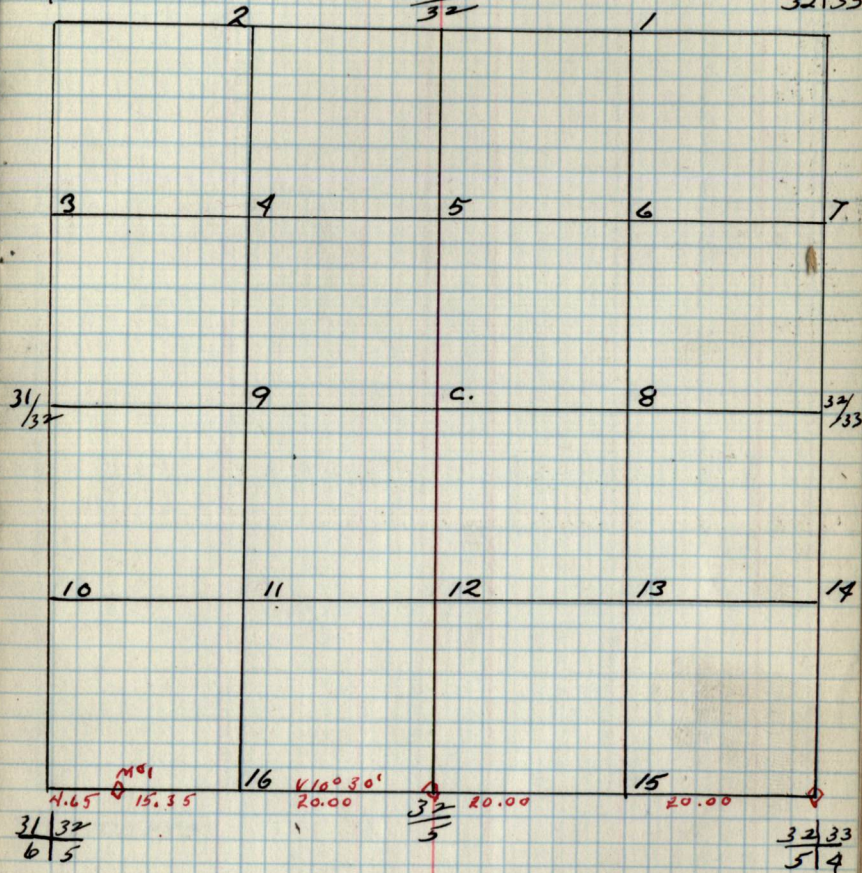
B.T.'s Found & W.T.'s Set.

Cor. Spec. D.b.h. Bear. DIST. B.T. W.T.

Sec. 32 - T148N - R26W

32

by -

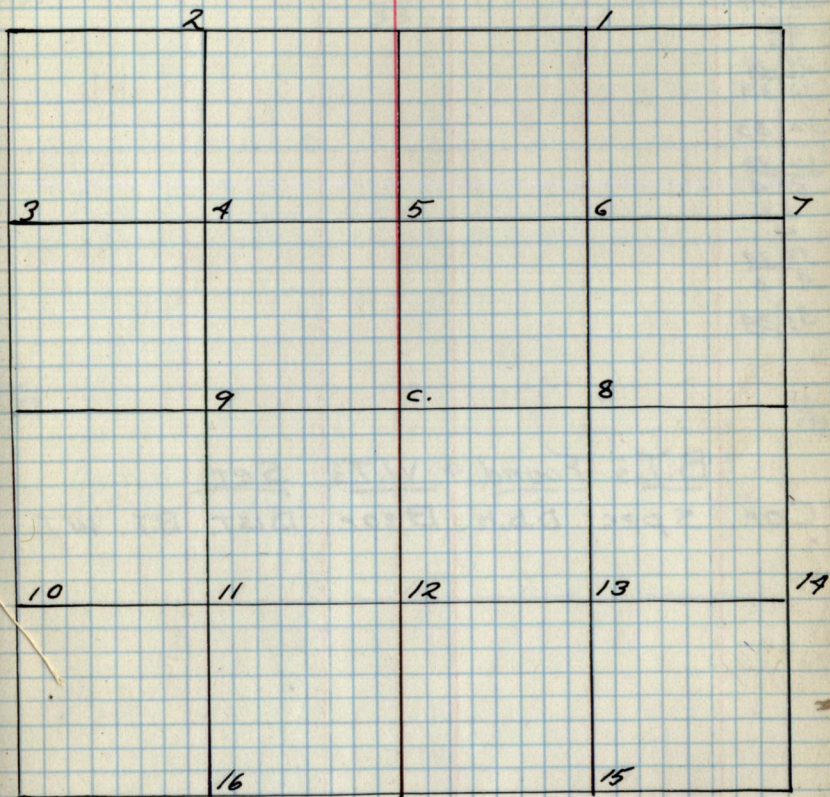
30|29
31|3229
3229|28
32|3331|32
6|532
532|33
5|4B.T.'s & W.T.'s (CONT.)

Cor. Spec. D.b.h. Bear. DIST. B.T. W.T.

Notes

Chairs

Chairs

Type & Cultural Map

Remarks:

33 Original G.L.O. Corners

Cor. Spec. D.b.h. Bear. DIST.

28|27
33|34

28
33

29|28
32|33

32|33

32|33
5|4

33
4

33|34
4|3

33|34

B.T.'s Found & W.T.'s Set

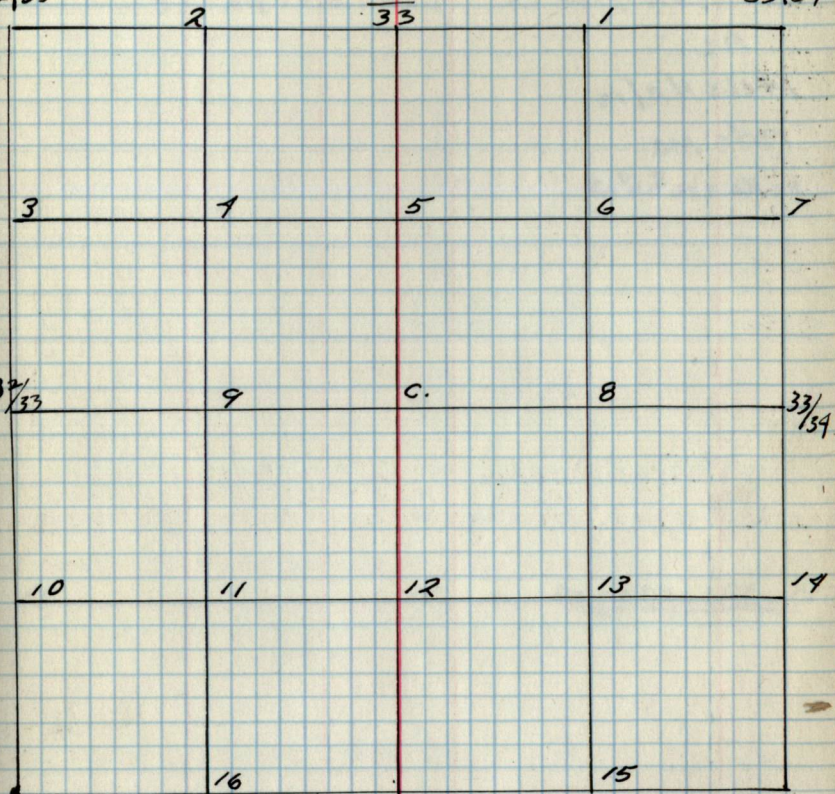
Cor. Spec. D.b.h. Bear. DIST. B.T. W.T.

Sec. 33 T. 148N - R 26W 33
by-

29|28
32|33

28
33

28|27
33|34



32|33
5|4

33
4

33|34
4|3

B.T.'s & W.T.'s (CONT.)

Cor. Spec. D.b.h. Bear. DIST. B.T. W.T.

Notes

Chairs

Line w.o. #14

Ac

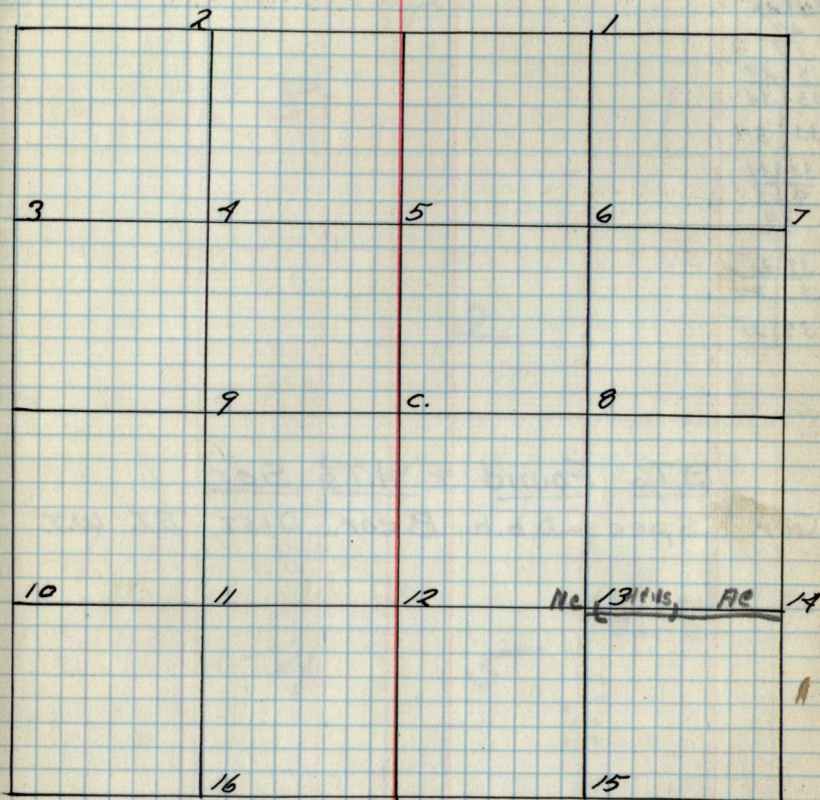
14chs Hc/15

19chs Ma

20.90chs #13

Chairs

Line s.o. #13

Type 4 Cultural Map

Remarks:

34

Original G.L.O. Corners

Cor. Spec. D.b.h. Bear. DIST.

 $\frac{27}{34}$ $\frac{34}{35}$

27

34

 $\frac{27}{34}$ $\frac{33}{34}$

33 | 34

 $\frac{33}{34}$ $\frac{4}{3}$

34

3

 $\frac{34}{35}$

3 | 2

34 | 35

B.T.'s Found & W.T.'s Set.

Cor. Spec. D.b.h. Bear. DIST. B.T. W.T.

Sec. 34 T148N-R26W

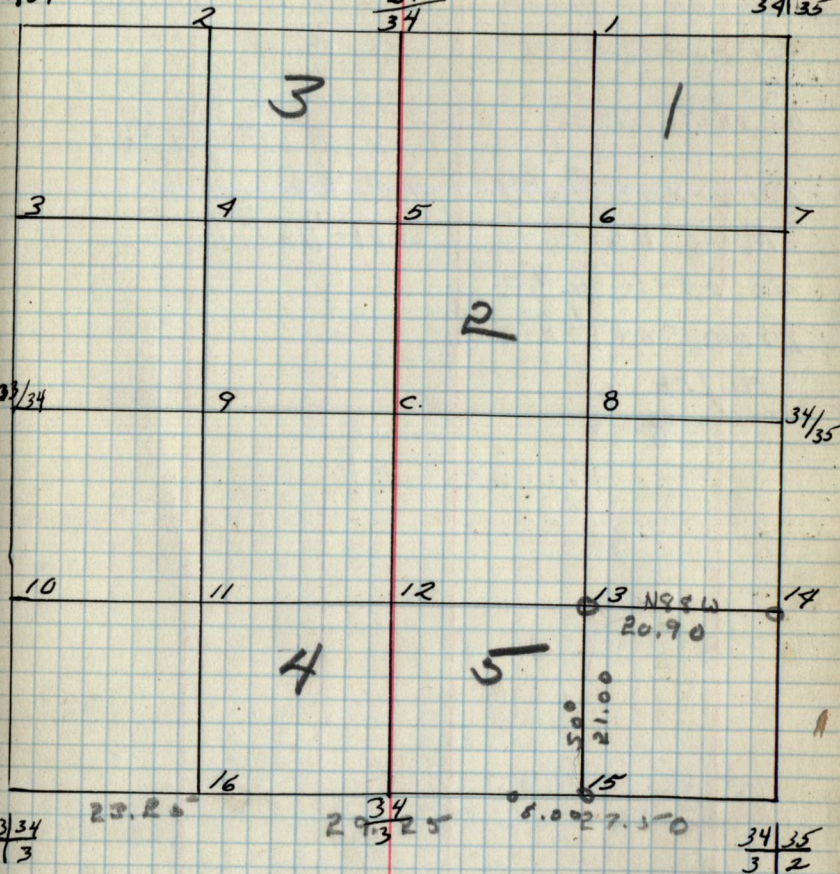
34

by-

 $\frac{27}{34}$ $\frac{33}{34}$

27

34

 $\frac{27}{34}$ $\frac{34}{35}$  $\frac{33}{34}$ $\frac{4}{3}$

23.25

 $\frac{34}{35}$

29/34 3/25

5.00 27.50

 $\frac{34}{35}$

3 | 2

B.T.'s & W.T.'s (CONT.)

Cor. Spec. D.b.h. Bear. DIST. B.T. W.T.

Chains

LINE No F 1/4 cor
 Bet. sec. 34-35
 Mcb
 40. 28 chs sec. 000

LINE No F 1/16 #9
 Mcb Bb
 40. 28 chs 1/16 #2

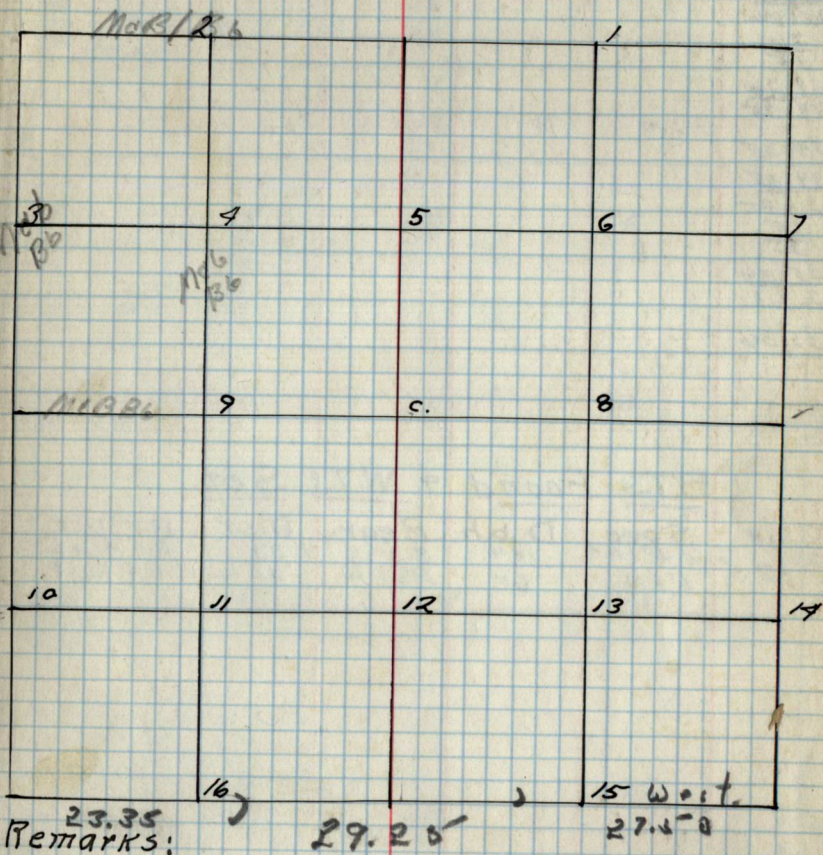
LINE So F 1/4 cor.
 Mb/86
 10 chs. quit

Chains

LINE F Bet. sec. 35-26
 Mb Bc
 20 chs 1/16 #2

LINE F o F 1/4 cor
 Mcb Bb
 20 chs 1/16 #9

Type & Cultural Map



35

Original G.L.O. Corners
Spec. D.b.h. Bear. DIST.

Cor. 26/25

35/36

26/35

35/36

22/26

34/35

34/35

34/35

3/2

35/2

35/36

2/1

35/36

FLM 14" N82W 62

B.T.'s Found & W.T.'s Set.

Cor. 26/35

Spec. W.P.I.M.F.
FLM

D.b.h. 10"

Bear. S 55° W
N 65° WDIST. 27
30B.T. W.T.
B.T. & W.T.
137 + w.t.

Sec. 35 T148N-R26W.

35

by -

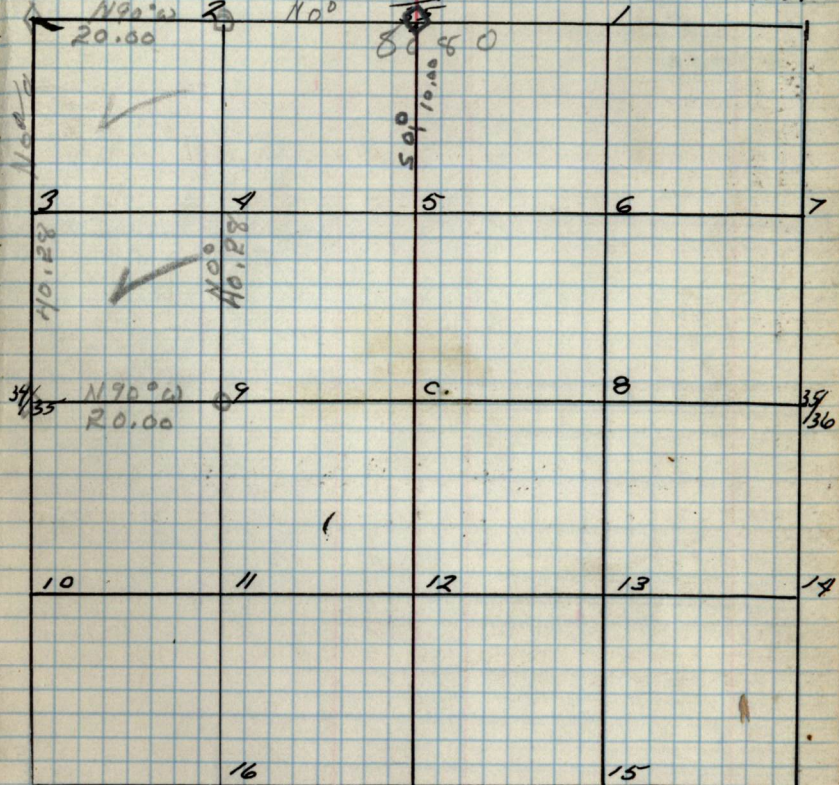
27/26

34/35

26/35

26/25

35/36



34/35

3/2

35/36

2/1

35/36

2/1

B.T.'s & W.T.'s (CONT.)

Cor. Spec. D.b.h. Bear. DIST. B.T. W.T.

Notes

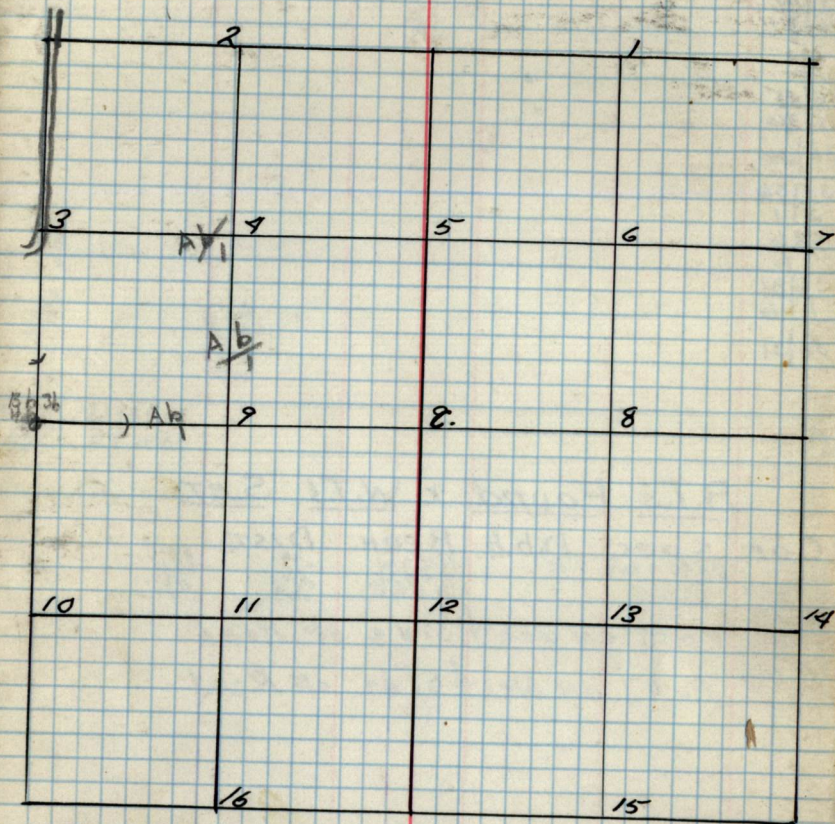
Chairs

Chairs

Linen of $\frac{1}{2}$ in Ret sel

35-36

B64636

Type & Cultural Map

REMARKS:

36

Original G.L.O. Corners

| Cor. | Spec. | D.b.h. | Bear. | DIST. |
|-------|-------|--------|-------|-------|
| 25/30 | | | | |
| 36/31 | | | | |
| 25 | | | | |
| 36 | | | | |
| 26/25 | | | | |
| 35/36 | | | | |
| 35/36 | | | | |
| 35/36 | | | | |
| 21 | | | | |
| 36 | | | | |
| 1 | | | | |
| 36/31 | | | | |
| 7 | | | | |
| 36/31 | | | | |

B.T.'s Found & W.T.'s Set

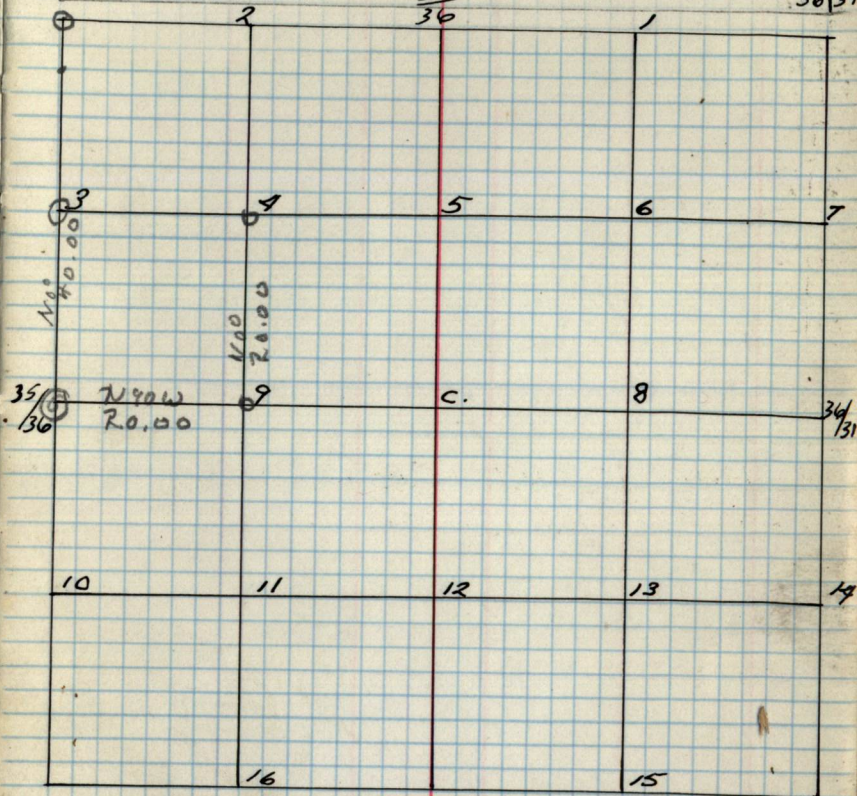
| Cor. | Spec. | D.b.h. | Bear. | DIST. |
|---------|------------|--------|--------|-------|
| 1/43/36 | Birch stub | 14 | N 80 W | 40 |
| 26/25 | cedar | 7 | S 70 W | 26 |
| 35/36 | cedar | 7 | N 44 E | 100 |

post on west side of Road

post on west side of Road

Sec. 36 T148N-R26W.
by-

36

26/25
35/3625
3625/30
36/3135/36
21136
136/31
116B.T.'s & W.T.'s (cont.)

| Cor. | Spec. | D.b.h. | Bear. | DIST. | RT. W.T. |
|------|-------|--------|-------|-------|----------|
|------|-------|--------|-------|-------|----------|

