

T147N R27W

D.R.

MINING BOOK

NO. 47

CC 34

EUGENE DIETZGEN CO.

DRAWING MATERIALS, MATHEMATICAL and
SURVEYING INSTRUMENTS

Chicago New York San Francisco New Orleans Pittsburg Toronto

Distances from Center of Roadway for Cross-Sectioning
Roadway 16 feet wide. Side Slopes 1 on 1.
For Single Track Embankment.

H	0	.1	.2	.3	.4	.5	.6	.7	.8	.9	H
0	8.0	8.1	8.2	8.3	8.4	8.5	8.6	8.7	8.8	8.9	0
1	9.0	9.1	9.2	9.3	9.4	9.5	9.6	9.7	9.8	9.9	1
2	10.0	10.1	10.2	10.3	10.4	10.5	10.6	10.7	10.8	10.9	2
3	11.0	11.1	11.2	11.3	11.4	11.5	11.6	11.7	11.8	11.9	3
4	12.0	12.1	12.2	12.3	12.4	12.5	12.6	12.7	12.8	12.9	4
5	13.0	13.1	13.2	13.3	13.4	13.5	13.6	13.7	13.8	13.9	5
6	14.0	14.1	14.2	14.3	14.4	14.5	14.6	14.7	14.8	14.9	6
7	15.0	15.1	15.2	15.3	15.4	15.5	15.6	15.7	15.8	15.9	7
8	16.0	16.1	16.2	16.3	16.4	16.5	16.6	16.7	16.8	16.9	8
9	17.0	17.1	17.2	17.3	17.4	17.5	17.6	17.7	17.8	17.9	9
10	18.0	18.1	18.2	18.3	18.4	18.5	18.6	18.7	18.8	18.9	10
11	19.0	19.1	19.2	19.3	19.4	19.5	19.6	19.7	19.8	19.9	11
12	20.0	20.1	20.2	20.3	20.4	20.5	20.6	20.7	20.8	20.9	12
13	21.0	21.1	21.2	21.3	21.4	21.5	21.6	21.7	21.8	21.9	13
14	22.0	22.1	22.2	22.3	22.4	22.5	22.6	22.7	22.8	22.9	14
15	23.0	23.1	23.2	23.3	23.4	23.5	23.6	23.7	23.8	23.9	15
16	24.0	24.1	24.2	24.3	24.4	24.5	24.6	24.7	24.8	24.9	16
17	25.0	25.1	25.2	25.3	25.4	25.5	25.6	25.7	25.8	25.9	17
18	26.0	26.1	26.2	26.3	26.4	26.5	26.6	26.7	26.8	26.9	18
19	27.0	27.1	27.2	27.3	27.4	27.5	27.6	27.7	27.8	27.9	19
20	28.0	28.1	28.2	28.3	28.4	28.5	28.6	28.7	28.8	28.9	20
21	29.0	29.1	29.2	29.3	29.4	29.5	29.6	29.7	29.8	29.9	21
22	30.0	30.1	30.2	30.3	30.4	30.5	30.6	30.7	30.8	30.9	22
23	31.0	31.1	31.2	31.3	31.4	31.5	31.6	31.7	31.8	31.9	23
24	32.0	32.1	32.2	32.3	32.4	32.5	32.6	32.7	32.8	32.9	24
25	33.0	33.1	33.2	33.3	33.4	33.5	33.6	33.7	33.8	33.9	25
26	34.0	34.1	34.2	34.3	34.4	34.5	34.6	34.7	34.8	34.9	26
27	35.0	35.1	35.2	35.3	35.4	35.5	35.6	35.7	35.8	35.9	27
28	36.0	36.1	36.2	36.3	36.4	36.5	36.6	36.7	36.8	36.9	28
29	37.0	37.1	37.2	37.3	37.4	37.5	37.6	37.7	37.8	37.9	29
30	38.0	38.1	38.2	38.3	38.4	38.5	38.6	38.7	38.8	38.9	30
31	39.0	39.1	39.2	39.3	39.4	39.5	39.6	39.7	39.8	39.9	31
32	40.0	40.1	40.2	40.3	40.4	40.5	40.6	40.7	40.8	40.9	32
33	41.0	41.1	41.2	41.3	41.4	41.5	41.6	41.7	41.8	41.9	33
34	42.0	42.1	42.2	42.3	42.4	42.5	42.6	42.7	42.8	42.9	34
35	43.0	43.1	43.2	43.3	43.4	43.5	43.6	43.7	43.8	43.9	35
36	44.0	44.1	44.2	44.3	44.4	44.5	44.6	44.7	44.8	44.9	36
37	45.0	45.1	45.2	45.3	45.4	45.5	45.6	45.7	45.8	45.9	37
38	46.0	46.1	46.2	46.3	46.4	46.5	46.6	46.7	46.8	46.9	38
39	47.0	47.1	47.2	47.3	47.4	47.5	47.6	47.7	47.8	47.9	39
40	48.0	48.1	48.2	48.3	48.4	48.5	48.6	48.7	48.8	48.9	40

Example—If point is 22.6 ft. above grade, how far should it be from center line to be a slope stake point? Ans. from Table 30.6. For same slopes but other widths of roadbed, correct above figures by one-half difference in width of roadbed; thus in example above, for 20 ft. roadbed distance will be $30.6 + (20 - 16) \div 2$ or 2 ft. added to $30.6 = 32.6$. For slopes of 1 on $1\frac{1}{2}$ see inside of back cover.

Copyright, 1914, by Eugene Dietzgen Co.

147-27

Scanned

9/6/2012

Shanny

The paper stock of this book is made
of a **high grade 50% rag paper**
having a **water resisting surface**
and is sewed with **Bing Special**
Enamel Waterproof Thread.

Made in U. S. A.

Handwritten notes in the right margin:
#E-20
CA
Grnd
Stake
ca
Sec
1 in
KS
28
9.25
9.25
to
front
ch
9.25

2 x 28

5 x 13.0

Table of Departure Corrections

Dist.	15'	30'	45'	1°	1°15'	1°30'	1°45'	2°
1 ch.	—	—	.013	.017	.021	.026	.03	.034
20	.088	.18	.26	.35	.44	.52	.61	.70
40	.18	.38	.52	.70	.87	1.05	1.22	1.40
60	.26	.52	.79	1.05	1.31	1.57 1.57	1.83 1.83	2.10
80	.35	.70	1.05	1.40	1.74	2.10	2.44	2.80

Office Copy

T147N R27W

ORIGINAL GLO. Survey IN-1880 NA. 10°30'E
Resurvey by GLO. IN-1936 NA. 7°E

Legend

- Corner set by GLO IN 1936
- ◆ GLO corner positively identified
- ◇ probable GLO corner
- FS corner
- ◎ County corner

Legend for type Map

- | | |
|-----------------------------|-----------------------------------------|
| 0 cross land | A Aspen |
| 0 ₁ wild Pasture | B Balsam |
| 0 ₂ Hay Meadow | C Cultivated |
| 1 Bush | C ₁ Impoverished Field |
| 1 _s Swamp Brush | M Mixed Hardwoods |
| 2 Muskeg | L Maple |
| 3 Birch | K oak |
| 4 Cedar | R Ash |
| 5 Jack Pine | W ₁ Swamp |
| 6 W. Spruce | T ₆ Nonproductive "stagnant" |
| 7 B. spruce | W water |
| 8 Norway pine | X seed trees |
| 9 white pine | |
| 7 tamarack | |
- a Reproduction up to 6"
 b Saplings 6" in ht to 4.5" DBH
 c poles 4.5" DBH to 9.5" DBH
 Use Capital Letters for saw timber over 9.5"

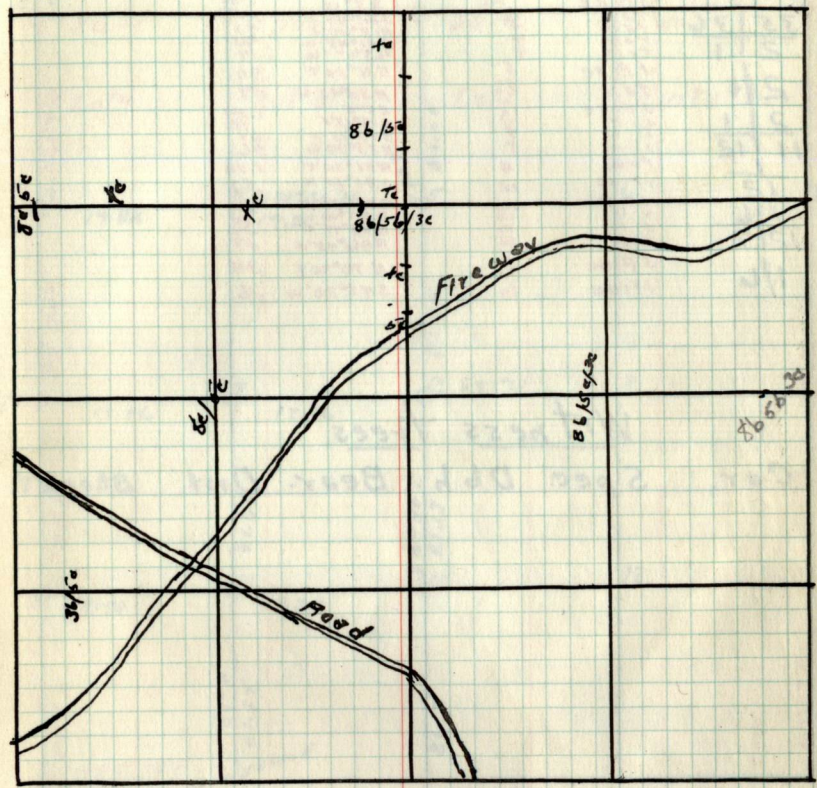
- ==== Improved Road
 - - - - - Woods Road
 → → Stream show direction
 ||| Body of Water
 ~ ~ ~ ~ ~ pronounced Ridge

chains

Notes

chains

type + Cultural Map



Remarks:-

1

Resurvey GLO Corners

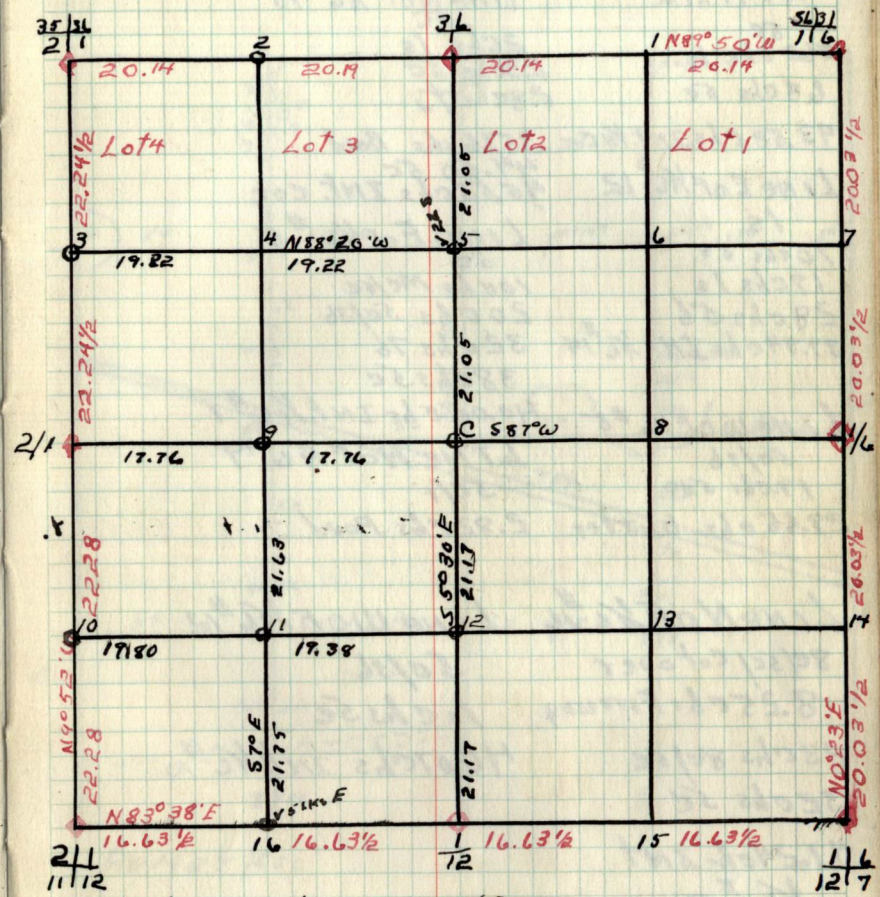
Cor	Spec.	Dbh	Bear.	Dist.
36 31	J PINE	12	N51°34'E	1.45
1/6	" "	12	S43°E	.78
36	" "	12	S5°15'W	.37
1	" "	6	N68°W	.34
35 36	J PINE	12	N52°15'E	1.45
2 1	" "	12	S3°W	.78
2 1	" "	12	S82°45'E	1.16
11 12	" "	12	N8°30'E	.43
1/6	" "	12	S41°45'W	.40
1/6	" "	12	N45°15'W	.34
1/6	" "	12	S11°30'E	.74
1/6	" "	12	N33°45'W	.29
1/6	" "	12	N5°E	1.54
1/6	" "	12	S19°15'E	.72
1/6	" "	12	S73°15'W	.63
1/6	" "	12	N73°30'W	.46
1/6	" "	12	S51°30'E	1.52
1/6	" "	12	S91°15'W	.57
1/6	" "	12	S76°30'E	.82
1/6	" "	12	S87°W	.30
1/6	" "	12	N83°45'E	.24
1/6	" "	12	N46°45'E	.29
1/6	" "	12	N70°30'E	.34
1/6	" "	12	S43°30'W	.16

Witness trees

Cor. Spec. Dbh Bear. Dist. Btor wt.

Sec. T147N R27W

by - Heberle and Party



Witness trees (cont)

Cor. Spec. Dbh Bear. Dist. Btor wt.

Notes

CHAINS

N.S. 1/4 LINE
 5c
 62 chs. 1s
 68 chs 5c

93.58 chs INT. 1/4 COR.

LINE E OF 1/2 #12

1s
 10 chs 5c
 19 chs 1s
 28 chs 5c
 37.94 chs INT. 1/2 #14

LINE W OF 1/2 #5

5c/36
 19 chs 5c
 29.65 chs Water

LINE N OF 1/2 #16

8c/5c/ Cutover
 8.25 chs Fireway
 23 chs 8c/5c
 32 chs 5c

47.24 ch. INT
 1/2 #9

CHAINS

LINE N OF 1/2 #15

5c
 2 chs 1s
 23 chs 5c
 28 chs 7c

35.66 chs Road

44.50 5c
 45.53 chs INT. COR.

LINE E OF 1/2 #5

5c
 10 chs Mc/5c
 20 chs 5c/36
 32 chs 7c
 38 chs 5c

40.00 chs INT. 1/2 #7

LINE N OF 1/2 #9

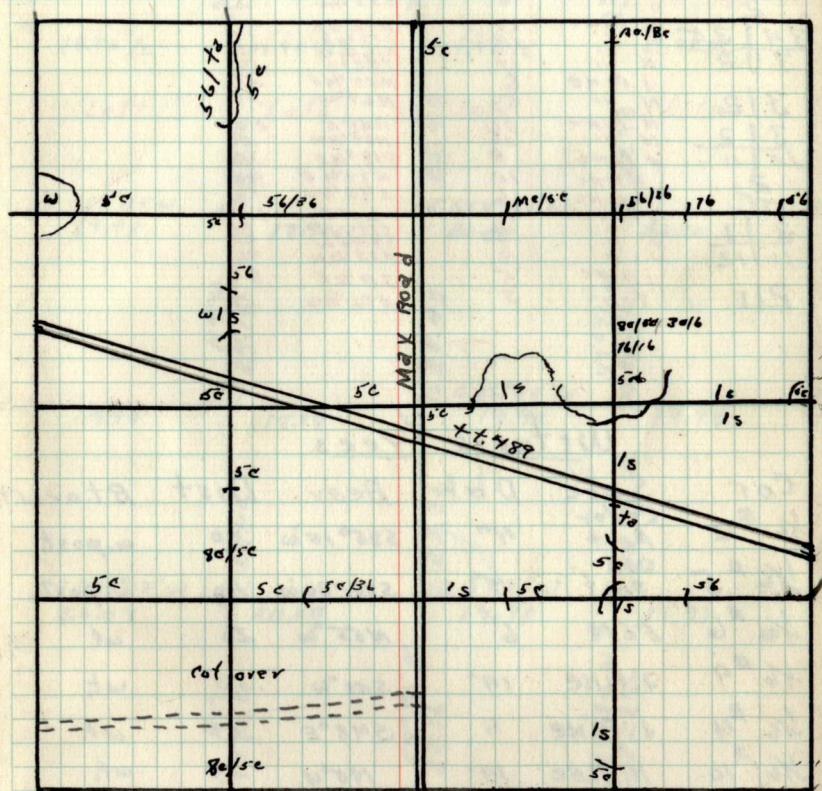
5c/1
 2.82 chs Road

LINE W OF 1/2 #12

5c/36
 10 chs 5c

40.07 chs INT. 1/2 #10

Type + Cultural Map



REMARKS:

2

Resurvey GLO corners

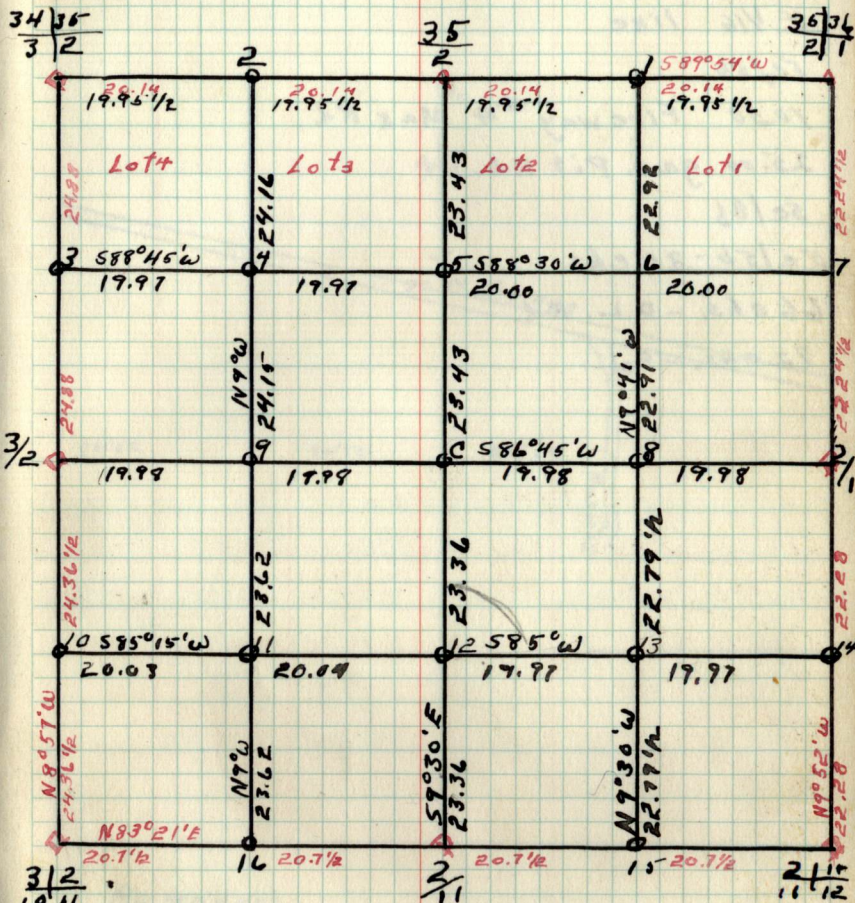
Cor.	Spec	Dbh	Bear	Dist
35/34	J.PINE	4	S 82° 34' E	.116
2/1	J.PINE	4	N 18° 14' E	.43
3/1	J.PINE	4	S 74° 34' W	.40
2/1	J.PINE	4	N 65° 40' W	.54
3/1	W.PINE	16	N 20° 14' E	1.75
2/1	J.PINE	8	S 55° 14' W	.57
34/35	N.PINE	14	N 72° 12' E	.40
3/2	N.PINE	16	S 13° 34' E	.55
3/2	N.PINE	12	N 16° 34' W	.56
3/2	J.PINE	14	S 38° 0' W	.56
3/2	J.PINE	6	N 58° 14' E	.27
3/2	N.PINE	5	N 67° 0' W	.55
3/2	N.PINE	26	N 41° 0' E	2.28
3/2	N.PINE	26	N 82° 14' W	.66
10/11	J.PINE	8	S 49° 34' E	.42
2/1	N.PINE	12	N 74° 14' E	.46
2/1	N.PINE	6	S 43° 12' W	.50
2/1	J.PINE	12	N 5° 0' E	1.54
11/12	J.PINE	14	S 19° 14' E	.75
2/1	J.PINE	14	S 73° 14' W	.46
2/1	J.PINE	5	N 78° 12' W	.46
2/1	J.PINE	5	S 11° 14' E	.74
2/1	J.PINE	3	N 33° 34' W	.29

Witness trees

Cor	Spec	Dbh	Bear	Dist	Bt. or wt.
1/6 # 12	Cedar Post	4"	S 86° 15' W	.40	w. post.
1/6 # 5	OAK Post	4"	S 88° 36' W	.40	w. post.
1/6 # 6	FLM	6"	N 55° W	.20	wt.
1/6 # 9	J. PINE	14"	S 21° W	.50	wt.
1/6 # 4	J. PINE	4	S 48° E	.07	wt.
1/6 # 10	N. PINE	14'	N 8° W	.24	wt.
1/6 # 11	J. PINE	12"	N 9° W	.03	wt.

Sec. 2 T147N R27W

By Habula



Witness trees (Cont)

Cor. Spec. Dbh. Bear. Dist. Bt. or wt.

3

Notes

chains N. on

chains

E 1/16 line

5c/5b

10.50 Fireway #4 Max Rd.

25.00 gar. Pit Rd.

5c/8b

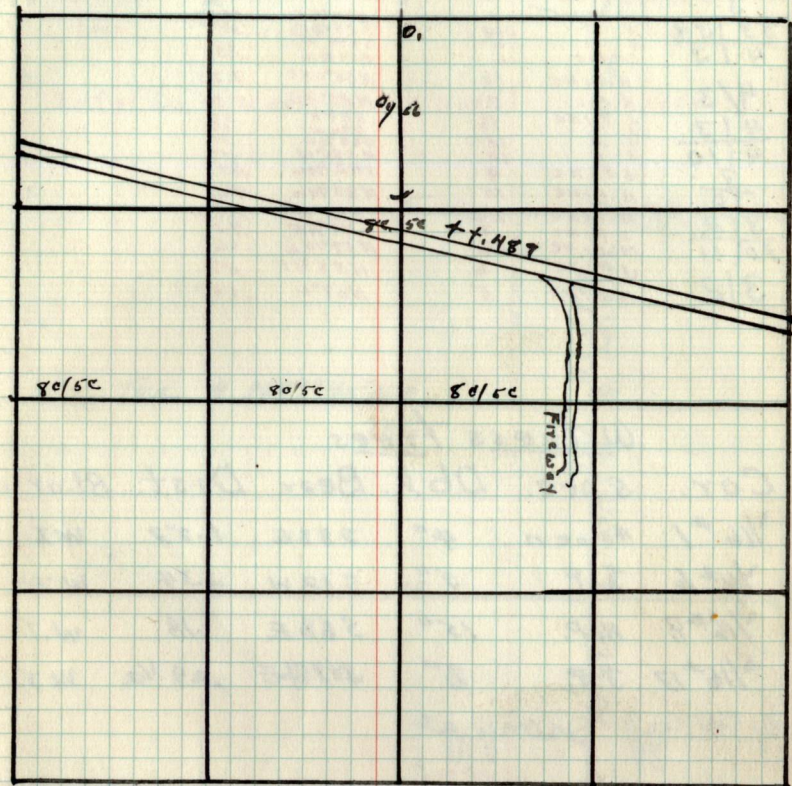
5c/5b-35chs.

66chs. - D.L. Rd.

72chs. - 0₂

Type & Cultural Map

3



Remarks:

3

Resurvey GLO corners

Cor.	Spec.	Dbh	Bear	Dist.
34/35	N. PINE	14	N72°42'E	.40
3/2	N. "	12	S13°45'E	.57
3/4	N. "	14	N16°44'W	.36
3	J. PINE	10	N19°44'W	3.75
3/3	J. PINE	4	S89°E	.85
33/34	N. PINE	9	N37°46'E	.52
4/3	N. "	14	S53°34'E	.53
4/3	N. "	6	S9°44'W	.23
4/3	N. PINE	6	N34°44'W	.23
4/3	N. "	16	N34°08'E	2.33
4/3	J. PINE	8	N25°44'W	2.30
9/10	J. "	10	S27°E	.58
7	J. "	12	N64°42'W	.30
3	J. PINE	12	N58°0'W	.14
3/2	N. PINE	9	S42°34'W	.47
10/11	N. PINE	10	N83°44'W	.46
3/2	N. PINE	26	N41°E	2.28
3/2	J. PINE	8	S47°46'E	.42
3/2	N. PINE	26	N57°44'W	.66
3/2	J. PINE	6	N55°46'E	.27
3/2	N. PINE	5	N67°W	.55

Witness trees

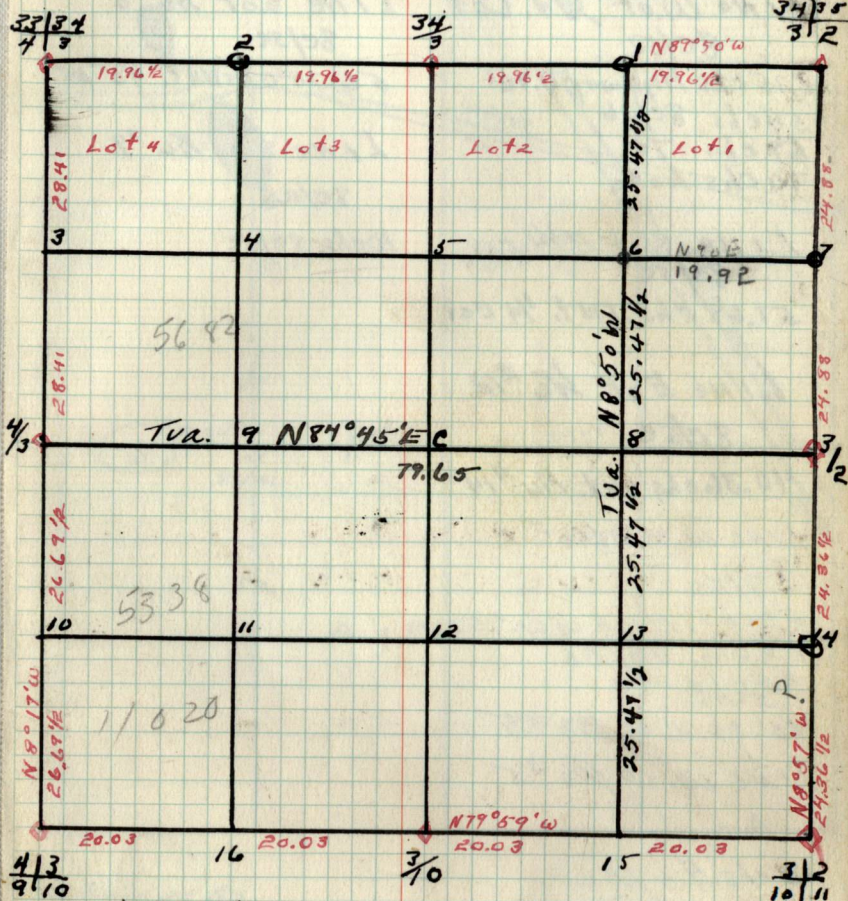
Cor.	Spec.	Dbh.	Bear.	Dist.	Bt. or Lt.
1/16 #1	Aspen	4"	S88E	1.53	WI
1/16 #6	J. P.	5"	S12W	2.34	W.T.
1/16 #8	N. P.	15"	S68E	.18	W.T.
1/16 #13	J. P.	8"	N78E	29 1/2	WT,

1/4 Cor. Sec 3
34
Jroippe

Sec 3 T147N R2TW

3

BY - Haberkle & Party

4/3
9/10Witness Trees 'Cont'

Cor.	Spec.	Dbh.	Bear.	Dist	Bt. or Wt
------	-------	------	-------	------	-----------

4

Notes

chains

Line W.O.F $1/4$ cor
8c/5c

2.75 chs Highway D.461

54 chs 8c/36

59 chs 7c

70 chs Lake

Line S.O.F $1/4$ cor
8c/5c57.68 chs INT. $1/4$ cor.Line E.O.F $1/6$ #12
8c/5c40.36 chs INT. $1/6$ #14Line W.O.F $1/16$ #7
9/5c

20 chs. Highway .46

26 chs. $1/6/16$

32 chs Ac

40.20 chs $1/16$ #5Line W.O.F $1/16$ #5

Ac

16 chs. $1/6/16$ 20.10 chs $1/16$ #4

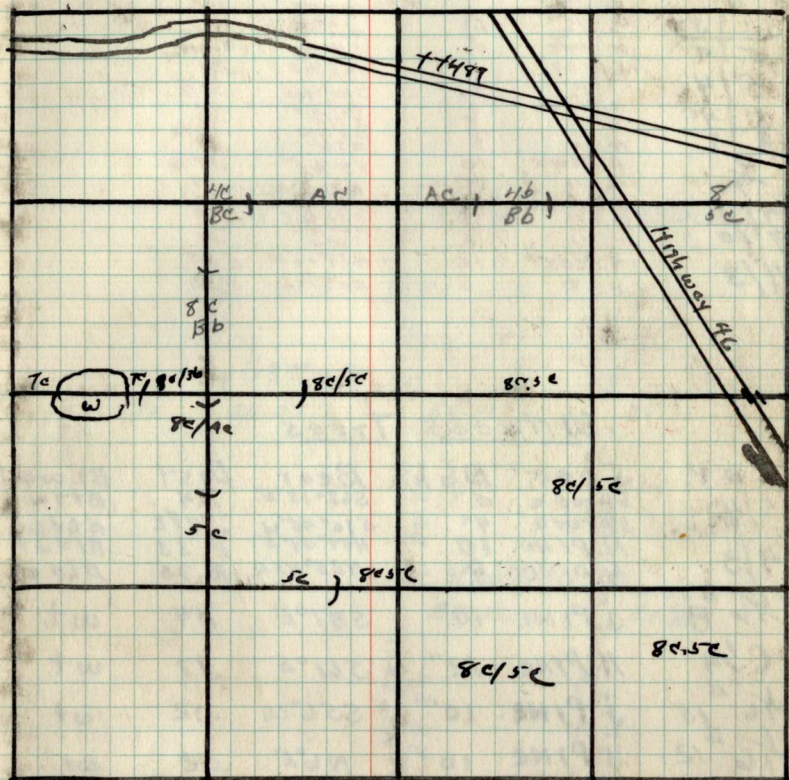
chains

Line S.O.F $1/6$ #8
8c/5c56.75 chs INT. $1/6$ #15Line S.O.F $1/6$ #9
8c/5c

10 chs 8c/5c

Types of Cultural Map

4



Remarks:

4

Resurvey GLO Corners

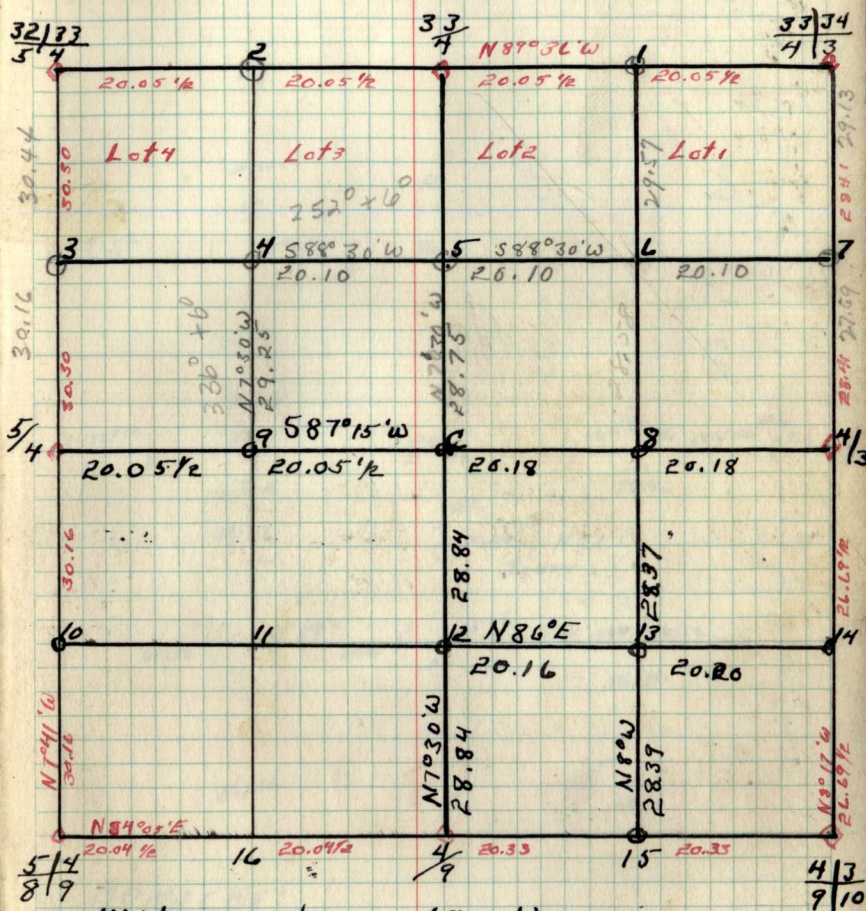
Cor.	Spec	Dbh	Bear.	Dist.
33/34	N. PINE	4 1/4	N77°E	.50
4/3	N. "	6	S63°E	.28
33	Cedar	6	S76°W	.23
4	Birch	4	N54°W	.42
32/33	Poplar	10	N28°E	1.20
5/4	N. PINE	6	S14°W	1.03
5/4	N. PINE	10	N72°E	1.19
5/4	N. PINE	12	S22°E	1.29
8/9	N. PINE	21	N30°W	1.02
4	Spruce	5	S40°W	.24
4	"	7	S63°E	.37 1/2
4/3	N. PINE	3	S10°W	.54
4/3	N. "	3	N64°E	.20
8/9	N. "	10	S31°E	.32 1/2
4	N. "	10	S58°W	.07
4/3	N. PINE	10	N7°W	.11 1/2
4/3	"	5	S5°E	.29
4/3	"	10	N71°W	.38
4/3	"	10	S27°E	.30
4/3	"	10	S30°W	.30
4/3	"	12	N67°W	.14
4/3	"	10	S30°W	.233
4/3	"	8	N74°08'E	2.30
	"		N25°W	

(1936 Resurvey)

Witness trees

Cor.	Spec	Dbh	Bear.	Dist	Bt. or wt.
5/4	Spruce	5"	S63°15'E	.24	Bt + wt
4/3	Spruce	4"	S10°45'W	.37 1/2	Bt + wt.
1/6 # 8	N. PINE	10	N37°08'E	2.33	Bt + wt.
C 1/4	N. PINE	8	N25°45'W	2.36	Bt + wt.
1/6 # 15	j PINE	10"	S87°E	.04	wt.
1/6 # 12	N. PINE	12"	S61°E	.17	wt.
1/6 # 14	j PINE	10"	S56°W	.02	wt.
1/6 # 13	j PINE	10	N6°E	.02	wt.
1/6 # 14	N. PINE	6"	S16°E	.19	wt.
1/6 # 13	N. PINE	12	N34°W	.28	wt.
1/6 # 7	J. PINE	5"	S46°E	.11	wt.
1/6 # 5	ELM	6"	N46°W	.04	wt.
33/34	Squares				
4/3	Cedar				
1/6 # 4	Post	6"			wt

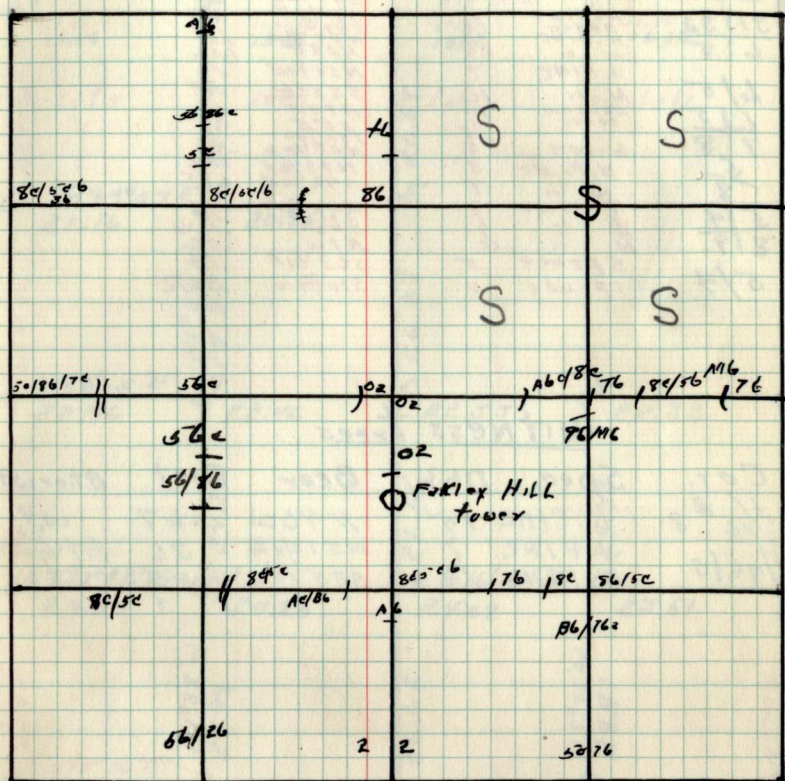
Sec. 7 T147N R27W

By - Haberle & Party
3/1/38Witness trees (cont)
Cor. Spec. Dbh. Bear. Dist. Bt. or wt.

5
chains

~~Notes~~
chains

type of Cultural Map 5



Remarks:

5

Resurvey GLO CORNERS

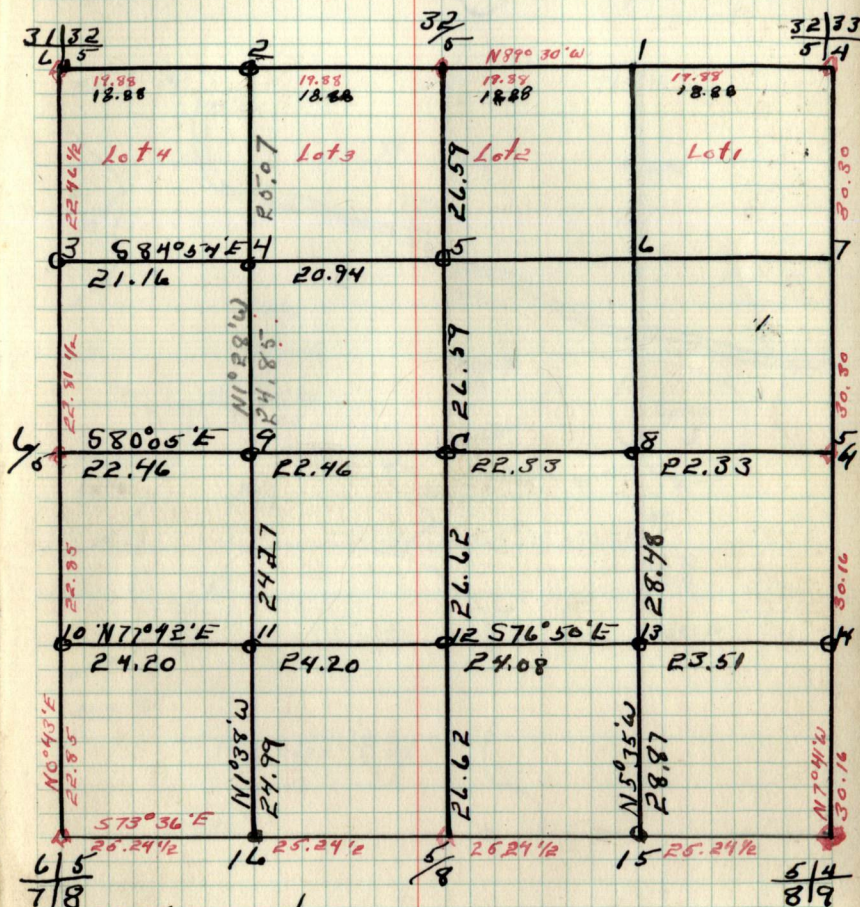
Cor.	Spec.	Dbh.	Bear.	Dist.
32/33	N. PINE	16	N12°E	1.03
5/4	N. PINE	12	S22°E	1.13
32	N. PINE	24	S30 1/2 W	.81
5	N. PINE	4	S40 W	1.02
31/32	"	4	N12 1/2 W	.25
6/5	"	4	S34 1/2 W	.14
7/8	N. PINE	6	S7 3/4 E	.60
5/8	N. PINE	12	S30 1/2 W	1.19
6/5	"	24	N28 E	1.56
7/8	J. PINE	7	N51 3/4 E	.36
5/8	N. "	10	S35 1/2 W	.33
8/9	BALCOM	10	N14 E	.12
5/4	cedar	14	N14 E	.12
8/9	"	8	S35 1/2 W	.32 1/2
5/4	W. oak	8	N23 1/2 W	.48
8/9	N. PINE	8	N73 1/2 E	1.46
5/4	"	9	S46 1/2 E	1.85
8/9	"	8	N64 1/4 E	.54
5/4	"	8	S35 W	.32 1/2
8/9	"	10	N7 W	.07
5/4	spruce	5	S63 1/4 E	.24
8/9	spruce	4	S10 3/4 W	.37 1/2

Witness trees

Cor.	Spec.	Dbh.	Bear.	Dist.	Bt. or wt.
1/16 #3	R. PINE	14"	N46 W	.67	wt.
1/16/5	J. PINE	7	N51 3/4 E	36	Bt. & wt.
	N. PINE	10	S35 1/2 W	33	Bt.

5

Sec. 5 T147N R27W

By - Balk + Party
1937

Witness trees (cont)

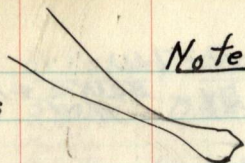
Cor. Spec. Dbh. Bear. Dist. Bt. or wt.

6

chains

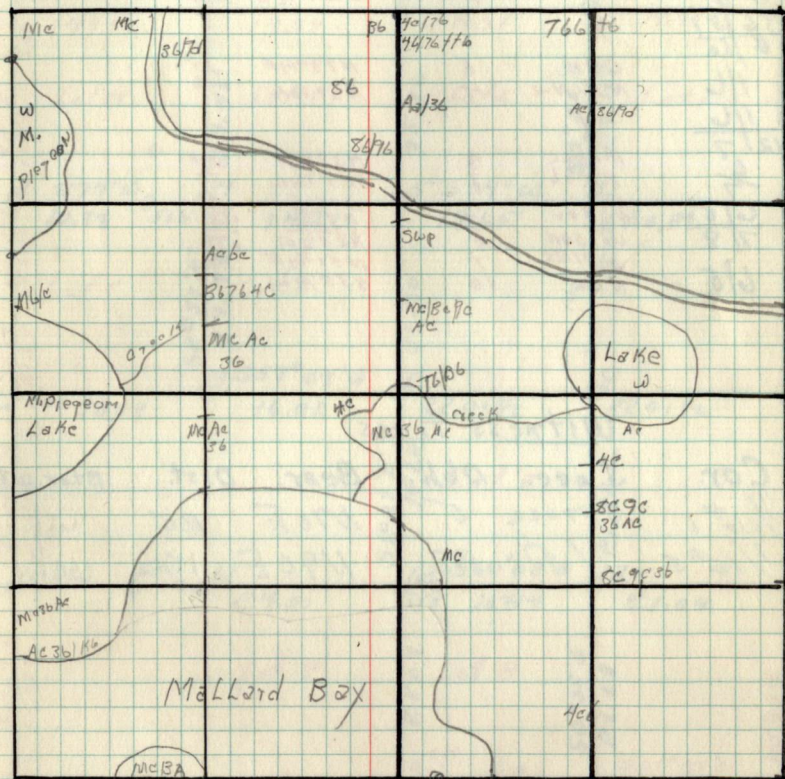
Notes

chains



Type + Cultural Map

6



6

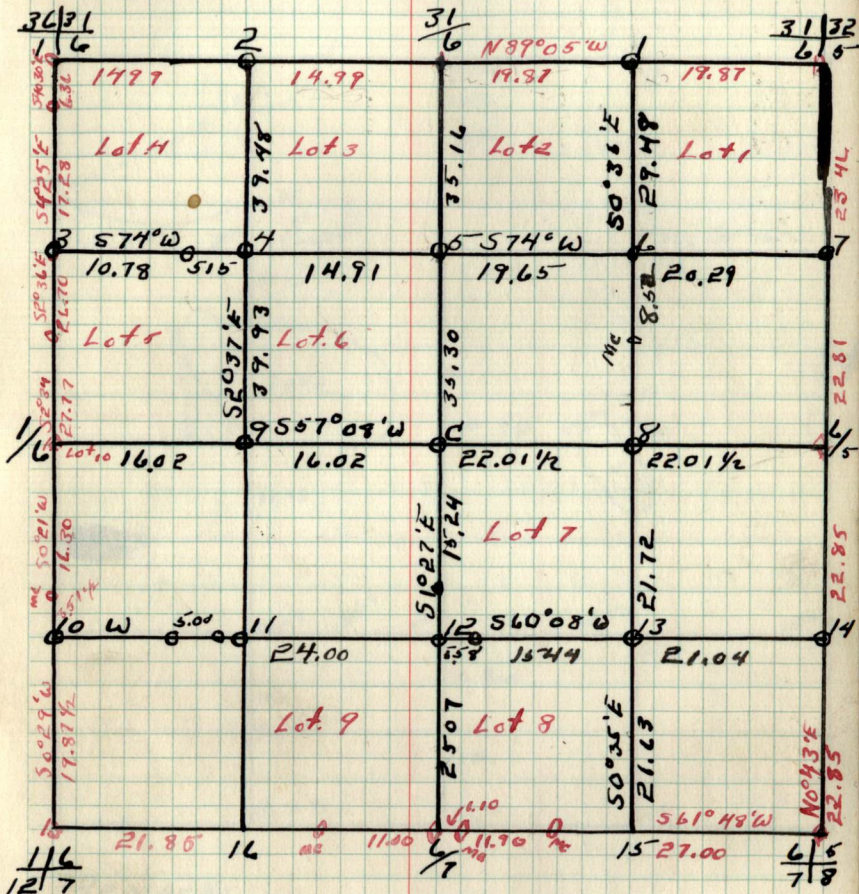
Resurvey GLO corners

Cor.	Spec.	Dbh	Bear.	Dist.
31/32	N. PINE	16	S 75° 15' E	.47
2/5	cedar	12	N 37° 15' W	.30
	N. PINE	12	N 28° E	.53
31/6	tam	4	N 24° E	.38
	"	4	S 24° 12' E	.20
36/31	X			
6/6	OAK	6	N 78° 34' E	.15
11/6	N PINE	4	N 89° 12' W	.16
11/6	X			
12/7	Maple	8	N 33° 12' E	.24
6/7	Birch	7	S 25° 14' W	.38
6/5	Balsam	10	N 74° E	.18
7/8	cedar	8	N 72° 34' W	.52
	W. OAK	5	N 23° 12' W	.78
6/5	J PINE	7	N 51° 14' E	.86
	N.	18	S 35° 12' W	.33

Witness trees

Cor.	Spec.	Dbh.	Bear.	Dist.	B. or. wt.
1/16 #1	Spruce	5	N 70° E	26	wt.
1/16 #5	N.P	22	N 90° E	10	wt.

Sec. 6 T147N R27W

By - Burke + Party
1937

Witness trees (cont.)

Cor.	Spec.	Dbh.	Bear.	Dist	B. or. wt.
------	-------	------	-------	------	------------

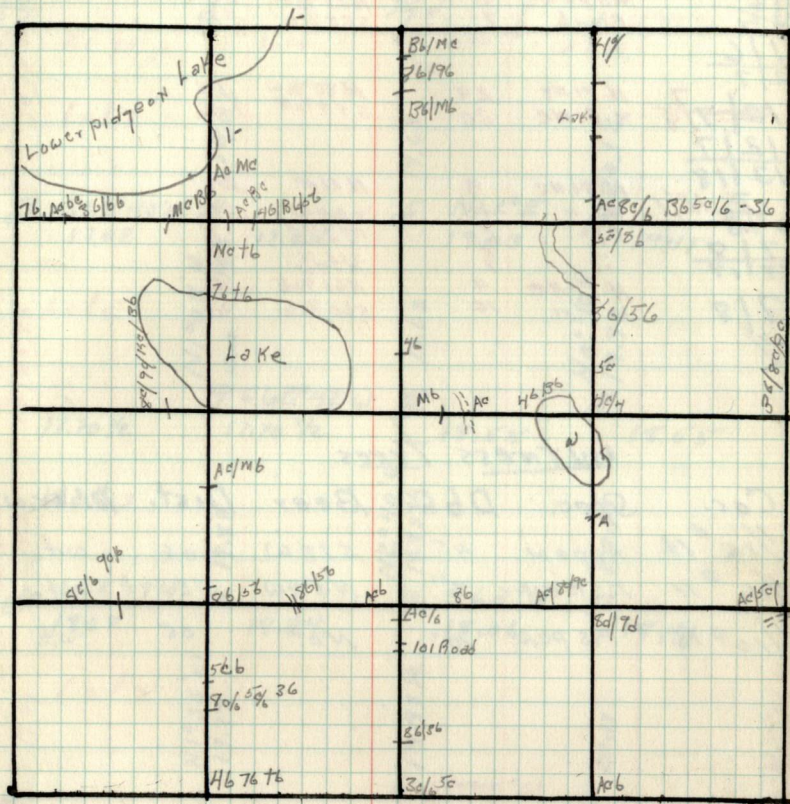
7
chains

Notes

chains

Type & Cultural Map

7



Remarks

7

Resurvey GLO corners

Cor.	Spec.	Dbh	Bear.	Dist.
6/5	PALSOFT	10	N 74° E	10
7/8	Cedar	18	S 82° 34' E	35
6/5	W. Oak	8	N 23° 12' W	75
7/8	Maple	8	N 33° 1/2° E	24
7/8	Birch	7	S 25° 1/4 W	37
12/7				
12/7	N. PINE	24	N 80° 1/2 W	.93
12/7	N PINE	20	S 55° 1/2 E	1.06
13/18				
7/8	N. PINE	8	N 17° E	.24
12/7	"	10	S 60° W	.26
7/8	Ash	4	N 54° 1/2 E	.17
12/7	"	4	S 30° E	.44
7/8	"	7	S 18° W	.72
7/8	N. PINE	4	N 61° 1/2 E	.26
7/8	"	10	S 60° 1/2 W	.32

Witness trees

Cor.	Spec.	Dbh.	Bear	Dist.	B.t. or w.t.
1/16 #12	Aspen	4"	S 78° W	1.06	w.t.
1/16 #11	ASPEN	8"	N 54° W	.12	w.t.
1/16 #10	Aspen	10"	N 0°	.05	w.t.

Sec. 7. T147N R27W

BX - BALKE + Party
1937

7



Witness trees 'Cont.'

Cor.	Spec.	Dbh.	Bear.	Dist.	B.t. or w.t.
------	-------	------	-------	-------	--------------

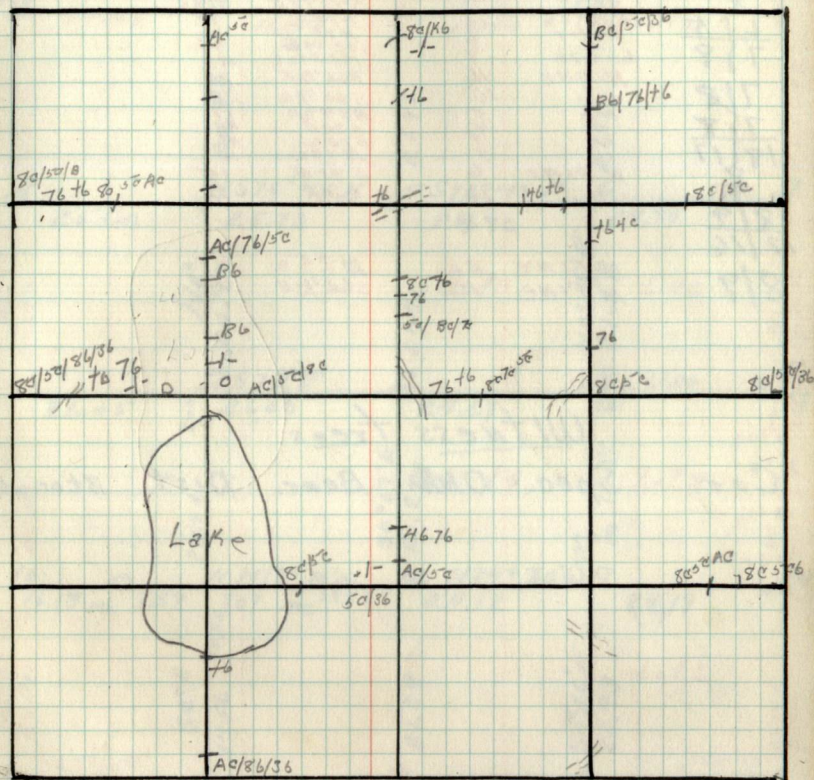
8
Chains

Notes

Chains

type & Cultural Map

8



Remarks:

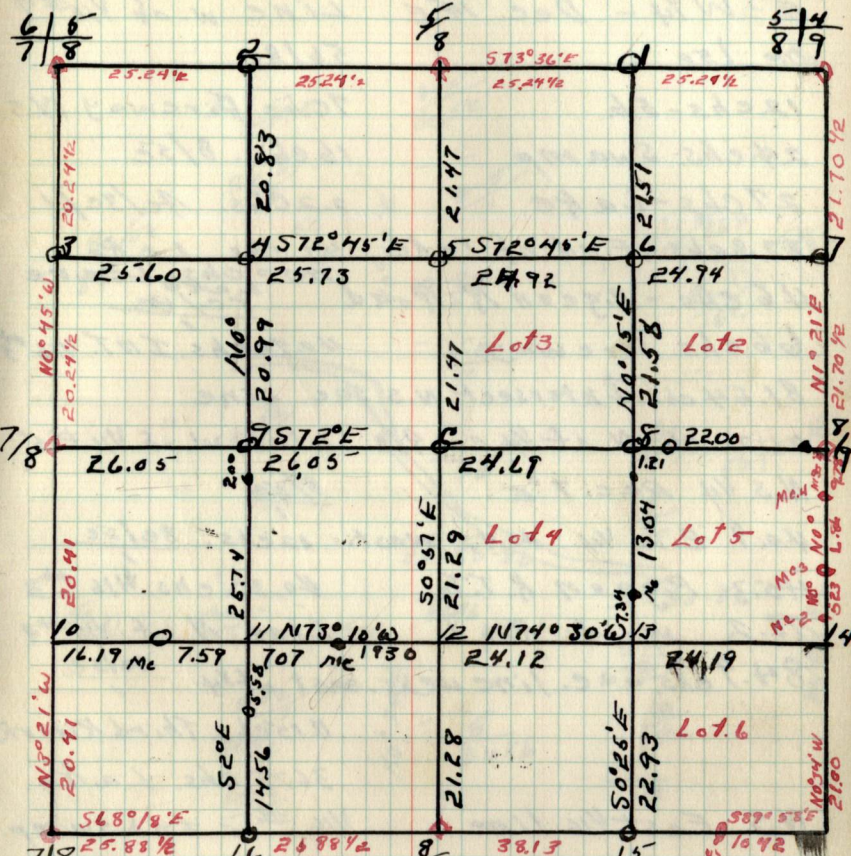
Resurvey GLO Corners

Cor.	Spec	D.b.h.	Bear.	Dist.
5/4	N.PINE	8	N 64° 15' E	.54
8/9	" "	70	S 31° E	.20 1/2
5	" "	10	S 75° W	.82 1/2
8	N.PINE	9	N 73 3/4° E	1.46
6 1/5	" "	10	S 46 1/2° E	1.85
7 1/8	Balsom	10	N 74° E	12
7 1/8	Oeder	10	N 75° E	22
7 1/8	W. OAK	10	S 52 3/4° W	47
7 1/8	N.PINE	4	N 61 1/2° E	.26
7 1/8	" "	10	S 60 1/2° W	.32
18/17	" "	5	N 54 1/2° E	19
8	Ash	4	S 30° E	44
8	" "	5	S 20° W	40
8	" "	7	N 74° W	16
8/9	N.PINE	6	S 81° E	.15
17/16	W. "	10	S 0° E	.10
8/9	N.PINE	22	N 25° W	.87
8/9	N.PINE	16	S 62 1/2° E	.60

Witness trees

Cor. Spec. D.b.h. Bear. Dist. B.t.or.wt.

By - BAIRD & Party
1937



Witness trees 'Cont'
Cor. Spec. D.b.h. Bear. Dist. B.t.or.wt.

CHAINS

E-W 1/4 - Dec. 14° E

8e 15e

12chs-56.

24chs-Swamp

27chs-Lake

32.8chs.-End of Lake

46chs.-Pigeon R. Road

66chs Fireway

81.64chs. Intersect N.S. sec. line

21.2 ch. N of 1/4 cor 9/8 Line W. of 1/16 #5

N.S. 1/4 Dec. 7° E

40.9 E.W. 1/4. 40.42 West. 12chs. 8e/5e

45.3 Pigeon R. T.T. 40.32chs. 1/16 #3

78.2 Woods Road Line N. of 1/16 #9

84.9chs. Sec. line 4chs. east of 1/4

11.15chs. Third River Rd

36.75chs. Lake

N.S. East 1/16 line 1/16 #15 Int. Swamp.

19ch. hit winter road run SE + NW

31ch. Intersect Pigeon river road

44.1ch. " N45 1/4 line 4ch. W of 1/4 9/10

46 ch. " Wood Road

84.95ch. " E+W. Sec. line 34/15. east of 1/16 #1

CHAINS

Line W. of 1/16 #7

56/8b

7chs. Fireway N.S.

16chs. 8/5e

22chs. Ac/3e/1

32chs. Lake

37.5° chs. Leave

40.90chs. INT. 1/16 #5

Line W. of 1/16 #5

8/5e

12chs. 8e/5e

40.32chs. 1/16 #3

Line N. of 1/16 #9

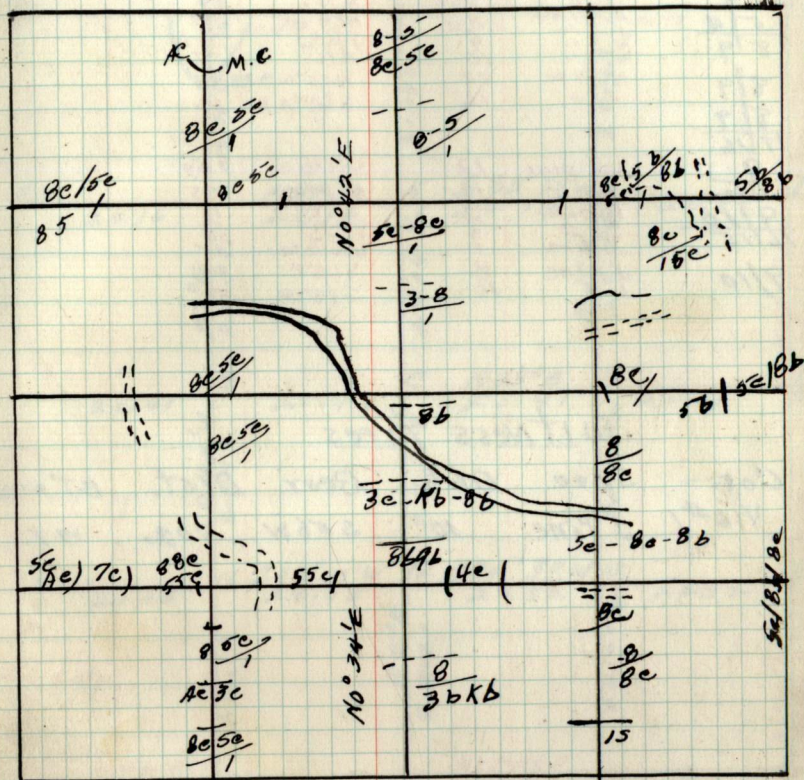
8e/5e

11.15chs. Third River Rd

36.75chs. Lake

1/16 #15 Int. Swamp.

Type & Cultural Map



REMARKS:

9 Resurvey GLO corners

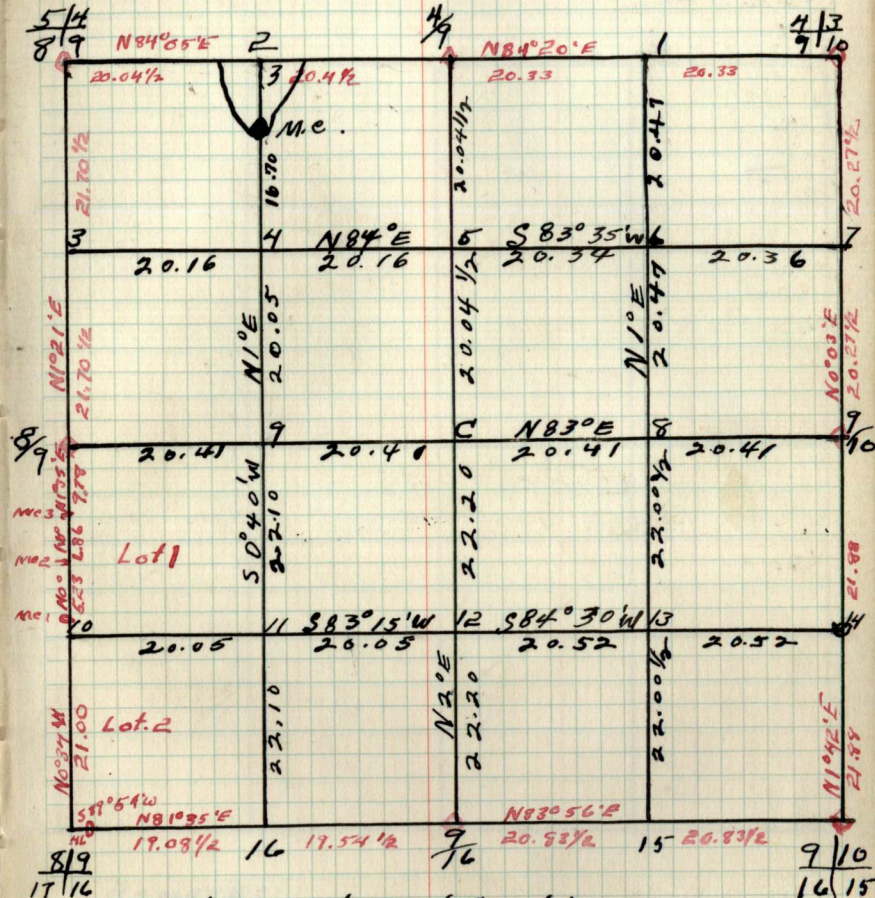
Cor.	Spec.	Dbh	Bear.	Dist.
4/13	J. Pine	10	S 27° E	.35
4/10	"	10	S 39° W	.30
4/10	"	12	N 64° 1/2 W	.14
4/10	"	12	S 80° W	.14
5/4	N. PINE	10	S 5 1/2° E	17 1/2
8/9	"	5	N 71° W	.29
8/9	N. PINE	8	N 64° 1/2 E	.54
17/16	"	8	S 31° E	.20
8/9	"	10	S 35° W	.07
8/9	N. PINE	22	N 25° W	.87
17/16	"	16	S 62° 1/2 E	.60
9/10	W. pine	12	S 26° 1/2 W	.04
7/6	N. "	14	N 62° 1/2 W	.35
9/10	N. PINE	14	N 31° E	.14
16/15	"	8	S 73° 1/2 E	.28
9/10	J. pine	7	S 73° W	.25
9/10	J. pine	8	S 68° E	.15
9/10	J. "	10	S 78° W	.27

Witness trees

Cor.	Spec.	Dbh	Bear.	Dist.	B.T or W.T
V16#1	J. Pine	10	S 56° W	.02	W.T.

9 Sec. 9. T147N R27W

BY - Dickhaus + Dolgaard + party - Habercle



Witness trees 'Cont.'

Cor.	Spec.	Dbh.	Bear.	Dist.	B.T. or W.T.
------	-------	------	-------	-------	--------------

10
chains

Notes

chains

type of Cultural Map

19

Remarks:

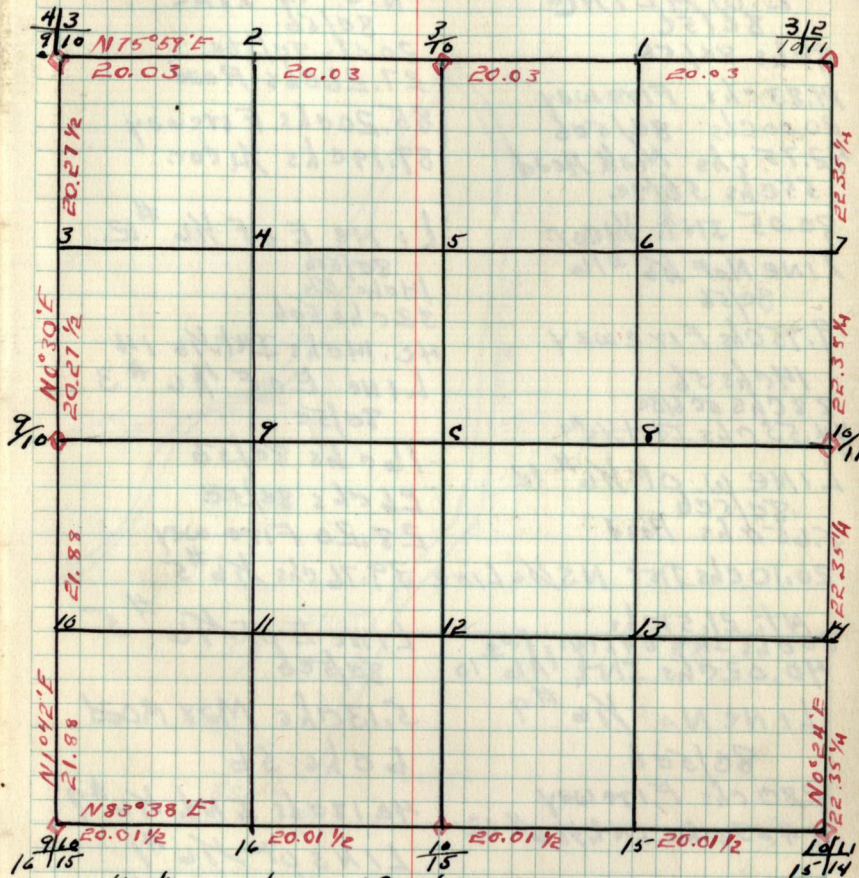
Resurvey GLO corners

Cor.	Spec.	Dbh	Bear.	Dist.
3/2	N. PINE	26	N 41° E	258
10/11	N "	26	S 79 1/4° E	512
3	J PINE	9	N 59 1/4° W	26
10	N "	10	S 42 3/4° W	49
4/3	J PINE	10	N 83 3/4° W	46
9/10	" "	10	S 27° E	38
9/10	" "	12	S 30° W	36
9/10	" "	12	S 80° W	14
9/10	J PINE	8	S 68° E	25
9/10	" "	10	S 78° W	27
16/15	N. PINE	12	N 31° E	11
10	" "	14	S 75 1/4° E	13
15	" "	7	S 75° W	21
10/11	N. PINE	14	N 50 1/2° W	25
15	" "	12	N 4° W	03
10/11	N. PINE	8	S 45 1/2° E	28
15/14	" "	6	N 18 1/4° E	75
10/11	N. PINE	10	S 41 1/2° E	33
10/11	N. PINE	4	S 39 1/2° W	53
	N. PINE	10	N 62 3/4° W	68
	N. PINE	4	S 88 1/4° E	15
	N. PINE	4	N 59 1/4° W	42

Witness trees

Cor. Spec. Dbh Bear. Dist. Other wt.

BY



Witness trees (Cont.)

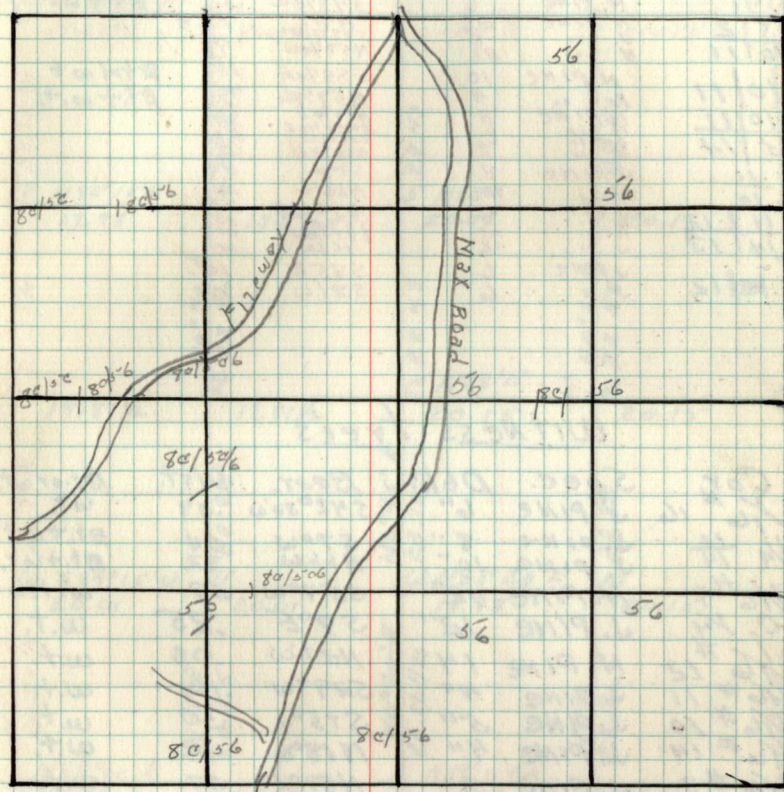
Cor. Spec. Dbh Bear. Dist. Other wt.

Chains

E.W. $\frac{1}{4}$ LINE
8c/5c
8chs 8c/5b
14.83chs Fireway
20.00chs 8c/5c
42.75chs Max Road
55chs 5b/3c
80.05 INT. $\frac{1}{4}$ COR.
LINE N OF $\frac{1}{4}$ #16
8c/5b
9.75chs Fireway
14chs 5b
28chs 5c/6c
44.53chs INT. $\frac{1}{4}$ #9
LINE W. OF $\frac{1}{4}$ #12
8c/5c
5.65chs Road
20.10chs INT NS $\frac{1}{4}$ LINE
NT. 21.57chs
30chs INT. COBINS, F.S. #10
40.02chs INT. $\frac{1}{4}$ #10
LINE N OF $\frac{1}{4}$ #9
8c/5c
280chs Fireway
4463chs INT. $\frac{1}{4}$ #12

Chains

N.S. $\frac{1}{4}$ LINE
8c/5b
20.2chs 9c/5b
27.26chs Road
85.20chs Fireway
89.19chs $\frac{1}{4}$ COR.
LINE E OF $\frac{1}{4}$ #12
8c/5b
14chs 5b
52chs 5b
40.14chs INT. $\frac{1}{4}$ #14
LINE E OF $\frac{1}{4}$ #3
8c/5c
16chs 8c/5b
26chs 8c/5c
28.20 Fire way
39.76chs $\frac{1}{4}$ #5
LINE E OF $\frac{1}{4}$ #5
8c/5c
5.13chs Max Road
6chs 5b
40180chs INT. $\frac{1}{4}$ #7
LINE S OF $\frac{1}{4}$ #1
5b



REMARKS:

11 Resurvey GLO CORNERS

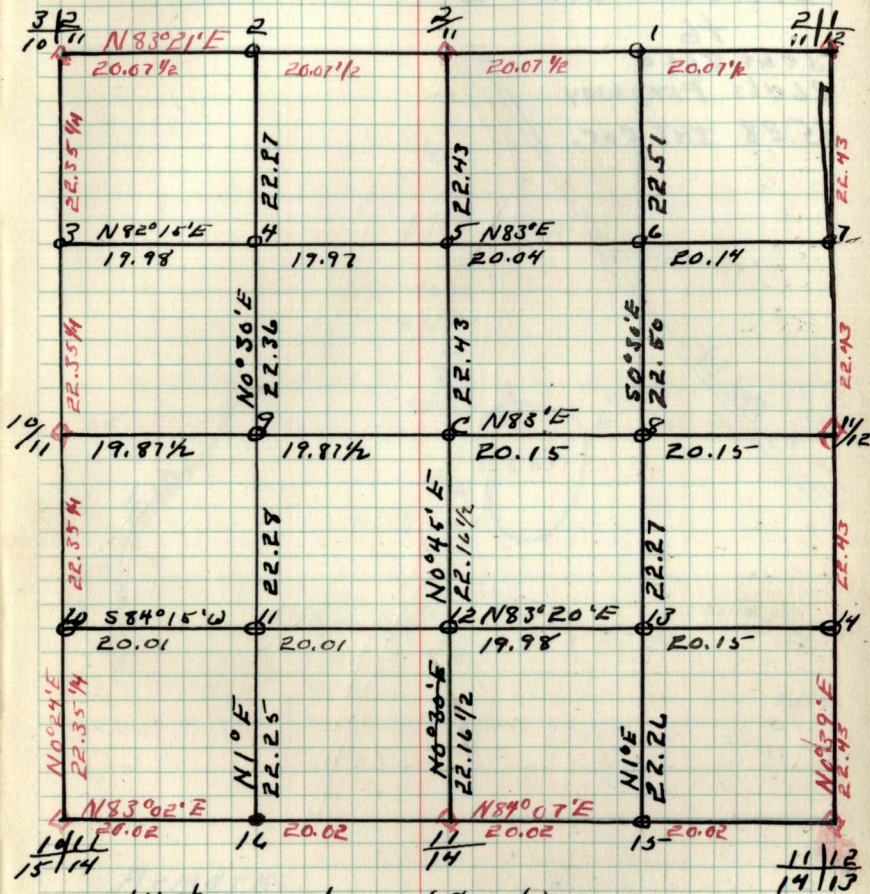
Cor.	Spec.	Dbh	Bear.	Dist.	
2/11	J. PINE	12	N 83° 21' E	15.4	
11/12	"	14	S 73° 44' W	7.3	
	"	9	N 73° 42' W	4.6	
2	N. PINE	12	N 77° 4' E	.76	B.t. w.t.
3/11	N. PINE	6	S 43° 1/2' W	.50	B.t. w.t.
3/2	N. PINE	26	N 41° E	2.28	
10/11	J. "	26	S 47° 30' E	.42	
	"	26	N 57° 44' W	.16	
10/11	N. PINE	10	S 58° 1/4' E	15	B.t. w.t.
10/11	N. PINE	8	N 59° 1/4' W	.42	B.t. w.t.
15/14	"	8	N 83° E	.75	
11	J. PINE	8	S 31° 1/2' E	.53	
14	"	8	N 62° 4' W	.68	
11/12	J. PINE	8	S 7° W	.04	
14/13	"	10	N 66° W	.32	
12	J. PINE	11	N 39° 1/2' E	.35	
	"	12	S 24° E	.23	
	"	12	S 83° 3/4' W	.07	
	"	6	N 43° W	.60	
	J. PINE	6	S 85° E	.10	
	"	6	S 81° W	.07	

Witness trees

Cor.	Spec.	Dbh.	Bear.	Dist.	B.t. or w.t.
1/6 # 16	J. PINE	6"	S 42° 30' W	.09	w.t.
1/4 # 14	J. PINE	8"	S 7° W	.04	B.t. w.t.
1/6 # 9	J. PINE	10"	N 66° W	.72	B.t. w.t.
C. 1/4	N. PINE	12"	S 54° W	.09	w.t.
1/6 # 14	J. PINE	12"	S 9° E	.25	w.t.
1/6 # 12	N. PINE	14"	N 27° W	.08	w.t.
1/6 # 11	J. PINE	4"	S 29° W	.10	w.t.
1/6 # 10	J. PINE	5"	S 75° W	.50	w.t.
1/6 # 14	J. PINE	4"	N 18° W	.12	w.t.
1/6 # 3	J. PINE	8"	N 89° E	.07	w.t.
1/6 # 5	J. PINE	14"	N 53° W	.13	w.t.
1/6 # 7	J. PINE	6"	N 67° E	.57	w.t.
1/6 # 2	J. PINE	10"	S 78° E	.02	w.t.
1/6 # 1	J. PINE	18"	S 74° E	20.	w.t.
1/6 # 4	J. PINE	12"	N 72° W	.15	w.t.
1/6 # 8	J. PINE	6"	W. Est.	.03	w.t.
1/6 # 6	J. PINE	6"	S 3° W	.13	w.t.
1/6 # 15	J. PINE	6"	N 82° E	.02	w.t.
1/6 # 13	J. PINE	6"	E 85° E	.03	w.t.

Sec. 11. T 147N R 27W

BY - Haberle + Party



Witness trees (Cont.)
 Cor. Spec. Dbh. Bear. Dist. B.t. or. w.t.

12

Notes

chains

chains

Line w. of #6 #12

+6

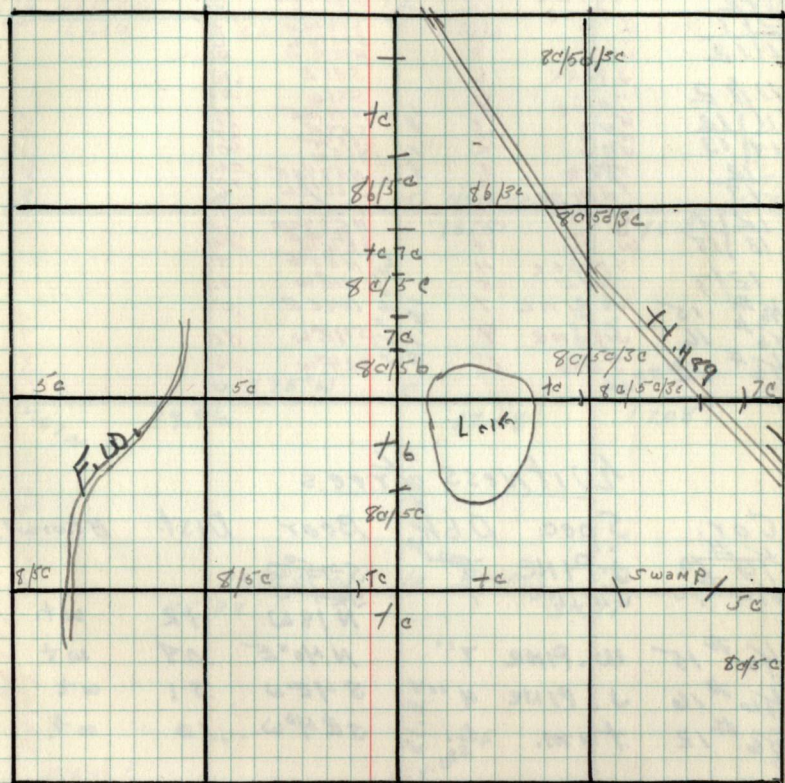
3chs 8/5a

26chs Fireway

35.28 INT cor.

Type + Cultural Map

12



Remarks:

12 Resurvey BL Corners

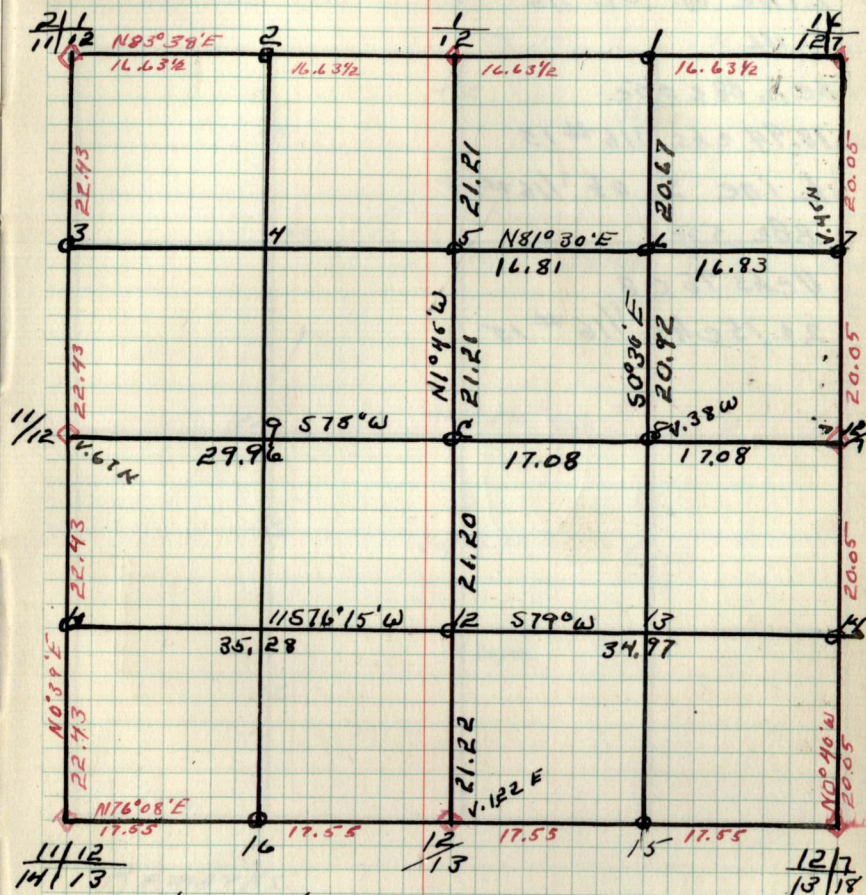
Cor.	Spec.	D.b.h.	Bear.	Dist.
16	PINE	16	S 75° 22' E	.52
12/7	"	14	S 31° 34' E	.40
12	"	10	N 53° 34' E	.28
12	"	12	N 46° 34' W	.29
21/1	TAM	4	N 51° 2' E	1.52
11/12	J. PINE	12	S 31° 14' W	.57
11/12	"	12	N 5° 0' E	1.54
11/12	"	12	S 75° 14' W	.72
11/12	"	14	N 75° 2' E	.68
11/12	"	9	N 75° 2' E	.46
11/12	J. PINE	6	S 85° E	.12
11/12	"	6	S 81° W	.07
11/12	"	11	N 37° 2' E	.35
11/12	"	12	S 54° E	.57
11/12	"	12	S 53° 14' W	.40
12	TAM	3	N 58° 14' E	.24
13	TAM	3	S 66° 14' W	.19
12/7	J. PINE	3	N 0° E	.14
13/18	"	3	N 67° 12' W	.32
12/7	"	10	S 24° 18' E	.27
12/7	"	14	S 24° 18' E	.14
46 # 15	Spruce	4	N 57° 0' E	.39
46 # 16	"	5	N 18° W	.32
46 # 12	W. PINE	7	N 40° E	.08
46 # 16	J. PINE	9	S 42° W	.31
46 # 12	TAM.	6	S 24° W	.10

Witness trees

Cor.	Spec.	Dbh	Bear.	Dist.	B.t. or wt.
46 # 10	J. PINE	4"	S 75° 0'		
46 # 10	J. PINE	4"	N 18° W	12	wt.
46 # 15	W. PINE	7"	N 40° E	.08	wt.
46 # 16	J. PINE	4"	S 42° W	.31	wt.
46 # 12	TAM.	6.	S 24° W	.10	wt.

Sec. 12. T147N R27W 12

By - Balke + Party
1936



Witness trees (Cont.)

Cor. Spec. Dbh. Bear. Dist. B.t. or W.t.

chains

chains

Line W. of $\frac{1}{16}$ #14

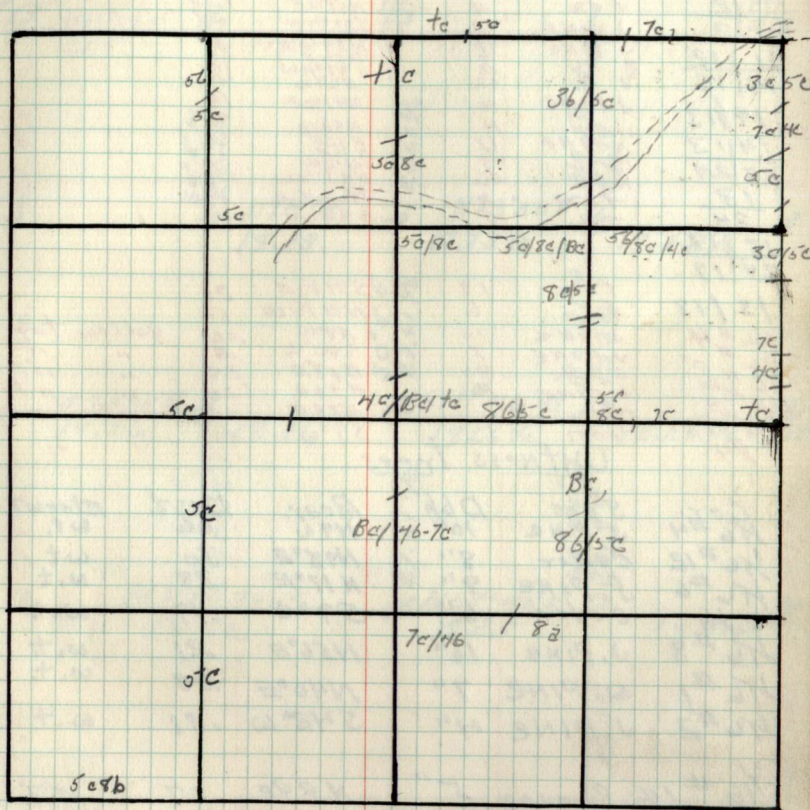
Tc 46

8 ch. 88 & 55e

10.94 chs. $\frac{1}{16}$ #13Line S. of $\frac{1}{16}$ #13

88e 55e 1

11 chs 76 & 8

20.15 chs. $\frac{1}{16}$ #15

Remarks:

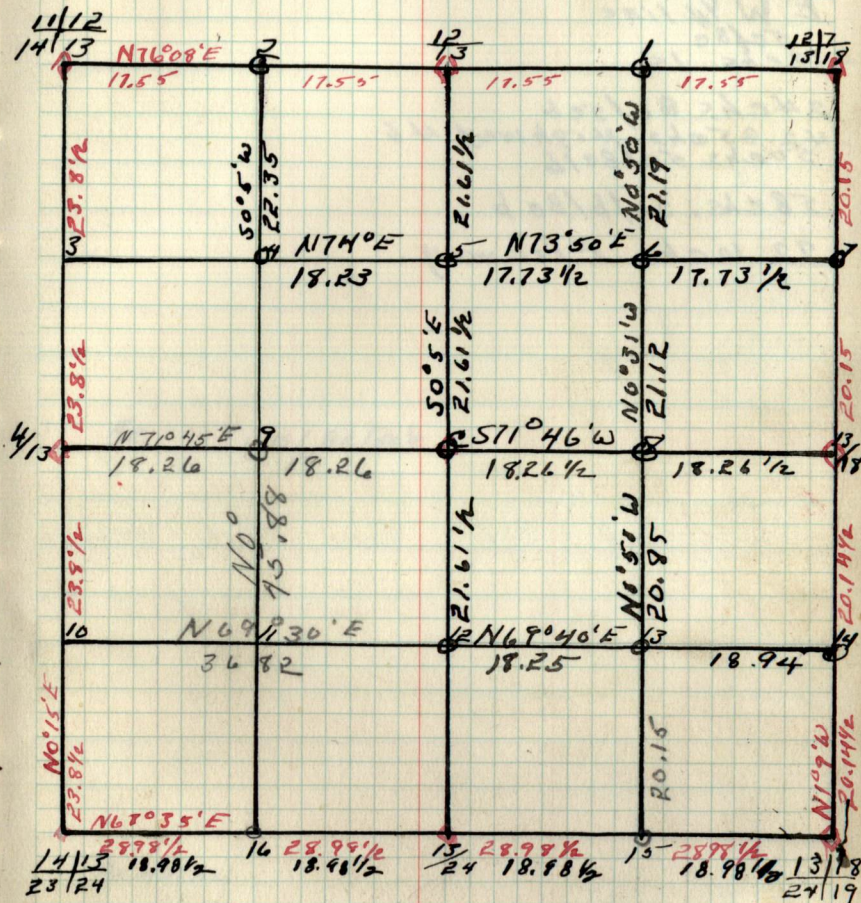
Resurvey G.L.O. Corners

Cor.	Spec.	Dbh	Bear.	Dist.
12/17	J PINE	36	N60°E	1.14
13/18	" "	36	N51°E	.35
12/13	" "	14	S21°W	.54
11/12	Tam	4	N51°E	1.52
14/13	J PINE	12	S81°4'W	.57
14/13	" "	14	N39°1/2'E	.35
14/13	" "	12	S54°1/2'E	.23
14/13	" "	12	S83°3/4'W	.37
23/24	" "	12	N63°W	.40
13/24	J PINE	10	N47°1/2'E	.18
24/19	" "	11	N82°W	.32
13/19	" "	17	S31°E	.13
24/19	" "	26	S21°1/2'W	.24
13/19	Tam	5	N83°1/2'W	1.75
24/19	Tam	5	N50°3/4'E	.50
13/18	Tam	18	S31°1/2'E	.26
14/18	J PINE	10	N57°1/4'W	.60
14/18	J PINE	7	N9°W	.06
14/18	J PINE	9	S90°W	.28
14/18	J PINE	7	N1°E	.21
14/18	J PINE	6	N56°E	.10
14/18	Cedar	6	N78°E	.49
14/18	Cedar	6	S9°W	.49

Witness trees

Cor.	Spec.	Dbh	Bear.	Dist.	stor wt.
14/18	J. PINE	10"	N9°W	.06	w.t.
14/18	Cedar	8"	N18°E	.10	w.t.
14/18	J. PINE	9"	N17°E	.28	w.t.
14/18	Cedar	6"	S9°W	.49	w.t.
14/18	J. PINE	16"	N56°E	.21	w.t.
14/18	W. PINE	7"	N40°E	.08	w.t.
14/18	J. PINE	4"	S42°W	.31	w.t.
14/18	Spruce	5"	N89°E	.07	w.t.
14/18	Red Pine	10"	S33°30'E	.65	B.T. & W.T.
14/18	Red Pine	12"	N17°W	.36	B.T. & W.T.
14/18	Red Pine	12"	S57°E	.12	w.t.

By Haberle



Witness trees (cont.)
 Cor. Spec. Dbh. Bear. Dist. B.T. or wt

14

Notes

chains

chains

E W 1/4 line
 5c/bc
 19chs. 15

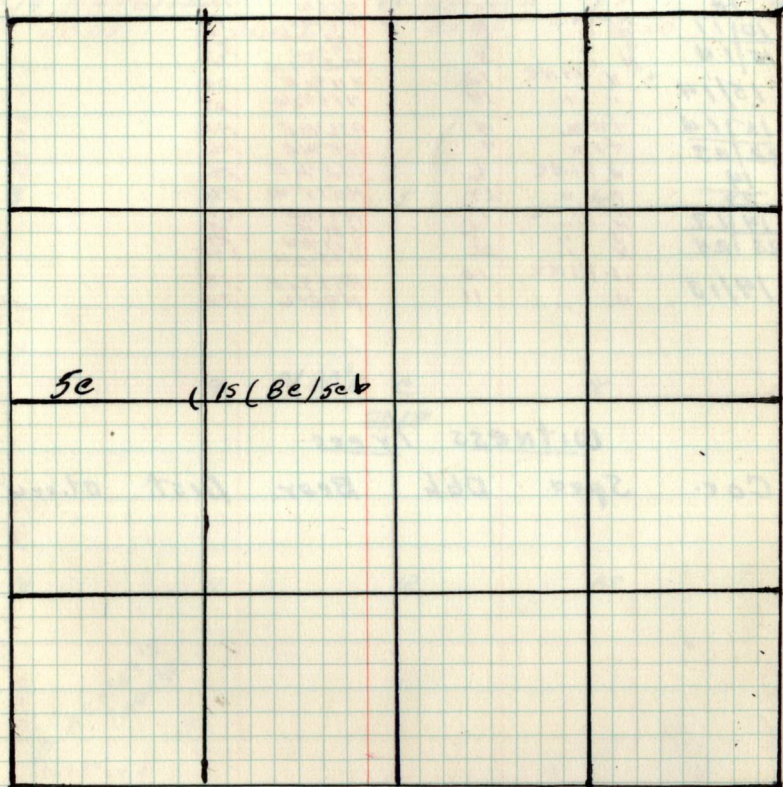
24chs. Be/seb
 42.85chs. Highway 46
 50chs. 5c/Be/b

58chs. 5c/b/Be/b

72.10chs. Fireway

Type of Cultural Map

14



Remarks:

14

Resurvey GLO corners

Cor.	Spec	Dbh	Bear.	Dist
11/12	J. PINE	11	N 34 1/2 E	33
14/13	J. PINE	12	S 34 1/2 W	37
11	J. PINE	8	N 63 W	26
14	N. "	10	S 70 W	04
10/11	N. PINE	8	N 66 W	.32
15/14	N. "	8	N 84 E	.75
15/14	N. "	8	S 34 1/2 E	.53
15/14	N. PINE	12	N 63 1/2 W	.63
15/14	" "	14	N 11 1/2 E	.04
15/14	" "	14	N 8 1/2 W	.29
15/14	farm.	4	N 46 1/2 E	.42
22/23	farm.	4	S 25 1/2 E	.46
14	J. PINE	6	S 32 1/2 E	.27
23	N. "	24	N 0 15' W	.79
14/13	N. PINE	17	N 4 1/2 E	.67
23/24	N. "	5	S 31 E	.24
14/13	N. "	26	N 83 1/2 W	1.75
14/13	J. PINE	10	N 47 1/2 E	.18
14/13	J. "	11	N 82 W	.32

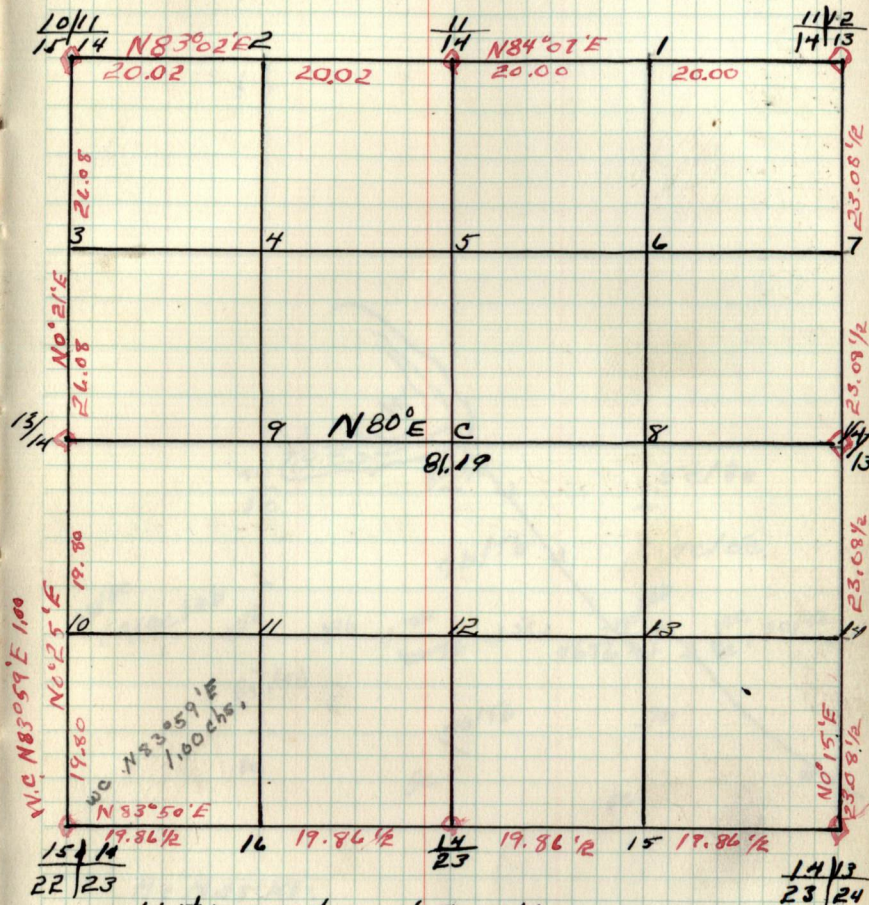
Witness trees

Cor. Spec. Dbh Bear. Dist. Bt. or wt.

Sec. 14. T147N R27W

14

BY Haberkle



Witness trees' Cont!

Cor. Spec. Dbh Bear. Dist Bt. or wt.

15

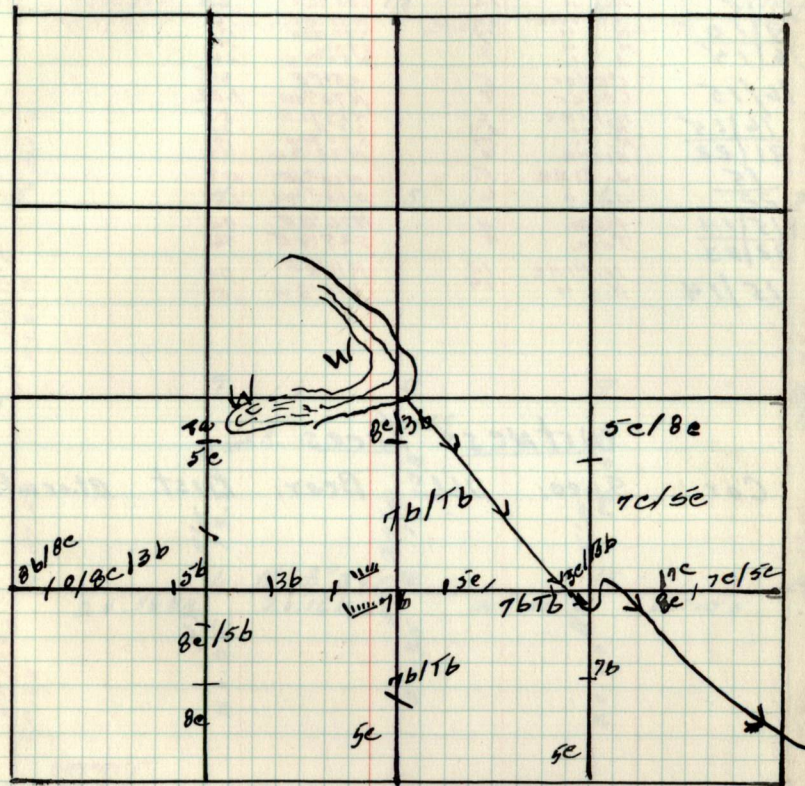
chains

Notes

chains

Type & Cultural Map

15



Remarks:

15

Resurvey GLO CORNERS

Cor.	Spec.	Dbh.	Bear.	Dist.
10/11	N. PINE	8	N 18 1/2 E	.53
15/14	"	6	S 37 1/2 W	.53
10	"	8	N 62 1/4 W	.68
15	N. PINE	14	N 7 0 W	.03
15	"	12	S 45 1/2 E	.28
9/10	N. PINE	12	N 31 1/2 E	.18
16/15	"	14	S 73 3/4 E	.24
16/15	"	7	S 73 W	.26
16/15	Cedar	5	S 54 E	.65
16/15	Cedar	7	N 70 1/4 W	1.22
16/15	N. PINE	6	N 82 1/2 E	.65
21/22	"	4	S 7 E	.21
15	BITCH	14	S 77 3/4 W	.93
22	J. PINE	5	N 32 1/2 W	.08
15/14	"	6	N 12 3/4 E	.60
22/23	Tam.	4	S 15 3/4 W	.46
15/14	Tam.	4	N 76 1/2 E	.42
15/14	N. PINE	12	S 25 1/4 E	.46
15/14	N. "	14	N 11 1/2 E	.04
	"		N 78 1/2 W	.29

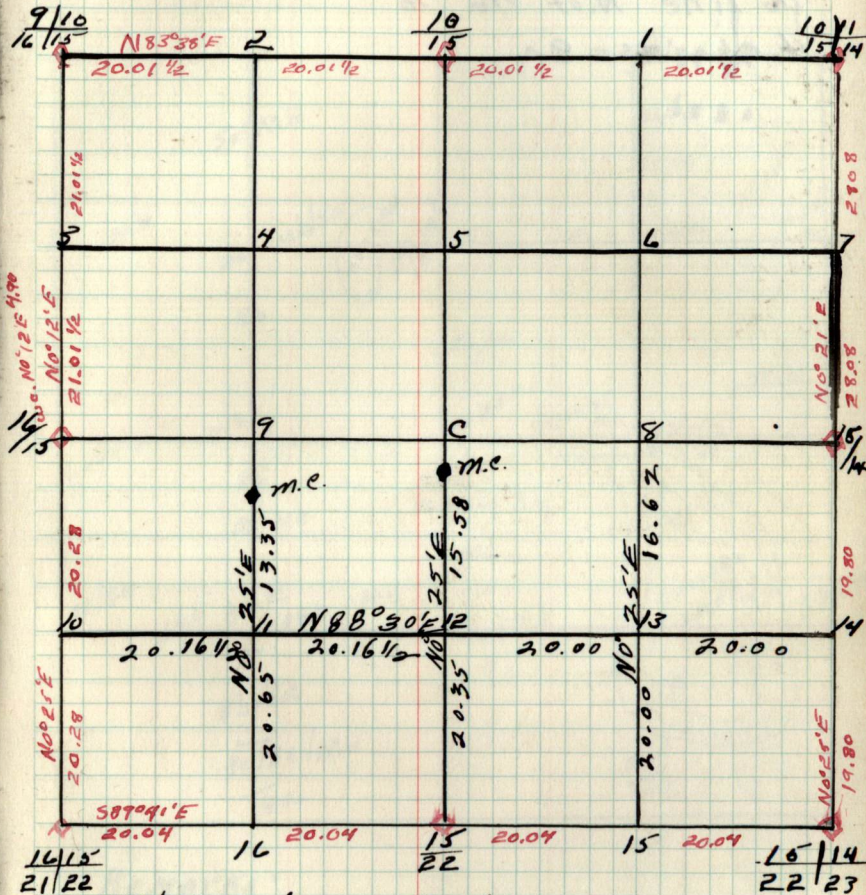
Witness trees

Cor. Spec. Dbh. Bear. Dist. Rt. or wt.

Sec. 15 T147N R27W

B4

15



16 Notes
chains chains

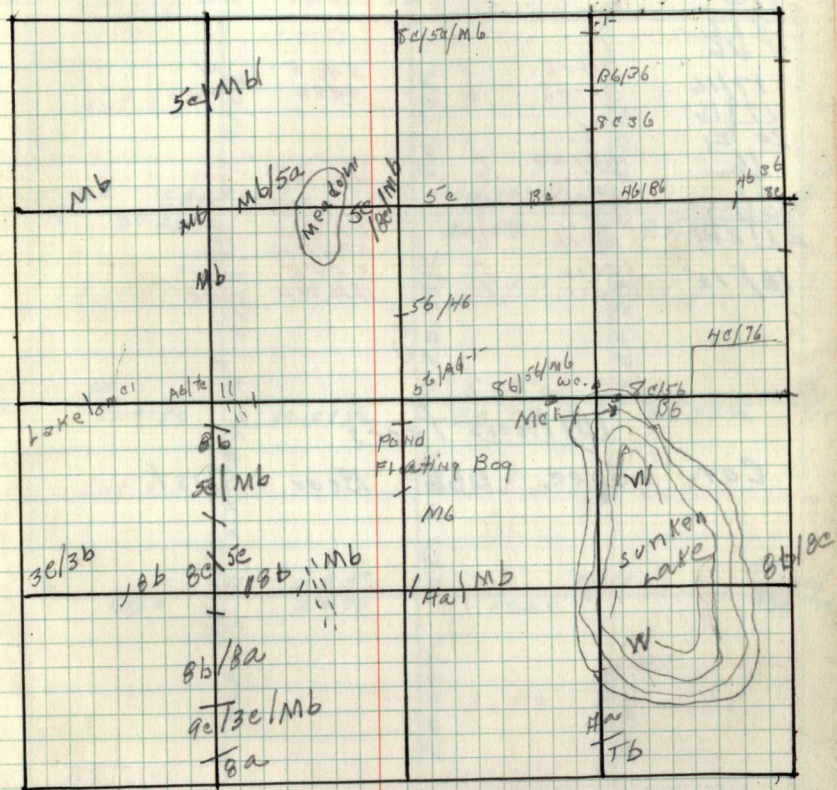
1/16 line N. of 1/16 #16

4 chains = 8a

1111

Type & Cultural Map

16



Remarks:

Cor. 16

Resurvey GLO Corners

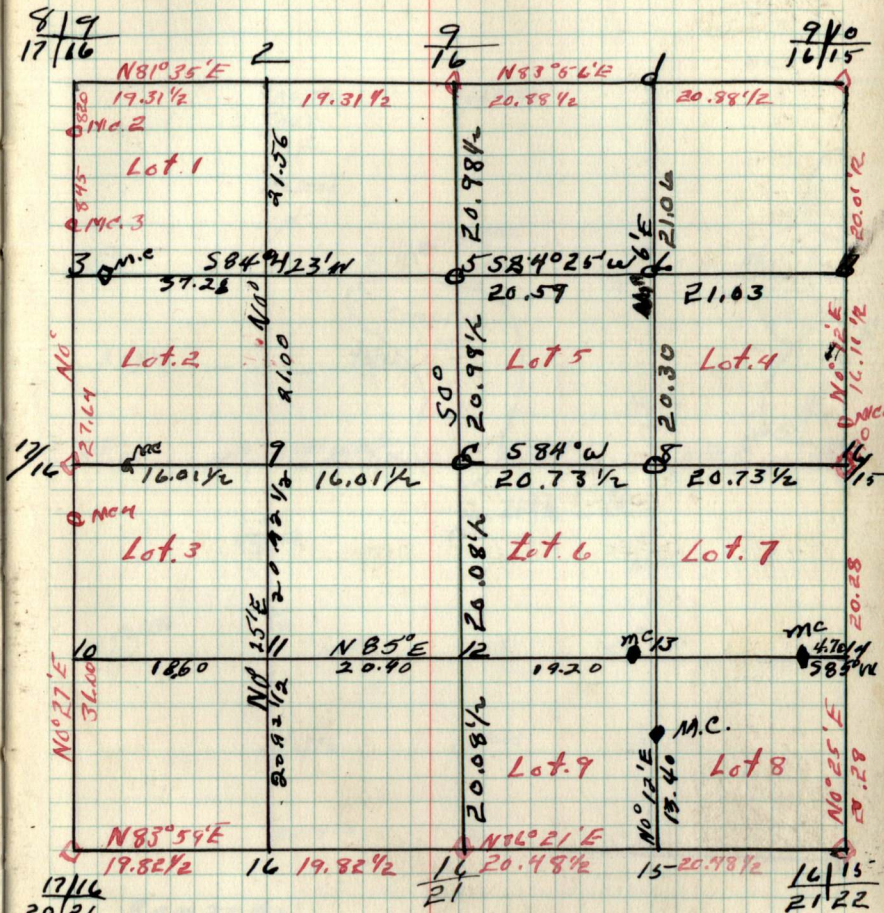
Cor.	Spec	Dbh	Bear	Dist
9/10	N. PINE	12	N55°E	16
16/15	N. "	14	S73°W	18
9/10	N. "	8	N50°E	25
16/15	N. "	8	N50°E	25
7/6	W. PINE	12	S26°W	1.04
7/6	N. "	14	N62°W	35
8/9	X			
17/16	Birch	5	S40°E	.74
17/16	Birch	6	S23°W	1.40
20/21	X			
16	N. PINE	7	S42°W	.21
21	N. "	7	N46°W	.17
16/15	N. PINE	6	N27°E	.52
21/22	N. "	6	S70°E	.21
16/15	Birch	14	S77°W	.19
16/15	Cedar	5	N32°W	.33
16/15	Cedar	7	S54°E	6.6
16/15	Cedar	7	N70°W	1.22

Witness Trees

Cor. Spec. Dbh. Bear. Dist.

Sec. 16. T147N R27W

16

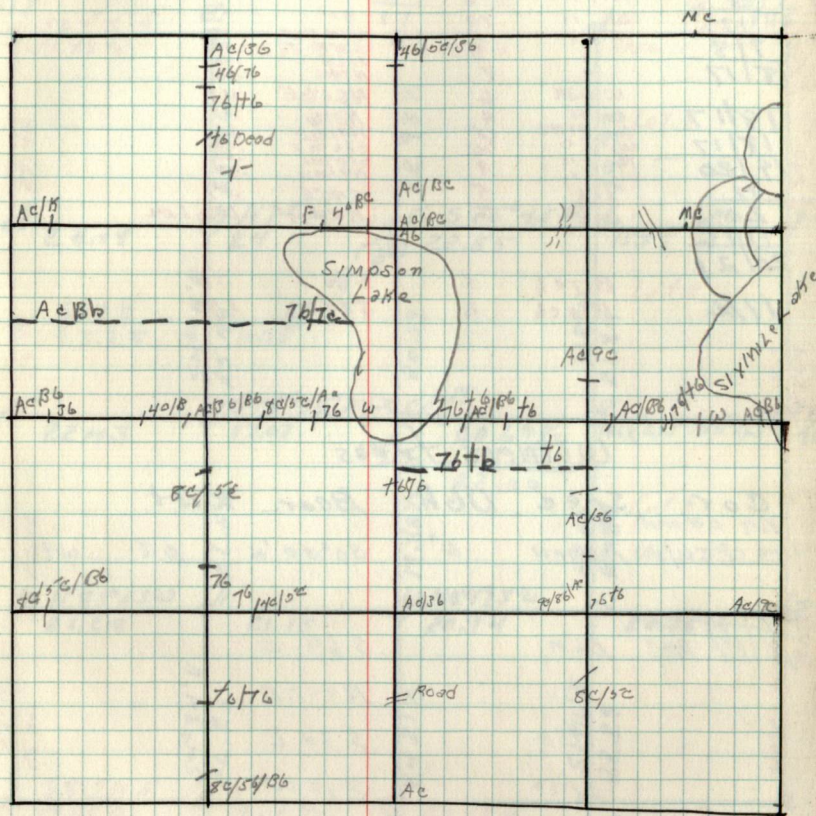
By - Balke & Party
1937

17
chains

~~Notes~~ Notes
~~chains~~ chains

Type & Cultural Map

17



Remarks:

17 Resurvey GLO Corners

Cor	Spec	Dbh	Bear.	Dist.
8/19				
17/16	N. PINE	6	S81°E	.15
9	W. "	10	S 0°	.10
17	ASH	5.2	N54 1/2 E	.19
7/8	"	5.2	S30°E	.14
18/17	"	7	S120	.10
18/17	W. OAK	6	N74°E	.16
18/17	N. PINE	4.5	N62 1/2 E	.17
19/20	W. "	16	N27°W	.11
17	N. "	8	N45°E	.61
20	W. "	8	S26 1/2 E	.29
17/16	ASH	5	S20 1/2 W	.30
20/21	ASH	6	N9 1/2 W	.44
			S40°E	.57
			N48 1/2 E	1.04
17/16	Birch	5	S40°E	.74
17/16	Birch	6	S23°W	1.90

Witness trees

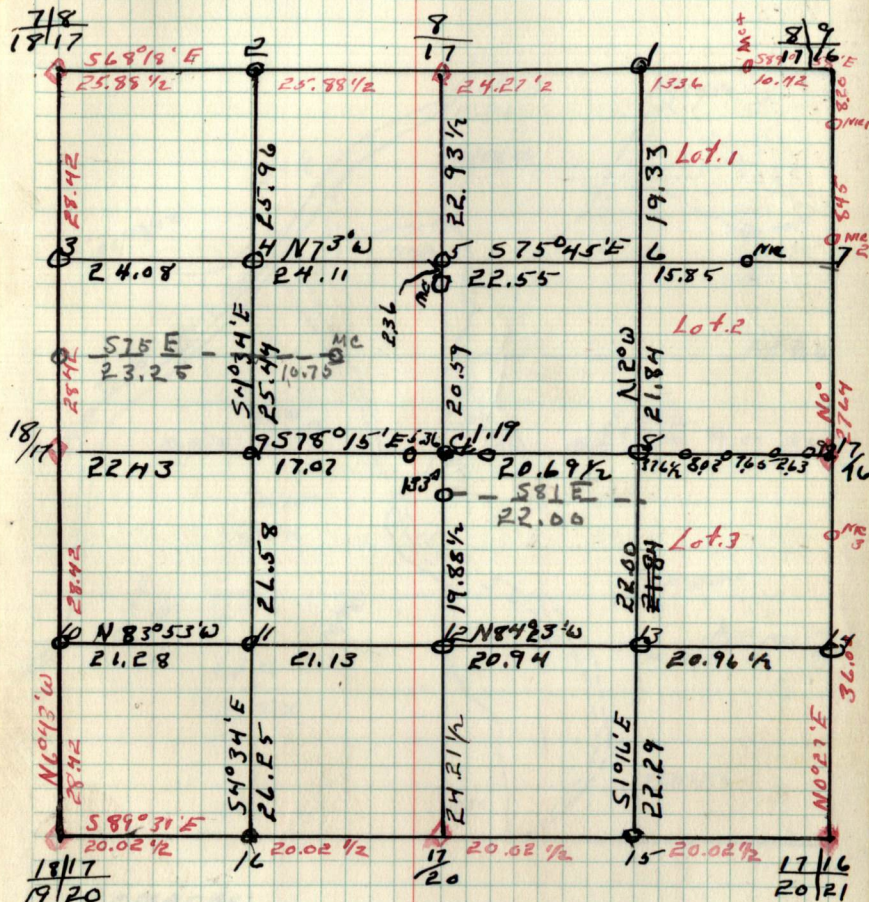
Cor.	Spec	Dbh	Bear.	Dist.	wt.
18/17	Aspen	6"	50°30'W	.08	

Cor.	Spec	Dbh	Bear.	Dist.	wt.
7/8	ELM		S 64 E		
18/17	ASH		N 54 1/2 E		
	ASH		S 30 E		
	ASH		S 12 W		
	ELM ²		N 74 W ²		

Sec. 17 T147N R27W

By Haberle

17



Witness trees cont.
Cor. Spec Dbh Bear. Dist. B.t. or wt.

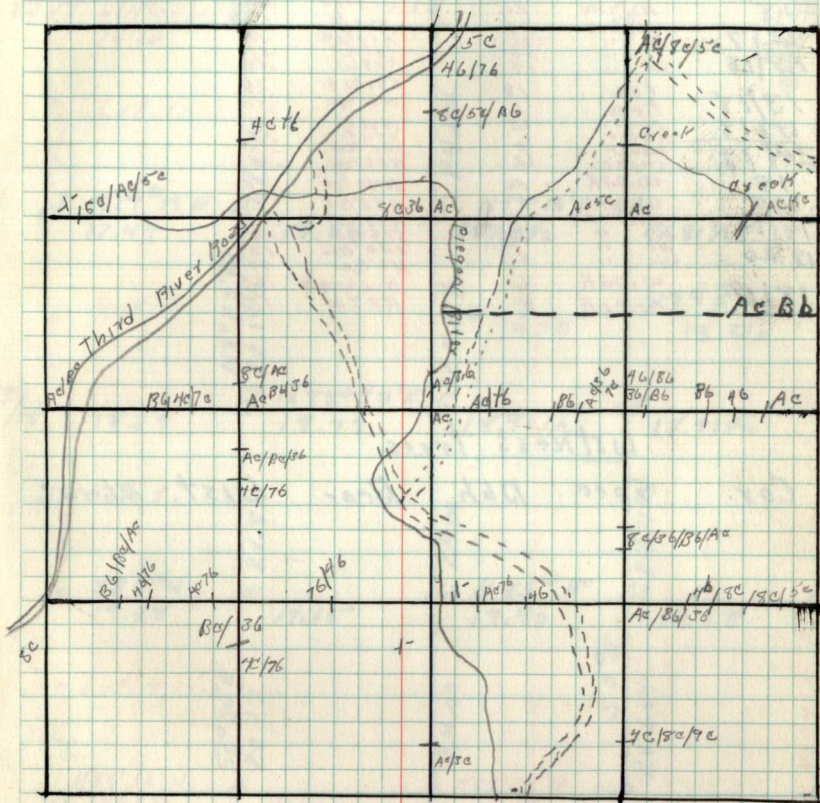
18
chains

Notes

chains

Type & Cultural Map

18



Remarks:
29 chs. N from 1/4 con. 18 to Pigeon River
As surveyed by Upper 6/23/59

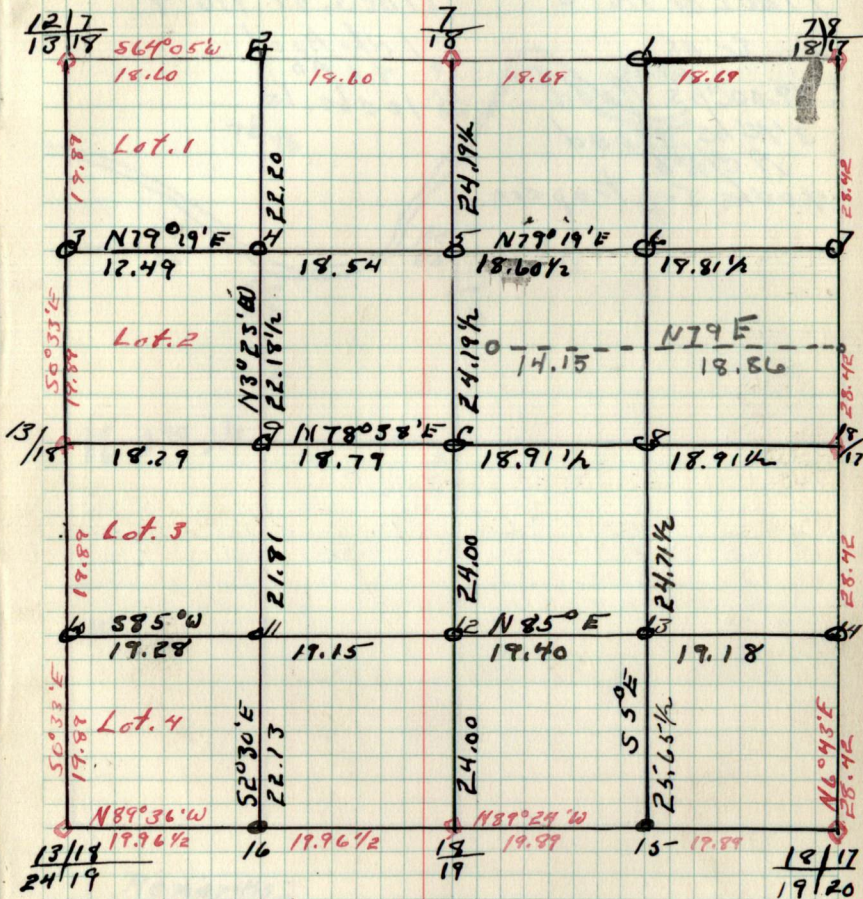
Resurvey GLD CORNERS

Cor.	Spec.	Dbh	Bear.	Dist.
718	ASH	4	N34°12'E	.19
1817	"	7	S12°W	.40
1817	"	7	N74°W	.16
18	N. PINE	24	N80°2'W	.73
18	N. PINE	20	S55°42'E	1.06
1217	N. PINE	36	N60°E	1.14
1318	N. "	10	N51°2'W	.52
1318	N. "	10	S81°42'E	.27
1318	W. "	14	S29°W	.29
1318	TAM	18	S31°42'E	.26
1318	TAM	6	N21°4'W	.50
1318	cedar	12	N41°E	.34
1318	cedar	8	S25°42'W	.38
2419	cedar	12	N28°42'W	.34
18	W. OAK	5	N40°42'E	.78
18	W. OAK	5	S52°42'E	.61
1817	N. PINE	14	N48°2'E	.61
19120	W. "	16	S20°12'W	.56
19120	W. "	8	N1°2'W	.44
18117	W. OAK	6	N124°0'E	.47
18117	W. OAK	4	NRTW	.11

Witness trees

Cor.	Spec.	Dbh	Bear.	Dist.	Stor.wt.
------	-------	-----	-------	-------	----------

By - Ba. life + Party
1937



Witness trees (Cont.)

Cor.	Spec.	Dbh	Bear.	Dist.	Stor.wt.
------	-------	-----	-------	-------	----------

19

Notes

chains

LINE East 1/16 #3

8c Ab

19.00chs Road

34chs Road

Ac/Bb

40chs Set. Temp. cor.

chains

LINES. OF 1/16 #4

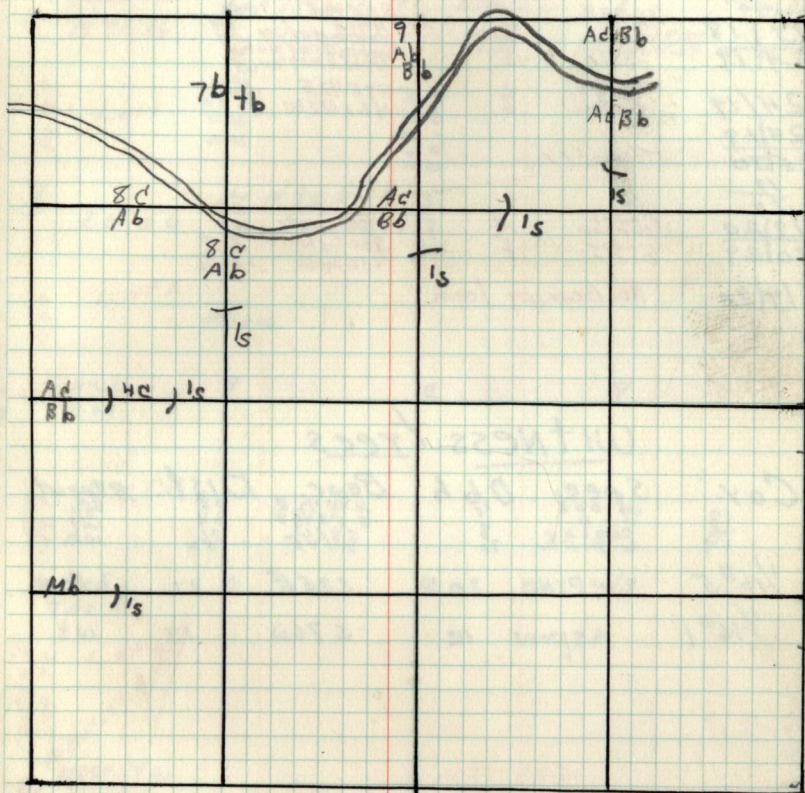
1 ch. Road

8c Ab

10chs. Is

Type & Cultural Map

19



Remarks:

19

Resurvey GLO Corners

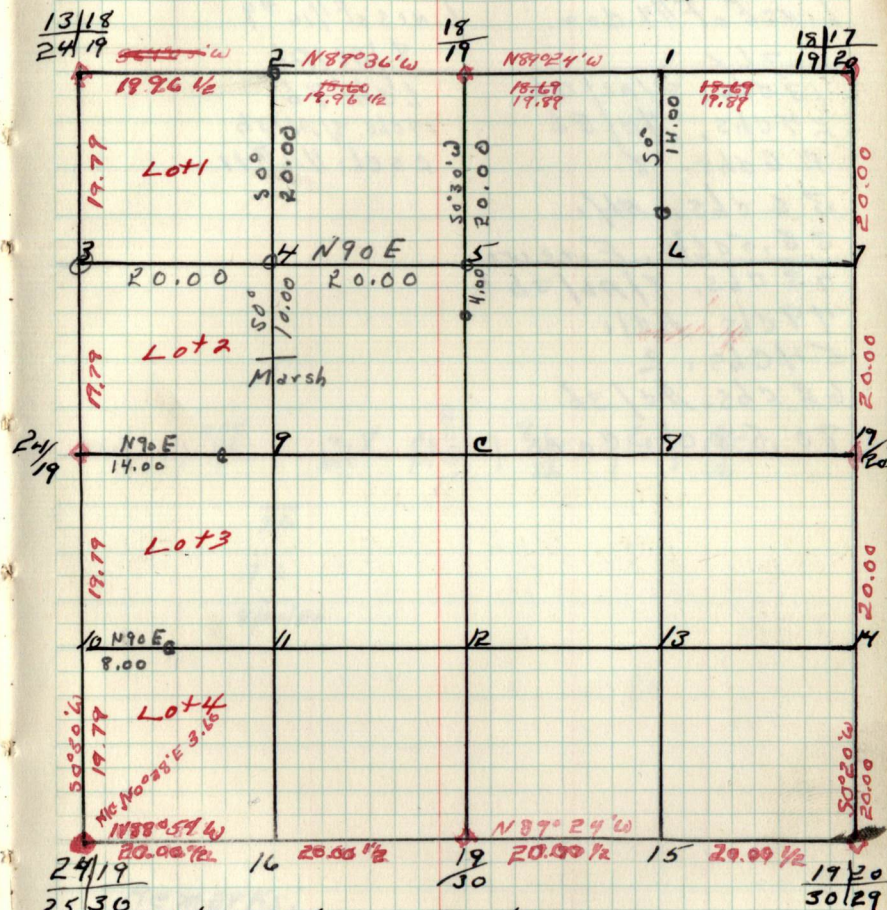
Cor	Spec	Dbh	Bear.	Dist.
18/17	N. PINE	14	N45°12'E	.64
19/20	W. "	16	S26°12'E	.50
18	W. "	8	S20°12'W	.44
19	W. oak	5	N40°12'E	.75
13/18	W. oak	5	S52°12'E	.64
24/19	Cedar	12	N41°E	.34
24/19	Cedar	12	S50°12'E	.58
24/19	Cedar	12	S50°12'E	.58
24/19	Cedar	6	S75°12'E	.31
24/19	Cedar	6	N61°12'W	.67
19				
30				
19/20	Cedar	14	N40°E	.69
30/29	Poplar	7	S54°12'E	.13
30/29	Cedar	7	S60°12'W	.25
30/29	Cedar	7	N30°12'W	.46 1/2

Witness trees

Cor.	Spec	Dbh	Bear.	Dist.	B. or wt.
18	W. oak	55	N40°12'E	78	Wt.
19	W. PINE	30	S52°12'E	64	Wt.
1/16#5	W. PINE	30	S35°E	26	Wt.
1/16#1	Aspen	12	S76°W	13	Wt.

Sec. 19 T147N R27W

19

By Haberle
1940

25/30 Witness trees 'Cont.'

Cor.	Spec.	Dbh.	Bear.	Dist.	B. or wt.
16				20.00 1/2	
19				20.00 1/2	
15				29.09 1/2	

chains

Line E of 1/4 cor.

76x
13 chs. 8/Ac/Bb

24 chs. Ad/Bb

26 chs. 8

36 chs. Ab/1

38.50 chs. Fireway

43 chs. 8/Ab/3b

49 chs. Ad/1

54 chs. R

62 chs. Ad/3b

80.58 chs cor.

chains

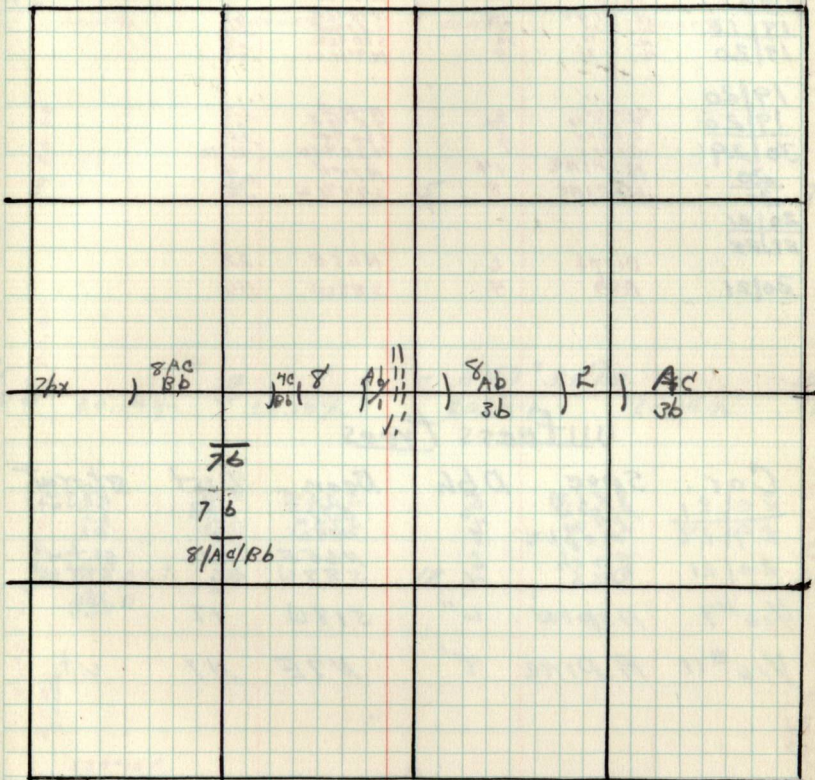
Lines of 1/16 #9

8/Ac/Bb

6 chs 76

14 chs. 8/Ab/3b

20 ch. 1/16 #11



Remarks:

20

Resurvey G.L.O. corners

Cor.	Spec	Dbh	Bear.	Dist.
17/16				
20/21				
17	Ash	5	S 40° E	.57
20	ELM	6	N 48 3/4 E	1.04
19/17	N. PINE	14	N 48 1/2 E	.61
19/20	N. "	16	S 20 1/2 W	.50
19/20	N. "	8	N 9 1/2 W	.44
19/20	Cedar	6	N 46 E	.68
19/20	Poplar	7	S 2 1/2 E	.23
30/29	Cedar	7	S 60 3/4 W	.26
20	N. PINE	14	N 30 1/4 W	.41 1/2
29	N. PINE	8	N 7 E	.09
20/21	N. PINE	8	S 4 1/2 W	.16
29/28				
20/21	Birch	6	N 65 E	.22
20/21	Ash	4	S 88 W	.46

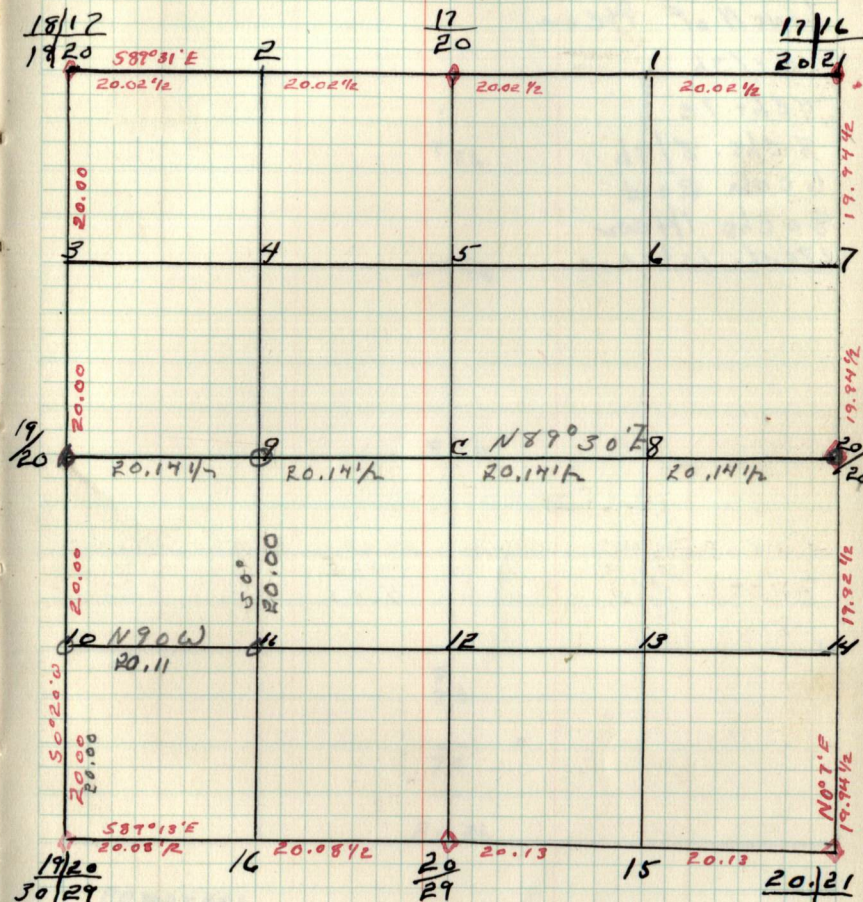
Witness trees

Cor.	Spec	Dbh	Bear.	Dist	Bt. or wt.
20/21	ELM	8 1/2	S 30 1/2 W	10 1/2	Bt. + wt.
29/28	Maple	8	N 24 W	4 1/2	Bt.
20/21	Birch	6	N 65 E	22	Bt. + wt.
20/21	Ash	4	S 88 W	46	Bt. + wt.
1/16 #9	ASPEN	6"	S 18 W	17	wt.
1/16 #11	B. PINE	8'	N 7 E	47	wt.

Sec. 20 T147N R27W

20

By Haberle 1940



Witness trees (cont.)
 Cor. Spec. Dbh. Bear. Dist Bt. or wt.

21

Notes

chains

chains

Line N of 1/4 cor

Ac/36

4 chs. 7c

8 chs. 8/8b

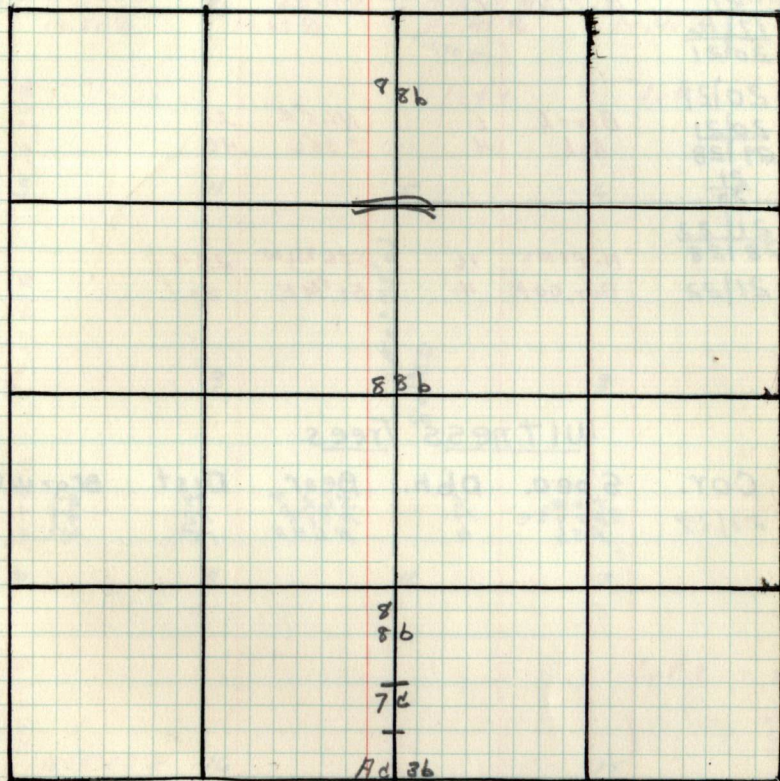
6 chs Road

8 chs 1/4 cor

170 chs w to cor

type + cultural Map

21



Remarks:

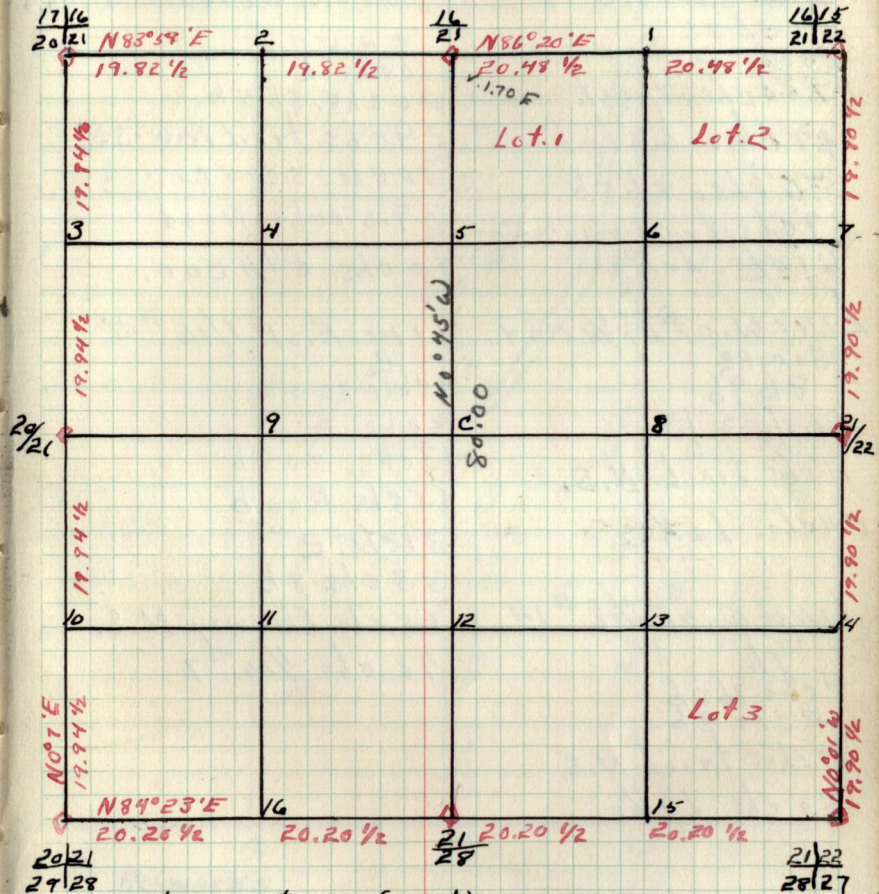
21 Resurvey GLO. Corners

Cor.	Spec.	Dbh.	Bear.	Dist.
16/15	N. PINE	3	N 27 1/2 E	.55
21/22	N. BIRCH	4	S 75 3/4 W	.17
16/21	N. PINE	7	S 42 1/2 W	.21
17/16	N. PINE	7	N 46 1/2 W	.49
20/21				
20/21	Birch	6	N 65 E	.22
29/28	Ash	4	S 88 W	.46
21/28				
21/22	N. PINE	16	S 76 3/4 W	.224
29/28	Bor. Oak	4	S 1 3/4 E	.80

Witness Trees

Cor.	Spec.	Dbh.	Bear.	Dist.	Bt. or wt.
21/28	Ham Spruce	16	S 62 1/2 W	.39	.87
	Ash	6	N 47 1/2 W	.52	.87
			N 64 E	.15	wt.

Sec 21 T147N R27W 21
By Haberle 1940.



Witness trees (cont.)
Cor. Spec. Dbh. Bear. Dist. Bt. or wt.

22

Resurvey BLO corners

Cor.	Spec.	Dbh	Bear.	Dist.
15/14	T.M.	4	N76°E	.42
22/23	T.M.	4	S25°W	.46
15	J. PINE	5	N123/4E	.08
22	J. PINE	6	S123/4W	.60
16/15	N. PINE	6	N27°E	.25
21/22	N. PINE	14	S77°W	.21
	Birch	4	N32°W	.33
21/22	N. PINE	14	S76°W	2.24
21/22	Bur. Oak	4	S1°W	.90
22/23	RP	24"	S55W	.6ch
27/26	J. PINE	5	S74°E	.16
22/23	N. PINE	16	N50°W	.85

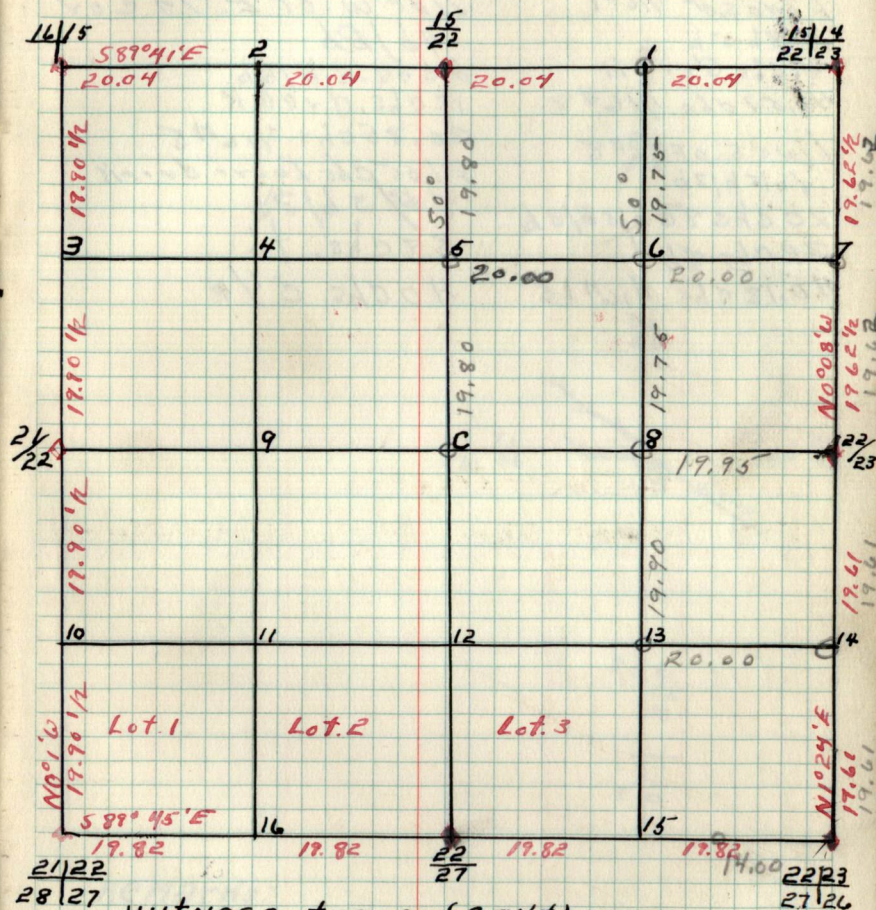
Witness trees

Cor Spec Dbh Bear. Dist. B.t. or w.t.

Sec. 22 T147N R27W

22

By Haberle F. 1939



Witness trees 'CONT.'

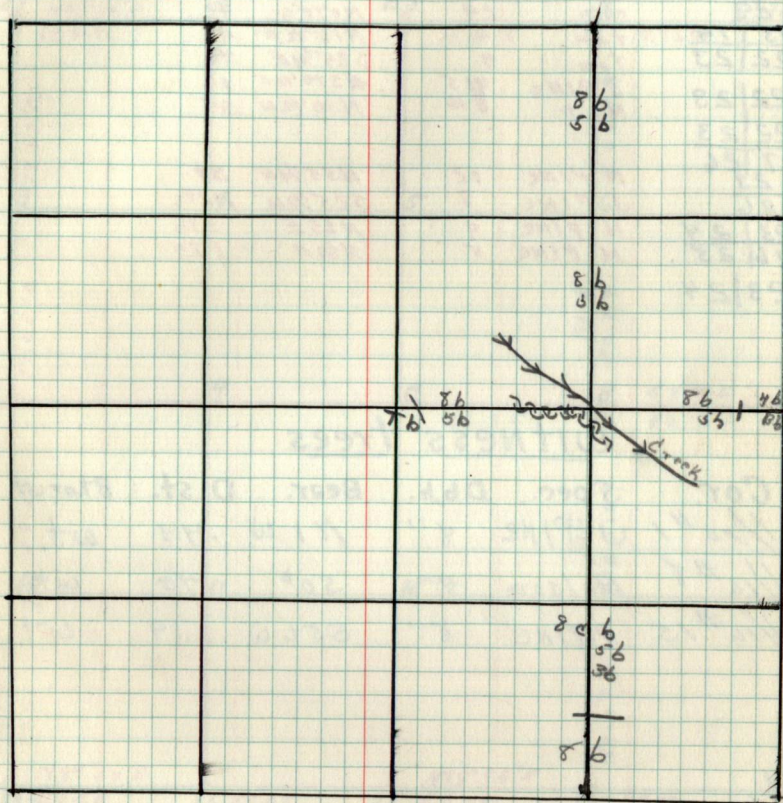
Cor. Spec. Dbh Bear. Dist. B.t. or w.t.

chains

Line S of 1/16 #1
 86 5/6
 41 chs. Creek
 41.57 chs. 1/16 #8
 Line S. of 1/16 #8
 86 5/6 1/36
 20 chs 86 5/6 1/36
 32 chs 86
 40.18 chs. 1/16 #15

chains

Line W. of E. 1/4 cor
 46 1/2
 6 chs. 86 1/56
 18 chs. Creek
 20.35 chs. 1/16 #8
 21.05 chs. Loare creek
 86 5/6 1/36
 38 chs. 76
 40 chs. 1/4



REMARKS:

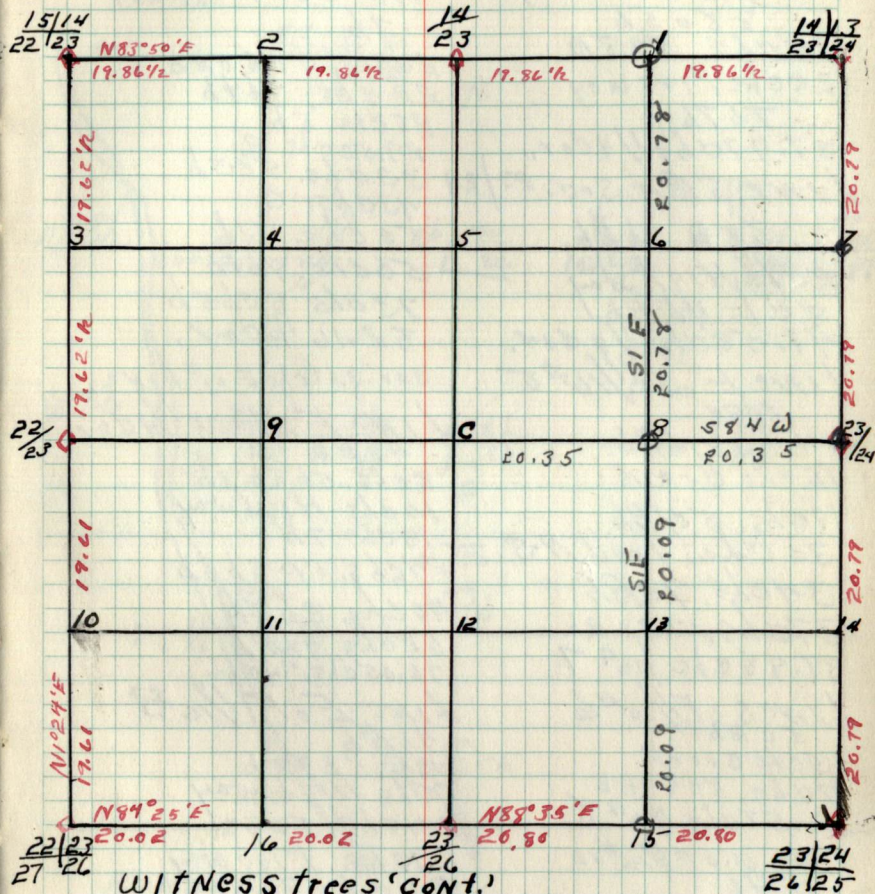
23 Resurvey GLO corners

Cor.	Spec.	Dbh.	Bear.	Dist.
14 13	N. PINE	17	N49°E	.63
23 24	N. "	5	S31°E	.73
14	N. "	26	S21°W	.84
23	N. "	26	N85°W	1.46
15 14	J. PINE	6	S32°E	.27
22 23	N. "	24	N0°15'W	.77
22 23	fam.	4	N76°E	.42
22 23	fam.	4	S25°4'E	.46
22 23	J. PINE	18.5	N57°1'E	.14
22 23	N. "	16	N30°1'W	.86
27 26	N. PINE	12	N55°4'E	.89
26	J. PINE	8	S25°1'W	.1242
23 24	N. PINE	8	N65°E	1.36
26 25	N. PINE	5	N30°E	1.29
23 24				

Witness trees

Cor.	Spec.	Dbh.	Bear.	Dist.	B. or wt.
1/16 #1	J. PINE	8"	N1°W	.48	wt.
1/16 #8	Balsom	4"	S0°	.45	wt.
1/16 #15	P. PINE	5"	S56°W	.19	wt.

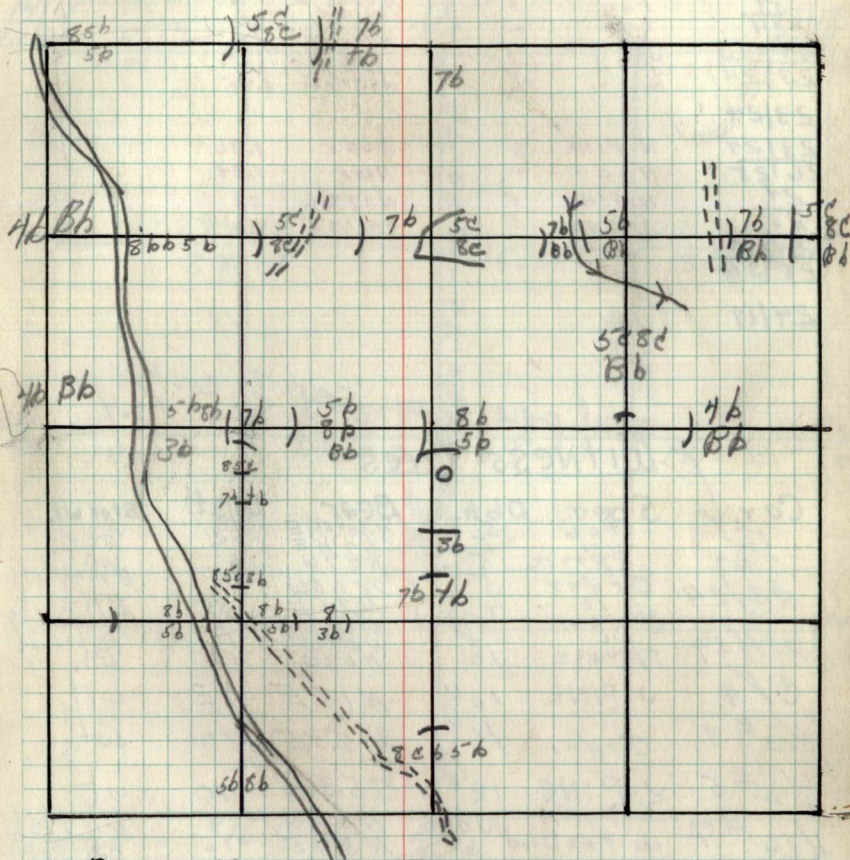
Sec. 23 T. 147N. R. 27W. 23
By Haberle 1940



Witness trees (cont.)
Cor. Spec. Dbh. Bear. Dist. B. or. wt.

23|24
26|25

chains		chains
LINE E Bot. S. 0. 13/24		LINE S of N 1/4 cor
8805b		7b
18chs. 508a		20chs. 508abb
25chs. Fireway		22chs. 767b
767b		28chs. 5b
37.97chs. 1/4 cor.		29.50chs. 2
LINE S Bot. S. 0. 23/RN		53chs. 505b
8805bBb		43chs. 0
20chs. Highway		50chs. 3b
8chs. 46Bb		56chs. 767b
41.58chs. 1/4 cor.		73chs. 8065b
LINE E of 1/16 #5		82.16 1/4 cor.
508c		cor. 3.57chs. E. of Line.
14chs. 76Bb		LINE E of W 1/4 cor.
16chs. creek		46Bb
17chs. 50/Bb		8chs. 568b3b
30chs. trail N/S		10chs. Highway
34chs. 76Bb		18chs. 7b
37chs. 508aBb		24chs. 5b 8b3b
37.98chs. 1/16 #7		40chs. 8b5b
LINE S of 1/16 #6		62chs. 46Bb
508b		76.05chs. 1/4 cor.
5chs. Creek		LINE E of 1/16 #3
7chs. 508abb		46Bb
20.57chs. 1/16 #8		6chs. 5688b
LINE W of 1/16 #12		90chs. Highway
767b		24chs. 508c
8chs. 9/3b		290bs. Fireway
15chs. 8b/5b		30chs. 7b
18.50chs. Trail		37.97chs. 1/16 #5
23chs. Highway		LINE N of 1/16 #6
31chs. Flowage		568b
		11chs. Highway
		23chs. 8154/3b
		33chs. 767b
		38chs. 815c
		39chs. 767b
		41.26chs. 1/16 #9



REMARKS:

24

Resurvey GLO CORNERS

Cor.	Spec	Dbh	Bear.	Dist.
13/18				
24/19	tom.	5"	N 50 45' E	50
13/24	tom.	5"	S 54 14' W	62
24				
14/13	N. PINE	13	N 44 E	67
23/24	N. "	5	S 31 E	18
	N. "	5	S 51 14 W	24
	N. "	26	N 83 1/2 W	1.95
23/24				
23/24	N. PINE	8	N 65 E	1.36
26/25	N. "	5	N 80 E	1.24
24	N. PINE	5	N 39 1/4 W	23
25	J. PINE	5	S 41 1/2 E	40
24/19				
25/30				
24/19				

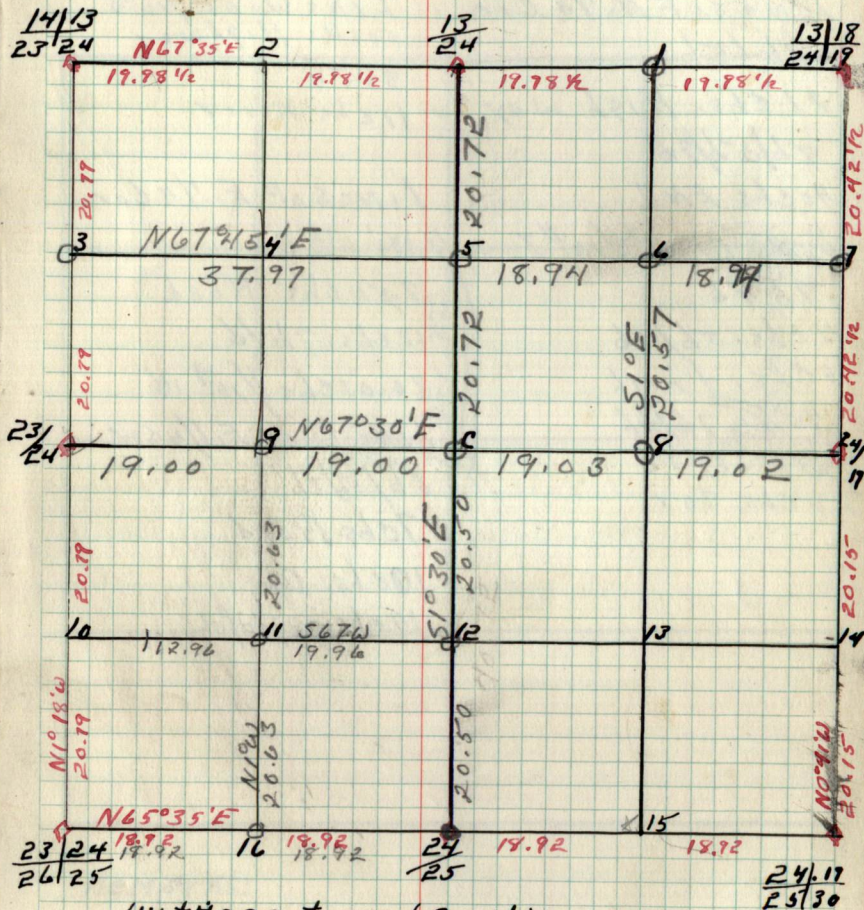
steel pipe Brass cap 1/4 cor 13/24
 Witness trees

Cor.	Spec.	Dbh.	Bear.	Dist.	B.t. or wt.
13/24	tom	5.5	N 30 3/4 E	50.2	B.t.
24	spruce	5	S 54 1/4 W	6	w.t.
23/24	cedar	5	N 87 W	11	B.t. + w.t.
	cedar	4.5	N 60 W	53	B.t. + w.t.
24/19	spruce	10	N 21 E	16	B.t. + w.t.
			S 74 E	17	B.t.
			N 61 W		B.t. + w.t.
			N 68 W		B.t.
C/4	J. PINE	10"	N 15 E	42	w.t.
1/10 # 3	cedar	11"	N 53 E	40	w.t.
1/16 # 5	J. PINE	12"	S 53 E	10	w.t.
1/16 # 7	N. PINE	10	N 65 W	8	B.t. + w.t.
1/16 # 6	J. PINE Rod	6	N 34 E	15	B.t.
1/16 # 8	J. PINE	8	N 49 E	9	B.t.
1/16 # 16	J. PINE	10"	S 79 E	.11	w.t.
1/16 # 12	tom.	5"	N 78 W	.18	w.t.
1/16 # 9	tom.	4"	N 16 W	.25	w.t.
1/16 # 11	J. PINE	8"	S. E	.01	w.t.
1/4 24/25	N. PINE	5	N 39 1/4 W	.23	B.t. + w.t.
1/4	J. PINE	5	S 41 1/2 E	.40	B.t. + w.t.

Sec. 24 T. 147. N. R. 27 W.

24

By Haberk



Witness trees. (Cont.)
 Cor. Spec. Dbh. Bear. Dist. B.t. or wt.

24/19
25/30

25

Notes

chains

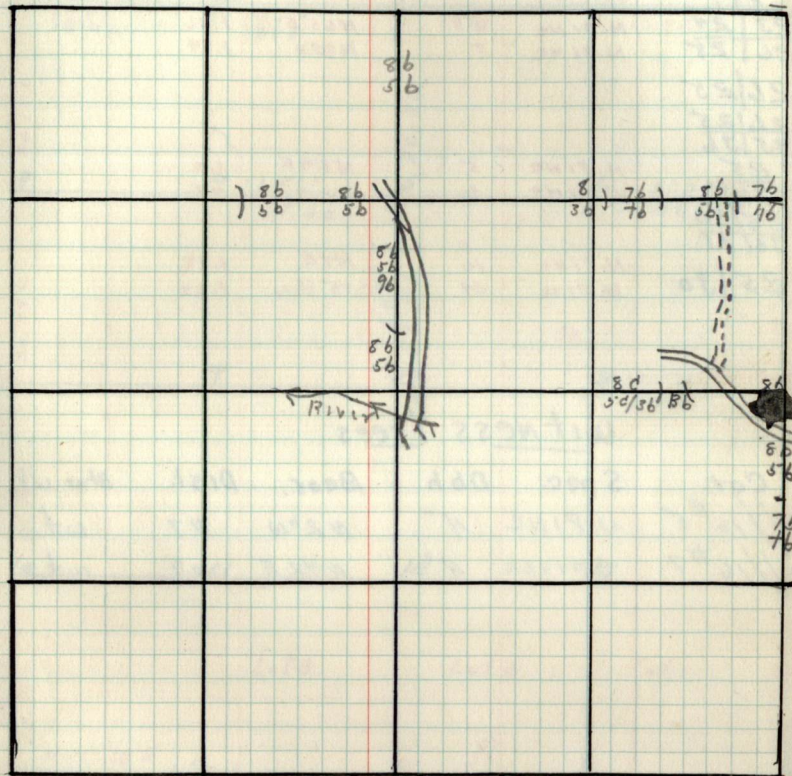
Line s. of N. 1/4 Cor.
 86/56
 21 chs. Highway
 86/56/96
 Hochs End
 Line W. of 1/16 #7
 7646
 4 chs. 56/86
 6 chs. trail
 14 chs. 76/46
 18 chs. 8/36
 20 chs. cor.

chains

Line W. of 1/16 #5
 50 chs Highway
 8656
 17 chs River
 Lines of E. 1/4 Cor.
 8656 36
 250 chs Road
 12 chs. 7646
 20.01 chs 1/16 #16
 Line W. of E. 1/4 Cor.
 86/56/36
 7 chs Road
 10 chs. Rb
 14 chs. 80/50/36

Type + Cultural Map

25



Remarks:

25

Resurvey BLO corners

Cor.	Spec.	Dbh.	Bear.	Dist.
24/17				
25/30				
24	N. PINE	5	N39°44'W	.23
25	J. PINE	5	S41°42'E	.40
23/24	N. PINE	8	N65°E	1.36
26/25	N. PINE	5	N80°E	1.24
26/25				
24/25				
25/36				
25	N. PINE	5	N54°E	.60
36	J. PINE	6	OE	.47
25/30				
36/31				
25/30	N. PINE	10	N4°E	1.19
	N. PINE	24	S75°42'W	1.24

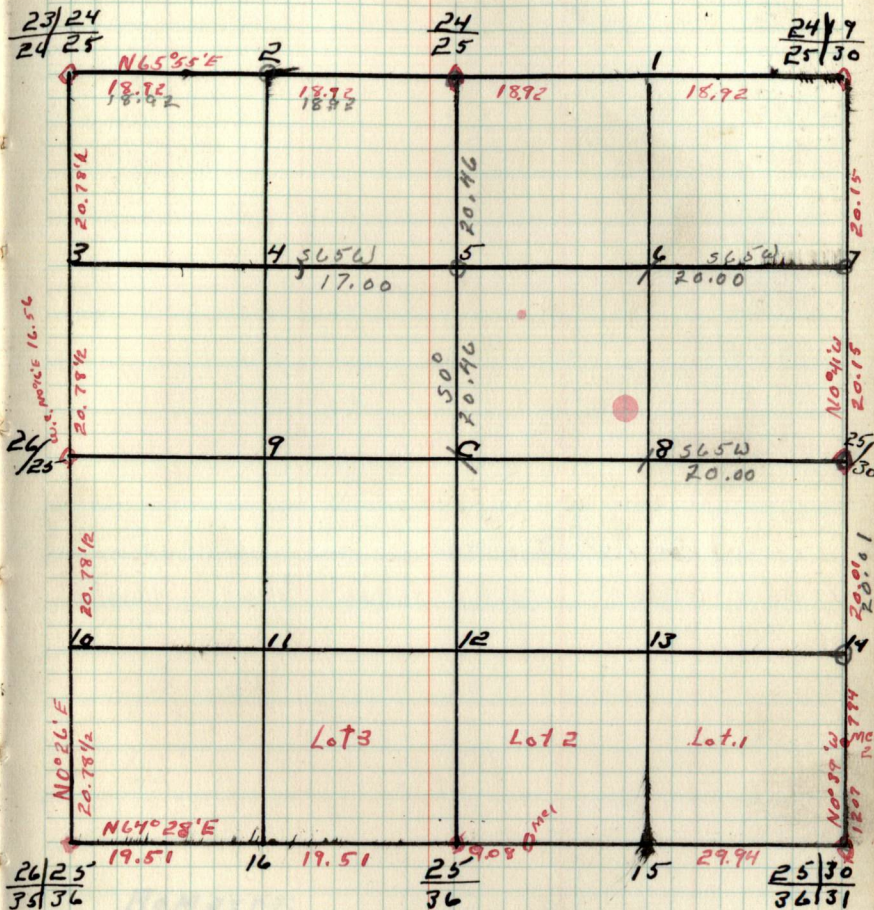
Witness trees

Cor.	Spec.	Dbh.	Bear.	Dist.	Btor wt.
//16 #5	J. PINE	4"	N2°W	.47	wt.
//16 #7	Spruce	4"	N42°E	.09	wt.

Sec. 25 T147N R27W

25

By



26
chains

Notes

chains

type + cultural Map

26

Remarks:

26

Resurvey GLO CORNERS

Cor.	Spec.	Dbh	Bear.	Dist.
23/24	N. PINE	8	N 65° E	1.36
26/25	N. PINE	5	N 80° E	1.24
23	N. PINE	12	N 55° 44' E	89
26	J. PINE	8	S 25° 1/2 W	1.24

24/23
27/26

27/26

27/26

34/35

26

35

26/25

31/36

26/25

X

*OLD corner

Witness trees

Cor.	Spec.	Dbh	Bear.	Dist	Bt. or wt.
------	-------	-----	-------	------	------------

Sec. 26 + 147 N R 27 W

26

BY

22/23

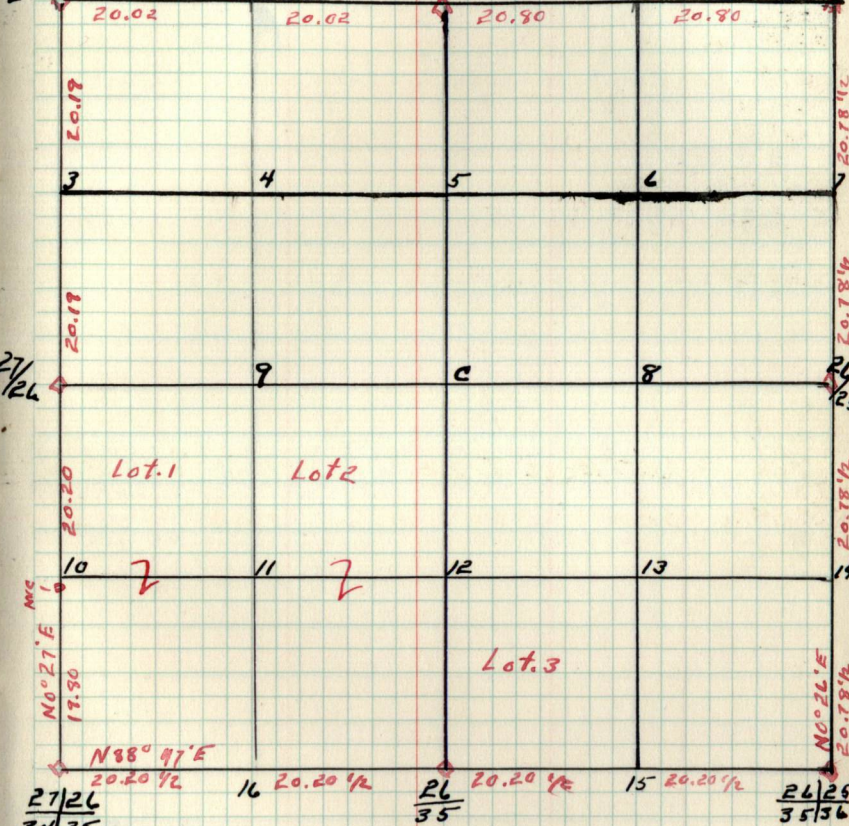
27/26 N 84° 25' E 2

23/26

20.90

23/24

26/25



27/26

34/35

26/35

35/36

26/25

35/36

Witness trees (cont)

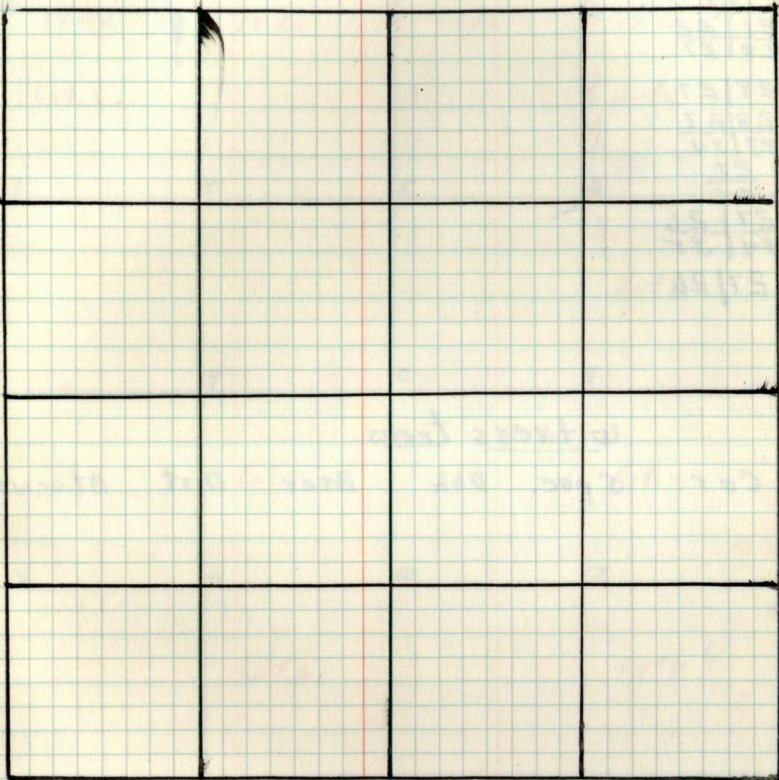
Cor.	Spec.	Dbh.	Bear.	Dist	Bt. or wt.
------	-------	------	-------	------	------------

Notes

chains

chains

type + Cultural Map



Remarks:

27

Resurvey GLO CORNERS

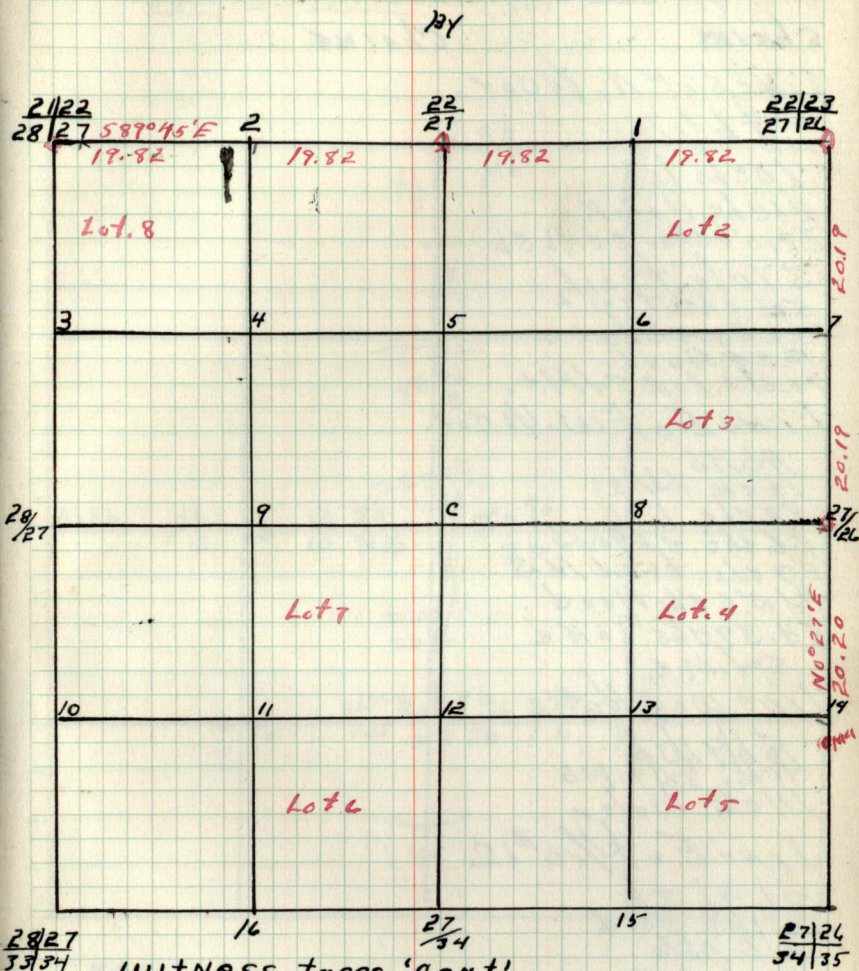
Cor	Spec.	Dbh	Bear.	Dist.
22/23				
27/26				
22/27	X			
21/22				
28/27	X			
28/27	X			
33/34	X			
27/27	X			
27/26	X			
34/35				
27/26				

Witness trees

Cor. Spec. Dbh Bear. Dist. Bt.or.wt.

Sec. 27 T147N R27W

27



Witness trees 'cont.'

Cor. Spec. Dbh Bear. Dist Bt.or.wt.

chains

chains

Lincs of N. 1/4 Cor.

76/1s

10 chs 1s

21 chs. Creek

22, 50 chs. 8 & 9 & 3b

37 chs. Trail

52 chs. Trail

50 chs. 5 & 2 to 5

150 ft. Road

70 chs. Lake Set M.C.

Line E of W. 1/4 Cor.

Ab Mb

13 chs 1s/1s

22 chs. 1s

26 chs. 5b 7b 3b

27 chs. Trail N.S

41 50 chs Road

54.39 chs. Lake

Set. M.C.

Line W of 1/16 #12

8b 9b 3b

4 chs. 8b 9b Mb

14 chs. Water

Line E of 1/16 #12

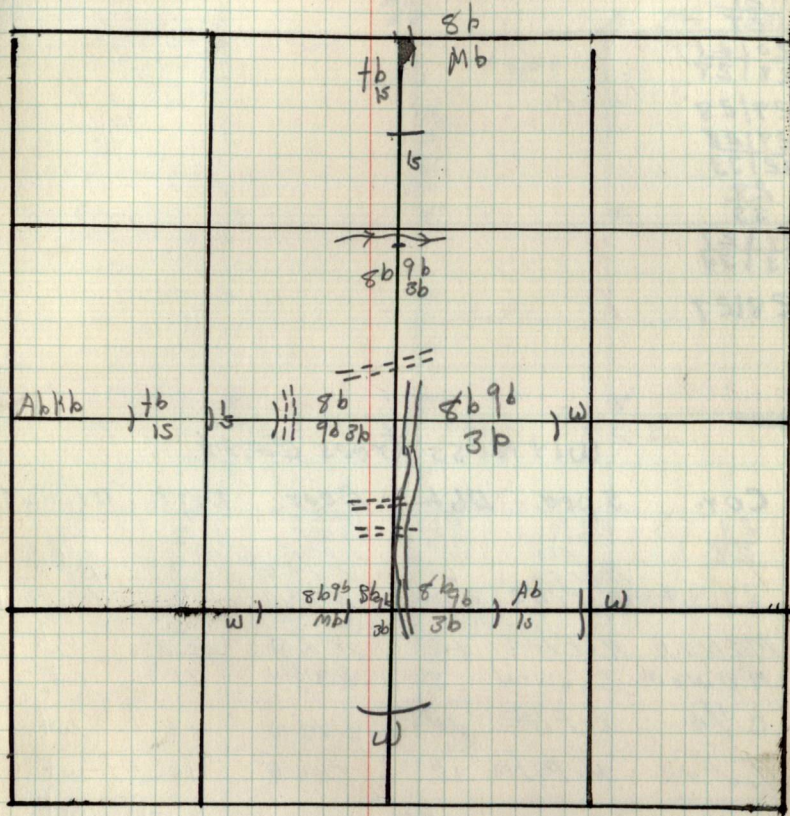
8b 9b 3b

50 chs. Road

11 chs Ab 1s

16 chs Lake

Set. M.C.



Remarks:

28

Resurvey GLO Corners
Spec Dbh Bear. DistCor.
21/22
28/27
21
2820/21
29/28

29/28

29/28
32/3328
3328/27
33/34

28127

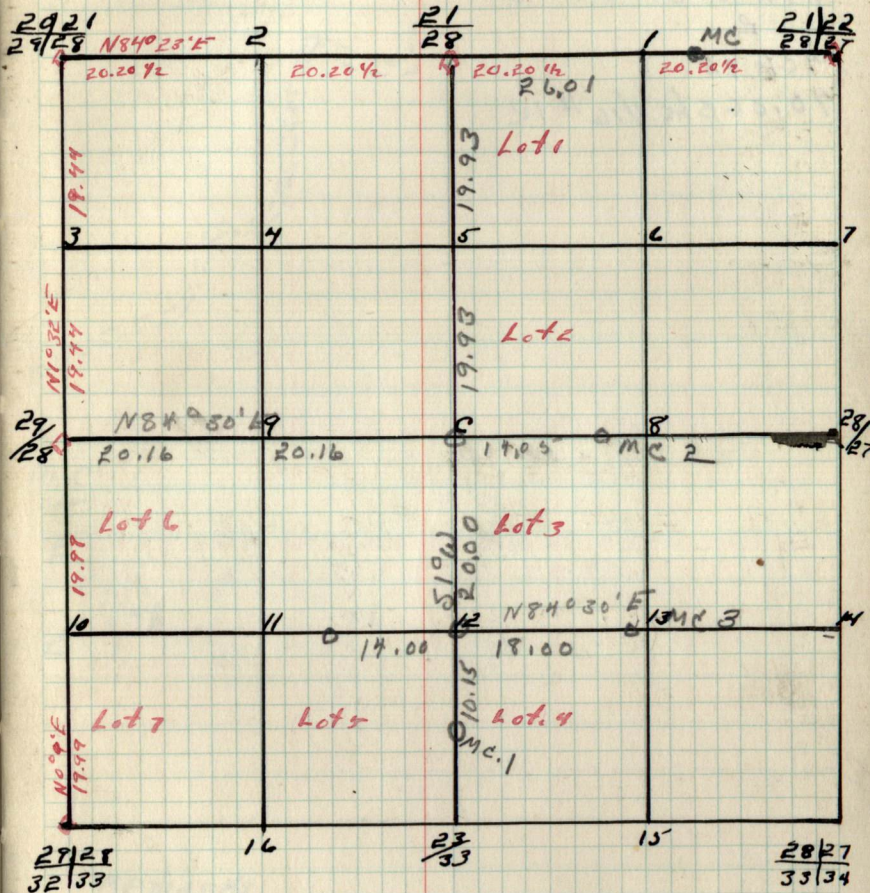
X

X

Witness trees cont.

Cor.	Spec.	Dbh	Bear.	Dist	Bt. or wt.
21/28	6 m. Spruce	6	S62E	39	Bt.
28	Ash	16	N47E	52	wt.
29/28	Birch	6	N64E	15	Bt.
	N. PINE	20	N14E	59	Bt. + wt.
			N79W	60	
Mc No. 1	N. PINE	12"	N2W	58	wt.
Mc No. 2	Bass Wood	8	N88W	71	wt.
C 1/4	N. PINE	14"	S18W	13	wt.
1/10 #12	N. PINE	12	S66E	10	wt.
Mc. No. 3	Aspen	5"	S67W	3.51	wt.

28

Sec. 28 T147N R27W
By Haberle

Witness trees 'Cont.'

Cor. Spec. Dbh Bear. Dist. Bt. or wt.

Notes

chains

Line w. Bet. Sec. 19-30

Mc/Bb

14chs. 7px

40chs 14 cor

80chs Sec. cor.

Line w. of F/16 #4

P

8chs. 7btb

17chs. 7b

19chs Mc/Ab

28.50chs trail

3Rchs 1

chains

Line w. of 1/4 Cor.

Mc

14chs 14b/Bb

17chs Fireway

24chs MC

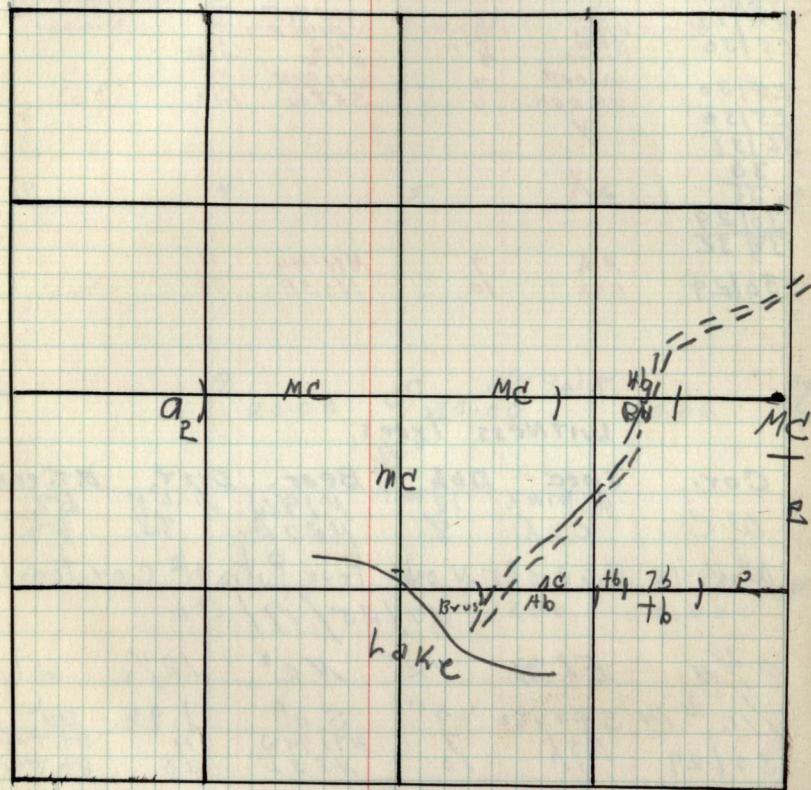
60chs. 0

Line s. of d. 1/4 Cor.

Mc

19chs. Lake

Type + Cultural Map



Remarks:

Resurvey GLO corner

Cor.	Spec.	Dbh	Bear.	Dist.
19/20	Cedar	4 1/2	N 40° E	.69
30/29	Poplar	4	S 54° E	.23
19	Cedar	4	S 108° W	.25
30			N 30° W	.46 1/2
24/19	Tam.	4	N 63° 1/2 E	.12
25/30	Cedar	5 1/2	S 54° 1/2 E	.23
	Tam.	4	S 11° W	.21 1/2
	Cedar	4	N 15° W	.85
25/30	W. oak	7	S 51° 3/4 E	1.13
25/30	W. oak	6	S 5° W	
36/31	X			
30	X			
30/29	Ash	7	N 71° W	.11
31/32	Ash	10	N 53° E	.30

Witness trees

Cor.	Spec.	Dbh	Bear.	Dist.	B.T. or wt.
WC.	W. PINL	12	N 19° W	1.52	B.T.
	OAK	8	N 27° E	.83	B.T.

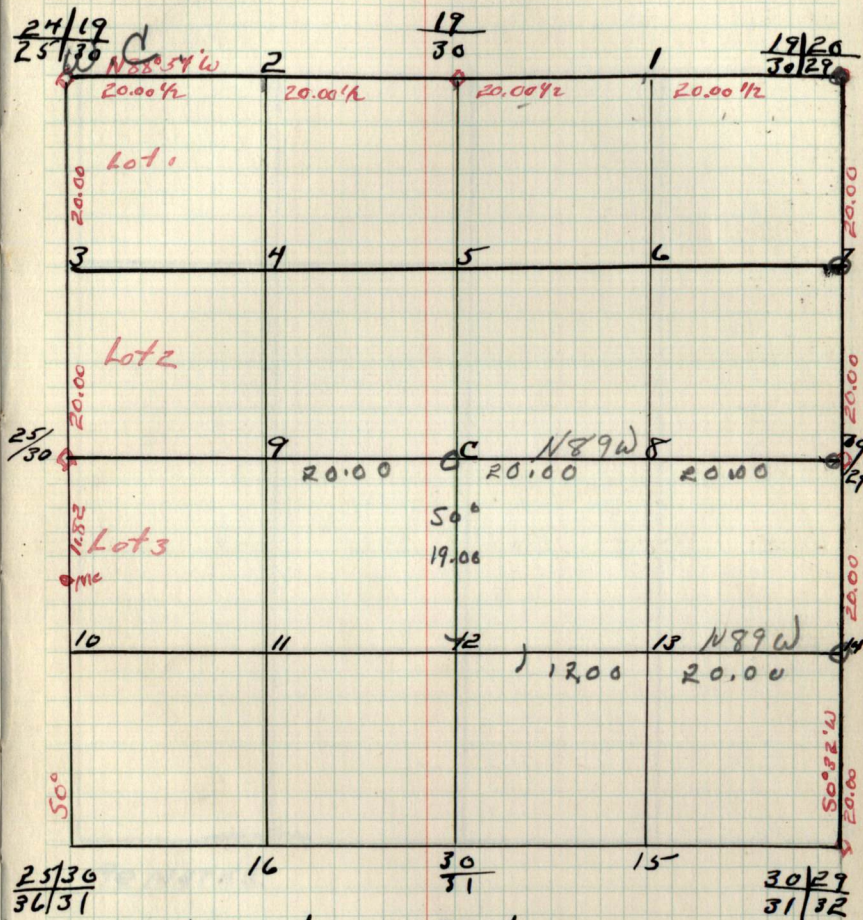
Wid. is 3.62 chs No of tree pit. of cor. to Sec

24/25/19/30

1/4	ELM	12"	N 0°	1 1/2	WT
1/16 # 14	Spruce	4"	S 0°	1.96	WT
30/29	Ash	7	N 71° W	.11	B.T. + WT
		10	N 53° E	.30	B.T. + WT

Sec. 30 T147N1927W

By

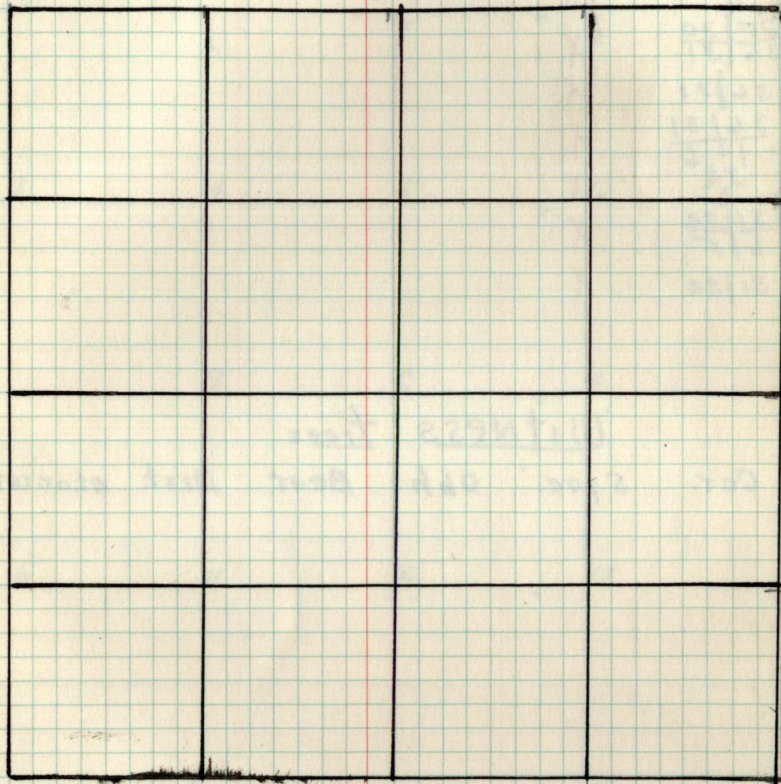


Witness trees cont.
Cor. Spec. Dbh Bear. Dist. B.T. or wt.

chains

Notes

chains

type + Cultural Map

REMARKS.

31

Resurvey GLO Corners

Cor. Spec. DBh Bear. Dist.

30/29	X
31/32	X
30	X
31	X
25/30	X
36/31	X
36/31	X
36/31	X
1/6	X
31/32	X
6/5	X
31/32	X

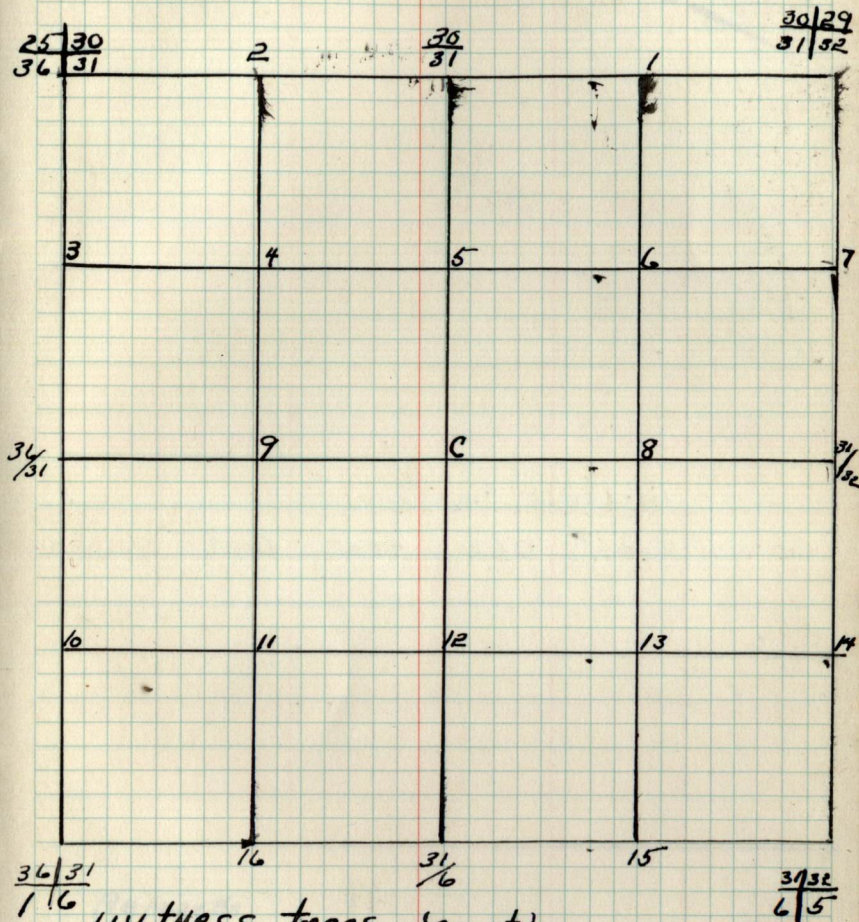
Witness trees

Cor. Spec. DBh Bear. Dist. stor. wt.

Sec. 31 T14T N27W

31

BY

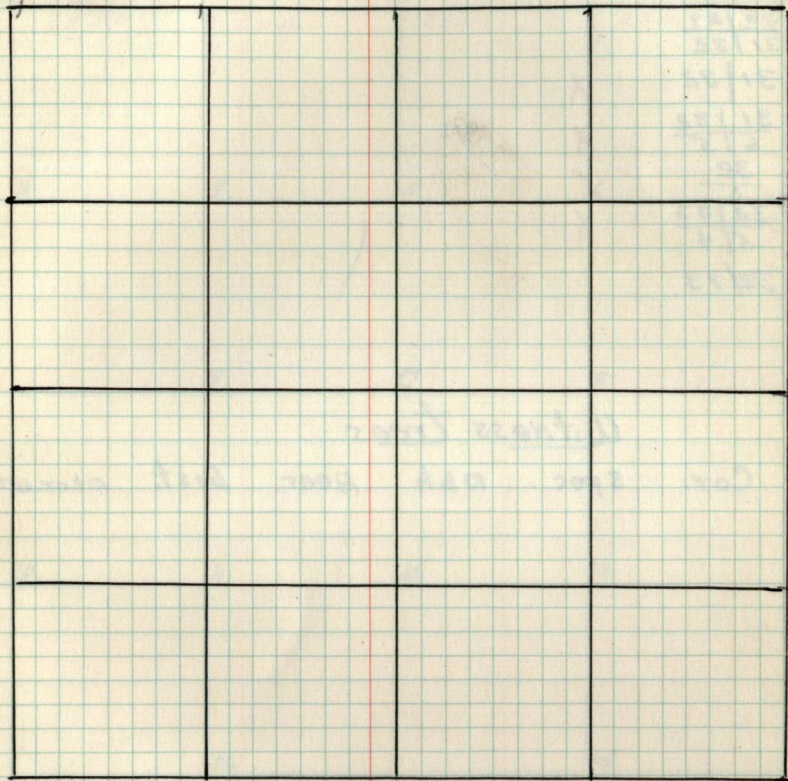


Witness trees (cont.)
Cor. Spec. DBh Bear. Dist. Bt. or. Wt.

Notes

chains

chains

type & Cultural Map

Remarks.

Resurvey GLO Corners

Cor.

Spec. Dbh Bear. Dist.

 $\frac{29}{32}$ $\frac{29}{32}$ $\frac{30}{31}$ $\frac{31}{32}$ $\frac{31}{32}$

X

 $\frac{31}{32}$ $\frac{6}{5}$

X

 $\frac{32}{5}$

X

 $\frac{32}{33}$ $\frac{5}{4}$

X

 $\frac{32}{73}$

Witness trees

Cor.

Spec.

Dbh

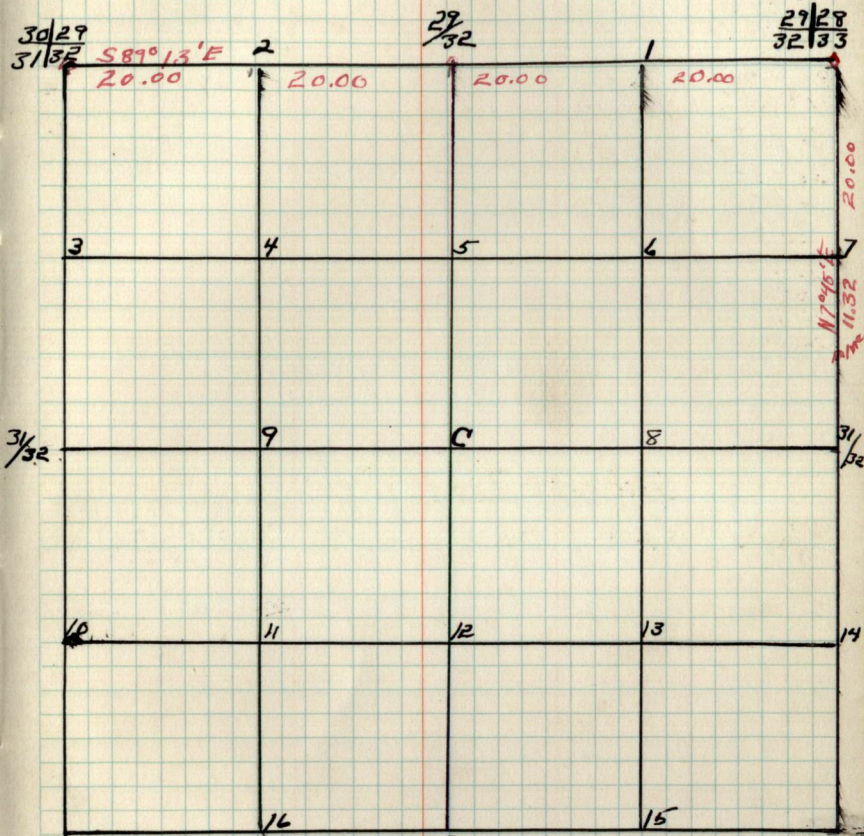
Bear.

Dist.

Bt. or. wt.

Sec. 32 T147N R27W

By

 $\frac{31}{32}$ $\frac{6}{5}$

Witness trees (Cont.)

Cor.

Spec.

Dbh

Bear.

Dist.

Bt. or. wt.

 $\frac{32}{5}$ $\frac{32}{33}$ $\frac{5}{4}$

33

Notes

chains

chains

Type & Cultural Map

33

Remarks:

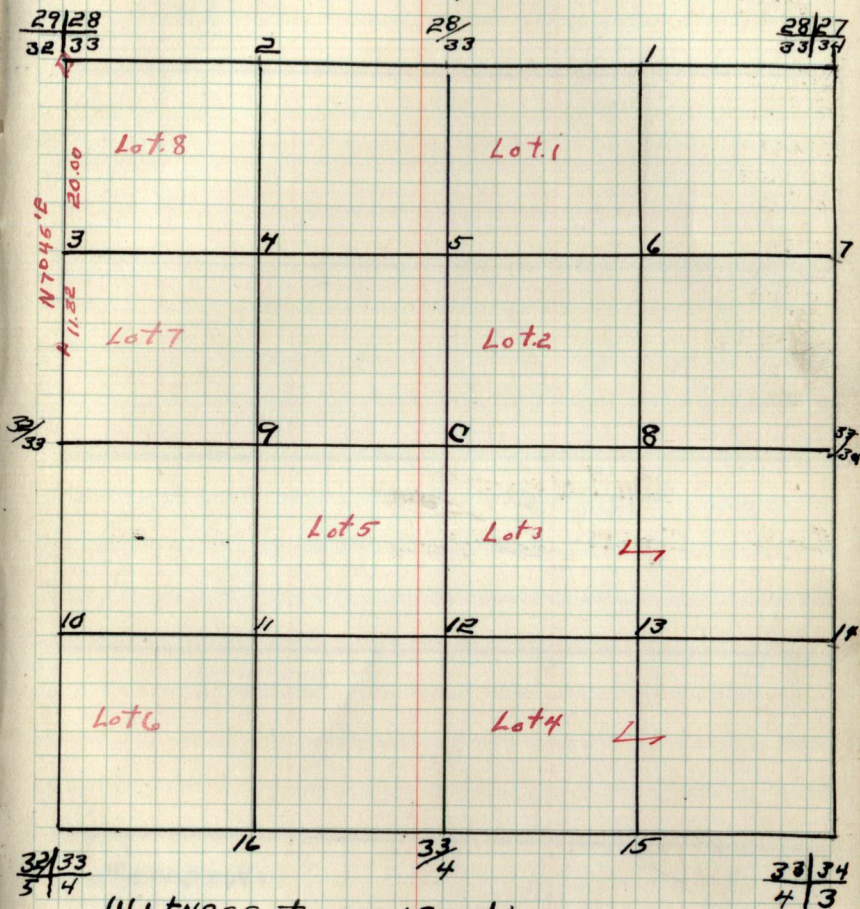
Resurvey GLO - Corners

Cor.	Spec.	Dbh	Bear.	Dist.
$\frac{28}{27}$ $\frac{33}{34}$	X			
$\frac{28}{33}$ $\frac{32}{33}$				
$\frac{29}{28}$ $\frac{32}{33}$				
$\frac{32}{33}$ $\frac{32}{33}$	X			
$\frac{5}{4}$ $\frac{33}{4}$				
$\frac{33}{34}$ $\frac{4}{3}$	X			
$\frac{33}{34}$ $\frac{4}{3}$	X			

Witness Trees

Cor. Spec. Dbh Bear Dist. Btor.wt.

Sec. 33 T147N R27W

By - Haberle + Party
1937

Witness trees 'Cont.'

Cor. Spec. Dbh Bear Dist. Btor.wt.

$\frac{32}{33}$
 $\frac{5}{4}$

$\frac{33}{4}$

$\frac{33}{34}$
 $\frac{4}{3}$

34

Notes

chains

chains

34
type + Cultural Map

REMARKS:

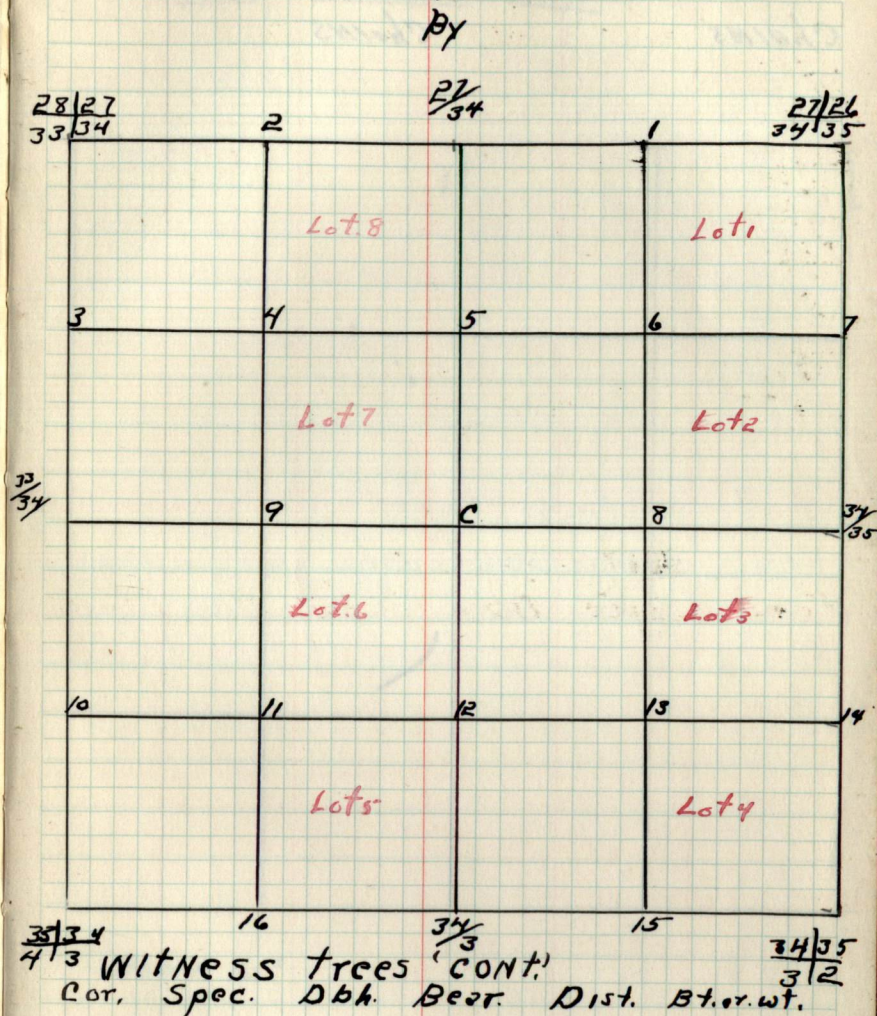
Resurvey GLO corners

Cor.	Spec.	Dbh	Bear.	Dist.
$\frac{27}{34} \frac{26}{35}$	X			
$\frac{27}{34}$	X			
$\frac{28}{33} \frac{27}{34}$	X			
$\frac{33}{33} \frac{34}{34}$	X			
$\frac{33}{4} \frac{34}{3}$	X			
$\frac{34}{3} \frac{35}{2}$	X			
$\frac{34}{31} \frac{35}{2}$	X			
$\frac{34}{34} \frac{35}{35}$	X			

Witness trees

Cor. Spec. Dbh Bear. Dist. Bt.or.wt.

Sec. 34 T147N R27W

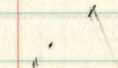


35

Notes

Chains

Chains



type + Cultural Map

35

Remar Ks:

35

Resurvey GLO corners

 $\frac{26}{35} | \frac{25}{32}$ $\frac{26}{35}$ $\frac{27}{34} | \frac{26}{35}$ $\frac{34}{35} | \frac{35}{35}$ $\frac{34}{35}$ $\frac{3}{2}$ $\frac{2}{35} | \frac{36}{36}$ $\frac{2}{1}$ $\frac{35}{36}$

X

X

X

Witness trees

Cor. Spec. Dbh. Bear. Dist. Btor.wt.

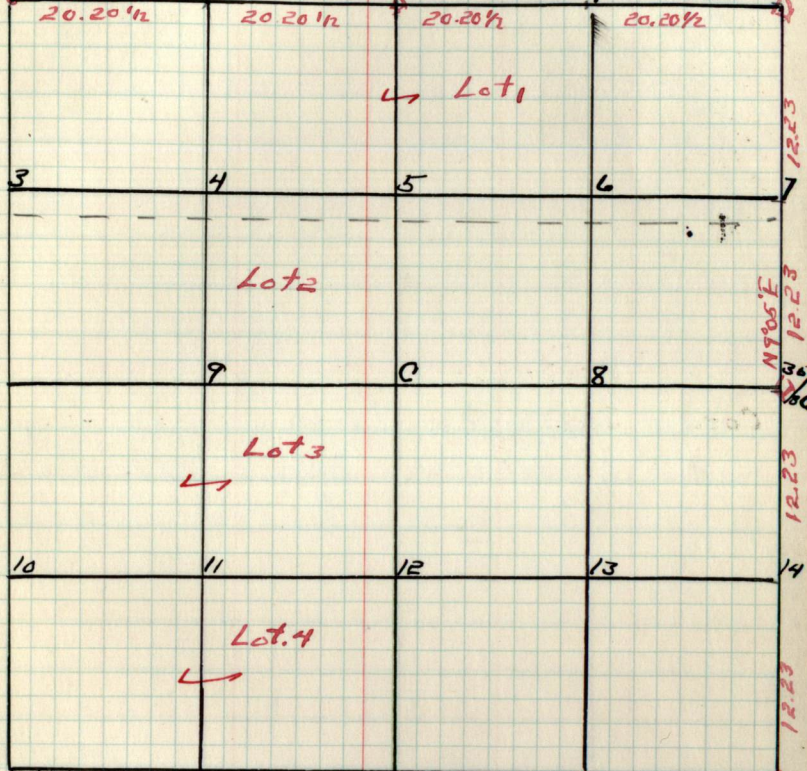
35-

Sec. 35 T147N R27W

By

 $\frac{27}{34} | \frac{26}{35}$

N88°41'E 2

 $\frac{26}{35} | \frac{25}{36}$ $\frac{26}{35} | \frac{25}{36}$  $\frac{34}{35} | \frac{36}{32}$ Witness trees (cont.)

Cor. Spec. Dbh. Bear. Dist. Btor.wt.

 $\frac{35}{36} | \frac{21}{21}$

36

chains

Notes

chains

Type of Cultural Map

36

Remarks.

36

Resurvey GLO corners

Cor. Spec. Dbh Bear. Dist.

$$\begin{array}{r} 25 | 30 \\ \hline 36 | 31 \\ \hline 25 \\ \hline 36 \end{array}$$

X

$$\begin{array}{r} 26 | 25 \\ \hline 35 | 36 \end{array}$$

35/36

35/36

2/1

36

36/31

1/6

36/31

X

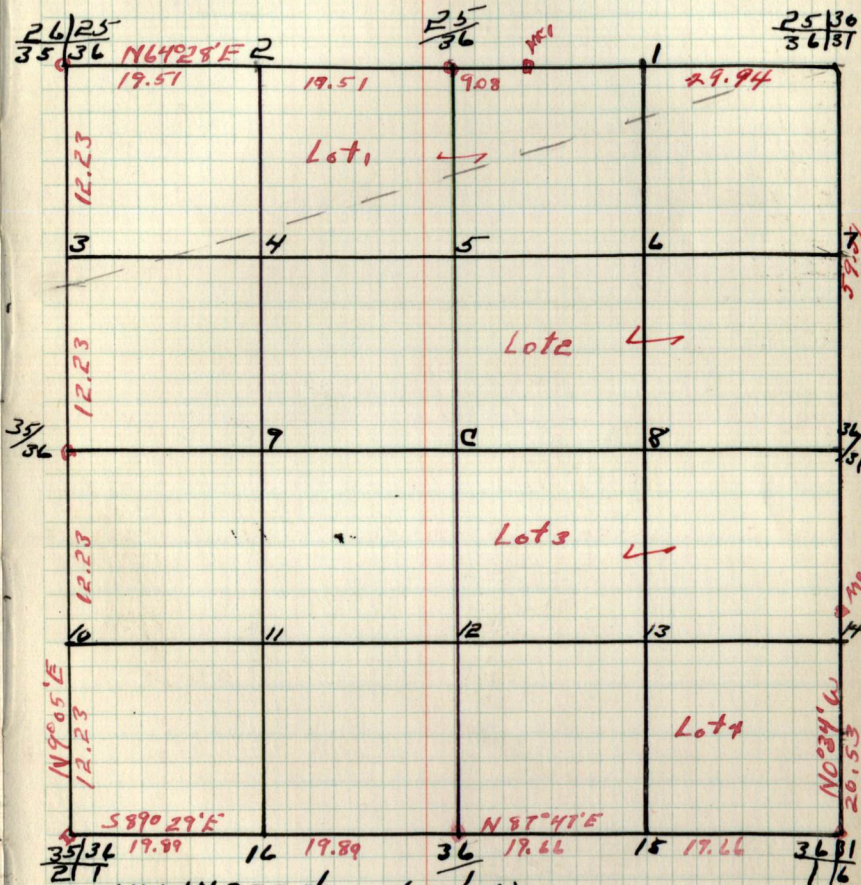
Witness trees

Cor. Spec. Dbh Bear. Dist. B.t.or.wt.

36

Sec 36 T147N R27W

By

Witness trees (cont.)

Cor. Spec. Dbh Bear. Dist. B.t.or.wt.

Pages 037-End
are blank