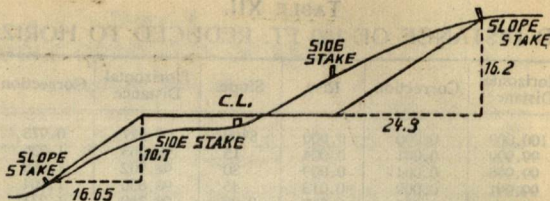


1887
T 1470 3264 69279

LIBRARY
OF THE
MUSEUM OF
COMPARATIVE ZOOLOGY

CCC 33



DISTANCES FROM SIDE STAKES FOR CROSS-SECTIONING.

SLOPE $1\frac{1}{2}$ TO 1. ROADWAY OF ANY WIDTH.

	0	.1	.2	.3	.4	.5	.6	.7	.8	.9	
0	0.00	0.15	0.30	0.45	0.60	0.75	0.90	1.05	1.20	1.35	0
1	1.50	1.65	1.80	1.95	2.10	2.25	2.40	2.55	2.70	2.85	1
2	3.00	3.15	3.30	3.45	3.60	3.75	3.90	4.05	4.20	4.35	2
3	4.50	4.65	4.80	4.95	5.10	5.25	5.40	5.55	5.70	5.85	3
4	6.00	6.15	6.30	6.45	6.60	6.75	6.90	7.05	7.20	7.35	4
5	7.50	7.65	7.80	7.95	8.10	8.25	8.40	8.55	8.70	8.85	5
6	9.00	9.15	9.30	9.45	9.60	9.75	9.90	10.05	10.20	10.35	6
7	10.50	10.65	10.80	10.95	11.10	11.25	11.40	11.55	11.70	11.85	7
8	12.00	12.15	12.30	12.45	12.60	12.75	12.90	13.05	13.20	13.35	8
9	13.50	13.65	13.80	13.95	14.10	14.25	14.40	14.55	14.70	14.85	9
10	15.00	15.15	15.30	15.45	15.60	15.75	15.90	16.05	16.20	16.35	10
11	16.50	16.65	16.80	16.95	17.10	17.25	17.40	17.55	17.70	17.85	11
12	18.00	18.15	18.30	18.45	18.60	18.75	18.90	19.05	19.20	19.35	12
13	19.50	19.65	19.80	19.95	20.10	20.25	20.40	20.55	20.70	20.85	13
14	21.00	21.15	21.30	21.45	21.60	21.75	21.90	22.05	22.20	22.35	14
15	22.50	22.65	22.80	22.95	23.10	23.25	23.40	23.55	23.70	23.85	15
16	24.00	24.15	24.30	24.45	24.60	24.75	24.90	25.05	25.20	25.35	16
17	25.50	25.65	25.80	25.95	26.10	26.25	26.40	26.55	26.70	26.85	17
18	27.00	27.15	27.30	27.45	27.60	27.75	27.90	28.05	28.20	28.35	18
19	28.50	28.65	28.80	28.95	29.10	29.25	29.40	29.55	29.70	29.85	19
20	30.00	30.15	30.30	30.45	30.60	30.75	30.90	31.05	31.20	31.35	20
21	31.50	31.65	31.80	31.95	32.10	32.25	32.40	32.55	32.70	32.85	21
22	33.00	33.15	33.30	33.45	33.60	33.75	33.90	34.05	34.20	34.35	22
23	34.50	34.65	34.80	34.95	35.10	35.25	35.40	35.55	35.70	35.85	23
24	36.00	36.15	36.30	36.45	36.60	36.75	36.90	37.05	37.20	37.35	24
25	37.50	37.65	37.80	37.95	38.10	38.25	38.40	38.55	38.70	38.85	25
26	39.00	39.15	39.30	39.45	39.60	39.75	39.90	40.05	40.20	40.35	26
27	40.50	40.65	40.80	40.95	41.10	41.25	41.40	41.55	41.70	41.85	27
28	42.00	42.15	42.30	42.45	42.60	42.75	42.90	43.05	43.20	43.35	28
29	43.50	43.65	43.80	43.95	44.10	44.25	44.40	44.55	44.70	44.85	29
30	45.00	45.15	45.30	45.45	45.60	45.75	45.90	46.05	46.20	46.35	30
31	46.50	46.65	46.80	46.95	47.10	47.25	47.40	47.55	47.70	47.85	31
32	48.00	48.15	48.30	48.45	48.60	48.75	48.90	49.05	49.20	49.35	32
33	49.50	49.65	49.80	49.95	50.10	50.25	50.40	50.55	50.70	50.85	33
34	51.00	51.15	51.30	51.45	51.60	51.75	51.90	52.05	52.20	52.35	34
35	52.50	52.65	52.80	52.95	53.10	53.25	53.40	53.55	53.70	53.85	35
36	54.00	54.15	54.30	54.45	54.60	54.75	54.90	55.05	55.20	55.35	36
37	55.50	55.65	55.80	55.95	56.10	56.25	56.40	56.55	56.70	56.85	37
38	57.00	57.15	57.30	57.45	57.60	57.75	57.90	58.05	58.20	58.35	38
39	58.50	58.65	58.80	58.95	59.10	59.25	59.40	59.55	59.70	59.85	39
40	60.00	60.15	60.30	60.45	60.60	60.75	60.90	61.05	61.20	61.35	40
41	61.50	61.65	61.80	61.95	62.10	62.25	62.40	62.55	62.70	62.85	41
42	63.00	63.15	63.30	63.45	63.60	63.75	63.90	64.05	64.20	64.35	42
43	64.50	64.65	64.80	64.95	65.10	65.25	65.40	65.55	65.70	65.85	43
44	66.00	66.15	66.30	66.45	66.60	66.75	66.90	67.05	67.20	67.35	44
45	67.50	67.65	67.80	67.95	68.10	68.25	68.40	68.55	68.70	68.85	45
46	69.00	69.15	69.30	69.45	69.60	69.75	69.90	70.05	70.20	70.35	46
47	70.50	70.65	70.80	70.95	71.10	71.25	71.40	71.55	71.70	71.85	47
48	72.00	72.15	72.30	72.45	72.60	72.75	72.90	73.05	73.20	73.35	48
49	73.50	73.65	73.80	73.95	74.10	74.25	74.40	74.55	74.70	74.85	49
50	75.00	75.15	75.30	75.45	75.60	75.75	75.90	76.05	76.20	76.35	50

Index

Fireways ----

Roads shaded ==

T 147 N R 26 W
Pages 1 to 36

T 147 N - R 27 W
Pages 37 to 73

T-147 N R26W & R27W

TABLES FOR EXCAVATIONS AND EMBANKMENTS.

DISTANCES FROM CENTER OF ROADWAY FOR CROSS-SECTIONING.
ROADWAY 18 FEET WIDE. SIDE SLOPES 1 TO 1.
FOR SINGLE TRACK EXCAVATION.

	0	.1	.2	.3	.4	.5	.6	.7	.8	.9	
0	9.0	9.1	9.2	9.3	9.4	9.5	9.6	9.7	9.8	9.9	0
1	10.0	10.1	10.2	10.3	10.4	10.5	10.6	10.7	10.8	10.9	1
2	11.0	11.1	11.2	11.3	11.4	11.5	11.6	11.7	11.8	11.9	2
3	12.0	12.1	12.2	12.3	12.4	12.5	12.6	12.7	12.8	12.9	3
4	13.0	13.1	13.2	13.3	13.4	13.5	13.6	13.7	13.8	13.9	4
5	14.0	14.1	14.2	14.3	14.4	14.5	14.6	14.7	14.8	14.9	5
6	15.0	15.1	15.2	15.3	15.4	15.5	15.6	15.7	15.8	15.9	6
7	16.0	16.1	16.2	16.3	16.4	16.5	16.6	16.7	16.8	16.9	7
8	17.0	17.1	17.2	17.3	17.4	17.5	17.6	17.7	17.8	17.9	8
9	18.0	18.1	18.2	18.3	18.4	18.5	18.6	18.7	18.8	18.9	9
10	19.0	19.1	19.2	19.3	19.4	19.5	19.6	19.7	19.8	19.9	10
11	20.0	20.1	20.2	20.3	20.4	20.5	20.6	20.7	20.8	20.9	11
12	21.0	21.1	21.2	21.3	21.4	21.5	21.6	21.7	21.8	21.9	12
13	22.0	22.1	22.2	22.3	22.4	22.5	22.6	22.7	22.8	22.9	13
14	23.0	23.1	23.2	23.3	23.4	23.5	23.6	23.7	23.8	23.9	14
15	24.0	24.1	24.2	24.3	24.4	24.5	24.6	24.7	24.8	24.9	15
16	25.0	25.1	25.2	25.3	25.4	25.5	25.6	25.7	25.8	25.9	16
17	26.0	26.1	26.2	26.3	26.4	26.5	26.6	26.7	26.8	26.9	17
18	27.0	27.1	27.2	27.3	27.4	27.5	27.6	27.7	27.8	27.9	18
19	28.0	28.1	28.2	28.3	28.4	28.5	28.6	28.7	28.8	28.9	19
20	29.0	29.1	29.2	29.3	29.4	29.5	29.6	29.7	29.8	29.9	20
21	30.0	30.1	30.2	30.3	30.4	30.5	30.6	30.7	30.8	30.9	21
22	31.0	31.1	31.2	31.3	31.4	31.5	31.6	31.7	31.8	31.9	22
23	32.0	32.1	32.2	32.3	32.4	32.5	32.6	32.7	32.8	32.9	23
24	33.0	33.1	33.2	33.3	33.4	33.5	33.6	33.7	33.8	33.9	24
25	34.0	34.1	34.2	34.3	34.4	34.5	34.6	34.7	34.8	34.9	25
26	35.0	35.1	35.2	35.3	35.4	35.5	35.6	35.7	35.8	35.9	26
27	36.0	36.1	36.2	36.3	36.4	36.5	36.6	36.7	36.8	36.9	27
28	37.0	37.1	37.2	37.3	37.4	37.5	37.6	37.7	37.8	37.9	28
29	38.0	38.1	38.2	38.3	38.4	38.5	38.6	38.7	38.8	38.9	29
30	39.0	39.1	39.2	39.3	39.4	39.5	39.6	39.7	39.8	39.9	30
31	40.0	40.1	40.2	40.3	40.4	40.5	40.6	40.7	40.8	40.9	31
32	41.0	41.1	41.2	41.3	41.4	41.5	41.6	41.7	41.8	41.9	32
33	42.0	42.1	42.2	42.3	42.4	42.5	42.6	42.7	42.8	42.9	33
34	43.0	43.1	43.2	43.3	43.4	43.5	43.6	43.7	43.8	43.9	34
35	44.0	44.1	44.2	44.3	44.4	44.5	44.6	44.7	44.8	44.9	35
36	45.0	45.1	45.2	45.3	45.4	45.5	45.6	45.7	45.8	45.9	36

147-26-27

Scanned

9/6/2012

Hamney

Sec-2 T147N R26W
By Balke

Date Aug 3-1936

Page 2

Mag Dec-N7°E

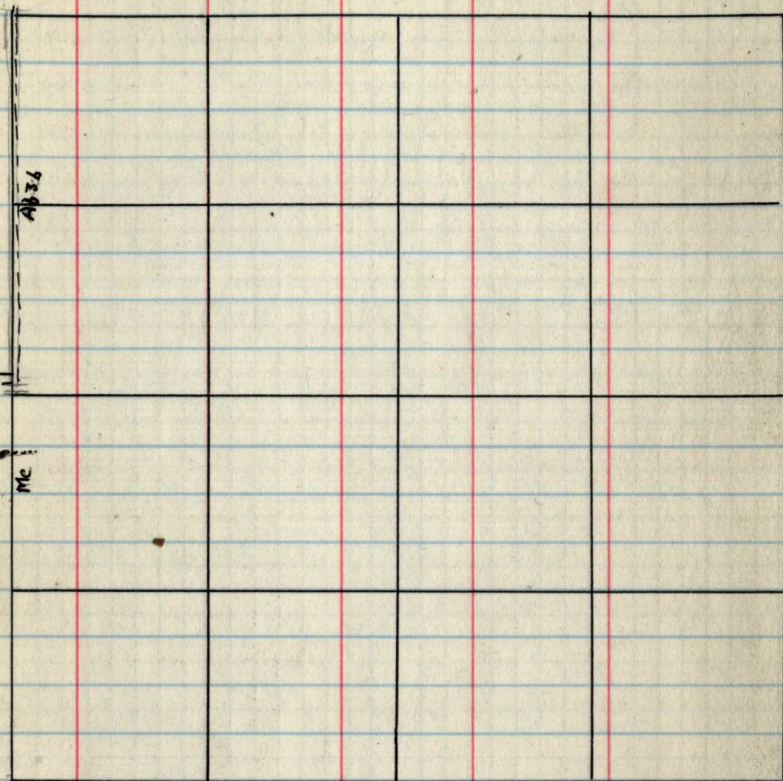
34 1/2
3 1/2

①

7891

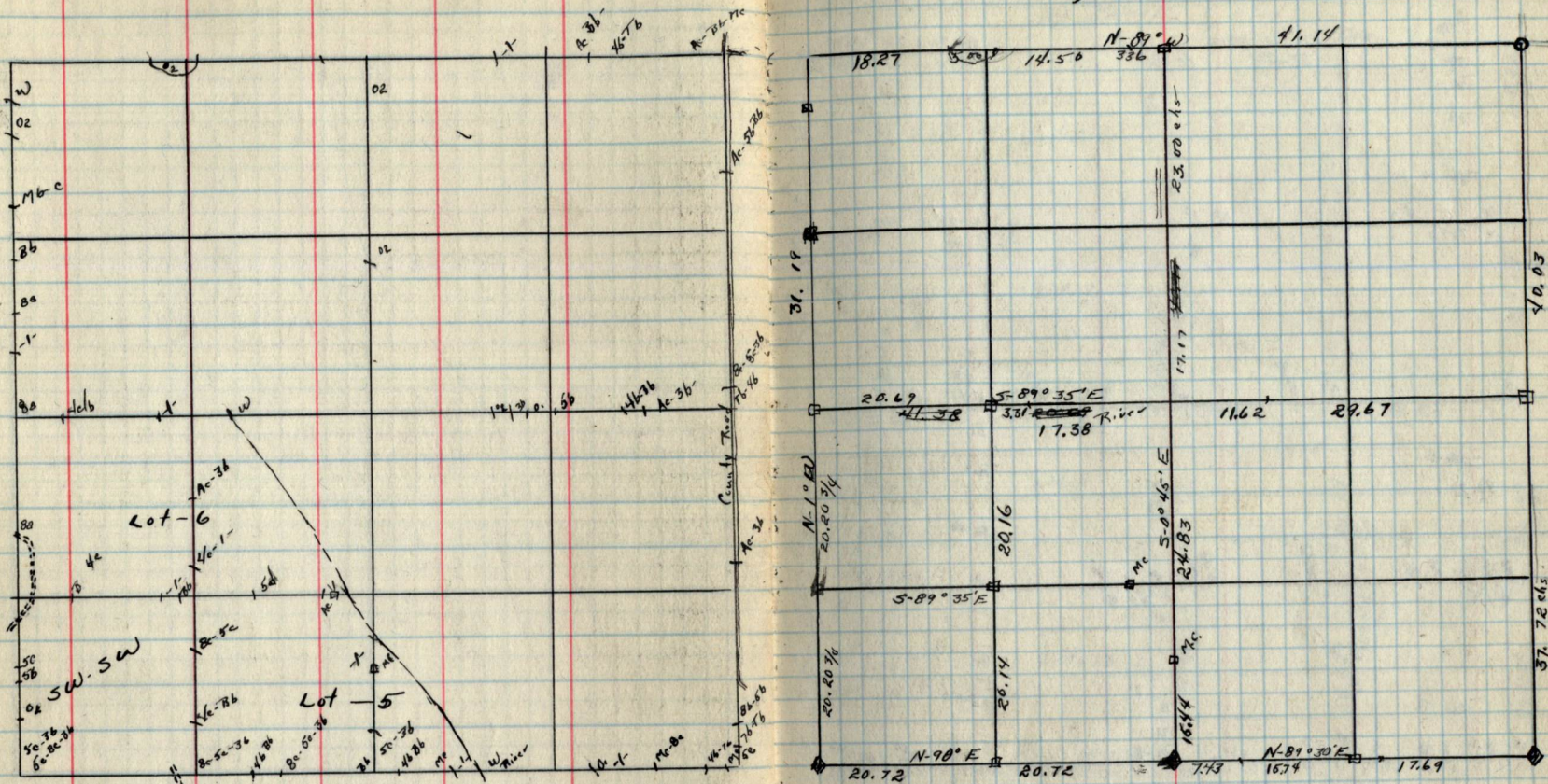
S 80° E

312
10 1/2



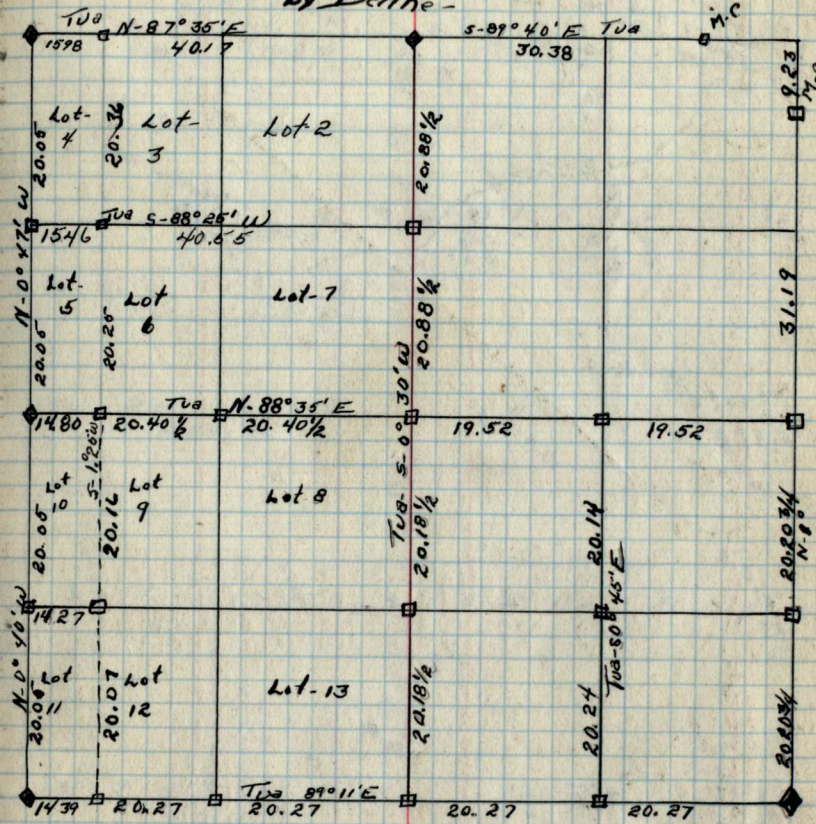
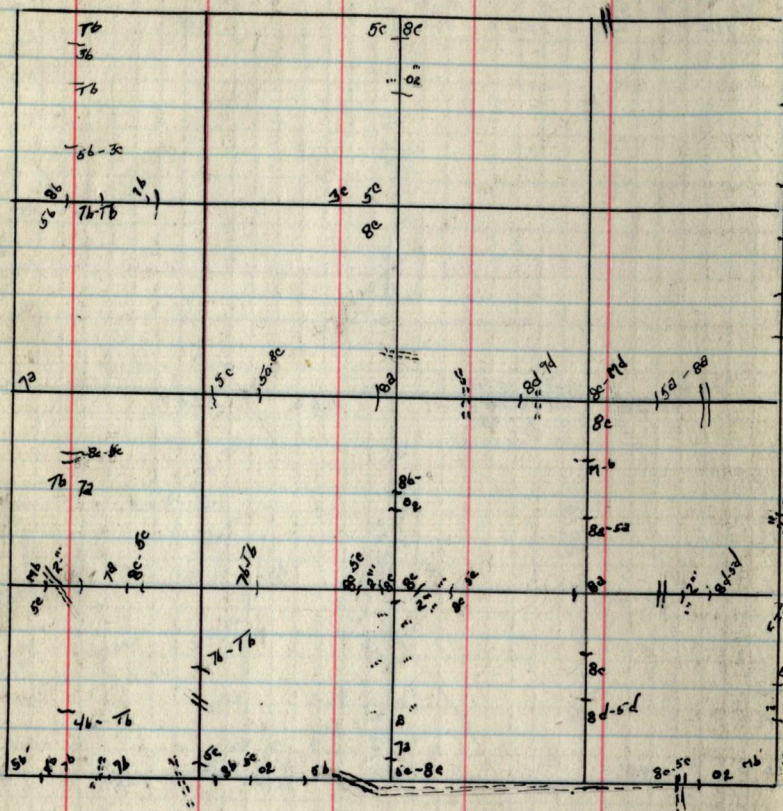
	Spec	DB#	Bearing	
36 1/2 3 1/2	Cedar 14	10	N 67° W	.79
2 1/2	Maple	14	S 36° E	10 1/2
10 1/2	Maple stub steel pipe	18	N 60 1/2° W	.86

Pages 003-005
are blank

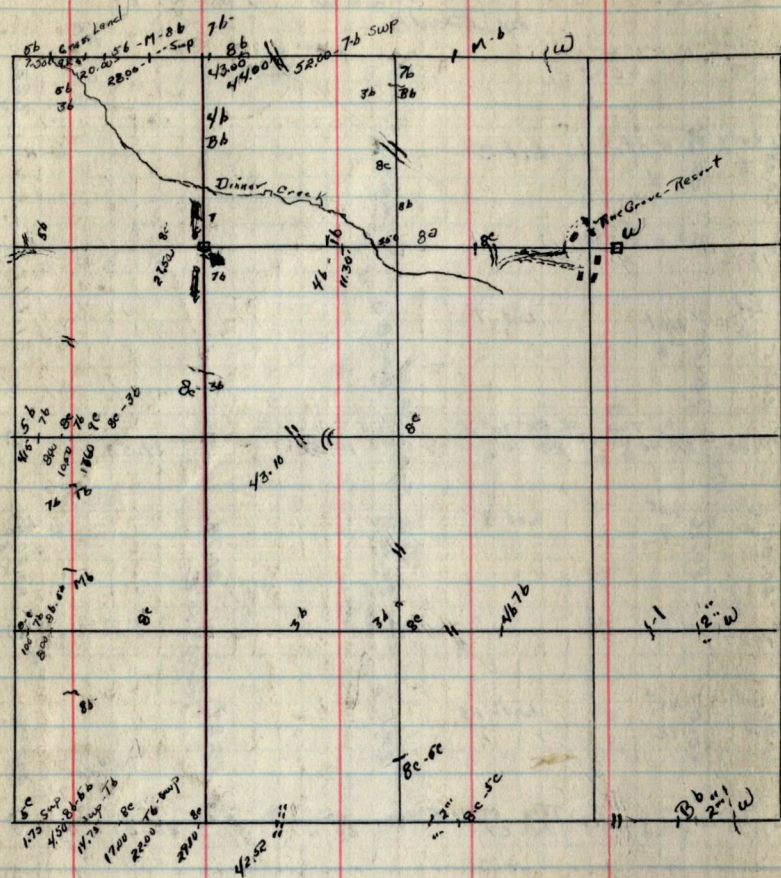


7 18	J-Pine	10"	S-65° E	.78	8 17	N-Pine stub 22" S-12° E	.33
18 17	J-Pine	10"	N-57° E	.64		Tam Stump 10" N-47° E	.31
					8/9	White post on Roadside	

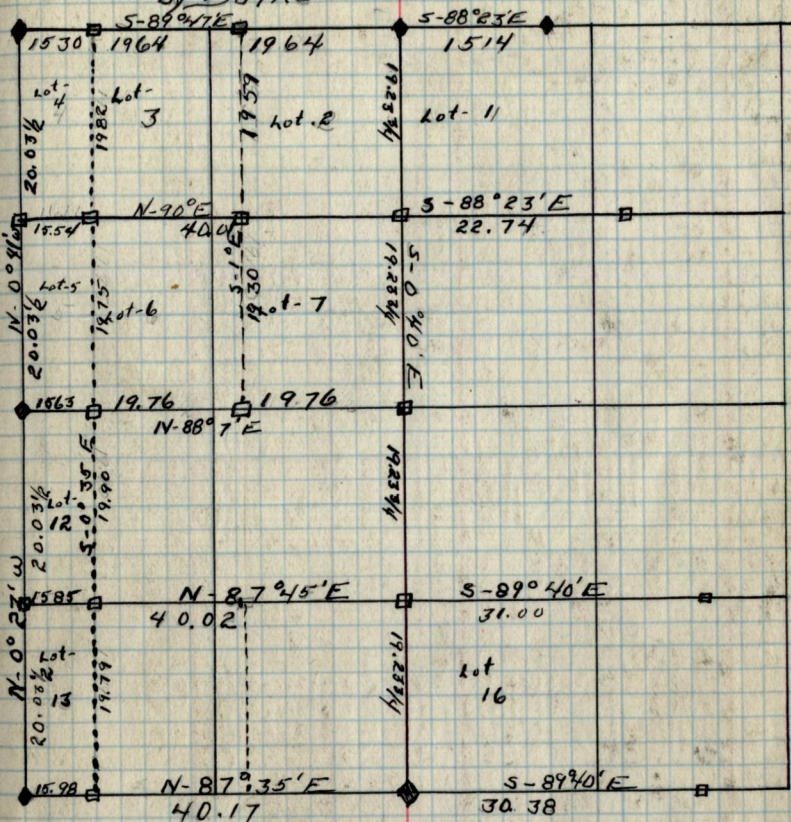
Sec-7 T-14N R-26W 54-P.M
by Balke-



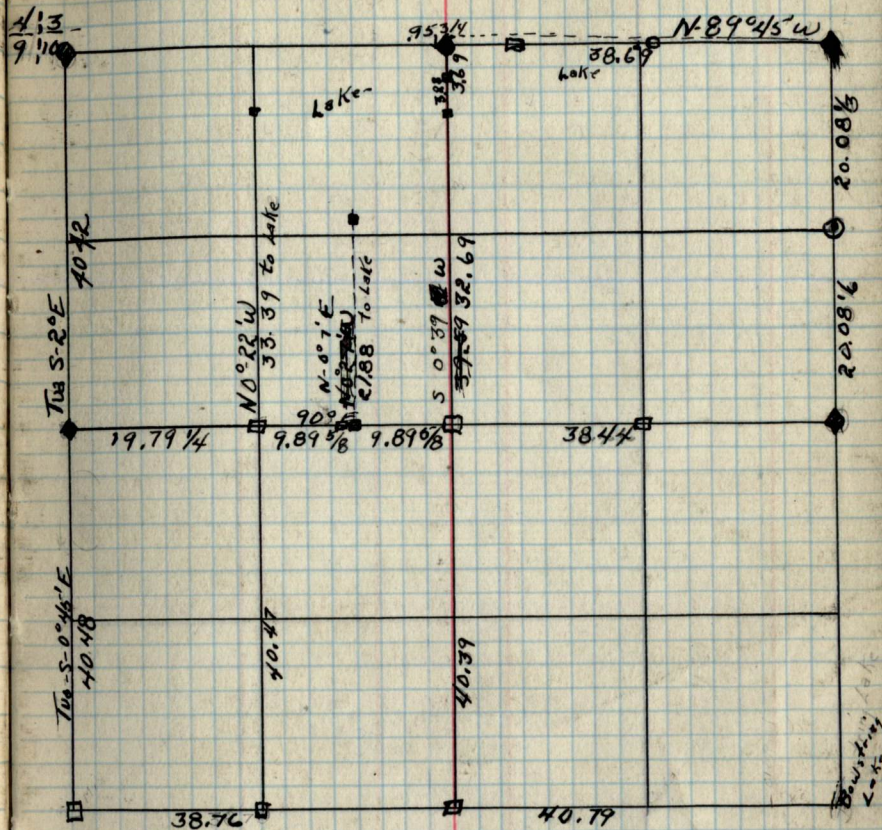
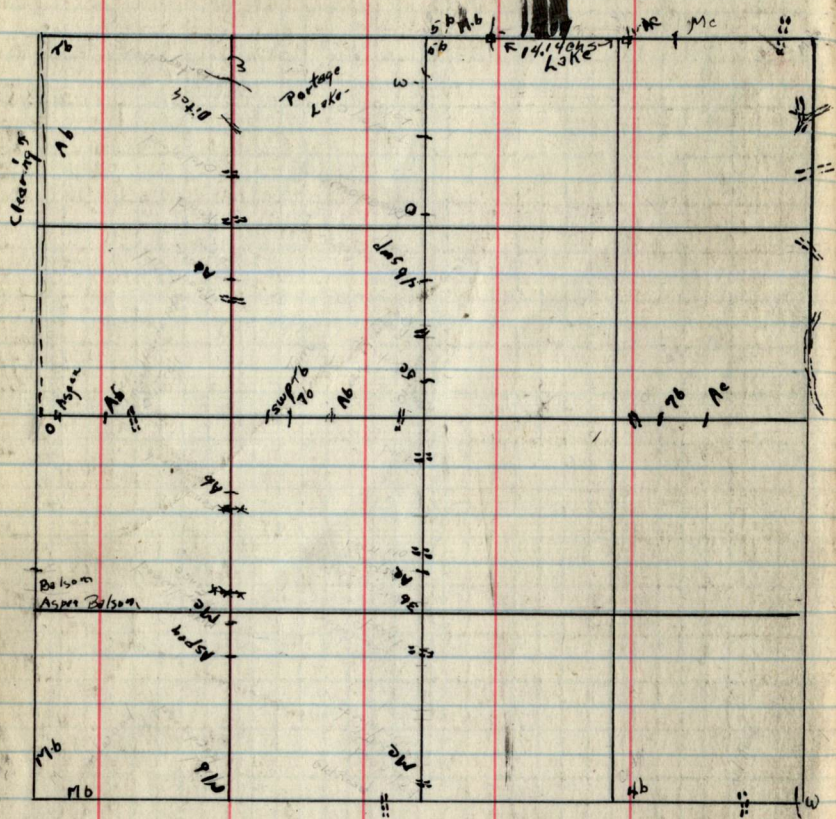
7 8	J Pine	10°	S-66°E	78	M.C.			
18 17	J Pine	10°	N-57°W	64	17	Jam D-	14	S-66°W .6
					1/4	D-J Pine	12	N-63°W .24
					6	J Pine	4	S-66°W .14
					7			



SEC. 8 ON PAGE 6
 Sec 6 T. 147N R. 26W
 by Balke



11/2	D. J. P. A.	12"	N-16°30'W	24
7	J. P. A.	14"	S-65°W	14
M.C. 2	T. J. M.	14"	S-66°W	8
6	T. J. M.	14"	S-66°W	16
36	T. J. M.	14"	S-70°W	14
6	T. J. M.	14"	N-54°W	110
M.C.	D. W. P. A.	24"	S-8°23'E	98
31				
6				

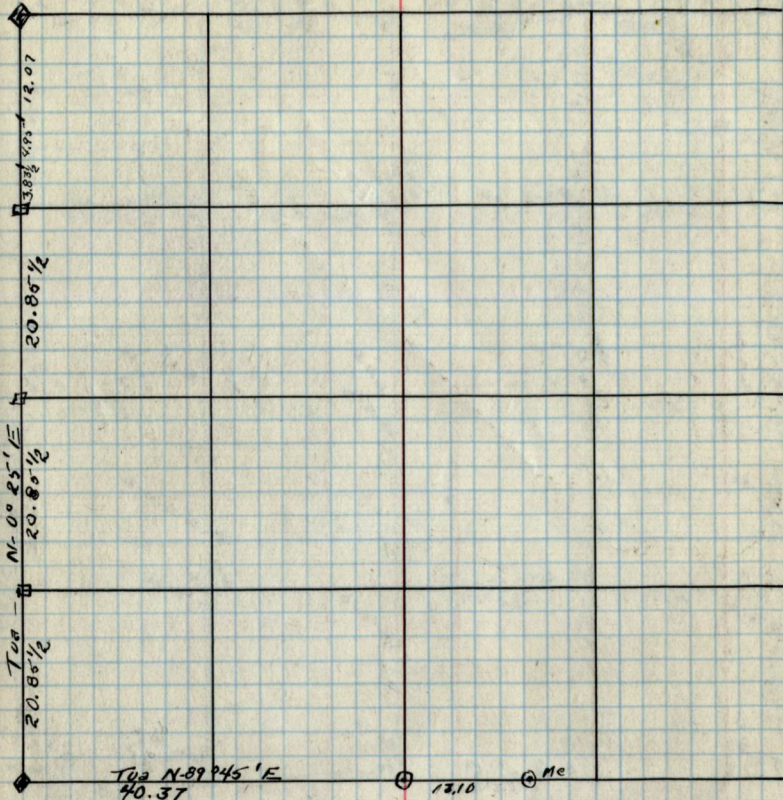
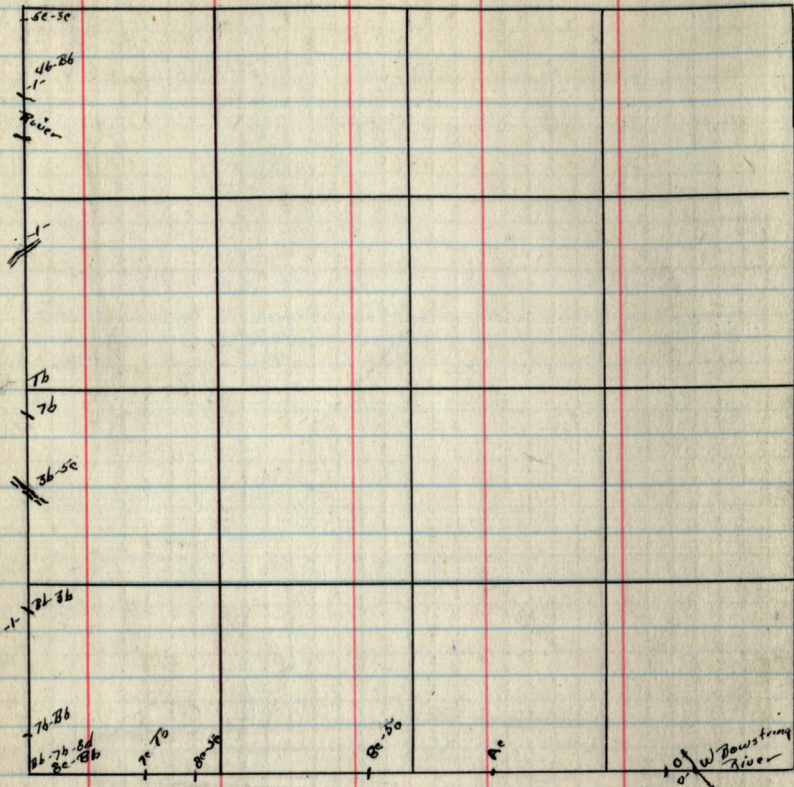


4/3	Road Marker	N 90°E .20	1/6"	Axel Driven in ground
9/10				
3/2	Maple	N 5-36°E 10 1/2	10/11	Axel Driven in ground
10/11	Maple stub	18" N-60°45'W .286		Ash 12" N 12°W .63
				NP stump 12" S 87°E 37
				3 stump P 14" S-75°W .51
				10 stump P 12" N-75°W .63

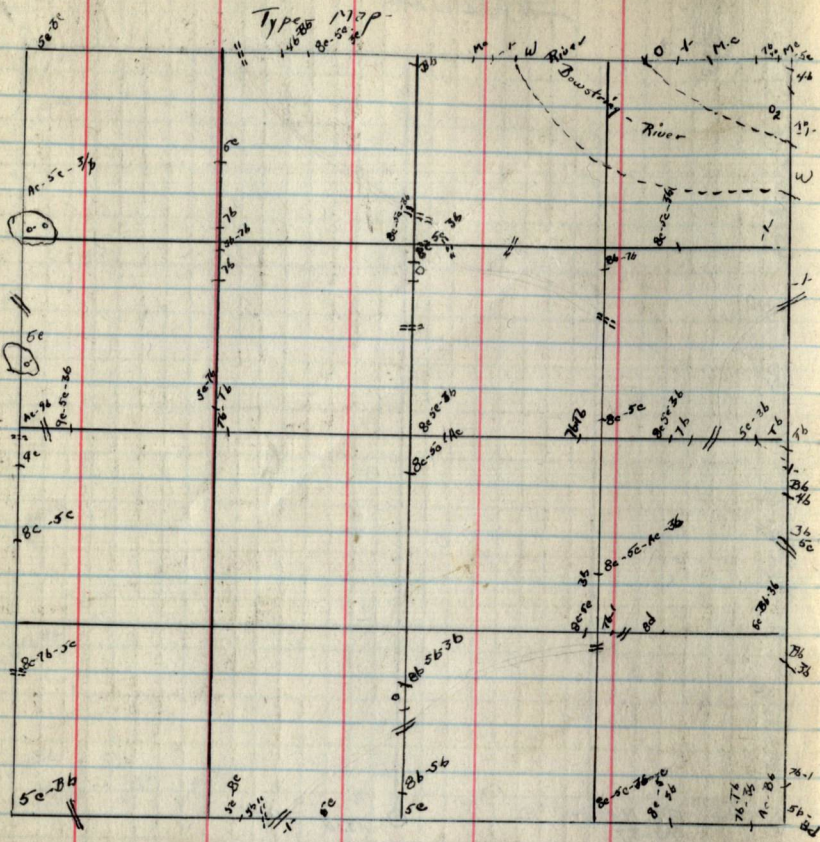
11

11

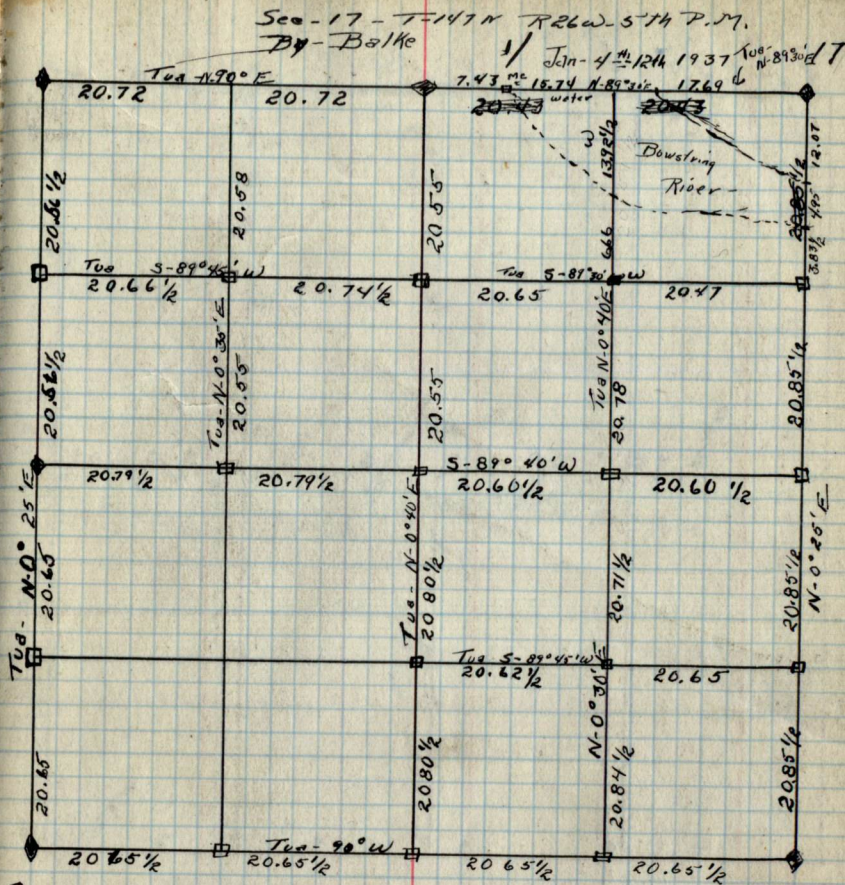
Pages 011-015
are blank



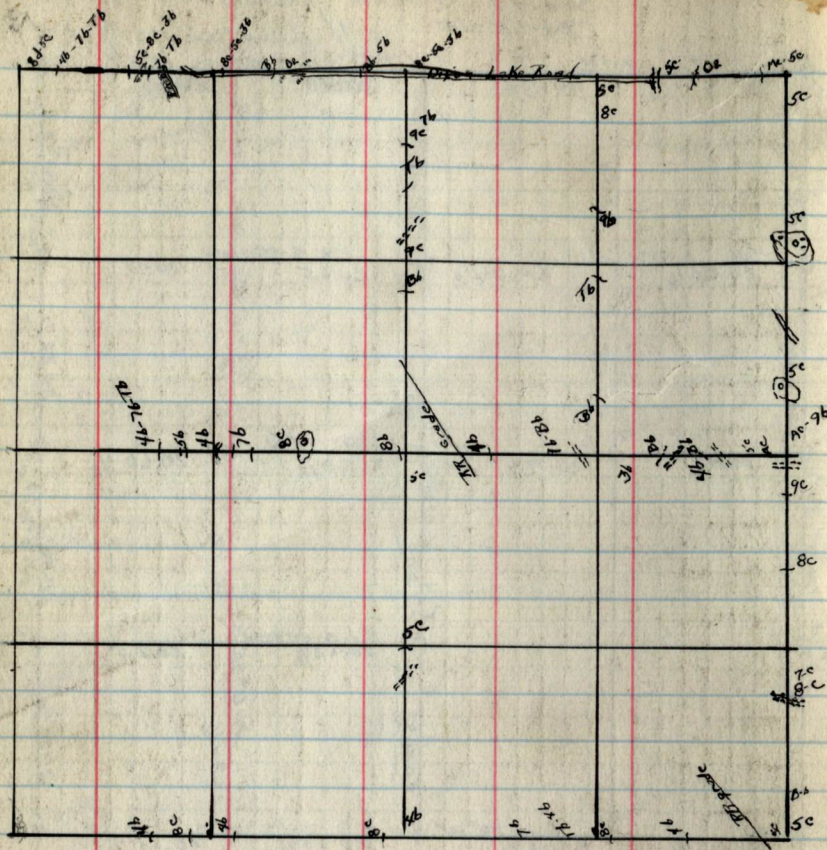
17.16	N. Pine 20"	N-11° E	.18	16	W. Pine	10"	S-87° E	.29
20.12	N. Pine 24"	S-76° E	.18	21	W. Pine	12"	N-33° 30' W	.61
	N. Pine 28"	S-31° E	.20					
8.19	W. Pine 24"	S-56° W	.39					
17.16	N. Pine 24"	N-57° W	.33					



Free Way ===
Roads - Graded —

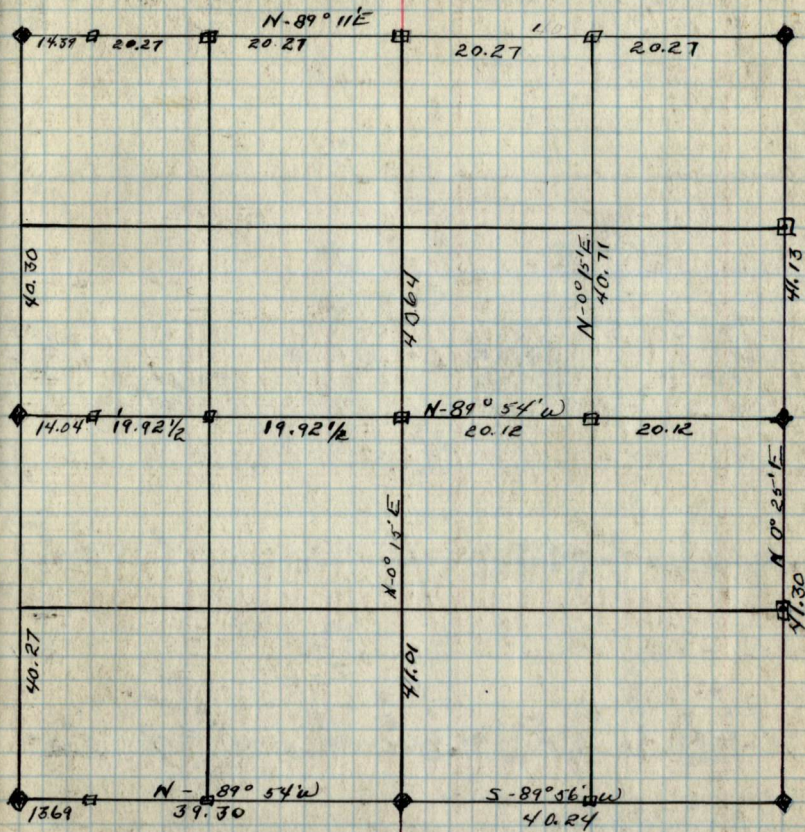


Species - Bearing trees				Bearing Trees			
	DRH	Bearing	Dist	Species	DBH	Bearing	Dist
18 17		Cedar	6" S-98°E .12	18 17	3" Pine	10" N-48°W	.19
19 20		Tam Stump/Hole	N-68°E .9				
		Spruce Stump H/LC	N-40°W .11		Stub N.Pine	22" S-12°E	.38
		Spruce "	S-22°W .12				
7 8		J-Pine	10" S-60°E .78				
18 17		J-Pine	18" N-57°W .64				
17 16		N-Pine S	20" N-11°E .18				
20 21		N-Pine Stump	22" S-36°E .18				
		N-Pine	24" S-31°W .20				
8 9		W.Pine Stump	24" S-56°W .39				
17 16		N-Pine Stump	24" N-57°W .33				



Sec. 18 T-147 N R26 W
by Balke

18



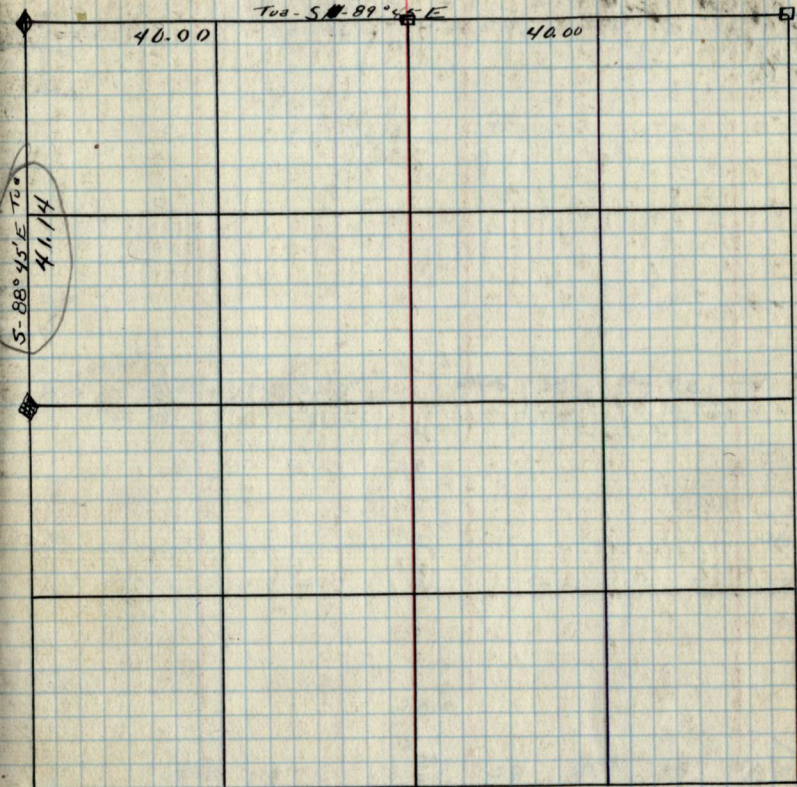
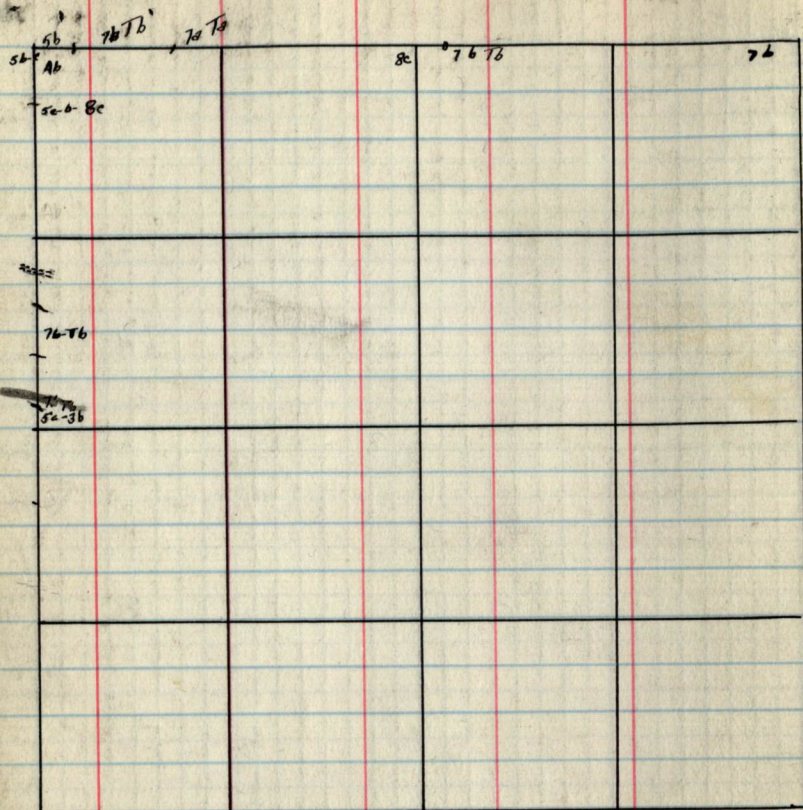
18:17	Cedar	6"	S-48°E	12Lks	18:17	Tam stump	10"	S-46°W	1.80
19:20	Tam stump	Hole	N-58°E	9Lks	18:17	2 Pine	10"	N 48°W	.19Lks
	Spruce stump	Hole	N-40°E	11Lks		Aspen	14"	S-36°E	.53Lks
	Spruce	Hole	S-22°W	12Lks					
7:18	2 Pine	10"	S-60°E	.78					
18:17	2 Pine	10"	N-57°W	.64					

Pages 022-026
are blank

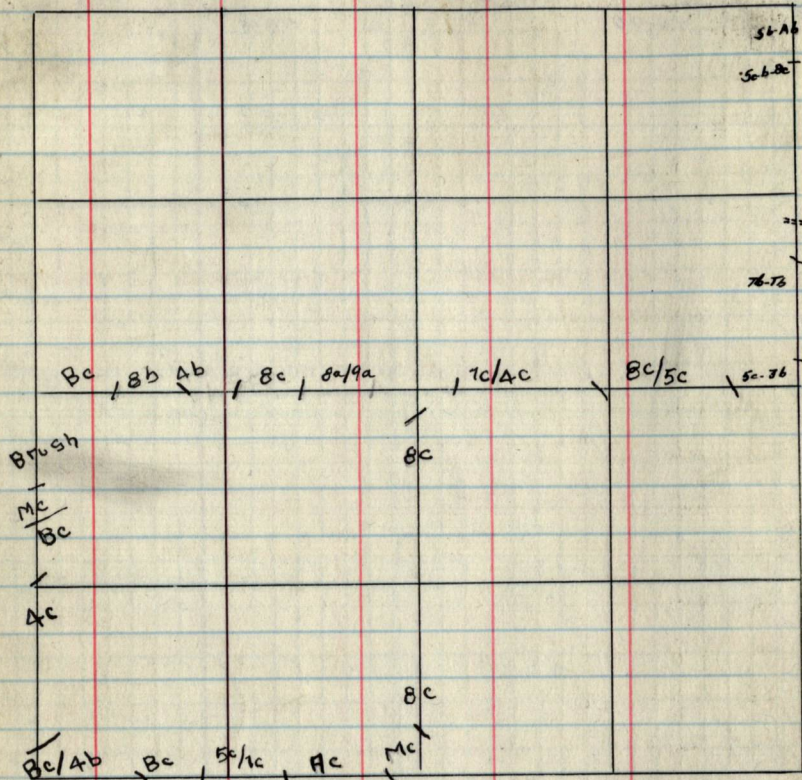
Sec 28 T147N R26W
By Balke Date May 13, 1936

Mag Dec N70°E

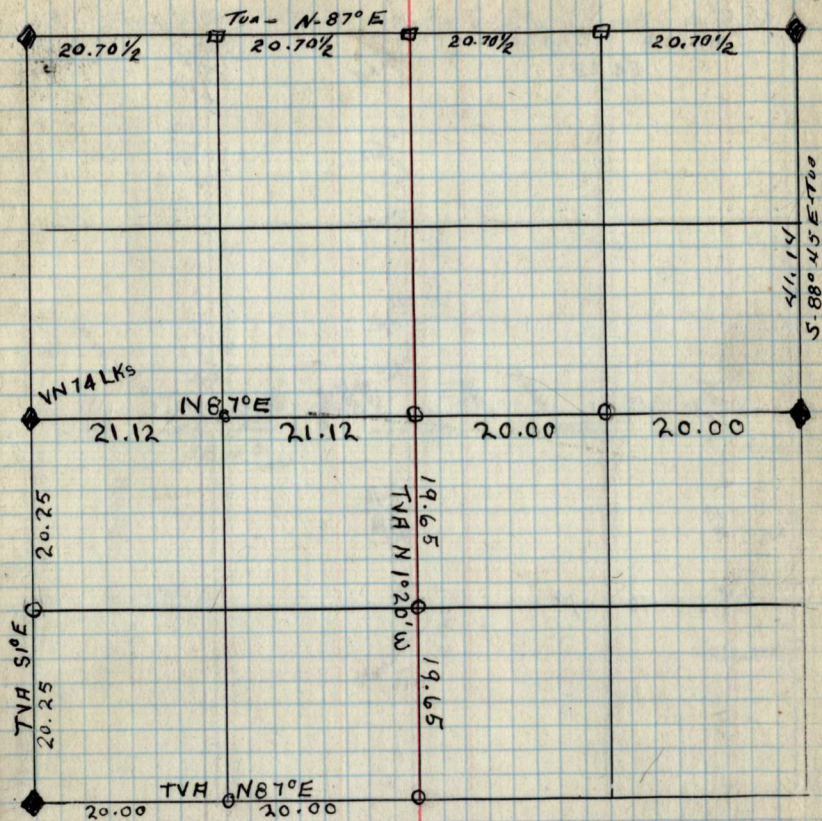
Page - 26



		Bearing Trees				
		Cor	Species	DBH	Bearing	Dist
20/21	N.P. Swamp	28"	N. 45° W	.5	J Pine	8" N 47° W .38
29/28	N.P. "	28"	N. 76° E	.30	Yellow Top	one P. 30° K North
	N.P. "	20"	S. 87° W	.46	J.P.	10" S 61° E 1.0
	N.P. 1"	24"	S. 38° E	.42		
21/22	Set by intersection					
28/27	No Bearing trees used in original surveys by G.L.D. Cause Swamp - Treeless					

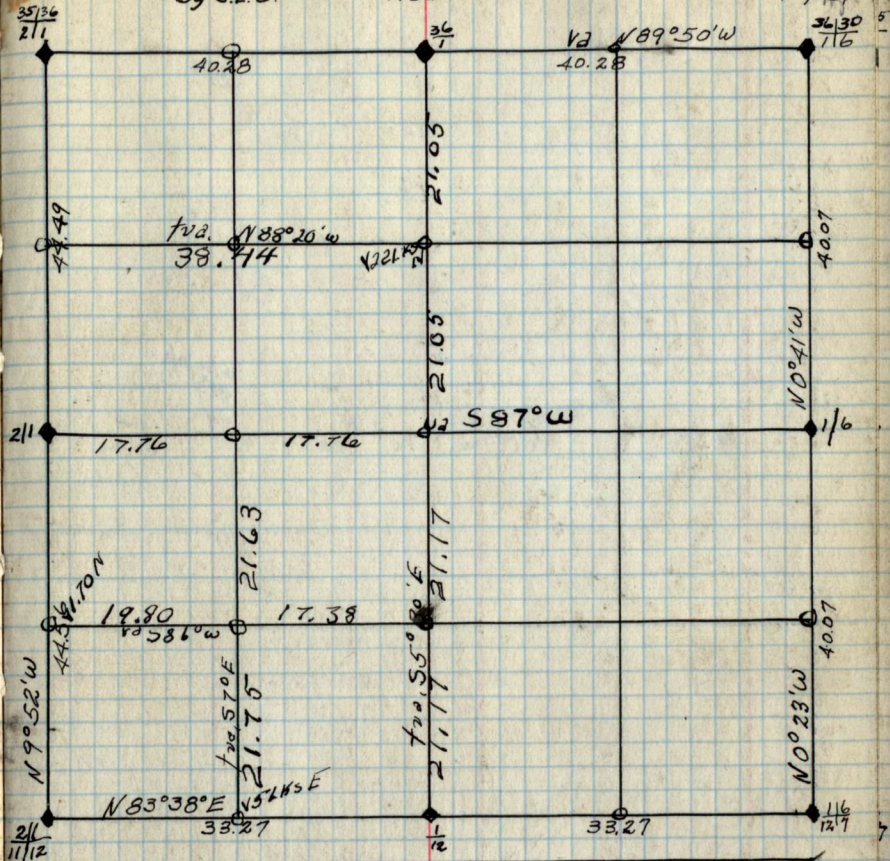
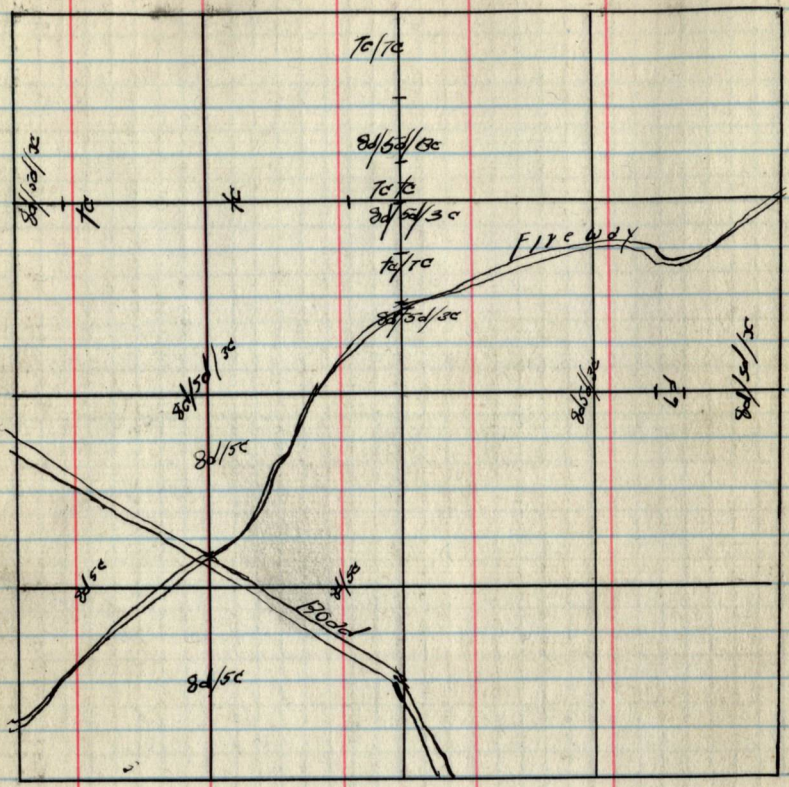


1. H. 11 = 11

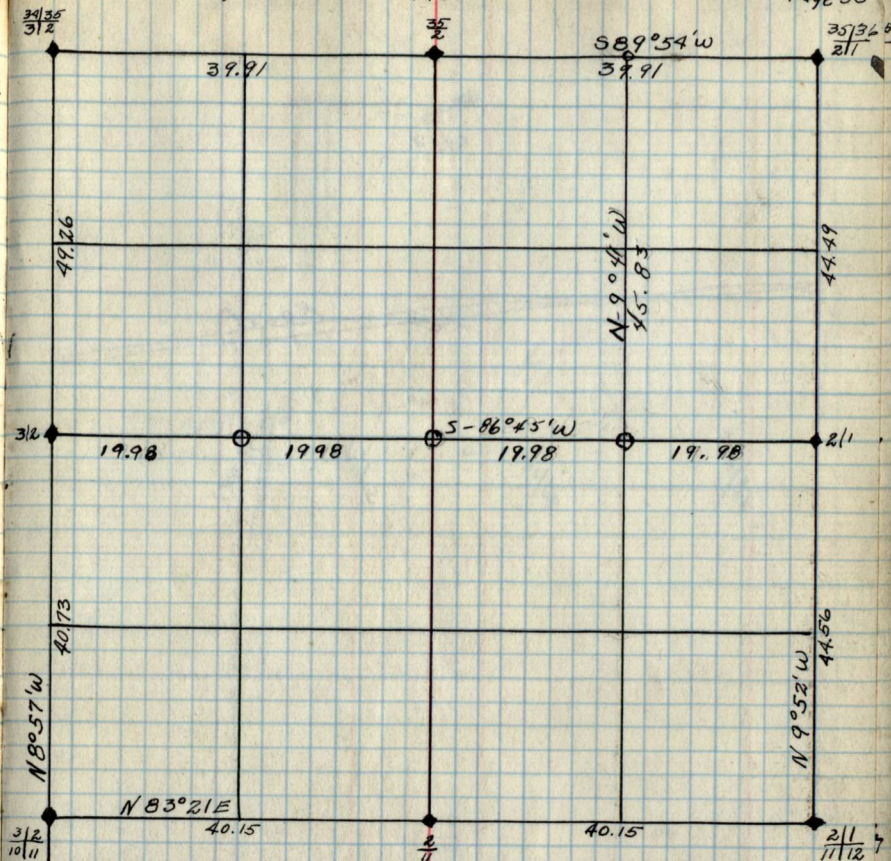
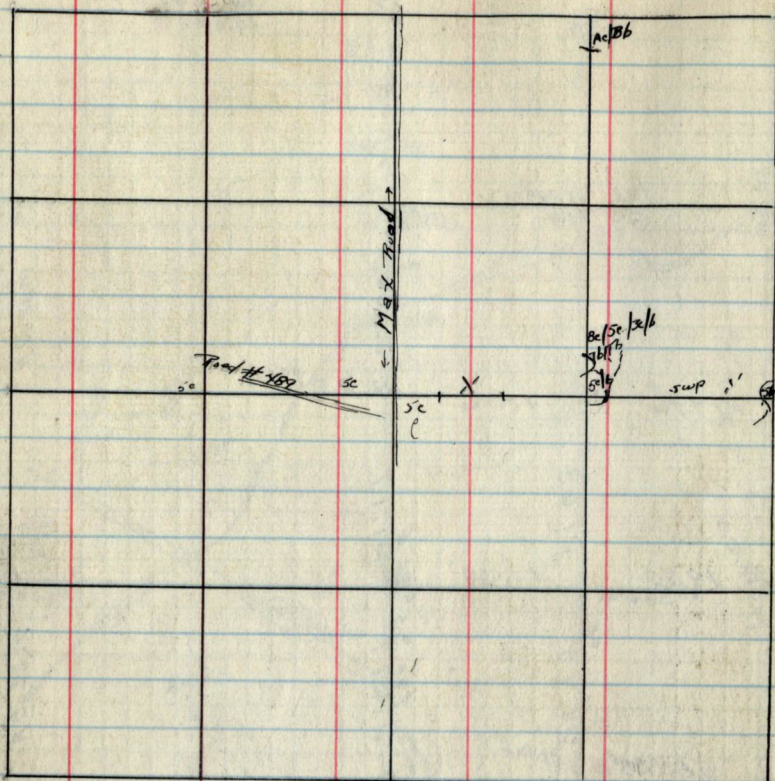


19:20	N. Pine				28:28	J. Pine	8"	N-47°W	.38
30:29	Sage	24°	S-86°W	8.10		yellow T. N. P.	30 LKS	No. 1/4	
20:21	N. Pine slong	28	N-45°W	.5		J. Pine	10"	S-61°E	.46
29:28	N. Pine "	28	N-76°E	.30	29:30	Cedar	16"	S19°E	.45
	Fallen N. Pine "	20	S-47°W	.40	31:32	Cedar	16"	S7°W	.45
	N. Pine "	24	S-83°E	.42					
1/16 #10	N. Pine	20"	North	.17					
1/16 #12	N. Pine	14"	N0°W	.20					
C V 4	Bal.	8"	S1°E	.11					
1/16 #9	Cedar	8"	W0°N	.14					
1/16 #8	Asp.	6"	S61°E	.35					

Pages 032-034
are blank

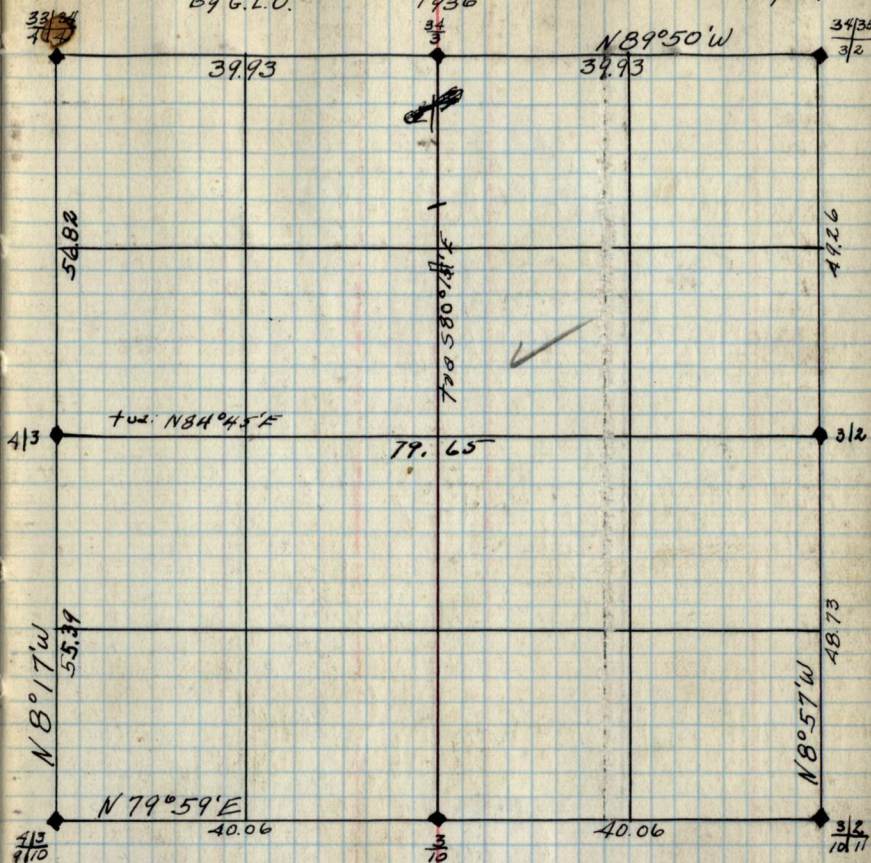
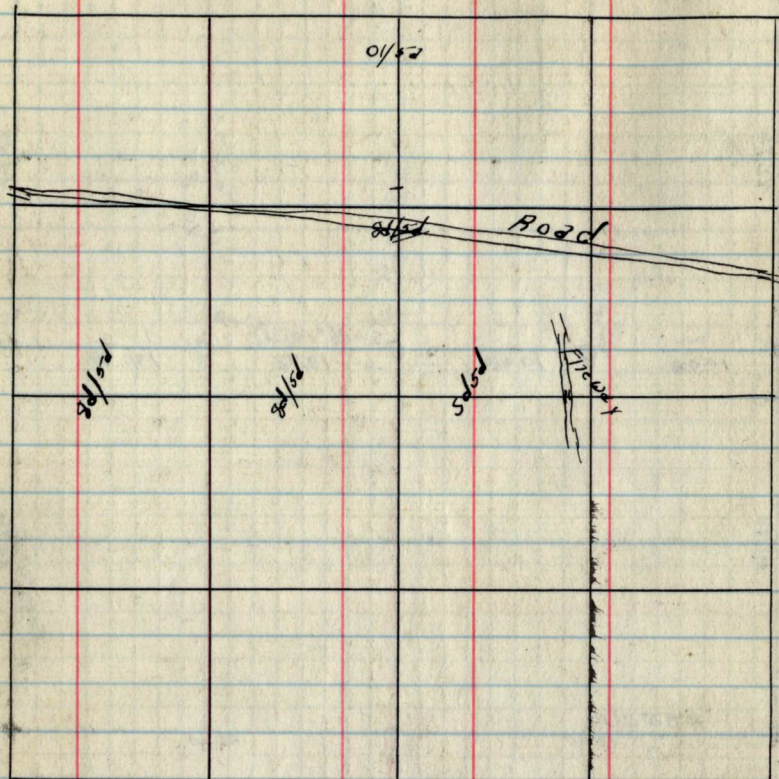


Bearing Trees					Bearing Trees				
Cor.	Species	DBH	Bearing	Dist.	Cor.	Species	DBH	Bearing	Dist.
36/31	Jack Pine	8"	N51 $\frac{1}{2}$ °E	.44	36	Tam.	6"	N52 $\frac{1}{4}$ °E	1.45
7/6	Jack Pine	7"	S43°E	.43	1	Jack Pine	12"	S3°W	.78
	White Pine	5"	S54 $\frac{1}{2}$ °W	.29	2/1	Jack Pine	5"	S11 $\frac{1}{2}$ °E	.94
	Jack Pine	7"	N68°W	.37		Tam.	3"	N33 $\frac{3}{4}$ °W	.29
35/36	Tam.	8"	S82 $\frac{3}{4}$ °E	1.16	1/2	Tam.	4"	N51 $\frac{1}{2}$ °E	1.52
2/1	Tam.	4"	N18 $\frac{1}{2}$ °E	.43		Jack Pine	12"	S81 $\frac{1}{2}$ °W	.57
	Tam.	4"	S41 $\frac{1}{2}$ °W	.40	1/6	Jack Pine	6"	N70°E	.34
	Tam.	4"	N65 $\frac{1}{2}$ °W	.34		Jack Pine	6"	S43 $\frac{1}{2}$ °W	.16
2/1	Jack Pine	12"	N5°E	1.54					
11/12	Jack Pine	14"	S19 $\frac{1}{2}$ °E	.72					
	Jack Pine	7"	S73 $\frac{1}{2}$ °W	.63					
	Jack Pine	9"	N78 $\frac{1}{2}$ °W	.46					
1/6	Jack Pine	16"	S75 $\frac{1}{2}$ °E	.52					
12/7	Jack Pine	14"	S37°W	.40					
	Jack Pine	10"	N33 $\frac{3}{4}$ °E	.24					
	Jack Pine	12"	N46 $\frac{3}{4}$ °W	.29					

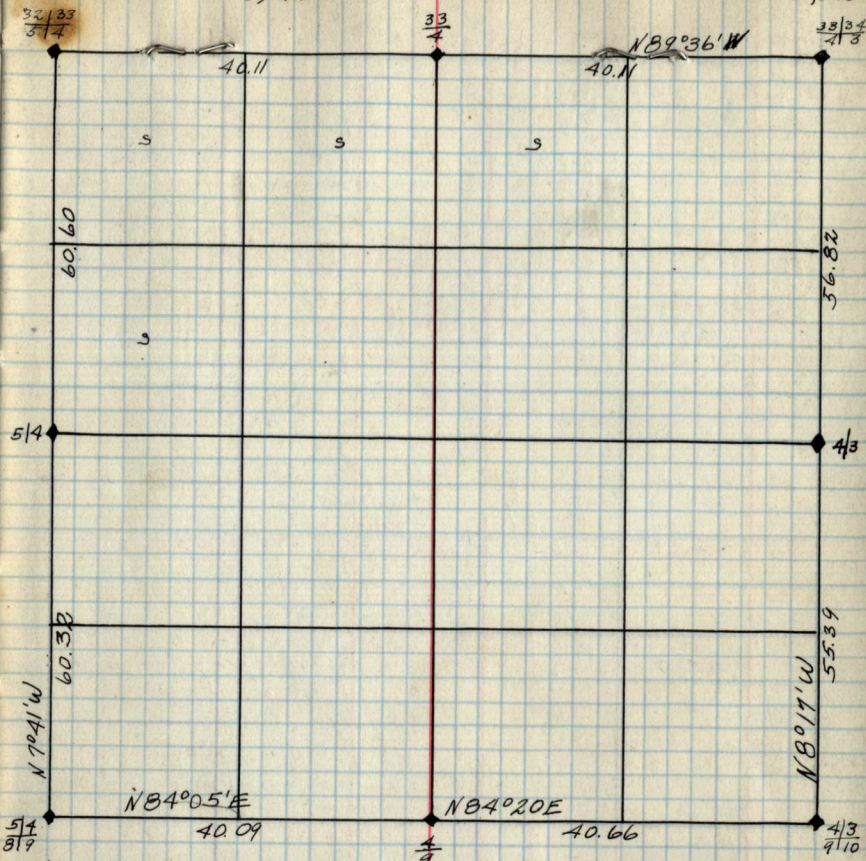


Bearing Trees

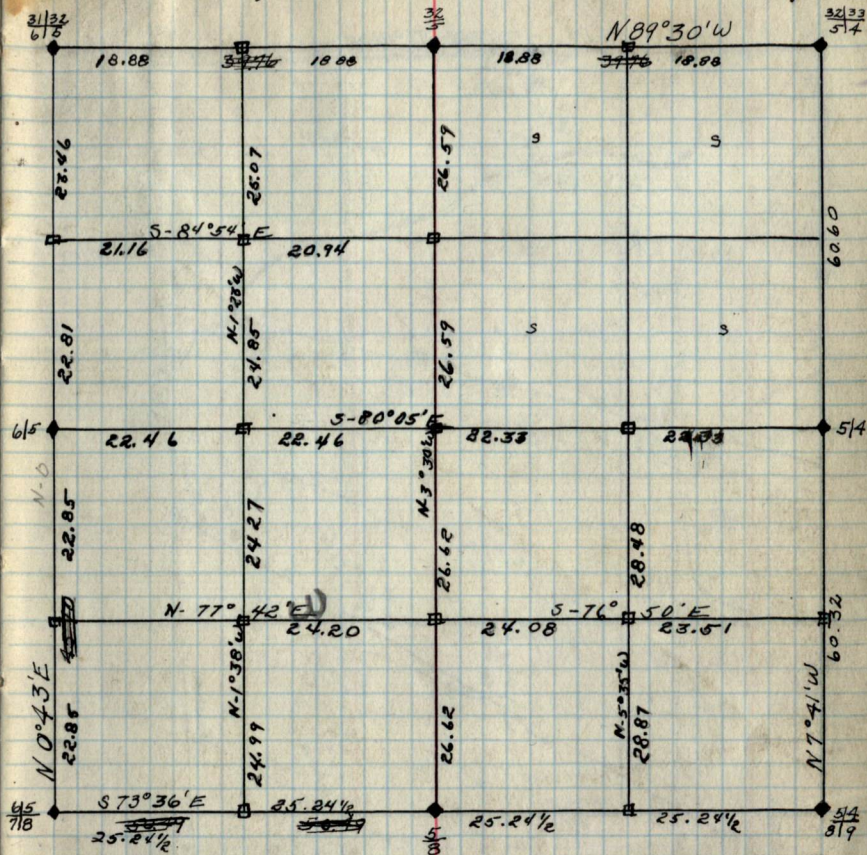
Species	DBH	Bearing	Dist	Cor	Species	DBH	Bearing	Dist
35136 Tam.	8"	S 82 3/4° E	116	35/2	White Pine	16"	N 20 1/4° E	1.73
211 Tam	4"	N 18 1/2° E	43		Jack Pine	8"	S 55 1/2° W	.51
Tam	4"	S 41 1/4° W	40	312	Jack Pine	6"	N 55 1/4° E	.27
Tam	4"	N 65 1/2° W	34		Norway Pine	5"	N 67° W	.55
34135 Norway Pine	14"	N 72 1/2° E	40	2	Norway Pine	12"	N 79 1/4° E	.46
312 Norway Pine	16"	S 13 3/4° E	57	11	Norway Pine	6"	S 43 1/2° W	.50
Norway Pine	12"	N 16 3/4° W	45	2/1	Jack Pine	5"	S 11 1/2° E	.94
Norway Pine	14"	S 36° W	.36		Tamarack	3"	N 93 3/4° W	.29
312 Norway Pine	26"	N 41° E	228					
1011 Norway Pine	26"	N 59 1/4° W	66					
Jack Pine	8"	S 49 3/4° E	42					
211 Jack Pine	18"	N 5° E	154					
1112 Jack Pine	14"	S 19 1/2° E	72					
Jack Pine	7"	S 73 1/2° W	63					
Jack Pine	9"	N 73 1/2° W	46					



Bearing					Bearing				
Cor.	Species	DBH	Bearing	Dist.	Cor.	Species	DBH	Bearing	Dist.
34/35	Norway Pine	14"	N 72 1/2° E	.40	34	Jack Pine	10"	N 69 1/4° W	3.75
3/2	Norway Pine	16"	S 13 3/4° E	.57	3	Jack Pine	4"	S 89° E	.85
	Norway Pine	12"	N 16 1/4° W	.45	4/3	N.P.	16"	N 34 00/8° E	2.33
	Norway Pine	14"	S 36° W	.36		N.P.	8"	N 25 3/4° W	2.30
33/34	N.P.	8"	N 37° E	.50	3/10	J.P.	9"	S 42 3/4° W	.49
3/3	J.P.	14"	S 53 1/2° E	.48		N.P.	10"	N 83 3/4° W	.46
	N.P.	6"	S 9 1/2° W	.80	3/2	Jack Pine	6"	N 53 1/4° E	.27
	Cedar	6"	N 34 1/2° W	.23		Norway Pine	5"	N 67° W	.55
4/3	J.P.	10"	S 27° E	.38					
9/10	J.P.	10"	S 30° W	.38					
	J.P.	12"	N 64 1/2° W	.30					
	J.P.	12"	S 80° W	.14					
3/2	N.P.	26"	N 41° E	2.28					
10/11	J.P.	8"	S 49 3/4° E	.42					
	N.P.	26"	N 59 1/4° W	.66					



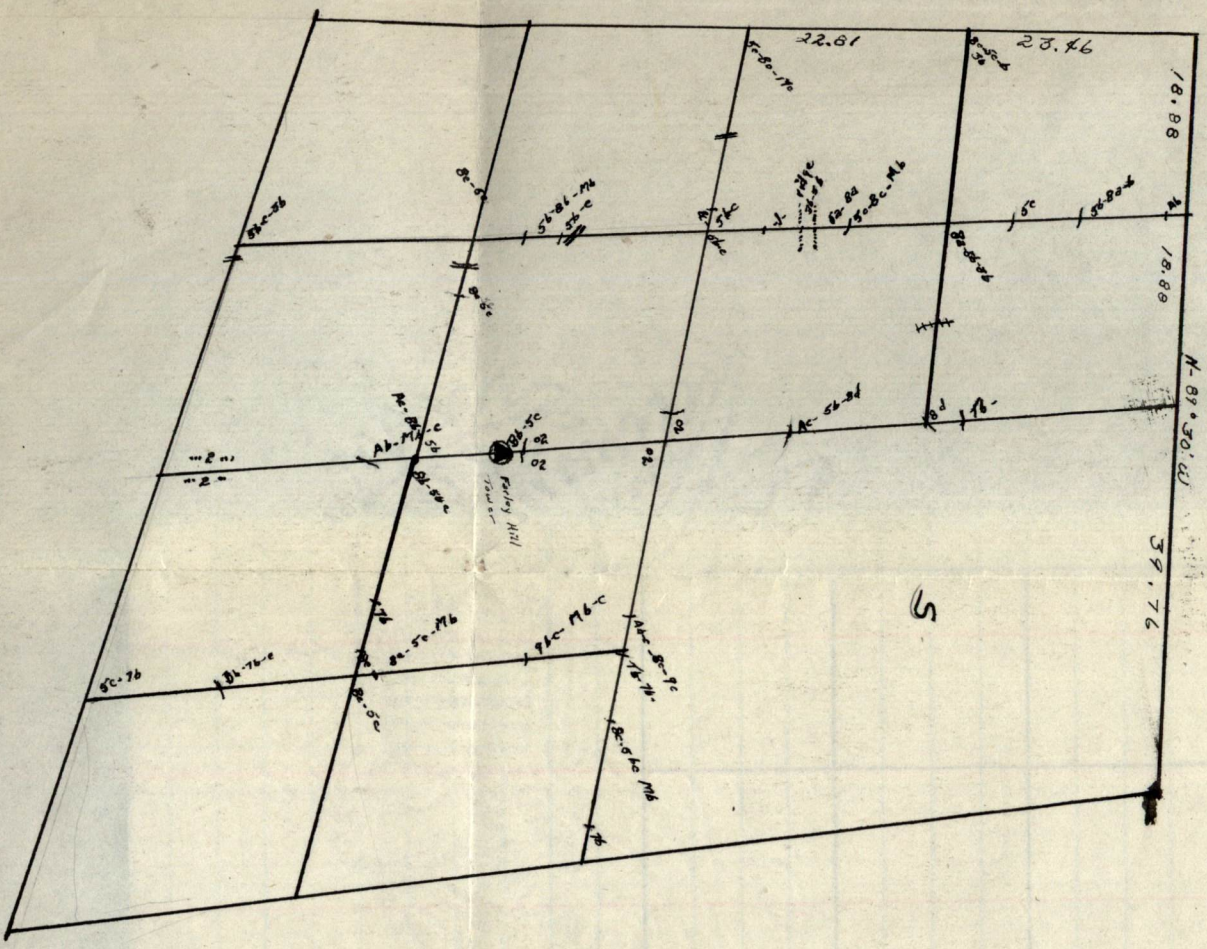
Sec Cor	Bearing Trees				1/4 Mc Cor	Bearing Trees			
	Species	DBH	Bearing	Dist.		Species	DBH	Bearing	Dist.
33/34 4/3	N.P.	8"	N37 1/2°E	.50	33	Birch	4"	N28 3/4°E	.12
	J.P.	14"	S63 3/4°E	.48	4	TAM.	10"	S14 1/2°W	1.60
	N.P.	6"	S9 1/4°W	.80	514	Spruce	5"	S63 1/4°E	.24
	Cedar	6"	N34 3/4°W	.23		Spruce	4"	S10 1/4°W	37 1/2
32/33 514	N.P.	6"	N72°E	1.03	4/9	N.P.	10"	S5 1/2°E	.17 1/2
	N.P.	12"	S22°E	1.13		N.P.	5"	N71°W	.29
	Poplar	8"	N30 1/2°W	.29	4/3	N.P.	10"	N34°08'E	2.33
	N.P.	24"	S40°W	1.02		N.P.	8"	N25 3/4°W	2.30
514 519	N.P.	8"	N64 1/4°E	.54					
	J.P.	5"	S31°E	.20					
	N.P.	9"	S58°W	.32 1/2					
	N.P.	10"	N7°W	.07					
4/3 9/10	J.P.	10"	S27°E	.38					
	J.P.	10"	S30°W	.38					
	J.P.	12"	N64 1/2°W	.30					
	J.P.	12"	S80°W	.14					

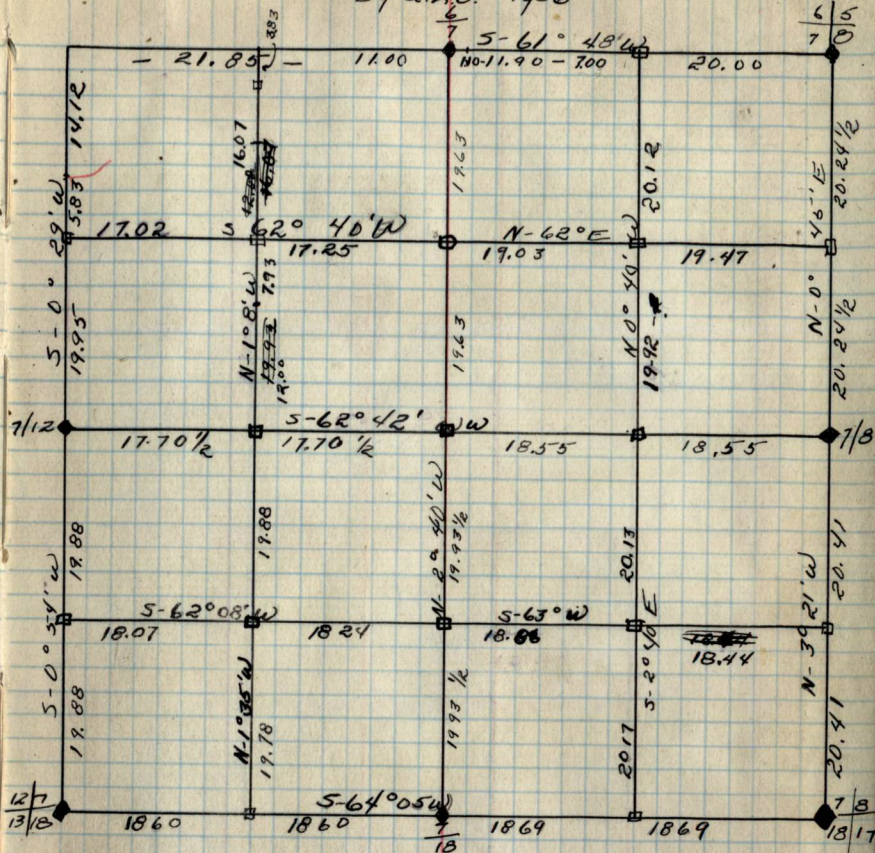
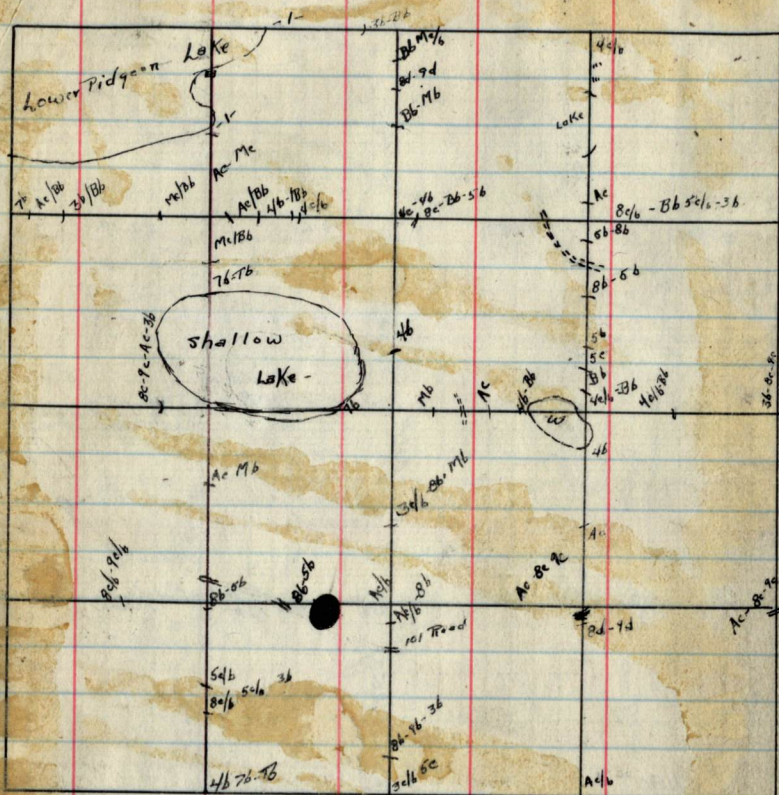


~~31/32~~
31/32
~~54~~
54
~~51/8~~
51/8
~~51/4~~
51/4

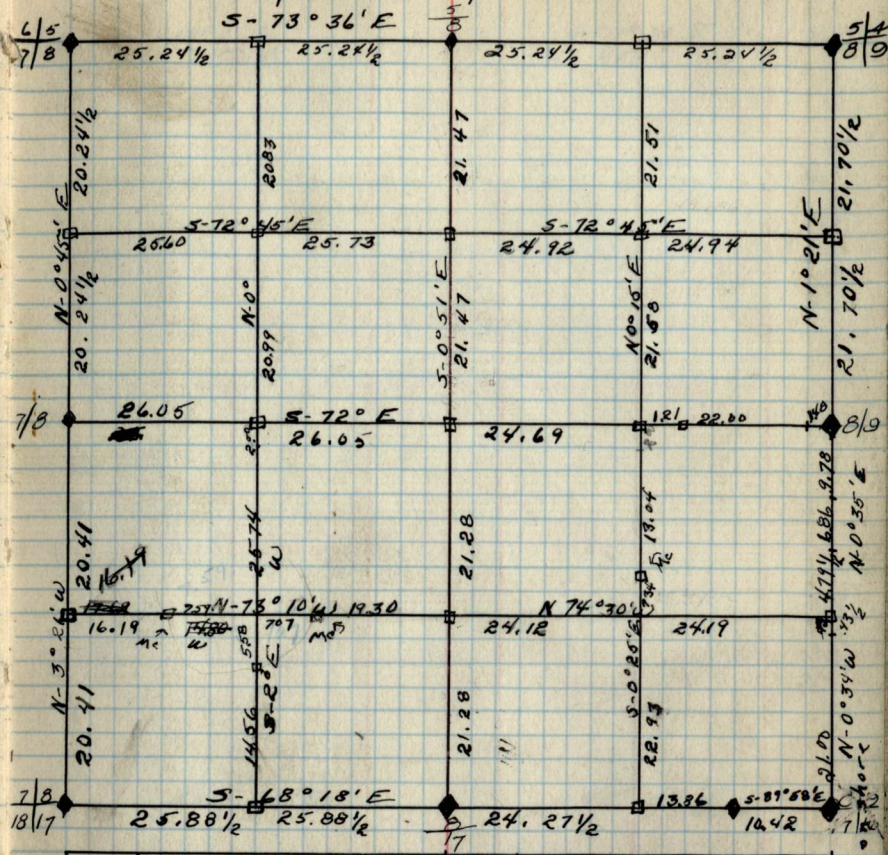
S.E. Cor		Bearing Trees				S.W. Cor		Bearing Trees			
Species	DBH	Bearing	Dist.	Species	DBH	Bearing	Dist.				
N.P.	8"	N64 $\frac{1}{2}$ E	.54	Tam.	4"	N12 $\frac{1}{2}$ W	.025				
J.P.	5"	S31 $\frac{1}{2}$ E	.20	Tam.	4"	N33 $\frac{1}{2}$ W	.14				
N.P.	9"	S58W	.32	J.P.	7"	N51 $\frac{1}{2}$ E	.36				
N.P.	10"	N7 $\frac{1}{2}$ W	.07	N.P.	10"	S35 $\frac{1}{2}$ W	.33				
N.P.	6"	S93 $\frac{1}{2}$ E	.69	N.P.	8"	N73 $\frac{1}{2}$ E	1.40				
Cedar	12"	S49W	.90	N.P.	9"	S46 $\frac{1}{2}$ E	1.85				
N.P.	14"	N37 $\frac{1}{2}$ W	1.63	51/4 Spruce	5"	S63 $\frac{1}{2}$ E	.24				
N.P.	24"	N28E	1.56	Spruce	4"	S10 $\frac{3}{4}$ W	.37 $\frac{1}{2}$				
Balsam	10"	N74 $\frac{1}{2}$ E	.12								
Cedar	8"	N7 $\frac{1}{2}$ E	.98								
Cedar	5"	S32 $\frac{1}{2}$ W	.92								
W. Oak	8"	N23 $\frac{1}{2}$ W	.48								
N.P.	6"	N72 $\frac{1}{2}$ E	1.03								
N.P.	12"	S22 $\frac{1}{2}$ E	1.13								
Poplar	8"	N30 $\frac{1}{2}$ W	.29								
N.P.	24"	S40 $\frac{1}{2}$ W	1.02								

Sec - 5 T-147N R-27W
Scale - 1" per Mile





Sec. Cor.	Bearing trees				Cor.	Bearing trees			
	Species	D.B.M.	Bearing	Dist.		Species	D.B.M.	Bearing	Dist.
6/5	Balsam	10"	N 74° E	.12	6	Maple	8"	N 93 1/2° E	.24
7/8	Cedar	8"	N 7° E	.98	7	Birch	7"	S 25 1/4° W	.38
11	Cedar	5"	S 32 3/4° E	.92	7/12	Spruce	4"	N 59° E	.39
	W. Oak	8"	N 23 1/2° W	.40		Spruce	5"	N 42° W	.32
12/7	A.P.	36"	N 60° E	1.14	7	N.P.	24"	N 80 1/2° W	.73
13/18	N.P.	36"	N 57 1/2° W	.38	18	N.P.	20"	S 55 1/2° E	1.06
7/8	J.P.	10"	S 82 1/2° E	.27	7/12	N.P.	4"	N 6 1/2° E	.26
	W. Pine	14"	S 24° W	.27		N.P.	10"	S 60 1/2° W	.33
	Ash	5"	N 54 1/2° E	.19		N.P.	8"	N 1° E	.24
	Ash	5"	S 62° W	.40		JP	10"	S 60° W	.26
12/7	Ash	7"	N 74° W	.16					
12/7	Tam	10"	S 82° E	1.75					
13/18	Tam	12"	N 82 1/2° E	2.24					
	H3 per	12"	N 55° W	.26					



14.66
7.59

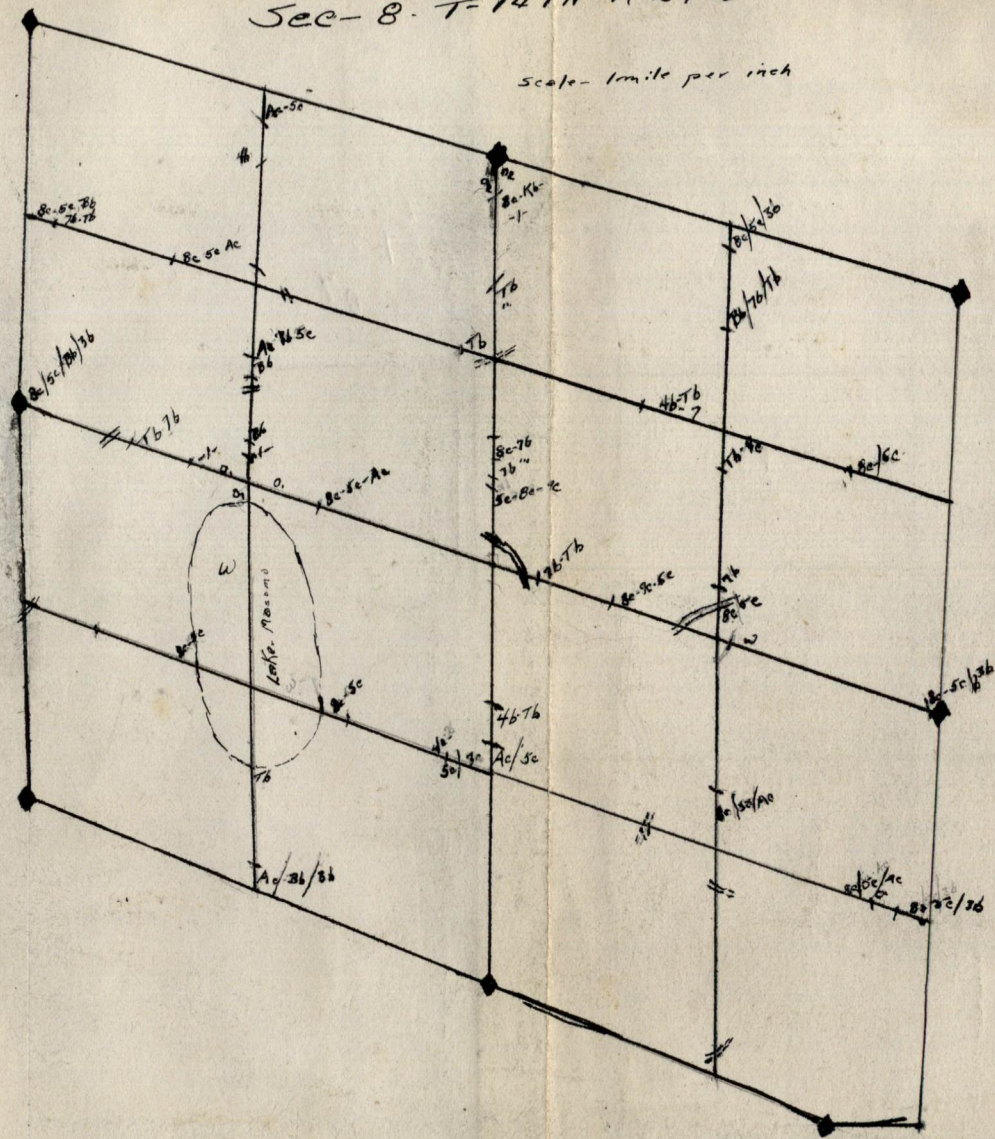
7.07

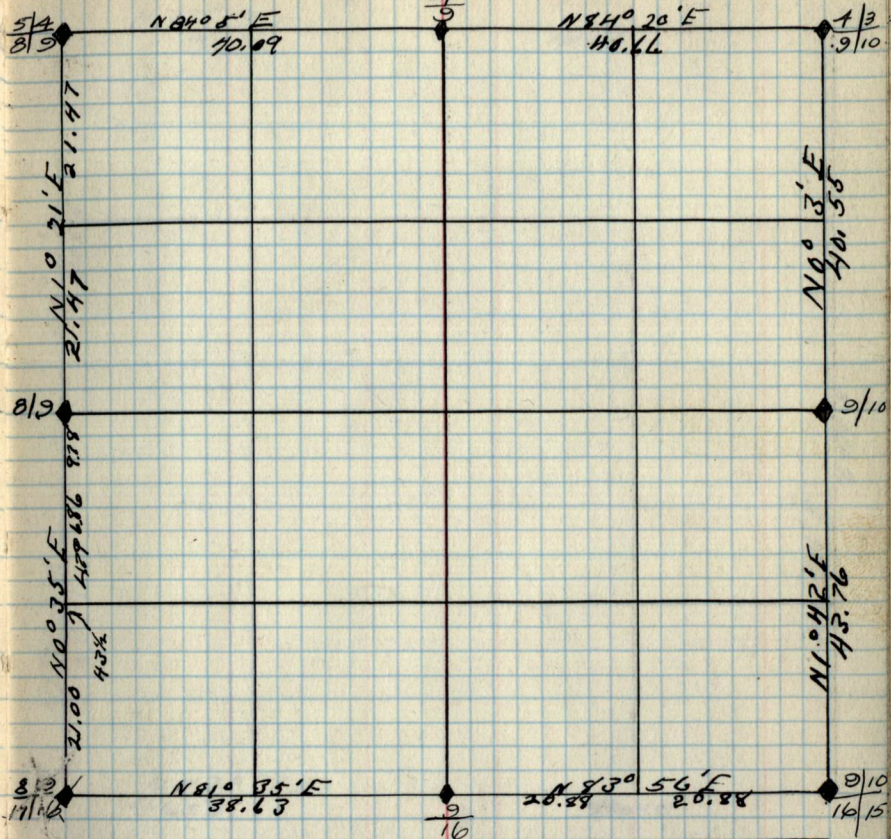
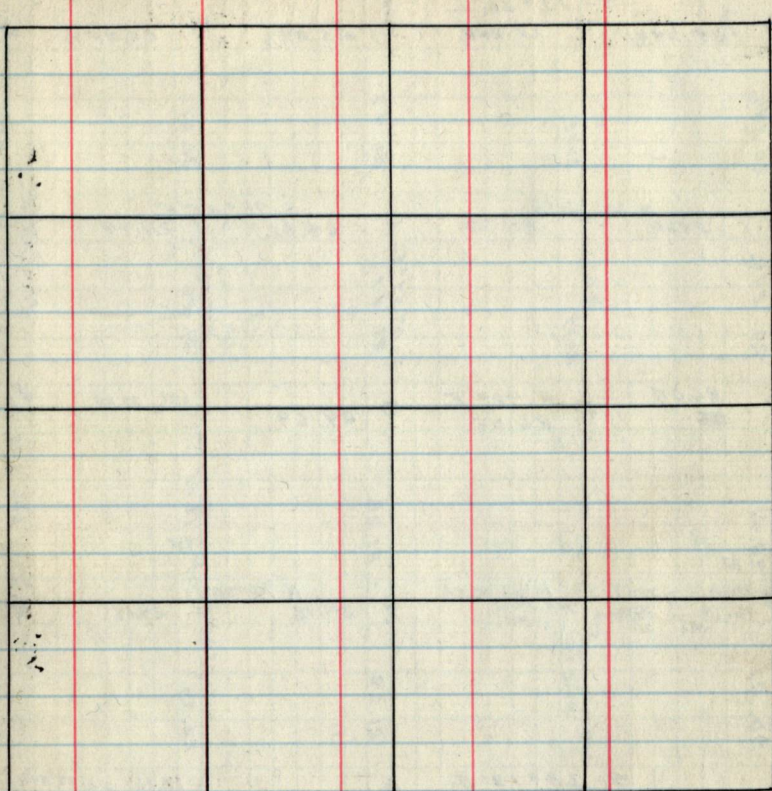
Sec. Cor.	Bearing Trees				Cor.	Bearing Trees			
	Species	D.B.H.	Bearing	Dist.		Species	D.B.H.	Bearing	Dist.
5/4 8/9	N.P.	8"	N 64 1/2° E	.34	5/8	N.P.	8"	N 73 1/2° E	1.46
	J.P.	5"	S 31° E	.20		N.P.	9"	S 46 1/2° E	1.85
	N.P.	9"	S 58° W	.32 1/2		N.P.	4"	N 61 1/2° E	.26
6/5 7/8	N.P.	10"	N 7° W	.07	7/8	N.P.	10"	S 60 1/2° W	.32
	Balsam	10"	N 7° E	.12		N.P.	6"	S 81° E	.15
7/8	Cedar	8"	N 7° E	.33	17/9	W.P.	10"	S 0° E	.10
	Cedar	5"	S 32 1/2° E	.92		N.P.	22"	N 25° W	.87
	W. Oak	8"	N 23 1/2° W	.48		N.P.	16"	S 62 1/2° E	.60
7/8	Ash	5"	N 3 1/2° E	.10					
18/17	Ash	4"	S 30° E	.44					
	Ash	5"	S 12° W	.10					
	Ash	7"	N 74° W	.10					
8/9									
17/16									

Cor. established by M.C. Paris

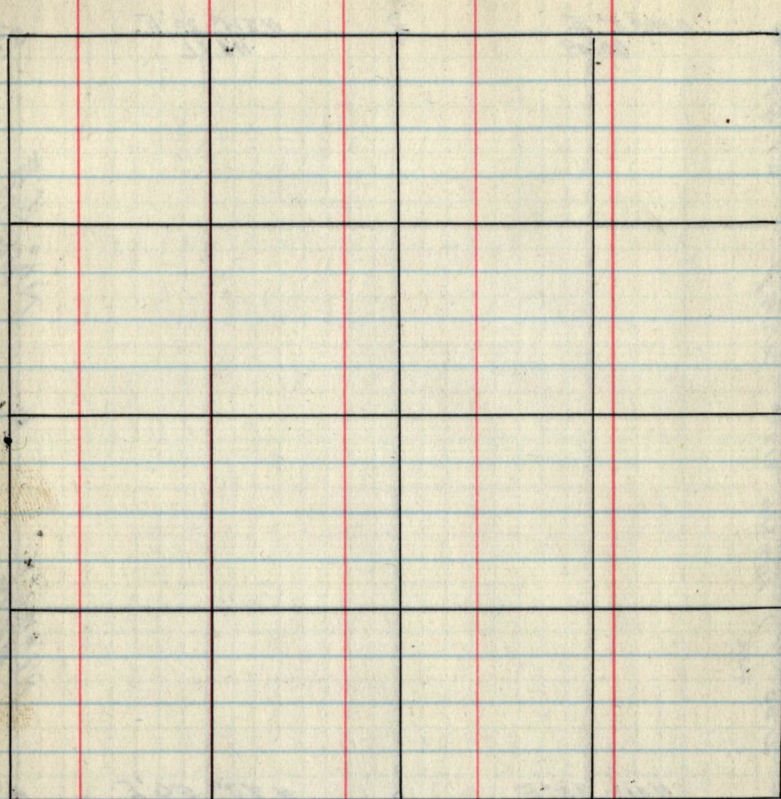
Sec-8-T-147N R27W

Scale - 1 mile per inch





Spec. Cor.	Bearing trees			Cor.	Bearing Trees				
	Species	D.B.H.	Bearing		Dist.	Species	P.B.H.	Bear.	Dist.
4/3	U.P.	10"	S 27° E	.38	7	Norway Pine	10"	S 5 1/2° E	.17 1/2
9/10	U.P.	10"	S 30° W	.38	9	Norway Pine	5"	N 71° W	.29
	J.P.	12"	N 64 1/2° W	.30		Norway Pine	22"	N 25° W	.87
	J.P.	12"	S 80° W	.14	8/9	Norway Pine	16"	S 62 1/2° E	.60
5/4	Norway Pine	8"	N 64 1/2° E	.54	9	White Pine	12"	S 26 1/2° W	1.04
8/9	Jack Pine	5"	S 31° E	.20	16	Norway Pine	14"	N 63 3/4° W	.35
	Norway Pine	9"	S 58° W	.32 1/2	9/10	Jack Pine	8"	S 68° E	.15
	Norway Pine	10"	N 7° W	.07		Jack Pine	10"	S 78° W	.27
9/10	Norway Pine	12"	N 31 1/2° E	.16					
16/15	Norway Pine	14"	S 73 1/4° E	.18					
	Norway Pine	8"	S 73° W	.24					
	Norway Pine	7"	N 50 1/2° W	.25					



4/3
9/10

N 78° 59' E
40.06

40.06

3/2
10/11

N 0° 3' E
40.65

9/10

N 1° 42' E
43.76

10/11
P.H. 8
E. 14. 24. 24
N

9/10
16/15

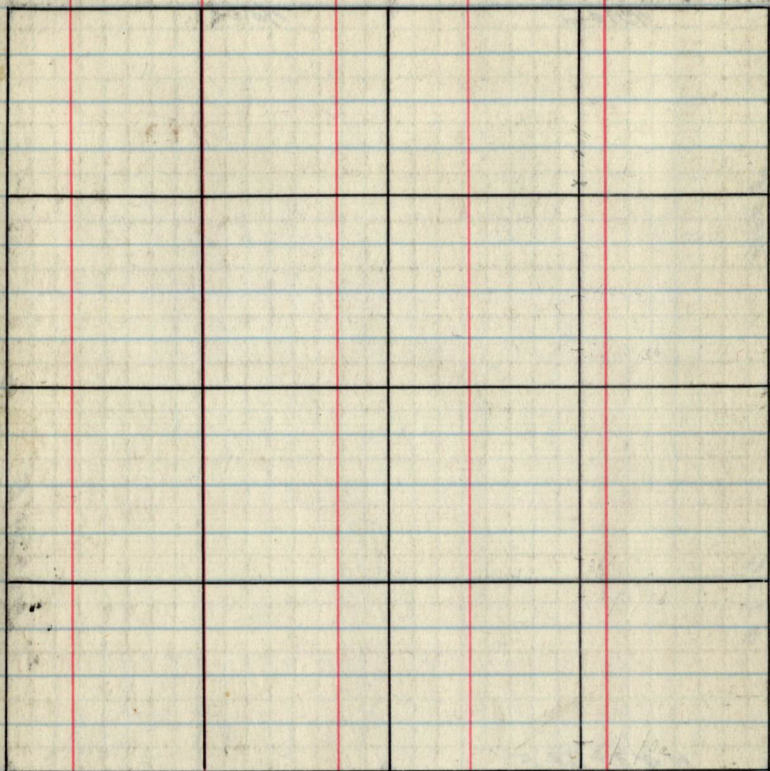
N 83° 38' E
40.03

10/15

40.03

10/11
15/14

Sec. Cor.	Bearing Trees			Cor.	Bearing Trees		
Species	D.B.H.	Bearing	Dist.	Species	D.B.H.	Bearing	Dist.
3/2 Norway Pine	26"	N 41° E	2.28	3 Jack Pine	9"	S 44° W 40	
10/11 Jack Pine	8"	S 19° 3/4 E	.42	10 Norway Pine	10"	N 83° 38' W	.46
Norway Pine	26"	N 59° 44' W	.66	9/10 Jack Pine	8"	S 68° E	.15
4/3 Jack Pine	10"	S 27° E	.38	10 Jack Pine	10"	S 78° W	.27
9/10 Jack Pine	10"	S 30° W	.38	10/15 Norway Pine	14"	N 4° W	.03
Jack Pine	12"	N 64° 1/2 W	.30	Norway Pine	12"	S 45° 1/2 E	.28
Jack Pine	12"	S 80° W	.14	10/11 Norway Pine	10"	S 88° 1/2 E	.15
9/10 Norway Pine	12"	N 31° E	.16	Norway Pine	4"	N 59° 44' W	.42
16/15 Norway Pine	4"	S 73° 1/2 E	.18				
Norway Pine	8"	S 73° W	.24				
Jack Pine	7"	N 50° 1/2 W	.25				
10/11 Norway Pine	8"	N 18° E	.75				
Norway Pine	6"	S 44° E	.35				
15/14 Jack Pine	6"	S 39° 1/2 W	.53				
Norway Pine	8"	N 62° 1/2 W	.68				



3/2
10/11

N83°21'E
40.15

40.15

2/1
11/12

10/11

59.41

11/12

N10°24'E

N039'E
44.56

10/11
15/14

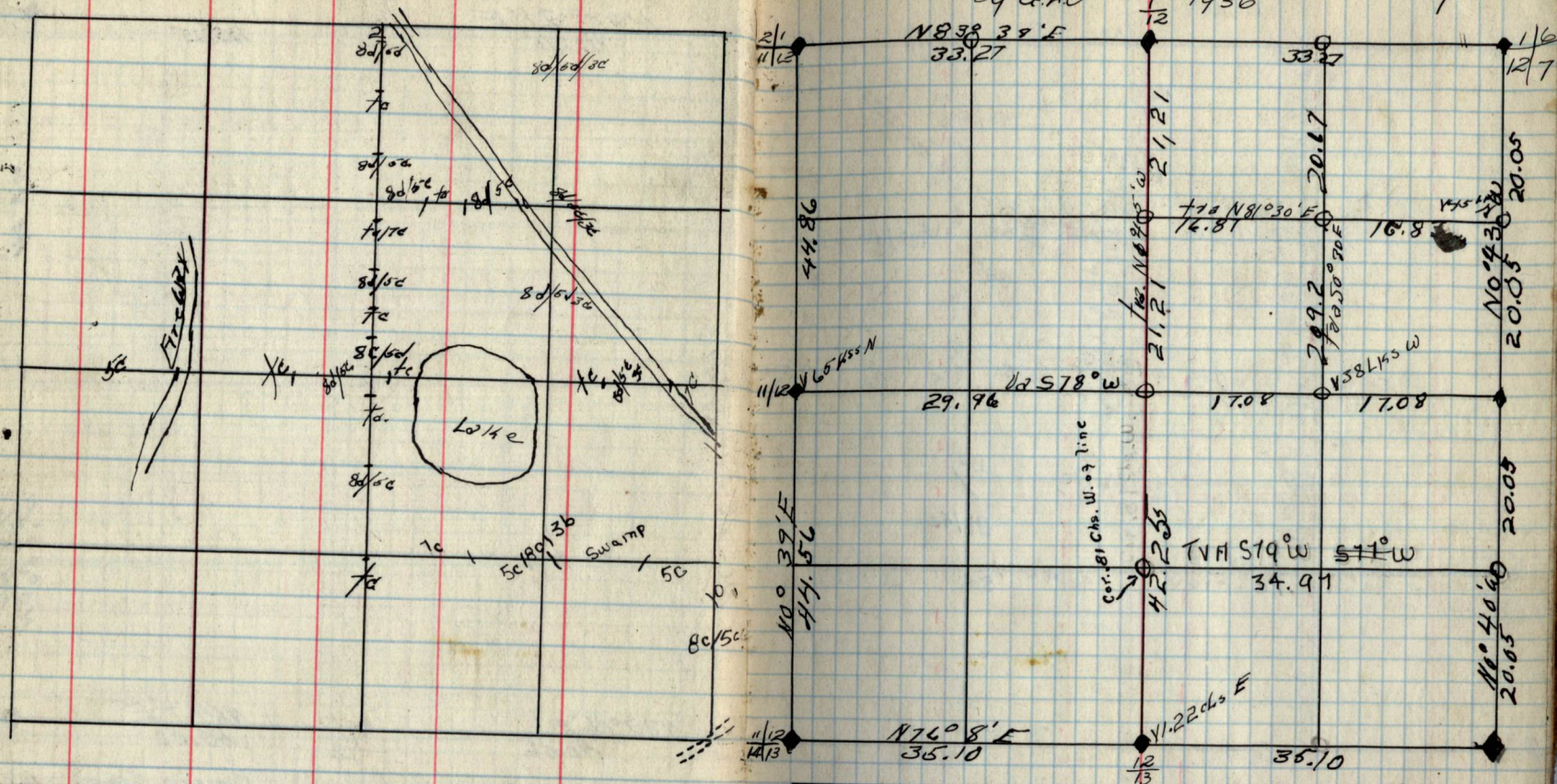
N83°06'E
40.06

11/14

N64.7'E
40.00

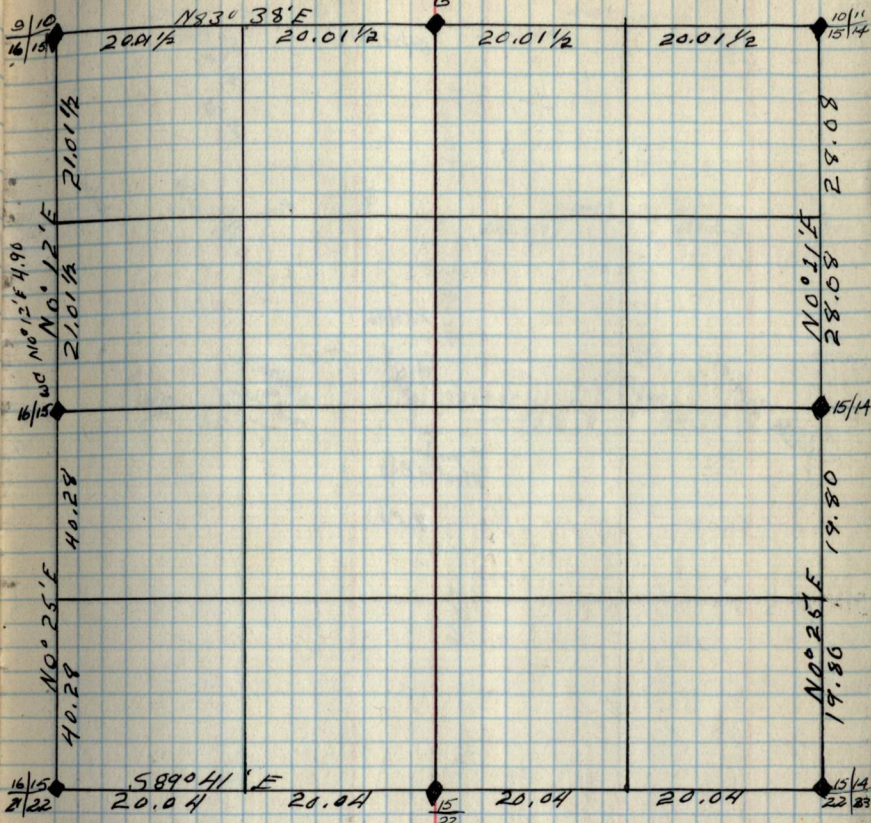
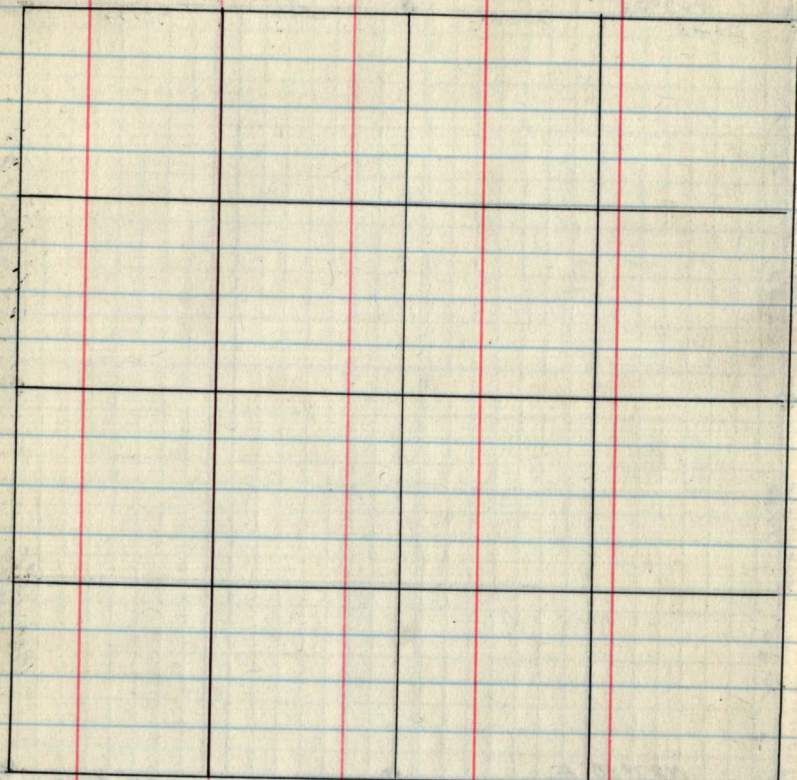
11/12
14/13

Bearing Trees					Bearing Trees					
Sec.	Cor.	Species	D.B.H.	Bearing	Distance	Cor.	Species	D.B.H.	Bearing	Distance
2	1	Jack Pine	12"	N 5° E	1.54	2	Norway Pine	12"	N 77 1/2° E	.46
11	12	Jack Pine	14"	S 19 1/4° E	.72	11	Norway Pine	6"	S 43 1/2° W	.50
		Jack Pine	7"	S 73 1/4° W	.63	10/11	Norway Pine	10"	S 88 1/2° E	.15
		Jack Pine	9"	N 73 1/2° W	.46		Norway Pine	4"	N 59 1/4° W	.42
3	2	Norway Pine	26"	N 41° E	2.28	11	Jack Pine	8"	S 7° W	.04
10	11	Jack Pine	8"	S 49 1/2° E	.42	14	Norway Pine	10"	N 66° W	.32
		Norway Pine	26"	N 59 1/4° W	.66	11/12	Jack Pine	6"	S 85° E	.12
10	11	Norway Pine	8"	N 18 1/4° E	.75		Jack Pine	6"	S 81° W	.07
15	14	Norway Pine	6"	S 44 1/2° E	.35					
		Jack Pine	6"	S 39 1/2° W	.53					
		Norway Pine	8"	N 62 1/4° W	.68					
		Jack Pine	11"	N 39 1/2° E	.35					
11	12	Norway Pine	7"	S 54° E	.23					
14	13	Norway Pine	12"	S 83 1/4° W	.37					
		Jack Pine	12"	N 63° W	.60					



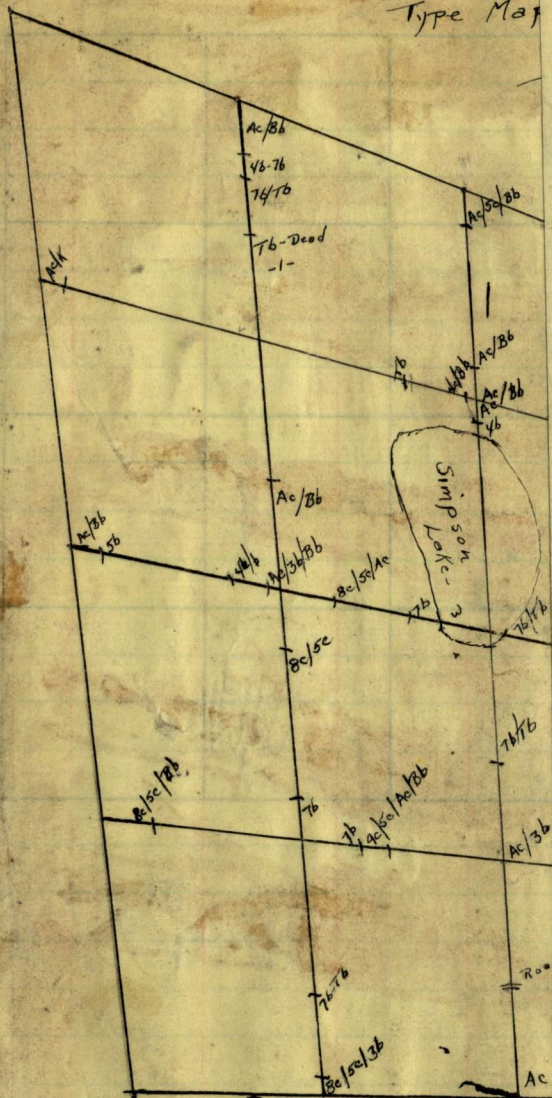
Bearing trees				Bearing trees				
Sec	Cor.	Species	D.B.H. Bearing	Dist	Cor.	Species	D.B.H. Bearing	Dist
1/6		Jack Pine	16" S75 1/2° E	.52	1	Tamarack	4" N57 1/2° E	1.52
12/7		Jack Pine	14" S37° W	.40	12	Jack Pine	12" S81 1/4° W	.57
		Jack Pine	10" N33 1/2° E	.34		Jack Pine	6" S85° E	.12
		Jack Pine	12" N46 3/4° W	.29	11/12	Jack Pine	6" S81° W	.07
2/1		Jack Pine	12" N5° E	1.54	12	Tamarack	3" N52 1/2° E	.26
		Jack Pine	14" S19 1/4° E	.72	13	Tamarack	3" S66 1/2° W	.19
11/12		Jack Pine	7" S73 1/4° W	.63	12/7	Spruce	4" N57° E	.39
		Jack Pine	9" N73 1/2° W	.40		Spruce	5" N10° W	.82
11/12		Jack Pine	11" N30 1/2° E	.35	1/6 #15	W.P.	7" N40° E	.8
14/13		Norway Pine	7" S54° E	.23	1/6 #16	J.P.	9" S42° W	.31
		Norway Pine	12" S83 3/4° W	.37	1/6 #12	Tam.	6" S24° W	.10
		Jack Pine	12" N62° W	.60				
12/7		Norway P.	36" N60° E	1.14				
13/13		N. P.	36" N57 1/2° W	.32				
		J. P.	10" S82 1/2° E	.27				
		W. P.	14" S24° W	.54				

Tag
"



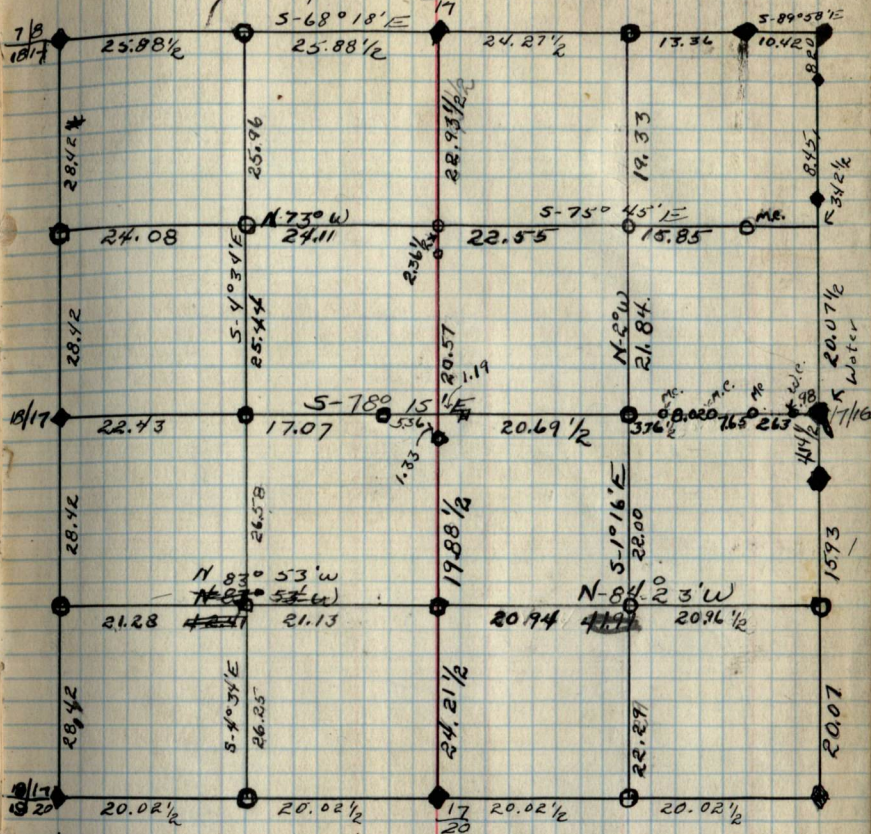
Bearing trees				Bearing trees					
Sec. Cor.	Species	P.B.H.	Bearing	Dist.	Sec. Cor.	Species	P.B.H.	Bearing	Dist.
9/10	Norway Pine	8"	N18 1/2° E	.75	10	Norway Pine	14"	N 4° W	.03
15/14	Norway Pine	6"	S 44 1/2° E	.35	15	Norway Pine	12"	S 45 1/2° E	.28
	Jack Pine	6"	S 30 1/2° W	.53	16/15	Cedar	5"	S 54° E	.65
	Norway Pine	8"	N 62 3/4° W	.68		Cedar	7"	N 70 1/4° W	1.22
9/10	Norway Pine	12"	N 31 1/2° E	.16	15	Jack Pine	5"	N 12 3/4° E	.03
16/15	Norway Pine	14"	S 73 3/4° E	.18	22	Jack Pine	6"	S 13 3/4° W	.60
	Norway Pine	8"	S 73° W	.24	15/14	Norway Pine	12"	N 11 1/2° E	.04
	Jack Pine	7"	N 50 1/2° W	.25		Norway Pine	14"	N 78 1/2° W	.29
16/15	Norway Pine	6"	N 29 1/2° E	.55					
21/22	Norway Pine	8"	S 7° E	.21					
	Norway Pine	14"	S 77 3/4° W	.19					
	Birch	4"	N 32 1/2° W	.33					
15/14	Tamarack	4"	N 76 1/2° E	.42					
22/23	Tamarack	4"	S 25 1/4° E	.46					

Type Map



Sec. 17 T147N R7W
By G.L.O. 8/17 1930

Page 53



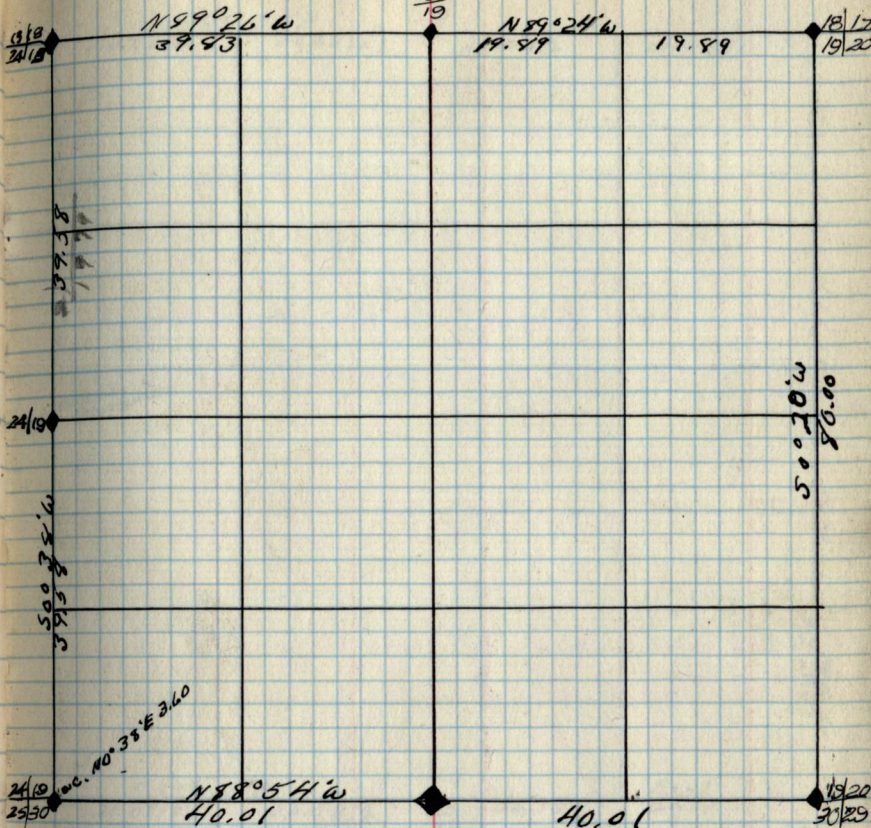
Bearing trees				Bearing trees					
Sec.	Cor.	Species	D.B.H. Bearing	Dist	Sec.	Cor.	Species	D.B.H. Bearing	Dist
7/8		Ash	5" N54 1/2° E	.19	8		Norway Pine	6" S81° E	.15
18/17		Ash	4" S30° E	.44	17		White Pine	10" S0°	.10
		Ash	5" S12° W	.10	18/17		White Oak	6" N62 1/2° E	.47
		Ash	7" N74° W	.16			White Oak	4" N27° W	.11
18/17		Norway Pine	4" N48 1/2° E	.61	17		Ash	5" S40° E	.59
19/20		White Pine	5" S26 1/2° E	.24	20		Ash	6" N48 1/2° E	1.04
		Norway Pine	16" S20 1/2° W	.50	17/16		Birch	5" S40° E	.74
		White Pine	8" N9 1/2° W	.44			Birch	6" S23° W	1.40

Sec. 19 T147NR27W
By G.L.O.

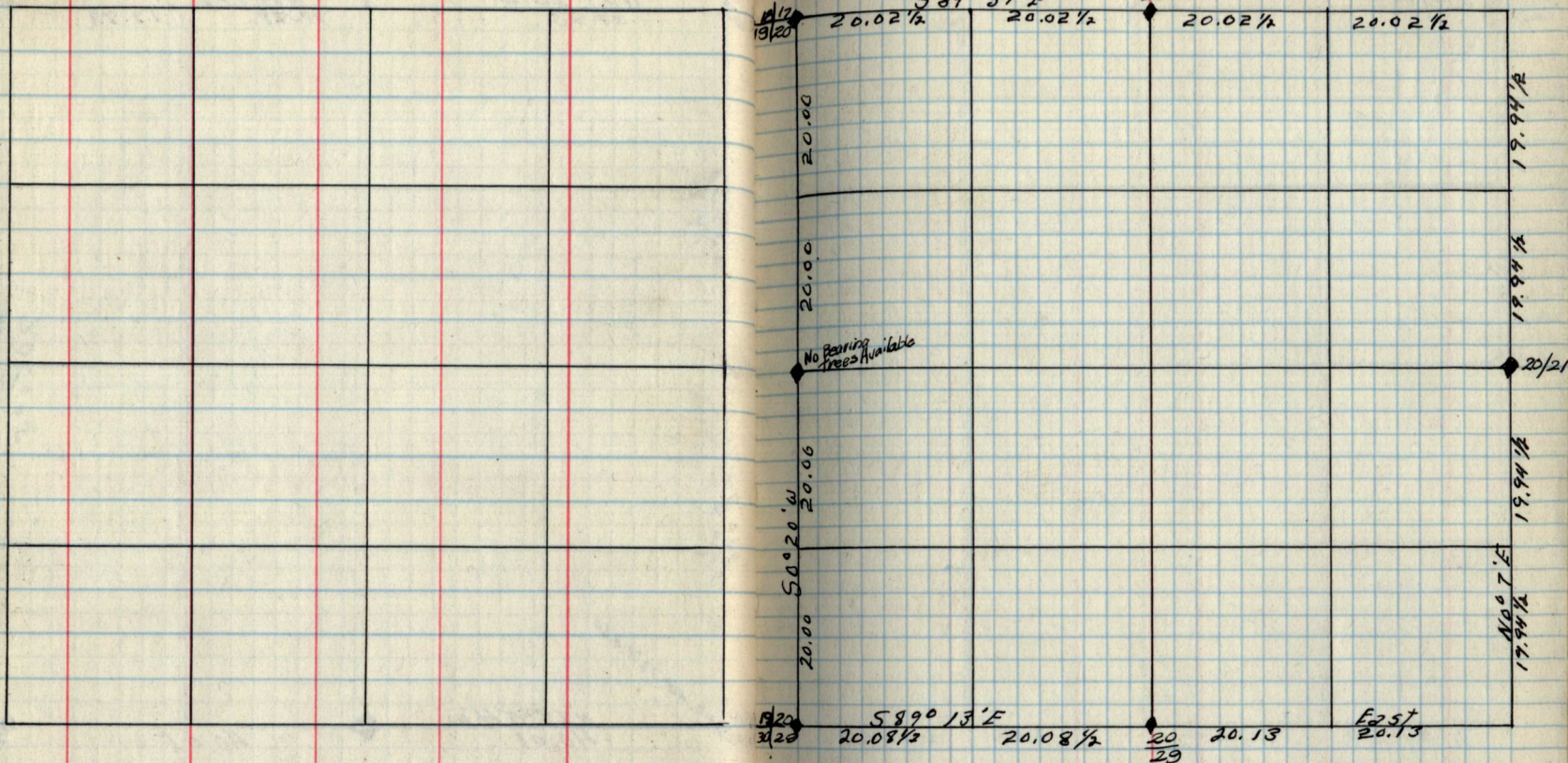
10/19

1936

Page 55



Sec. Cor.	Bearing Trees				Cor.	Bearing trees			
	Species	D.B.H.	Bearing	Dist.		Species	D.B.H.	Bearing	Dist.
18/17	Norway Pine	14"	N40½°E	.61	18	W.Oak	5"	N40½°E	.78
19/20	White Pine	5"	S26¼°E	.24	19	W.Oak	5"	S52¼°E	.64
	Norway Pine	16"	S20½°W	.50	24/19	Cedar	6"	S75½°E	.31
	White Pine	8"	N9½°W	.44		Cedar	6"	N61½°W	.17
13/12	Cedar	12"	N41°E	.34					
24/19	Cedar	6"	S50°E	.58					
	Cedar	8"	S25½°W	.30					
	Cedar	12"	N29½°W	.34					
19/20	Cedar	6"	N40°E	.68					
30/29	Poplar	14"	S5½°E	.13					
	Cedar	5"	S60¾°W	.25					
	Cedar	7"	N30¼°W	.46½					



Sec. Cor.	Bearing trees				Cor.	Bearing Trees			
	Species	DBH	Bearing	Dist		Species	DBH	Bearing	Dist
18/17	Norway Pine	14"	N 48 1/2° E	.616	17	Ash	5"	S 40° E	.50
19/20	White Pine	5"	S 85 1/2° E	.37	20	Elm	6"	N 40 3/4° E	1.04
	Norway Pine	16"	S 43 1/2° E	.70	20	Norway Pine	4"	N 74° E	.09
	White Pine	8"	N 65 1/2° W	.51	29	Norway Pine	8"	S 44 1/2° W	.10
	Norway Pine	16"	S 20 1/2° W	.50	20/21	Birch	6"	N 65° E	.22
	White Pine	8"	N 9 1/2° W	.44		Ash	4"	S 88° W	.40
19/20	Cedar	6"	N 40° E	.69					
30/29	Pop.	14"	S 5 1/2° E	.13					
	Cedar	5"	S 60 3/4° W	.25					
	Cedar	7"	N 30 1/4° W	.46 1/2					

Sec. 21 T147 NR27W

By G.H.O

1936

Page 57

N83°59'E
39.65

16
21

25.60

N86°26'E 16/15
15.34 21/22

19.94 1/2

19.94 1/2

19.94 1/2

N90°7'E
19.94 1/2

19.90

19.70

21/22

19.71

N61°41'
19.90

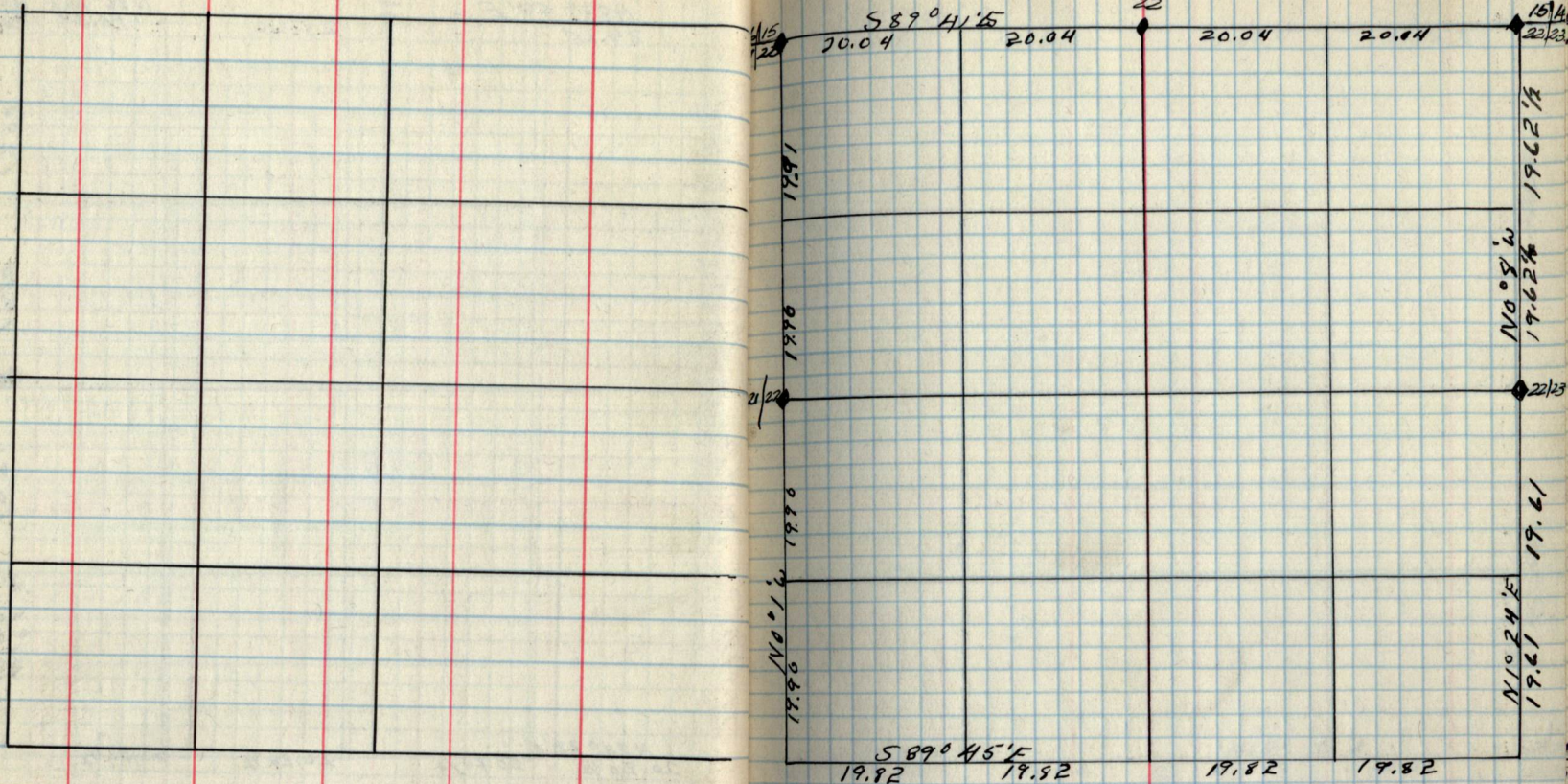
N84°25'E
20.20 1/2

20.20 1/2

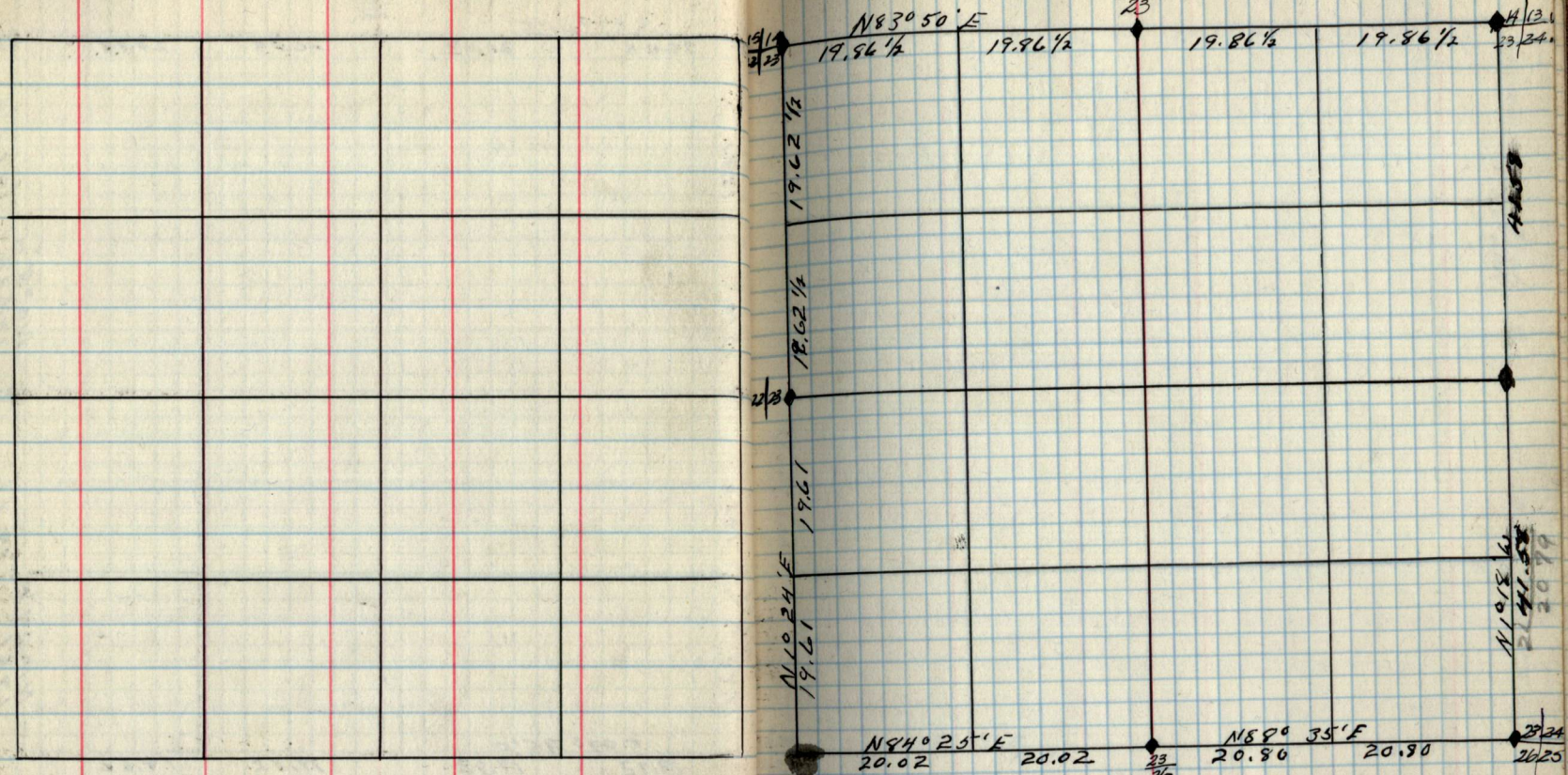
20.20 1/2

20.20 1/2

Sec. Cor.	Bearing trees				Cor.	Bearing trees			
	Species	DBH	Bearing	Dist.		Species	DBH	Bearing	Dist.
16/15	Norway Pine	6"	N29 1/2°E	.55	16	Norway Pine	7"	S43 1/2°W	.21
21/22	Norway Pine	8"	S7°E	.21	21	Norway Pine	7"	N46 1/2°W	.79
	Norway Pine	14"	S77 3/4°E	.19	20/21	Birch	6"	N65°E	.22
	Birch	4"	N35 1/2°W	.33		Ash	4"	S88°W	.40
					21/22	Norway Pine	16"	S76 3/4°W	2.24
						Bur Oak	4"	S13 1/2°E	.80



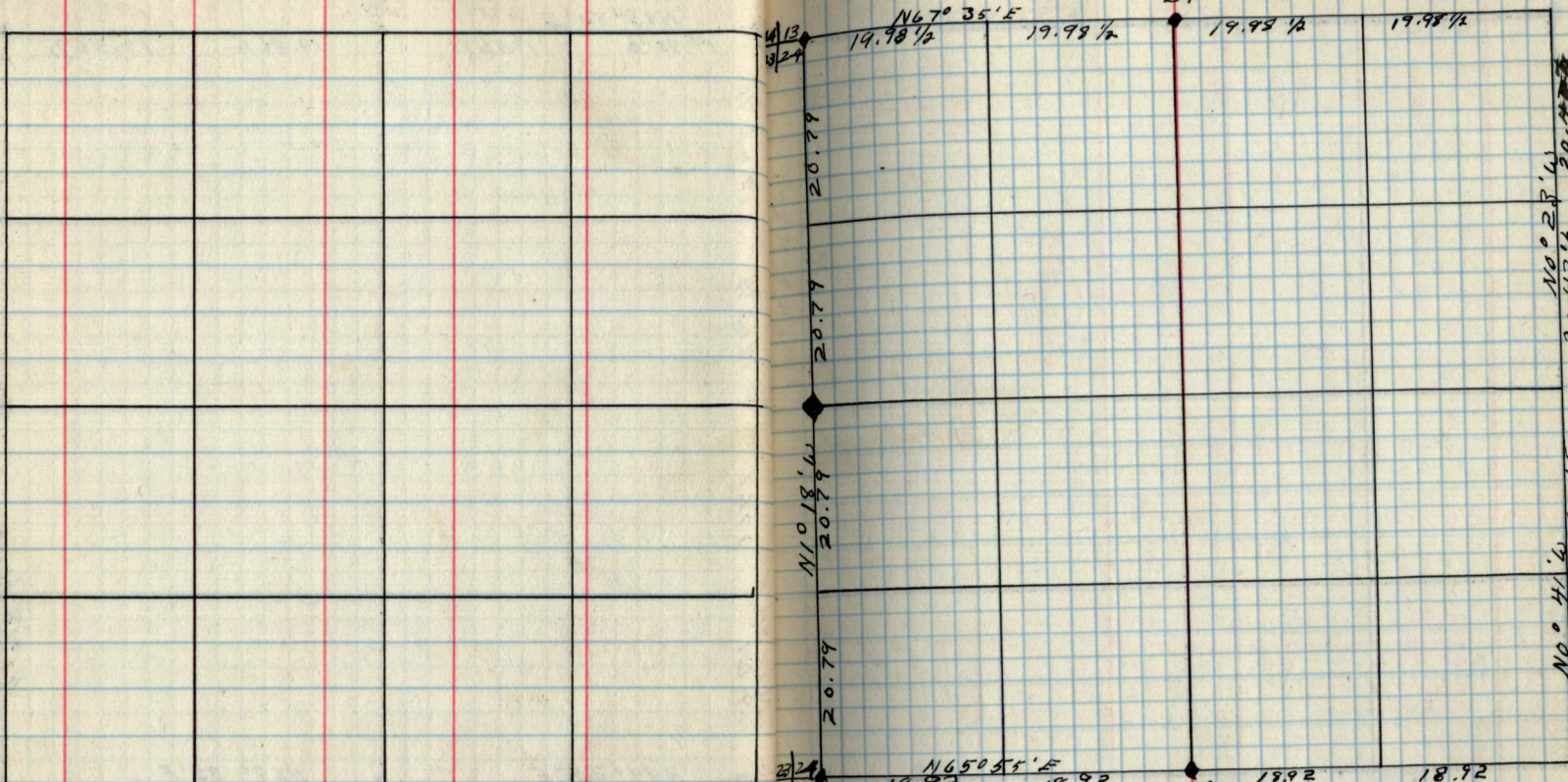
Sec. Cor.	Bearing trees				Cor.	Bearing trees			
	Species	D.B.H.	Bearing	Dist.		Species	D.B.H.	Bearing	Distance
15/14	Tamarack	4"	N 76 1/2° E	.43	15	Jack Pine	5"	N 123° E	.08
22/23	Tamarack	4"	S 25 1/4° E	.46	22	Jack Pine	6"	S 15 3/4° W	.60
16/15	Norway Pine	6"	N 29 1/2° E	.55	21/22	Norway Pine	16"	S 76 3/4° W	2.24
21/22	Norway Pine	8"	S 7° E	.21		Bur Oak	4"	S 1 1/2° E	.80
	Norway Pine	14"	S 77 3/4° W	.19	22/23	Jack Pine	5"	S 74 1/2° E	.16
	Birch	4"	N 32 1/2° W	.33		Norway Pine	16"	N 30 1/2° W	.85



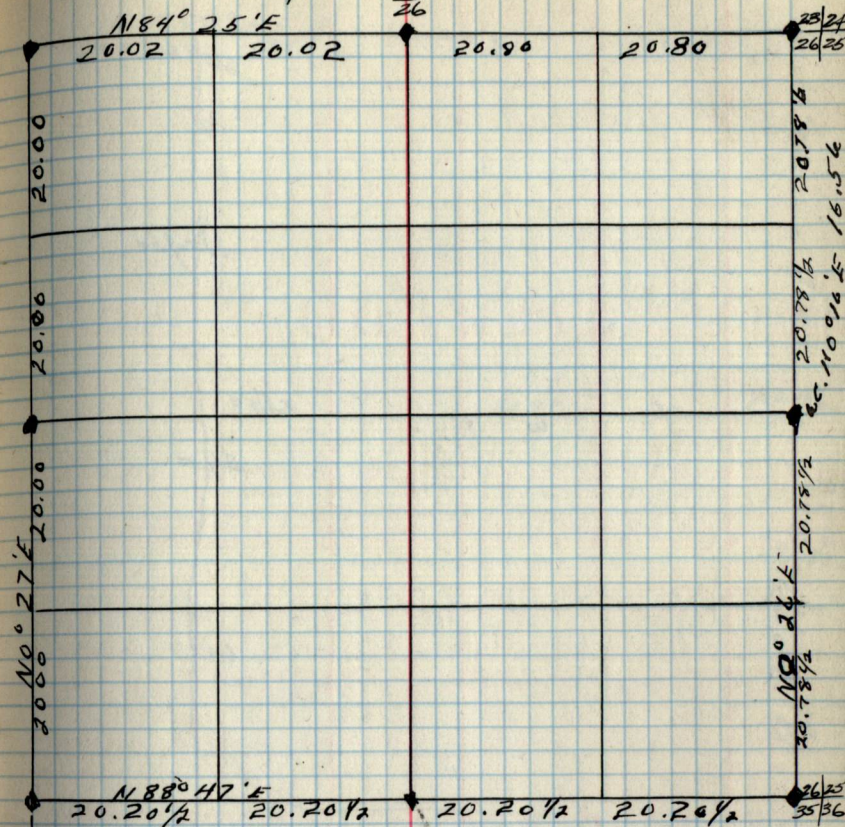
Bearing trees					Bearing trees				
Sec. Cor.	Species	D.B.H.	Bearing	Dist.	Sec. Cor.	Species	D.B.H.	Bearing	Dist.
14/12	Norway Pine	1 1/2"	N41/2°E	.67	14	Jack Pine	6"	S32 1/2°E	.29
23/24	Norway Pine	5"	S31°E	.15	13	Norway Pine	2 1/2"	N0°15'W	.79
	Jack Pine	5"	S21 1/2°W	.24	22/23	Jack Pine	5"	S74 1/2°E	.16
	Norway Pine	2 1/2"	N59 1/2°W	1.45		Norway Pine	1 1/2"	N30 1/2°W	.35
15/14	Tamarack	4"	N76 1/2°E	.42	23	Norway Pine	12"	N58 1/2°E	.89
22/23	Tamarack	4"	S125 1/4°E	.40	26	Jack Pine	8"	S25 1/2°W	1.2 1/2
23/24	Norway Pine	8"	N65°E	1.36					
26/25	Norway Pine	5"	N80°E	1.24					

Sec. 24 T147 NR27 W
By G. L. O. 13 1934
24

Page 60



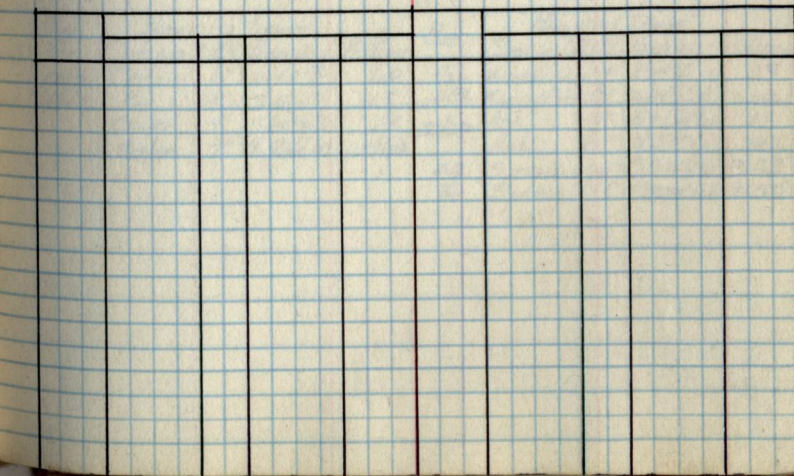
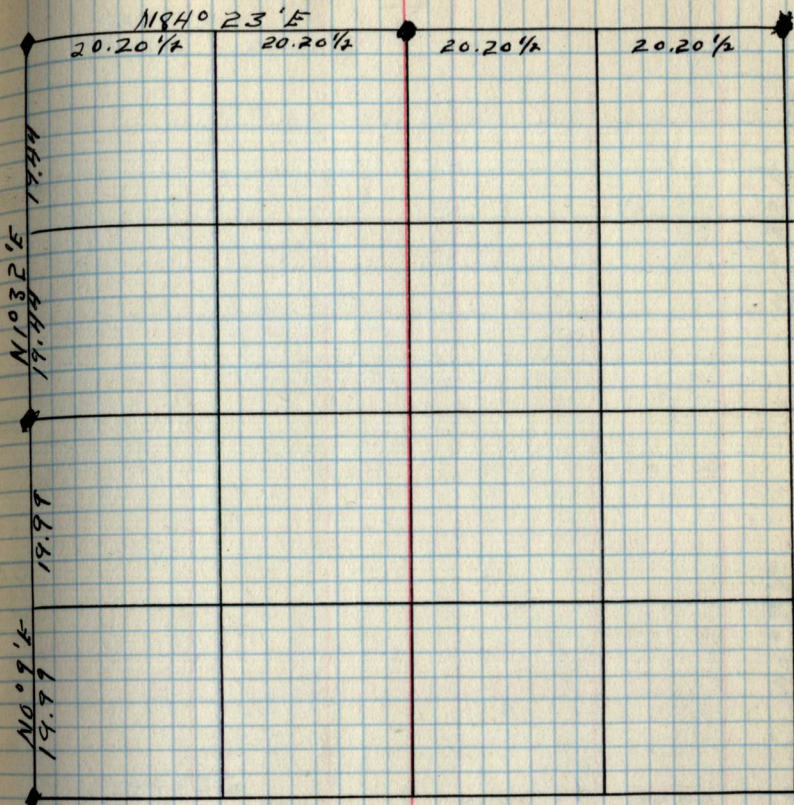
Sec. Cor.	Bearing Trees				Cor.	Bearing Trees			
	Species	D.B.H.	Bearing	Dist.		Species	D.B.H.	Bearing	Dist.
14 13	Norway Pine	17"	N4 1/2° E	.67	13	Tamarack	5"	N30 1/2° E	.50
23 24	Norway Pine	5"	S31° E	.13	24	Tamarack	5"	S34 1/2° E	.62
	Jack Pine	5"	S21 1/2° W	.24	24	Norway Pine	5"	N39 1/2° W	.23
	Norway Pine	26"	N83 1/2° W	1.45	25	Norway Pine	5"	S41 1/2° E	.40
23 24	Norway Pine	8"	N65° E	1.36					
26 25	Norway Pine	5"	N180° E	1.24					



Sec. Cor.	Bearing trees				Cor.	Bearing trees			
	Species	D.B.H.	Bearing	Distance		Species	D.B.H.	Bearing	Distance
23/24	Norway Pine	8"	N65° E	1.36	23	Norway Pine	12"	N55 1/2° E	.89
26/25	Norway Pine	5"	N80° E	1.24	26	Jack Pine	8"	S25 1/2° W	.12 1/2
26/25 35/36	Old								

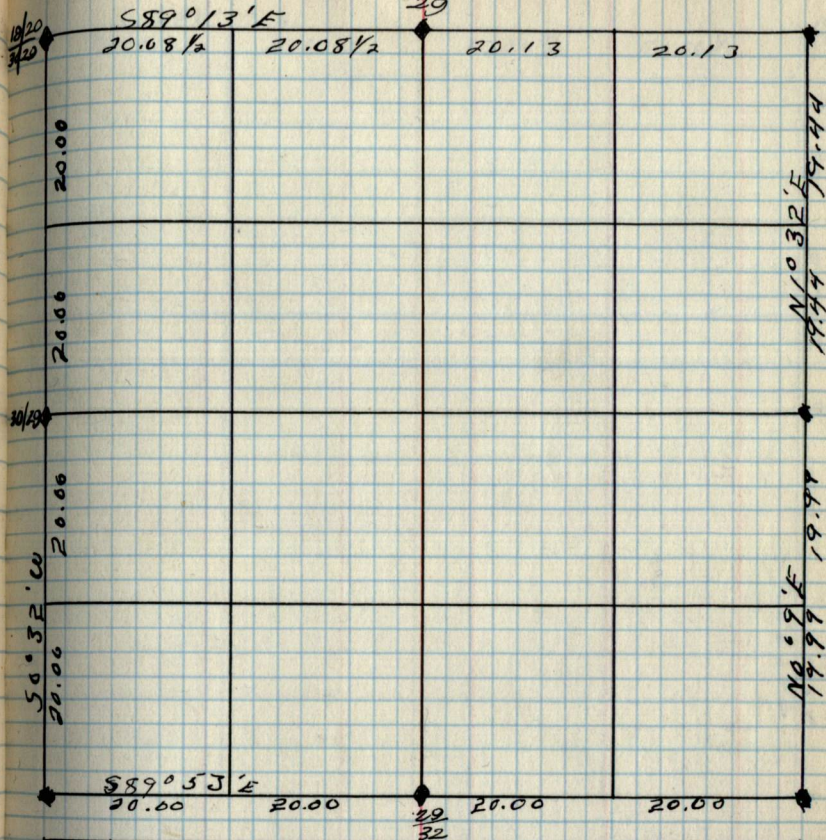
Sec. 28 T 147 N 27 W
By G.H.O. 1936

Page 6A

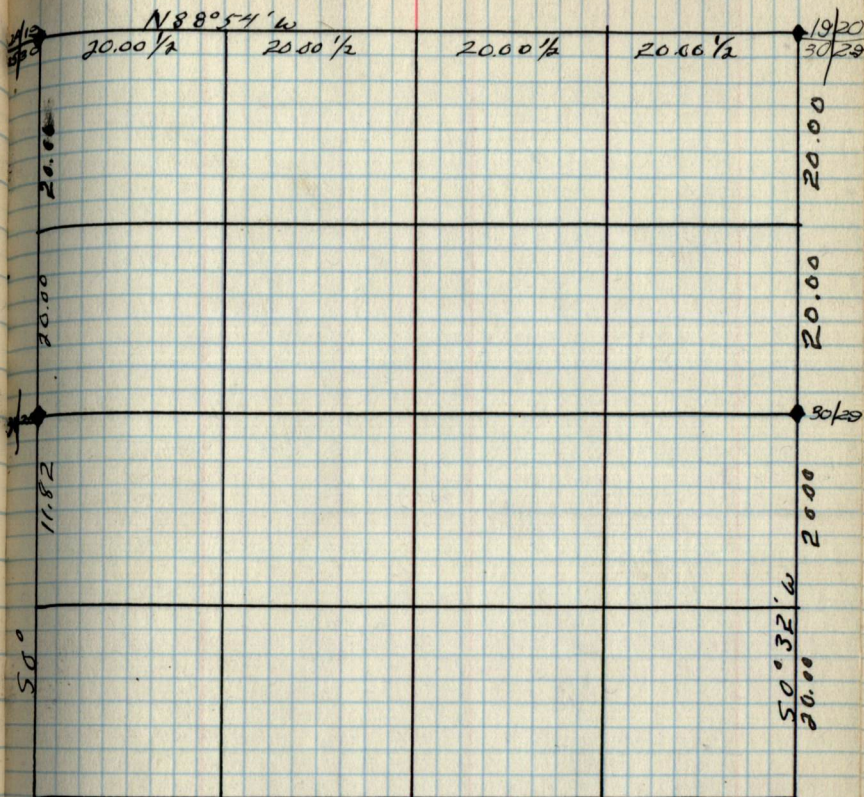


Sec. 29 T147N R27W
By G.L.O. 20 1936

Page 65



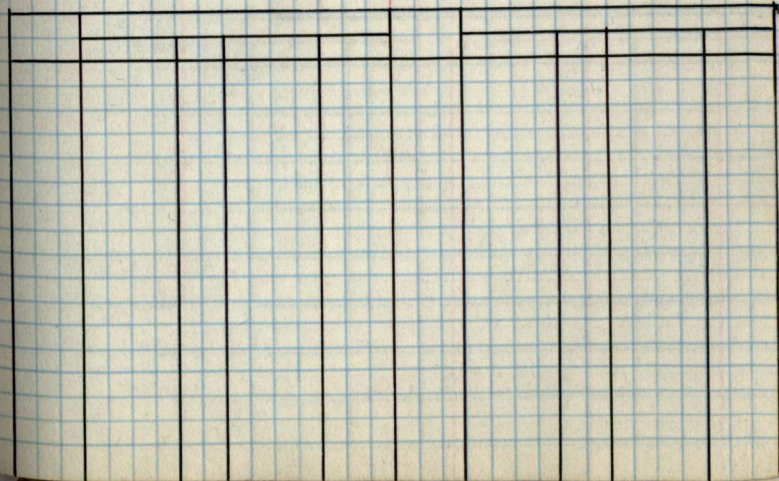
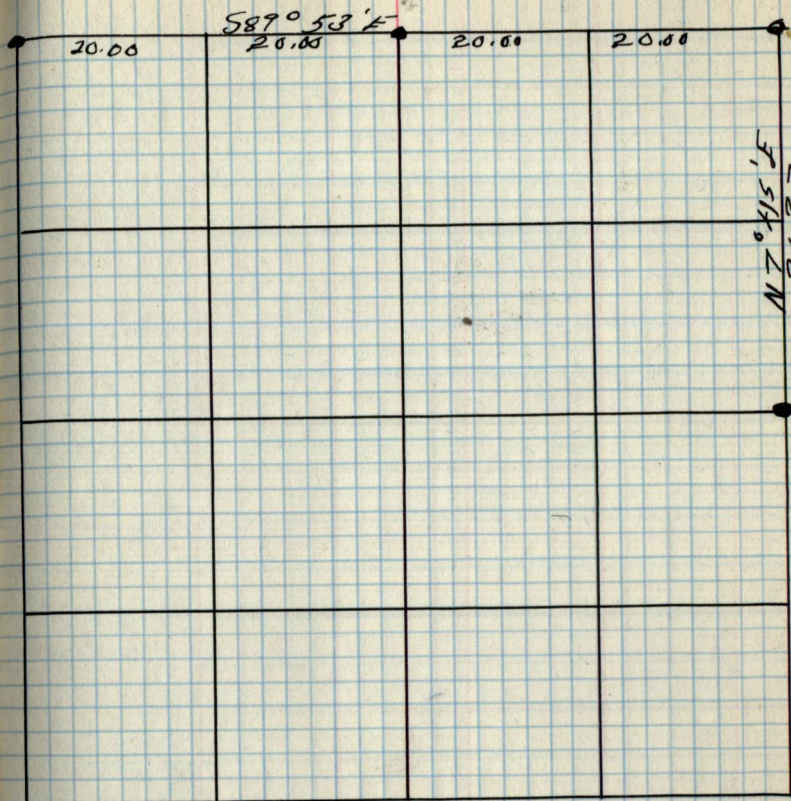
Sec. Cor.	Bearing trees				Cor.	Bearing Trees			
	Species	D.B.H.	Bearing	Distance		Species	D.B.H.	Bearing	Distance
19/20	Cedar	6"	N40°E	.69	20	Norway Pine	14"	N74°E	.09
30/29	Pop.	14"	S5 1/2°E	.13	29	Norway Pine	8"	S44 1/2°W	.16
	Cedar	5"	S60 3/4°W	.25	30/29	Ash	7"	N7 1/4°W	.11
	Cedar	7"	N30 1/4°W	.46 1/2		Ash	10"	N53°E	.30
					29	Spruce	12"	S89 1/2°W	9.02
					32	Spruce	11"	S89°W	9.55



Sec. Cor.	Bearing Trees				Cor.	Bearing Trees			
	Species	D.B.H.	Bearing	Dist.		Species	D.B.H.	Bearing	Dist.
19/20	Cedar	6"	N 40° E	.69	30/25	W. Oak	7"	S 57 1/2° E	.55
30/29	Poplar	1 1/4"	S 5 1/2° E	.13		W. Oak	6"	S 57° W	1.13
	Cedar	5"	S 60 3/4° W	.25		Ash	7"	N 7 1/4° W	.11
	Cedar	7"	N 30 1/4° W	.46 1/2	30/29	Ash	10"	N 53° E	.30
24/19	Tamarack	4"	N 63 1/2° E	.12					
25/30	Cedar	5"	S 54 1/2° E	.33					
	Tamarack	5"	S 11° W	.21					
	Cedar	4"	N 75° W	.01 1/2					

Sec. 32 T14N R27W

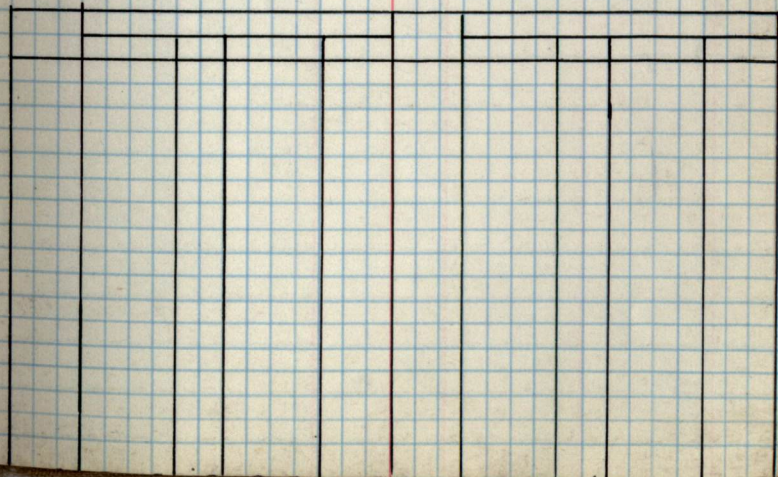
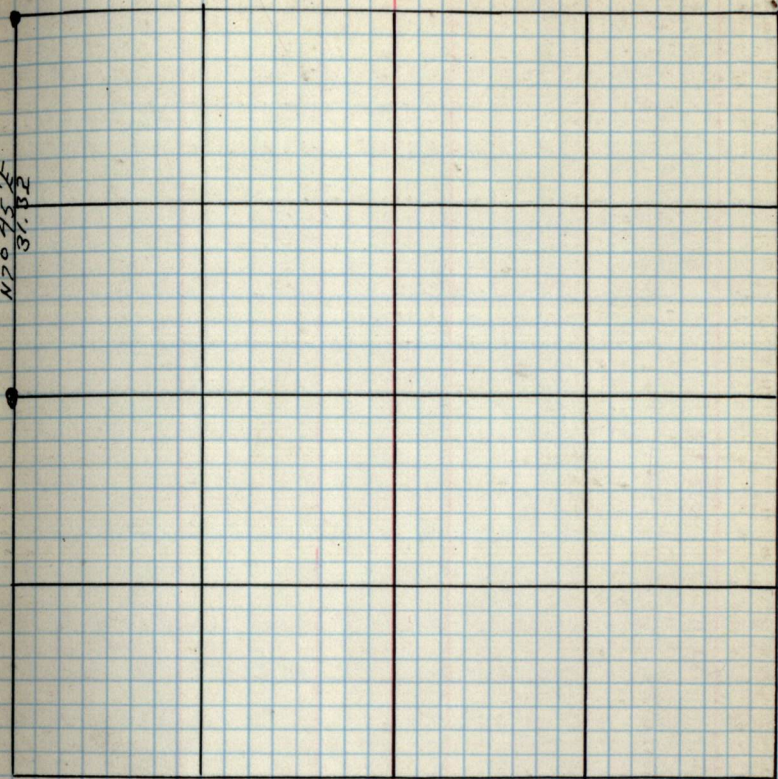
68



Sec. 33 T147N R27W
By Haberle

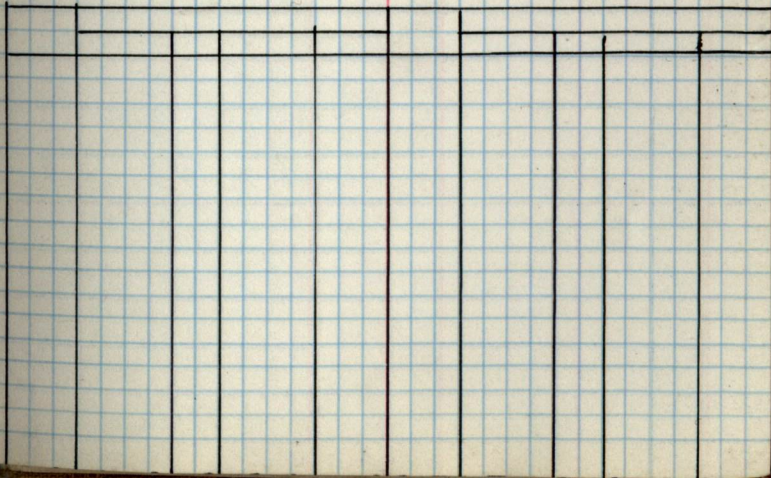
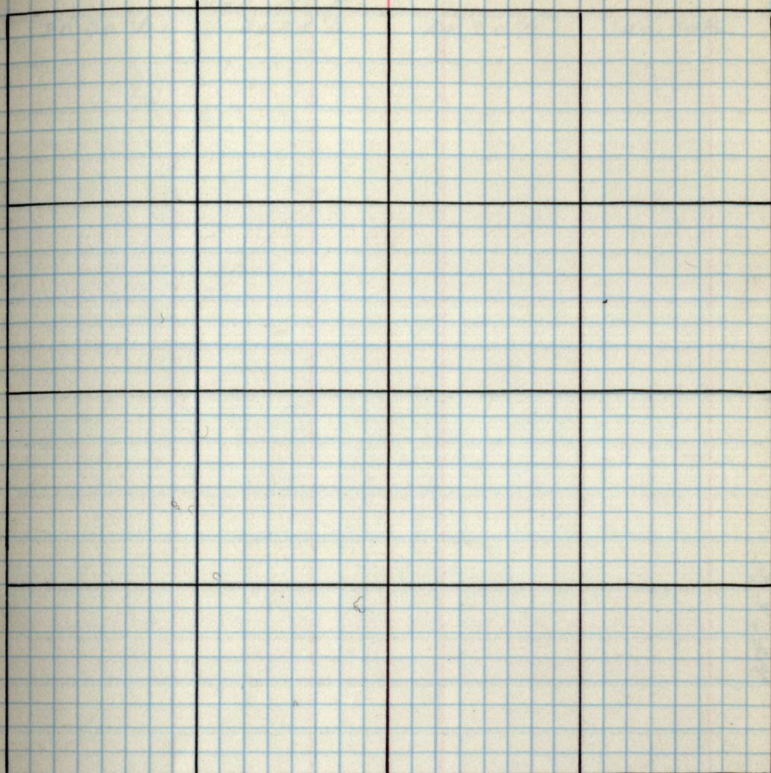
69

N 20 75 1/2
37.82



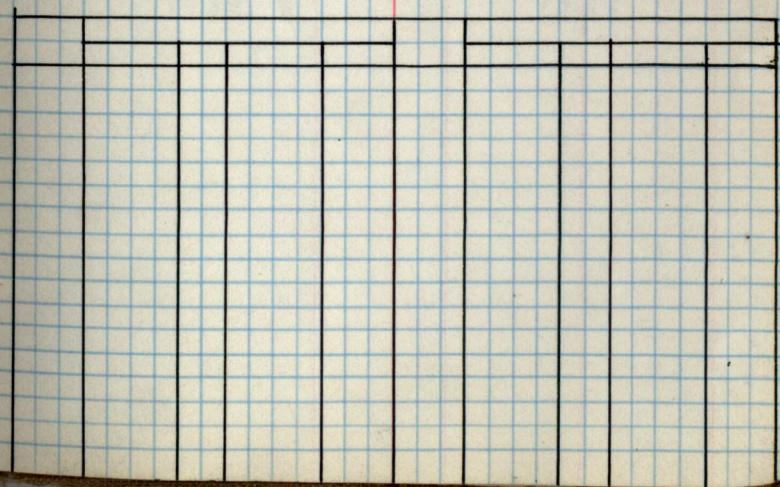
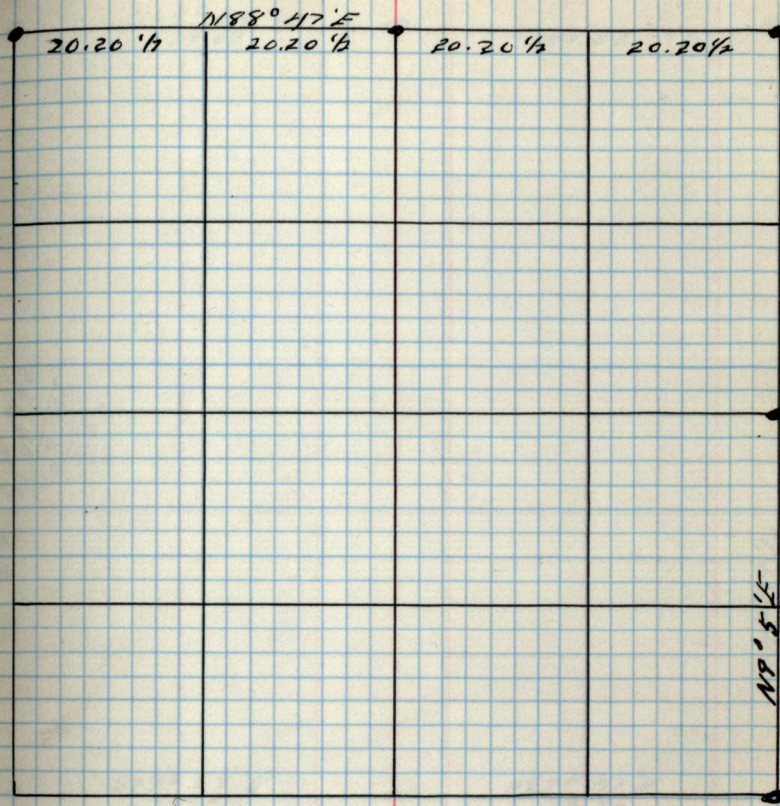
Sec. 34 T147N R27W

70



Sec. 35 T147N R27W

71



Pages 073-End
are blank