

FIELD COPY

T147N R26W

DIKON  
D-1000

---

MINING

TRANSIT BOOK

No. 422F

---

ccc

32



# EUGENE DIETZGEN CO.

DRAWING MATERIALS, MATHEMATICAL and SURVEYING INSTRUMENTS  
Chicago New York San Francisco New Orleans Pittsburg Toronto

DISTANCES FROM CENTER OF ROADWAY FOR CROSS-SECTIONING.  
Roadway 16 feet wide. Side Slopes 1 on 1.  
For Single Track Embankment.

H	0	.1	.2	.3	.4	.5	.6	.7	.8	.9	H
0	8.0	8.1	8.2	8.3	8.4	8.5	8.6	8.7	8.8	8.9	0
1	9.0	9.1	9.2	9.3	9.4	9.5	9.6	9.7	9.8	9.9	1
2	10.0	10.1	10.2	10.3	10.4	10.5	10.6	10.7	10.8	10.9	2
3	11.0	11.1	11.2	11.3	11.4	11.5	11.6	11.7	11.8	11.9	3
4	12.0	12.1	12.2	12.3	12.4	12.5	12.6	12.7	12.8	12.9	4
5	13.0	13.1	13.2	13.3	13.4	13.5	13.6	13.7	13.8	13.9	5
6	14.0	14.1	14.2	14.3	14.4	14.5	14.6	14.7	14.8	14.9	6
7	15.0	15.1	15.2	15.3	15.4	15.5	15.6	15.7	15.8	15.9	7
8	16.0	16.1	16.2	16.3	16.4	16.5	16.6	16.7	16.8	16.9	8
9	17.0	17.1	17.2	17.3	17.4	17.5	17.6	17.7	17.8	17.9	9
10	18.0	18.1	18.2	18.3	18.4	18.5	18.6	18.7	18.8	18.9	10
11	19.0	19.1	19.2	19.3	19.4	19.5	19.6	19.7	19.8	19.9	11
12	20.0	20.1	20.2	20.3	20.4	20.5	20.6	20.7	20.8	20.9	12
13	21.0	21.1	21.2	21.3	21.4	21.5	21.6	21.7	21.8	21.9	13
14	22.0	22.1	22.2	22.3	22.4	22.5	22.6	22.7	22.8	22.9	14
15	23.0	23.1	23.2	23.3	23.4	23.5	23.6	23.7	23.8	23.9	15
16	24.0	24.1	24.2	24.3	24.4	24.5	24.6	24.7	24.8	24.9	16
17	25.0	25.1	25.2	25.3	25.4	25.5	25.6	25.7	25.8	25.9	17
18	26.0	26.1	26.2	26.3	26.4	26.5	26.6	26.7	26.8	26.9	18
19	27.0	27.1	27.2	27.3	27.4	27.5	27.6	27.7	27.8	27.9	19
20	28.0	28.1	28.2	28.3	28.4	28.5	28.6	28.7	28.8	28.9	20
21	29.0	29.1	29.2	29.3	29.4	29.5	29.6	29.7	29.8	29.9	21
22	30.0	30.1	30.2	30.3	30.4	30.5	30.6	30.7	30.8	30.9	22
23	31.0	31.1	31.2	31.3	31.4	31.5	31.6	31.7	31.8	31.9	23
24	32.0	32.1	32.2	32.3	32.4	32.5	32.6	32.7	32.8	32.9	24
25	33.0	33.1	33.2	33.3	33.4	33.5	33.6	33.7	33.8	33.9	25
26	34.0	34.1	34.2	34.3	34.4	34.5	34.6	34.7	34.8	34.9	26
27	35.0	35.1	35.2	35.3	35.4	35.5	35.6	35.7	35.8	35.9	27
28	36.0	36.1	36.2	36.3	36.4	36.5	36.6	36.7	36.8	36.9	28
29	37.0	37.1	37.2	37.3	37.4	37.5	37.6	37.7	37.8	37.9	29
30	38.0	38.1	38.2	38.3	38.4	38.5	38.6	38.7	38.8	38.9	30
31	39.0	39.1	39.2	39.3	39.4	39.5	39.6	39.7	39.8	39.9	31
32	40.0	40.1	40.2	40.3	40.4	40.5	40.6	40.7	40.8	40.9	32
33	41.0	41.1	41.2	41.3	41.4	41.5	41.6	41.7	41.8	41.9	33
34	42.0	42.1	42.2	42.3	42.4	42.5	42.6	42.7	42.8	42.9	34
35	43.0	43.1	43.2	43.3	43.4	43.5	43.6	43.7	43.8	43.9	35
36	44.0	44.1	44.2	44.3	44.4	44.5	44.6	44.7	44.8	44.9	36
37	45.0	45.1	45.2	45.3	45.4	45.5	45.6	45.7	45.8	45.9	37
38	46.0	46.1	46.2	46.3	46.4	46.5	46.6	46.7	46.8	46.9	38
39	47.0	47.1	47.2	47.3	47.4	47.5	47.6	47.7	47.8	47.9	39
40	48.0	48.1	48.2	48.3	48.4	48.5	48.6	48.7	48.8	48.9	40

Example—If point is 22.6 ft. above grade, how far should it be from center line to be a slope stake point? Ans. from Table 30.6. For same slopes but other widths of roadbed, correct above figures by one-half difference in width of roadbed; thus in example above, for 20 ft. roadbed distance will be  $30.6 + (20 - 16) \div 2$  or 2 ft. added to  $30.6 = 32.6$ . For slopes of 1 on  $1\frac{1}{2}$  see inside of back cover.

Copyright, 1914, by Eugene Dietzgen Co.

## Table of Departure Corrections

Distance	15'	30'	45'	10.00	10.15'	1.30'	1.45'	2.00
	Error	Error	Error	Error	Error	Error	Error	Error
1 chain	—	—	.013	.017	.021	.026	.030	.034
20 "	.088	.16	.26	.35	.44	.52	.61	.70
40 "	.18	.35	.52	.70	.87	1.05	1.22	1.40
60 "	.26	.52	.79	1.05	1.31	1.57	1.83	2.10
80 "	.35	.70	1.05	1.40	1.74	2.10	2.49	2.80

147-26

Scanned

9-05-2012

Ranney



T147N - R26W 5<sup>th</sup> Mer.

Original G.L.O. Survey by B.C. Baldwin

Var 100 30'

### Legend

- ◆ G.L.O. Corner Positively Identified
- ◇ Probable G.L.O. Corner
- F.S. Corner
- ⊙ County Corner
- ⊙ Corner set in original survey
- ✗ Corner in Lake

### Legend For Type Map:

- |                             |                                   |
|-----------------------------|-----------------------------------|
| 0 Grassland                 | A Aspen                           |
| 0 <sub>1</sub> Wild Pasture | B Balsam                          |
| 0 <sub>2</sub> Hay Meadow   | C Cultivated                      |
| 1 Brush                     | C <sub>1</sub> Impoverished Field |
| 1 <sub>s</sub> Swamp Brush  | M Mixed Hardwood                  |
| 2 Muskeg                    | L Maple                           |
| 3 Birch                     | K Oak                             |
| 4 Cedar                     | R Ash                             |
| 5 Jack Pine                 | W <sub>1</sub> Swamp              |
| 6 White Spruce              | 7b Non-productive - Stagnated     |
| 7 Black Spruce              | W Water                           |
| T Tamarack                  | X Seed Trees                      |
| 8 Norway Pine               |                                   |
| 9 White Pine                |                                   |

- a Reproduction - up to 6'
- b Saplings - 6' in Height to 4.5" D.b.h.
- c Poles - 4.5" D.b.h. to 9.5" D.b.h.
- Capitals - Sawtimber over 9.5" D.b.h.

- ≡ Improved Road
- ≡≡≡ Woods Road
- ~ Stream (showing direction)
- ⌋ Body of Water
- ⌋ Pronounced Ridge

All data in red taken from original Survey

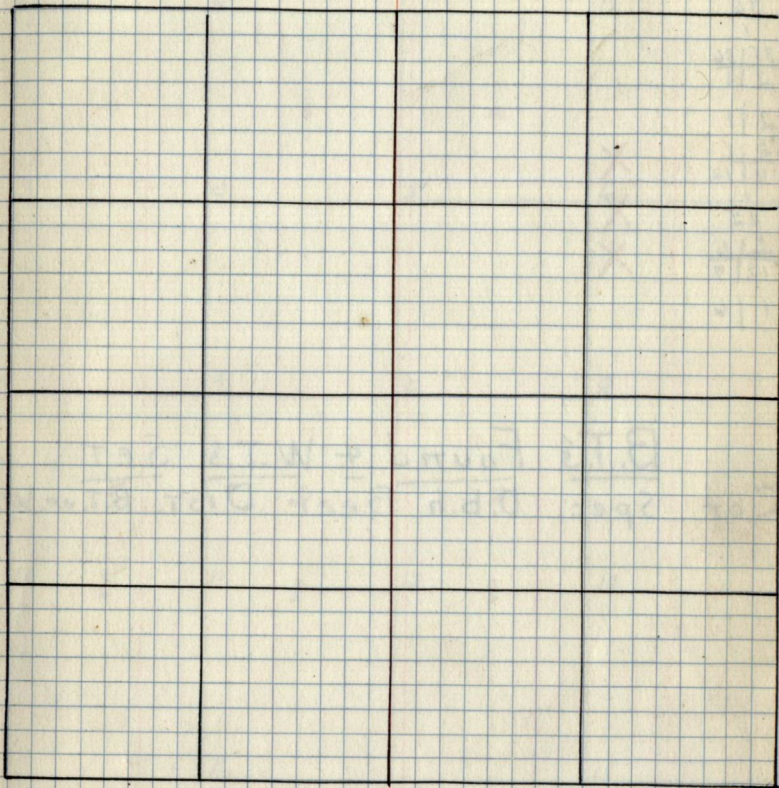


1  
Chains:

Notes

Chains

Type & Cultural Map



Remarks:



1 Original G.L.O. Corners.

Cor. Spec. D.b.h Bear DIST.

$\frac{36}{1} | \frac{31}{6}$

$\frac{36}{1}$

$\frac{35}{2} | \frac{36}{1}$

$\frac{2}{1} | 1$

$\frac{2}{11} | \frac{1}{12}$

$\frac{1}{12}$

$\frac{1}{12} | \frac{6}{7}$

$\frac{1}{12} | 6$

X

X

X

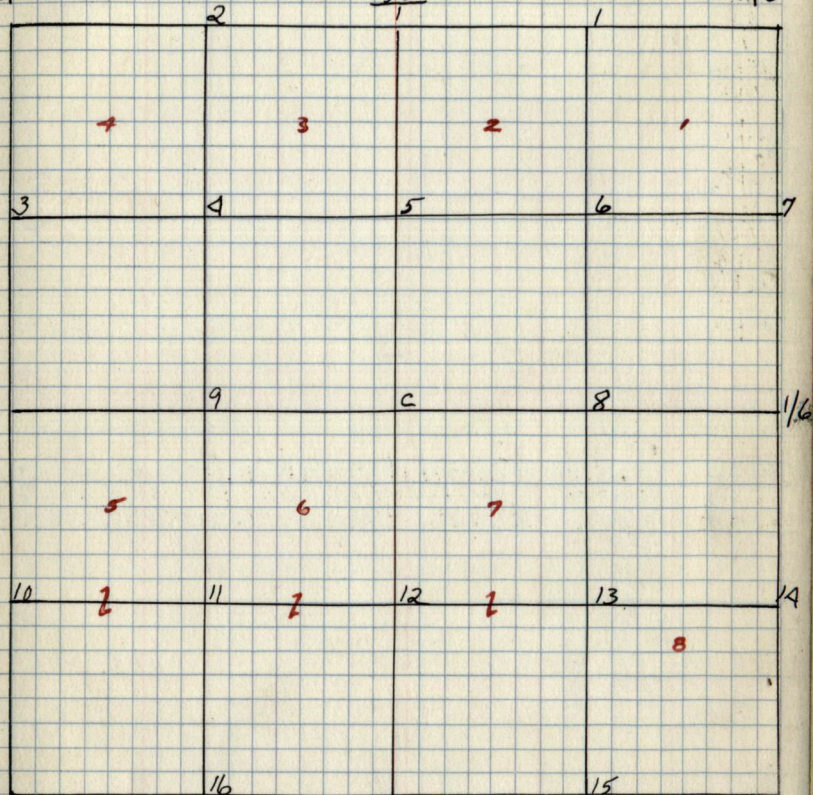
B.T.'s Found & W.T.'s Set.

Cor. Spec. D.b.h Bear DIST. B.T. OR. W.T.

Sec. 1. T147 N R26 W.  
by -

$\frac{35}{21} | \frac{36}{1}$

$\frac{34}{1} | \frac{31}{6}$



$\frac{21}{11} | \frac{12}{7}$

$\frac{16}{12} | \frac{7}{1}$

B.T.'s & W.T.'s (CONT.)

Cor. Spec. D.b.h. Bear. DIST. B.T. OR. W.T.

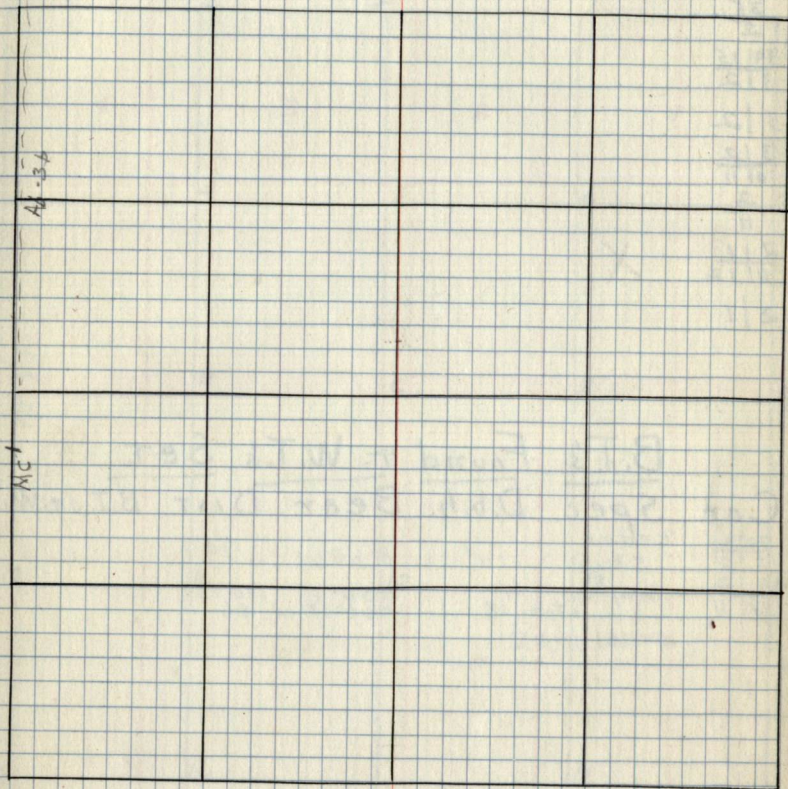


S. 2  
Chains

Notes

Chains,

Type & Cultural Map 2



Remarks:



Sec. 2 T147N. R. 26W.  
by

2

2  
Original G.L.O. CORNERS.  
Cor. Spec. D.b.h. Bear DIST.

$\frac{35}{2} | \frac{36}{1}$   
 $\frac{35}{2}$

$\frac{34}{3} | \frac{35}{2}$

3 | 2

$\frac{3}{3} | \frac{2}{11}$

$\frac{2}{11}$

$\frac{2}{11} | \frac{1}{12}$

2 | 1

X

B.T.'s Found & W.T.'s Set.

Cor. Spec. D.b.h. Bear DIST. B.T. OR W.T.

$\frac{34}{3} | \frac{35}{2}$   
 $\frac{3}{3} | \frac{2}{11}$   
 $\frac{3}{10} | \frac{2}{11}$

cedar

Stub 10"

N69W .79

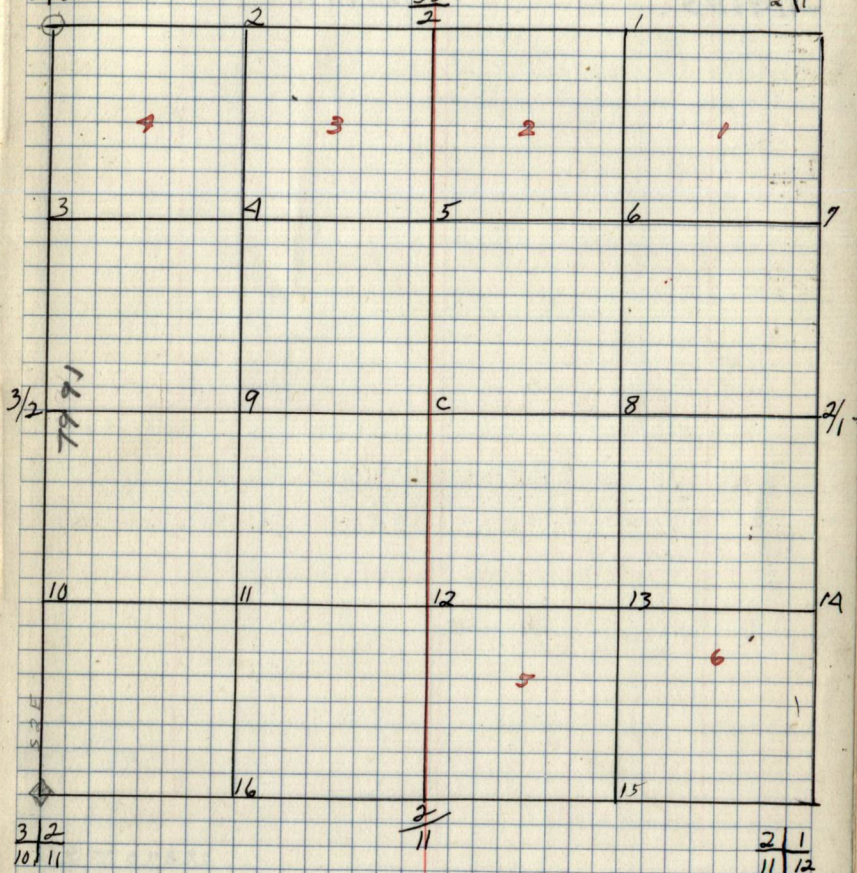
Maple 14  
" stub 18

S36°E .10 1/8  
N60°45'W .56

steel pipe

$\frac{34}{3} | \frac{35}{2}$   
 $\frac{3}{3} | \frac{2}{11}$

$\frac{35}{2} | \frac{36}{1}$   
 $\frac{35}{2}$



$\frac{3}{3} | \frac{2}{11}$   
 $\frac{3}{10} | \frac{2}{11}$

$\frac{2}{11} | \frac{1}{12}$   
 $\frac{2}{11}$

B.T.'s & W.T.'s (CONT.)  
Cor. Spec. D.b.h. Bear DIST. B.T. OR W.T.







3 Original G.L.O. Corners.

Cor. Spec. D.b.h. Bear DIST.

$\frac{39}{3} | \frac{35}{2}$

$\frac{39}{3}$  X

$\frac{33}{4} | \frac{34}{3}$

4 | 3 X

$\frac{4}{9} | \frac{3}{10}$

$\frac{3}{10}$

$\frac{3}{10} | \frac{2}{11}$

3 | 2

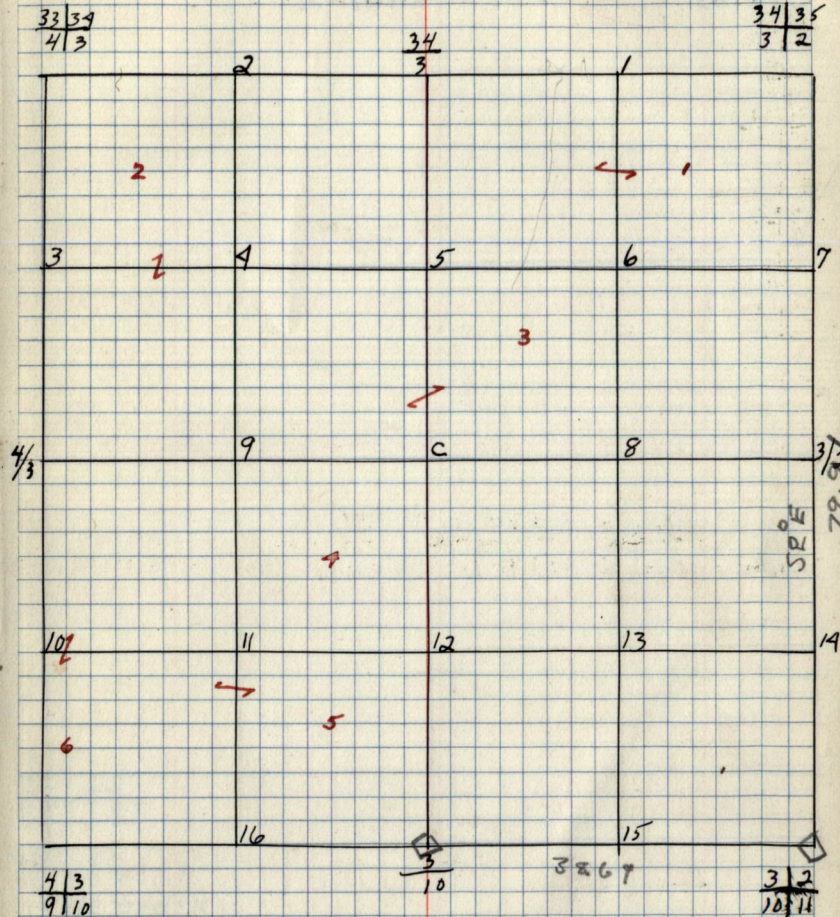
B.T.'s Found & W.T.'s Set.

Cor. Spec. D.b.h. Bear DIST. B.T. or W.T.

Sec. 3 T147N R. 26 W.

55-

3



B.T.'s & W.T.'s (CONT)

Cor. Spec. D.b.h. Bear DIST. B.T. or W.T.







4 Original G.L.O. Corners.

Cor. Spec. D.b.h. Bear. DIST.

$\frac{33}{9} \frac{34}{3}$

$\frac{33}{4}$

X

$\frac{32}{5} \frac{33}{4}$

5/4

$\frac{5}{8} \frac{4}{9}$

$\frac{4}{9}$

$\frac{4}{9} \frac{3}{10}$

4/3

X

B.T.'s Found & W.T.'s Set.

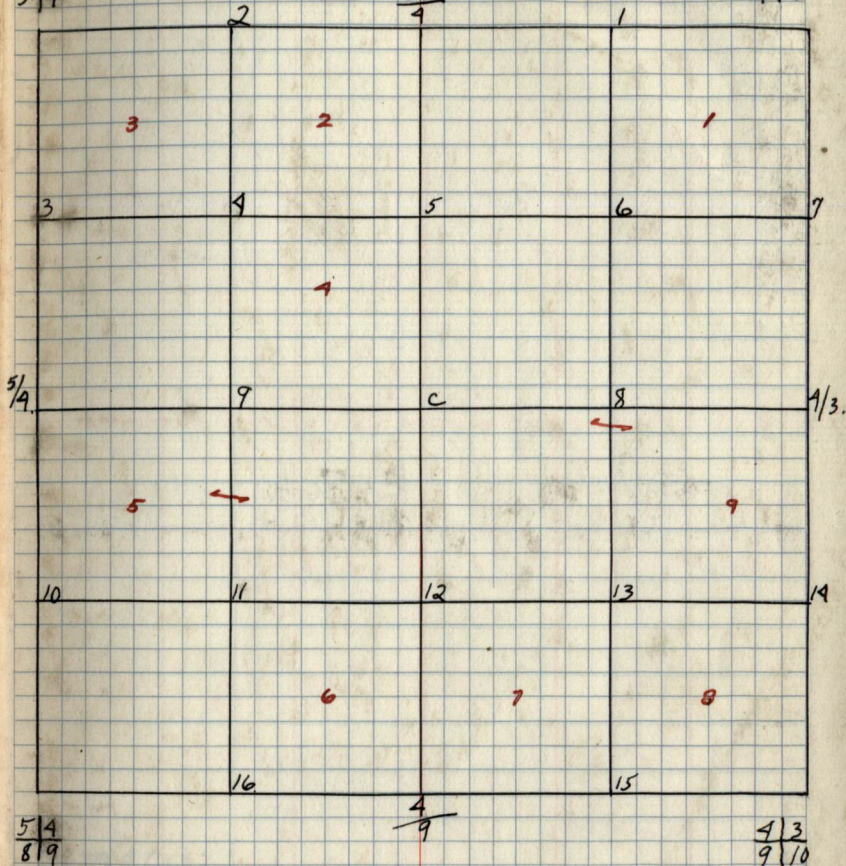
Cor. Spec. D.b.h. Bear. DIST. B.T. or W.T.

Sec. 4 T147N, R. 26W  
br-

$\frac{32}{5} \frac{33}{4}$

$\frac{33}{4}$

$\frac{33}{4} \frac{34}{3}$



$\frac{5}{8} \frac{4}{9}$

$\frac{4}{9}$

$\frac{4}{9} \frac{3}{10}$

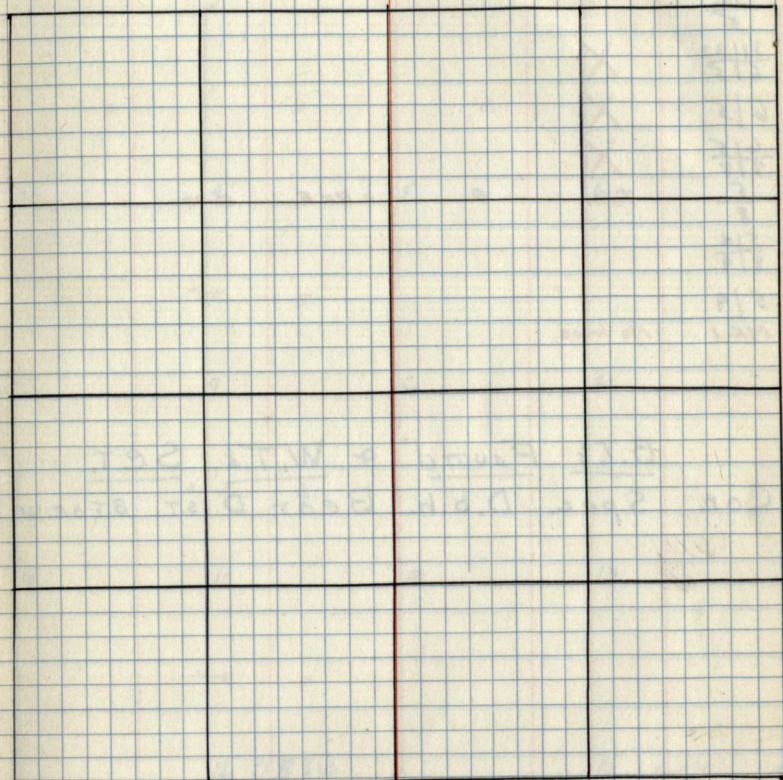
B.T.'s & W.T.'s (cont)  
Cor. Spec. D.b.h. Bear. DIST. B.T. or W.T.



Notes

Chains

Chains.

Type + Cultural Map.

Remarks:



25 Original G.L.O. Corners  
Spec. D.b.h. Bear. DIST.

Cor.  
32|33  
5|4

32  
5

31|32  
6|5

6|5

6|5  
7|8

5  
8

5|4  
8|9

5|4

M.C. 1

X

X

X

Tom 0 S 85 E 5.40

No trees

B.T.'s Found & W.T.'s Set.

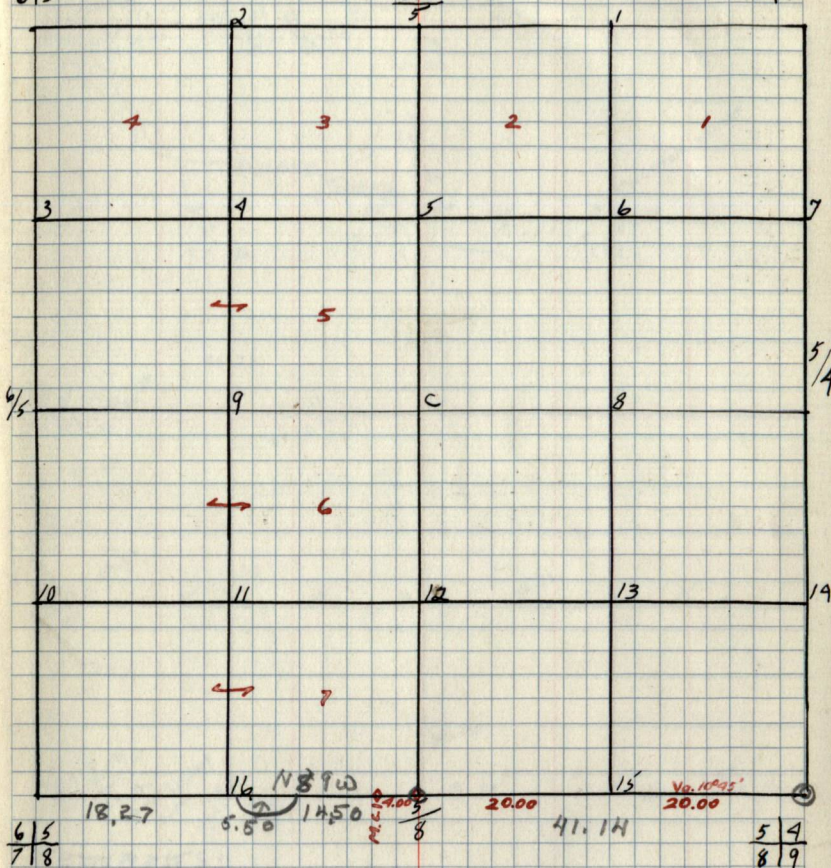
Cor. Spec. D.b.h. Bear. DIST. B.T. OR. W.T.

Sec. 5 T. 147 N. R. 26 W.  
by -

31|32  
6|5

32  
5

32|33  
5|4



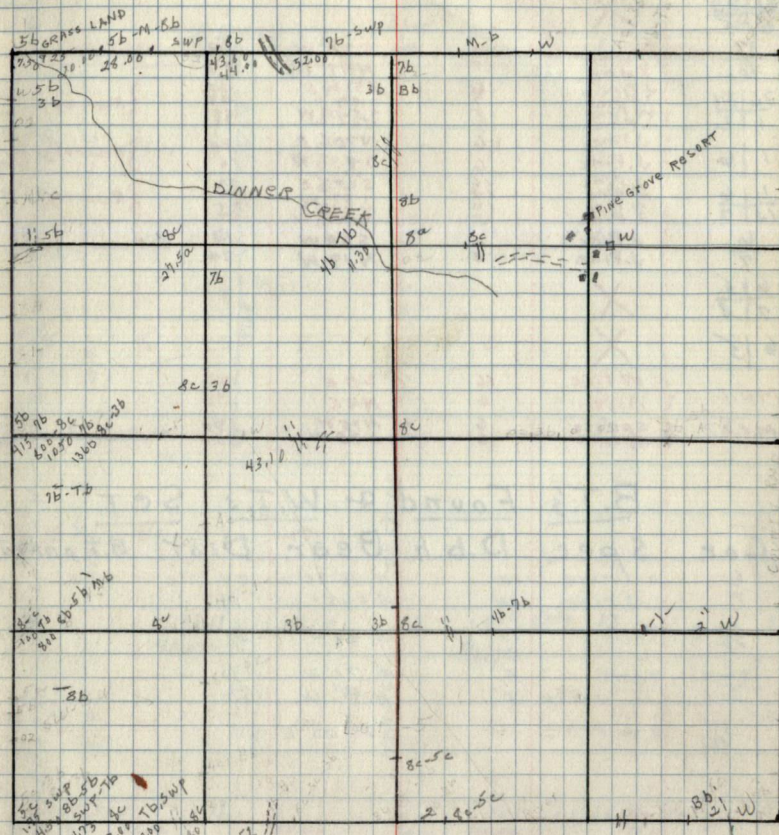
B.T.'s & W.T.'s (Cont.)

Cor. Spec. D.b.h. Bear. DIST. B.T. OR. W.T.



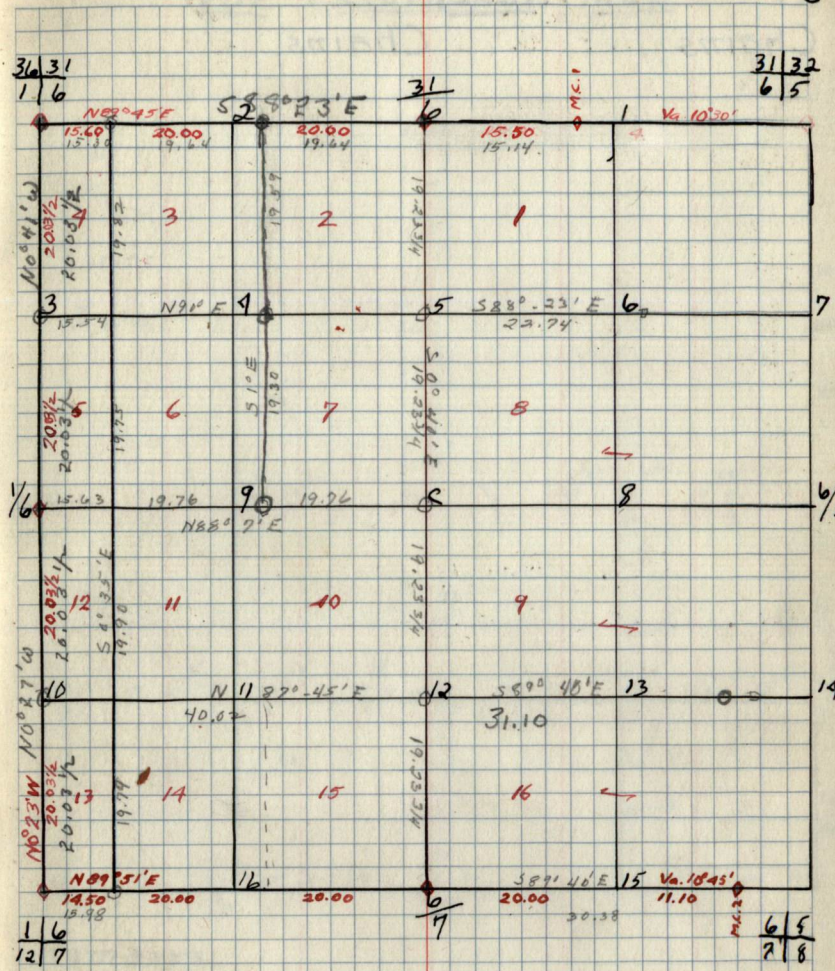
Chains.

Chains.



Remarks:





B.T.'s & W.T.'s (CONT.)  
COR. Spec. D.b.h. Bear. DIST. B.T. or W.T.

6 Original G.L.O. Corners.

Cor.	Spec.	D.b.h.	Bear.	DIST.
31/82 6/5	X			
31/6	Tam	4	S 70° W	.14
6	Tam	5	N 77° W	.40
36/31	J. Pine	5	N 51 3/4° E	.44
1/6	J. Pine	5	S 43° E	.43
	W. Pine	5	N 68 3/4° W	.33
	J. Pine	6	N 70 1/2° E	.34
1/6	J. Pine	6	S 43 3/4° W	.16
	J. Pine	16	S 75 1/2° E	.52
	J. Pine	10	S 37° W	.20
12/7	J. Pine	12	N 32 3/4° W	.29
6/7	J. Pine	5	S 59° W	.14
6/5	J. Pine	5	N 19° W	.24
6/5	X			
6/5	X			
M.C. 1	W Pine	16	S 8° E	.98
	Aspen	6	N 4° E	.33
M.C. 2	Spruce	6	N 75° W	1.30
	Spruce	6	S 70° W	1.50

B.T.'s Found & W.T.'s Set.

Cor.	Spec.	D.b.h.	Bear.	DIST.	B.T. or W.T.
7/6	D. J. PINE	12	N-16°30'W	.24	
7	J. PINE	14	S-65°W	.14	
M.C. 6/7	Tam.	14	S-66°W	.16	
36/6	Tam.	5"	S 70° W	.14	
	Fallett	5"	N 44° W	.40	
M.C. 31/6	D. W. PINE	24"	S 8° 23' E	.98	



















9

Notes

Chains

Chains.

Type & Cultural Map 9


Remarks:



Sec. 9 T147N R26W.  
by -

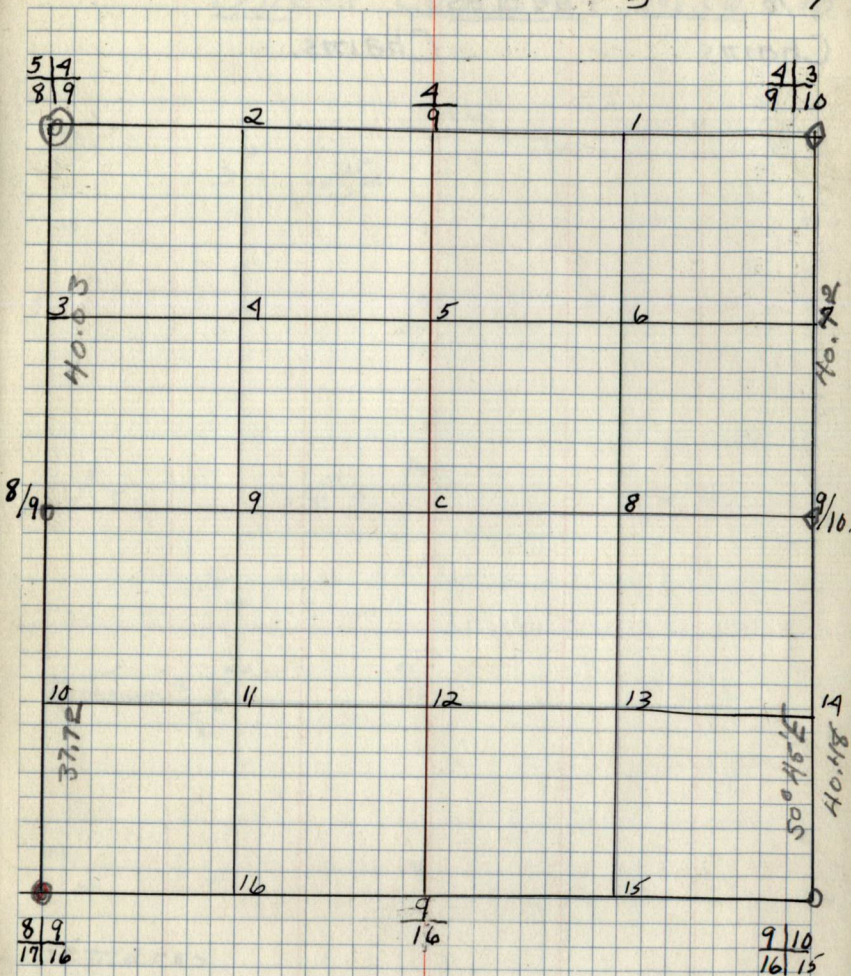
9

9 Original G.L.O. Corners  
Spec. D.b.h. Bear DIST

Cor:  
4/3  
9/10  
4/9  
5/4  
8/9  
8/9  
8/9  
17/16  
9  
9/10  
16/15  
8/10

N. Pine 24  
N. Pine 24  
W. Pine 24  
N. 55° W 23  
N. 17° E 23  
S. 65° E 23  
S. 56° E 23

B.T.'s Found and W.T.'s Set.  
Cor. Spec. D.B.h. Bear DIST.



B.T.'s & W.T.'s (CONT.)  
Cor. Spec. D.b.h. Bear DIST. B.T. OR W.T.







10 Original G.L.O. Corners.

Cor. Spec. D.b.h. Bear. DIST.

3/2  
10/11  
3  
10  
4/3  
9/10  
9/10  
9/10  
16/15  
10  
15  
10/11  
15/14  
10/11

B.T.'s Found & W.T.'s Set.

Cor. Spec. D.b.h. Bear. DIST. B.T. OR. W.T.

4/3 Road Marker N 90° E -20  
9/10  
1/6 7 Axel driven in ground  
10/11 Axel driven in ground  
Ash 12" N 2° W .63  
N.P. STUMP 12" S 87° E .37  
3/10 STUMP-P 14" S 75° W .51  
STUMP-P 12" N 75° W .63

Sec. 10 T147 N R26 W.

10



B.T.'s & W.T.'s (CONT.)  
Cor. Spec. D.b.h. Bear. DIST. B.T.'s OR. W.T.'s







11 Original G.L.O. Corners.

Cor. Spec. D.b.h. Bear. DIST.

$\frac{2}{11} | \frac{1}{12}$

X

$\frac{2}{11}$

$\frac{3}{10} | \frac{2}{11}$

$\frac{10}{16} | \frac{11}{11}$

$\frac{10}{15} | \frac{11}{19}$

$\frac{11}{14}$

X

$\frac{11}{19} | \frac{12}{13}$

X

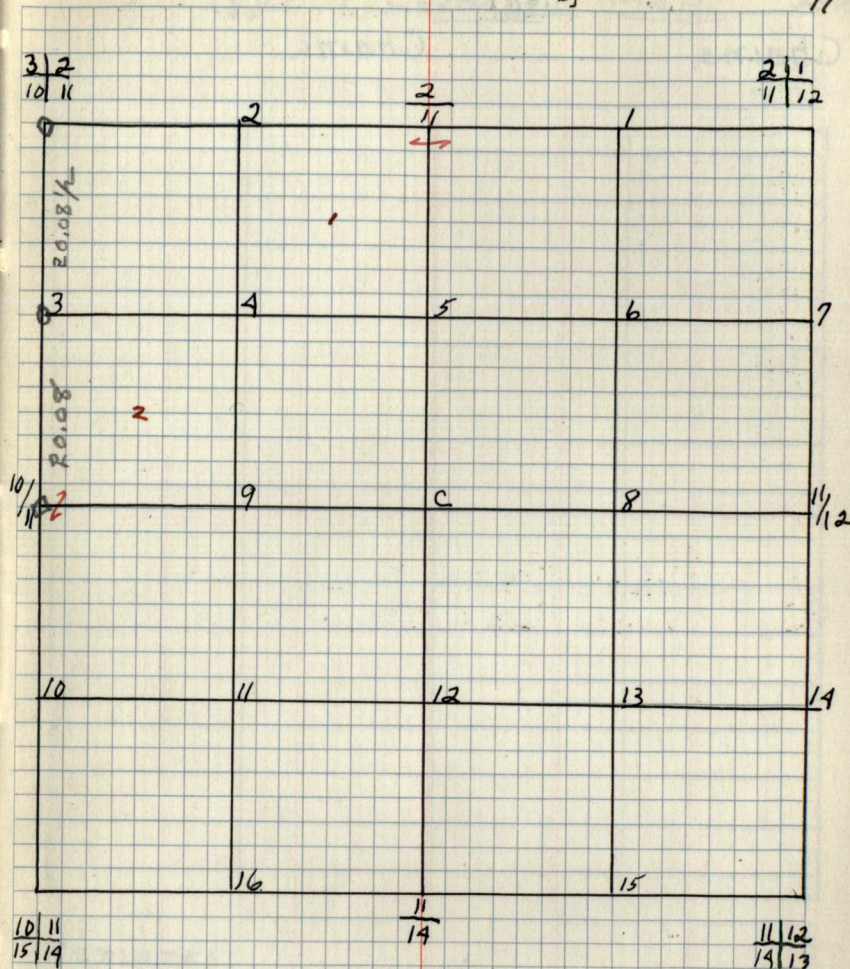
$\frac{11}{12}$

X

B.T.'s Found & W.T.'s Set.

Cor. Spec. D.b.h. Bear. DIST. B.T. OR. W.T.

Sec. 11 T147N R26W.  
by -



$\frac{10}{15} | \frac{11}{19}$

$\frac{11}{14}$

$\frac{11}{19} | \frac{12}{13}$

B.T.'s & W.T.'s (CONT)  
Cor. Spec. D.b.h. Bear. DIST. B.T. OR. W.T.







12 Original G.L.O. Corners.

Cor. Spec. D.b.h. Bear. DIST.

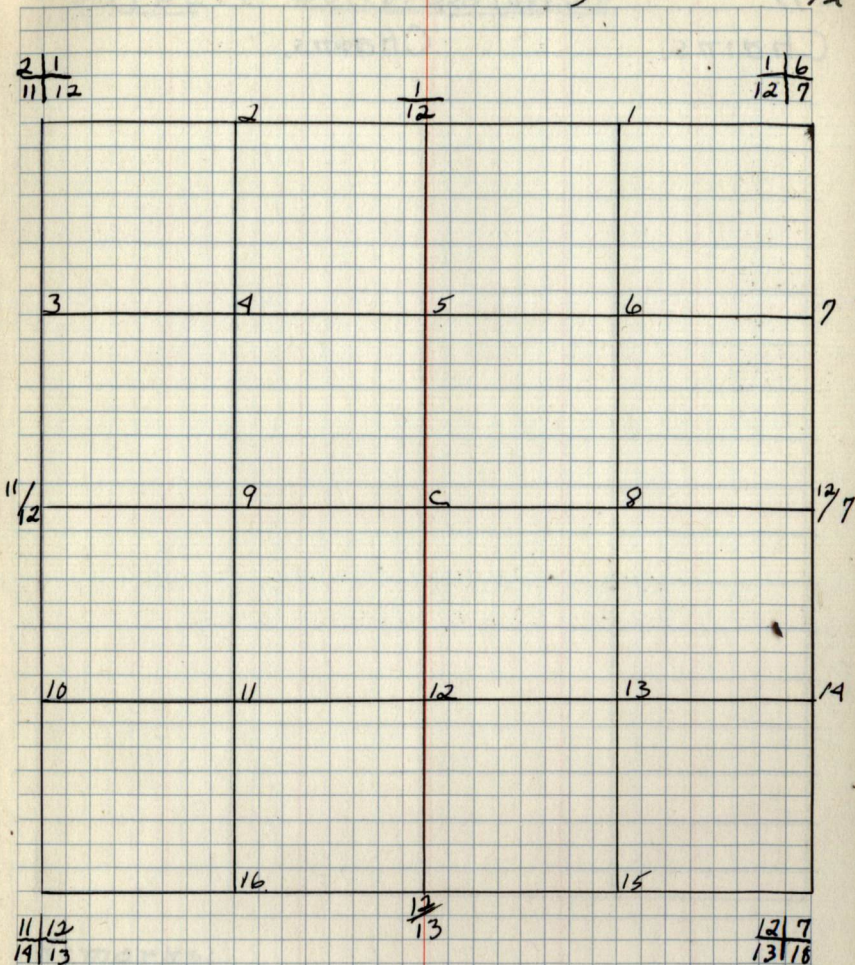
11/6 12/7	X
1/12	X
2/1 11/12	X
11/12	X
11/12 14/13	X
12/13	X
12/7 13/18	X
12/7	X

B.T.'s Found & W.T.'s Set.

Cor. Spec. D.b.h. Bear. DIST.

Sec. 12 T147N R26W  
by-

12



B.T.'s & W.T.'s (Cont.)

Cor. Spec. D.b.h. Bear. DIST. B.T. OR. W.T.



Notes.

Chains.

Chains.

Type 4 Cultural Map


Remarks:



13

Original G.L.O. Corners.

Cor. Spec. D.b.h. Bear. Dist.

$$\begin{array}{r} 12|7 \\ 13|18 \\ \hline 12 \\ 13 \end{array}$$

X

$$\begin{array}{r} 11|12 \\ 14|13 \\ \hline 11 \\ 13 \end{array}$$

X

$$\begin{array}{r} 14|13 \\ \hline 14 \\ 13 \end{array}$$

X

$$\begin{array}{r} 14|13 \\ 23|24 \\ \hline 14 \\ 24 \end{array}$$

X

$$\begin{array}{r} 13 \\ 24 \\ \hline 13 \\ 24 \end{array}$$

X

$$\begin{array}{r} 13|18 \\ 24|19 \\ \hline 13 \\ 24 \end{array}$$

X

$$\begin{array}{r} 13|18 \\ \hline 13 \\ 18 \end{array}$$

X

B.T.'s Found & W.T.'s Set.

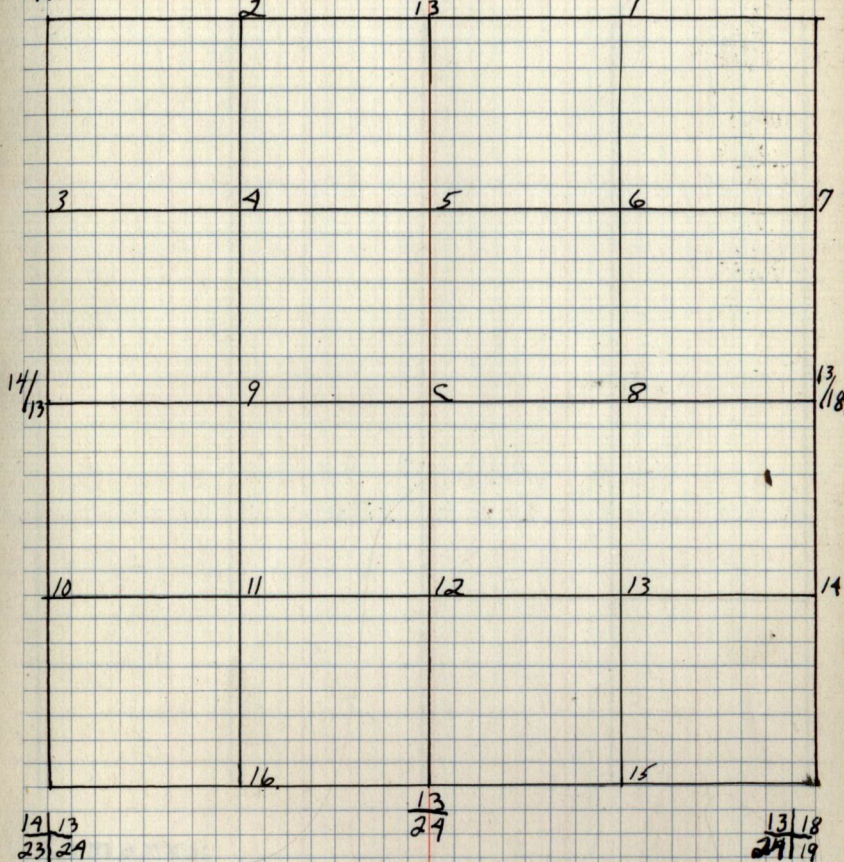
Cor. Spec. D.b.h. Bear. Dist.

Sec. 13 T147N. R26W.  
by

13

$$\begin{array}{r} 11|12 \\ 14|13 \\ \hline 11 \\ 13 \end{array}$$

$$\begin{array}{r} 12 \\ 13 \end{array}$$

$$\begin{array}{r} 12|7 \\ 13|18 \\ \hline 12 \\ 18 \end{array}$$


$$\begin{array}{r} 14|13 \\ 23|24 \\ \hline 14 \\ 24 \end{array}$$

$$\begin{array}{r} 13 \\ 24 \end{array}$$

$$\begin{array}{r} 13|18 \\ 24|19 \\ \hline 13 \\ 24 \end{array}$$
B.T.'s & W.T.'s (CONT.)

Cor. Spec. D.b.h. Bear. Dist. B.T. OR. W.T.







14 Original G.L.O. Corners,

Con. Spec. D.b.h. Bear. DIST.

$\frac{11}{14} | \frac{12}{13}$  X

$\frac{4}{14}$  X

$\frac{10}{15} | \frac{11}{14}$

15 | 14

$\frac{15}{22} | \frac{14}{23}$

$\frac{14}{23}$  X

$\frac{14}{23} | \frac{13}{24}$  X

14 | 13. X

B.T.'s Found & W.T.'s Set.

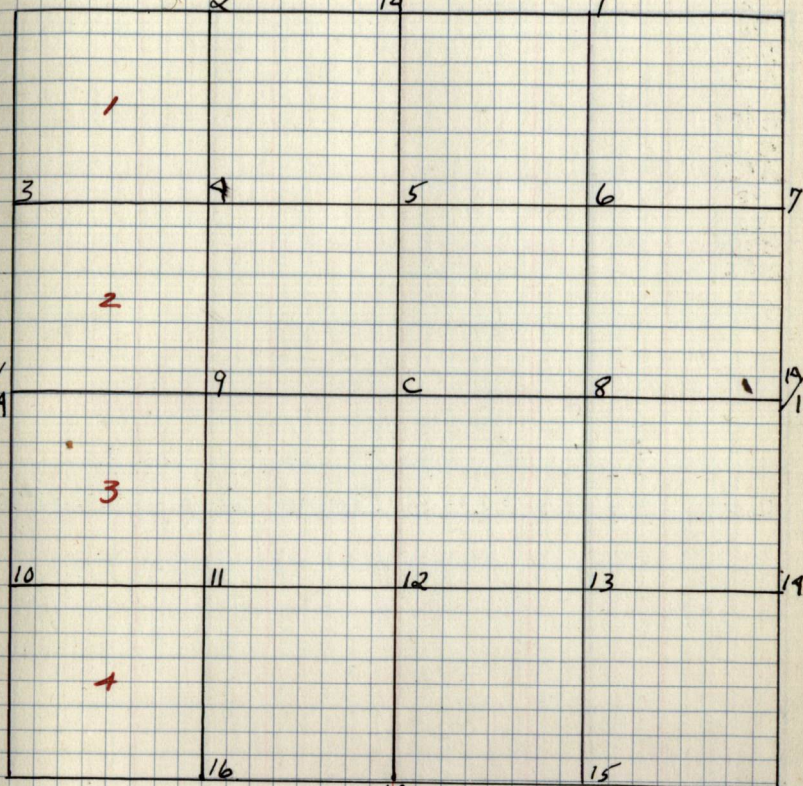
Con. Spec. D.b.h. Bear. DIST. Bear. W.T.

Sec. 14 T147N R26W.  
by -

19

$\frac{10}{15} | \frac{11}{14}$

$\frac{11}{19} | \frac{12}{13}$



$\frac{15}{22} | \frac{14}{23}$

$\frac{14}{23}$

$\frac{14}{23} | \frac{13}{24}$

B.T.'s & W.T.'s (CONT.)

Con. Spec. D.b.h. Bear. DIST. B.T.'s or W.T.'s



Notes

Chains

Chains.

Type & Cultural Map


Remarks:



15 Original G.L.O. Corners

Cor. Spec. D.b.h. Bear. DIST.

10/11  
15/19

10/15

9/10  
16/15

16/15

16/15  
21/22

X

15/22

15/19  
22/23

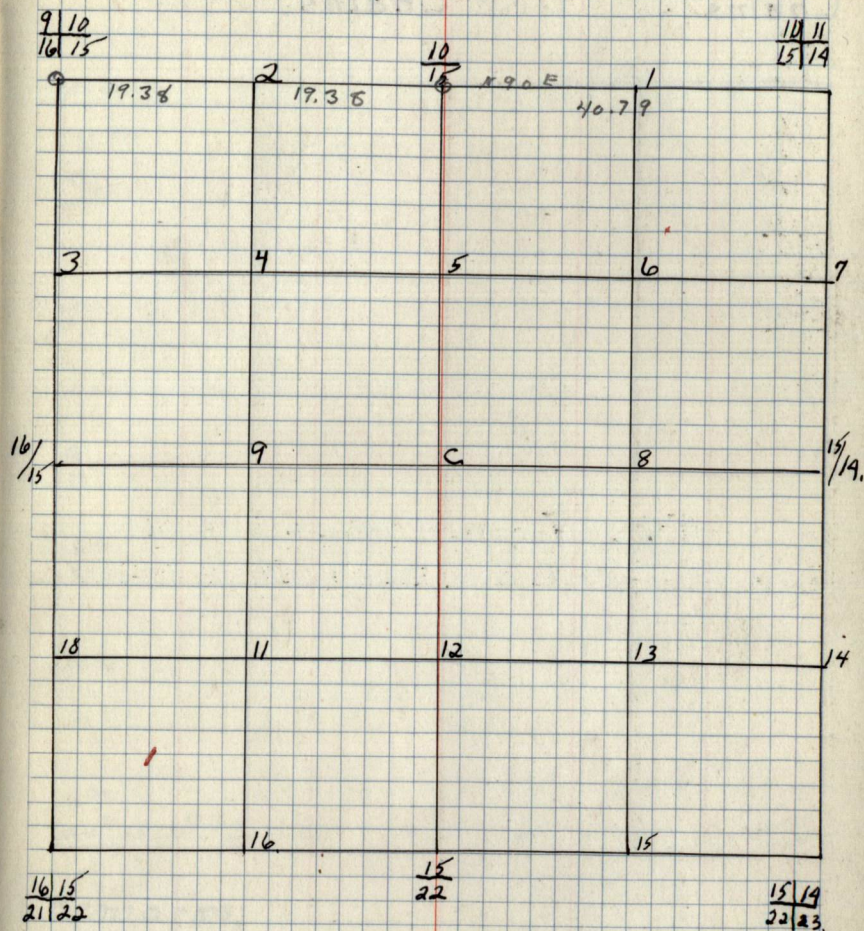
15/19

B.T.'s Found & W.T.'s Set.

Cor. Spec. D.b.h. Bear. DIST. B.T. OR. W.T.

Sec. 15 T147N/R26W  
by -

15

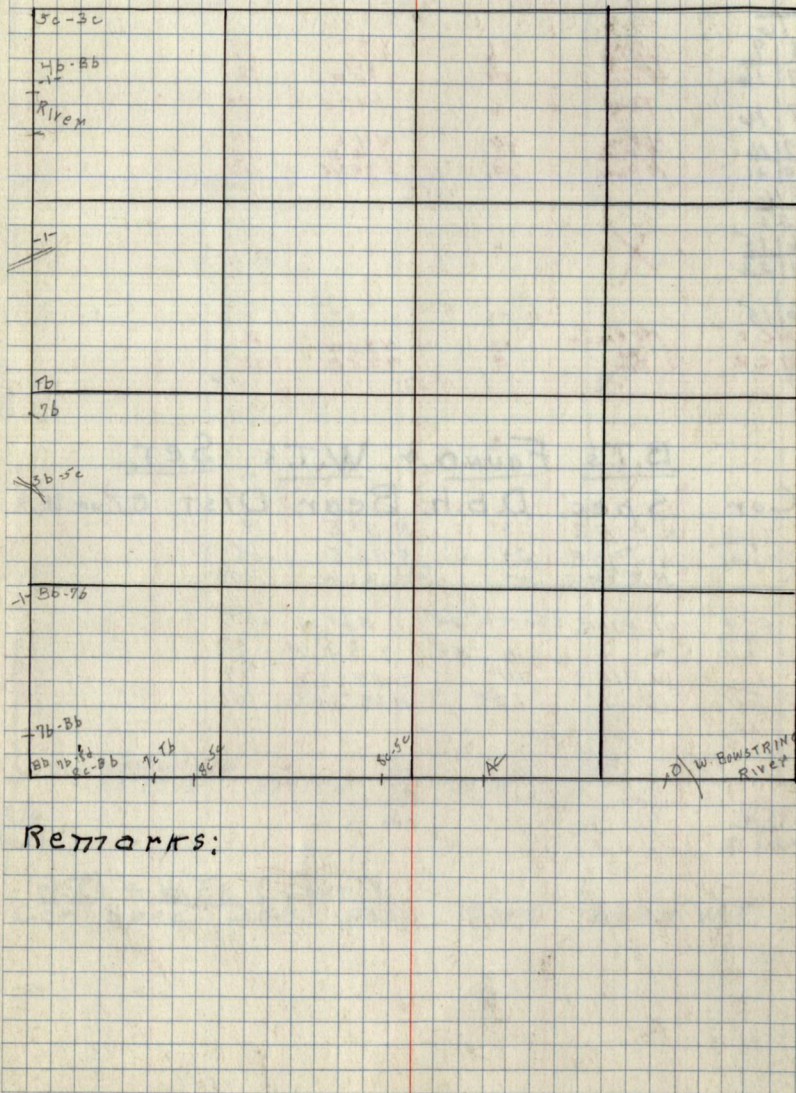


B.T.'s & W.T.'s (CONT.)  
Cor. Spec. D.b.h. Bear. DIST. B.T. OR. W.T.



Chains

Chains.



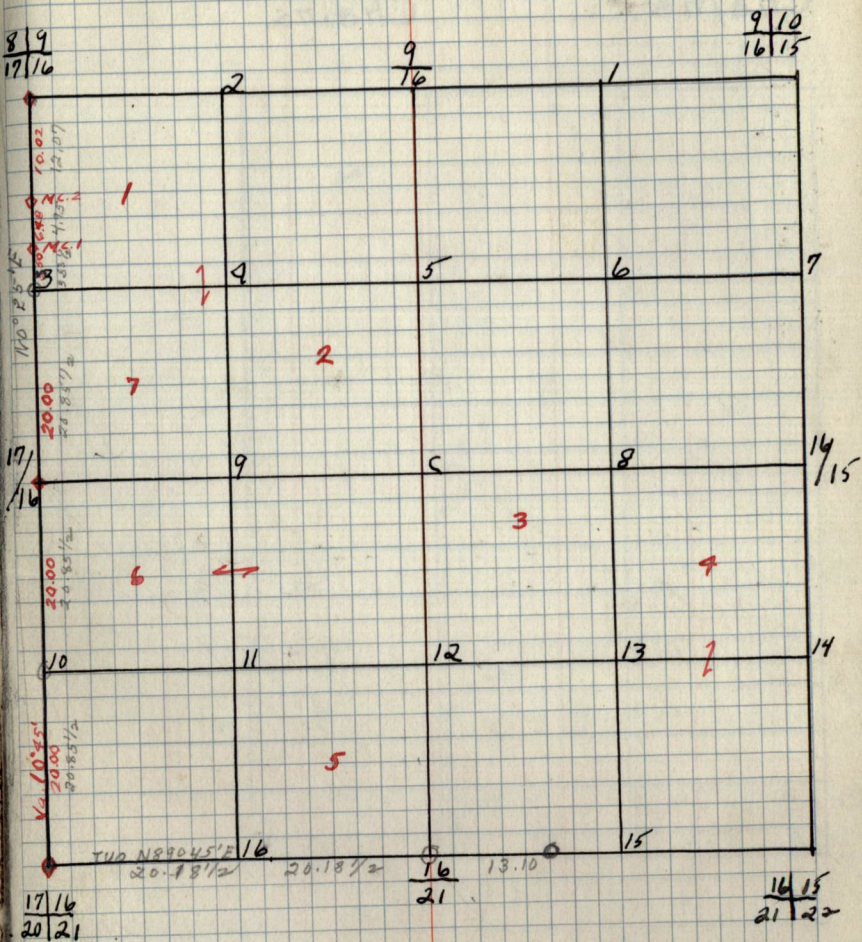


16 Original G.L.O. Corners.  
Cor. Spec. D.b.h. Bear. DIST.

8/9				
16/15				
9				
16				
8/9	N. Pine	24	N35W	.33
	N. Pine	26	N17E	.21
17/16	SPRUCE	24	S52E	.39
	N. Pine		S26W	.20
17/16	Tam	6	S46E	.25
17/16	N. Pine	20	N11E	.18
20/21	N. Pine	12	S36E	.18
	N. Pine	19	S31W	.20
16				
21				
16/15	X			
21/22				
16/15				
M.C. 1	No trees	12	N35W	.76
M.C. 2	Oak	8	N25E	1.00
	Tam			

B.T.'s FOUND + W.T.'s SET.

Cor.	Spec.	D.b.h.	Bear. DIST.	B.T. OR W.T.
17/16	N. PINE	20"	N 11° E	.18
20/21	N. PINE	24"	S 36° E	.18
	N. PINE	12	S 31° W	.20
8/9	W. PINE STUMP	24"	S 56° W	.39
17/16	N. "	24"	N. 52° W	.33
16	W. PINE	10"	S 27° E	.29
21	W. "	12"	N 33° 30' W	.61



B.T.'s + W.T.'s (CONT.)  
Cor. Spec. D.b.h. Bear. DIST. B.T. OR W.T.

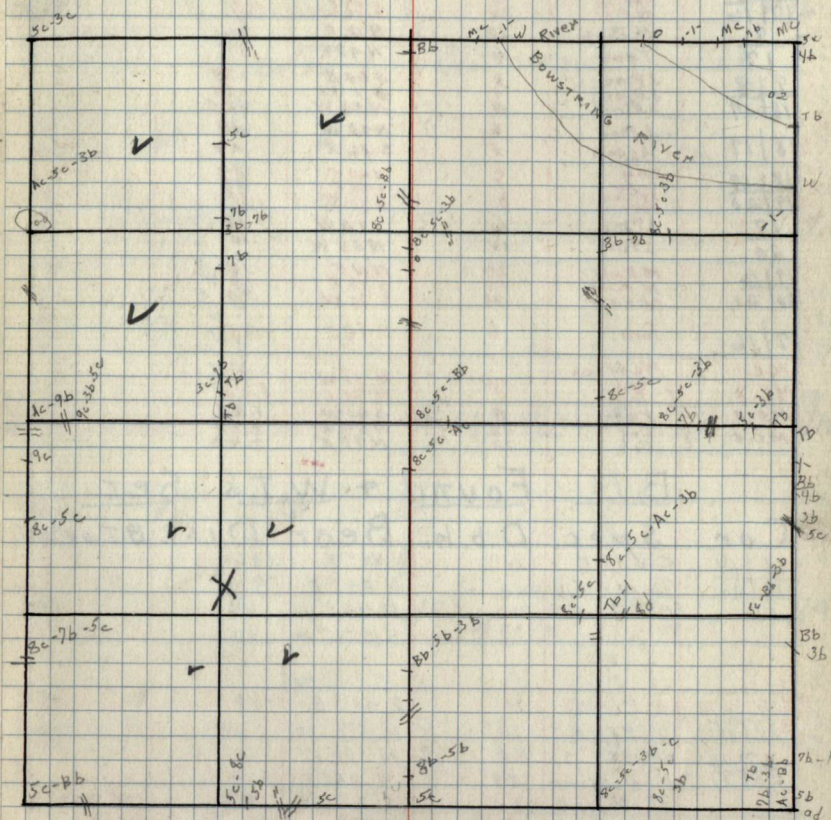


17  
Chains.

Notes.  
Chains.

Type & Cultural Map

17



Remarks:



17

## Original G.L.O. Corners.

Cor.	Spec.	D.b.h	Bear.	DIST.
8/9	J.Pine	22	N 55° W	.33
17/16	N.Pine	24	N 77° E	.50
8/17	N.Pine	12	S 36° W	.37
17/16	N.Pine	12	812 E	.33
17/16	Tam	6	N 47° E	.31
7/8	J.Pine	8	S 65° E	.70
18/17	J.Pine	8	S 1° W	.64
18/17	J.Pine	8	N 59° W	.64
18/17	J.Pine	6	N 18° W	.18
18/17	Aspen	5	S 36° E	.29
18/17	Tam	4	N 58° E	.29
19/20	cedar	8	S 48° E	.12
19/20	spruce	8	S 22° W	.17
19/20	spruce	8	N 40° W	.11
17/16	J.Pine	10	S 58° W	.10
20/21	J.Pine	10	N 35° W	.10
17/16	N.Pine	20	N 11° E	.18
20/21	N.Pine	12	S 36° E	.20
20/21	N.Pine	14	S 31° W	.20
17/16	Tam	6	S 46° E	.25
M.C.1	No trees			
M.C.2	Oak	12	N 35° W	.76
M.C.2	Tam	12	N 20° E	1.50
M.C.3	Tam	8	S 61° W	1.38
M.C.4	Oak	12	N 64° E	2.20
M.C.4	Oak	12	N 77° E	2.93

## B.T.'s Found &amp; W.T.'s Set.

Cor.	Spec.	D.b.h.	Bear.	DIST.	B.T. or W.T.
18/17	Cedar	6"	S 48° E	.12	
19/20	Tam	Stub Hole	N 58° E	.9	
19/20	spruce	"	N 40° W	.11	
19/20	"	"	S 22° W	.12	

7/8	J.PINE	10"	S 60° E	.78
18/17	J.PINE	10"	N 57° W	.64
17/16	N.PINE S	20"	N 11° E	.18
20/21	N. STUMP	24"	S 36° E	.18
20/21	N. PINE	24"	S 31° W	.20

8/9	W.PINE STUMP	24"	S 56° W	.39
17/16	N.PINE STUMP	24"	N 57° W	.33
18/17	J.PINE	10"	N 48° W	.19
18/17	ASPEN	14"	S 36° E	.33

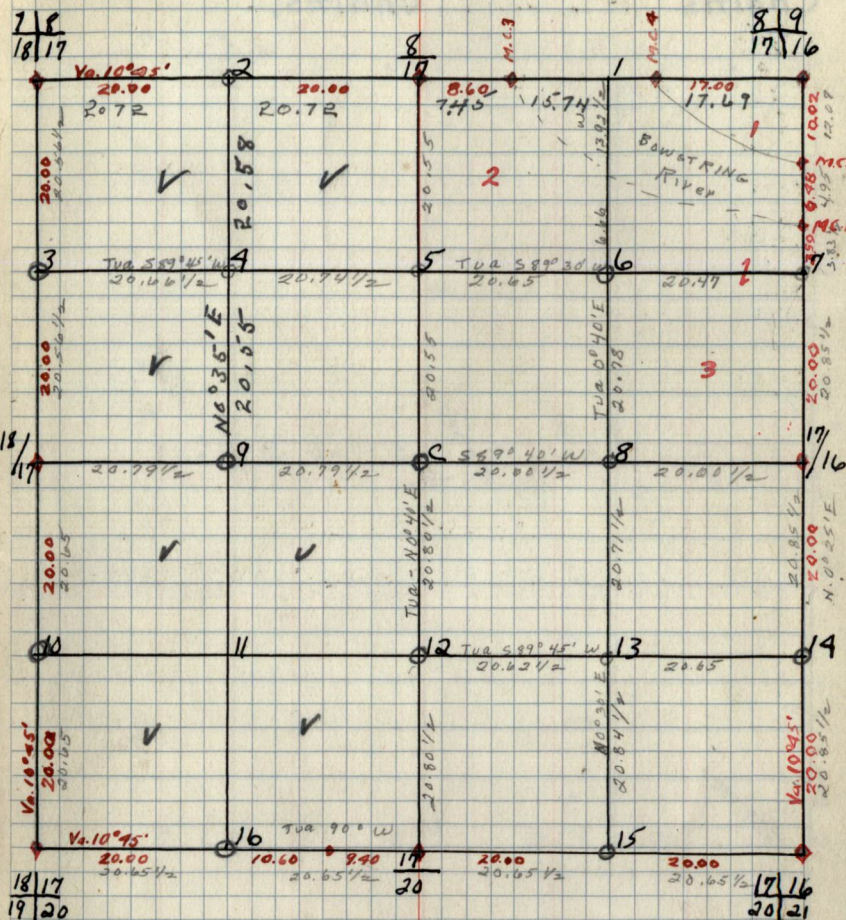
8/17	STUB N.PINE	22"	S 12° E	.33
8/17	TAM STUMP	10"	N 47° E	.31

d 1/4 Birch 6 S 84° W 20

Sec. 17 T147NR26W.

BY—

17



B.T.'s & W.T.'s (CONT.)  
Cor. Spec. D.b.h. Bear. DIST. B.T. or W.T.



18

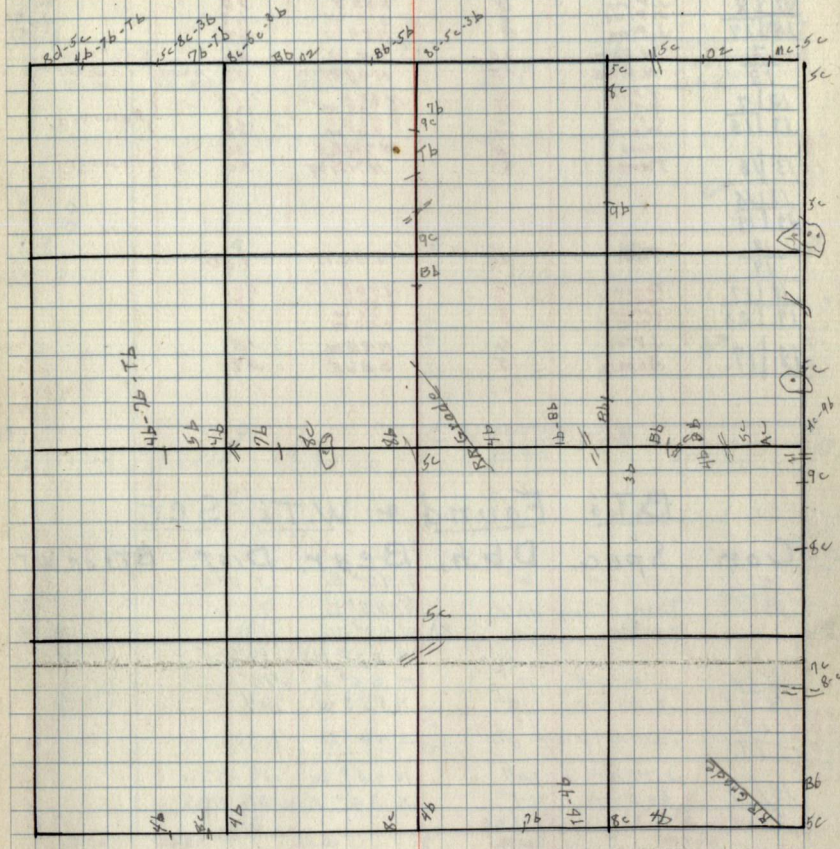
Chains

Notes

Chains.

Type & Cultural Map

18



Remarks:







## NOTES

## Chains

LINE W of 1/16 # 12

7b  
6 chs 5c  
8 chs 7b  
13 chs 5a/9c  
20 chs 1/16 # 11

LINE S of 1/16 # 1

3b 3b  
6 chs 7b  
18 chs 5b/9b  
20.06 chs 1/16 # 10

LINE S of 1/16 # 6

7b/5b  
20.65 1/16 # 8

## Chains.

LINE S of 1/16 # 11

5c/8b  
9 chs 4b/10b  
20.30 chs 1/16 # 11

LINE N of 1/16 # 9

8c/5c  
5 chs 7b  
20 chs 5b/9b  
41.32 chs 1/16 # 9

LINE W of 1/16 # 7

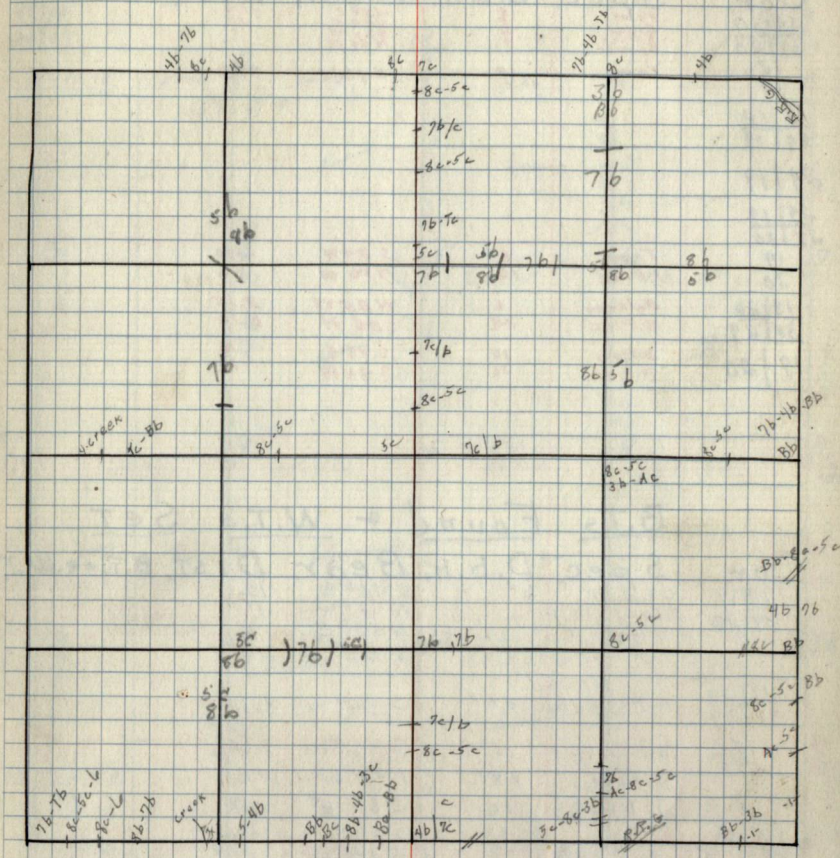
8b 5b

26 chs 7b  
30 chs 5b 8b

36 chs 7b

40.30 chs 1/16 # 5

## Type &amp; Cultural Map



REMARKS:



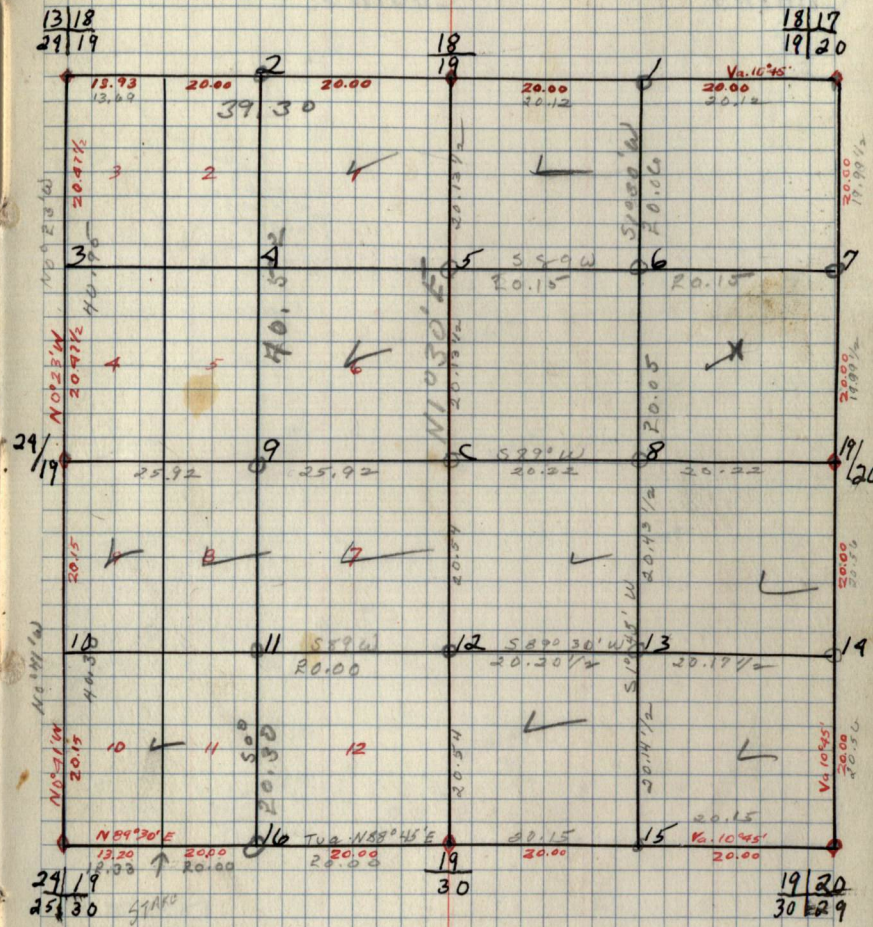
19 Original G.L.O. Corners.

Cor.	Spec.	D.b.h.	Bear.	Dist.
18/17	Tam	10	N58°E	.09
19/20	Cedar	10	N58°E	.12
18/19	Spruce	10	N30°W	.11
19/20	Tam	10	S46°W	1.00
13/18				
24/19				
29/19				
29/19				
25/30				
19/30	Tam	8	S34°W	1.40
30/30	J. Pine	10	N50°W	.86
19/20	Balsam	6	N85°W	3.75
30/29	N. Pine	14	S86°W	8.10
19/20	Balsam	10	S76°E	.18
30/29	N. Pine	26	S45°W	.12

B.T.'s Found & W.T.'s Set.

Cor.	Spec.	D.b.h.	Bear.	Dist.	B.T. or W.T.
18/17	cedar	6"	S48°E	.12	
19/20	Stamp Hole	"	N40°W	.11	
	"	"	N58°E	.9	
	"	"	S32°W	.12	
19/20	N. PINE D.	24"	S86°W	8.10	
30/29	Tam. STUMP	10"	S46°W	1.80	
18/19	N. PINE	28"	S45°W	1.12	RT + wt
19/20	J. PINE	10"	S69°E	.68	wt.
1/16 #8	J. PINE	8"	S14°W	.20	wt.
1/16 #14	J. PINE	16"	S17°E	.07	wt.
1/16 #12	SPRUCE	6"	S29°W	.15	wt.
1/16 #11	J. PINE	10"	N47°E	.20	wt.
1/16 #15	Balsam	10"	N09°E	.11	wt.
C/1/4	Spruce	5"	S88°W	.03	wt.
1/16 #9	N. PINE	10"	N18°E	.11	wt.

Sec. 19 T147N R.26W by Haberle 19



B.T.'s & W.T.'s (CONT)

Cor.	Spec.	D.b.h.	Bear.	Dist.	B.T. or W.T.
1/16 #13	N. PINE	12"	N77°E	.29	wt.
18/19	Birch	5"	S53°W	.12	wt.
	N. PINE	14"	N4°E	.57	wt.
1/16 #1	Birch	6"	S4°W	.07	wt.
1/16 #7	Balsam	4"	N05°E	.03	wt.
1/16 #6	J. PINE	6"	N46°E	.12	wt.















21 Original G.L.O. Corners

Cor. Spec. D.b.h. Bear. Dist.

16/15				
21/22	X			
16				
21				
17/16	N. Pine	20	N 11° E	.18
20/21	N. Pine	19	S 36° E	.18
	N. Pine		S 31° W	.20
20/21	N. Pine	22	N 51° E	.75
20/21	N. Pine	28	N 42° W	.05
29/28	N. Pine	20	N 74° E	.30
	N. Pine	18	S 35° E	.42
			S 45° W	.20
21				
28				
21/22				
24/27				
21/22				

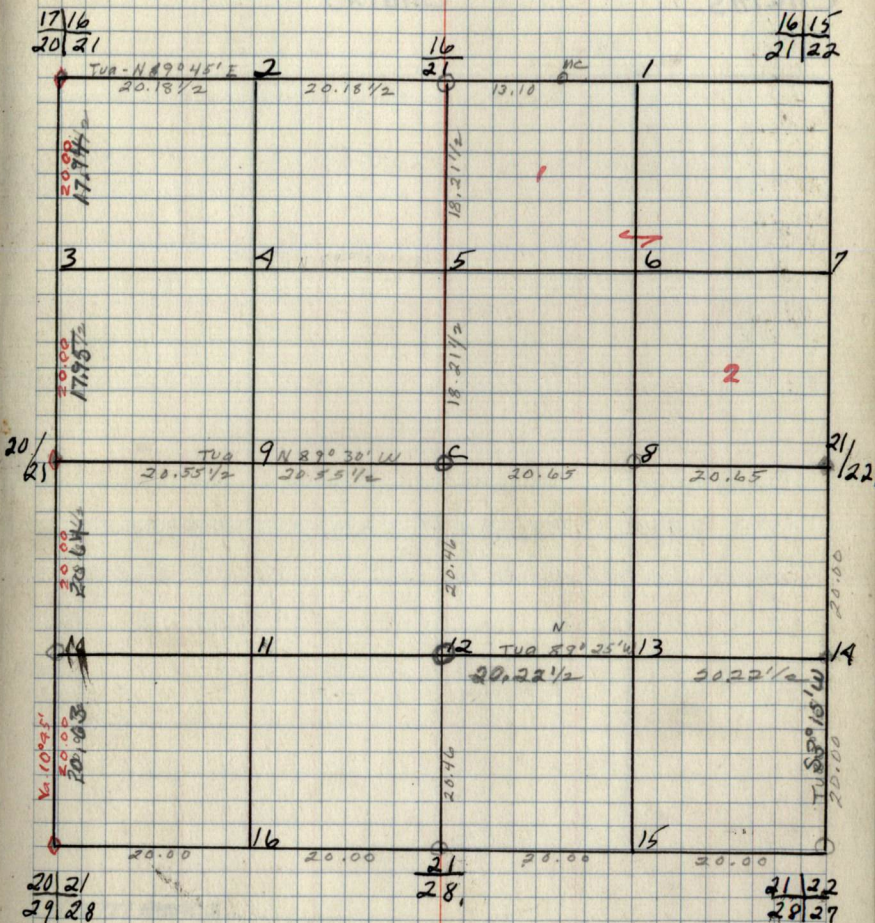
B.T.'s Found & W.T.'s SET.

Cor. Spec. D.b.h. Bear. Dist. B.T. OR. W.T.

17/16	N. PINE S.	20"	N 11° E	.18
20/21	N.P. STUMP	24"	S 36° E	.18
	N. PINE	14	S 31° W	.20
20/21	N. P. STUMP	28	N 45° W	.15
29/28	N.P. "	28	N 76° E	.30
	N.P. "	20	S 47° W	.40
	N.P. "	24	S 33° E	.42
16/21	W. PINE	10	S 87° E	.29
	N. "	12	N 23° 31' W	.61
20/21	N. PINE	24	N 51° E	.75
	Fallett			
21/22	B. 61 head	13"	N 1° E	.80
	Stump Hole		S 45° W	.131

Sec. 21 T147N R26W.

21



B.T.'s & W.T.'s (CONT.)  
Cor. Spec. D.b.h. Bear. Dist. B.T. & W.T.



22

Notes

Chains

Chains

Type & Cultural Map. 22


Remarks:



22

Original G.L.O. Corner.

Cor. Spec. D.b.h. Bear DIST.

15/19

22/23

15

22

16/15

21/22

21/22

21/22

28/27

22

27

22/23

27/26

22/23

X

X

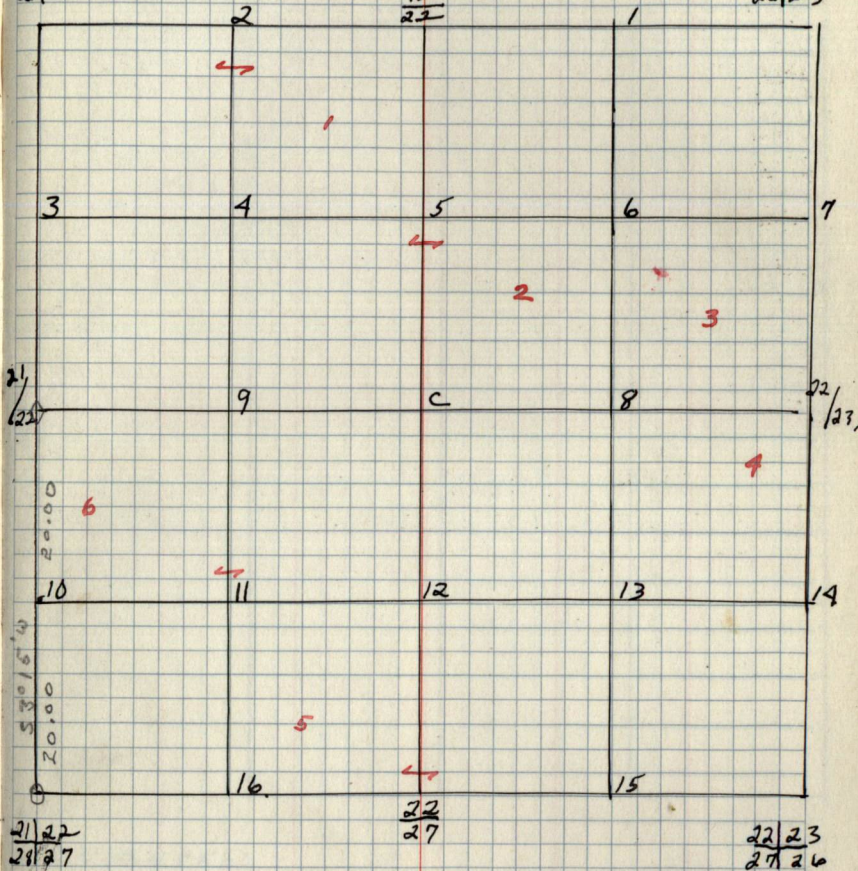
B.T.'s Found & W.T.'s Set,

Cor. Spec. D.b.h. Bear DIST. B.T. OR. W.T.

Sec. 22 T147NR 26W

55-

22

16/15  
21/2215  
2215/19  
22/23B.T.'s & W.T.'s (CONT.)

Cor. Spec. D.b.h. Bear DIST. B.T. OR. W.T.







23

Original G.L.O. Corners.

Cor. Spec. D.b.h. Bear. DIST.

14|13

X

23|29

14

X

23

15|19

22|23

22|23

22|23

X

27|26

23

X

26

23|24

X

26|25

23|24

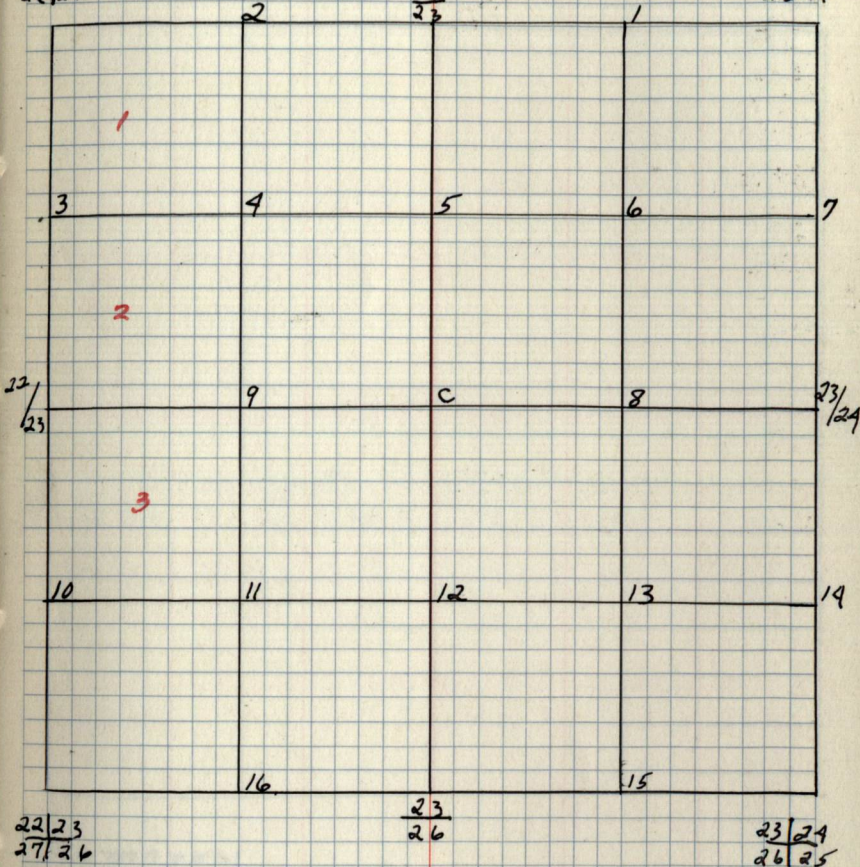
X

B.T.'s Found & W.T.'s Set.

Cor. Spec. D.b.h. Bear. DIST. B.T. OR W.T.

Sec. 23 T147 N. R26 W.

23

15|14  
22|2314  
2314|13  
23|2922|23  
27|2623  
2623|24  
26|25B.T.'s & W.T.'s (CONT.)  
Cor. Spec. D.b.h. Bear. DIST. B.T. OR W.T.



29

Notes

Chains.

Chains,

Type & Cultural Map

29


Remarks:



29

Original G.L.O. Corners.

Cor.

Spec. D.B.H. Bear. Dist.

 $\frac{13}{24}$  $\frac{13}{24}$  $\frac{13}{24}$  $\frac{14}{23}$  $\frac{23}{24}$  $\frac{23}{24}$  $\frac{26}{25}$  $\frac{24}{25}$  $\frac{24}{19}$  $\frac{25}{30}$  $\frac{24}{19}$ 

X

X

X

X

X

X

X

X

X

X

X

B.T.'s Found & W.T.'s Set.

Cor.

Spec. D.B.H. Bear. Dist. B.T. or W.T.

Sec. 24 T14 N R26 W.

29

 $\frac{14}{23}$  $\frac{23}{24}$  $\frac{13}{24}$  $\frac{13}{24}$  $\frac{13}{24}$ 

3

4

5

6

7

 $\frac{23}{24}$  $\frac{24}{24}$ 

9

c

8

 $\frac{24}{19}$ 

10

11

12

13

14

16

15

 $\frac{23}{24}$  $\frac{26}{25}$  $\frac{24}{25}$  $\frac{24}{25}$  $\frac{24}{19}$  $\frac{25}{30}$ B.T.'s & W.T.'s (CONT.)

Cor. Spec. D.B.H. Bear. Dist. B.T. or W.T.







25 Original G.L.O. Corners.

Cor. Spec. D.b.h. Bear. Dist.

29|19  
25|30  
29  
25  
23|29  
26|25  
26|25  
26|25  
35|36  
25  
36  
25|30  
26|31  
25|30.

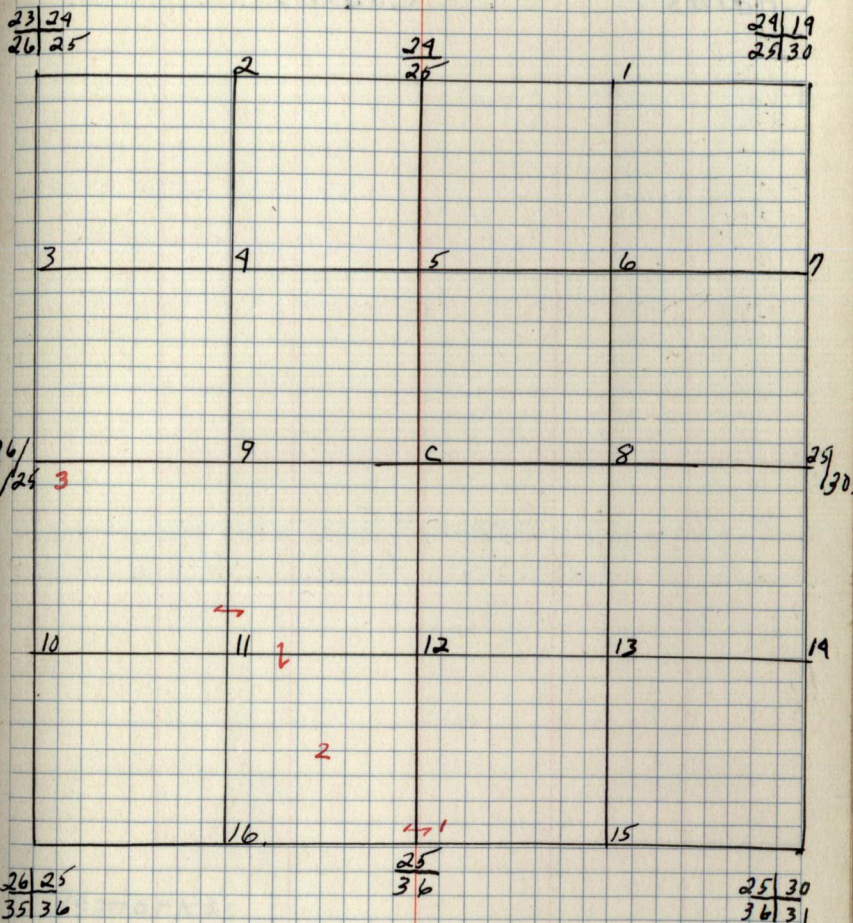
X  
X  
X  
X  
X  
X  
X  
X

B.T.'s Found & W.T.'s Set.

Cor. Spec. D.b.h. Bear. Dist. B.T. or W.T.

Sec. 25 T147N R26W.  
by-

25



B.T.'s & W.T.'s (cont)  
Cor. Spec. D.b.h. Bear. Dist. B.T. or W.T.



Notes

Chains

Chains

|

|

.

Type & Cultural Map


Remarks:



26 Original G.L.O. Corners:

Cor Spec. D.b.h. Bear. DIST.

- 23|29 X
- 26|25 X
- 23 X
- 26 X
- 22|23 X
- 27|26
- 27|26
- 27|26
- 39|35
- 26 X
- 35
- 26|25 X
- 35|36 X
- 26|25 X

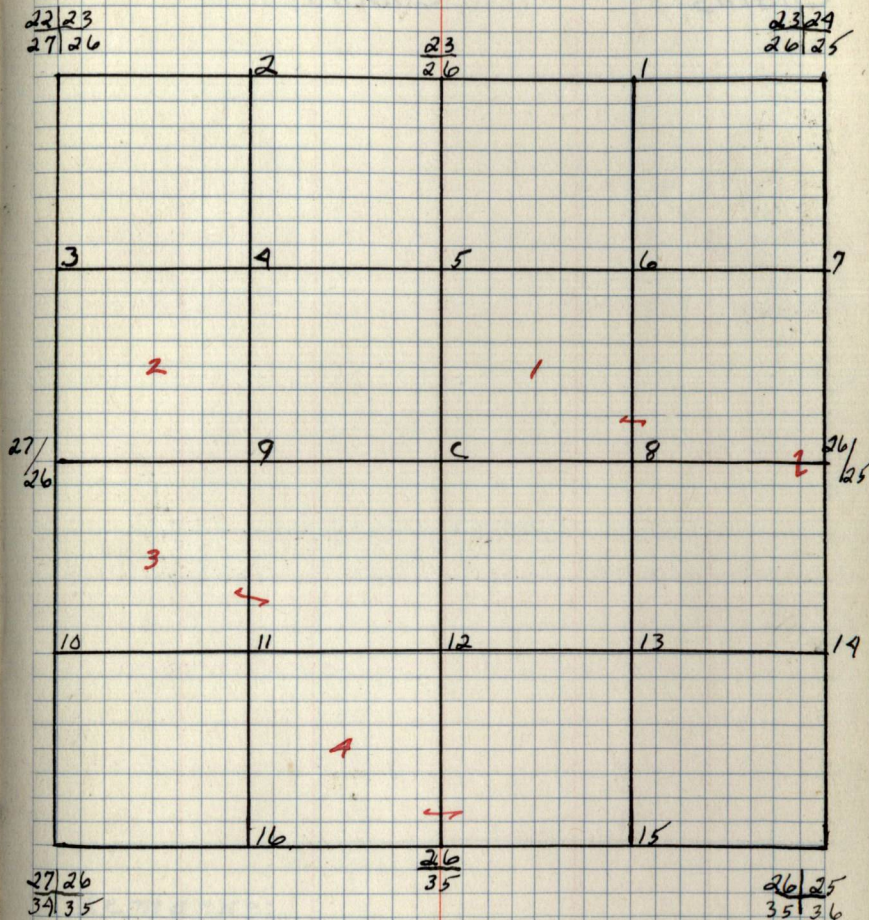
B.T.'s Found & W.T.'s Set

Cor. Spec. D.b.h. Bear. DIST. B.T. OR. W.T.

Sec. 26 T147N R26W.

by -

26



B.T.'s Found & W.T.'s (CONT)

Cor. Spec. D.b.h. Bear. DIST. B.T. OR. W.T.



27

Notes

Chains

Chains.

Type & Cultural Map

27


Remarks:



27

Original G.L.O. Corners.

Cor. Spec. D.b.h. Bear. DIST.

~~22|23~~  
~~27|26~~~~22~~  
~~27~~~~21|22~~  
~~28|27~~

28|27

~~28|27~~  
33|34~~27~~  
34~~27|26~~  
34|35

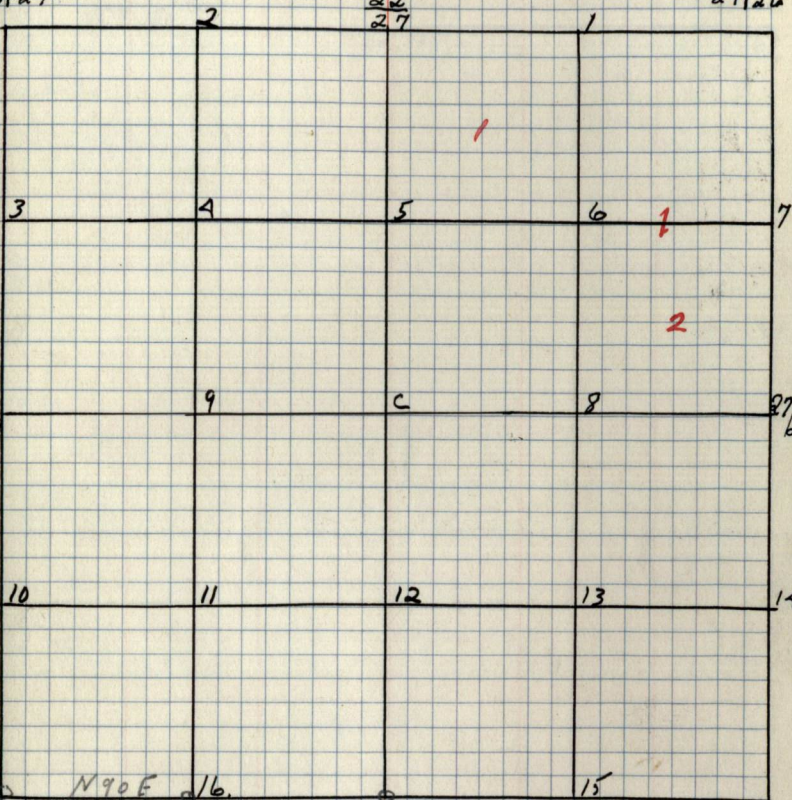
27|26

B.T.'s Found & W.T.'s Set.

Cor. Spec. D.b.h. Bear. DIST.

Sec. 27 T147N R26W.

27

~~21|22~~  
~~28|27~~~~22~~  
~~27~~~~22|23~~  
~~27|26~~~~28|27~~~~27|26~~

10

11

12

13

14

N90E 1/6

15

~~28|27~~  
33|34

20.02

20.02

~~27~~  
34~~27|26~~  
34|35B.T.'s & W.T.'s (CONT)

Cor. Spec. D.b.h. Bear. DIST. B.T. OR W.T.



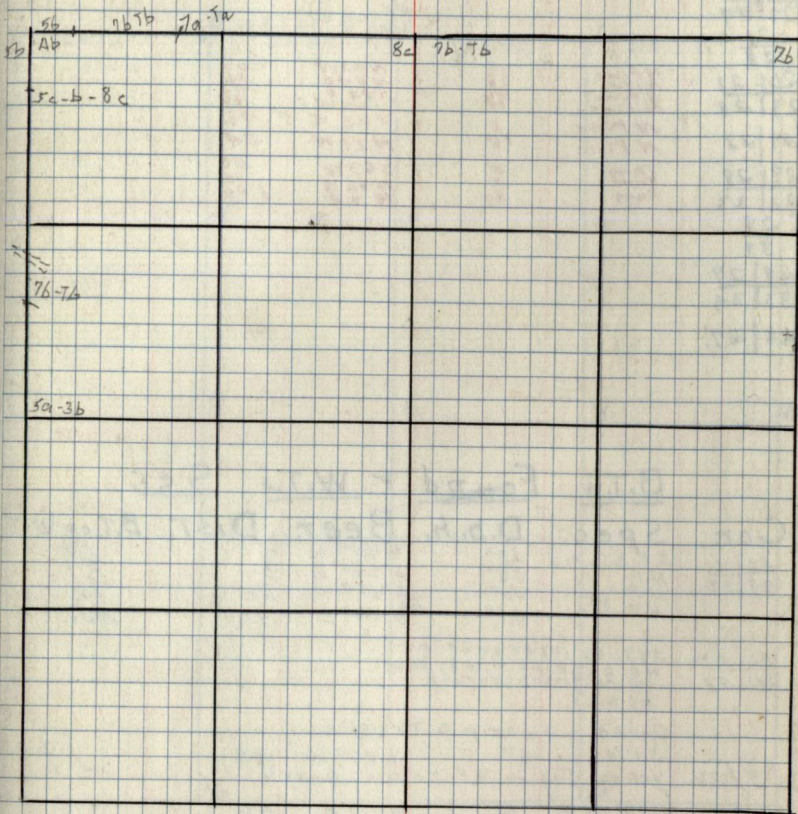
28

Notes

Chains.

Chains.

Type & Cultural Map 28



Remarks:

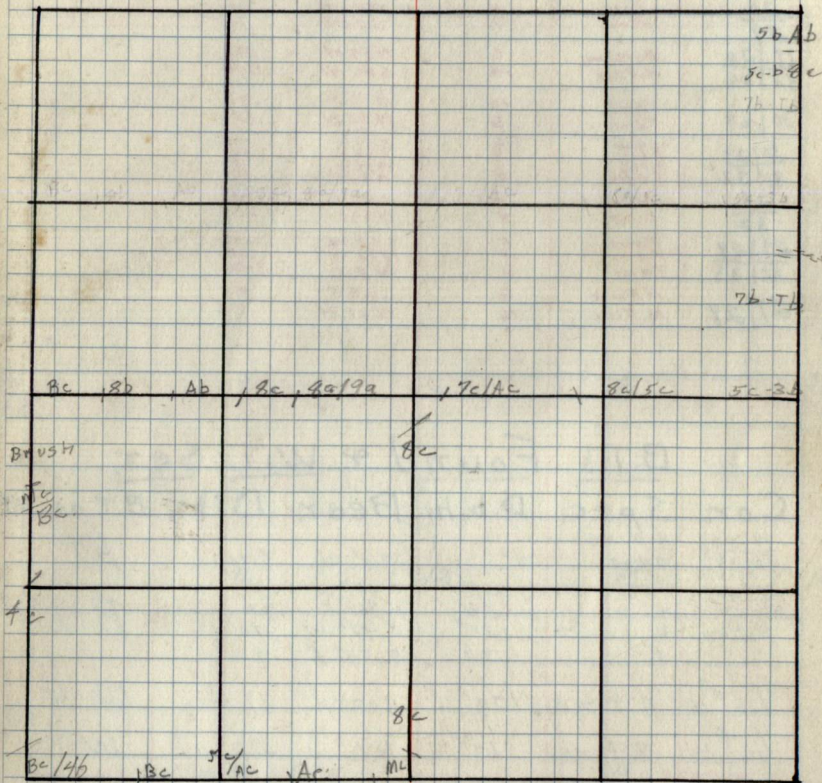






Chains

Chains.



Remarks:



29 Original G.L.O. Corners.

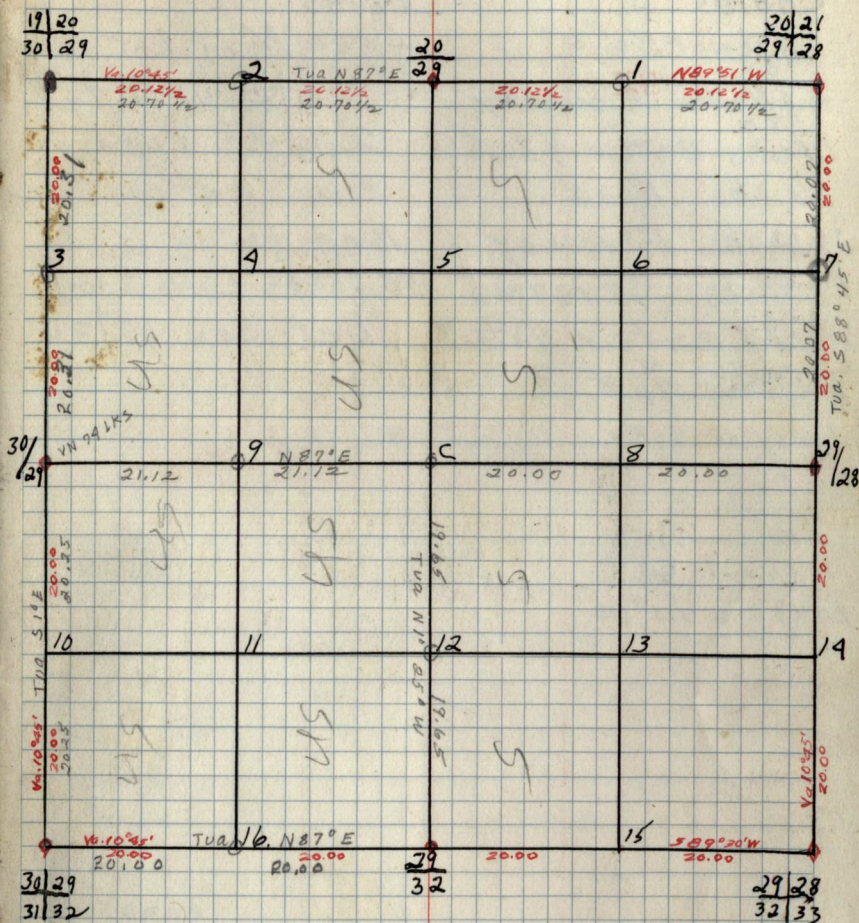
Cor.	Spec.	D.b.h.	Bear.	DIST.
20 21	N. Pine	18	N 82 W	.07
29 28	N. Pine	18	N 79 E	.30
20	N. Pine	18	S 35 E	.42
29	N. Pine	18	S 45 W	.20
20	J. Pine	8	N 42 W	1.00
29	J. Pine	10	S 20 E	.45
19 20	Balsam	6	N 85 W	.375
30 29	N. Pine	14	S 86 W	8.10
30 29	Tam	10	N 77 E	.21
30 29	Tam	6	N 32 W	.13
30 29	Cedar	10	S 39 W	.13
31 32	Birch	10	N 74 E	.12
31 32	Birch	10	N 36 W	.25
29	Spruce	10	N 23 E	.40
29	Birch	7	S 40 E	.27
32	Birch	7	N 39 E	.30
29 28	Tam	5	S 63 W	.80
32 33	Tam	5	N 32 W	.28
32 33	Tam	6	N 7 E	1.00
29 28	N. Pine	8	S 26 E	.43
29 28	N. Pine	16	N 21 W	.29

B.T.'s Found & W.I.T. Set

Cor.	Spec.	D.b.h.	Bear.	DIST.	B.T. or W.I.T.
19 20	N. Pine				
30 29	snag	24"	S 86° W	8.10	BT
20 21	N. Pine stump	28"	N 45° W	.5	
29 28	N. "	28"	N 76° E	.30	BT <sup>25</sup>
Fallow	N. "	30"	S 47° W	.70	
Fallow	N. "	24"	S 33° E	.42	
1/16 # 10	N. Pine	20"	NORTH	17 1/2 Tag.	WT
1/16 # 12	N. Pine	14"	N 0° W	20 "	WT
C 1/4	Bal.	8"	S 1° E	.11 "	WT
1/16 # 9	cedar	8"	W 0° N	.14 "	WT
1/16 # 8	Hsp.	6"	S 67° E	35 "	WT
29 28	J. Pine	8"	N 47° W	.38	
29 28	yellow tag	N.P.	30 LKS. NORTH		
29 28	J. Pine	10	S 61 E	.46	
29 30	Cedar	10"	S 19° E	.45	
31 32	Cedar	16"	S 7° W	.45	
1/16 # 7	spruce	6"	S 27° W	.21	WT

Sec. 29 T147N R26W

by - 29



B.T.'s & W.I.T.'s (CONT)

Cor. Spec. D.b.h. Bear. DIST. B.T. or W.I.T.



## NOTES

Chains

Line work 1/16 #5

2.68 chs Fireway

14 chs enter 88a 55a

16 chs Road

26.03 chs Fireway

29.45 chs Stream

40 chs enter 46 to 7c

50.50 chs 1/16 #3

Line work 1/16 #8

8b

2.50 chs. c1

5.50 chs. 8b 5b

10 chs 9c BC

20.19 chs. 1/16 #13

Chains.

Line N of Lot Cor

3 1/2  
4 1/5 46 to 7c

2 chs 88a 55a

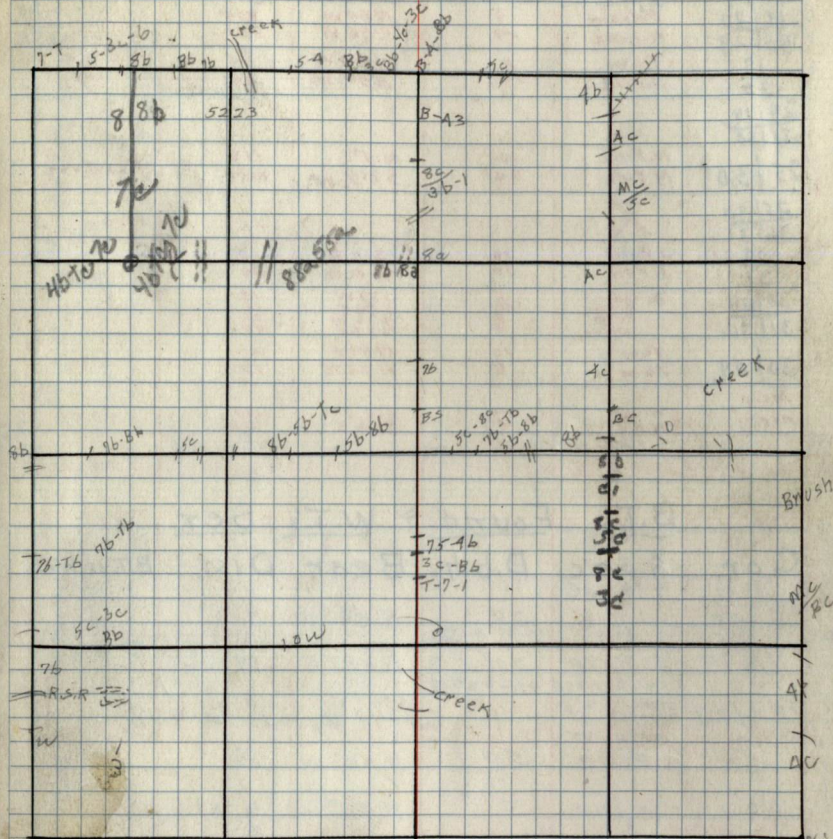
9 chs enter 7c

16 chs enter 8 8a

20.25 chs Lot Cor

Bet Sec 19/30

## Type + Cultural Map. 31



## Remarks

Old GLO 19/30 NP-14" SOR 90 - 8.12  
30/29 Bals 0777 - N 85° W 3.75

E 1/4 T 9m 70" N 87° E .21  
T 9m 6" N 32° W .13



30 Original G.L.O. Corners

Cor.	Spec.	D.b.h.	Bear.	DIST.
19/20	Balsam	6	N85W	375
30/29	N. Pine	14	S86W	8.10
19/30	Tam	8	S34W	1.4
30/29	J. Pine	10	N50W	.86
25/30	N. Pine	10	N4°E	1.19
25/30	N. Pine	24	S75½W	1.84
25/30	X			
30/31	J. Pine	10	S12W	-.13
30/31	J. Pine	10	N6W	-.20
30/29	Cedar	6	S84W	.13
31/32	Birch	5	S74E	.12
31/32	Spruce	5	N26W	.20
30/29	Tam	10	N77E	.21
30/29	Tam	6	N32W	.13
M.C.1	S.W. Oak	10	S8E	.55
M.C.2	N. Oak	8	N28E	.22

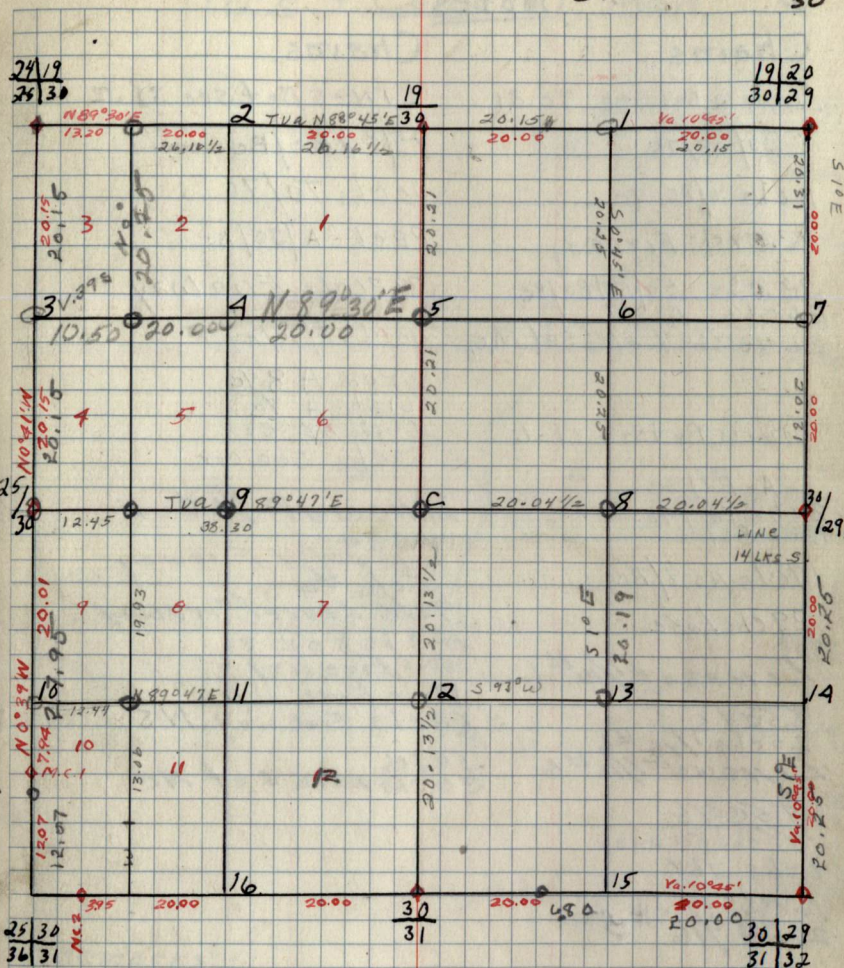
B.T.'s Found & W.T.'s Set.

Cor.	Spec.	D.b.h.	Bear.	DIST.	B.T. OR W.T.
19/20	N. PINE				
30/29	STUB	24"	S86°W	8.14	
1/16 #4	N. PINE	20"	NORTH	-17	Yellow Tag
30/29	birch 4"		S75°W	.22½	New scribed by Chellog
19/30	orig. B.T.		S41°E	.20½	
30/29	J. PINE	20"	N50°W	.86	
New = cedar	5"		N20°W	.61KS	
Lot Cor	Cedar	5"	S48°W	.16½	
3/16	Birch	4"	N49°E	.05	
Lot Cor	J. Pine	3"	N50°W	.11	

Location post 36 Lks. East cor. in Road.

1/16 #5	R. PINE	12"	N85E	.13	w.t. - R.T.
0/14	SPRUCE	6	N31E	.25	BT
	"	6	S50E	.15	BT w.t.
1/16 #8	J. PINE	6	N36W	.29	BT w.t.
1/16 #13	Birch	8"	S1E	.22	w.t.

Sec. 30 T147N R26W. by Kiberke



B.T.'s & W.T.'s (CONT.)

Cor.	Spec.	D.b.h.	Bear.	DIST.	B.T. OR W.T.
1/16 #12	spruce	8"	N39°E	6'	B.T.











## Chains

LINE Betsee 32-5

A 8 30 Ba

80 chs 890/990

13.80 chs Fireway A 8 Ba

200 chs A 90/70

25 chs + 6 T6

30 chs A 70

34 chs T6 T6

76 chs 4 cor

80.28 chs 5 cor cor

LINE WOF 1/16 #4

T6 46

2 chs T6 T6

13 chs AC T6

15 chs T6 T6

20.02 chs 1/16 #13

## Chains.

LINE No F 1/16 #16

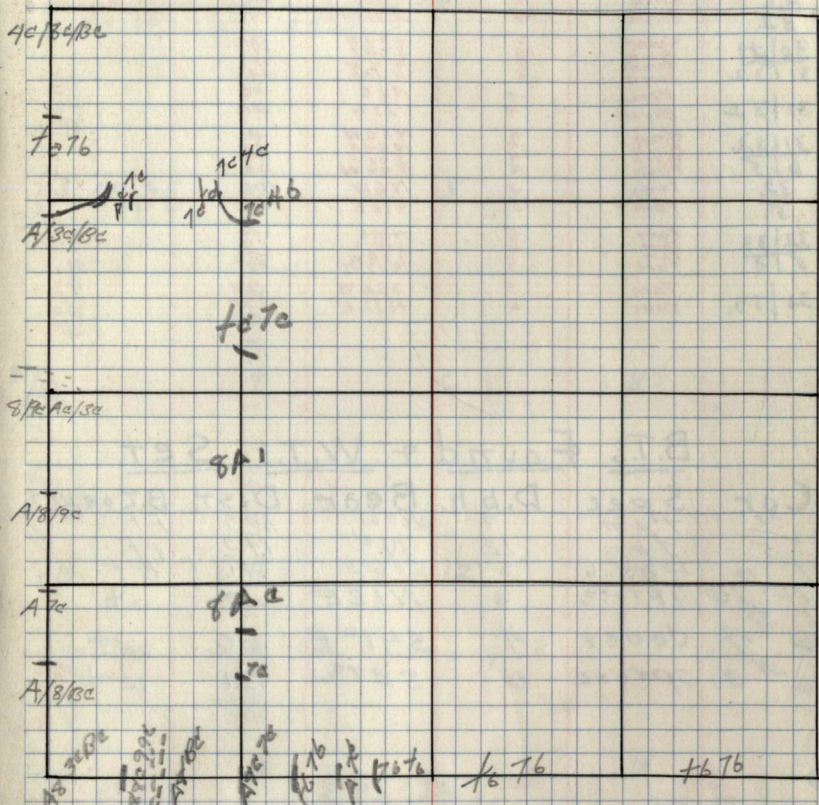
A 81

11 chs T6

15 chs 7 A

14 chs T6 T6

58 chs T6 46



REMARKS:



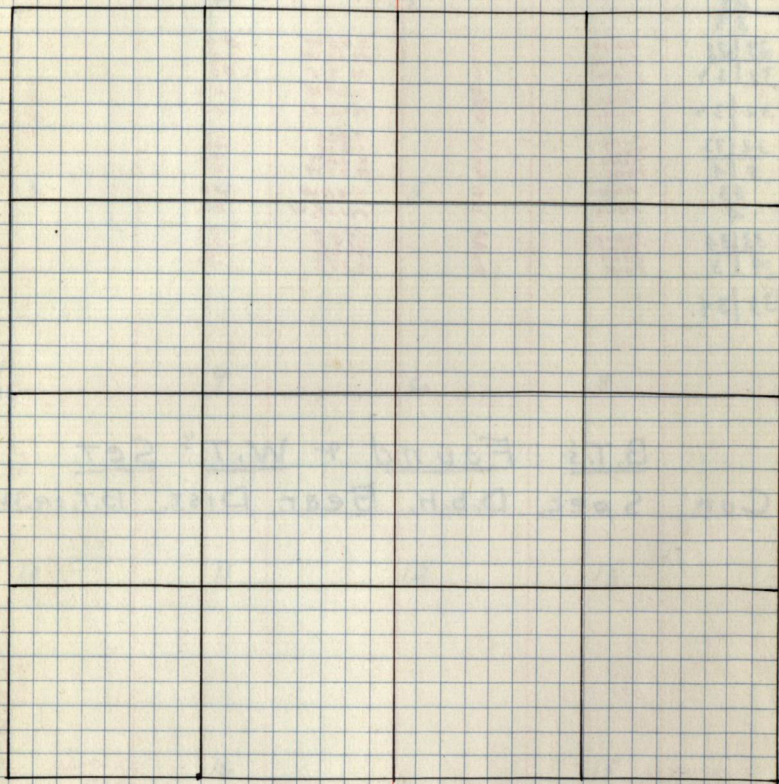




Notes

Chains.

Chains.

Type & Cultural Map 33

Remarks:



33 Original G.L.O. Corners

Cor. Spec. D.b.h. Bear. DIST.

28|27  
33|34

28  
33

29|28 Tam 5 S63W .80

32|33 Tam 6 N32W .78

32|33 Tam 6 N9E 1.00

32|33 Tam 6 S26W .22

32|33 Tam 6 N12E .75

32|33 Tam 6 N80E .39

5|4 Tam 5 S42E .78

33 Tam 5 S78W .92

33 Tam 6 S48W .10

4|3 Tam 3 N126W .82

33|34 Tam 4 S22W .58

4|3 Tam 2 S14E .57

4|3 Tam 2 N69W .15

4|3 Tam 2 N87E .40

33|34.

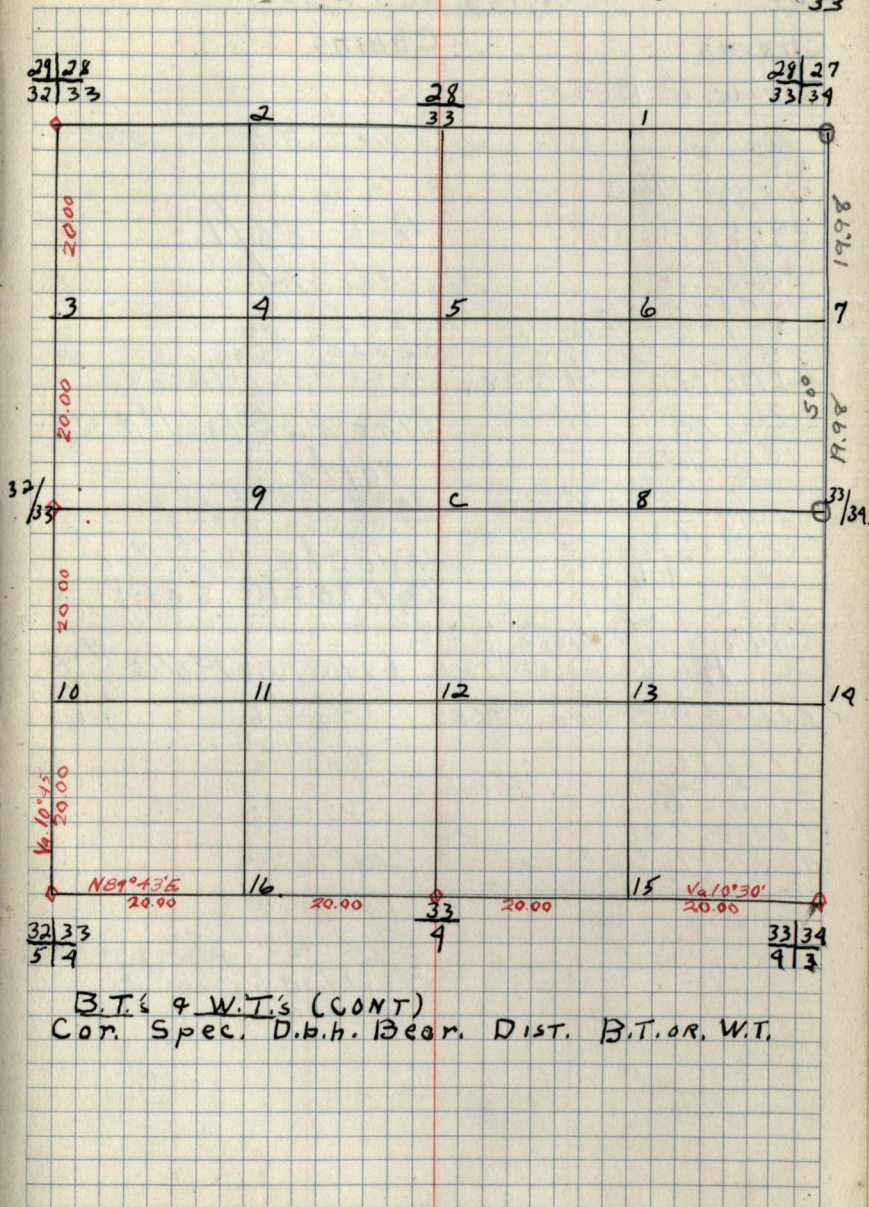
B.T.'s Found & W.T.'s Set.

Cor. Spec. D.b.h. Bear. DIST. B.T. OR. W.T.

Sec. 33 T147N R26W.

by —

33



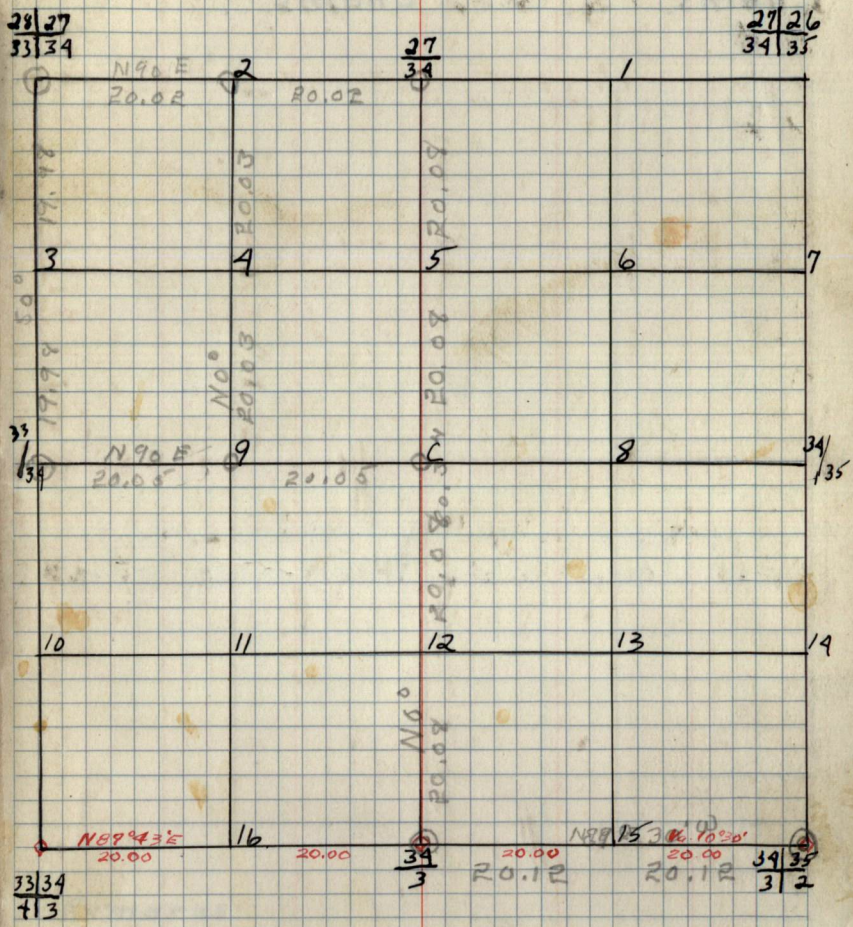
B.T.'s & W.T.'s (CONT)  
Cor. Spec. D.b.h. Bear. DIST. B.T. OR. W.T.







Sec. 34 T147N R26W. by - 34



B.T.'s & W.T.'s (CONT)  
 Cor. Spec. D.b.h. Bear. Dist. B.T. OR. W.T.

34 Original G.L.O. Corners

Cor.	Spec.	D.b.h.	Bear. Dist.
27/26			
34/35			
27			
34			
28/27			
33/34			
33/34			
33/34	Tam	4	S22W .53
4/3	Tam	4	S16E .72
4/3	Tam	4	N32E .70
34	B. of Gil.	3	S37E .64
3	Aspen	3	N2E .59
34/35	Cedar	12"	N53E .69
3/2	Spruce	'6"	N12W 2.00
3/2	Cedar	'6"	S34W 2.20
34/35			

B.T.'s Found & W.T.'s Set.

Cor.	Spec.	D.b.h.	Bear. Dist.	B.T. OR. W.T.
34/35	Sp. Stob	4"	S37W .74	B.T.
3/2	L. Postex.	4"	W. .12	
34	Sp. Stob	4"	S15W .71	wt.
3	"	3"	S60W .70	wt.
28/27	Tam	3"	N19E .21	wt.
33/34	"	3"	N56W 5-6	wt.
34/27	Tam	3	N61E .51	wt.
33/34	B. of Gil.	2"	S54W .30	wt.
34	Tam	6"	S88E .95	wt.
C/14	Aspen	8"	N22E 10	w.t.
1/6 #9	Spruce	6"	S88E .20	w.t.
1/6 #2	J. PINE	4"	N23E .41	w.t.











Notes.

Chains

Chains.

Type & Cultural Map


Remarks:



36

Original G.L.O. Corners.

Cor. Spec. D.b.h Bear. DIST.

25 30
36 31
25
36

X

26 25
35 36

X

35|36

35 36
2 1

Cedar	6	S 57° E	.38
Balsam	10	N 12° E	.33
Cedar	12	N 66° W	.30
Cedar		S 25° W	.12

36
1

Aspen	7	N 59° W	.40
Tam	7	S 26° W	.47

36 31
1 6

36 31
M.C. 1
M.C. 2

X

M.C. 1	6	N 89 1/2° W	18.69
Aspen	6	N 87° E	2.95
Aspen	14	S 83° E	3.30

Tam	6	N 89 1/2° W	18.69
Aspen	6	N 87° E	2.95
Aspen	14	S 83° E	3.30

B.T.'s Found & W.T.'s Set.

Cor. Spec. D.b.h. Bear. DIST. B.T. or W.T.

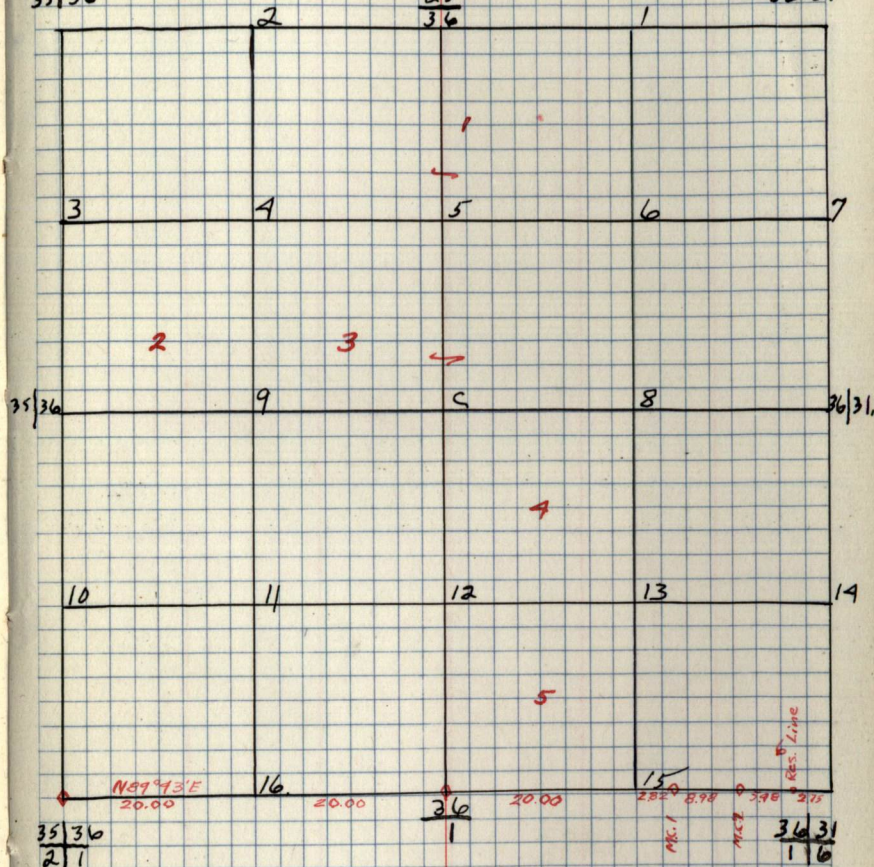
Sec. 36 T147N R26W.

by —

36

26 25
35 36

25 30
36 31



35 36
2 1

36
1

36 31
1 6

B.T.'s & W.T.'s (CONT.)

Cor. Spec. D.b.h. Bear. DIST. B.T. or W.T.



Pages 037-End  
are blank