

Do not film

CCC 31

EUGENE DIETZGEN CO.

DRAWING MATERIALS, MATHEMATICAL and
SURVEYING INSTRUMENTS

Chicago New York San Francisco New Orleans Pittsburg Toronto

Distances from Center of Roadway for Cross-Sectioning
Roadway 16 feet wide. Side Slopes 1 on 1.
For Single Track Embankment.

H	0	.1	.2	.3	.4	.5	.6	.7	.8	.9	H
0	8.0	8.1	8.2	8.3	8.4	8.5	8.6	8.7	8.8	8.9	0
1	9.0	9.1	9.2	9.3	9.4	9.5	9.6	9.7	9.8	9.9	1
2	10.0	10.1	10.2	10.3	10.4	10.5	10.6	10.7	10.8	10.9	2
3	11.0	11.1	11.2	11.3	11.4	11.5	11.6	11.7	11.8	11.9	3
4	12.0	12.1	12.2	12.3	12.4	12.5	12.6	12.7	12.8	12.9	4
5	13.0	13.1	13.2	13.3	13.4	13.5	13.6	13.7	13.8	13.9	5
6	14.0	14.1	14.2	14.3	14.4	14.5	14.6	14.7	14.8	14.9	6
7	15.0	15.1	15.2	15.3	15.4	15.5	15.6	15.7	15.8	15.9	7
8	16.0	16.1	16.2	16.3	16.4	16.5	16.6	16.7	16.8	16.9	8
9	17.0	17.1	17.2	17.3	17.4	17.5	17.6	17.7	17.8	17.9	9
10	18.0	18.1	18.2	18.3	18.4	18.5	18.6	18.7	18.8	18.9	10
11	19.0	19.1	19.2	19.3	19.4	19.5	19.6	19.7	19.8	19.9	11
12	20.0	20.1	20.2	20.3	20.4	20.5	20.6	20.7	20.8	20.9	12
13	21.0	21.1	21.2	21.3	21.4	21.5	21.6	21.7	21.8	21.9	13
14	22.0	22.1	22.2	22.3	22.4	22.5	22.6	22.7	22.8	22.9	14
15	23.0	23.1	23.2	23.3	23.4	23.5	23.6	23.7	23.8	23.9	15
16	24.0	24.1	24.2	24.3	24.4	24.5	24.6	24.7	24.8	24.9	16
17	25.0	25.1	25.2	25.3	25.4	25.5	25.6	25.7	25.8	25.9	17
18	26.0	26.1	26.2	26.3	26.4	26.5	26.6	26.7	26.8	26.9	18
19	27.0	27.1	27.2	27.3	27.4	27.5	27.6	27.7	27.8	27.9	19
20	28.0	28.1	28.2	28.3	28.4	28.5	28.6	28.7	28.8	28.9	20
21	29.0	29.1	29.2	29.3	29.4	29.5	29.6	29.7	29.8	29.9	21
22	30.0	30.1	30.2	30.3	30.4	30.5	30.6	30.7	30.8	30.9	22
23	31.0	31.1	31.2	31.3	31.4	31.5	31.6	31.7	31.8	31.9	23
24	32.0	32.1	32.2	32.3	32.4	32.5	32.6	32.7	32.8	32.9	24
25	33.0	33.1	33.2	33.3	33.4	33.5	33.6	33.7	33.8	33.9	25
26	34.0	34.1	34.2	34.3	34.4	34.5	34.6	34.7	34.8	34.9	26
27	35.0	35.1	35.2	35.3	35.4	35.5	35.6	35.7	35.8	35.9	27
28	36.0	36.1	36.2	36.3	36.4	36.5	36.6	36.7	36.8	36.9	28
29	37.0	37.1	37.2	37.3	37.4	37.5	37.6	37.7	37.8	37.9	29
30	38.0	38.1	38.2	38.3	38.4	38.5	38.6	38.7	38.8	38.9	30
31	39.0	39.1	39.2	39.3	39.4	39.5	39.6	39.7	39.8	39.9	31
32	40.0	40.1	40.2	40.3	40.4	40.5	40.6	40.7	40.8	40.9	32
33	41.0	41.1	41.2	41.3	41.4	41.5	41.6	41.7	41.8	41.9	33
34	42.0	42.1	42.2	42.3	42.4	42.5	42.6	42.7	42.8	42.9	34
35	43.0	43.1	43.2	43.3	43.4	43.5	43.6	43.7	43.8	43.9	35
36	44.0	44.1	44.2	44.3	44.4	44.5	44.6	44.7	44.8	44.9	36
37	45.0	45.1	45.2	45.3	45.4	45.5	45.6	45.7	45.8	45.9	37
38	46.0	46.1	46.2	46.3	46.4	46.5	46.6	46.7	46.8	46.9	38
39	47.0	47.1	47.2	47.3	47.4	47.5	47.6	47.7	47.8	47.9	39
40	48.0	48.1	48.2	48.3	48.4	48.5	48.6	48.7	48.8	48.9	40

Example—If point is 22.6 ft. above grade, how far should it be from center line to be a slope stake point? Ans. from Table 30.6. For same slopes but other widths of roadbed, correct above figures by one-half difference in width of roadbed; thus in example above, for 20 ft. roadbed distance will be $30.6 + (20 - 16) \div 2$ or 2 ft. added to $30.6 = 32.6$. For slopes of 1 on $1\frac{1}{2}$ see inside of back cover.

Copyright, 1914, by Eugene Dietzgen Co.

Scanned

8-20-12

Ranney

The paper stock of this book is made of a high grade 50% rag paper having a water resisting surface and is sewed with Bing Special Enamel Waterproof Thread.

Made in U. S. A.

T147N - R26W 5th Mer.

Original G.L.O. Survey by B.C. Baldwin

Var 10°30'

Legend

- ◆ G.L.O. Corner Positively Identified
- ◇ Probable G.L.O. Corner
- F.S. Corner
- ⊙ County Corner
- ◇ Corner Set in Original survey
- ✗ Corner in Fake

Legend For Type Map

- | | | | |
|----------------|--------------|----------------|-------------------------|
| 0 | Grassland | A | Aspen |
| 0 ₁ | Wild Pasture | B | Balsam |
| 0 ₂ | Hay Meadow | C | Cultivated |
| 1 | Brush | C ₁ | Impoverished Field |
| 1 _s | Swamp Brush | M | Mixed Hardwood |
| 2 | Muskeg | L | Maple |
| 3 | Birch | K | Oak |
| 4 | Cedar | R | Ash |
| 5 | Jack Pine | sw | Swamp |
| 6 | White Spruce | Tbx | Non-productive-stagnant |
| 7 | Black Spruce | W | Water |
| 8 | Norway Pine | X | Seed trees |
| T | Tamarack | | |
| 9 | White Pine | | |

- a Reproduction - up to 6'
- b Saplings - in Height to 4.5" D.B.H.
- c Poles - 4.5" D.B.H. to 9.5" D.B.H.
- Capitals - Sawtimber over 9.5" D.B.H.

- = Improved Road
- === Woods Road
- ~ Stream - showing direction of flow
-))) Body of water

snr Pronounced Ridge

All data in red taken from original survey

1

Notes

Chains:

Chains:

Type & Cultural Map

Remarks

1. Original G.L.O. Corners

Cor. Spec. D.b.h. Bear. Dist.

$\frac{36}{1} \overline{)31}$
36
1

$\frac{35}{2} \overline{)36}$
70
21

211

$\frac{2}{11} \overline{)12}$

X

$\frac{1}{12}$

X

$\frac{1}{12} \overline{)16}$

X

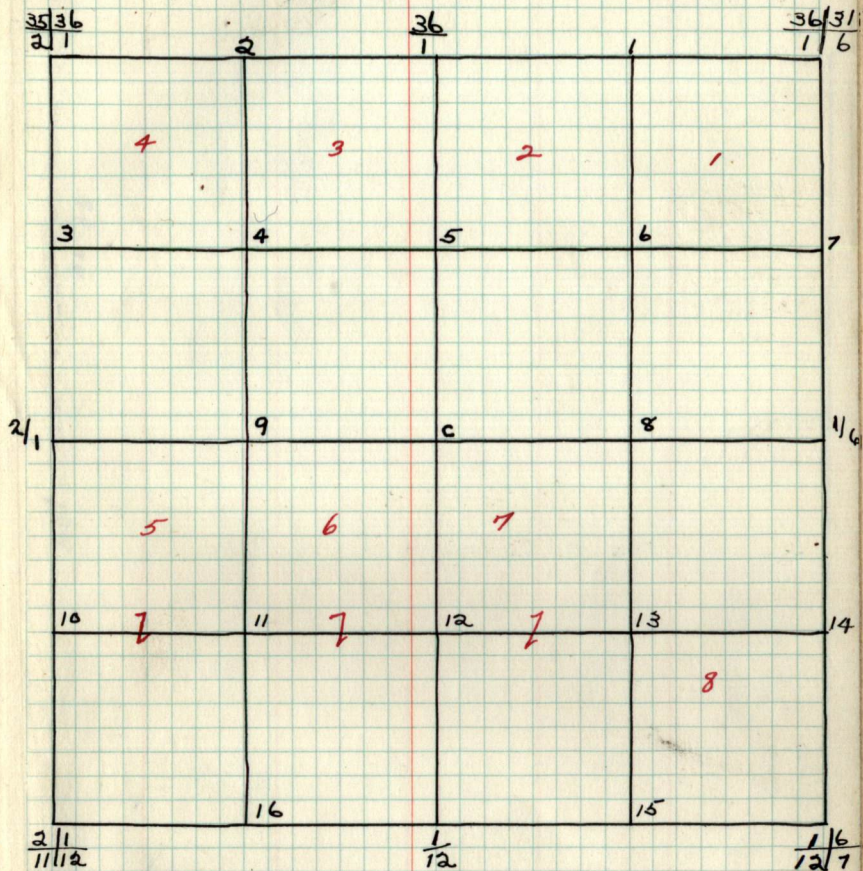
116

B.T.'s Found + W.T.'s Set

Cor. Spec. D.b.h. Bear. Dist. B.T. or W.T.

Sec. 1 T. 147 N. R. 26 W.

by -



B.T.'s + W.T.'s (cont.)

Cor. Spec. D.b.h. Bear. Dist. B.T. or W.T.

2.

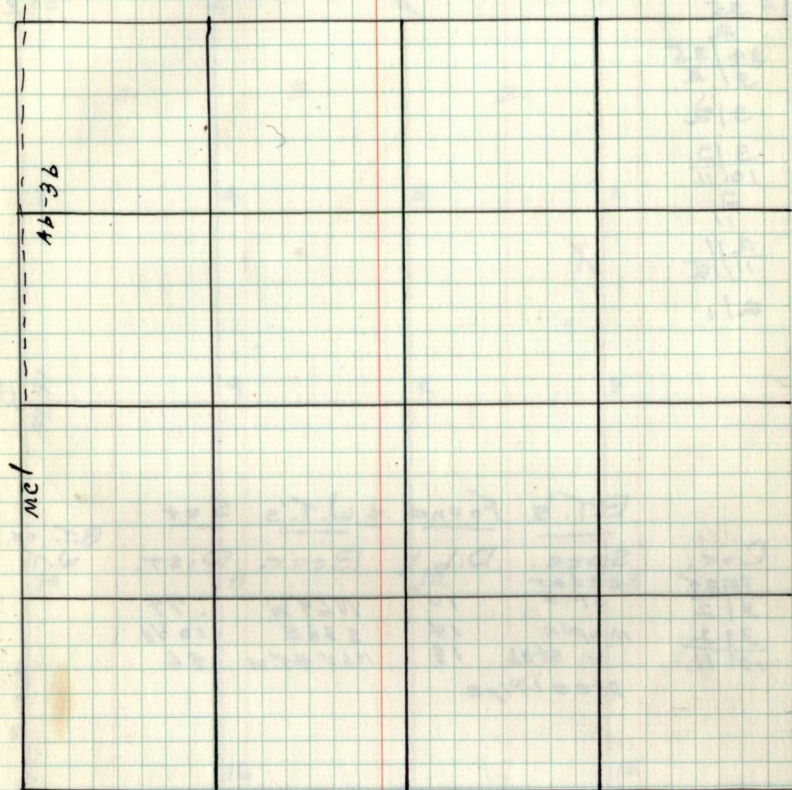
Notes

Chains:

Chains:

Type & Cultural map

2



Remarks:

2.

Original G.L.B. Corners

Cor.	Spec	D.b.h.	Bear.	Dist.
35/36				
2/1				
35				
2				
34/35				
3/2				
3/2				
3/2				
10/11				
2				
11				
2/1				
11/12				
2/1				

X

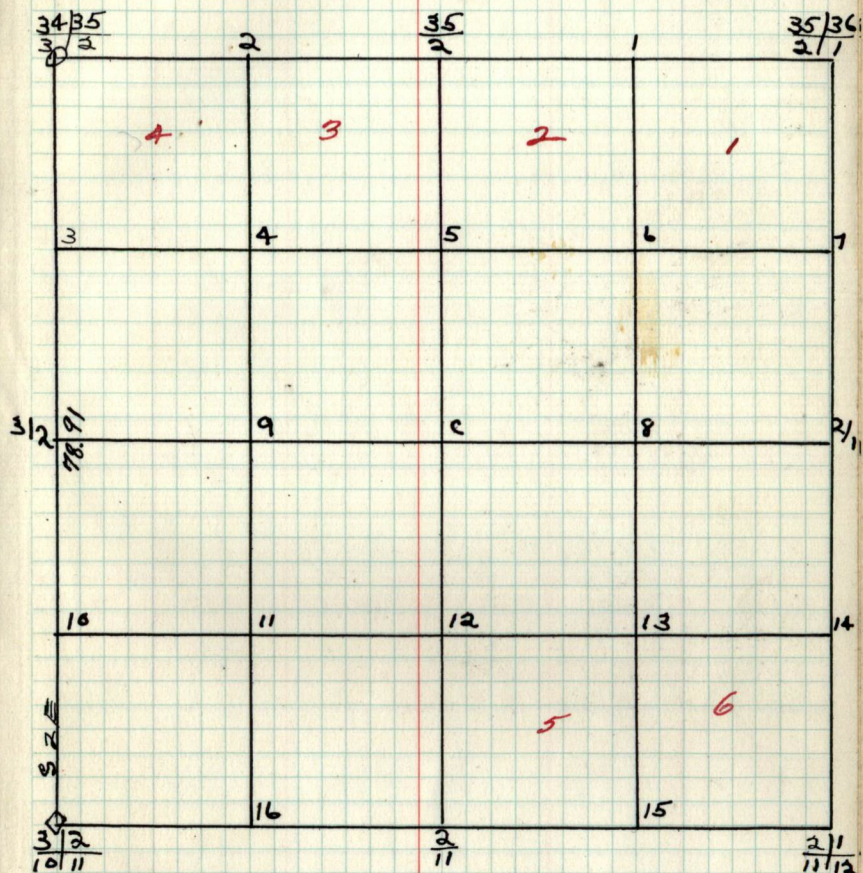
B.T.'s Found & W.T.'s Set

Cor.	Spec.	D.b.h.	Bear.	Dist.	B.T. or W.T.
34/35	cedar stub	10"	N69W	.79	
3/2	Maple	14	S36E	.10 1/8	
3/2	" stub	18	N60°45'W	.86	
10/11	steel pipe				

Sec. 2 T. 147 N. R. 26 W.

2

by -



B.T.'s & W.T.'s (cont.)

Cor. Spec. D.b.h. Bear. Dist. B.T. or W.T.

Chains:

Notes

Chains:

Type & Cultural Map

3

Remarks:

3.

Original G.L.O. Corners

Cor. Spec. D.b.h. Bear. Dist.

 $\frac{34}{3} | \frac{35}{2}$ $\frac{34}{3}$ X $\frac{33}{4} | \frac{34}{3}$

4/3 X

 $\frac{4}{9} | \frac{13}{10}$ $\frac{3}{10}$ $\frac{3}{11} | \frac{2}{11}$

3/2

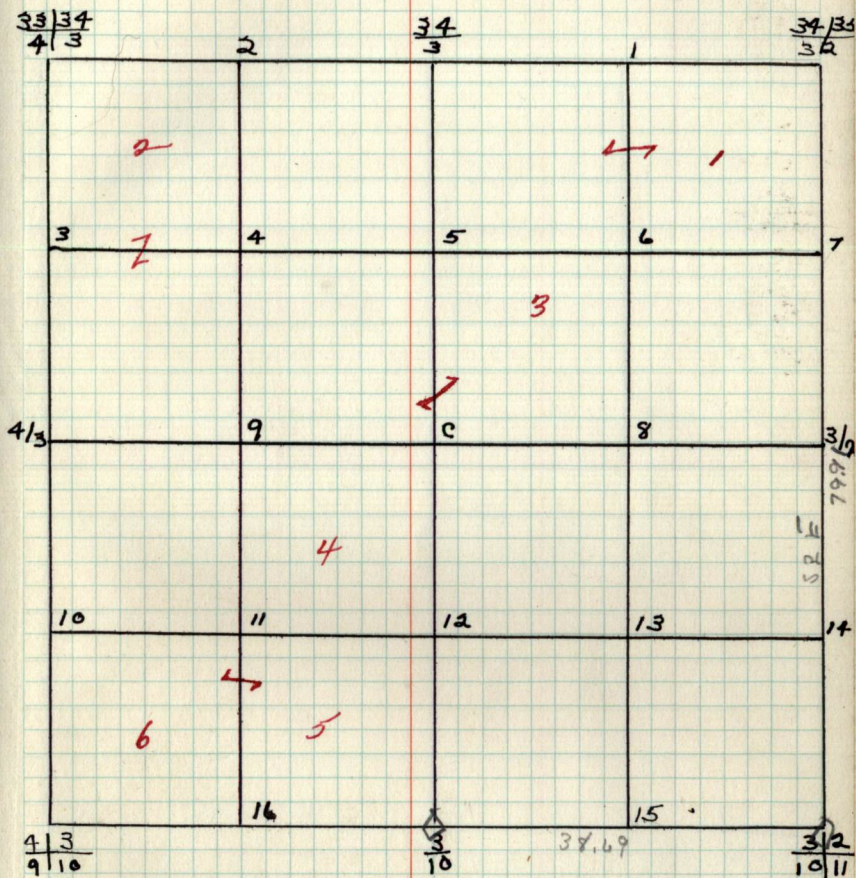
B.T.'s Found & W.T.'s Set

Cor. Spec. D.b.h. Bear. Dist. B.T. or W.T.

Sec. 3 T. 147 N. R. 26 W.

3

by—



B.T.'s + W.T.'s (cont.)

Cor. Spec. D.b.h. Bear. Dist. B.T. or W.T.

4.

Notes

Chains:

Chains:

Type & Cultural Map

4

Remarks:

4. Original G.L.O. Corners

Cor. Spec. D.b.h. Bear. Dist.

$\frac{33}{4} | \frac{34}{3}$

$\frac{32}{5} | \frac{33}{4}$

$\frac{33}{4}$ X

5 | 4

$\frac{5}{8} | \frac{4}{9}$

$\frac{4}{9}$

$\frac{4}{9} | \frac{3}{10}$

4 | 3 X

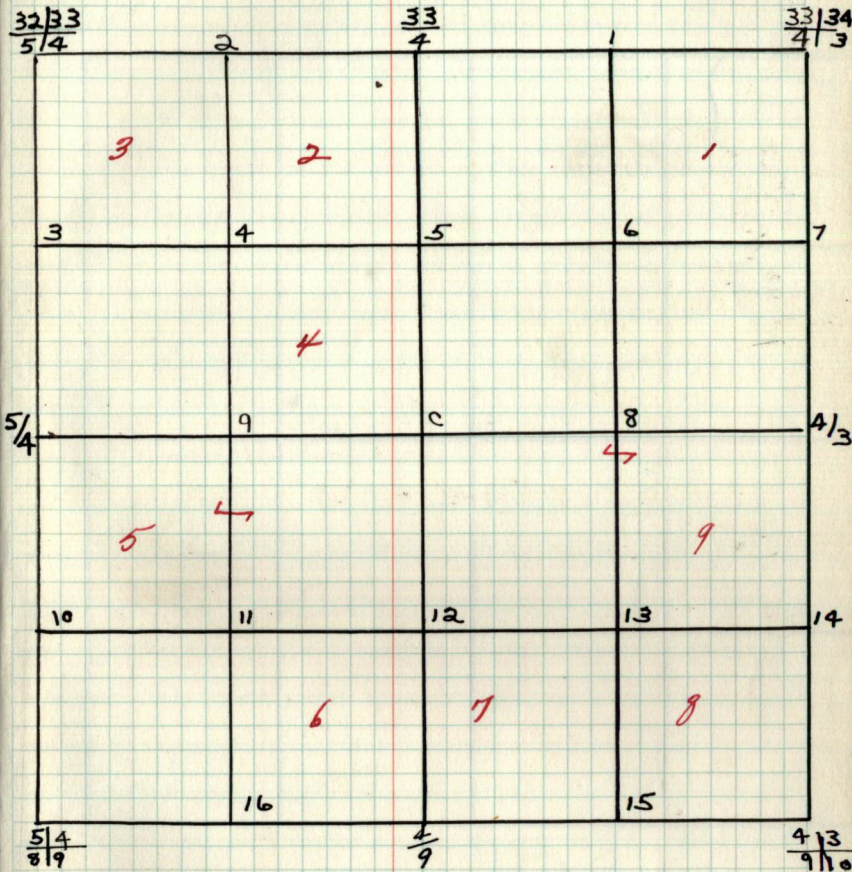
B.T.'s Found & W.T.'s Set

Cor. Spec. D.b.h. Bear. Dist. B.T. or W.T.

Sec. 4 T. 147 N. R. 26 W.

4

by -



B.T.'s + W.T.'s (cont.)

Cor. Spec. D.b.h. Bear. Dist. B.T. or W.T.

5.

Notes

Chains:

Chains

)

Type & Cultural Map

5

Remarks:

5.

Original G.L.O. Corners

Cor.

Spec. D.b.h. Bear. Dist.

 $\frac{32}{5} | \frac{33}{4}$ $\frac{32}{5}$ $\frac{31}{6} | \frac{32}{3}$

615

 $\frac{6}{7} | \frac{5}{8}$ $\frac{5}{8}$ $\frac{5}{8} | \frac{14}{9}$

519

M.e.1

X

X

X

Tam

8

S85E

5.40

No Trees

B.T.'s Found \pm W.T.'s Set

Cor.

Spec. D.b.h. Bear. Dist.

B.T. or
W.T.

Sec. 5 T.147 N. R.26 W.

5

by -

 $\frac{31}{6} | \frac{32}{5}$

2

 $\frac{32}{5}$

1

 $\frac{32}{5} | \frac{33}{4}$

4

3

2

1

3

4

5

6

7

L

5

L

9

c

8

5/4

L

6

10

11

12

13

14

L

7

 $\frac{5}{7} | \frac{15}{8}$ 18.2716 N89W 4.00
5.50 14.50 m.e. 1520.00
41.1415 $\sqrt{10^{\circ} 45'}$
20.00 $\frac{5}{8} | \frac{14}{9}$ B.T.'s + W.T.'s (Conti)
Cor. Spec. D.b.h. Bear. Dist. B.T. or W.T.

6.

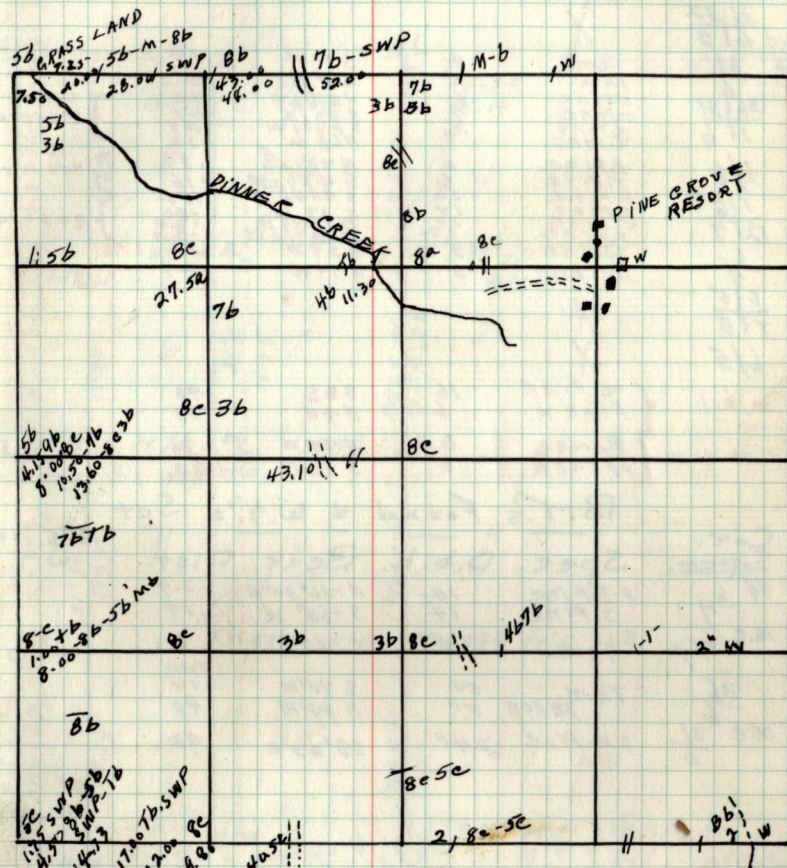
Notes

chains:

chains:

Type & Cultural Map

6



Remarks:

Original G.L.O. Corners

Cor.	Spec.	D.b.h.	Bear.	Dist.	
31/32 6/5	X				
31	Tam.	4	S 70° W	.14	} Resurvey
31	Tam.	5	N 44° W	.40	
36/31	J. Pine	8	N 53 1/4° E	.44	
1/6	J. Pine	7	S 43 1/4° W	.43	
	W. Pine	7	S 74 1/4° W	.29	} Resurvey
	T. Pine	7	N 68° W	.37	
1/6	J. Pine	6	N 70° V 2° E	.34	
1/6	J. Pine	6	S 43 1/2° W	.16	
1/6	J. Pine	16	S 75 1/2° E	.52	} Resurvey
12/7	J. Pine	14	S 37° W	.44	
6/7	J. Pine	10	N 43 1/2° W	.29	
6/5	J. Pine	5	S 59° W	.17	
7/8	J. Pine	5	S 59° W	.24	

6/5	X				
7/8	X				
6/5	X				
m.e. 1	W. Pine	16	S 8° E	.98	
	Aspen	6	N 4° E	.93	
m.e. 2	Spruce	6	N 75° W	1.30	
	Spruce	6	S 9° W	1.50	

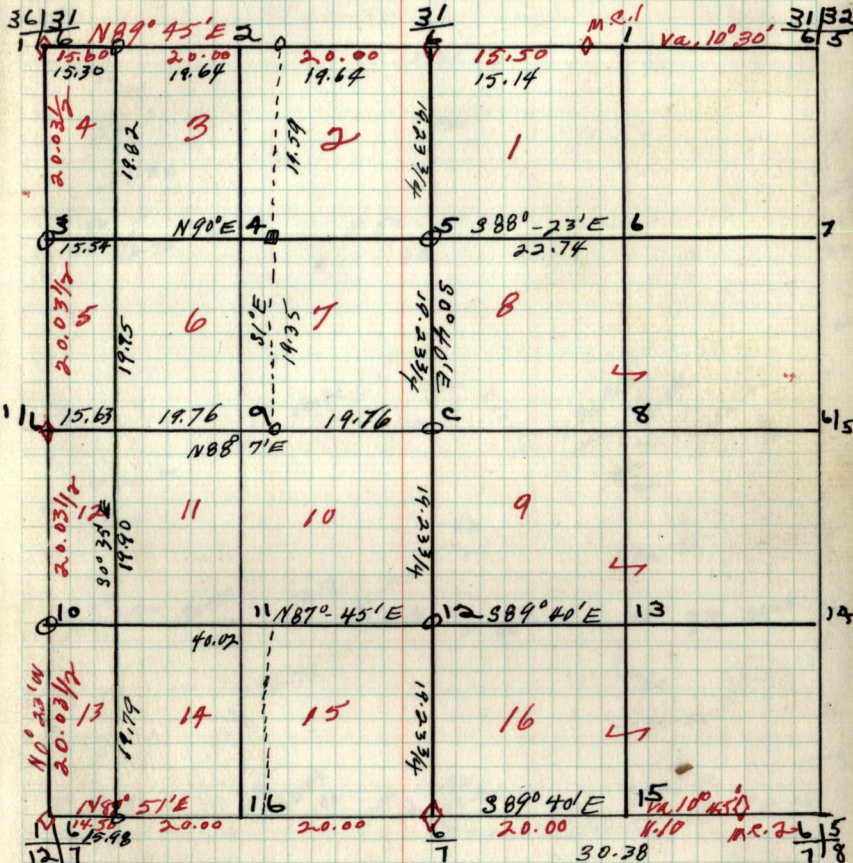
B.T.'s Found & W.T.'s Set

Cor.	Spec.	D.b.h.	Bear.	Dist.	B.T. or W.T.
44 6/7	J. Pine	12	N 16° 30' W	.24	
	J. Pine	14	S 65° W	.14	
m.c. 6/7	Tam.	14	S 66° W	.6	
36/6	Tam. Fallen	5"	S 70° W	.14	
		5"	N 44° W	.40	
m.c. 3/6	D.W. Pine	24"	S 8° 23' E	.98	

$$\begin{array}{r} 34 \\ 66 \\ \hline 100 \\ 104 \\ \hline 204 \end{array}$$

$$\begin{array}{r} 116 \\ 66 \\ \hline 182 \\ 96 \\ \hline 1056 \end{array}$$

Sec. 6 T. 141 N. R. 26 W.



B.T.'s + W.T.'s (cont.)
 Cor. spec. D.b.h. Bear. Dist. B.T. or W.T.

7.

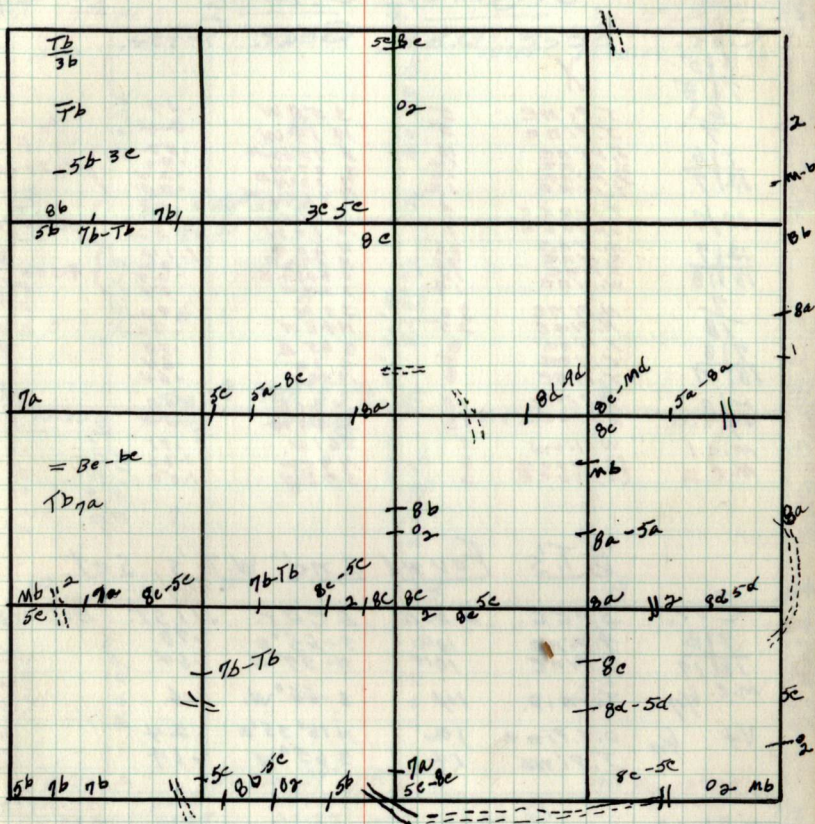
Notes

Chains:

Chains:

Type & Cultural Map

7



Remarks:

7.

Notes

Chains:

Chains:

Original G.L.O. Corners

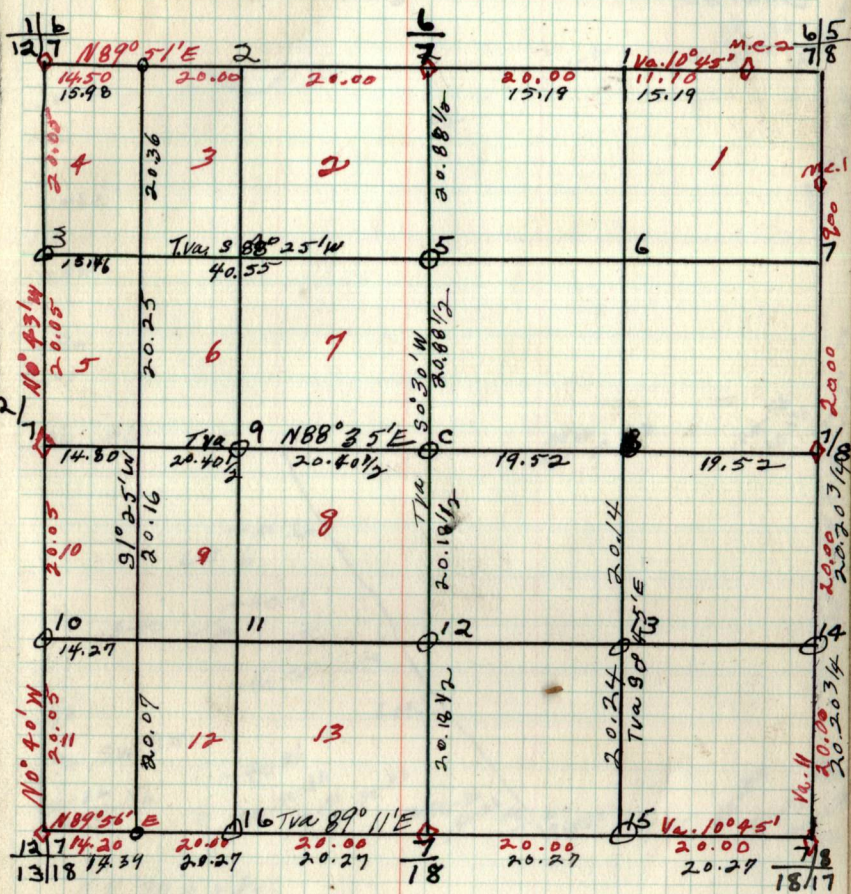
Cor.	Spec.	D.b.h.	Bear.	Dist.
6/5	X			
7/8	J. Pine	5	S 59 W	.14
6/7	J. Pine	5	N 14 W	.24
1/6	J. Pine	16	S 75 1/2 E	.52
12/7	J. Pine	10	S 37 W	.24
	J. Pine	12	N 33 1/4 E	.24
	J. Pine		N 46 3/4 W	.24
12/7	Spruce	4	N 57 E	.39
	Spruce	5	N 10 W	.32
12/7	N. Pine	36	N 60 E	1.14
13/18	J. Pine	36	N 5 1/2 W	.32
	J. Pine	10	S 62 1/2 E	.29
	W. Pine	14	S 24 W	.34
7/8	N. Pine	30	S 5 W	.92
	N. Pine	25	N 48 W	.42
7/8	J. Pine	8	S 65 E	.78
7/8	J. Pine	8	S 1 W	.64
18/17	J. Pine	8	N 59 W	.64
7/8	J. Pine	10	N 40 E	.08
	N. Pine	18	S 41 W	.52
M.C.1	Willow	5	S 61 W	.31
M.C.2	Spruce	6	N 75 W	1.30
			S 78 W	1.50

B.T.'s Found and W.T.'s set

Cor.	Spec.	D.b.h.	Bear.	Dist.	B.T. or W.T.
7/8	J. Pine	10 1/2	S-65° E	.78	
18/17	J. Pine	10 1/2	N-57° W	.64	
M.C. 6/7	Tarn. D.	14	S-66° W	.6	
1/4 6/7	D.T. Pine	12	N 16° 35' W	.24	
	J. Pine	14	S 65° W	.14	

Sec. 7 T. 147 N. R. 26 W.
by-

7



B.T.'s & W.T.'s (cont.)

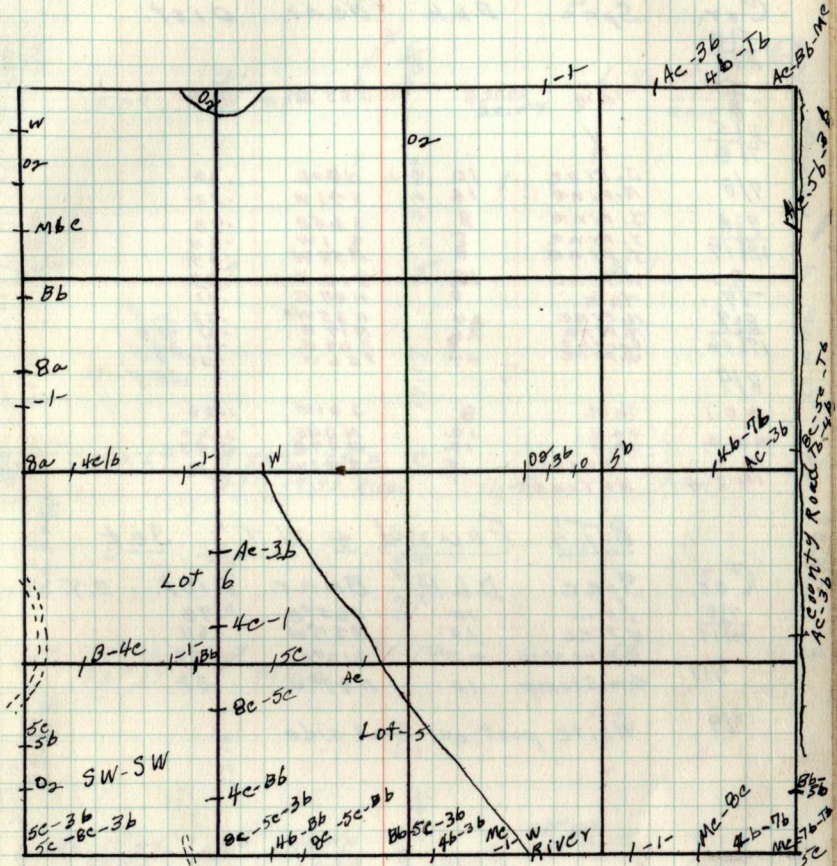
Cor.	Spec.	D.b.h.	Bear.	Dist.	B.T. or W.T.
------	-------	--------	-------	-------	--------------

Chains

Notes

Chains.

Typed & Cultural map



Remarks:

8.

Original G.L.O. Corners.

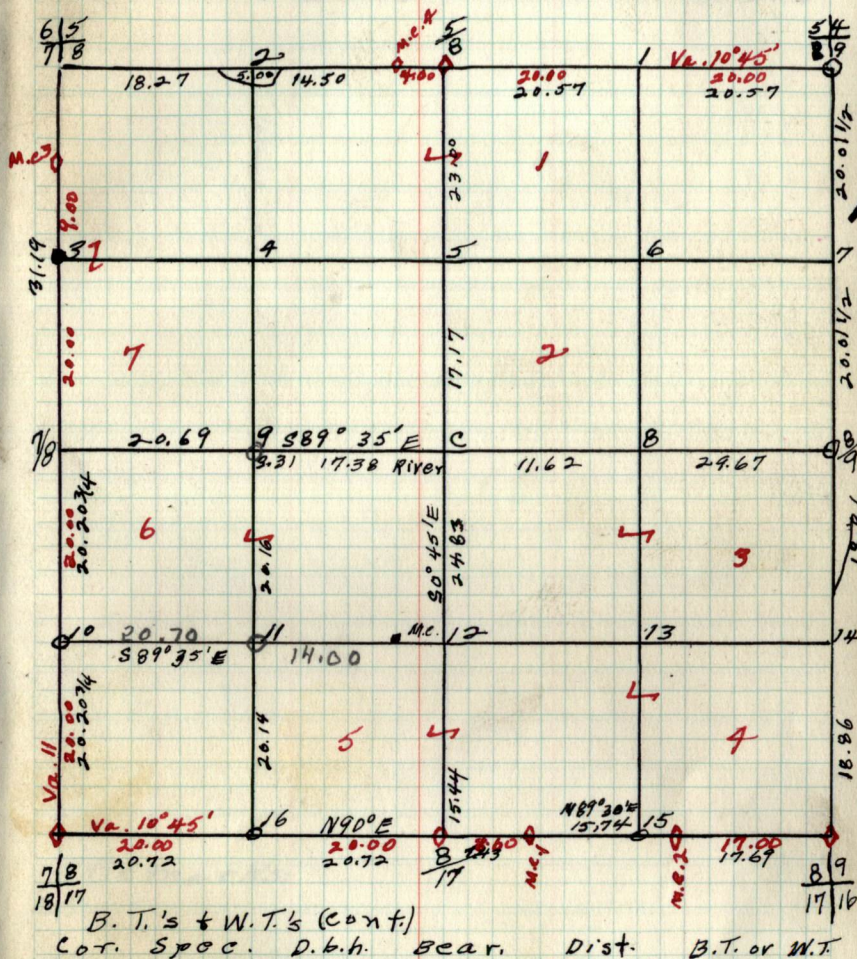
Cor.	Spec.	D.b.h.	Bear.	Dist.	
5/4 8/9					
5/8	Tam.	8	S 85 E	5.40	
6/5 7/8	X				
7/8	J. Pine	10	N 40 E	.08	
	N. Pine	18	S 41 W	.52	
7/8	J. Pine	8	S 65 E	.78	
18/17	J. Pine	5	S 1 W	.64	
	J. Pine	8	N 54 W	.64	
8/17	N. Pine	12	S 12 E	.33	
	Tam.	6	N 47 E	.31	
8/9	N. Pine	24	N 35 W	.33 21.8	
17/16	N. Pine	24	N 17 E	.41 48.3	
	Spruce	24	S 69 E	.30 19.9	
	W. Pine	24	S 56 W	.39 25.7	
8/9	M.C.1	Tam.	8	S 61 W	1.38
	M.C.2	Oak	12	N 64 E	2.20
	M.C.3	Oak	12	N 77 E	2.93
	M.C.4	Willow	5	S 61 W	.31
		No Trees			

B.T.'s Found & W.T.'s Set

Cor.	Spec.	D.b.h.	Bear.	Dist.	B.T.'s or W.T.
7/8	J. Pine	10	S 65 E	.78	
18/17	J. Pine	10	N 57 W	.64	
8/17	N. Pine stub	22	S 12 E	.33	
	Tam. Stump	10	N 47 E	.31	
8/9	White post on Road side				

Sec. 8 T. 147 N. R. 26 W.
by-

8



9

Chains

Notes

Chains

Type & Cultural Map

9

Remarks:

9. Original G.L.O. Corners.

Cor. Spec. D.b.h. Bear. Dist.

$\frac{43}{910}$
 $\frac{4}{9}$

$\frac{54}{819}$

$\frac{819}{1716}$

$\frac{9}{16}$

$\frac{910}{1615}$

$\frac{9}{10}$

$\frac{9}{10}$

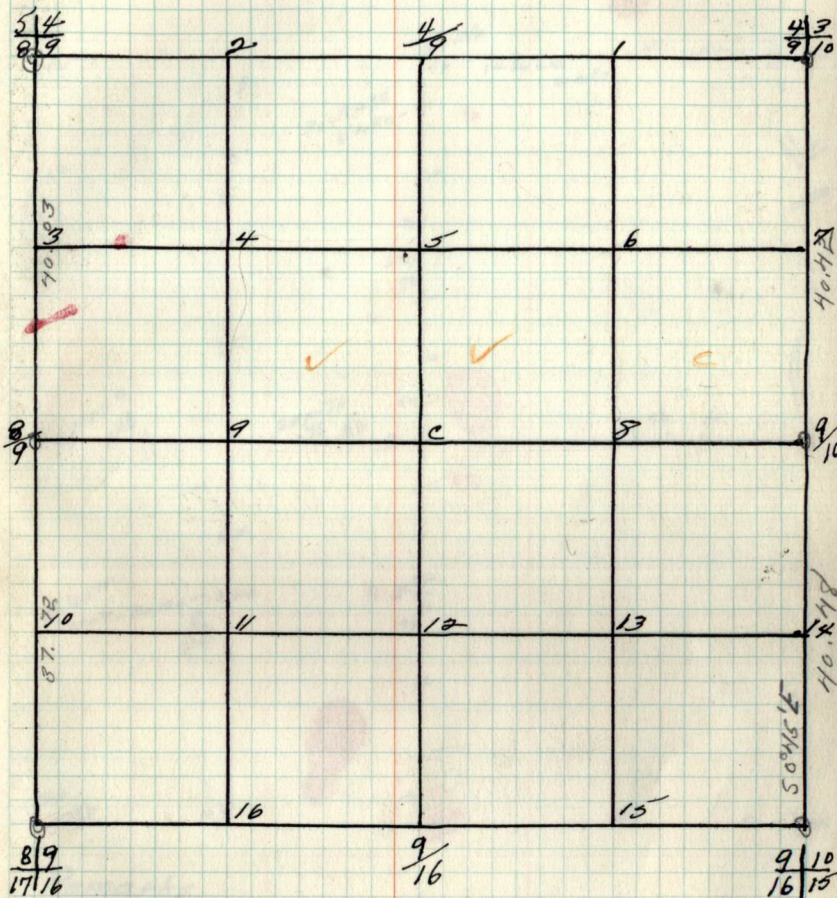
N. PINE	24	N 35 W	.33
N. PINE	26	N 17 E	.61
S. PINE	29	S 69 E	.30
W. PINE	24	S 36 W	.39

B.T.'s Found and W.T.'s Set.

Cor. Spec. D.b.h. Bear. Dist.

Sec. 9 T. 147 N. R. 26 W.

9



B.T.'s + W.T.'s (cont.)

Cor. Spec. D.b.h. Bear. Dist. B.T. or W.T.

10.

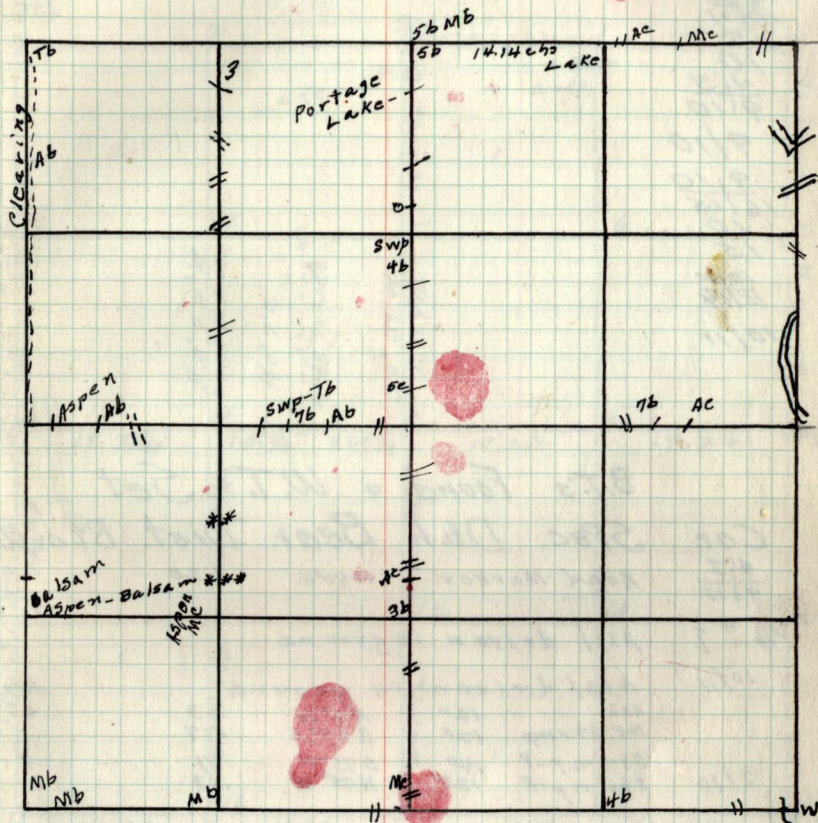
Chains

Notes

Chains

Type & Cultural map

10



Remarks

Lot 4 - Iron pipe 971' South of NEA of Lot 4

10 Original G.L.O. Corners

Cor. Spec. Dbh Bear. Dist.

$\frac{3}{10}$
 $\frac{4.3}{9/10}$
 $\frac{4.3}{9/10}$
 $\frac{9}{10}$
 $\frac{9}{10}$
 $\frac{16}{15}$
 $\frac{10}{15}$
 $\frac{10}{11}$
 $\frac{15}{14}$
 $\frac{10}{11}$

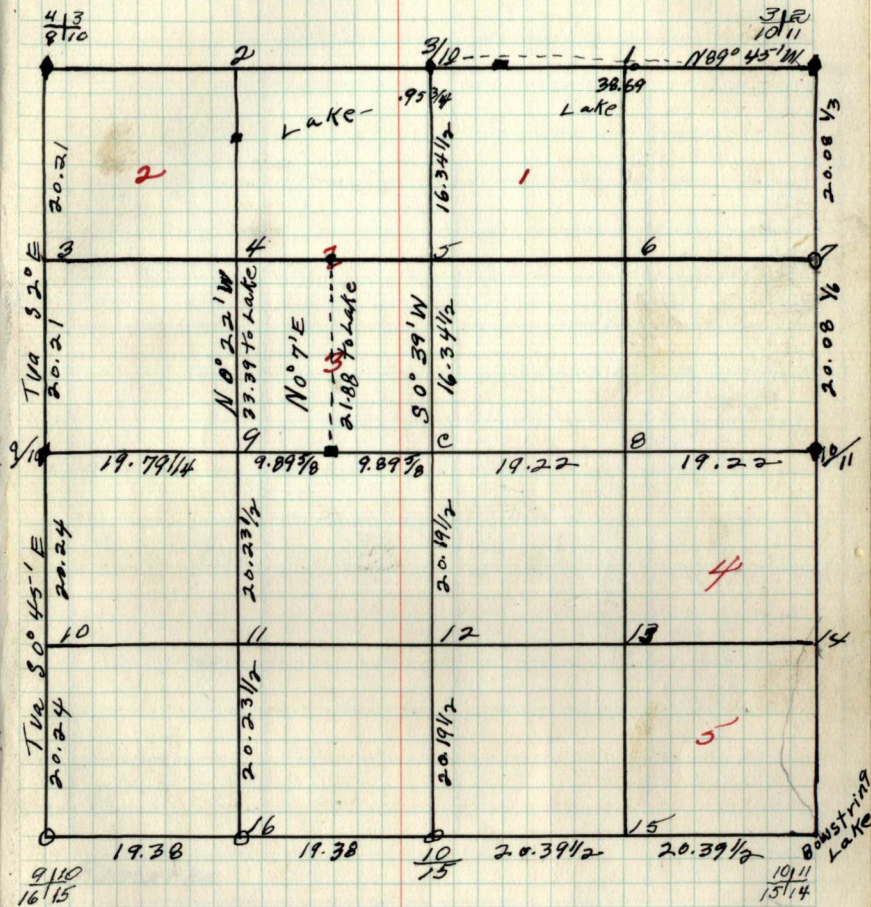
B.T.'s Found & W.T.'s Set

Cor. Spec. Dbh Bear. Dist. B.T. or W.T.

$\frac{4.3}{9/10}$ Road Marker N90°E .20
 $\frac{1}{6}$ # 7 Axel driven in ground
 $\frac{10}{11}$ Axel driven in ground
 Ash 12" N2°W .63
 N.P. Stump 12" S87°E .37
 Stump-P 14" S75°W .51
 Stump-P 12" N75°W .63

Sec. 10 T.147N. R.26W.

10



B.T.'s & W.T.'s (Cont.)
 Cor. Spec. Dbh. Bear. Dist. B.T. or W.T.'s

11

Notes

Chains

Chains

Type & Cultural Map

11

Remarks:

11

Cor.

Original G.L.O. Notes
Spec. D.b.h. Bear. Dist. $\frac{21}{11/12}$

X

 $\frac{2}{11}$ $\frac{3/2}{10/11}$

10/11

 $\frac{10}{15/14}$ $\frac{11}{14}$

X

 $\frac{11/12}{14/13}$

X

11/12

X

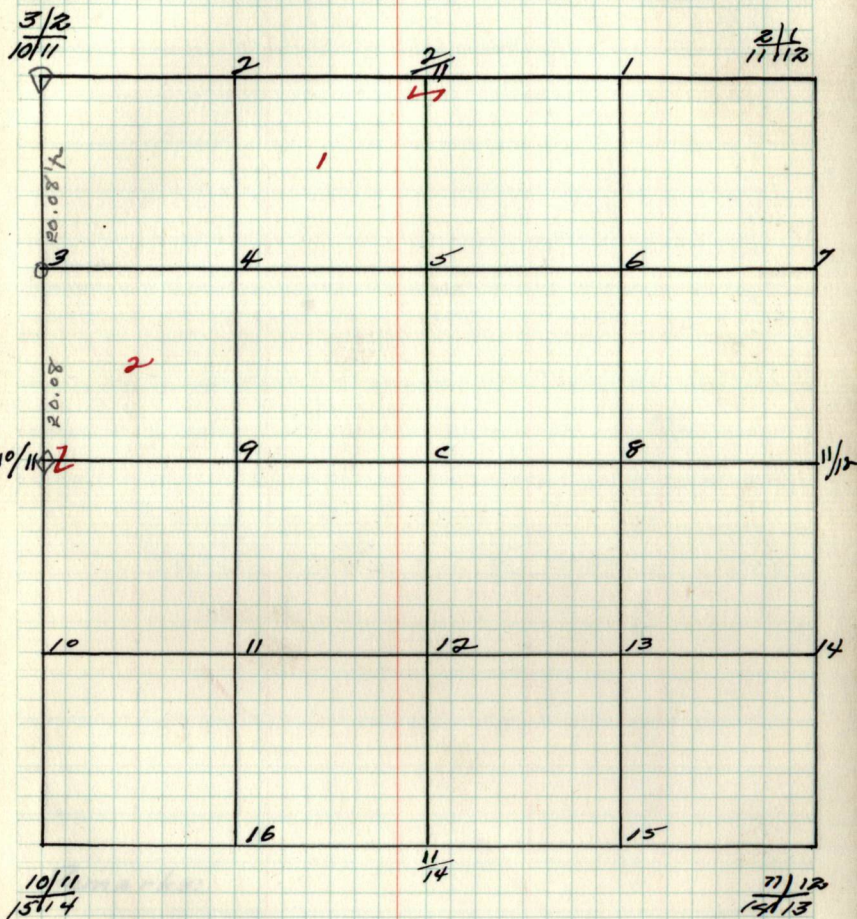
B.T.'s Found & W.T.'s Set

Cor.

Spec. D.b.h. Bear. Dist. B.T.'s or W.T.'s

Sec. 11 T. 147 N. R. 26 W.
by -

11



B.T.'s & W.T.'s (cont.)

Cor. Spec. D.b.h. Bear. Dist. B.T. or W.T.

12
Chains

Notes
Chains

Type & Cultural Map

12

Remarks:

12.

Original G.L.O. Corners

Cor. Spec. D.b.h. Bear Dist.

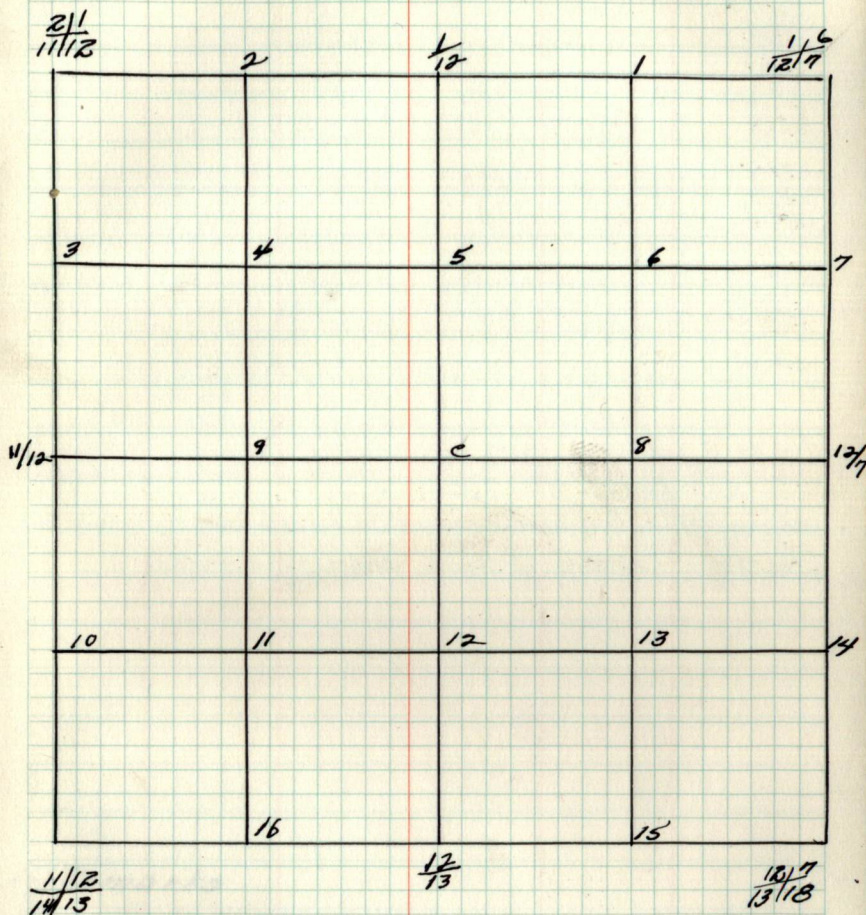
$\frac{1}{12}$	X
$\frac{2}{12}$	X
$\frac{3}{12}$	X
$\frac{4}{12}$	X
$\frac{5}{12}$	X
$\frac{6}{12}$	X
$\frac{7}{12}$	X
$\frac{8}{12}$	X
$\frac{9}{12}$	X
$\frac{10}{12}$	X
$\frac{11}{12}$	X
$\frac{12}{12}$	X

B.T.'s Found a W.T.'s Set

Cor. Spec. D.b.h. Bear. Dist

Sec. 12 T. 147 N. R. 26 W.

12



B.T.'s a W.T.'s (Cont.)
 Cor. Spec. D.b.h. Bear. Dist. B.T. or W.T.

Chains

Notes

Chains

Type + Cultural Map

Remarks

13.

Original G.L.O. Corners

Cor. Spec. D.b.h. Bear. Dist.

 $\frac{12}{13} / \frac{12}{13}$ X $\frac{12}{13}$ X $\frac{11}{12} / \frac{14}{13}$ X

14/13 X

 $\frac{14}{13} / \frac{23}{24}$ X $\frac{13}{24}$ X $\frac{13}{18} / \frac{24}{19}$ X

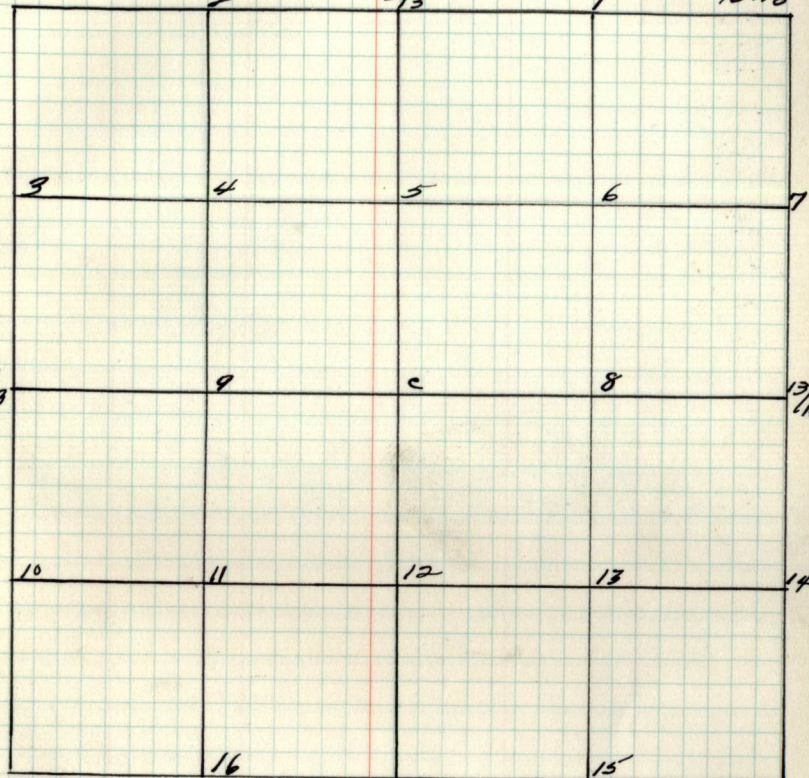
13/18 X

B.T.'s Found & W.T.'s Set

Cor. Spec. D.b.h. Bear. Dist.

Sec. 13 T. 147 N. R. 26 W.
64-

13

 $\frac{11}{12} / \frac{14}{13}$ $\frac{12}{13}$ $\frac{12}{12} / \frac{13}{18}$  $\frac{14}{13}$ $\frac{13}{18}$ $\frac{14}{13} / \frac{23}{24}$ $\frac{13}{24}$ $\frac{13}{18} / \frac{24}{19}$ B.T.'s + W.T.'s (cont.)

Cor. Spec. D.b.h. Bear. Dist. B.T. or W.T.

14

Chains

Notes

Chains

Type & Cultural Map

14

Remarks:

14

Original G.L.O. Corners

Cor. Spec. Dbh. Bear. Dist.

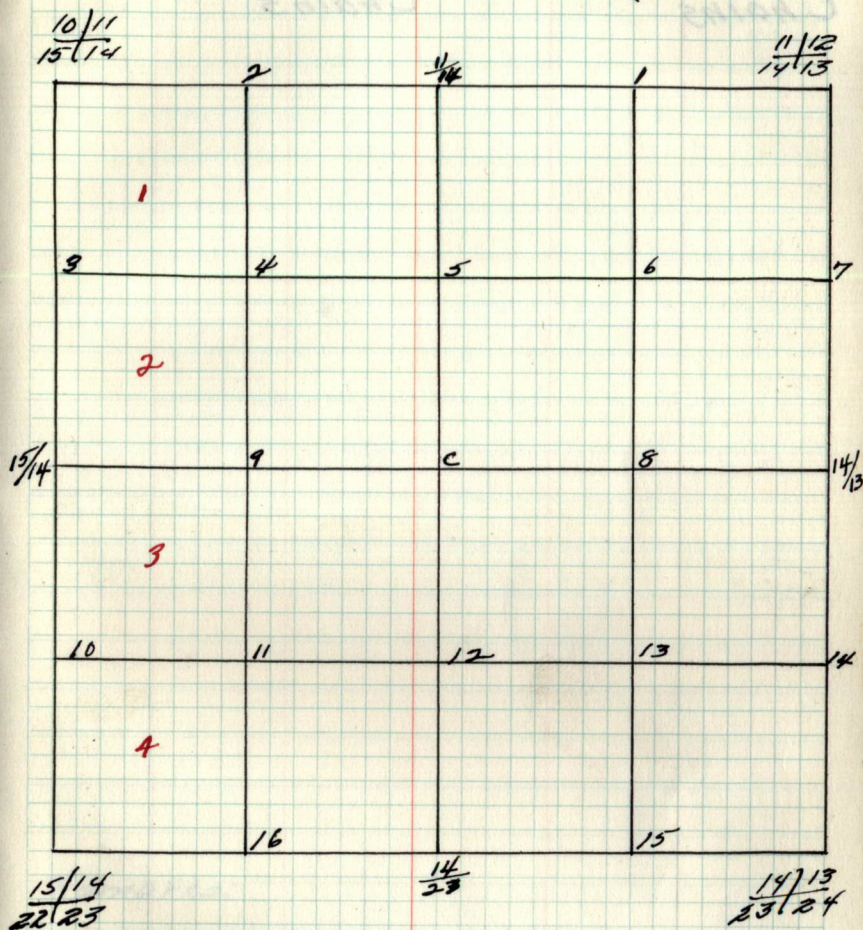
11/12	X
14/13	X
11	X
14	
10/11	
13/14	
15/14	
15/14	
15/14	
22/23	
14	X
23	X
14/13	X
23/24	X
14/13	X

B.T.'s Found & W.T.'s Set

Cor. Spec. Dbh. Bear. Dist. B.T. or W.T.

Sec. 14 T.147 N. R.26 W.

14



B.T.'s & W.T.'s (cont.)
Cor. Spec. Dbh. Bear. Dist. B.T.'s or W.T.'s

Notes
Chains

Chains

Type & Cultural map

Remarks:

15

Original G.L.O. Corners
Cor. Spec. Db.h. Bear Dist

10/11
~~15/14~~
10/15

9/10
~~16/15~~

16/15

16/15
~~21/22~~

15/22

15/14

~~22/23~~

15/14

X

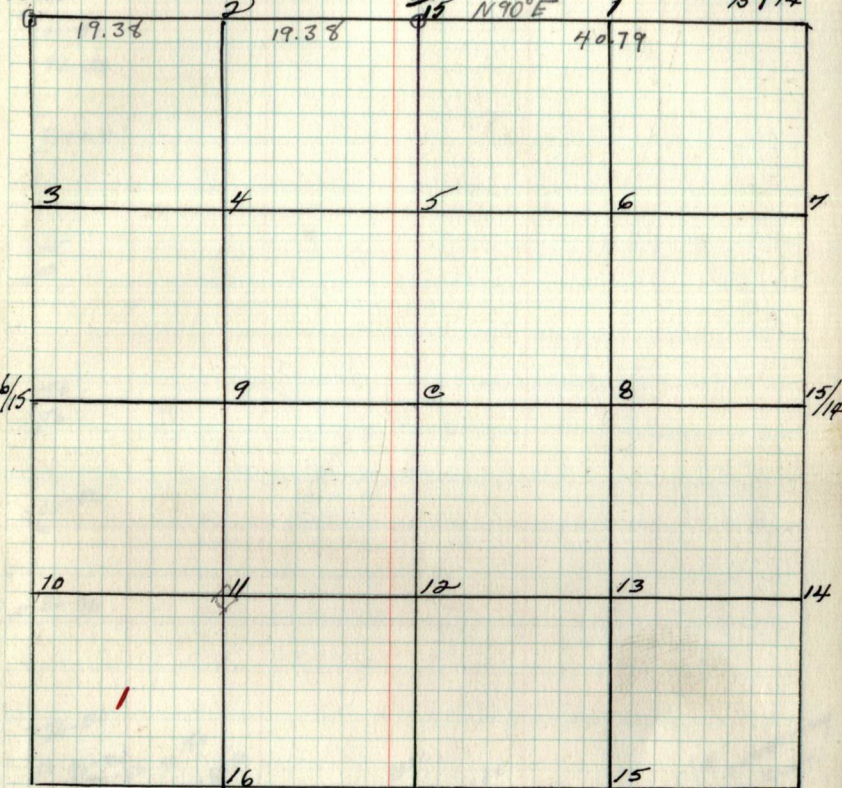
B.T.'s Found & W.T.'s Set

Cor. Spec. Db.h. Bear Dist B.T. or W.T.'s

Sec. 15 T. 147 N. R. 26 W.
by -

15

9/10
~~16/15~~



16/15
~~21/22~~

15/22

15/14
~~22/23~~

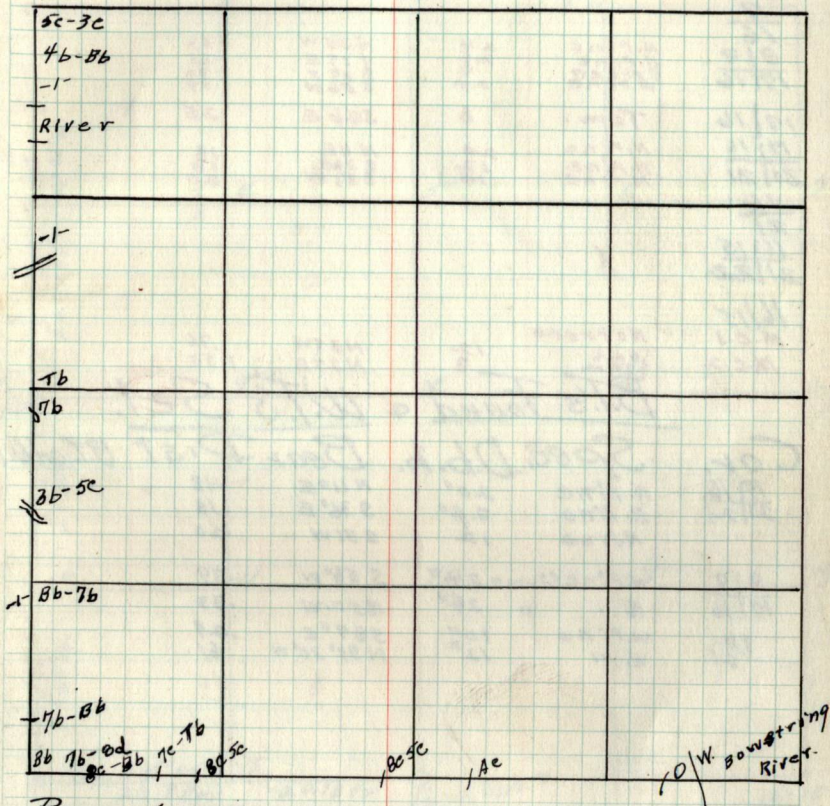
B.T.'s & W.T.'s (cont.)
Cor. Spec. Db.h. Bear Dist B.T. or W.T.

16.
Chains

Notes
Chains

Type & Cultural Map

16



Remarks:

16.

Original G.L.O. Corn.
Spec. D.b.h. Bear Dist

Cor.
9/10
16/15
9
8/9
17/16
17/16
20/21
16
21
16/15
21/22

N. Pine	24	N 35° W	.33
N. Pine	20	N 17° E	.61
S. Pine	24	S 64° E	.30
W. Pine	24	S 56° W	.39
Tam.	6	S 46° E	.25
N. Pine	20	N 11° E	.18
N. Pine	12	S 36° E	.10
N. Pine	14	S 31° W	.20

16/15
M.C.1
M.C.2

Not trees
Oak
Tam. 12
8
N 35° W .76
N 25° E 1.50

B.T.'s Found & W.T.'s Set.

Cor.	Spec.	D.b.h.	Bear	Dist.	B.T. or W.T.
17/16	N. Pine	20"	N 110° E	.18	
20/21	N. Pine	24"	S 36° E	.18	
	N. Pine	12	S 31° W	.20	
8/9	W. Pine Stump	24"	S 58° W	.39	
17/16	N. "	24"	N 52° W	.33	
16/21	W. Pine	10"	S 87° E	.29	
	W. "	12"	N 33° 30' W	.61	

66

266

266

4636

529

66

174

174

19.54

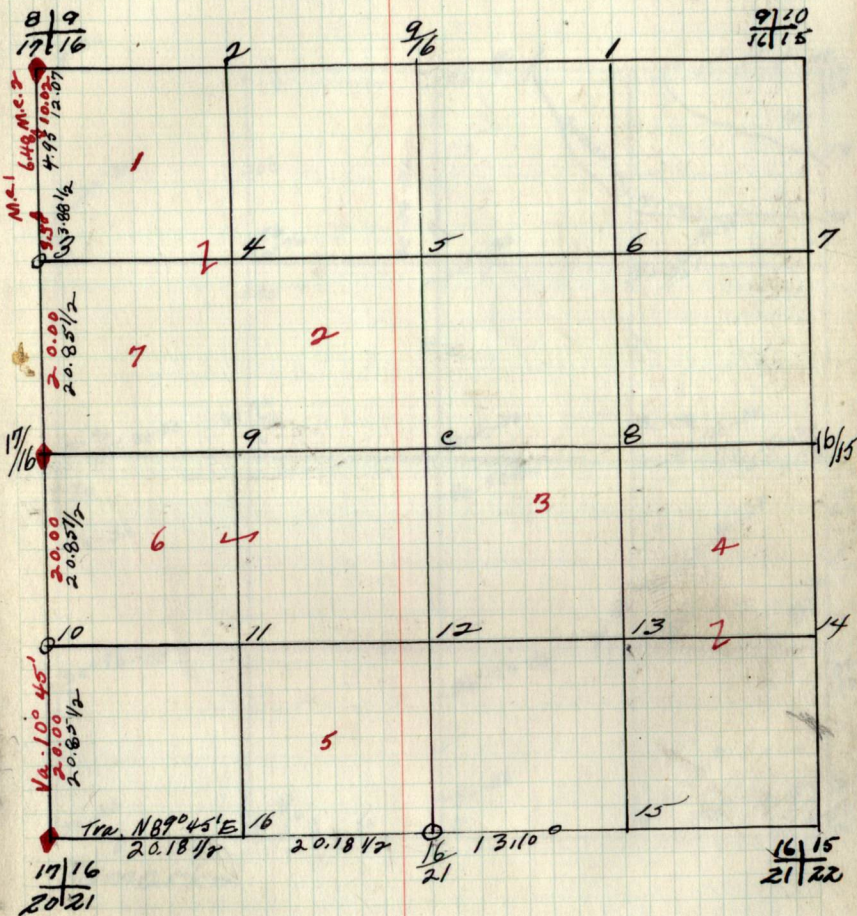
36

18

4

Sec. 16 T. 147 N. R. 26 W.
BY -

16



B.T.'s & W.T.'s (cont)
Cor. Spec. D.b.h. Bear. Dist. B.T. or W.T.

17 Original G.L.O. Corners.

Cor.	Spec.	D.b.h.	Bear.	Dist.
8/9	W. Pine	24	N 25 W	.33
17/16	W. Pine	24	N 17 E	.36
	Spruce	24	S 45 W	.39
	W. Pine	24	S 56 W	.39
8/7	N. Pine	12	S 12 E	.33
	Tam.	6	N 47 E	.31
7/8	J. Pine	8	S 65 E	.78
18/17	J. Pine	3	N 1 W	.64
	J. Pine	3	N 39 W	.64
18/17	J. Pine	6	N 48 W	.18
	Aspen	5	S 36 E	.29
18/17	Tam.	8	N 58 E	.09
19/20	Cedar	8	S 48 E	.12
	Spruce	10	N 40 W	.11
17	J. Pine	10	S 58 W	.10
20	J. Pine	10	N 35 W	.10
17/16	N. Pine	20	N 11 E	.18
20/21	N. Pine	12	S 31 E	.20
	N. Pine	14	S 31 W	.20
17/16	Tam.	6	S 46 E	.25
M.C.1	No Trees			
M.C.2	Coak	12	N 35 W	.16
*	Tam.	8	N 25 E	.50

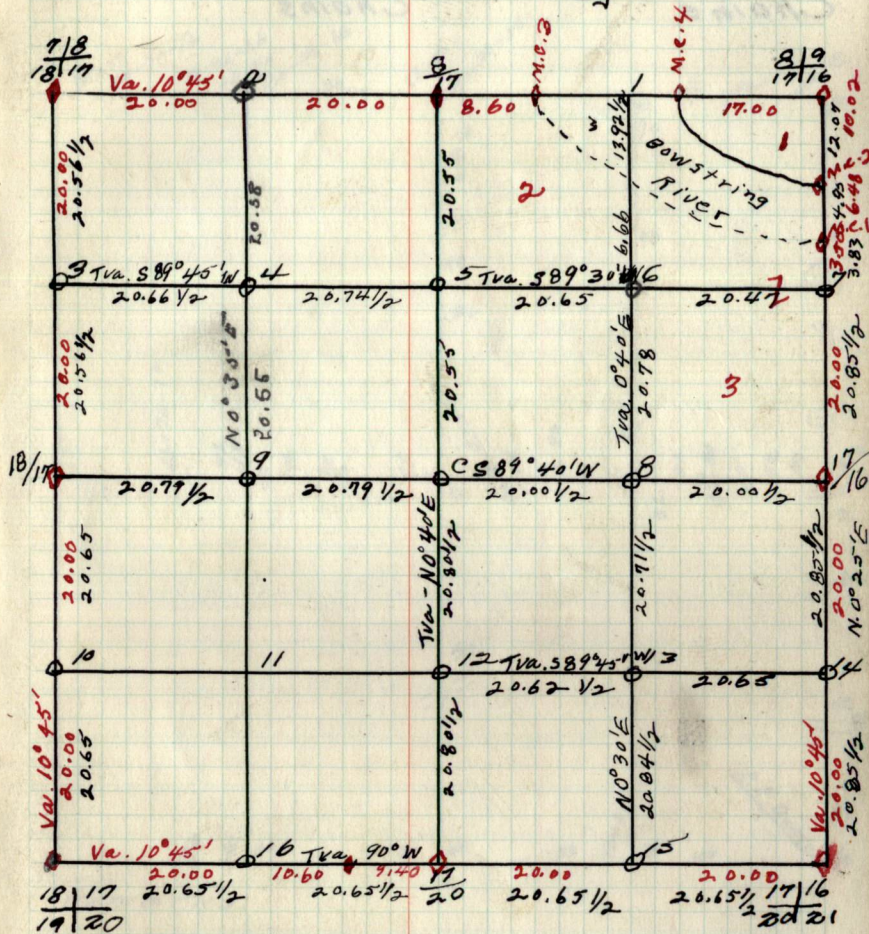
B.T.'s Found & W.T.'s Set.

Cor	Spec.	D.b.h.	Bear	Dist.	B.T. or W.T.
18/17	Cedar	6"	S 48° E	.12	
19/20	Tam. stub	Hole	N 58° E	.9	
	Spruce "	"	N 40° W	.11	
	" "	"	S 22° W	.12	
7/8	J. Pine	10"	S 60° E	.78	
18/17	J. Pine	10"	N 57° W	.64	
17/16	N. Pines	20"	N 11° E	.18	
20/21	N. .. stump	24"	S 36° E	.18	
	N. Pine	24"	S 31° W	.20	
8/9	W. Pine stump	24"	S 56° W	.39	
17/16	N. Pine stump	24"	N 57° W	.33	
18/17	J. Pine	10"	N 48° W	.18	
	Aspen	14"	S 36° E	.33	
8/17	Stub	22"	S 12° E	.33	
	N. Pine	10"	N 47° E	.31	
C 1/4	Birch	6"	S 84° W	.20	

M.C.3	Tam.	8	S 61 W	1.38
M.C.4	Coak	12	N 64 E	2.20
	Coak	12	N 77 E	2.93

Sec. 17 T. 147 N. R. 26 W.

17



B.T.'s & W.T.'s (cont.)
Cor Spec. Bbh. Bear Dist. B.T. or W.T.

4/18	5/29
66	66
108	174
108	174
11.55	19.14
9	

18

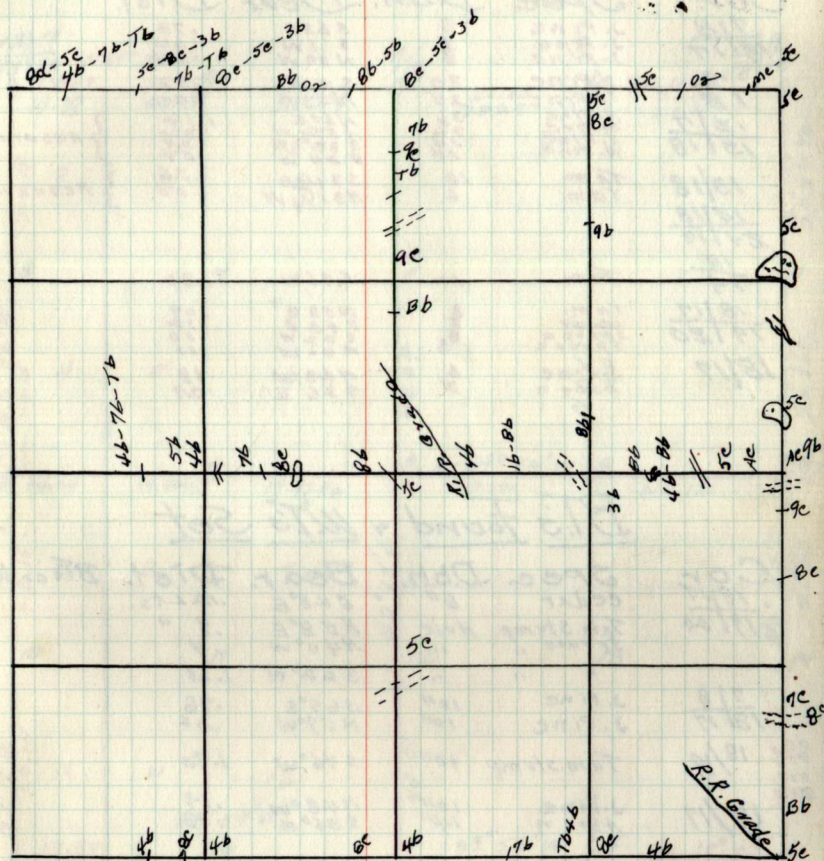
Chains

Notes

Chains

Type & Cultural map

18



Remarks:

18 Original G.L.O. Corners.

Cor.	Spec.	Dbh.	Bear	Dist.
7/18	J. Pine	8	S 65 E	.78
18/17	J. Pine	8	S 1 W	.64
	J. Pine	8	N 59 W	.64
7/18	N. Pine	30	S 5 W	.92
12/7	N. Pine	20	N 48 W	.42
15/18	N. Pine	36	N 60 E	1.14
	J. Pine	30	S 71 W	.33
	W. Pine	14	S 82 E	.54
	W. Pine	14	S 24 W	.54
13/18	Tam.	18	S 31 E	.26
15/18	Tam.	6	N 31 1/4 W	.50
18/19	Tam.	10	S 46 W	1.80
18/19	Tam.	8	N 58 E	.09
19/20	Cedar	8	S 48 E	.10
19/20	Spruce	8	S 22 W	.10
18/17	J. Pine	6	N 48 W	.18
	Aspen	5	S 36 E	.29

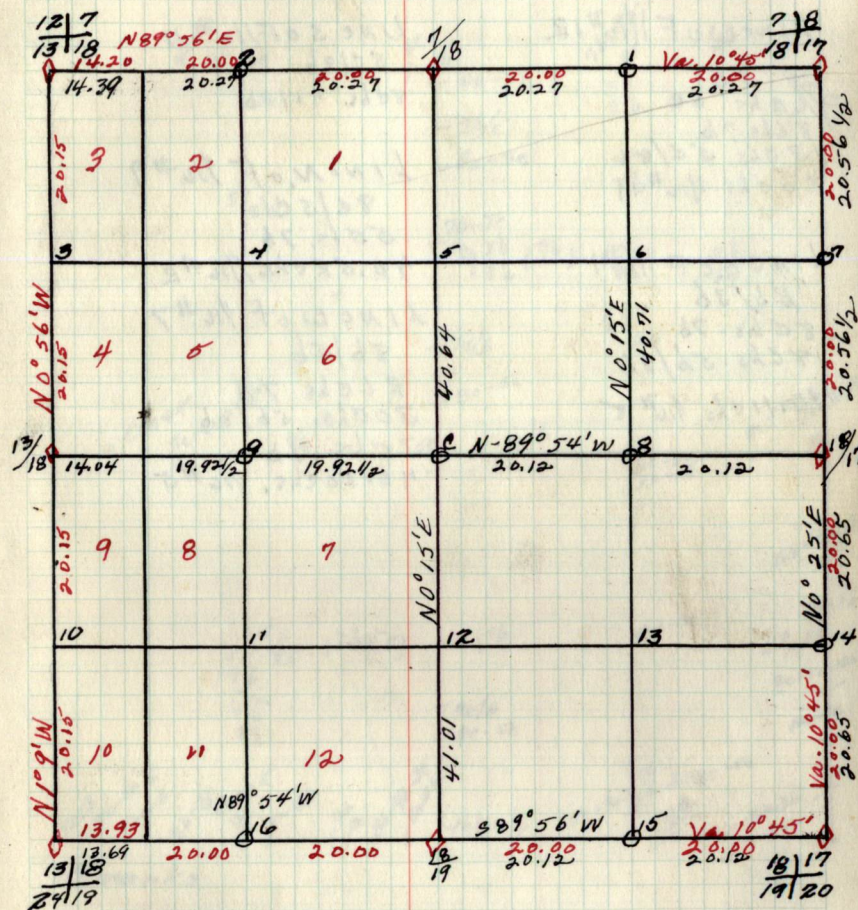
Resurvey
Resurvey

BT's Found & WT's Set.

Cor.	Spec.	Dbh.	Bear.	Dist.	BT's or WT's
18/17	Cedar	6"	S 48 E	.12	Lts.
19/20	Tam. Stump	Hole	N 58 E	.9	"
	Spruce	"	N 40 W	.11	"
	"	"	S 22 W	1.21	"
7/18	J. Pine	10"	S 65 E	.78	
18/17	J. Pine	10"	N 57 W	.64	
18/19	Tam. stump	10"	S 46 W	1.80	
18/17	J. Pine	10"	N 48 W	.19	
	Aspen	14"	S 36 E	.33	

Sec. 18 T.147 N. R.26 W.
by -

18



BT's or WT's (cont.)
Cor. Spec. Dbh. Bear Dist. BT's or WT's

19. Original G.L.O. Corners.

Cor.	Spec.	D.b.h.	Bear.	Dist.
18/17	Tam.	8	N58E	.09
19/20	Cedar	8	S48E	.12
18/19	Spruce	8	S22W	.17
19/20	Tam.	10	S46W	1.80
13/18				
24/19				
24/19				
25/30				
19/20	Tam.	8	S34W	1.40
30/29	J. Pine	10	N50W	.86
19/20	Balsam	6	N85W	3.75
30/29	N. Pine	14	S86W	8.10
19/20	Balsam	10	S76E	.18
30/29	N. Pine	20	S45W	.12

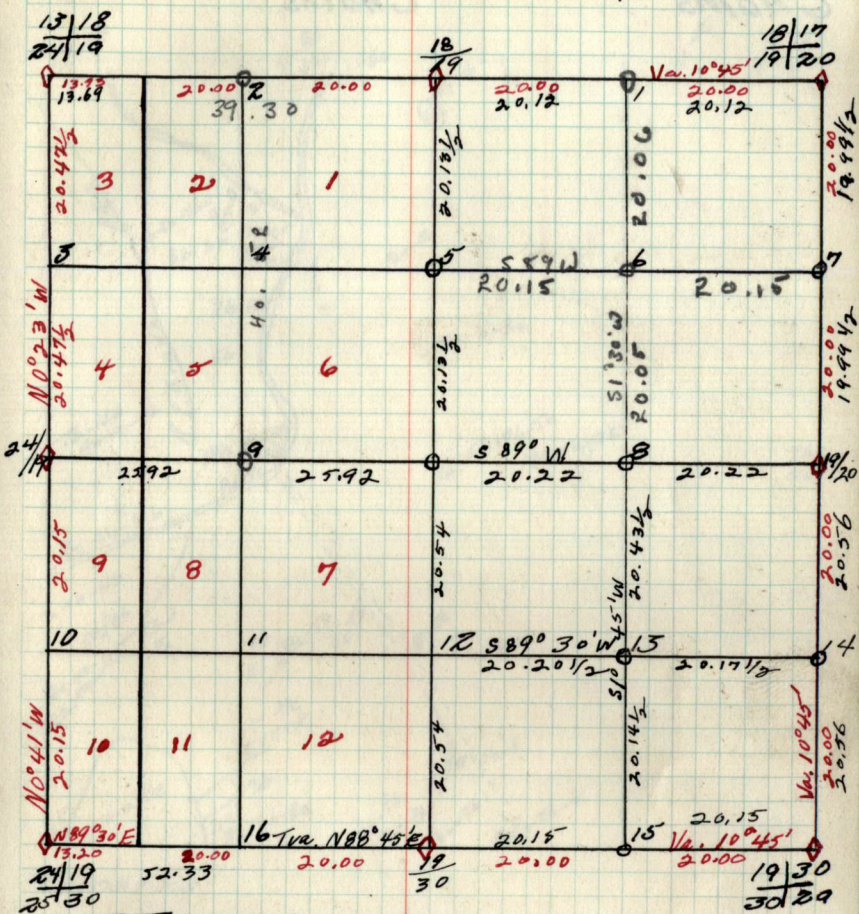
B.T.'s Found & W.T.'s Set.

Cor.	Spec.	D.b.h.	Bear.	Dist.	
18/17	Cedar	6"	S48°E	.17	
19/20	Stump Hole		N40°W	.11	
	" "		N88°W	.9	
	" "		S22°W	.12	
19/20	N. Pine D.	24"	S86°W	8.10	
30/29	Tam. stump	10"	S46°W	1.80	
18/19	N. Pine	28	S75°W	12	B.T. w.t.
19-20	J. Pine	10	S69°E	68	w.t.
1/16 #8	J. Pine	8"	S14°W	.20	w.t.
1/16 #14	J. Pine	16	S17°E	7	w.t.
1/16 #12	Spruce	6"	S29°W	5	w.t.
1/16 #11	J. Pine	10	N47°E	20	w.t.
1/16 #15	Balsam	10	N69°E	11	w.t.
C/4	Spruce	5"	S99°W	3	w.t.
1/16 #9	N. Pine	10	N8°E	11	w.t.

Sec 19 T. 147 N. R. 26 W.

19

by Fiederle



B.T.'s & W.T.'s (cont.)

Cor.	Spec.	D.b.h.	Bear.	Dist.	B.T. or W.T.
1/16 #12	J. Pine	12	N77°E	29	w.t.
18-19	Birch	5	S53°W	12	w.t.
	N. Pine	14	N4°E	57	w.t.
1/16 #1	Birch	6	S4°W	7	w.t.
1/16 #7	Balsam	4	West	2	w.t.
1/16 #6	J. Pine	6	N46°E	12	w.t.

20

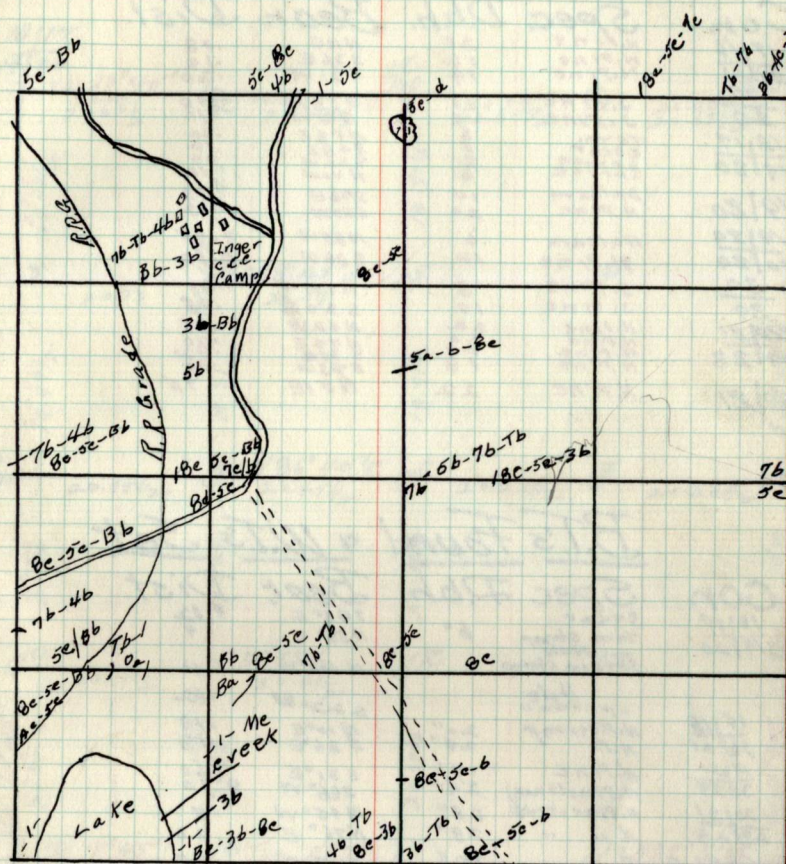
Chains

Notes

Chains.

Typed Cultural map

20



Remarks:

80 Original G.L.O. Corners.

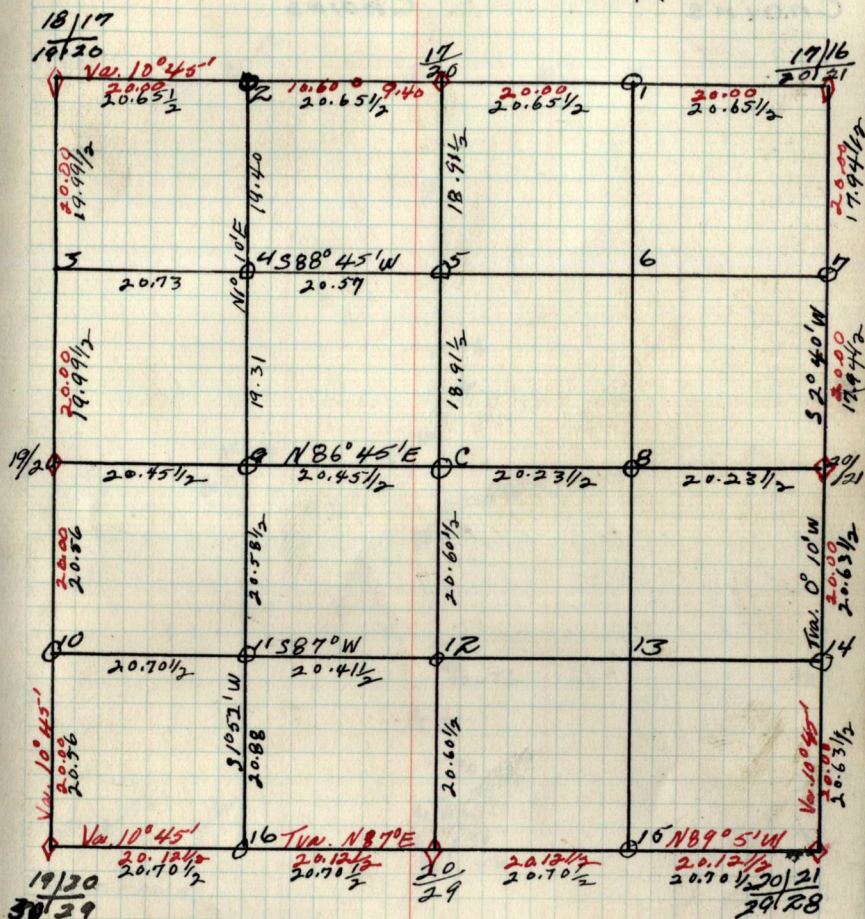
Cor.	Spec.	D.b.h.	Beat.	Dist.
17/16	N.P. Pine	20	N1E	.18
20/21	N.P. Pine	12	S3E	.18
17	N.P. Pine	14	S31W	.20
30	J. Pine	10	S58W	.10
18/17	J. Pine	10	N36W	.10
19/20	Tam.	8	N58E	.04
	Cedar	5	S48E	.12
	Spruce	5	N22W	.10
		8	N40W	.11
19/20	Balsam	10	S76E	.18
19/20	N.P. Pine	20	S45W	.12
30/29	Balsam	6	N85W	3.75
20	N.P. Pine	14	S86W	8.10
29	J. Pine	8	N42W	1.00
20/21	J. Pine	10	S20E	.45
29/28	N.P. Pine	22	N42W	.05
	N.P. Pine	20	N74E	.30
	N.P. Pine	20	S3E	.42
	N.P. Pine	20	S45W	.40
20/21	N.P. Pine	22	N51E	.75

B.T.'s Found & W.T.'s Set

Cor.	Spec.	D.b.h.	Beat.	Dist.
18/17	Cedar		S48°E	.12
19/20	Tam. Stump	6"	N58°E	.9
	Hole		N40°W	.11
	Spruce Stump			
	Hole			
17/16	Spruce "		S220W	.62
20/21	N.P. Stump	20"	N10°E	.18
	N.P.	24"	S36°E	.18
19/20	N.P. Pine	4"	S31°E	.20
30/29	N.P. Pine (mag)	24"	S86°W	8.10
20/21	N.P. Pine stump	28"	N45°W	.5
29/28	N. " "	28"	N76°E	.30
Full m	N. " "	20"	S47°W	.40
	N.P. Pine	24"	S33°E	.40
20/21	N.P. Pine (fallen)	24"	N51°E	.75
19/20	N.P. Pine	28"	S45°W	.12

Sec. 20 T.147 N. R.26 W.

20

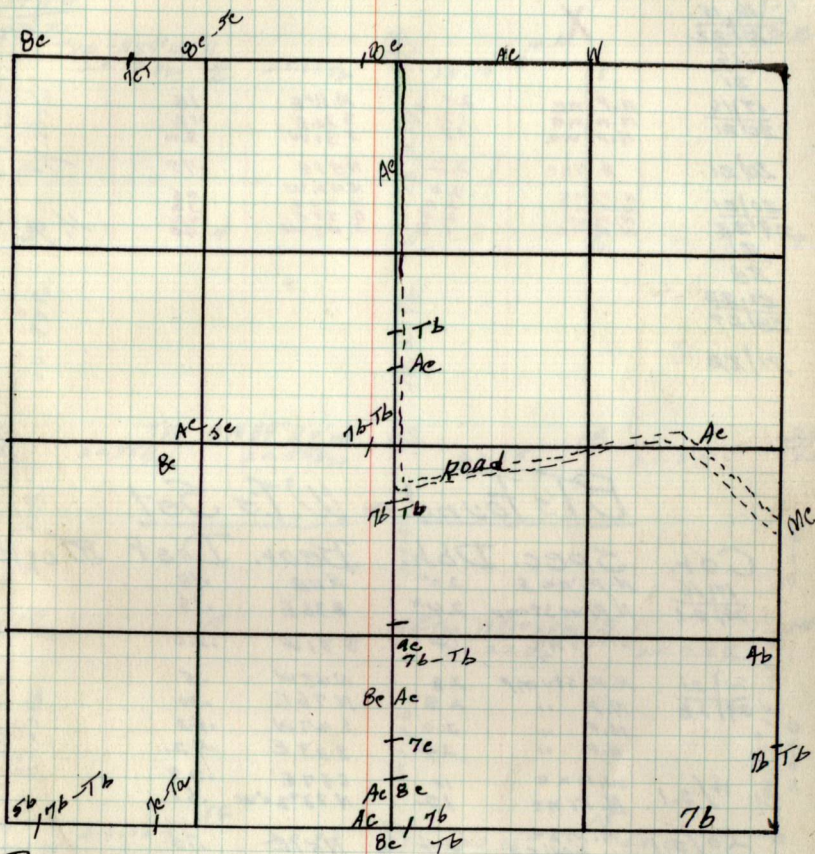


B.T.'s & W.T.'s (cont.)
 Cor. Spec. D.b.h. Beat. Dist. W.T. or B.T.

21.
Chains

Notes
Chains

Type & Cultural map 21



Remarks:

Original G.L.O. Corners

Cor. Spec. Dbh. Bear. Dist.

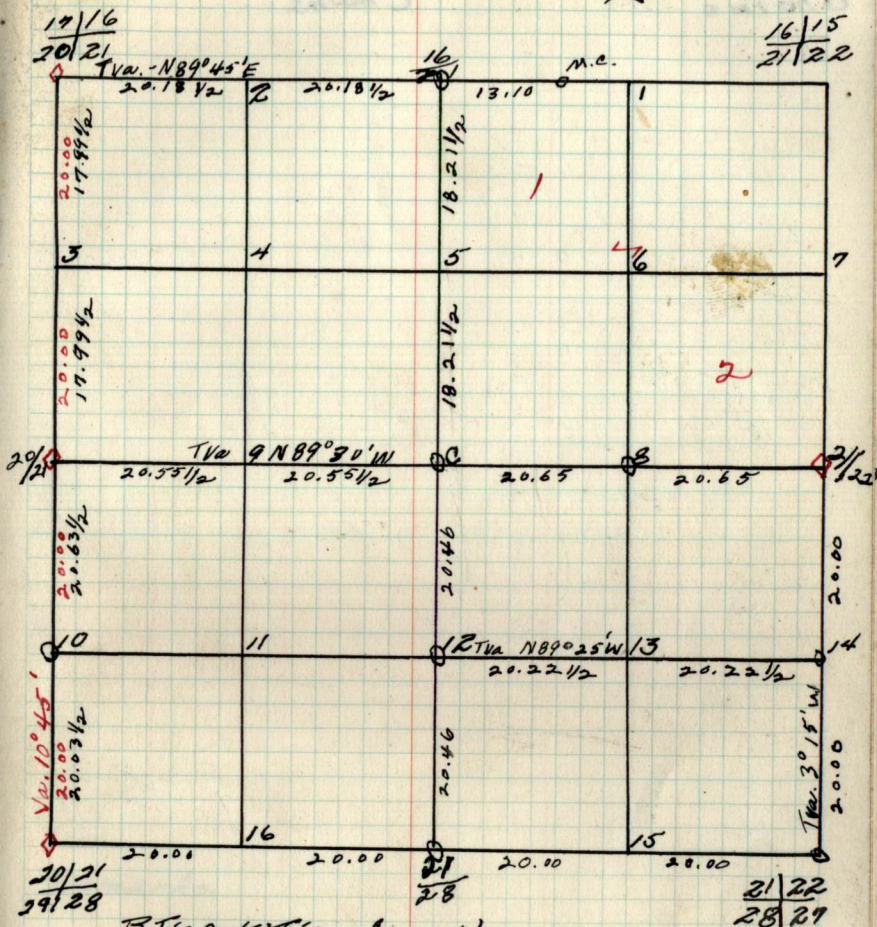
16/15 21/22	X			
16 21				
17/16 20/21	N. Pine N. Pine N. Pine	20 12 14	N. 11° E S 36° E S 31° W	.18 .18 .20
20/21	N. Pine	22	N 51° E	.75
20/21	N. Pine	20	N 42° W	.05
29/28	N. Pine	22	N 21° E	.30
21	N. Pine	21	S 25° W	.40
28				
21/22				
28/27				
21/22				

B.T.'s Found & W.T.'s Set

Cor.	Spec. Dbh.	Bear.	Dist	B.T. or W.T.
17/16 20/21	N. Pine S. N. Pine stump N. Pine	20" 24" 14"	N 11° E S 36° E S 31° W	.18 .18 .20
20/21	N.P. stump	28	N 45° W	.5
29/28	N.P. "	28	N 76° E	.30
	N.P. "	20	S 47° W	.40
	N.P. "	24	S 33° E	.42
16/21	W. Pine W. Pine	10 12	S 87° E N 33° 30' W	.29 .61
20/21	N. Pine Fallen	24	N 51° E	.75
21/22	B. Gillard Stump Hole	13	N 12° E S 45° W	.80 .31

Sec. 21 T. 147 N. R. 26 W.

21



B.T.'s & W.T.'s (cont)
Cor. Spec. Dbh. Bear. Dist. B.T. or W.T.

22.

Chains

Notes

Chains.

Type & Cultural map

22

Remarks.

22. Original G.L.O. Corners.

15/14
22/23

16/15
21/22

X

21/22

21/22

20/27

22/27

X

22/23

22/23

B.T.'s Found & W.T.'s Set

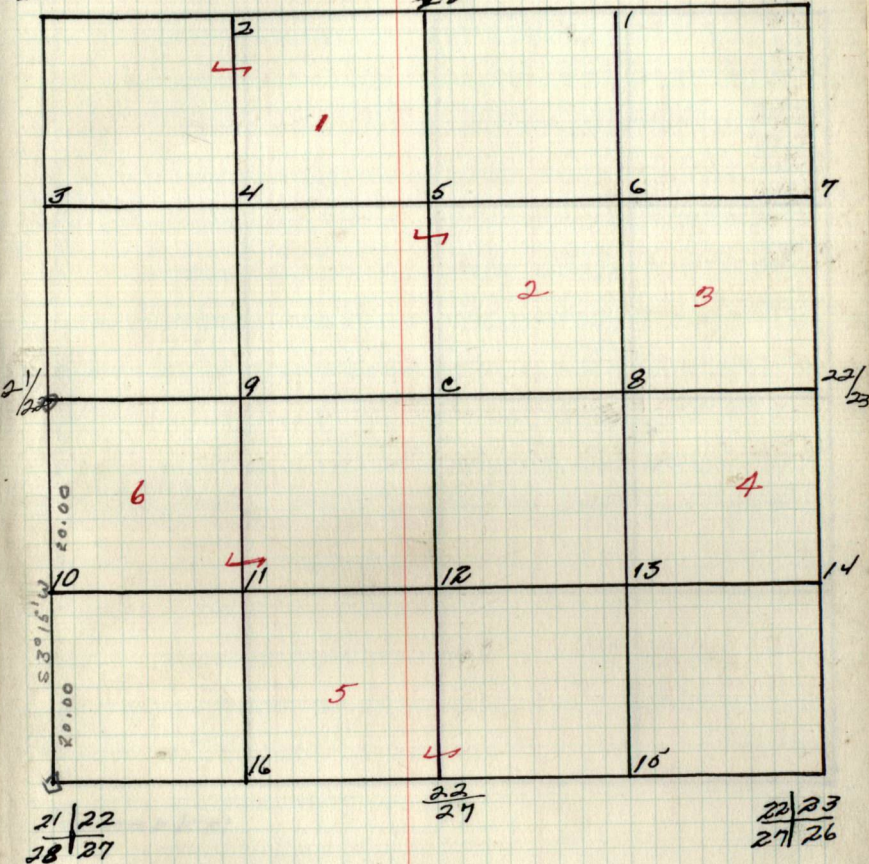
Cor. Spec. Dbh. Bear Dist. B.T. or W.T.

Sec. 22 T. 147 N. R. 26 W. 22
by -

16/15
21/22

15/22

15/24
22/23



B.T.'s & W.T.'s (cont.)
Cor. Spec. Dbh. Bear. Dist. B.T. or W.T.

23

Chains

Notes

Chains

Type & Cultural map

23

Remarks:

23 Original G.L.O. Corners.

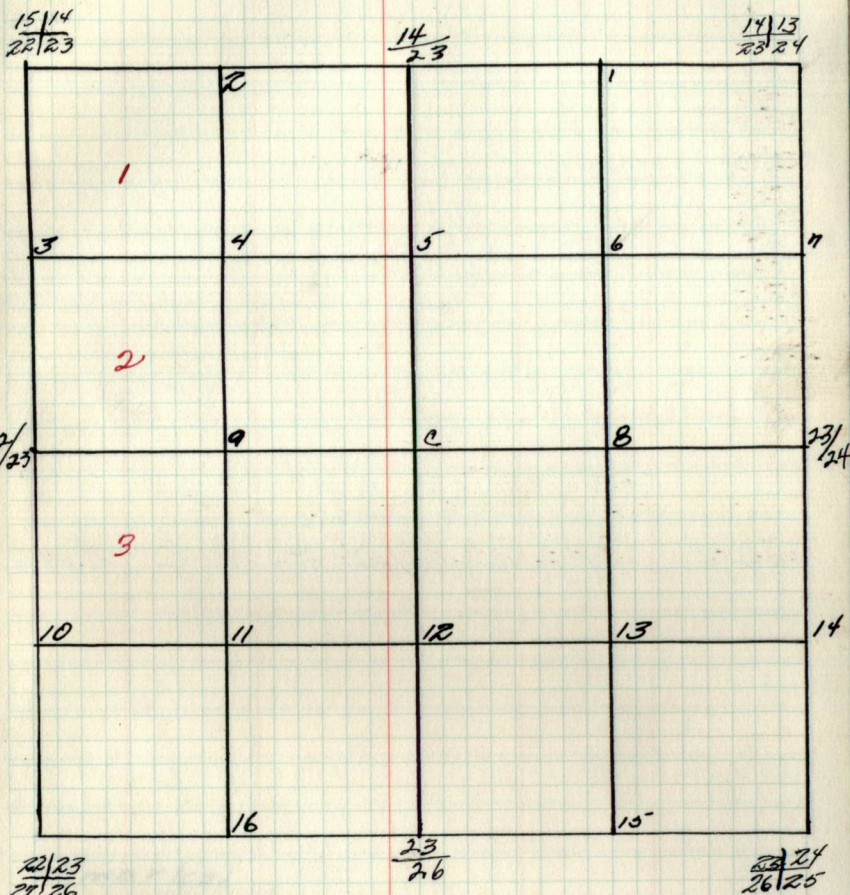
Cor. Spec. Dbh. Bear. Dist.

$\frac{14}{23}$	X
$\frac{14}{23}$	X
$\frac{15}{24}$	
$\frac{21}{23}$	
$\frac{22}{23}$	X
$\frac{23}{26}$	X
$\frac{23}{24}$	X
$\frac{23}{24}$	X

B.T.'s Found & W.T.'s Set.

Cor. Spec. Dbh. Bear. Dist. B.T. or W.T.

Sec 23 T. 147 N. R. 26 W. 23
by



B.T.'s & W.T.'s (cont.)
Cor. Spec. Dbh. Bear. Dist. B.T. or W.T.

24. Original G.L.O. Corners.

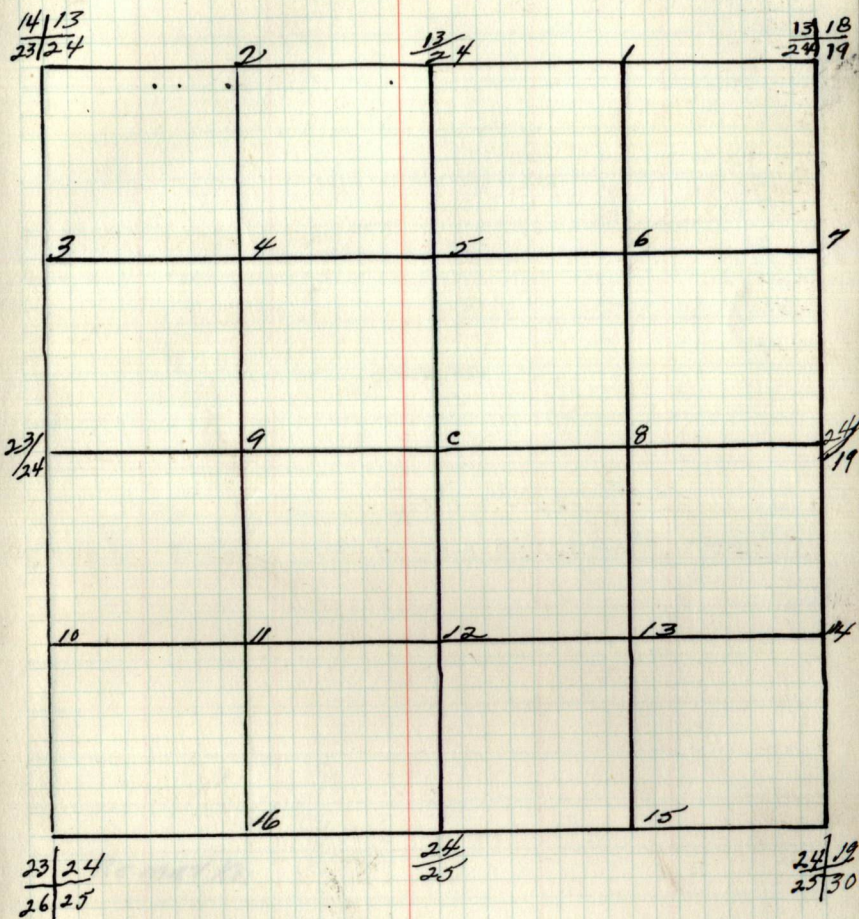
Cor.	Spec. D.b.h.	Bear. Dist.
$\frac{18}{24}$	X	
$\frac{13}{24}$	X	
$\frac{14}{23}$	X	
$\frac{23}{24}$	X	
$\frac{23}{24}$	X	
$\frac{23}{25}$	X	
$\frac{24}{25}$	X	
$\frac{24}{19}$	X	
$\frac{25}{30}$	X	
$\frac{24}{19}$	X	

B.T.'s Found & W.T.'s Set.

Cor. Spec. D.b.h. Bear. Dist. B.T. or W.T.

Sec. 24 T. 147 N. R. 26 W.
by-

24



B.T.'s & W.T.'s (Cont)
Cor. Spec. D.b.h. Bear. Dist. B.T. or W.T.

25.

Chains

Notes

Chains

Type & Cultural map

25

Remarks:

25. Original G.L.O. Corners

Cor.	Spec.	D.b.h.	Bear.	Dist.
$\frac{24}{25} \frac{19}{30}$	X			
$\frac{24}{25}$	X			
$\frac{23}{26} \frac{24}{25}$	X			
$\frac{26}{25}$	X			
$\frac{26}{35} \frac{25}{36}$	X			
$\frac{25}{36}$				
$\frac{25}{36} \frac{30}{31}$	X			
$\frac{25}{30}$	X			

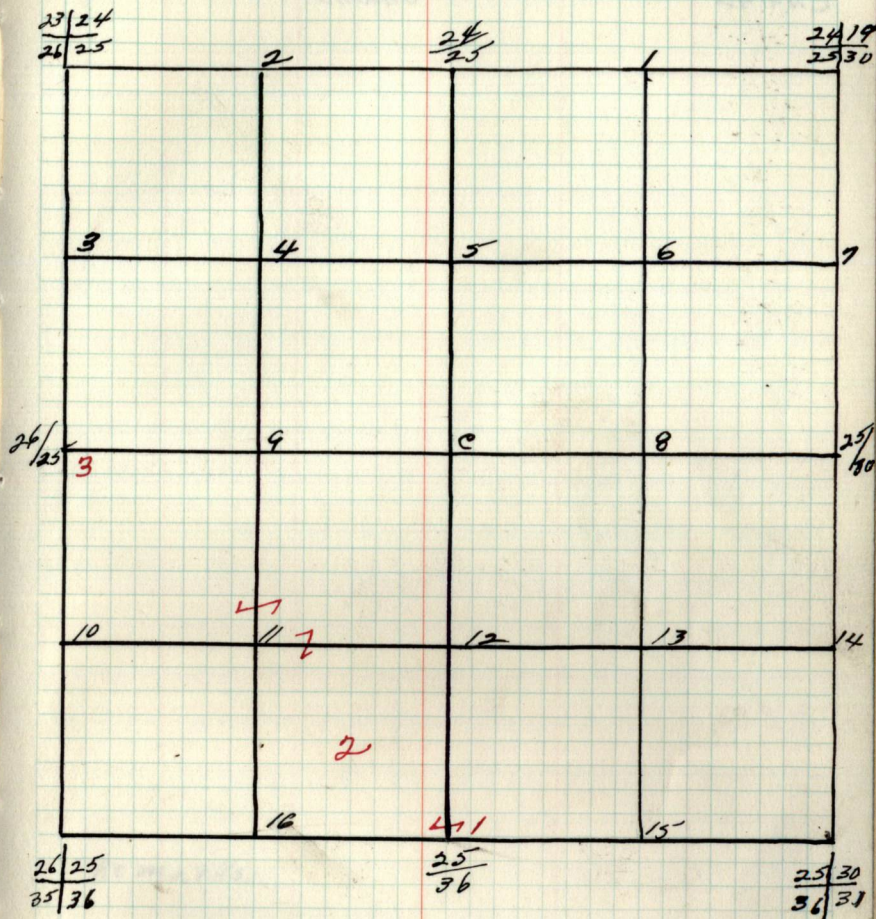
B.T.'s Found + W.T.'s set.

Cor. Spec. D.b.h. Bear. Dist. B.T. or W.T.

Sec. 25 T. 147 N. R. 26 W.

25

by -



B.T.'s + W.T.'s (cont.)

Cor. Spec. D.b.h. Bear. Dist. B.T. or W.T.

26.

Chains

Notes

Chains

Type & Cultural Map

26

Remarks:

26.

Original G.L.O. Corners

Cor. Spec. D.b.h. Bear. Dist.

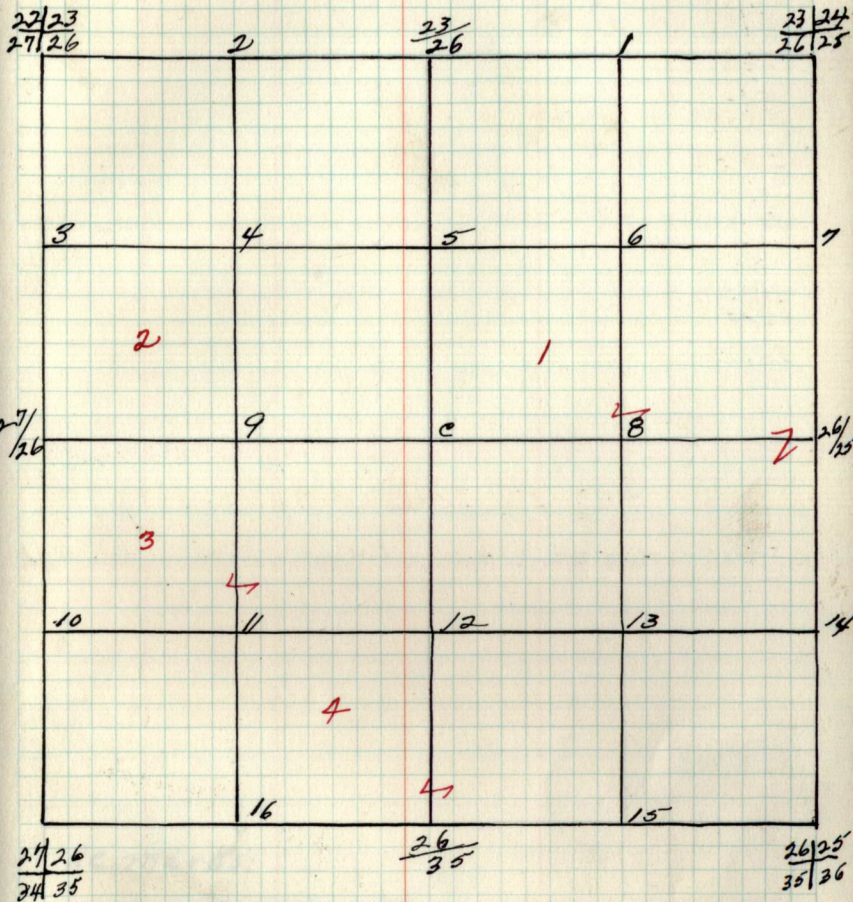
$\frac{23}{26}$	X
$\frac{26}{25}$	X
$\frac{23}{26}$	X
$\frac{22}{23}$	X
$\frac{27}{26}$	
$\frac{27}{26}$	
$\frac{27}{26}$	
$\frac{26}{35}$	
$\frac{26}{25}$	X
$\frac{35}{36}$	X
$\frac{26}{25}$	X

B.T.'s Found + W.T.'s Set

Cor. Spec. D.b.h. Bear. Dist. B.T. or W.T.

Sec. 26 T. 147 N. R. 26 W.

26



B.T.'s Found + W.T.'s (cont)
 Cor. Spec. D.b.h. Bear. Dist. B.T. or W.T.

27

Chains

Notes

Chains

Type 4 Cultural Map

27

Remarks:

Est.

Original C.L.O. Corners

Cor. Spec. D.b.h. Bear. Dist.

27/23
27/26

X

22/27

21/22
28/27

28/27

28/27
33/34

27/34

27/26
34/35

27/26

B.T.'s Found + W.T.'s Set.

Cov. Spec. D.b.h. Bear. Dist. B.T. or W.T.

Sec. 27 T. 147 N. R. 26 W.
by -

27

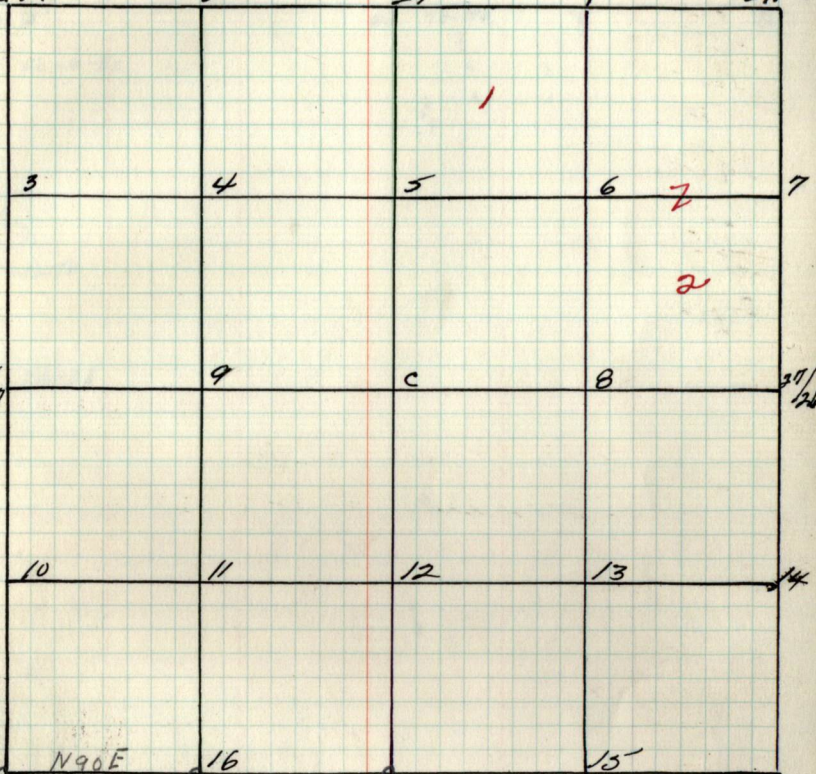
21/22
28/27

2

22/27

1

22/23
27/26



N90E
28/27 20.02
23/34

16
20.02

27/34

22/26
27/35

B.T.'s + W.T.'s (Cont.)
Cov. Spec. D.b.h. Bear. Dist. B.T. or W.T.

28

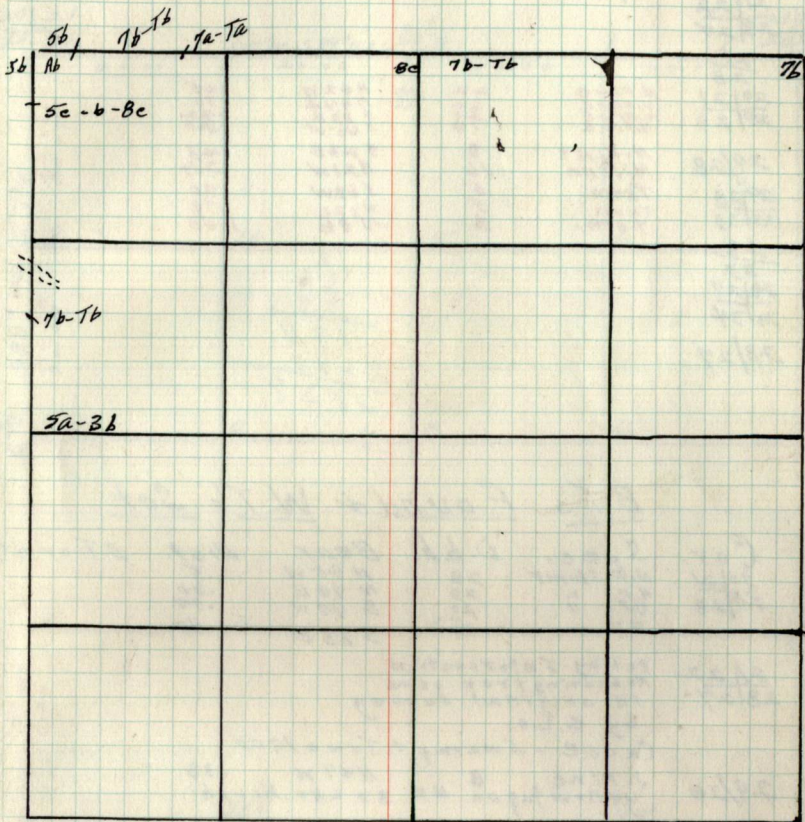
chains

Notes

chains

Type & Cultural map

28



Remarks:

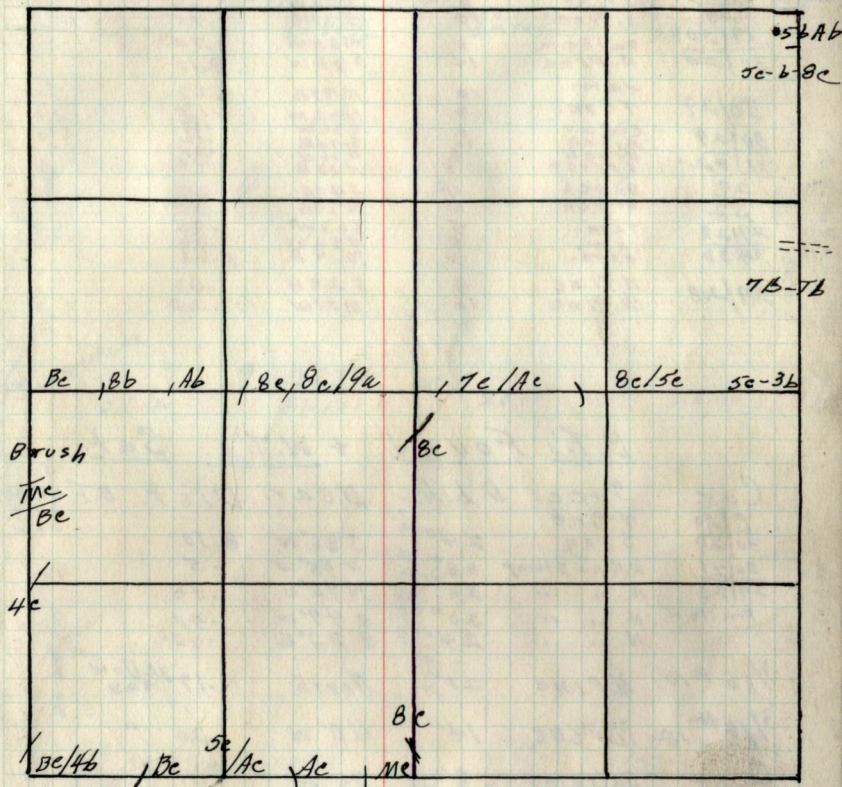
29.
Chains

Notes

Chains.

Type & Cultural map

29



Remarks:

90. Original G.L.O. Corners

Cor.	Spec.	D.b.h.	Bear	Dist.	
19/26	Balsam	6	N87W	3.75	
30/29	N. Pine	14	S86W	8.10	
19/30	Tam.	8	S34W	1.4	
29/19	J. Pine	10	N50W	.86	
25/30	N. Pine	10	N40E	1.19	} Resurvey
36/31	N. Pine	24	S75 1/2 W	1.84	
25/30	X				
30/29	J. Pine	10	S12W	.13	
31/31	J. Pine	10	N8W	.20	
30/29	Cedar	6	S39W	.13	
31/32	Or. Spruce	10	S74E	.12	
30/29	Tam.	10	N36W	.25	
M.C.1	J. Pine	3	N23E	.40	
M.C.2	Tam.	10	N77E	.21	
	J. Pine	8	N32W	.13	
	S.W. oak	10	S8E	.35	
	W. oak	8	N28E	.22	

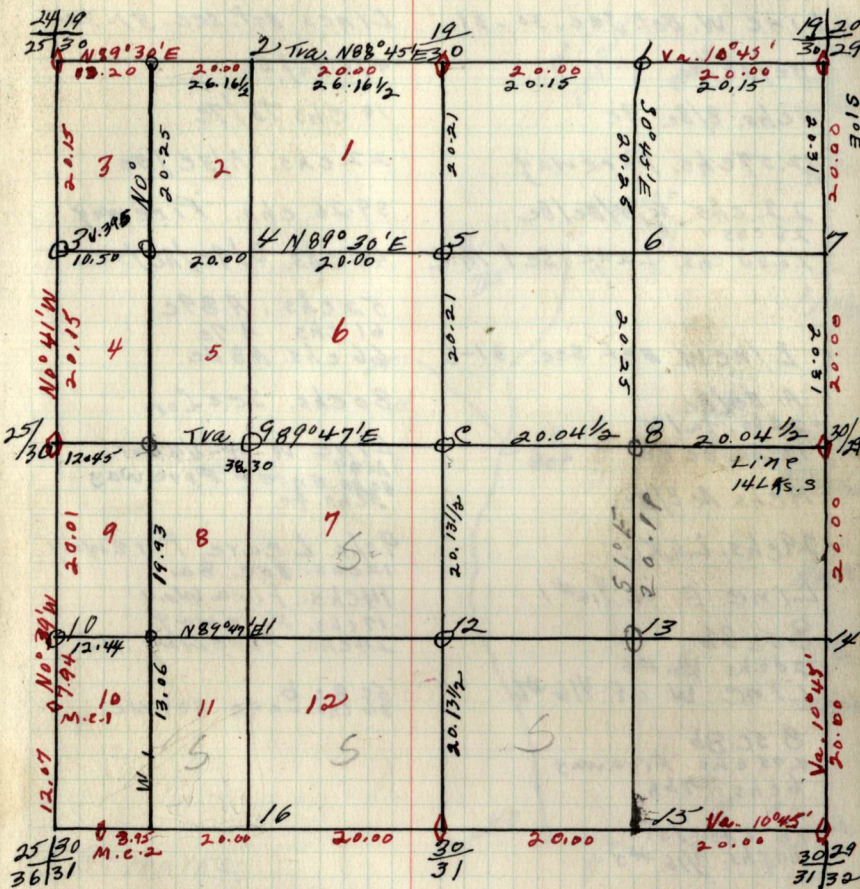
B.T.'s Found & W.T.'s Set.

Cor.	Spec.	D.b.h.	Bear.	Dist.	B.T. or W.T.
19/20	N. Pine				
30/29	Stub	24"	S86°W	8.10	
1/16 #14	N. Pine	20"	North	.17	yellow tag
30/29	Birch	4"	S75°W	.22	
19/30	J. Pine	20"	N50°W	.86	
New =	Cedar	5"	N20°W	.6	
Lot con	Cedar	5"	S48°W	.16 1/2	
Lot cor.	Birch	4"	N49°E	.05	
Lot cor.	Pine	3"	N50°W	.11	

LOCATION Poster 3LLKS E of F Lane.
 Cor. 15 IN Inger Road

1/16 #5	R. Pine	12"	N88E	13	B.T. + wt
01/4	Spruce	6	N31E	25	B.T.
	"	6	S50E	15	B.T. + wt
1/16 #8	J. Pine	6"	N36W	29	B.T. + wt
1/16 #13	Birch	8"	S1E	.22	wt.

Sec. 30 T. 147 N. R. 26 W. 30
 by Hobbs



B.T.'s & W.T.'s (cont)
 Cor. Spec. D.b.h. Bear. Dist. B.T. or W.T.

32.

Notes

Chains

Line E. Bet. sec. 32-5

A B 3c Bc.

8 chs. 88e/99c

13.80 Chs. Fireway A B Bc

20 chs. A 9e/7c

25 chs. T 6 7b

30 chs. A 7c

34 chs. T 6 7b

40 chs. V 4 Cor.

80.28 chs. Sec. Cor.

Line W of 1/16 #4
7c 4b

2 chs. 7c 7e

13 chs. A 0 7c

15 chs. 7c 7e

20.62 chs. 1/16 #3.

Chains

Line N. of. 1/16 #16

A B 1

11 chs. 7c

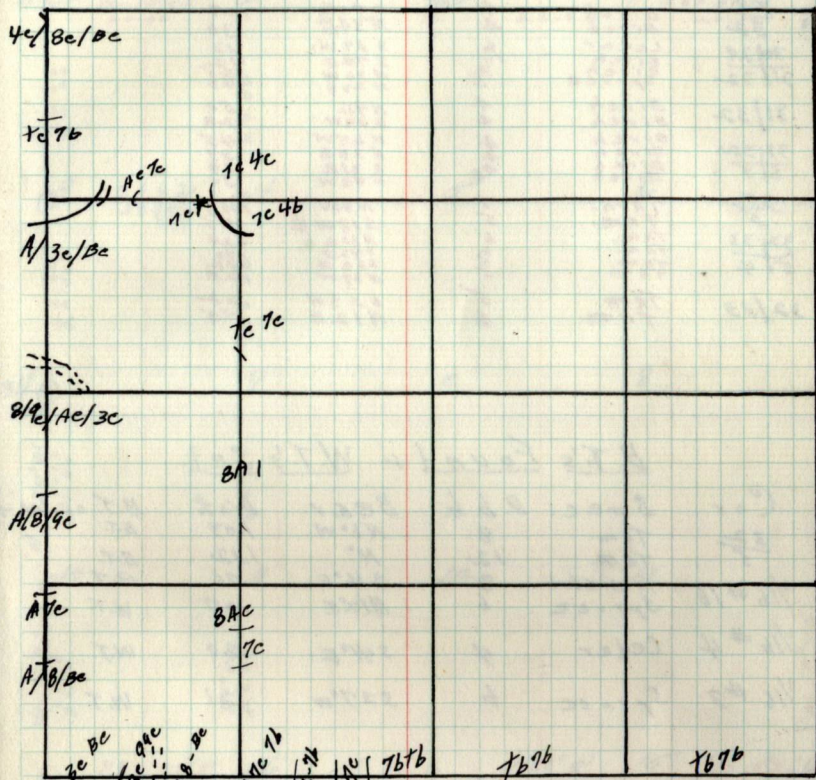
15 chs. B A.

44 chs. 7c 7e

58 chs. 7c 4b

Type & Cultural map

32



Remarks:

32

Original C.L.O. Corners.

Cor.	Spec.	D.b.h.	Bear.	Dist.
29/28	Tam.	5	S 63° W	.80
32/33	Tam.	6	N 32° W	.98
29	Tam.	5	N 9° E	1.00
32	Birch	4	S 40° E	.27
30/29	Birch	4	N 39° E	.30
31/32	Cedar	16	S 39° W	.13
	Birch	10	S 74° E	.12
	Spruce	8	N 36° W	.40
			N 23° E	.40
31/32	Birch	4	N 9° E	.50
	Birch	4	S 29° W	.28
31/32	Birch	4	N 65° W	.45
6/5	Birch	4	N 34° E	.37
	Birch	4	S 31° E	.39
	Birch	4	S 49° W	.30
32/5	Tam.	4	N 6° W	1.08
5	Tam.	5	S 18° E	.75
32/33	Tam.	6	N 6° E	.29
5/4	Tam.	6	S 38° W	.42
	Tam.	5	N 39° W	.29
32/33	Tam.	5	S 28° W	.22
	Tam.	6	N 12° E	.75

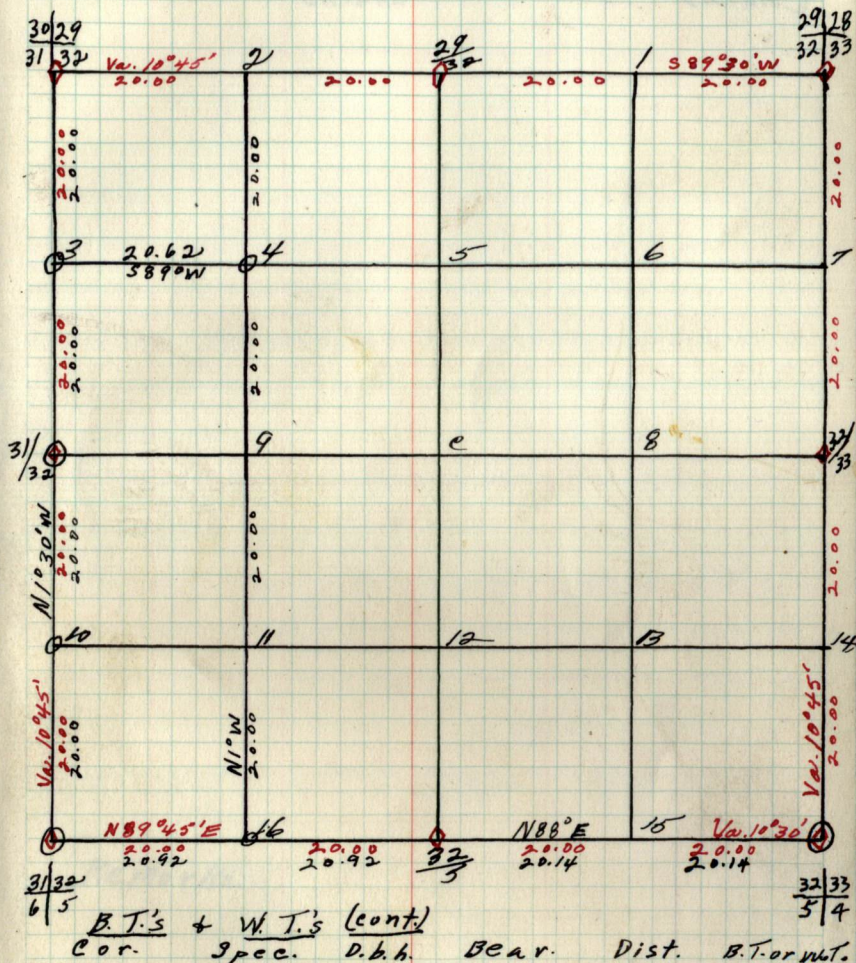
B.T.'s Found + W.T.'s Set.

Cor.	Spec.	D.b.h.	Bear.	Dist.	B.T. or W.T.
32/5	Tam.	8	N 6° W	1.03	B.T.
	Tam.	12	N°	1.12	B.T.
1/16 #16	Tam. stub	8	S 16° E	.76	B.T.
	Spruce	6	N 12° E	.07	W.T.
1/16 #4	Cedar	4	S 44° E	.20	W.T.
1/16 #3	Spruce	6	S 27° W	.21	W.T.

Sec. 32 T.147 N. R.26 W.

32

by - Haberle



33.

Chains

Notes

Chains

Type & Cultural map

33

Remarks:

34

Original G.L.O. Corners

Spec. D.b.h. Bear. Dist.

Cor.
27/26
34/3527
34
28/27
33/34

33/34

33/34
4/334
334/35
31/2

34/35

T&M:
T&M:
T&M:
P. of Gil.
Aspen
cedar
spruce
cedar4
2
3
3
12
6
12322W
319E
N65W
N37E
337E
N2E
N33E
N12W
547E
589W.55
.28
.18
.40
.64
.59
.69
2.00
.84
2.90

B.T.'s Found & W.T.'s Set

Cor.	Spec.	D.b.h.	Bear.	Dist.	B.T. or W.T.
34/35	Sp. stub	1	S37W	74	B.T.
3/2	location post	4	W65E	12	B.T.
34	sp. or stub	13	S10W	70	wt.
3	Aspen	2	N19E	27	wt.
28/27	T&M	3	N56W	50	wt.
33/34	"	3	N76E	36	wt.
27/34	T&M	3	N51E	.51	wt.
35/34	BT&M	20	S57W	30	wt.
	T&M	26	S82E	45	wt.
0/4	Aspen	8	N22E	10	wt.
1/10 #9	Spruce	6	S88E	20	wt.
1/10 #2	J. PINE	4	N23E	44	wt.

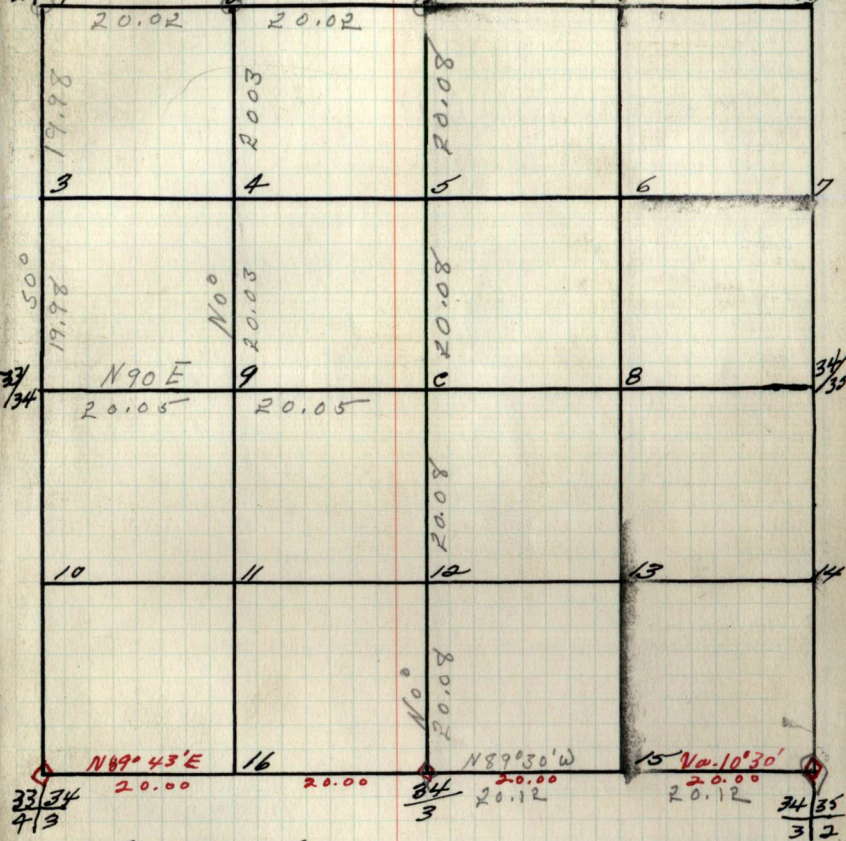
5.9
266
174
174
191.4

94
184
5

Sec. 34 T147N-R26W

34

by Haberle

28/27
31/34

B.T.'s + W.T.'s (cont.)

Cor. Spec. D.b.h. Bear. Dist. B.T. or W.T.

34/35
3/2

35.

Chains

Notes

Chains

Type & Cultural Map

35

Remarks:

35.

Original C.L.D. Corners

Cor. Spec. D.b.h. Bear. Dist.

 $\frac{26}{35} | \frac{25}{36}$

X

26
35 $\frac{27}{34} | \frac{26}{35}$

34 | 35

 $\frac{34}{37} | \frac{35}{38}$ cedar
spruce
cedar
cedar12
10
6N 39 E
N 12 W
S 42 E
S 89 W.69
2.00
2.84
2.90 $\frac{35}{2} | \frac{36}{1}$ TAM
TAM.4
6N 56 W
S 40 W1.20
.19 $\frac{35}{21} | \frac{36}{1}$ cedar
balsam
cedar
cedar.6
4
10
12S 51 E
N 12 E
N 66 W
S 25 W.38
.23
.28
.12

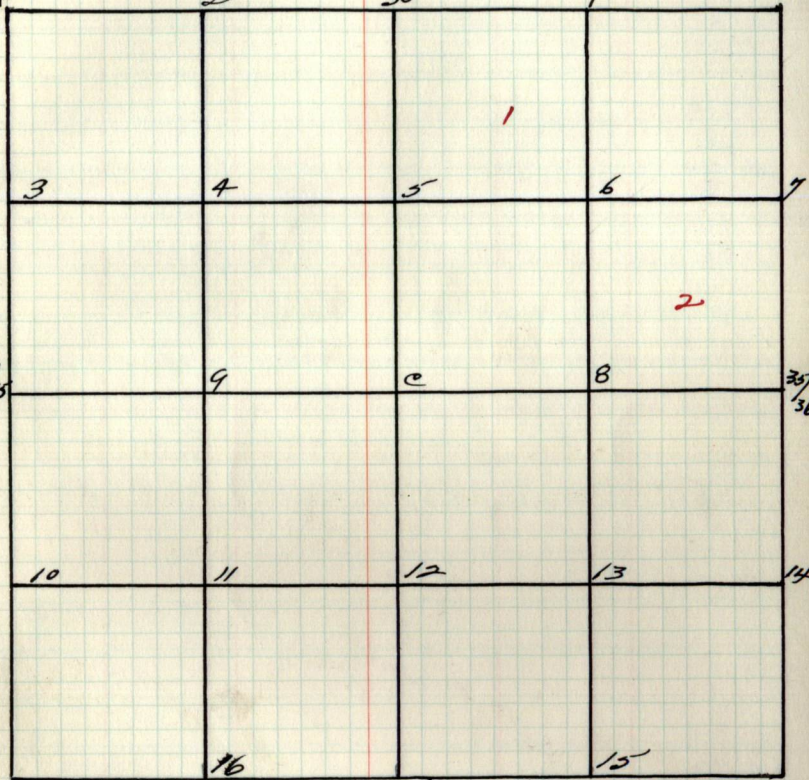
35 | 36

B.T.'s Found + W.T.'s Set.

Cor. Spec. D.b.h. Bear. Dist. B.T. or W.T.

Sec. 35 T149N-R26W
by-

35

 $\frac{27}{34} | \frac{26}{35}$ $\frac{26}{35}$ $\frac{26}{35} | \frac{25}{36}$  $\frac{34}{37} | \frac{35}{38}$ $\frac{35}{2}$ $\frac{35}{21} | \frac{36}{1}$ B.T.'s + W.T.'s (cont.)
Cor. Spec. D.b.h. Bear. Dist. B.T. or W.T.

36

Notes

Chains

Chains.

Type & Cultural Map.

36

Remarks:

36

Original G.L.O. Corners

Cor. Spec. D.b.h. Bear. Dist.

25/30

36/31

25/36

26/25

35/36

35/36

35/36

21/1

36/1

36/31

7/6

36/31

M.C.1

M.C.2

X

X

X

X

X

X

X

X

X

X

X

X

X

X

X

X

X

X

X

X

X

X

X

X

X

X

X

X

X

X

X

X

cedar	6	S 57 E	.38
Balsam	4	N 12 E	.23
cedar	10	N 66 W	.28
cedar	12	S 25 W	.12
Aspen	4	N 59 W	.40
Tam.	4	S 26 W	.47

Tam.	6	N 89 3/4 W	13.68
Aspen	6	N 87 E	2.95
Aspen	14	S 83 E	3.20

B.T.'s Found + W.T.'s Set

Cor. Spec. D.b.h. Bear. Dist. B.T. or W.T.

Sec. 36 T147N R26W

36

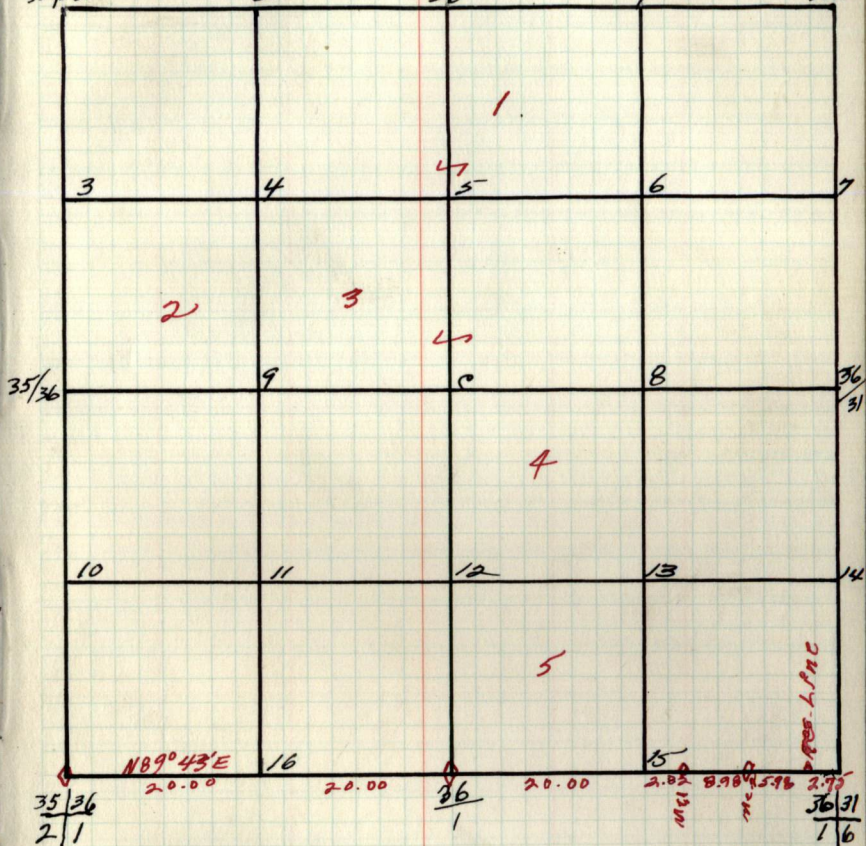
by-

26/25
35/36

2

25/36

1

26/30
36/31B.T.'s + W.T.'s (cont.)

Cor. Spec. D.b.h. Bear. Dist. B.T. or W.T.

Pages 37-End
are Blank