

T146N R ~~146~~ 29W

DILLIGEN
MINING

MINING
TRANSFER BOOK

No. 4775

ccc 25

EUGENE DIETZGEN CO.

DRAWING MATERIALS, MATHEMATICAL and
SURVEYING INSTRUMENTS

Chicago New York San Francisco New Orleans Pittsburg Toronto

Distances from Center of Roadway for Cross-Sectioning
Roadway 16 feet wide. Side Slopes 1 on 1.
For Single Track Embankment.

H	0	.1	.2	.3	.4	.5	.6	.7	.8	.9	H
0	8.0	8.1	8.2	8.3	8.4	8.5	8.6	8.7	8.8	8.9	0
1	9.0	9.1	9.2	9.3	9.4	9.5	9.6	9.7	9.8	9.9	1
2	10.0	10.1	10.2	10.3	10.4	10.5	10.6	10.7	10.8	10.9	2
3	11.0	11.1	11.2	11.3	11.4	11.5	11.6	11.7	11.8	11.9	3
4	12.0	12.1	12.2	12.3	12.4	12.5	12.6	12.7	12.8	12.9	4
5	13.0	13.1	13.2	13.3	13.4	13.5	13.6	13.7	13.8	13.9	5
6	14.0	14.1	14.2	14.3	14.4	14.5	14.6	14.7	14.8	14.9	6
7	15.0	15.1	15.2	15.3	15.4	15.5	15.6	15.7	15.8	15.9	7
8	16.0	16.1	16.2	16.3	16.4	16.5	16.6	16.7	16.8	16.9	8
9	17.0	17.1	17.2	17.3	17.4	17.5	17.6	17.7	17.8	17.9	9
10	18.0	18.1	18.2	18.3	18.4	18.5	18.6	18.7	18.8	18.9	10
11	19.0	19.1	19.2	19.3	19.4	19.5	19.6	19.7	19.8	19.9	11
12	20.0	20.1	20.2	20.3	20.4	20.5	20.6	20.7	20.8	20.9	12
13	21.0	21.1	21.2	21.3	21.4	21.5	21.6	21.7	21.8	21.9	13
14	22.0	22.1	22.2	22.3	22.4	22.5	22.6	22.7	22.8	22.9	14
15	23.0	23.1	23.2	23.3	23.4	23.5	23.6	23.7	23.8	23.9	15
16	24.0	24.1	24.2	24.3	24.4	24.5	24.6	24.7	24.8	24.9	16
17	25.0	25.1	25.2	25.3	25.4	25.5	25.6	25.7	25.8	25.9	17
18	26.0	26.1	26.2	26.3	26.4	26.5	26.6	26.7	26.8	26.9	18
19	27.0	27.1	27.2	27.3	27.4	27.5	27.6	27.7	27.8	27.9	19
20	28.0	28.1	28.2	28.3	28.4	28.5	28.6	28.7	28.8	28.9	20
21	29.0	29.1	29.2	29.3	29.4	29.5	29.6	29.7	29.8	29.9	21
22	30.0	30.1	30.2	30.3	30.4	30.5	30.6	30.7	30.8	30.9	22
23	31.0	31.1	31.2	31.3	31.4	31.5	31.6	31.7	31.8	31.9	23
24	32.0	32.1	32.2	32.3	32.4	32.5	32.6	32.7	32.8	32.9	24
25	33.0	33.1	33.2	33.3	33.4	33.5	33.6	33.7	33.8	33.9	25
26	34.0	34.1	34.2	34.3	34.4	34.5	34.6	34.7	34.8	34.9	26
27	35.0	35.1	35.2	35.3	35.4	35.5	35.6	35.7	35.8	35.9	27
28	36.0	36.1	36.2	36.3	36.4	36.5	36.6	36.7	36.8	36.9	28
29	37.0	37.1	37.2	37.3	37.4	37.5	37.6	37.7	37.8	37.9	29
30	38.0	38.1	38.2	38.3	38.4	38.5	38.6	38.7	38.8	38.9	30
31	39.0	39.1	39.2	39.3	39.4	39.5	39.6	39.7	39.8	39.9	31
32	40.0	40.1	40.2	40.3	40.4	40.5	40.6	40.7	40.8	40.9	32
33	41.0	41.1	41.2	41.3	41.4	41.5	41.6	41.7	41.8	41.9	33
34	42.0	42.1	42.2	42.3	42.4	42.5	42.6	42.7	42.8	42.9	34
35	43.0	43.1	43.2	43.3	43.4	43.5	43.6	43.7	43.8	43.9	35
36	44.0	44.1	44.2	44.3	44.4	44.5	44.6	44.7	44.8	44.9	36
37	45.0	45.1	45.2	45.3	45.4	45.5	45.6	45.7	45.8	45.9	37
38	46.0	46.1	46.2	46.3	46.4	46.5	46.6	46.7	46.8	46.9	38
39	47.0	47.1	47.2	47.3	47.4	47.5	47.6	47.7	47.8	47.9	39
40	48.0	48.1	48.2	48.3	48.4	48.5	48.6	48.7	48.8	48.9	40

Example—If point is 22.6 ft. above grade, how far should it be from center line to be a slope stake point? Ans. from Table 30.6. For same slopes but other widths of roadbed, correct above figures by one-half difference in width of roadbed; thus in example above, for 20 ft. roadbed distance will be $30.6 + (20 - 16) \div 2$ or 2 ft. added to $30.6 = 32.6$. For slopes of 1 on 1 $\frac{1}{2}$ see inside of back cover.

Copyright, 1914, by Eugene Dietzgen Co.

The paper stock of this book is made of a high grade 50% rag paper having a water resisting surface and is sewed with Bing Special Enamel Waterproof Thread.

Made in U. S. A.

Scanned

8-7-12

Flanney

T. 146 N. R. 28-29 W.

Index

T. 146	R. 28
Sec	Page
5	1-2
6	3-4
7	5-6
8	7-8
9	9-10

T. 146 R. 29

Sec. Page

1 ✓	11-12
2 ✓	13-14
3 ✓	15-16
4	17
5	19
6	21
7 ✓	23-24
8	25-26
9	27-28
10	29
11	31-32
12 ✓	33-34
13 ✓	35-36
14	37
✓ 15	39-40
✓ 16	41-42
17	43-44
18	45-46
✓ 19	47-48
✓ 20	49-50
21	51-52
22 ✓	53-54
23	55-56
24 ✓	57-58
25	59-60
26	61-62
27	63
28	65
29	67-68
30	69
31	71-72
32	73-74
33	75-76
34	77

35

79

36

81

1

Pages 001A-010
are Blank

Type Map

Sec. 2-T146N. R. 29W.

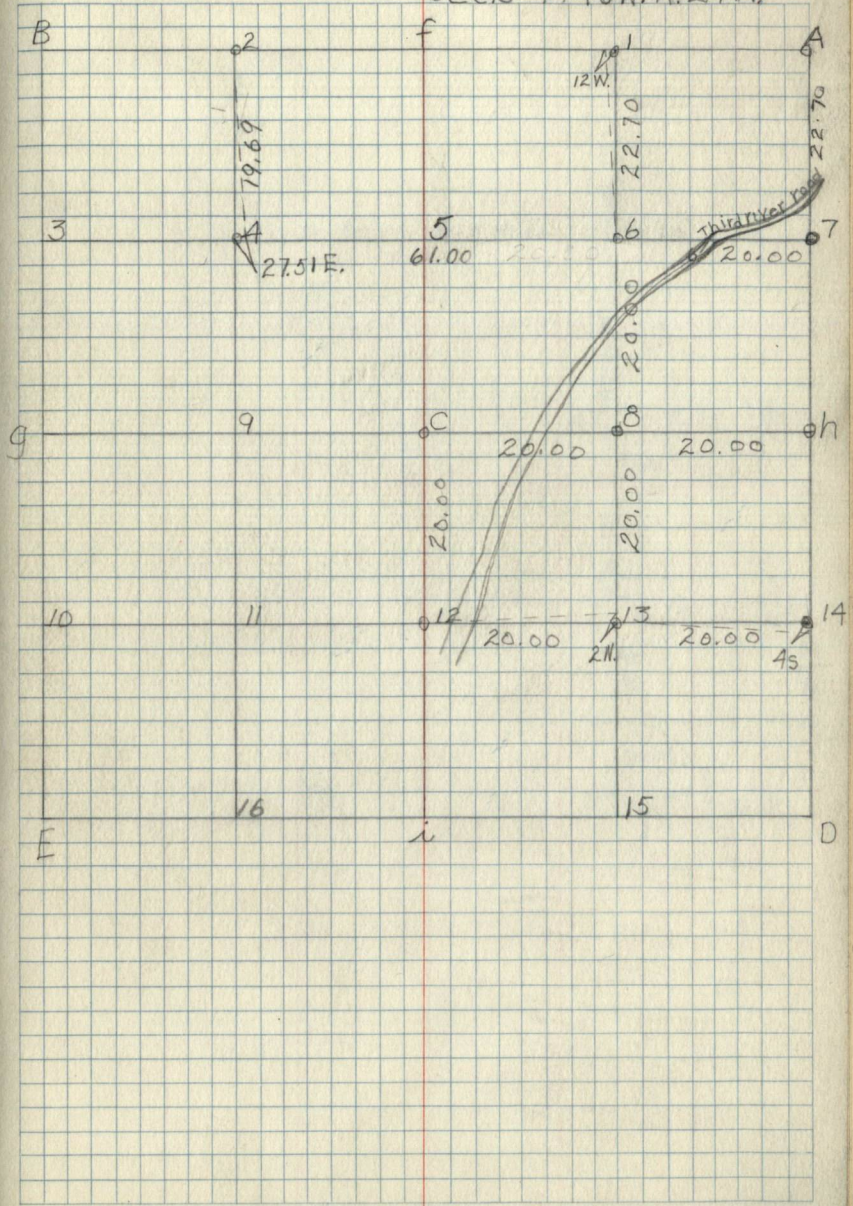
8b 1s Ac 8b	8b	Bc	7c 7b Ac 7b
Ac	9b 5 9b 8b	Bc	Ab
8b	9b	—	Tb
8b	8b	Ac	Ac
8b	8b	3b	Bb
2 Bc 2 Bc	BC 2	Ac 6 3c Ac 4 3c	Ab Ac 3c 1s
0.	—	1 Swamp	Bc 3c
3c	A	Ac	Ac 8a
Ac	—	7c	8a 8a
7c	—	—	Bc
Ac	—	—	3c
2 Ma 9 Mc	AB 9 1 7c Ac 7c	7c	7c 8c 4b 1s 2
7b	—	7c	—
8b	Ac	—	—
1	3b	—	—
A	—	7b	—
Mc	3/B	—	—
—	Ac	Bc 7c	3c
3/B Bb 3c Ac Bc Ac	—	A	—
A	—	—	—
Mc	—	1 Swamp	—
Ac 3c	3c	Ac	—
7b	Ac	1 Swamp	—
7c Ac-3c	Ac 7c Ac 4b	—	—

Corner Notes

Cor. Spec. Dia. Bearing Dist. Remarks

- 7 Set 4" Aspen post as N. $\frac{1}{16}$ cor.
- 6 Set 4" Birch post as NE $\frac{1}{16}$ cor.
- 8 Set 4" Birch as E. $\frac{1}{16}$ cor.
- 13 Set 4" Birch post as SE $\frac{1}{16}$ cor.
- C. Set 4" Birch post as C. $\frac{1}{4}$ cor.
- 12 Set 3" elm post as S $\frac{1}{16}$ cor.

Sec. 3-T/46N. R. 29W.



Type Map

Sec. 3-T146N. R. 29W

1 Mo
18 BbAc
2

3

Ac

| Bb-3c-Ac | A-3 FcW6 | 0^{5c} Bc-3c | 8c

0

1

2

7c

Ac

7c

Ac

Ac/3c

7c

Ac

Ac

7c

0

Ac

3c

Ac-7c

Ac 3c

6c/3c

Lc/7c

8c

Ac

7c

3c

7c

Ac

Sugar
Lake

Fire

2

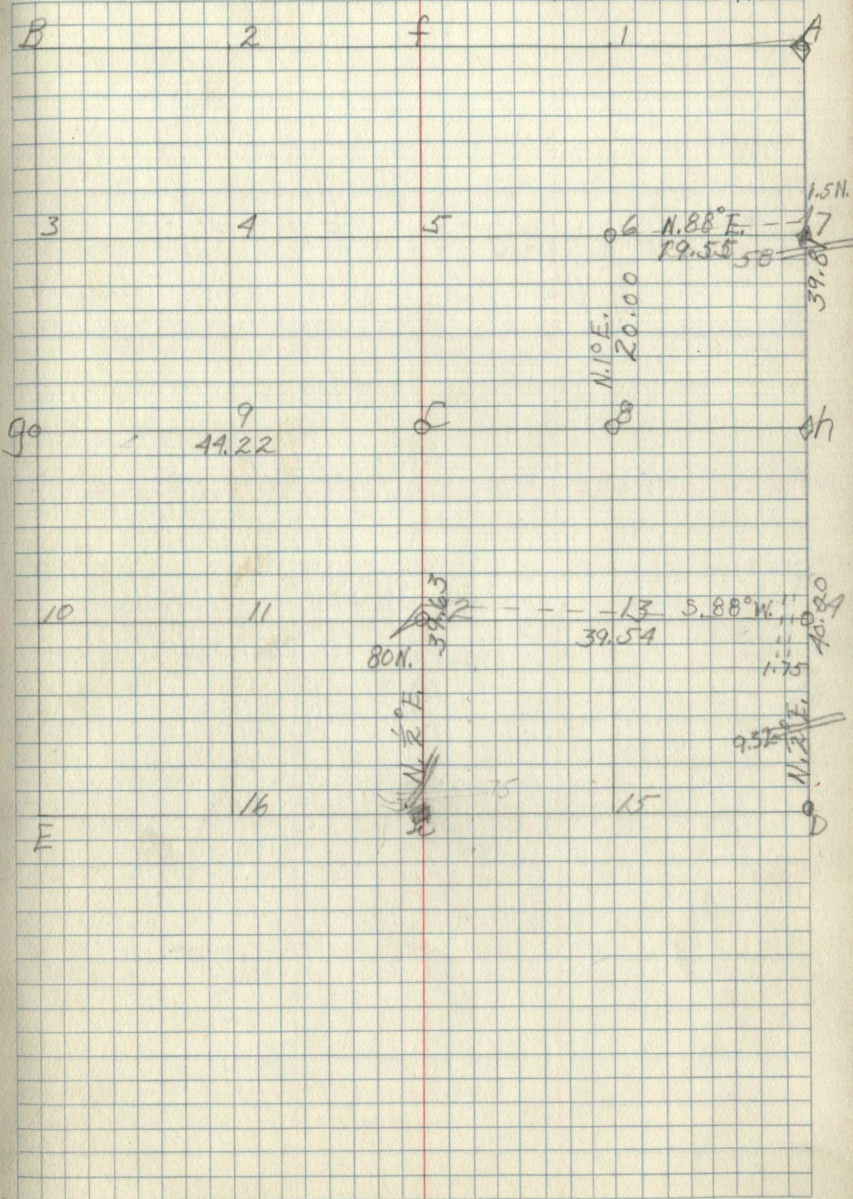
7c 2

Pages 017-022
are blank

Corner Notes

Cor.	Spec.	Dia.	Bearing	Dist.	Remarks
H	W. Oak	5"	N. 32° E.	14.6	
	Aspen	8"	S. 21° W.	36.6	
A	B. Spruce	5"	N. 58° 30' W.	27.8	
	Aspen	5"	N. 87° 30' E.	135.5	

Sec. 7-T, 146 N., R. 29 W. ²³



Type Map

Sec. 8-T.146N. R. 29W. 26

PAc^{3c} / 117²⁷ 2-7b

1Ac^{3c} / 132^{3c} / 302^{3c} / 7b

3b

17b / 2-7b / Ac / 2-7b

18-7a

11 2-7b

11 18b / Ac / 19Ab-3b

304^{3c} / 12-7b / Ac / 12-7b / 11b / 11c

Type Map

28
Sec. 9. T. 146 N. R. 29 W.

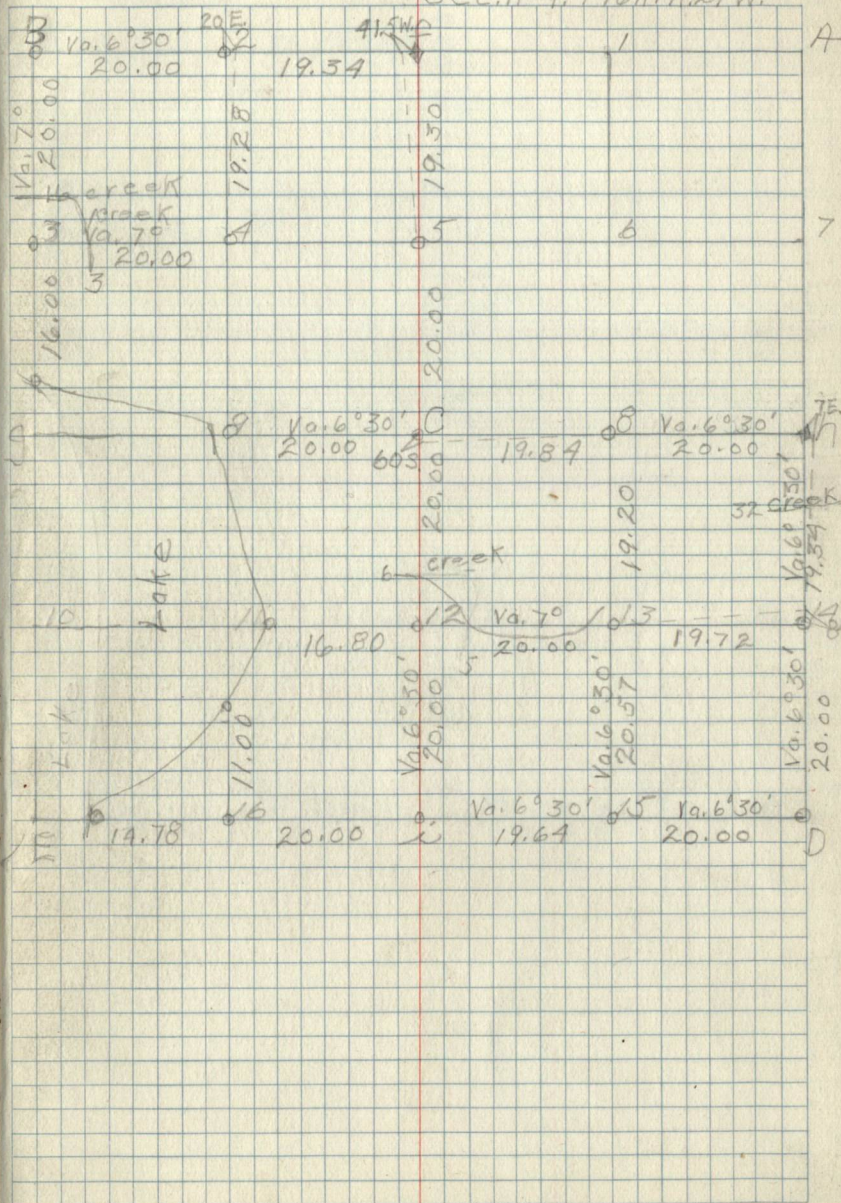
12, Ac-34 1 Ac-36-Bb-36-Bb 1 A-36-Bb 2	
3b	A
2	3b
3b	Bb
2	2-A
3b	7b
2, Ac 1 3c	3c, 3c, 7b 2
	Bb
	2
	7b
Ac 1 Ab-36-Bb 2	7b A 2 2
	2
	1 willow
	A
	2
	2
Ab 7b 8B	2 Ab-36 2
	2
	1
	A
	Mc
	B
	Ac
	9a
	8a
	3b

29

Corner Notes

Cor.	Spec.	Dia.	Bearing	Dist	Remarks
	Tam.	5"	N. 19° 30' W.	53.5	
D	Spruce	5 1/2"	3.9° W	23.5	
h	Aspen	5 1/2"	S. 18° 30' E	3.16	
i	elm	7"	N. 43° E	53.5	
	cedar	4 1/2"	S. 2° 0' E	3.2	
f	cedar	5"	N. 40° W	14.9	
	B. Spruce	5 1/2"	N. 52° 30' E	38.5	
B.	B. Spruce	6"	S. 46° E	36.9	
	cedar	5 1/2"	S. 24° 30' W	54.8	
	B. Spruce	7"	N. 68° W	21	

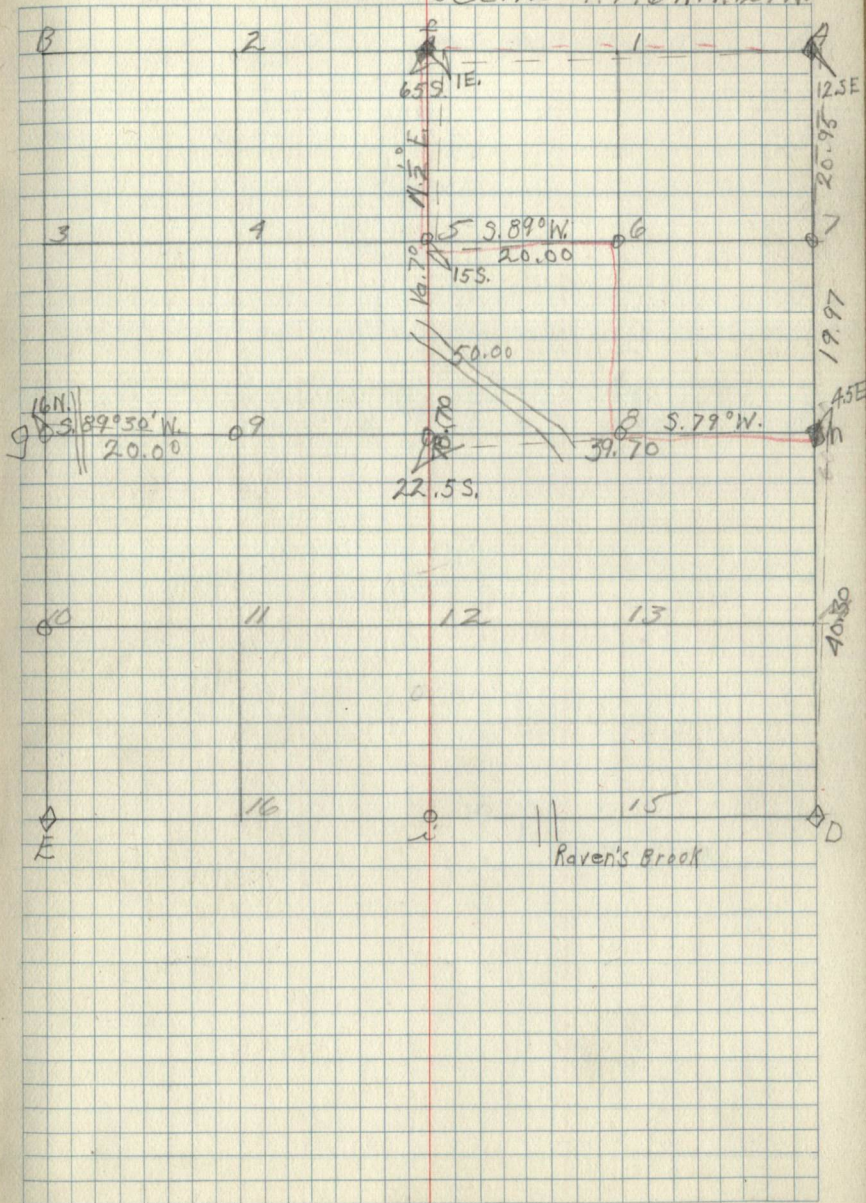
Sec. 11 - T. 146 N. R. 29 W. 31



Corner Notes

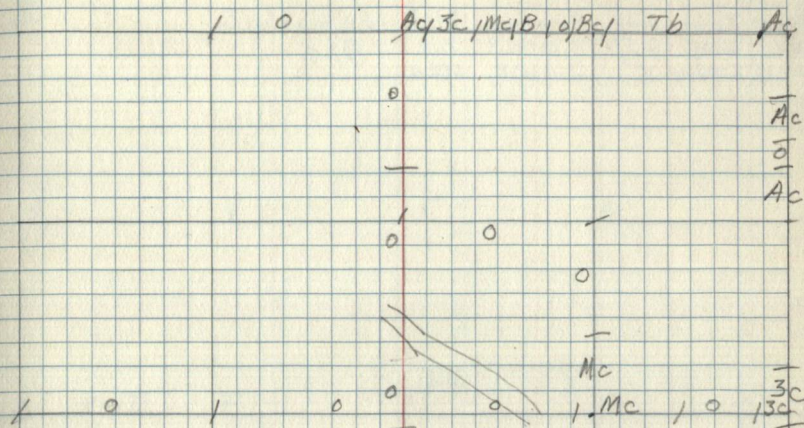
Cor.	Spec.	Dia.	Bearing	dist.	Remarks
h	Birch	7"	S. 79° N.	36.5	GLO
	Birch	7.5"	N. 55° E.	22.2	
	B. Spruce	6.5"	S. 48° E.	39.5	GLO.
A	B. Spruce	7"	N. 42° W.	17.6	
	Birch	7.5"	S. 3° W.	44.7	
	B. Ash	6"	S. 4° W.	28.2	GLO
f	B. Ash	3"	N. 43° 30' W.	10.6	

33
Sec. 12 - T. 146 N. R. 29 W.



Type Map

34
Sec. 12 - T. 146 N. R. 29 W.

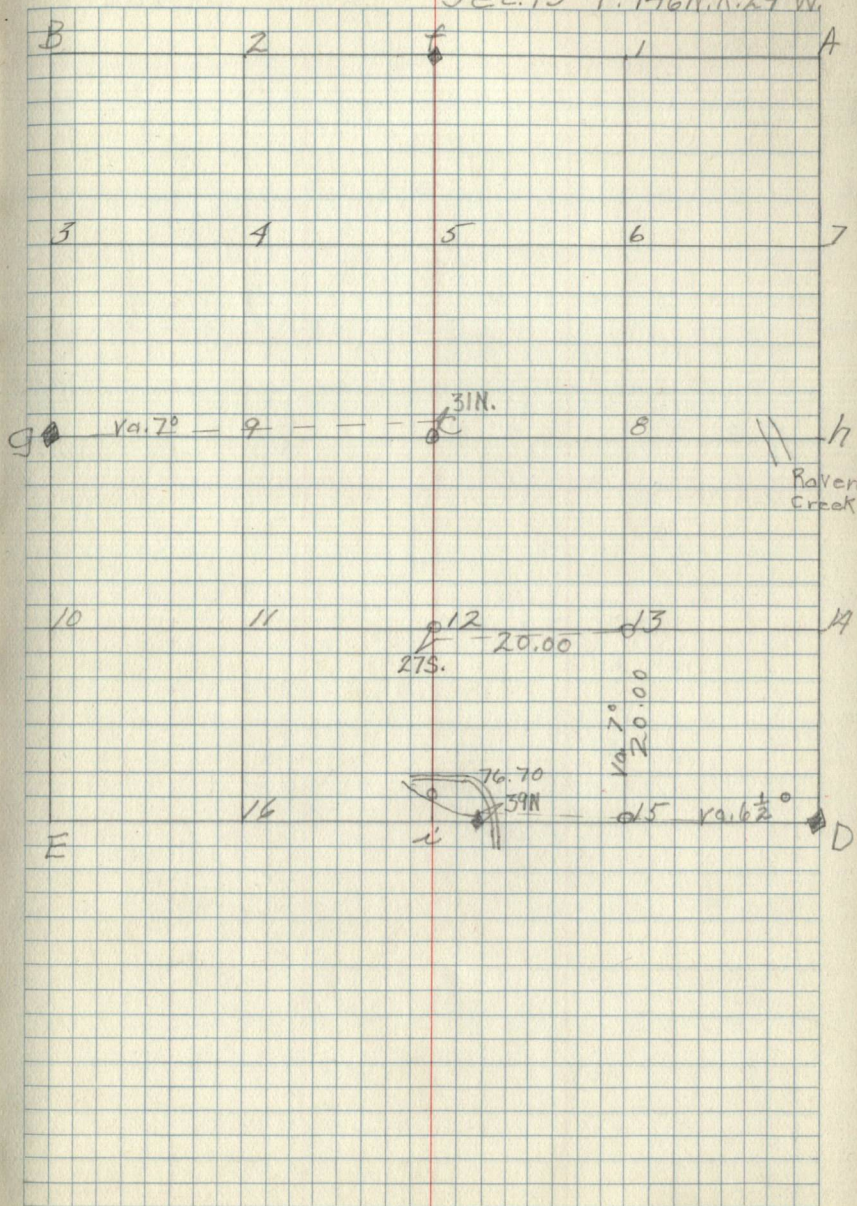


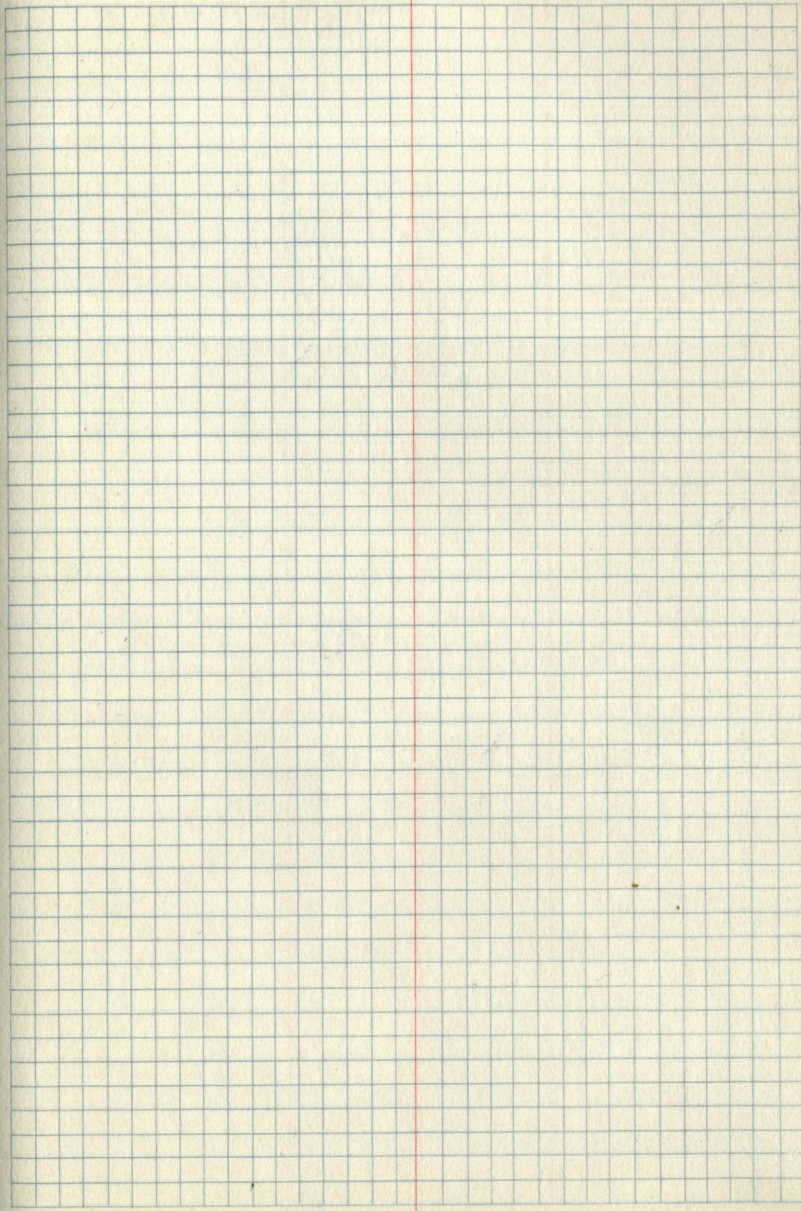
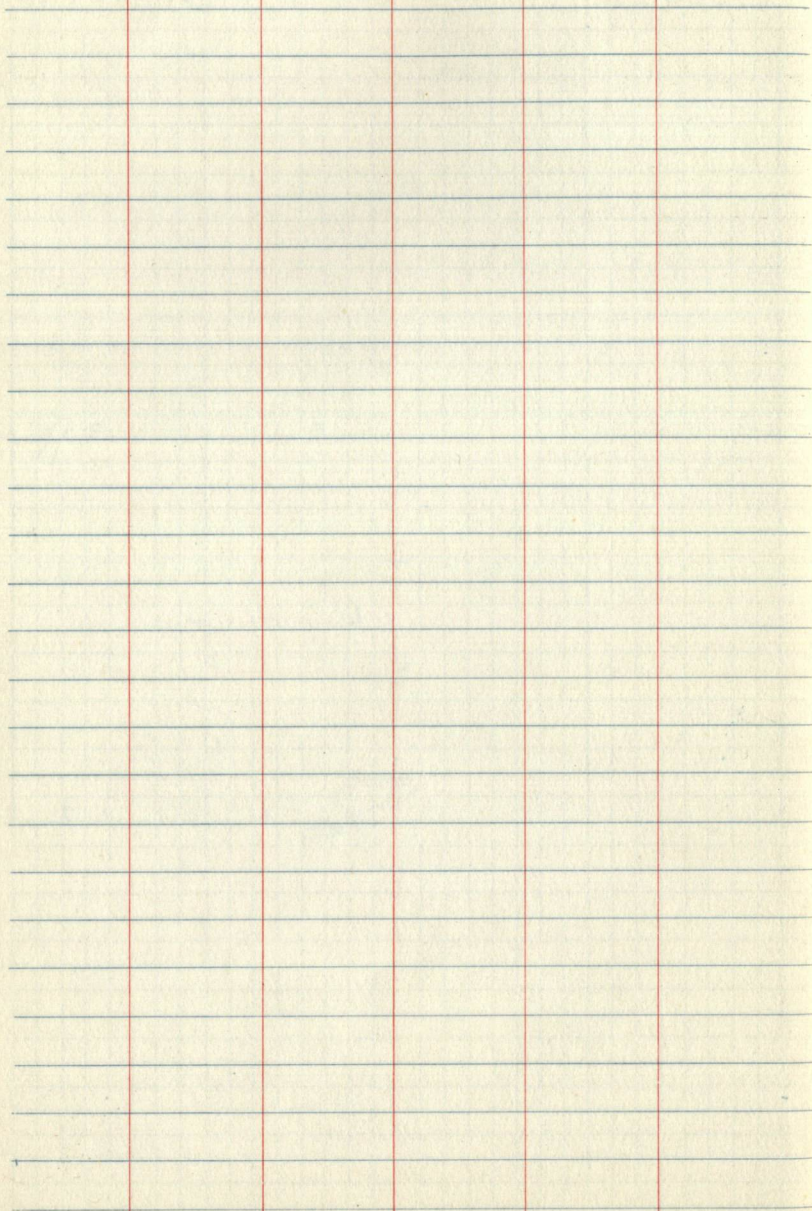
Raven's Brook

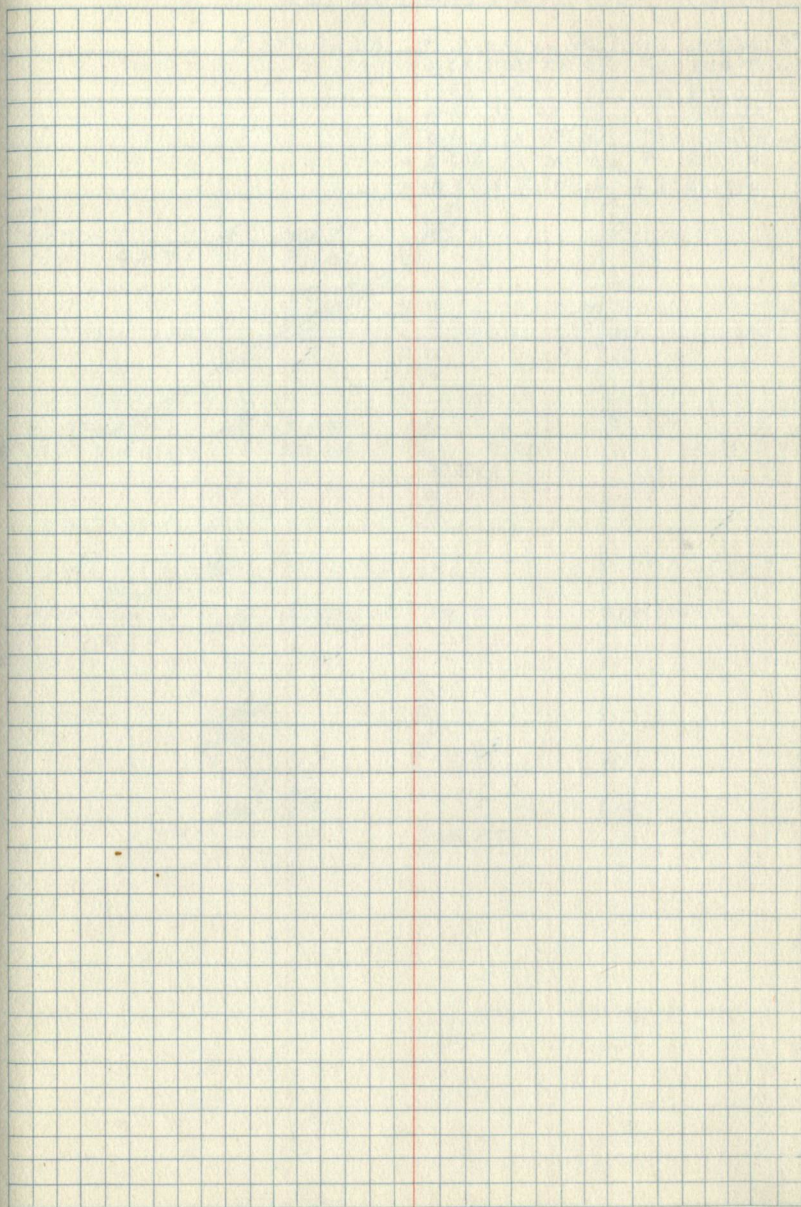
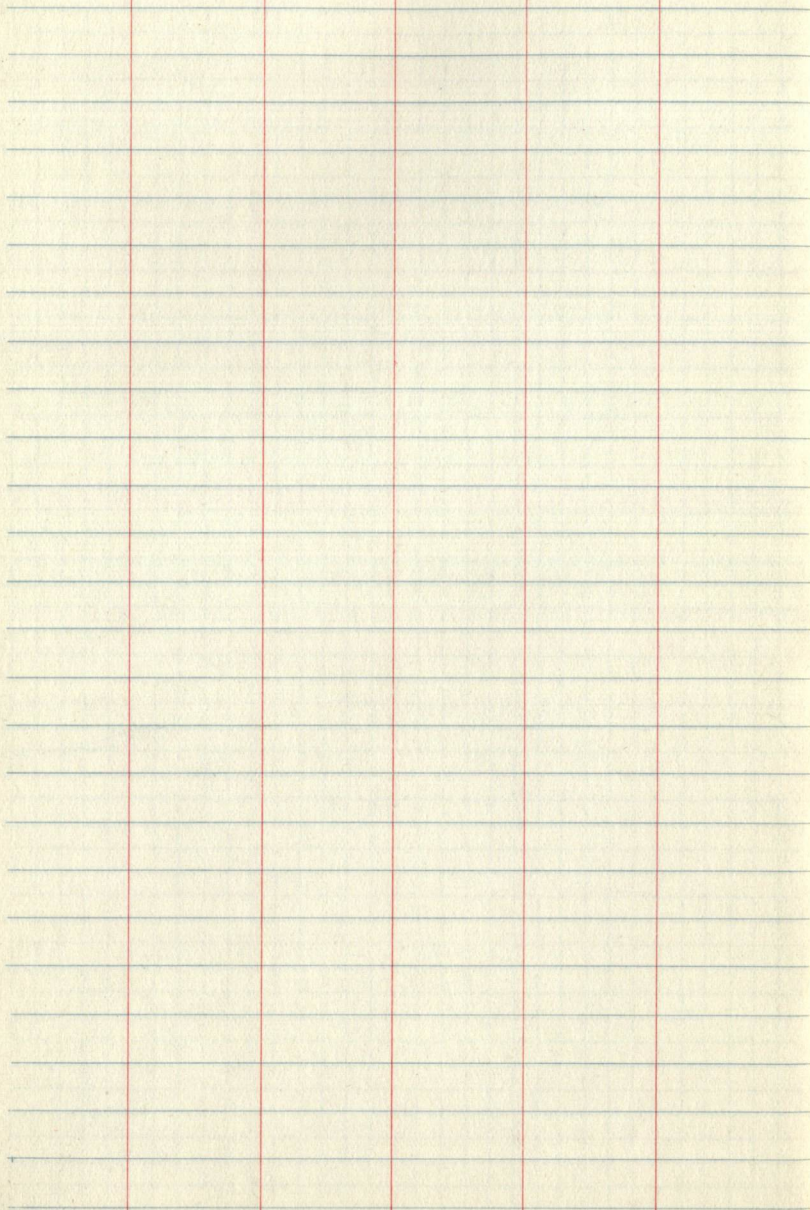
Corner Notes

Cor.	Spec.	Dia.	Bearing	Dist	Remarks
M.C.	Elm	8.5"	N. 12° W.	71.9	GLO.
W. of 15	Cedar	5"	S. 86° E.	152.4	

35
Sec. 13 - T. 146 N. R. 29 W.



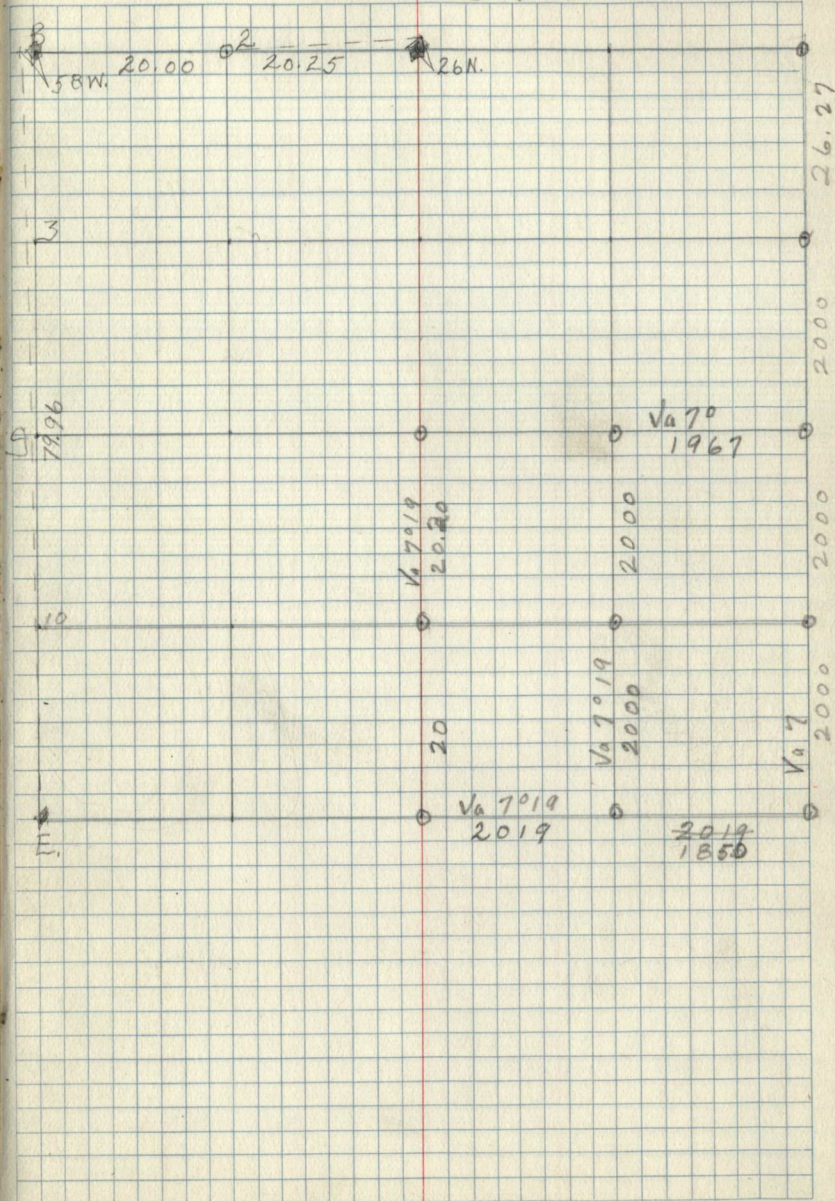




Corner Notes

Cor.	Spec.	Dia.	Bearing	Dist.	Remarks
R.	Pine	17"	S. 57° E.	72	G.L.O.
E.	Aspen	7"	N. 48° E.	23	G.L.O.
	W. Spruce	6"	S. 47° W.	77	G.L.O.
	N. Spruce	14"	N. 64° W.	99.5	G.L.O.

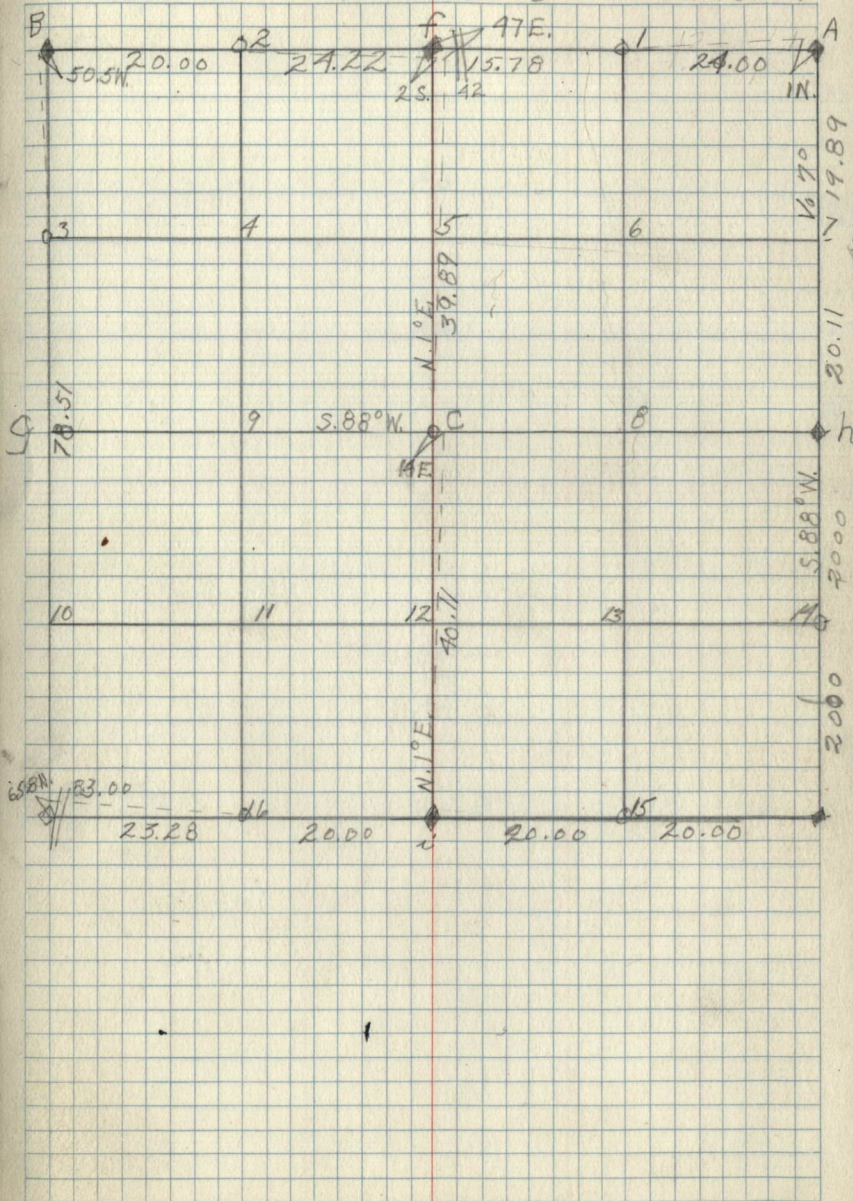
Sec 17 T 146 N R 29 W 43



Corner Notes

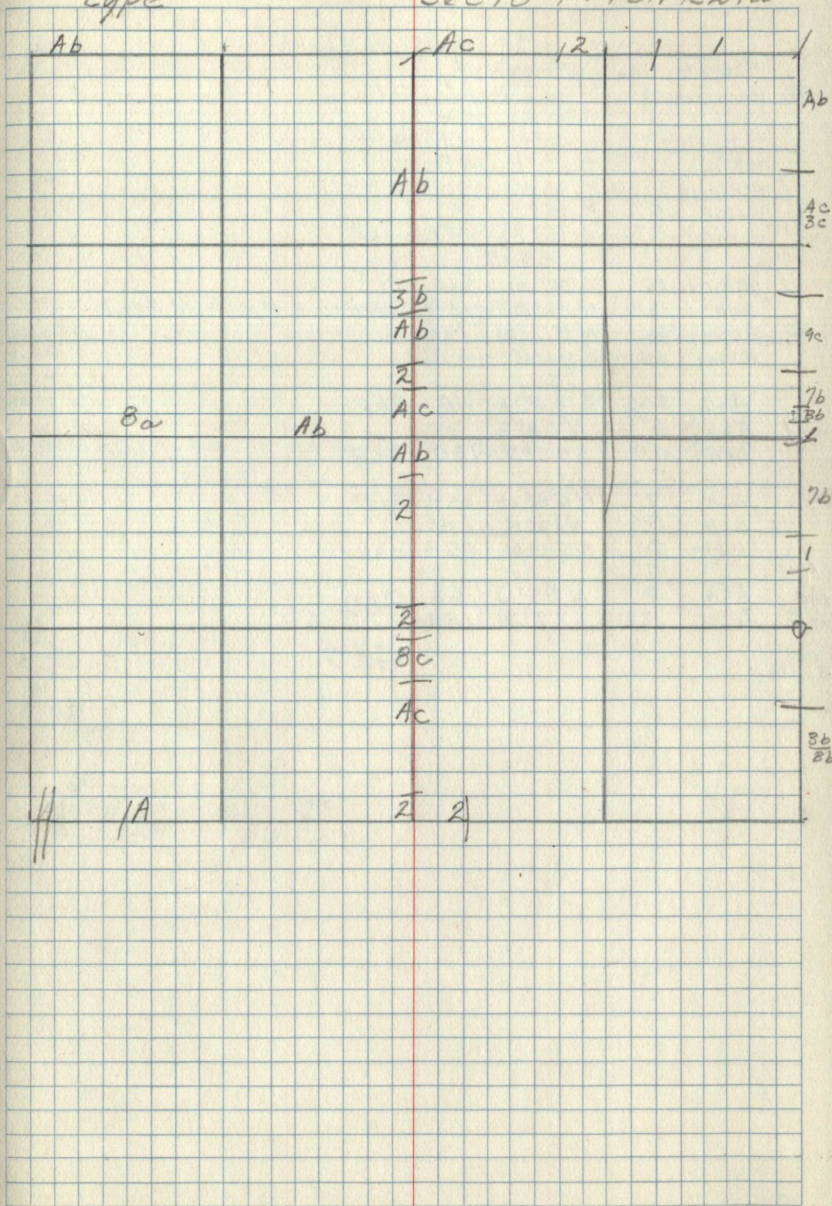
Cor.	Spec.	Dia.	Bearing	Dist.	Remarks
A	W. Pine	30"	S 42° E	47	GLO
	R. Pine	24"	N 89° E	29	
	Aspen	3"	N 20° W	22	
	Aspen	4"	S 38.5° W	57	
	B. Spruce	2"	S 53.5° W	38	GLO
h	B. Spruce	3 1/2"	N. 34° W.	20.1	GLO.
i	B. Spruce	3 1/2"	S. 7° 30' N.	57.4	GLO.
	W. Oak	20"	N. 43° 30' E.	91.4	GLO.
B	R. Pine	12"	N. 62° W.	220.8	
	W. Oak	15"	S. 32° W.	317.3	
	W. Oak	5"	S. 15° E.	106.8	
f	W. Oak	6"	S. 59° E.	44.5	GLO.
	W. Oak	6"	N. 36° W.	51.4	
	B. Spruce	2 1/2"	S. 59° W.	38.2	GLO.
h	Tam.	2 3/4"	N. 88° E.	7.8	

Sec 18 T 146N R 29W



type

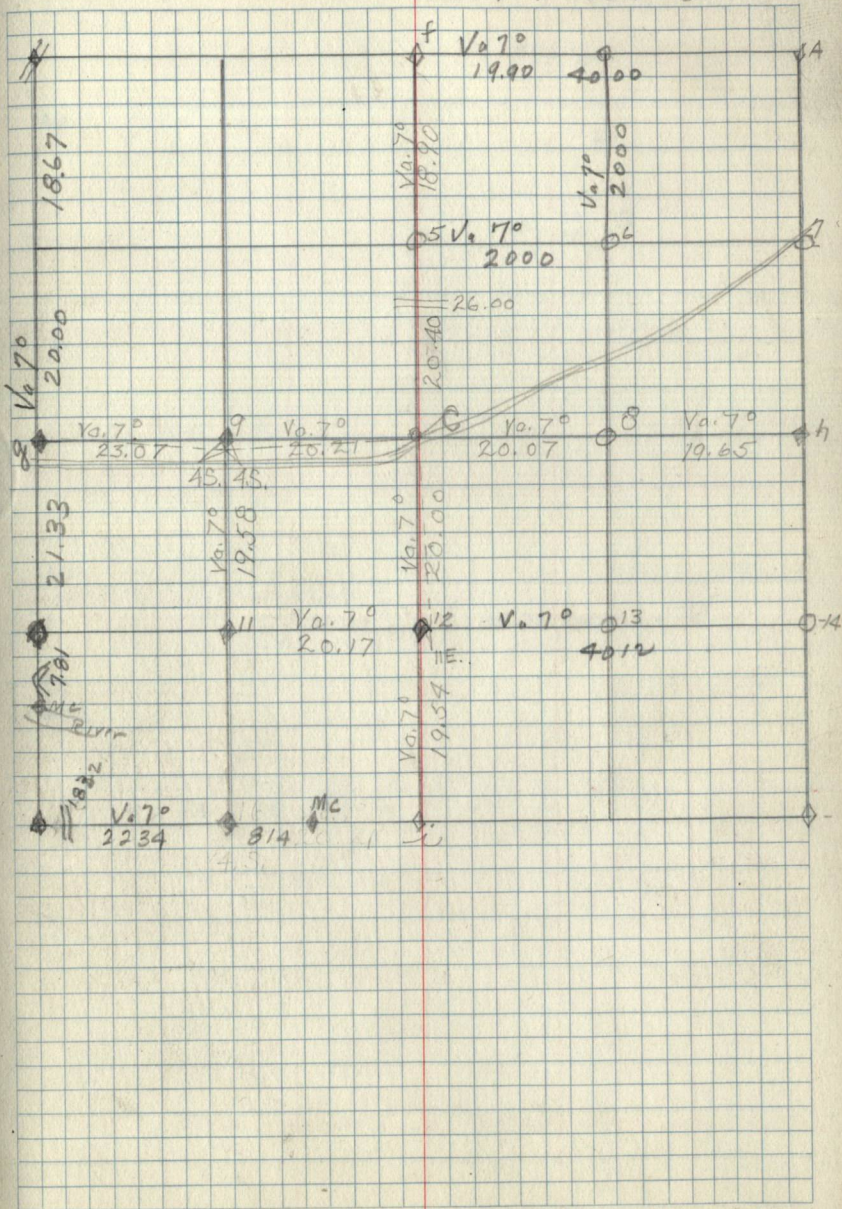
Sec 18 T146N R29W A6



Corner Notes

Cor.	Spec.	Dia.	Bearing	Dist.	Remarks
f	B. Spruce	4"	S. 50° W.	70	
f	B. Spruce	3"	S. 22.5° W	25	GLD
	W. Oak	14"	N. 83° E.	32	
C.	W. Birch	3.5"	S. 41° W.	29	GLD
	W. Birch	2.5"	S. 62° E.	48	
12	W. Birch	3"	N. 91° W.	50	GLD
	W. Oak	5"	S. 42° E.	34	
9	W. Birch	5"	N. 12° E.	12	GLD
	W. Birch	10"	S. 76° E.	365	GLD
	Ash	13"	N 14° E	159	Corner in m. ddr of Road
B	Aspen	8	N 57° W	126	
	RPine	24	S 30° E	442	
	Ash	26"	S 36° W	58	GLD
9	Ash	6"	N 68° E		
	Ash	4"	S 25° E	100	GLD
10					
Mc	Ash	7"	N 58° W	124	GLD.
S+10	Ash	3"	N 12° E	340	
	Aspen	7"	S 53° W	223	GLD
16					
Mc	Ash	7"	N 85° W	66	GLD
at E	UPine	13"	S 37° E	184	
Mc E of 16					GLD

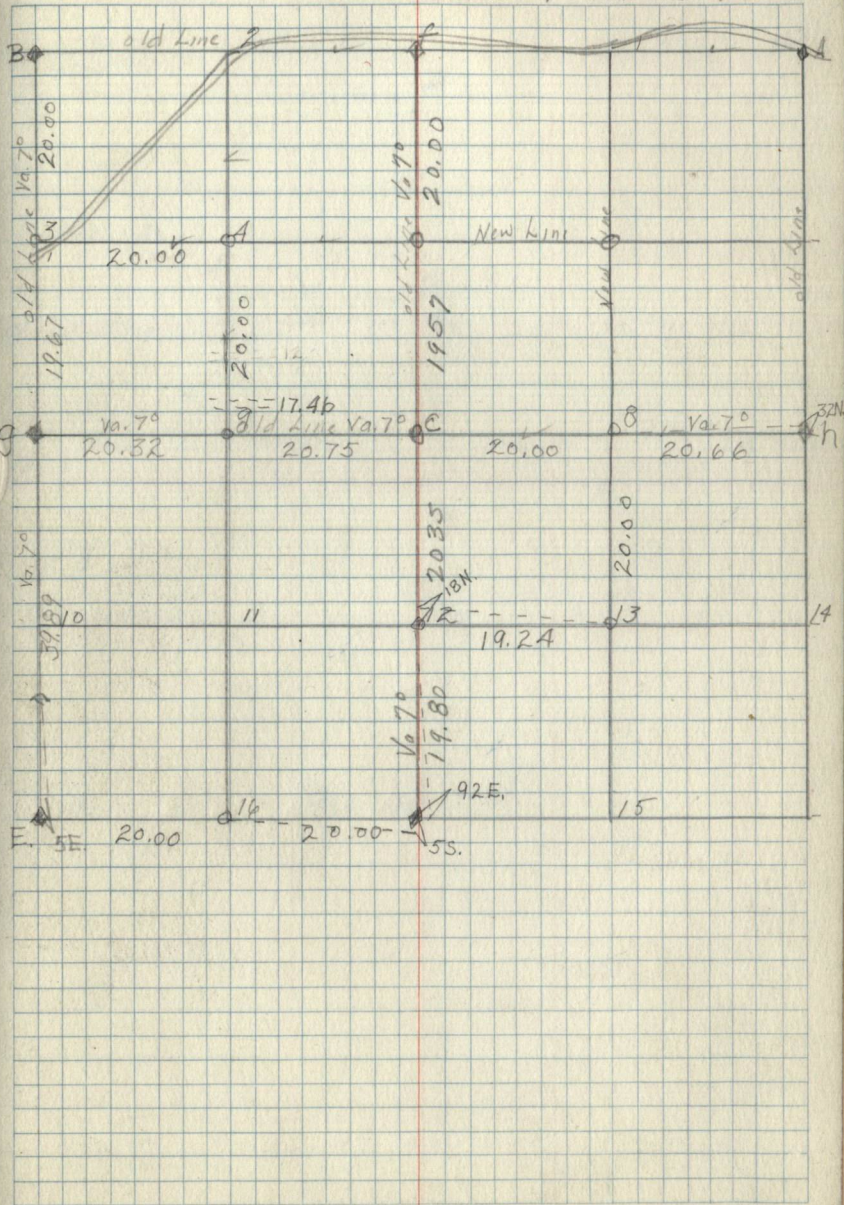
Sec 19 T146N R29W 47



corner Notes

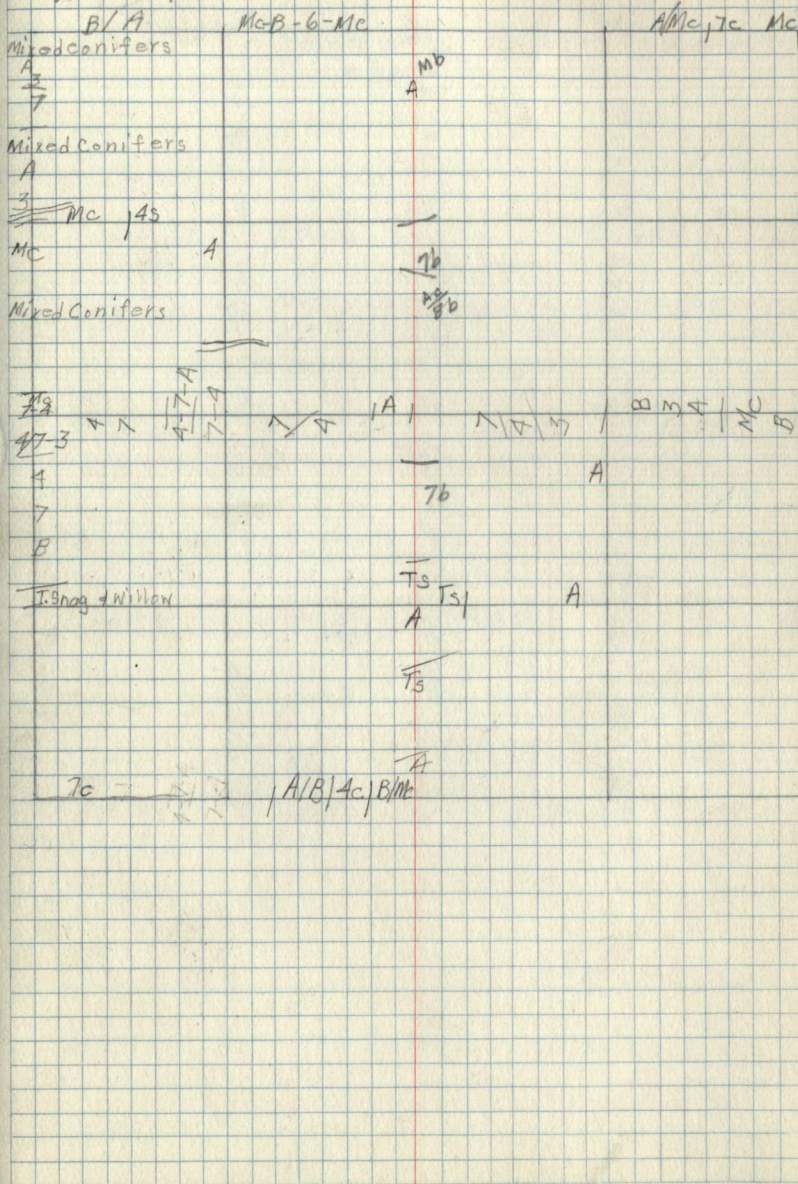
Cor.	Spec.	Dia.	Bearing	Dist.	Remarks
B	R. Pine	16"	S. 56° E.	12.7	
	Aspen	10"	N. 49° E.	23	
	B. Spruce	14"	N. 63° W.	1	
	Balsam	7"	S. 46° W.	76	
	Cedar	8"	N. 41° E.	69	
g	cedar	4"	N. 45° W.	4	
E	"Snag" Tam.	10"	S. 34° E.	44	
	W.oak	9"	S. 30° W.	75	
h	W.oak	9"	S. 67° E.	29	
	Ash	12"	N. 61° E.	91	
f	W. Birch	12"	S. 62° E.	21	
	W. pine	26"	S. 55° E.	62	
i	R. Pine	12"	N. 25.5° E.	40	

Sec 20 T146N R29W 49

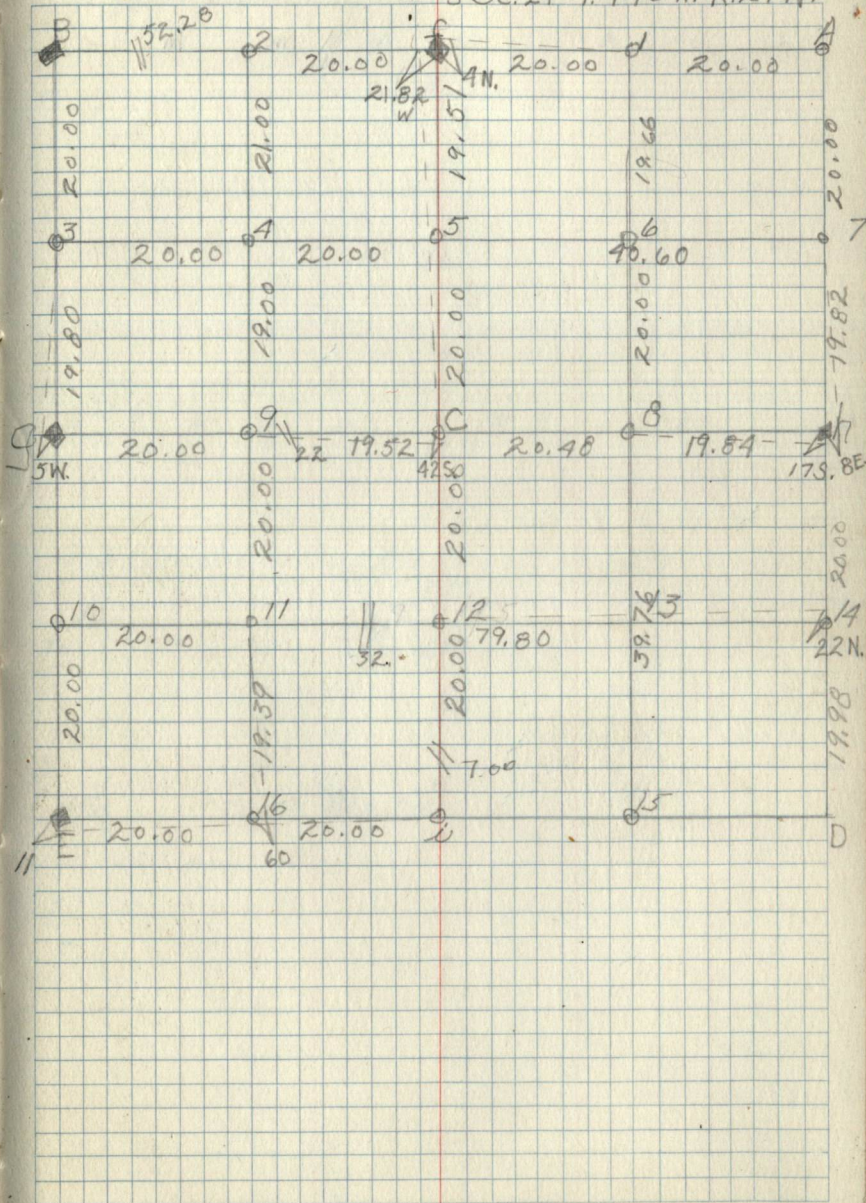


Type Map

Sec. 20 T146 R29 W 50

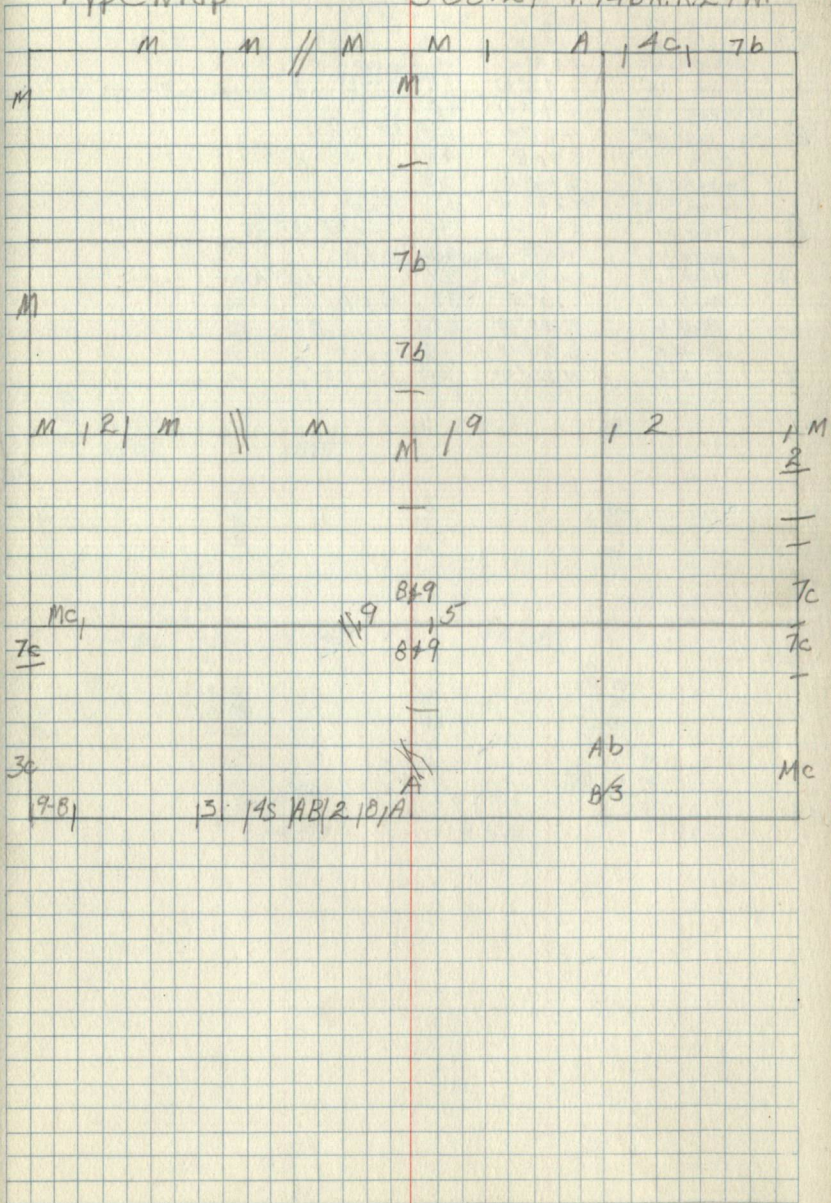


Sec. 21-T. 146 N. R. 29 W. 51



Type Map

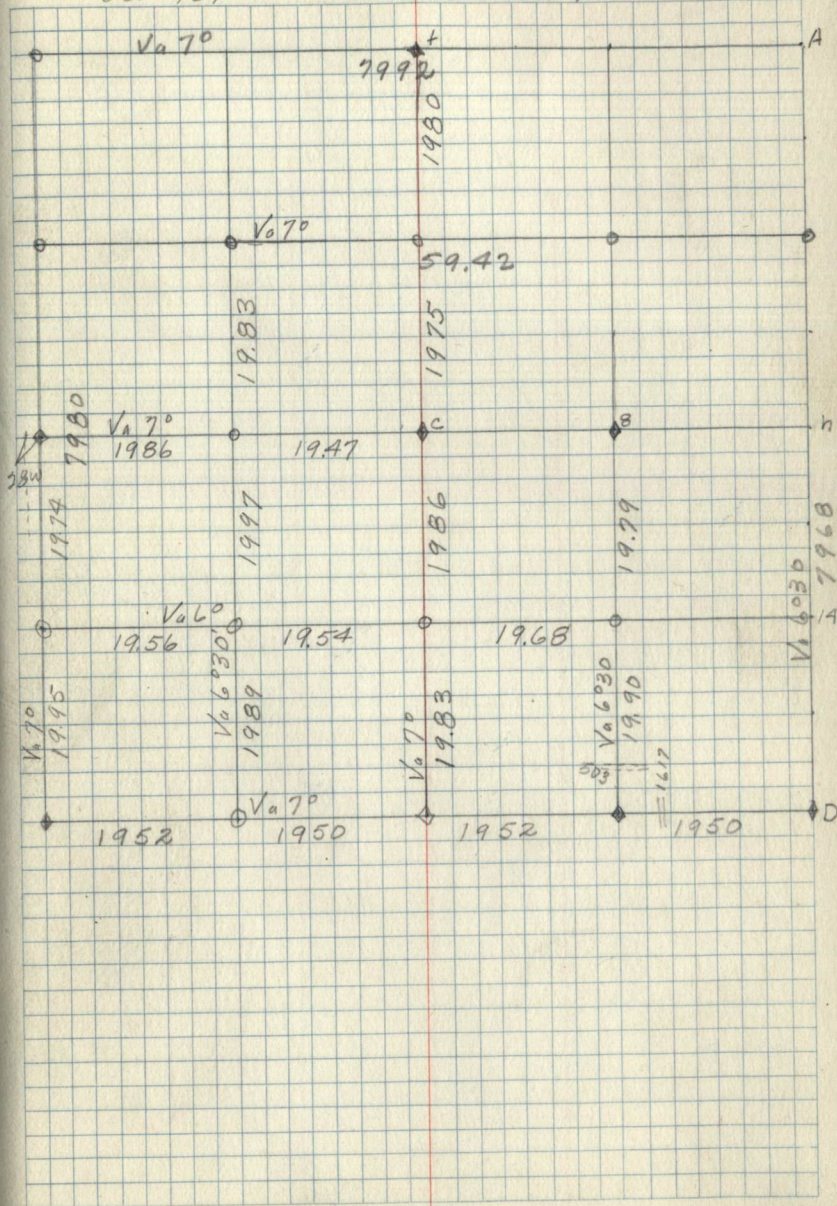
Sec. 21 - T. 146 N. R. 29 W. 52



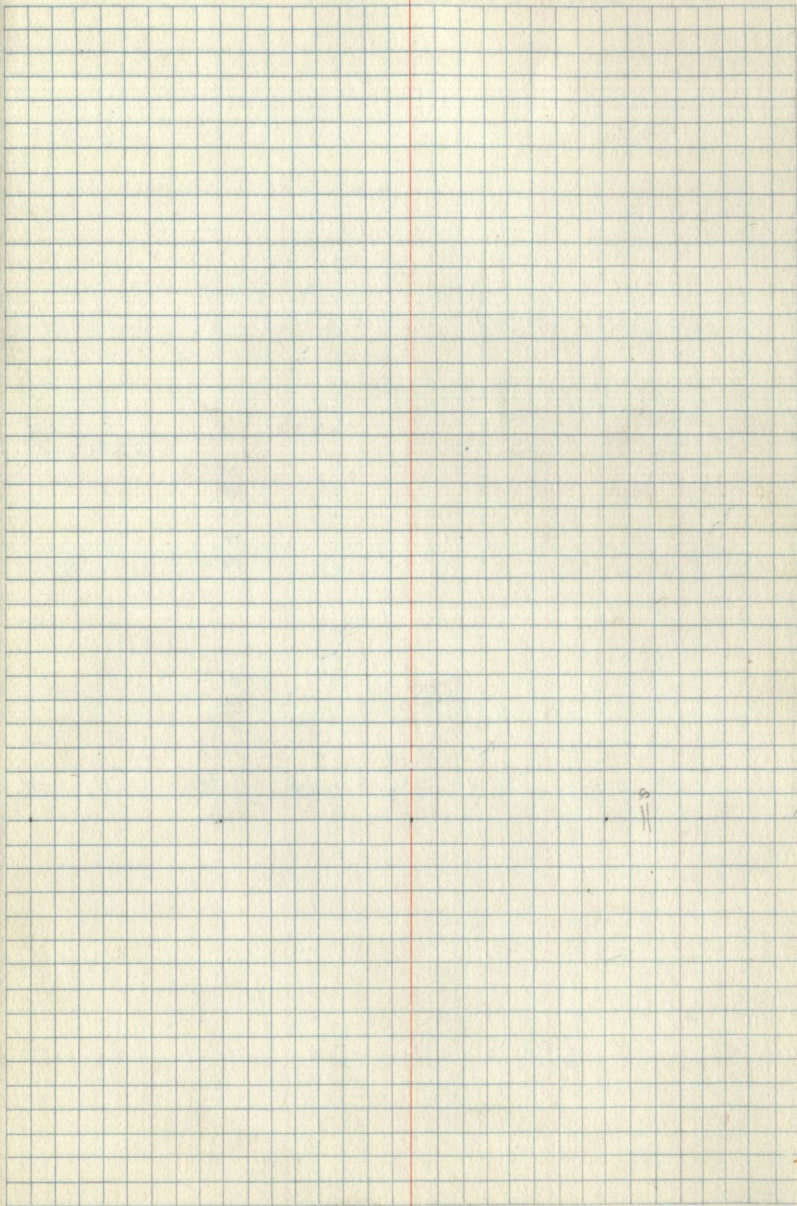
15	Aspen	12"	N46°W	26	GL.O
	Maple	8"	S38°E	29 1/2	GL.O 12"
	D. Birch	6"	N28°W	14	
i	Birch	12"	S 9 1/2°W	39	GL.O 8" Large w. Pine log. Near corner.
	Dw. Oak	20"	N 41°W	48	
E	Dw. Oak	14"	N 27°E	60	GL.O
	Oak	10"	S 70°E	48	
	woak	8"	S 26°W	28	
	woak	12"	N 73°W	51	GL.O
8	Maple	6"	S 10°W	31	set post
	Aspen	10"	S 50°E	24	GL.O
g	Birch	6"	S 47°W	26	10" high
	Maple	8"	S 70°E	36	GL.O
C.	Birch	6"	N 40°W	26	8"
	Maple	5"	S 30°W	19	GL.O
f	Birch	6"	N 26°W	20	8"

Oct 1939

Sec 22 T146N R29W 53



57



Sec 23 T146N R29W 55

1863 (Lake
2200
2264

1670
20.00

1670
10.00
Sugar
Lake

1670
1863

MCI 1

YB (Lake)

10 | 1 | 1M

No.

-10

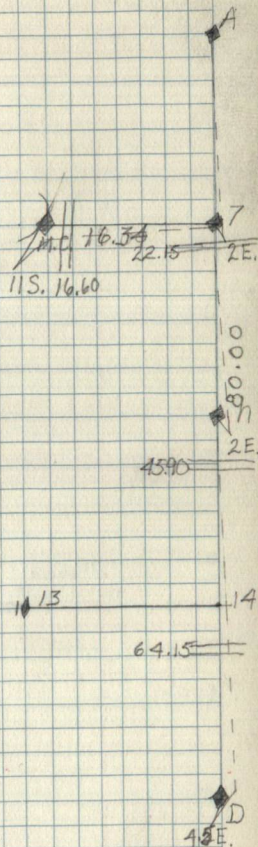
Lake

o

Corner Notes

Cor.	Spec.	Dia.	Bearing	Dist.	Remarks
	B. Ash	5"	N. 31° 30' W.	8	GLO.
7	B. Ash	8"	N. 62° E.	13.3	
	Maple	10"	N. 2° W.	43.5	GLO.
h	Maple	9.5"	S. 50° 30' E.	21.4	
M.C.	Elm	12"	S. 63° E.	111.5	GLO.
W. of 7	Cedar	7"	N. 7° 30' W.	61.5	

Sec. 29 - T. 146 N. R. 29 W. ⁵⁷

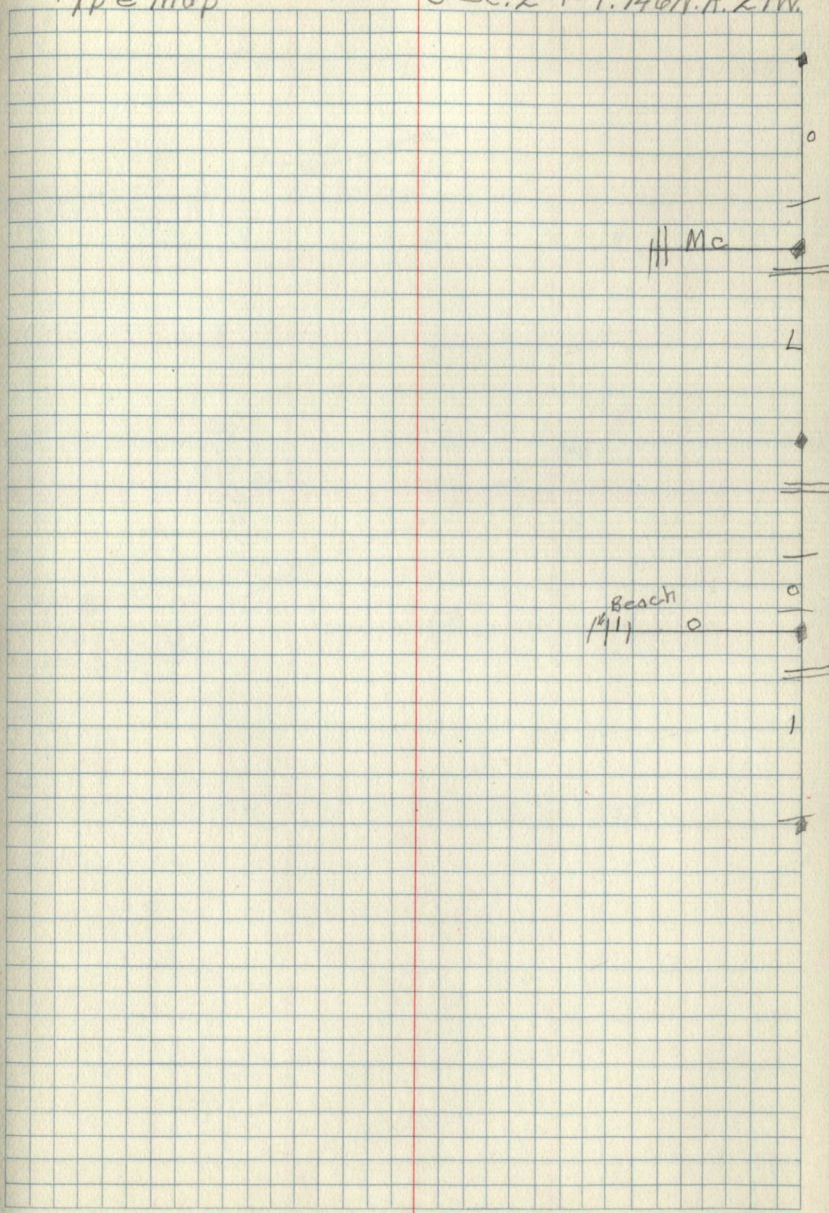


Type Map

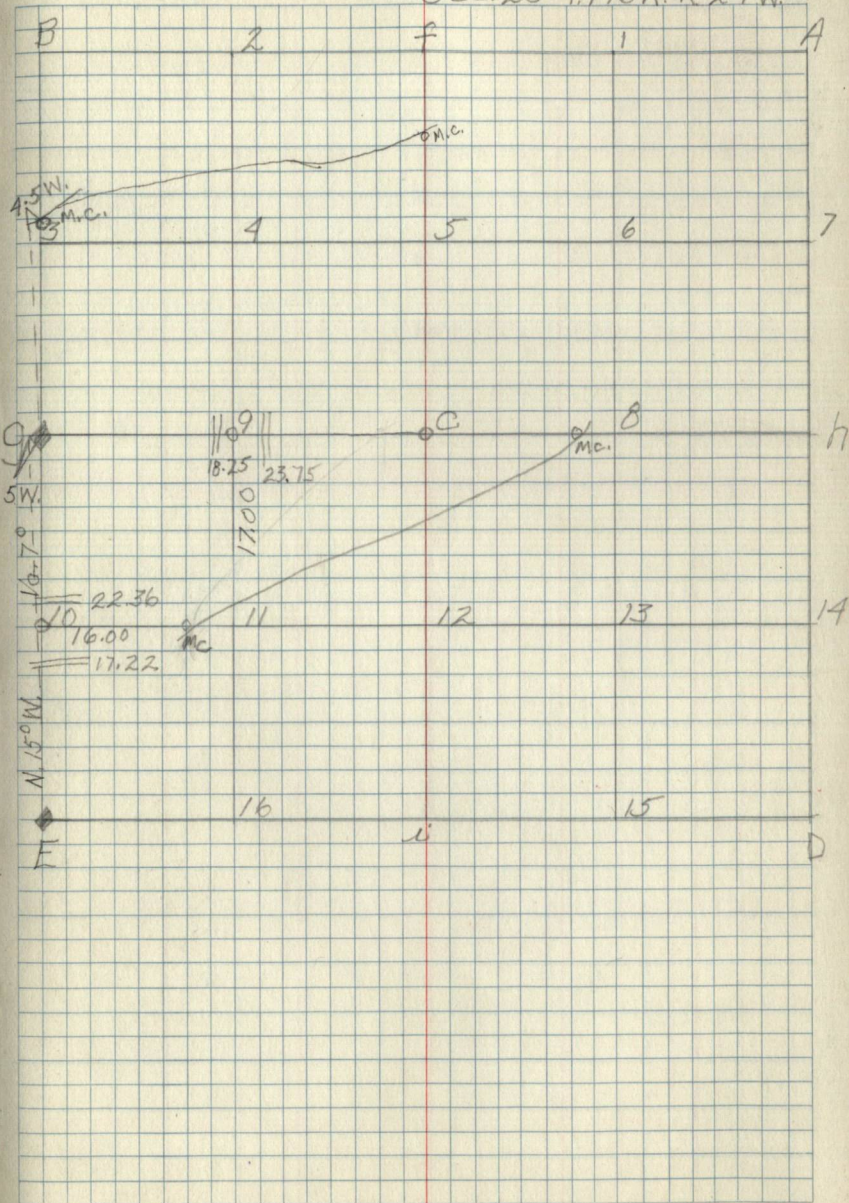
Sec. 24-T. 146N. R. 29W. 58

||| Mc

Beach
|||

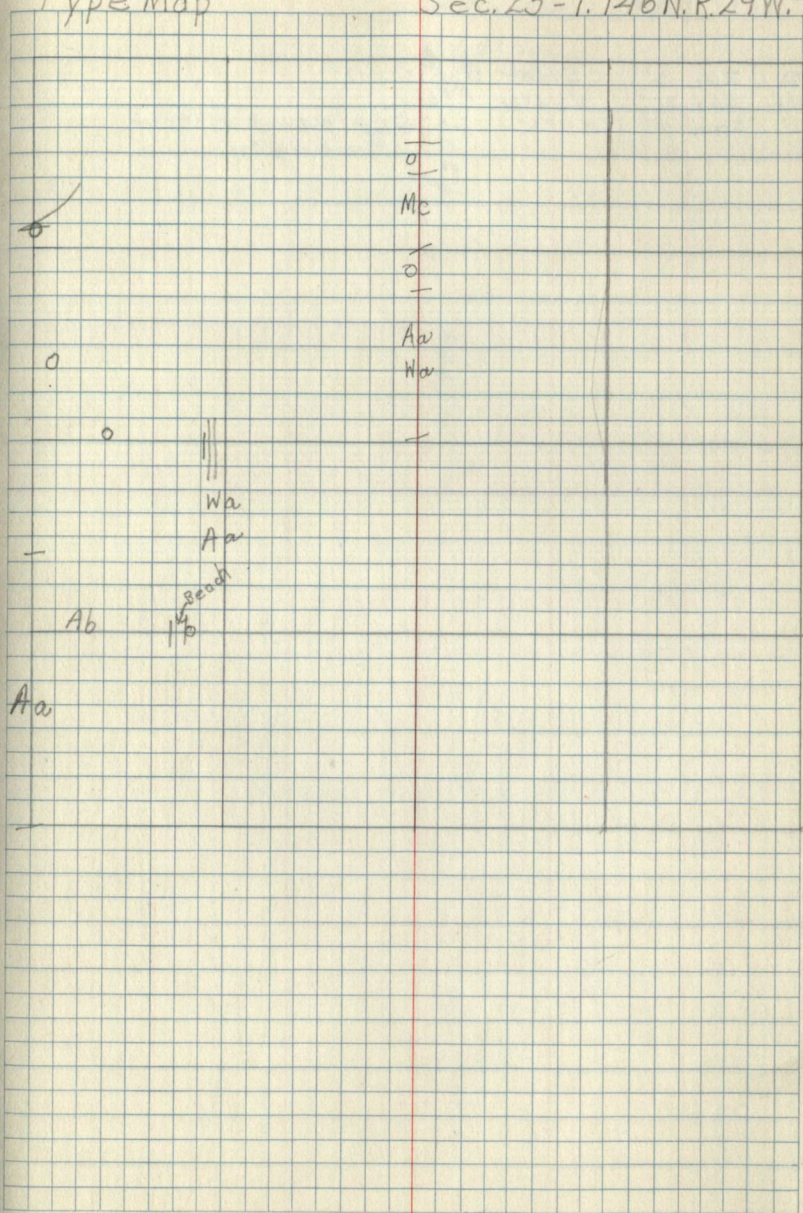


Sec. 25-T. 146N. R. 29W. 59



Type Map

Sec. 25-T. 146N. R. 29W. 60



Mc Elm 12" S57°W 165 GLO
Eoff Elm 20" N64°W 236
f. Asp 7" S11°W 60 G.L.O. 54 links North of
Temporary corner

Sec 26 T146N R29W 6D

1/7° Sugar
378 Lake

1/6°
1977

1985

Type Map

Sec 26 T146N R29W

62

• One Lake

Aspen
etc

—
1
—
PAC

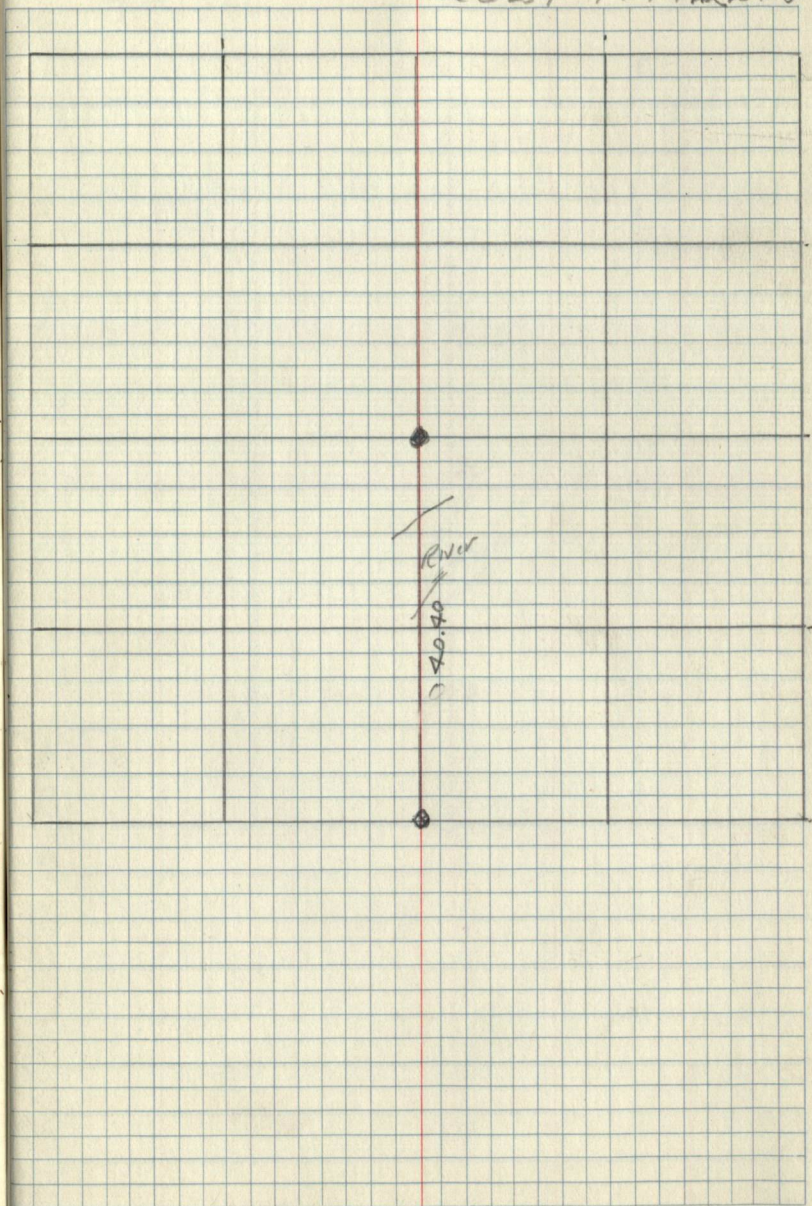
—
1
—
PAC

Pg 063-064
are blank

C-

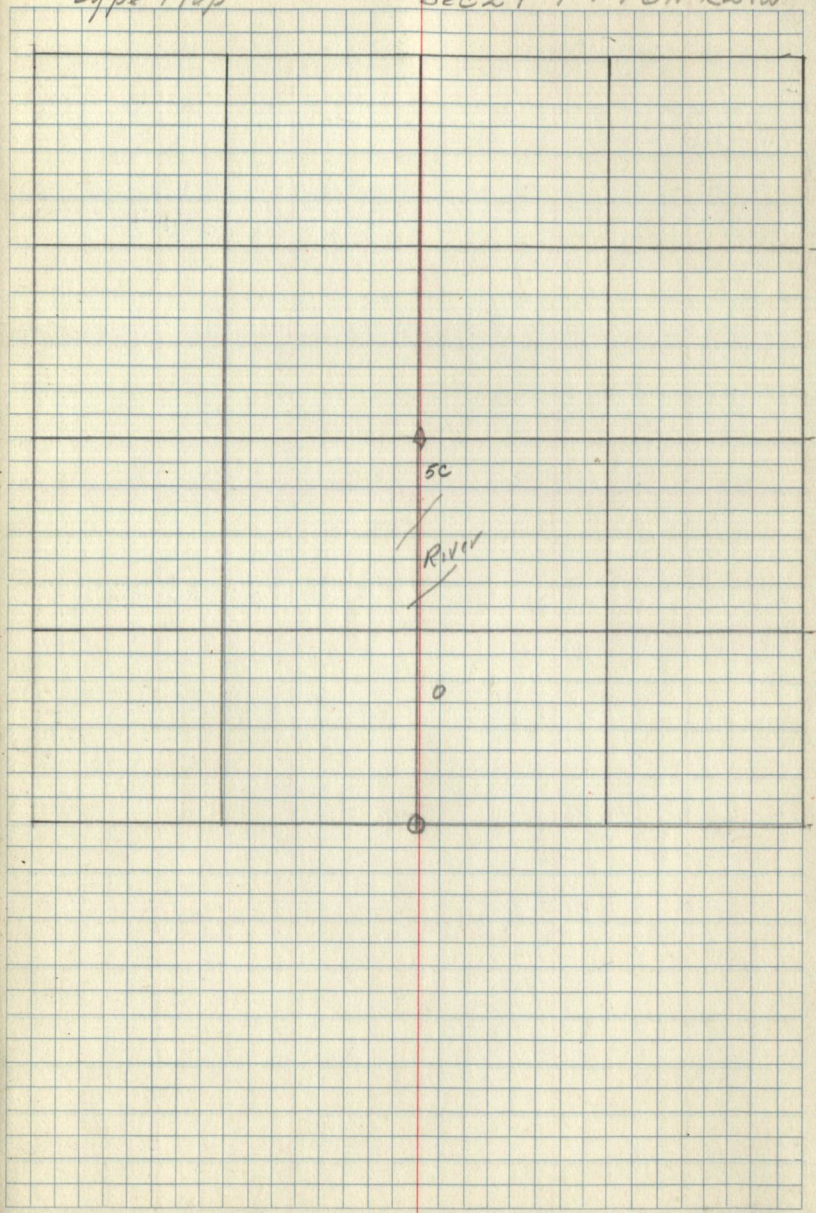
No Bearing Trees G.L.O

Sec 29 T149NR29W 67



type Map

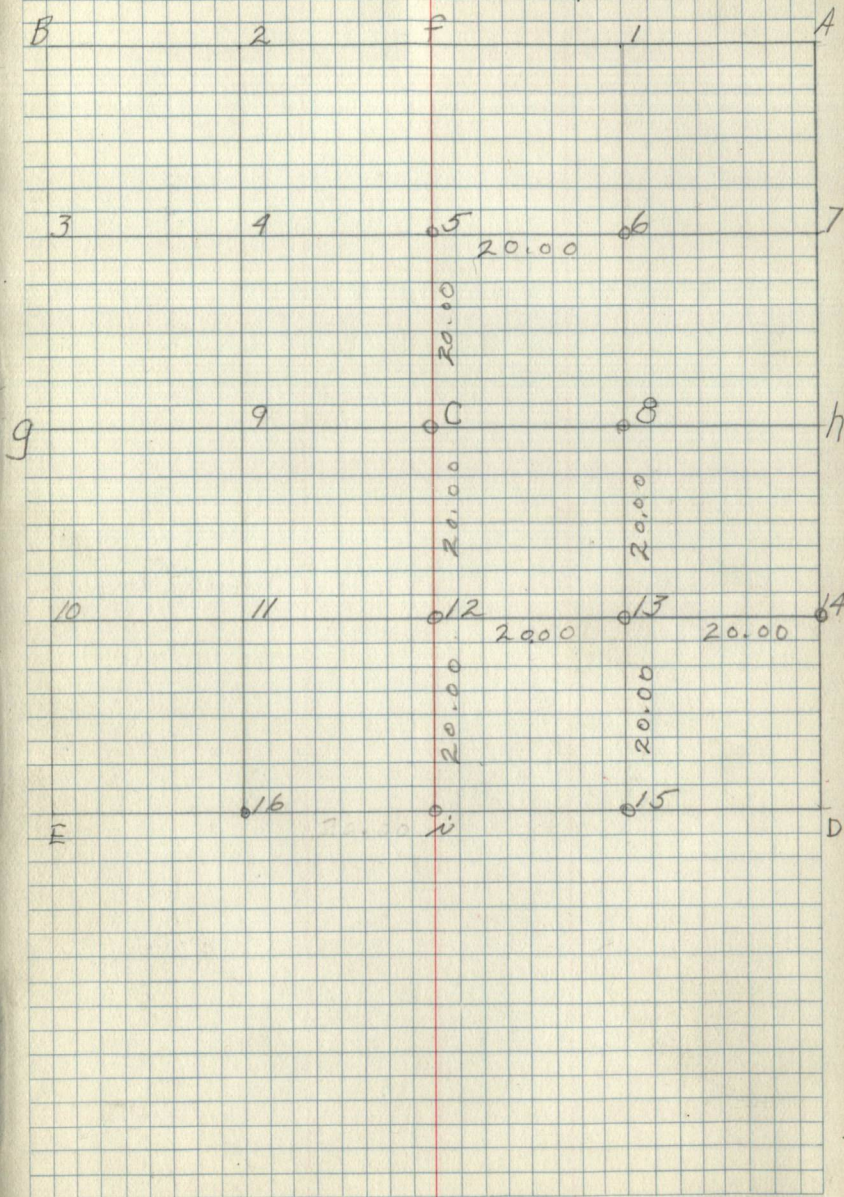
Sec 29 T146N R29W 68



Corner Notes

Cor.	Spec. dia.	Bearing	Dist.	Remarks
13	set 4" d. Pine post	as S E $\frac{1}{16}$ cor.		
12	set 4" d. Pine post	as S $\frac{1}{16}$ cor.		
5	set 4" Aspen post	as N. $\frac{1}{16}$ cor.		
6	set 4" d. Pine post	as NE $\frac{1}{16}$ cor.		

S. ec. 31. N. 146 N. R. 29 W 79

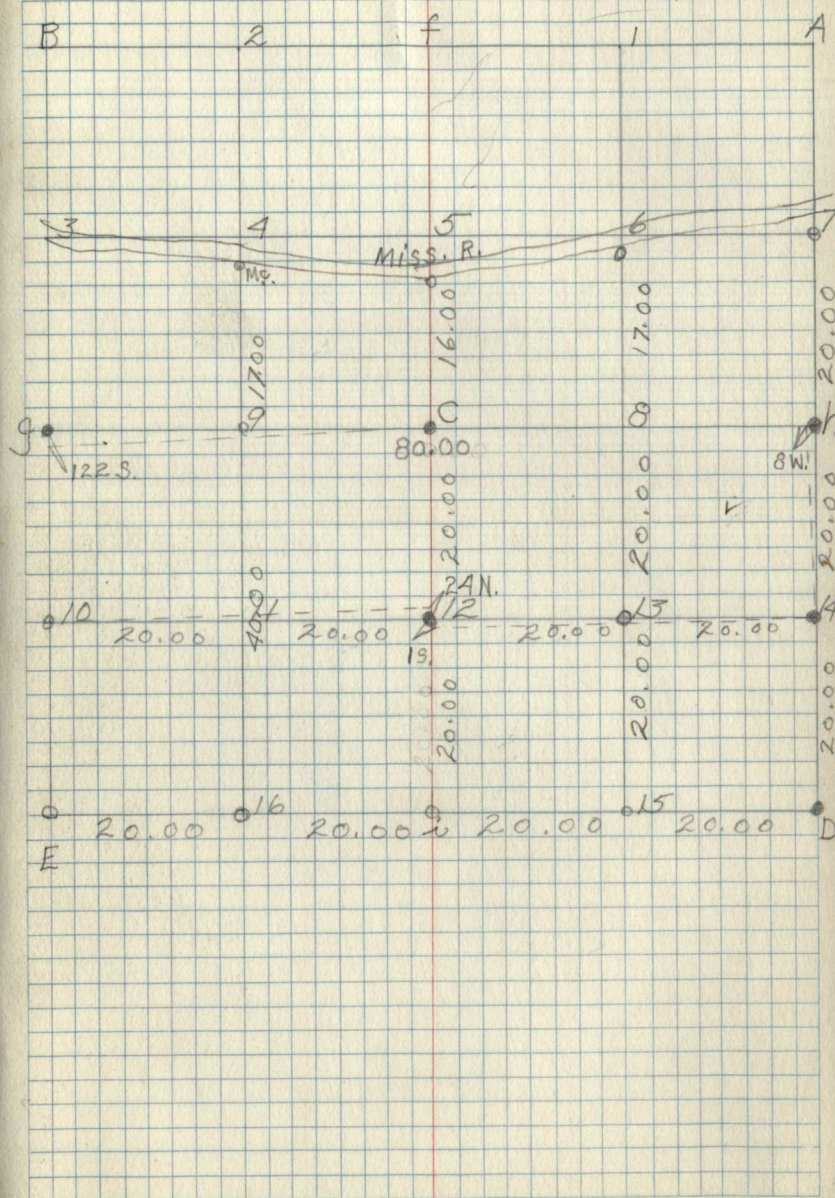


Sec. 31 - T. 146N. R. 29W ⁷⁸

Corner Notes

- | Cor. Spec. Dia. | Bearing | Dist. | Remarks |
|-----------------|-----------------------|--------------------------------|---------|
| 16 | Set 4" scrub oak post | as temp. W $\frac{1}{16}$ cor. | |
| 14 | Set 4" Jack pine post | as $\frac{1}{4}$ cor. | |
| 15 | Set 4" scrub oak post | as E. $\frac{1}{16}$ cor. | |
| D. | Set 4" Aspen post | as SE cor. | |
| 14 | Set 3" scrub oak post | as S $\frac{1}{16}$ cor. | |
| h | Set 4" Aspen post | as $\frac{1}{4}$ cor. | |
| 7. | Set 4" Scrub oak post | as N. $\frac{1}{16}$ cor. | |
| C. | Set 4" J. Pine post | as C $\frac{1}{4}$ cor. | |
| M.C.
N. of 9 | Set aspen stake | as Meander cor. | |
| 12. | Set 4" scrub oak post | as S $\frac{1}{16}$ cor. | |
| 13. | Set 4" J. Pine post | as S.E. $\frac{1}{16}$ cor. | |

75
Sec. 33-T. 146 N. R. 29 W.



Type Map

86
Sec. 33-T. 146 N. R. 29 W.

1 1 1 15 11 1 1 5a

Page 077 - End
are Blank