

FIELD COPY

T146N R26W

DILLZON
MINING

MINING
TRANSIT BOOK

No. 4221

CCC 23

EUGENE DIETZGEN CO.

DRAWING MATERIALS, MATHEMATICAL and SURVEYING INSTRUMENTS
Chicago New York San Francisco New Orleans Pittsburg Toronto

DISTANCES FROM CENTER OF ROADWAY FOR CROSS-SECTIONING.

Roadway 16 feet wide. Side Slopes 1 on 1.

For Single Track Embankment.

H	0	.1	.2	.3	.4	.5	.6	.7	.8	.9	H
0	8.0	8.1	8.2	8.3	8.4	8.5	8.6	8.7	8.8	8.9	0
1	9.0	9.1	9.2	9.3	9.4	9.5	9.6	9.7	9.8	9.9	1
2	10.0	10.1	10.2	10.3	10.4	10.5	10.6	10.7	10.8	10.9	2
3	11.0	11.1	11.2	11.3	11.4	11.5	11.6	11.7	11.8	11.9	3
4	12.0	12.1	12.2	12.3	12.4	12.5	12.6	12.7	12.8	12.9	4
5	13.0	13.1	13.2	13.3	13.4	13.5	13.6	13.7	13.8	13.9	5
6	14.0	14.1	14.2	14.3	14.4	14.5	14.6	14.7	14.8	14.9	6
7	15.0	15.1	15.2	15.3	15.4	15.5	15.6	15.7	15.8	15.9	7
8	16.0	16.1	16.2	16.3	16.4	16.5	16.6	16.7	16.8	16.9	8
9	17.0	17.1	17.2	17.3	17.4	17.5	17.6	17.7	17.8	17.9	9
10	18.0	18.1	18.2	18.3	18.4	18.5	18.6	18.7	18.8	18.9	10
11	19.0	19.1	19.2	19.3	19.4	19.5	19.6	19.7	19.8	19.9	11
12	20.0	20.1	20.2	20.3	20.4	20.5	20.6	20.7	20.8	20.9	12
13	21.0	21.1	21.2	21.3	21.4	21.5	21.6	21.7	21.8	21.9	13
14	22.0	22.1	22.2	22.3	22.4	22.5	22.6	22.7	22.8	22.9	14
15	23.0	23.1	23.2	23.3	23.4	23.5	23.6	23.7	23.8	23.9	15
16	24.0	24.1	24.2	24.3	24.4	24.5	24.6	24.7	24.8	24.9	16
17	25.0	25.1	25.2	25.3	25.4	25.5	25.6	25.7	25.8	25.9	17
18	26.0	26.1	26.2	26.3	26.4	26.5	26.6	26.7	26.8	26.9	18
19	27.0	27.1	27.2	27.3	27.4	27.5	27.6	27.7	27.8	27.9	19
20	28.0	28.1	28.2	28.3	28.4	28.5	28.6	28.7	28.8	28.9	20
21	29.0	29.1	29.2	29.3	29.4	29.5	29.6	29.7	29.8	29.9	21
22	30.0	30.1	30.2	30.3	30.4	30.5	30.6	30.7	30.8	30.9	22
23	31.0	31.1	31.2	31.3	31.4	31.5	31.6	31.7	31.8	31.9	23
24	32.0	32.1	32.2	32.3	32.4	32.5	32.6	32.7	32.8	32.9	24
25	33.0	33.1	33.2	33.3	33.4	33.5	33.6	33.7	33.8	33.9	25
26	34.0	34.1	34.2	34.3	34.4	34.5	34.6	34.7	34.8	34.9	26
27	35.0	35.1	35.2	35.3	35.4	35.5	35.6	35.7	35.8	35.9	27
28	36.0	36.1	36.2	36.3	36.4	36.5	36.6	36.7	36.8	36.9	28
29	37.0	37.1	37.2	37.3	37.4	37.5	37.6	37.7	37.8	37.9	29
30	38.0	38.1	38.2	38.3	38.4	38.5	38.6	38.7	38.8	38.9	30
31	39.0	39.1	39.2	39.3	39.4	39.5	39.6	39.7	39.8	39.9	31
32	40.0	40.1	40.2	40.3	40.4	40.5	40.6	40.7	40.8	40.9	32
33	41.0	41.1	41.2	41.3	41.4	41.5	41.6	41.7	41.8	41.9	33
34	42.0	42.1	42.2	42.3	42.4	42.5	42.6	42.7	42.8	42.9	34
35	43.0	43.1	43.2	43.3	43.4	43.5	43.6	43.7	43.8	43.9	35
36	44.0	44.1	44.2	44.3	44.4	44.5	44.6	44.7	44.8	44.9	36
37	45.0	45.1	45.2	45.3	45.4	45.5	45.6	45.7	45.8	45.9	37
38	46.0	46.1	46.2	46.3	46.4	46.5	46.6	46.7	46.8	46.9	38
39	47.0	47.1	47.2	47.3	47.4	47.5	47.6	47.7	47.8	47.9	39
40	48.0	48.1	48.2	48.3	48.4	48.5	48.6	48.7	48.8	48.9	40

Example—If point is 22.6 ft. above grade, how far should it be from center line to be a slope stake point? Ans. from Table 30.6. For same slopes but other widths of roadbed, correct above figures by one-half difference in width of roadbed; thus in example above, for 20 ft. roadbed distance will be $30.6 + (20 - 16) \div 2$ or 2 ft. added to 30.6 = 32.6. For slopes of 1 on 1½ see inside of back cover.

Copyright, 1914, by Eugene Dietzgen Co.

Table of Departure Corrections

Distance	15'	30'	45'	1'00'	1'15'	1'30'	1'45'	2'00'
	Error	Error	Error	Error	Error	Error	Error	Error
1 chain	—	—	.013	.017	.026	.036	.050	.054
20 "	.088	.18	.26	.35	.44	.52	.61	.70
40 "	.18	.35	.52	.70	.87	1.05	1.22	1.40
60 "	.26	.52	.79	1.05	1.31	1.57	1.83	2.10
80 "	.35	.70	1.05	1.40	1.74	2.10	2.44	2.80

Scanned

8-6-12

Planney

Original G.L.O. Survey by B.C. Baldwin

JUNE 8 - JUNE 24 - 1876

Var. - 10° 30'

Legend

- ◆ G.L.O. Corner positively identified
- ◇ Probable G.L.O. Corner
- F.S. Corner
- ⊙ County Corner
- ◇ Corner set in original survey
- ✕ Corner in Lake

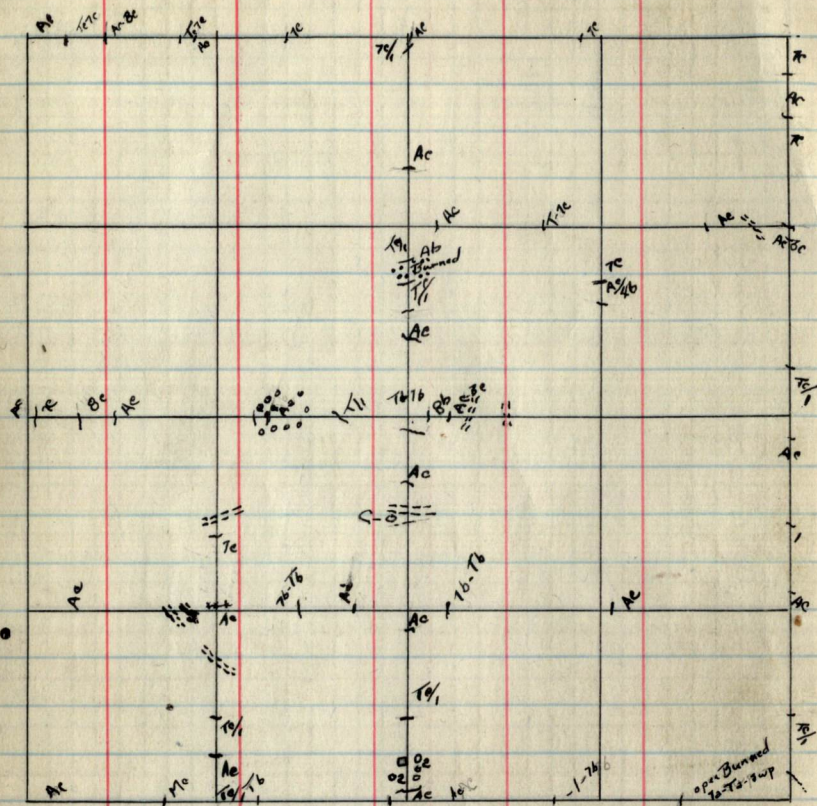
Legend For Type Map

- | | |
|-----------------------------|--|
| ○ Grassland | A Aspen |
| ○ ₁ Wild Pasture | B Balsam |
| ○ ₂ Hay Meadow | C Cultivated |
| 1 Brush | C ₁ Impoverished Field |
| 1 _s Swamp Brush | M Mixed Hardwood |
| 2 Muskeg | L Maple |
| 3 Birch | K Oak |
| 4 Cedar | R Ash |
| 5 Jack Pine | W ₁ Swamp |
| 6 White Spruce | 7b ₁ Non-productive - stagnated |
| 7 Black Spruce | W Water |
| T Tamarack | X Seed Trees |
| 8 Norway Pine | |
| 9 White Pine | |

- a Reproduction - up to 6'
- b Saplings - 6' in height to 4.5" D.b.h.
- c Poles - 4.5" D.b.h. to 9.5" D.b.h.
- Capitals - Sawtimber over 9.5" D.b.h.

- == Improved Roads
- == Woods Roads
- ~ Stream (Showing direction)
- ~ Body of Water
- ~ Pronounced Ridge

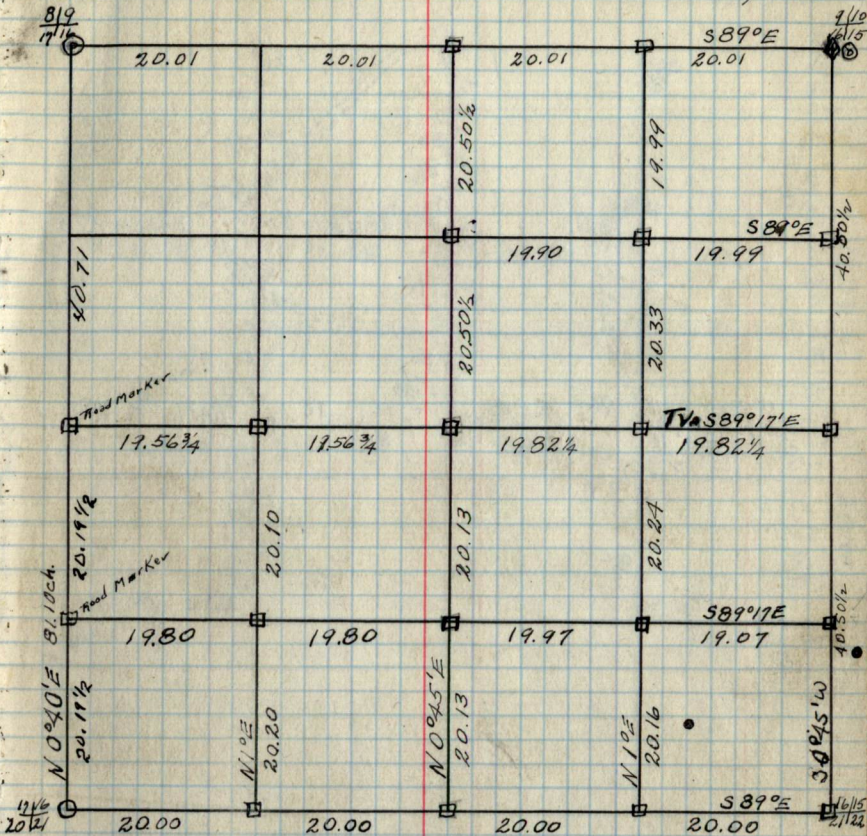
All data in red taken from original Survey



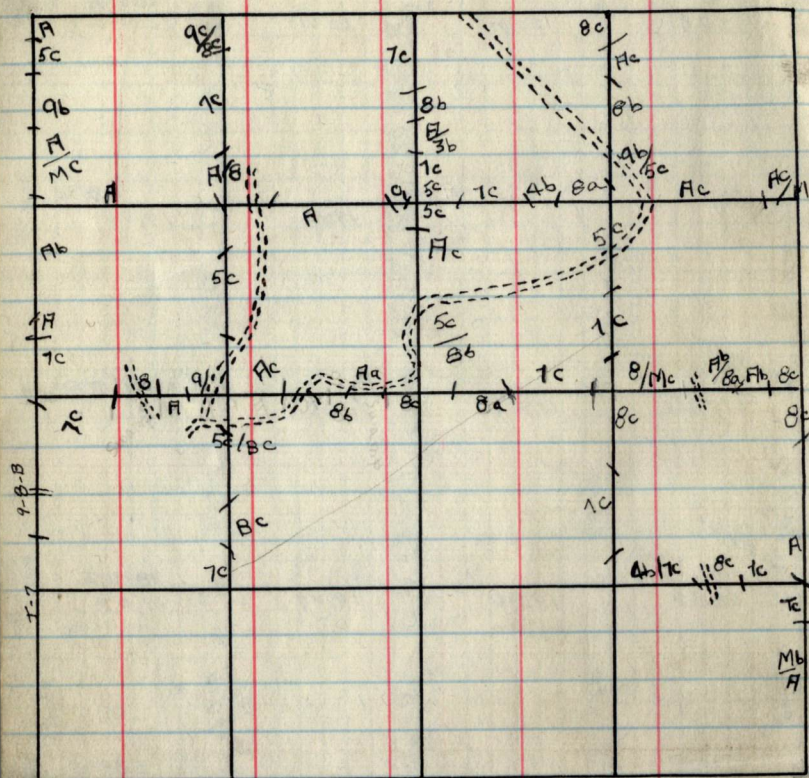
Sec 16 T146N R26W
By Balke

Date
Aug. 1486

Page 16
Mag Dec. N7°E



819 77.16	Aspen Stub	S 54°W	82	17 1/16	N.P. Tarn	24 West 10" N54°E	2.10 463/4
9110 16115	Aspen Dead	10" NR 9°E	.56 1/2				
17116 20121	Aspen Stub	10" S-40°W	1.16				

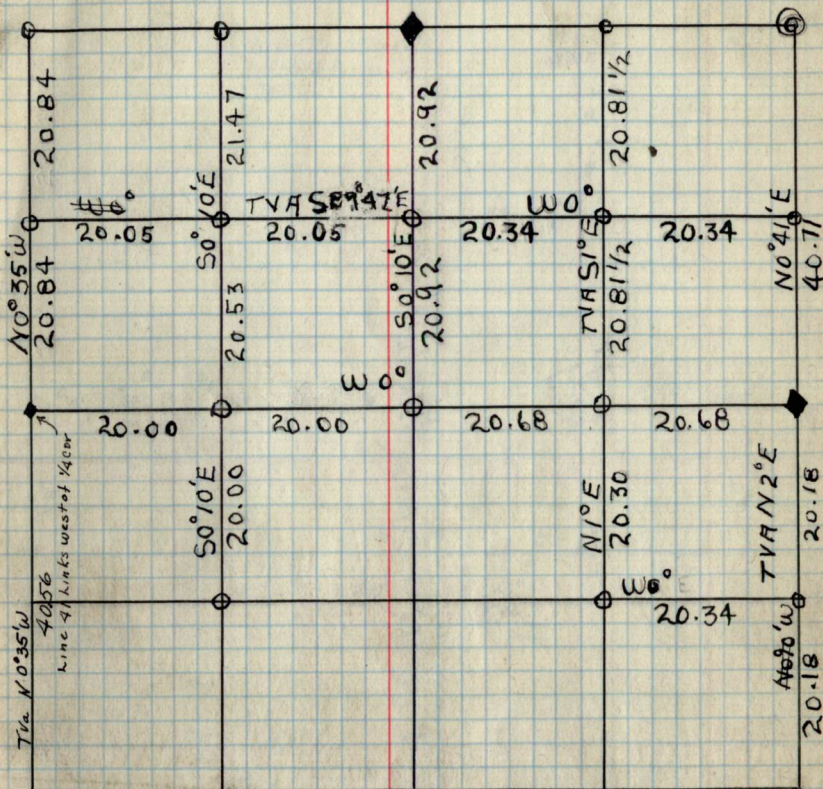


Sec 17 T146N R26W
By Balke
By Dickhaus

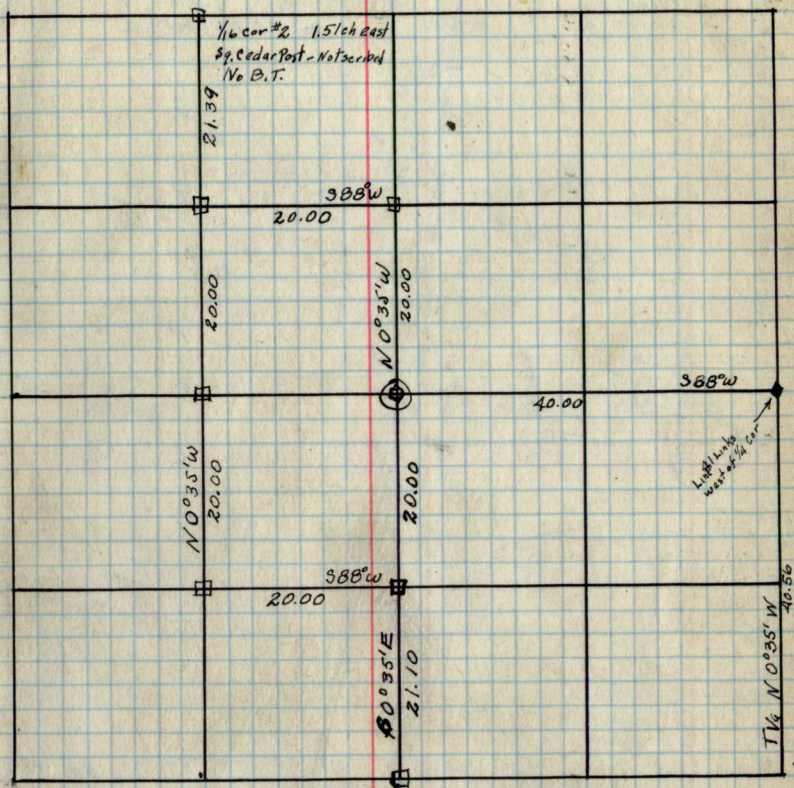
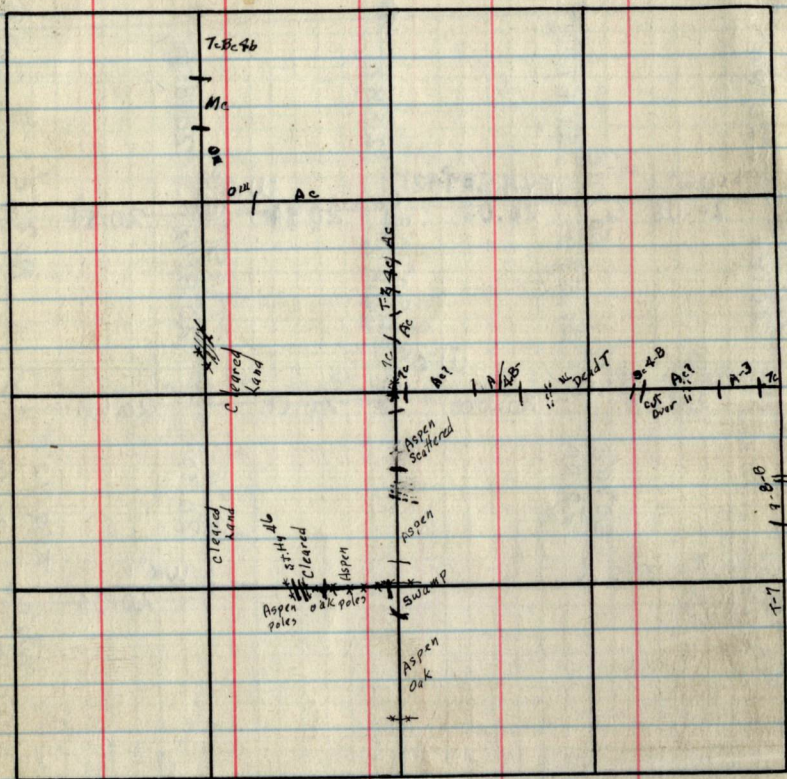
Date June 23
Date December 1931

Page 17

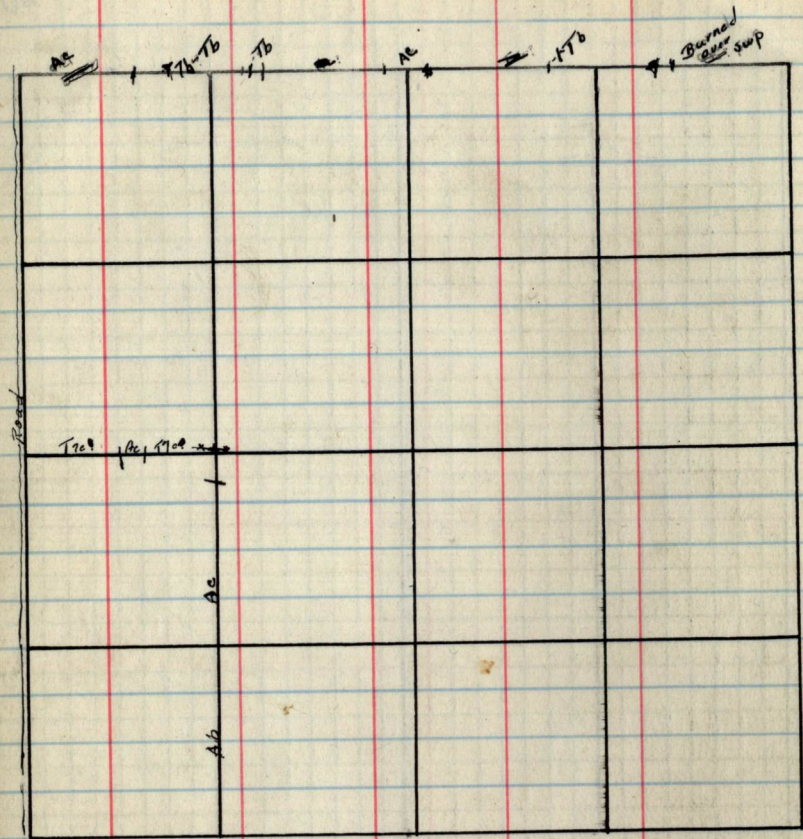
Mag Dec. N9E.



Bearing trees					Bearing trees				
Cor.	Spec.	DBH	Bear.	Dist.	Cor.	Spec.	DBH	Bear.	Dist.
1/16#9	ASP.	8"	S58°E	.164"	12	Dobl. Tam.	5"	N61°W	.29
1/16#14	Tam.	7"	Z80°W	.13	18	Ref. Spruce stump	7"	N45°E	.13
1/16#6	J.P.	7"	N22°W	.16		Spruce	7"	N41°W	.7 yellow tag
1/16#13	Tam.	15"	S86°E	.27	8	Tam.	5"	N35°E	.11
					17	Tam.	6"	S80°W	.45
					C/417	J.P.	9"	N7°W	.9 yellow tag
					1/16#11	Tam.	4"	S12°W	.13
					1/16#4	ASP.	10"	N37°W	.30
					1/16#5	J.P.	9"	N44°E	.26
					1/16#5	W.P.	15"	N20°E	.42
					1/16#8	ASP.	6"	N4°E	.15



Cor.	Bearing trees				Cor.	Bearing trees			
	Spec	DBH	Bear.	Dist.		Spec	DBH	Bear.	Dist.
					17	Dead Tam	5"	N 61° W	.29
					18	Rot Spruce Stump		N 45° E	.73
						Spruce	7"	N 41° W	.7 Yellow Tag
					c 1/4	set	N 21° W	8 Links To old corner	
					13	Marker Tree			
					19	Boxwood	16"	N 15° E	.35
						set wood from road		Boxwood under	

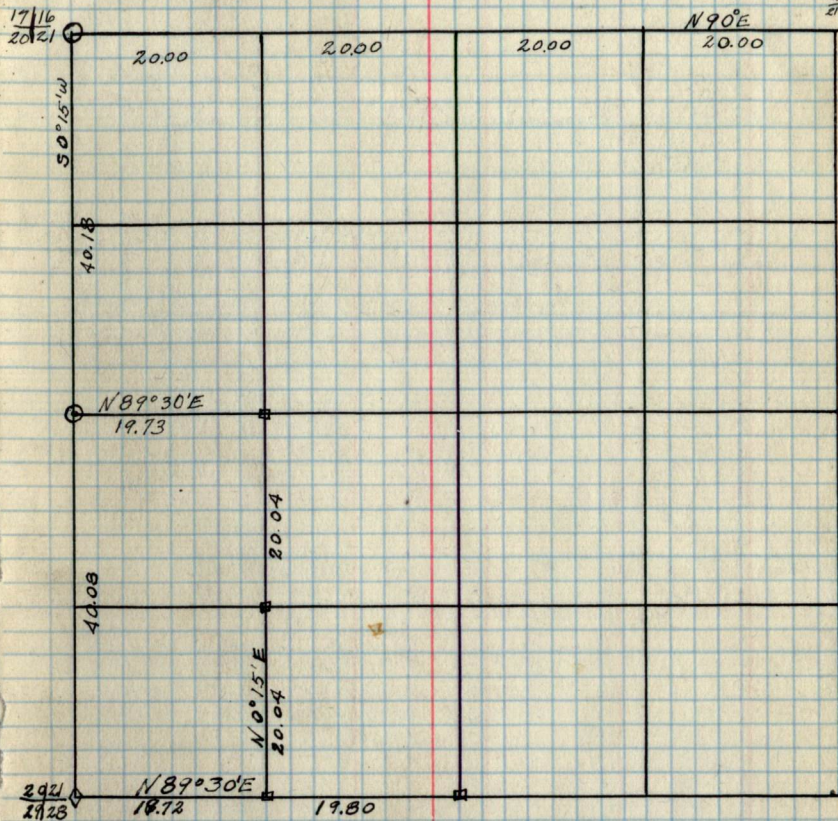


Remarks: W 1/4 cor. set 30 links west of center of Road.

Sec 21 T 146 N R 26 W
 By Balke
 Date June 9th 1936
 June 12
 Mag. Decl. N 7° E

Page 21

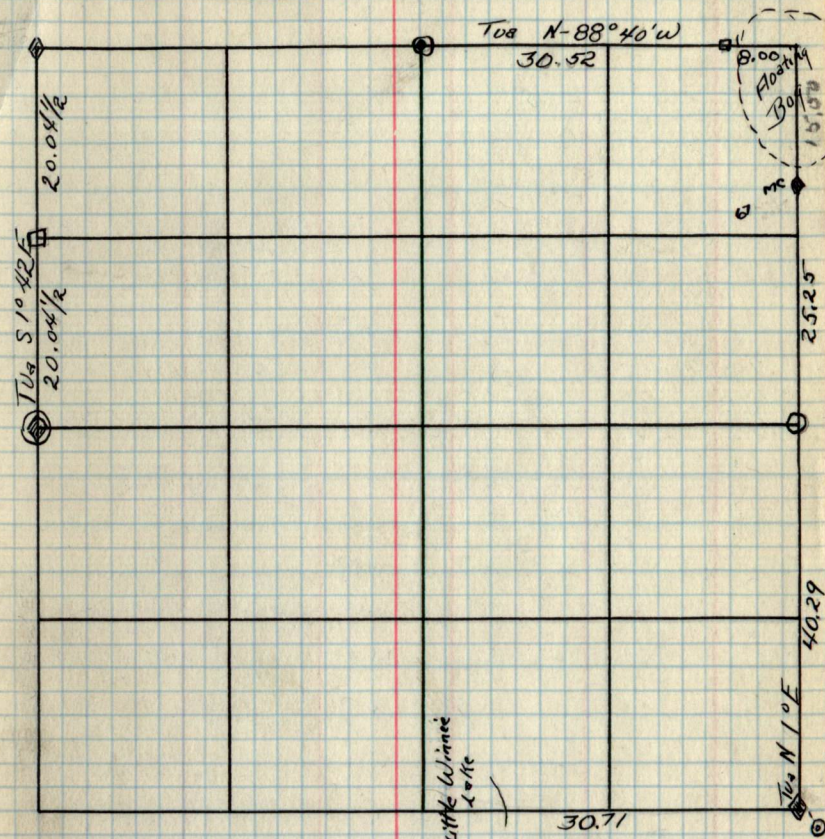
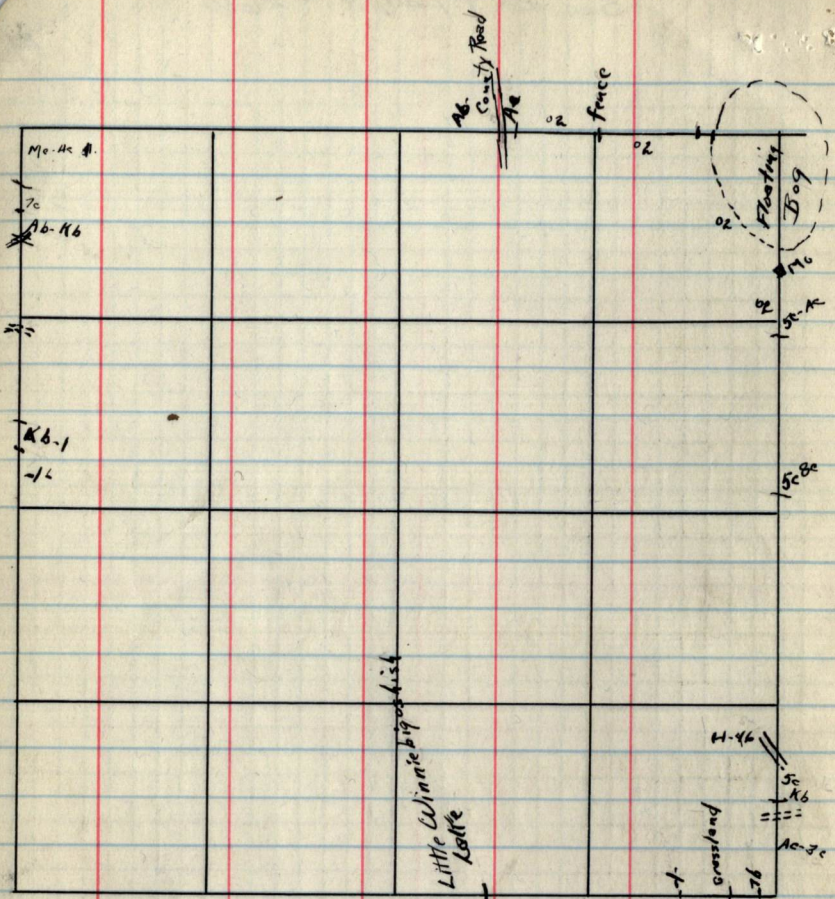
1415
2122



Cor.	Bearing trees				Cor.	Bearing trees			
	Spec.	DBH	Bear.	Dist.		Spec.	DBH	Bear.	Dist.
17116 2021	Aspen stub		S 40 W	1.16	21 28	Yellow Tag	N 36° 40' E	.62	
20121 29128	Balsam Aspen	6 16"	S 69° W S 46° W	.64 .84	20 21	Aspen center of Road	N 75° W N 90° E	.35 .30	
16115 21122	No trees scribed - set Cor by intersection								

Sec. 29 T146N R26W

29



24/19	R. Oak	6"	S 64° 30' W	58 1/2	30/29	J Pine	9"	S 60' W	43 1/2
25/30	N. P.	20"	N 80° W	43 1/2		J Pine	7"	S 36° E	59.8
	Aspen	10"	S 17° 30' E	41 3/4		Mc- Stump Hole		S 26° 30' W	90
30/29	Elm -	7"	S-68° E	25 LKs		Mc Post Scribed		Good Condition	
31/32	D-birch	20"	S-70° E	.14	25/30	Oak	10	S 68° 50'	
	Spruce	24"	S-68 W	.47		Oak	16	S 70° 5' E	
	Dead Elm	5"	N 58° W	.82					
	D-birch	8"	N 70° E	.47					
	birch	9"	N. 24° W	23.5 LKs					
	Elm stump	4"	S-44° W	.30					

Walter H. Berke

11

Conner Legend:

◆ G.L.O. Corner

◆ Probable G.L.O.

⊕ F.S. Corner

⊕ County Corner

DISTANCES FROM CENTER OF ROADWAY FOR CROSS-SECTIONING. Roadway 16 feet wide. Side Slopes 1 on 1½ For Single Track Embankment.

H	0	.1	.2	.3	.4	.5	.6	.7	.8	.9	H
0	8.0	8.2	8.3	8.5	8.6	8.8	8.9	9.1	9.2	9.4	0
1	9.5	9.7	9.8	10.0	10.1	10.3	10.4	10.6	10.7	10.9	1
2	11.0	11.2	11.3	11.5	11.6	11.8	11.9	12.1	12.2	12.4	2
3	12.5	12.7	12.8	13.0	13.1	13.3	13.4	13.6	13.7	13.9	3
4	14.0	14.2	14.3	14.5	14.6	14.8	14.9	15.1	15.2	15.4	4
5	15.5	15.7	15.8	16.0	16.1	16.3	16.4	16.6	16.7	16.9	5
6	17.0	17.2	17.3	17.5	17.6	17.8	17.9	18.1	18.2	18.4	6
7	18.5	18.7	18.8	19.0	19.1	19.3	19.4	19.6	19.7	19.9	7
8	20.0	20.2	20.3	20.5	20.6	20.8	20.9	21.1	21.2	21.4	8
9	21.5	21.7	21.8	22.0	22.1	22.3	22.4	22.6	22.7	22.9	9
10	23.0	23.2	23.3	23.5	23.6	23.8	23.9	24.1	24.2	24.4	10
11	24.5	24.7	24.8	25.0	25.1	25.3	25.4	25.6	25.7	25.9	11
12	26.0	25.2	26.3	26.5	26.6	26.8	26.9	27.1	27.2	27.4	12
13	27.5	27.7	27.8	28.0	28.1	28.3	28.4	28.6	28.7	28.9	13
14	29.0	29.2	29.3	29.5	29.6	29.8	29.9	30.1	30.2	30.4	14
15	30.5	30.7	30.8	31.0	31.1	31.3	31.4	31.6	31.7	31.9	15
16	32.0	32.2	32.3	32.5	32.6	32.8	32.9	33.1	33.2	33.4	16
17	33.5	33.7	33.8	34.0	34.1	34.3	34.4	34.6	34.7	34.9	17
18	35.0	35.2	35.3	35.5	35.6	35.8	35.9	36.1	36.2	36.4	18
19	36.5	36.7	36.8	37.0	37.1	37.3	37.4	37.6	37.7	37.9	19
20	38.0	38.2	38.3	38.5	38.6	38.8	38.9	39.1	39.2	39.4	20
21	39.5	39.7	39.8	40.0	40.1	40.3	40.4	40.6	40.7	40.9	21
22	41.0	41.2	41.3	41.5	41.6	41.8	41.9	42.1	42.2	42.4	22
23	42.5	42.7	42.8	43.0	43.1	43.3	43.4	43.6	43.7	43.9	23
24	44.0	44.2	44.3	44.5	44.6	44.8	44.9	45.1	45.2	45.4	24
25	45.5	45.7	45.8	46.0	46.1	46.3	46.4	46.6	46.7	46.9	25
26	47.0	47.2	47.3	47.5	47.6	47.8	47.9	48.1	48.2	48.4	26
27	48.5	48.7	48.8	49.0	49.1	49.3	49.4	49.6	49.7	49.9	27
28	50.0	50.2	50.3	50.5	50.6	50.8	50.9	51.1	51.2	51.4	28
29	51.5	51.7	51.8	52.0	52.1	52.3	52.4	52.6	52.7	52.9	29
30	53.0	53.2	53.3	53.5	53.6	53.8	53.9	54.1	54.2	54.4	30
31	54.5	54.7	54.8	55.0	55.1	55.3	55.4	55.6	55.7	55.9	31
32	56.0	56.2	56.3	56.5	56.6	56.8	56.9	57.1	57.2	57.4	32
33	57.5	57.7	57.8	58.0	58.1	58.3	58.4	58.6	58.7	58.9	33
34	59.0	59.2	59.3	59.5	59.6	59.8	59.9	60.1	60.2	60.4	34
35	60.5	60.7	60.8	61.0	61.1	61.3	61.4	61.6	61.7	61.9	35
36	62.0	62.2	62.3	62.5	62.6	62.8	62.9	63.1	63.2	63.4	36
37	63.5	63.7	63.8	64.0	64.1	64.3	64.4	64.6	64.7	64.9	37
38	65.0	65.2	65.3	65.5	65.6	65.8	65.9	66.1	66.2	66.4	38
39	66.5	66.7	66.8	67.0	67.1	67.3	67.4	67.6	67.7	67.9	39
40	68.0	68.2	68.3	68.5	68.6	68.8	68.9	69.1	69.2	69.4	40

Example—If point is 22.6 ft. above grade, how far should it be from center line to be a slope stake point? Ans. from Table 41.9. For same slopes but other widths of roadbed correct above figures by one-half difference in width of roadbed; thus in example above for 20 ft. roadbed distance will be $41.9 + (20 - 16) \div 2$ or 2 ft. added to 41.9 = 43.9. For slopes of 1 on 1 see inside of front cover.

Original G.L.O. Corners

Cor.	Spec.	D.b.h.	Bear.	Dist.
34/31 1/6				
3/6 1	Aspen	4"	N54°W	.80
	Tam	4"	S26°W	.17
35/36 2/1	Cedar	6"	S57°E	.38
	Balsam	4"	N42°E	.28
	Cedar	10"	N65°W	.28
	Cedar	12"	S35°W	.12
2/1				
2/1 11/12				
1/12				
1/6 12/7	W. Pine	5"	N30°E	.20
	Tam	5"	S30°E	.18
	Cedar	5"	S30°W	.16
	Cedar	5"	N31°W	.17
1/6	Tam	8"	N65°W	.29
	Tam	8"	S25°E	.11
MC. 1	Tam &	6"	N89 1/4°W	13.68
MC. 2	Aspen	6"	N87°E	2.95
	Aspen	13"	S23°E	3.30

B.T.'s Fovad and W.T.'s Set

Cor. Spec. D.b.h. Bear. Dist. B.T. or W.T.

Sec. 1 T146N-R25W

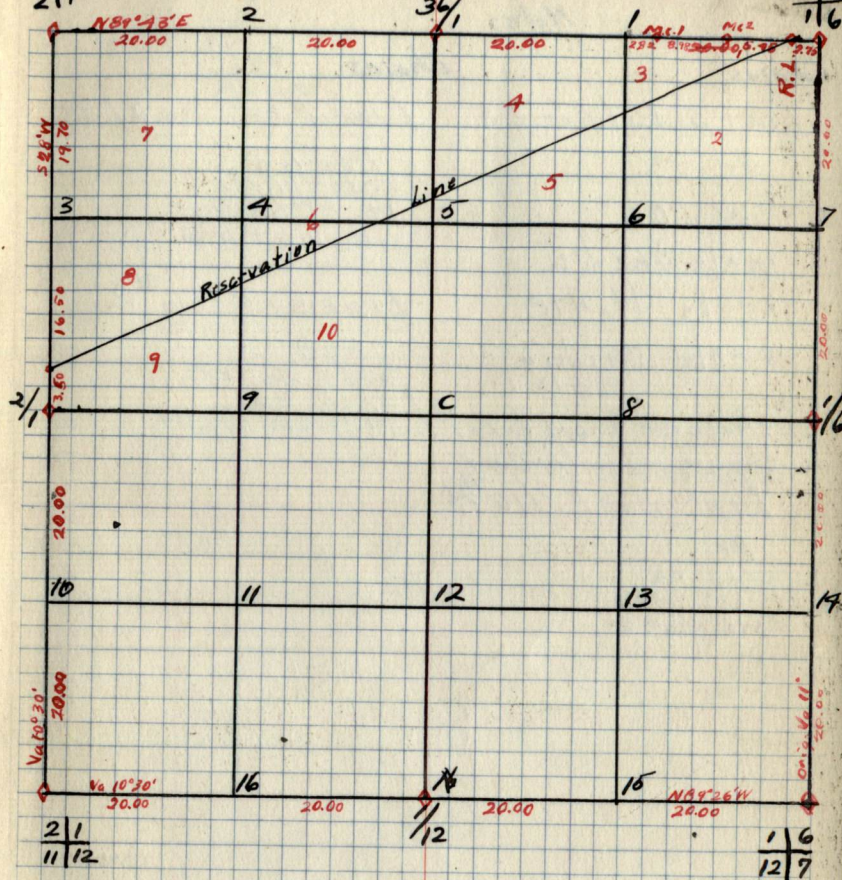
35/36

2/1

34/1

36/31

1/6



B.T.'s + W.T.'s (cont.)

Cor. Spec. D.b.h. Dist. B.T. or W.T.

Notes

Chains

Line S. Bet. sec. 2-3

Ac. Bb

60 ch. 02

10 chs. Abc Bb

15 chs. ff. 472

Rocks Bridge

Ab Bb

29.50 chs. trail to left. 19.50 chs. // 16 #4

39.50 chs. // 16 #4

LINE W. OF // 16 #4

A2

5 chs. 02

13 chs. Ab

Rocks // 16 #3

Chains

Line E. Bet. Sec. 2/35

Ac. Bb

5 chs. Abc Bb

17 Ab

Rocks // 16 #2

Line S. of // 16 #10

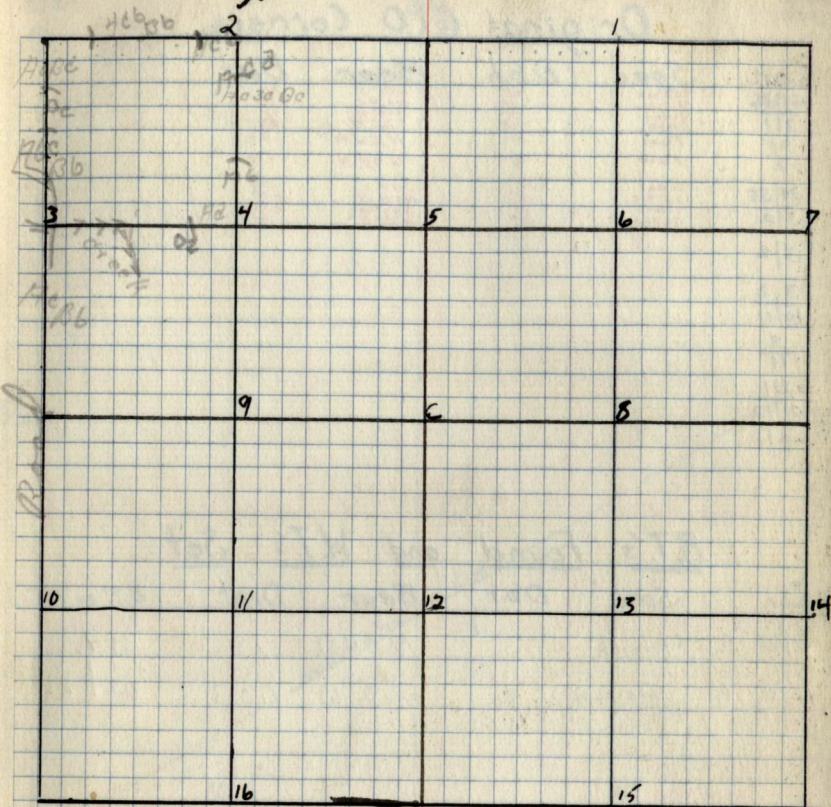
Ac3

4 chs. Bc 3072

15 chs. Pa

19.50 chs. // 16 #4

Type + Cultural Map



Remarks:

2.

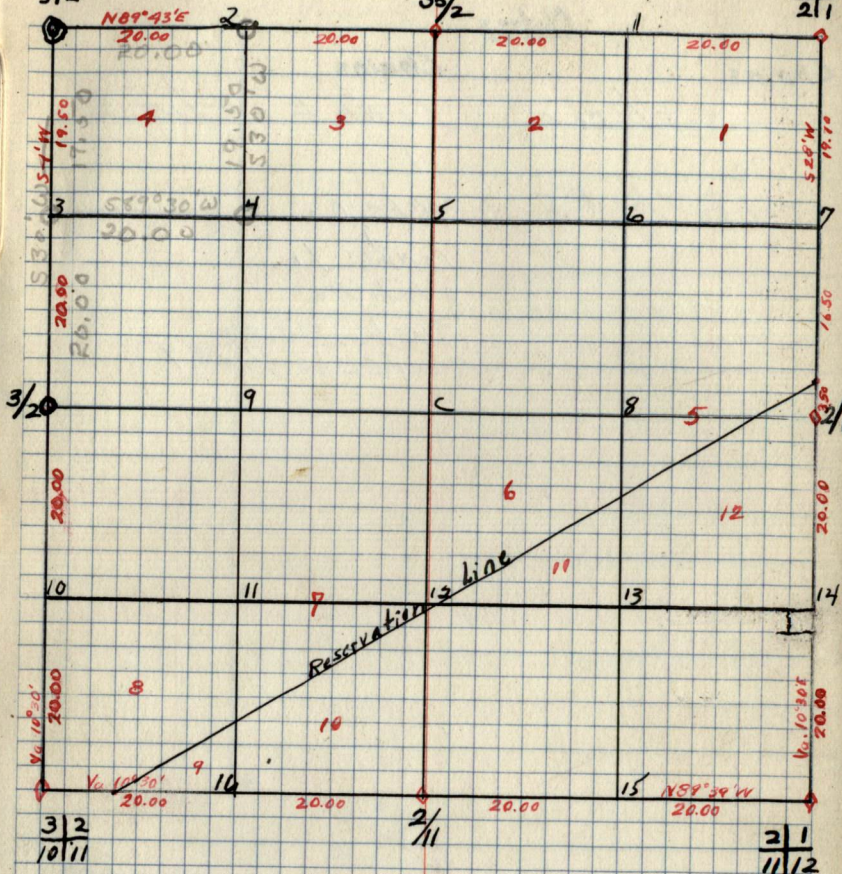
Original G.L.O. Corners

Cor.	Spec.	D.b.h.	Bear.	Dist.
35/36	Cedar	6"	S 57° E	.38
2/1	Balsam	6"	N 12° E	.23
35	Cedar	12"	N 66° W	.28
2	Fam	4"	S 25° W	.28
	Fam	6"	N 56° W	.20
			S 40° W	.19
34/35	Cedar	10"	S 47° E	.84
3/2	Spruce	6"	N 120° W	2.00
	Cedar	6"	S 89° W	2.90
	Cedar	12"	N 32° E	.69
3/2				
3/2				
10/11				
2/11				
2/11				
11/12				
2/1				

B.T.'s Found and W.T.'s Set

Cor.	Spec.	D.b.h.	Bear.	Dist.	B.T. or W.T.
4/16 [#] E	Birch	5"	N 65° W	.18	wt.
4/16 [#] H	Aspen	5"	S 86° W	1.03	wt.

Sec. 2 T146NR26W

34/35
3/2by-
35/22
35/36
2/1

B.T.'s & W.T.'s (Cont.)

Cor. Spec. Dbh. Bear Dist. B.T. or W.T.

Notes

Chains

Line 50 F 1/4 cor

Ac

200hs 1/16 #5

Chains

LINE 50 F 1/4 #5

1

200hs 02

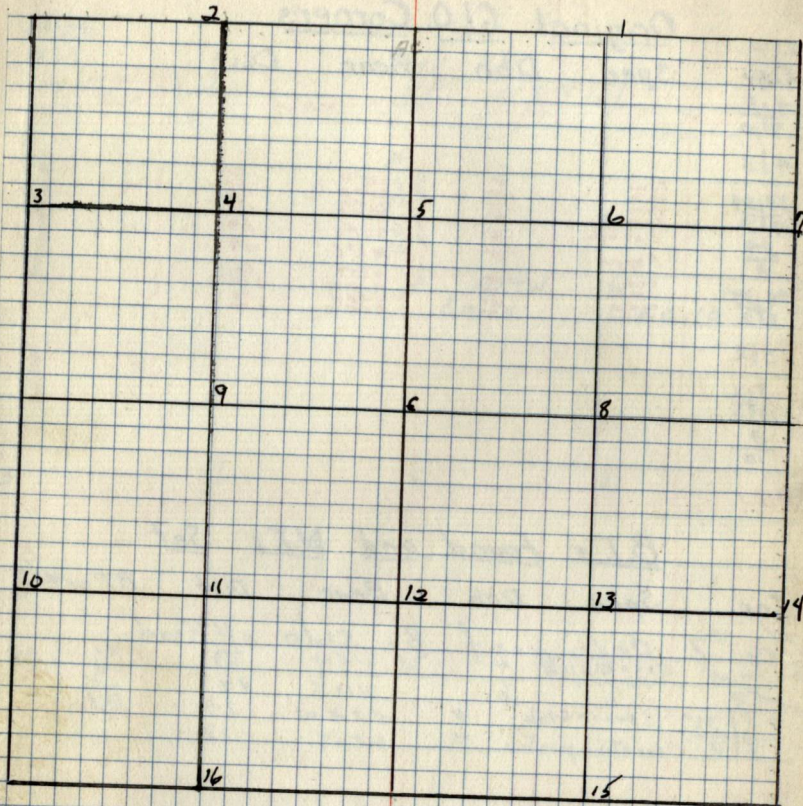
100hs 12

240hs 12

360hs 12, 12

40. 200hs 1/16 #7

Type + Cultural Map



Remarks: -

Original G.L.O. Corners

Cor	Spec.	Dbh.	Bear.	Dist.
-----	-------	------	-------	-------

4/3				
9/10				

4/3

33/34

4/3

34/3

3/3

34/35

3/2

3/2

3/2

10/11

3/10

M.C.1

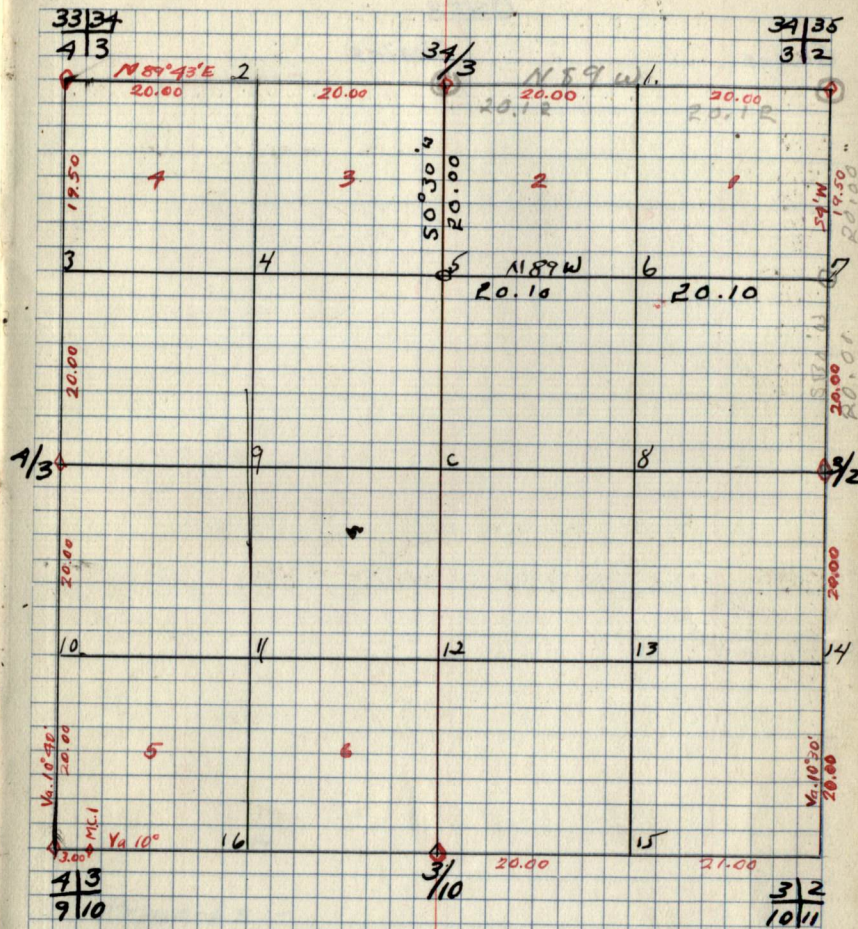
B.T.'s Found and W.T.'s Set

Cor.	Spec.	Dbh.	Bear.	Dist.	B.T. or W.T.
------	-------	------	-------	-------	--------------

1/16 #7	Cedar post		By side of Road		
---------	------------	--	-----------------	--	--

34/3	Spruce stub	4	S15°W	71	BT
3	Aspen	3	S60°W	10	W.T.
34/35	"	2	N19°E	27	BT
3/2	Spruce stub	4	S34°W	74	BT
3/2	Location post	4	West	12	

34/35	Spruce stub	4	S34°W	74	BT
3/2	Location post	4	West	12	

B.T.'s + W.T.'s (Cont.)

Cor.	Spec.	Dbh.	Bear.	Dist.	B.T. or W.T.
------	-------	------	-------	-------	--------------

5.

Notes

Chains

Lines Bet sec. 5-6

A8 30

60 chs to A

100 chs to b to

19 chs old trail E.W.

24 chs to A 30

70 chs to 7c

42 chs 15 F to 7c

Chains

Lines Bet sec. 5 to

to 7c

14 chs to 50 30

Rocks to

24 chs to A 30

34 chs to 7c

33 chs A1

79.80 chs sec. 50

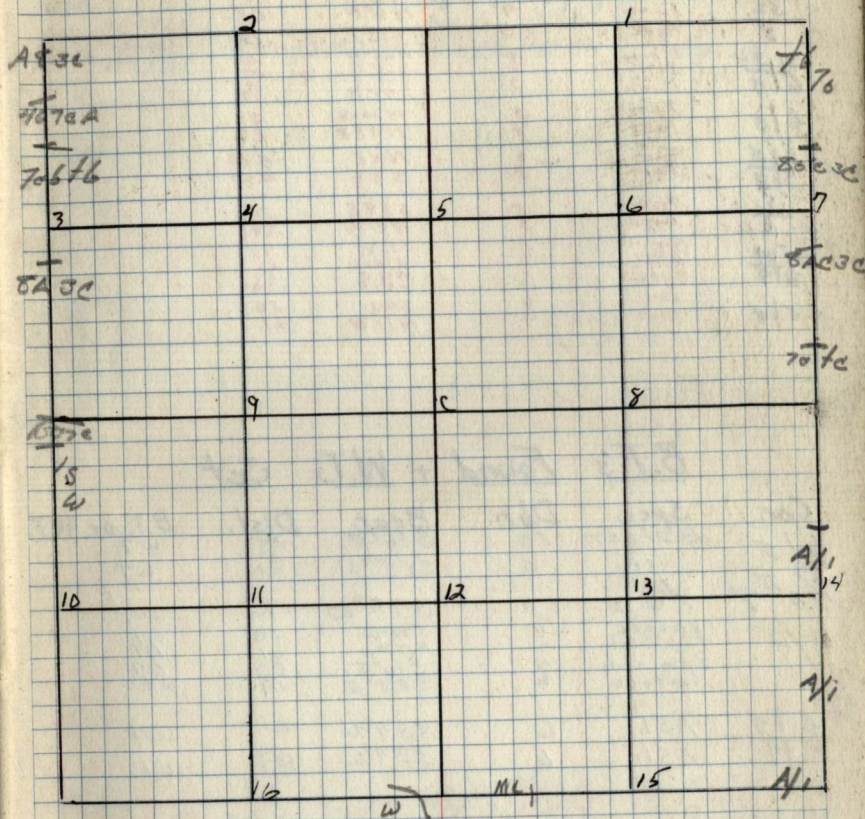
Line w. Bet sec. $\frac{5}{8}$

A11

320 chs MC

420 chs 15 W

Type + Cultural Map



Remarks:-

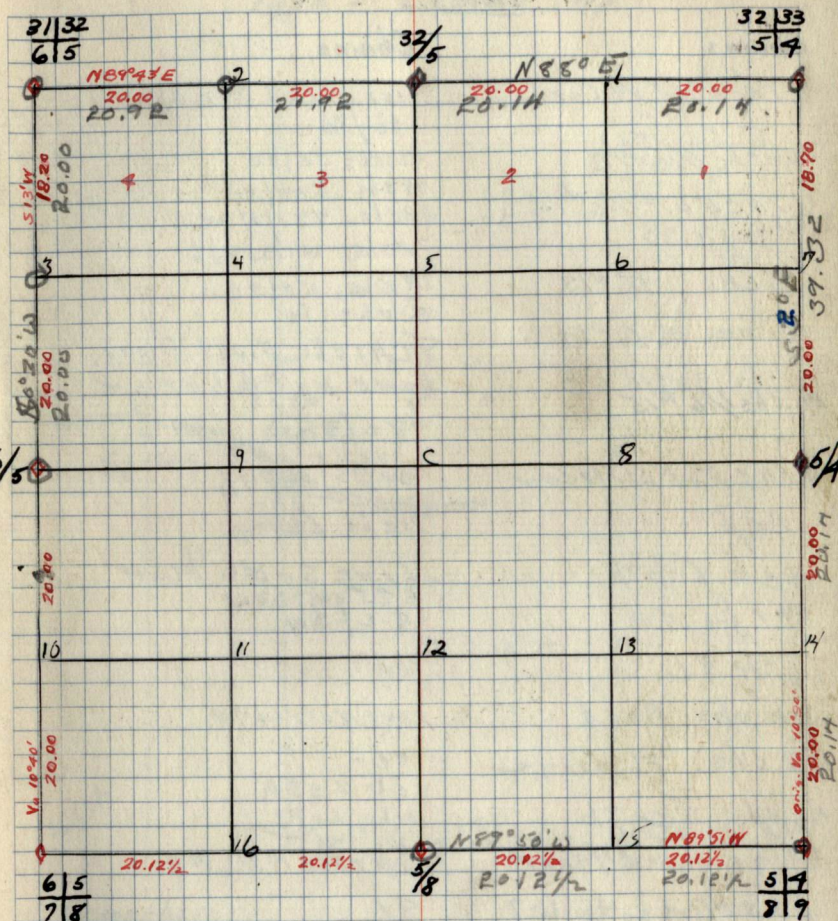
Original G.L.O. Corners

32/33	Tam	80° E	.26
5/4	Tam	54° E	.29
32	Tam	N 32° W	.29
5	Tam	4"	N 6° W
31/32	Birch	5"	S 18° E
6/5	Tam	5"	.75
6/5	Tam	5"	N 65° W
6/5	Tam	5"	N 39° E
6/5	Tam	5"	N 31° E
6/5	Tam	5"	N 29° W
7/8	Aspen	5"	N 20° W
5	Aspen	5"	N 45° E
8	Aspen	5"	.25
5/4	Tam	6"	N 4° E
8/9	Tam	8"	S 3° E
5/4	Aspen	5"	5.00
8/9	Aspen	5"	4.90
5/4	Aspen	5"	S 79° E
8/9	Aspen	5"	N 41° W
5/4	Aspen	5"	.25
8/9	Aspen	5"	.38
5/4	Aspen	5"	S 72° W
8/9	Aspen	5"	N 78° W
5/4	Aspen	5"	.55
8/9	Aspen	5"	.23
5/4	Aspen	5"	N 32° E
8/9	Aspen	5"	.54
5/4	Tam	4"	S 10° E
8/9	Tam	4"	N 77° W
5/4	Tam	4"	.28
8/9	Tam	4"	.61

B.T.'s Found + W.T.'s Set

Cor.	Spec.	Dbh.	Bear.	Dist.	B.T. or W.T.
6/5	Balsom	10	S 16° E	28	wt
6/5	"	5	S 55° W	20	wt
6/5	Tam	6"	S 78° W	.13	wt
5/4	spruce	4	S 78° W	13	wt
5/4	Tam stub	4	N 77° W	61	wt
5/4	Tam stub	4	S 10° E	28	wt
5/4	spruce	6	S 83° E	19	wt
5/4	Ash	6	N 34° W	24	wt
8/9	Ash	6	S 24° W	29	wt

Sec. 5 T146N R26W



B.T.'s + W.T.'s (cont.)
 Cor. Spec. Dbh. Bear. Dist. B.T. or W.T.

Notes

Chains

LINE OF 1/4 COR

8 chs. 5c
20 chs. 1/16 #12

LINE OF 1/16 #12

8 chs. 3b
17 chs. 1s
20 chs. 1/16 #13

Line of 1/16 #13

1s
10 chs. enter. 1b
20 chs. 1/16 #15

LINE OF W. 1/4 COR.

Ac/

8 chs. 8c 9b

13 chs. 5a

20 chs. 8c

30 chs. Road

37 chs. Flowage

46 chs. 8c 3b

51.95 chs. 6 1/4 COR

LINE OF Bet Lots 6-7

8 chs. 9b
4 chs. 8c
7.5 chs. Road
16 chs. Lot 150

Chains

Line E Bet. Sec. 6 & 7
16/7b

46 chs. 3c/8c

49 chs. 8c/3d

53 chs. 93c/1/1Ac

72 chs. w. marsh

78 chs. 5c/8c

81 chs. 1s

86.47 chs. First River.

LINE OF 6 1/4 COR.

8c/3b

4 chs. Ab/3b

11 chs. Lake

LINE SOFC 1/4 COR

4.75 chs. Road

8c/3b

20 chs. 1/16 #12

LINE OF 1/16 #9

8c

6 chs. 8c 3b

11 chs. Lake

LINE OF 1/16 #9

8c

1.25 chs. Road

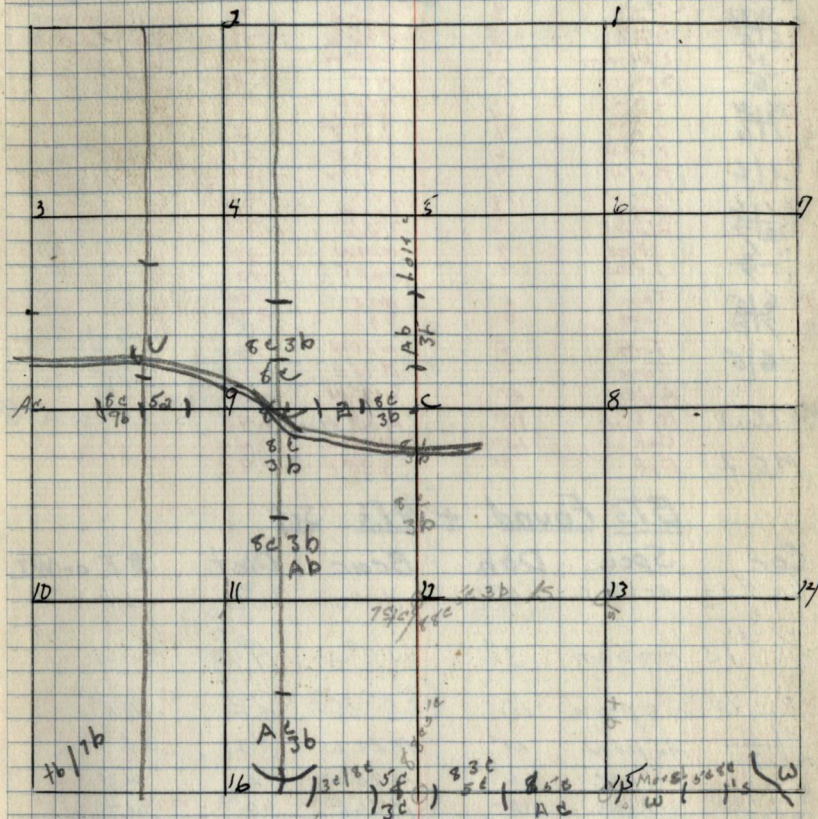
12 chs. 8c 3b Ab

30 chs. Ac/3b

38 chs. 1b 7b

70 chs. 1/16 #16

Type + Cultural Map

Remarks:

7.

Notes

Chains

LINE Bet sea 67

T676

40chs 308A

49chs 50830

53chs 813 d/Ac

72chs wet Marsh

78chs 3080

81chs 1s

66H 700chs River

LINE Est of #13

Ac 30 8c

6chs 1s

8chs 1su

Line S of 1/4 Cor

508

106chs 9630

14chs 36Ac

18chs Ac

Line of 70#5

Ab

6chs - 30 Bb 1s

18chs 1s

Line N of 1/4 #6

1s

40chs 30 Bb

Chains

LINE Bet sea 7/18

T676

225chs Riveway

5chs Mb 1

8.56chs Firway 1/46

1840chs Highway 1/46

26chs 7040

43ch marsh grass

72chs 7c7c

83chs 8c9c

102.67chs 500.000

LINE N of #6 #15

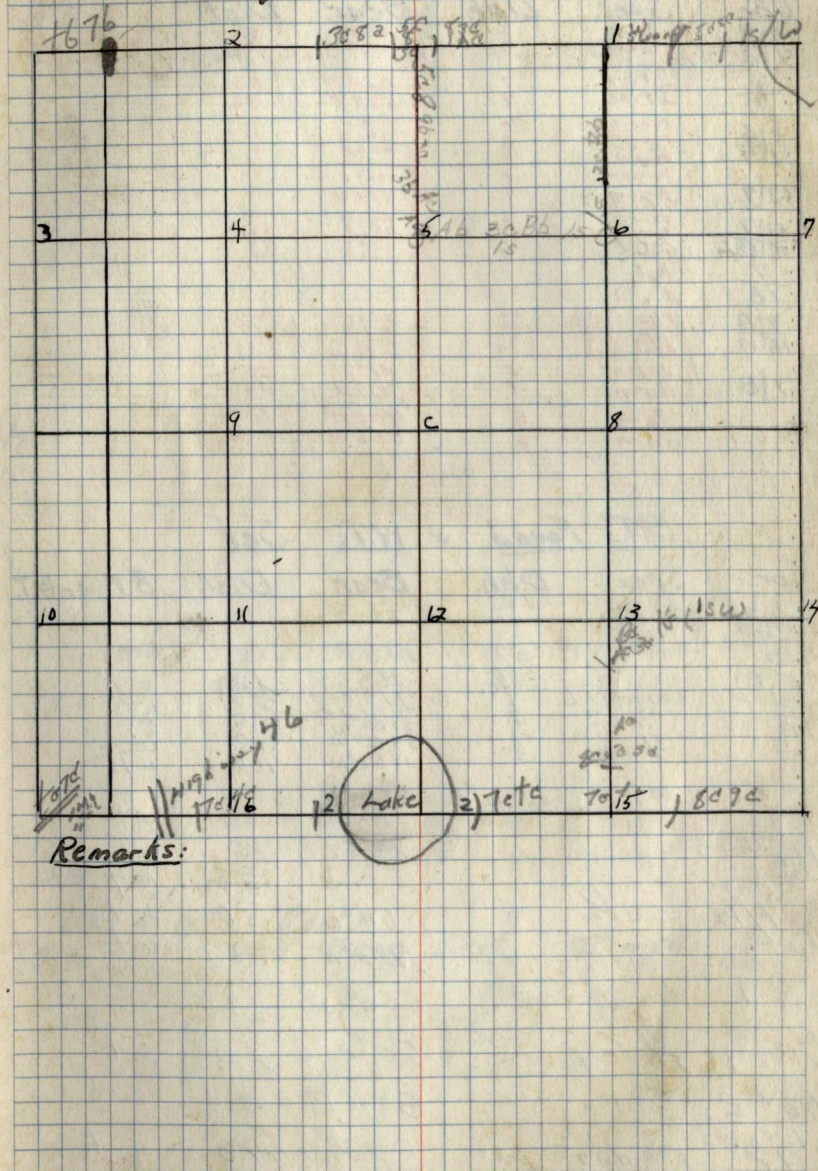
T676

50chs 50830

12chs Ac 30 8c

200chs 1/4 #13

Type + Cultural Map



Notes

Chains

Line N of Sec. 89

9 Ac
10 chs 15
16 chs 15 W

Line N of 1/4 #15

800 3000
8 chs Fireway EW
11 chs 20.30
13 chs 19
18 chs 15 W

Line S of 1/4 #11

8 Ac 1
12 chs 80.50
20 chs 1/16 #16

Line N of 1/4 #11

8 Ac 1
3.72 chs Fireway
15

12 chs 80.50
14.03 Fireway
24 chs 80.50 Ac
28.50 chs Fireway
38 chs M.C.

Chains

Line N of 1/4 Cor

7000
40 chs 80.50
14 chs Fireway
20 chs 1/16 #12

Line W of 1/16 #12

50.50
70 chs 80.50
8.50 chs Fireway
20 chs 1/16 #11
24 chs 1/4 Fireway
26 chs 15 W

Line S of Sec. 89

8 Ac 1
18 chs 15
21 chs River

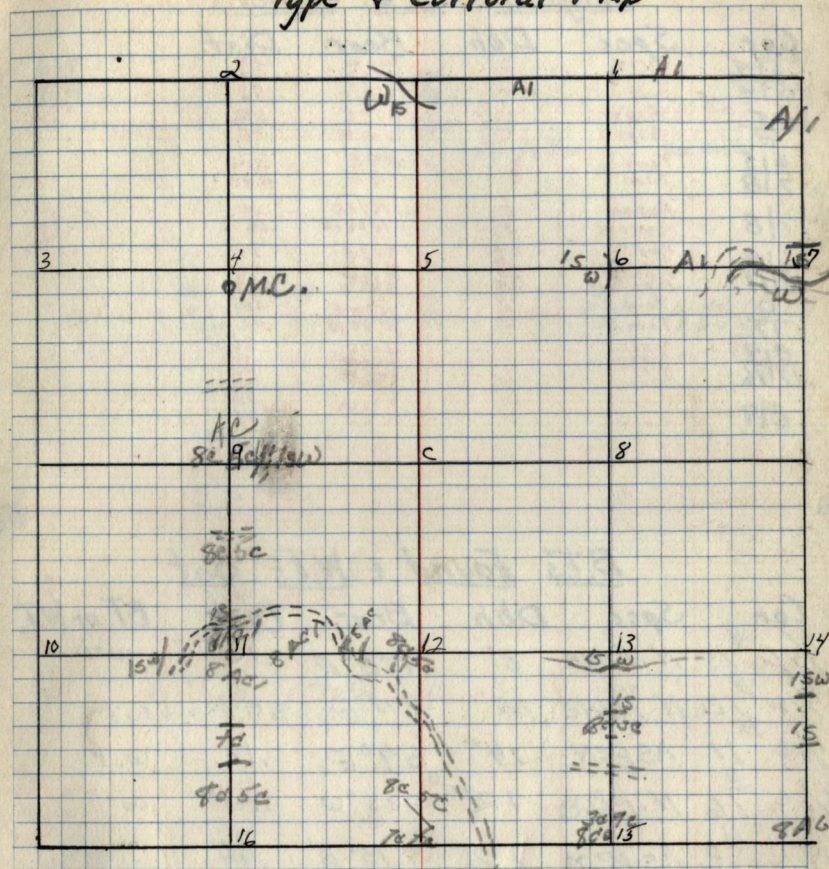
Line W of 1/4 #7

2 chs River
5 chs Leave River
8 Ac 1
19 chs 15 W

Line E of 1/4 #9

80.50
2.10 chs F.W.
5 chs 15 W

Type + Cultural Map



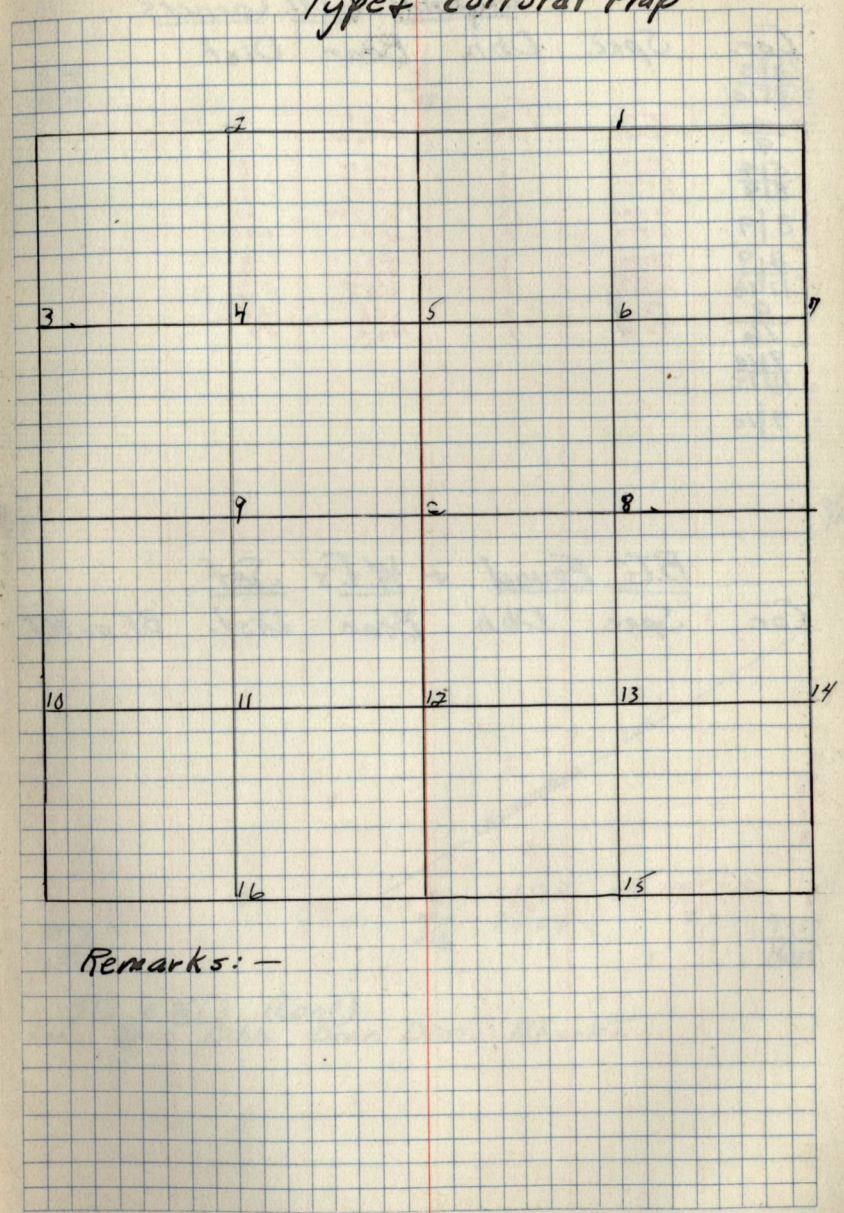
Remarks:-

Notes

Chains

Chains

Types Cultural Map



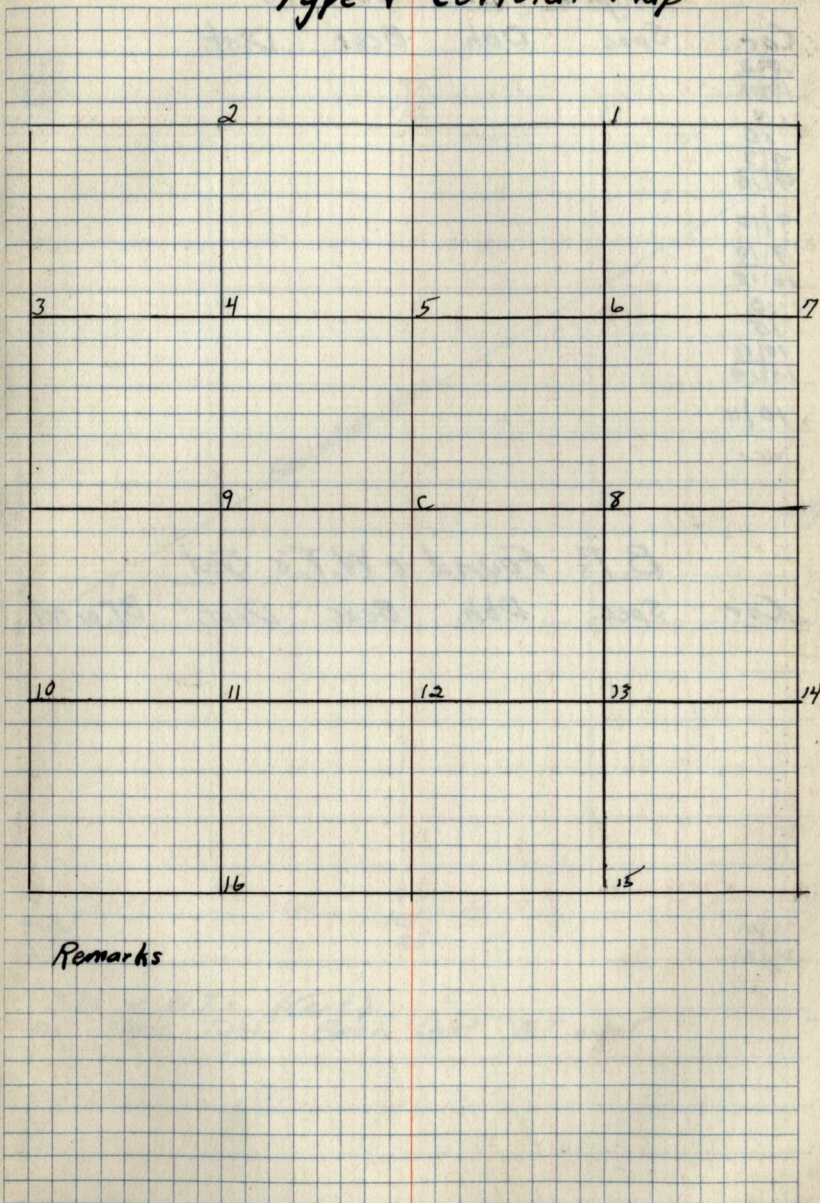
Remarks: -

Notes

Chains

Chains

Type + Cultural Map



Original G.L.O. Corners

Cor. Spec. Dbh. Bear. Dist.

3/2
10/113
7/07/3
9/10

9/10

9/10
16/1510
1510/11
15/14

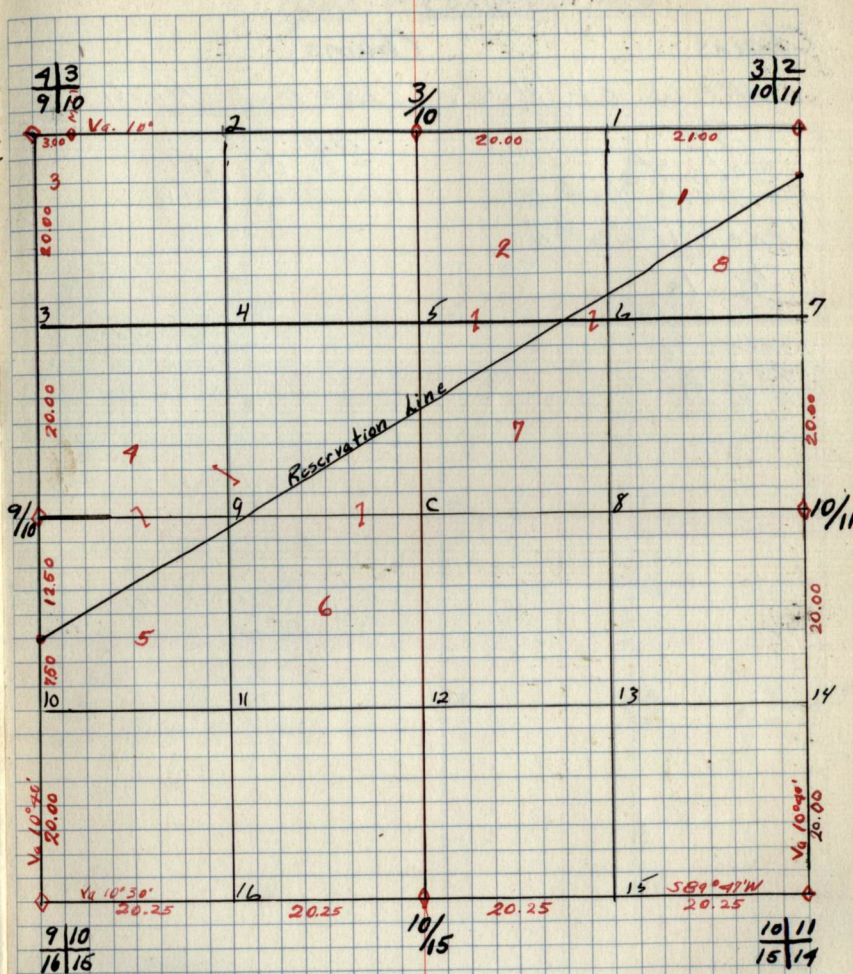
10/11

M.C.I

B.T.'s Found + W.T.'s Set

Cor. Spec. Dbh. Bear. Dist. B.T. or W.T.

by-



B.T.'s + W.T.'s (cont.)

Cor. Spec. Dbh. Bear. Dist. B.T. or W.T.

9/10
16/15

10/15

10/11
15/14

Notes

Chains

LINE W. OF 'HCOY LINE. FO F 1/16 #13

Aa

15 chs. Tc

20.31 chs. 1/16 #8

LINES. 1/16 #8

Tc 1s

6 chs. Fa/Bb

13 chs. Tc

17 chs. Aa Bb

19.96 chs. 1/16 #13

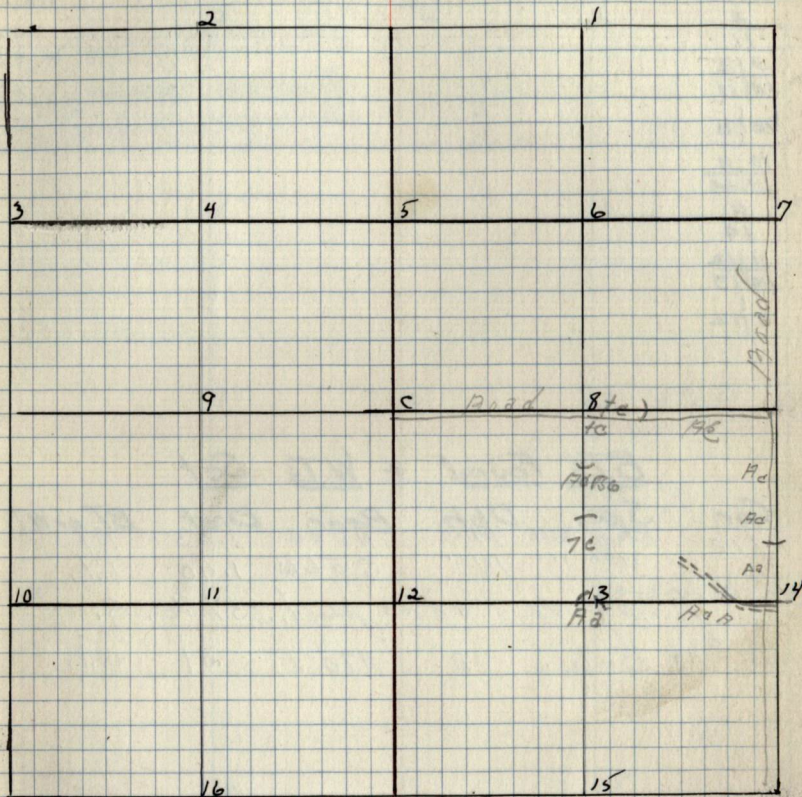
Chains

LINE. FO F 1/16 #13

Aa

15.50 chs. F.W

20.22 chs. 1/16 #14

Type & Cultural Map

Remarks:-

Original G.L.O. Corners
Spec. Dbh. Bear. Dist.

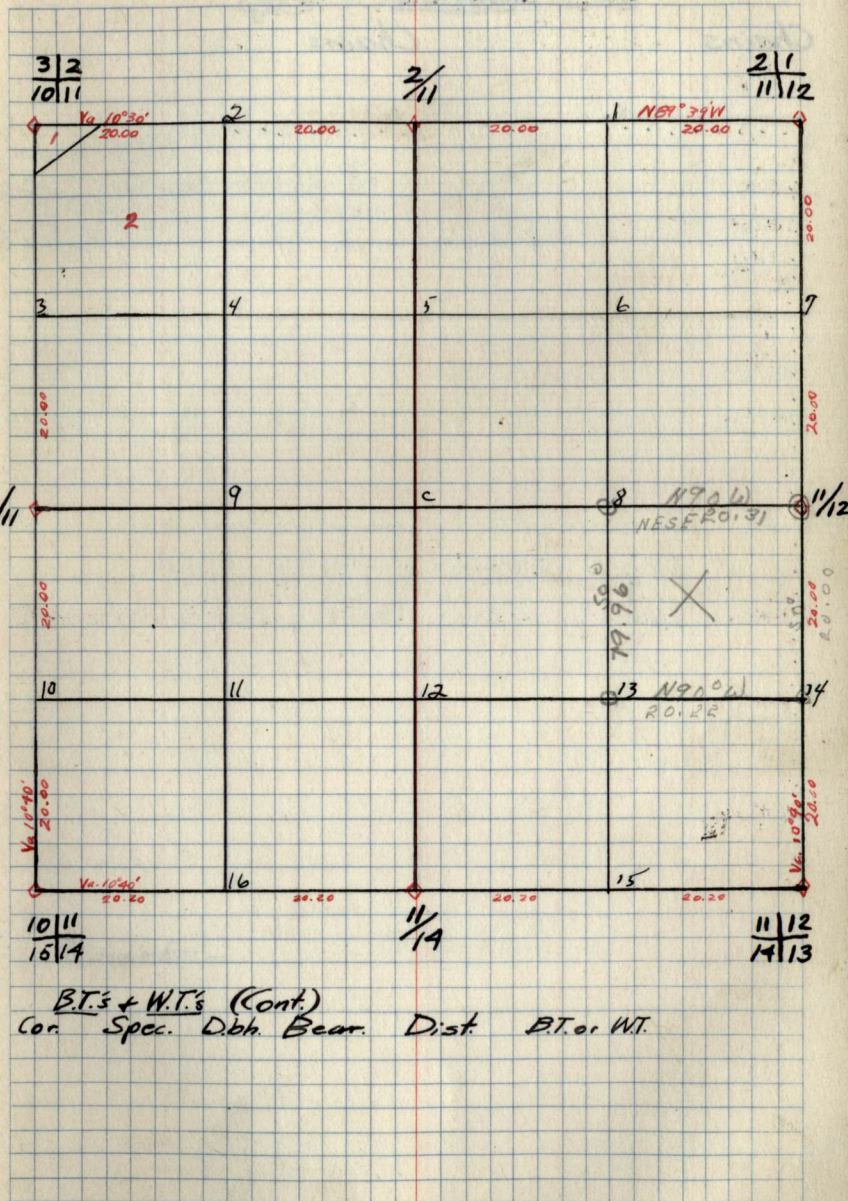
Cor.
2/1
11/12
2
11
3/2
10/11
10/11
15/14
11
14
11/12
14/13
11/12

B.T.'s Found + W.T.'s Set

Cor.	Spec.	Dbh.	Bear.	Dist.	B.T. or W.T.
11/12	B. F. Gill	14"	N 3° E	1.05	B.T.
	" " "	14"	S 56° W	1.40	B.T.
1/16 # 8	Taylor	Fedora post.	35° N 65° S		
1/16 # 13	Balsow	12"	N 70° E	.31	W.T.

Sec. 11 T146N R26W

by Haberle

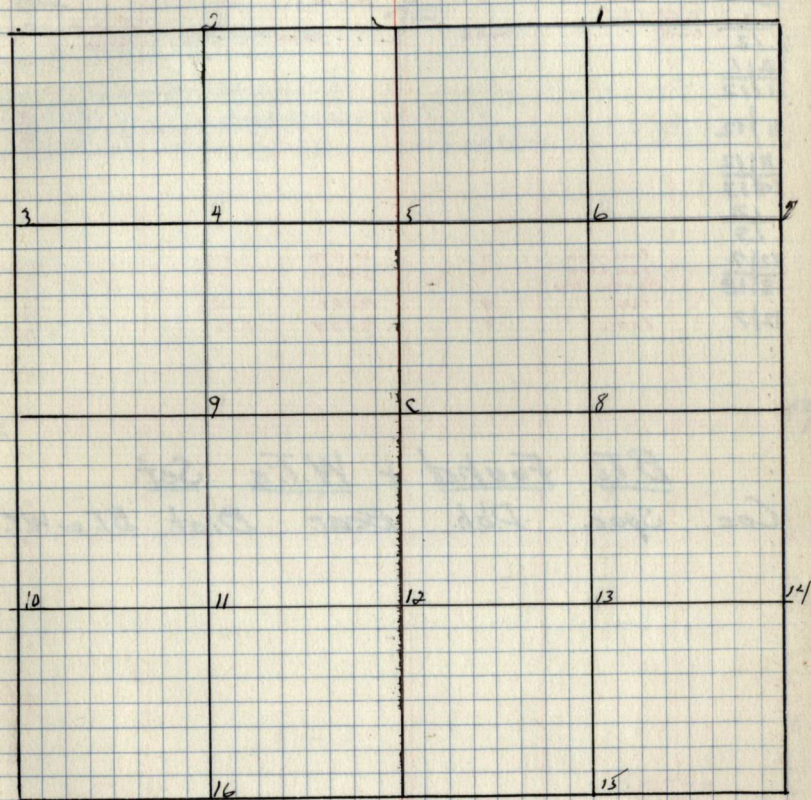


B.T.'s + W.T.'s (Cont.)
Cor. Spec. Dbh. Bear. Dist. B.T. or W.T.

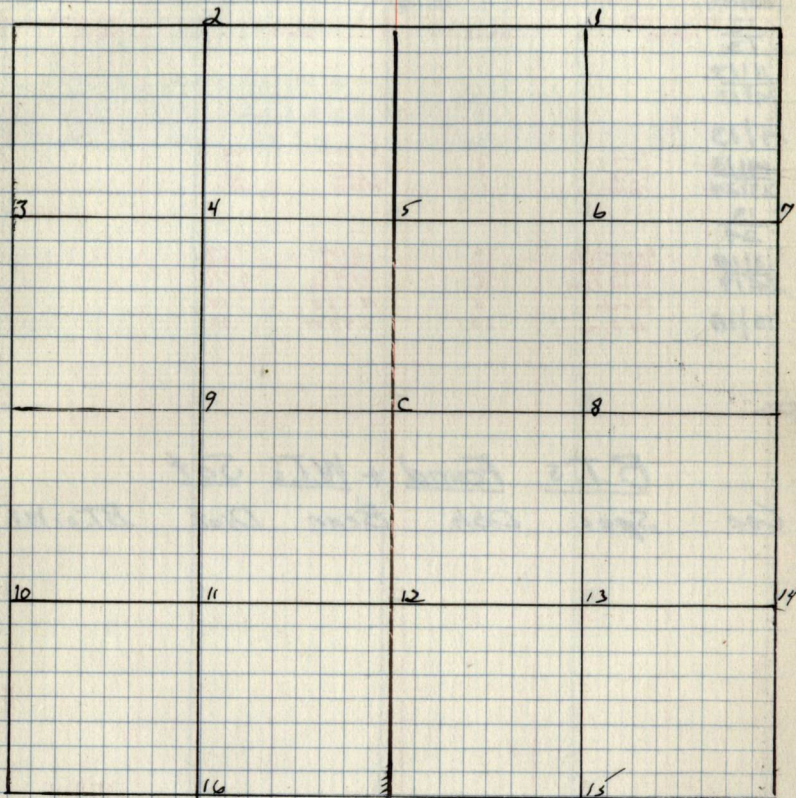
Notes

Chains

Chains

Type + Cultural Map

Remarks: -

ChainsNotesChainsType + Cultural Map

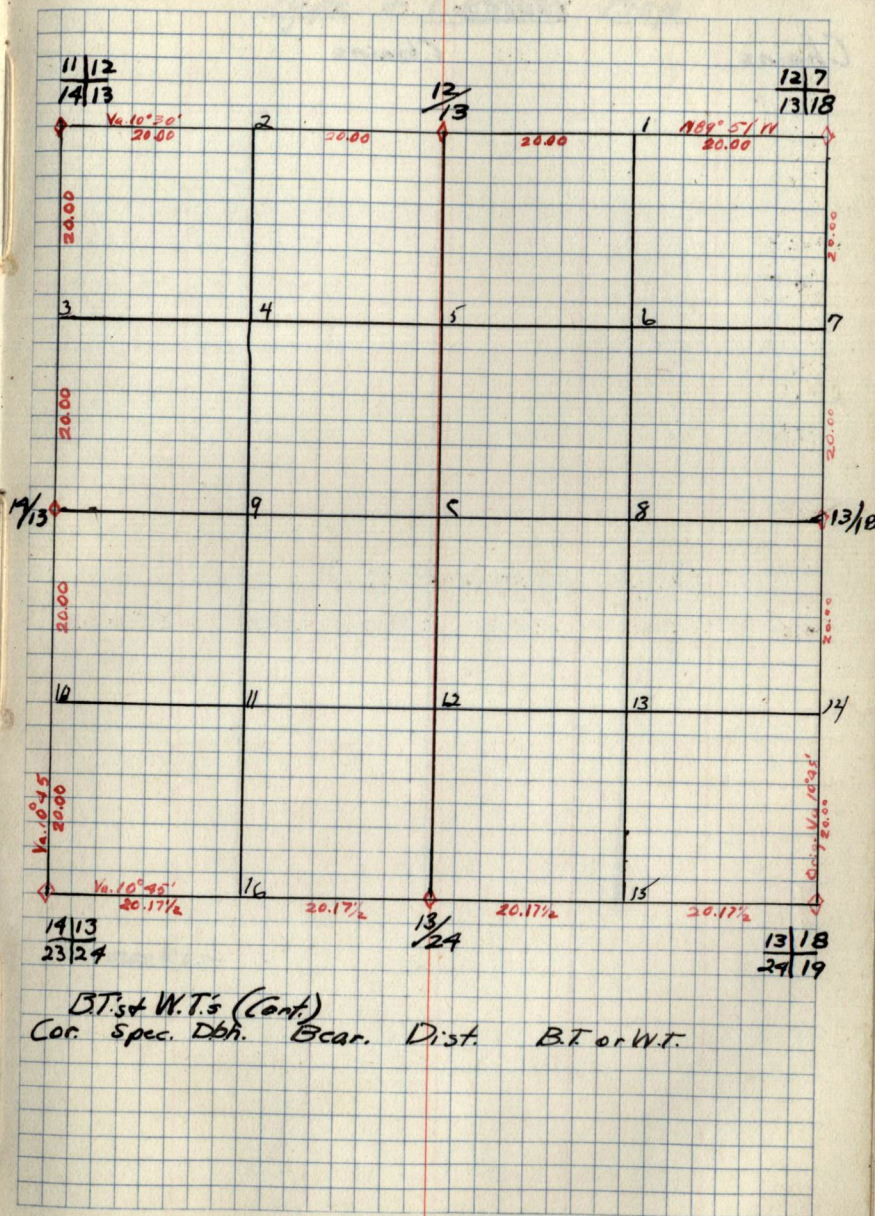
Remarks: -

Original G.L.O. Corners

Cor.	Spec.	Dbh.	Bear.	Dist.
12/7	Tam. 5' x 6'	5	S 98 W	.22
13/18	Tam. 5' x 6'	6	S 50 E	.55
12/7	No other trees			
11/13				
14/13				
14/13	Tam	Group	N 58 E	.06
23/24	Tam		N 33 E	.15
13/21	Tam		S 69 W	.28
13/21			N 13 W	.10
13/18	Bass Wood	10	S 81 W	1.14
24/19	Dead Pine	120	S 40 E	.85
13/18	Dead Pine	16	N 15 E	1.16
13/18	Birch	5	N 27 E	.19
13/18	W. Pine	20	S 38 W	.60

B.T.'s Found + W.T.'s Set

Cor.	Spec.	Dbh.	Bear.	Dist.	B.T. or W.T.
------	-------	------	-------	-------	--------------

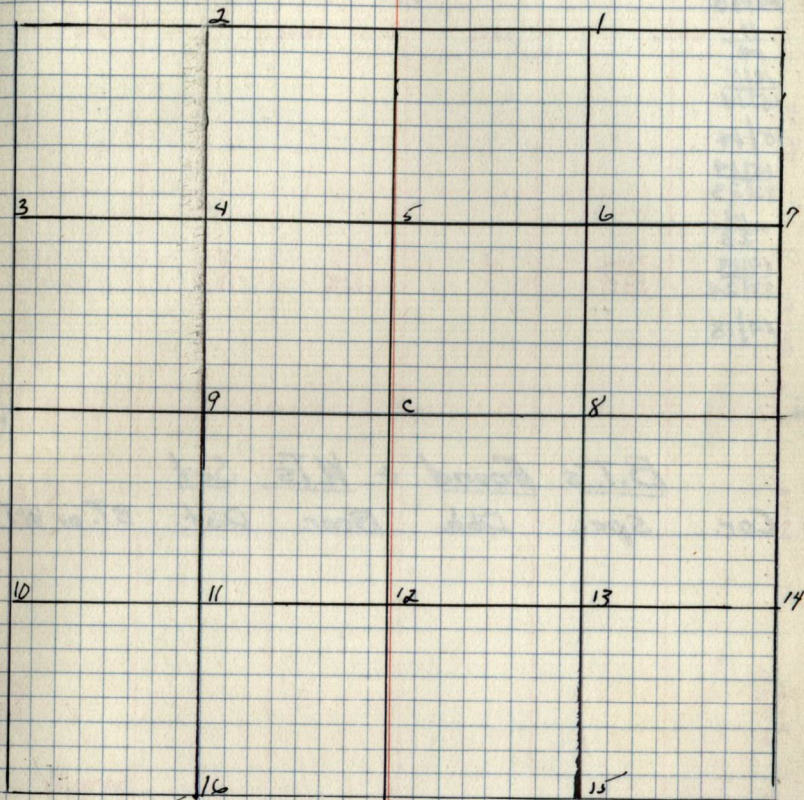


B.T.'s + W.T.'s (Cont.)
Cor. Spec. Dbh. Bear. Dist. B.T. or W.T.

Notes

Chains

Chains

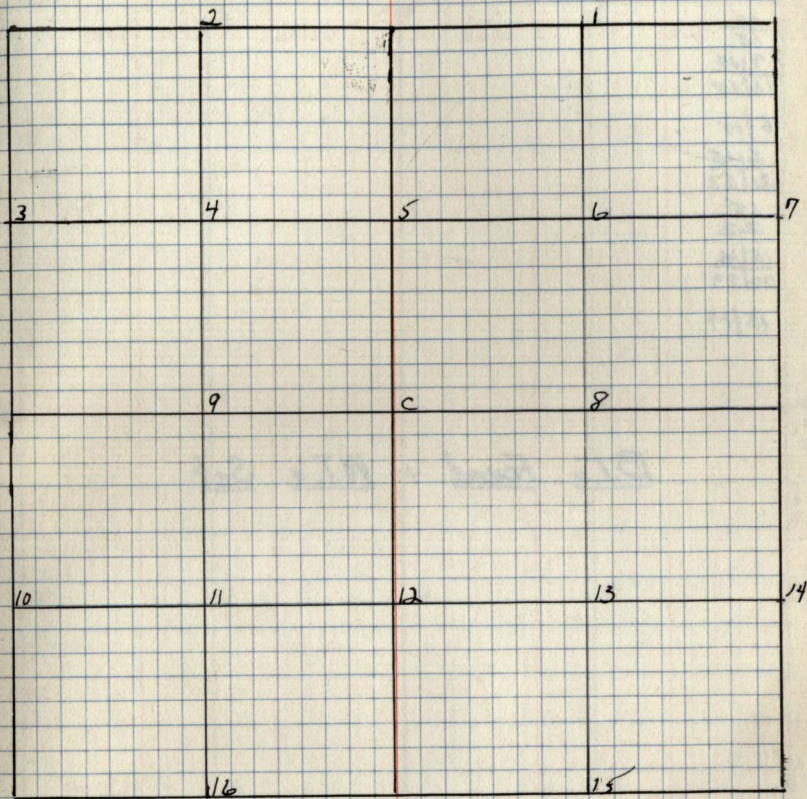
Type + Cultural Map

Remarks:-

Notes

Chains

Chains

Type + Cultural Map

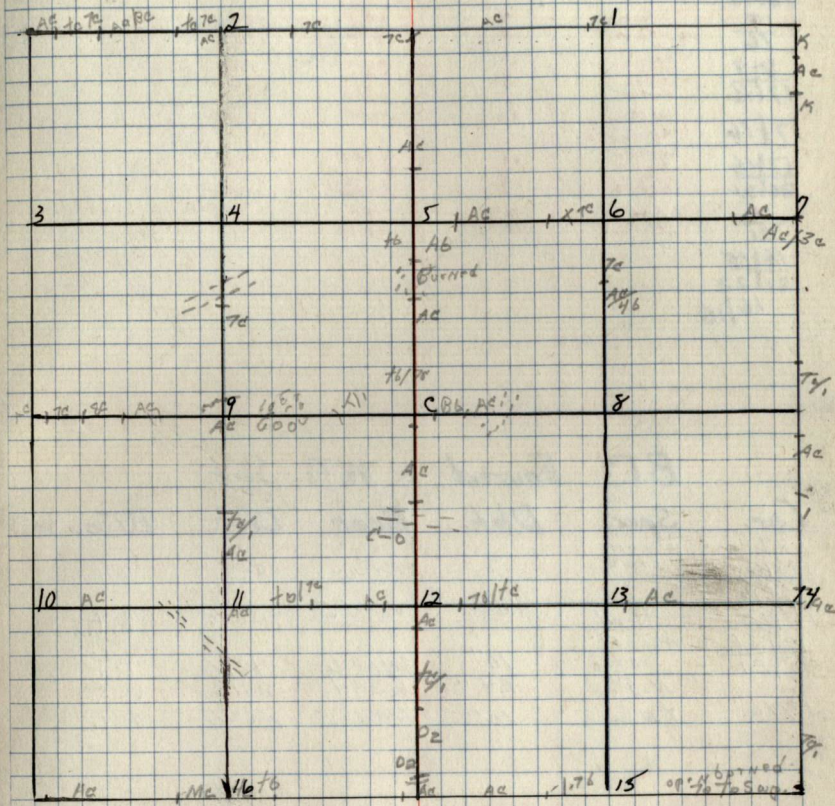
Remarks:-

Chains

Notes

Chains

Type + Cultural Map



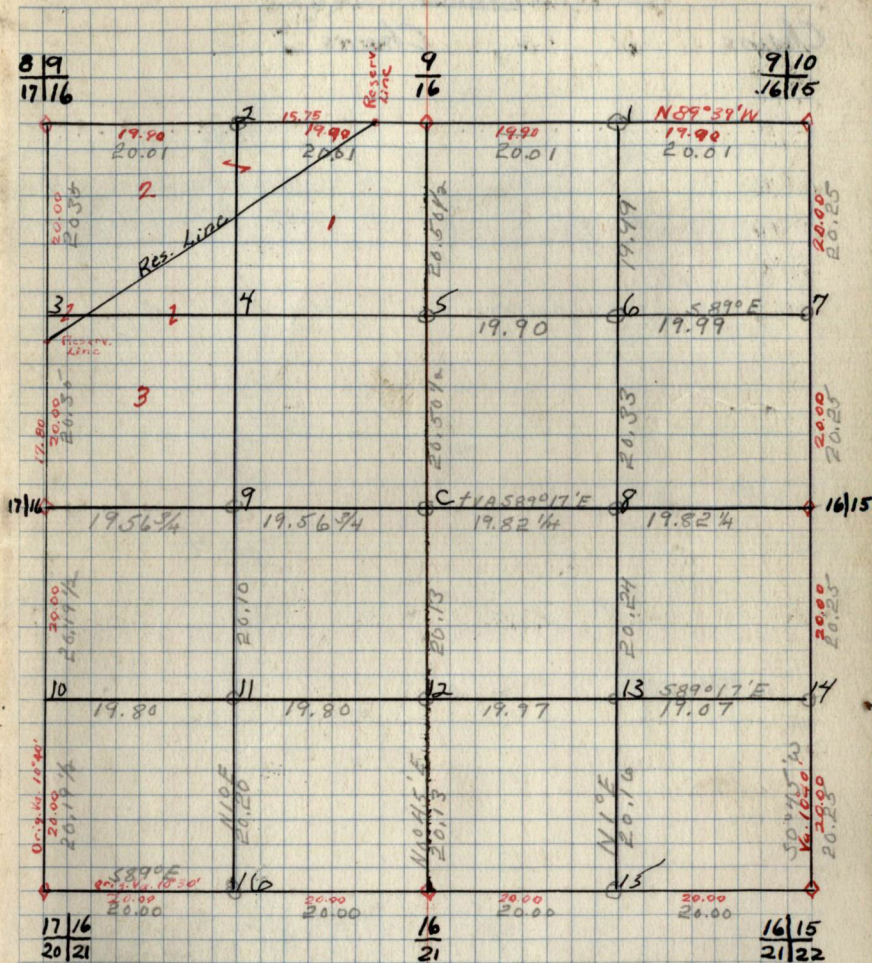
Remarks:

Original G.L.O. Corners

Cor.	Spec.	P.b.h.	Bear.	Dist.
9/10 16/15				
9 76	Tam	4	S8E	.29
8/9	Tam	4	N9E	.90
17/16	Aspen	4	N15E	.13
17/16	Aspen	4	N41W	.38
17/16	Aspen	4	S87W	.45
17/16	Aspen	4	S56E	.60
17/16	N. Pine	12	W40°	2.10
17/16	No other tree			
17/16	N. Pine	12	N75E	1.05
20/21	Aspen	4	S25E	1.26
20/21	Aspen	4	N11W	1.15
20/21	Aspen	4	N72W	1.20
16 21	Tam.	3	S5E	.29
16/15	B. of G.L.	3	N10W	.34

B.T.'s Found + W.T.'s Set.

Cor.	Spec.	Db.h.	Bear.	Dist.	B.T. or W.T.
8/9 17/16	Aspen Stub	5 1/2"	S54°W	82	B.T.
9/10 16/15	Aspen Dead	10"	N29°E	5'6 1/2	B.T.
17/16 20/21	Aspen Stub	10"	S46°W	1.16	B.T.
17/16	N.P.	24"	W85°E	2.10	B.T.
17/16	Tam.	10"	N54°E	46 3/4	B.T.



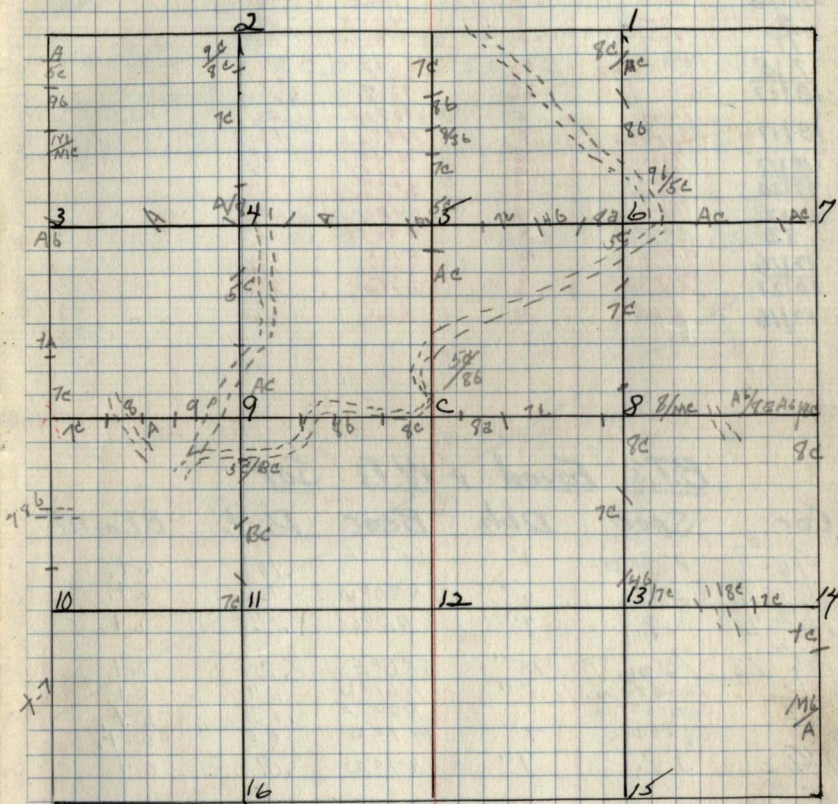
B.T. + W.T.'s (Cont.)
Cor. Spec. Db.h. Bear. Dist. B.T. or W.T.

Notes

Chains

Chains

Type + Cultural Map



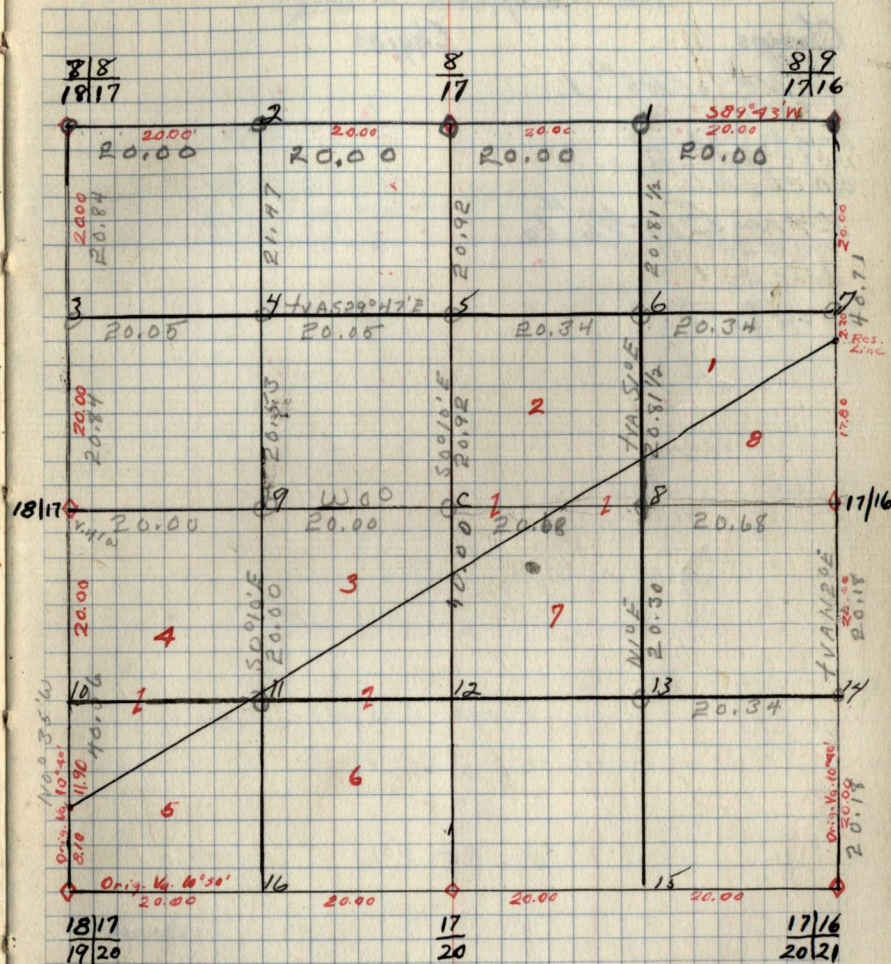
Remarks :-

Original G.L.O. Corners

Cor.	Spec.	Dbh.	Bear.	Dist.
8/9	Aspen	8"	N15E	.13
17/16	Aspen	8"	N41W	.30
	Aspen	8"	S85W	.30
	Aspen	8"	S56E	.20
8/17	Tam	5"	N35E	.11
	Tam	5"	S86W	.45
7/8	Pine Stub	2 1/2"	S53E	.33
18/17	Pine Stub	2 1/2"	N75W	.39
	Pine Stub	2 1/2"	N22W	1.27
18/17	Tam	5"	N59W	.29
	Spruce	5"	N43E	.13
18/17	Tam	6"	N54E	.21
19/20	Tam	3 1/2"	S76W	1.22
	Tam	3 1/2"	N5W	1.93
17/20	Tam	4"	S18E	.32
	Tam	6"	N46W	.17
17/16	N.Pine	12"	N78E	.05
20/21	Aspen	2"	S25E	1.36
	Aspen	3"	S15E	1.15
	Aspen	3"	N77W	1.20
17/16	N.Pine	12"	N90°	2.10

B.T.'s Found + W.T.'s Set

Cor.	Spec.	Dbh.	Bear.	Dist.	B.T. or W.T.
1/6 #9	ASP + N	8"	S58°E	.16	wt.
1/6 #14	fam.	6"	N80°W	.73	wt.
1/6 #6	J.P.	7"	N20°W	.16	wt.
1/6 #13	fam.	15"	S86°E	.27	wt.
17	Dead fam.	5"	N61°W	.29	B.T.
18	Spruce Stub	5"	N75°E	.13	B.T.
	Spruce	7"	N41°W	.07	w.t.
C#4	J.P.	9"	N70°W	.09	wt.
1/6 #11	fam.	4"	S12°W	.13	wt.
1/6 #4	Aspen	10"	N37°W	.30	wt.
1/6 #5	J.P.	.09	N44°E	.26	wt.
	W.P.	.10	N20°E	.42	wt.
1/6 #8	Asp.	.18	N4°E	.15	w.t.



B.T.'s + W.T.'s (Cont.)
 cor. Spec. Dbh. Bear. Dist. B.T. or W.T.

Notes

Chains

Chains

LINE 5 of 6 #1
70 to

20 chs Ac 50 90

110 chs 70 80

20 chs 1/2 #6

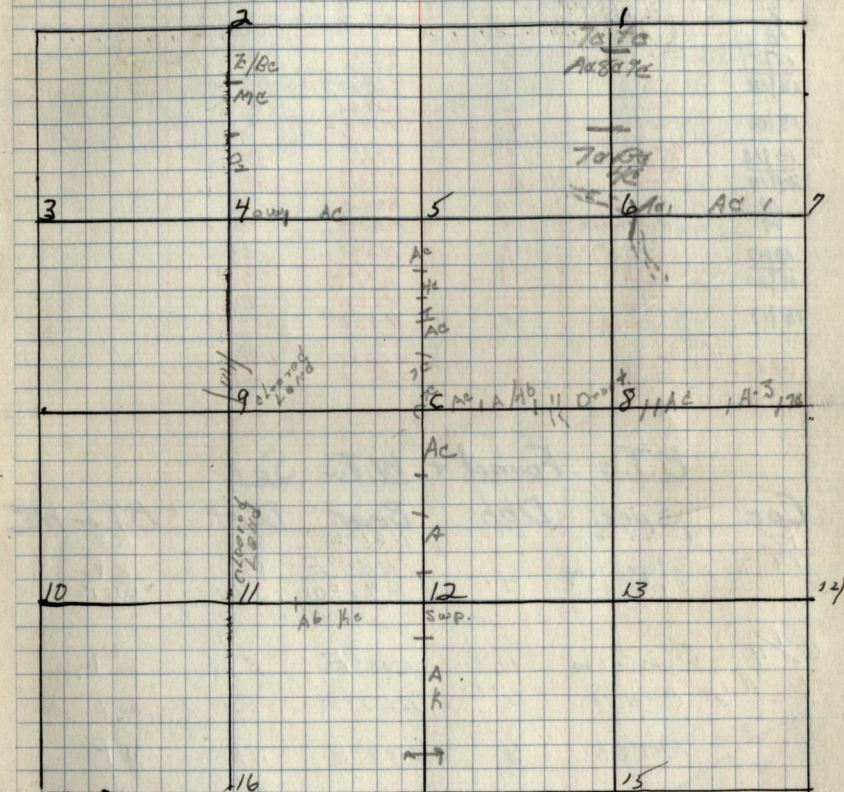
LINE 6 of 6 #6

70 to 80

20 chs Ac 1

20 chs 1/2 #7

TYPE & CULTURAL MAP



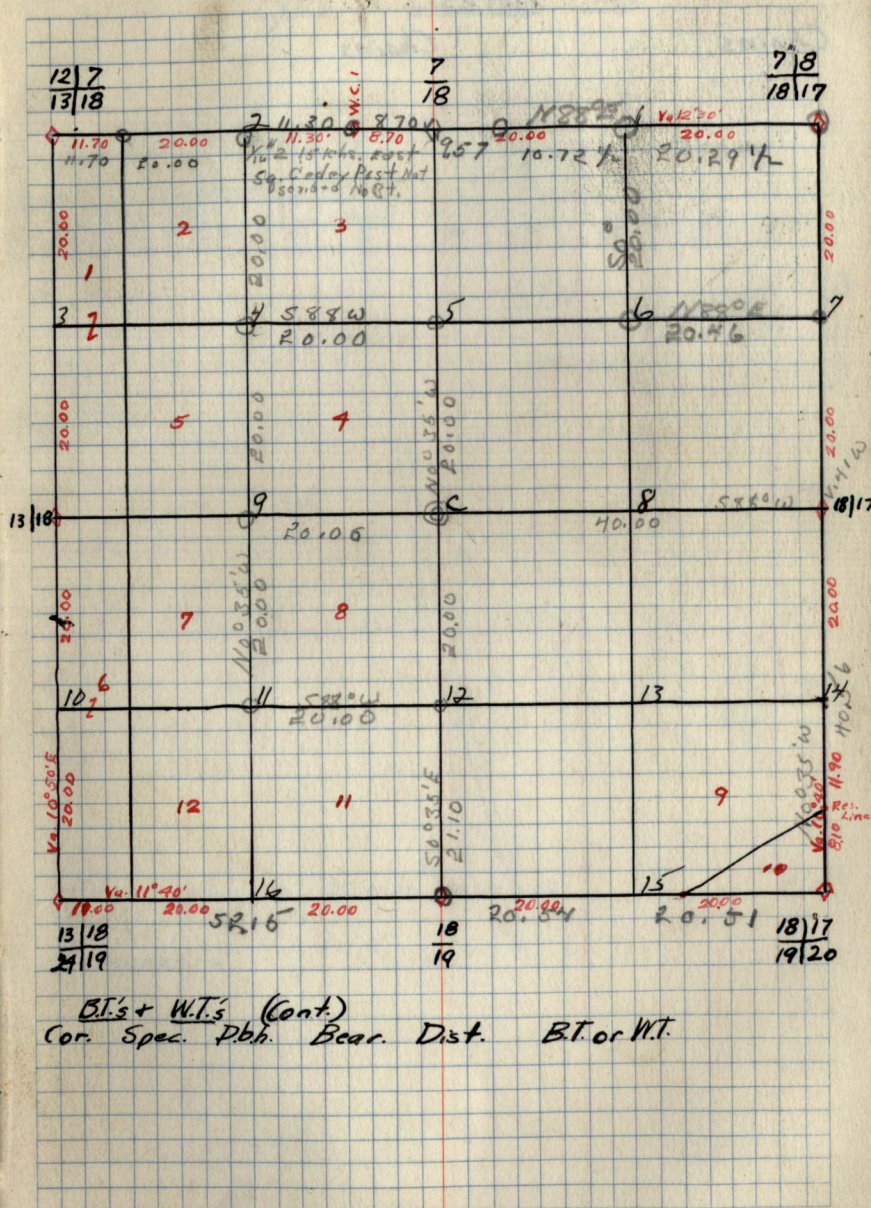
Remarks: -

Original G.L.O. Corners

Cor.	Spec.	Dbh.	Bear.	Dist.
7/18	Pine stub		N 7° E	.39
18/17	Pine stub		N 32° W	1.73
7/18	X			
12/17	Tam		N 49° W	.22
13/18	Tam		N 52° E	.07
13/18	Tam		S 13° E	.16
13/18	Poplar	4	S 21° W	.12
13/18	Poplar	4	N 71° E	.11
13/18	Oak		S 63° E	.30
13/18	Birch		N 51° E	.90
24/19	Poplar		S 90° W	.10
18/19	Aspen	6	N 58° W	1.00
18/19	Basswood	6	S 49° E	.35
18/17	Tam		N 84° E	.41
18/17	Tam		S 77° E	.27
18/17	Tam		N 20° W	1.23
18/17	Tam		N 5° W	.93
18/17	Tam		N 59° W	.29
18/17	Spruce		N 43° E	.13
W.C.1	Tam	8	N 88° W	1.50
W.C.1	Tam	6	S 86° W	1.40

B.T.'s Found + W.T.'s Set.

Cor.	Spec.	Dbh.	Bear.	Dist.	B.T. or W.T.
17/18	Decid. Tam	5"	N 61° W	.29	B.T.
17/18	Pitcher stump		N 45° E	.13	B.T.
17/18	Spruce	7"	N 41° W	.07	W.T.
1/4	Basswood	16"	N 15° E	.30	w.t.
1/6	Aspen	6"	N 67° E	.21	w.t.
1/6	Birch	6	S 32° E	.12	w.t.



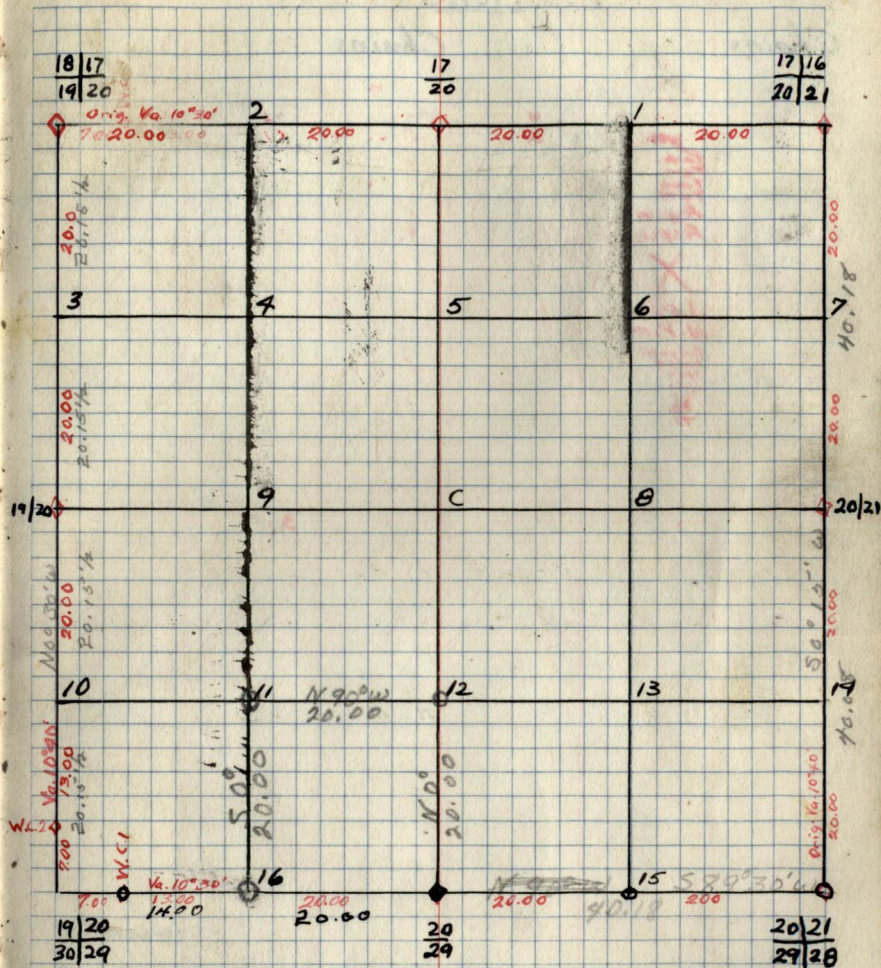
B.T.'s + W.T.'s (Cont.)
Cor. Spec. Dbh. Bear. Dist. B.T. or W.T.

Original G.L.O. Corners

Cor.	Spec.	Dbh.	Bear.	Dist.
17/16	N. Pine	15	N70E	1.05
20/21	Aspen	15	S25E	1.36
17	Aspen	15	S1W	1.50
20	Aspen	15	N21W	1.50
17	Tam.	4	S18E	.32
20	Tam. C	6	N46W	.17
18/17	Tam.	6	N89E	.61
19/20	Tam.	6	S77E	.77
19/20	Tam.	6	S29W	1.53
19/20	Tam.	6	N5W	.73
19/20	Aspen	9	N82E	.25
30/29	Aspen	9	N81W	.70
20	J. Pine	12	N65E	.15
29	N. Pine	18	S50W	.41
20/21	Balsam	11	N54W	.55
29/28	Spruce	11	S73W	.19
20/21	Spruce	11	N6E	.19
20/21	Spruce	11	S79E	.19
20/21	Tam	6	S78E	.32
20/21	Tam	6	N72W	.18
W.C.1	Aspen	10	S43E	1.96
W.C.2	Aspen	6	N4W	3.00

B.T.'s Found + W.T.'s Set

Cor.	Spec.	Dbh.	Bear.	Dist.	BT. or WT.
20	N. Pine	24"	S58W	.41	BT + WT
29	J. Pine	5"	N3E	.15	WT
#12	J. Pine	7"	N35E	.40	WT
#16	set in fence. No WT available				
W.C.#1	Aspen	4"	S47E	.12	WT

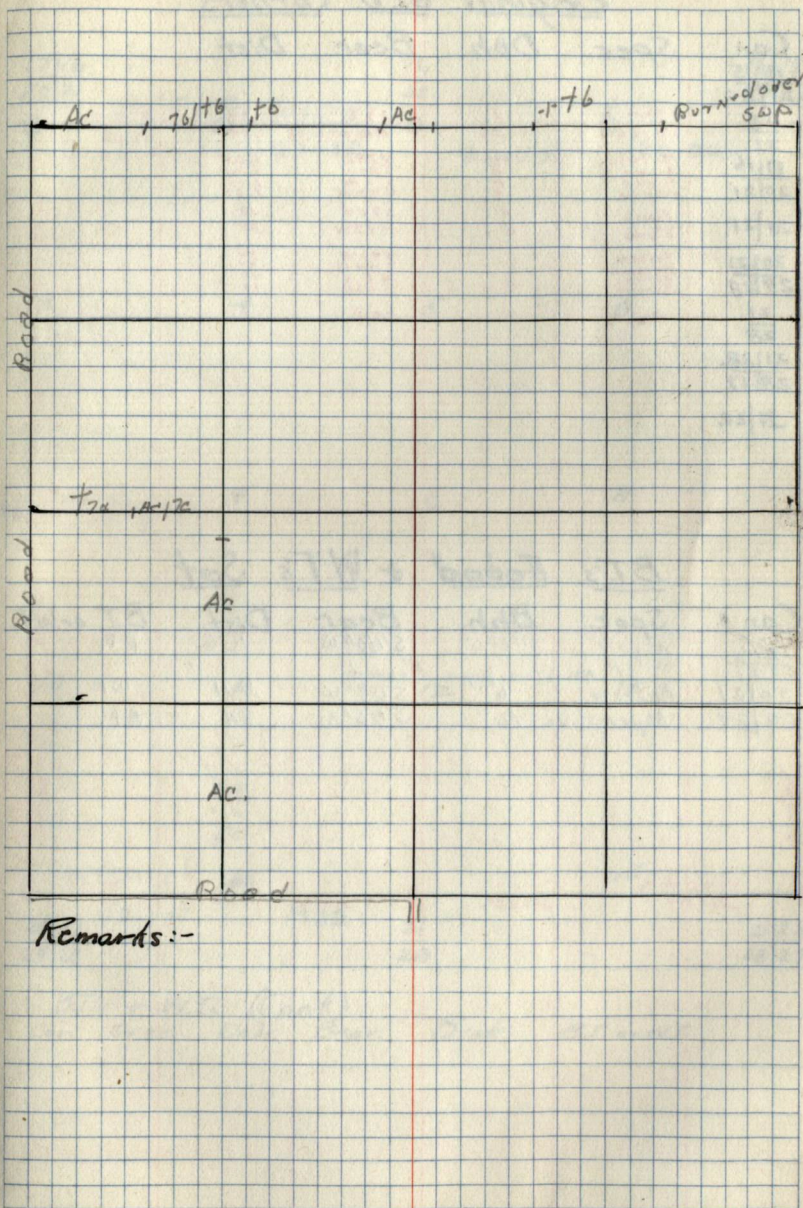


B.T.'s + W.T.'s (Cont.)
Cor. Spec. Dbh. Bear. Dist. B.T. or WT.

Notes

Chains

Chains

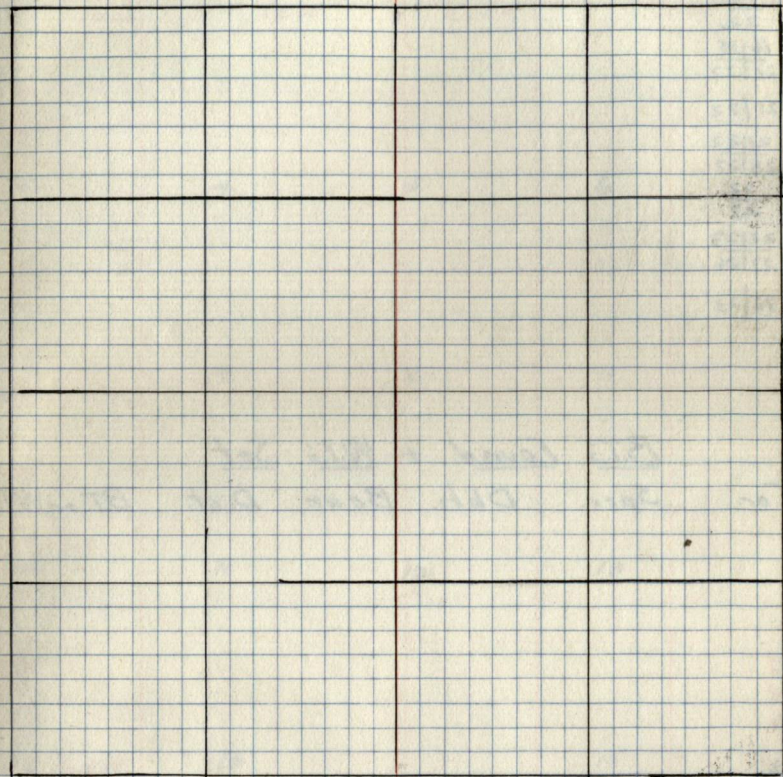
Type + Cultural Map

Remarks:-

Notes

Chains

Chains

Type + Cultural Map

Remarks: -

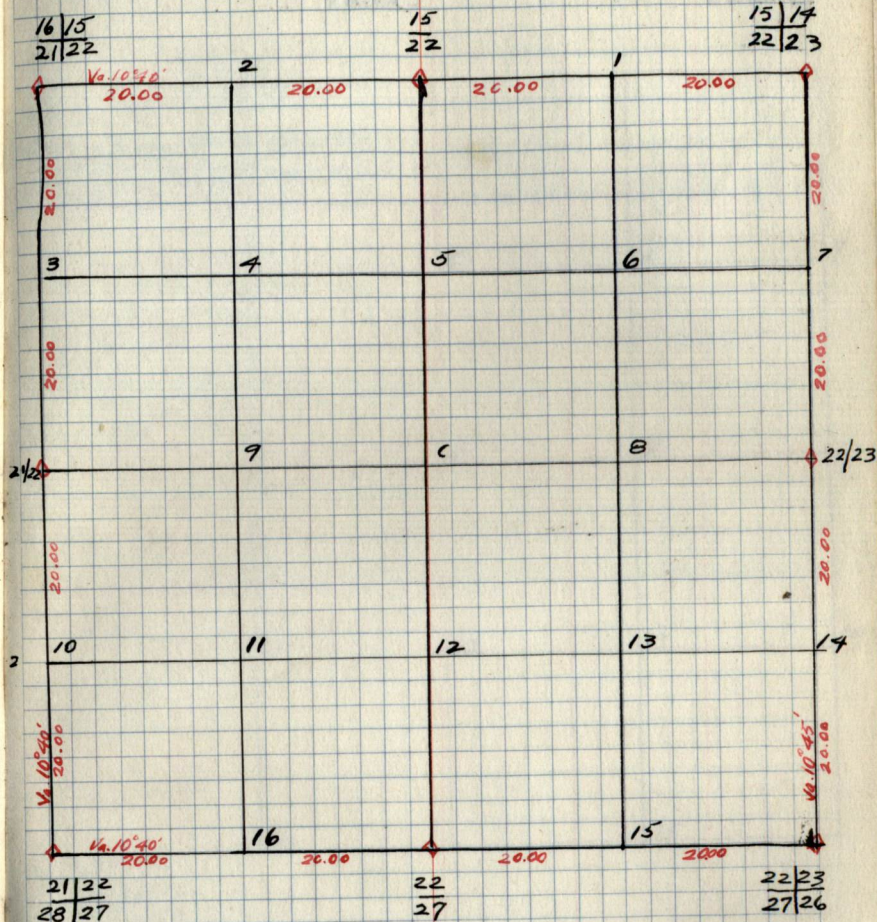
Original G.L.O. Corners

Cor. Spec. Dbh. Bear Dist.

15	14
22	23
15	22
16	15
21	22
21	22
28	27
22	27
22	23
27	26
22	23

B.T.'s Found + W.T.'s Set

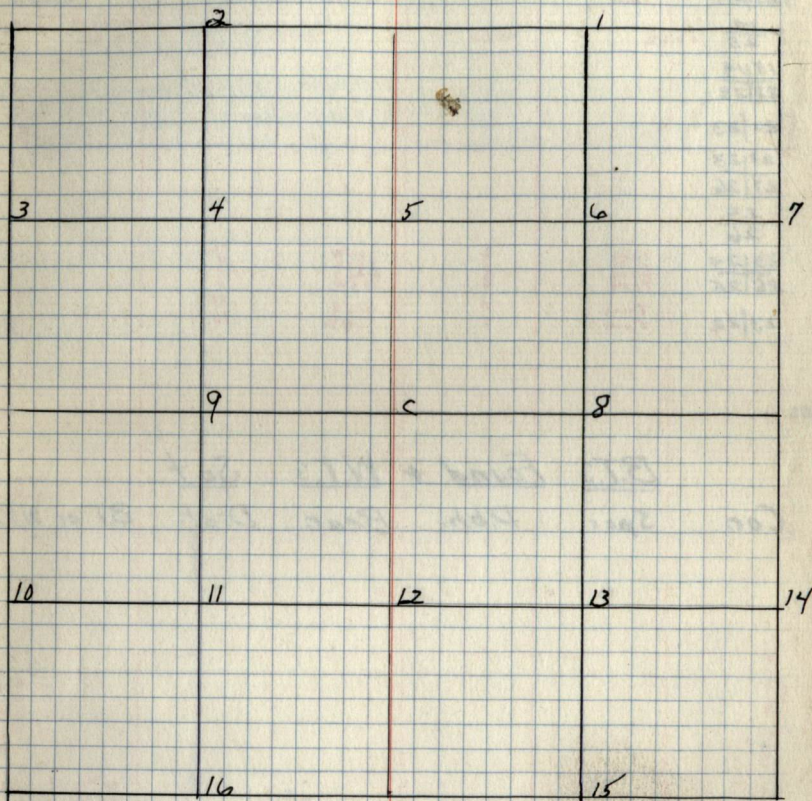
Cor. Spec. Dbh. Bear Dist. B.T. or W.T.

B.T. + W.T.'s (Cont.)
Cor. Spec. Dbh. Bear Dist. B.T. or W.T.

Notes

Chains

Chains

Type + Cultural Map

Remarks: -

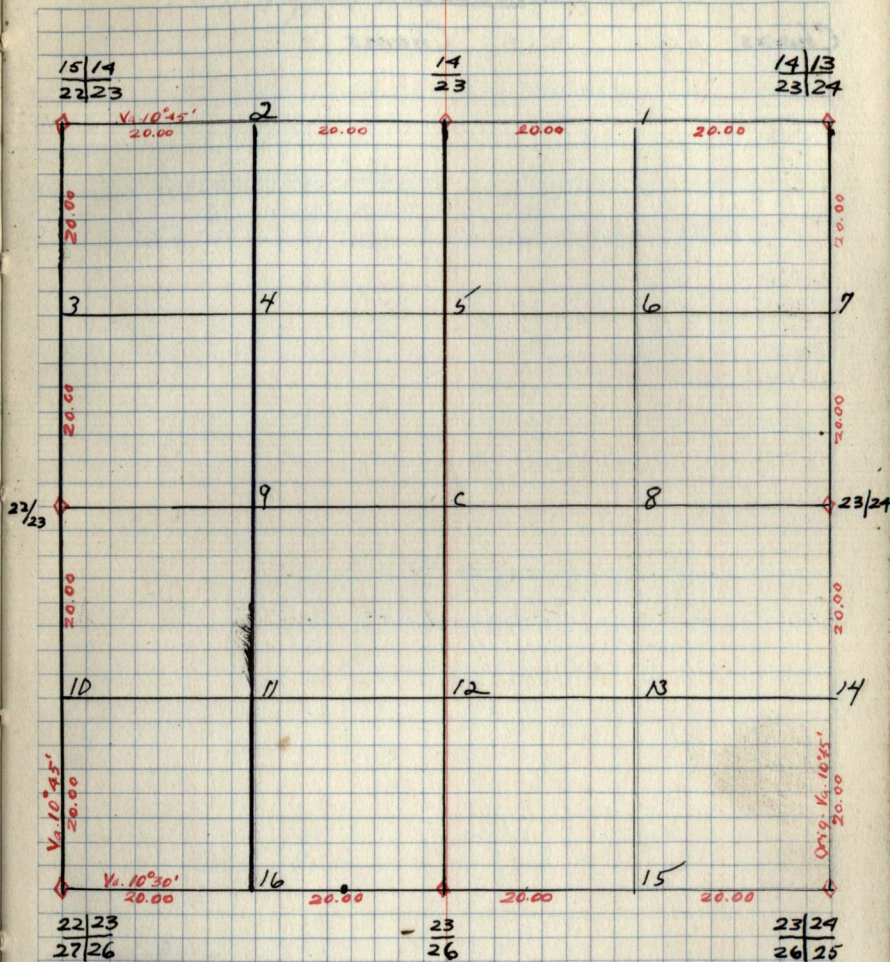
Original G.L.O. Corners

Cor.	Spec.	D.bh.	Bear.	Dist.
14/13	Tam	6	N 53° E	.06
23/24	Tam	6	S 85° E	.25
	Tam	6	S 64° W	.23
	Tam	6	N 43° W	.18
$\frac{14}{23}$				
15/14				
22/23				
22/23				
22/23				
27/26				
$\frac{23}{26}$				
23/24	Tam	6	S 34° W	.13
26/25	Tam	6	S 13° E	.43
	Tam	6	N 24° W	.36
23/23	Tam	6	S 15° E	.13
	Tam	6	S 74° W	.16

B.T.'s Found + W.T.'s Set

Cor. Spec. D.bh. Bear. Dist. B.T. or W.T.

by-

B.T.'s + W.T.'s (Cont.)

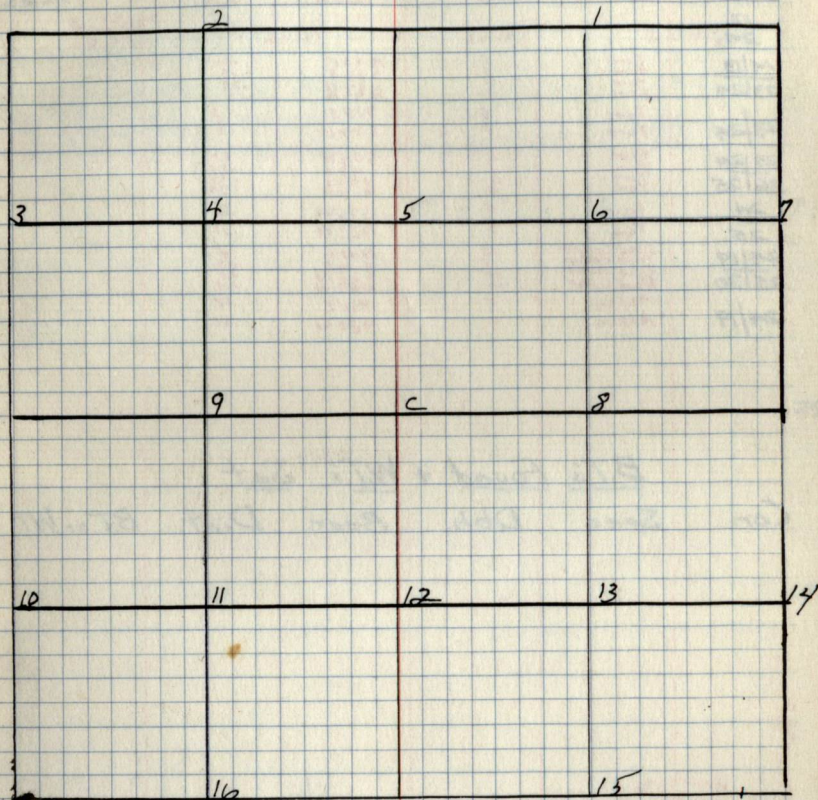
Cor. Spec. D.bh. Bear. Dist. B.T. or W.T.

Notes

Chains

Chains

Type + Cultural Map



Remarks:-

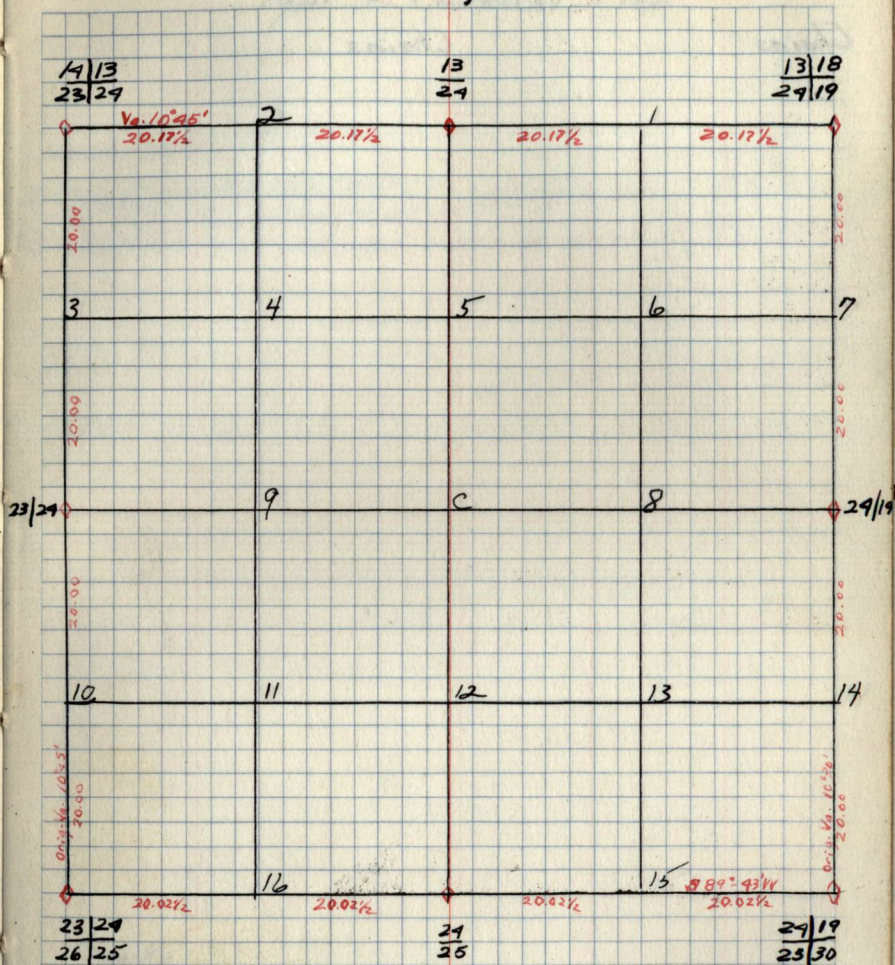
Original G.L.O. Corners

Cor.	Spec.	Dbh.	Bear.	Dist.
13/18	Dead wood	10	S 81 W	.14
24/19	Dead Pine	20	S 40 E	.13
	Dead Pine	26	N 14 E	.16
	Dead Pine	16	N 20 W	.16
13/24				
14/13	Tam	9.5	N 53 E	.06
23/24	Tam	9.5	S 33 E	.15
	Tam	9.5	S 63 W	.18
	Tam	9.5	N 73 W	.18
23/24	Tam	9.5	S 18 E	.13
	Tam	9.5	S 79 W	.16
23/24	Tam	6	S 34 W	.13
26/25	Tam	6	S 73 E	.14
	Tam	6	N 46 E	.15
	Tam	6	N 46 E	.16
24	Tam	5	S 79 W	.26
25	Tam	5	N 32 W	.31
24/19	Dead Cedar	10	N 41 E	.35
25/30	Dead Cedar	10	S 79 E	.08
	Dead Cedar	10	S 79 E	.20
	Dead Cedar	10	N 65 W	.29
24/19	Aspen	4	N 11 E	.12
	Aspen	4	N 80 W	.60

B.T.'s Found + W.T.'s Set

Cor. Spec. Dbh. Bear. Dist. B.T. or W.T.

by-



B.T.'s + W.T.'s (Cont.)

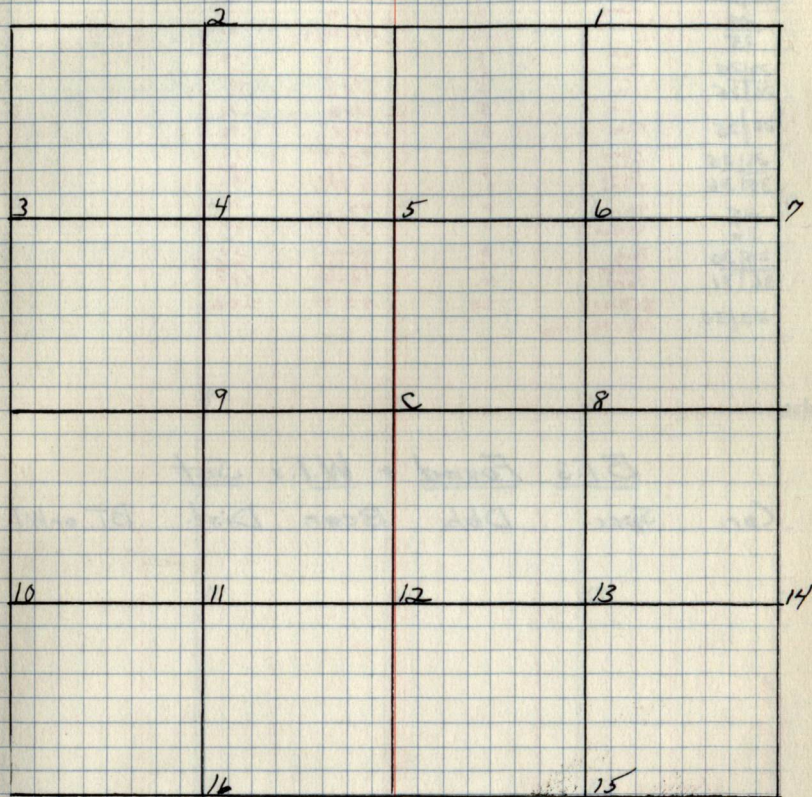
Cor. Spec. Dbh. Bear. Dist. B.T. or W.T.

Notes

Chains

Chains

Type + Cultural Map



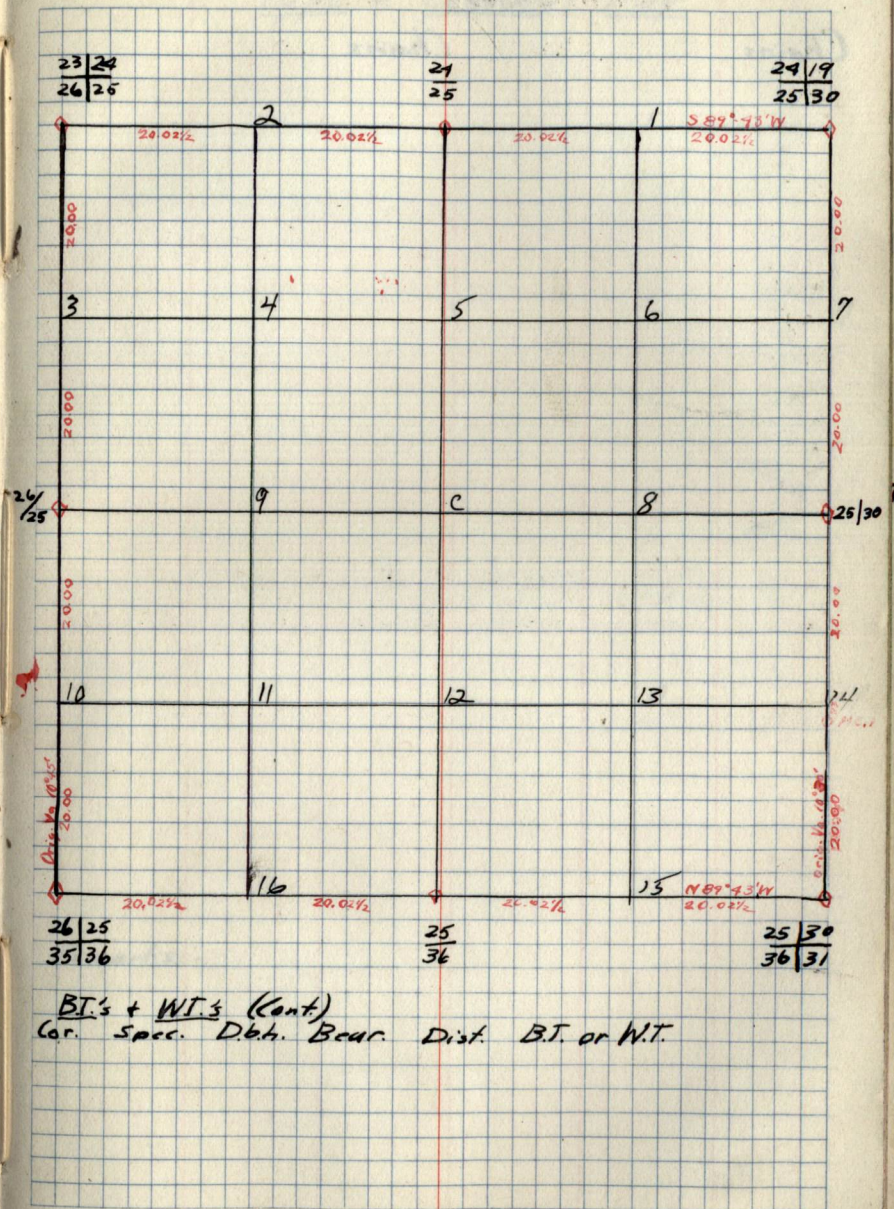
Remarks:

Original G.L.O. Corners

Cor.	Spec.	Dbh.	Bear.	Dist.
24/19	W Oak	12	N32E	.26
25/30	B Oak	10	N72W	.27
	N. Pine	6	N32W	.28
24/25	Tam	5	S74W	.26
25	Tam	5	N32W	.31
23/24	Tam	5	J54W	.13
26/26	Tam	5	N47E	.14
	Tam	5	N46E	.15
	Tam	5	N46E	.16
26/25	Tam	5	S16W	.32
	Tam	5	S4E	.40
26/25	Tam	5	N20E	.12
35/36	Tam	5	S42E	.30
	Tam	5	S31W	.42
	Tam	5	N22W	.10
25/36	Cedar	6	S31E	.30
25/30	Tam	8	N39E	.57
36/31	Cedar	12	N66W	.46
	Tam	10	S66E	1.00
25/30	Y. Pine	20	S2W	5.06
	No other tree			

B.T.'s Found + W.T.'s Set

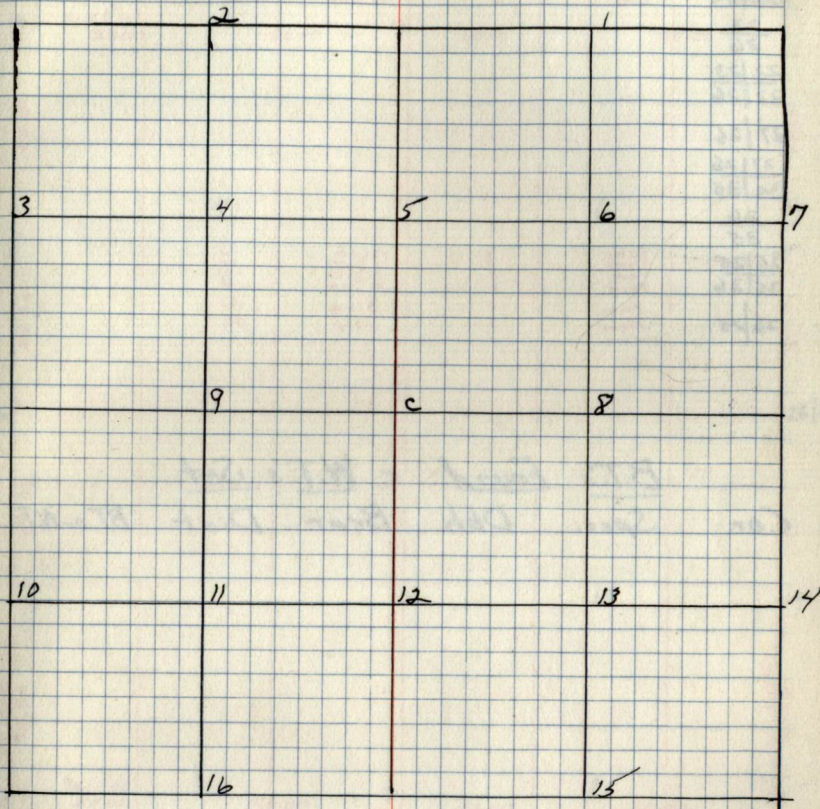
Cor. Spec. Dbh. Bear. Dist. B.T. or W.T.



Notes

Chains

Chains

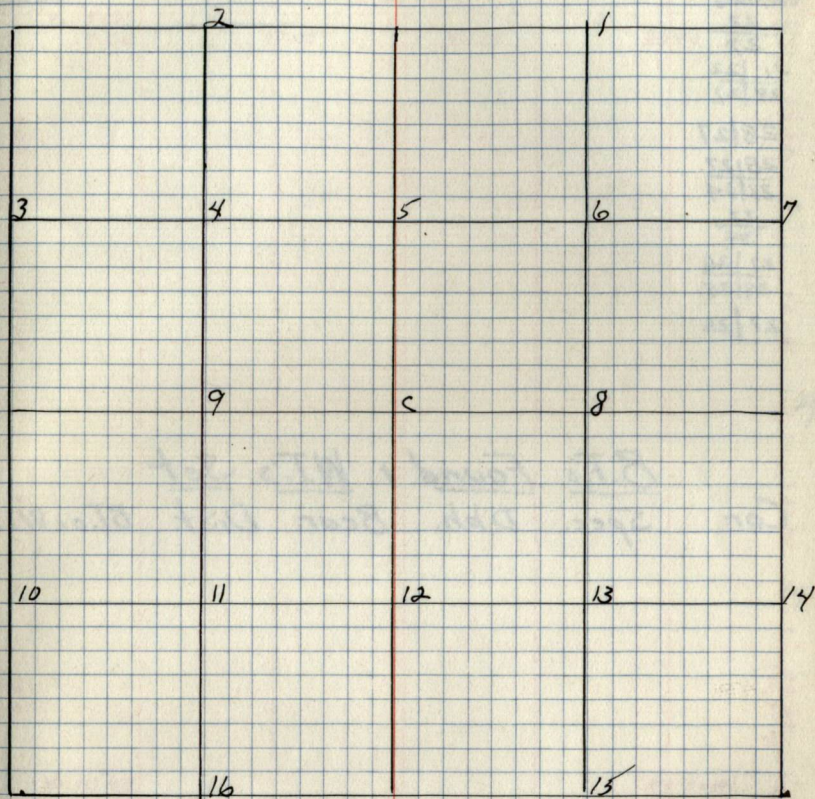
Type + Cultural Map

Remarks:-

Chains

Notes

Chains

Type + Cultural Map

Remarks:-

Notes

Chains

Line E of $\frac{20 \frac{1}{2}}{39 \frac{1}{2}}$

Ac1

19.92 chs $\frac{1}{16}$ #239.84 $\frac{21}{38}$

Line N. of F1/4 Cor. Sec. 28

Ac 6

Line E of $\frac{1}{16}$ #5

Ac

Chains

Line S of $\frac{1}{16}$ #2

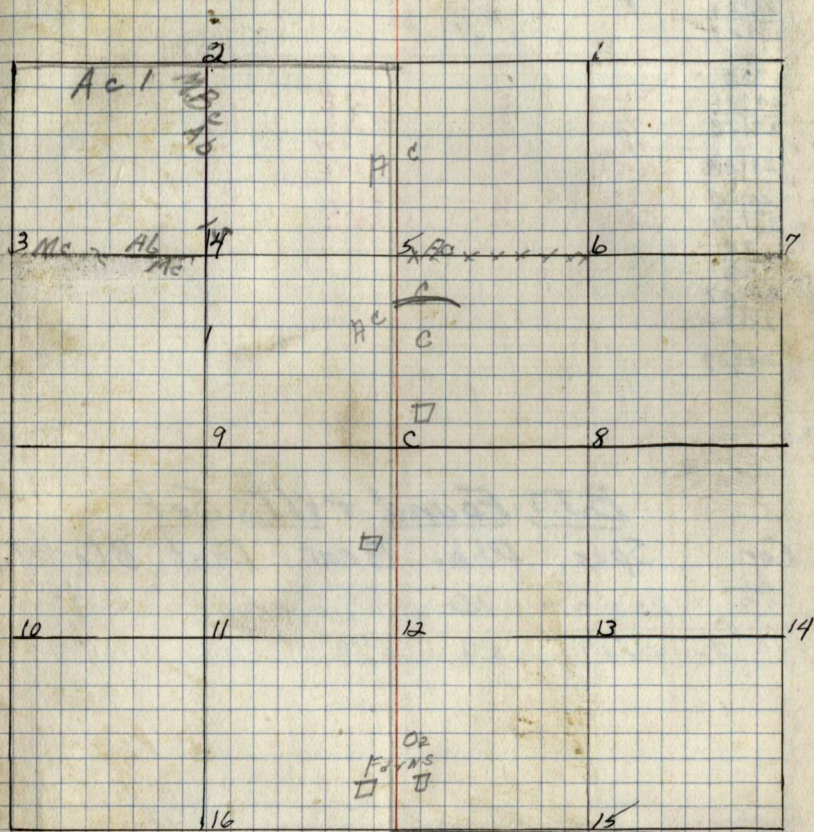
MBC

6 chs Ab

18 chs Is

19.80 chs $\frac{1}{16}$ #4

Type & Cultural Map



Remarks -

Notes

Chains

Chains

Line of F/16 #14

80 50 /
1700 hrs Highway

50 hrs Freeway

1200 hrs

~~1200 hrs~~

Boots 1/16 #13

Type + Cultural Map

Original G.L.O. Corners

Cor.	Spec.	D.b.h.	Bear.	Dist.
19/20	X			
30/29	X			
19/30	W. Pine	29	S22E	.90
29/19	No other tree	12	N39E	.20
25/30	W. Oak	12	N76W	.39
	N. Pine	16	N59E	.29
	N. Pine	20	S2W	5.06
	No other tree	X	S60W	.74
25/30	X			
36/31	X			
30/31	X			
30/29	Birch	6	S6E	.14
31/32	elm	7	S39W	.32
	Birch	7	N6E	.37
	N. Pine	19	S48E	.95
30/29	N. Pine	15	S18W	.70
M.C.2	Cedar	5	N89E	4.20
	Cedar	10	S87E	4.21
M.C.1	N. Pine	29	S27W	.90
	W. Pine	—	S15E	1.00
W.C.1	No trees	14	N19E	.38
M.C.3		16	S16E	.41

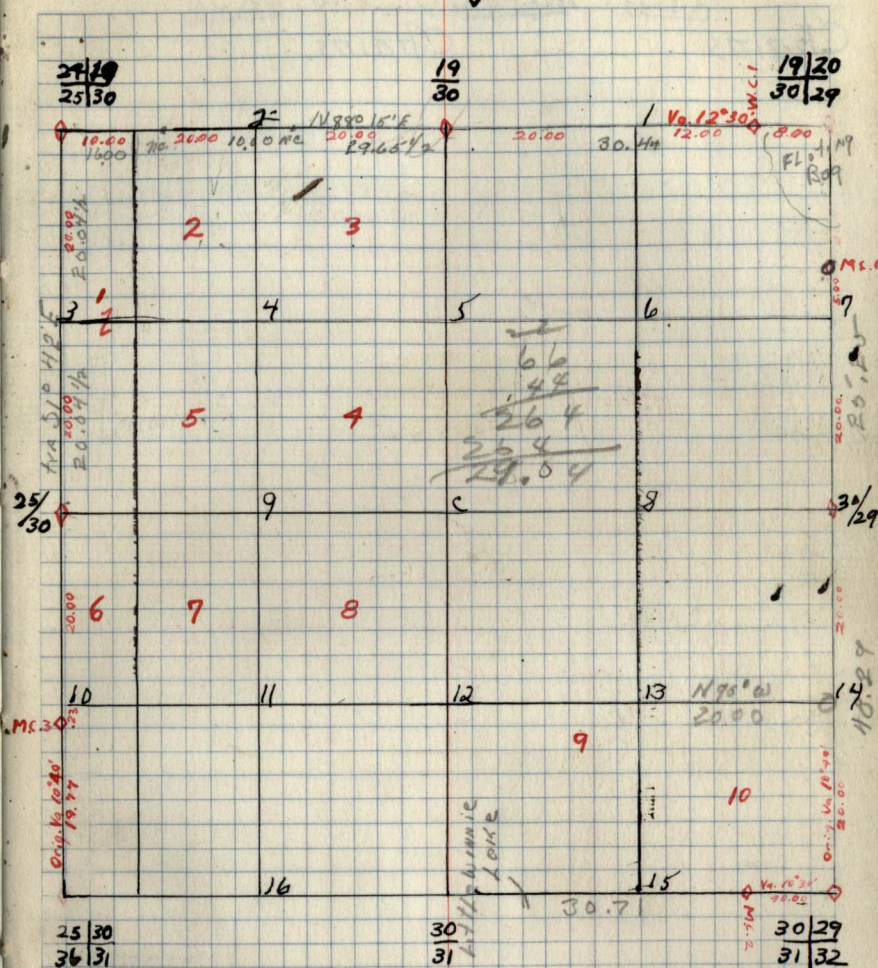
B.T.'s Found + W.T.'s Set

Cor.	Spec.	D.b.h.	Bear.	Dist.	B.T. or W.T.
24/19	W. Oak	6"	S64°30'W	.58 1/2	B.T.
25/30	W. P.	20"	N9°W	.93	B.T.
	Aspen	16"	S17°30'E	.41 1/2	B.T.
30/29	ELM	7"	S68°E	.26	B.T.
31/32	D Birch	20"	S7°E	.14	B.T.
	Spruce	24"	S68°W	.47	B.T.
	Drod ELM	5"	N59°W	.32	B.T.
	P. Birch	8"	N7°E	.47	B.T.
	Birch	9"	N24°W	.23 1/2	B.T.
	ELM Stamp	4"	S44°W	.30	B.T.
30/29	W. PINE	9"	S60°W	.13 1/2	B.T.
	W. PINE	7"	S36°E	.59	B.T.
M.C.	Stamp hole		S26°30'W	.90	B.T.

MC post scribed good condition

25/30	OAK	10"	S68°15'W	
	OAK	16"	S70°15'E	

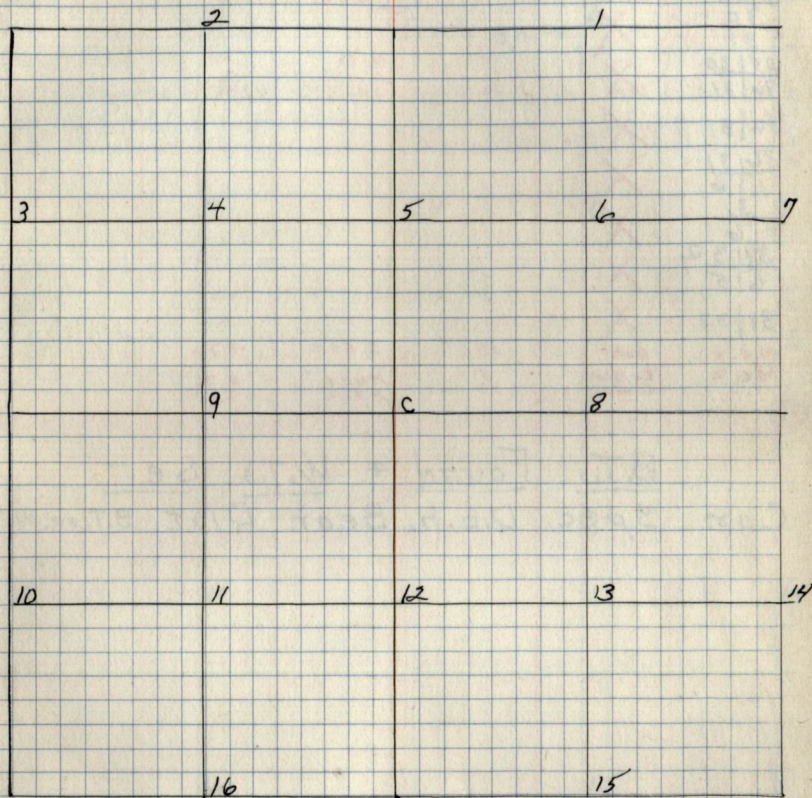
by-

B.T. & W.T.'s (Cont.)
Cor. Spec. D.b.h. Bear. Dist. B.T. or W.T.

Notes.

Chains

Chains.

Type 2 Cultural Map

Remarks:

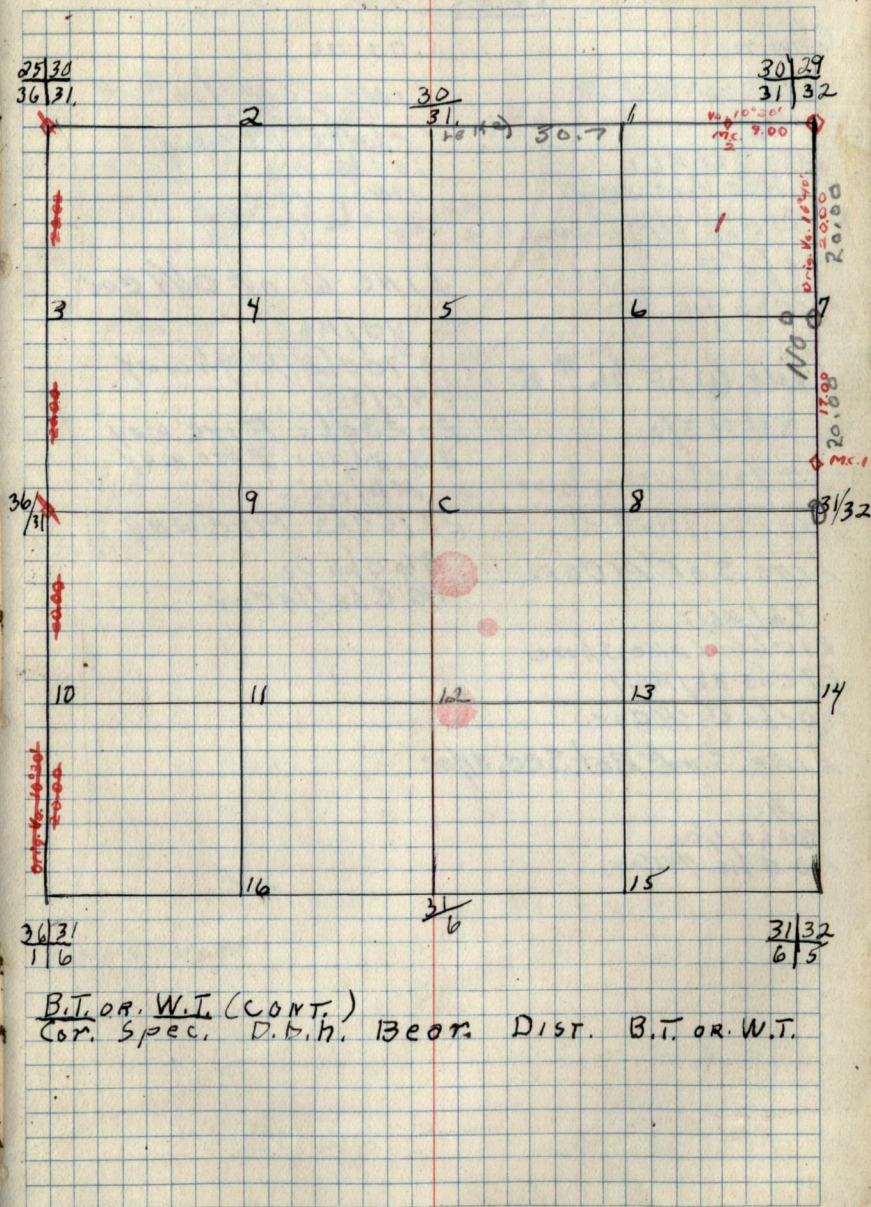
Original G.L.O. Corners.

Cor. Spec. D.b.h. Bear. DIST.

30 29	Elm	5	SE	.14
31 32	Elm	7	S44W	.39
30	Birch		N37W	.32
31	X		N6E	.47
25 30	Tan	8	N34E	.57
36 31	Tan	12	N64W	.76
36 31	X Trees	10	S66E	1.00
36 31	X			
31	X			
31 32	X			
31 32	X			
M.C. 1	Oak	18	S 60 E	4.76
M.C. 2	Cedar	5	N 69 E	4.20
	Cedar	10	S 87 E	4.21

B.T.'s Found & W.T.'s Set.

Cor. Spec. D.b.h. Bear. DIST. B.T. OR. W.T.



Notes

Chairs.

Line S of 1/16 # 2

02

80chs 86/K61

8.64chs Fireway

15.21chs Highway 46

80/50

40chs 1/16 # 9

Line W of 1/16 # 5

80/K61

17.21chs Highway

20chs 1/16 # 4

Line S. of 1/4 cor.

86/K61

21chs. Lake shore

27chs 86/K61

40chs 1/4 cor.

Line S. of Bet. Sec. 3/32

MC

80chs 1/02

40chs 1/4 cor.

Chairs.

Line W of 1/16 # 4

80/50

5.64chs Fireway

10chs MC

19chs 1/02

20chs 1/16 # 3

Line W. of 1/4 cor.

80/K61

5.70chs Highway

80/50

20.23chs Fire way

23.85chs Fire way

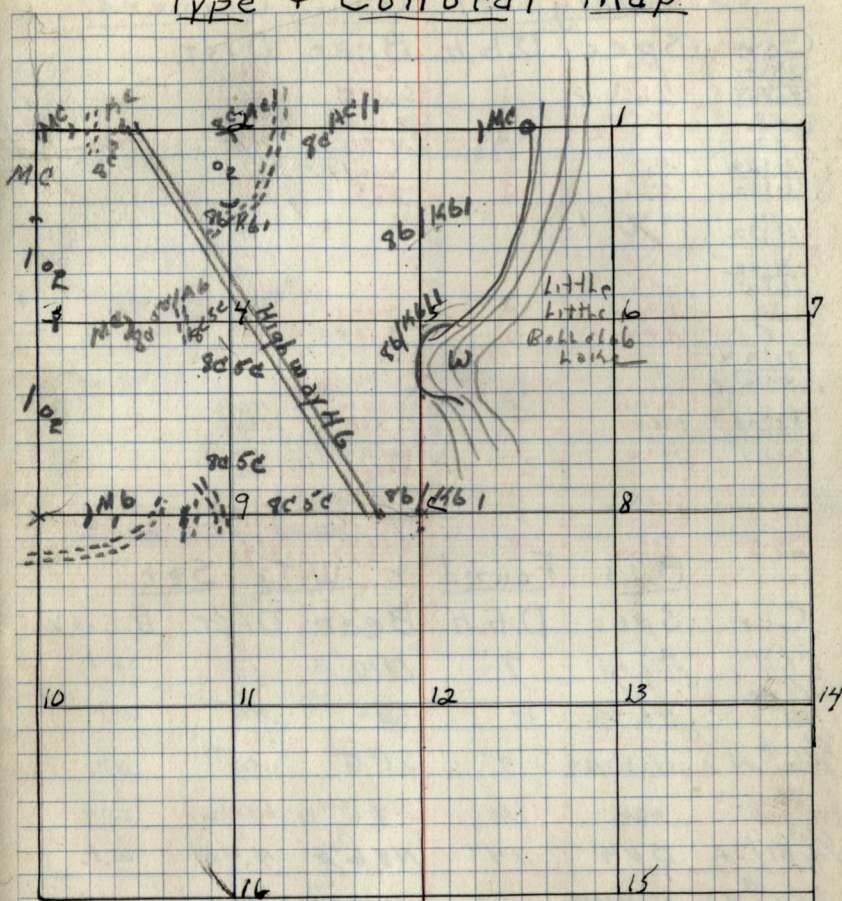
MC/1

27.16chs Fire way

36chs 02

40chs 1/4 cor

Type & Cultural Map



Remarks:

Notes

Chains

LINE E. Bet. sec. 29-33

5c

40chs B6/36

8chs 5c/AB

Rocks 5c

40.50chs 1/4 cor

LINE N. of F 1/10 49

AB/1

2chs 5c 2c AB

40.80chs 1/10 49

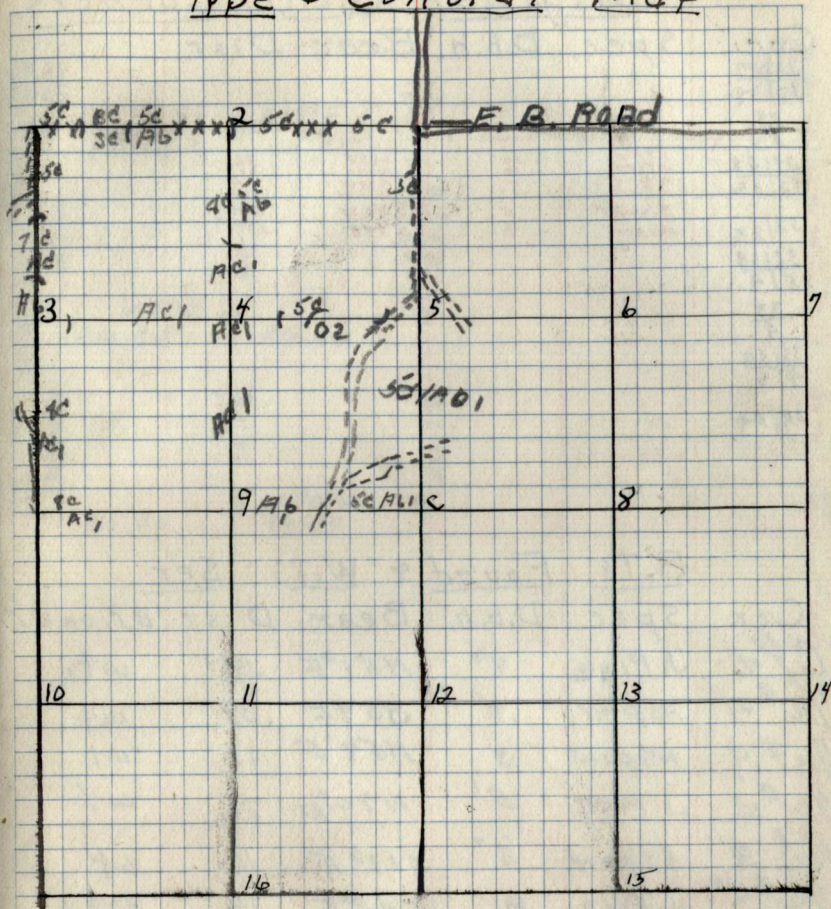
Chains.

LINE S. of F 1/4 cor

5c/1/AB

34.90chs Fireway

40.26chs C 1/4 cor

Type & Cultural MapRemarks:

No B. f. s. Found For 1/4 cor 32-33
 Marked By Fireway as a Corner

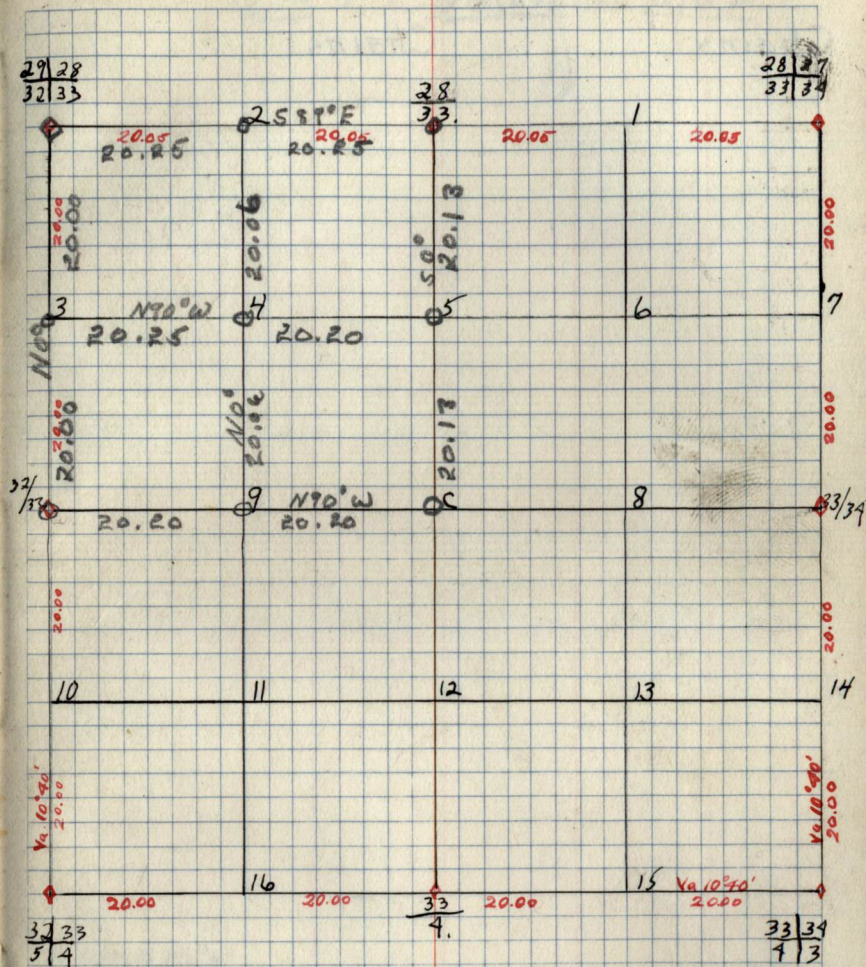
Original G.L.O. Corners,
Spec. D.b.h. Bear. Dist.

Cor.	Spec.	D.b.h.	Bear.	Dist.
28/29				
33/34				
28/33				
29/28	J. Pine	10	S 47° E	.36
32/33	J. Pine	10	N 37° E	.30
	J. Pine	12	S 29° W	.90
	J. Pine		N 22° W	.64
32/33	Birch	5	S 39° W	.11
	Aspen	4	S 73° E	.33
32/38				
5/9				
33/4				
33/34				
4/3				
33/34				

B.T.'s Found & W.T.'s Set.

Cor.	Spec.	D.b.h.	Bear.	Dist.	B.T. OR W.T.
C/4	J. PINE	8"	N 51° E	.12	wt.
1/16 # 4	ASPEN	8"	S 59° E	.09	wt.
1/16 # 9	ASPEN	5"	N 58° E	.17	wt.
1/16 # 2	J. PINE	5"	N 70° E	.26	wt.
1/16 # 3	ASPEN	8"	S 12° E	.16	wt.
1/16 # 5	J. PINE	10"	S 82° E	.14	wt.

Sec. 33. T146 N. R. 26 W.
by Haberle

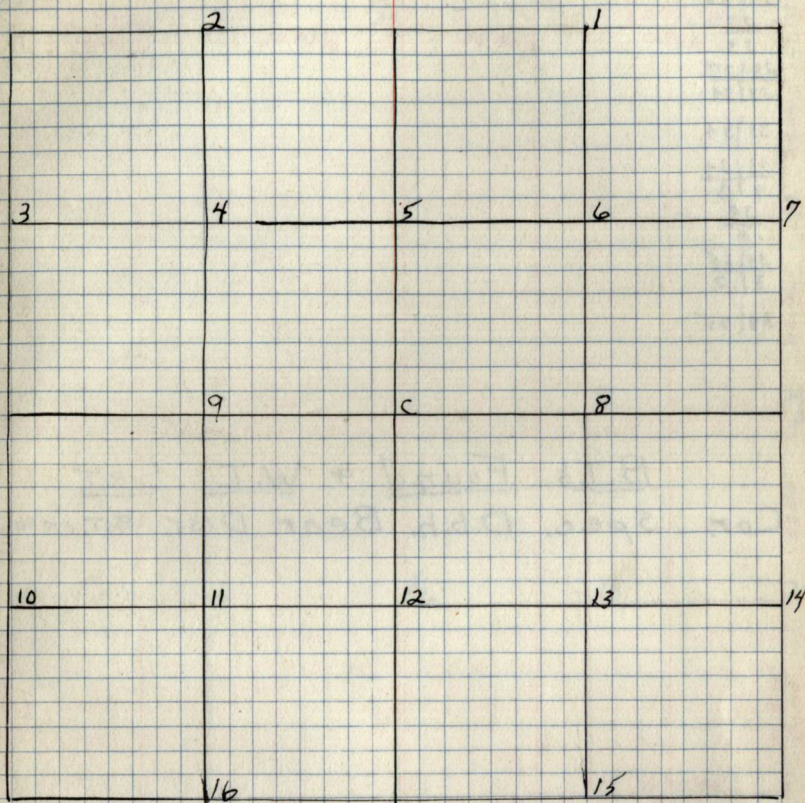


B.T.'s & W.T.'s (CONT.)
Cor. Spec. D.b.h. Bear. Dist. B.T. OR W.T.

Notes.

Chains.

Chains.

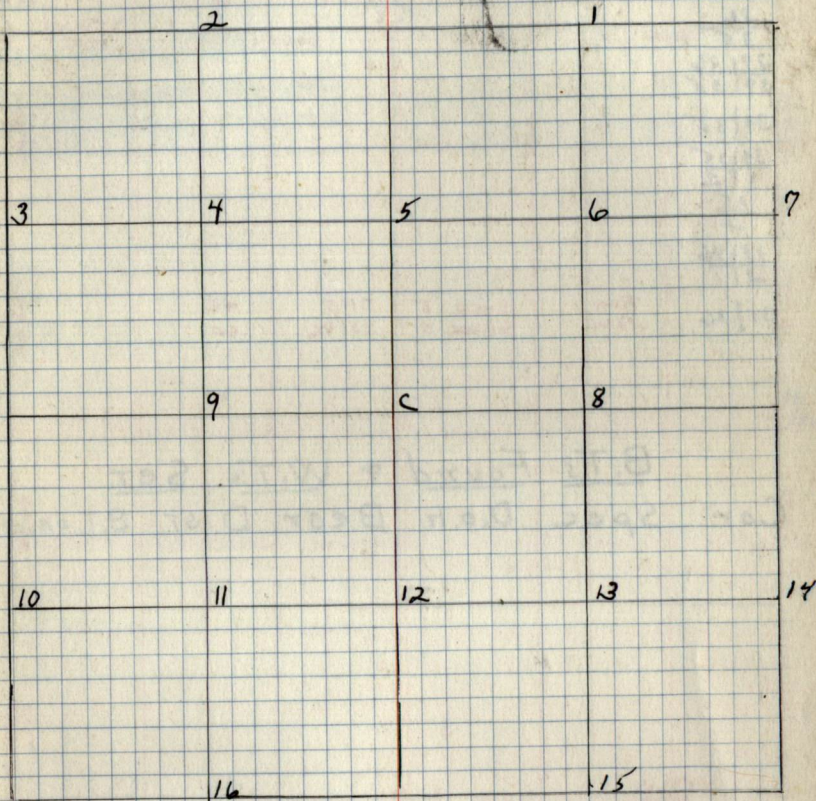
Type + Cultural Map

Remarks:

Notes.

Chains.

Chains:

Type & Cultural Map.

Remarks:

Original G.L.O. Corners.

Cor. Spec. D.b.h. Bear. DIST.

26/25
35/36Tam
Tam
Tam5
5
5N20E
S42E
S21W.12
.30
.4226
3527/26
34/35

34/35

34/35
3/235
235/36
2/1

35/36

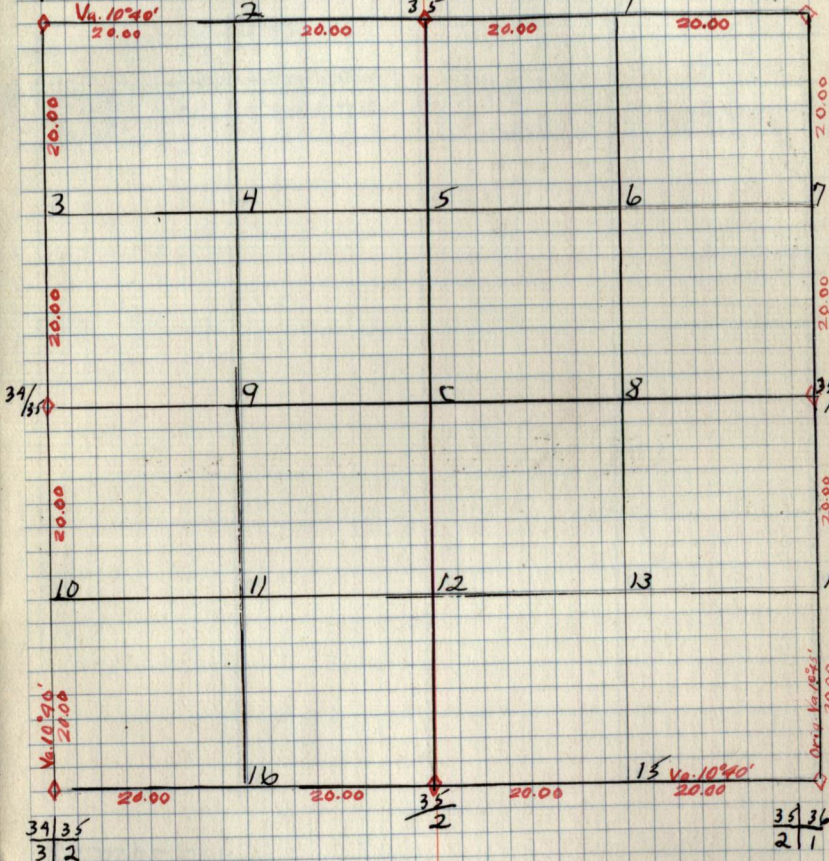
Tam
TamS10E 6
S21W 5SIDE
S21W.42
.60

B.T.'s Found & W.T.'s Set.

Cor. Spec. D.b.h. Bear. DIST. B.T. OR. W.T.

Sec. 35 T146N R. 26W.
by -27/26
34/3526
3526/25
35/3626
3534/35
3/235
235/36
2/1

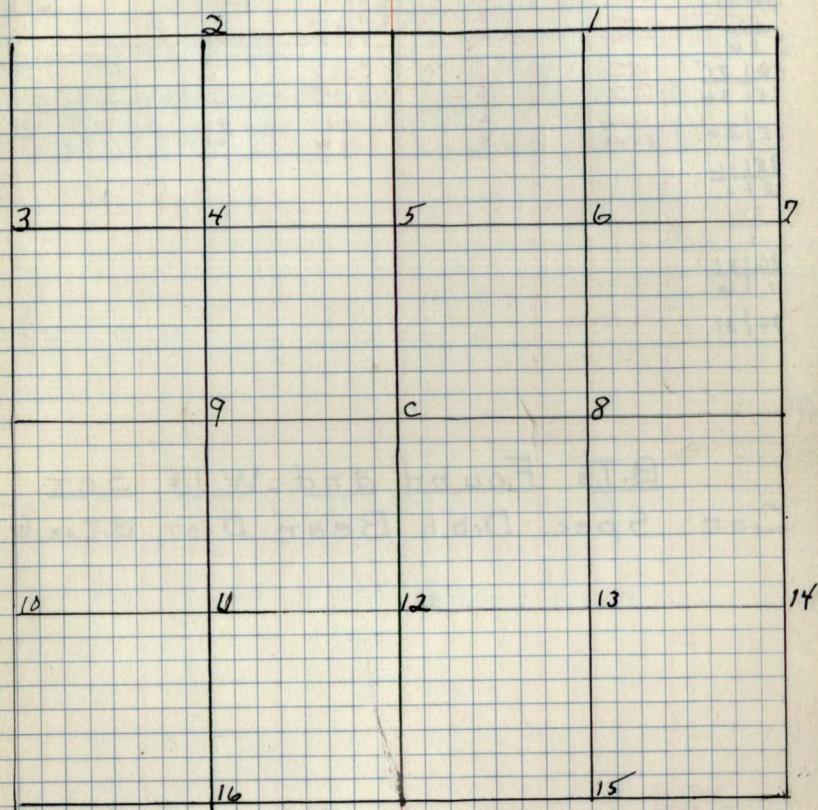
35/36

34/35
3/235
235/36
2/135/36
2/135/36
2/135/36
2/135/36
2/135/36
2/135/36
2/135/36
2/135/36
2/135/36
2/135/36
2/135/36
2/135/36
2/135/36
2/135/36
2/1B.T.'s & W.T.'s (CONT)
Cor. Spec. D.b.h. Bear. DIST. B.T. OR. W.T.

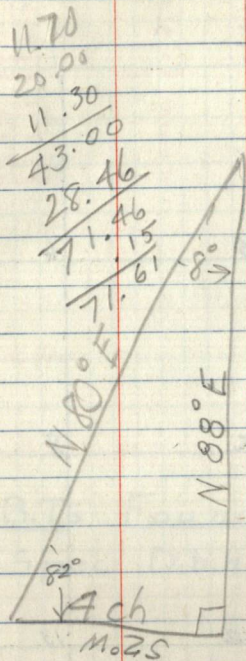
Notes

Chains

Chains.

Type & Cultural Map

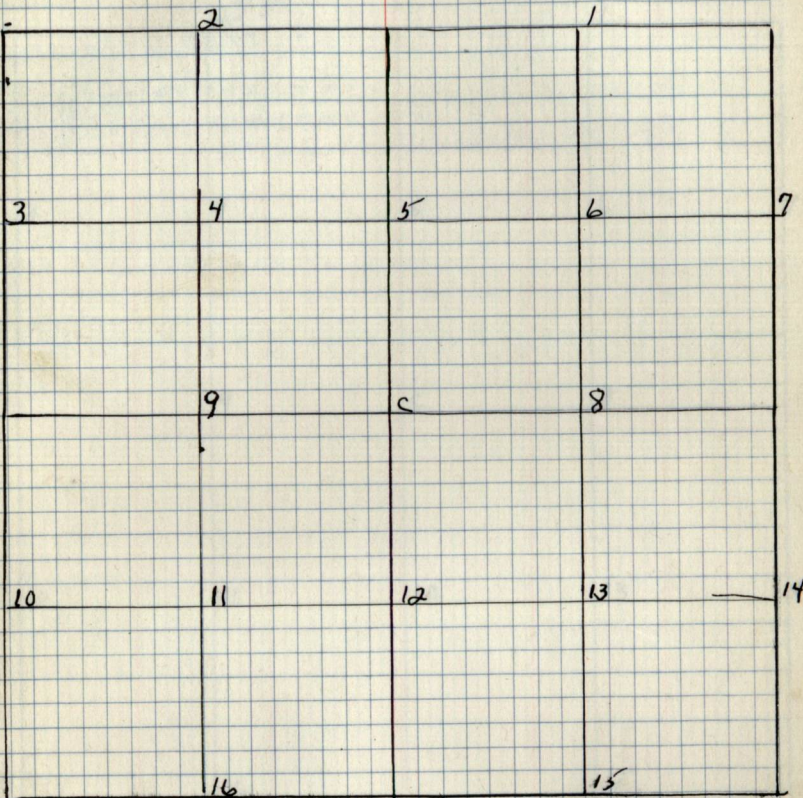
Remarks:



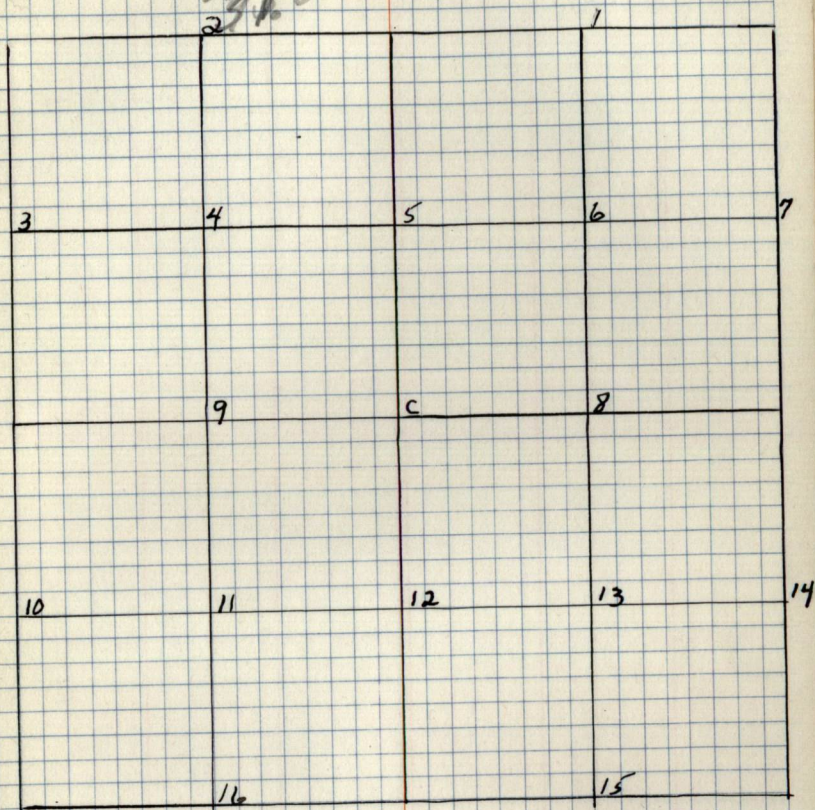
$$\begin{array}{r}
 .07 \\
 21.5 \\
 .007 \\
 \hline
 1.505
 \end{array}$$

$$\begin{array}{r}
 71.15 \\
 4 \\
 \hline
 28.460
 \end{array}$$

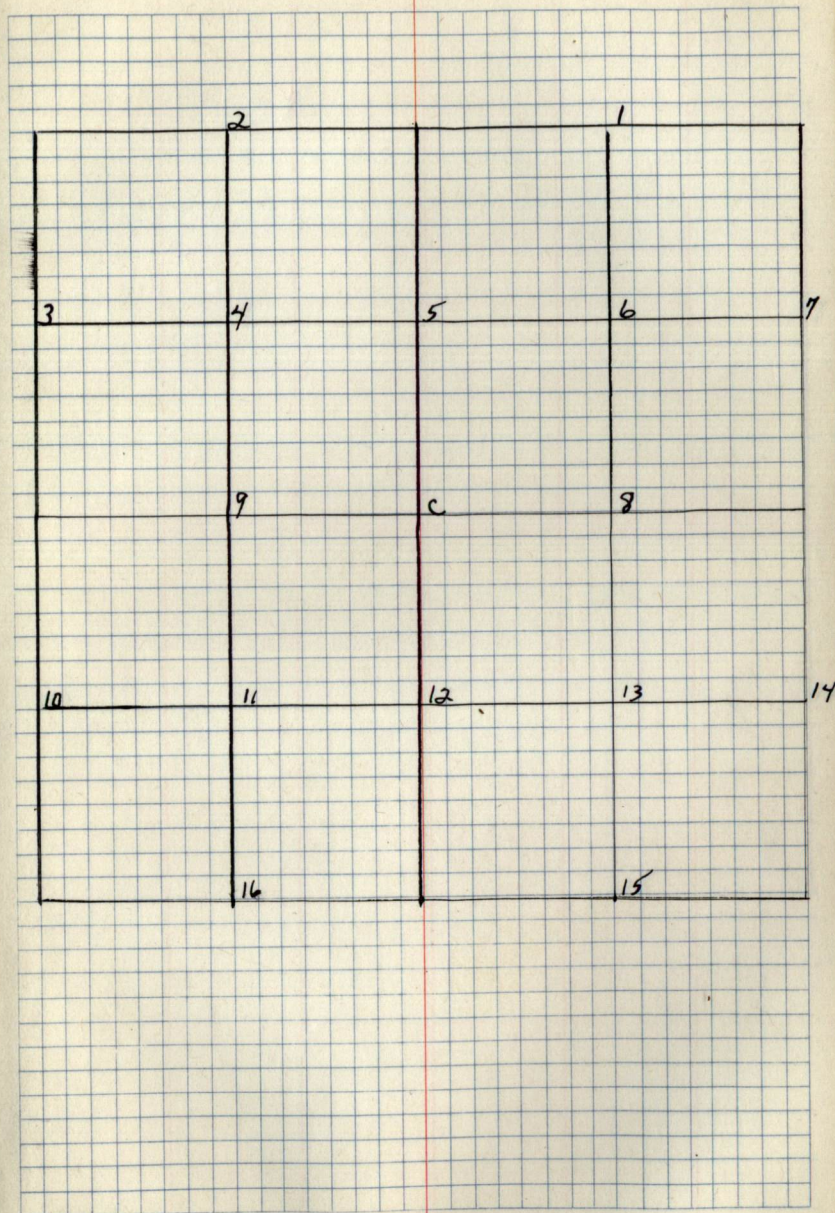
$$\begin{array}{r}
 \tan 82^\circ = \frac{x}{4} \\
 7.115 = \frac{x}{4}
 \end{array}$$

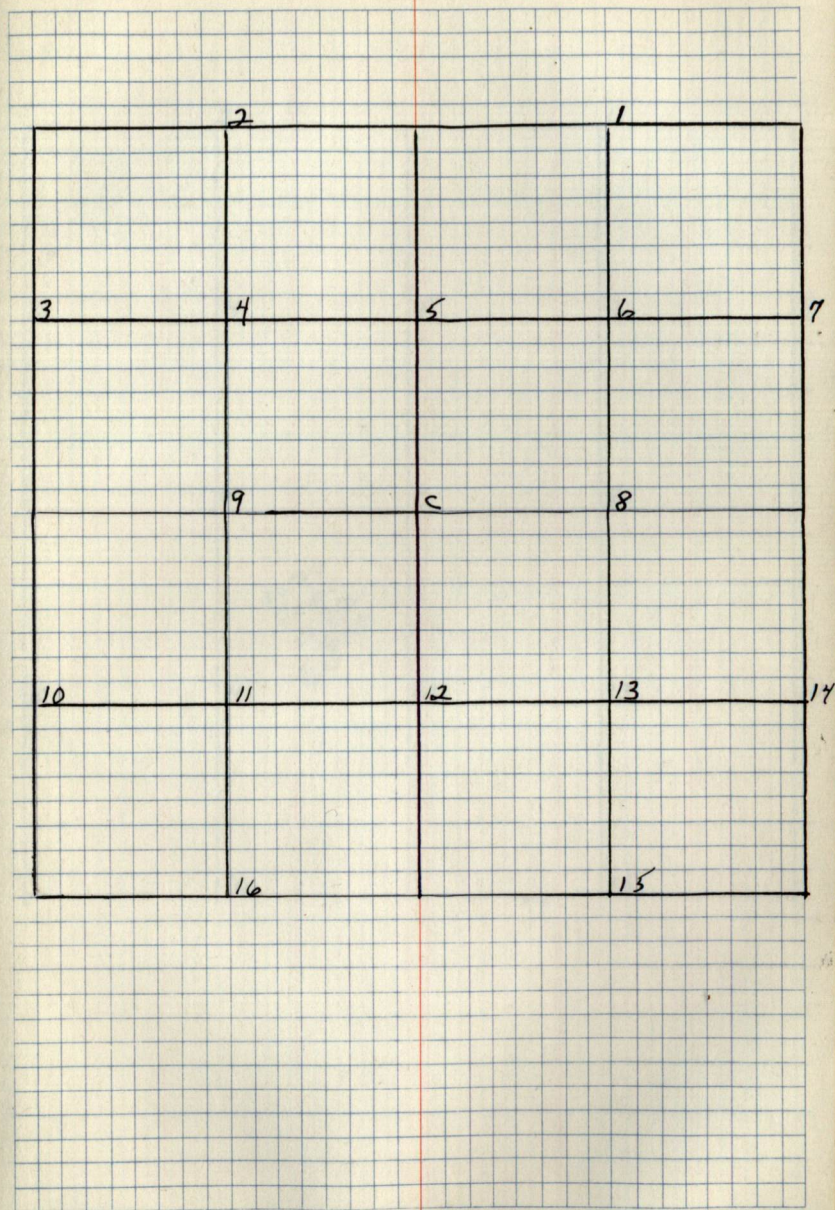


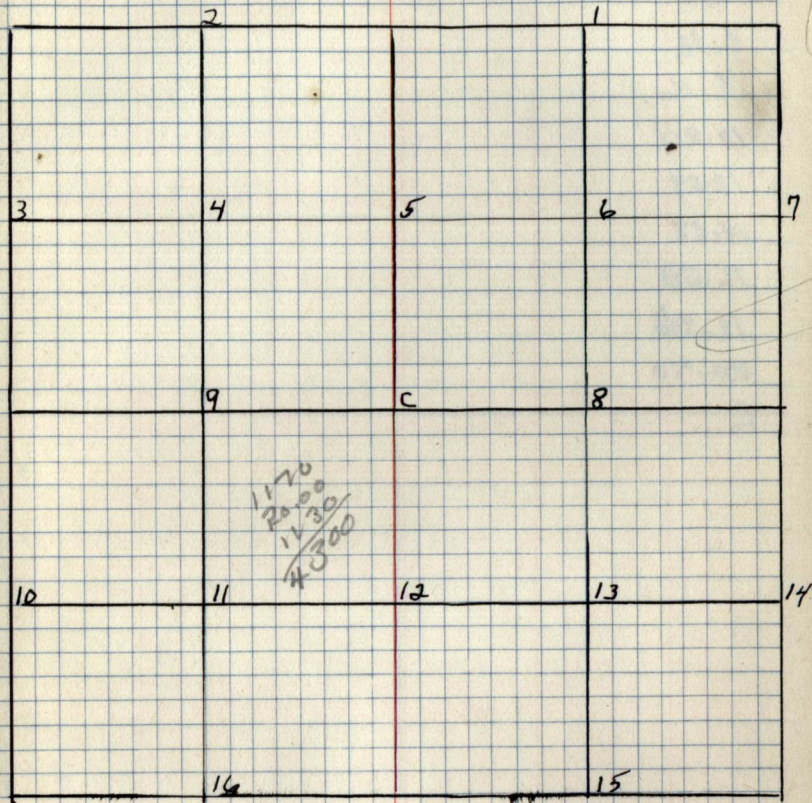
10267
 7141
~~4.1.0~~



24 Chs. @ 5P.
36 Bds.







2.4

4.8

6.12

8.16

10.20

12.24

14.28

16.32

18.36

20.40

2

