

Office Copy
T146NR25W
D.R.

FIELD BOOK

CCC

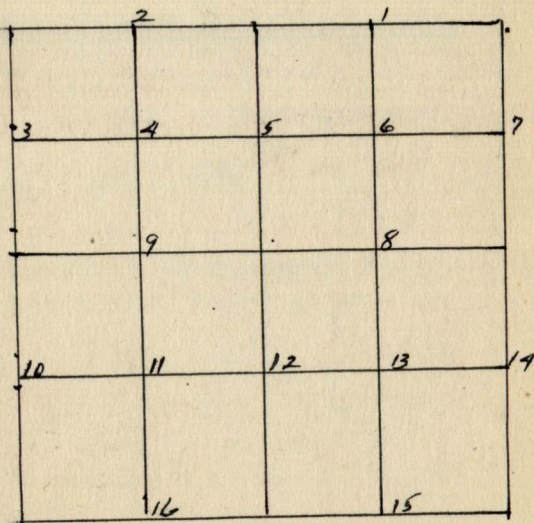
22

1401

Table of Departure Corrections

Distance	15'	30'	45'	1.00'	1.15'	1.30'	1.45'	2.00'
	ERROR	ERROR	ERROR	ERROR	ERROR	ERROR	ERROR	ERROR
1 chain	-	-	.013	.017	.021	.026	.030	.039
20 "	.088	.18	.26	.35	.44	.52	.61	.70
40 "	.18	.35	.52	.70	.87	1.05	1.22	1.40
60 "	.26	.52	.79	1.05	1.31	1.57	1.83	2.10
80 "	.35	.70	1.05	1.40	1.74	2.10	2.44	2.80

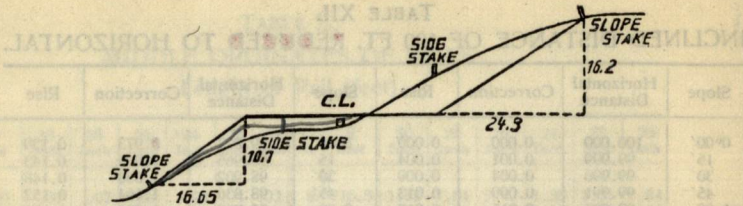
Method For Numbering 16th Contents



Scanned

Aug. 3, 2012

Ronney



DISTANCES FROM SIDE STAKES FOR CROSS-SECTIONING.

SLOPE 1 1/2 TO 1. ROADWAY OF ANY WIDTH.

	0	.1	.2	.3	.4	.5	.6	.7	.8	.9	
0	0.00	0.15	0.30	0.45	0.60	0.75	0.90	1.05	1.20	1.35	0
1	1.50	1.65	1.80	1.95	2.10	2.25	2.40	2.55	2.70	2.85	1
2	3.00	3.15	3.30	3.45	3.60	3.75	3.90	4.05	4.20	4.35	2
3	4.50	4.65	4.80	4.95	5.10	5.25	5.40	5.55	5.70	5.85	3
4	6.00	6.15	6.30	6.45	6.60	6.75	6.90	7.05	7.20	7.35	4
5	7.50	7.65	7.80	7.95	8.10	8.25	8.40	8.55	8.70	8.85	5
6	9.00	9.15	9.30	9.45	9.60	9.75	9.90	10.05	10.20	10.35	6
7	10.50	10.65	10.80	10.95	11.10	11.25	11.40	11.55	11.70	11.85	7
8	12.00	12.15	12.30	12.45	12.60	12.75	12.90	13.05	13.20	13.35	8
9	13.50	13.65	13.80	13.95	14.10	14.25	14.40	14.55	14.70	14.85	9
10	15.00	15.15	15.30	15.45	15.60	15.75	15.90	16.05	16.20	16.35	10
11	16.50	16.65	16.80	16.95	17.10	17.25	17.40	17.55	17.70	17.85	11
12	18.00	18.15	18.30	18.45	18.60	18.75	18.90	19.05	19.20	19.35	12
13	19.50	19.65	19.80	19.95	20.10	20.25	20.40	20.55	20.70	20.85	13
14	21.00	21.15	21.30	21.45	21.60	21.75	21.90	22.05	22.20	22.35	14
15	22.50	22.65	22.80	22.95	23.10	23.25	23.40	23.55	23.70	23.85	15
16	24.00	24.15	24.30	24.45	24.60	24.75	24.90	25.05	25.20	25.35	16
17	25.50	25.65	25.80	25.95	26.10	26.25	26.40	26.55	26.70	26.85	17
18	27.00	27.15	27.30	27.45	27.60	27.75	27.90	28.05	28.20	28.35	18
19	28.50	28.65	28.80	28.95	29.10	29.25	29.40	29.55	29.70	29.85	19
20	30.00	30.15	30.30	30.45	30.60	30.75	30.90	31.05	31.20	31.35	20
21	31.50	31.65	31.80	31.95	32.10	32.25	32.40	32.55	32.70	32.85	21
22	33.00	33.15	33.30	33.45	33.60	33.75	33.90	34.05	34.20	34.35	22
23	34.50	34.65	34.80	34.95	35.10	35.25	35.40	35.55	35.70	35.85	23
24	36.00	36.15	36.30	36.45	36.60	36.75	36.90	37.05	37.20	37.35	24
25	37.50	37.65	37.80	37.95	38.10	38.25	38.40	38.55	38.70	38.85	25
26	39.00	39.15	39.30	39.45	39.60	39.75	39.90	40.05	40.20	40.35	26
27	40.50	40.65	40.80	40.95	41.10	41.25	41.40	41.55	41.70	41.85	27
28	42.00	42.15	42.30	42.45	42.60	42.75	42.90	43.05	43.20	43.35	28
29	43.50	43.65	43.80	43.95	44.10	44.25	44.40	44.55	44.70	44.85	29
30	45.00	45.15	45.30	45.45	45.60	45.75	45.90	46.05	46.20	46.35	30
31	46.50	46.65	46.80	46.95	47.10	47.25	47.40	47.55	47.70	47.85	31
32	48.00	48.15	48.30	48.45	48.60	48.75	48.90	49.05	49.20	49.35	32
33	49.50	49.65	49.80	49.95	50.10	50.25	50.40	50.55	50.70	50.85	33
34	51.00	51.15	51.30	51.45	51.60	51.75	51.90	52.05	52.20	52.35	34
35	52.50	52.65	52.80	52.95	53.10	53.25	53.40	53.55	53.70	53.85	35
36	54.00	54.15	54.30	54.45	54.60	54.75	54.90	55.05	55.20	55.35	36
37	55.50	55.65	55.80	55.95	56.10	56.25	56.40	56.55	56.70	56.85	37
38	57.00	57.15	57.30	57.45	57.60	57.75	57.90	58.05	58.20	58.35	38
39	58.50	58.65	58.80	58.95	59.10	59.25	59.40	59.55	59.70	59.85	39
40	60.00	60.15	60.30	60.45	60.60	60.75	60.90	61.05	61.20	61.35	40
41	61.50	61.65	61.80	61.95	62.10	62.25	62.40	62.55	62.70	62.85	41
42	63.00	63.15	63.30	63.45	63.60	63.75	63.90	64.05	64.20	64.35	42
43	64.50	64.65	64.80	64.95	65.10	65.25	65.40	65.55	65.70	65.85	43
44	66.00	66.15	66.30	66.45	66.60	66.75	66.90	67.05	67.20	67.35	44
45	67.50	67.65	67.80	67.95	68.10	68.25	68.40	68.55	68.70	68.85	45
46	69.00	69.15	69.30	69.45	69.60	69.75	69.90	70.05	70.20	70.35	46
47	70.50	70.65	70.80	70.95	71.10	71.25	71.40	71.55	71.70	71.85	47
48	72.00	72.15	72.30	72.45	72.60	72.75	72.90	73.05	73.20	73.35	48
49	73.50	73.65	73.80	73.95	74.10	74.25	74.40	74.55	74.70	74.85	49
50	75.00	75.15	75.30	75.45	75.60	75.75	75.90	76.05	76.20	76.35	50

T146N - R26W 5th Mer.

Original G.L.O. Survey by - B.C. Baldwin

June 8 - 24 - 1876.

Var. 10° 30'

Legend

- ◆ G.L.O. Corner positively identified
- ◇ Probable G.L.O. Corner.
- F.S. Corner
- ⊙ COUNTY CORNER

Legend for type Map

- 0 Grassland
- 01 Wild pasture
- 02 Hay Meadow
- 1 Brush
- 1s Swampbrush
- 2 Muskeg
- 3 Birch
- 4 Cedar
- 5 Jack Pine
- 6 White spruce
- 7 Black "
- 7 Tamarack.
- 8 Norway Pine
- 9 White Pine
- A Aspett
- B Balsam
- C Cultivated
- c, Impoverished Field
- M Mixed Hard wood
- L Maple
- K Oak
- R Ash
- Swamp
- 7bx Non-productive stagnated
- W Water
- λ seed trees

- a Reproduction - up to 6'
- b Saplings - 6' in height to 4.5" D.b.h.
- c. Poles - 4.5" D.b.h. to 9.5" D.b.h.
- Capitals - Sawtimber over 9.5" D.b.h.

- = Improved Roads
- = Woods Road
- Stream (showing direction)
- Body of water
- ~ Pronounced Ridge

Notes

Chains

Chains

Type & Cultural Map

Remarks:

1.

Original G.L.O. Corners

Cor. Spec. D.b.h. Beam DIST.

243/
116

Aspen

4"

N59°W

.40

36
1

Tamm

4"

S26°W

.77

cedar

6"

S99°E

.58

35136

cedar

4"

N13°E

.23

211

cedar

10"

N66°W

.73

211

211

1112

1

12

W.Pine

5"

N30°E

.20

116

Tamm

5"

S50°E

.48

1217

cedar

5"

S90°W

.46

cedar

5"

N91°W

.17

1/6

Tamm

8"

N63°W

.24

M.C. 1,

Tamm

6"

S75°E

.11

M.C. 2,

Aspen

6"

N89°W

13.68

Aspen

14"

N87°E

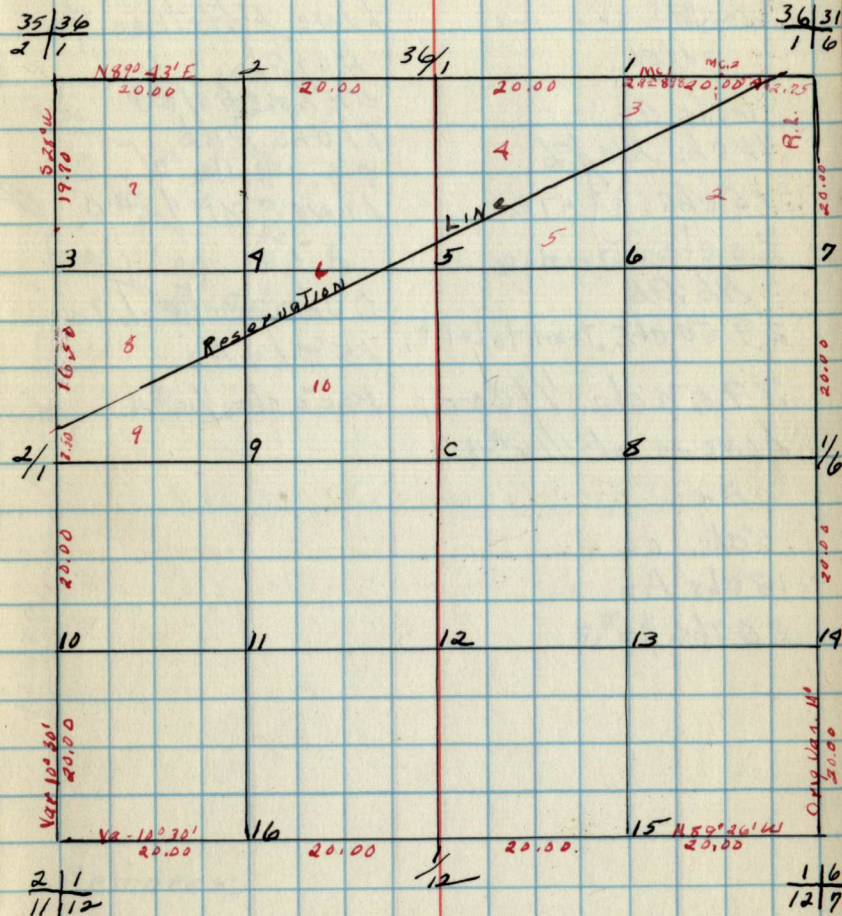
2.95

S33°E

2.20

B.T.'s Found and W.T.'s Set

Cor. Spec. D.b.h. Beam DIST. B.T. W.T.

Sec. 1 T146N-R26W
by-B.T.'s & W.T.'s (CONT.)

Cor. Spec. D.b.h. Beam DIST. B.T. W.T.

211
1112

1/2

116
1217

NOTES

Chains

Line S. of sec. 2-3

Ac/Bb

6 chs. O₂

10 chs. Ab/Bb

15 chs. + H. 472

20 chs. Bridge

Ab Bb

29.50 chs. trail to lot #1

39.50 chs. 1/4 cor.

Line W. of 1/16 #4

Aa

5 chs. O₂

13 chs. Ab

20 chs. 1/16 #3

Chains

Line E. of Sec. 2/35

Ac/Bb

5 chs. 462/Bb

17 chs. Ac/Bb

20 chs. 1/16 #2

Line S. of 1/16 #2

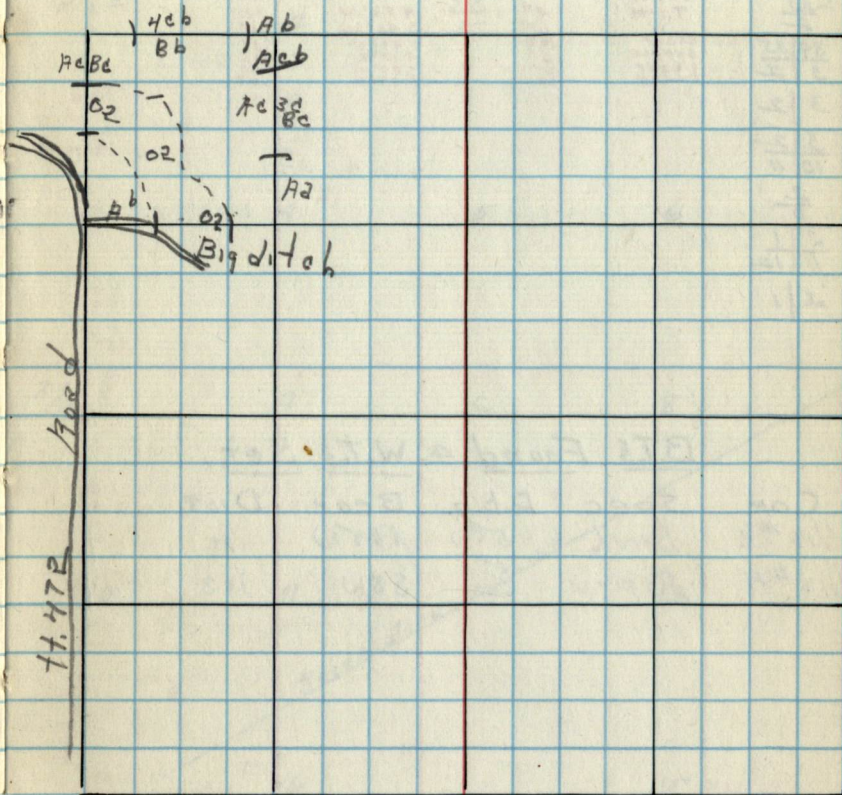
Aa

4 chs. Ba/Bb/Aa

15 chs. Aa

19.50 chs. 1/16 #4

Type & Cultural Map



REMARKS:

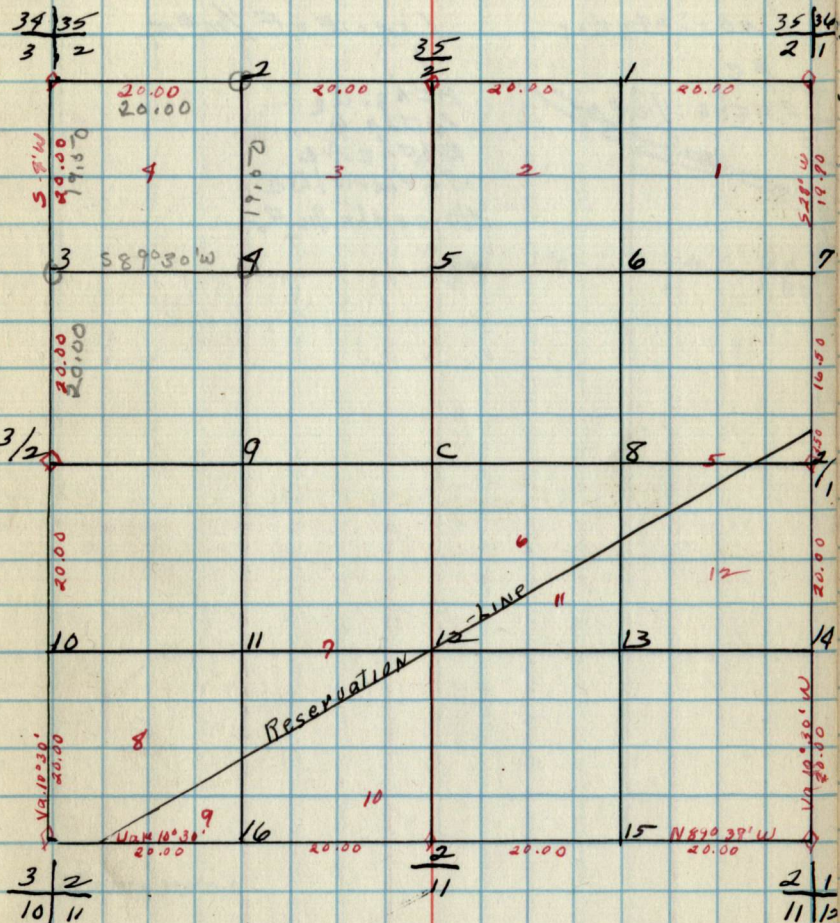
Original G.L.O. Corners

Cor.	Spec.	D.b.h.	Bear.	Dist.
35 36	Cedar	6"	S 77° E	.38
2 1	Balsam	8"	N 15° E	.43
35	Cedar	10"	N 60° W	.58
2	Cedar	12"	S 33° W	.62
39 35	Tam.	4"	N 56° W	.20
3 2		6"	S 90° W	.19
10 11	Cedar	10"	S 47° E	.89
2	Spruce	6"	N 12° W	2.00
3 2	Cedar	6"	S 89° W	2.00
11 12	Cedar	12"	N 33° E	.64

3 2	2
10 11	11
2	11
2 1	11 12
2 1	2 1

B.T.s Found & W.T.s Set.

Cor.	Spec.	D.b.h.	Bear.	Dist.	
1/16 #2	Birch	115"	N 65° W	19	wt
1/16 #4	Aspen	5	S 8° W	103	wt



B.T.s & W.T.s (CONT)

Cor.	Spec.	D.b.h.	Bear.	Dist.	B.T. W.T.
------	-------	--------	-------	-------	-----------

Notes

Chains

Line 5 of 14 Cor.

Ac

20 chs. 1/16 #5

Chains

Line E of F 1/16 #5

1

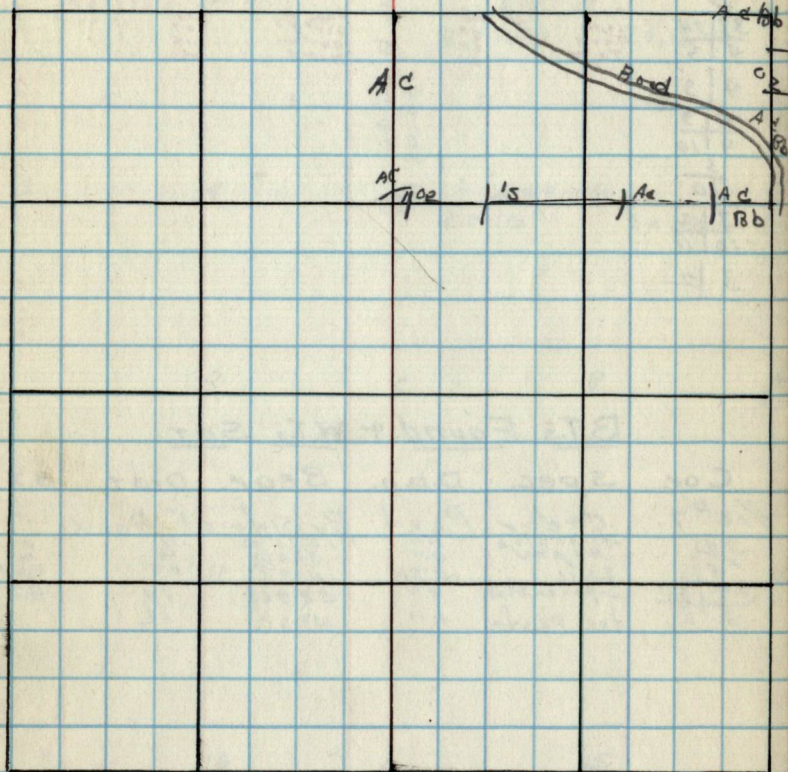
2 chs. G2

10 chs. Is

24 chs. Ac

36 chs. Ad/Bc

40.20 chs. 1/16 #7

Type 9 Cultural Map

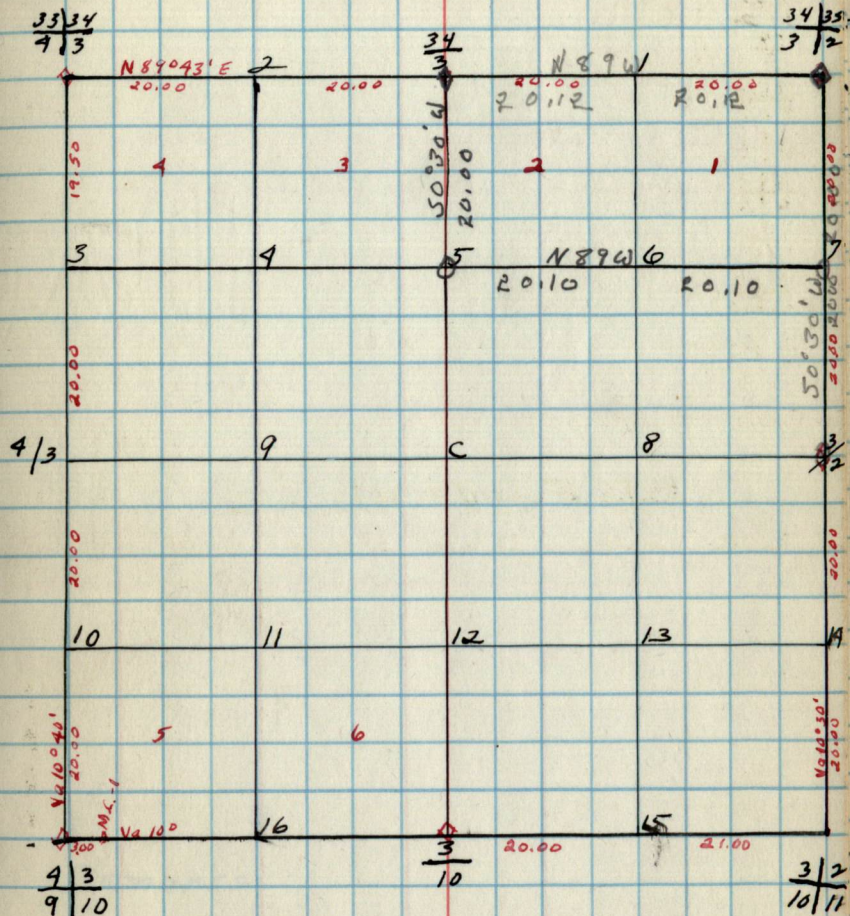
Remarks:

Original G.L.O. Corners

Cor.	Spec.	D.b.h.	Bear.	DIST.
34/35	Cedar	10	N33°E	
31/2	Spruce	10	N33°E	
34	Cedar	10	N33°E	
3	B. of Gilead	3"	S37°E	.64
	Aspen	3"	N20°E	.59
33/34	Ta 777	4"	S22°W	.55
4/3	Ta 777	4"	S19°E	.57
4/3	Ta 777	3"	N6°W	.18
9/10	Ta 777	6"	N12°E	.90
3				
3/2				
10/11				
3/2				

B.T.'s Found & W.T.'s Set

Cor.	Spec.	D.b.h.	Bear.	DIST.	B.T.	W.T.
1/16/27	Cedar	Post	By side of Road			
34	Sp. stub	4"	S16°W	76	B.T.	
3	Aspen	3"	S60°W	20	604	
34/35	Sp. stub	2"	N19°E	27		B.T.
3/2	Loc. post	4"	S34°W	74		
			West.	12		

Sec 3 T146N-R26W
by-

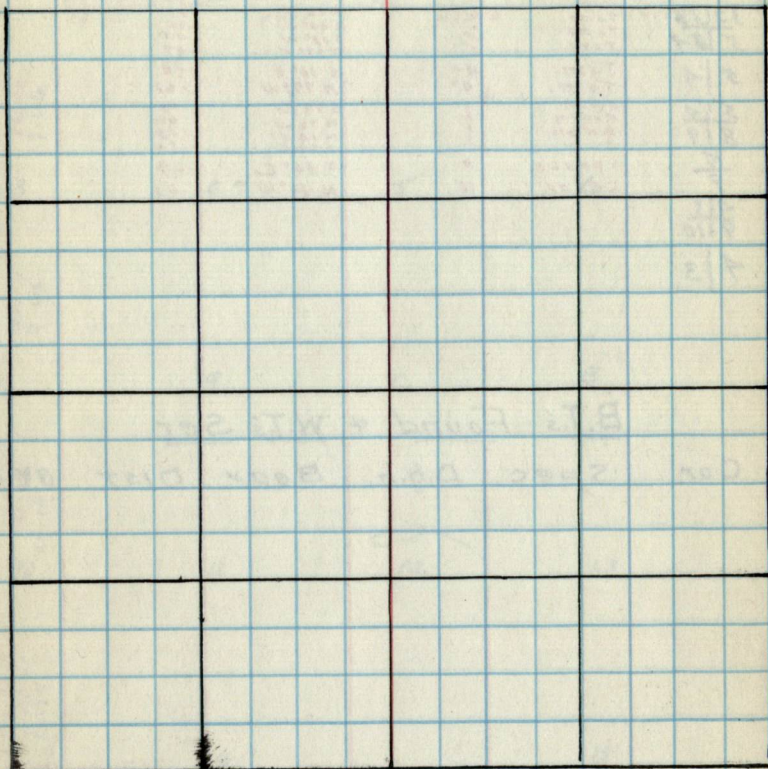
B.T.'s & W.T.'s (CONT.)

Cor.	Spec.	D.b.h.	Bear.	DIST.	B.T.	W.T.
------	-------	--------	-------	-------	------	------

Notes

Chains

Chains

Type & Cultural Map

Remarks:

4.

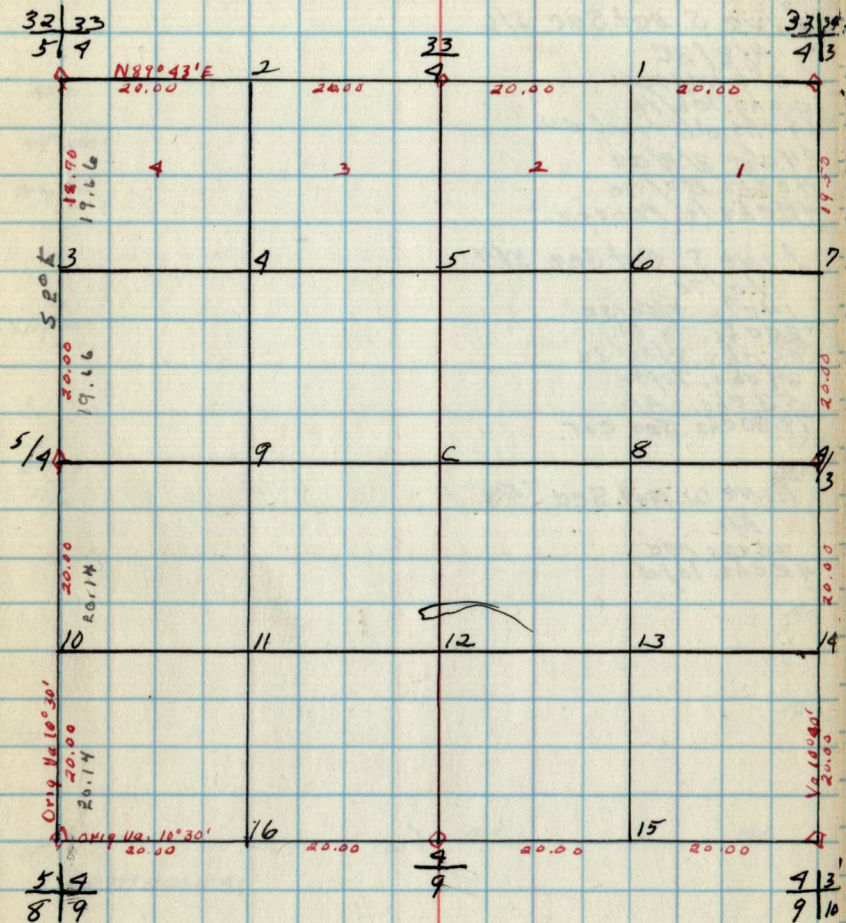
Original G.L.O. CORNERS

Com.	Spec.	D.b.h.	Beam.	DIST.
33/32	Tamm.	4"	S 24° W	.55
4/3	Tamm.	4"	S 18° E	.27
32	Tamm.	6"	N 10° W	.18
4	Tamm.	6"	N 37° E	.49
32/33	Tamm.	6"	S 48° W	.10
5/4	Tamm.	3"	N 12 1/2° W	.82
5/4	Tamm.	6"	N 80° E	.29
8/9	Tamm.	6"	S 42° E	.40
5/4	Tamm.	5"	S 22° W	.42
5/4	Tamm.	4"	N 22° W	.28
5/4	Tamm.	4"	S 10° E	.61
8/9	Aspen	3"	N 77° W	.53
8/9	Aspen	3"	S 72° W	.62
9/10	B. of G. h.	3"	N 78° W	.23
9/10	B. of G. h.	3"	N 22° E	.34
7/3	SpMUce	6"	S 30° E	.27
7/3	cedar	10"	N 44° W	.03

B.T.'s Found & W.T.'s Set.

Com. Spec. D.b.h. Beam. DIST. B.T. W.T.

4.

Sec. 4 T146N-R26W-
by-

B.T.'s & W.T.'s (CONT.)

Com. Spec. D.b.h. Beam. DIST. B.T. W.T.

5.

Notes

Chains

Chains

Line S. Bet. Sec. 5/6

A/8/30
 6 chs 40/70/A
 10 chs 70/70
 19 chs. old track E.W.
 24 chs 8/A/30
 40 chs. B0/70
 42 chs/s Fodge

Line S. Bet. Sec. 5/4

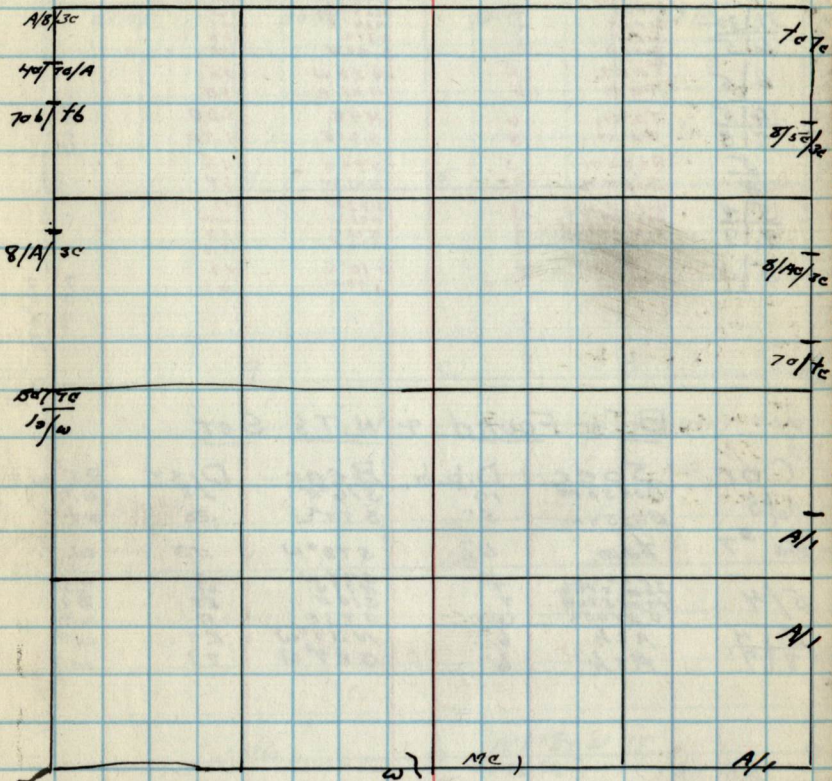
70/70
 14 chs. 8/54/30
 20 chs. 70
 24 chs 8/A/30
 34 chs. 70/70
 53 chs. A/1
 79.80 chs. Sea. cor.

Line W. Bet. Sec. 5/8

A/1
 32 chs. Mc
 42 chs. 13/w

5.

Type & Cultural Map



Remarks:

Original G.L.O. Corners

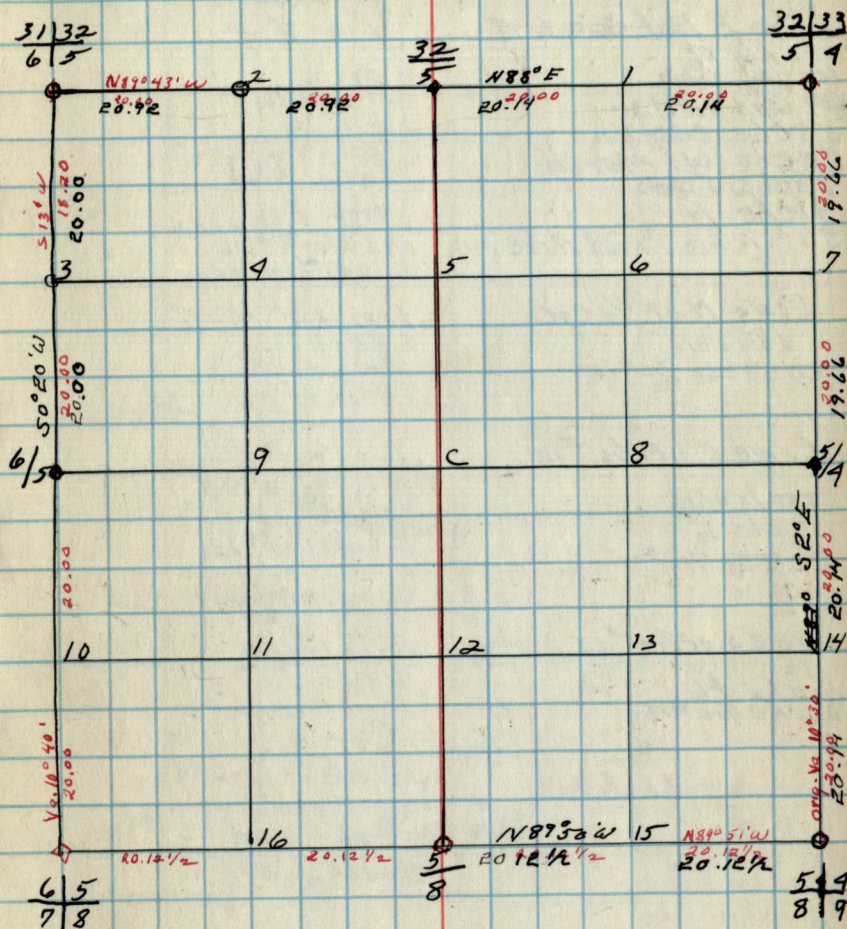
Com	Spec.	D.b.h.	Beam	DIST.
32/33	Tam.	4	N 80° E	.29
5/4	Tam.	5	S 42° E	.42
32	Tam.	5	S 18° W	.29
5	Tam.	5	N 77° W	.29
31/32	Tam.	5	N 60° W	.18
6/5	Tam.	5	S 16° E	.25
6/5	Birch	5	N 65° W	.45
7/8	Birch	8	N 54° E	.37
5	Birch	5	S 31° E	.34
8/9	Birch	5	S 49° W	.30
5/4	Tam.	5	N 20° W	.25
7/8	Tam.	5	N 45° E	.30
5	Tam.	6	N 4° E	5.00
8	Tam.	8	S 3° E	4.90
5/4	Aspen	5	S 79° E	.25
8/9	Aspen	5	N 41° W	.38
5/4	Aspen	5	S 72° W	.33
8/9	B. b. lead	5	N 78° W	.62
5/4	" "	5	N 10° E	.23
5/4	" "	5	S 22° E	.34
5/4	Tam.	4	S 10° E	.28
5/4	Tam.	4	N 17° W	.61

B.T.'s Found & W.T.'s Set

Cor	Spec.	D.b.h.	Beam	DIST.	B.T.	W.T.
6/5	Balsom	10"	S 16° E	.18	w.t.	w.t.
1/6 #7	Balsom	5"	S 55° W	.20	w.t.	w.t.
5/4	Tam.	6"	S 78° W	.13	w.t.	w.t.
5/4	Spruce	4"	S 78° W	.13	w.t.	w.t.
5/4	Tam.	4"	S 16° E	.28	w.t.	w.t.
5/4	Spruce	6"	S 83° E	.18	w.t.	w.t.
8/9	Ash	6"	N 34° W	.24	w.t.	w.t.
8/9	Ash	6"	S 24° W	.29	w.t.	w.t.

B.T.'s & W.T.'s (CONT.)

COM.	Spec.	D.b.h.	Beam	DIST.	B.T.	W.T.
------	-------	--------	------	-------	------	------

Sec. 5 T146N-R26W
by-

NOTES

Chains

LINE E. Bet. Sec. 6-7

76/76
 40chs. 30/90
 49chs 850/30
 53chs. 830/1100
 78chs W. Marsh
 78chs 50/80
 81chs 15
 86.47chs First River

LINE N. of S/4 Cor.

880/500
 20.00chs 1/16 #12

LINE E. of 1/16 #12

800/50/36
 17chs 15
 20chs 1/16 #13

Lines S. of 1/16 #13

15
 10chs 1/6
 20chs 1/16 #15

LINE N. Bet Lots 6-7

800/96
 40chs 80
 7.50chs Road
 16chs. Lake

Chains

LINE E. of W. 1/4 cor.

Ac
 2chs 800/96
 13chs 50
 20chs 80
 30chs Road
 37chs Flowage
 40chs 90/36
 51.95chs 0/400

LINE N. of C/4 cor.

800/36
 11chs Ab/36
 11chs Lake

LINE S. of C/4 cor.

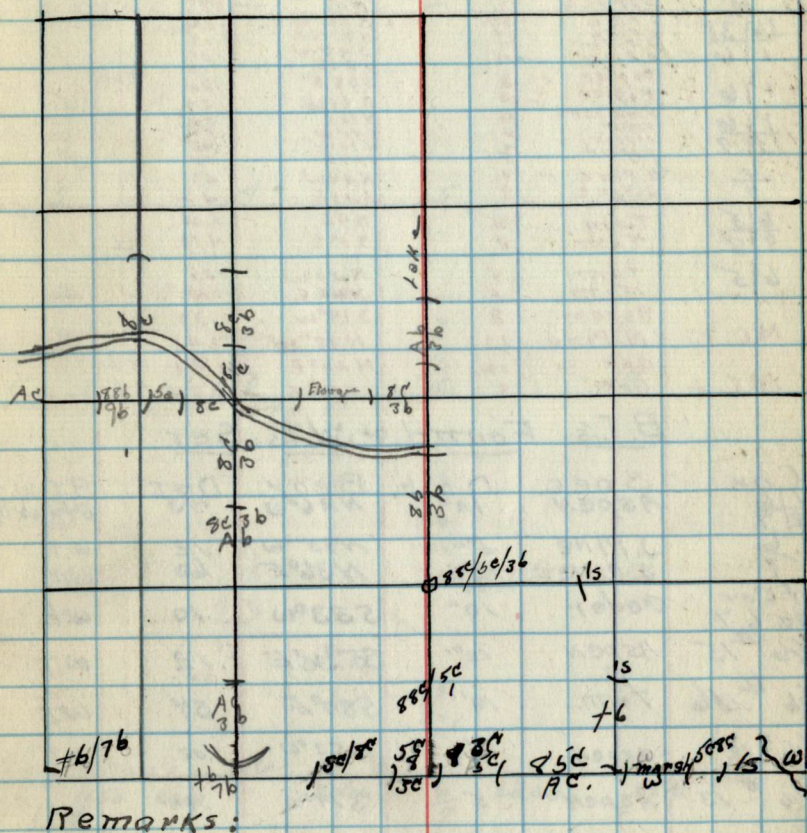
4.70chs. Road
 800/36
 20chs 1/16 #12

LINE N. of 1/16 #9

40
 60chs. 90/36
 11chs. Lake

LINE S. of 1/16 #9

80
 1.25chs Road
 12chs. 80/36/Ab
 50chs. Ac/36
 38chs. 1/6/76
 40chs. 1/16 #16

Type & Cultural MAP

6.

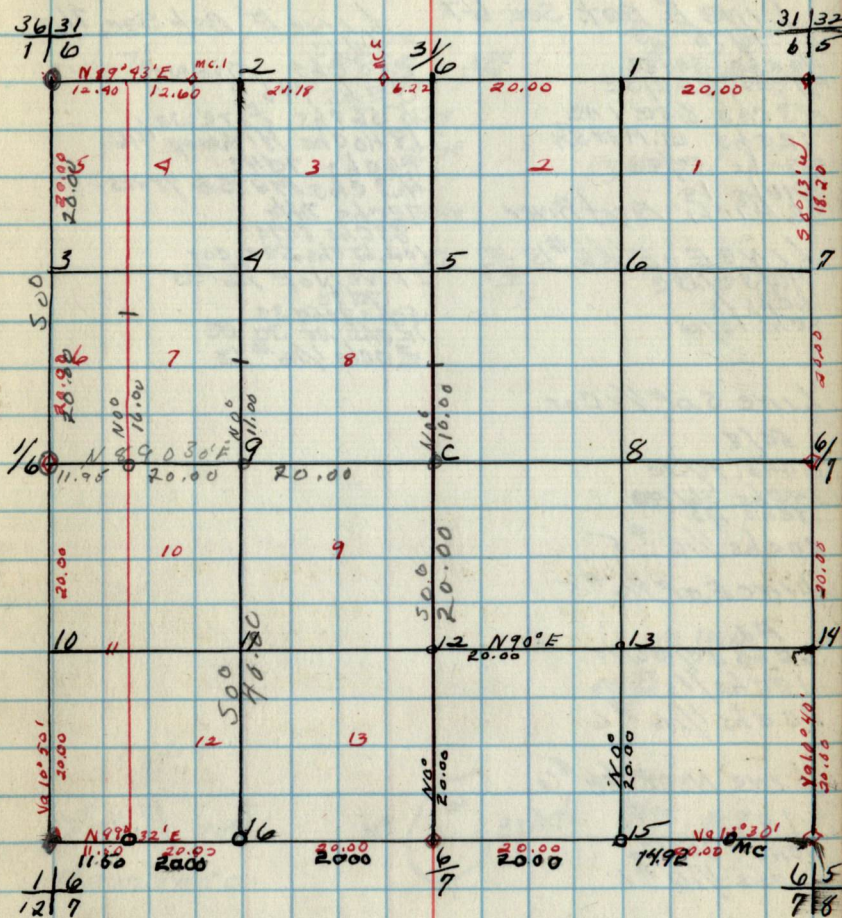
Original G.L.O. Corners

Com.	Spec.	D.b.h.	BEAM.	DIST.
31/32	Birch.	4"	N 52° W	.53
6/5	Birch.	4"	N 34° E	.37
	Birch.	4"	S 31° E	.37
	Birch.	4"	S 44° W	.30
31/6	Balsam spruce	3"	S 49° W	.30
		8"	N 0°	.89
36/31	J. PINE	10"	N 58° W	.22
1/6	J. PINE	14"	N 43 1/2° E	.13
	J. PINE	11"	S 49° W	.07
	J. PINE	10"	S 32° E	.14
1/6	Poplar	6"	S 63° E	.26
	Poplar	6"	S 55° W	.27
1/6	Pine stub	48"	N 70° E	.22
12/7	Poplar	16"	S 45° W	.59
	Poplar	16"	N 30° W	.95
6/7	Poplar	4"	S 37° E	.35
6/5	J. Pine	9"	N 24° W	.43
7/8	J. PINE	9"	S 28° E	.42
6/5	TAMM.	6"	N 4° E	5.00
7/8	TAMM.	8"	S 3° E	4.10
6/5	TAMM.	5"	N 20° W	.25
	TAMM.	5"	N 45° E	.30
M.C. 1	Aspen	8"	S 19° W	.39
	N. PINE	12"	N 38° W	1.90
M.C. 2	Oak	12"	N 20° E	1.44
	OAK	8"	S 30° E	1.97

B.T.'s Found & W.T.'s SET.

Com.	Spec.	D.b.h.	Beam	DIST.	B.T. W.T.
1/6	ASPEN	12"	N 26° W	.43	B.T. & W.T.
12/7	J. PINE	5"	N 85° W	12	w.t.
1/4	J. PINE	12"	N 36° E	60	w.t.
Lot Cor. Sec. 67	Cedar	10"	S 33° W	10	w.t.
1/16 #15	ASPEN	10"	S 53° E	12	w.t.
1/16 #16	TAMM.	10"	S 80° E	34	w.t.
1/16 #12	ASPEN	6"	S 53° W	.02	w.t.
1/16 #13	ASPEN	5"	S 14° W	.44	w.t.
C/4	R. PINE	5"	N 61° E	12	w.t.
1/16 #9	R. PINE	6"	N 34° E	18	w.t.
Lot Cor. 67-10-11	W. PINE	3'	S 22° E	11	w.t.

6.

Sec 6 T146N-R26W.
by-Haberle

B.T.'s & W.T.'s (CONT.)

Com.	Spec.	D.b.h.	Beam	DIST.	B.T. W.T.
------	-------	--------	------	-------	-----------

Notes

Chains

LINE E. Bet. Sec. 6-7

40 chs 3c/8c
 49 chs 85c/3c
 53 chs 8/3c. 1 AC
 72 chs W. Marsh
 78 chs 5c/8c
 81 chs 15
 86 47 chs First River

LINE E. OF 1/16 #13

40/3c/3c
 6 chs 15
 80 chs 15/10

LINE S. OF 1/4 Cor.

5c/8
 6 chs. 94/3c
 14 chs 56/100
 18 chs #3
 20 chs 1/16 #5

LINE E. OF 1/16 #5

Aa
 6 chs 3c/36/15
 18 chs 15
 20 chs 1/16 #6

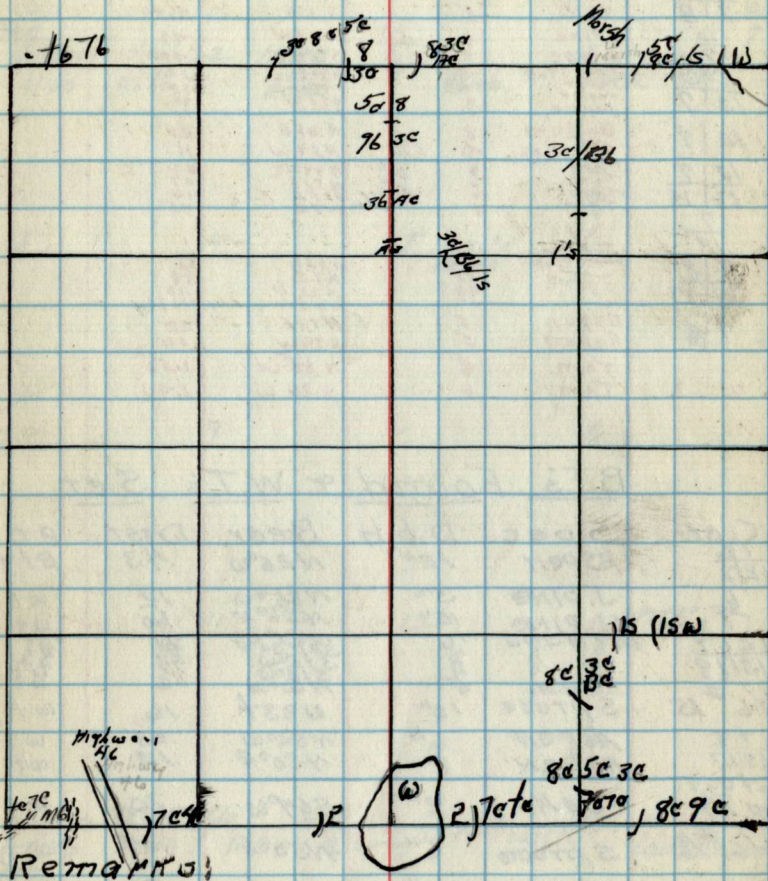
LINE N OF 1/16 #6

15
 4 chs. 3c/36
 20 chs. 1/16 #1.

Chains

LINE E. Bet. Sec. 7/18

7c/7c
 2.85 chs Fire way
 5 chs M6
 556 chs Fireway
 1840 chs Highway 146
 26 chs 7c/4c
 43 chs Marsh grass
 72 chs 7c/4c
 83 chs 8c/9c
 102.67 chs Sec. cor
 LINE N OF 1/16 #15
 7c/7c
 5 chs 8c/8c 3c
 12 chs AC 30 100
 20 chs 1/16 #13

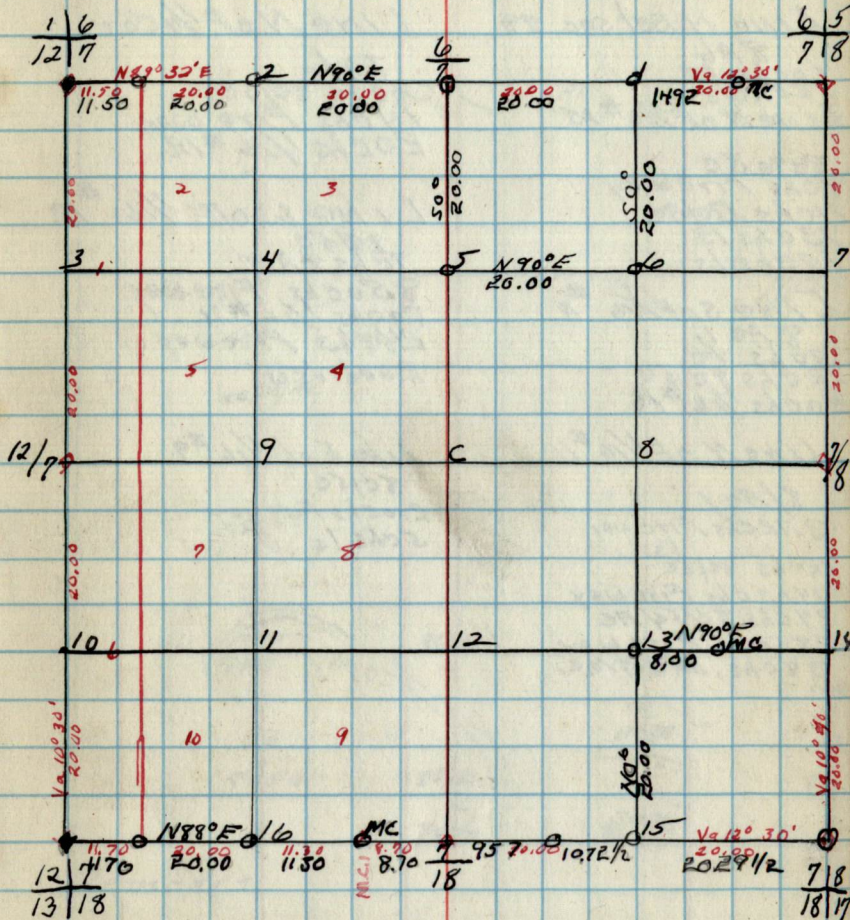
Type & Cultural Map

Original G.L.O. Corners

COM	Spec.	D.b.h.	Bear.	DIST.
6 1/8	Tam	4	N 4 E	5.00
7 1/8	Tam	3	S 3 E	4.90
6	J. Pine	9	N 24 W	.73
7	J. Pine	9	S 28 E	.72
1 1/6	pine stub	18	N 70 E	.52
12 1/7	Poplar	10	S 45 W	.32
	Poplar	3	N 30 W	.45
	Poplar	3	S 25 E	.25
12 1/7	Balsam	8	N 61 E	.20
	Balsam	4	N 54 W	.11
12 1/7	Tam.	6	N 44 W	.62
13 1/8	Tam.	6	N 52 E	.07
	Tam.	6	S 25 E	.16
	Tam.	6	S 12 E	.22
7	X pine stub	24	S 33 E	.33
7 1/8	" "	28	N 7 E	.39
18 1/7	" "	30	N 32 W	.13
	" "	34	S 26 W	2.47
7 1/8	Aspen	5	N 77 E	.20
	Aspen	5	N 79 W	.06
W.C. 1	Tam.	8	N 88 W	1.50
	Tam.	6	S 86 W	1.40

B.T.'s Found & W.T.'s Set.

Cor.	Spec.	D.b.h.	Bear.	DIST.	B.T. W.T.
12 1/7	ASPEN	12"	N 26 W	.43	B.T. W.T.
6	J. PINE	5"	N 85 W	12	wt
12 1/7	J. PINE	12"	N 36 E	60	wt
13 1/8	Tam stub	4	N 54 E	.27	B.T.
	" "	4	S 70 W	.23	wt
	" "	5	S 75 W	.16	wt
1 1/6 # 15	SPRUCE	10"	west	16	wt
7 1/8	ASPEN	6"	N 82 W	.03	wt
18 1/7	ASPEN	8"	N 30 E	12	wt
Lot Coy Sec 19	OAK	8"	S 64 W	.30	wt.
1 1/6 # 16	SPRUCE	6"	N 50 E	.08	wt.
W.C. 1	Tam.	2"	S 50 W	.26	wt.
1 1/6 # 1	ASPEN	10"	S 53 W	.72	wt
1 1/6 # 2	Tam.	10"	S 80 E	.34	wt.
Lot Coy Sec. 6 1/7	Cedar	10"	S 33 W	10"	wt
1 1/6 # 13	ASPEN	12"	S 10 W	17	wt.

Sec. 7 T146N-R26W
by-Haberle

B.T.'s & W.T.'s (CONT.)

Cor.	Spec.	D.b.h.	Bear.	DIST.	B.T. W.T.
1 1/6 # 5	OAK	4"	N 35 E	.34	wt.
1 1/6 # 6	OAK	14	N 73 W	1.09	wt.

NOTES

Chains

LINE N. Bet sec. 89
8 Ab
10chs 1s
12chs 1s W

LINE N OF 1/16 #15

8090 3c
8chs Fireway
11chs 30/3c
13chs 1s
18chs 1s W

LINE S OF 1/16 #11

8 AC 1
80chs 1/2
12chs 90 5c
20chs 1/16 #16

LINE N OF 1/16 #11

8/AC 1
3.72chs Fireway
1s
12chs 80/5c
14.03chs Fireway
24chs 80/54/AC
28.50chs Fireway
38chs. 2450ft M.G.

Chains

LINE N OF 1/4 cor

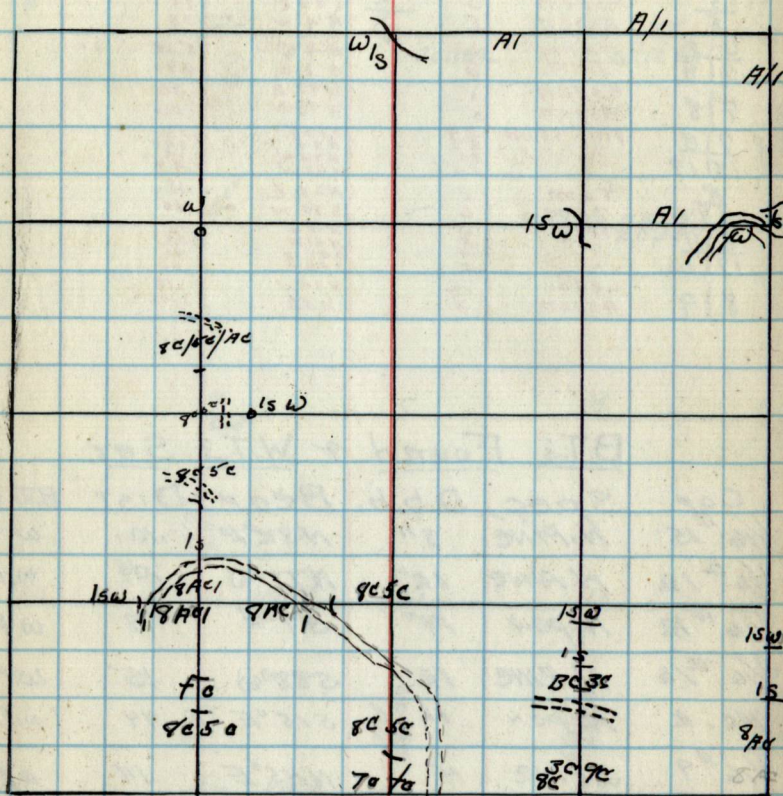
70ft
40chs 80/5c
14chs Fireway
20chs 1/16 #12

LINE W OF 1/16 #12

80/5c
7chs 8 AC 1
8.50chs Fireway
20chs 1/16 #11
24chs Fireway
20ch 1s W

LINE E OF 1/16 #9

80/5c
210chs Fireway
5chs 1s

Type & Cultural Map

REMARKS:

Original G.L.O. Corners

COM	Spec.	D.b.h.	BEAM	DIST.
514	Aspen	3 1/2	S72W	.52
819	Aspen	3 1/2	N75W	.42
5	O. SPGIL	3 1/2	N12E	.43
5	Aspen	5	S79E	.25
5	Aspen	5	N41W	.38
6 1/2	Tam.	6	N4E	5.00
7 1/8	Tam.	8	S3E	4.30
7 1/8	Aspen	5	N77E	.20
7 1/8	Aspen	5	N79W	.06
7 1/8	Pine stub	3	S53E	.33
1817	"	2 1/2	N7E	.13
8	"	2 1/2	N32W	2.97
8	"	2 1/2	S82W	.11
8	Tam.	5	N85E	.11
17	Tam.	6	S80W	.45
819	Aspen	5	N15E	.13
1716	"	5	N41W	.28
819	"	5	S65W	.45
819	"	5	S6E	.40
819	cedar	12	S77W	.18
819	Aspen	3	N5E	1.95

B.T.'s Found & W.T.'s Set

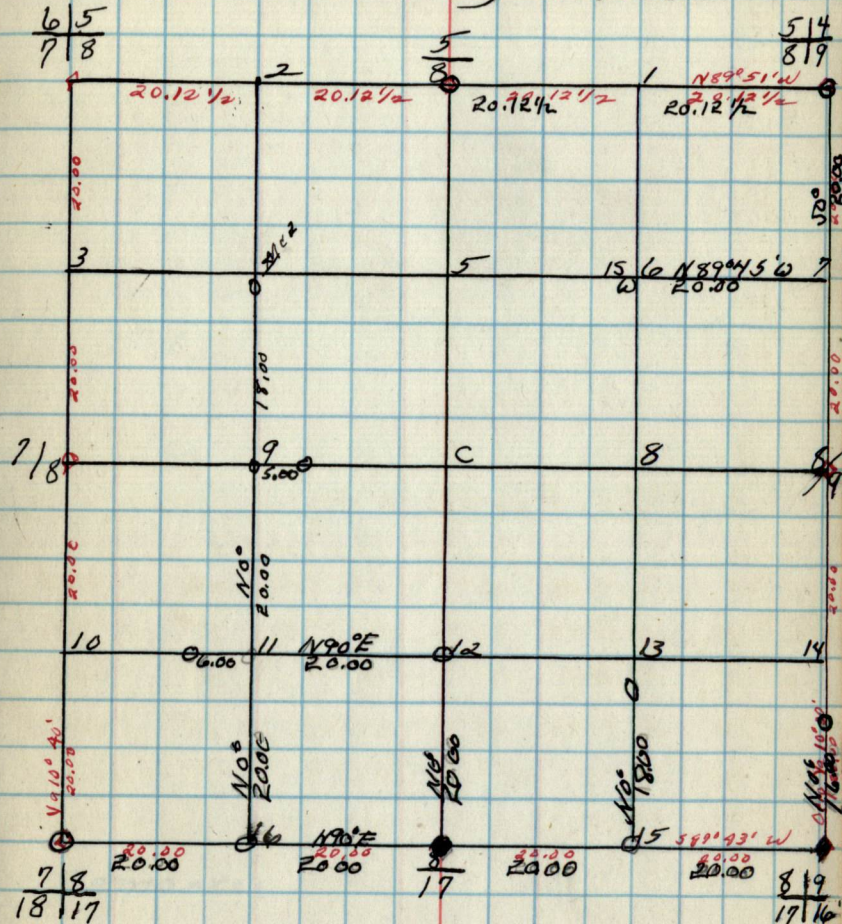
COM.	Spec.	D.b.h.	BEAM	DIST.	B.T. W.T.
1/16 #15	N. PINE	8"	N32°E	.10	w.t.
1/16 #12	N. PINE	12"	N77°W	.04	w.t.
1/16 #12	ASPEN	14"	S9°E	.18	w.t.
1/16 #16	N. PINE	12"	S88°W	.15	w.t.
MC. 2	ASPEN	12"	S15°E	.44	w.t.
1/16 #9	J. PINE	4"	N45°E	.14	w.t.

B.T.'s & W.T.'s (CONT.)

COM.	Spec.	D.b.h.	BEAM	DIST.	B.T. W.T.
------	-------	--------	------	-------	-----------

Sec. 8 T146N-R26W

by - Haberle



Notes

Chairs

Chairs

Type & Cultural Map

Remarks:

9.

Original G.L.O. Contents

COM. Spec. D.b.h. BEAR. DIST.

413				
9/10				
4				
579	Spruce	6	S 30 E	.27
819	Cedqr	10	N 44 W	.13
	Aspen	3	S 72 W	.53
	Aspen	3	N 78 W	.02
	B.P. Gil.	3	N 12 E	.23
	" "	3	S 22 E	.34
819	Cedqr	12	S 77 W	.18
819	Aspen	3	N 5 E	1.75
819	Aspen	5	N 15 E	.13
17/16	" "	5	N 41 W	.38
9	" "	5	S 65 W	.75
10	Tam.	4	S 56 E	.60
9/10	Tam.	4	S 8 E	.29
9/10			N 4 E	.90
16/15				
9/10				

B.T.'s Found & W.T.'s Ser.

COM. Spec. D.b.h. BEAR. DIST. B.T. W.T.

819					
17/16					

B.T.'s & W.T.'s (CONT.)

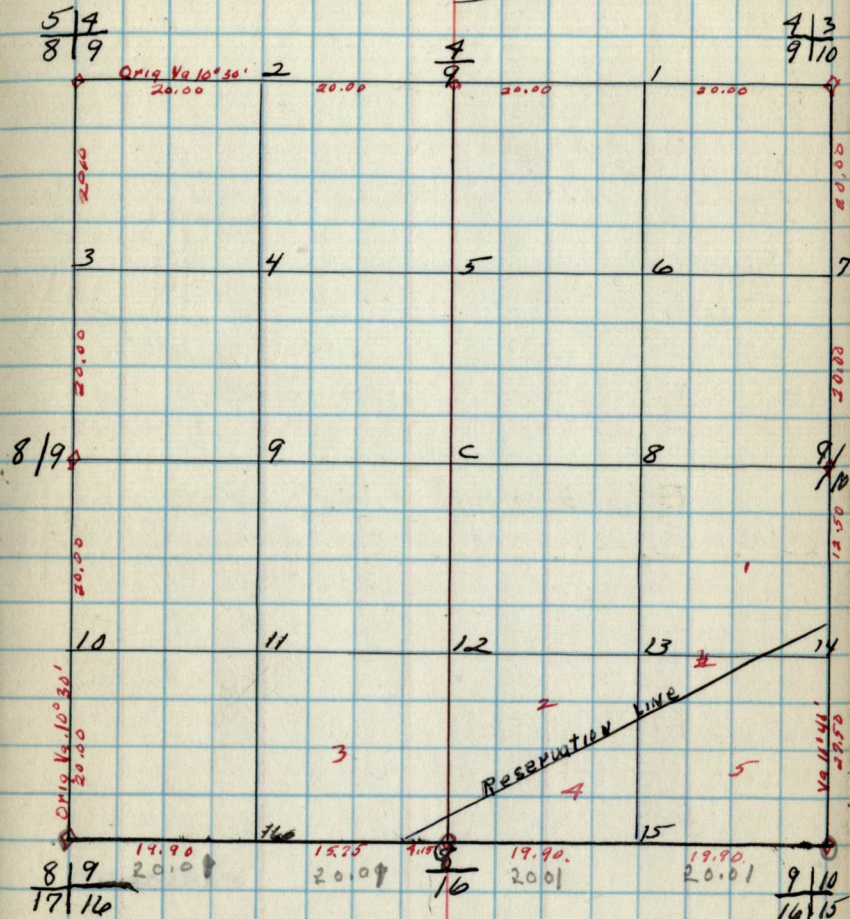
COM. Spec. D.b.h. BEAR. DIST. B.T. W.T.

819					
17/16					
8	19.90				
10	20.07				
16	19.90				
10	20.01				
9/10	19.90				
16/15	20.01				

9.

Sec. 9 T146N-R26W

BY -



819					
17/16					
8	19.90				
10	20.07				
16	19.90				
10	20.01				
9/10	19.90				
16/15	20.01				

Notes

Chairs

Chairs

Type & Cultural Map

REMARKS:

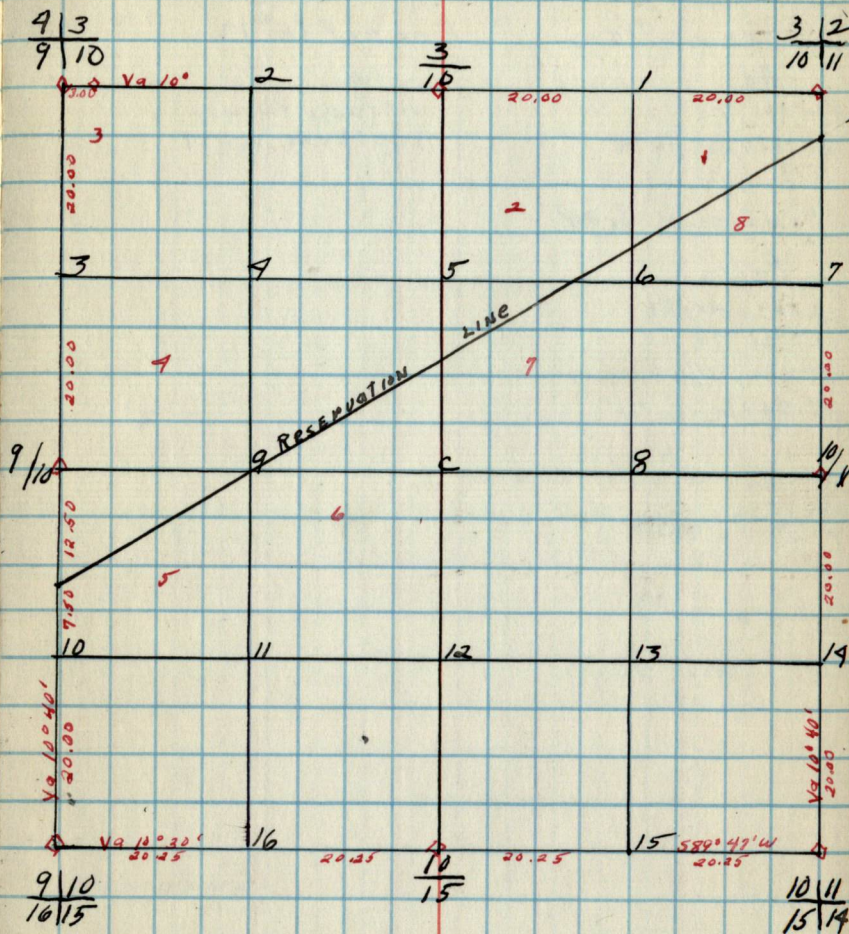
Original G.L.O. Corners
 Spec. D.b.h. Bear. Dist.

Com.
 $\frac{3}{10} \frac{2}{11}$
 $\frac{3}{10}$
 $\frac{3}{9} \frac{3}{10}$
 $\frac{9}{9} \frac{10}{10}$
 $\frac{9}{16} \frac{10}{15}$
 $\frac{10}{15}$
 $\frac{10}{15} \frac{11}{14}$
 $\frac{10}{10} \frac{11}{11}$

B.T.'s Found & W.T.'s Set.

Com. Spec. D.b.h. Bear. Dist. B.T. W.T.

Sec. 10 T146N-R26W
 Dy-



B.T.'s & W.T.'s (CONT.)

Com. Spec. D.b.h. Bear. Dist. B.T. W.T.

NotesChains

Line of F 1/4002.

Ac

15 chs Td

20.31 chs 1/16 #8

Line of F 1/16 #8

Td/15

6 chs. Ac/Bb

13 chs Tc

19 chs. Ac/Bb

19.96 chs 1/16 #13

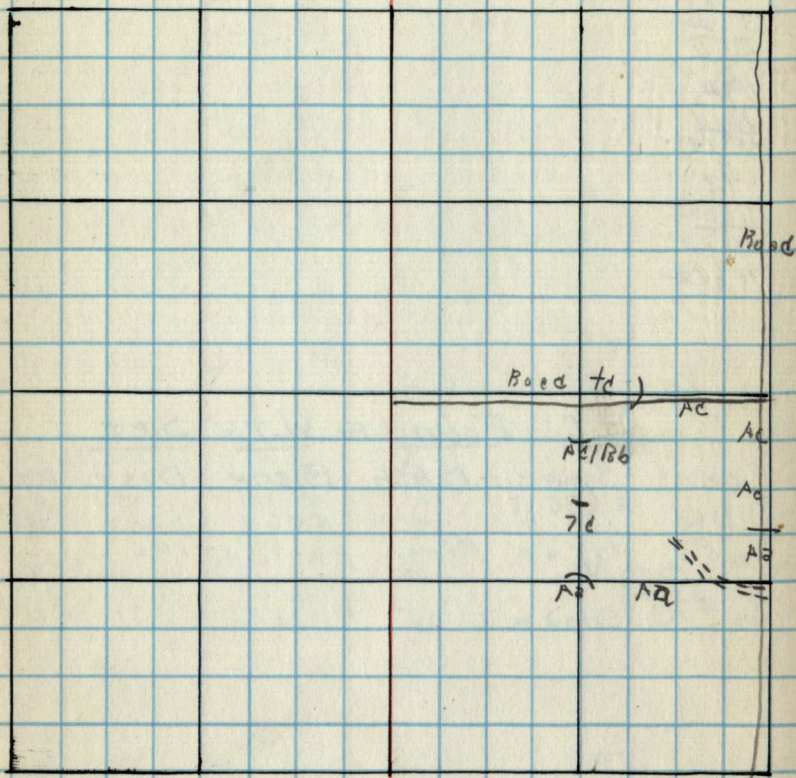
Chains

Line of F 1/16 #13

Ac

10.50 chs Fireway

20.22 chs. 1/16 #14

Type & Cultural Map

REMARKS:

Original G.L.O. Corners

Cor. Spec. D.b.h. BEAM. DIST.

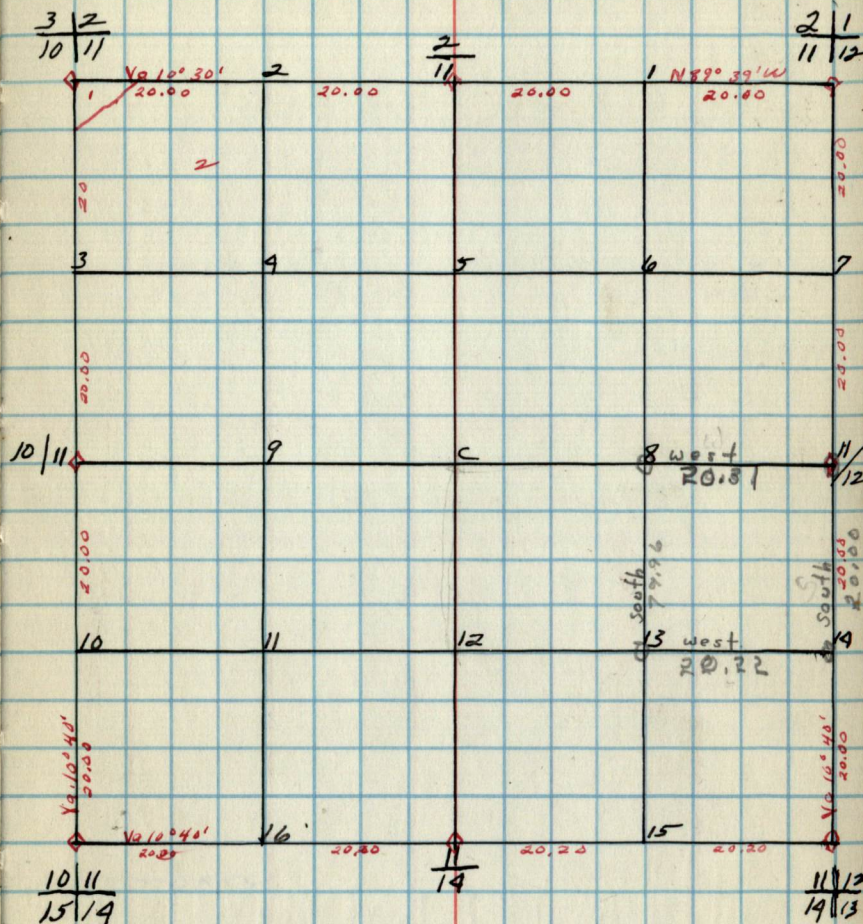
$\frac{2}{11}$
 $\frac{11}{12}$
 $\frac{2}{11}$
 $\frac{3}{10}$
 $\frac{10}{11}$
 $\frac{10}{11}$
 $\frac{15}{14}$
 $\frac{11}{14}$
 $\frac{11}{12}$
 $\frac{19}{13}$
 $\frac{11}{12}$

B.T.'s Found & W.T.'s Set.

Cor.	Spec.	D.b.h.	Beam.	Dist.	B.T. W.T.
$\frac{11}{12}$	P.F.P. Bill	14"	N58W	1.05"	B.T.
$\frac{11}{16}$ #8	tag on fence	14"	S56W	1.40	B.T.
$\frac{11}{16}$ #13	Bolson	12"	N70E	.31	w.t.

Sec 11 T146N-R26W.

by - Haberle

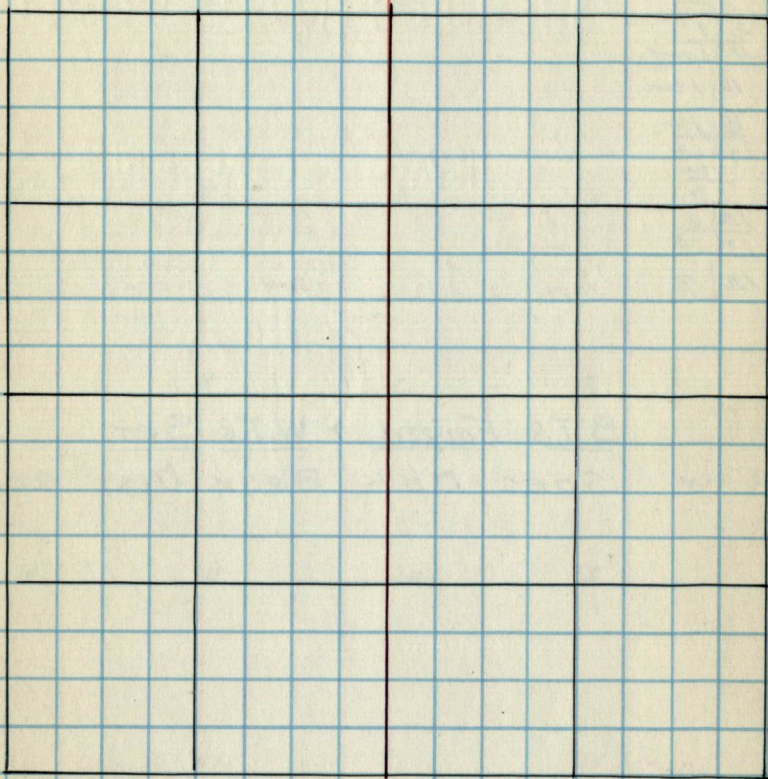
B.T.'s & W.T.'s (CONT.)

Cor. Spec. D.b.h. BEAM. DIST. B.T. W.T.

Notes

Chains

Chains

Type 4 Cultural Map

Remarks:

Original G.L.O. Corners

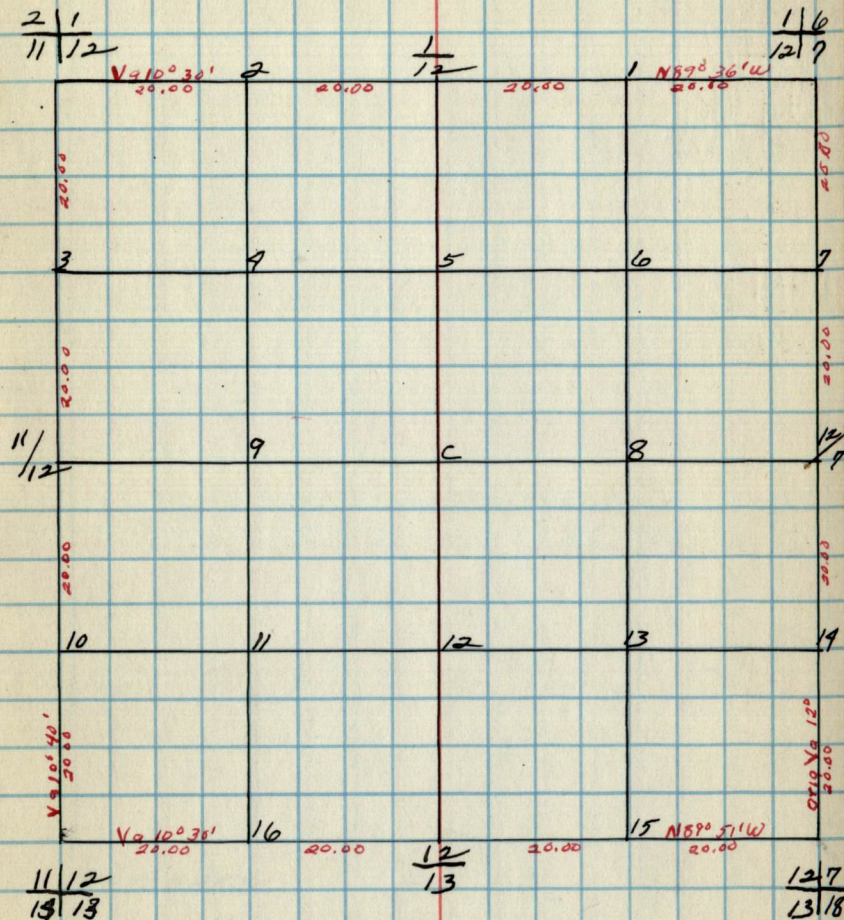
Cor. Spec. D.b.h. Beam. DIST.

11/6	W. Pine	5	N 30 E	1.20
12/7	Tam	5	S 50 E	1.78
1/12	Cedar	5	S 40 W	1.70
2/1	Cedar	5	N 71 W	1.17
11/12				
11/12				
11/12				
11/12				
12/13				
12/13				
12/13				
12/7	Tam stub	5	S 48 W	1.22
13/18	Tam ..	6	S 50 E	1.25
	No other trees			
12/7	Tam.	4	N 80 E	1.22
12/7	Tam.	7	N 33 W	1.82

B.T.'s Found & W.T.'s Set.

Cor. Spec. D.b.h. Beam. DIST. B.T. W.T.

Sec. 12 T146N - R26W.

B.T.'s & W.T.'s (CONT.)

Cor. Spec. D.b.h. Beam. DIST. B.T. W.T.

NOTES

Chains

Chains

Type & Cultural Map

Remarks:

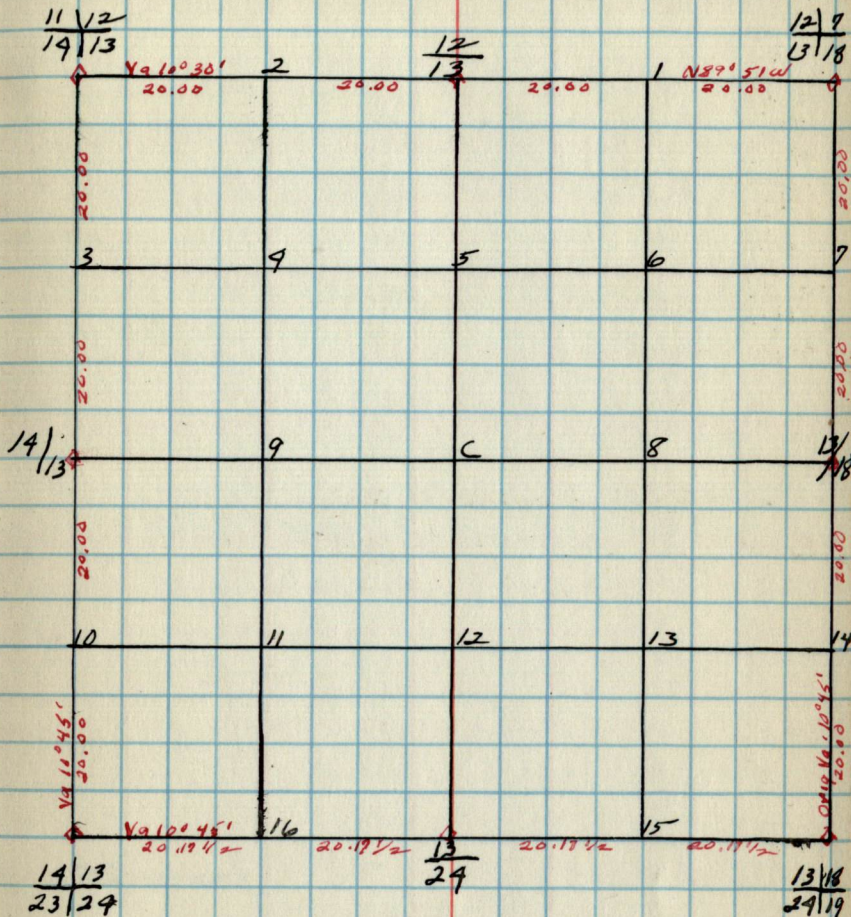
Original G.L.O. Corners

Cor.	Spec.	D.b.h.	Beam.	DIST.
12/17	Tam. stub	5	548 W	.22
13/18	Number tree	6	550 E	.55
12/13				
11/12				
19/13				
14/13				
19/13	Tam.	5	N 53 E	.16
23/24	Tam.	5	S 32 E	.15
13	Tam.	5	S 64 W	.25
24	Tam.	5	N 75 W	.18
13/18	Basswood	10	S 81 W	.114
24/19	D. PINE	20	S 40 E	.93
13/18	D. PINE	10	N 14 E	1.11
24/19	D. PINE	10	N 20 W	1.10
13/18	Birch	5	N 29 E	.19
13/18	White	20	S 38 W	.60

B.T.'s Found + W.T.'s Set.

Cor. Spec. D.b.h. Beam. DIST. B.T.W.T.

Sec. 13 T146N R26W
by -



B.T.'s + W.T.'s (CONT.)

Cor. Spec. D.b.h. Beam. DIST. B.T.W.T.

12.11
Chains

Notes

Chains

Type & Cultural Map

REMARKS:

14.

Original G.L.O. Corners

Cor. Spec. D.b.h. Bear. Dist.

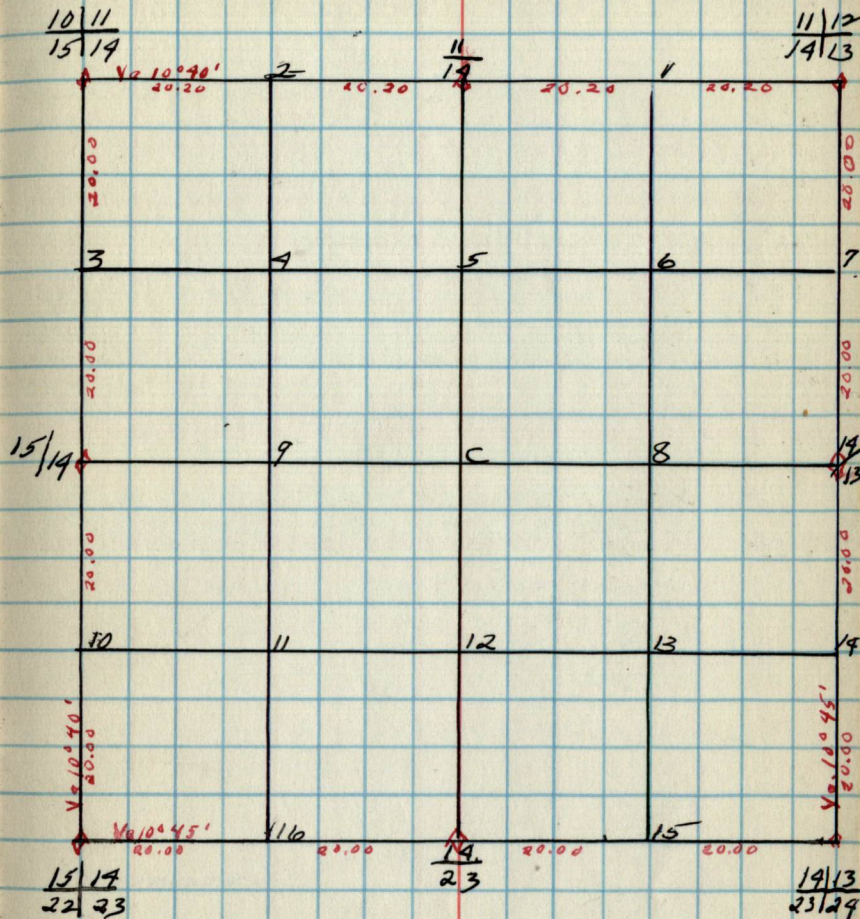
11/12
14/13
19
10/11
15/14
15/14
15/14
22/23
19
23
19/13
23/24
19/13

Tam.	5	N33E	.06
Tam.	5	S33E	.16
Tam.	5	S44W	.25
Tam.	5	N75W	.18

B.T.'s Found & W.T.'s Set.

Cor. Spec. D.b.h. Bear. Dist. B.T. W.T.

14.

Sec. 14 T146N-R26W
by —B.T.'s & W.T.'s (CONT.)

Cor. Spec. D.b.h. Bear. Dist. B.T. W.T.

Notes

Chains

Chains

Type & Cultural Map

REMARKS:

15.

Original G.L.O. Corners

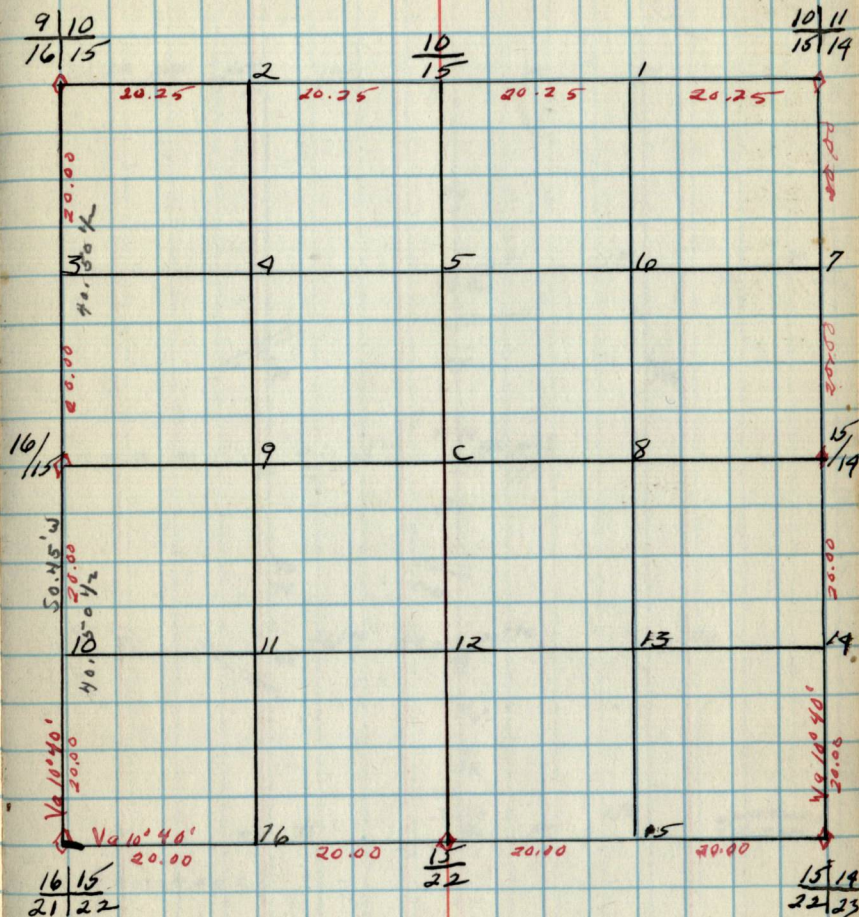
Cor. Spec. D.b.h. Bear. DIST.

10	11
15	14
10	
15	
9	10
16	15
16	15
16	15
21	22
15	
22	
15	14
22	23
15	14

B.T.'s Found & W.T.'s Set.

Cor. Spec. D.b.h. Bear. DIST. B.T.W.T.

15.

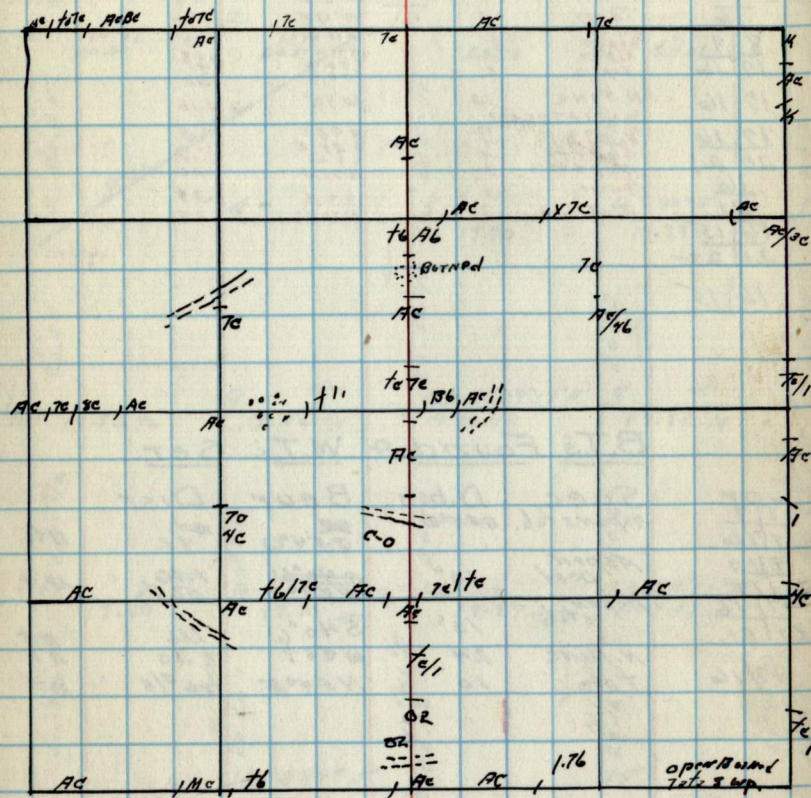
Sec 15 T146N-R26W
Dy -B.T.'s & W.T.'s (CONT.)

Cor. Spec. D.b.h. Bear. DIST B.T.W.T.

Notes

Charts

Charts

Type & Cultural Map

REMARKS:

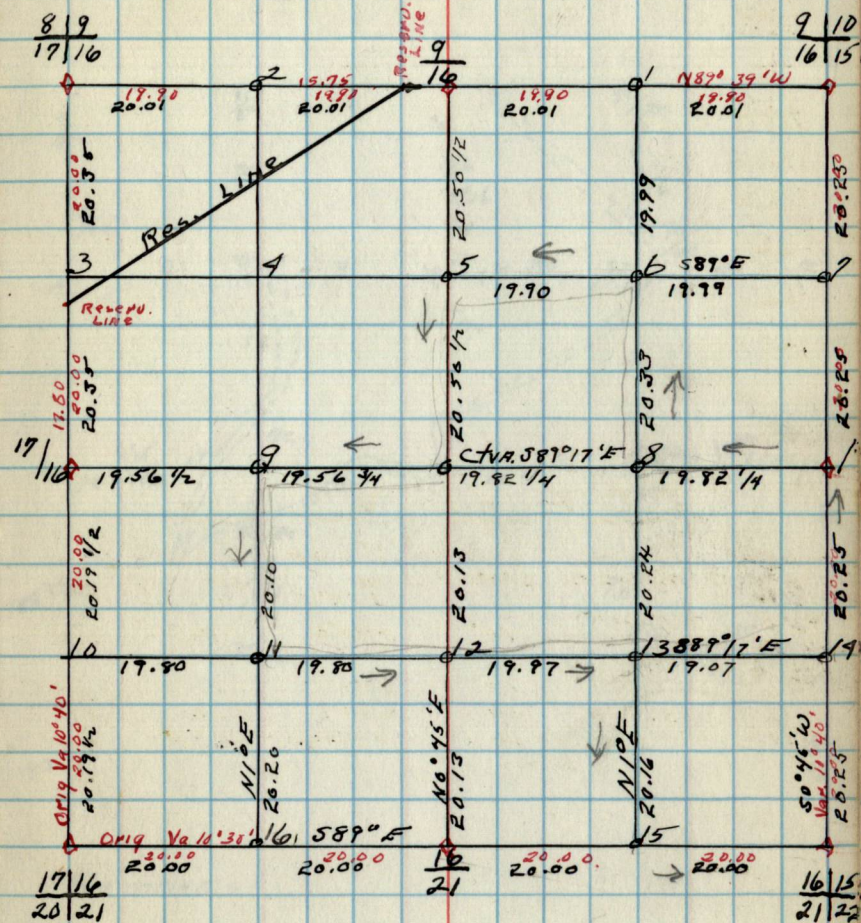
Original G.L.O. Corners
Spec. D.b.h. Bear. Dist.

Cor.	Spec.	D.b.h.	Bear.	Dist.
9/16	Tamm.	4	S 8 E	.24
16/15	Tamm.	4	N 4 E	.90
9/16	Aspen	3	N 1 E	.13
8/9	Aspen	4	N 41 W	.38
17/16	Aspen	5	S 65 W	.58
17/16	N. PINE	12	W 90°	2.10
17/16	No. The Tree	12		
20/21	N. PINE	4	N 98 E	1.05
16	Aspen	4	S 35 E	1.20
21	Aspen	3	S 1 W	1.15
16/15	Tamm.	3	N 27 W	1.20
21/22	B. of Gil.	3	S 3 E	.39
16/15			N 10 W	.39

B.T.'s Found & W.T.'s Set

Cor.	Spec.	D.b.h.	Bear.	Dist.	B.T.
17/16	Aspen's 66.	5 1/2"	S 54° W	1 1/2	B.T.
9/16	Aspen Dead	10"	S 40° W	1 1/2	B.T.
16/15	Aspen's 66	10'	N 29° E	.56 1/2	B.T.
20/21	N. PINE	24	West	1.16	B.T.
17/16	Tamm.	10	N 54° E	46 3/4	B.T.

Sec. 16 T 146 N - R 26 W.
Dy -



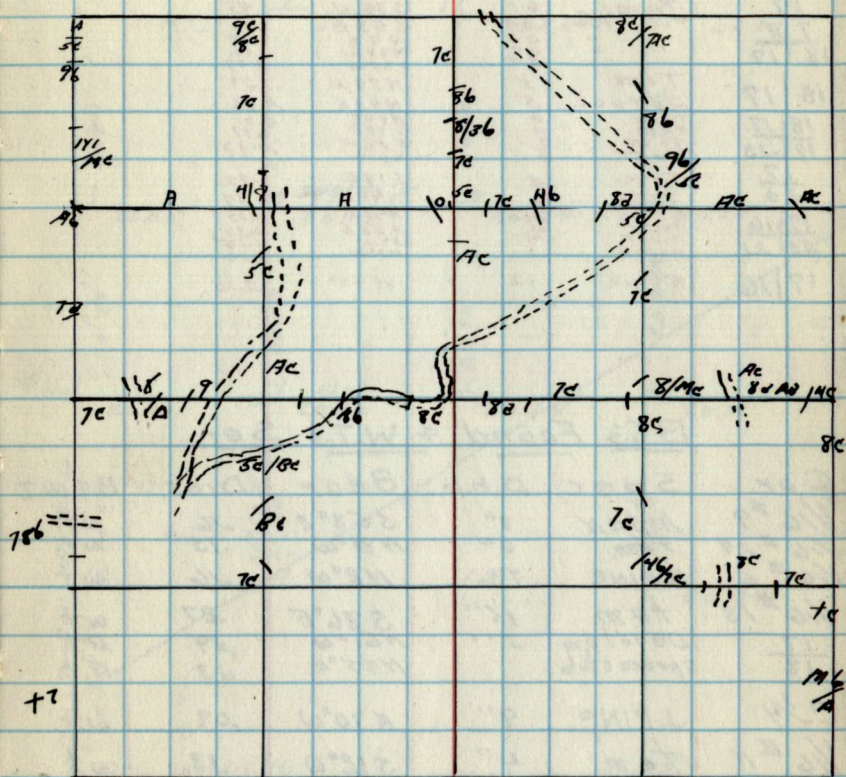
B.T.'s & W.T.'s (CONT.)

Cor. Spec. D.b.h. Bear. Dist. B.T. W.T.

Notes

Chains

Chains

Type 4 Cultural Map

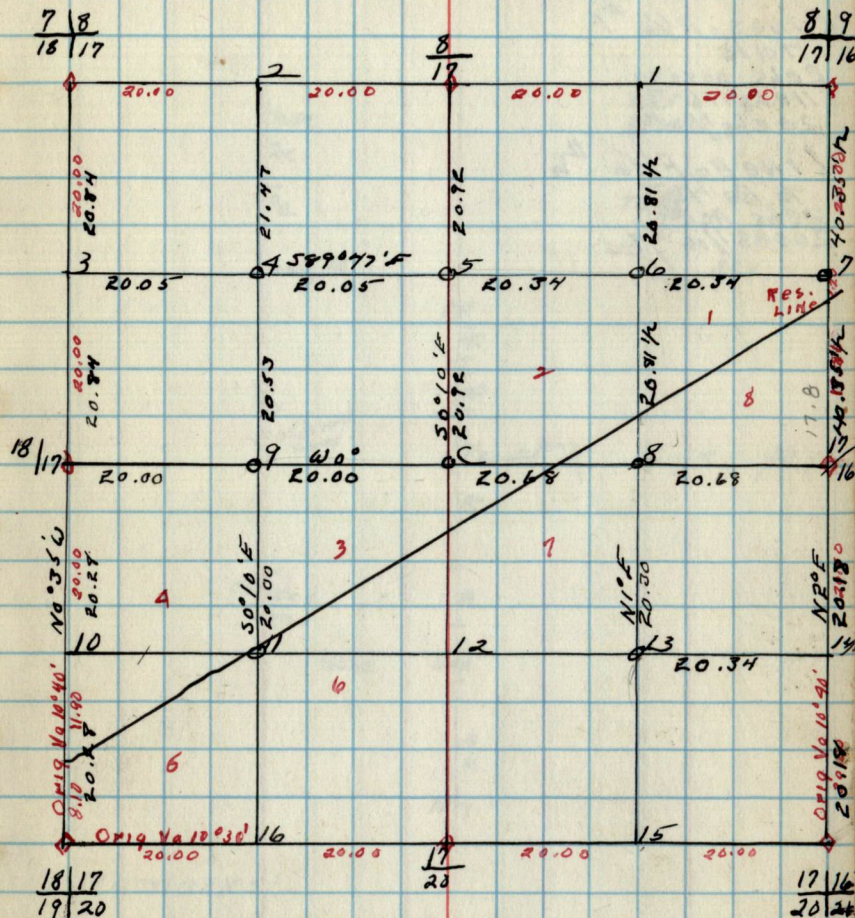
Remarks:

Original G.L.O. Corners

Cor.	Spec.	D.b.h.	Bear.	Dist.
8/19	Aspen	5"	N15E	.13
17/16	Aspen	4"	N41W	.38
8/17	Aspen	5"	S65W	.45
17	Aspen	5"	S88E	.60
7/8	Tam.	5"	N35E	.11
18/17	Tam.	6"	S80W	.25
18/17	Pine stub	4"	S53E	.13
18/17	"	4"	N7E	.29
18/17	"	4"	N38W	.13
18/17	"	4"	S24W	.29
18/17	Tam.	5"	N59W	.29
18/17	Spruce	5"	N43E	.13
18/17	Tam.	5"	N4E	.17
18/17	Tam.	5"	S75E	.17
18/20	Tam.	5"	S20W	.13
17	Tam.	4"	N7W	.23
20	Tam.	4"	S18E	.32
17/16	Tam.	4"	N46W	.17
20/21	N.PINE	12"	N78E	1.05
17/16	N.PINE	12"	S25E	1.36
17/16	N.PINE	12"	S12W	1.76
17/16	N.PINE	12"	N37W	1.20
17/16	N.PINE	12"	W90°	2.10

B.T.'s Found & W.T.'s Set.

Cor.	Spec.	D.b.h.	Bear.	Dist.	B.T./W.T.
1/16 #9	Aspen	8"	S58°E	.16	w.t.
1/16 #14	Tam.	6"	N86°W	.73	w.t.
1/16 #6	J.PINE	7"	N2°W	.16	w.t.
1/16 #13	Tam.	15"	S86°E	.27	w.t.
17/18	Dead Tam	5"	N61°W	.29	B.t.
17/18	Spruce stub	5"	N45°E	.13	B.t.
C 1/4	J.PINE	9"	N70°W	.09	w.t.
1/16 #11	Tam.	4"	S12°W	.13	w.t.
1/16 #4	Aspen	10"	N37°W	.30	w.t.
1/16 #5	J.PINE	9"	N44°E	.26	w.t.
1/16 #8	W.PINE	15"	N20°E	.42	w.t.
1/16 #8	Aspen	8"	N4°E	.16	w.t.

Sec. 17 T146N - R26W.
by -

B.T.'s & W.T.'s (CONT.)

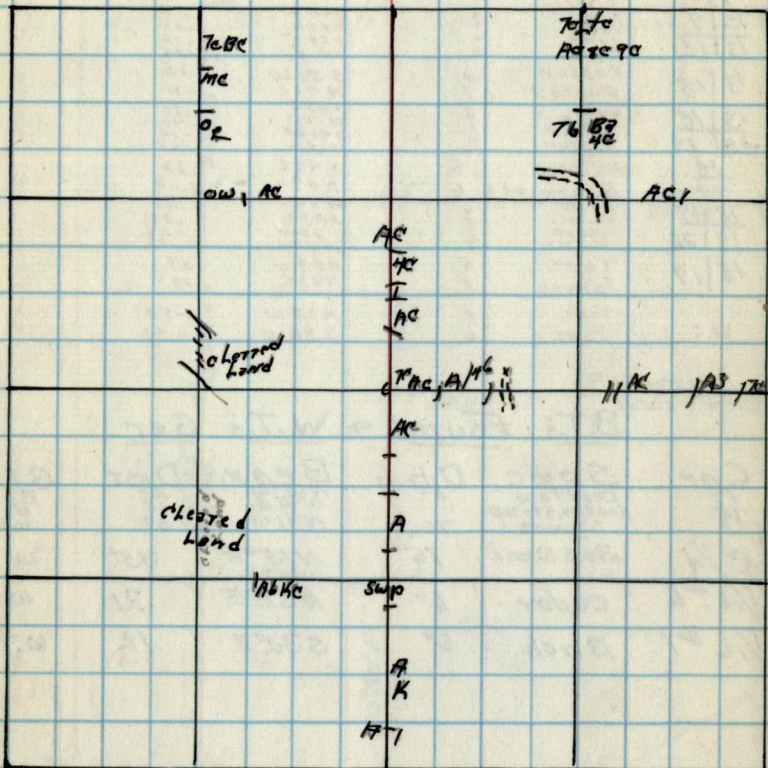
Cor.	Spec.	D.b.h.	Bear.	Dist.	B.T./W.T.
------	-------	--------	-------	-------	-----------

Notes

CHAINS

Line of F/16 #1
 7c/te
 2chs AC2c9c
 11chs 7c 3c
 20chs 1/16 #6
 Line of F/16 #6
 7c Ba 4c
 2chs AC1
 20chs 1/16 #7

Chains

Type & Cultural Map

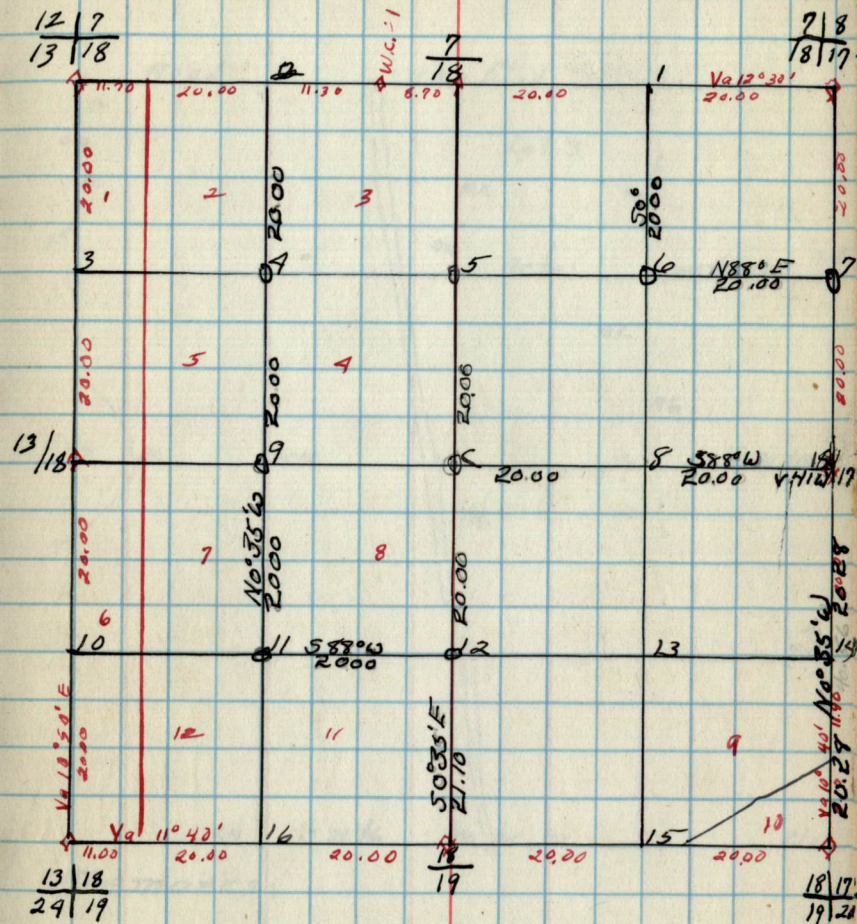
Remarks:

Original G.L.O. Corners

Cor.	Spec.	D.b.h.	Bear.	Dist.
7/18	Pine Stub	2.24	S52E	.83
18/17	"	4.00	N7E	.35
7/8	"	4.00	N33W	1.13
12/7	"	6.00	S33W	1.37
13/18	X			
13/18	Tam.	6	N49W	.22
13/18	Tam.	6	S52E	.16
13/18	Tam.	6	S25E	.16
13/18	Tam.	6	S18E	.15
13/18	Poplar	6	S21W	.12
13/18	Poplar	4	N71E	.11
13/18	Oak	8	S63E	.40
13/18	Birch	8	N51E	.40
13/18	Poplar	8	S90W	.10
13/18	Poplar	10	N58W	.88
18	Aspen	5	S49E	.35
19	Basswood	6	N57W	1.00
18/17	Tam.	6	N54E	.61
18/17	Tam.	6	S72E	.79
19/20	Tam.	6	S20W	1.33
18/17	Tam.	5	N59W	.29
18/17	Spruce	5	N43E	.13
W.C. 1.	Tam.	8	N55W	1.50
W.C. 1.	Tam.	6	S86W	1.40

B.T.s Found & W.T.s Set

Cor.	Spec.	D.b.h.	Bear.	Dist.	B.T. W.T.
17	Dead Tam		N67W	.25	B.T.
18	Red Spr. 6" amp	7"	N45E	.13	B.T.
18	Spruce	7"	N41W	.07	W.T.
C/4	Bass Wood	16"	N150E	.35	W.T.
1/16 #6	Cedar	6"	N670E	.21	W.T.
1/16 #7	Birch	6"	S32E	.12	W.T.

Sec. 18. T146N-R26W
by - Haberle

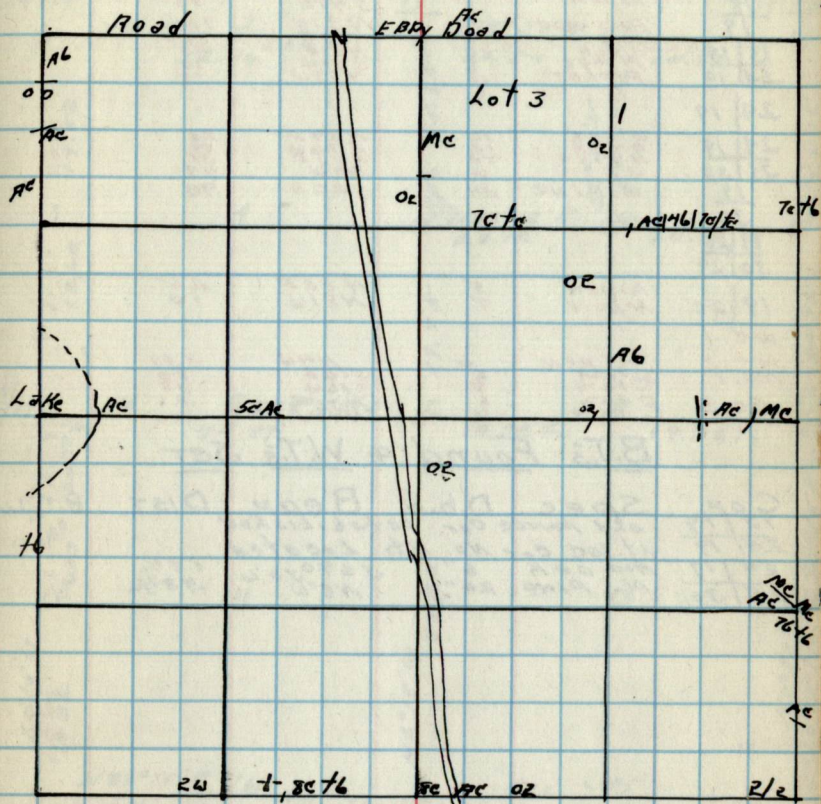
B.T.s & W.T.s (CONT.)

Cor.	Spec.	D.b.h.	Bear.	Dist.	B.T. W.T.
------	-------	--------	-------	-------	-----------

Chains

Notes

Chains.

Type & Cultural Map

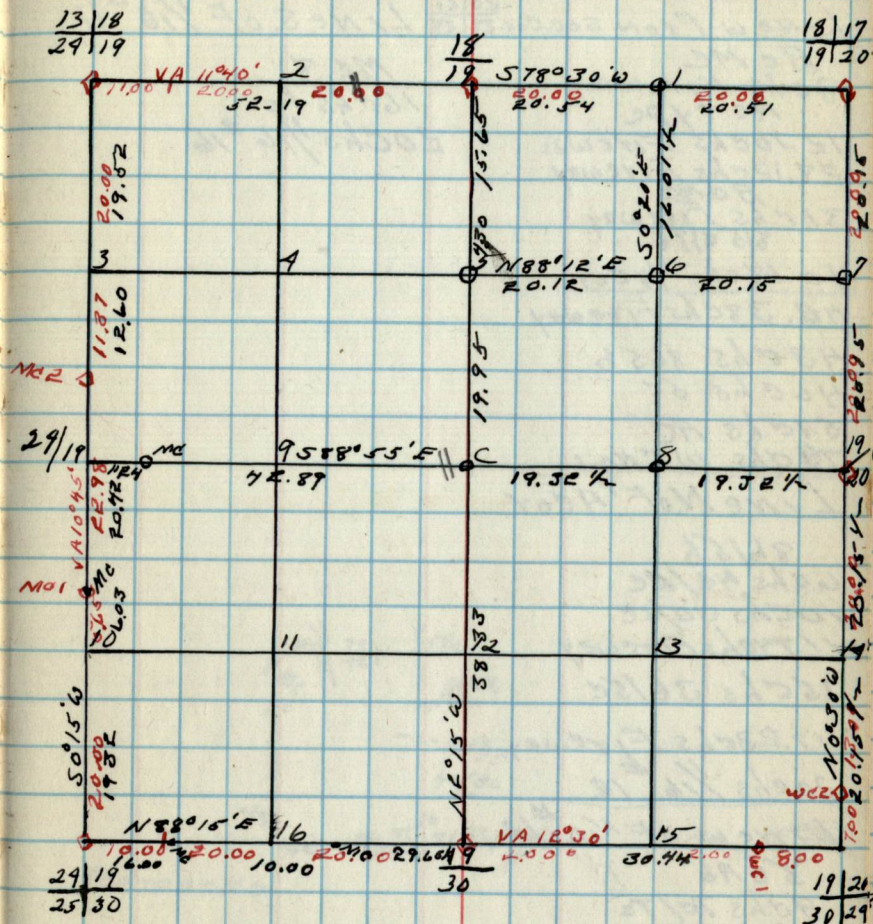
Remarks:

Original G.L.O. Corners

Com.	Spec.	D.b.h.	Beam.	Dist.
16 17				
19 20				
18 19	Aspen	5"	S 49 E	85'
	Basswood		N 37 W	100'
13 18			S 63 E	30'
24 19	Poplar		S 40 W	70'
			N 58 W	88'
24 19				
24 19	W Oak	11"	N 39 E	20'
25 30	N. PINE	7 1/2"	S 76 E	88'
19 30	W. PINE	24"	N 9 W	44'
			S 22 E	90'
19 20				
30 29	Aspen	5"	N 82 E	25'
19 20	Aspen	5"	N 81 W	10'
w.c. 1				
w.c. 2	Aspen	6"	N 4 W	3.00'
Mc. 1	E 1/2 m	6"	S 10 E	1.8'
Mc. 2	E 1/2 m	6"	S 16 W	1.25'
			N 55 E	1.5'
			N 47 W	1.00'

B.T.'s Found & W.T.'s Set.

Com.	Spec.	D.b.h.	Beam.	Dist.	B.T.	W.T.
13 18	Old Fence Cor.	6 1/2"	Established			
24 19	At. Soc. cor.	No. Bts.	Located			
24 19	Red Oak	6"	S 64 3/4 W	68 1/4'		
25 30	N. PINE	20"	N 8 W	43 1/4'		

Sec. 19 T. 146 N - R. 26 W.
By -

B.T.'s & W.T.'s (CONT.)

Com.	Spec.	D.b.h.	Beam.	Dist.	B.T.	W.T.
------	-------	--------	-------	-------	------	------

NOTES

CHAIRNS

Line W From sec. cor ^{20/21}/_{29/29} LINE S. OF 1/16 #11

Bc Mc

8chs Fireway

Mc type

12.10chs Fireway

28.12chs Fireway

31chs Fireway

Bc Mc

40.18chs 1/4 cor

42.38chs Fireway

43chs 8656

46chs 5c

57chs Mc

78chs W.C. No. 1

Line N. of 1/4 cor.

86/56

60chs Mc/Bc

10chs 3c/5c

11.74chs Fireway

15chs 36/5c

17.23chs Fireway

20chs 1/16 #12

Line W of 1/16 #12

5c A6

9chs Tc/Tc

15chs Mc

15.57chs Fireway

20chs 1/16 #11

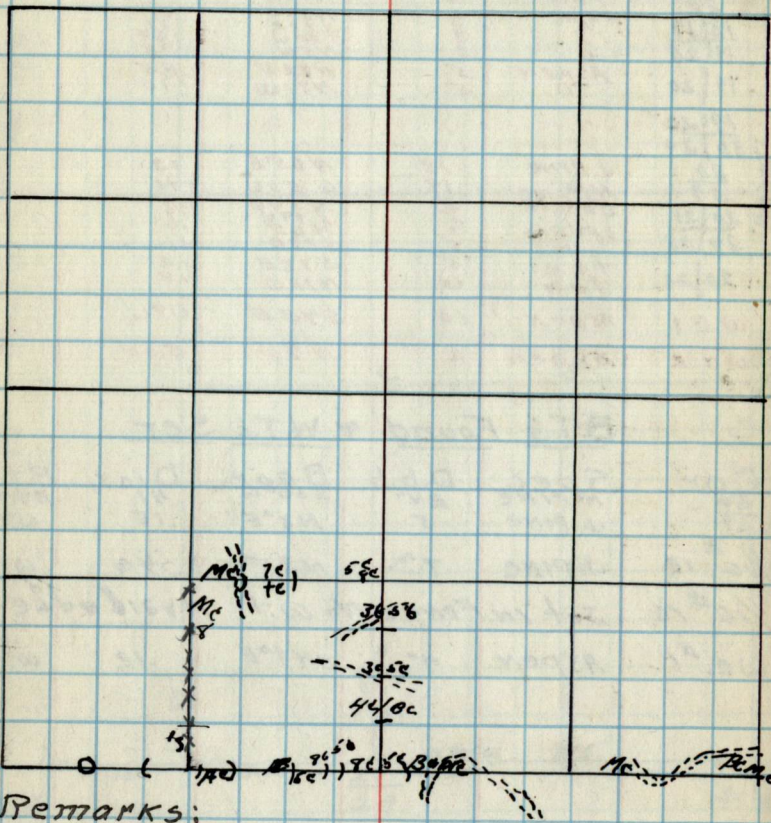
CHAIRNS

LINE S. OF 1/16 #11

Mc. 8

16chs 1s

20chs 1/16 #16

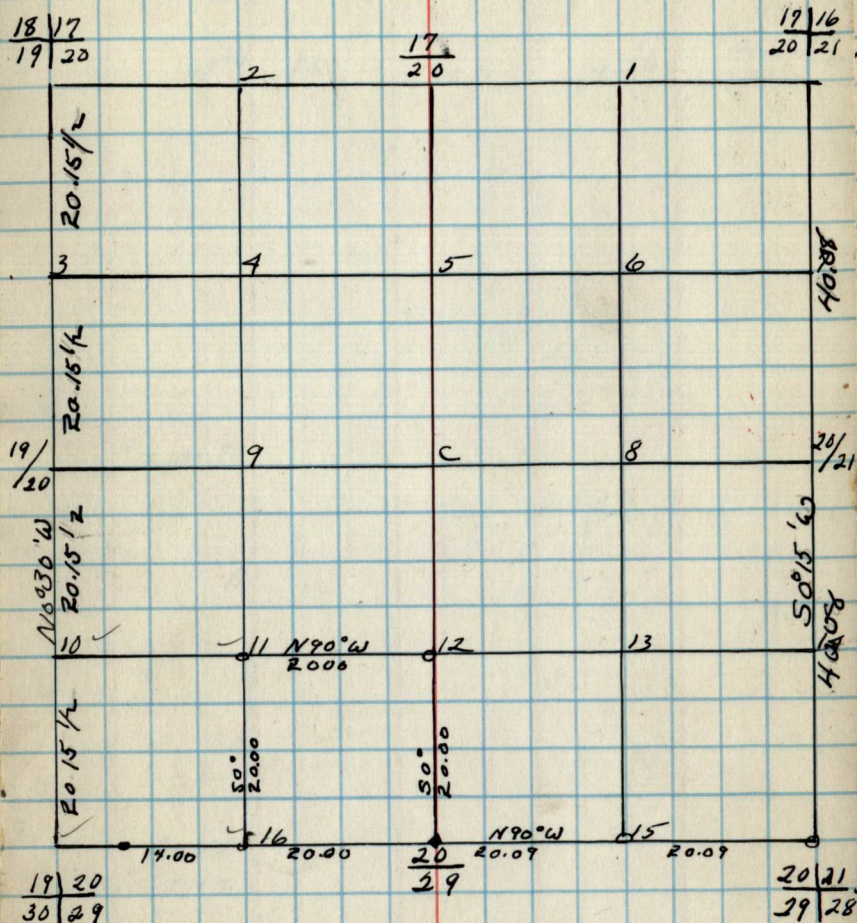
Type 4 Cultural Map

Original G.L.O. Corners

COM	Spec.	D.b.h.	BEAR.	DIST.
17/16	N. PINE	4 1/2	N78°E	1.66
20/21	"	4 1/2	S83°E	1.20
17/20	"	4	S79°W	1.20
18/17	TAM	4	S18°E	32
19/20	"	6	N46°W	17
19/20	"	6	N84°E	47
19/20	"	6	S77°E	123
19/20	"	6	S20°W	93
19/20	"	6	N5°W	25
19/20	ASPEN	5	N82°E	10
19/20	"	5	N81°W	10
19/20	J. PINE	12	N65°E	13
30/29	N. PINE	18	S50°W	41
20	Balsam	5	N33°W	35
20/21	"	5	S77°E	19
29/28	"	5	N6°E	11
20/21	TAM	5	S78°E	12
20/21	TAM	6	N12°W	18
W.C. 1	ASPEN	10	S43°E	196
W.C. 2	ASPEN	4	N7°W	3.00

B.T.'s Found & W.T.'s SET

COM.	SPEC.	D.b.h.	BEAR.	DIST.	B.T. W.T.
20/29	N. PINE	24"	S50°W	41	BT. W.T.
29	J. PINE	5	N3°E	.15	WT
1/16 # 12	J. PINE	7"	N35°E	.40	W.T.
1/16 # 16	set in fence No w.t. Available				
W.C. # 1	ASPEN	4"	S47°E	.12	W.T.

Sec 20 T146N-R26W
BY -

B.T.'s & W.T.'s (CONT.)

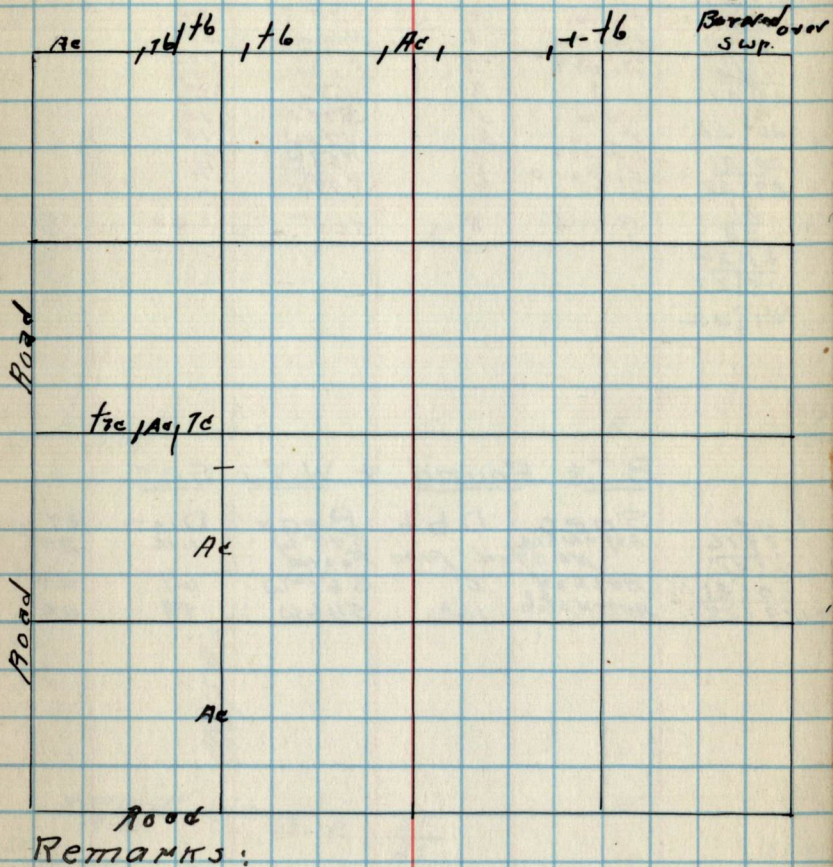
COM.	Spec.	D.b.h.	BEAR.	DIST.	B.T. W.T.
------	-------	--------	-------	-------	-----------

Notes

Chains

Chains

Type & Cultural Map



Original G.L.O. Corners

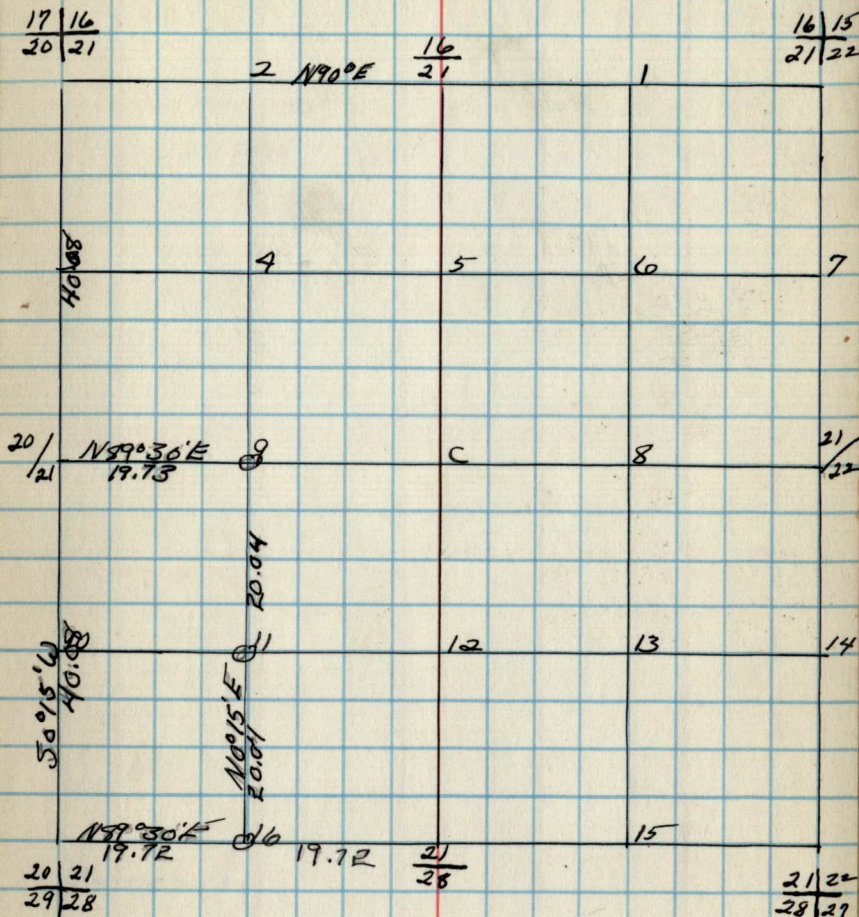
COM.	Spec.	D.b.h.	Bear.	DIST.
$\frac{16}{21}$				
$\frac{16}{21}$	2 m.	3	SSE	34
$\frac{17}{21}$	B. of G.L.	3	N10W	34
$\frac{17}{21}$	Aspen	12	N78E	18.6
$\frac{20}{21}$	"	4	SSE	1.56
$\frac{20}{21}$	"	4	S7W	1.26
$\frac{20}{21}$	"	5	N77W	1.20
$\frac{20}{21}$	2 m.	5	S78E	12
$\frac{20}{21}$	2 m.	6	N72W	18
$\frac{20}{21}$	Balsam	6	N7W	30
$\frac{29}{28}$	Spruce	4	S7E	19
$\frac{21}{28}$	"	8	N6E	11
$\frac{21}{28}$	Birch	8	S25	1.66
$\frac{21}{28}$				
$\frac{28}{27}$				
$\frac{21}{22}$				

B.T.'s Found & W.T.'s SET.

COM.	Spec.	D.b.h.	Bear.	DIST.	B.T. W.T.
$\frac{19}{21}$	Aspen stub		S40W	1.16	B.T.
$\frac{20}{21}$	No steel pipe		Found		
$\frac{20}{21}$	Balsam	6	S69W	64	W.T.
$\frac{29}{28}$	Aspen stub	16.6	S46W	89	B.T.

Sec 21 T146N-R26W

by -

B.T.'s & W.T.'s (CONT.)

COM.	Spec.	D.b.h.	Bear.	DIST.	B.T.	W.T.
------	-------	--------	-------	-------	------	------

22.

Notes

Chairs

Chairs

22.

Type & Cultural Map

Remarks:

Original G.L.O. COMPIERS

COR. Spec. D.b.h. Bear. DIST.

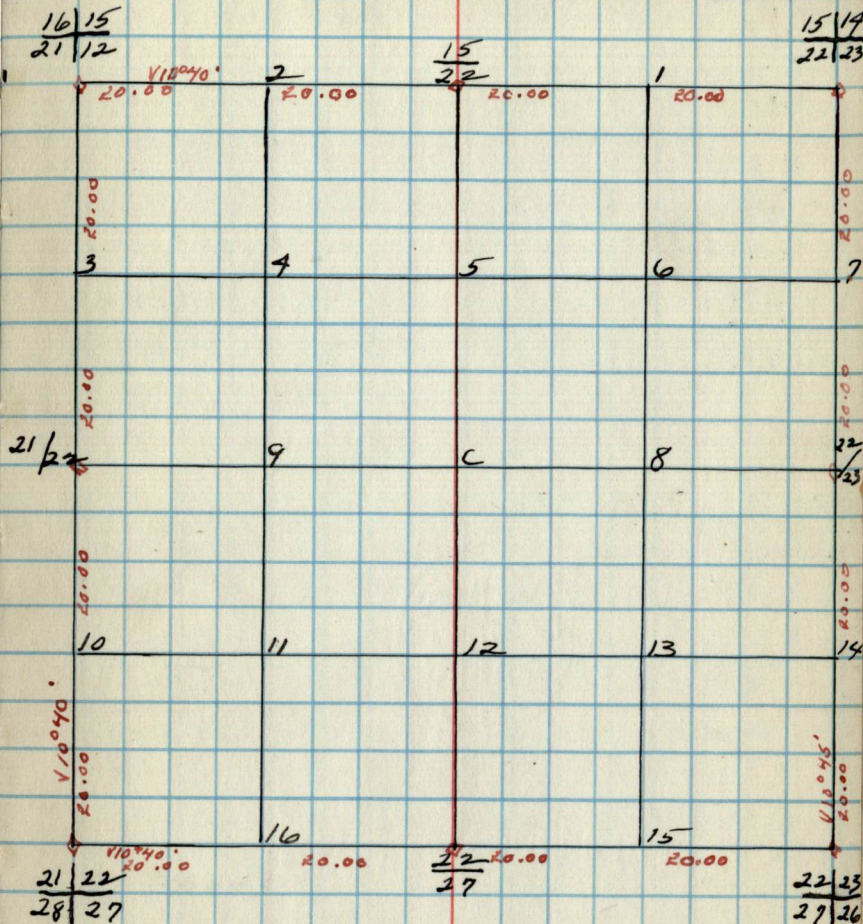
15	19
22	23
15	
22	
16	15
21	22
21	22
21	22
28	29
22	
27	
22	23
27	26
22	23

B.T.'s Found & W.T.'s Set.

COR. Spec. D.b.h. Bear. DIST. B.T.W.T.

Sec. 22 T146N-R26W.

BY -

B.T.'s & W.T.'s (CONT.)

COR. Spec. D.b.h. Bear. DIST. B.T.W.T.

Notes

Chains

Chains

Type & Cultural Map

Remarks:

23.

Original G.L.O. Corners

Com	Spec	D.b.h.	Bear.	DIST.
19/13	7.6 m	5.01	N 89° 30' E	9.6
23/24	"	4.8	S 73° 15' E	7.5
14/23	"	4.8	S 75° 30' E	2.5
22/23	"	4.8	N 75° 30' W	1.8
22/23				
15/14				
22/23				
22/23				
27/26				
23/26				
23/24	7.2 m	4	S 34° W	13
20/25	"	5	N 46° E	4.5
23/24	7.2 m	5	N 2° W	5.6
	7.2 m	5	S 18° E	13
	7.2 m	5	S 79° W	6.6

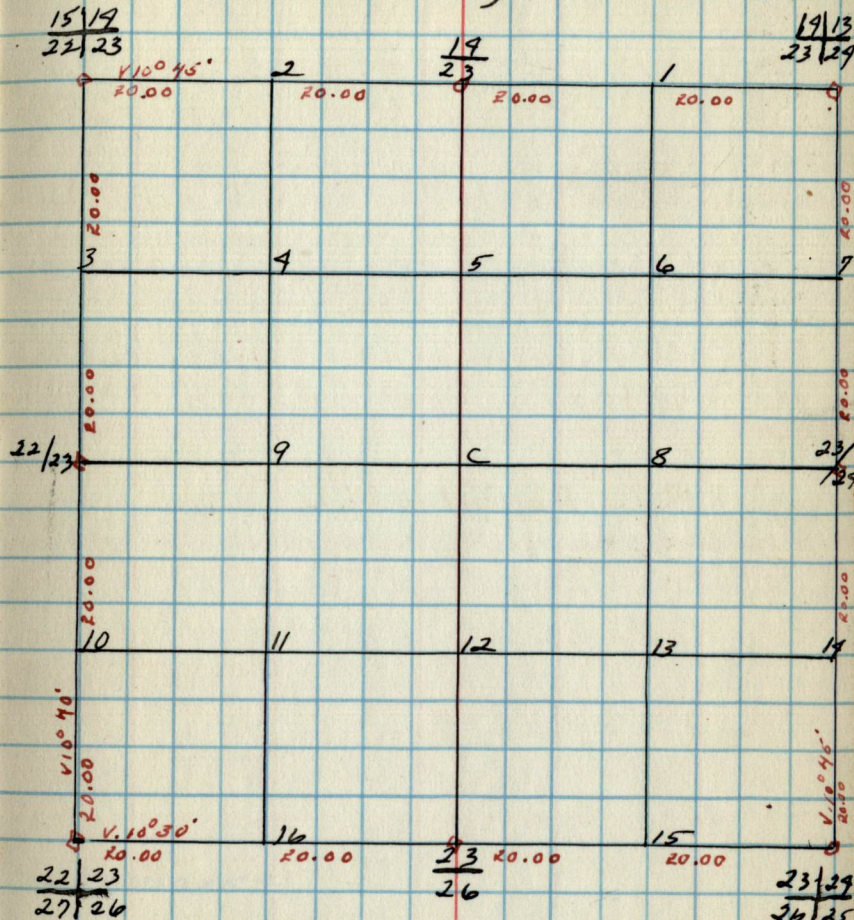
B.T.'s Found & W.T.'s Set.

Com. Spec. D.b.h. Bear. DIST. B.T. W.T.

23.

Sec. 23 T146N - R26W

DY -

B.T.'s & W.T.'s (CONT.)

Com. Spec. D.b.h. Bear. DIST. B.T. W.T.

23/29
26/25

Notes

Chains

Chains

Type & Cultural Map

REMARKS:

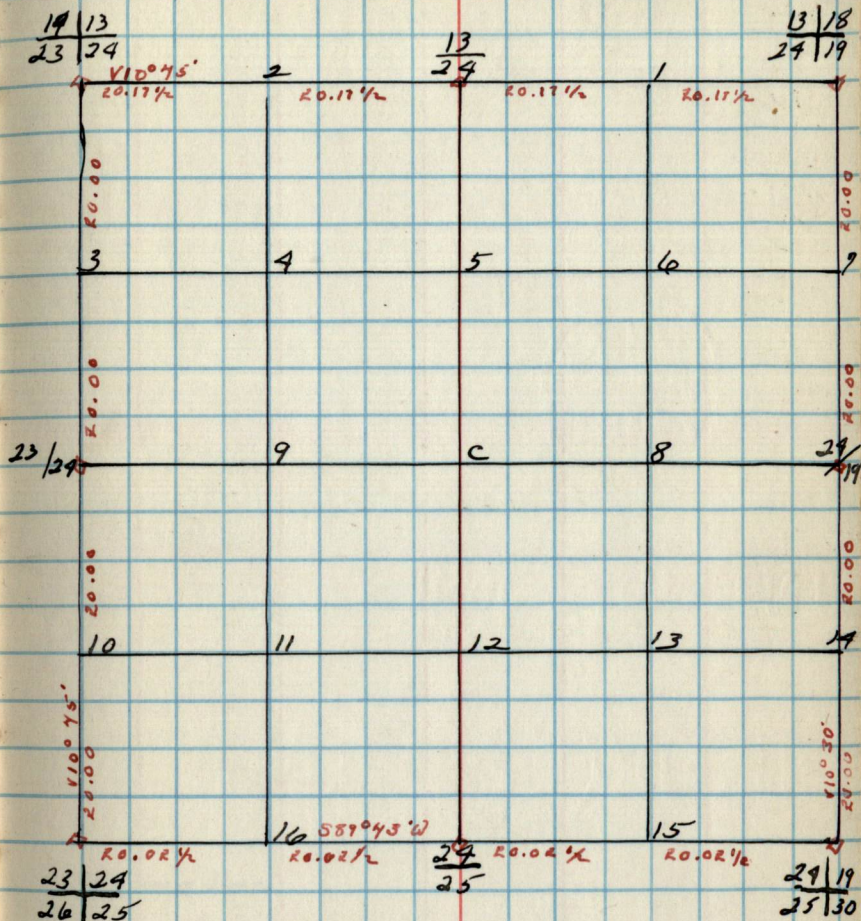
Original G.L.O. Corners

Cor.	Spec.	Db.h	Bear.	Dist.
13/18	Dead pine	20	S 81 W	1.14
24/19	"	20	S 74 W	1.13
13/24	"	16	N 80 W	1.16
19/13	tam.	5	N 33 E	.06
23/24	"	5	S 33 E	.18
23/24	tam	5	S 44 W	.12
23/24	tam	6	N 75 W	.12
23/24	tam	5	S 18 E	.13
23/24	tam	5	S 79 W	.16
26/25	"	6	S 34 W	.13
26/25	"	8	S 73 E	.14
29/25	tam	5	N 41 E	.46
29/25	tam	5	N 8 W	.36
29/19	Dead cedar	10	S 74 W	.26
25/30	"	10	N 52 W	.31
25/30	"	10	N 41 E	.38
25/30	"	10	S 77 E	.28
29/19	Aspen	4	S 16 W	.24
29/19	Aspen	4	N 11 E	.12
29/19	Aspen	4	N 80 W	.60

B.T.'s Found & W.T.'s Set

Cor. Spec. Db.h. Bear. Dist. B.T. W.T.

Sec. 24 T146N-R26W
by -



B.T.'s & W.T.'s (CONT.)

Cor. Spec. Db.h. Bear. Dist. B.T. W.T.

25.

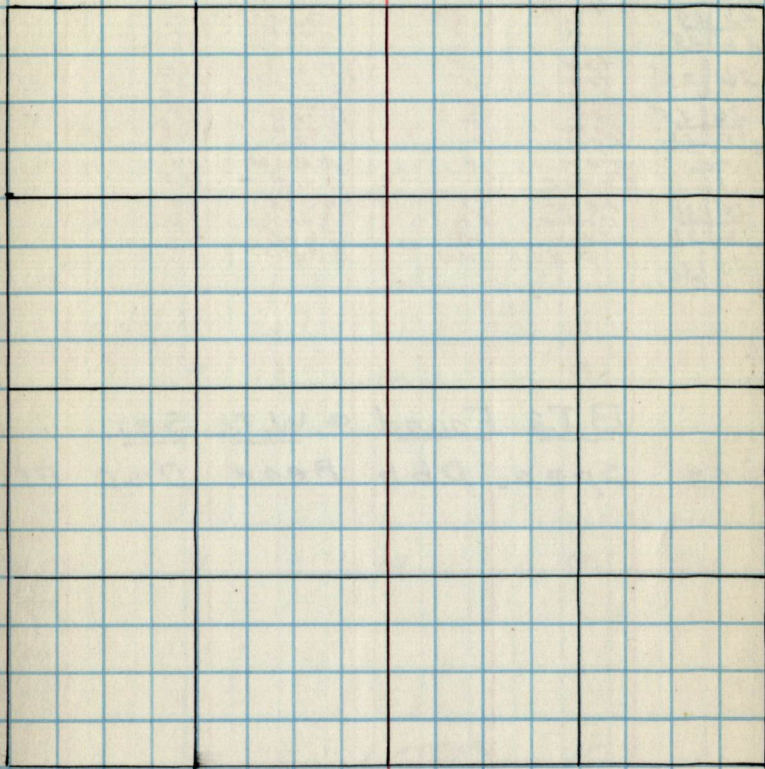
NOTES

CHAINS

CHAINS

25.

Type & Cultural Map



REMARKS:

25.

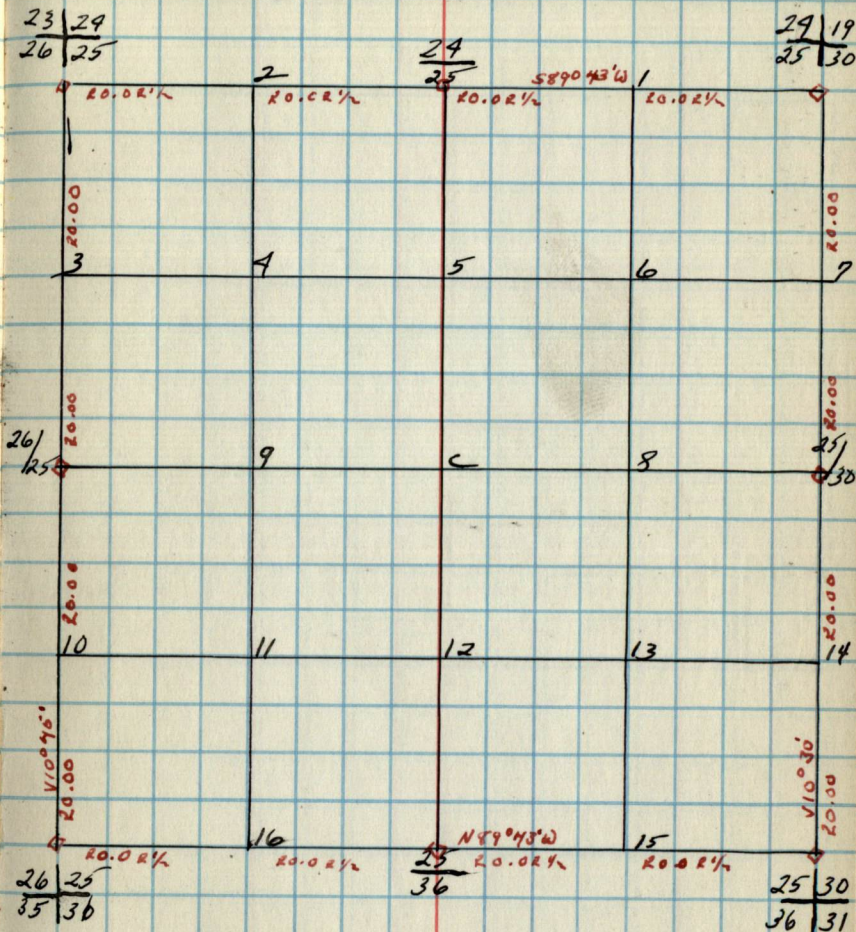
Original G.L.O. Corners

Com.	Spec.	Db.h.	BEAR.	DIST.
24 19				
25 30				
23 29	tam	5	N74W	26
26 25	tam	5	N32W	31
25 30	tam	6	S37W	13
23 29	tam	6	S72E	26
26 25	tam	6	N46W	36
26 25	tam	5	N2W	32
26 25	tam	5	S16W	40
26 35	tam	10	S41E	12
35 36	tam	10	N20E	18
25 30	tam	6	S42E	10
36	Cedar	6	S51W	18
25 30	tam	8	N22W	30
36 31	Cedar	12	S31E	37
25 30	pine	20	N39E	46
			N66W	100
			S66E	51.06
			S25W	

B.T.'s Found & W.T.'s Set.

Com. Spec. Db.h. BEAR. DIST. B.T. W.T.

25.

Sec. 25 T146N-R26W
by -

B.T.'s & W.T.'s (CONT.)

Com. Spec. Db.h. BEAR. DIST. B.T. W.T.

26.

Notes

Chairs

Chairs

26.

Type & Cultural Map

REMARKS:

Original G.L.D. Corners

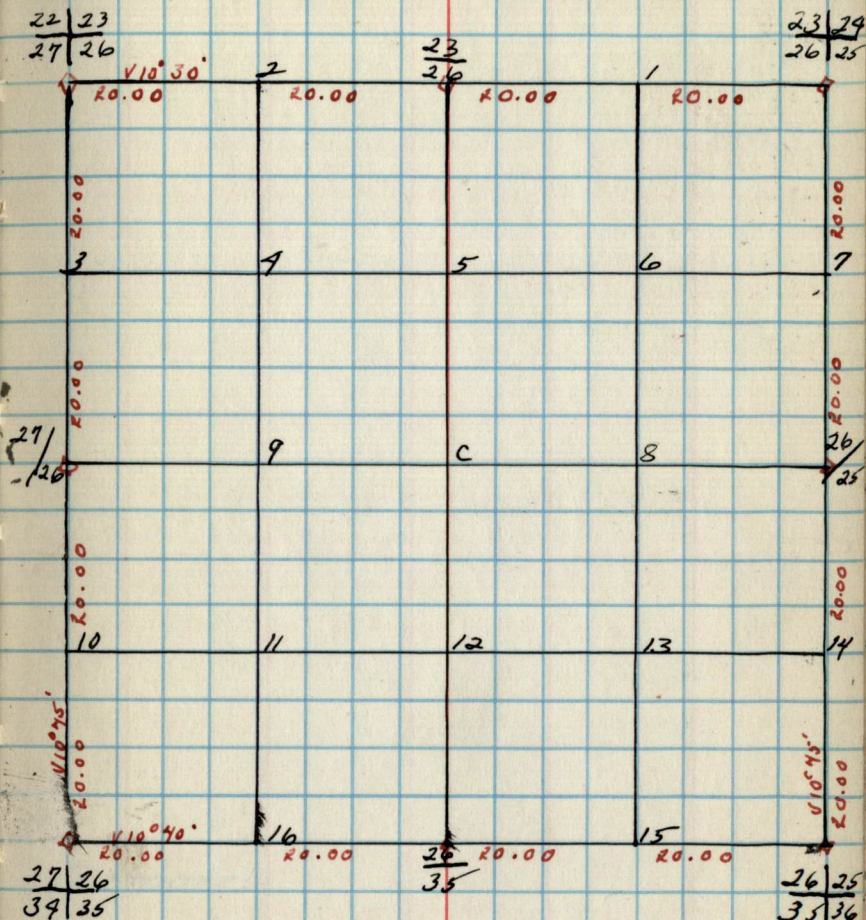
Cor.	Spec.	D.b.h.	Bear.	DIST
23 29	1.0 m		S 72° W	13
26 25	1.0 m		S 78° W	14
22	1.0 m		N 72° E	13
26				14
22 23				
27 26				
27 26				
27 26				
39 35				
26				
35				
26 25	fam.	5	N 70° E	12
35 36	1.0 m	6	S 71° W	15
26 25	fam.	5	N 72° W	16
	fam.	5	S 16° W	32
	fam.	5	S 41° E	40

B.T.'s Found & W.T.'s SET

Cor. Spec. D.b.h. Bear. DIST. B.T. W.T.

Sec. 26 T146N-R26W

by -



B.T.'s & W.T.'s (CONT.)

Cor Spec. D.b.h. Bear. DIST. B.T. W.T.

27.

Notes
Chains Chains

27.

Type & Cultural Map

Remarks:

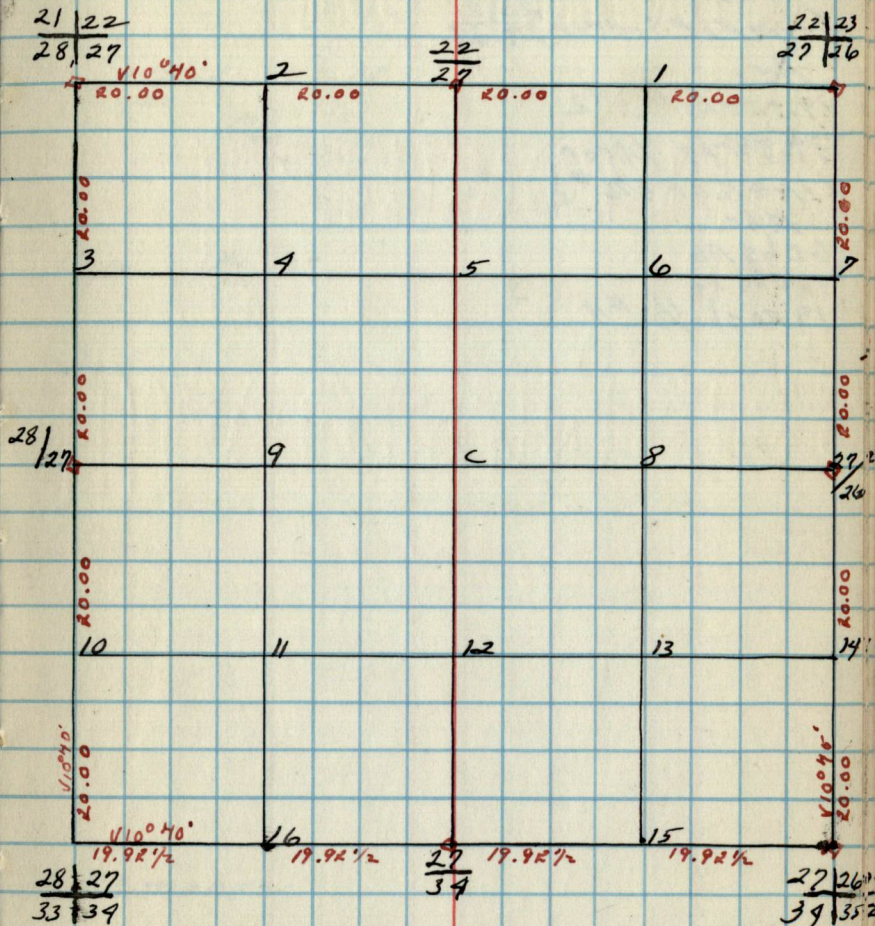
Original G.L.O. Counters
Spec. D.b.h. Bear. Dist.

COM
 22|23
 27|26
 22
 27
 21|22
 28|27
 28|27
 28|27
 33|39
 22
 34
 27|26
 39|35
 37|26

B.T.'s Found & W.T.'s Set

Cor. Spec. D.b.h. Bear. Dist. B.T. W.T.

Sec. 27 T146N-R26W.
by-



B.T.'s & W.T.'s (CONT.)

Cor. Spec. D.b.h. Bear. Dist. B.T. W.T.

NOTES

Chains

LINE OF SODDOR $\frac{20}{29} \frac{21}{28}$

AC1

19.92chs $\frac{1}{16}$ #239.84chs $\frac{1}{4}$ corLINE S. OF $\frac{1}{16}$ #2

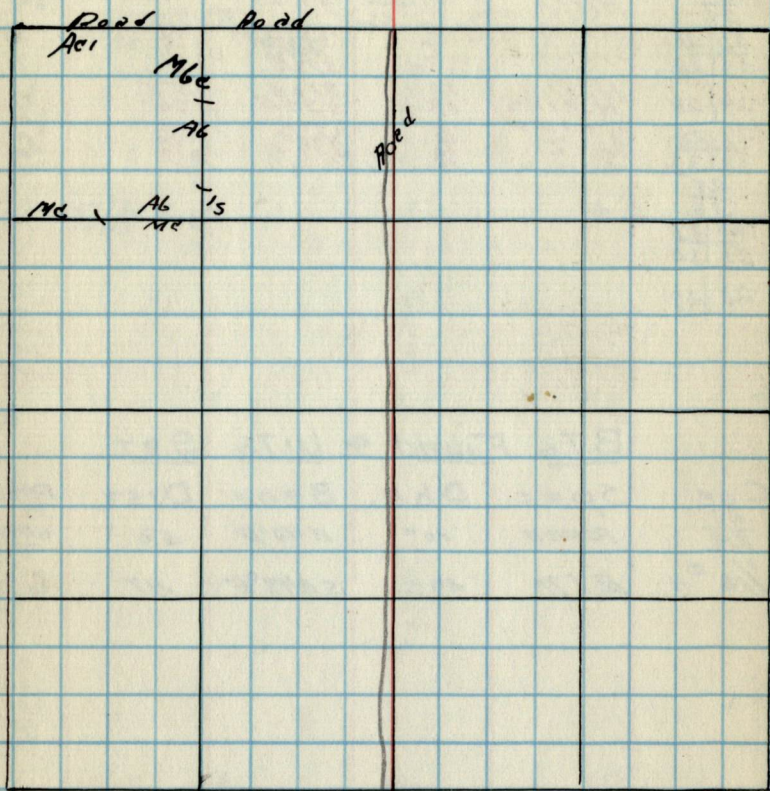
M6c

6chs AB

18chs 1s

19.80chs $\frac{1}{16}$ #4

Chains

Type & Cultural Map

REMARKS:

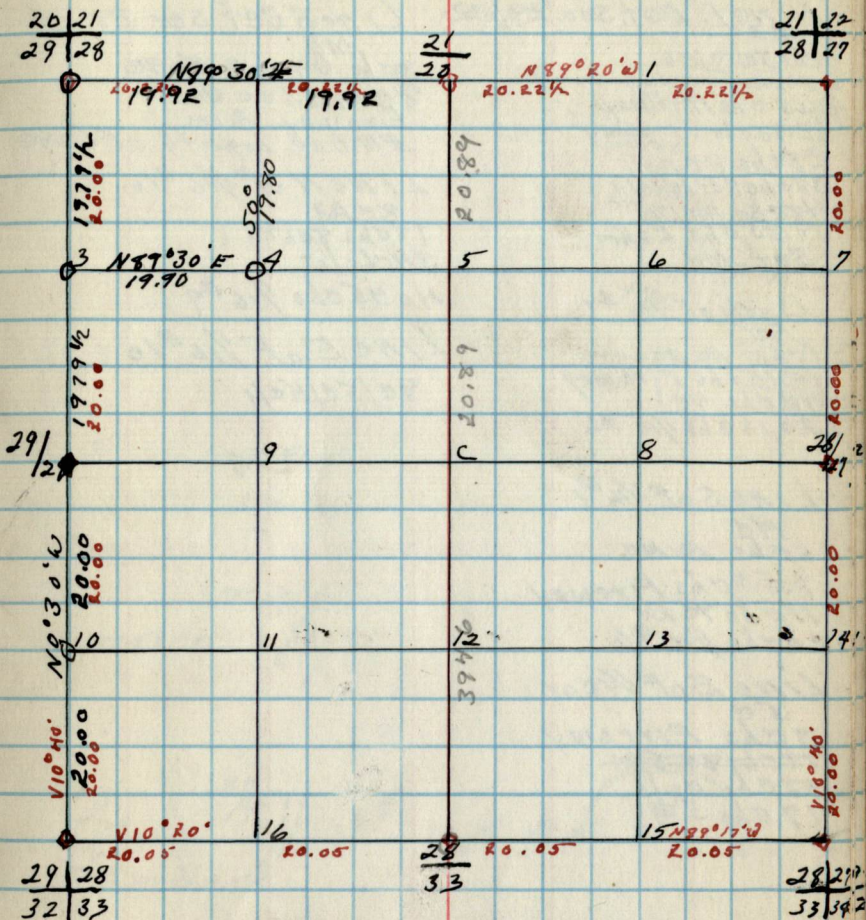
Original G.L.O. Corners
Spec. Db.h. Bear. Dist.

Com.	Spec.	Db.h.	Bear.	Dist.
21 22				
28 27				
21 28	Bitch	8	S 2 E	1.65
20 21	Balsam	5	N 57 W	55
29 28	SPRUCE	5.78	N 6 E	13
29 28	"	5.78	S 7 E	11
29 28	N. PINE	10	S 100	5.5
29 28	N. PINE	12	S 34 E	76
29 28	J. PINE	10	S 4 E	36
32 33	"	12	N 89 W	39
28 27				
33 34				
28 27				

B.T.'s Found & W.T.'s Set.

Com.	Spec.	Db.h.	Bear.	Dist.	B.T.	W.T.
21 28	Aspen	10"	N 40° E	56	wt.	
1/16 #4	ELM	20	S 48° E	.47	wt.	

Sec 28 T146N-R26W
by -



B.T.'s & W.T.'s (cont.)

Com.	Spec.	Db.h.	Bear.	Dist.	B.T.	W.T.
------	-------	-------	-------	-------	------	------

Notes

Chains

LINE E. Bot. Sec. 29/32

4chs 8c/5c/1/6
 6.80chs Fireway
 10.65chs Highway
 22.90chs Fireway

28chs 8c/1
 38chs 8c/10/1/1
 42chs Mt/1
 51.83chs Lake
 Set Md.

Line W. of 1/16 #7
 Ac
 5chs Ac Bc
 10.10chs Fireway
 12chs 4c
 20.13chs 1/16 #6

Line S of 1/16 #1

Md
 6chs Bc Mc
 7.53chs Fireway
 11chs 4c Bc
 20chs 1/16 #6

Line E of 1/4 cor

59
 30chs Fireway
~~78chs 8c/1~~
 17chs 02/1
 19chs 5c/1

Chains

Line S Bet sec. 29. 28

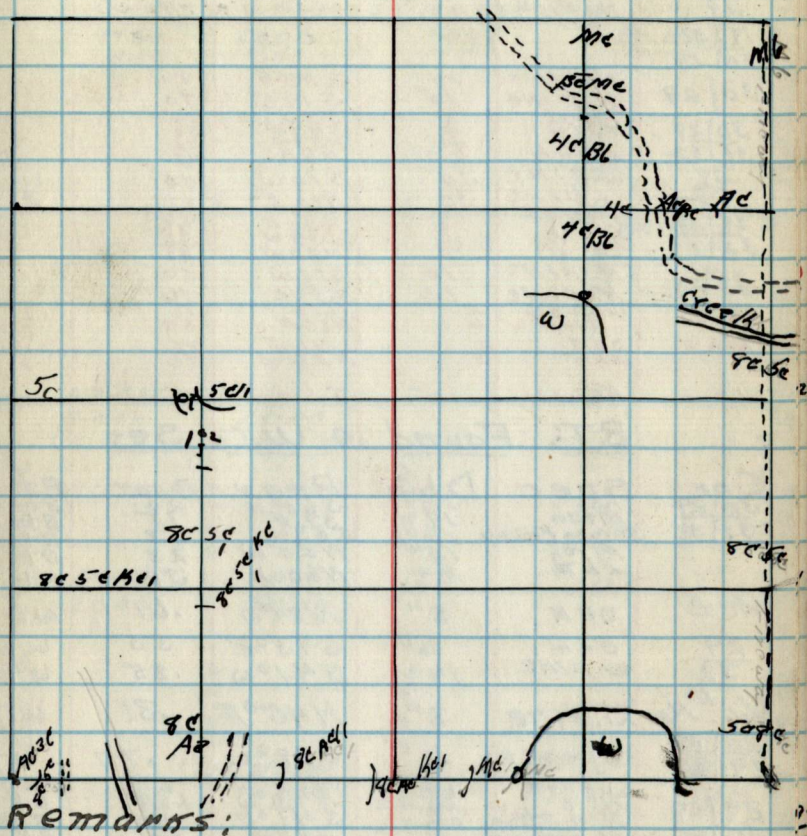
M6
 30chs 8c/10/1/1
 80chs. Sec cor
 Fireway Acms
 ENTIRE Length of LINE

Line N of 1/16 #16

8c/1
 18chs 8c/1
 34chs/1
 40.45chs 1/16 #9

Line E of 1/16 #10

8c/5c/1/1

Type 9 Cultural Map

29.

MC3

N. PINE	24	527W	90
W. PINE		515E	1.00

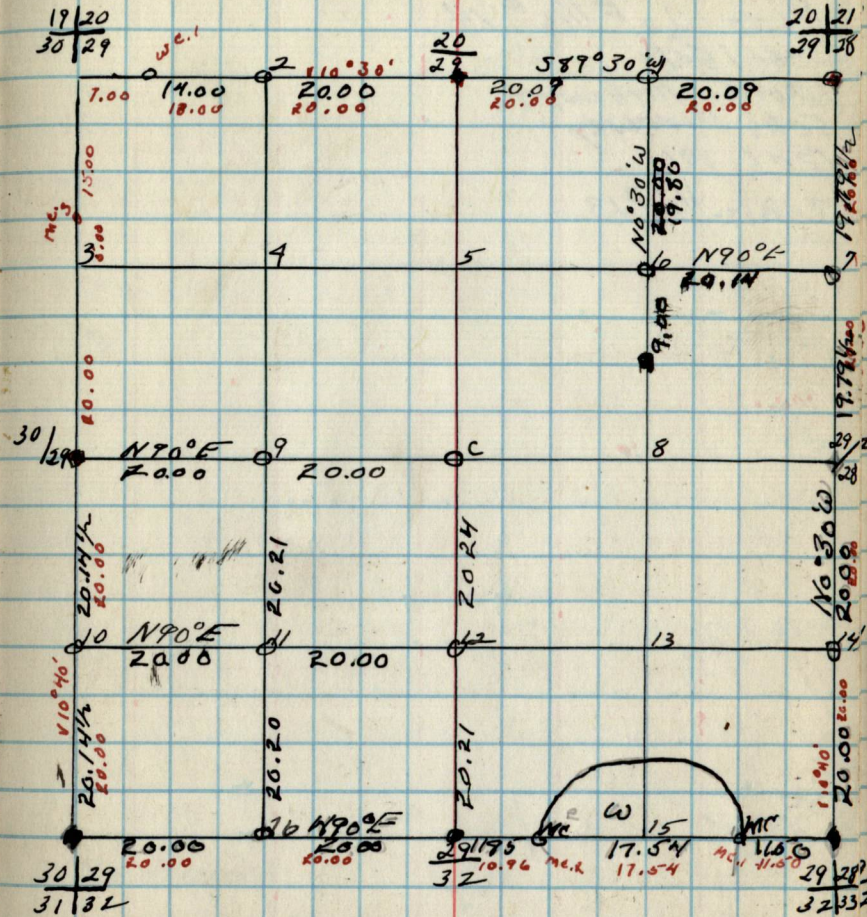
Original G.L.O. Corners

Com.	Spec.	D.b.h.	Bear.	Dist.
20 21	Balsam	5	N57W	5.2
29 28	Spruce	8	N70W	1.8
20	J. PINE	12	N65E	13
29	N. PINE	18	550W	41
19 20				
30 29	N. PINE	14	548E	70
30 29	N. PINE	10	519W	70
30 29	Birch	6	534W	30
31 32	Birch	4	N54W	52
29	W. PINE	30	N6E	47
32	W. PINE	30	510W	45
29 28	J. PINE	10	N10E	77
32 33	X	10	N57E	36
	X	12	N54W	38
	X	12	N20W	47
29 28	N. PINE	10	510W	55
	N. PINE	12	554E	76
MC.1	Willow	2	564E	54
	Birch	2	N84E	54
MC.2	Oak	2	546W	30
	Oak	2	N29W	30
WC.1	Aspen	10	543E	176

B.T.'s Found & W.T.'s Set

Com.	Spec.	D.b.h.	Bear.	Dist.	B.T.	W.T.
30 29	Birch	10"	548E	2.5	B.T.	W.T.
31 32	Spruce/Fallow	10"	563E	1.3	B.T.	W.T.
	Birch	10"	N25W	2.3	B.T.	
	Elm	4"	N60W	3R	B.T.	
MC2	ORK	6"	N84W	.61		W.T.
29	oak	6"	5430E	.55		W.T.
32	W. PINE	14"	5410W	.85		W.T.
1/16 #16	J. PINE	3"	N450E	.31		W.T.
20 21	Spruce	10"	5720W	.77		W.T.
29 29	J. PINE	12	N690W	.64		B.T. W.T.
	N. "	16	N460W	1.28		W.T.
29 28	N. " Stamp	20	N410E	.60		B.T.
29 29	N. " Stamp	12	N34W	.54		W.T.
32 33	J. PINE	12	N30W	.71		W.T.
	J. PINE	12	N89W	.42		W.T.
1/16 #14	Birch	2"	N50W	.26		W.T.
1/16 #7	Aspen	10"	5710E	.20		W.T.
	Stub	10"	N70E	.19		W.T.
1/16 #1	Elm	4"				
1/16 #6	Cedar	4"	N55W	.03		W.T.

29.

Sec. 29 T146N-R26W
by Haberle

B.T.'s & W.T.'s (CONT.)

Com.	Spec.	D.b.h.	Bear.	Dist.	B.T.	W.T.
1/16 #10	J. PINE	6	591E	54		W.T.
1/16 #11	N. PINE	8	51W	54		W.T.
1/16 #12	OAK	6	N720W	10		W.T.
1/16 #12	J. PINE	12"	N750W	15		W.T.

Notes

Chains

Chains

Line W of F 1/16 # 14

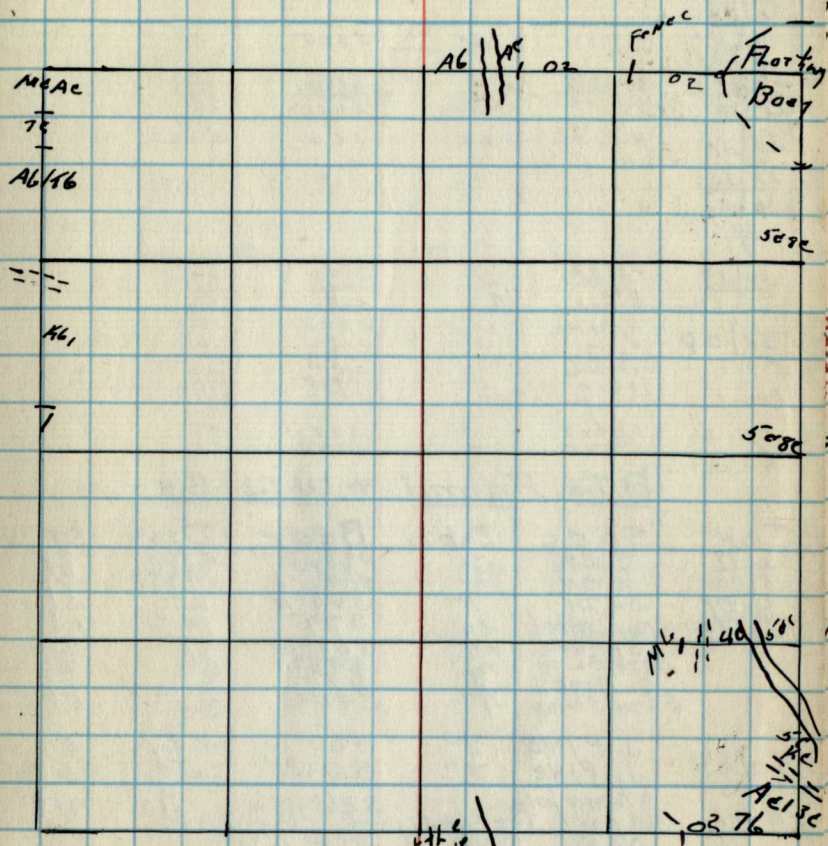
8c/541

1.70chs Highway 46

5chs Fireway

12chs M6

20chs 1/16 # 13

Type 9 Cultural Map

Remarks:

Little
Winnie
Lake

Original G.L.O. Corners

Com. Spec. D.b.h. Bear, DIST.

19/30				
30/29				
19/30	W. PINE	24	S 22 E	.90
30/29				
24/19	W. OAK	12	N 39 E	.20
25/30	B. OAK	40	S 76 W	.87
	N. PINE	6	S 30 E	.87
	" "		N 7 W	.44
25/30	N. PINE	20	S 20	0.06
25/30				
36/31				
30/31				
30/29	Birch	4	S 6 E	.14
31/32	ELM	4	S 49 W	.32
	Birch	4	N 54 W	.32
	" "		N 6 E	.47
30/29	N. PINE	14	S 4 E	.75
	" "	15	S 18 W	.70
Mc. 1	W. PINE	24	S 70	.90
	" "	5	S 16 E	1.00
Mc. 2	cedar	10	N 7 E	1.70
	" "		S 7 E	4.1
Mc. 3	cedar	14	S 2 E	.55
	" "	6	S 20 W	.72

w.a. - 1 not...

B.T.'s Found & W.T.'s Set

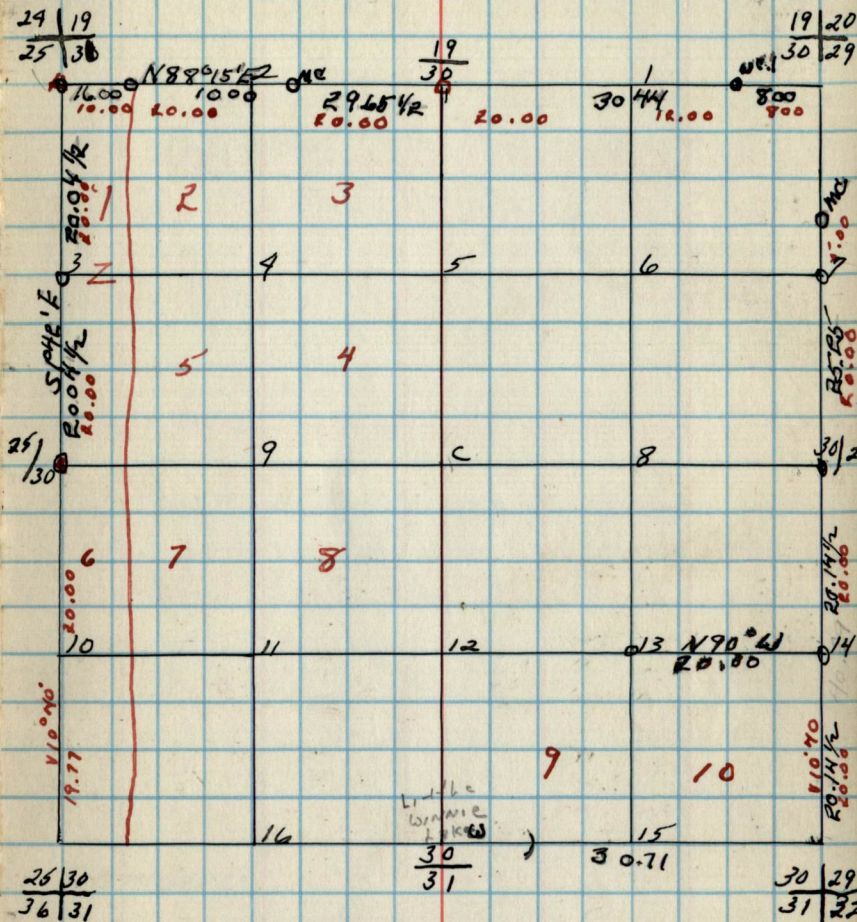
Com.	Spec.	D.b.h.	Bear	DIST.	B.T. W.T.
24/19	Red Oak	6"	S 60° W	53 1/2	Bt
25/30	N. PINE	20"	N 70° W	43 1/2	Bt
30/29	ASPEN	10"	S 17° 30' E	41 3/4	Bt
30/29	ELM	7"	S 68° W	25	Bt
31/32	Dead Birch	20"	S 7° E	14	Bt
	Spruce	24"	S 68° W	47	Bt
	Dead Elm	5"	N 58° W	32	Bt
	O. Birch	8"	N 7° E	47 1/2	Bt
	ELM Stump	9"	S 44° W	23 1/2	Bt
30/29	J. PINE	9"	S 60° W	43 1/2	Bt
	J. PINE	7"	S 36° E	.59	Bt
Mc. 1	Stump hole		S 26° 30' W	.90	Bt
	Mc post	5	scri bed good condition		Bt
25/30	oak	10"	S 68° 10' W		Bt
	oak	16"	S 70° 16' E		Bt

NW 30° B Oak 12" 15 ft

NW 10° R PINE 22" 44

Sec 30 T146N-R26W.

by-



B.T.'s & W.T.'s (CONT.)

Com. Spec. D.b.h. Bear. DIST. B.T. W.T.

Little
winch
hook30
31 30.7130/29
31/32

31.

Chairs

Notes

Chairs

31.

Type & Cultural Map

Remarks:

Original G.L.O. Counts

Cor. Spec. D.b.h. Bear. DIST.

30|29
31|32

100 ft
As 4171
Birch

4.25

340 E
454 E
468 E
475 E

4.5
4.6
4.7
4.7

30
31

25|30

34|31

36|31

36|31

1|6

31
6

31|32

6|5

Mo. 1

oak

18

560 E

4.76

Mo. 2

Cedar
Cedar

16

489 E
587 E

4.70
4.21

B.T.'s Found & W.T.'s Set.

Cor. Spec. D.b.h. Bear. DIST. B.T.W.T.

Sec. 31 T46N-R76W.
by-

25|30
36|31

2

30
31

lake

30.02

30|29
31|32

110.30
72.9.00
1

3

4

5

6

7

36|31

9

C

8

81
62

10

11

12

13

14

16

15

36|31
1|6

31
6

31|32
6|5

B.T.'s & W.T.'s (CONT.)

Cor. Spec. D.b.h. Bear. DIST. B.T.W.T.

Notes

Chains

Line S of 1/4 cor.

86/16/1

21 chs. Lakeshore

27 chs 86/16/1

40 chs e. 1/4 cor.

Lines bet. Sec. 31/32

27.15 chs Fire way

36 chs 02

40 chs 1/4 cor.

Mc

8 chs. 1/02

40 chs. 1/4 cor.

Line S of 1/16 #2

02

8 chs 86/16/1

8.64 chs. Fire way '46"

15.21 chs Highway

80/50

40 chs 1/16 #9

Line W. of 1/16 #5

80/16/1

17.21 chs. Highway '46"

20 chs 1/16 #4

Line W. of 1/16 #4

80/54/16

5.64 chs. Fireway

10 chs Mc

19 chs 1/02

20 chs 1/16 #3

Chains

Line W of C 1/4 cor.

80/16

5.70 chs Highway

80/50

20 23 chs. Fire way

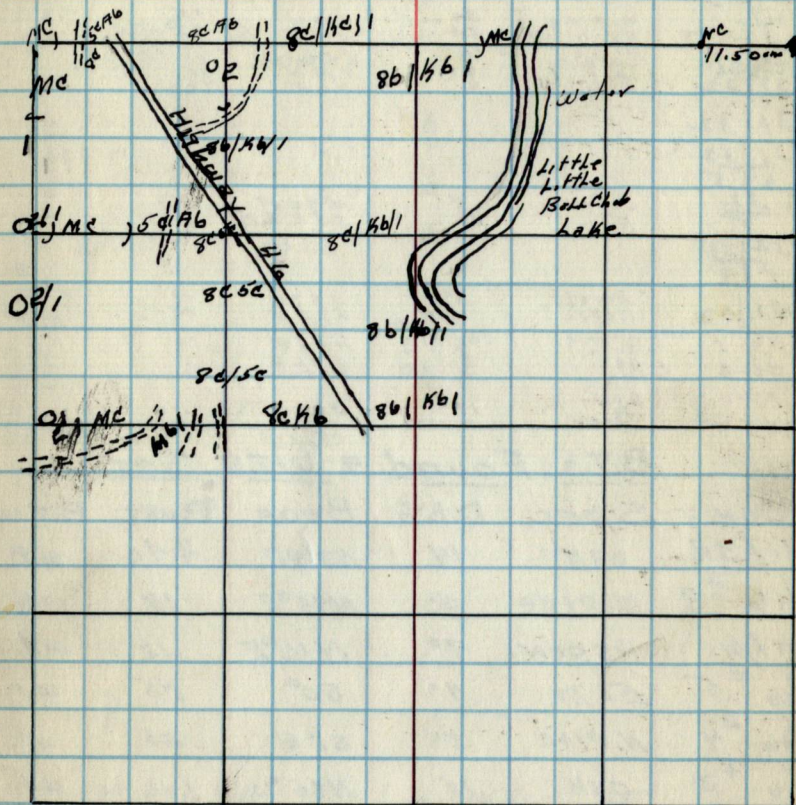
23 85 chs. Fireway

16/1

27.15 chs Fire way

36 chs 02

40 chs 1/4 cor.

Type + Cultural Map

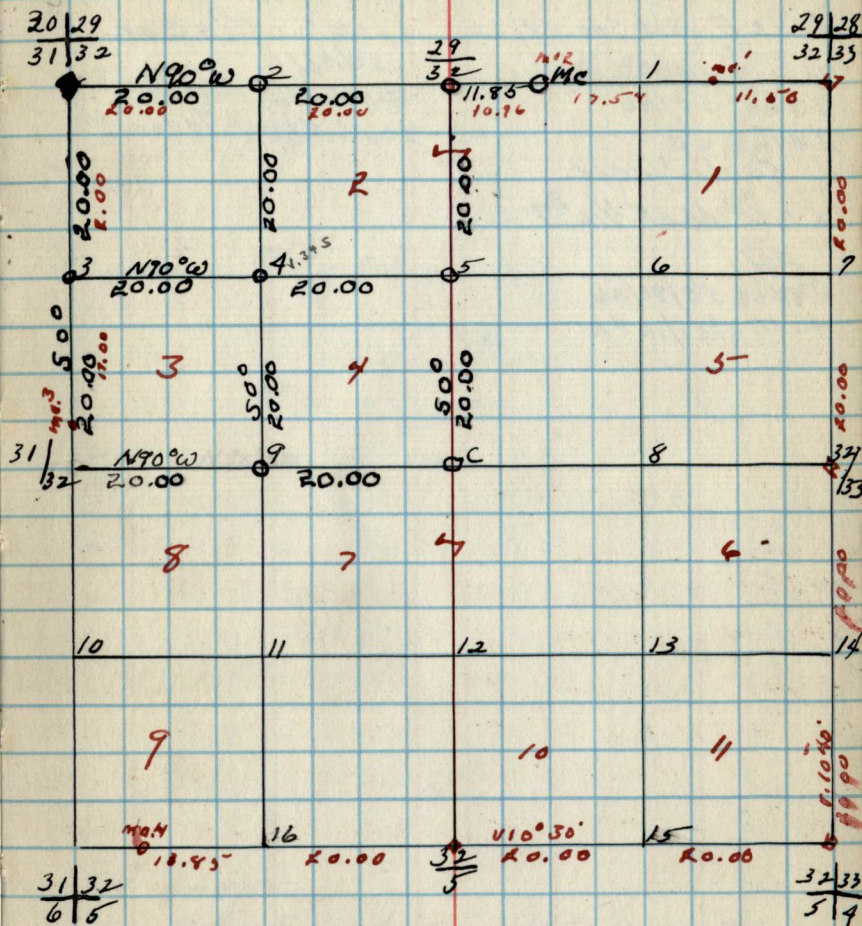
REMARKS:

Original G.L.O. Counts

Com.	Spec.	D.b.h.	Beam.	Dist.
29/28	J. PINE	12	N47°E	30
32/33	" "	12	N39°W	29
29	" "	12	N20°W	27
32	" "	12	N10°E	77
20/29	W. PINE	30	S10°W	70
31/32	" "	30	N10°E	77
	BIRCH	4	S5°E	20
	ELM	4	N39°W	20
	ASPL	4	N6°E	20
	BIRCH	4	N6°E	20
31/32				
31/32				
6/5				
32/5	J. PINE	8	N40°E	50
5/4	N. "	12	S32°E	56
32/33				
5/4				
32/33	BIRCH	5	S39°E	25
	ASPEN	4	S78°E	25
HC-1	SWALLOW	26	S21°E	24
HC-2	OAK	5	N74°E	20
	ELM		S46°W	20
HC-3	OAK	17	S60°E	4.76
HC-4	ASLOW	2	N72°E	7.76

B.T.'s Found & W.T.'s Set

Com.	Spec.	D.b.h.	Beam.	Dist.	B.T. W.T.
31/32	OAK	14	N86°E	4.40	w.t.
1/16 #9	N. PINE	8"	N44°E	14	w.t.
C1/4	ASPEN	7"	N16°E	.12	w.t.
1/16 #5	ELM	4"	S0°	.45	w.t.
1/16 #4	N. PINE	8"	S1°E	.05	w.t.
1/16 #3	OAK	10"	N85°W	1.06	w.t.

Sec. 32 T146N-R26W
by - Haberle

B.T.'s & W.T.'s (CONT)

Com.	Spec.	D.b.h.	Beam.	Dist.	B.T. W.T.
------	-------	--------	-------	-------	-----------

NOTESCHAINS

Line E Bet. Sec. 28/33

5c
40 chs B6/36
80 chs 5c/A6

20 chs 5c

40.50 chs 1/4 cor

Line N. of 1/16 #9

A6/1

28 chs 5c/8c/A6

40.12 chs 1/16 #2

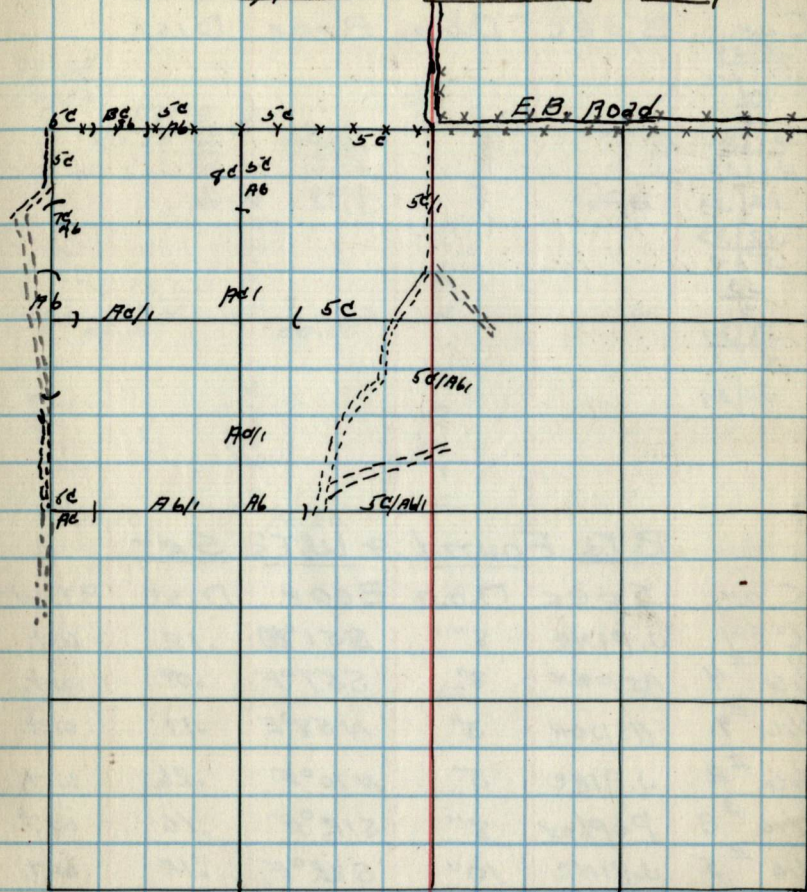
CHAINS

Line S. of 1/4 cor.

5c/A6/1

34.80 chs Fireway

40.26 chs 1/4 cor.

Type & Cultural MapREMARKS:

No B.t.s Found For 1/4 Cor. 32-33
Marker By Fireway used AS CORNER.

Original G.L.O. Corners
 Com. Spec. D.b.h. Bear. Dist.

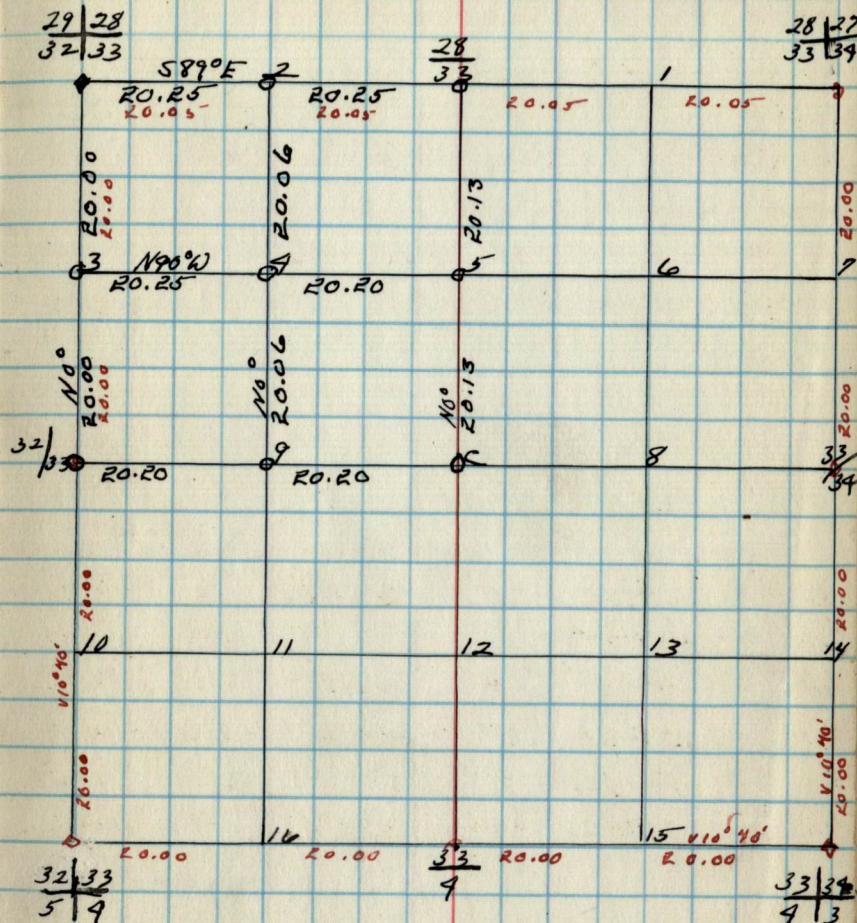
28|27
 33|39
 28
 33
 29|28
 32|33
 32|33
 5|4
 33
 7
 33|39
 9|3
 33|39

J. PINE	16	547E	36
N. " "	10	537E	36
J. " "	12	539E	30
		N70W	167
Aspen	5	559E	11
		512E	33

B.T.'s Found & W.T.'s Set

Com.	Spec.	D.b.h.	Bear.	Dist.	B.T. WT
C 1/4	J. PINE	8"	851°E	.12	wt.
1/16 #4	Aspen	8"	559°E	.09	wt.
1/16 #9	Aspen	3"	N58°E	.17	w.t.
1/16 #2	J. PINE	5"	N70°E	.26	w.t.
1/16 #3	Poplar	8"	512°E	.16	w.t.
1/16 #5	J. PINE	10"	522°E	.14	w.t.

Sec. 33 T146N-R26W
 by Haberle



B.T.'s & W.T.'s (CONT.)

Com. Spec. D.b.h. Bear. Dist. B.T. WT.

Notes

Chains

Chains

Type & Cultural Map

Remarks:

34,

Original G.L.O. Corners
 Spec. D.b.h. Bear. Dist.

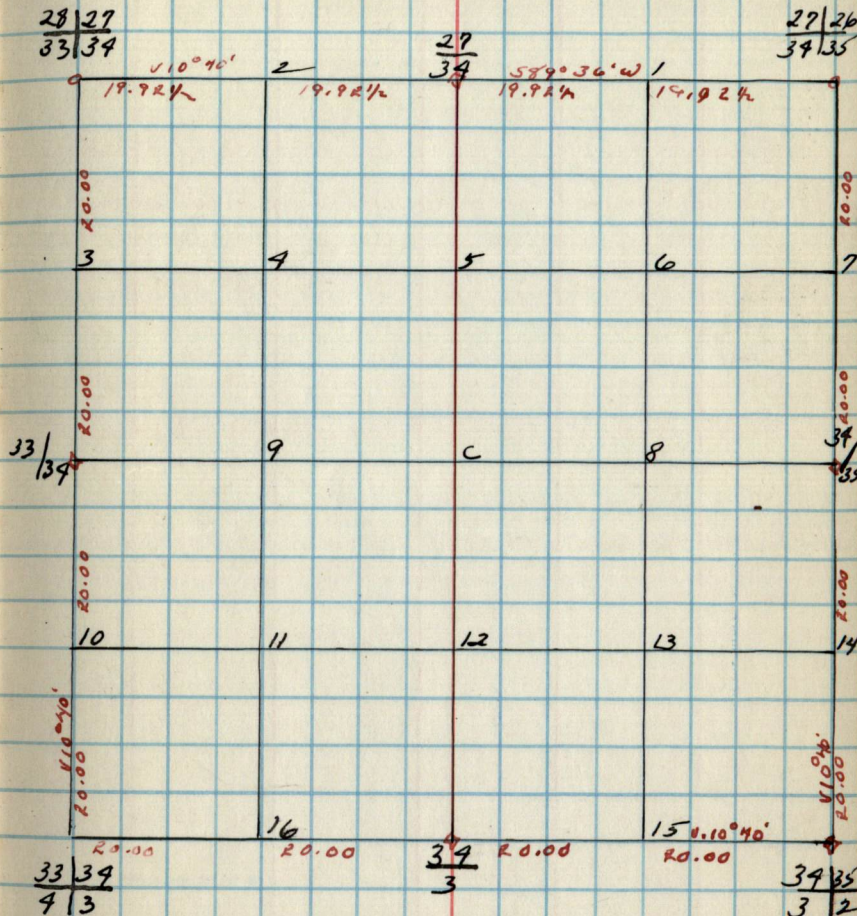
Com.
 27|26
 34|35
 27
 34
 28|27
 33|34
 33|34
 33|34
 9|3
 34
 3
 34|35
 3|2
 34|35

B.T.s Found & W.T.s Set.

Com. Spec. D.b.h. Bear. Dist. B.T. W.T.

34

Sec. 34 - T146N - R26W.
 by -



B.T.s & W.T.s (CONT.)

Com. Spec. D.b.h. Bear. Dist. B.T. W.T.

35.

NOTES

CHAIRTS

CHAIRTS

35.

Type & Cultural Map

REMARKS:

Original G.L.O. Corners

C Com. Spec. D.b.h. Beam. Dist.

26 | 35

35 | 36

26

35

27 | 26

34 | 35

34 | 35

34 | 35

3 | 2

35

2

35 | 36

2 | 1

35 | 36

to "

6

S10 E
S10 W42
60B.T.'s Found & W.T.'s Set.

Com. Spec. D.b.h. Beam. Dist. B.T. W.T.

Sec. 35 T146 N- R26 W
by -

27 | 26

34 | 35

26

35

20.00

20.00

20.00

20.00

20.00

20.00

20.00

20.00

20.00

20.00

20.00

20.00

20.00

20.00

20.00

20.00

20.00

20.00

20.00

20.00

20.00

20.00

20.00

20.00

20.00

20.00

20.00

20.00

20.00

20.00

20.00

20.00

20.00

20.00

20.00

20.00

20.00

20.00

20.00

20.00

20.00

20.00

20.00

20.00

20.00

20.00

20.00

20.00

20.00

20.00

26 | 25

35 | 36

B.T.'s & W.T.'s (CONT.)

Com. Spec. D.b.h. Beam. Dist. B.T. W.T.

34 | 35

3 | 2

35

2

20.00

20.00

20.00

20.00

20.00

20.00

20.00

20.00

20.00

20.00

20.00

20.00

20.00

20.00

20.00

20.00

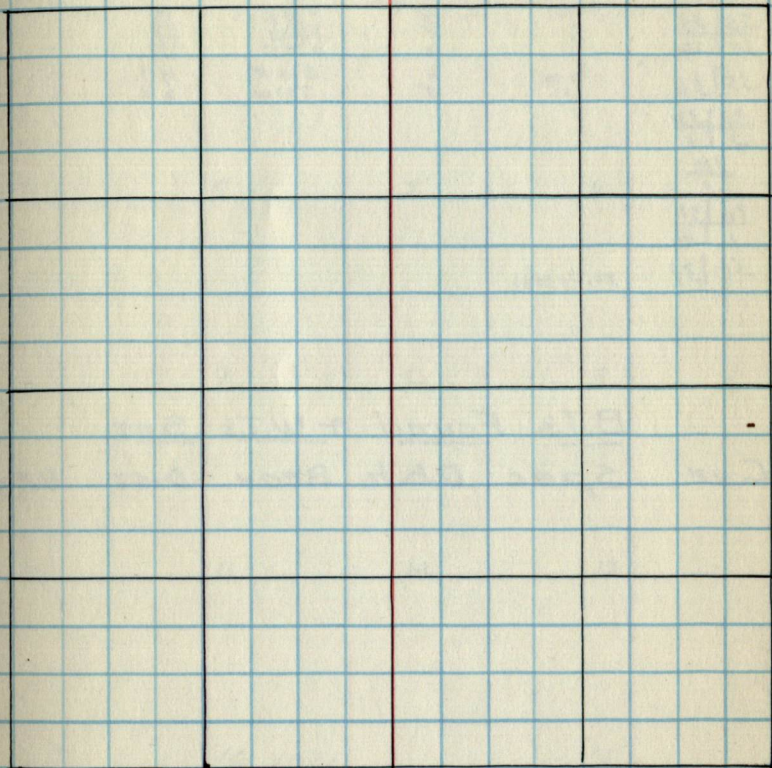
35 | 36

2 | 1

CHAINS

NOTES

CHAINS

Type & Cultural Map

REMARKS:

36.

Original G.L.O. Corners

Cor.	Spec.	Db.h.	Bear.	Dist.
25 30	top	18	N39E	37
36 31	top	18	N66W	86
32	top	65	S66E	100
36	top	55	N34W	19
36 35	top	55	S31E	39
35 36	top	6	N20E	10
35 36	top	6	S32W	28
35 36	top	6	S31W	42
35 36	top	6	N76W	18
35 36	top	6	S10E	47
35 36	top	6	S10E	60

35|36

211

36

1

36|31

116

36|31

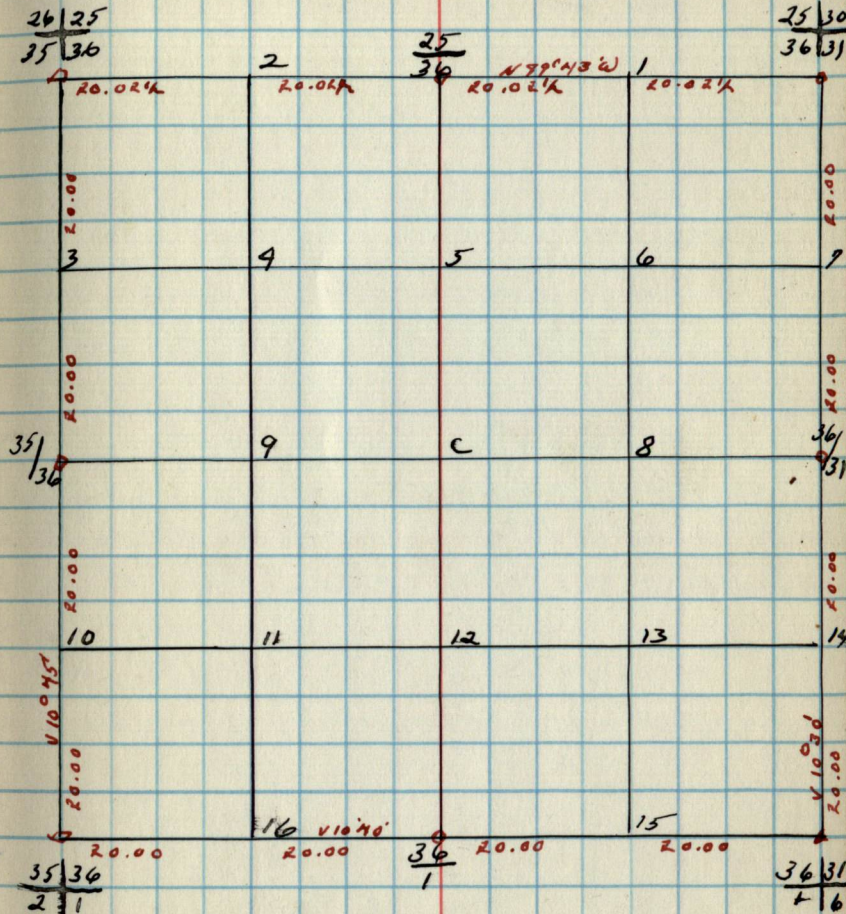
No. trees

B.T.'s Found & W.T.'s Set.

Cor.	Spec.	Db.h.	Bear.	Dist.	B.T. W.T.
------	-------	-------	-------	-------	-----------

36.

Sec. 36 T146N-R26W

B.T.'s & W.T.'s (CONT.)

Cor.	Spec.	Db.h.	Bear.	Dist.	B.T. W.T.
------	-------	-------	-------	-------	-----------

Pg 37 - End
are Blank