

T145N. R.30W.

DILLON
MINING

MINING
TRANSFER BOOK

No. 4921

ccc 19

EUGENE DIETZGEN CO.

DRAWING MATERIALS, MATHEMATICAL and
SURVEYING INSTRUMENTS

Chicago New York San Francisco New Orleans Pittsburg Toronto

Distances from Center of Roadway for Cross-Sectioning
Roadway 16 feet wide. Side Slopes 1 on 1.
For Single Track Embankment.

H	0	.1	.2	.3	.4	.5	.6	.7	.8	.9	H
0	8.0	8.1	8.2	8.3	8.4	8.5	8.6	8.7	8.8	8.9	0
1	9.0	9.1	9.2	9.3	9.4	9.5	9.6	9.7	9.8	9.9	1
2	10.0	10.1	10.2	10.3	10.4	10.5	10.6	10.7	10.8	10.9	2
3	11.0	11.1	11.2	11.3	11.4	11.5	11.6	11.7	11.8	11.9	3
4	12.0	12.1	12.2	12.3	12.4	12.5	12.6	12.7	12.8	12.9	4
5	13.0	13.1	13.2	13.3	13.4	13.5	13.6	13.7	13.8	13.9	5
6	14.0	14.1	14.2	14.3	14.4	14.5	14.6	14.7	14.8	14.9	6
7	15.0	15.1	15.2	15.3	15.4	15.5	15.6	15.7	15.8	15.9	7
8	16.0	16.1	16.2	16.3	16.4	16.5	16.6	16.7	16.8	16.9	8
9	17.0	17.1	17.2	17.3	17.4	17.5	17.6	17.7	17.8	17.9	9
10	18.0	18.1	18.2	18.3	18.4	18.5	18.6	18.7	18.8	18.9	10
11	19.0	19.1	19.2	19.3	19.4	19.5	19.6	19.7	19.8	19.9	11
12	20.0	20.1	20.2	20.3	20.4	20.5	20.6	20.7	20.8	20.9	12
13	21.0	21.1	21.2	21.3	21.4	21.5	21.6	21.7	21.8	21.9	13
14	22.0	22.1	22.2	22.3	22.4	22.5	22.6	22.7	22.8	22.9	14
15	23.0	23.1	23.2	23.3	23.4	23.5	23.6	23.7	23.8	23.9	15
16	24.0	24.1	24.2	24.3	24.4	24.5	24.6	24.7	24.8	24.9	16
17	25.0	25.1	25.2	25.3	25.4	25.5	25.6	25.7	25.8	25.9	17
18	26.0	26.1	26.2	26.3	26.4	26.5	26.6	26.7	26.8	26.9	18
19	27.0	27.1	27.2	27.3	27.4	27.5	27.6	27.7	27.8	27.9	19
20	28.0	28.1	28.2	28.3	28.4	28.5	28.6	28.7	28.8	28.9	20
21	29.0	29.1	29.2	29.3	29.4	29.5	29.6	29.7	29.8	29.9	21
22	30.0	30.1	30.2	30.3	30.4	30.5	30.6	30.7	30.8	30.9	22
23	31.0	31.1	31.2	31.3	31.4	31.5	31.6	31.7	31.8	31.9	23
24	32.0	32.1	32.2	32.3	32.4	32.5	32.6	32.7	32.8	32.9	24
25	33.0	33.1	33.2	33.3	33.4	33.5	33.6	33.7	33.8	33.9	25
26	34.0	34.1	34.2	34.3	34.4	34.5	34.6	34.7	34.8	34.9	26
27	35.0	35.1	35.2	35.3	35.4	35.5	35.6	35.7	35.8	35.9	27
28	36.0	36.1	36.2	36.3	36.4	36.5	36.6	36.7	36.8	36.9	28
29	37.0	37.1	37.2	37.3	37.4	37.5	37.6	37.7	37.8	37.9	29
30	38.0	38.1	38.2	38.3	38.4	38.5	38.6	38.7	38.8	38.9	30
31	39.0	39.1	39.2	39.3	39.4	39.5	39.6	39.7	39.8	39.9	31
32	40.0	40.1	40.2	40.3	40.4	40.5	40.6	40.7	40.8	40.9	32
33	41.0	41.1	41.2	41.3	41.4	41.5	41.6	41.7	41.8	41.9	33
34	42.0	42.1	42.2	42.3	42.4	42.5	42.6	42.7	42.8	42.9	34
35	43.0	43.1	43.2	43.3	43.4	43.5	43.6	43.7	43.8	43.9	35
36	44.0	44.1	44.2	44.3	44.4	44.5	44.6	44.7	44.8	44.9	36
37	45.0	45.1	45.2	45.3	45.4	45.5	45.6	45.7	45.8	45.9	37
38	46.0	46.1	46.2	46.3	46.4	46.5	46.6	46.7	46.8	46.9	38
39	47.0	47.1	47.2	47.3	47.4	47.5	47.6	47.7	47.8	47.9	39
40	48.0	48.1	48.2	48.3	48.4	48.5	48.6	48.7	48.8	48.9	40

Example—If point is 22.6 ft. above grade, how far should it be from center line to be a slope stake point? Ans. from Table 30.6. For same slopes but other widths of roadbed, correct above figures by one-half difference in width of roadbed; thus in example above, for 20 ft. roadbed distance will be $30.6 + (20 - 16) \div 2$ or 2 ft. added to $30.6 = 32.6$. For slopes of 1 on $1\frac{1}{2}$ see inside of back cover.

Copyright, 1914, by Eugene Dietzgen Co.

The paper stock of this book is made of a high grade 50% rag paper having a water resisting surface and is sewed with Bing Special Enamel Waterproof Thread.

Made in U. S. A.

145 - 30

Scanned

July 25, 2012

Fisher

T. 145 N. R. 30 W.

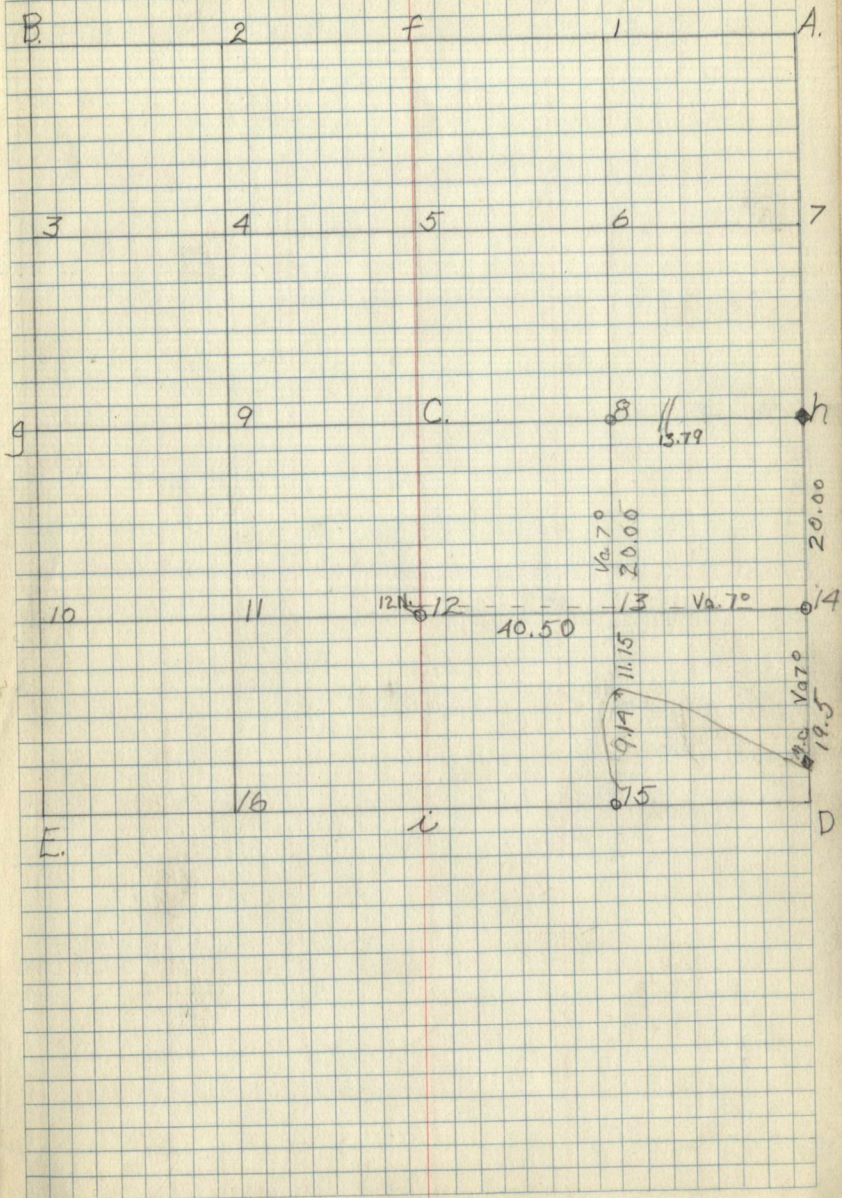
Index

Sec.	Page
1	1-2
2	3
3	4-5
4	5-6
5	7-8
6	9-10
7	11-12
8	13-14
9	15-16
10	17-18
11	19-20
12	21-22
13	23-24
14	25-26
15	27-28
16	29-30
17	31-32
18	33-34
19	35-36
20	37-38
21	39-40
22	41-42
23	43-44
24	45-46
25	47-48
26	49-50
27	51-52
28	53-54
29	55-56
30	57-58
31	59-60
32	61-62
33	63-64
34	65-66
35	67-68
36	69-70
37	71-72
38	73-74

Corner Notes

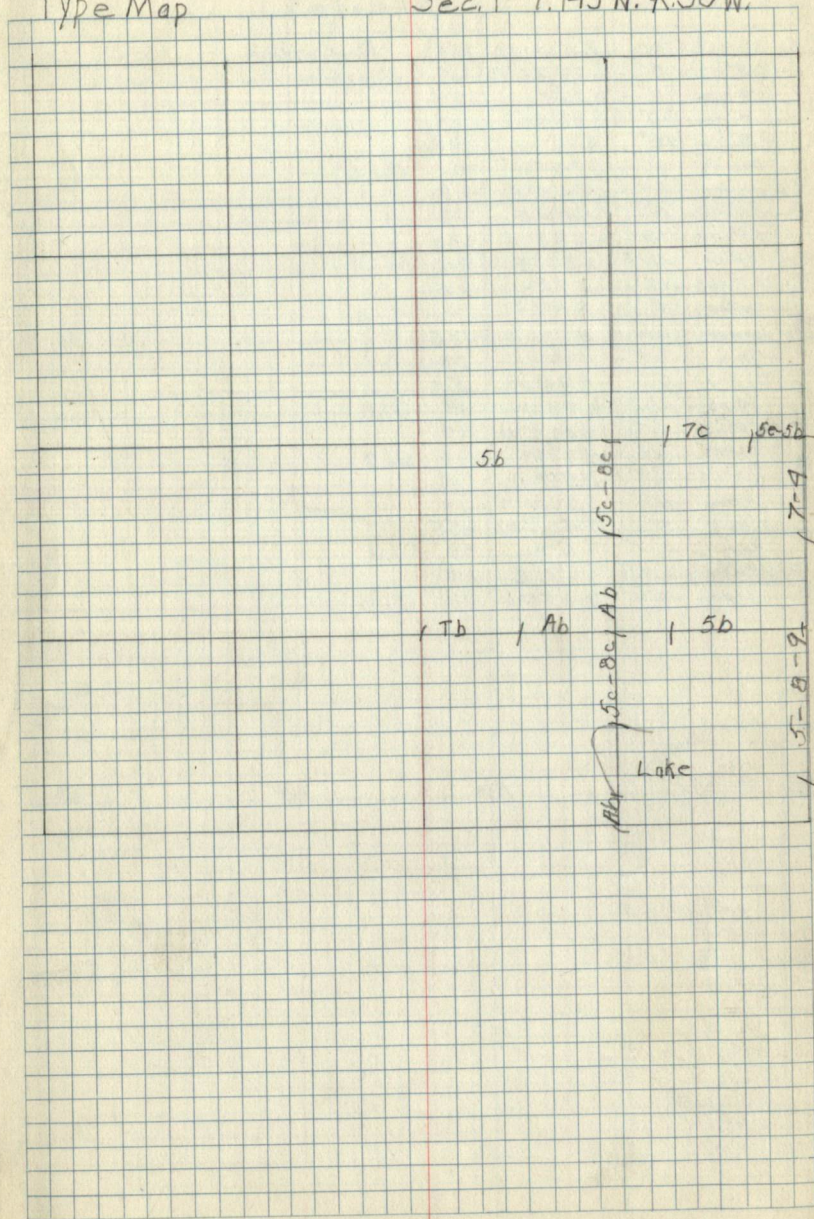
Cor. Spec. Dia.	Bearing	Dist.	Remarks
-----------------	---------	-------	---------

Sec. 1 - T145N. R. 30W.



Type Map

Sec. 1 - T. 145 N. R. 30 W.

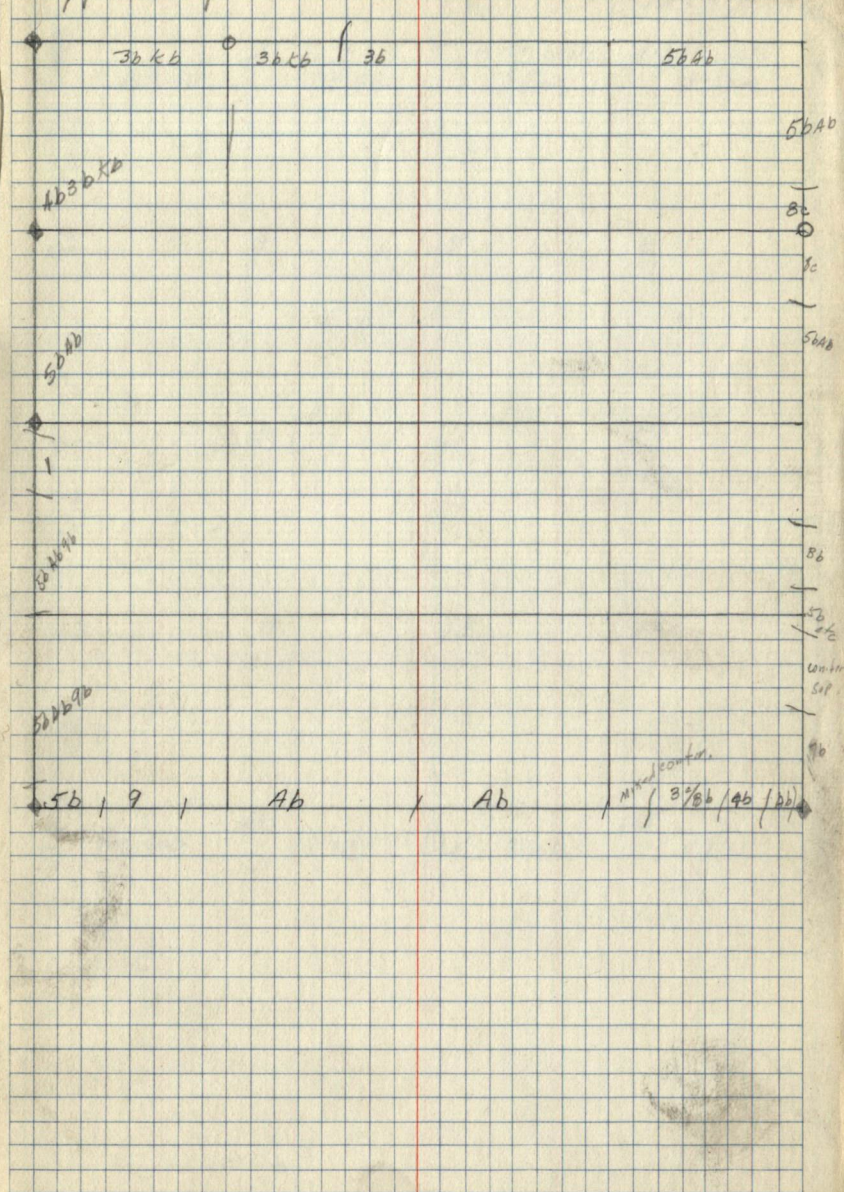


Corner Notes

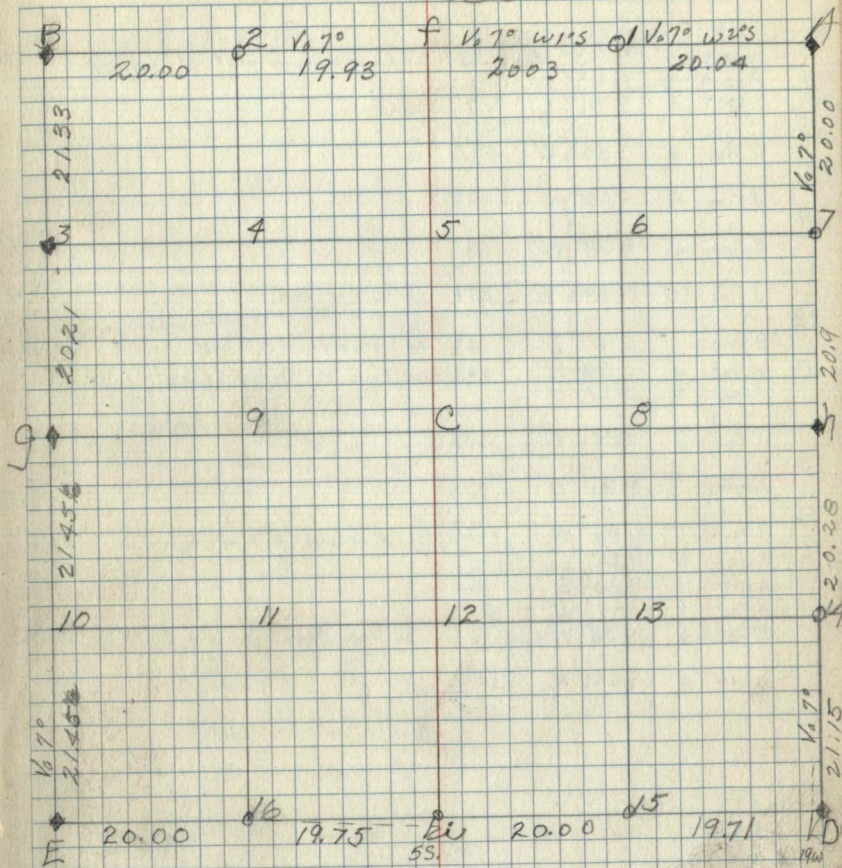
Cor.	Spec.	Dia.	Bearing	dist.	Remarks
E.	J. Pine	5"	S. 56° 20' W.	3.5	GLO
	R. Pine	18"	N. 32° E.	223	
	R. Pine	20"	S. 80° 30' E.	264	
	R. Pine	18"	N. 39° W.	388	
A	Aspen	4"	S 30° 5' W	42	GLO
	J. Pine	8"	S 6.5° E	69	
	J. Pine	8"	N 80° E	228	
	J. Pine	10"	N 83° W	333	
h	R. Pine	12"	S 80° E	94	GLO
	W. Pine	12"	N 78° W	38	
	Cedar	5"	S 10.5° E	16	GLO
D.	Cedar	6.5"	N 67.5° E	17.5	
	Tam.	9.5"	N 30° W	33	
	Cedar	5"	S 48° W	5	
	J. Pine	12"	S 88° W	113	GLO
f	J. Pine	6"	N 47.5° W	102	
	Aspen	6"	N 23° E	105	GLO
B	R. Oak	6"	N 52° W	114	
	Aspen	11"	S 22.5° E	19	
	R. Oak	5"	S 46.5° W	65.5	
	Ash	4"	S 8° W	38	GLO
g	W. Pine	6" x 5"	S 67° E	15	
	Aspen	3"	S 65° W	13	GLO
3.					

Type Map

Sec. 2 - T. 145 N. R. 30 W.



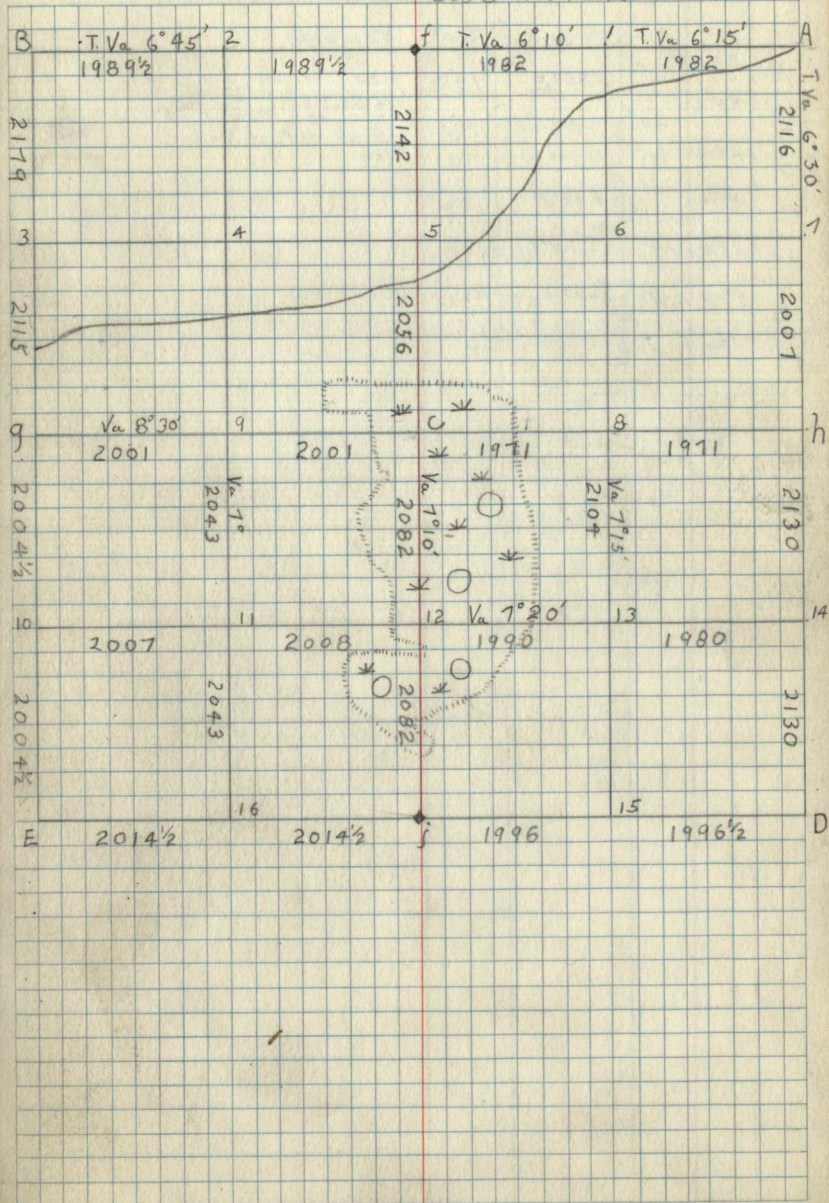
Sec. 2 - T. 145N. R. 30W.



Corner Notes

Cor	SP	Diam	Bear no	Dist	Remarks
f	W. Oak	6"	S 33° W	33	Br. Capped iron pipe 1" 10" high
	Aspen	4"	N 63° W	6	
	Aspen	4"	S 81° E	17	
5	R. Pine	16"	S 86½° W	472	
C	R. Pine	16"	S 86½° W	472	
9	J. Pine	4"	S 50° W	49½	
	R. Pine	3"	S 38° W	9	
11	J. Pine	10"	N 89½° W	277	On ¼ Line West
12	R. Pine		S 67° E	14½	Br. Iron pipe 1" 10" high
h	W. Oak	5"	S 90° E	16½	Old Box. Bt Burnt Stump
	Aspen	6"	S 52° E		
	J. Pine	7"	S 85½° W	58½	
8	Aspens	3"	N 75° W	73½	
13	R. Oak	6"	N 52° W	113½	6LO Cement 6" X 4" high
A	Aspen	6"	N 24° E	110	
	Aspen	9"	S 23½° E	18	
	R. Oak	6"	S 47° W	65	
	R. Oak	5"	N 38° W	9	¼ Oak Post
1	Aspen	6"	S 64½° W	12¾	
7					

Sec 3-T 145 N, R 30 W



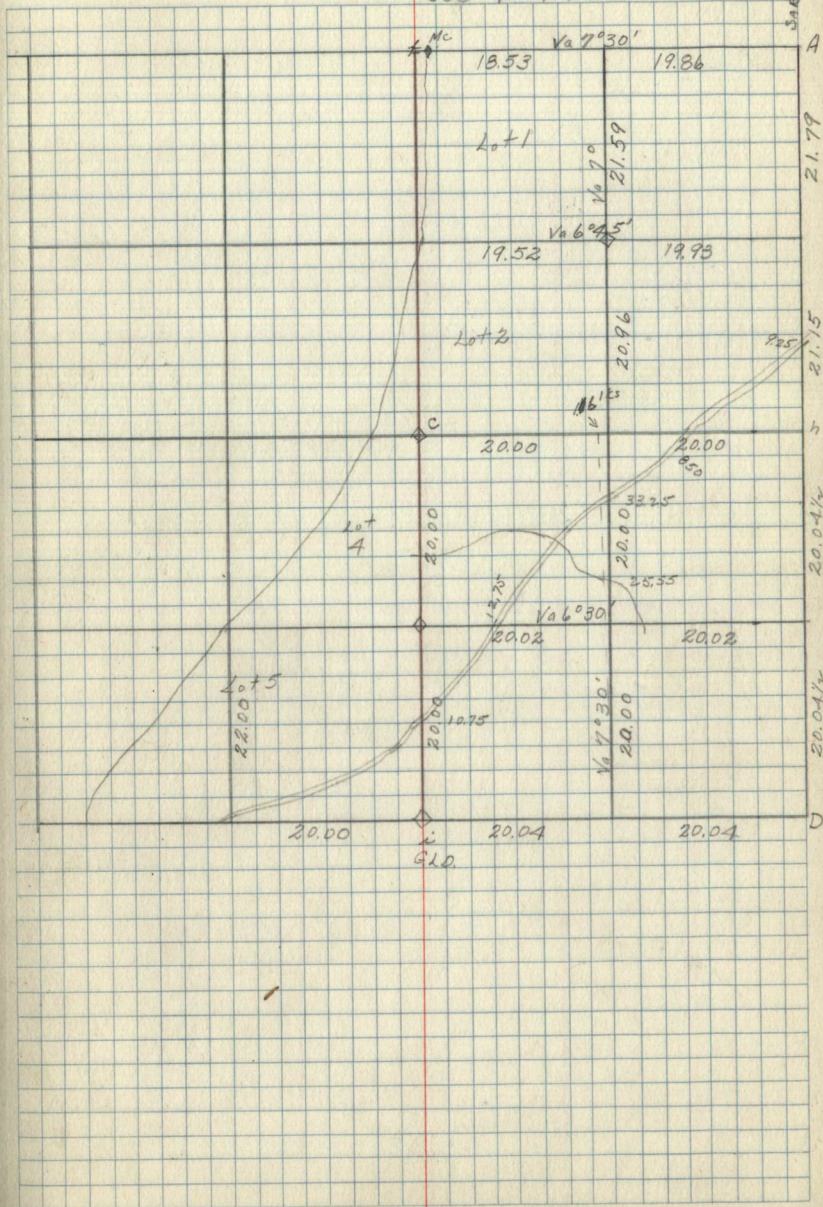
Corner Notes

Cor	Sp	Dia	Bearing	Dist	Remarks
1	R. Oak	6"	N 85° E	13 1/4	Mkd 6-1-34
Mc at f	R Pine	20"	N 89 1/2° E	7.17	old Govt BT Coped Iron Pipe 2"-8" high 38.66 West of Sec Cor. 123 127
8	d Pine	12"	N 70° W	9 1/2	Mkd
C	N Pine		S 63° E	8 1/2	
12	d Pine	9"	S 63° E	20	
13	d Pine	6"	S 55° E	4 3/4	
15	d Pine	6"	N 30° E	6	

J. H. Gjelhaug

Dec. 5-6-7 1933

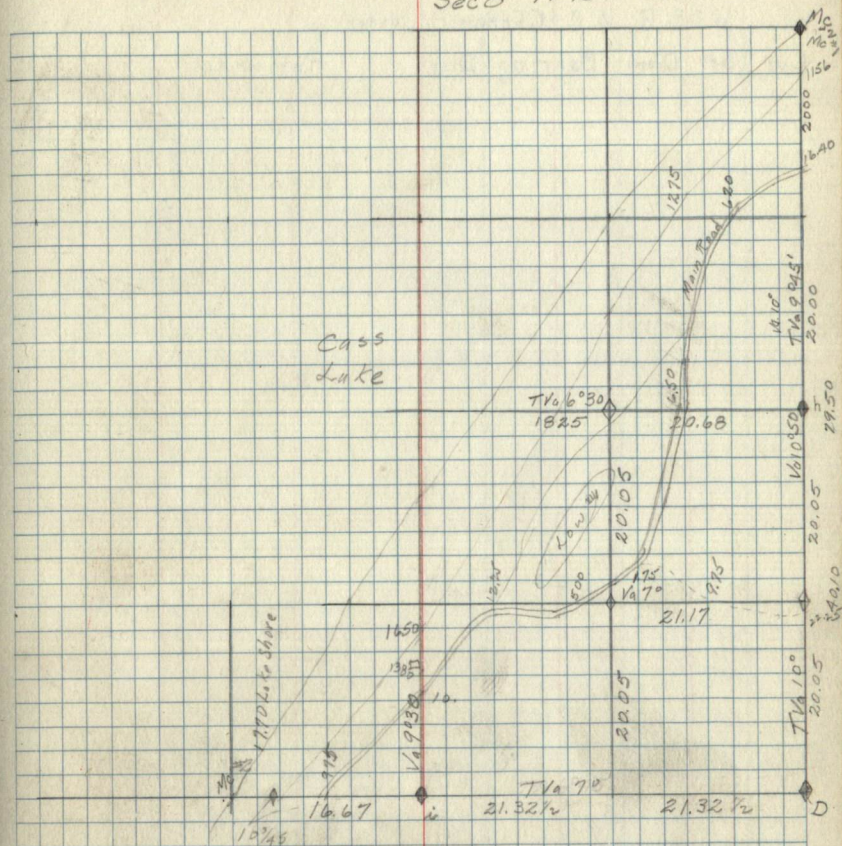
Sec 4 T145N R30W



Corner Notes

Cor.	Sp	Dia	Bearing	Dist	Remarks
Mc 1 at A					
Mc 2 at A	RPine	16"	N 52° 30' E	52 3/4	G.L.O. 5" cement
	RPine	18"	S 23 1/4° E	53	
7	JPine	12"	S 37° W	13	Mkd
	JPine	6"	N 35° W	9 3/4	G.L.O.
h	JPine	6"	N 89° E	7 1/4	
	JPine	5"	S 83° E	6 1/4	Mkd
8					
13	RPine	16"	S 50° W	10	
14	Birch	5"	N 85° W	3 1/4	Mkd
D	RPine	14"	S 79 1/2° W	39.1	
	RPine	14"	S 81° E	94.5	
	RPine	14"	N 46° 30' W	74.2	
	RPine	10"	N 77° E	75 1/2	
15	RPine	20"	N 74° E	42 3/4	Mkd
	WPine	6"	N 32 1/2° W	36 1/4	
	WPine	20"	South	75 1/4	G.L.O.
Mc #2	Ash	6"	N 20° E	65	
	Ash	6"	S 45° W	78 1/2	G.L.O.

13
Sec B T145N R30W



Cont. B.T.
at D. See Cor. 8-9-16-17

Birch 3" S 27° E 40
" 3" S 17 1/2° W 65
" 4" N 18° E 80

at i 1/2 Cor. Betw. 8-17

y Pine 20" S 7° W 7
y Pine 20" N 4° W 20

Mc #2 bet 8-17

W. Pine 24" S 7° W 32
B Pine 4" N 31° E 20

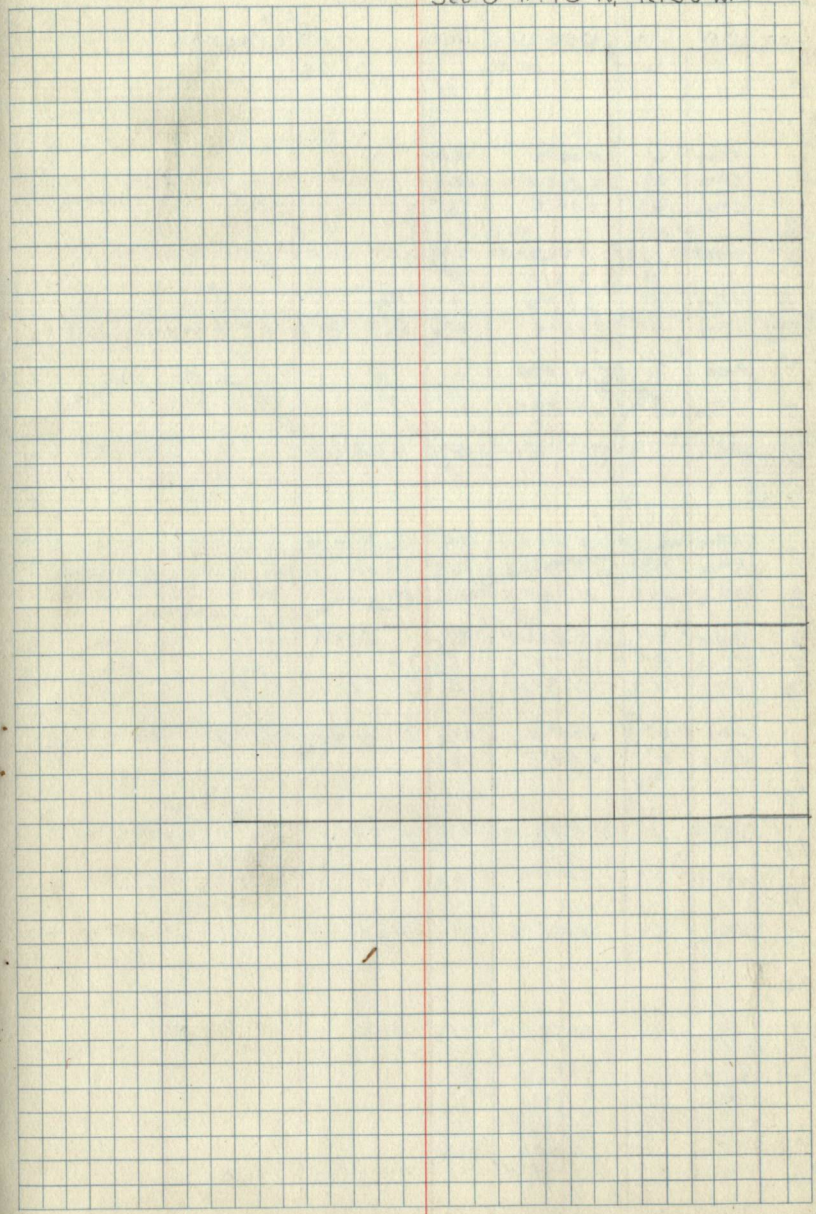
at h. 1/2 cor. betw 8-9

B. Pine 10" N 72° W 8
" 10" N 52° E 33

Mc #1 betw 8-9

Br Oak 10" N 50° E 29
Aspen 8" S 21° W 5

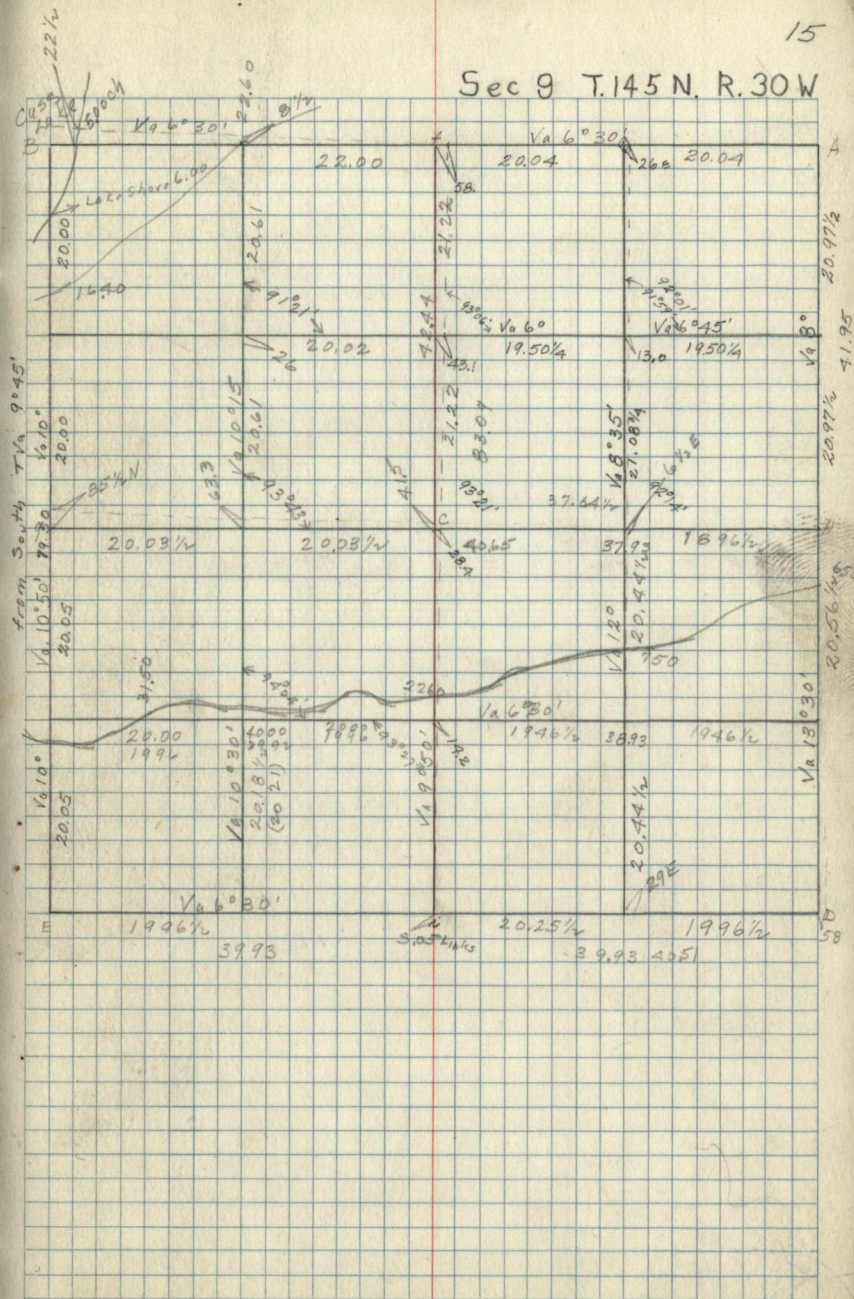
Corner				Notes	Remarks
Cor	SP	Diam	Bearing	Dist	

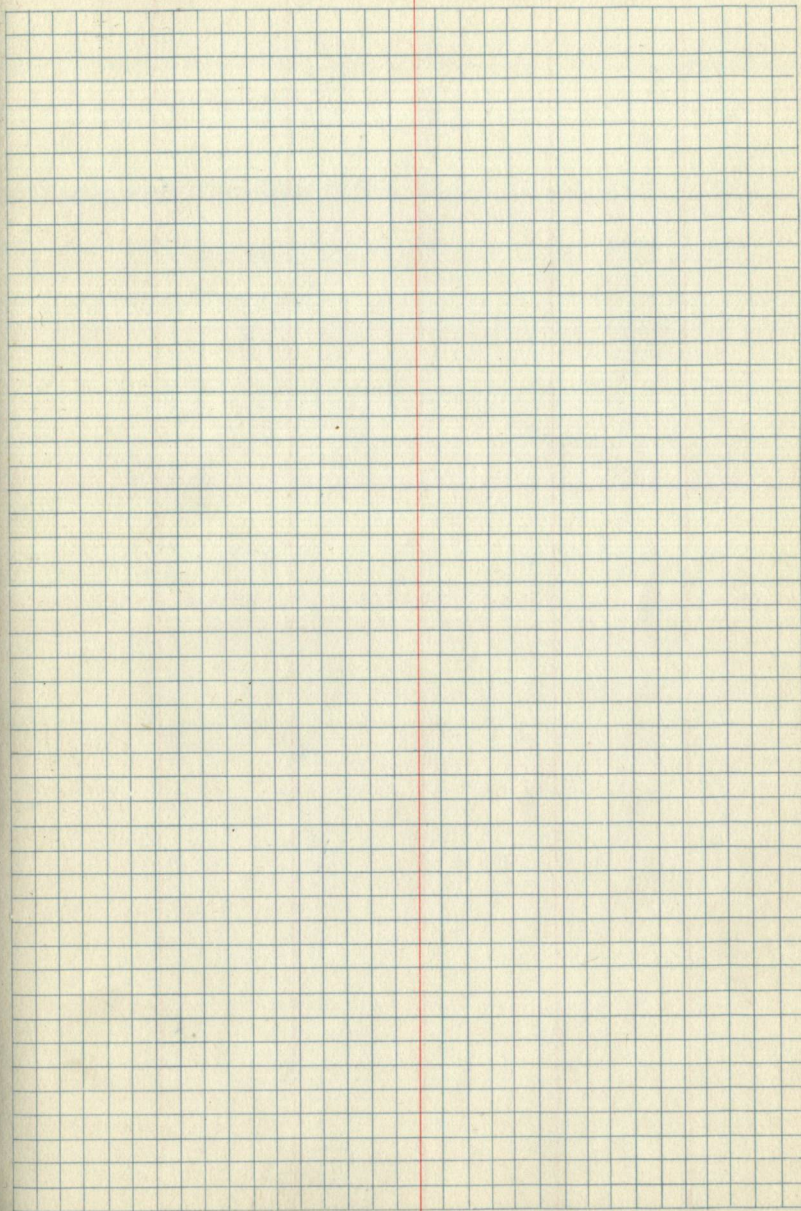


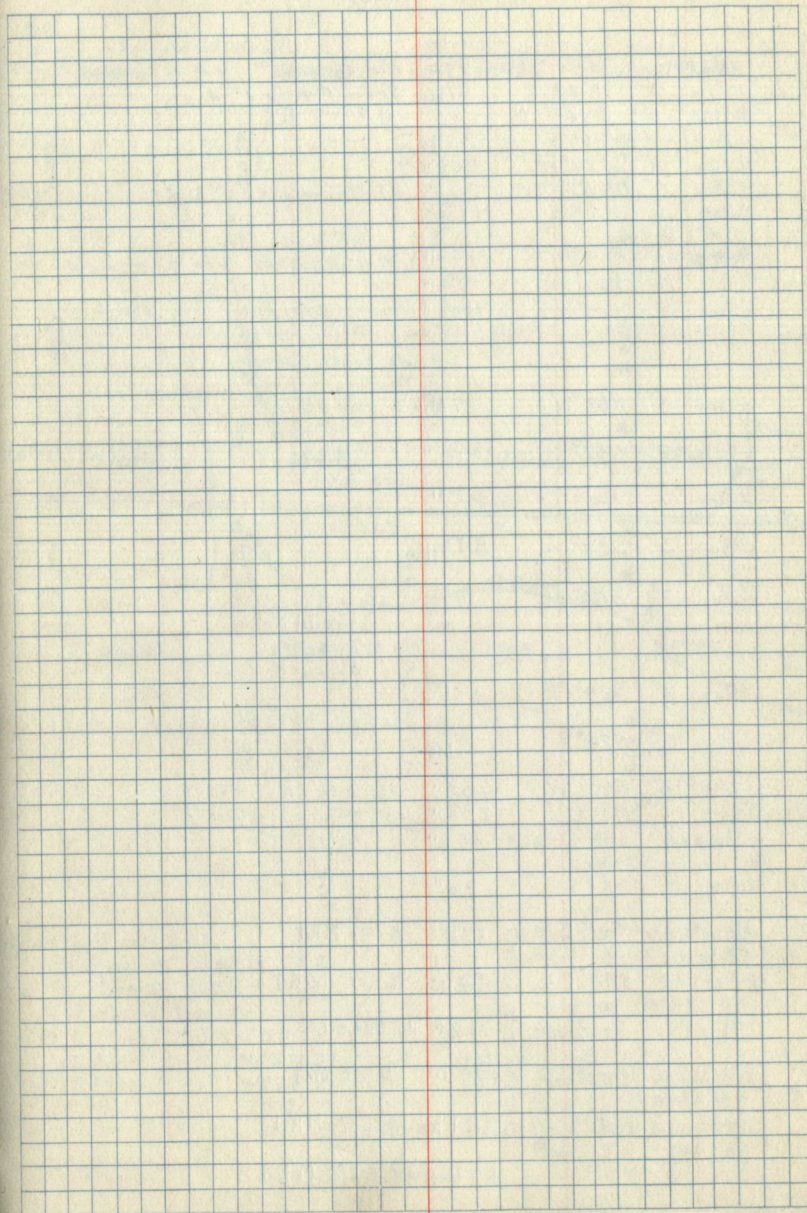
Corner Notes

Cor.	Sp.	Dia.	Bearing	Dist.	Remarks
A					
1					
f	RPine	6"	N 14° W	12.5	
	RPine	6"	S 26° W	12.6	
2	JPine	6"	S 33° E	11	
MC at	Br Oak	10"	N 50° E	29	
B	Aspen	8"	S 21° W	5	
3	JPine	12"	S 37° W	13	Mkd.
MC at	JPine	4"	N 7° E	5 1/4	G.L.O. Bt for MC. 8.44 North of 3
4	Birch	4"	N 15° W	6	
5	JPine	6"	S 63° W	11	Mkd
6	JPine	6"	S 46° W	5 1/4	Mkd
7					
h	JPine	4"	N 79° W	44	G.L.O. Pipe
	NPine	12	S 37° E	164	No cor inters. Tang + line west.
8	JPine	4"	N 20° E	5 1/2	Mkd
C	Aspen	10"	S 64° W	8	
	JPine	8"	S 70° E	3 1/3	
9	JPine	4"	N 3° E	12	Mkd
g	JPine	6"	N 35° W	9 3/4	G.L.O. Bt.
	JPine	6"	N 89° E	78 1/2	
10					
11	JPine	6	N 30° E	4 1/2	Mkd
12	JPine	6"	N 47° E	13 1/2	Mkd
13	JPine	6"	N 45° E	11	Mkd
14					
15	JPine	2 1/2"	N 43° E	11 1/2	Mkd
D	RPine	30"	N 43° W	27	
	RPine	6"	S 38° E	130	
	YPine	30"	S 39° E	11	
	YPine	24	N 45° W	50	
i	RPine	18"	S 52° W	104	
	RPine	4"	N 7° E	6 1/4	
16	TAm	5"	S 75° E	42	Birch Post Mkd.
E	Birch	3"	S 7° E	40	
	Birch	3"	S 17° W	65	
	Birch	4"	N 16° E	80	

Sec 9 T.145 N. R.30 W



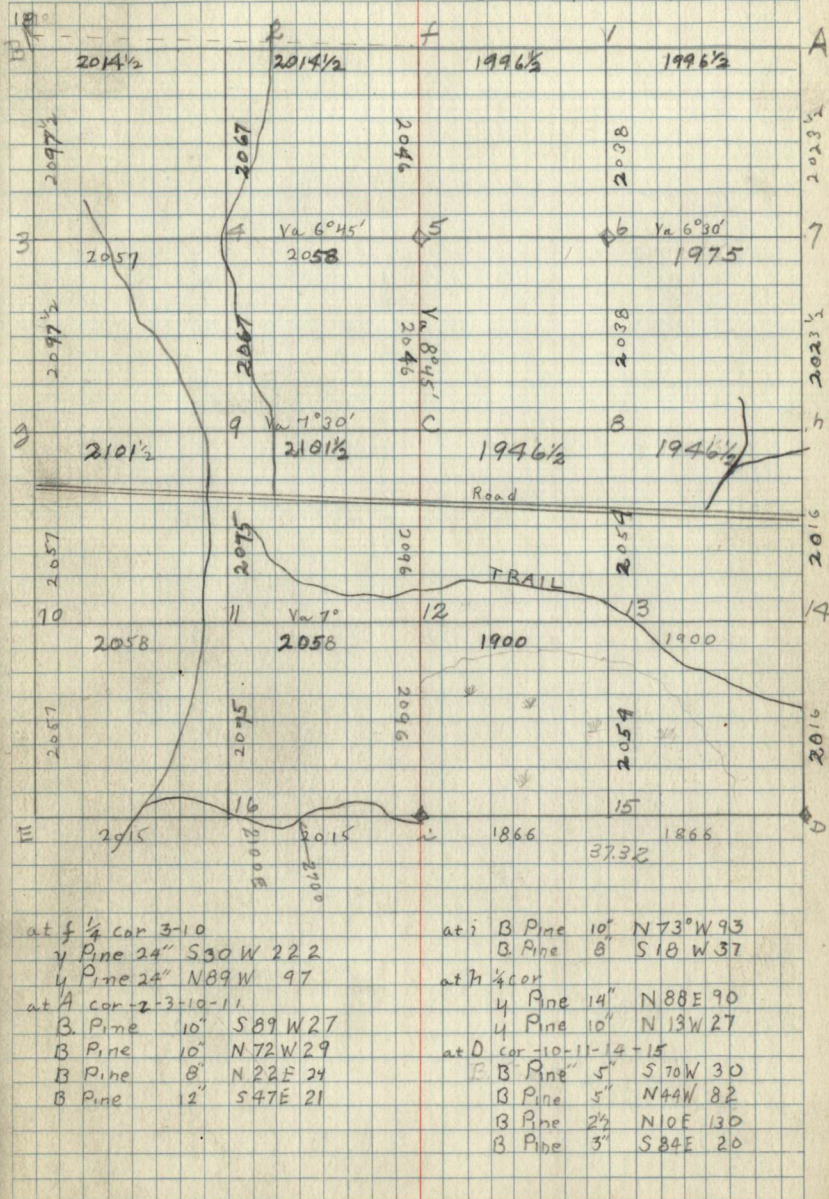


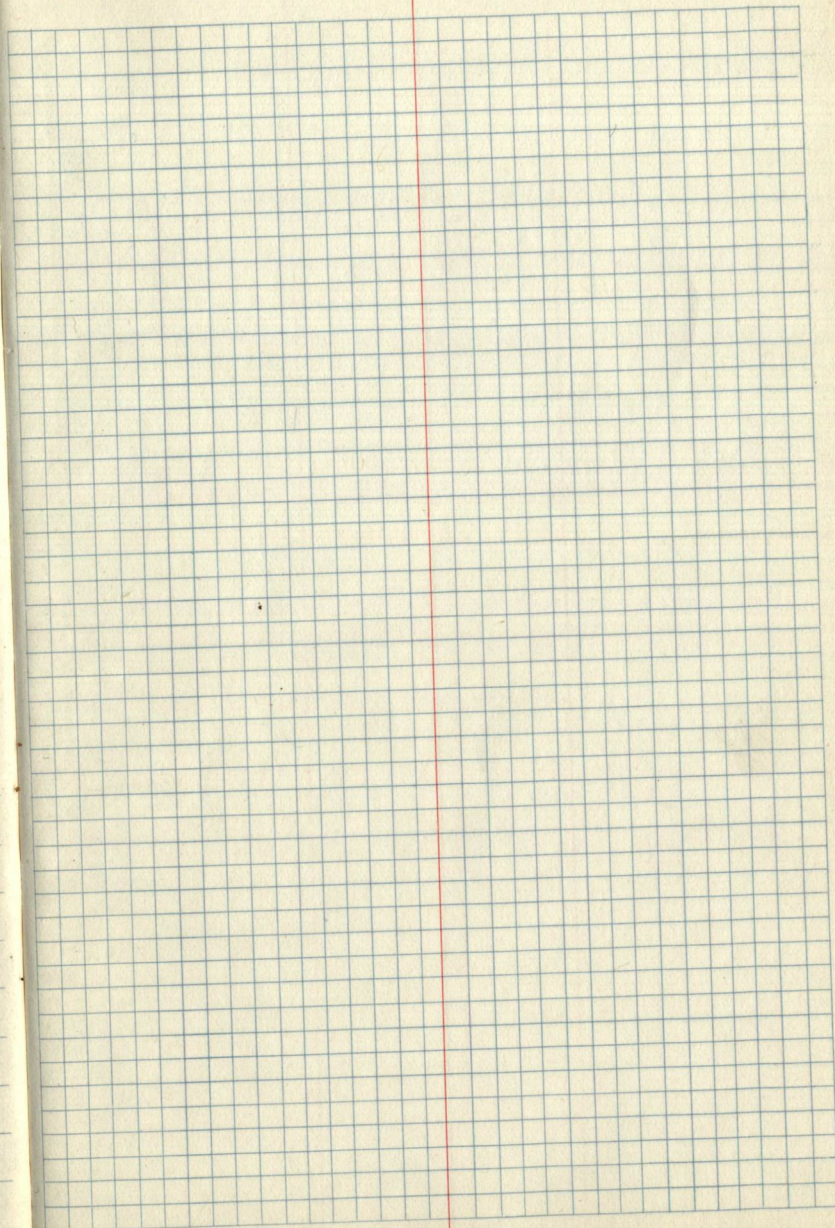


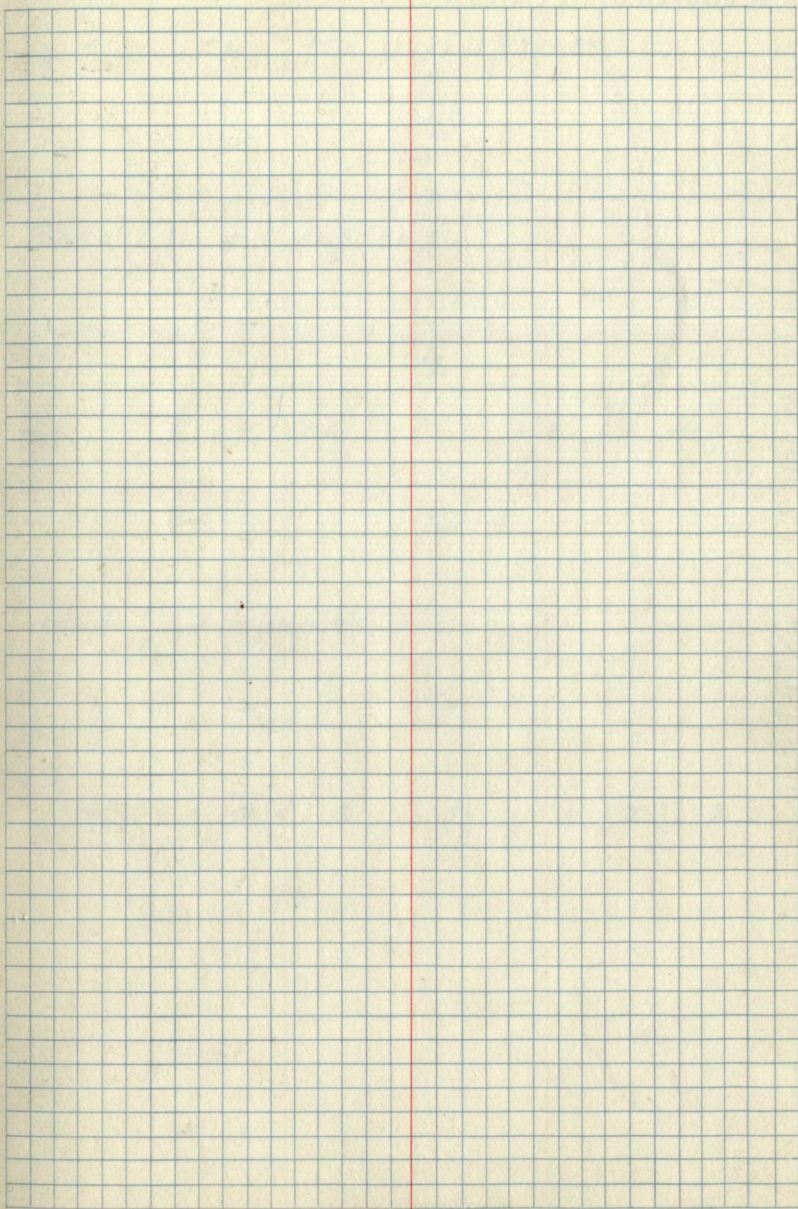
Corner Notes

Cor	Sp	Diam	Bearing	Dist	Remarks
i	R.Pine	20"	S50°W	77 1/2	old Govt B.T B Pine 10" S 20° W
	J.Pine	3"	N 39° E	31 1/2	Iron Pipe 6" high
D	B.Pine	10"	S 20° W	25	old Govt BT
	J.Pine	3"	S 66° E	26 1/2	G.I.O. Cement 6" High
	J.Pine	8"	S 22° W	36 3/4	
	J.Pine	4"	N 82 1/2° W	120 "	G.L.O Cement 6" high
	Aspen	6"	N 24° E	109 3/4	
h 1/4 cor	R.Pine	16"	N 15° W	26 1/2	Brass capped Iron pipe 10" high
	J.Pine	7"	S 25 1/2° E	31 3/4	G.L.O
	J.Pine	5"	N. 04° W	160 1/2	Brass capped iron pipe 10" high
f 1/4 cor					G.L.O
					No trees near Aspen post 4" square
12-1/16	J.Pine	5"	N 85° W	7 1/2	cor MKD
16-1/16	J.Pine	8"	N 67° E	34 1/2	
11-1/16	J.Pine	3"	S 42° W	25	Cor MKd
9-1/16	J.Pine	3"	S 89° W	84 3/4	cor MKd
C	J.Pine	3"	S 80° E	3	
8					1/16 cor MKd. No trees near Set Aspen Post 4" Sq.
15	J.Pine	3"	S 24 1/2° E	17 1/2	
13	J.Pine	4"	S 20° E	9 1/2	1/16 cor MKd
14	R.Pine	14"	N 40 1/2° W	385	old Govt. B.T. Dead
A	R.Pine	16"	N 30 1/2° E	222	G.L.O Cement 6" high
	R.Pine	14"	S 45° E	20 1/2	
	R.Pine	14"	S 9 1/2° E	263	
	R.Pine	5"	S 53° W	3 3/4	
	J.Pine	7"	N 61 1/2° E	19 1/2	1/16 cor MKd
1	J.Pine	10"	S 18 1/2° E	48 1/2	1/16 cor MKd
6	J.Pine	3"	S 10 1/2° W	16 3/4	1/16 cor MKd
7	J.Pine	4"	S 12 1/2° E	127	1/16 cor MKd
5	Aspen	3"	N 34° E	12 1/2	1/16 cor MKd
2	J.Pine	3"	N 47° E	67 1/2	1/16 cor MKd
4	R.Pine	4"	S 43° 30' E	88 1/2	
B	J.Pine	5"	N 52° W	154	

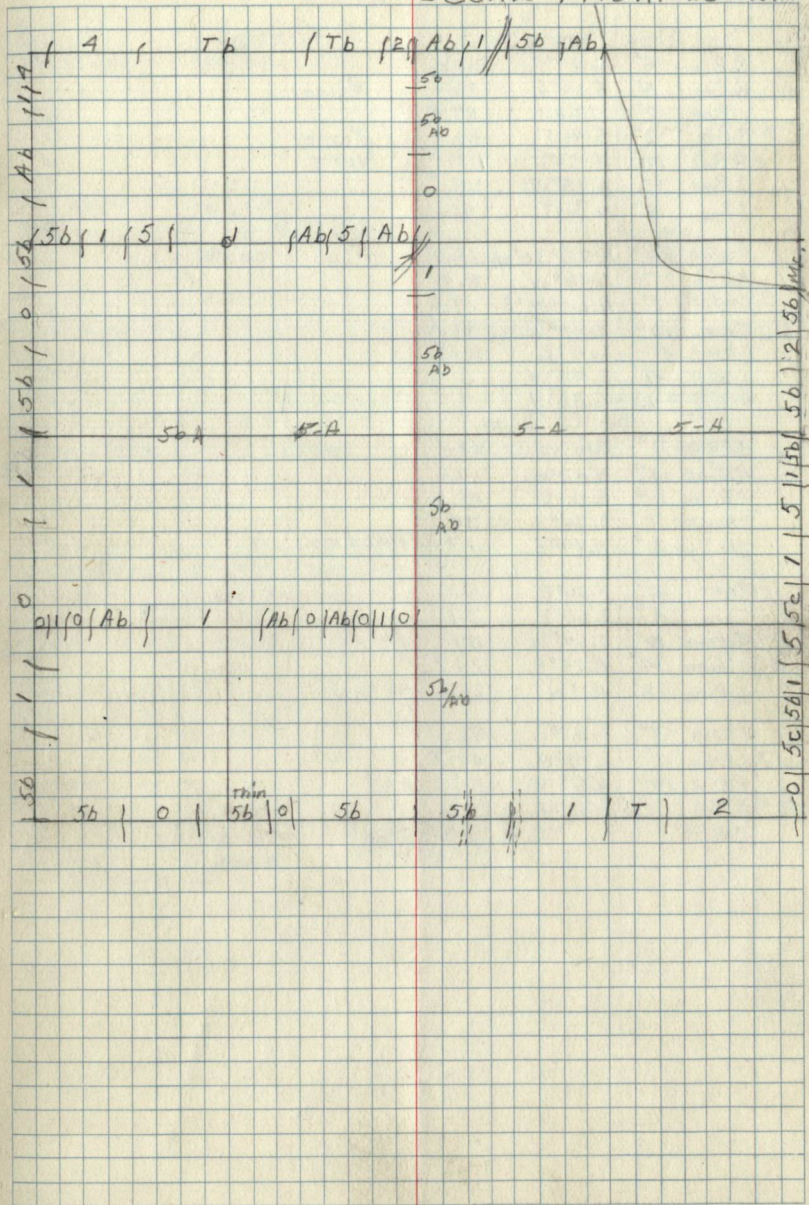
Sec 10 T 145 N R 30 W







Sec. 12-T145N, R. 30W.



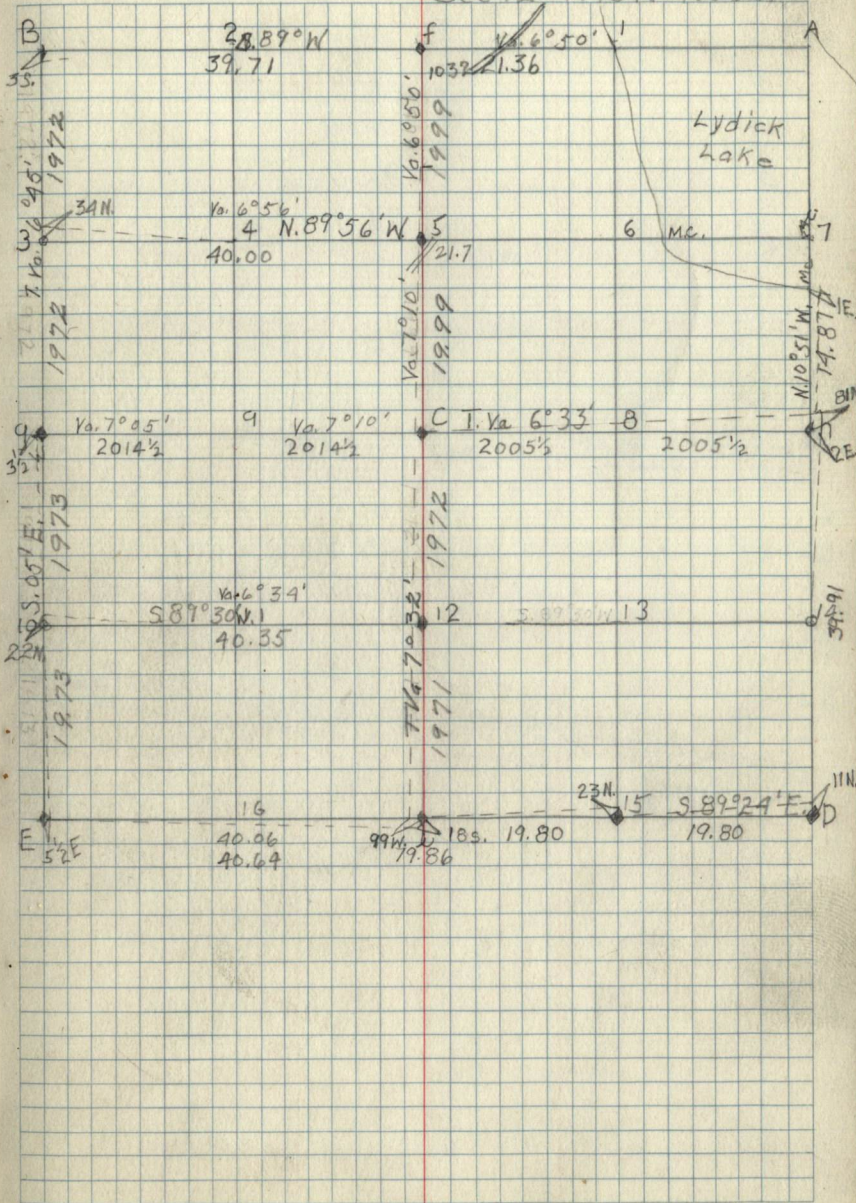
Corner Notes

Cor	Sp	Diam	Bearing	Dist	Remarks
f	R. Pine	6"	N. 79° E	17 1/2	Poster
	R. Pine	6"	S. 14° E	23 1/2	
E	J. Pine	12"	N. 68° E	59	Poster Poster
	R. Pine	12"	S. 45° E	81	
g	R. Pine	19"	N. 43° E	180	Poster
	J. Pine	18"	N. 18° W	112	
h	J. Pine	4"	N. 38° E	40	Poster
	Aspen	2 1/2"	N. 73° 30' W	18	
M.C. at 1	Birch	2.75"	S. 46° W	8.5	Poster
	Cedar	7"	N. 69° 30' E	17	
B.	Tam.	10"	N. 30° W	31	Poster
	Cedar	4"	S. 15° E	16.5	
B. Spruce Stb.	Cedar	4"	S. 45° W	5	Poster
	B. Spruce Stb.	6"	S. 38° W	9	
E.	J. Pine	7"	S. 18° W	32.5	Poster
	R. Pine	14"	N. 42° W	178	
J. Pine	J. Pine	8"	N. 35° E	45.5	Poster
	J. Pine	7"	S. 36° E	34	
J. Pine	J. Pine	6"	N. 49° E	17	Poster
	Tam.	4"	N. 30° E	40	
15.	Tam.	4"	S. 60° E	39	Poster
	J. Pine	10"	S. 54° E	117	
D.	J. Pine	14"	N. 75° E	212	Poster
	J. Pine	18"	N. 1° W	266	
M.C. Sa. at 7	J.P. Sa. R.	3"	S. 27° E	96	Poster
	J.P. Sa. R.	4"	S. 41° W	42.5	
i.	R. Pine	12"	N. 50° W	81.5	GLO
	R. Pine	14"	S. 45° E	72	

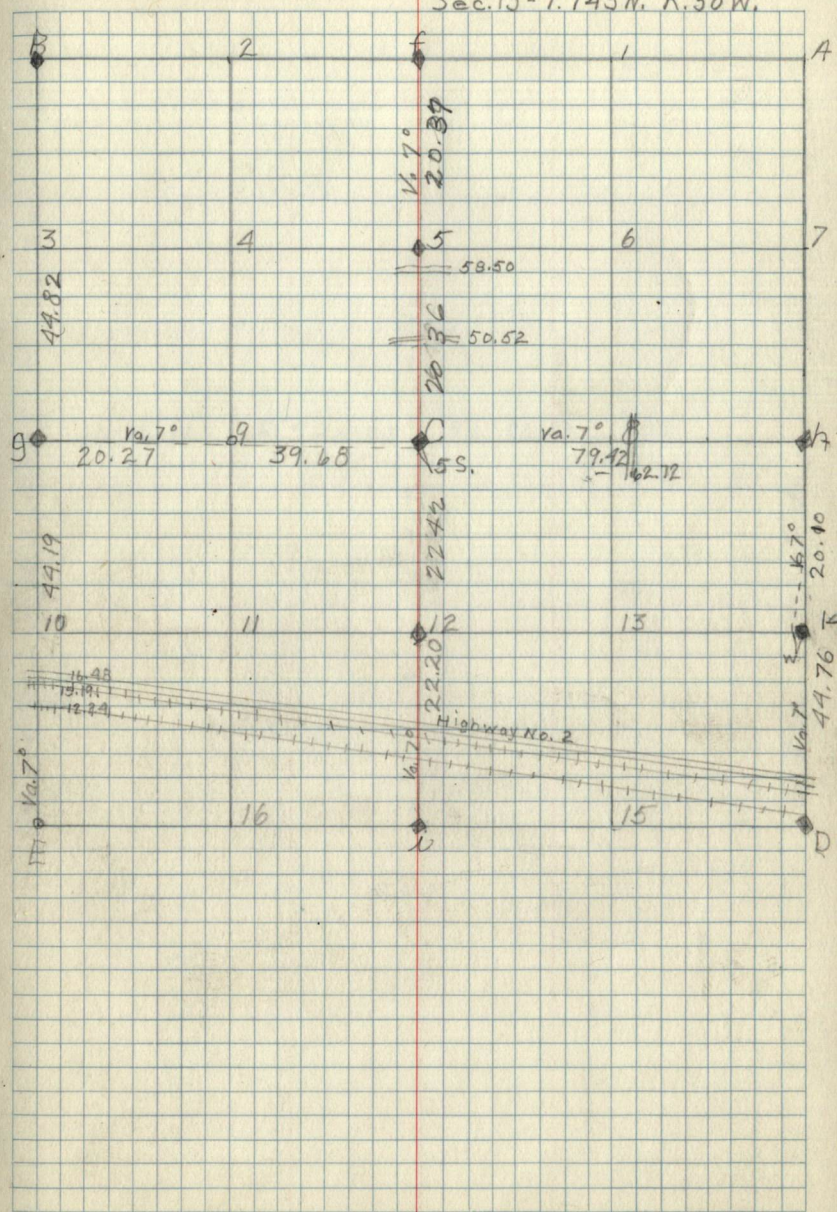
J.A. Gjelhaug.

22

Sec 12 T145N R30W



Sec. 13-T. 145N. R. 30W.



54

52

51

50

Tc 1 4

10

11

12

13

14

15

16

17

18

19

20

21

22

23

24

25

26

27

28

29

30

31

32

5b-8b-9b |

6-4 Swamp |

9-b-8b-5b

|| Ab

17

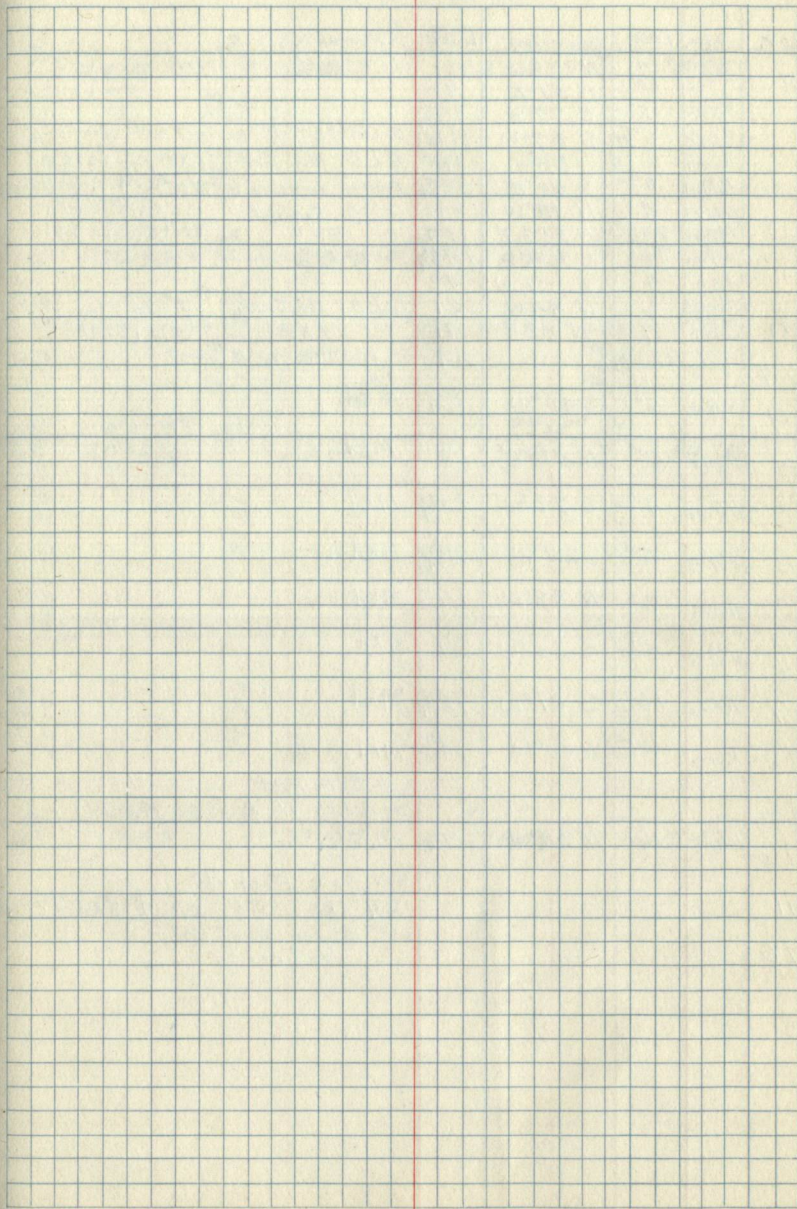
16-4-7

Ac | Fe | Ba |

19-8-5-8a

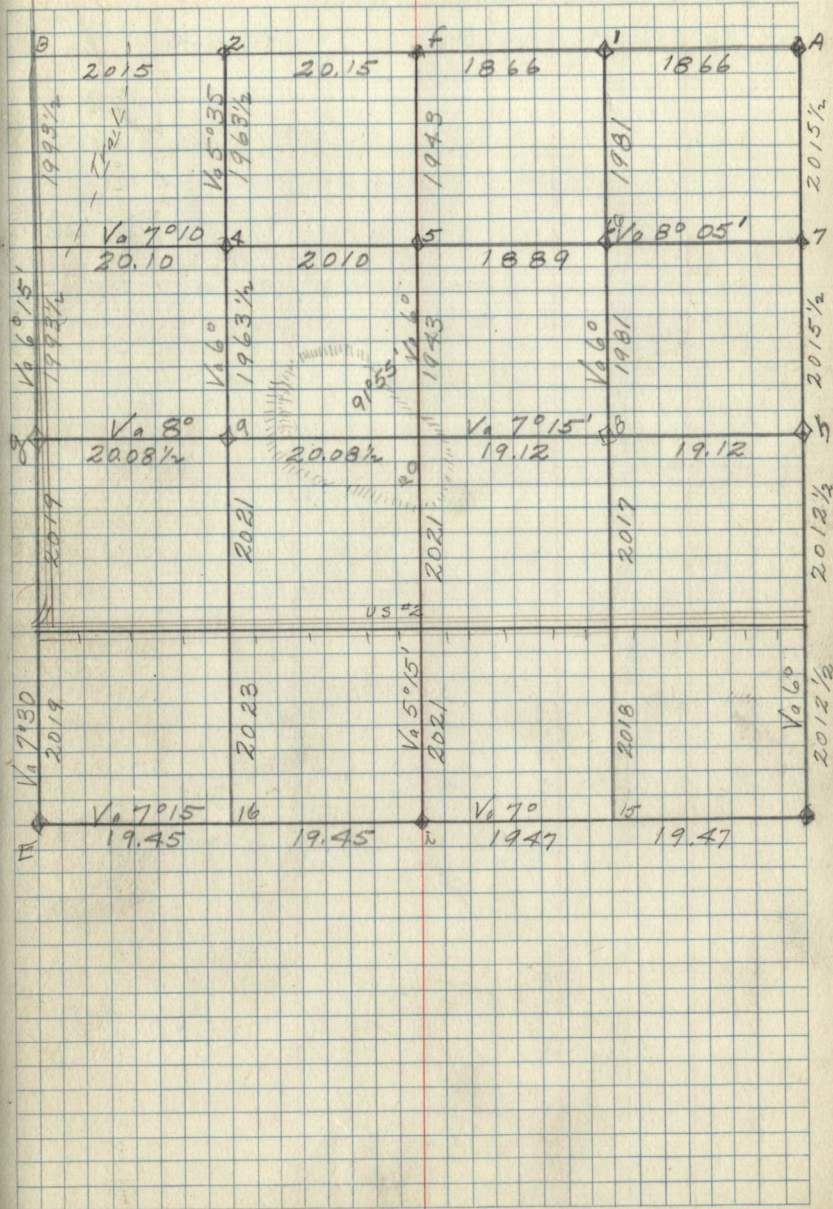
19-8-5

Ab



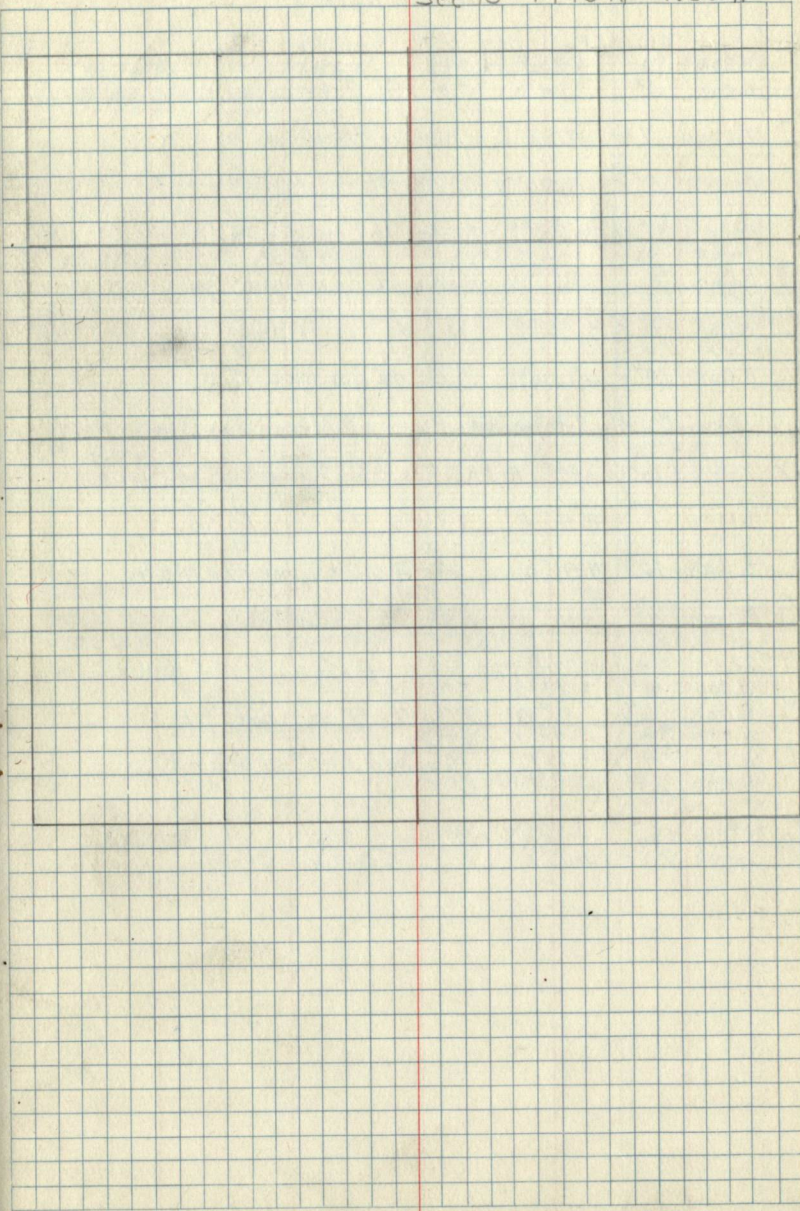
Corner Notes

Cor.	Sp.	Diq.	Bearing	Dist	Remarks
E	Rock	14"	N 33° W	101	GLD Br Cap Concrete
	Rock	10"	N 51° E	98	
	ROak	12"	S 72° E	75 1/4	
	ROak	6"	S 07° W	111	poster on aspen 3" 10 links South
	Birch	6"	N 88° W	18	GLD Br Iron 1XB
i	H. Maple	9"	S 60° E	53 3/4	Poster on Aspen 6" N 65° E 7 1/2 links
D	Aspen	4"	N 18° W	39 1/2	GLD Cement
	WPine	8"	N 22 1/2° E	107	5X6
	WPine	18"	S 75° E	142 1/2	Poster on Aspen 10" N 14° E 22 1/2
	Ash	4"	S 10 1/2° W	43	
h	Twinkl w Oak	6"	N 44° W	21	GLD Br Iron
	w Oak	7"	N 88° E	41	1XB
14	Telephone Pole		W	44	Set willow 1/6 3" post
9	woak	6"	S 40° W	5 1/4	Mkd.
4	Aspen	5"	N 48° E	13	Mkd
5	WPine	4"	S 73° W	10 3/4	Mkd
8	Aspen	5"	S 29° W	8 3/4	Mkd
C	Aspen	3"	N 33° W	17 1/2	Mkd
6	WPine	5"	S 25° W	21	Mkd
7	RPine	16"	S 01° W	72 1/4	Mkd
15	ROak	5"	N 40° W	14	Mkd
13					Set Elm Post 34 1/2 Lks N of Soo Track
16	woak	14"	N 30° E	19 1/4	Mkd
11					set Oak Post 4" 29 lks So of Soo Track
10					set Aspen Post 3" No Trees.



Sec 15 - T145N R30W

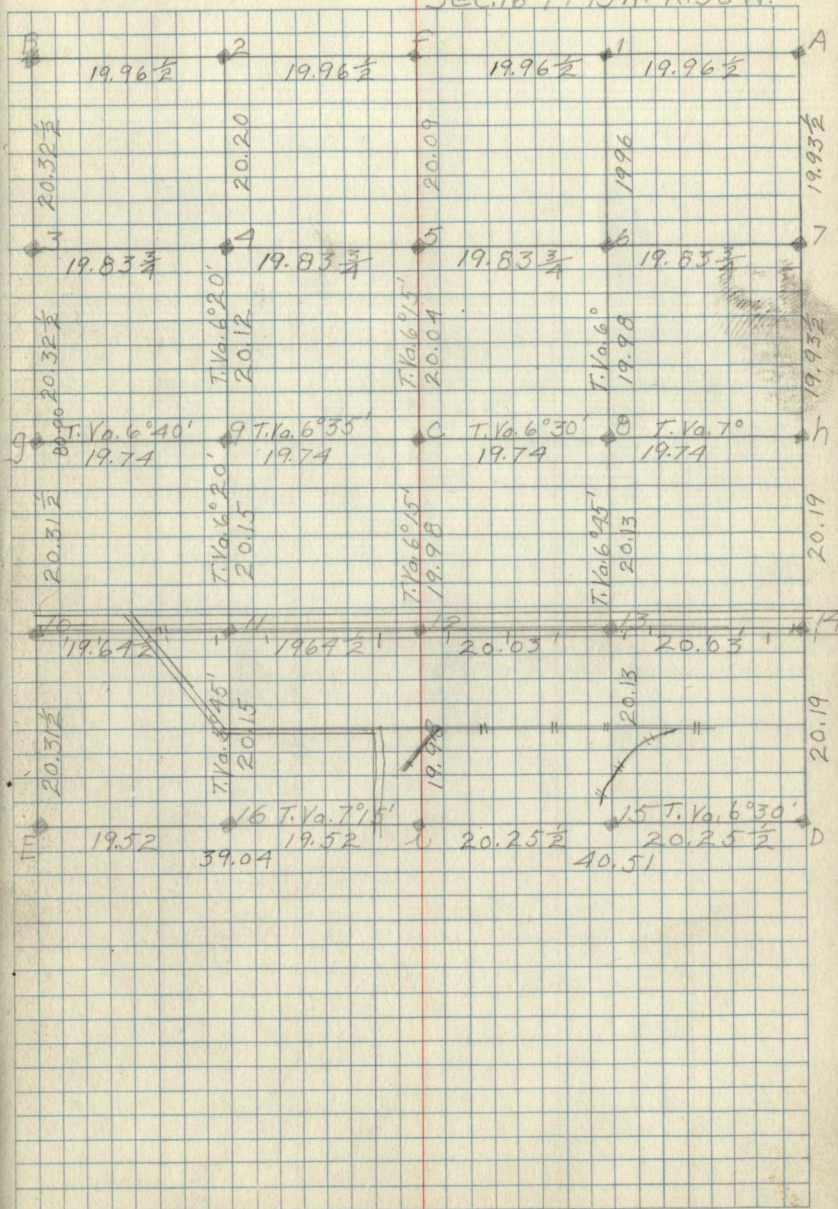
Corner		Notes		Remarks
Cor	Sp	Diam	Bearing Dist	



Corner Notes

Cor.	Spec	Dia.	Bearing	Dist	Remarks
W	W.Oak	6"	N. 20° W.	54 1/2	
1/4 cor.	W.Oak	5"	S. 24° E.	56	G.L.O. Br. capped iron pipe 10" high
7	Aspen	7"	N. 62° E.	11 Lks	1/6 cor. MKd.
5	Aspen	5"	S. 50° W.	12 1/2 Lks	1/6 cor. MKd.
6	Aspen	5"	S. 20° E.	19 Lks	1/6 cor. MKd.
4	Twin R.Oak	5"	S. 85° W.	12 Lks	1/6 cor. MKd.
8	W.Oak	7"	S. 35° E.	16	1/6 cor. MKd.
15	Twin R.Oak	10"	South	4 1/2	1/6 cor. MKd.
13	set Birch stake 33 Lks. S. of S. Rail, Soo Line				
12	set Oak post 4" - 15 Lks. S. of S. Rail of Soo Line				
1	J. Pine	7"	N. 43° E.	11 1/2 Lks.	1/6 cor. MKd.
C	R. Oak	12"	N. 41° W.	14	1/4 s. center S 16 MKd.
9	Aspen	7"	S. 5° W.	22	1/6 cor. MKd.
11	1/6 cor. set W.Oak post 3 1/2" sq. 15 Lks S. of S. Rail of Soo Line				
9	W.Oak	8"	S. 27° E.	34	
	B.Oak	6"	6° W.	64	1/4 cor. between 5-16
	W. Pine	30"	N. 48° W.	64	
D	W. Pine	30"	S. 10° E.	70	Sec. cor. 15-16-21-22
	W. Pine	24"	S. 45° W.	80	
h	W. Pine	10"	S. 12° W.	16	
	Sugar	4"	N. 8° E.	28	1/4 cor. 16-21

Sec. 16-T145N. R. 30W.

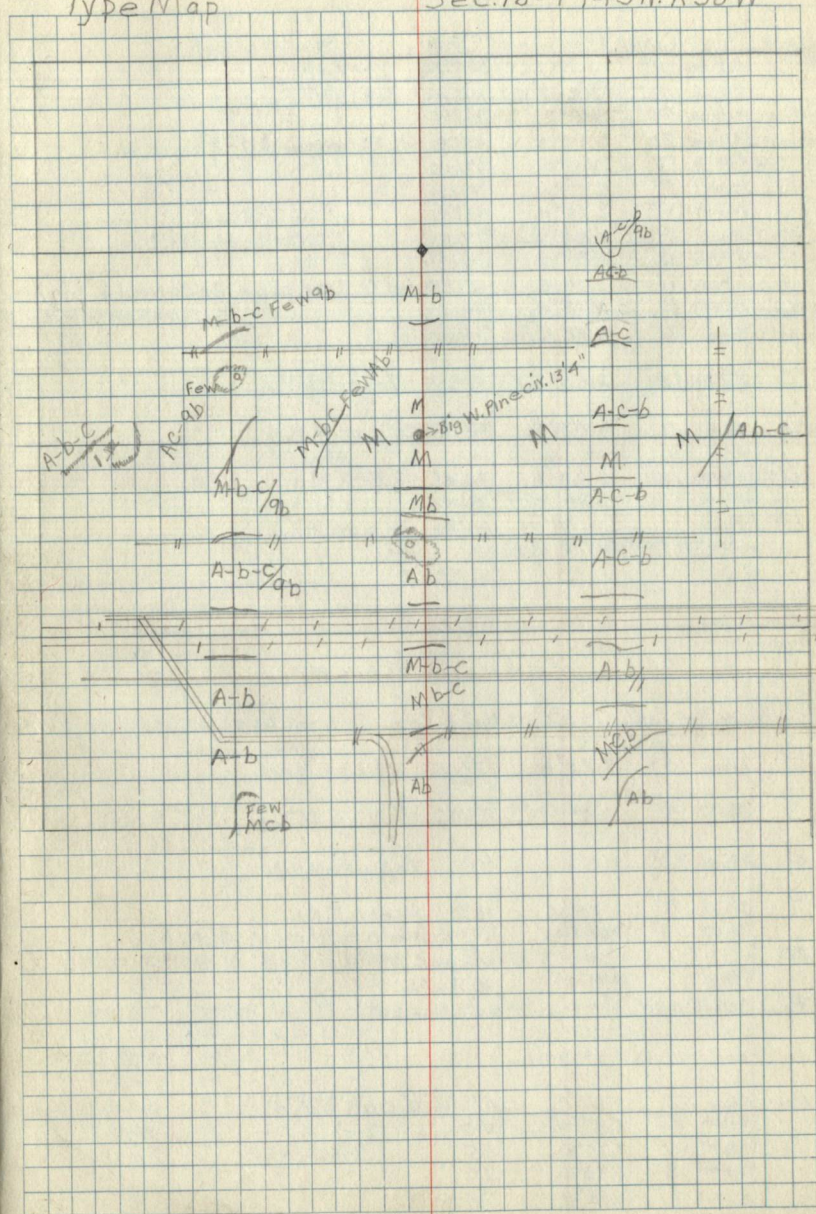


J.A. Gjelhoug

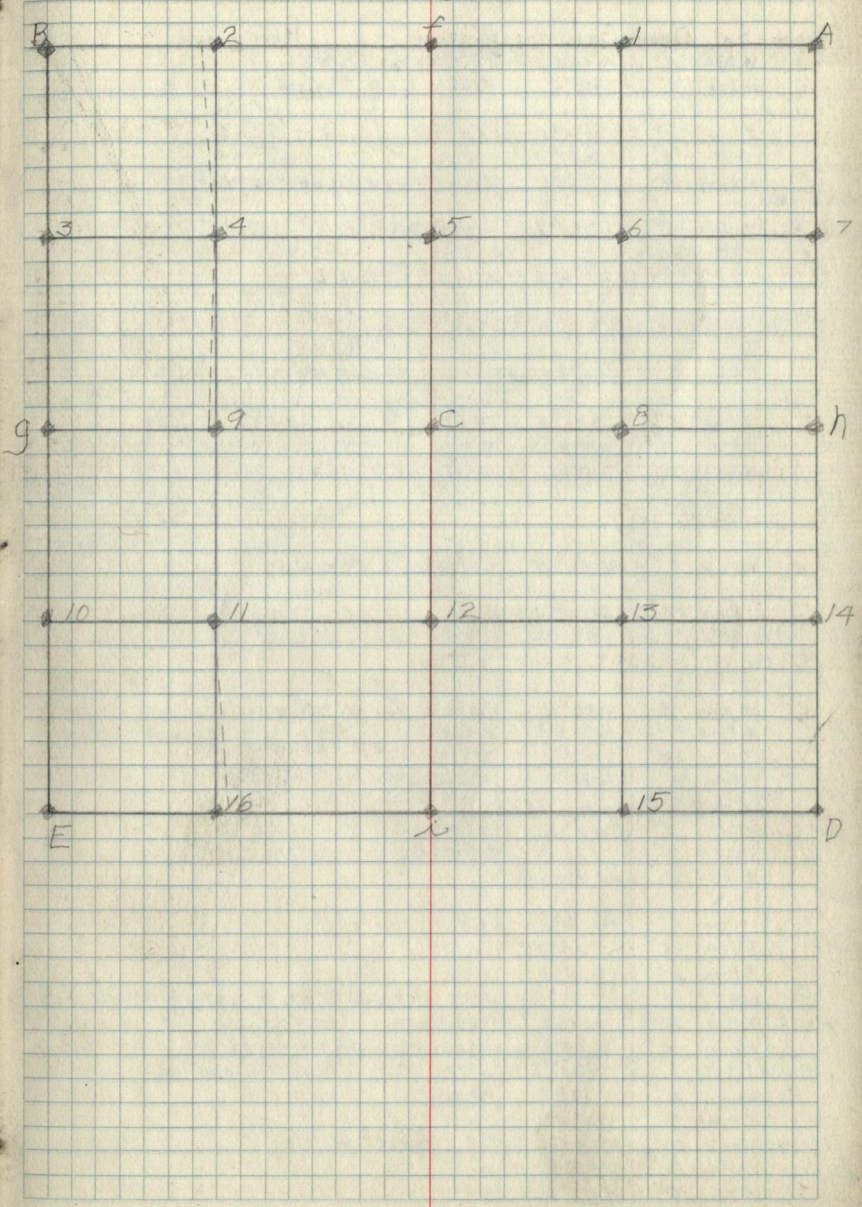
30

Type Map

Sec. 16-T145N.R30W



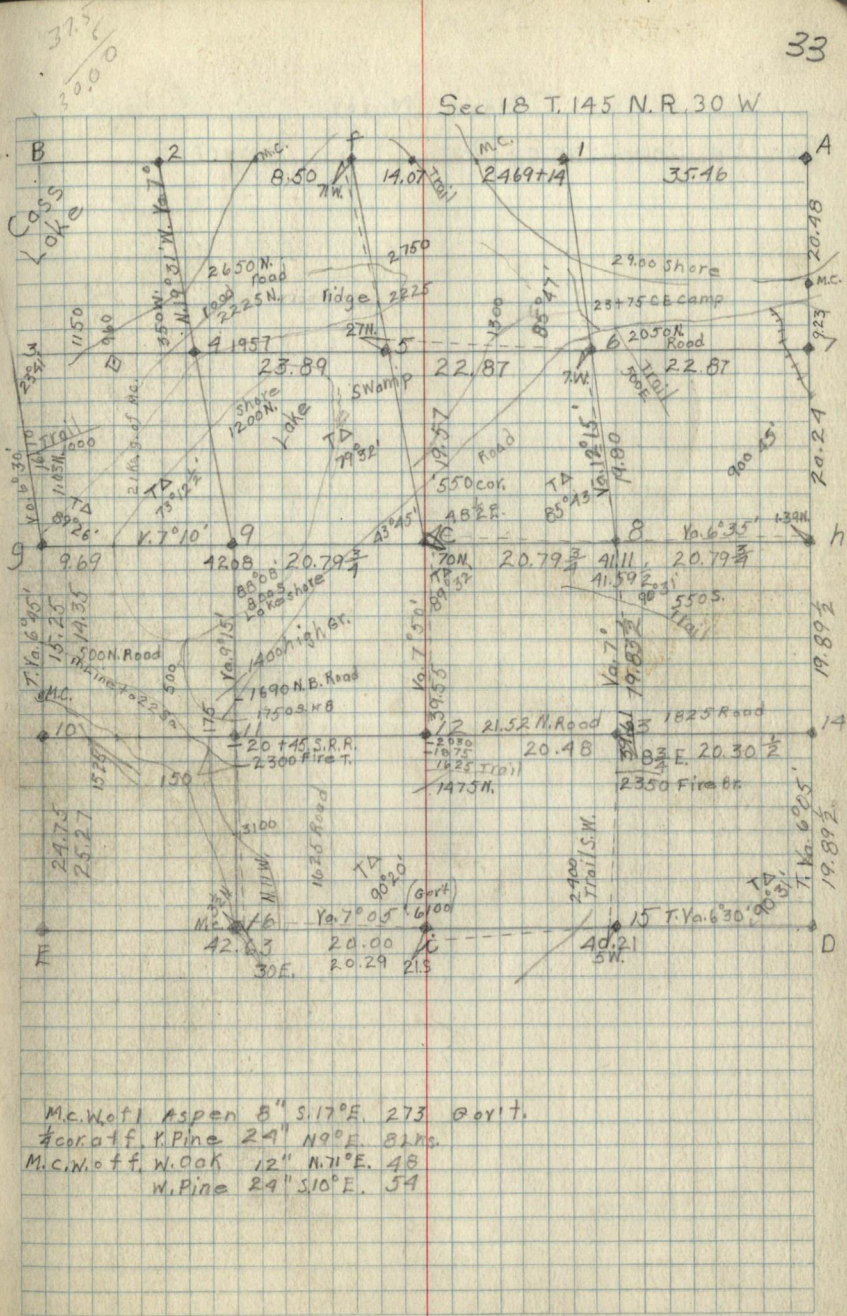
Sec 17 T. 145 N. R. 30 W



Corner				Notes	
Cor	Sp	Diam	Bearing	Dist	Remarks

Corner Notes

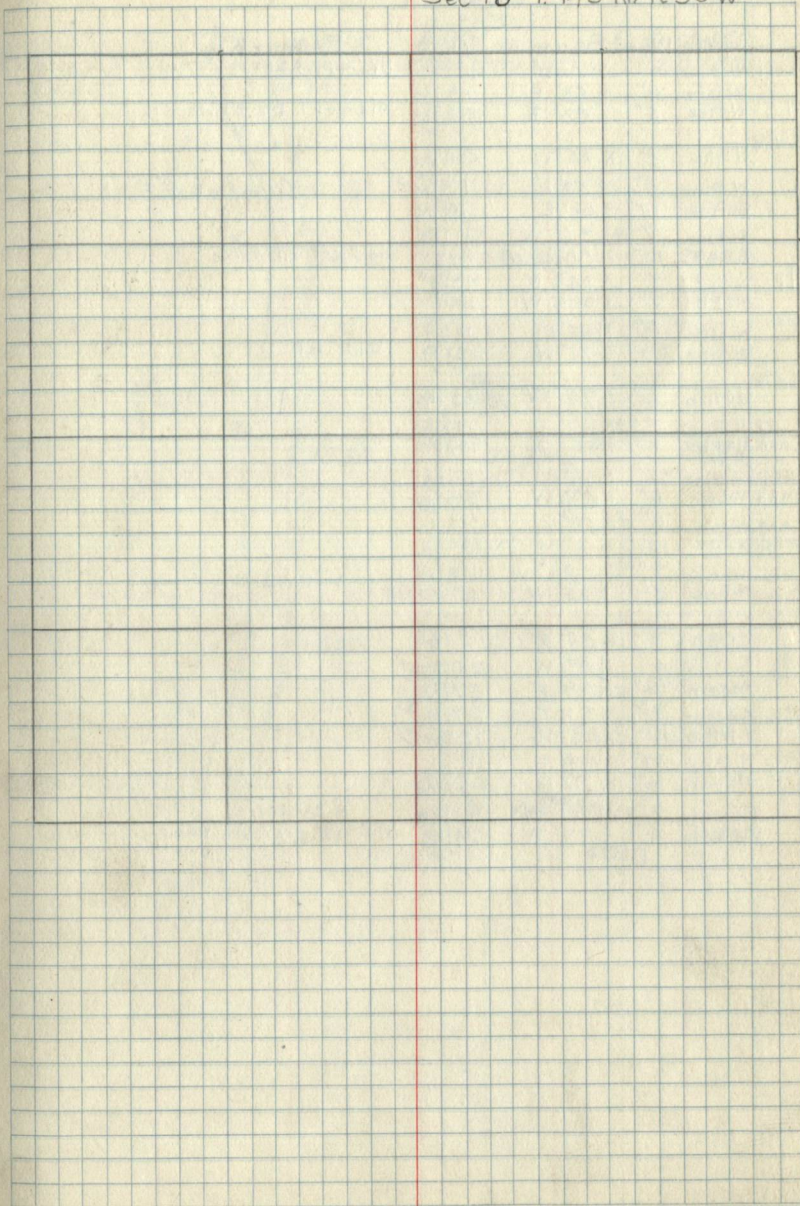
Cor	Sp	Diam	Bearing	Dist	Remarks
M.C.N. of	W. Oak	5"	N. 34° W.	22 1/2 Lks	16' Mc.
10	W. Oak	4"	S. 48° E.	37 1/2 Lks	30' G.L.O. (S13/S18)
f 1/4 cor.	R. Oak	6"	N. 20° E.	22 1/2 Lks	1/4 S18 cements
	oak	4"	N. 31° N.	3 1/4 Lks.	
C	Aspen	9"	N. 61° E.	28 Lks	Center of Sec. MKd.
29 Lks. E. of M.C.					
16 1/2	cor. Ash	4"	S. 85° E.	11 Lks.	M.C.B.T.
11 1/2	cor.	62 1/2 Lks.	N. of the N. Rail of So. Track		
12 1/2	cor.	46 1/2 Lks.	S. of S. Rail of No. Track		
4	P. Pine	4"	North	12 Lks	1/4 cor. MKd.
8	J. Pine	5"	S. 31 1/2° E.	18 1/2 Lks.	1/4 cor. MKd.
M.C. W	W. Oak	8"	N. 31° E.	8 1/2 Lks.	Mc.
of f	W. Oak	4"	S. 3° W.	19 1/2 Lks	G.L.O. cement 5" (S7/S18)
M.C. E.					Mc (S7/S18)
of f	1407	No. B.T.S.			
6	R. Oak	5"	N. 86° W.	21 1/2 Lks.	1/4 cor. MKd.
15	J. Pine	12"	N. 50° W.	5 1/4	1/4 cor. MKd.
13 1/2	cor.	25 1/2 Lks.	S. of S. Rail of No. Track		
5	W. Pine	3"	S. 32° W.	30 1/2 Lks	1/4 cor. MKd.
	R. Pine	24"	N. 21 1/2° E.	24 Lks.	
	R. Pine	20"	S. 11 1/2° E.	73 1/2 Lks.	1/4 cor. between 18-19
	R. Pine	20"	N. 20° E.	41 Lks.	G.L.O. Br. Caped Iron
					Metal Poster 12 Lks. E.
M.C. of	Ash	4"	N. 5° E.	10 Lks.	
16	Ash	5"	East	40 1/2 Lks	G.L.O. cement 5" brass
					Metal Poster 4 Lks. S.
	Pine	5"	N. 20° E.	67	
Gov't. B.T.U	P. Pine	14"	S. 30° E.	6	
	R. Pine	20"	S. 41° W.	89 1/2	
9	W. Pine	12"	S. 77° E.	127	5" cement Br. P. (S13/S18)
M.C. So.	R. Pine	20"	S. 42 1/2° E.	172 1/2 Lks.	
of 3	R. Pine	10"	S. 20 1/2° W.	146 Lks	cements 5" (Mc S13/S18)
M.C. of B. Ash		5"	S. 65° E.	63 1/2 Lks	
Gov't.	16 Aspen	6"	N. 19° E.	17 Lks.	
	M.C.N. Popular	8"	N. 1° W.	36	
of f.	10 W. Oak	10"	N. 85° E.	90	Gov't. B.T.S.
1/4 cor. of	W. Pine	16"	S. 65° E.	27	
9	R. Pine	16"	N. 78° W.	44	
M.C. So.	W. Oak	8"	S. 63° E.	13 Lks.	
of 3.	Poplar	3"	S. 37° W.	76 Lks	Gov't.



Corner Notes

Cor	Sp	Diam	Bearing	Dist	Remarks

Sec 18 T. 145 N. R. 30 W



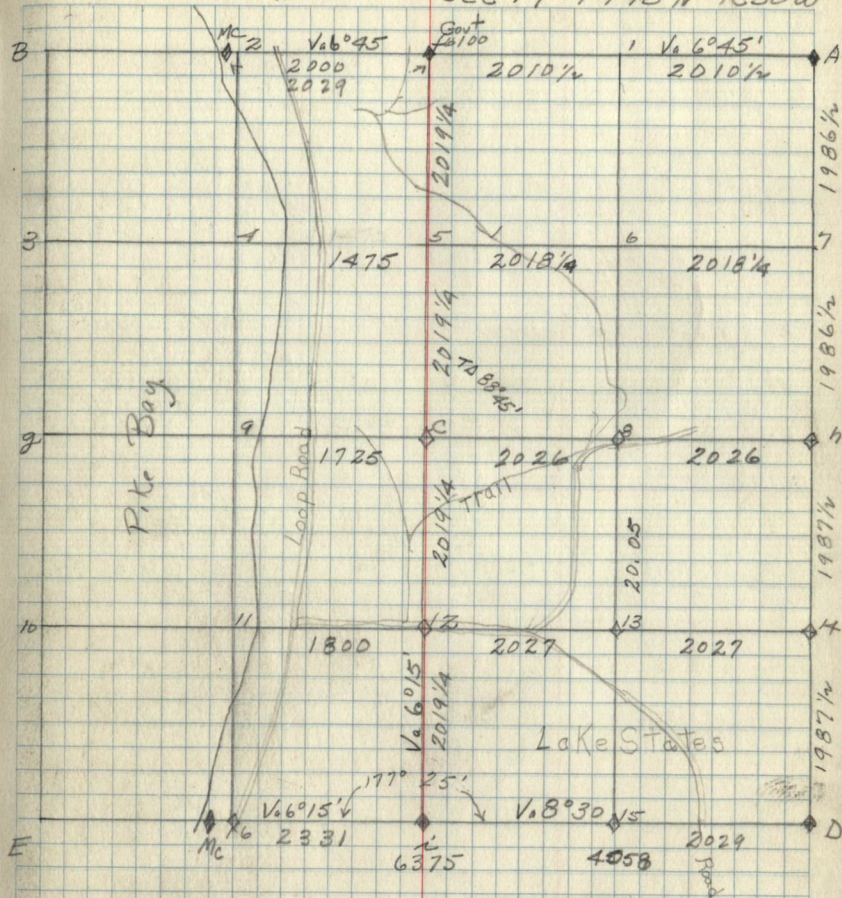
Corner Notes

Cor	Spec.	Diam	Bearing	Dist.	Remarks
1/4 Corati	W. Pine	6"	S 54° W	22 1/2 Ks	Br. Caped Iron 5" high 1 S 19 4 S 30
	W. Pine	4"	N 53° E	33 1/2 Ks	
	N. Pine	5"	S 85° E	32 1/2 Ks	
M.C					Old Govt B.T. stubs OK.
3.31 W. 1/4	N. Pine	8"	N 75° W	34 1/2 Ks	G.I.O. Blaze face to Mark south
D	W. Pine	6"	N 53° E	13 1/2 Ks	G.I.O. Cement 4" high
	W. Pine	10"	S 56° E	40 1/2 Ks	
	W. Pine	7"	S 36° W	41 1/2 Ks	
h	R. Oak	12"	N 80 1/2° W	24 1/2"	Old Govt B.T. O.K.
	W. Oak	5"	S 14 1/2° E	43 3/4"	
	Maple	7"	S 66 1/2° W	69"	
C	W. Pine	8"	N 55° E	12 3/4 Ks	Old B.T.
	W. Pine	3 1/4"	S 70° W	69 1/2 Ks	
12 1/4	J. Pine	5"	S 77° W	23 1/2 Ks	
15 1/4 MKd	N. Pine	5"	N 42° W	24 1/2"	
8 1/4 MKd	Maple	6"	N 45° E	10 1/2 Ks	
13 1/4 MKd	N. Pine	3 1/2"	N 19° E	18 1/2 Ks	
14 1/4 MKd	Aspen	6"	N 49° W	22 1/2 Ks	
7 1/4 MKd	Birch	6"	N 49° W	33 1/2 Ks	
5 1/4 MKd	N. Pine	10"	N 0° 30' W	26 1/2 Ks	
6 1/4 MKd	Roak	7"	S 49 1/2° W	14 1/2 Ks	
Meat 16	N. Pine	5"	N 25° W	27 1/2 Ks	abt
Gov't B.T.s at:					
	Birch	3"	S 89° E	15 1/2 Ks	
h	Boak	4"	N 80° W	25 1/2 Ks	
	Aspen	12"	N 58° E	27 1/2 Ks	
1/4 Corati	Aspen	3"	S 53° E	27 1/2 Ks	
	J. Pine	12"	N 89° E	130"	
M Cat 16	J. Pine	14"	S 48° E	110"	
	Aspen	6"	N 70° E	7 1/2 Ks	
D	Aspen	6"	N 75° W	92 1/2 Ks	No other tree near
	Aspen	4"	S 72° W	74 1/2 Ks	

(V. used on all B.T.s)
7°

For North Corners
Refer to Sec. 18

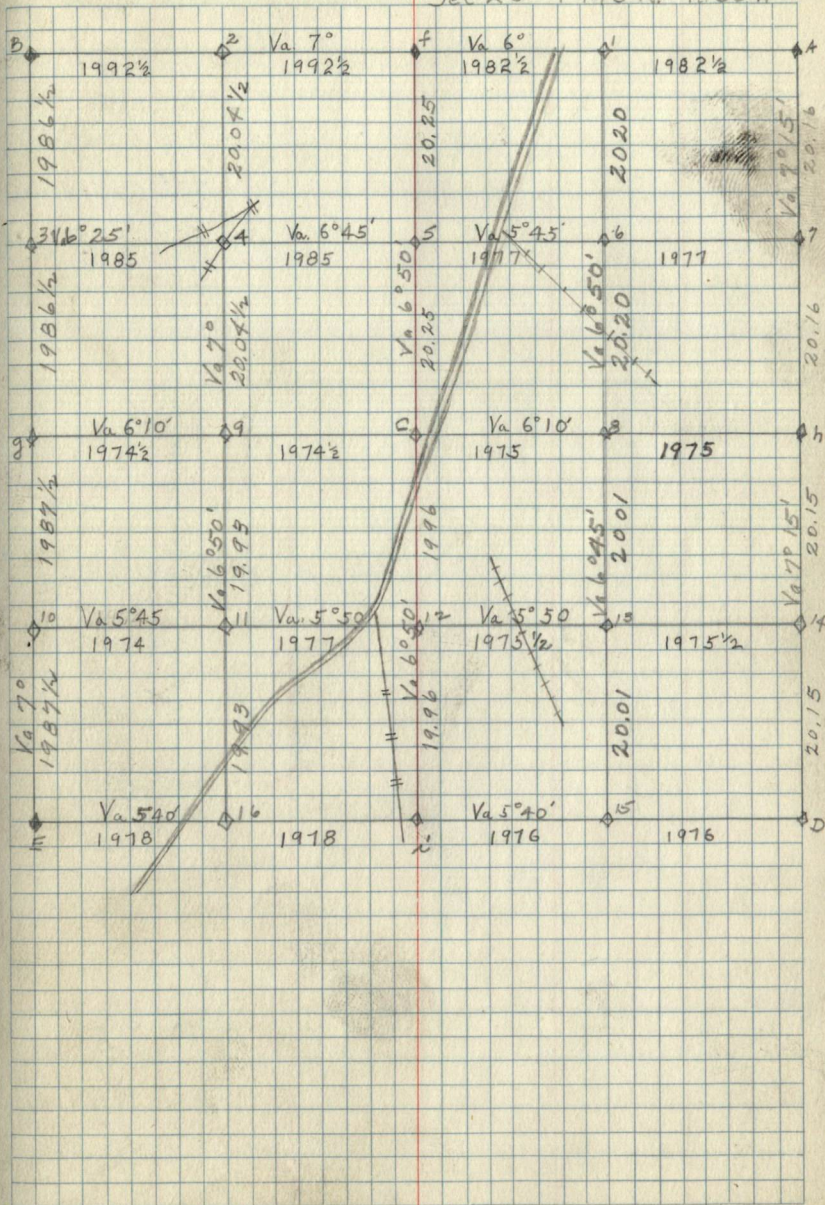
Sec 19 T145N R30W

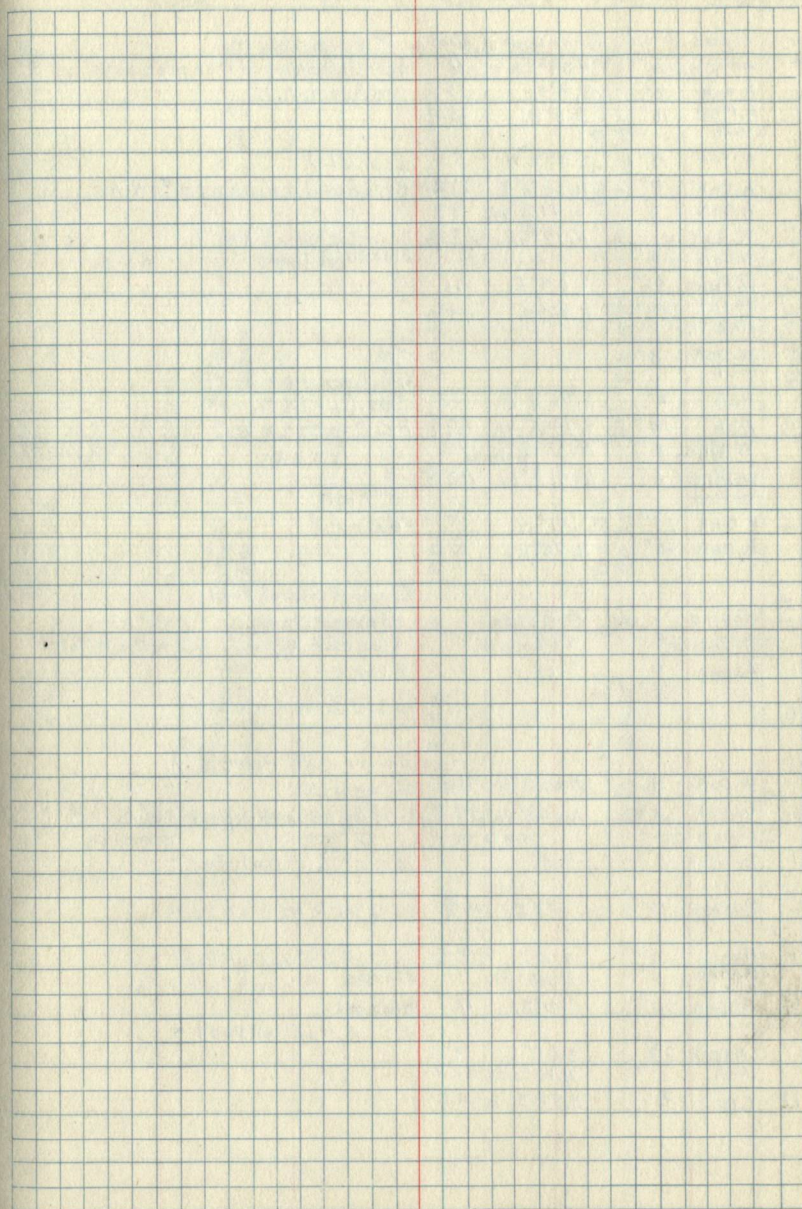
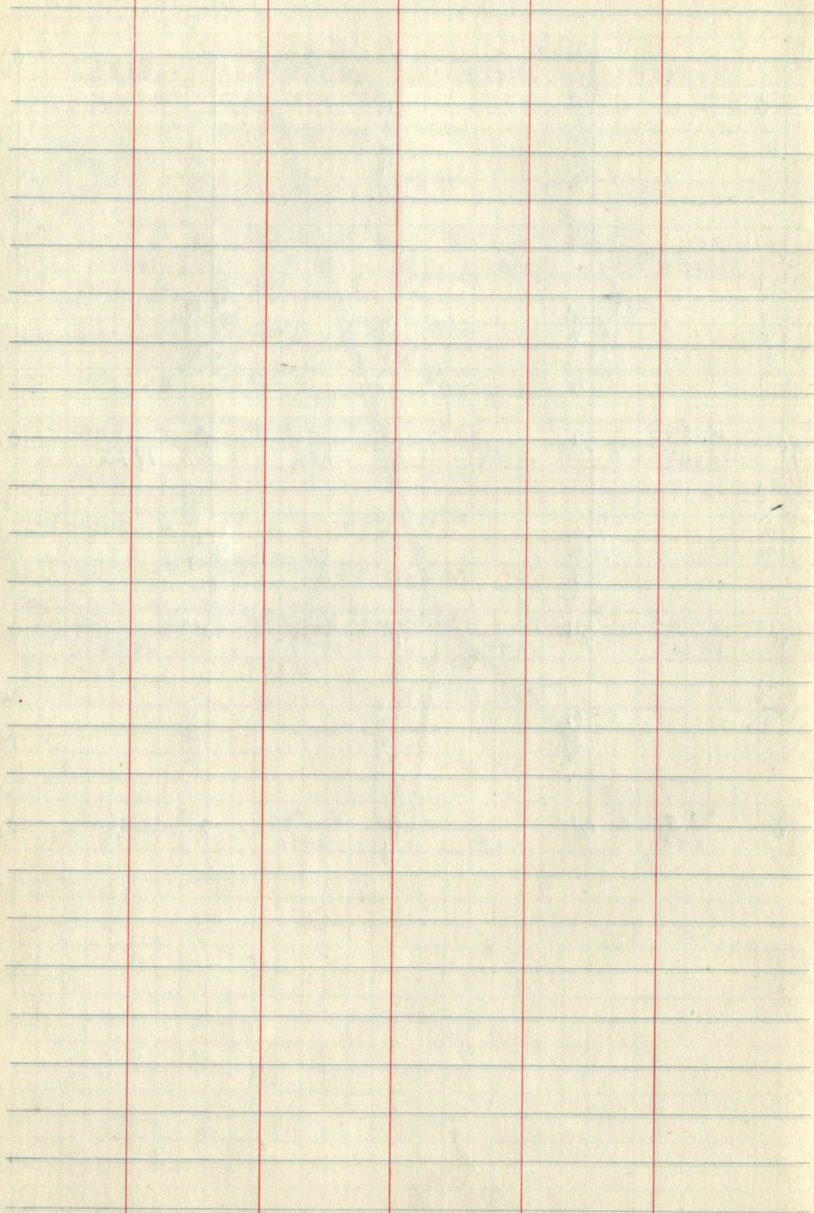


Corner Notes

Cor	Sp	Diam	Bearing	Dist	Remarks
i	Aspen W.Oak	6" 8"	N15°E S81°E	28 57 3/4	G.L.O. Iron Pipe 1 1/2" 10° (3 20) (4 6-29)
16	W.Oak	6"	N10°30'E	14	Mkd. 6-22-34
9	Ash	6"	N36°E	10 3/4	Mkd 6-22-34
11	Birch	8"	S88°E	2 3/4	Mkd 6-22-34
12	Birch	6"	N40°W	9	Mkd 6-22-34
C.	Aspen	6"	S45°E	5 1/4	Mkd 6-25-34
5	Boys Wood	12"	N25°W	7 1/4	Mkd 6-26-34
4	Birch	4"	S40°E	8 1/2	Mkd
6	Aspen	9"	S67°W	17	Mkd
14	W.Oak	6"	N4°W	20	Mkd
13	ROak	14"	N46°E	22 1/2	Mkd
8	ROak	12"	N89 1/2°E	26 3/4	Mkd
15	W.Oak	7"	N39°W	21	Mkd

Sec 20-T145N. R 30W





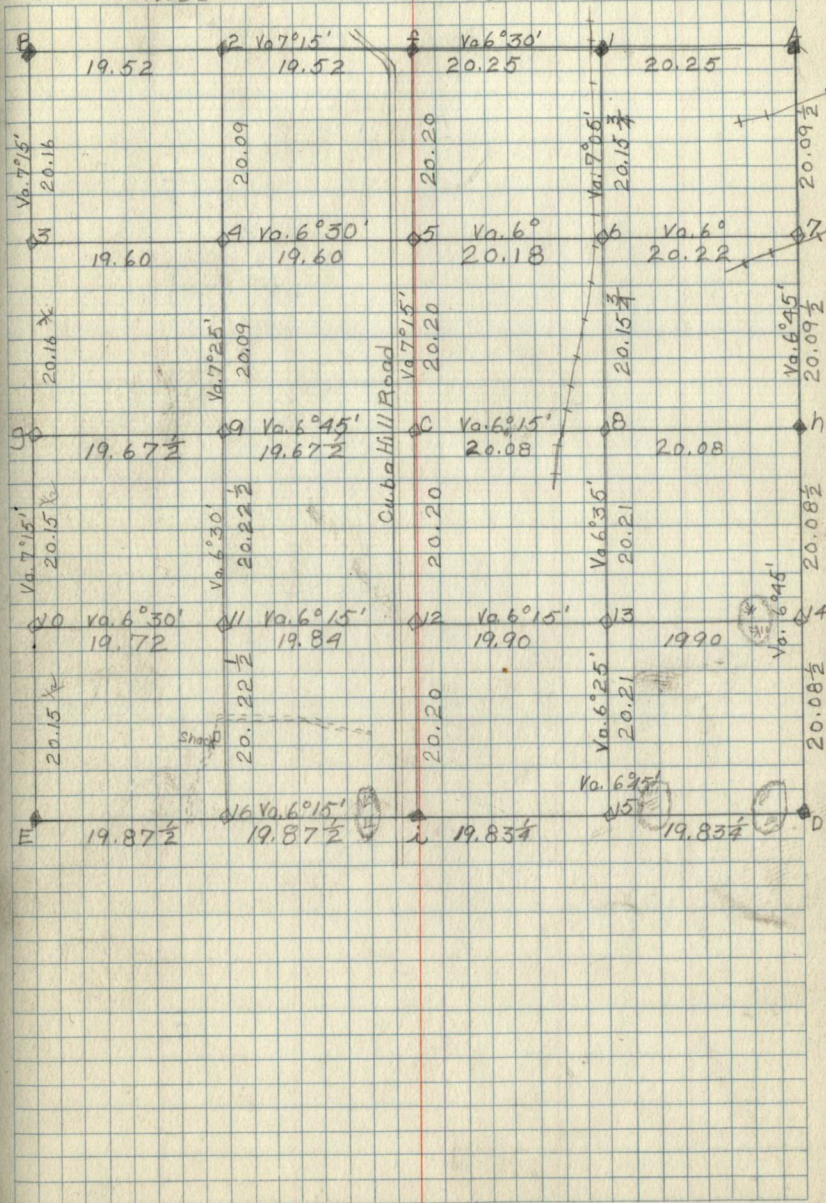
Corner Notes

Cor.	Spec.	Dia.	Bearing	Dist	Remarks.
f.	W.Oak R.Oak A.Pine St.	5" 10" 16"	N.59°E. S.8°E. S.11°W.	11 57 1/2 15 3/4	1/4 cor. GLO. Br. Coped iron pipe 1"x10" h. (S21/S22) old Gov't. B.T.
i.	Birch R.Oak R.Oak	4" 8" 6"	S.38 1/2°W. N.62 1/2°E. S.99 1/2°W.	58 21 1/4 8 1/2	1/4 cor. GLO. Br. Coped cement 5"x4" h. (S21/S22) 1/4 cor. GLO.
g.	W.Oak W.Oak	4" 4"	N.17 1/2°E.	28 1/4	Br. Coped pipe 2"x10" h. Blazed 2 Sides (S20/S21)
5	W.Pine Burnt Pine St.	36" 30"	S.64°E. N.78°E.	41 43 1/2	1/4 cor.
C	W.Oak Post	3"			S.G. 1/4 S. Center S. 21
E	Ash W.Pine W.Pine Ash Post	6" 14" 6" 6"	S.76 1/4°E. S.19 1/4°W. N.55 3/4°W. N.41 1/2°E.	42 89 3/4 72 105 3/4	Sec. Cor. GLO. Br. Cement 5"x2" h. (S20/S21) (S29/S28) 5" high
12	R.Oak R.Oak	14" 10"	S.41°W. N.75°E.	5 8 1/2	1/4 cor.
3	W.Pine Ash	3"	S. 8 1/2° Lks. N. 6 1/2°		1/4 cor. 4" R.Oak Post Blazed line
11	Aspen	8"	E. 61°		Blazed 1/4 cor. 3 1/2" W.Oak Post
10					1/4 S. 3 1/2" W.Oak Post
16	W.Oak	4"	N.85 1/2°E.	91 3/4	3 1/2" W.Oak Post 5' h. 1/4 cor. GLO.
h	W.Oak	3"	N.102 3/4°W.	59 3/4	Br. Coped iron pipe 1"x6" h. (S21/S22)
1	Twin Oak	3"	S. 5°		1/4 cor. 3" R.Oak Post
8	Basswood	12"	S. 50°E.	14 3/4	1/4 cor. 3" W.Oak Post
6	Aspen R.Pine	10" 6"	N. 6°E. N. 63° Lks.	18 1/2	1/4 cor. 3 1/2" W.Oak Post Blazed
14	Aspen	10"	S. 41°E.	16	Blazed 1/4 cor. 4" W.Oak Post
7	Aspen Ash	2 1/2" 5"	S. 88°E. N. 18° 30' W.	9 32 3/4	1/4 cor. 3" W.Oak Post
D	Elm	8"	N. 58° 30' E.	39 3/4	

Dang
Rose

Sec 21 T14SN R30W

39



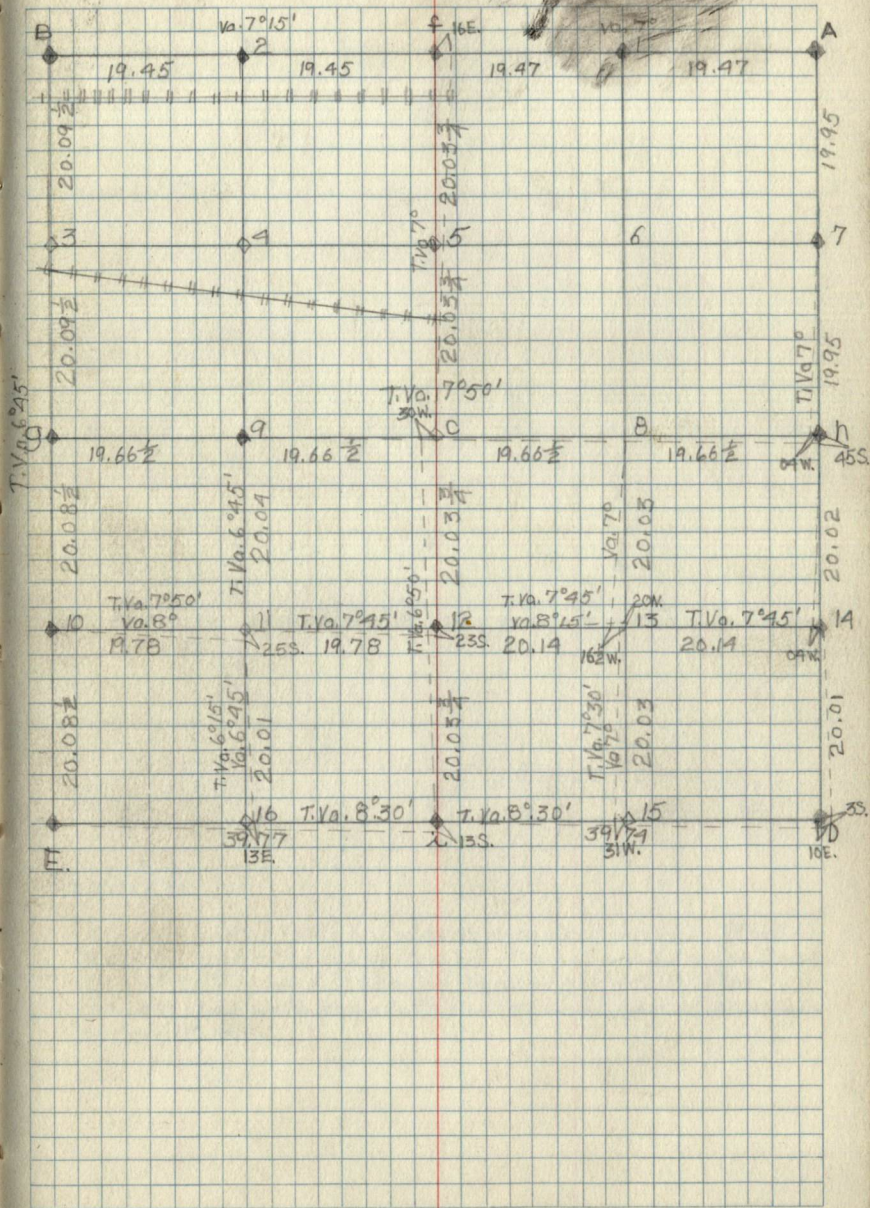
Corner Notes

Cor.	Spec.	Dia.	Bearing	Dist.	Remarks
	W. Pine	10"	N. 78° W.	32 1/2	
i	W. Oak	8"	S. 49 1/2° E.	45 1/2	
	Birch	7"	S. 64° W.	14	Poster
	W. Oak	5"	N. 26° E.	21 1/4	
h	W. Pine	8"	S. 36° W.	17 1/2	
	Aspen	12"	N. 61° W.	14 1/2	Poster
	W. Pine	7"	N. 42° E.	44 1/2	
D.	W. Pine	6"	S. 78° E.	43	
	W. Pine	8"	S. 16° W.	30	
	Birch	8"	N. 35° W.	38 1/2	
	Birch	8"	N. 53° E.	32 1/2	Poster

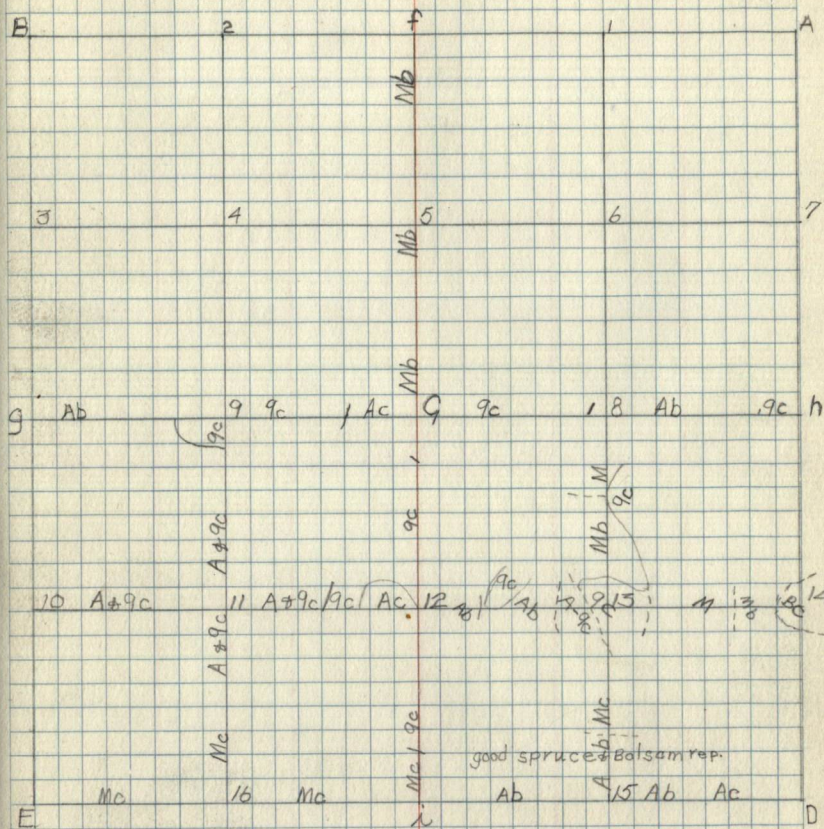
14 GLO. Iron Pipe Br. Caped

7 GLO. Iron Pipe Br. Caped

41
Sec 26 T145N R30W.

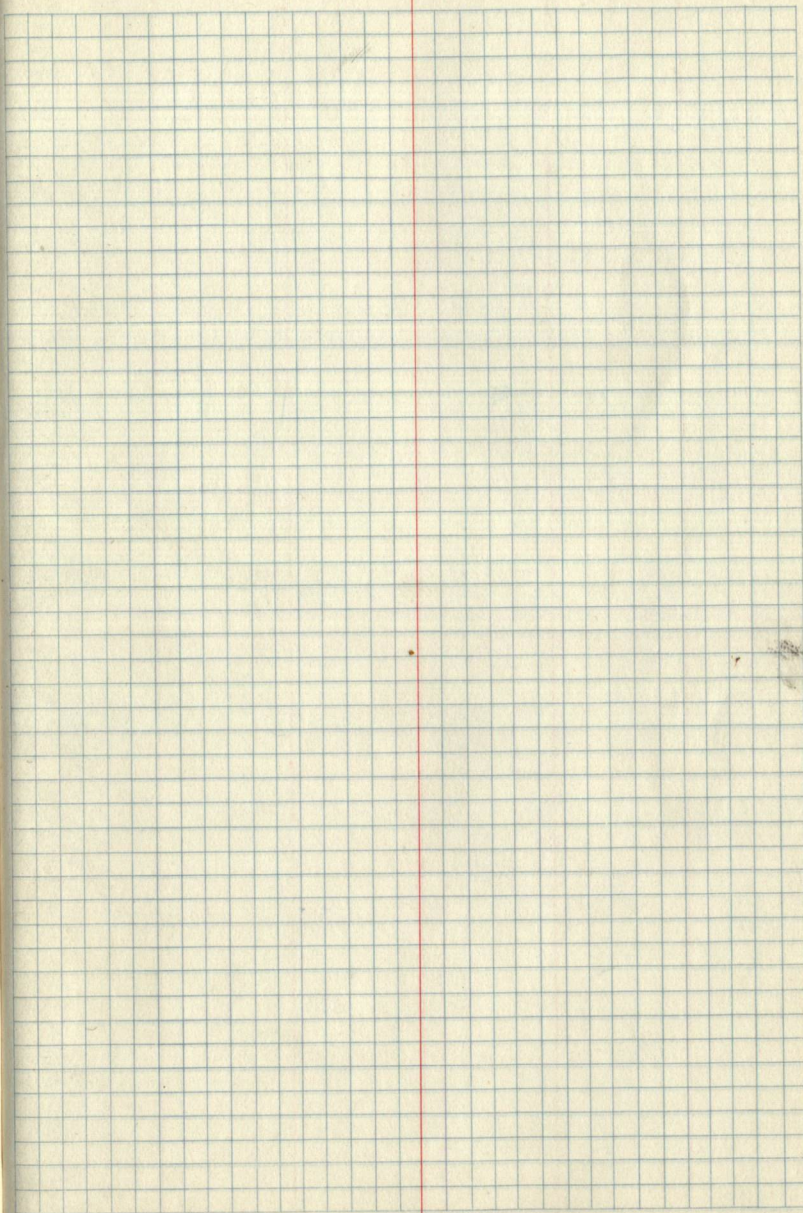
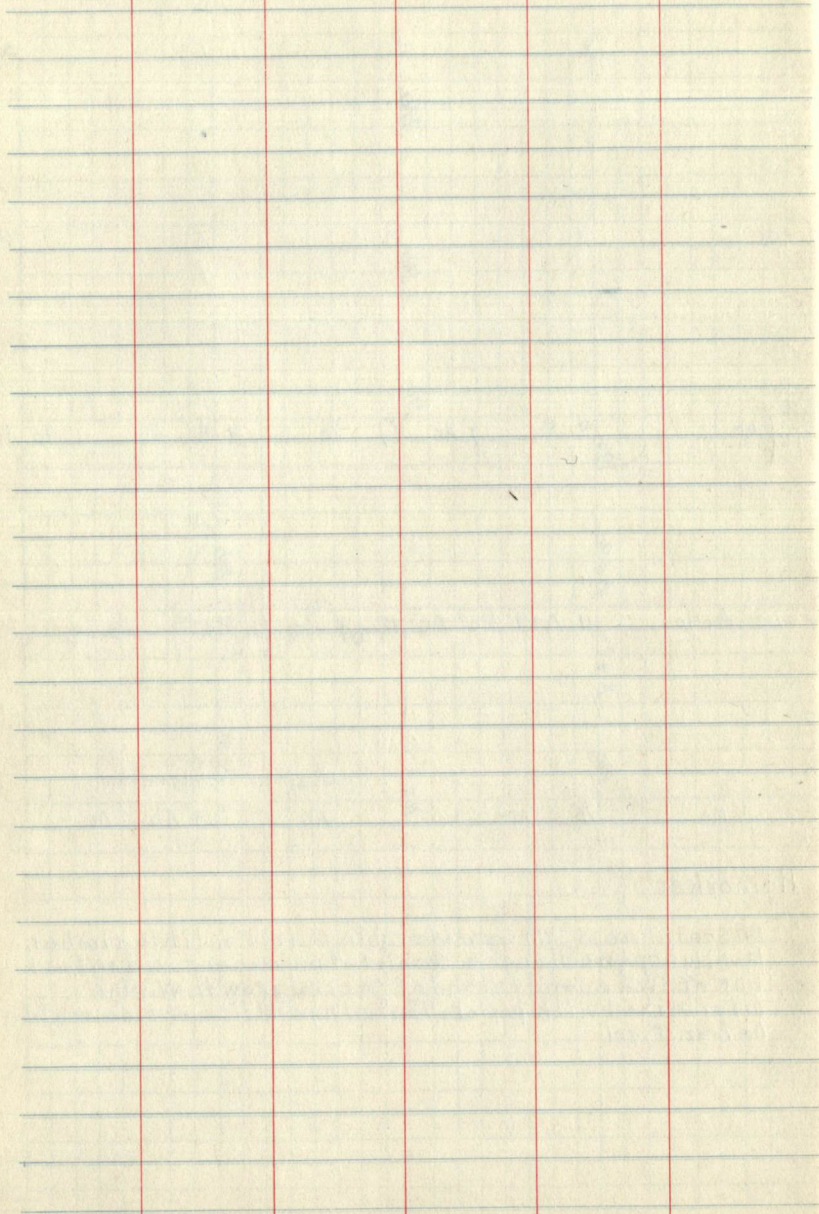


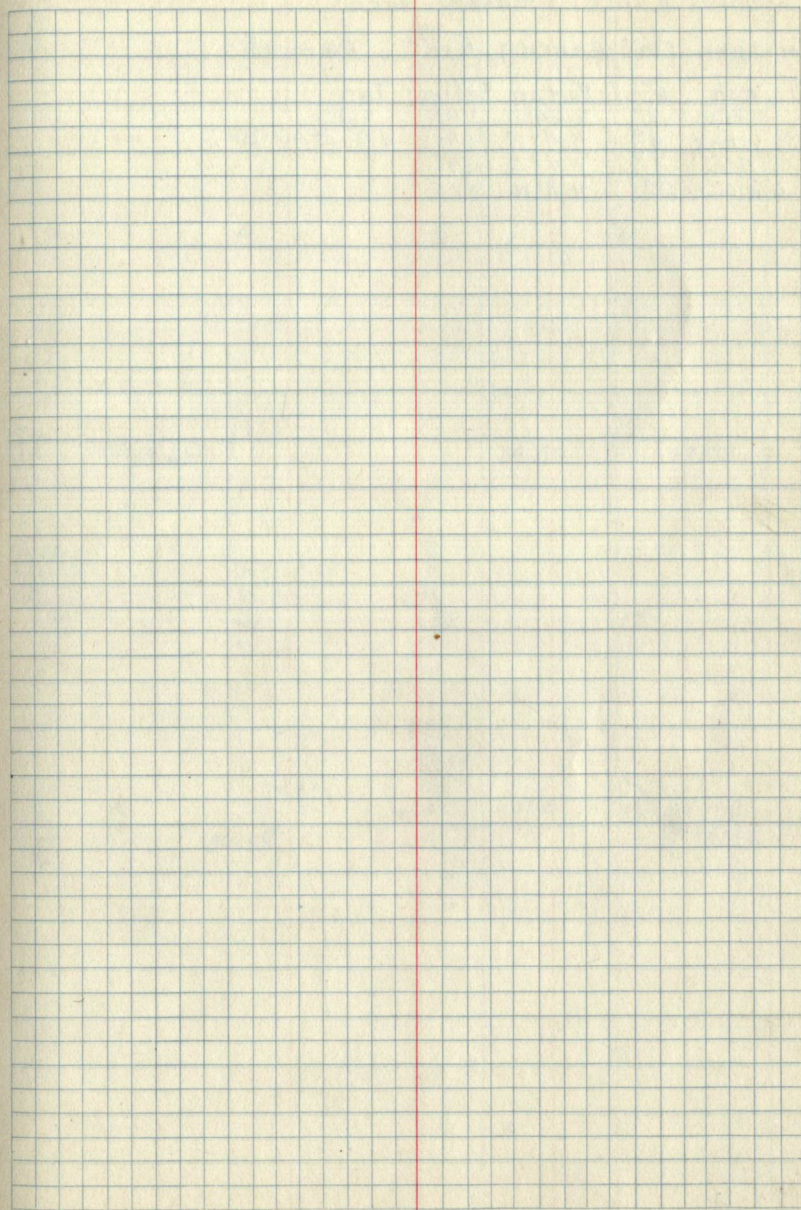
Type Map

42
Sec 22 T145N R30W

Remarks:

On south line of SW $\frac{1}{4}$ considerable merchantable timber. Mostly aspen although quite a lot of mixed hardwood on East line of SW $\frac{1}{4}$ a dandy stand of second growth W. pine intermixed with poplar. Thinning and liberation would be beneficial.

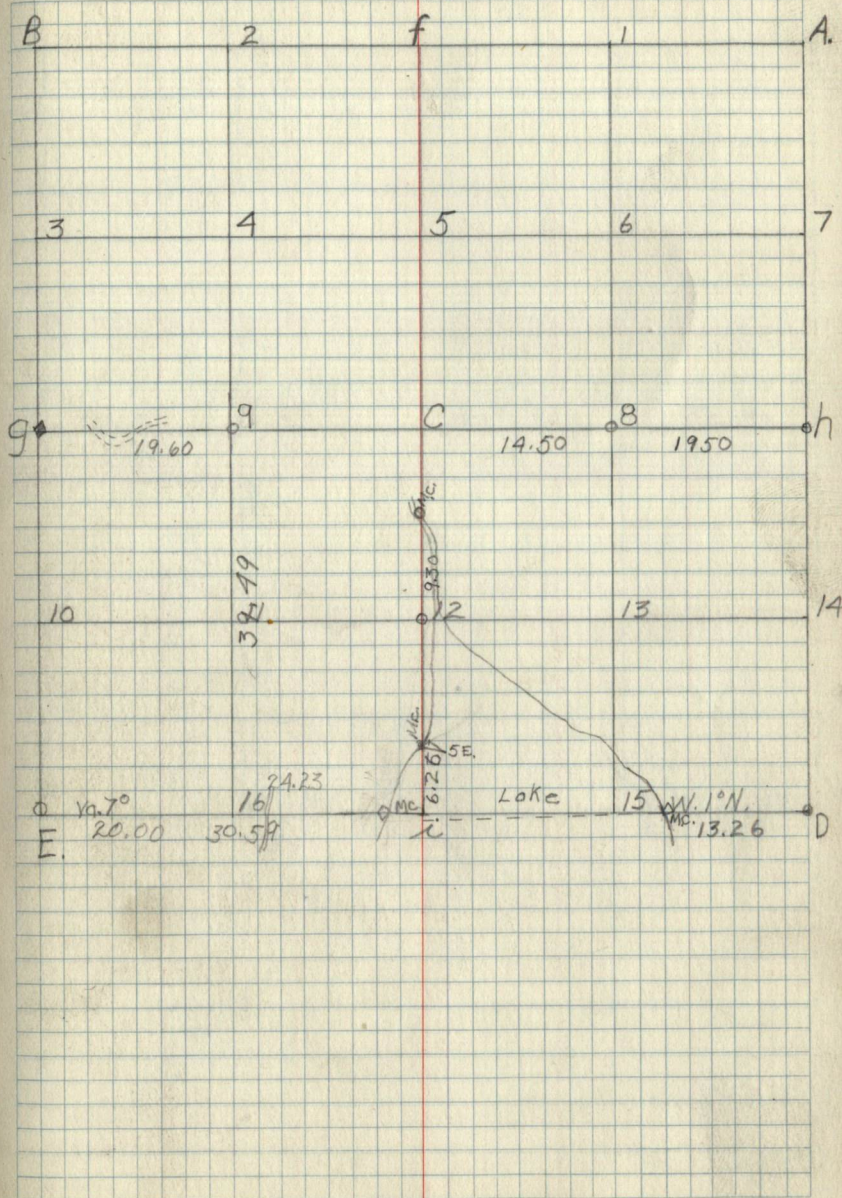




Corner Notes

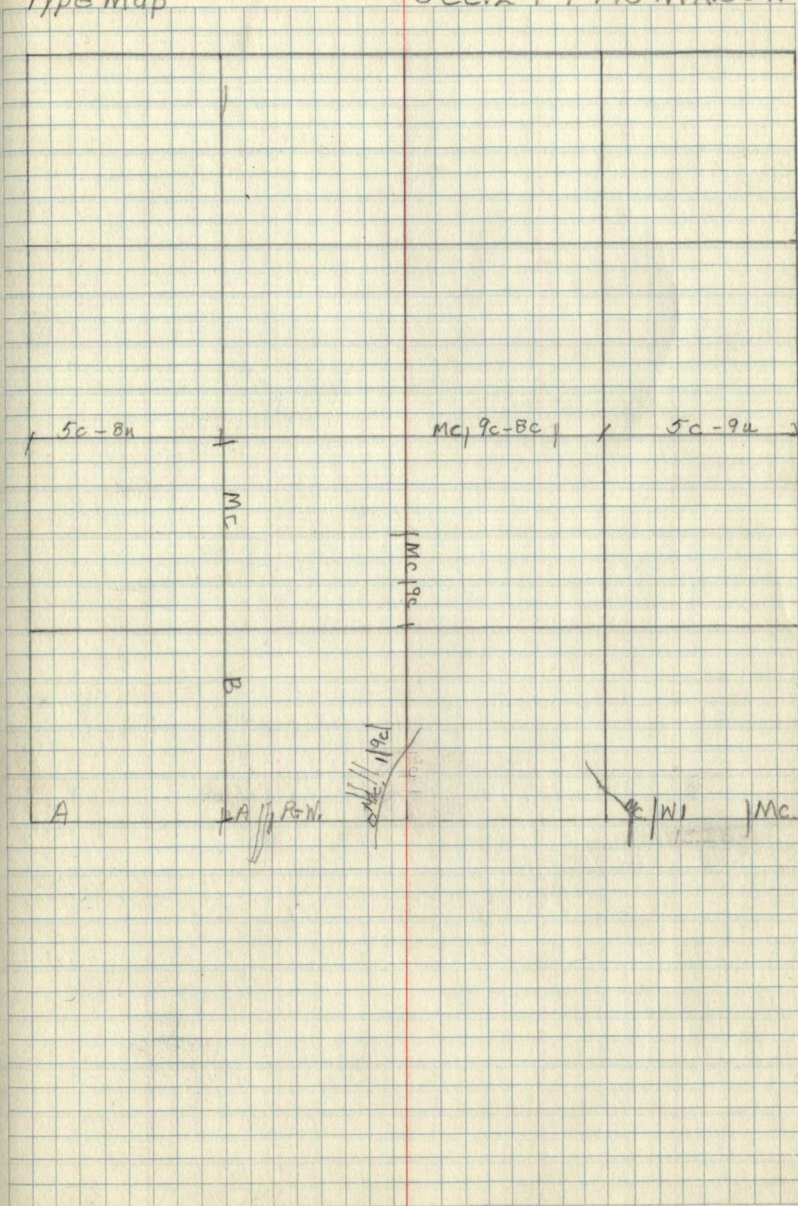
cor.	Spec.	dia.	Bearing	dist.	Remarks
9	Ash	6"	Put on Yellow Tag		
	R. Pine	14"	S. 69° W.	3.95	
16	W. Oak	4"	N. 4° W.	69	W to S-25-B-T.
M.C.	Ash	5"	W. 2° S.	59	
W. of	W. Pine	28"	N. 4° W.	2.25	

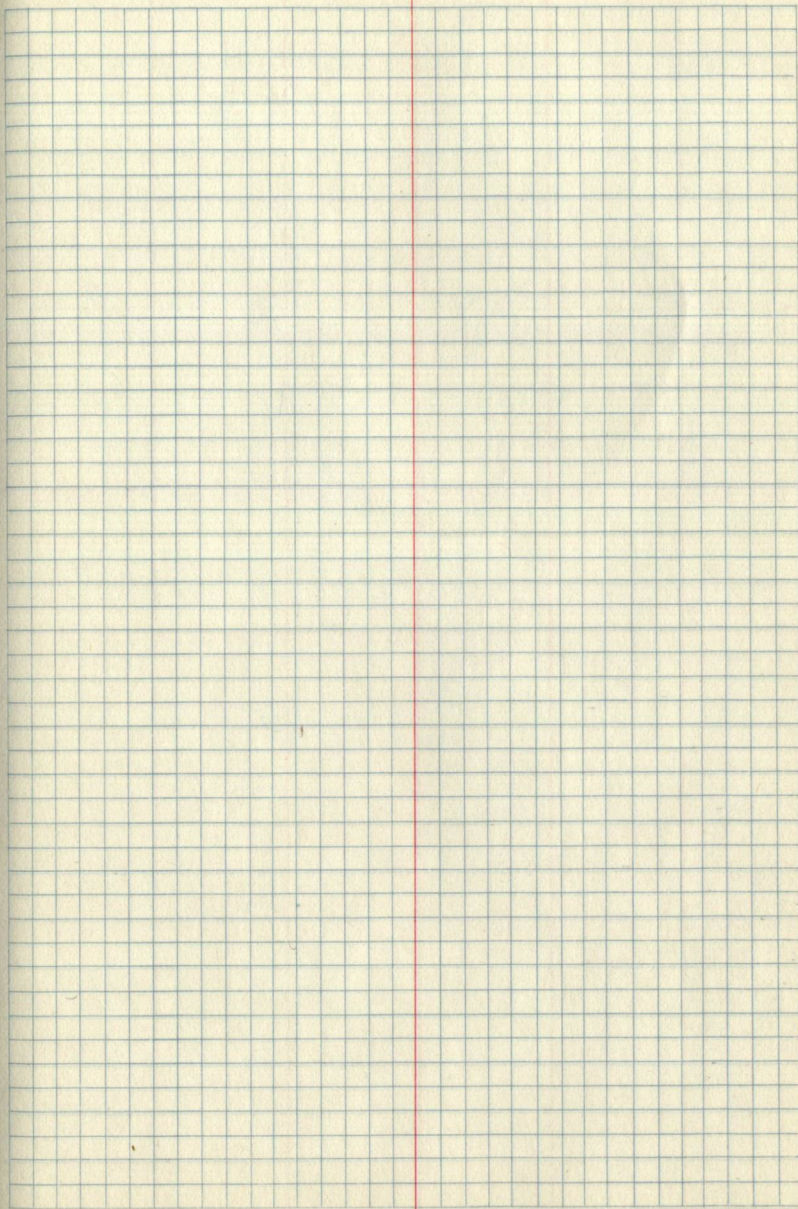
Sec. 24 - T145 N. R. 30 W.

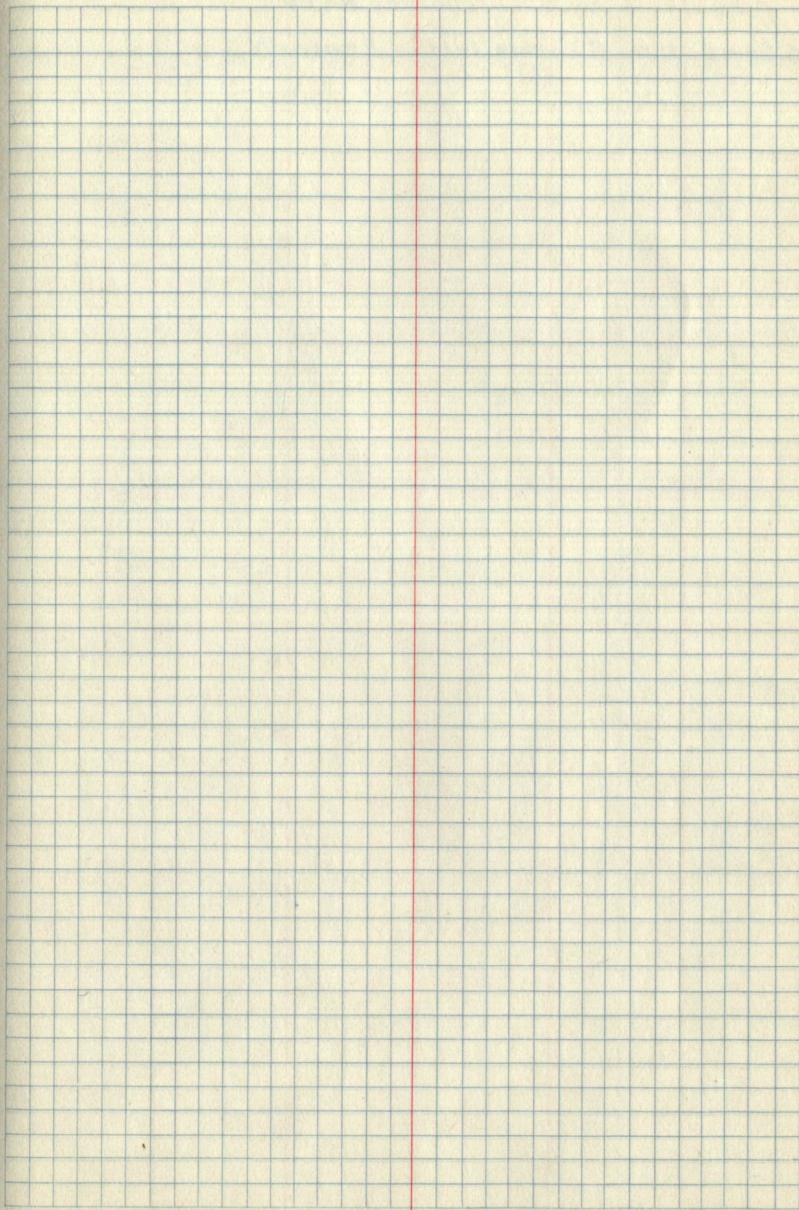


Type Map

Sec. 24-T145N.R.30W







Corner Notes

Cor. Spec.	Dir.	Bearing	Dist.	Remarks

Sp. 26 T. 44 N. R. 31 W.

20.00
25.0020.00
25.00

20.00

50 E

50 E

50 E

5b-5c

A

B

C

D

E

F

G

H

I

J

K

L

M

N

O

P

Q

R

S

T

U

V

W

X

Y

Z

AA

AB

AC

AD

AE

AF

AG

AH

AI

AJ

AK

AL

AM

AN

AO

AP

AQ

AR

AS

5b

5c

5d

5e

5f

5g

5h

5i

5j

5k

5l

5m

5n

5o

5p

5q

5r

5s

5t

5u

5v

5w

5x

5y

5z

5aa

5ab

5ac

5ad

5ae

5af

5ag

5ah

5ai

5aj

5ak

5d

5e

5f

5g

5h

5i

5j

5k

5l

5m

5n

5o

5p

5q

5r

5s

5t

5u

5v

5w

5x

5y

5z

Corner Notes

Cor.	Spec.	Dia.	Bearing	Dist.	Remarks
i.	ELM	8"	N. 32 1/2° E.	30.5	GLO. Br. Iron 1" x 5"
	W. Oak	5"	S. 67 1/2° W.	74.3	No Scribing on Oak
	W. Pine	6"	N. 52° E.	46	
D.	Aspen	10"	S. 50 1/2° E.	13 1/4	GLO Br. Cement 5" x 5"
	Balsam	6"	S. 26 1/4° W.	63 3/4	
	W. Pine	10"	N. 89 1/4° W.	77	
	Aspen	14"	S. 44° W.	5 1/2	Poster
	W. Pine	5"	N. 40° E.	83	
h.	W. Oak	5"	S. 21 1/4° W.	29	GLO. Br. Iron 1" x 3"

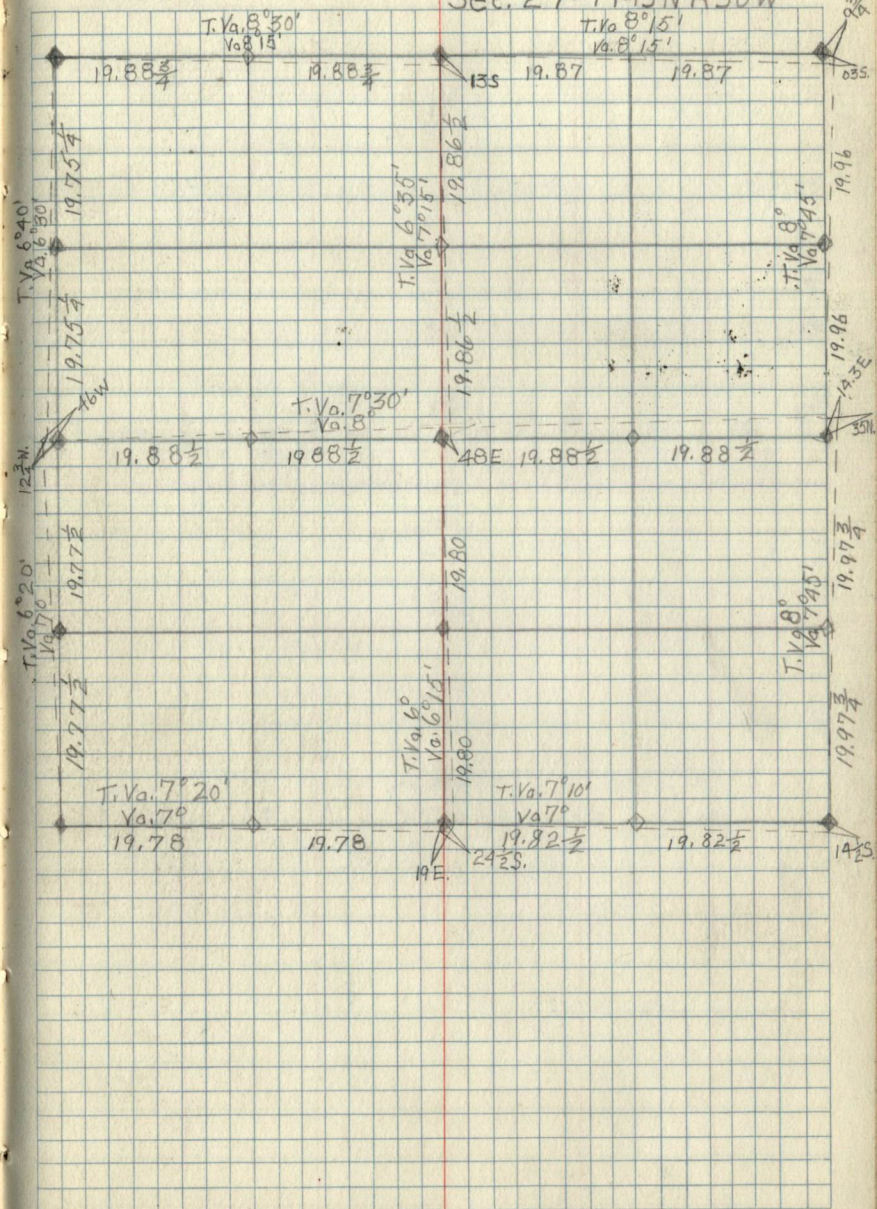
527
534

527 528
534 535

Compassman
C. Mendenhall

51

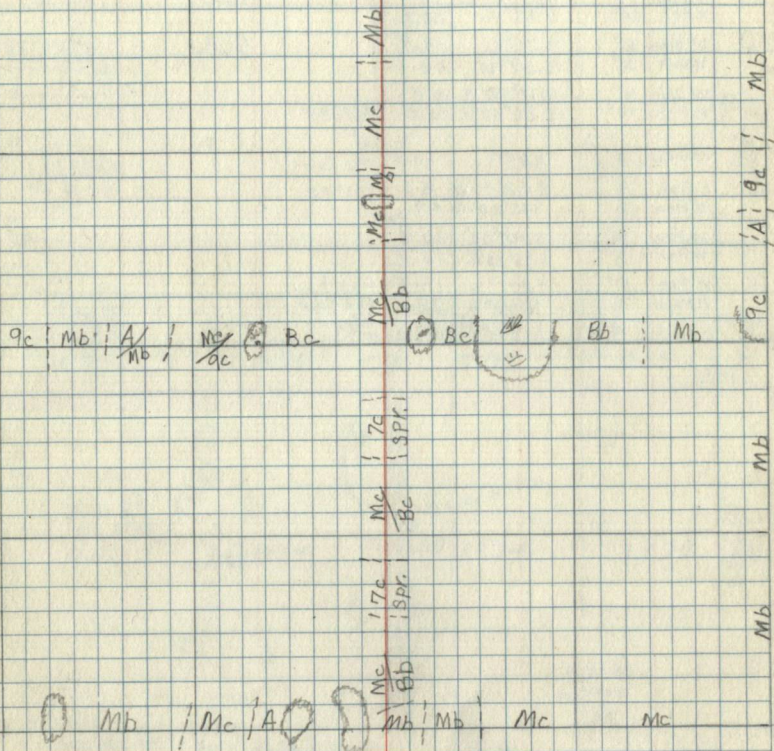
Sec. 27-T145NR30W



Compassman
C. Mendenhall
Type Map

52

Sec. 27-T145NR30W



Corner Notes

Cor.	Spec.	Dia.	Bearing	Dist.	Remarks
i	W. Pine	16"	S. 8° 30' E.	52.8	GLO.
	W. Pine	14"	N. 3° 30' E.	77.8	
	R. Oak	14"	N. 64° E.	47.3	
D	W. Pine	6"	S. 32° E.	59.0	GLO.
	W. Oak	3"	S. 57° W.	28	
	W. Oak	4"	N. 12° 30' W.	21.5	
E	R. Oak	10"	S. 86° 30' W.	32.8	Poster
	Iron Wood	3"	N. 25° E.	14.5	
	R. Oak	8"	S. 52° 30' E.	8.5	
h	R. Pine	8"	S. 35° 30' W.	49	Poster
	W. Pine	14"	N. 44° 30'	65.5	
g	W. Oak	5"	N. 31° 30' E.	16.8	Poster
	W. Pine	10"	N. 37° W.	18.3	
	H. Maple	6"	N. 69° W.	28.5	
	H. Maple	4"	N. 7° 15' E.	47.5	

 S28 S27
 S33 S34

 S29 S28
 S32 S33

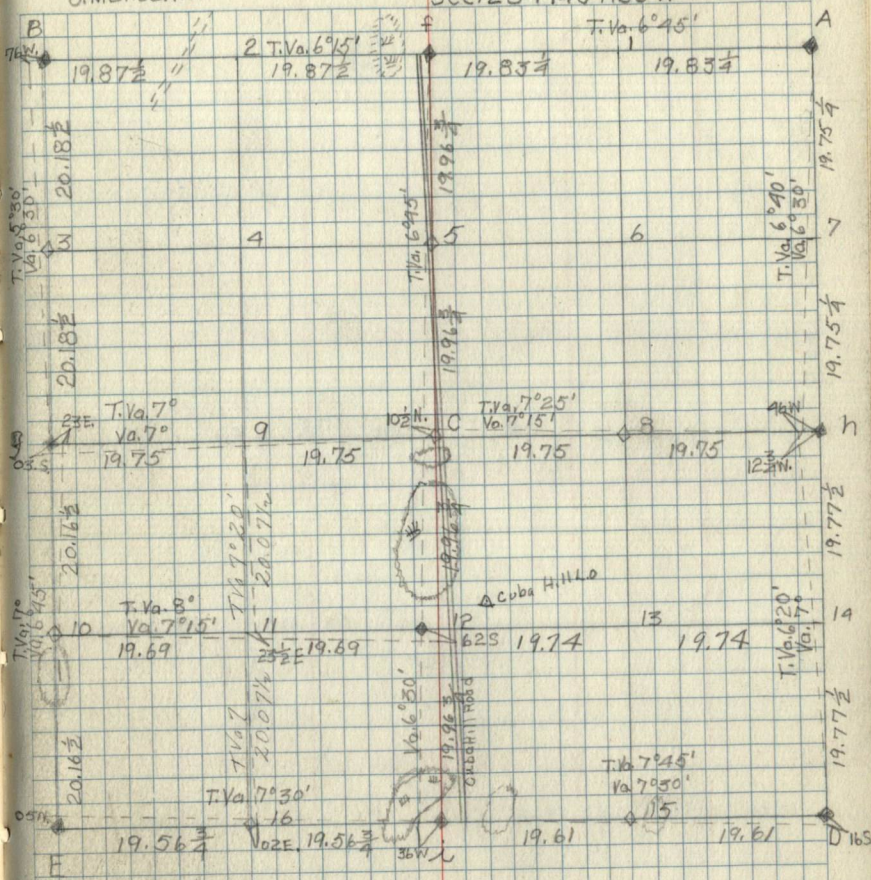
S28 S27

S27 S28

 Compassmen
 D. B. Rose
 C. Mendenhall

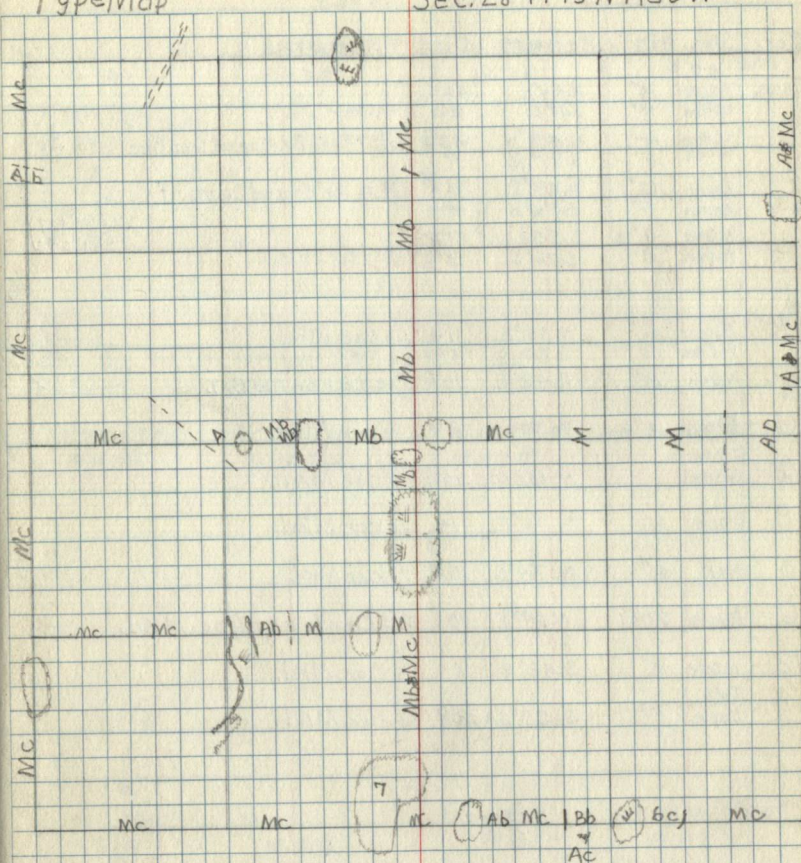
53

Sec. 28 T145 R30W


 Note:
 East and North Line of SWSW Sec. 28 Corrected

Type Map

Sec. 28 T145N R30W



Remarks:

Most of the Mc type runs heavy with merchantable aspen. Scattered Norway and white pine and considerable balsam about sapling size. SW¹/₄ has a good many small swamps in it some of which have quite a little black spruce and tamarack in them also ash. Land is quite rolling

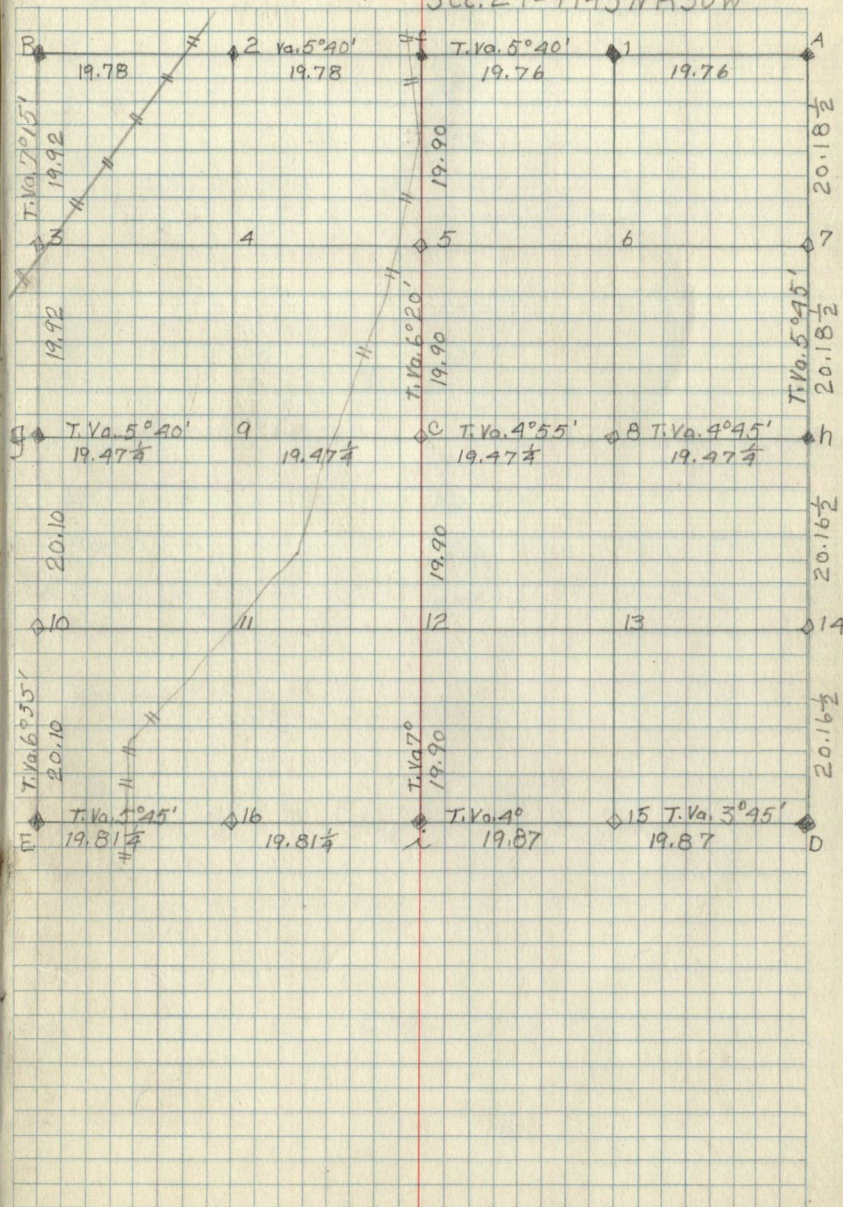
Corner Notes

Cor.	Spec.	Dia	Bearing	Dist.	Remarks
3 1/2	Mkd.				
16	Aspen	1 1/2"	N. 53° E.	48 1/2	Poster
	W. Pine	10"	S. 49° E.	22	
9	W. Pine	3"	N. 69 1/2° W.	48 3/4	GLO. Br. Caped Iron Pipe (6"x6") (S30 S29)
	W. Oak	3"	N. 77° W.	17	
E.	Aspen	12"	N. 11 1/2° E.	36 1/4	GLO. Br. Caped Cement 6"x6"
	Aspen	5"	S. 76° E.	15 1/2	
	W. Oak	4"	S. 25 1/2° W.	31 1/2	
	Aspen	5"	S. 76° E.	15 1/2	
					Poster on B.T. (S30 S29 S31 S32)
10	Aspen	6"	N. 55° E.	11 1/4	1/6 cor. Mkd.
	W. Pine	10"	S. 84 1/2° E.	33	
i	W. Oak	10"	N. 42° E.	16	Poster on Old B.T. (S29 S32)
15	Birch	4"	N. 30 1/2° W.	27	1/6 cor. Mkd.
16	Bass Wood		N. 15° E.	15 1/4	1/6 cor. Mkd.
8	Maple	6"	S. 56° E.	19	1/6 cor. Mkd.
5	Ash	6"	N. 34° E.	15 1/4	1/6 cor. Mkd.
C	Maple	20"	N. 64° E.	10	1/2 S. Center of Sec. Mkd.
12	W. Oak	8"	S. 42° E.	7	1/6 cor. Mkd.
9	TWIN Maple	5"	S. 55° E.	12 1/2	1/6 cor. Mkd.

Compassman
J.A. Gjelhaug

55

Sec. 29-T145 NR 30W

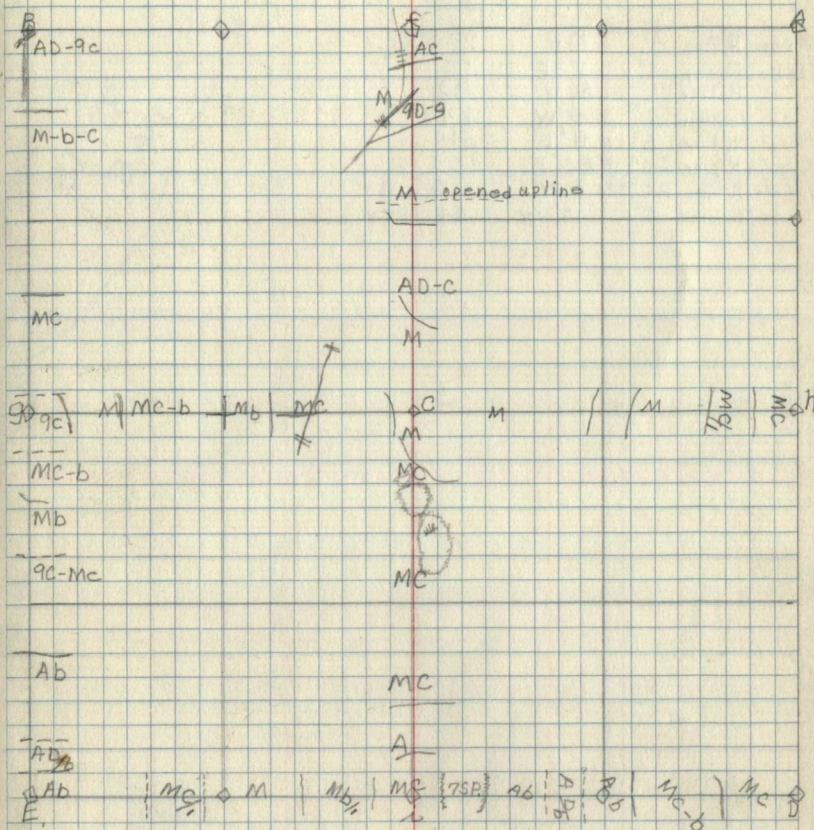


Compassman
J.A. Gjilhaug

56

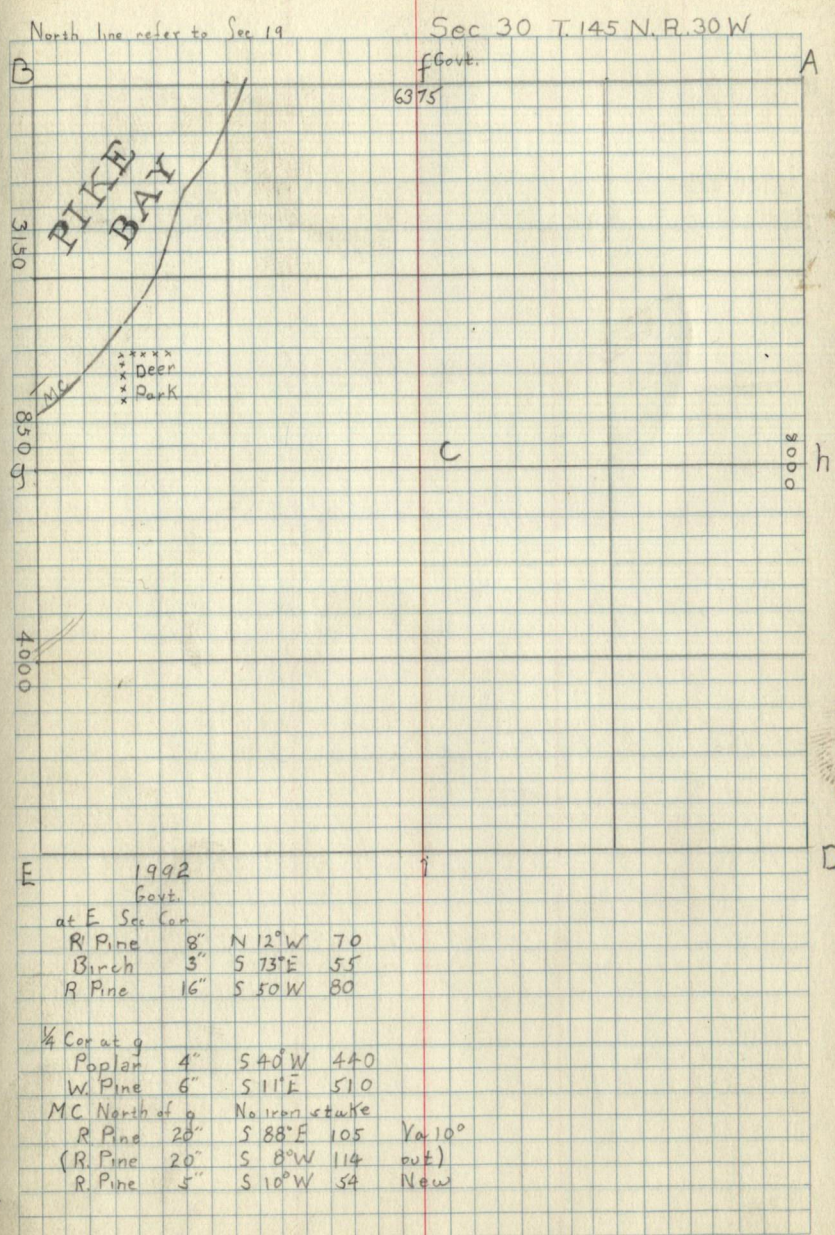
Type Map

Sec. 29-T145NR30W



Corner Notes

Cor	Sp	Dim	Bearing	Dist	Remarks
At E. Sec	R. Pine	8"	N 12° W	70	
Cor	Birch	3"	S 73° E	55	
	R. Pine	16"	S 50° W	80	
¼ Cor	Poplar	4"	S 40° W	440	
at g.	W. Pine	6"	S 11° E	510	
MC North	R. Pine	20"	S 88° E	105	Var 10°
of g.	R. Pine	20"	S 8° W	114	out
	R. Pine	5"	S 10° W	54	New



PG 58-60

Blank

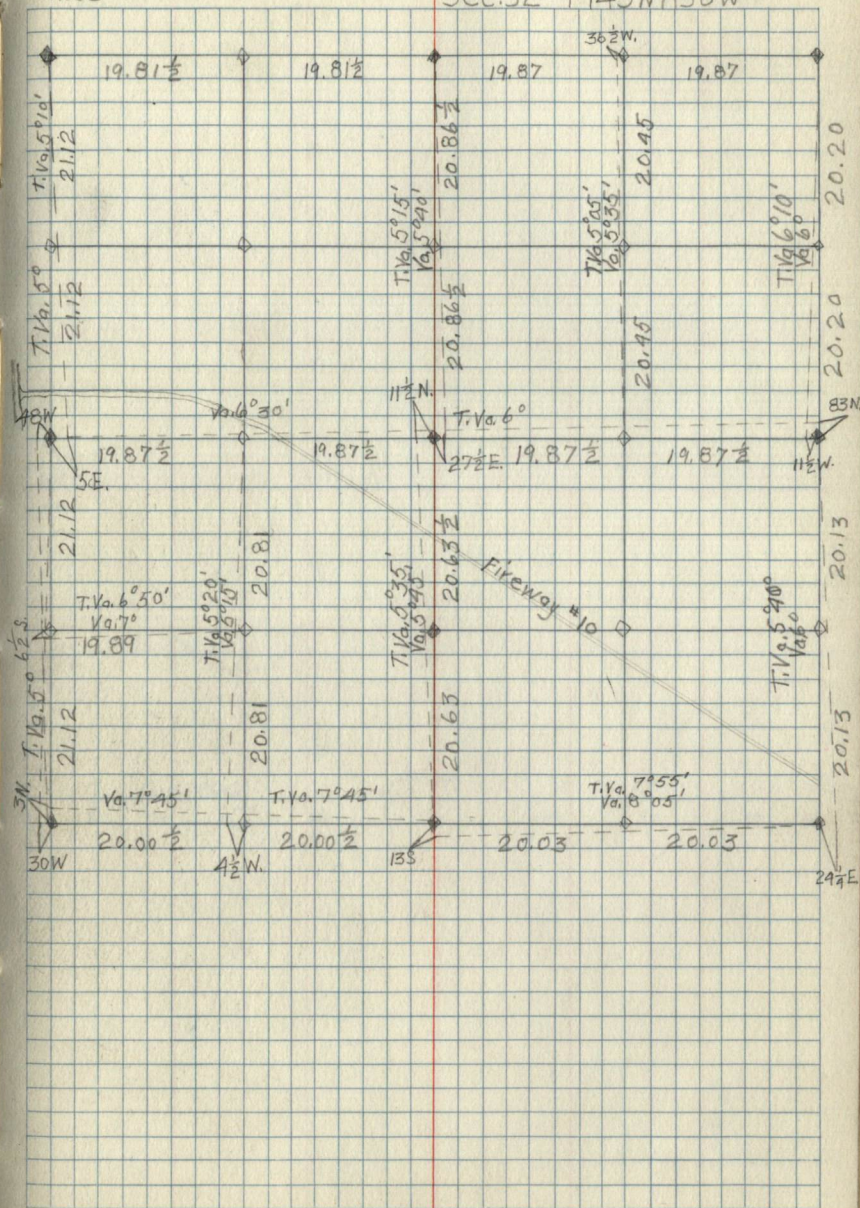
Corner Notes

Cor.	Spec.	Dia	Bearing	Dist.	Remarks
	Aspen	6"	N. 8° E.	123 $\frac{1}{2}$	
9	Aspen	6"	N. 50° W.	30	Poster on B.T.
3	R. Oak	9"	S. 38° E.	14	Set Oak Post
	Aspen	12"	N. 65 $\frac{1}{2}$ ° W.	122 $\frac{3}{4}$	
E	Aspen	12"	N. 54° E.	173 $\frac{1}{2}$	
				$\frac{1}{4}$	
10	W. Oak	12"	N. 60° E.	$\frac{1}{4}$	
	Dead W. Pine	30"	N. 54° W.	35 $\frac{3}{4}$	Old Govt. B.T.
J	W. Birch	10"	N. 15 $\frac{1}{2}$ ° E.	95 $\frac{1}{2}$	(4 532)
	Aspen	6"	N. 77 $\frac{1}{2}$ ° W.	36 $\frac{3}{4}$	
	Aspen	3 $\frac{1}{2}$ "	N. 31° W.	7 $\frac{1}{4}$	Poster

Compassmen
J.A. Gilhous
Mendenhall
Rose

61

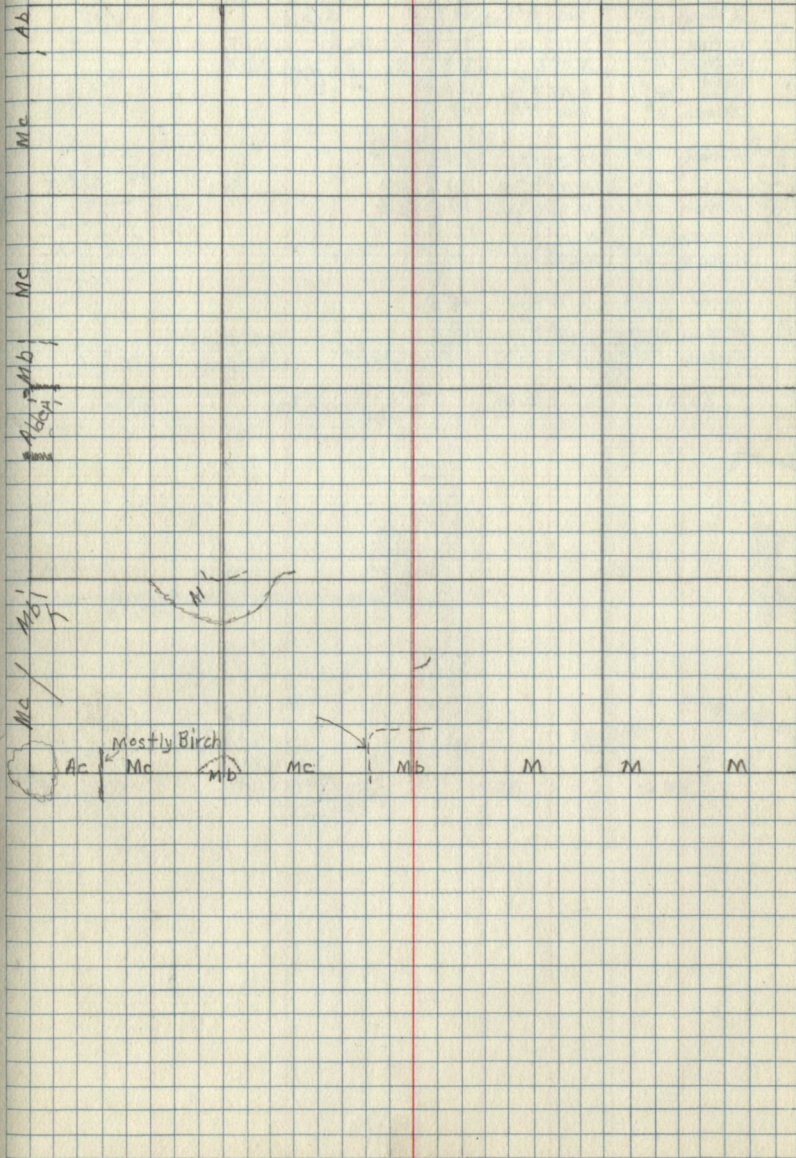
Sec. 32-T145NP30W



Compassman
Rose
Type Map

62

Sec. 32-T145NR30W



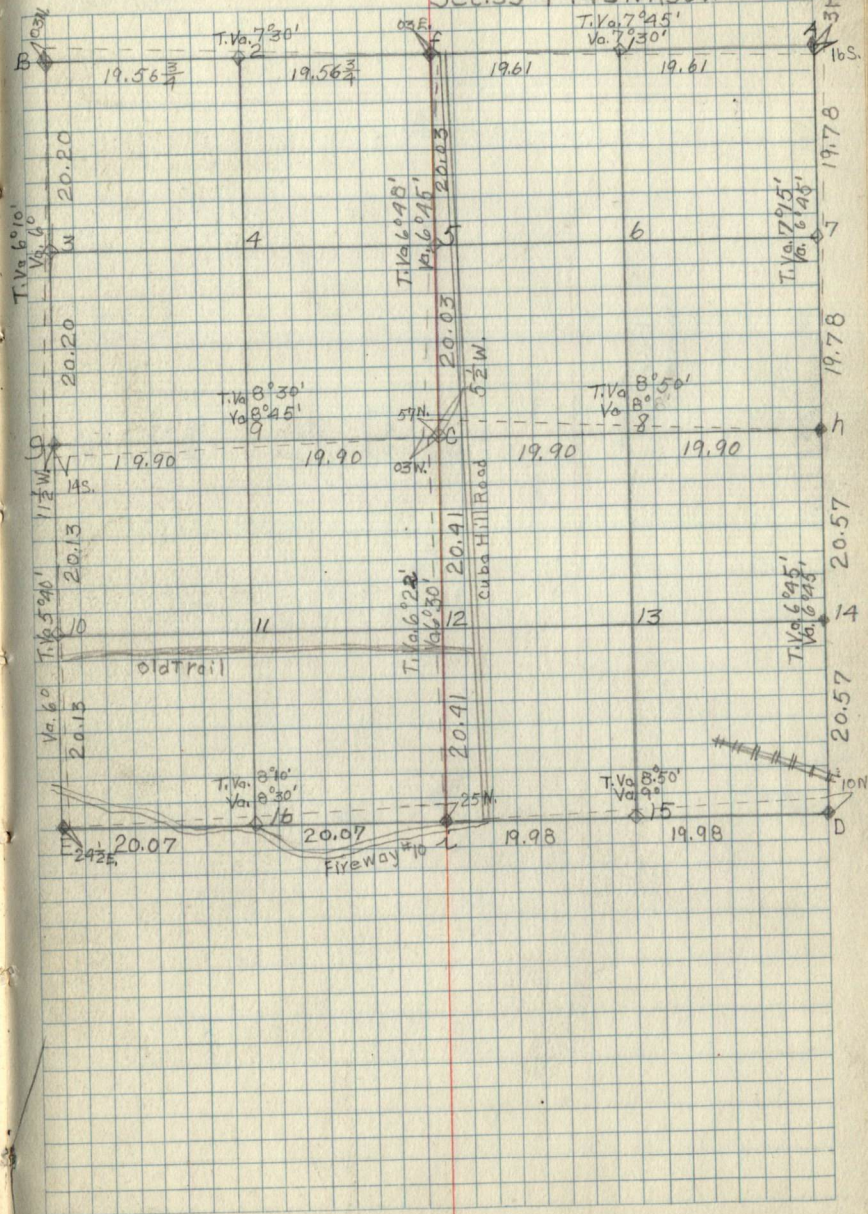
Corner Notes

Cor.	Spec.	Dia.	Bedding	Dist.	Remarks
g	W. Pine	18"	S. 62 $\frac{1}{2}$ ° E.	34 $\frac{3}{4}$	GLO. Br. Iron Pipe 1" x 8" (S32/S33)
	W. Pine	18"	S. 71 $\frac{1}{2}$ ° W.	96 $\frac{1}{2}$	
	W. Birch	10"	N. 40° E.	88	
E.	Dead Elm	12"	N. 46 $\frac{1}{2}$ ° W.	100	GLO. Br. Iron Pipe 2" x 10" (SC S32/S33)
	Aspen	6"	N. 66 $\frac{1}{2}$ ° E.	05	
i	H. Maple	10"	N. 50° E.	24 $\frac{3}{4}$	(SC S33)
	Ash	10"	N. 73 $\frac{1}{2}$ ° W.	154 $\frac{1}{4}$	
D	H. Maple	8"	N. 31 $\frac{1}{2}$ ° W.	69 $\frac{3}{4}$	(SC S33/S34)
	H. Maple	8"	N. 11° E.	86 $\frac{3}{4}$	
h	Tom.	8"	S. 76 $\frac{1}{2}$ ° W.	42 $\frac{1}{4}$	(SC S33/S34)
	Aspen	10"	S. 38 $\frac{1}{2}$ ° E.	38 $\frac{1}{2}$	
	Aspen	8"	S. 30 $\frac{1}{2}$ ° W.	5 $\frac{3}{4}$	

Compassman
D. B. Rose

63

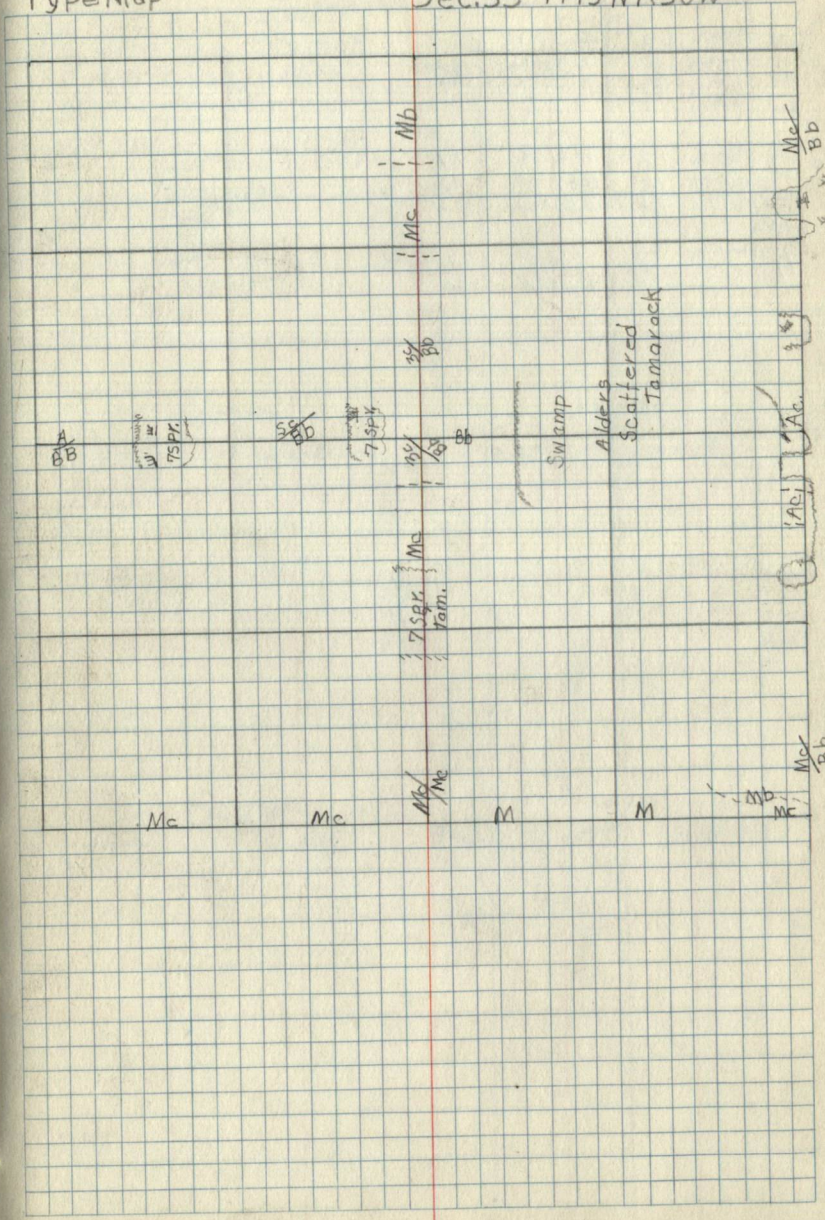
Sec. 33-T145NR30W



Compassman
D.B. Rose

Type Map

Sec. 33-T145NR30W



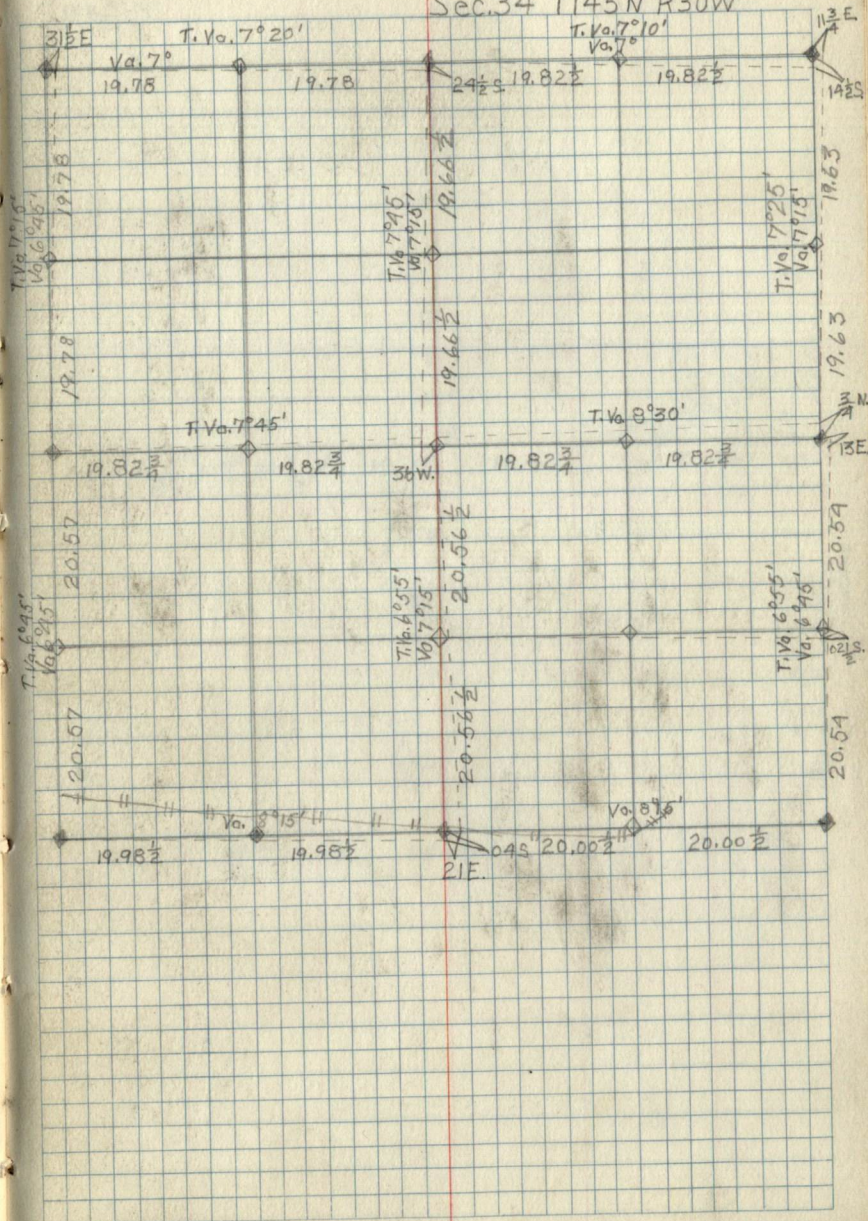
corner Notes

Cor.	Spec.	Dia.	Bearing	Dist.	Remarks
i	Aspen	8"	N52°30'W	30 1/2	old BT (1/4 S34)
	w Pine	30"	N69°45'E	31	
	Paster Aspen	6"	N10°E	5 1/2	
D	Dead Birch	12"	N61°E	17	old BT (S34/S35)
	y. Birch	16"	N87°E	42	
	w Pine	26"	N59°W	106 1/2	
h	w Pmc	24	N78°E	96 3/4	(1/4 S34/S35)
	" "	18	N1°E	80	
	" "	20	N76°W	30	

Compassman
D. B. Rose

65

Sec. 34 T145N R30W

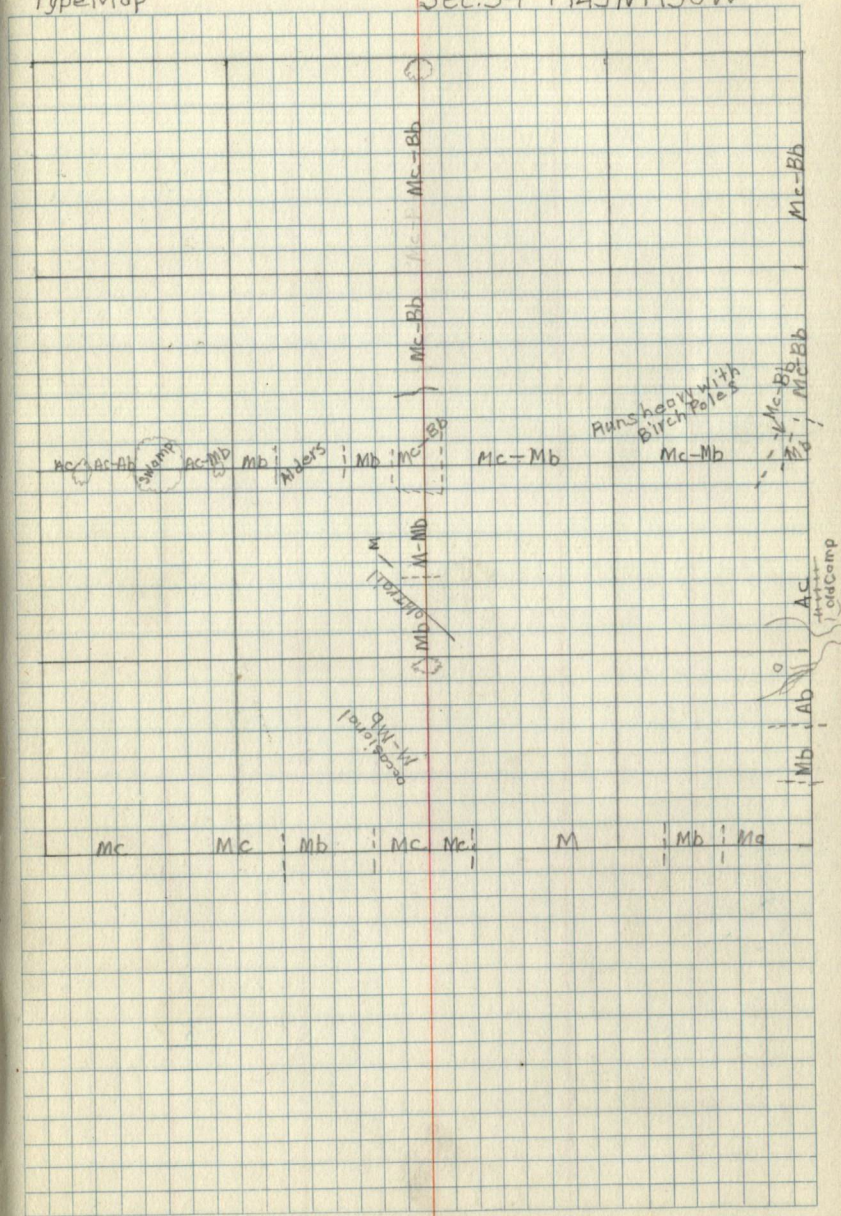


Compassman
Rose

66

Type Map

Sec. 34 T145NR30W



PG 67-77.

Blank

$$\begin{array}{r}
 4.75 \\
 \hline
 2750 \\
 \hline
 1750 \\
 \hline
 20 \\
 \hline
 3
 \end{array}$$

$$\begin{array}{r}
 22.5 \\
 \hline
 7.92 \\
 \hline
 450 \\
 \hline
 2025 \\
 \hline
 2750 \\
 \hline
 15 \\
 \hline
 17.
 \end{array}$$

18'
30'

$$\begin{array}{r}
 37.5 \\
 \hline
 7.92 \\
 \hline
 75 \\
 \hline
 3375 \\
 \hline
 2625 \\
 \hline
 291 \\
 \hline
 2
 \end{array}$$