

T145N R28W

DIETZGEN
MINING

MINING
TRANSIT BOOK

No. 4221

ccc 18

EUGENE DIETZGEN CO.

DRAWING MATERIALS, MATHEMATICAL and
SURVEYING INSTRUMENTS

Chicago New York San Francisco New Orleans Pittsburg Toronto

Distances from Center of Roadway for Cross-Sectioning
Roadway 16 feet wide. Side Slopes 1 on 1.
For Single Track Embankment.

H	0	.1	.2	.3	.4	.5	.6	.7	.8	.9	H
0	8.0	8.1	8.2	8.3	8.4	8.5	8.6	8.7	8.8	8.9	0
1	9.0	9.1	9.2	9.3	9.4	9.5	9.6	9.7	9.8	9.9	1
2	10.0	10.1	10.2	10.3	10.4	10.5	10.6	10.7	10.8	10.9	2
3	11.0	11.1	11.2	11.3	11.4	11.5	11.6	11.7	11.8	11.9	3
4	12.0	12.1	12.2	12.3	12.4	12.5	12.6	12.7	12.8	12.9	4
5	13.0	13.1	13.2	13.3	13.4	13.5	13.6	13.7	13.8	13.9	5
6	14.0	14.1	14.2	14.3	14.4	14.5	14.6	14.7	14.8	14.9	6
7	15.0	15.1	15.2	15.3	15.4	15.5	15.6	15.7	15.8	15.9	7
8	16.0	16.1	16.2	16.3	16.4	16.5	16.6	16.7	16.8	16.9	8
9	17.0	17.1	17.2	17.3	17.4	17.5	17.6	17.7	17.8	17.9	9
10	18.0	18.1	18.2	18.3	18.4	18.5	18.6	18.7	18.8	18.9	10
11	19.0	19.1	19.2	19.3	19.4	19.5	19.6	19.7	19.8	19.9	11
12	20.0	20.1	20.2	20.3	20.4	20.5	20.6	20.7	20.8	20.9	12
13	21.0	21.1	21.2	21.3	21.4	21.5	21.6	21.7	21.8	21.9	13
14	22.0	22.1	22.2	22.3	22.4	22.5	22.6	22.7	22.8	22.9	14
15	23.0	23.1	23.2	23.3	23.4	23.5	23.6	23.7	23.8	23.9	15
16	24.0	24.1	24.2	24.3	24.4	24.5	24.6	24.7	24.8	24.9	16
17	25.0	25.1	25.2	25.3	25.4	25.5	25.6	25.7	25.8	25.9	17
18	26.0	26.1	26.2	26.3	26.4	26.5	26.6	26.7	26.8	26.9	18
19	27.0	27.1	27.2	27.3	27.4	27.5	27.6	27.7	27.8	27.9	19
20	28.0	28.1	28.2	28.3	28.4	28.5	28.6	28.7	28.8	28.9	20
21	29.0	29.1	29.2	29.3	29.4	29.5	29.6	29.7	29.8	29.9	21
22	30.0	30.1	30.2	30.3	30.4	30.5	30.6	30.7	30.8	30.9	22
23	31.0	31.1	31.2	31.3	31.4	31.5	31.6	31.7	31.8	31.9	23
24	32.0	32.1	32.2	32.3	32.4	32.5	32.6	32.7	32.8	32.9	24
25	33.0	33.1	33.2	33.3	33.4	33.5	33.6	33.7	33.8	33.9	25
26	34.0	34.1	34.2	34.3	34.4	34.5	34.6	34.7	34.8	34.9	26
27	35.0	35.1	35.2	35.3	35.4	35.5	35.6	35.7	35.8	35.9	27
28	36.0	36.1	36.2	36.3	36.4	36.5	36.6	36.7	36.8	36.9	28
29	37.0	37.1	37.2	37.3	37.4	37.5	37.6	37.7	37.8	37.9	29
30	38.0	38.1	38.2	38.3	38.4	38.5	38.6	38.7	38.8	38.9	30
31	39.0	39.1	39.2	39.3	39.4	39.5	39.6	39.7	39.8	39.9	31
32	40.0	40.1	40.2	40.3	40.4	40.5	40.6	40.7	40.8	40.9	32
33	41.0	41.1	41.2	41.3	41.4	41.5	41.6	41.7	41.8	41.9	33
34	42.0	42.1	42.2	42.3	42.4	42.5	42.6	42.7	42.8	42.9	34
35	43.0	43.1	43.2	43.3	43.4	43.5	43.6	43.7	43.8	43.9	35
36	44.0	44.1	44.2	44.3	44.4	44.5	44.6	44.7	44.8	44.9	36
37	45.0	45.1	45.2	45.3	45.4	45.5	45.6	45.7	45.8	45.9	37
38	46.0	46.1	46.2	46.3	46.4	46.5	46.6	46.7	46.8	46.9	38
39	47.0	47.1	47.2	47.3	47.4	47.5	47.6	47.7	47.8	47.9	39
40	48.0	48.1	48.2	48.3	48.4	48.5	48.6	48.7	48.8	48.9	40

Example—If point is 22.6 ft. above grade, how far should it be from center line to be a slope stake point? Ans. from Table 30.6. For same slopes but other widths of roadbed, correct above figures by one-half difference in width of roadbed; thus in example above, for 20 ft. roadbed distance will be $30.6 + (20 - 16) \div 2$ or 2 ft. added to $30.6 = 32.6$. For slopes of 1 on $1\frac{1}{2}$ see inside of back cover.

Copyright, 1914, by Eugene Dietzgen Co.

The paper stock of this book is made of a high grade 50% rag paper having a water resisting surface and is sewed with Bing Special Enamel Waterproof Thread.

Made in U. S. A.

145-28

Scanned

July 20, 2012

Ranney

1

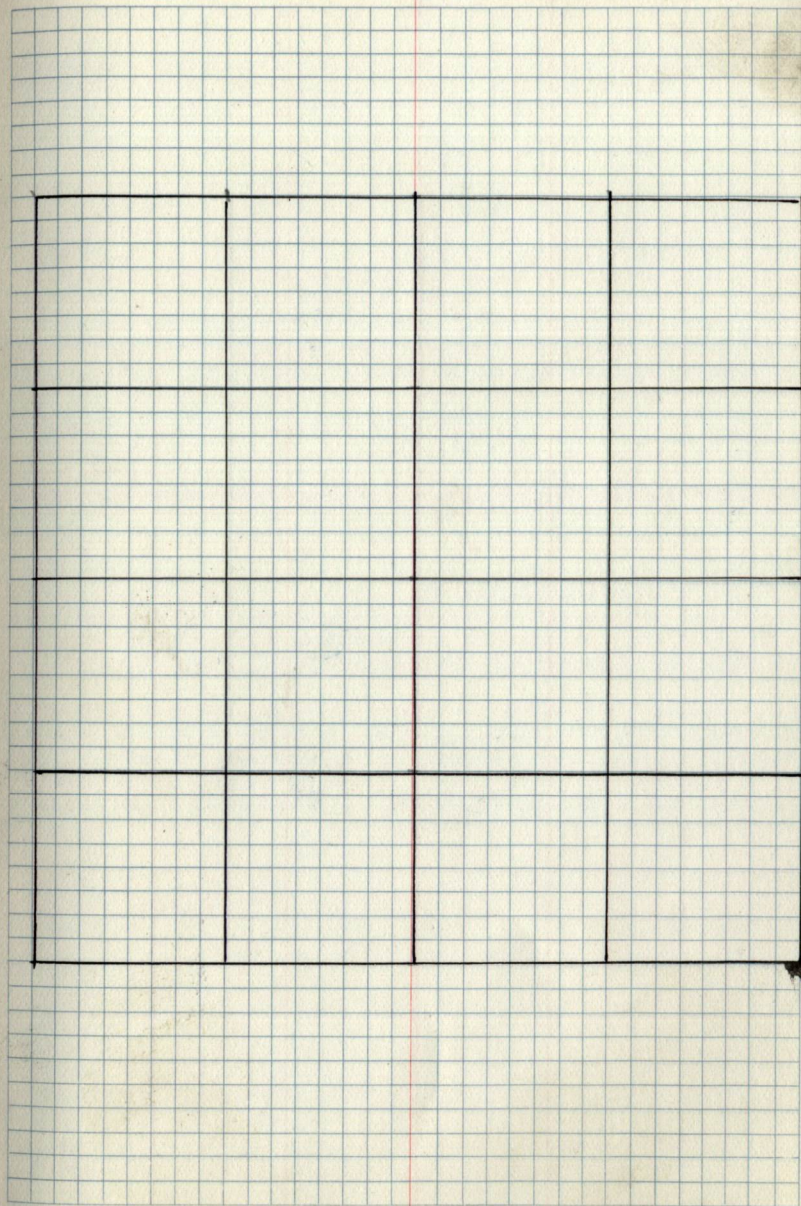
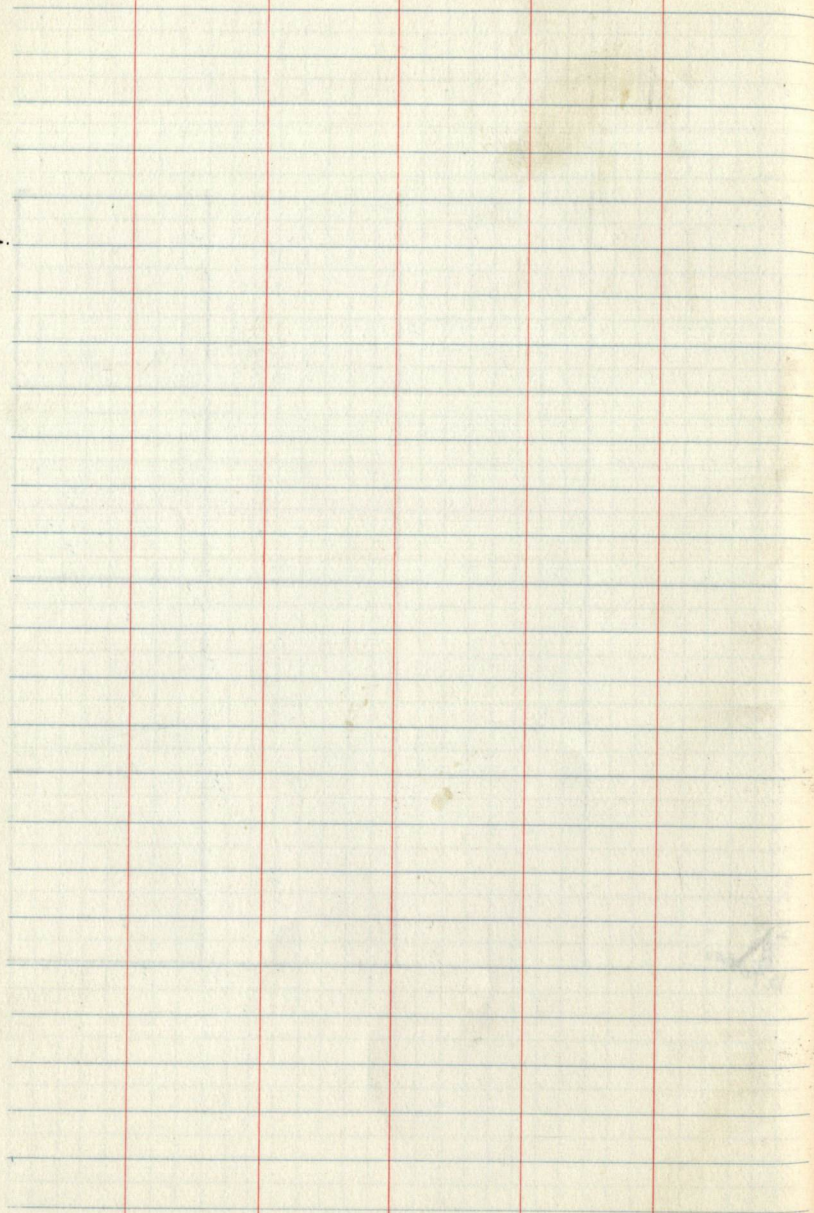
Pages 1-13
are Blank

1

			40.00 12.7°
			20. 12.7°

Pages 14-17
are Blank

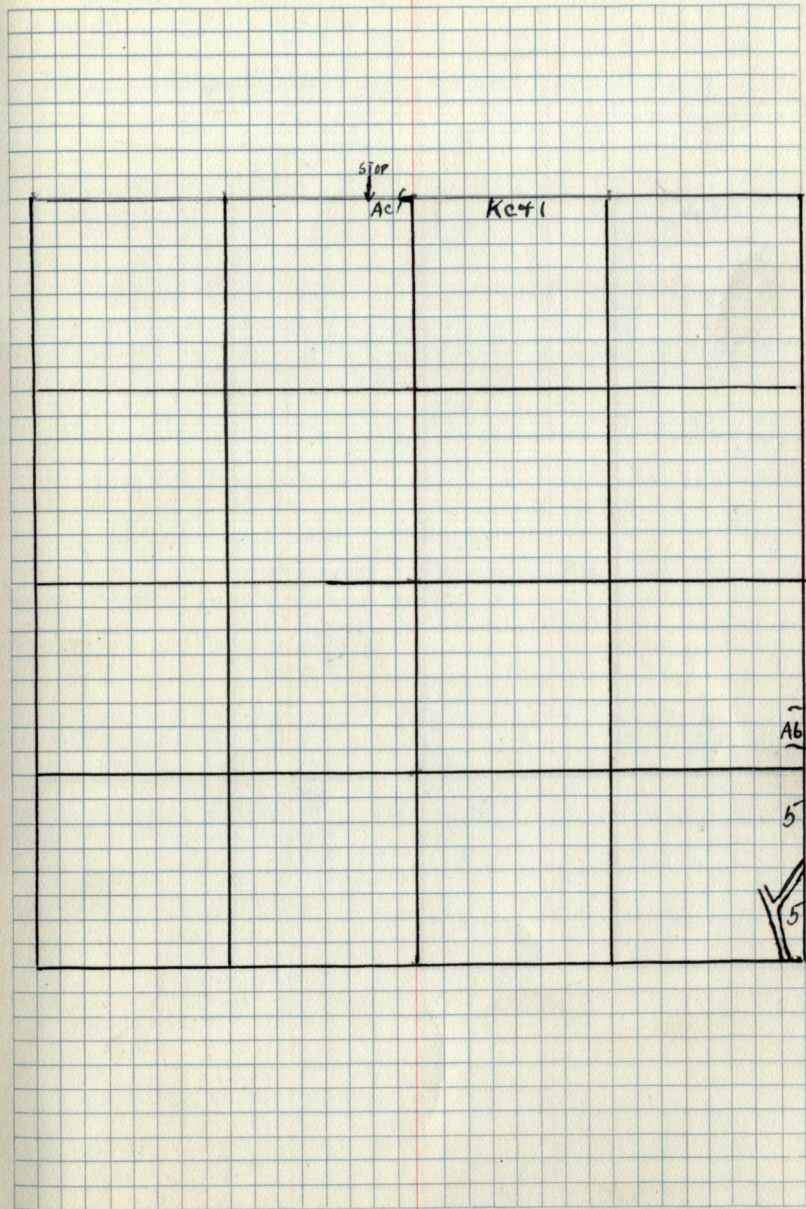
$V_a. 70$
 $V_h. 40$
 $V_d. 93$

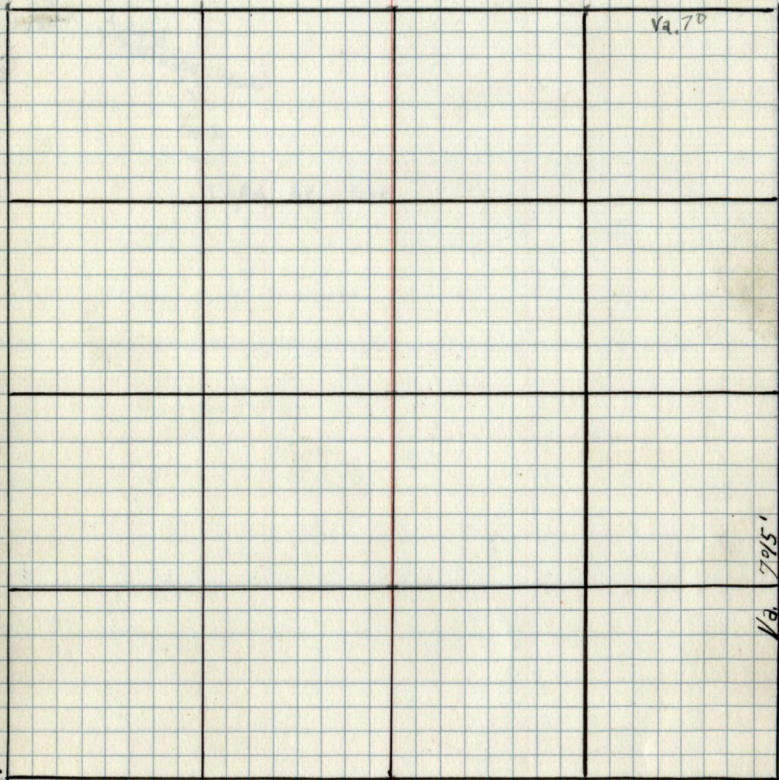


19

18

The page features a grid of 20 columns and 20 rows. A table structure is drawn over the grid, consisting of 4 columns and 4 rows of larger cells. The table is defined by thick black lines. The grid lines are thin and light blue.



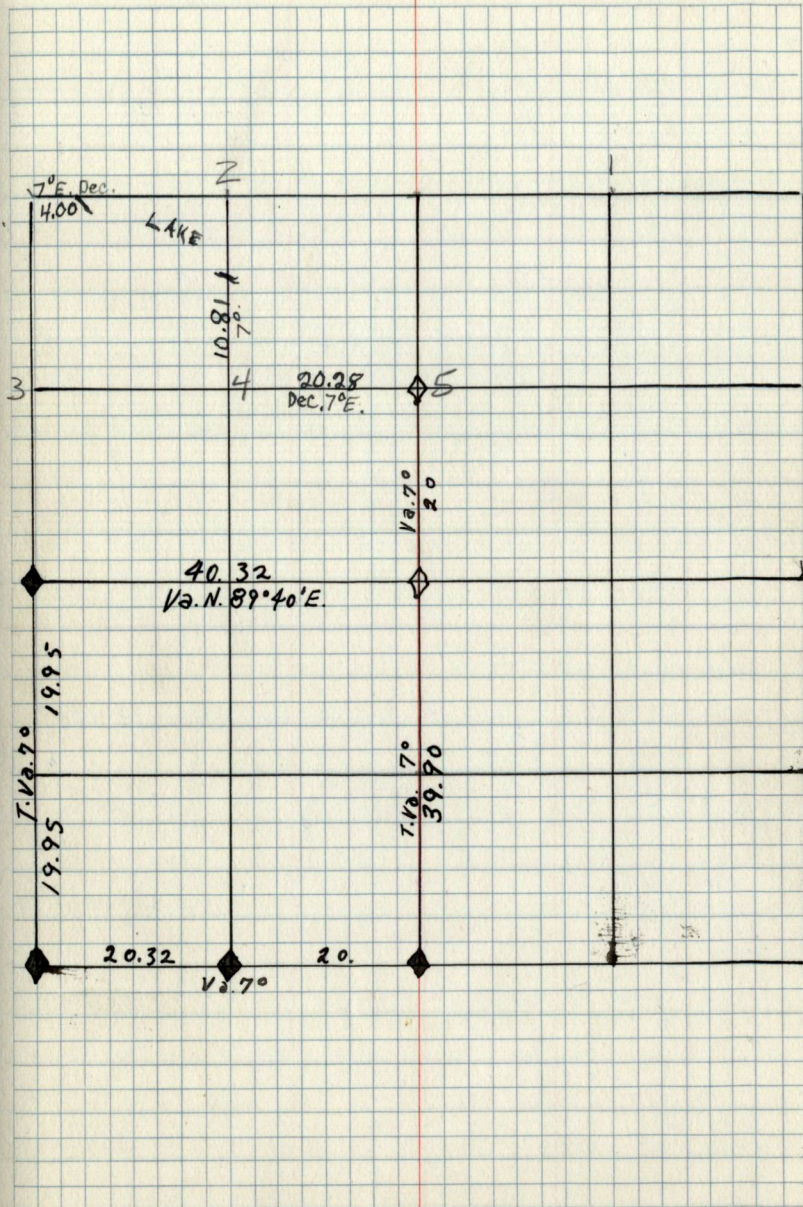


Kc911
LAKE
WINNIBIGOSHI
542
L. A. Ke, Act 8

Set $\frac{1}{16}$ Corner #5. Set F.S. post on W.T.,
(Oak 5" d.b.h.), Bearing N. $60^{\circ}30'E$. - 20 LINKS.

Set $\frac{1}{16}$ Corner #4. Set F.S. post on W.T.,
(Red Pine 16" d.b.h.), Bearing N. $80^{\circ}E$. 24 LINKS.

Set Section Corner For $\frac{1817}{1920}$. Set F.S. post
on W.T., (Jack Pine 7" d.b.h.), Bearing N $2^{\circ}E$. 9 links

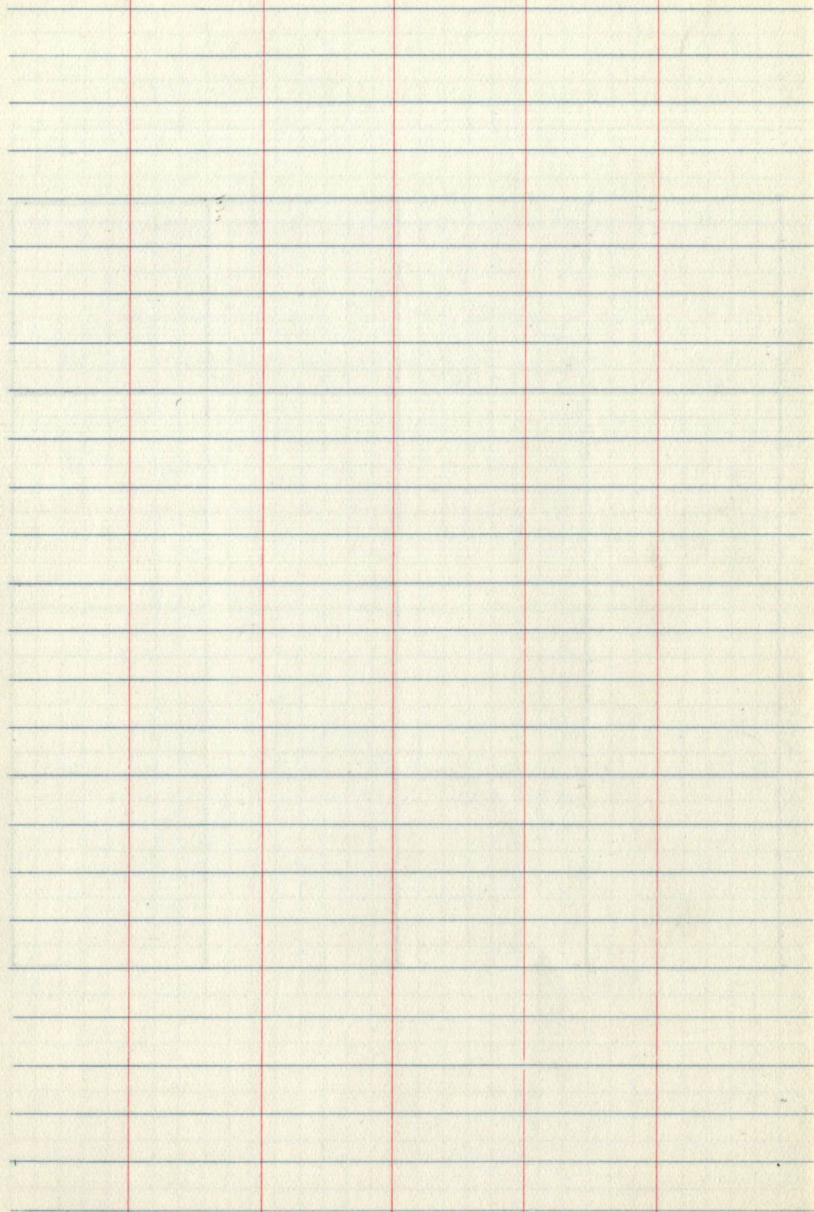


21

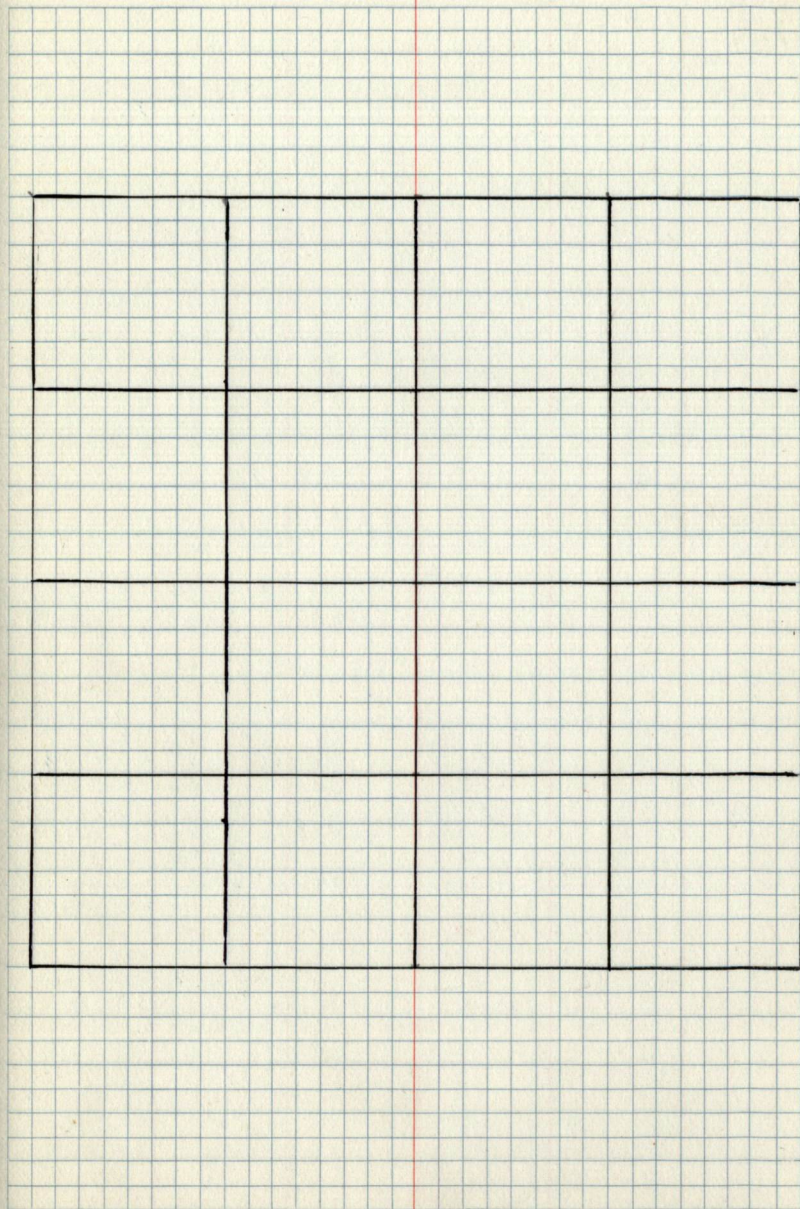
21

A grid of graph paper with a large table structure drawn over it. The table has 4 columns and 4 rows. The grid is 20 columns wide and 20 rows high. The table is drawn with thick black lines. The first row of the table is at the top of the grid, and the first column is on the left side of the grid. The table is empty.

21

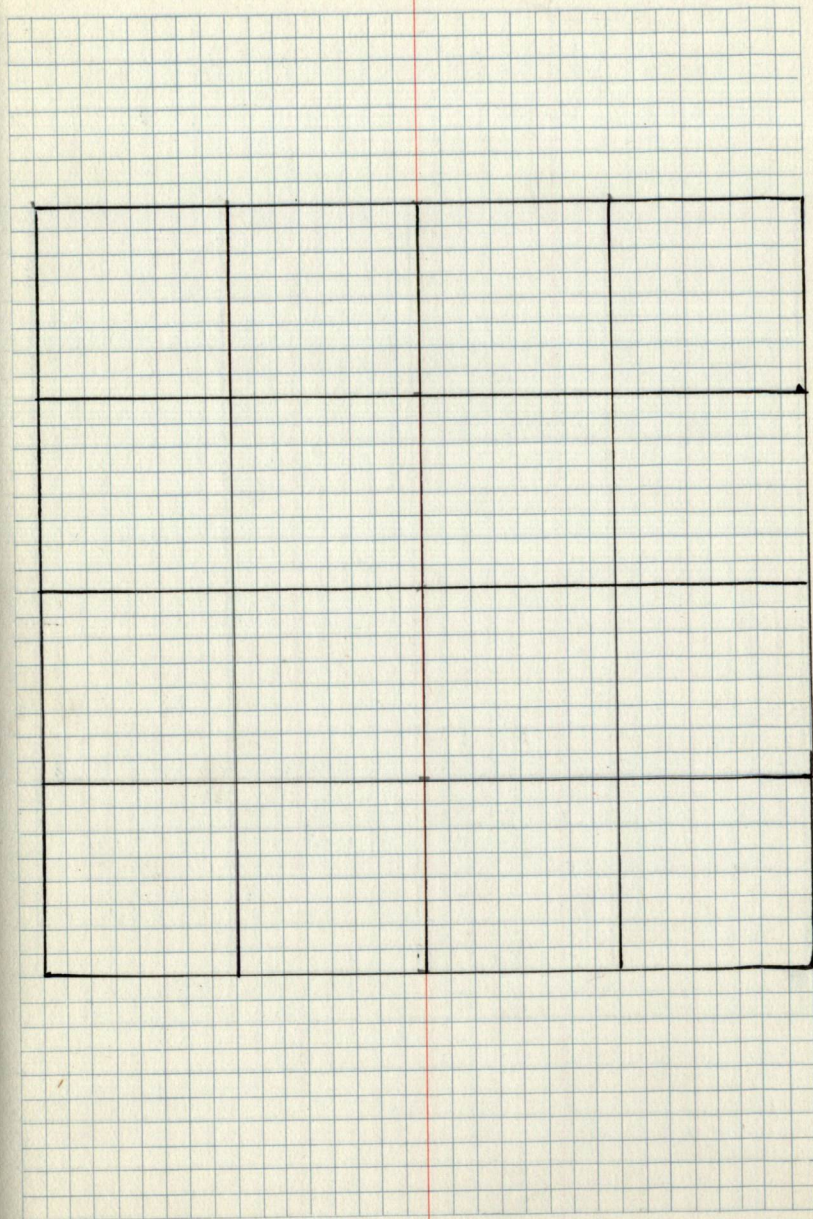


21



22

22



22

22

A grid of graph paper with a large rectangular table structure drawn over it. The table has 4 columns and 4 rows.

22

23

A grid of graph paper with a 4x4 table drawn on it. The table is composed of 4 columns and 4 rows of cells. The grid lines are blue, and the table lines are black.

23

23

A grid of graph paper with a large rectangular frame drawn over it. The frame is composed of thick black lines and is positioned in the center of the page. The grid consists of 20 columns and 20 rows. The frame is approximately 15 columns wide and 10 rows high. The frame is drawn with thick black lines, while the grid lines are thin and light blue.

24

24

A grid of graph paper with a 4x4 table drawn on it. The table is composed of 4 columns and 4 rows of cells. The grid lines are black and extend across the entire page.

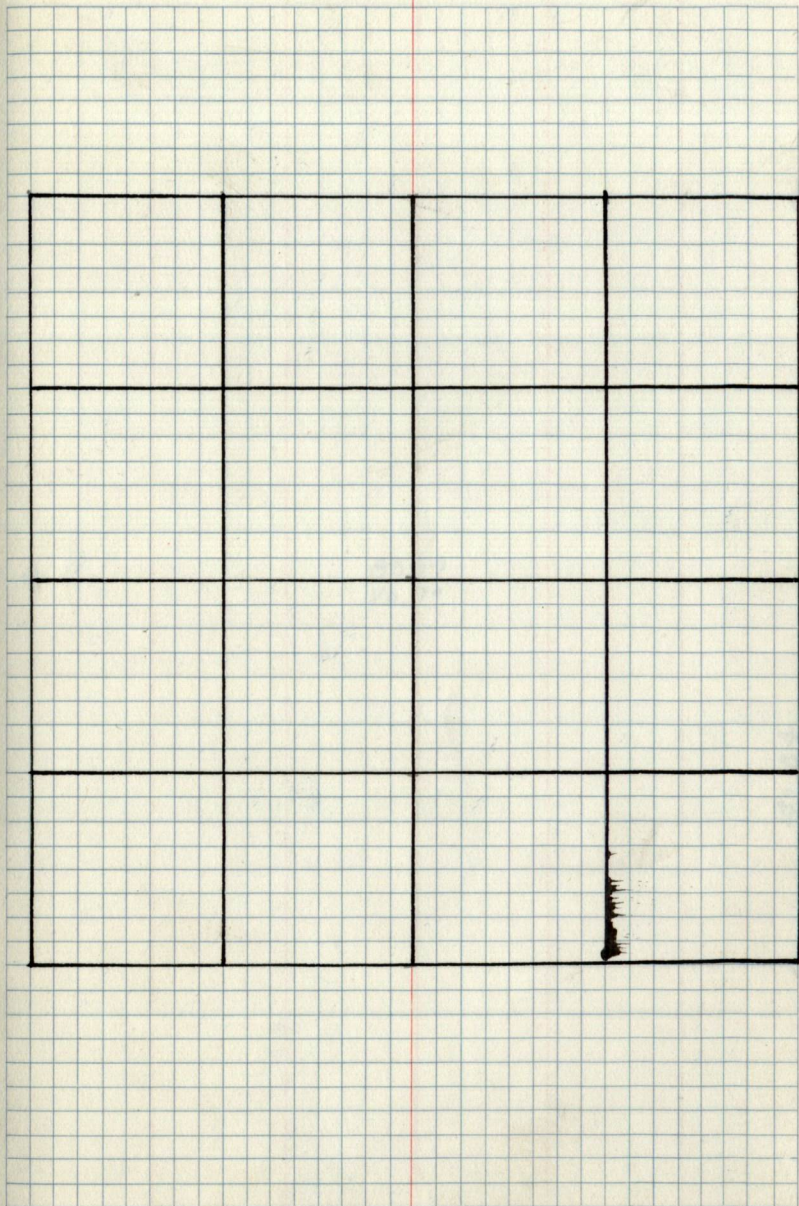
24

24

A grid of graph paper with a large rectangular table drawn over it. The table has 4 columns and 4 rows. The grid is approximately 20 units wide and 20 units high. The table is drawn with thick black lines and occupies the central portion of the page.

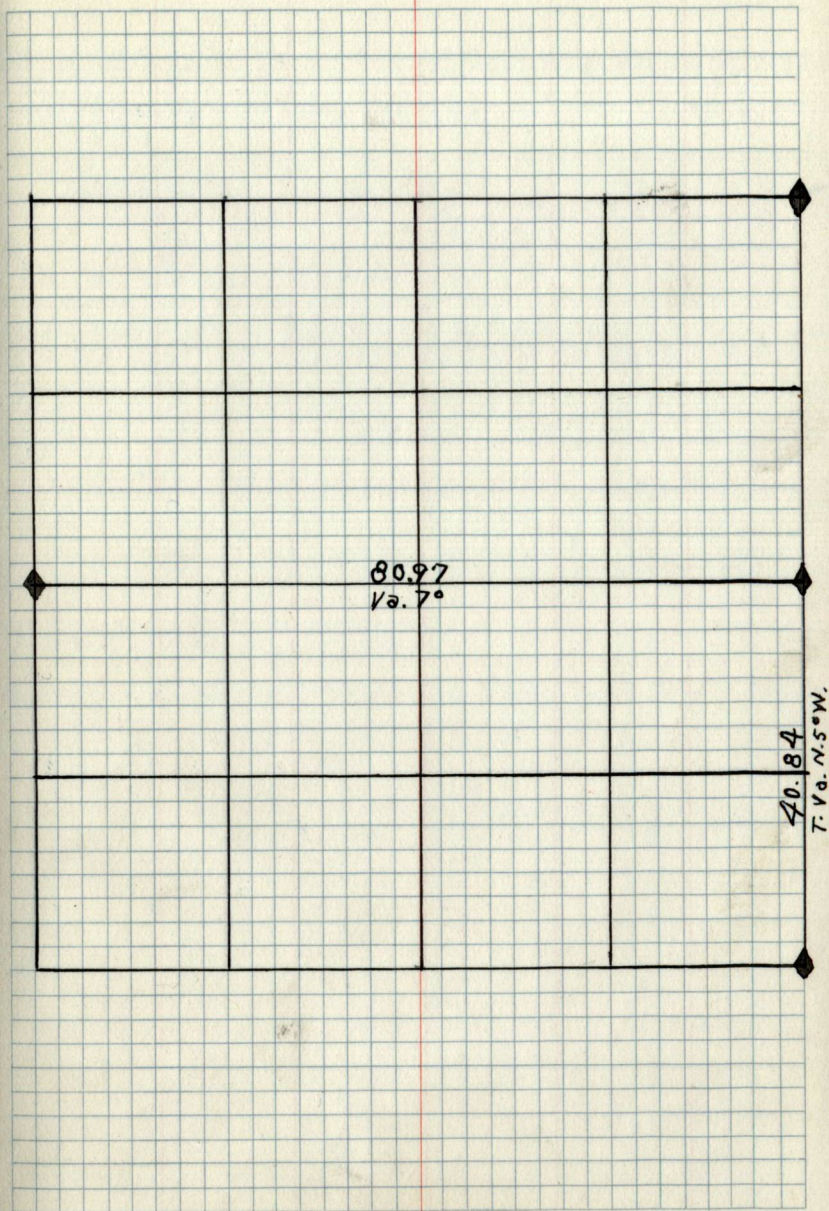
25

25



25

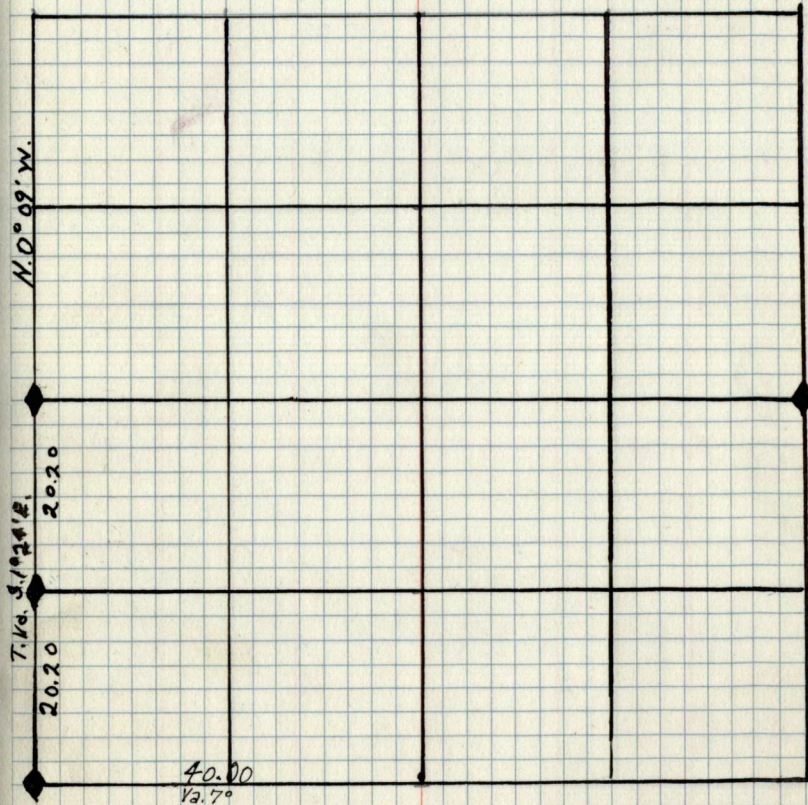
25



26

26

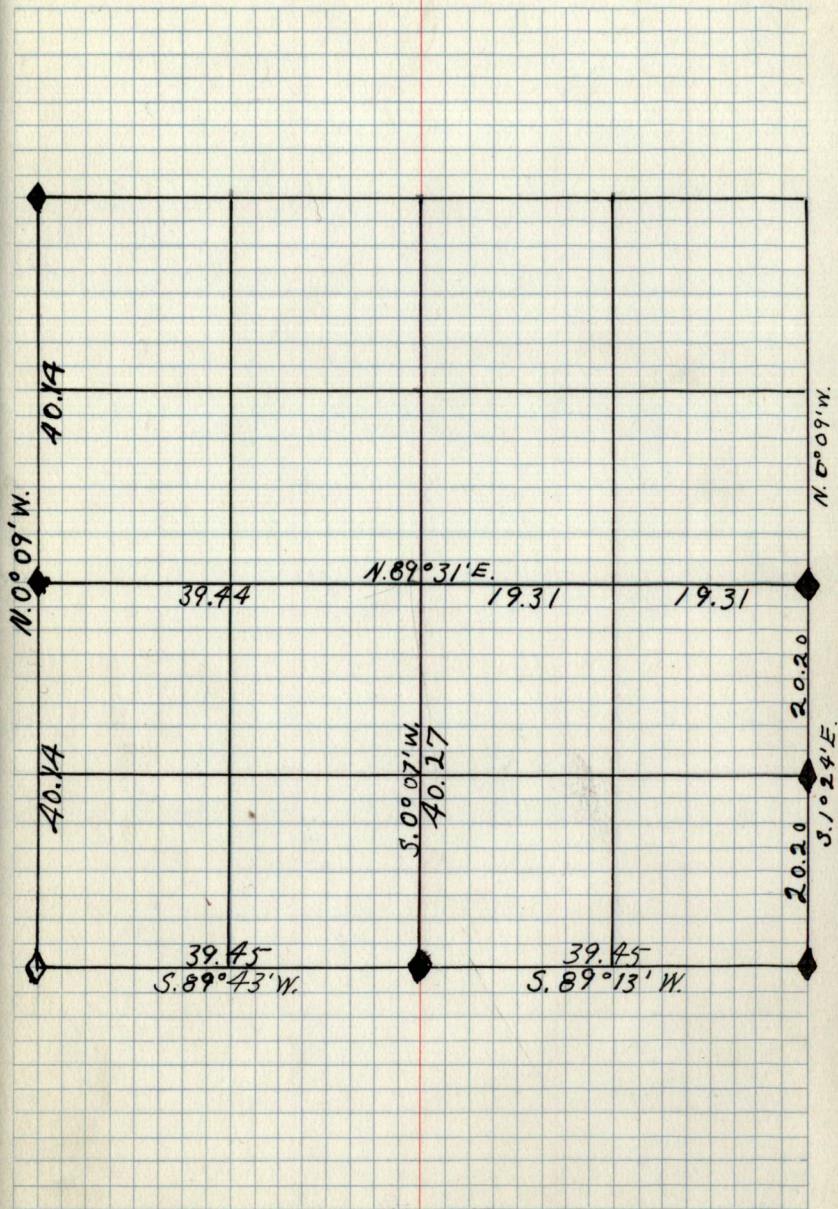
A grid on a graph paper page with a 4x4 table drawn over it. The table is composed of 4 columns and 4 rows of larger cells, each spanning 4 small grid units. The table is drawn with thick black lines. The grid itself is composed of small squares, approximately 20 units wide and 20 units high.



27

27

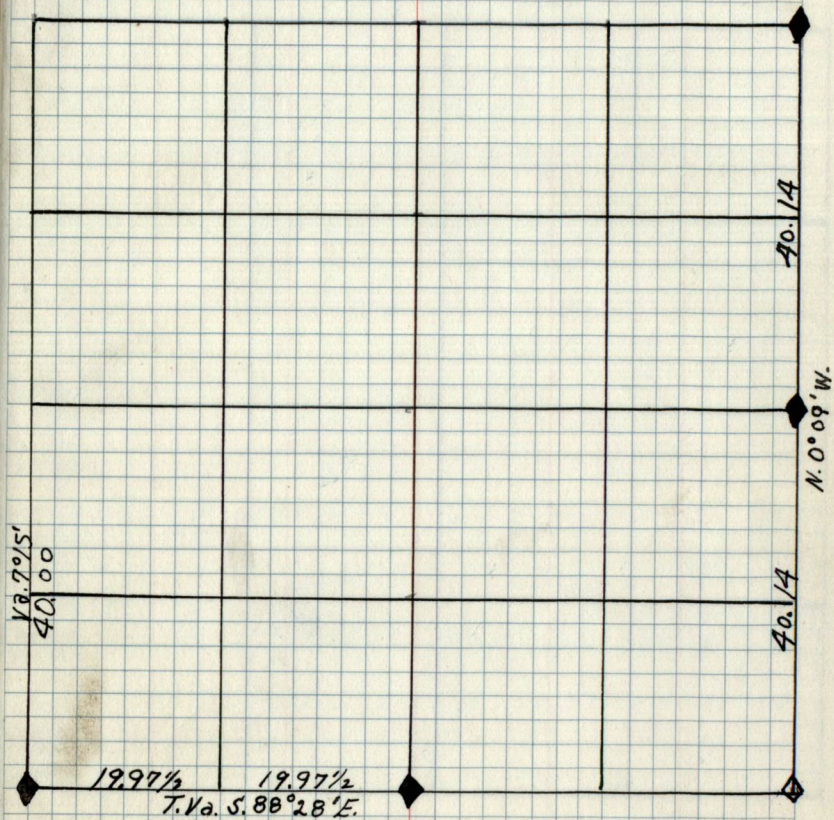
A grid of 20 columns and 10 rows is drawn on graph paper. In the center of the grid, a table with 4 columns and 4 rows is drawn with thick black lines. The table is positioned such that its top-left corner is at the intersection of the 5th and 5th grid lines, and its bottom-right corner is at the intersection of the 19th and 9th grid lines.



28

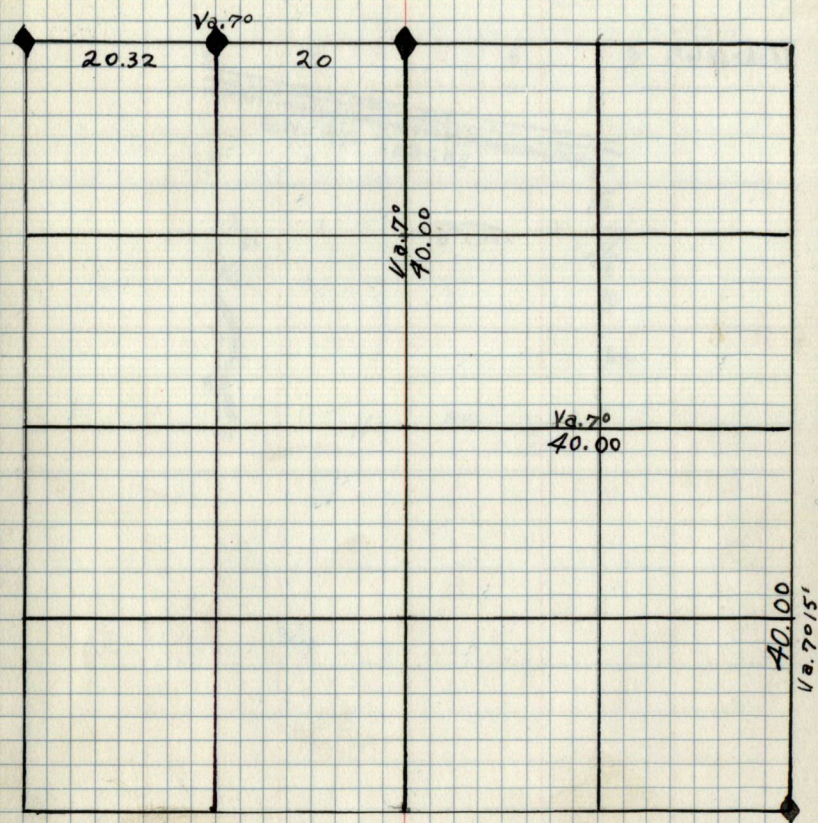
28

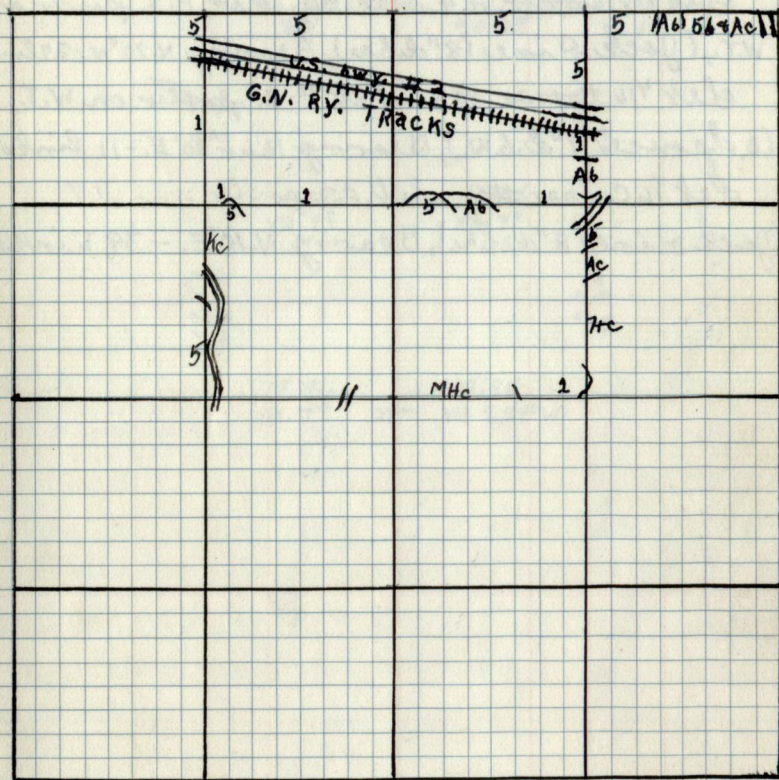
A grid on graph paper with a 4x4 table structure drawn over it. The table is composed of 4 columns and 4 rows of larger cells, each cell being 4 small grid units wide and 4 small grid units high. The table is drawn with thick black lines. The grid itself is composed of small squares, with a red vertical margin line on the right side.



29

29





Set section corner $\frac{19}{30} \frac{20}{29}$. Set F.S. poster on
W.T., (Jack Pine 5"), Bearing S. $19^{\circ}E$. - 51 Links.

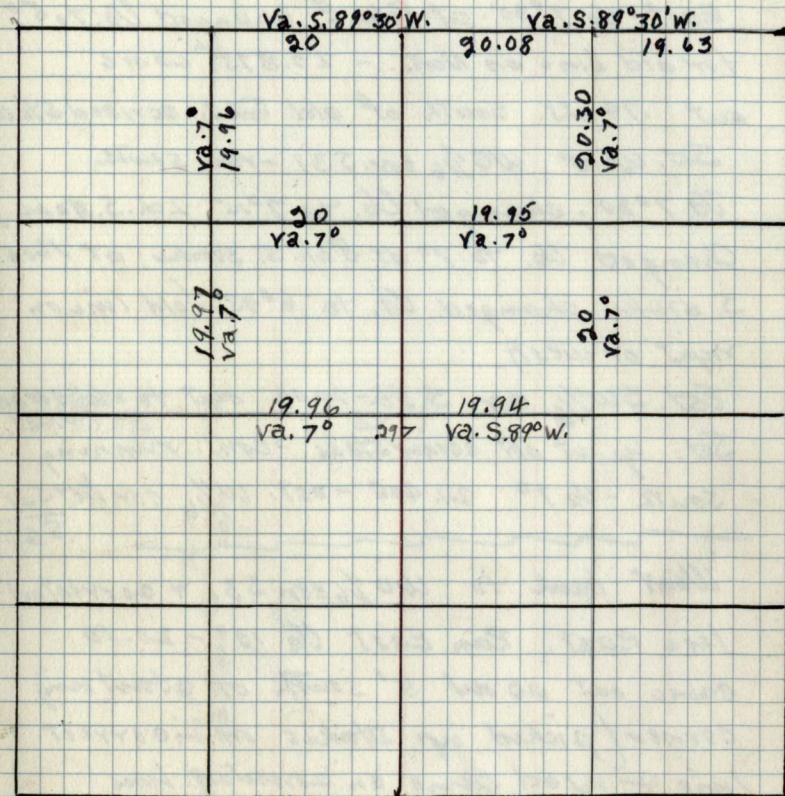
Set $\frac{1}{16}$ corner #1. Set F.S. poster on W.T.,
(Jack Pine 7" d.b.h.), Bearing N. $79^{\circ}30'W$. - 12 links

Set $\frac{1}{16}$ corner #4 sec. 30. Set F.S. poster on
W.T., (Jack Pine 18" d.b.h.), Bearing N. $70^{\circ}W$. - 29 links

Set $\frac{1}{16}$ corner #8. Set F.S. poster on W.T.,
(B. Spruce 8" d.b.h.), Bearing N. $61^{\circ}30'E$. - 11 links.

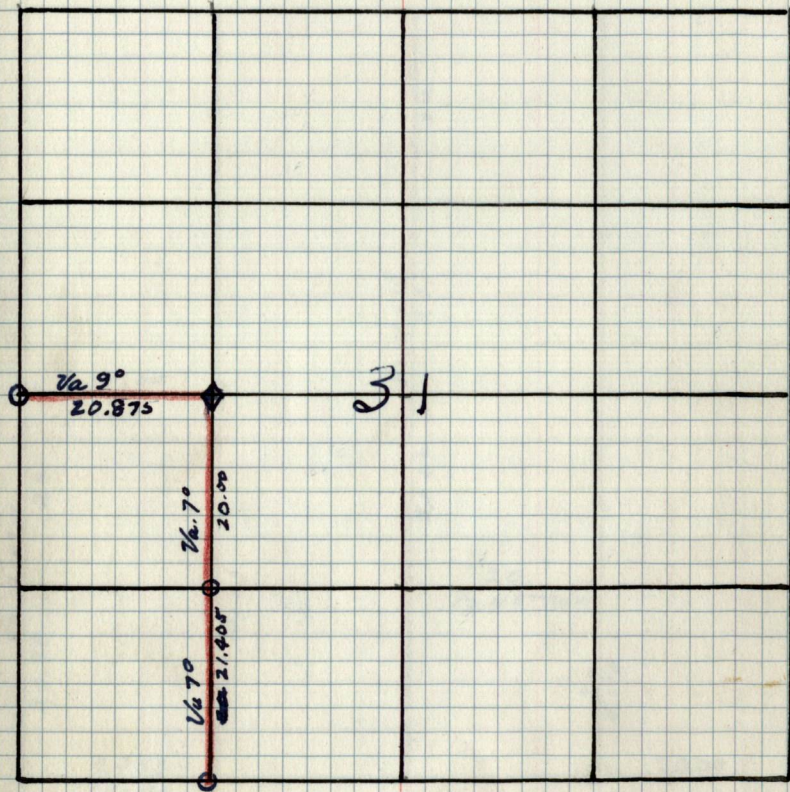
Set $\frac{1}{16}$ corner #9. Set F.S. poster on W.T.,
(Jack Pine 8" d.b.h.), Bearing N. $10^{\circ}E$. - 39 Links.

Weller 8/3/38
Weller 8/4/38
Weller 8/5/38
Weller 8/8/38
Weller 8/9/38
Weller 8/10/38

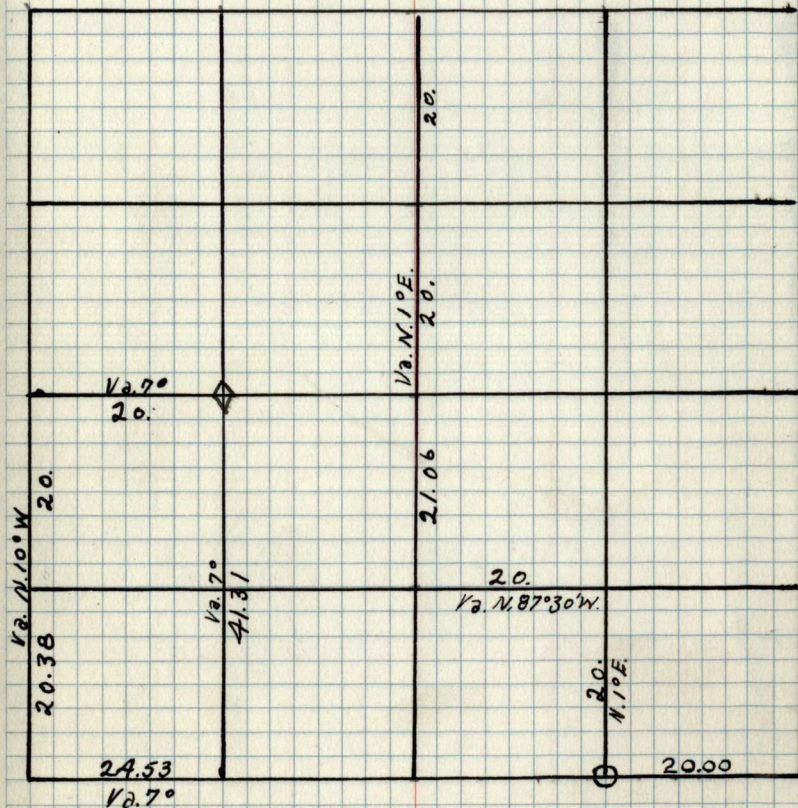


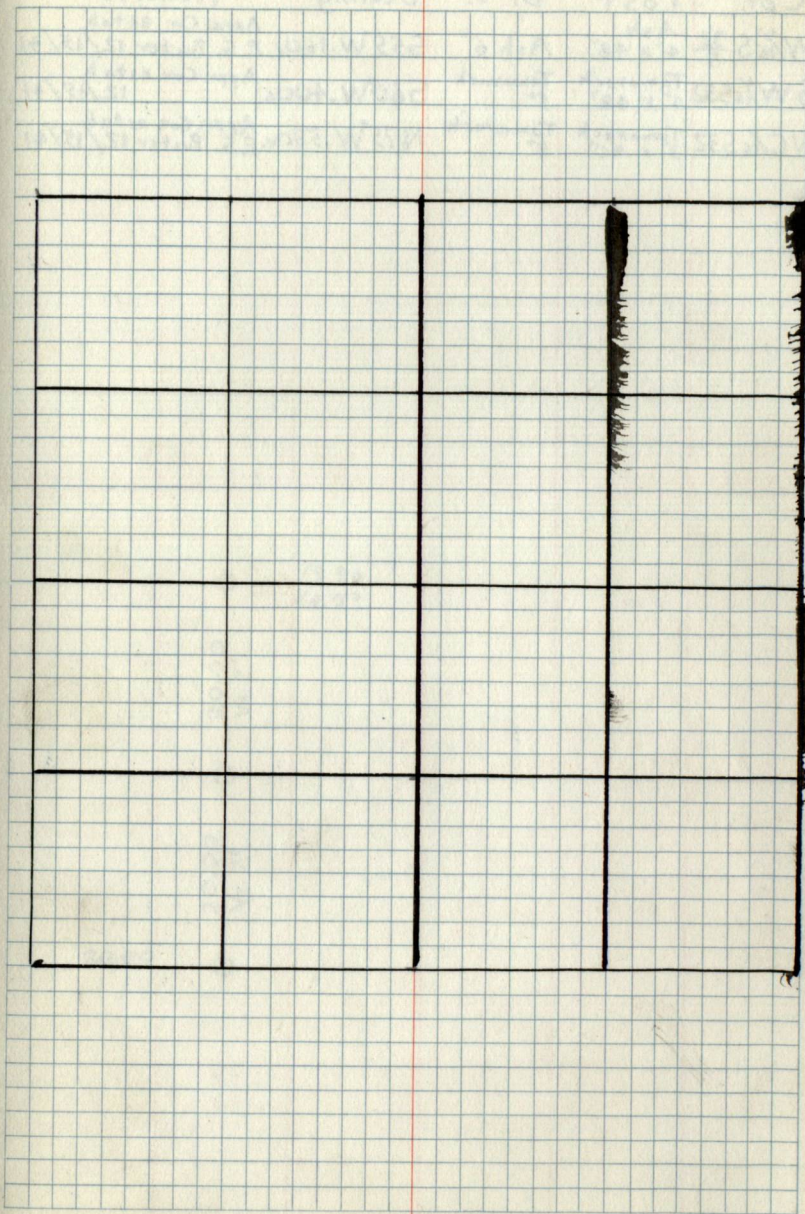
31

(Date Dec. 30, 1940)

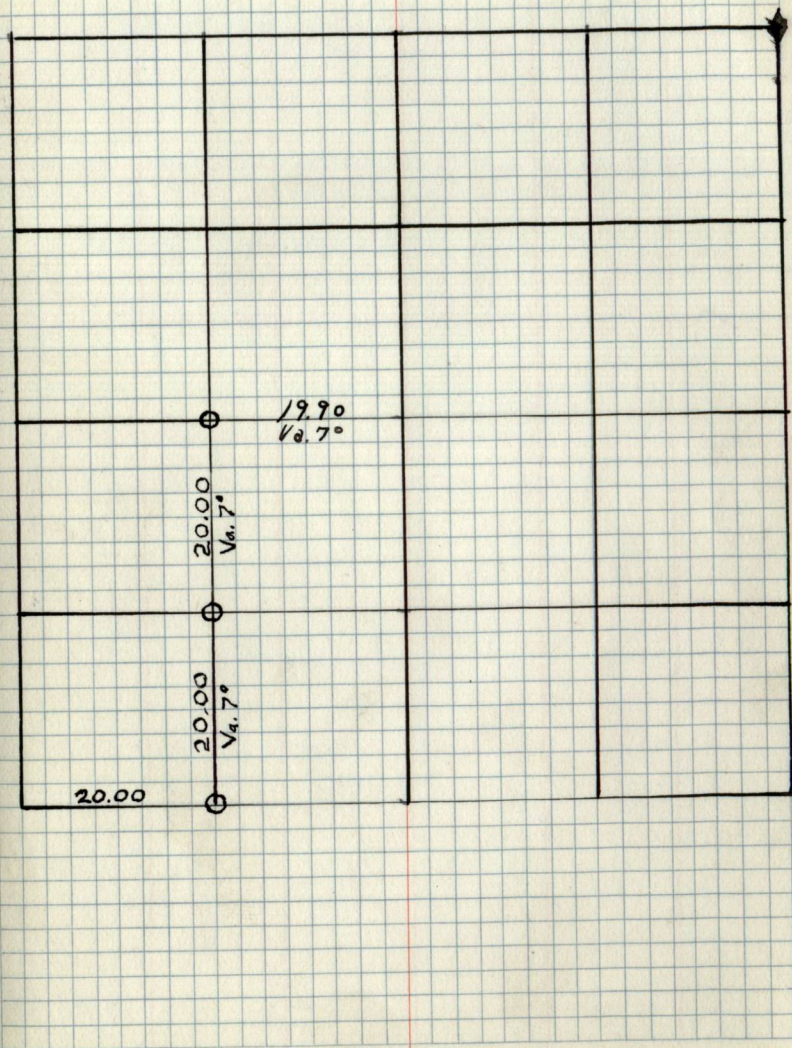
Party - Phelps, Hopkins, Wabloch,
McManis, Workman - Moeller.Set up at $\frac{1}{4}$ cor. bet. 536/531 - Ran
East - $\text{Va. } 7^{\circ}30'$ - at 8 chs. E. changed Va. to 5°
for old line on North. - 20.875^{ch} came
out .74 chs. south of old C.O. scribed stake.Set up at $\text{WC } \frac{1}{6}$ cor. 531 - ran south
 $\text{Va. } 7^{\circ}30'$; changed Va. to $7^{\circ}15'$ 2 ch. S. stake;
Changed Va. to 7° at 8 ch. S. stake; at 16 ch.
S. stake changed Va. to $6^{\circ}45'$ (old line on
right or west).Est. $\text{SW } \frac{1}{6}$ cor. 531 - 20.00 next to old corner
stake.Set up at old corner stake - cont. running
south - $\text{Va. } 7^{\circ}$ 21.405 - est. $\text{W } \frac{1}{6}$ cor. bet. 531
56.Went back to $\text{WC } \frac{1}{6}$ cor. 531 & corrected
line East. Ran East $\text{Va. } 10^{\circ}$ - 20.00
came out about 5' south of starting
corner (picked up stakes on incorrect
line & used same on corrected line).

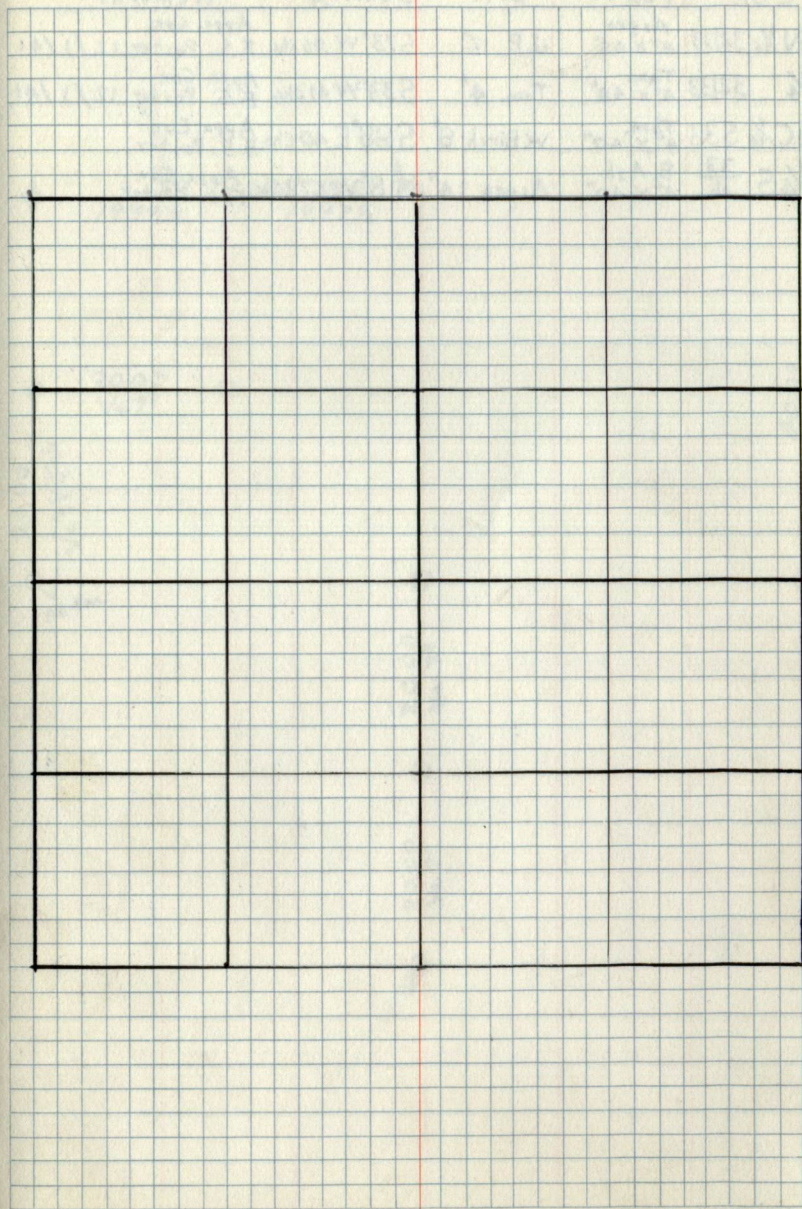
31 Cor.	Post	B.T.	Bearing	Remarks
E 1/6 S 31	Cedar 5" x 48"	Aspen 14"	S40°E 36	Appr. Cor. prev. estab. chs. F.S. Poster 12/12/41



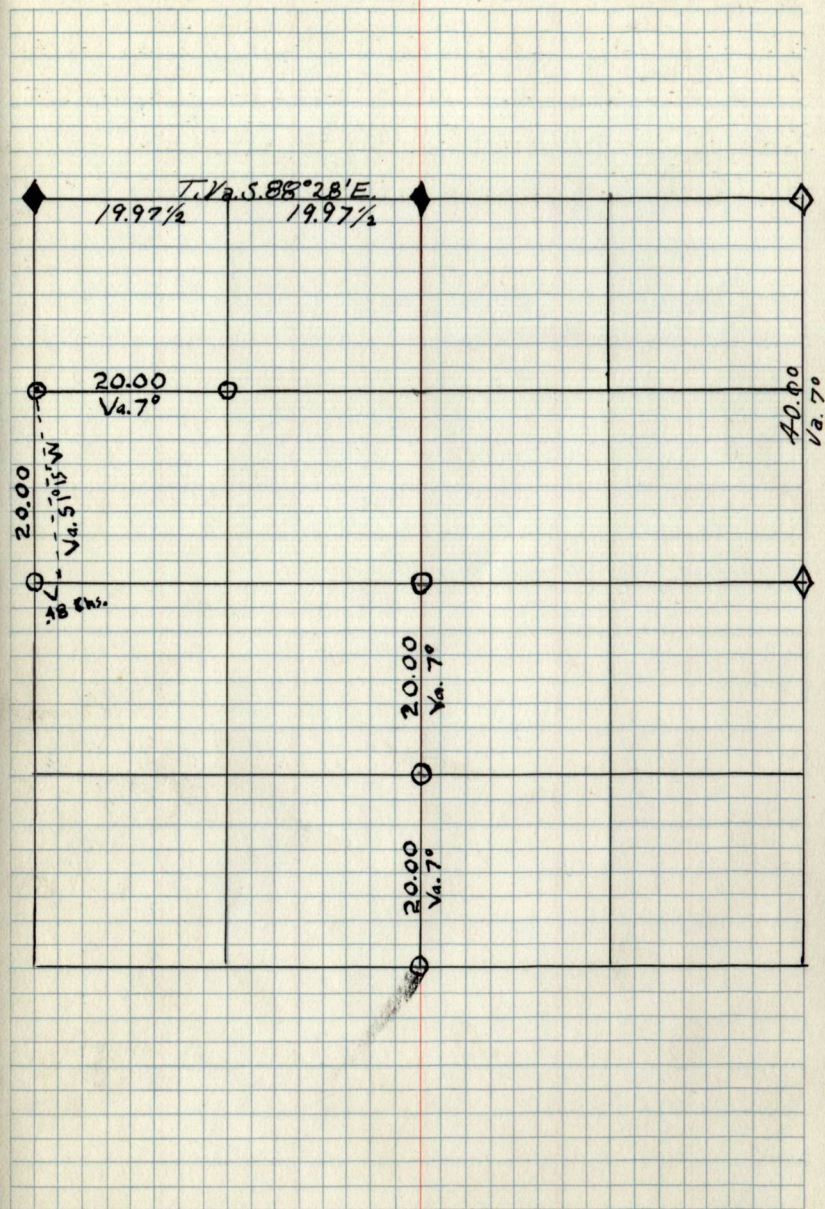


Cor.	Post	B. T.	Bearing	Remarks
W $\frac{1}{16}$ S $\frac{32}{5}$	Ash 4" x 48"	Ash 6"	S55°W. 16ch.	Appx. Cor. estab. F. S. Poster 12/15/41
SW $\frac{1}{16}$ S32	Tamarack 4" x 48"	Tamarack 5"	S60°W. 40ch.	Appx. Cor. estab. 12/15/41
WC $\frac{1}{16}$ S32	Tamarack 3" x 40"	Tamarack 8"	N75°W. 58ch.	Appx. Cor. estab. F. S. Poster 12/15/41





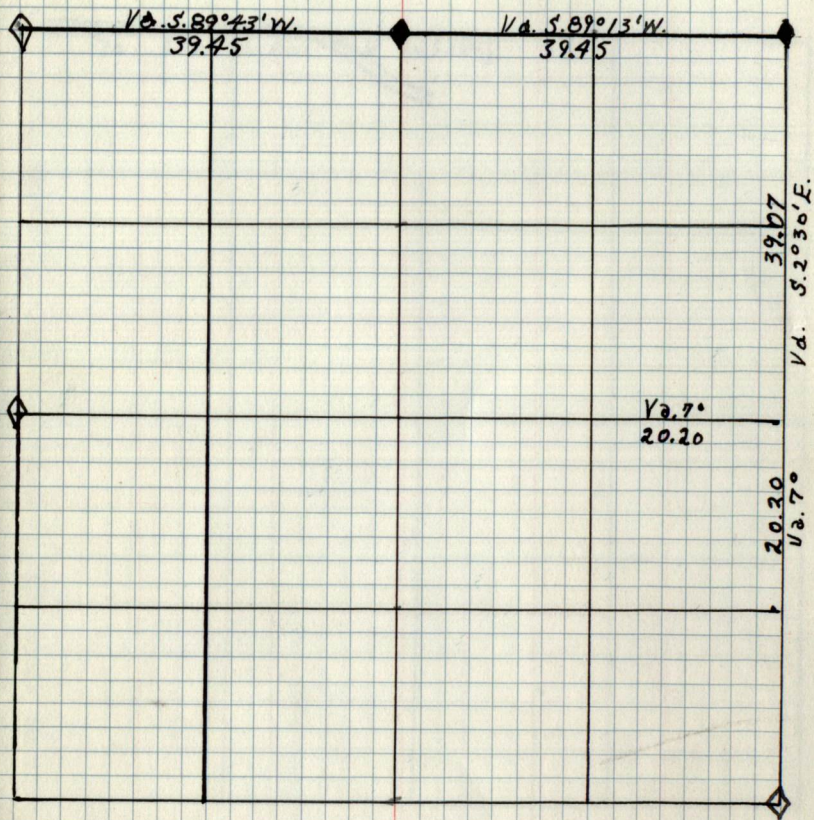
Cor.	Post	B.T.	Bearing	Remarks
N $\frac{1}{6}$ 32 33	Aspen 4" x 48"	J.P. 12"	S73°W .06 chs.	Appx. Cor. F.S. Poster 12/1/41
$\frac{1}{4}$ 32 33	Tam. 4" x 48"	Tam. 4"	S33°W .41 chs.	Appx. Cor. F.S. Poster 12/1/41
SC $\frac{1}{16}$ 533	Tam. 4" x 40"	W. Birch 8"	S88°E .40 chs.	Appx. Cor. F.S. Poster
$\frac{1}{4}$ S $\frac{33}{4}$	B. Ash 4" x 40"	Aspen 14"	N 8°W 1.72 chs.	Appx. Cor. F.S. Poster



34

34

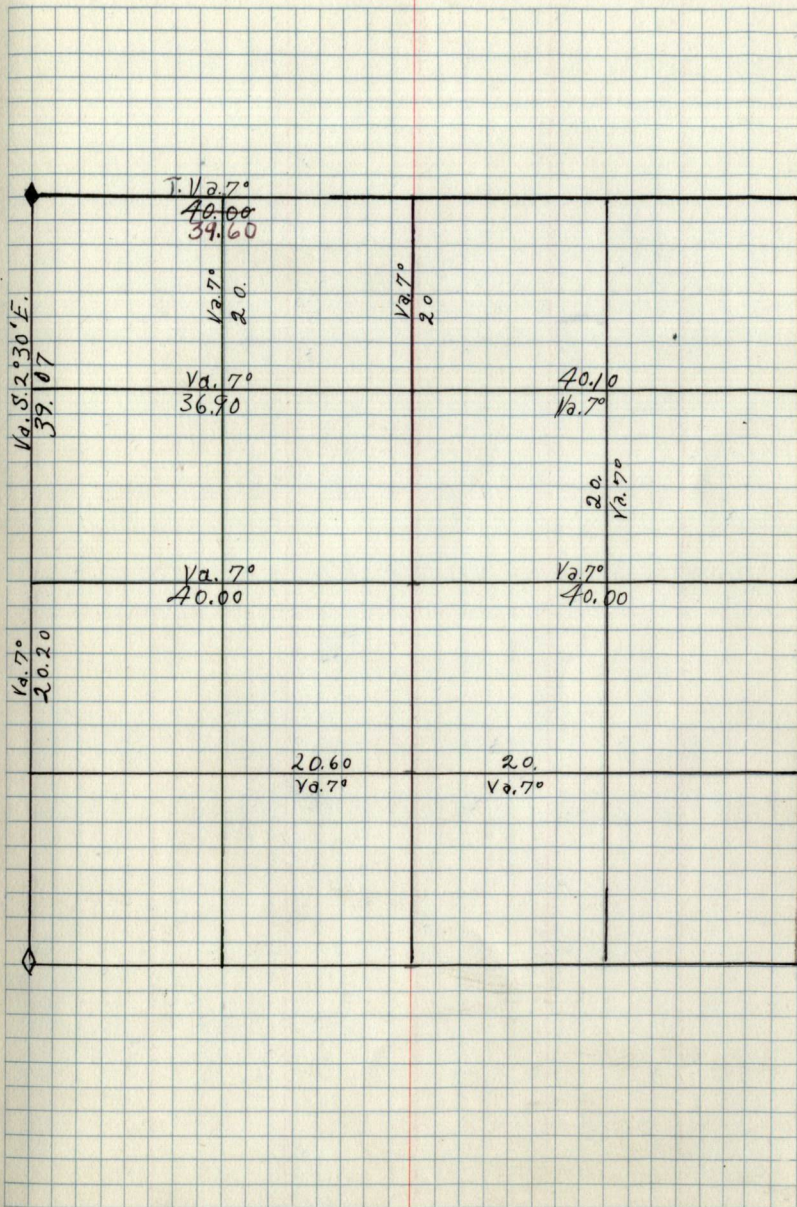
The right page of the notebook features a grid of graph paper. A large rectangular box is drawn in the center of the page, spanning approximately 10 grid units in width and 10 grid units in height. The box is defined by solid black lines. The grid itself is composed of small squares, with a vertical red margin line on the right side of the page.



35

Set $\frac{1}{4}$ corner for 26 + 35. Set F.S. poster on
 Red Lines, (W.T.), 10" d. b. w. Bearing N. 21° W.
 38 LINKS.

Set dec. corner for 26, 27, 34 + 35. Set
 2 F.S. posters on, (W.T.) (1) Tamarack 6" dia. Bear-
 ing S. 31° E. = 28 Links. (2) Aspen 7" d. b. w. Bear-
 ing N. 47° W. = 45 LINKS.

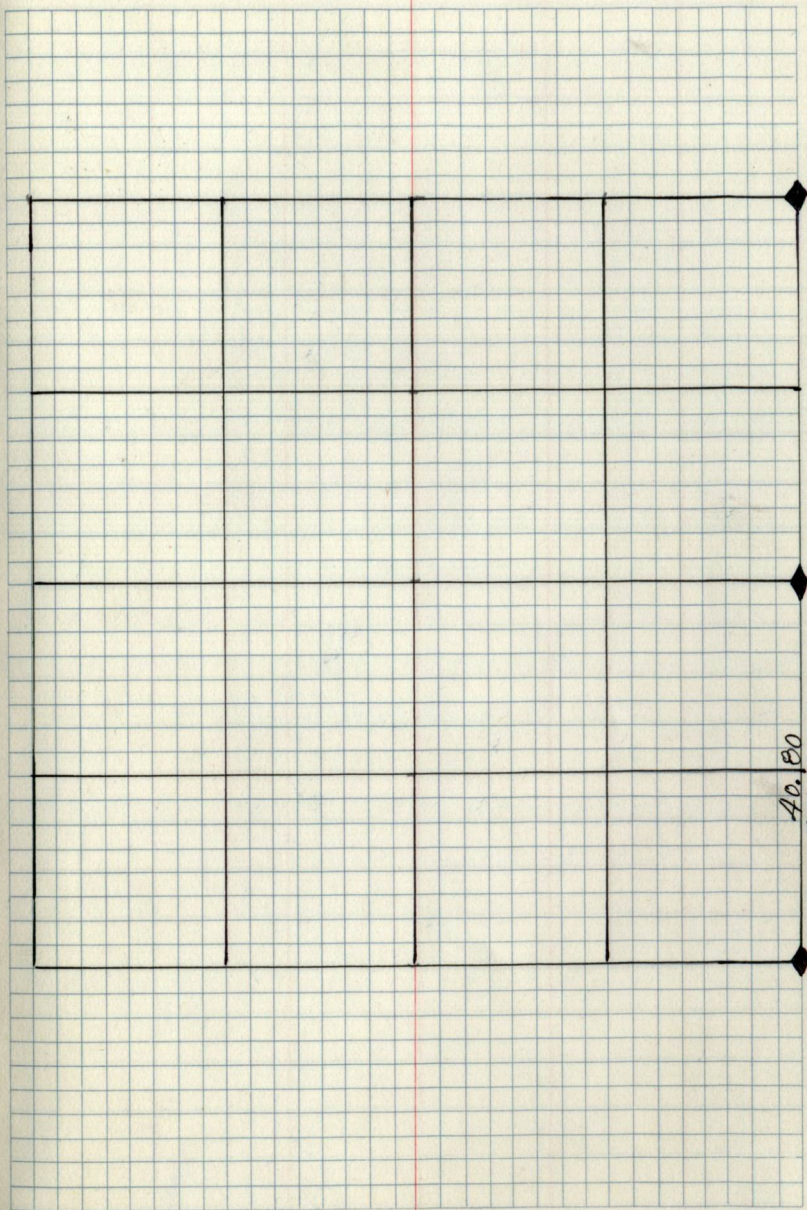
 by - L. Weller 6/17/38
 35


36

36

36

36



Pages 37- End
are Blank

