

T 145 N R 27 W

MINING  
TRANSIT BOOK

USFS

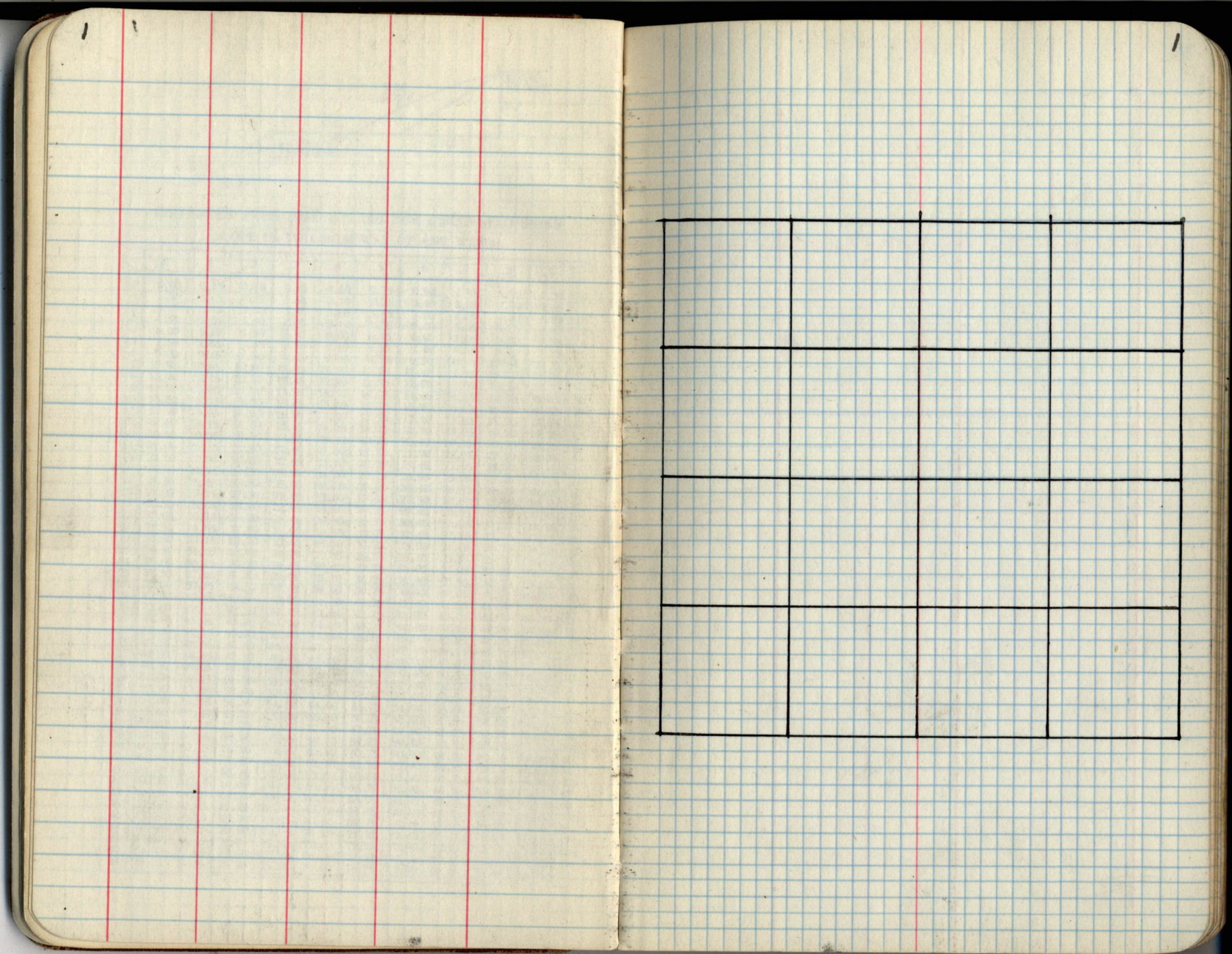
CC 17

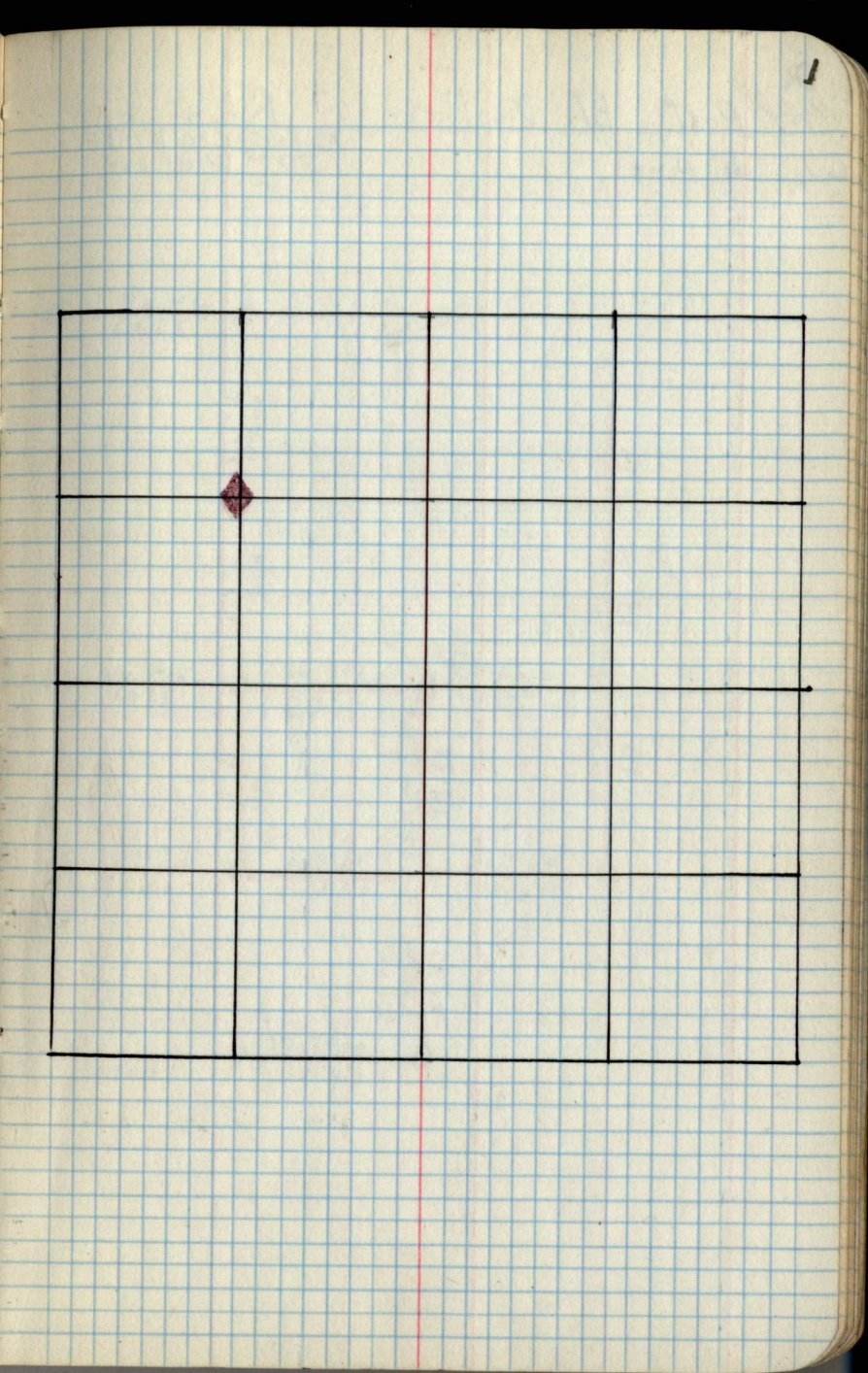
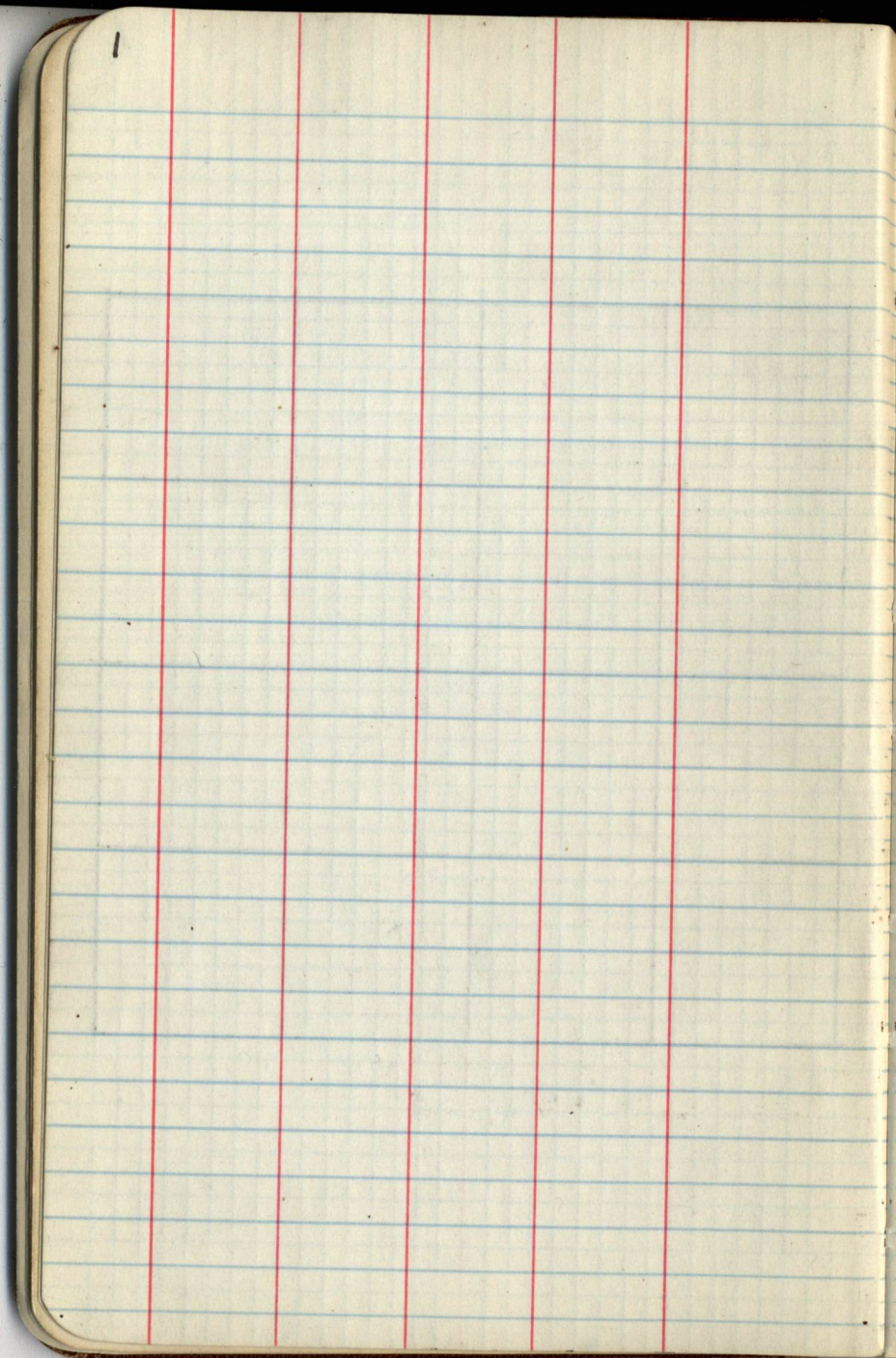
TABLES FOR EXCAVATIONS AND EMBANKMENTS.

DISTANCES FROM CENTER OF ROADWAY FOR CROSS-SECTIONING  
ROADWAY 18 FEET WIDE. SIDE SLOPES 1 TO 1.  
FOR SINGLE TRACK EXCAVATION.

	0	.1	.2	.3	.4	.5	.6	.7	.8	.9	
0	9.0	9.1	9.2	9.3	9.4	9.5	9.6	9.7	9.8	9.9	0
1	10.0	10.1	10.2	10.3	10.4	10.5	10.6	10.7	10.8	10.9	1
2	11.0	11.1	11.2	11.3	11.4	11.5	11.6	11.7	11.8	11.9	2
3	12.0	12.1	12.2	12.3	12.4	12.5	12.6	12.7	12.8	12.9	3
4	13.0	13.1	13.2	13.3	13.4	13.5	13.6	13.7	13.8	13.9	4
5	14.0	14.1	14.2	14.3	14.4	14.5	14.6	14.7	14.8	14.9	5
6	15.0	15.1	15.2	15.3	15.4	15.5	15.6	15.7	15.8	15.9	6
7	16.0	16.1	16.2	16.3	16.4	16.5	16.6	16.7	16.8	16.9	7
8	17.0	17.1	17.2	17.3	17.4	17.5	17.6	17.7	17.8	17.9	8
9	18.0	18.1	18.2	18.3	18.4	18.5	18.6	18.7	18.8	18.9	9
10	19.0	19.1	19.2	19.3	19.4	19.5	19.6	19.7	19.8	19.9	10
11	20.0	20.1	20.2	20.3	20.4	20.5	20.6	20.7	20.8	20.9	11
12	21.0	21.1	21.2	21.3	21.4	21.5	21.6	21.7	21.8	21.9	12
13	22.0	22.1	22.2	22.3	22.4	22.5	22.6	22.7	22.8	22.9	13
14	23.0	23.1	23.2	23.3	23.4	23.5	23.6	23.7	23.8	23.9	14
15	24.0	24.1	24.2	24.3	24.4	24.5	24.6	24.7	24.8	24.9	15
16	25.0	25.1	25.2	25.3	25.4	25.5	25.6	25.7	25.8	25.9	16
17	26.0	26.1	26.2	26.3	26.4	26.5	26.6	26.7	26.8	26.9	17
18	27.0	27.1	27.2	27.3	27.4	27.5	27.6	27.7	27.8	27.9	18
19	28.0	28.1	28.2	28.3	28.4	28.5	28.6	28.7	28.8	28.9	19
20	29.0	29.1	29.2	29.3	29.4	29.5	29.6	29.7	29.8	29.9	20
21	30.0	30.1	30.2	30.3	30.4	30.5	30.6	30.7	30.8	30.9	21
22	31.0	31.1	31.2	31.3	31.4	31.5	31.6	31.7	31.8	31.9	22
23	32.0	32.1	32.2	32.3	32.4	32.5	32.6	32.7	32.8	32.9	23
24	33.0	33.1	33.2	33.3	33.4	33.5	33.6	33.7	33.8	33.9	24
25	34.0	34.1	34.2	34.3	34.4	34.5	34.6	34.7	34.8	34.9	25
26	35.0	35.1	35.2	35.3	35.4	35.5	35.6	35.7	35.8	35.9	26
27	36.0	36.1	36.2	36.3	36.4	36.5	36.6	36.7	36.8	36.9	27
28	37.0	37.1	37.2	37.3	37.4	37.5	37.6	37.7	37.8	37.9	28
29	38.0	38.1	38.2	38.3	38.4	38.5	38.6	38.7	38.8	38.9	29
30	39.0	39.1	39.2	39.3	39.4	39.5	39.6	39.7	39.8	39.9	30
31	40.0	40.1	40.2	40.3	40.4	40.5	40.6	40.7	40.8	40.9	31
32	41.0	41.1	41.2	41.3	41.4	41.5	41.6	41.7	41.8	41.9	32
33	42.0	42.1	42.2	42.3	42.4	42.5	42.6	42.7	42.8	42.9	33
34	43.0	43.1	43.2	43.3	43.4	43.5	43.6	43.7	43.8	43.9	34
35	44.0	44.1	44.2	44.3	44.4	44.5	44.6	44.7	44.8	44.9	35
36	45.0	45.1	45.2	45.3	45.4	45.5	45.6	45.7	45.8	45.9	36

145-27  
Scanned  
July 17, 2012  
Khanney



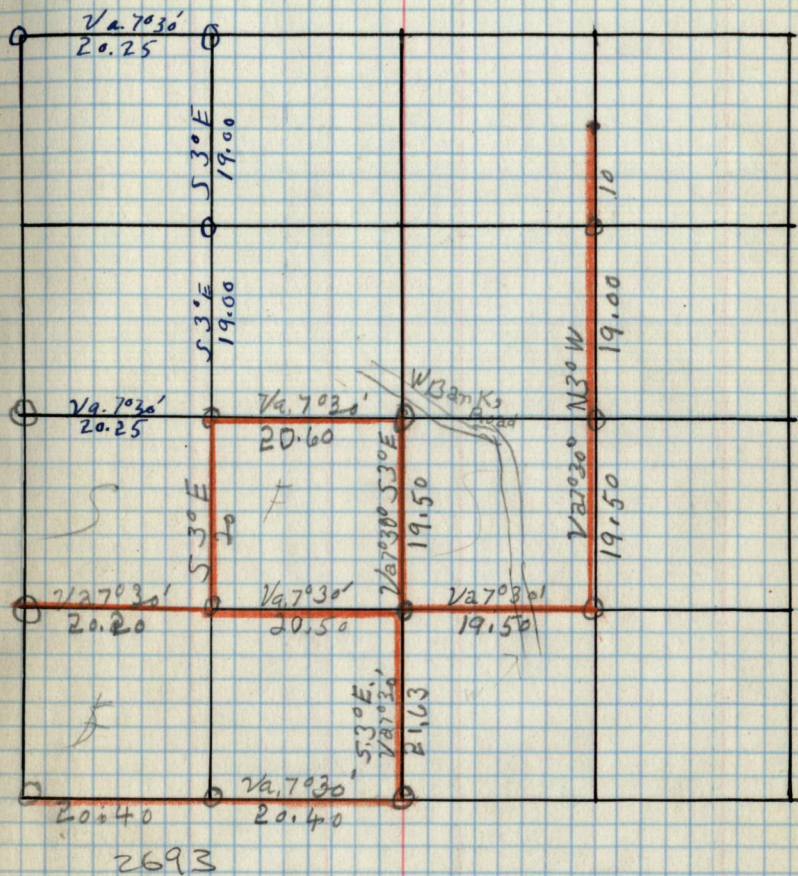


2

COT. Post. BT. Dia. Bezy  
C<sup>1</sup>/<sub>4</sub> 4" Pine

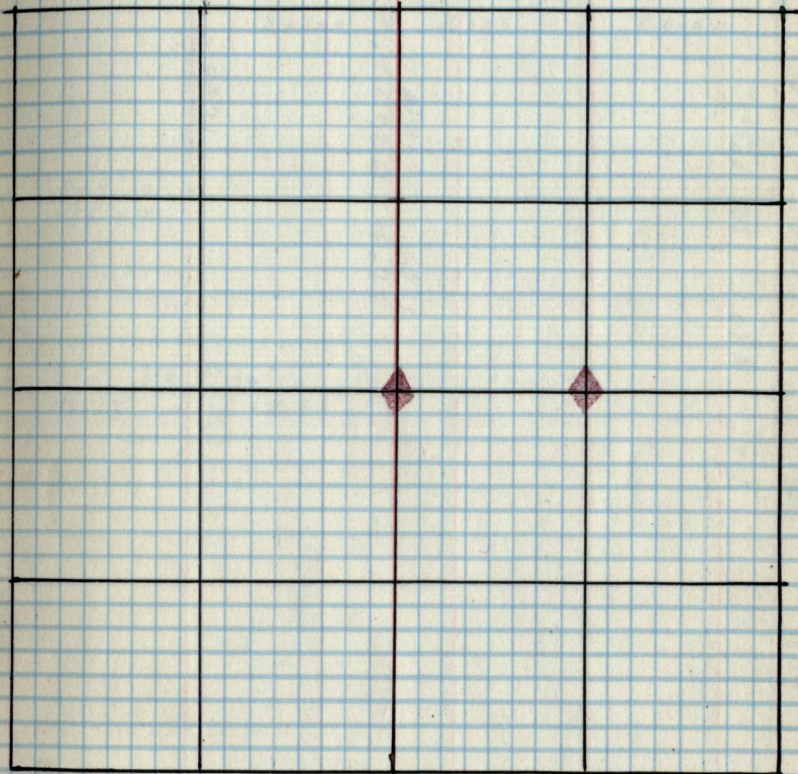
Remarks  
FS. Post on 6" J.P.  
S87° W R3/1 R.

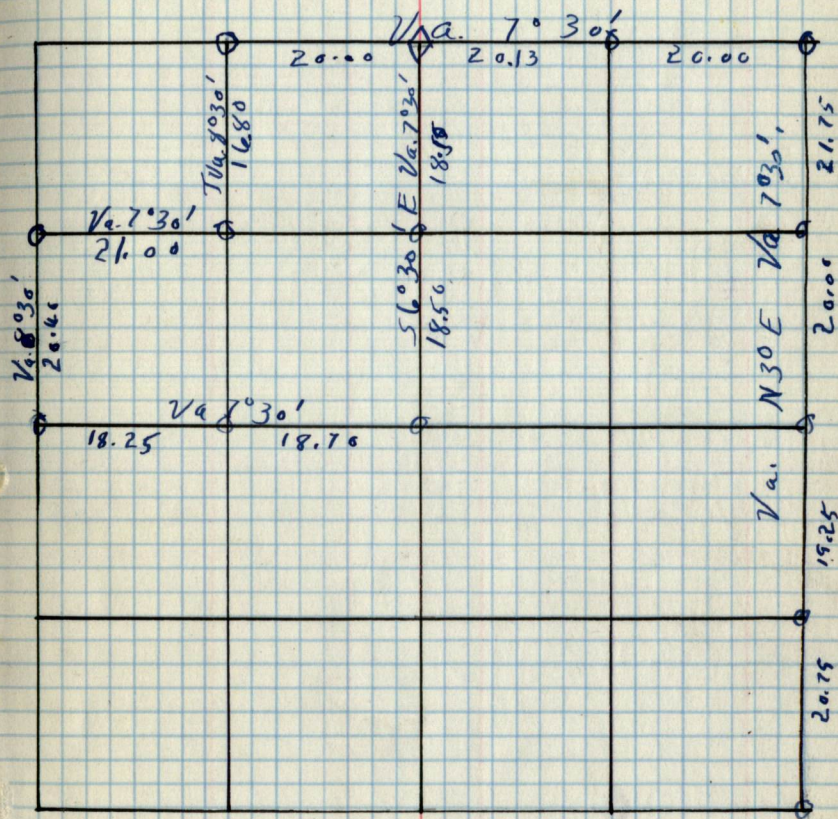
2

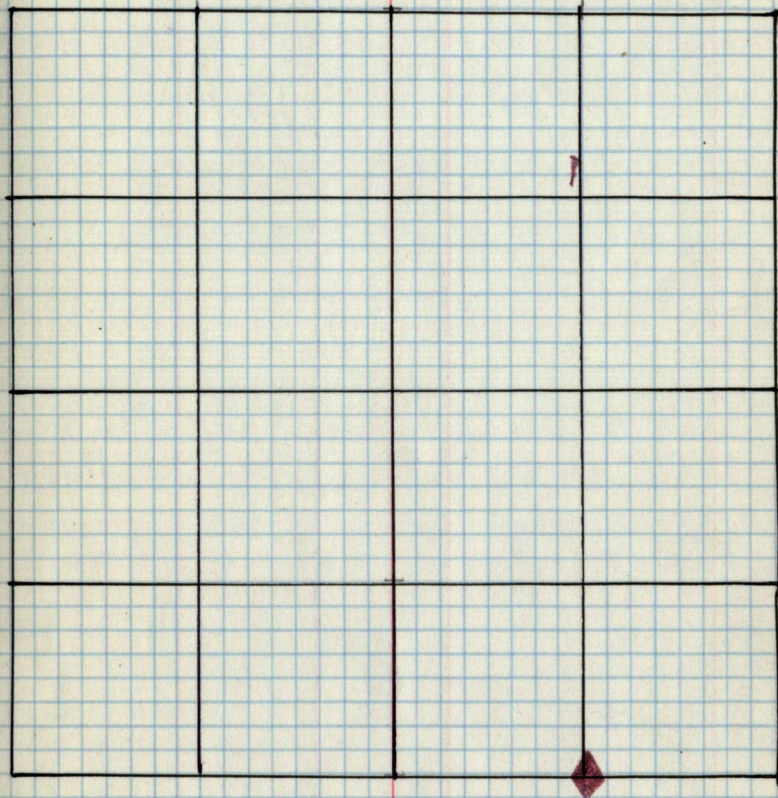


2

2



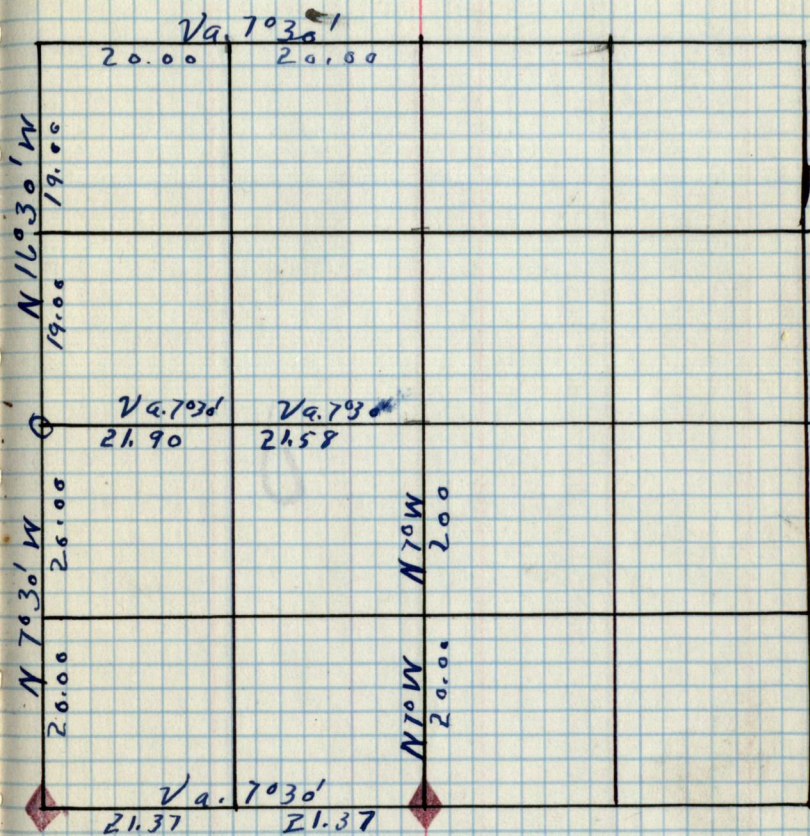






4

4

5

U

5

Pages 5-7  
are Blank


8

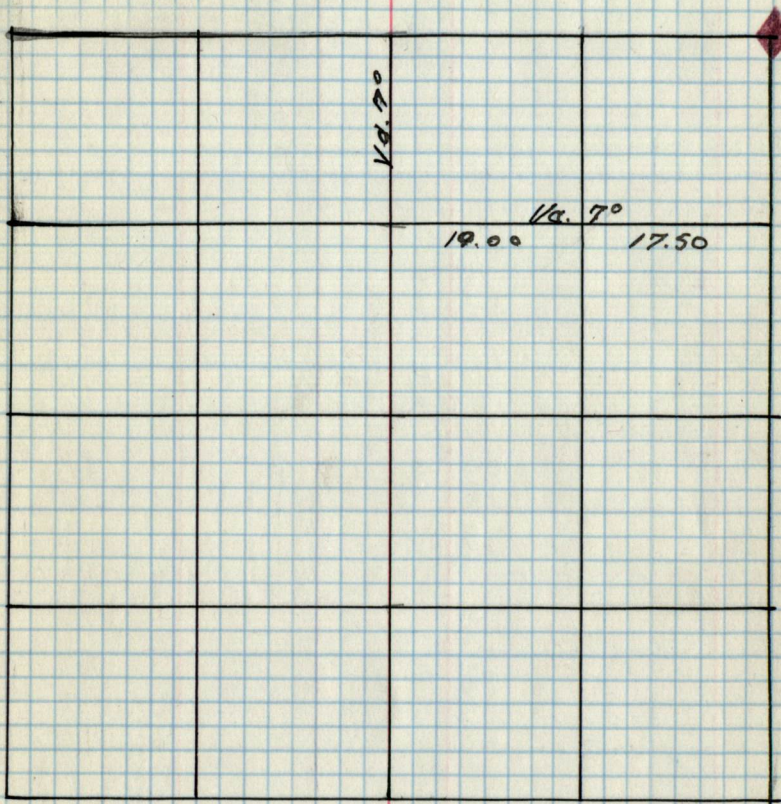
COY POST B.T. Dia Bear *Remarks.*  
 5/4 4" pine NP. 20' N26°W. 181k As post set on original B.T. 4/7/41 *CSB*

8/4

8

4





9

9

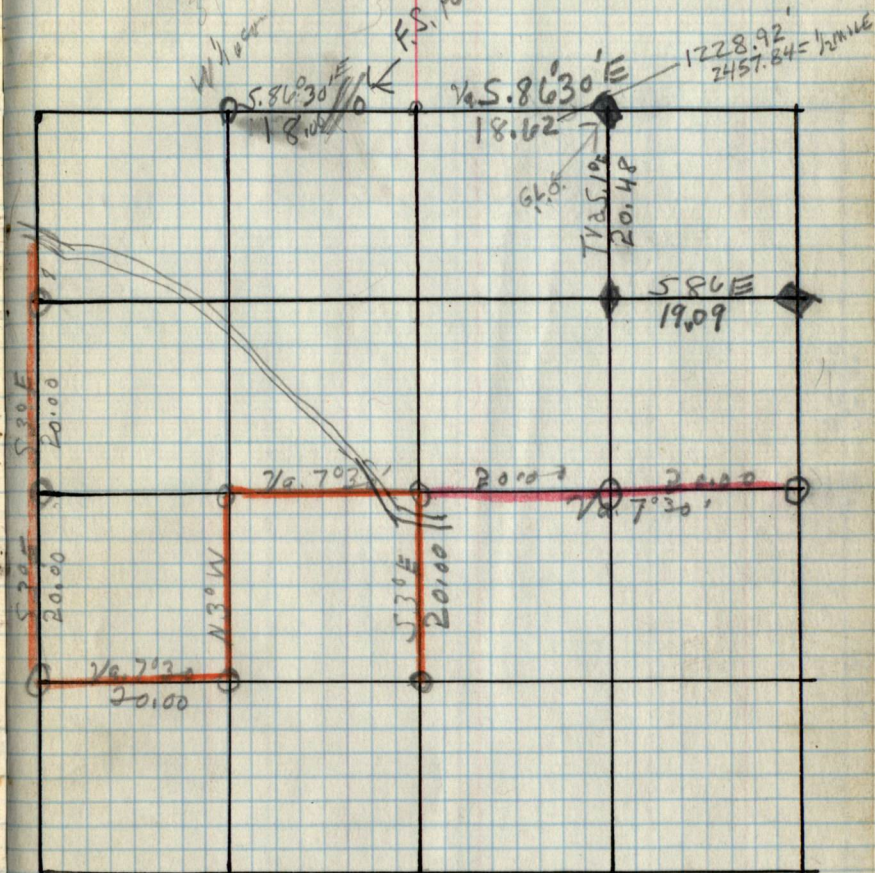

9

9

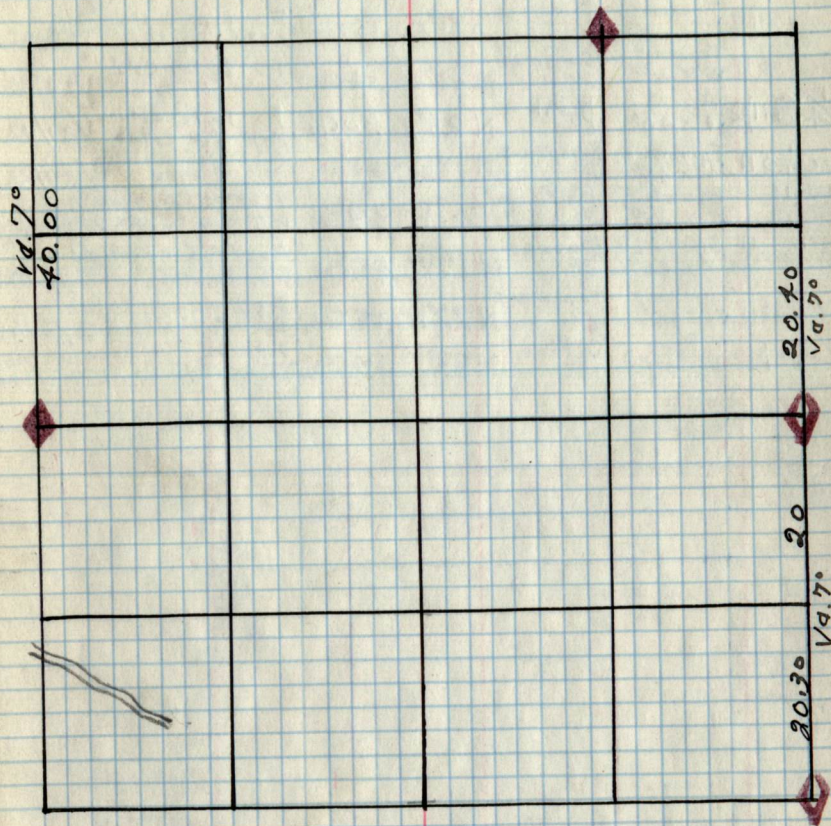

40.00  
14.70

10  
 Coy. Post B.T. Dia Bear Remarks  
 original B.T.  
 1/4 9/10 4" J.P. NR 18 S65E°12 B.T. is dead tree.  
 E 1/6 3/10 4" Tam Tam 8" N62E°22 F.S. post on BT  
 N.E. 1/6 4" Tam Blam 6" S80E.9  
 N 1/4 10/11 2" Tam Tam 4" S.78E 12 F.S. post on B.T.

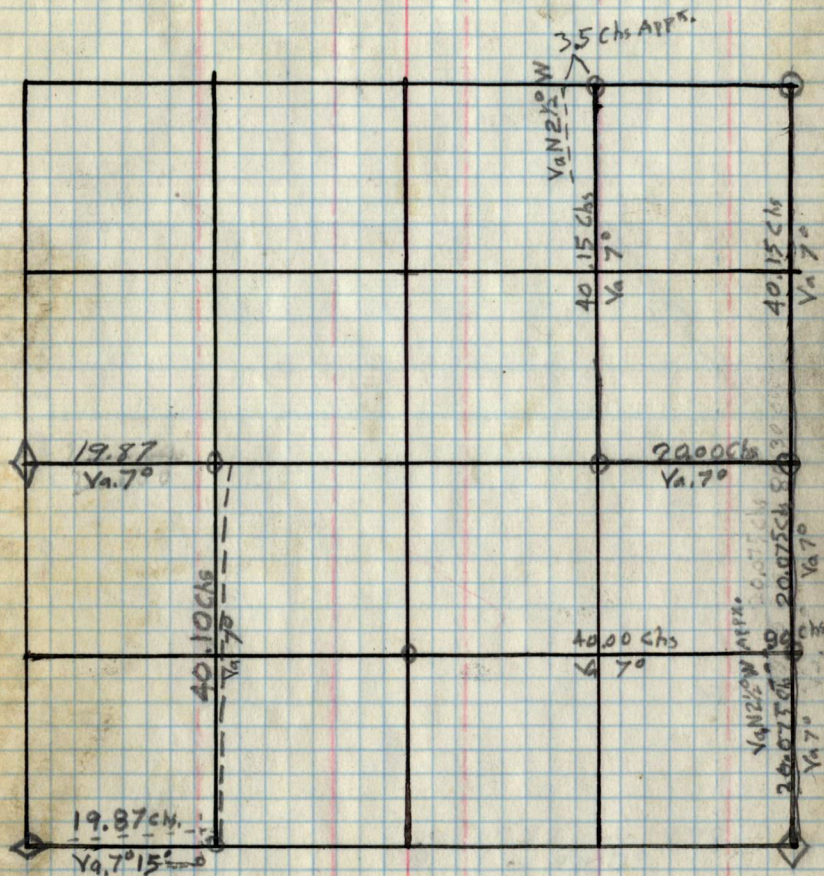
C. Smith 7/29/40  
 8/5/41  
 8/13/41

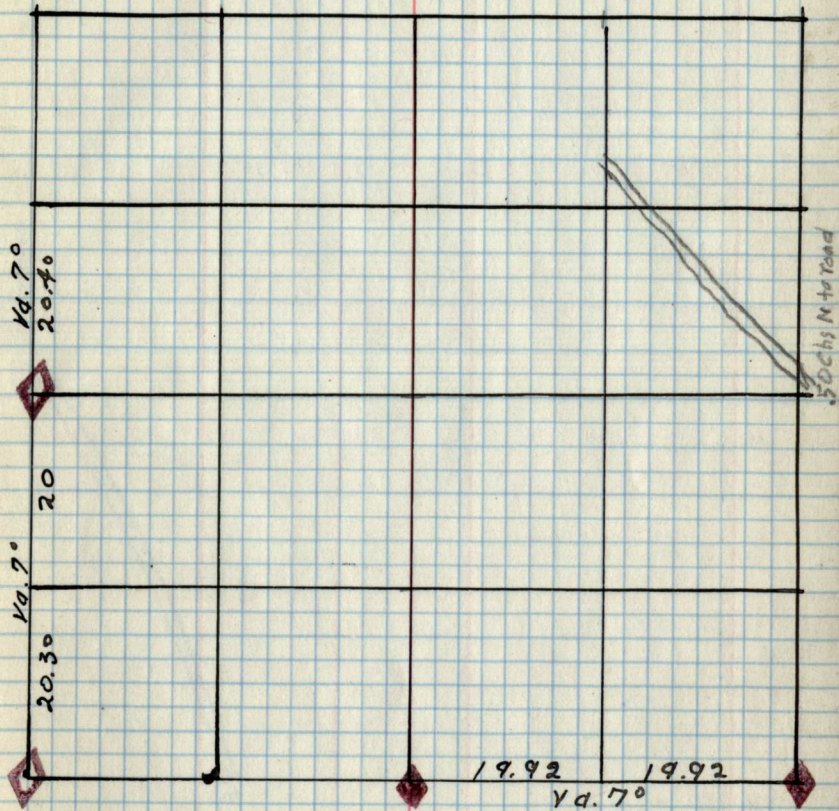






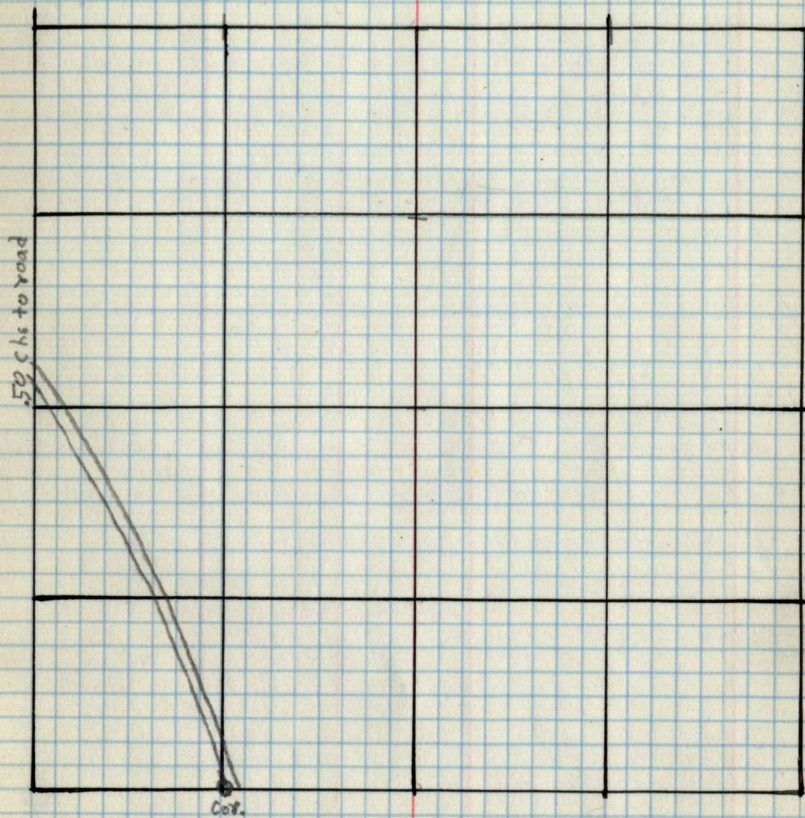
Cor	Post	B.T. Dia	Bearing	Remarks
SC <sup>1112</sup> <sub>1413</sub>	Birch 4" x 48"	R, Pine 24"	S 37° E .80 chs	F.S. Poster previously estab. B.T. scribed prev 1/21/42
SC <sup>211</sup> <sub>1112</sub>	Birch 4" x 48"	Birch 10"	N 80° E .10 chs	F.S. Poster estab. Appx Cor. estab. 1/28/42
E <sup>11</sup> <sub>11</sub>	Birch 4" x 48"	J. Pine 6"	N 52° E .22 chs	F.S. Poster estab. Appx Cor. estab. 1/29/42
S <sup>1112</sup> <sub>1112</sub>	Tamarack 3" x 48"	Tamarack 5"	S 21° E .13 chs	F.S. Poster estab. Appx Cor. estab. 1/29/42
SC <sup>11</sup> <sub>11</sub>	Tamarack 4" x 48"	Dalsam 8"	N 40° W .14 chs	F.S. Poster Estab. Appx Cor. estab. 1/29/42
<del>4</del> S <sup>1112</sup> <sub>1112</sub>	Aspen 3" x 40"	R, Oak 6"	N 25° E .30 chs	F.S. Poster estab. Appx Cor. estab. 1/29/42
EC <sup>11</sup> <sub>11</sub>	Tamarack 3" x 48"	Tamarack 5"	N 10° E .95 chs	Appx Cor. estab. F.S. Poster 1/29/42
<sup>10</sup> / <sub>15</sub> 11	Birch 4" x 40"	R, P 24"	S 35° E .39 chs	Appx Cor. prev. estab. B.T. Scribed F.S. Poster 2/2/42
W <sup>11</sup> <sub>14</sub>	Spruce 4" x 40"	Spruce 6"	N 10° W .45 chs	Appx Cor. pve. estab. F.S. Poster 2/2/42
WC <sup>11</sup> <sub>11</sub>	Tamarack 4" x 40"	Tamarack 6"	N 77° W .08 chs	Appx Cor. estab. F.S. Poster 2/2/42
<sup>1</sup> / <sub>4</sub> 5 10 11	W. Pine 4" x 40"	J. Pine 16"	N 83° E .84 chs	Appx Cor. prev. estab. BT scribed. F.S. Poster 2/3/42





12

12

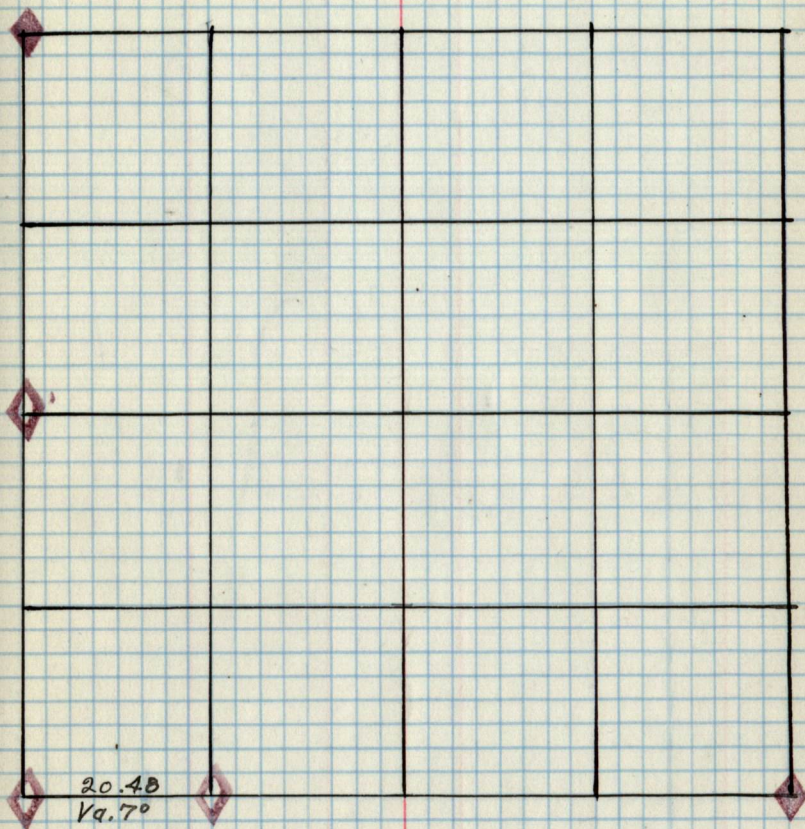


12

12

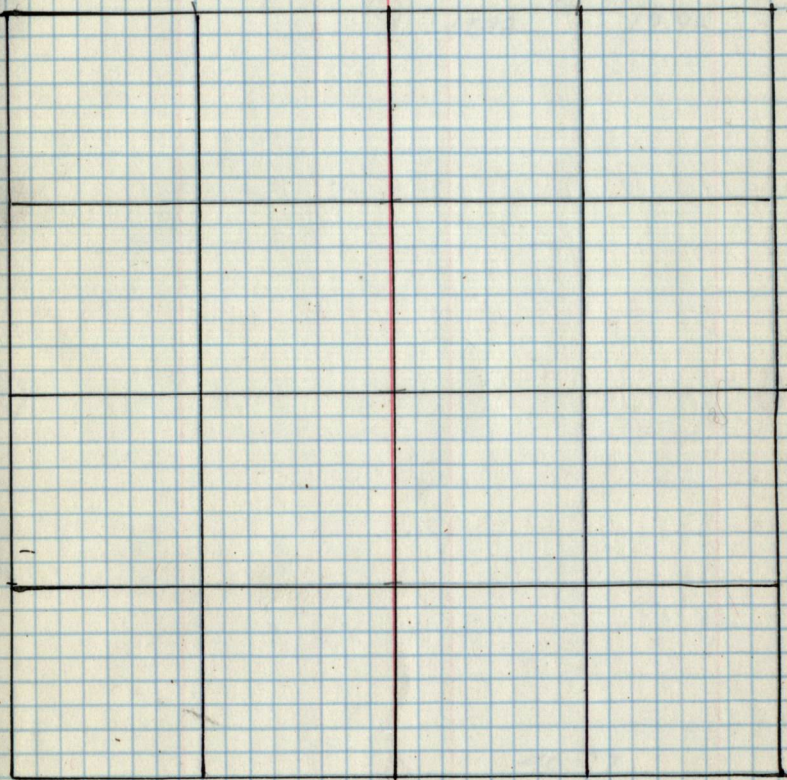

13

13

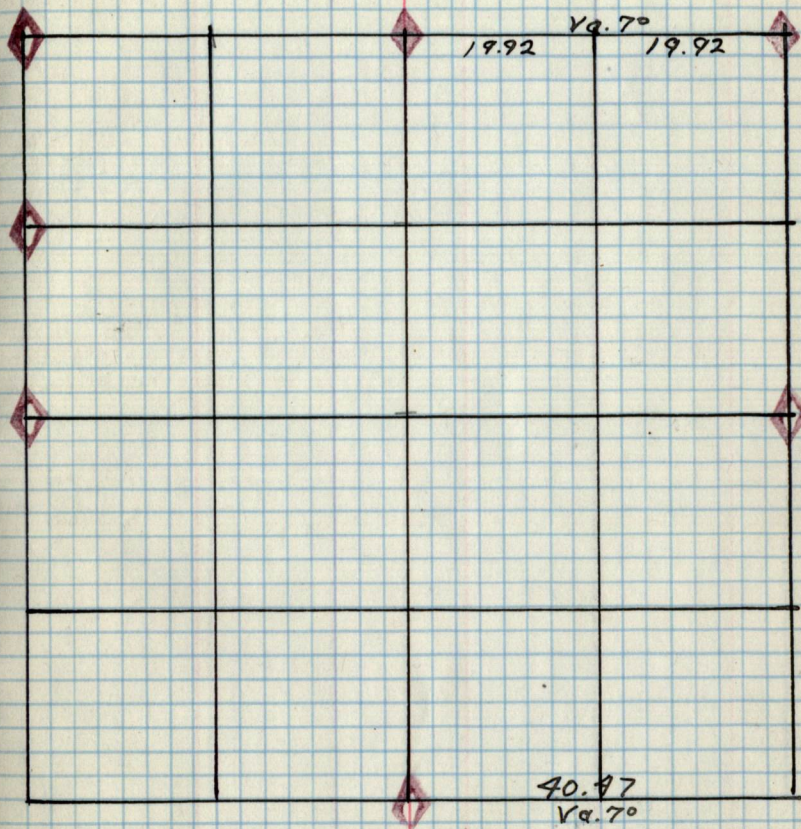



14

14





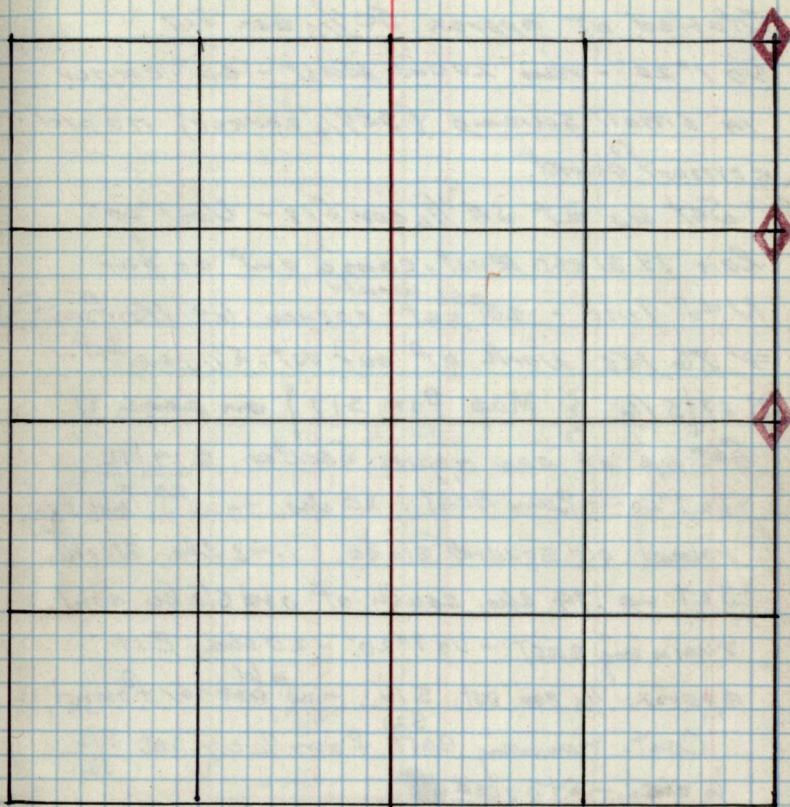


15

15


15

15





16 (Wed. Dec. 11, 1940)

Party - Layton, Schaitberger, Phelps,  
Whittaker, Egan - Moeller.

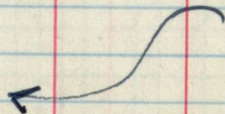
Started on stake 6 chs. east of  $\frac{1}{4}$  cor.  
bet. 516 - cont. running east Va 7°20'  
- 20 chs. est  $E \frac{1}{16}$  cor. bet. 516.  
in open Tamarack swamp - no corner  
found.

Set up at this  $E \frac{1}{16}$  cor. - cont. EAST  
Va 7°20' - 20 chs. - Est. Sec. cor bet 516/15  
- no corner found.  $\frac{21}{22}$

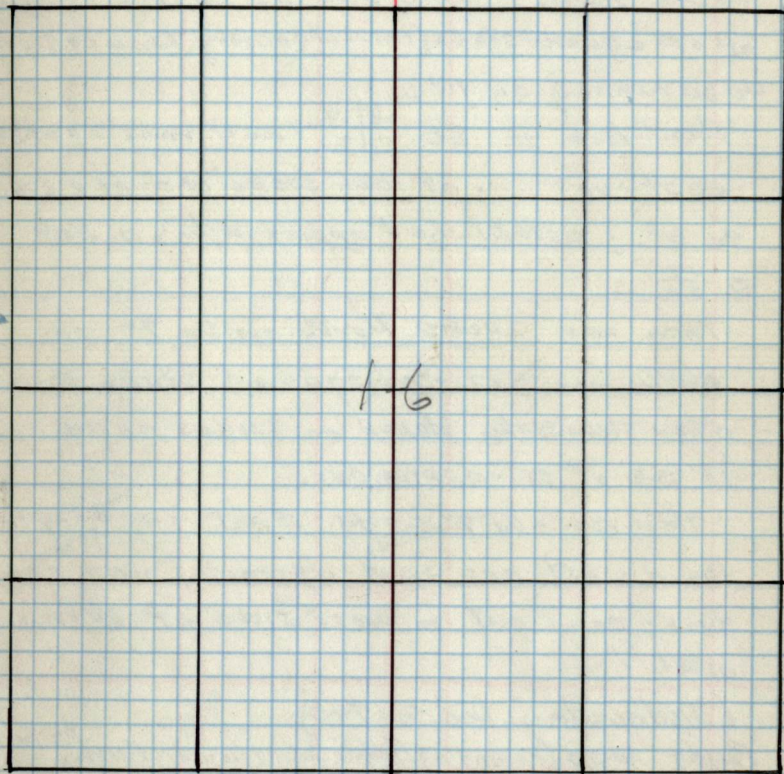
Set up at Sec. 16/15 - Va 7°15' ran north  
20 chs. - est.  $\frac{21}{22}$   $S \frac{1}{16}$  cor bet. 516/15  
no old corner found.

Changed Va. to 8° E at  $S \frac{1}{16}$  cor 516/15  
cont. running north - at  $\frac{18.09}{18.09}$  chs. N.  
came out .97 krs. west of genuine  
genuine Old general L.O. ~~sq~~ scribed stake.  
Chainage 1.96 short. Put up another  
poster & new square stake along  
side of old G.L.O. stake.

Map progress on other side



16



(Tuesday, Dec. 3, 1940)

Party - Layton (compass) Phelps, Schaitberger, Evers  
McEntire (Hoeller)

Started at SC  $\frac{18}{19} \frac{17}{20}$  - var.  $7^{\circ}30'$  ran  
20 chs. north - came out 85' east + 90' south  
of old sward stake (correct corner) Line believed  
to be running on  $11^{\circ}$  Va.

Went back to SC  $\frac{18}{19} \frac{17}{20}$  and ran 20 chs  
East - va.  $7^{\circ}$ ; at 10 ch. stake changed var.  
to  $6^{\circ}$ ; established approx. W $\frac{1}{2}$  cor. bet  
S  $\frac{17}{20}$ .

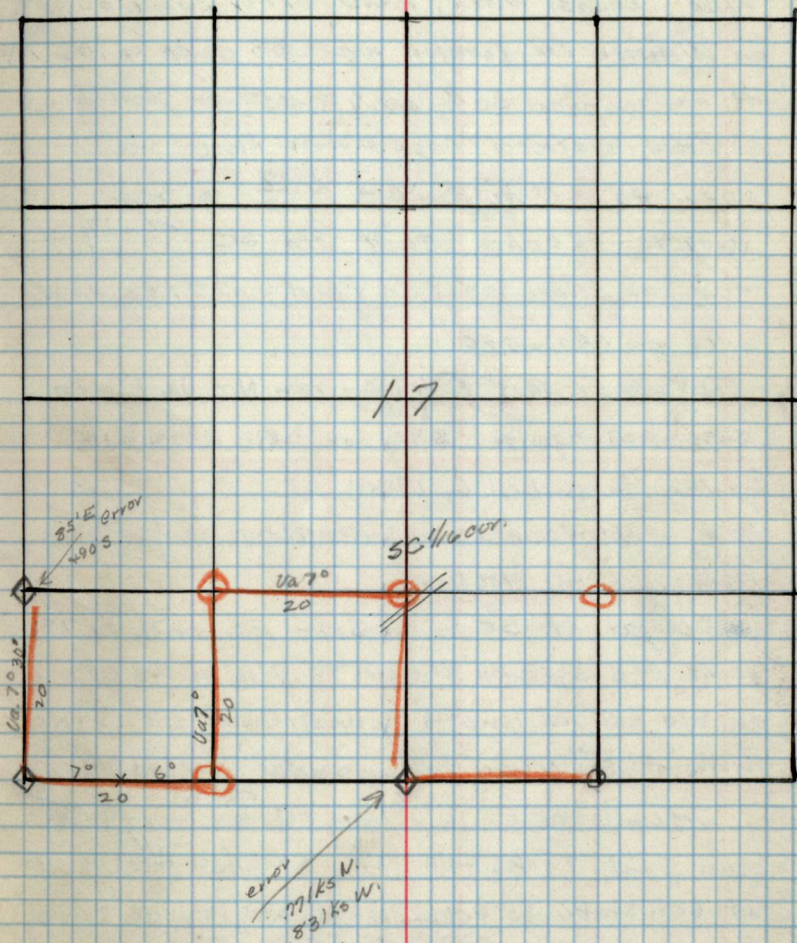
Then ran 20 chs. North on Va.  $7^{\circ}$  to  
SW $\frac{1}{4}$  cor. S17 - no squared stake found  
other than stake blazed on 2 sides about  
15' SE of est. approx. cor.

Then ran - Va.  $7^{\circ}$  20 chs. East - no corner  
found - est. one; put up metal tag on  
tree; came out on west side of Winnie  
road.

(Wednesday, Dec. 4, 1940)

Party - Layton (compass) Phelps, Schaitberger, Evers,  
McEntire,  
(Hoeller)

Started at approx SC  $\frac{1}{4}$  cor. - Va.  $7^{\circ}15'$  ran  
20 chs. south - came out 77 lks north + 83 lks  
west of old sward stake (scribed - believed to  
be correct corner.) Set up at  $\frac{1}{4}$  corner - Va.  $6^{\circ}30'$   
followed old line + ran 20 chs. E. to E  $\frac{1}{4}$  cor. but  
found squared cedar stake (came out 06 TRS  $\frac{17}{20}$   
+ 03 lks E.)





(Tues. Dec. 10, 1940)

Party - Layton, Schaitberger, Whittaker,  
Evon, Phelps - Moellen

Set up at old sq. stake - believed to  
be correct  $5\frac{1}{16}$  cor. bet. 518 & 517. Ran  
west - Va.  $7^{\circ}30'$ ; changed decl. to  $7^{\circ}15'$   
at 10 ch. stake. Est.  $SE\frac{1}{16}$  cor. at  
20 chs. W. No corner other than some  
blazes on trees - 1 ch. west (N & S direction)

Set up at  $SE\frac{1}{16}$  cor. 518 - Va.  $7^{\circ}15'$

ran west; at 2 ch stake changed Va. to  $7^{\circ}30'$

at 8 ch. stake changed Va. back to  $7^{\circ}15'$ ;

changed Va. to  $7^{\circ}30'$  at 18 ch. stake.

Ran a total of 24 chs. west.

(*should have been only 20 chs. west*)  
4 chs. too far west.

Established supposed  $SE\frac{1}{16}$  cor. 518

Ran north Va.  $11^{\circ}15'$  - 20 chs. - Est.

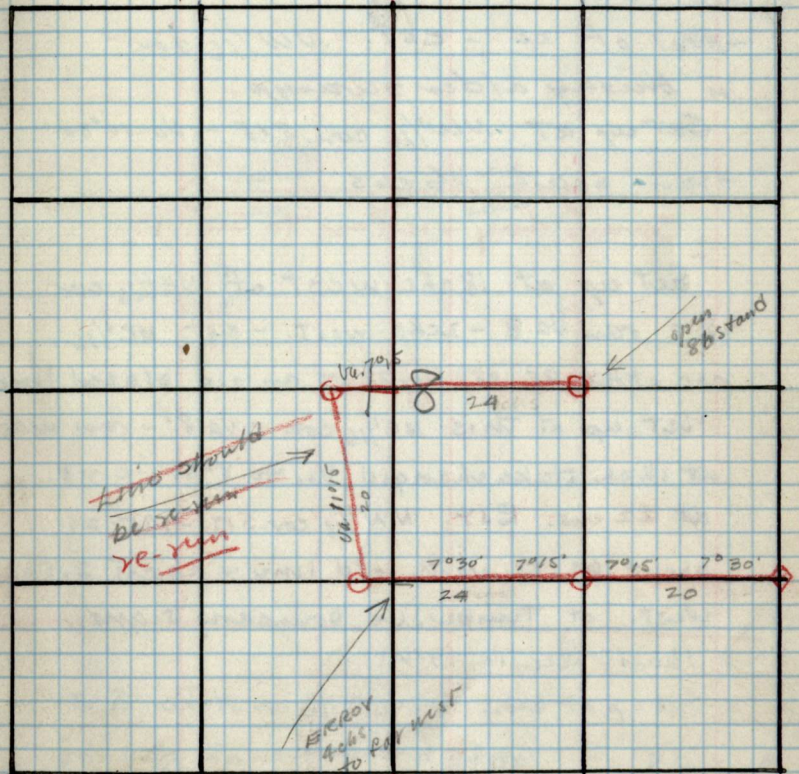
$C\frac{1}{4}$  cor. 518 - (this north line needs  
to be re-run)

Set up at ( $C\frac{1}{4}$  cor. 518) - Va.  $7^{\circ}15'$

Ran 6 chs. East.

Dec. 20, 1940

Line above described was re-run  
on this date - came out on North  
end. of chs. east. on old 4 ch. E stake.





(Friday Dec. 13, 1940)

Party - Layton, Phelps, Evon, Waldock,  
Whittaker - Moeller

Set up 8 chs. West. of NW $\frac{1}{16}$  cor  
S18 - Va.  $7^{\circ}20'$  - ran 12 more chs. west  
total of 20 - est. NW $\frac{1}{16}$  cor. -  
in brushy alder swamp.

Set up at NW $\frac{1}{16}$  cor. S18 - Va.  $10^{\circ}30'$   
- ran south 16 chs.

Same day - refer to Sec. 17.

Set up at 18 chs. West of NE $\frac{1}{16}$  cor.  
S17 ran Va. 8 - 2 chs. west. - est. NW $\frac{1}{16}$   
cor. about .85 lks. North of an old blazed line

Set up at this NW $\frac{1}{16}$  cor. - Va.  $8^{\circ}$  - ran west  
at 12 ch. stake changed Va. to  $8^{\circ}30'$  - cont.

at 22 chs. Est. NW $\frac{1}{16}$  cor. S17 - 145-27.

about .60 lks North old line & about 2.5 chs  
West. of Timber Site boundary signs.

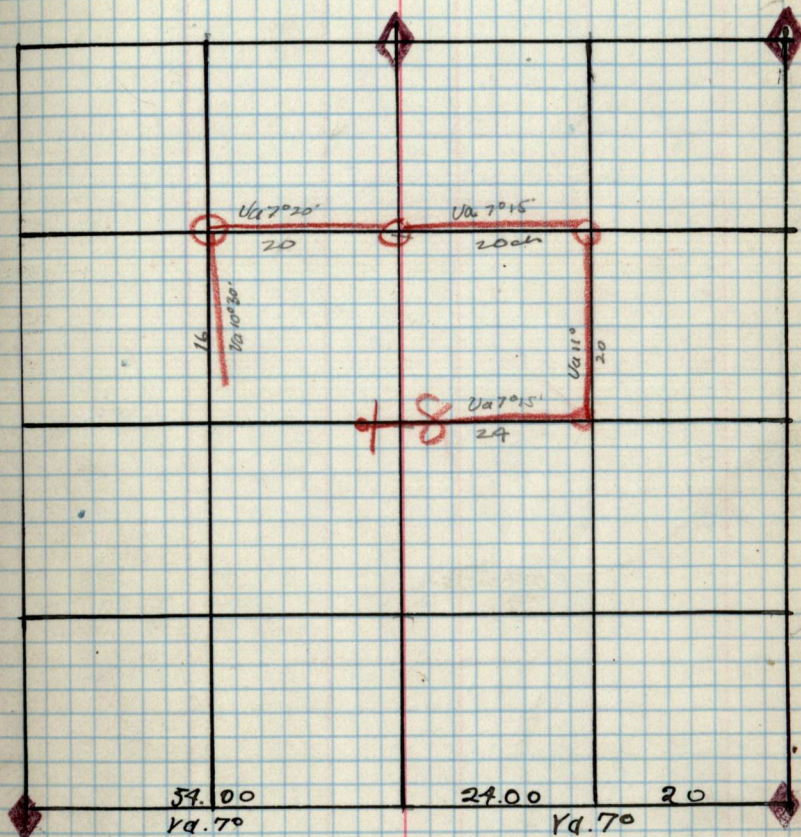
(Thurs. Dec. 12, 1940)

Set up at 6 ch. W. to C $\frac{1}{4}$  cor stake S18  
- Va.  $7^{\circ}15'$  - cont. running east - 24 chs.

Est. EC $\frac{1}{16}$  cor.

Ran north Va.  $11^{\circ}$  - 20 chs - est. NE $\frac{1}{16}$  cor. -  
put FS poster - found tree stub blazed & sides  
30 lks west + .14 lks North.

Est. NE $\frac{1}{16}$  cor. S18 - ran west Va.  $7^{\circ}15'$  24 ch  
Est. NW $\frac{1}{16}$  corner (changed to 20)

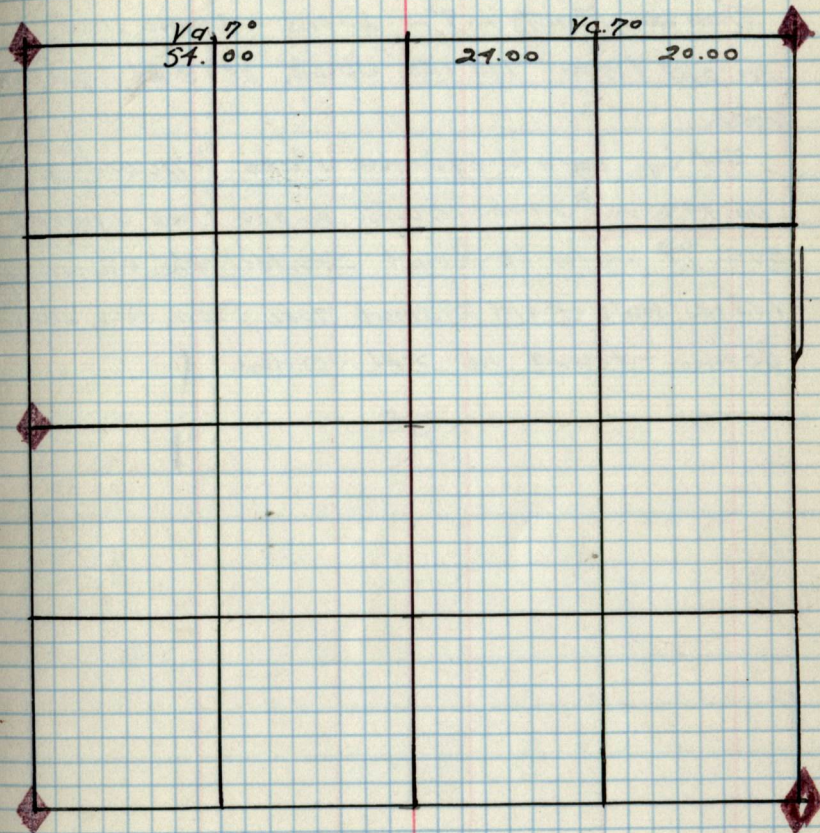


D

19

19

A hand-drawn 4x4 grid is drawn on the right page of the notebook. The grid is composed of black lines forming a large square divided into 16 smaller squares. The grid is positioned in the lower half of the page, with its top edge approximately halfway down the page and its bottom edge near the bottom margin. The grid is drawn on a page with light blue horizontal and vertical grid lines. A red vertical margin line is visible to the left of the grid.

(Wed. Dec. 4, 1940. Continued)

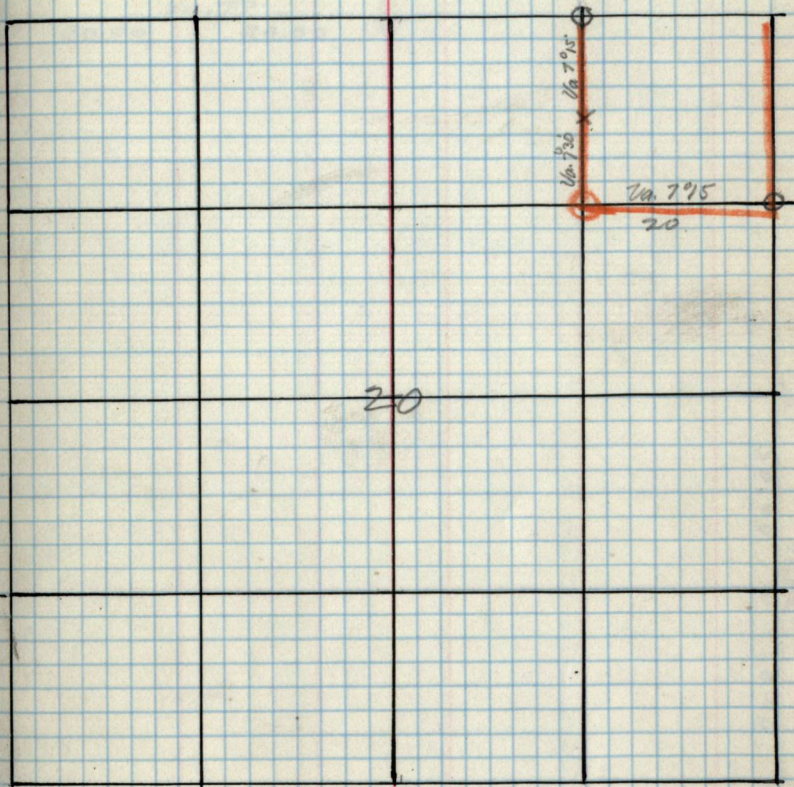
Started at E  $\frac{1}{16}$  cor. bet  $S \frac{17}{20}$  - var  $7^{\circ}15'$  <sup>+  $7^{\circ}30'$</sup>

ran 20 chs south on old line - found no

squand stake - est. approx. NE  $\frac{1}{16}$  cor. 520.

Then ran East Va.  $7^{\circ}15'$  20 chs. - came out  
on old line 1.15 kts. South of old squand  
stake.

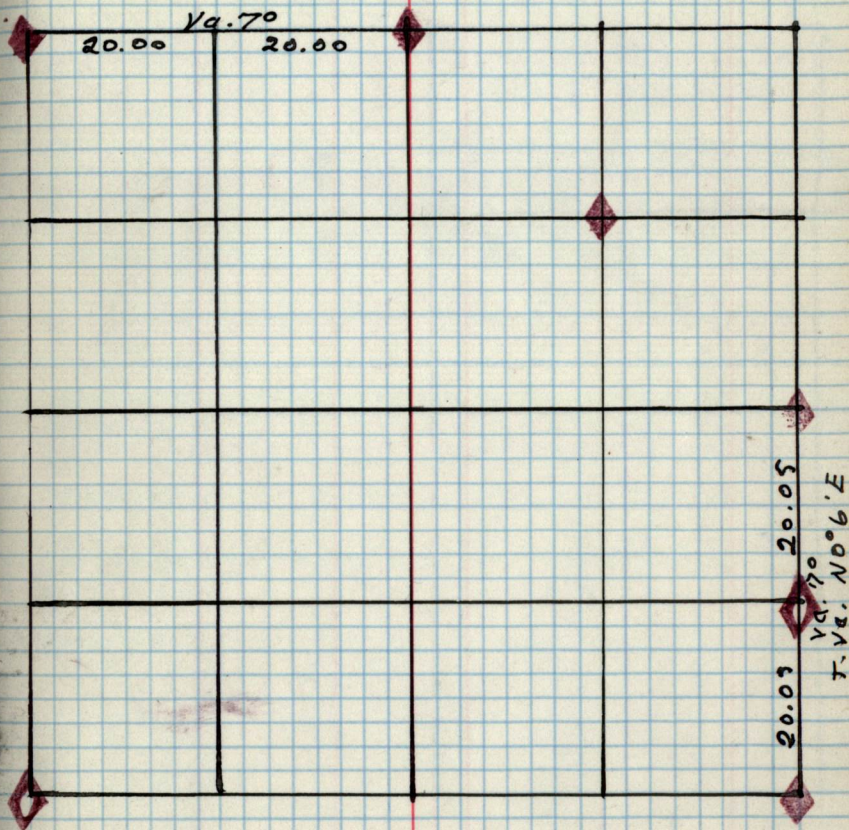
Set up on old squand stake N  $\frac{1}{16}$  cor. <sup>bet  $S \frac{20}{21}$</sup>   
Va.  $7^{\circ}$  + ran 20 chs. North on old line where-  
ever it could be found. Started the chaining,  
1.15 kts south of old squand stake, from our own  
corner - found no real corner



B

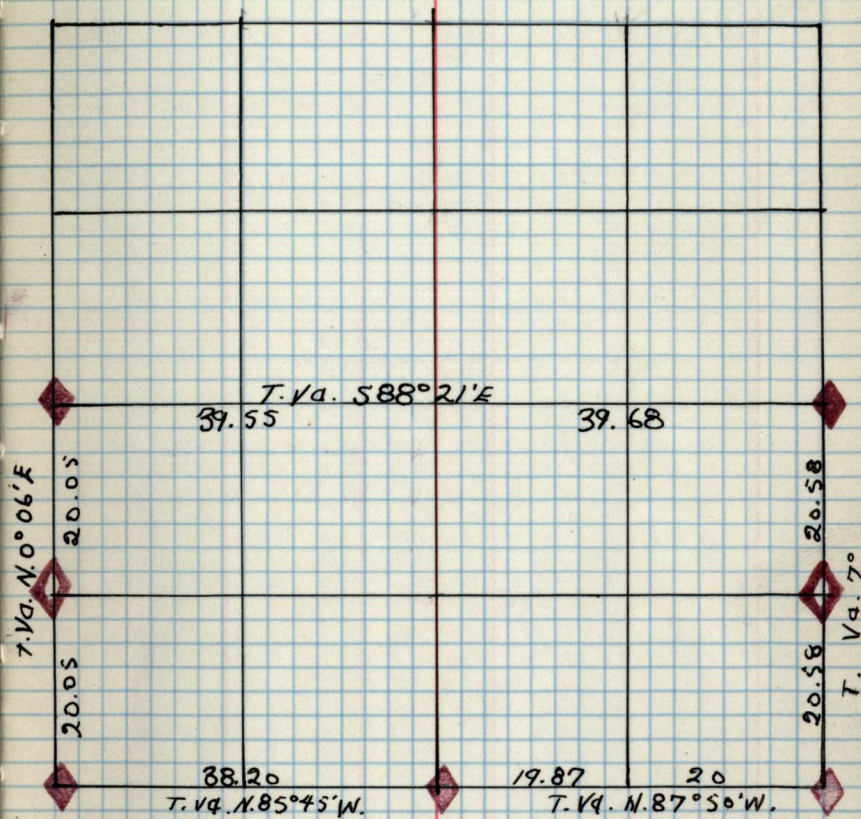
20

201



21

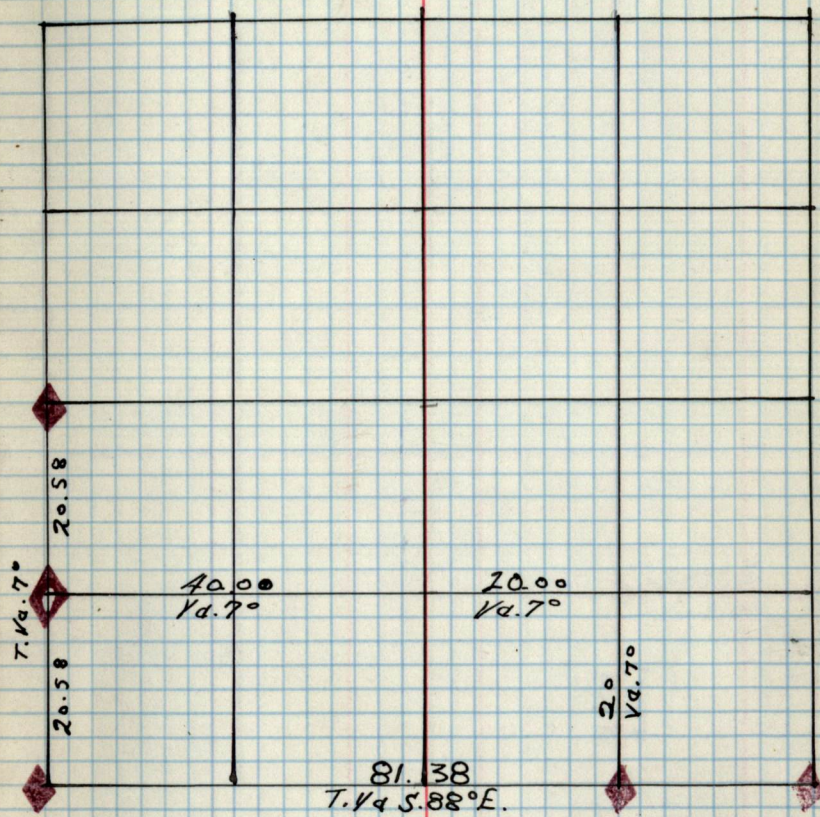
21

22

22



23

COY. Post B.T. Dia Bery

E 1/16 23/24

S. E 1/16

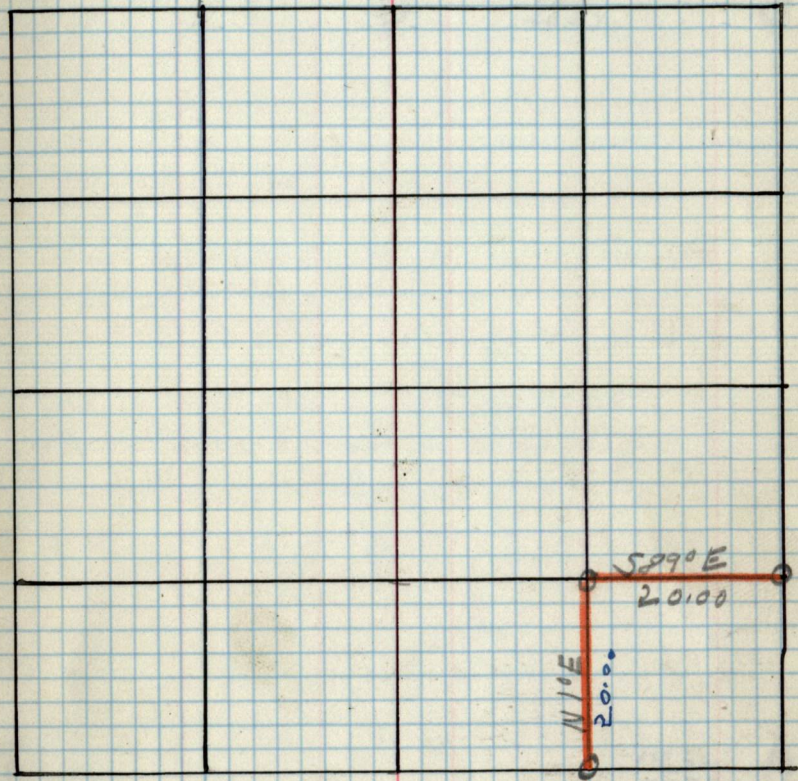
S 1/16 23/24

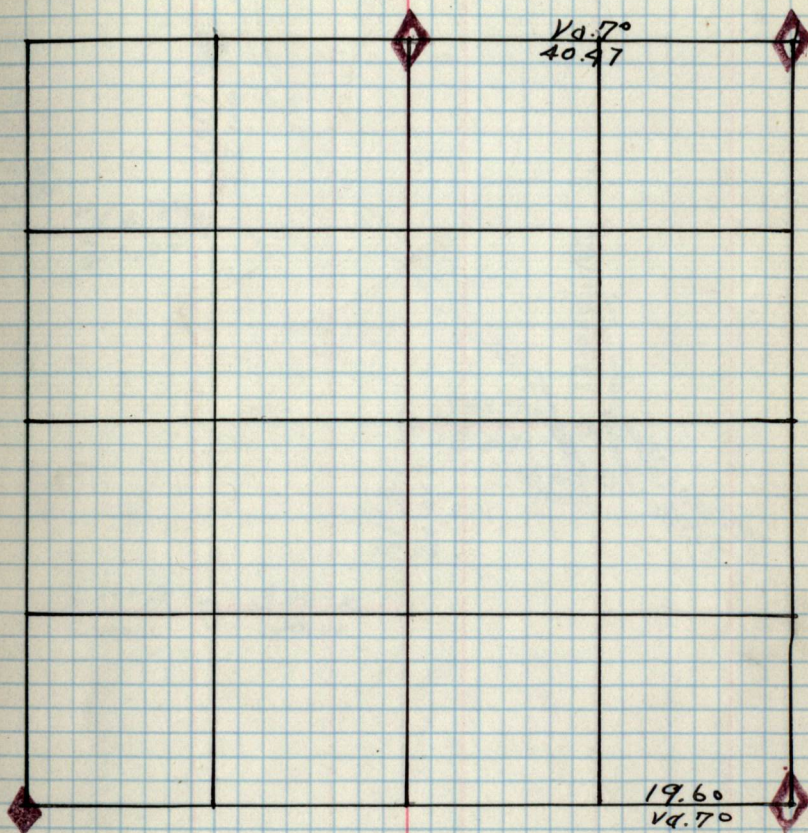
REMARKS.

Run 3/20/44

C.E.S.

23

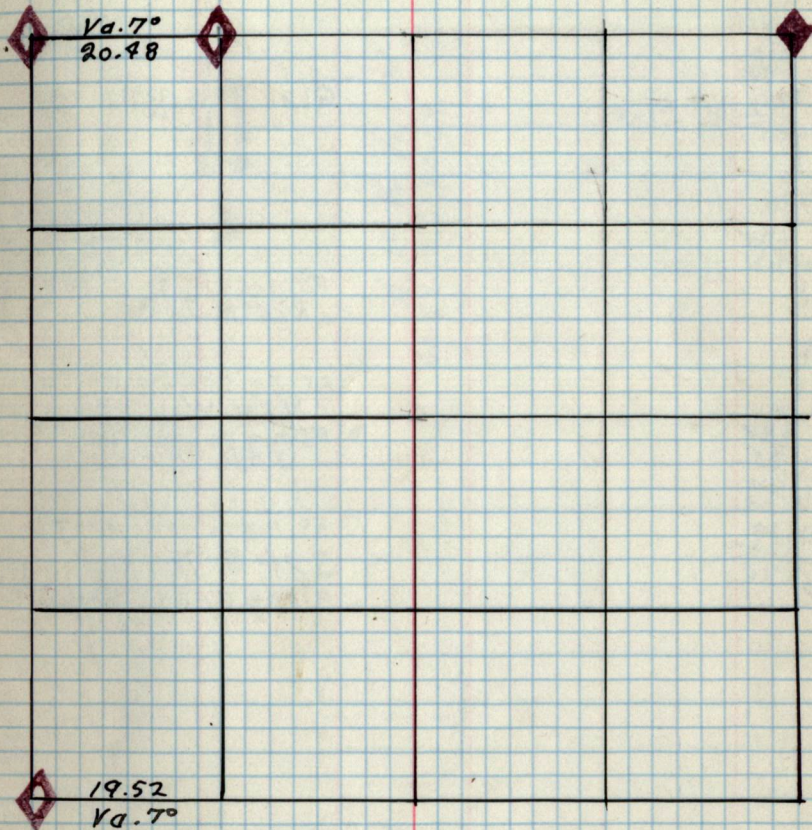






24

24



25

Coy Post B.T. Dia. Bear

26/25 4" Pine J.P. 16 N33°E 17

Remarks  
F.S. post on B.T.

S 1/16 26/25 4" aspen

1/4 26/25

N 1/16 26/25

23/24 4" Pine  
24/25

N.W. 1/16

W 1/16 24/25

C.W. 1/16

C 1/4

N.C. 1/16

1/4 24/25

E 1/16 24/25

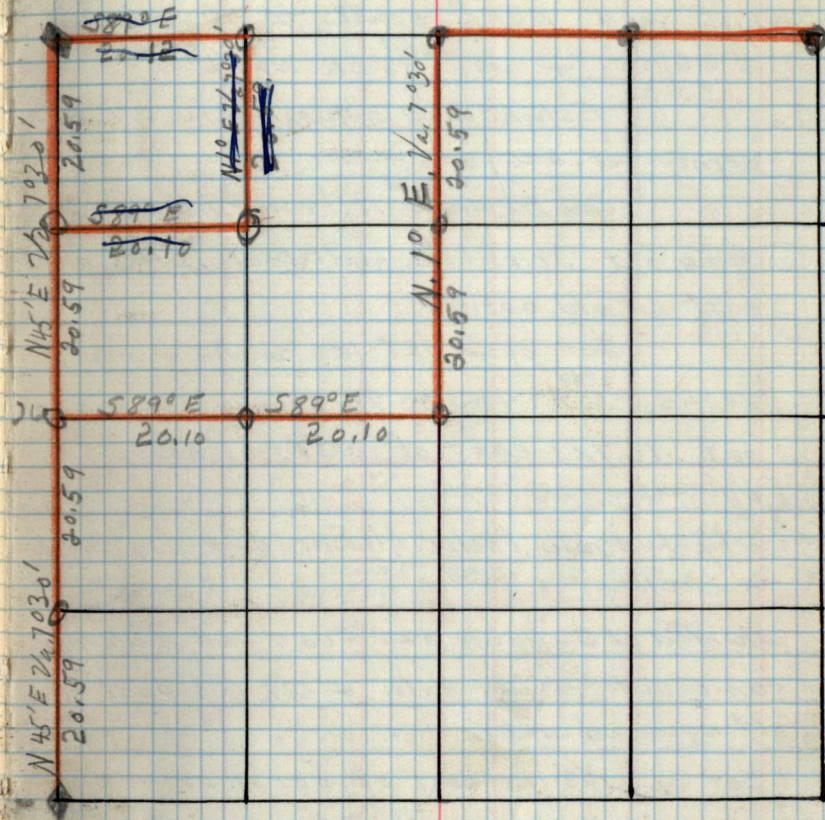
24/19

25/30

G.L.O. No B.T.s Found

F.S. post on 5" Tam  
N28°E 7 Ks.F.S. post on 5" Tam  
N53°W 8 Ks.F.S. post on 10" Tam  
S78°W 7 Ks.F.S. post on 16" J.P.  
S81°E 70 Ks.  
along road 3/2/41

25'



25 (November 27, 1940)

Party - Ludgate, Phelps, McEntire, Layton,  
Scharfberger - (Mueller).

Started at FS poster on Nushka Trail  
which read 2 chs<sup>?</sup> south to SC, but

526/25 + ran <sup>about</sup> 18 ch north.

35.36 Established approximate S<sup>1</sup>/<sub>4</sub>

corner bet. 526/525.

Ran 20 chs. east from S<sup>1</sup>/<sub>4</sub> cor.

Came out .17 kls. north and about .12 kls  
east of old corner.

Set over .085 kls. south + ran  
20 chs. east to SC <sup>70°30'</sup> corner - came  
out .16 kls. east of old FS corner.

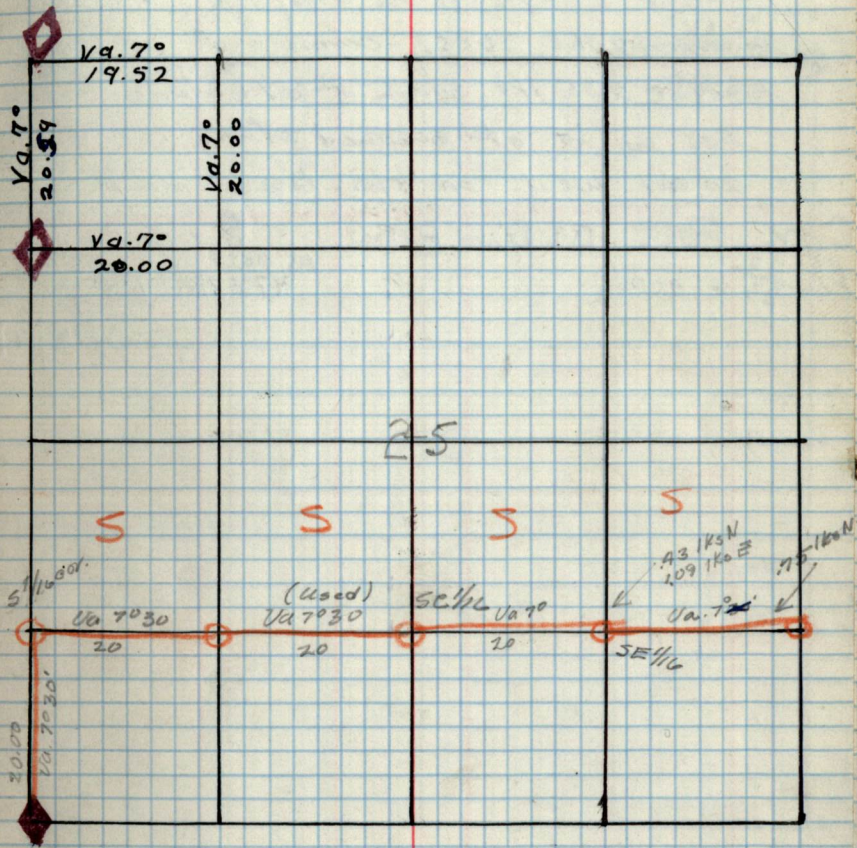
(November 28, 1940)

Party - Ludgate, Phelps, McEntire, Layton, Scharfberger,  
- Mueller

Started at SC <sup>1</sup>/<sub>4</sub> cor. 525 - Va. 7 and ran 20 chs.  
came out .43 kls north + 1.09 kls east of  
old squared stake.

Set up 1.09 kls east of old stake on old  
line - Va. 7°30' + ran 20 chs E. - came out .75 kls  
north of old line - no squared stake found

25



26 (Monday, Dec. 2, 1940)

Party - Layton-Compan, Schaitberger, Phelps  
McIntire (Hoeller)

Started a  $5\frac{1}{16}$  cor. bet S26/S25 - Va.  $7^{\circ}30'$   
+ ran 20 chs. west. - came out .25 lks  
East + .435 lks. south of old <sup>squared</sup> stake

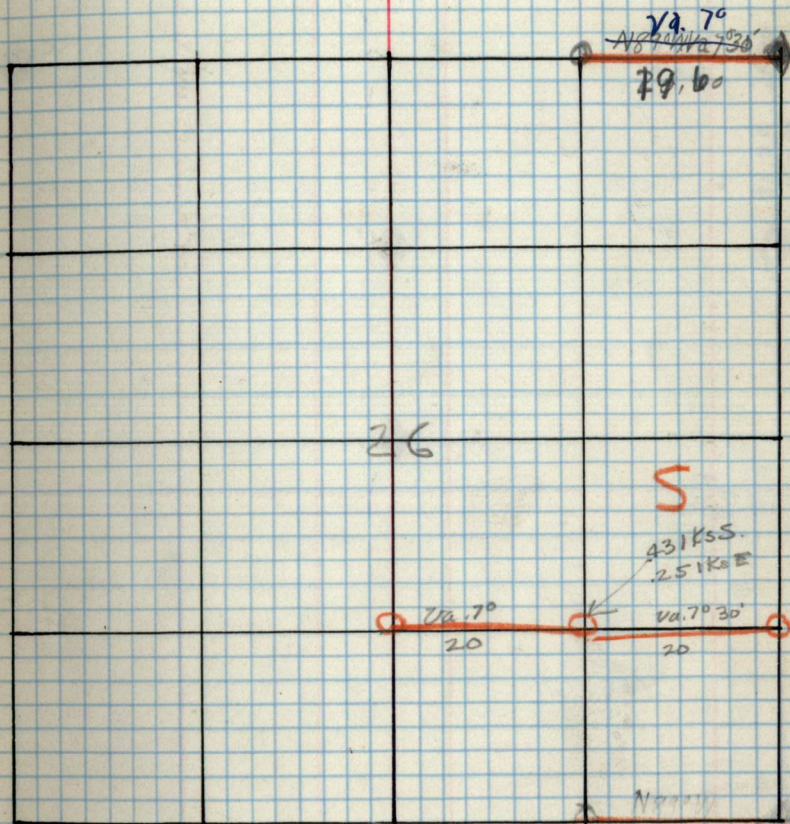
Set up at old squared stake + ran  
20 chs. west on old line - Va  $7^{\circ}$

COY. Post BT. Diam Bear.

E  $\frac{33}{26}$  4' 25 Pen

Rem 24 Ks.  
FS. Post + Y on 8" bind  
N  $7^{\circ}E$  8 Ks. C.E.S  
3/14/41

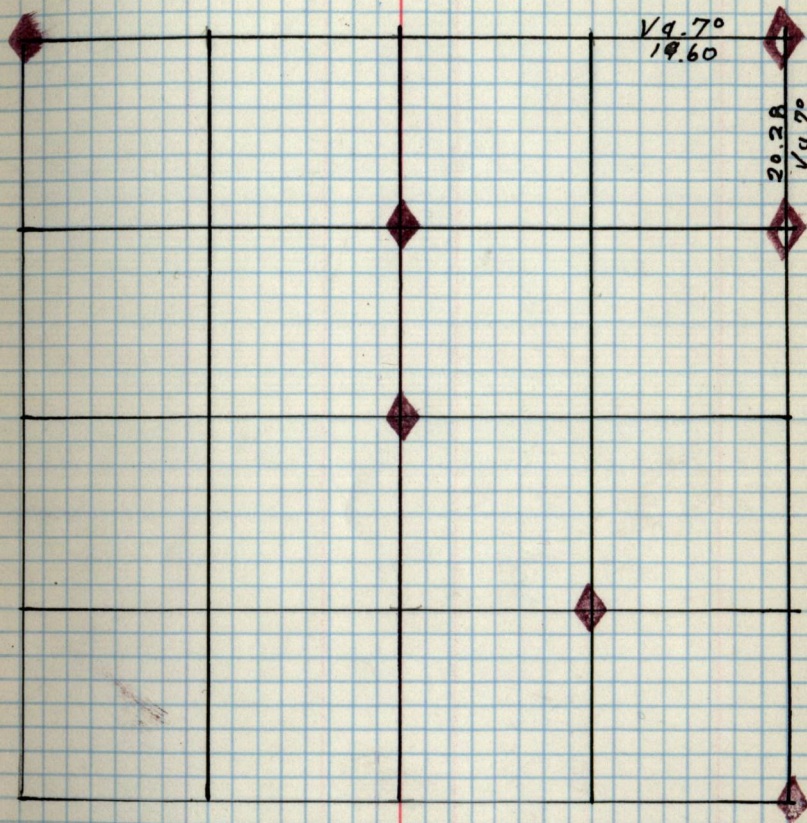
26





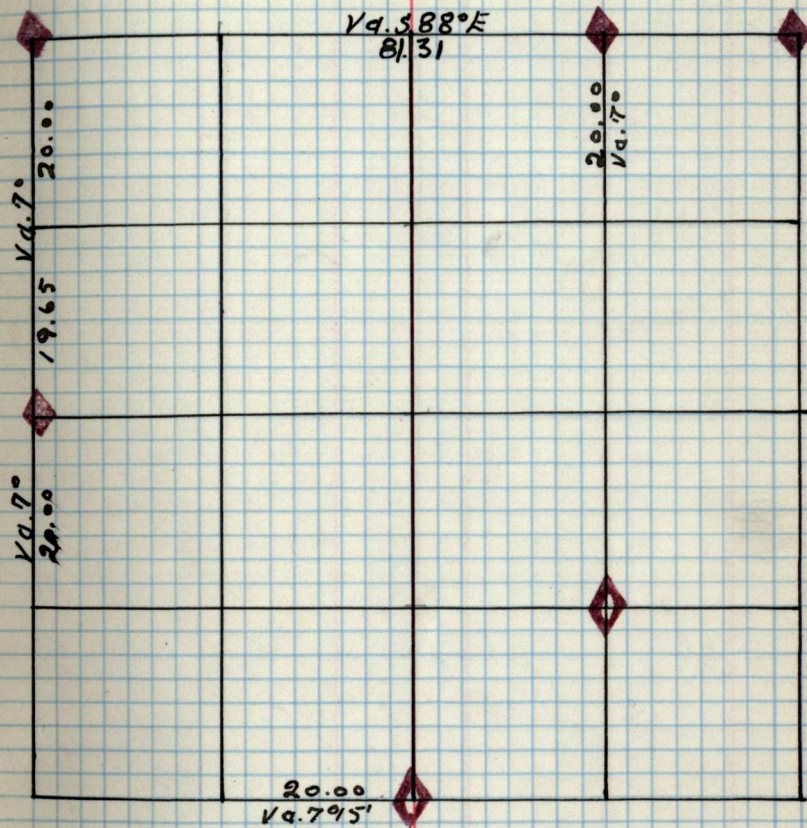
26

26



27

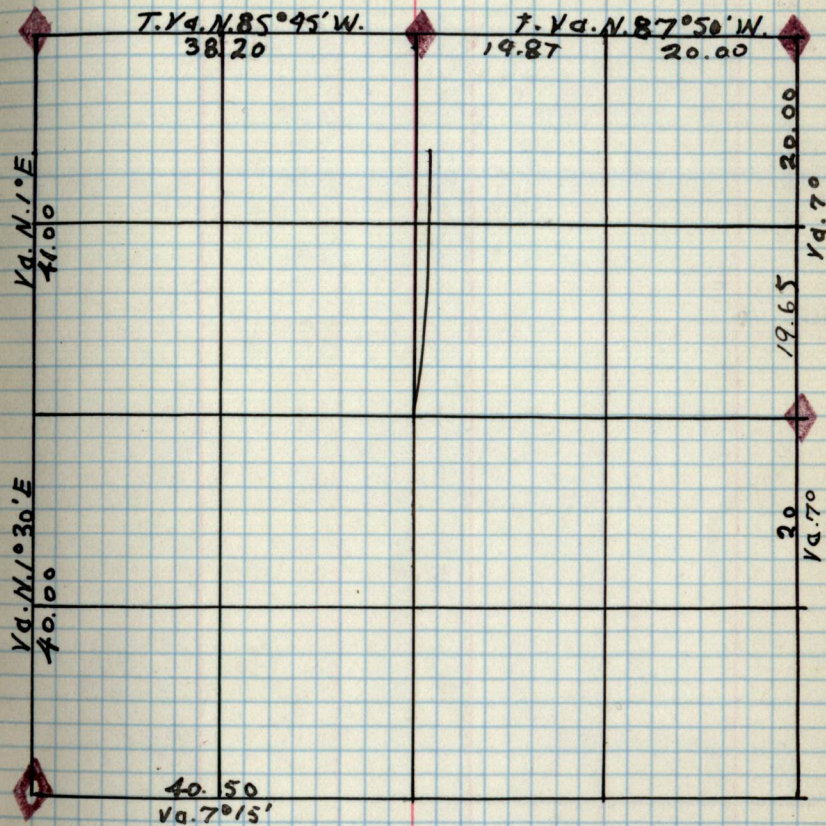
27

28

28

A 4x4 grid is drawn on the right page of the notebook. The grid consists of 4 columns and 4 rows of squares, totaling 16 cells. The grid is drawn with black ink on the blue-lined graph paper.

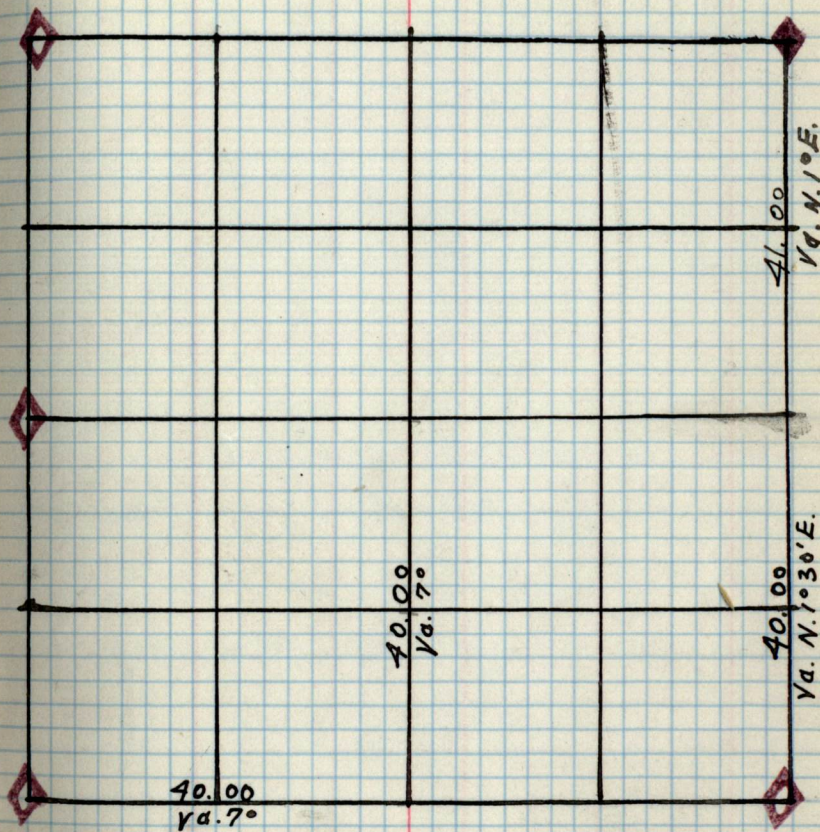
29

29


29

28

29



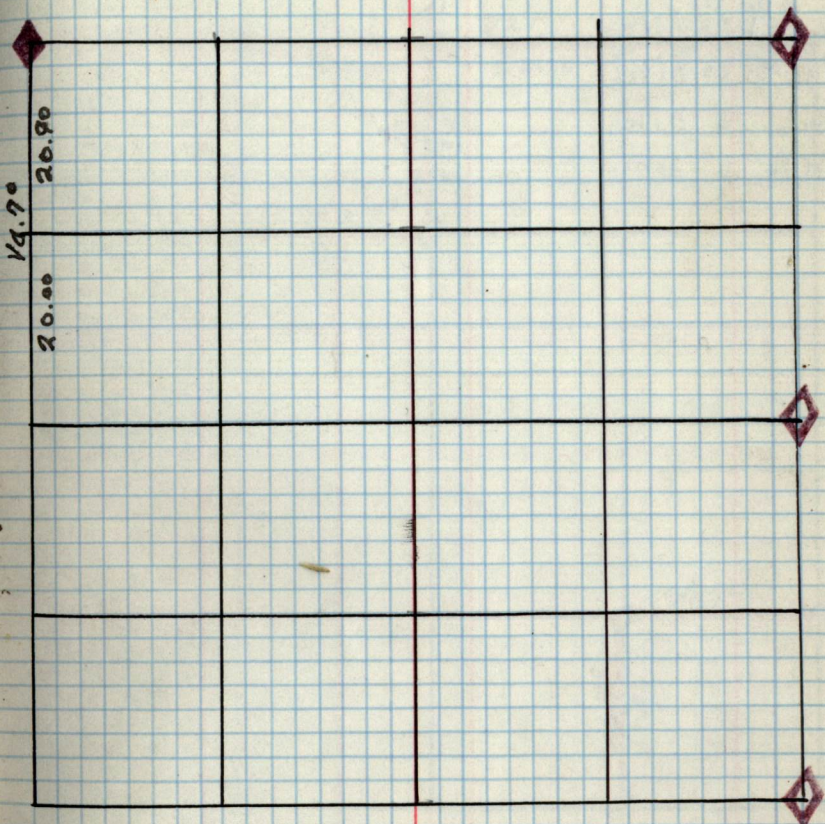
30

30




30

30



3br. Post B.T. Dia Bear.

Remarks  
F.S. post on 8" 6 also  
S 30° E 441 Ks.

SE 1/4 3" aspen

W 1/4 31 3" aspen

E 1/4 ~~30~~/~~31~~ 3" aspen

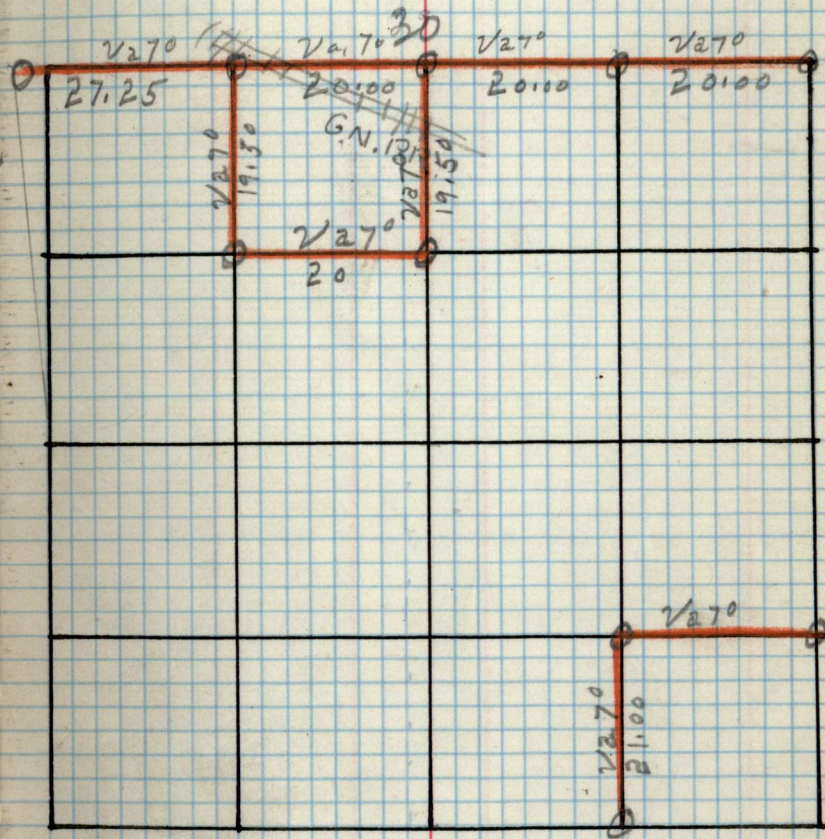
1/4 ~~30~~/~~31~~ 3" aspen

W 1/4 ~~30~~/~~31~~ 4' birch

N.C. 1/4 4" birch

NW 1/4 4" aspen

31



31

31

A 4x4 grid is drawn on the right page of the notebook. The grid is composed of 4 rows and 4 columns of squares, defined by black lines. The grid is positioned on the right side of the page, with a vertical red margin line to its left. The grid is empty.


32 Post B.T. Dia. Bear

Remarks

G.L.O. brass capped pipe

31/32  
T145 4" aspen

Sec. cor

5/6 2" aspen NP 16" N72°E64

T144

G.L.O. brass capped pipe

JR 10" N18°W80

W 1/2 32 3" J.P.

1/4 32 4" aspen NP 10" N8°E30

G.L.O. brass capped pipe

1/4 5 NP 18"

G.L.O. brass capped pipe

SC 1/6 4" birch

C 1/4 3" aspen

NC 1/16 4" birch

1/4 29 32 4" birch

NW 1/4 3" oak

FS. post on 8" aspen  
S. 47° W 10' 1ks  
FS. post on 6" tam.  
S. 3° W 30' 1ks.

3/10/41

FS. post on 6" J.P.  
due W 8' 1ks.

C.W 1/6 4" birch

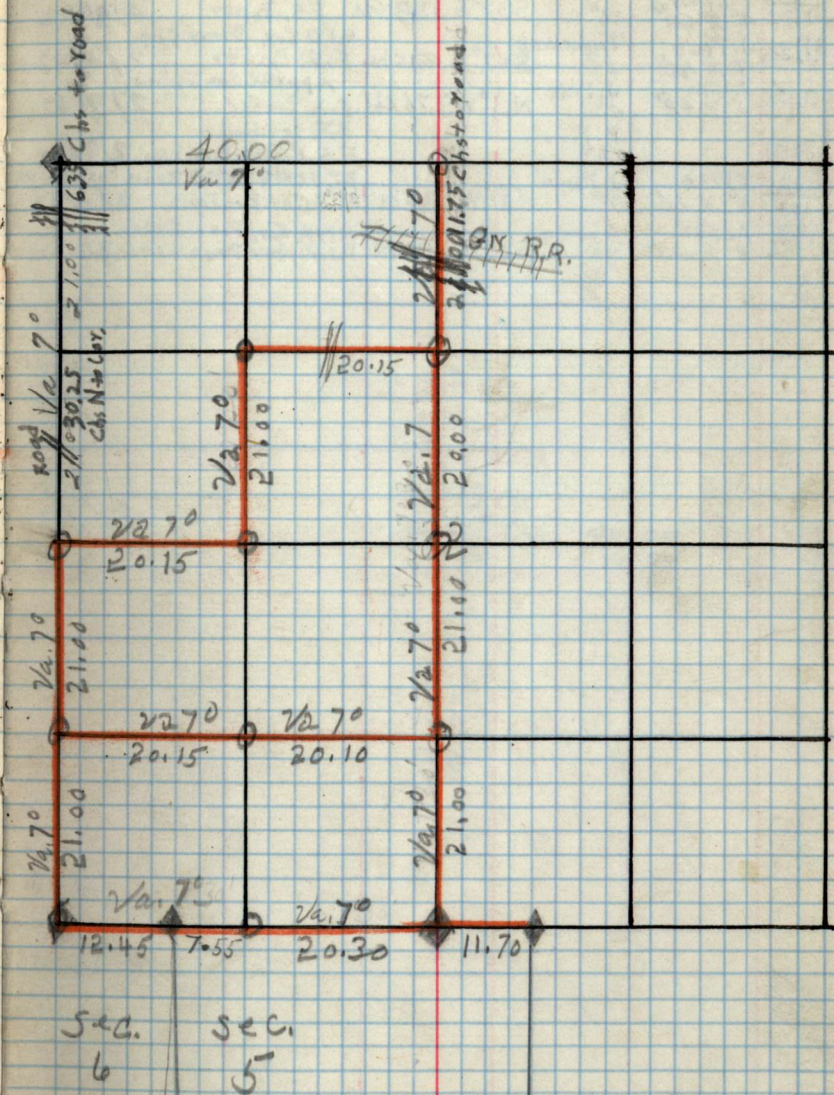
1/4 31/32 3" aspen

SW 1/4 31/32 3" aspen

SW 1/4

FS. post on 7" birch  
S. 15° E 4' 1ks.  
FS. post on 5" tam.  
S. 32° W 7' 1ks

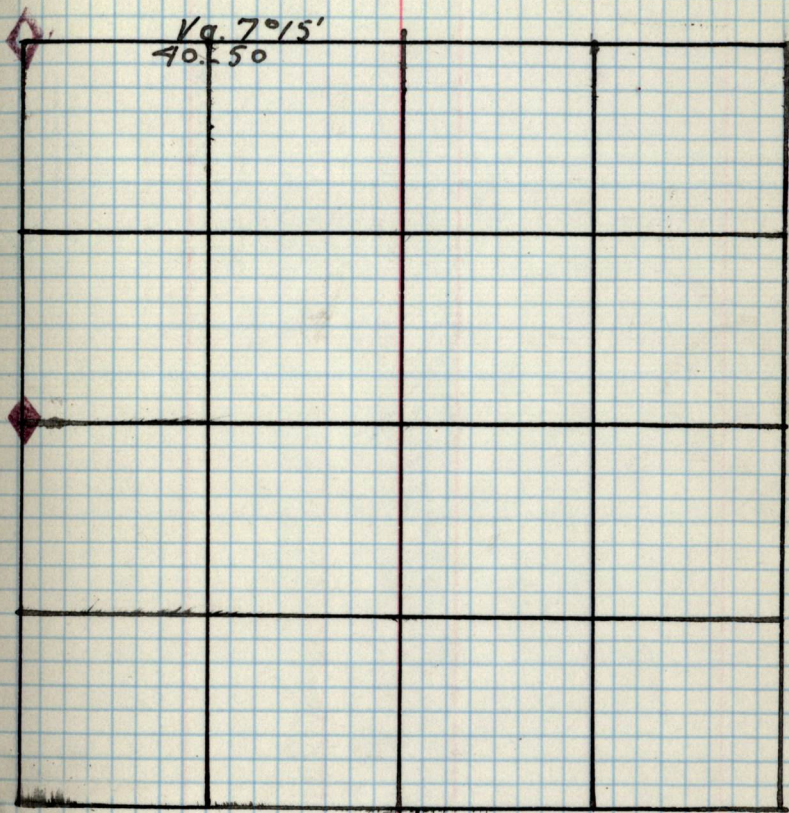
32





33

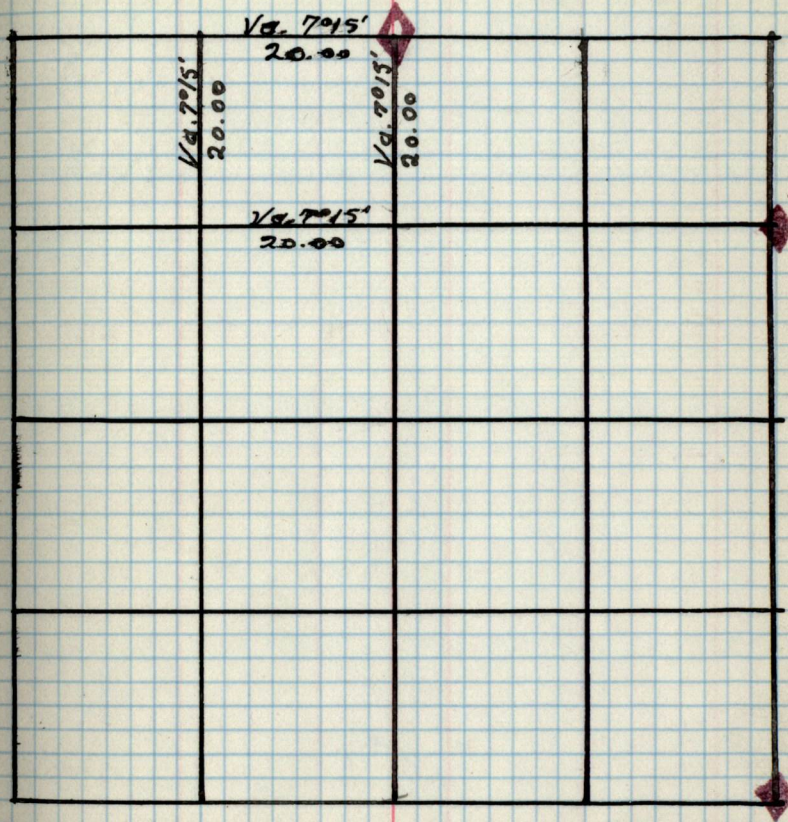
33

34

34



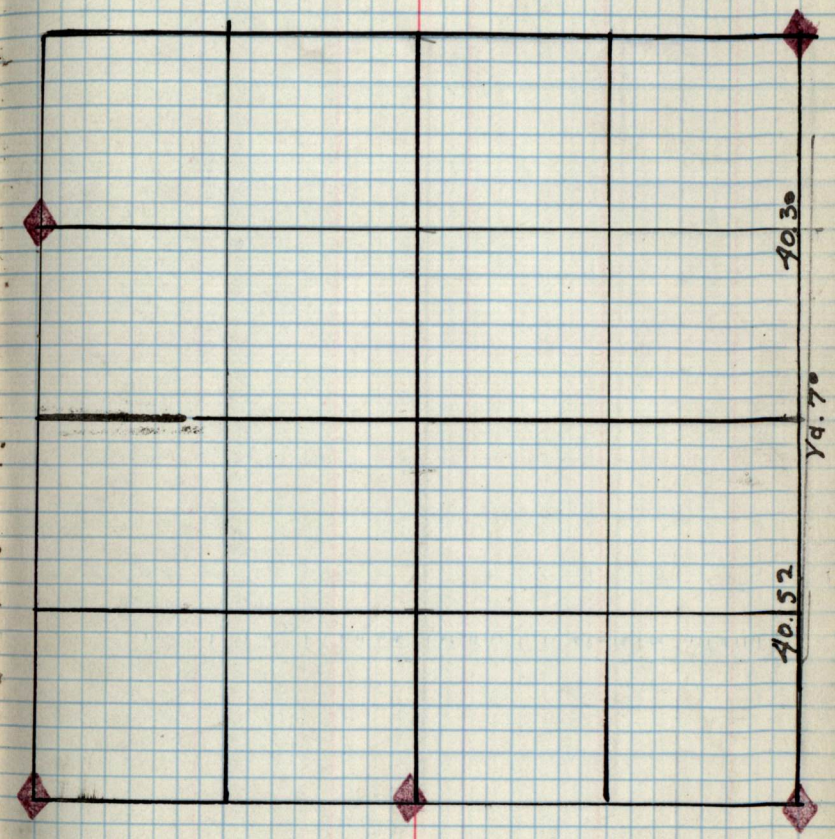



35

35


3  
36'

35



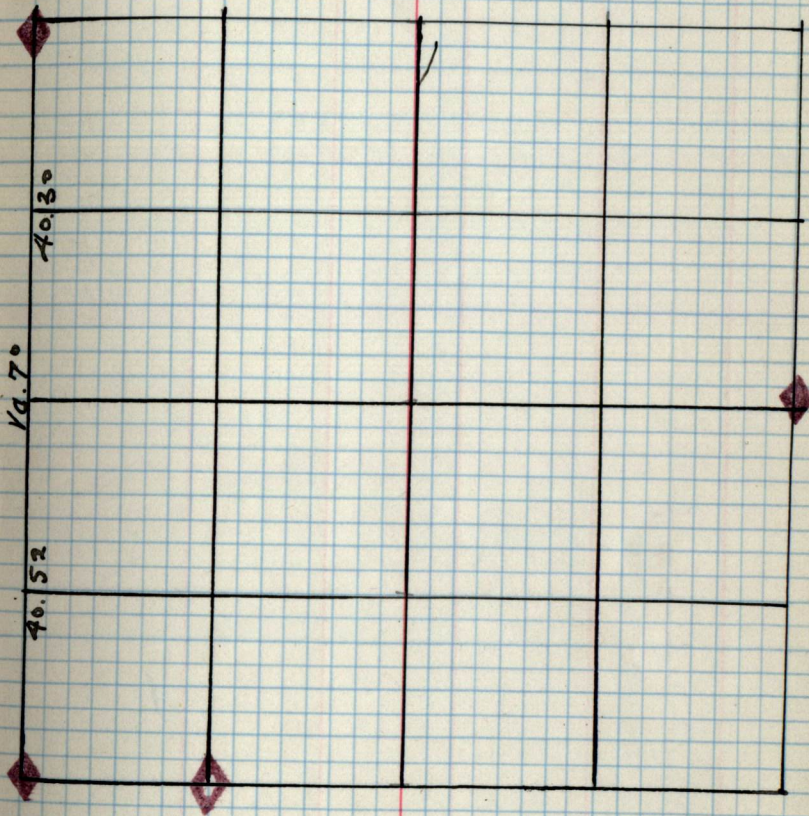
36

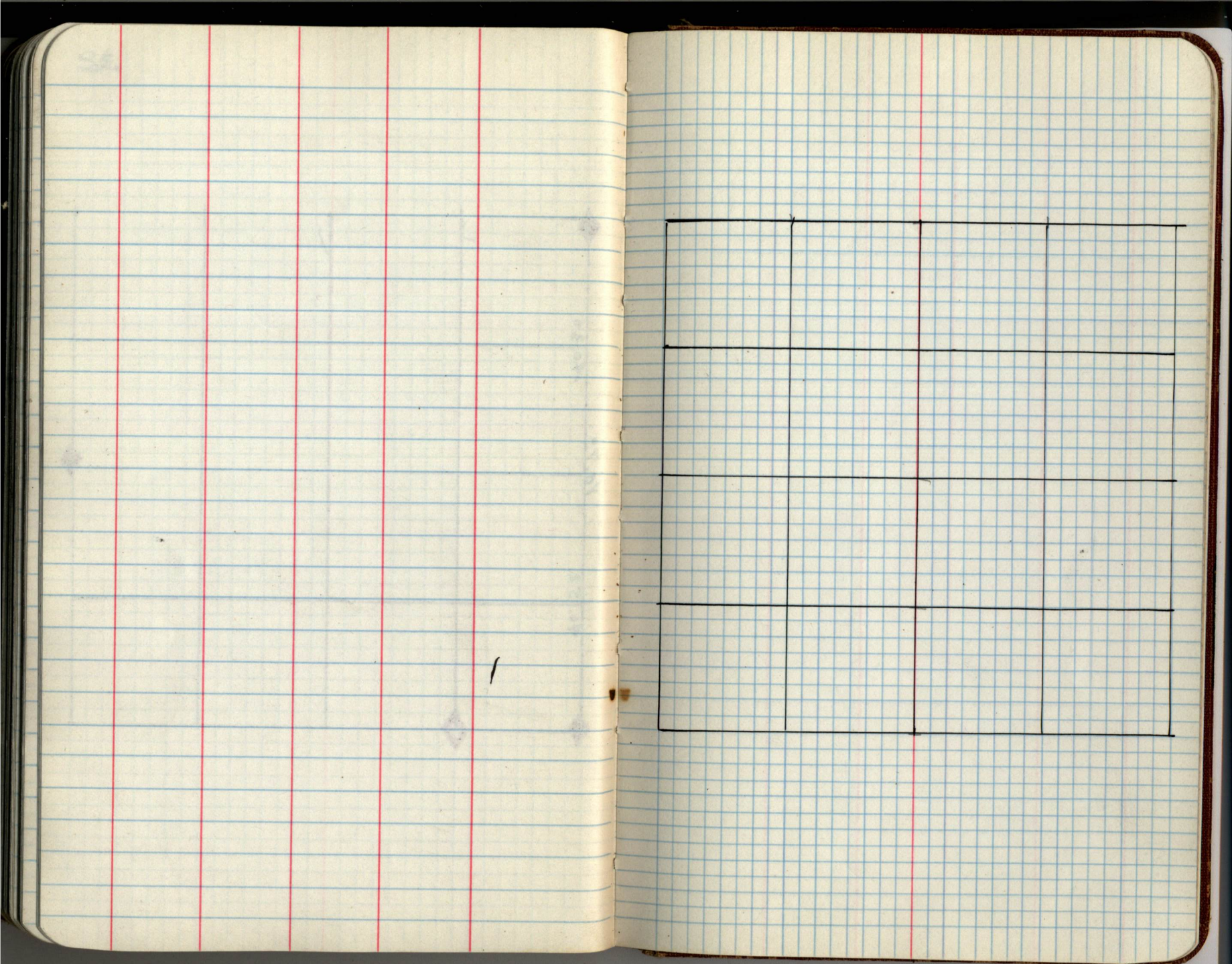
36


34

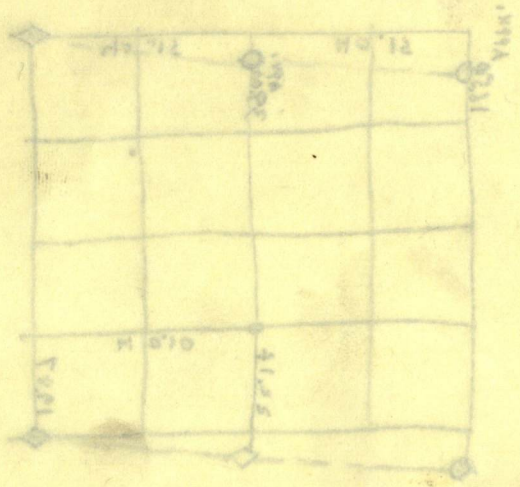
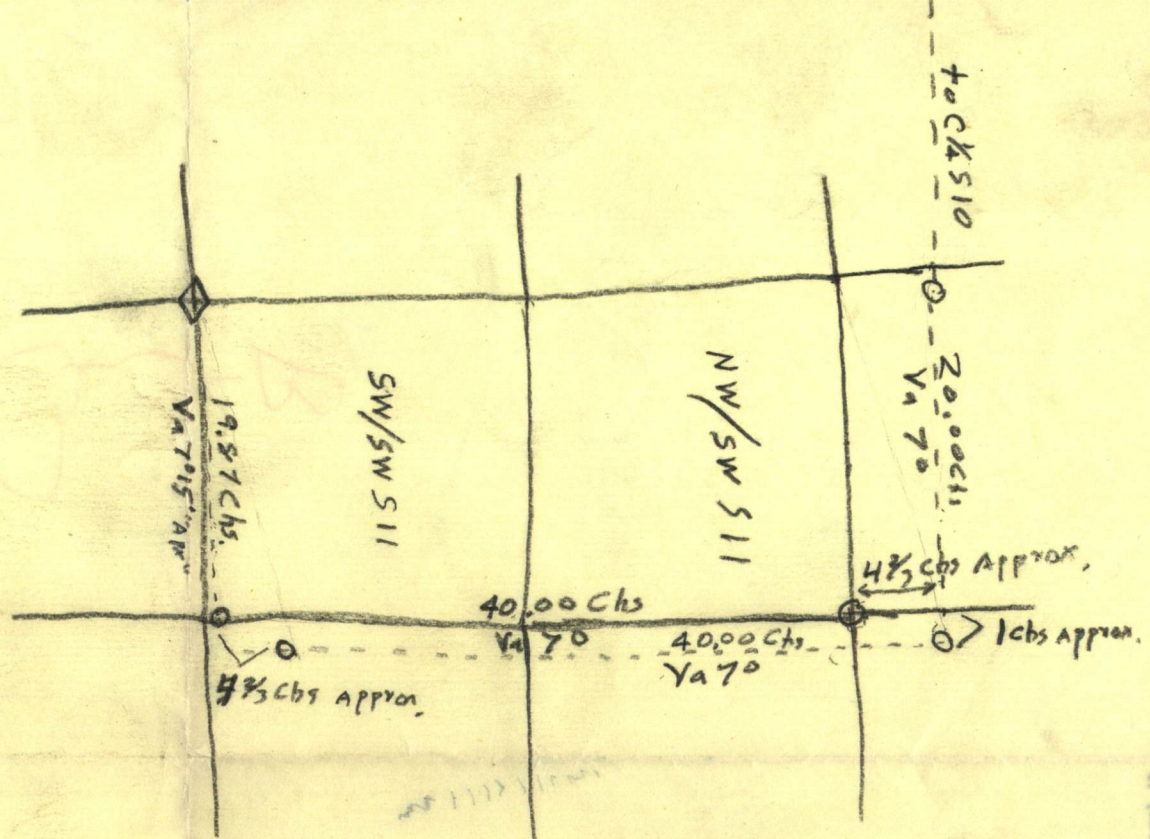
✓

36





T145N R27W



Probable shape of S11 ~ T145NR27W

