

T144N R30W

LINEAL SURVEY  
FIELD BOOK

ecc

15

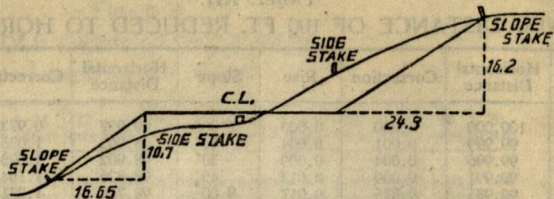
TABLES FOR EXCAVATIONS AND EMBANKMENTS.

DISTANCES FROM CENTER OF ROADWAY FOR CROSS-SECTIONING-  
ROADWAY 18 FEET WIDE. SIDE SLOPES 1 TO 1.  
FOR SINGLE TRACK EXCAVATION.

	0	.1	.2	.3	.4	.5	.6	.7	.8	.9	
0	9.0	9.1	9.2	9.3	9.4	9.5	9.6	9.7	9.8	9.9	0
1	10.0	10.1	10.2	10.3	10.4	10.5	10.6	10.7	10.8	10.9	1
2	11.0	11.1	11.2	11.3	11.4	11.5	11.6	11.7	11.8	11.9	2
3	12.0	12.1	12.2	12.3	12.4	12.5	12.6	12.7	12.8	12.9	3
4	13.0	13.1	13.2	13.3	13.4	13.5	13.6	13.7	13.8	13.9	4
5	14.0	14.1	14.2	14.3	14.4	14.5	14.6	14.7	14.8	14.9	5
6	15.0	15.1	15.2	15.3	15.4	15.5	15.6	15.7	15.8	15.9	6
7	16.0	16.1	16.2	16.3	16.4	16.5	16.6	16.7	16.8	16.9	7
8	17.0	17.1	17.2	17.3	17.4	17.5	17.6	17.7	17.8	17.9	8
9	18.0	18.1	18.2	18.3	18.4	18.5	18.6	18.7	18.8	18.9	9
10	19.0	19.1	19.2	19.3	19.4	19.5	19.6	19.7	19.8	19.9	10
11	20.0	20.1	20.2	20.3	20.4	20.5	20.6	20.7	20.8	20.9	11
12	21.0	21.1	21.2	21.3	21.4	21.5	21.6	21.7	21.8	21.9	12
13	22.0	22.1	22.2	22.3	22.4	22.5	22.6	22.7	22.8	22.9	13
14	23.0	23.1	23.2	23.3	23.4	23.5	23.6	23.7	23.8	23.9	14
15	24.0	24.1	24.2	24.3	24.4	24.5	24.6	24.7	24.8	24.9	15
16	25.0	25.1	25.2	25.3	25.4	25.5	25.6	25.7	25.8	25.9	16
17	26.0	26.1	26.2	26.3	26.4	26.5	26.6	26.7	26.8	26.9	17
18	27.0	27.1	27.2	27.3	27.4	27.5	27.6	27.7	27.8	27.9	18
19	28.0	28.1	28.2	28.3	28.4	28.5	28.6	28.7	28.8	28.9	19
20	29.0	29.1	29.2	29.3	29.4	29.5	29.6	29.7	29.8	29.9	20
21	30.0	30.1	30.2	30.3	30.4	30.5	30.6	30.7	30.8	30.9	21
22	31.0	31.1	31.2	31.3	31.4	31.5	31.6	31.7	31.8	31.9	22
23	32.0	32.1	32.2	32.3	32.4	32.5	32.6	32.7	32.8	32.9	23
24	33.0	33.1	33.2	33.3	33.4	33.5	33.6	33.7	33.8	33.9	24
25	34.0	34.1	34.2	34.3	34.4	34.5	34.6	34.7	34.8	34.9	25
26	35.0	35.1	35.2	35.3	35.4	35.5	35.6	35.7	35.8	35.9	26
27	36.0	36.1	36.2	36.3	36.4	36.5	36.6	36.7	36.8	36.9	27
28	37.0	37.1	37.2	37.3	37.4	37.5	37.6	37.7	37.8	37.9	28
29	38.0	38.1	38.2	38.3	38.4	38.5	38.6	38.7	38.8	38.9	29
30	39.0	39.1	39.2	39.3	39.4	39.5	39.6	39.7	39.8	39.9	30
31	40.0	40.1	40.2	40.3	40.4	40.5	40.6	40.7	40.8	40.9	31
32	41.0	41.1	41.2	41.3	41.4	41.5	41.6	41.7	41.8	41.9	32
33	42.0	42.1	42.2	42.3	42.4	42.5	42.6	42.7	42.8	42.9	33
34	43.0	43.1	43.2	43.3	43.4	43.5	43.6	43.7	43.8	43.9	34
35	44.0	44.1	44.2	44.3	44.4	44.5	44.6	44.7	44.8	44.9	35
36	45.0	45.1	45.2	45.3	45.4	45.5	45.6	45.7	45.8	45.9	36

Cedric DuBois

144-30  
Scanned  
July 16, 12  
Ronney



**DISTANCES FROM SIDE STAKES FOR CROSS-SECTIONING.**  
SLOPE 1 1/2 TO 1. ROADWAY OF ANY WIDTH.

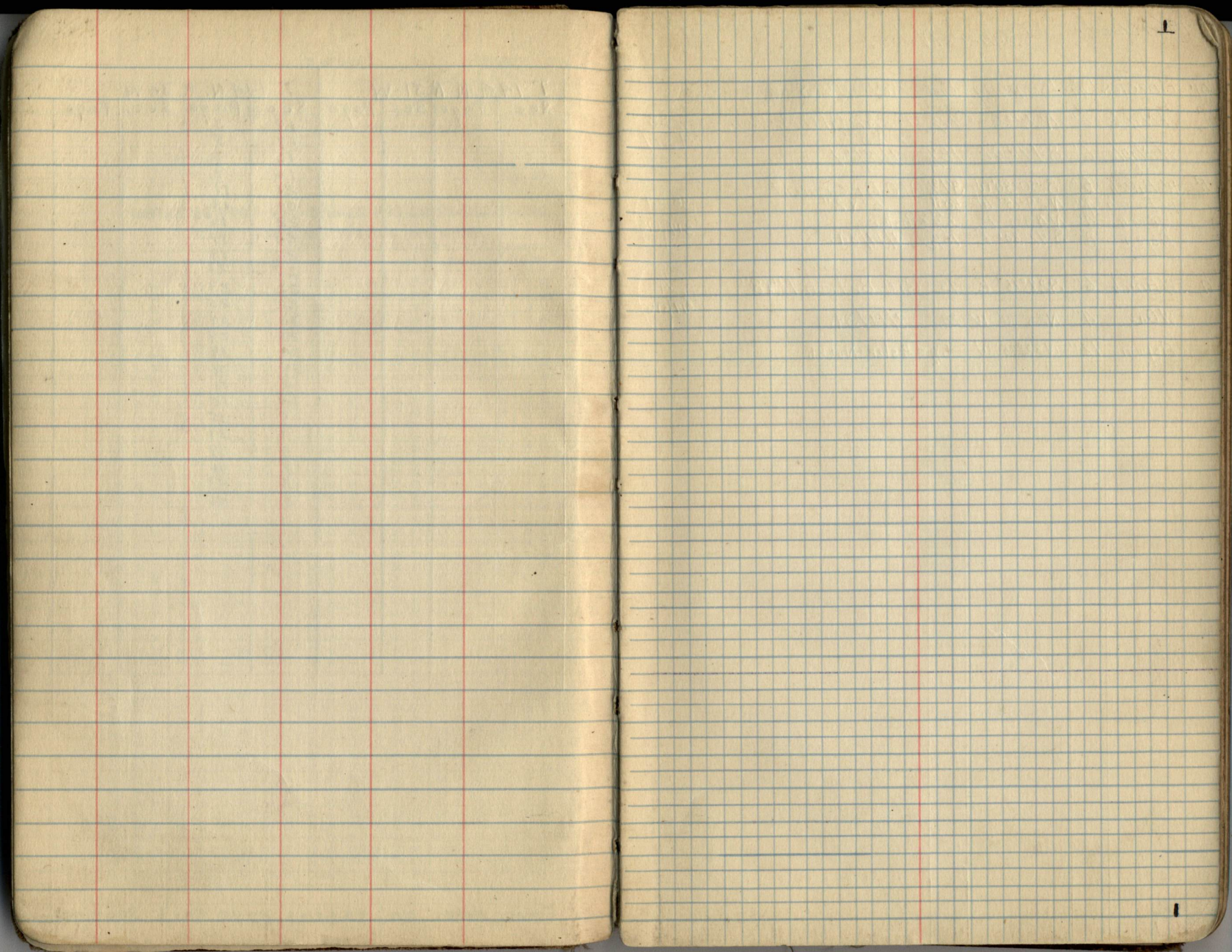
	0	.1	.2	.3	.4	.5	.6	.7	.8	.9
0	0.00	0.15	0.30	0.45	0.60	0.75	0.90	1.05	1.20	1.35
1	1.50	1.65	1.80	1.95	2.10	2.25	2.40	2.55	2.70	2.85
2	3.00	3.15	3.30	3.45	3.60	3.75	3.90	4.05	4.20	4.35
3	4.50	4.65	4.80	4.95	5.10	5.25	5.40	5.55	5.70	5.85
4	6.00	6.15	6.30	6.45	6.60	6.75	6.90	7.05	7.20	7.35
5	7.50	7.65	7.80	7.95	8.10	8.25	8.40	8.55	8.70	8.85
6	9.00	9.15	9.30	9.45	9.60	9.75	9.90	10.05	10.20	10.35
7	10.50	10.65	10.80	10.95	11.10	11.25	11.40	11.55	11.70	11.85
8	12.00	12.15	12.30	12.45	12.60	12.75	12.90	13.05	13.20	13.35
9	13.50	13.65	13.80	13.95	14.10	14.25	14.40	14.55	14.70	14.85
10	15.00	15.15	15.30	15.45	15.60	15.75	15.90	16.05	16.20	16.35
11	16.50	16.65	16.80	16.95	17.10	17.25	17.40	17.55	17.70	17.85
12	18.00	18.15	18.30	18.45	18.60	18.75	18.90	19.05	19.20	19.35
13	19.50	19.65	19.80	19.95	20.10	20.25	20.40	20.55	20.70	20.85
14	21.00	21.15	21.30	21.45	21.60	21.75	21.90	22.05	22.20	22.35
15	22.50	22.65	22.80	22.95	23.10	23.25	23.40	23.55	23.70	23.85
16	24.00	24.15	24.30	24.45	24.60	24.75	24.90	25.05	25.20	25.35
17	25.50	25.65	25.80	25.95	26.10	26.25	26.40	26.55	26.70	26.85
18	27.00	27.15	27.30	27.45	27.60	27.75	27.90	28.05	28.20	28.35
19	28.50	28.65	28.80	28.95	29.10	29.25	29.40	29.55	29.70	29.85
20	30.00	30.15	30.30	30.45	30.60	30.75	30.90	31.05	31.20	31.35
21	31.50	31.65	31.80	31.95	32.10	32.25	32.40	32.55	32.70	32.85
22	33.00	33.15	33.30	33.45	33.60	33.75	33.90	34.05	34.20	34.35
23	34.50	34.65	34.80	34.95	35.10	35.25	35.40	35.55	35.70	35.85
24	36.00	36.15	36.30	36.45	36.60	36.75	36.90	37.05	37.20	37.35
25	37.50	37.65	37.80	37.95	38.10	38.25	38.40	38.55	38.70	38.85
26	39.00	39.15	39.30	39.45	39.60	39.75	39.90	40.05	40.20	40.35
27	40.50	40.65	40.80	40.95	41.10	41.25	41.40	41.55	41.70	41.85
28	42.00	42.15	42.30	42.45	42.60	42.75	42.90	43.05	43.20	43.35
29	43.50	43.65	43.80	43.95	44.10	44.25	44.40	44.55	44.70	44.85
30	45.00	45.15	45.30	45.45	45.60	45.75	45.90	46.05	46.20	46.35
31	46.50	46.65	46.80	46.95	47.10	47.25	47.40	47.55	47.70	47.85
32	48.00	48.15	48.30	48.45	48.60	48.75	48.90	49.05	49.20	49.35
33	49.50	49.65	49.80	49.95	50.10	50.25	50.40	50.55	50.70	50.85
34	51.00	51.15	51.30	51.45	51.60	51.75	51.90	52.05	52.20	52.35
35	52.50	52.65	52.80	52.95	53.10	53.25	53.40	53.55	53.70	53.85
36	54.00	54.15	54.30	54.45	54.60	54.75	54.90	55.05	55.20	55.35
37	55.50	55.65	55.80	55.95	56.10	56.25	56.40	56.55	56.70	56.85
38	57.00	57.15	57.30	57.45	57.60	57.75	57.90	58.05	58.20	58.35
39	58.50	58.65	58.80	58.95	59.10	59.25	59.40	59.55	59.70	59.85
40	60.00	60.15	60.30	60.45	60.60	60.75	60.90	61.05	61.20	61.35
41	61.50	61.65	61.80	61.95	62.10	62.25	62.40	62.55	62.70	62.85
42	63.00	63.15	63.30	63.45	63.60	63.75	63.90	64.05	64.20	64.35
43	64.50	64.65	64.80	64.95	65.10	65.25	65.40	65.55	65.70	65.85
44	66.00	66.15	66.30	66.45	66.60	66.75	66.90	67.05	67.20	67.35
45	67.50	67.65	67.80	67.95	68.10	68.25	68.40	68.55	68.70	68.85
46	69.00	69.15	69.30	69.45	69.60	69.75	69.90	70.05	70.20	70.35
47	70.50	70.65	70.80	70.95	71.10	71.25	71.40	71.55	71.70	71.85
48	72.00	72.15	72.30	72.45	72.60	72.75	72.90	73.05	73.20	73.35
49	73.50	73.65	73.80	73.95	74.10	74.25	74.40	74.55	74.70	74.85
50	75.00	75.15	75.30	75.45	75.60	75.75	75.90	76.05	76.20	76.35

Index

T 144 N R 31 W		T. 144 N. R. 30 W.	
Sec.	Page	Sec.	Page
		17	3
		17	5
		16	7
		16	9
		21	11
		21	13
		28	15
		28	17
		27	19
		27	21
		22	23
		22	25
		23	27
		23	29
		39	19
		39	21
		19	31
		14	33
		9	35
		9	37
		8	39
		8	41
		3	43
		3	45
		2	47

Corner Notes on facing page each section.





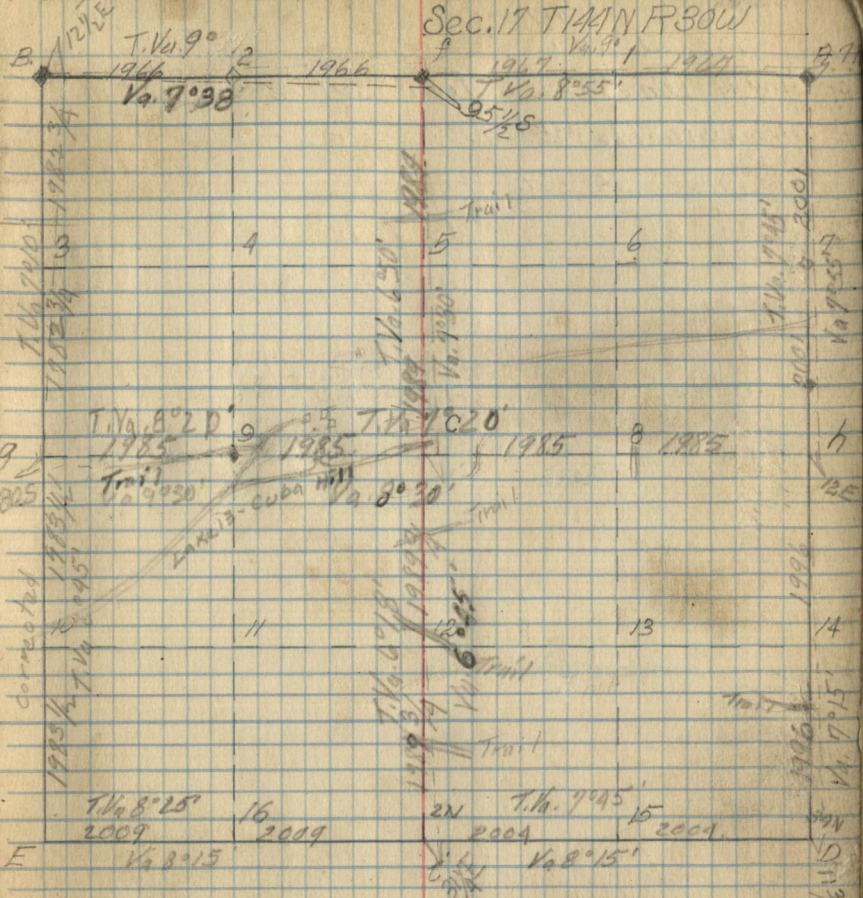
7<sup>th</sup> Var. Used.

Corner Notes.

Cor.	Species	Dia	Bearing	Dist	Remarks	
f	H. Maple	6"	N 19° E	1 1/2	Poster GLO Br. Iron.	1/38 4517
	H. Maple	6"	S 49° 30' E	18 1/4	1" X 8" 9/18/34	
H	W Birch	5"	S 50° 30' W	31 1/4	GLO Br. Cement	38 59
	W Birch	4"	N 23° 15' W	50 1/4	6" X 2"	517 516
	Aspen	4"	N 43° E	5 1/2	Poster	
	Aspen	8"	S 72° 30' E	18 1/2	9/19/34.	
h	W Birch	6"	S 29° 15' E	73	GLO Br. Iron 1" X 8"	1/4
	W Oak	4"	N 68° 30' W	29	9/19/34.	517 516
	Aspen	12"	N 32° 15' W	8 1/2	Poster Not B.T.	

Compassman, D.B. Rose.

Sec. 17 T14N R30W



Note

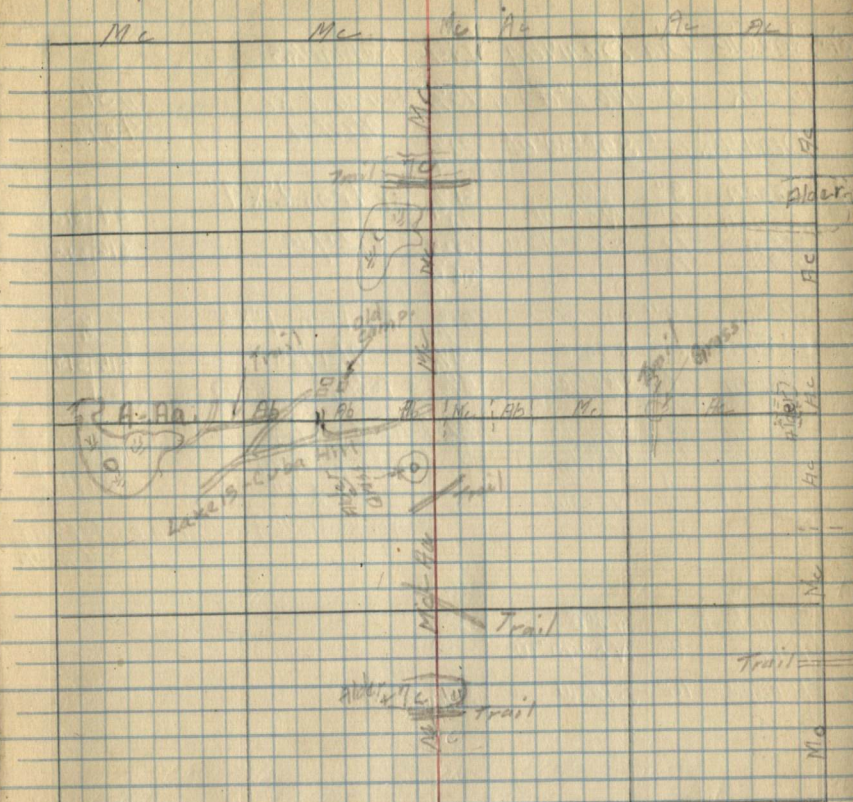
Bearings on East and West 1/4 line  
doubtful due to local attraction  
also strong deflection on South  
1/4 mile of East Line

Remarks.

Most of Section cut over, for more  
valuable wood.

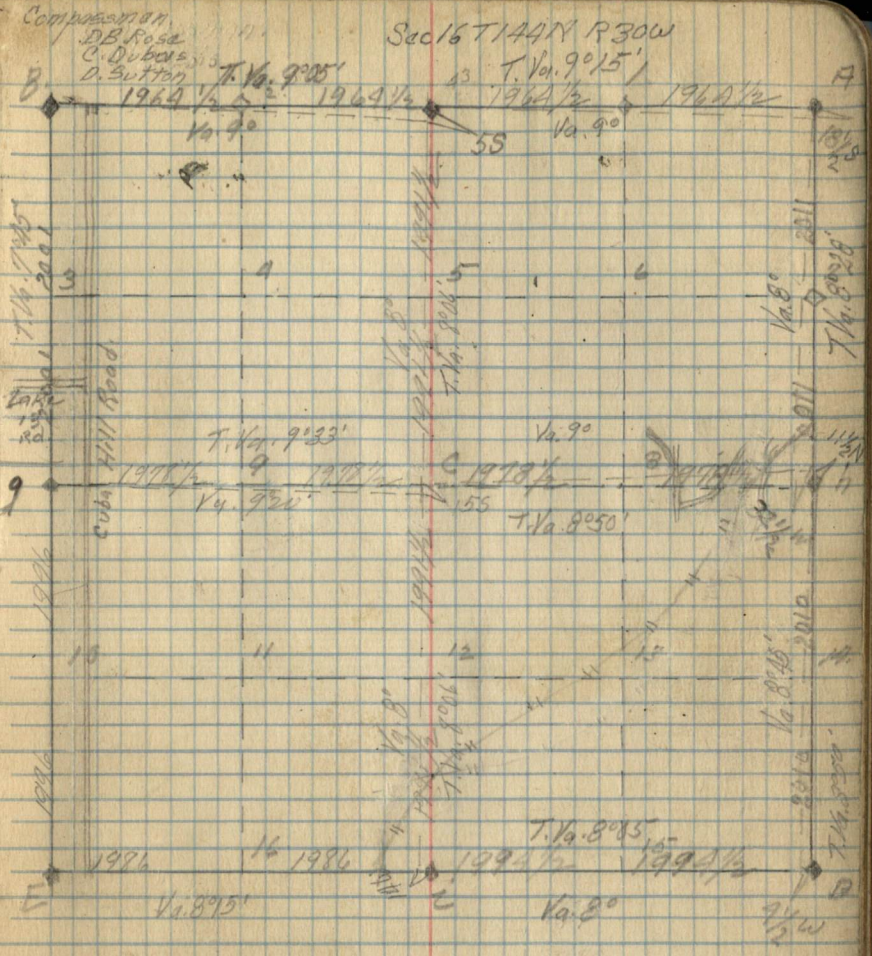
Type Map.

Sec 17 T144N R30W



7° Var. Used. Corner Notes.

Gr Specie	Dia	Bearing	US Dist	Remarks
f W Oak	8"	N69°45'W	15 1/2	Poster Br Iron. 1" X 2" ✓ 9/19/34. (59 / 1/4 S 1/2)
Dead Asp	6"	S57°30'E	20 1/2	
d Aspen	8"	N61°E	31 1/2	Br Iron 2" X 4" (59 / 510)
Aspen	6"	N35°W	10	9/20/34. (516 / 515)
Fir	13"	S52°45'W	13 1/2	
w Pine	15"	S45°30'E	20 1/2	Set Poster ✓
h W Oak	9"	S56°45'W	9 1/2	Br Iron. 1" X 5" (K / 516 / 515) ✓
w Pine	12"	S48°E	5 1/2	9/21/34. ✓
Aspen	6"	S86°W	5 1/2	← Poster
D Norway	18"	S42°45'E	32	Orig 8 1/2 Poster (516 / 515)
N Norway	16"	N81°E		GLO Br Iron ✓ (521 / 522)
N Norway	14"	S31°45'W		
N Norway	18"	N63°W		Rock around cor also part of orig poster
l Yellow Birch	8"	9/80E		✓
Elm	8"	N8°45'W		
H Maple	10"	S15°W	8 1/2	Poster

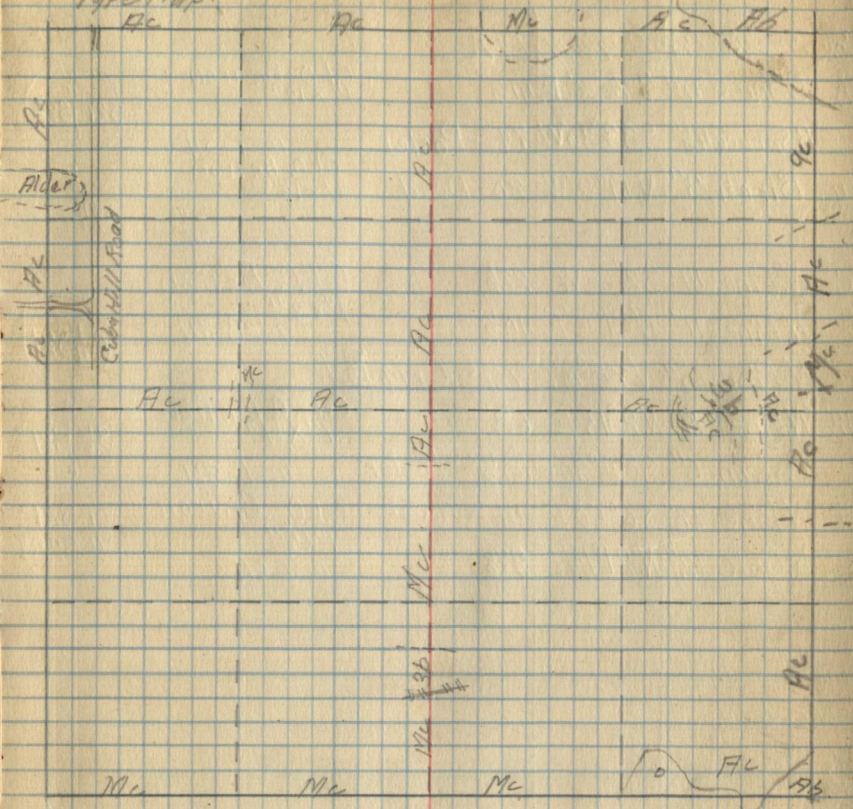




Remarks

Sec 16 T144N R30W

Type Map



70% Used.

## Corner Notes.

or	Species	Dia	Bearing	Dist.		
h	B. Spruce	4"	S. 74° 30' E	4 1/2	G.L.O. Br. iron 1" x 12"	(1/4) S21   S22
	B. Spruce	4 1/2"	S. 33° 30' W	79	10-1-34 G.L.O. Br. iron 1" x 12"	(5/16) S21   S22
14	Birch	3"	N. 51° 30' W	20	10-2-34 G.L.O. Br. iron 1" x 3"	(1/4) S21
C	N. Pine	14"	S 2° W	27 1/2	G.L.O. Br. iron 1" x 3"	(1/4) S21
	N. Pine	11"	N 81° 15' E	40 1/2	9-28-34	(1/4) S21
	N. Pine	15"	N 78° 15' E	3 1/2	Orig. B.T.	
12	N. Pine	19"	N. 2° 45' E	68	G.L.O. Br. iron 1" x 4"	(1/16) S21
	Balsam	6"	S 84° 30' E	18 1/2	10-1-34	(1/4) S21
i	N. Pine	17"	S 6° 50' E	14	G.L.O. Br. iron 1" x 5"	(1/4) S21
	R. Oak	12"	N. 21° 15' E	59 1/2	10-1-34	(1/4) S28

Compassman.

Sutton

2

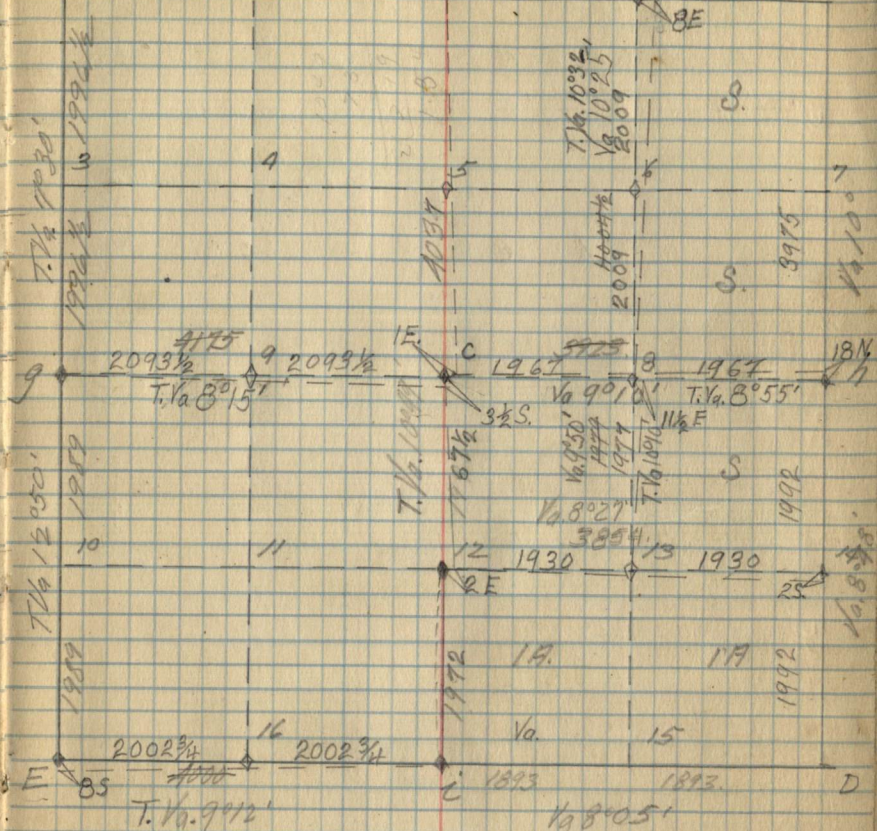
Sec 21 T144N R30W

1994 1/2

9981

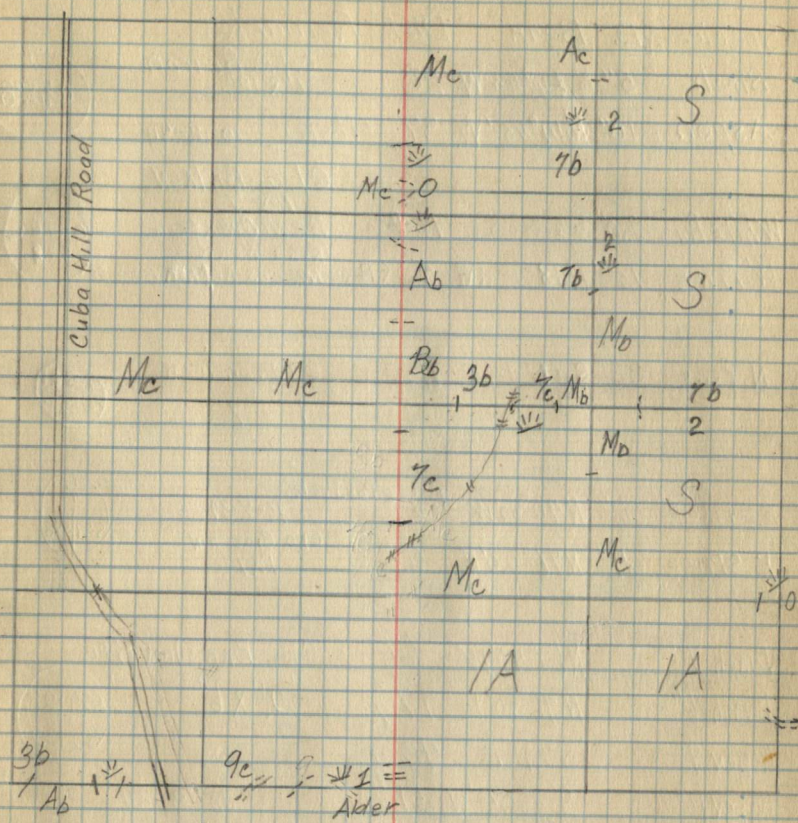
1994 1/2

A



Type Map

Sec 21 T144N R30W

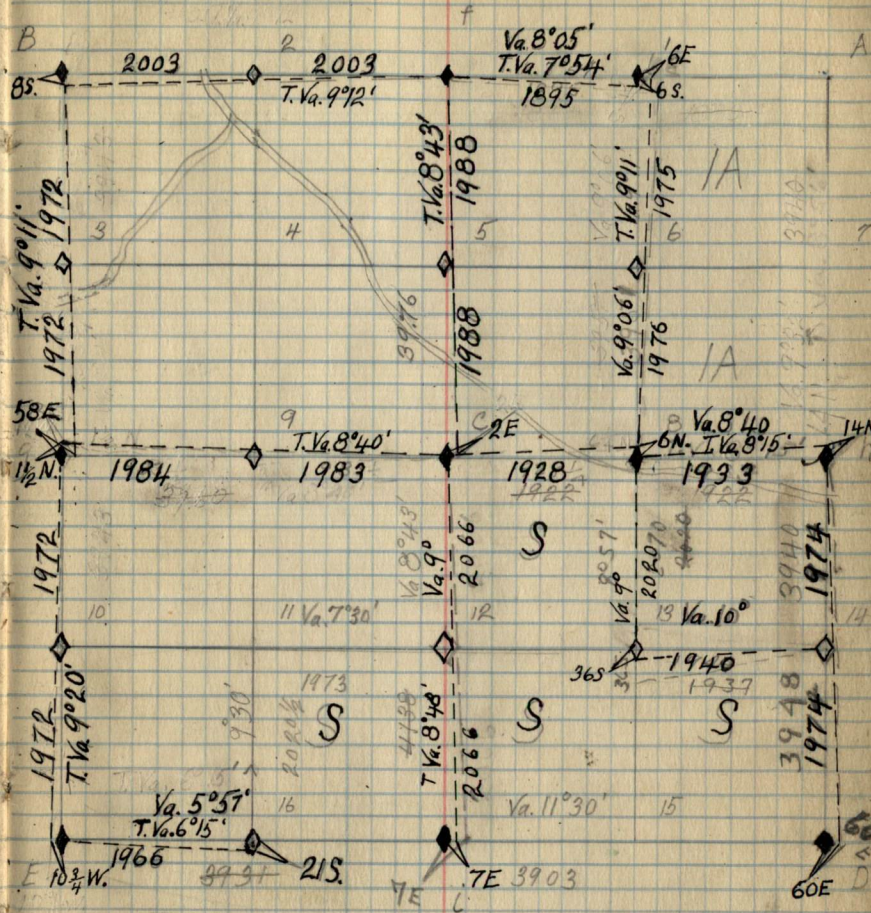


Va. 7<sup>o</sup> Corner Notes

Cor	Specie	D.	Bear.	Dist.	Remarks	
✓	Birch	5"	N 14° 45' E	28	G.L.O. BR IRON 1" X 12"	(C4528)
✓	Aspen	10"	S 14° 45' W	37	*Poster 10-2-34	
✓	White Pine	20"	S 60° 50' S E	104	G.L.O. BR IRON 1" X 7" BE N TO VERM ROAD WORK NEEDS REPAIR 10-3-34	(C516C S28)
✓	W. Pine	15"	N 13° 15' N E	53	*Poster	
✓	N. Pine	22"	S 11° 45' E	11 1/2	G.L.O. BR IRON 1" X 7"	(C521 C520)
✓	B. SPRUCE	6"	N 40° 30' W	13 1/2	*Poster 10-5-34	(C529 S28)
✓	B. SPRUCE	4"	N 76° 20' E	25	G.L.O. BRASS IRON 1" X 7"	
✓	Birch 7"		N 62° 40' W	65	G.L.O. BRASS IRON PIPE	
✓	Birch 6"		N 76° 30' E	17 3/4	2" X 6"	(S29128 S233)
✓	Aspen 9"		S 21° E	43 3/4		
✓	Aspen 10"		S 32° 50' W	51 1/2	10-8-34	
h	Birch 7"		S 34° W	67	G.L.O. BRASS IRON PIPE 2" X 6"	(S281 S29)
h	"		6" S 19° 20' E	43		
i	Cedar	6"	S 88° 30' W	17	*Poster	(C528 S33)
i	Cedar	7"	N 33° 15' W	21 3/4		
ii	Tam.	6"	N 46° 15' E	21	G.L.O. BR. IR. PIPE 2" X 6"	(S27 29 S33 34)
14	"	4"	S 6° E	16	Dead	

DuBois  
Sutton

Sec. 28 T.144N. R.30W.



Scattered spruce poles in S.E. 1/4

Scattered w.P. and trees in S.W. 1/4  
Balsam seedling under story along line  
at 3 N.E. 1/4

Balsam sapling under Mc in NESE 1/4  
in S.E.

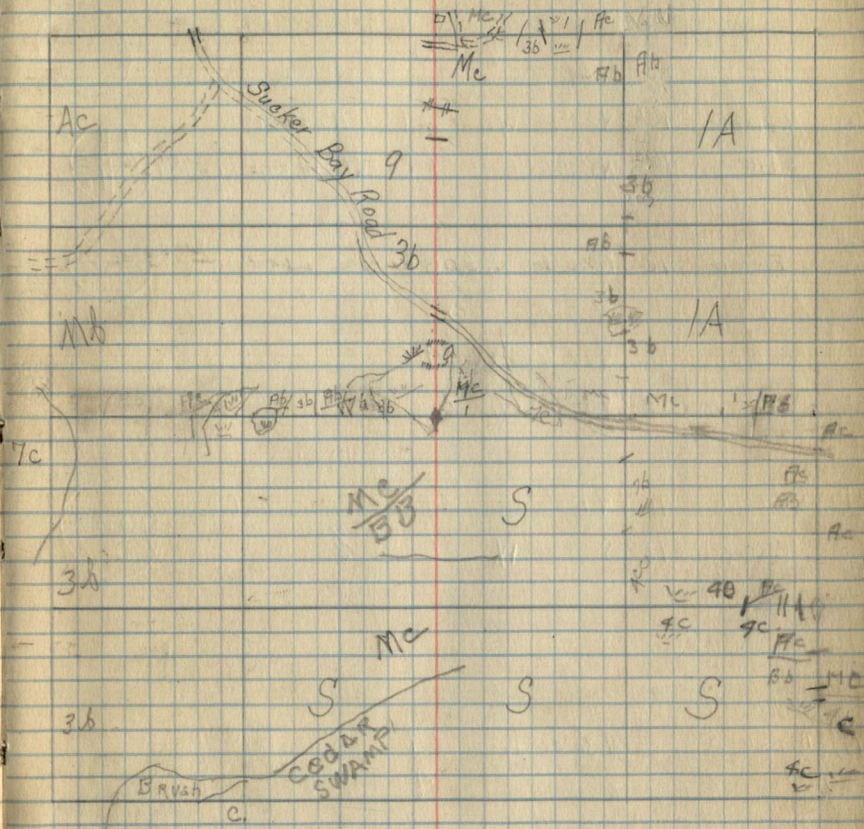
Balsam sapling with cedar from 13 to 14

19 75 1/2  
13951  
Complete E. line  
Set corner  
Run 1/2 center of S.E. 1/4

D. Tam 4" N. 32° E 19  
" 4" S 73° 30' E 18 Dead

Type Map

Sec. 28 T. 144 N. R. 30 W.



Corner notes

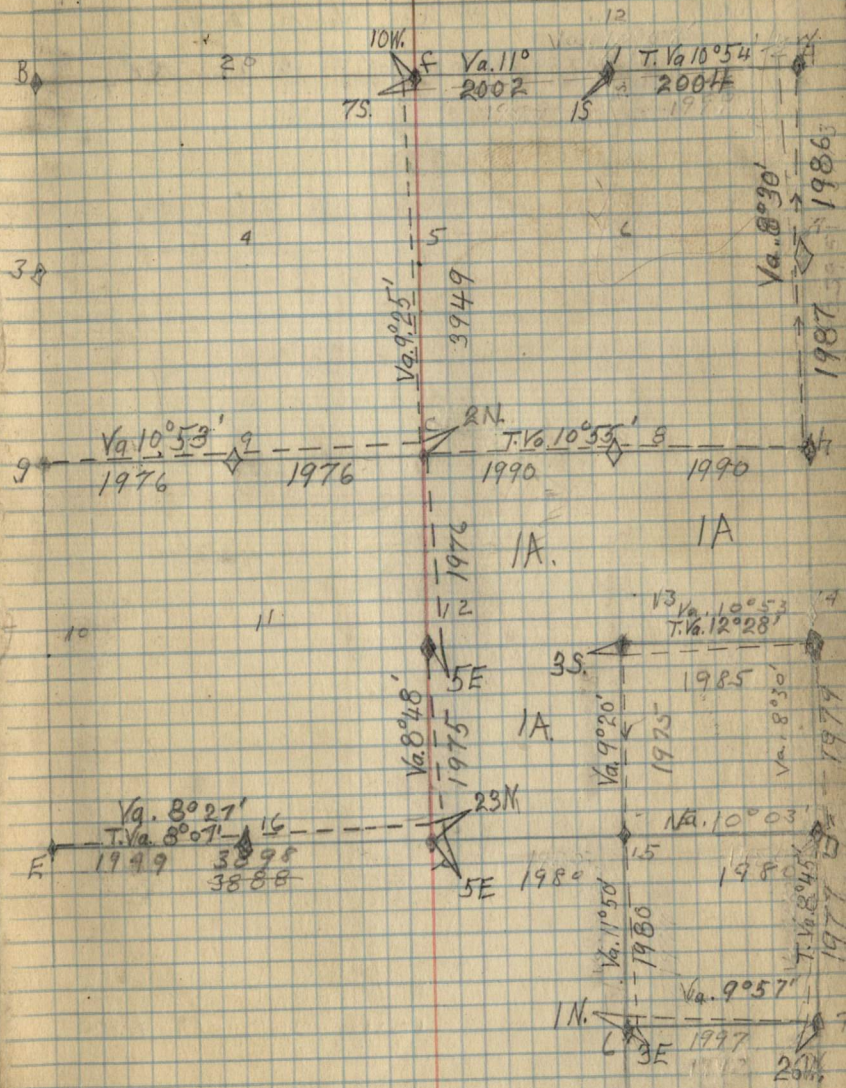
or. Species	Di.	Bears Dist.	Remarks
Cedar	8"	N. 7° 10'	1.7 G.L.O. Br. I. Pipe $\frac{1}{4} \frac{527}{34}$
"	12"	S 61° 45'	16 1/2 1" x 6" $\frac{1}{4} \frac{34}{1}$
H. Maple	13"	S 27° 15' W.	24 Poster $\frac{1}{16} \frac{527}{1}$
E. Elm	16"	N. 63° 30' E	64 G.L.O. Br. cop. pipe 1/8" $\frac{30}{20} \frac{30}{20}$
Tam.	10"	N 26° 30' W.	203 G.L.O. Br. I. Pipe 2" x 14" $\frac{20}{20} \frac{20}{20}$
"	8"	N. 8° E.	89
W. Pine	18"	S 17° 45' E	34
Cedar	14"	S 30° 30' W.	71
W. Oak	10"	N 1° 50' E	35 G.L.O. Br. I. Pipe $\frac{1}{5} \frac{522}{27}$
W. Oak	18"	S 51° 20' W.	36 1/2" x 8" $\frac{1}{6} \frac{527}{1}$
Birch	5"	N. 30° 25' W.	24 G.L.O. Br. Cement
"	6"	N 48° 30' E	4 1" x 8" $\frac{27}{36} \frac{36}{35}$
Tam.	8"	S 16° 45' E	38 Poster 10-15 $\frac{34}{35}$
Balsam		S 15° W.	35 ← Dawn

Sec. 34

Cedar	18"	N 52° 40' W.	11 G.L.O. Br. I. Pipe $\frac{1}{76} \frac{39}{35}$
Ash	15"	N. 29° 20' E.	6.2 1 1/2" x 6"
Cedar	6"	N. 54° E.	11 3/4 Poster
Cedar	5"	S 27° W.	2 1/2 G.L.O. Brass pipe 1 3/8" $\frac{1}{16} \frac{34}{1}$

18

Compass map - Sandberg Sec. 27 T. 144 N. R. 30 W.



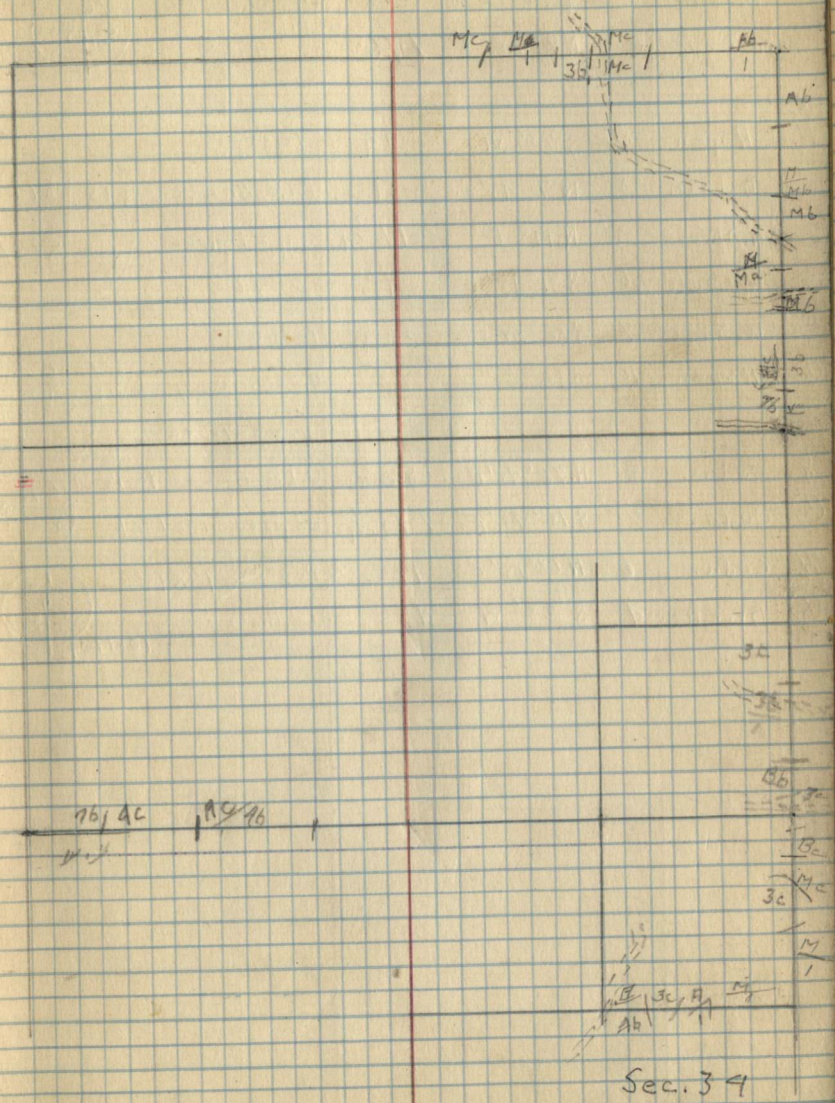
Sec 34

Remarks

Bellam understory (5' high) on E line of N.E. 1/4  
" " " " 10' " " " SE 1/4

Type Map

S. 27 T. 144 N. R. 30 W.



Corner Notes

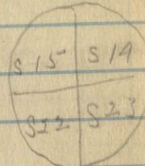
Cor. Species Dist Bearing Dist. Remarks

10 Birch 4' N. 56° 40' W 20 G.L.O. Br capped  
W. Pine 22' N 9° 45' E 146 Pipe 1" x 6"



⑤ H. Aspen 9" S 73° W. 44 Poster

Balsam 8" N 70° 45' W. 51 1/2 G.L.O. Brass

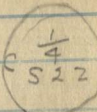


W. Spruce 5" N. 19° E 17 3/4 capped pipe

W. Spruce 6" S 31° 45' E 31 1/2 2" x 6"

C W. Spruce 7" S 16° W 32 1/4 Poster

② Aspen 10" S 36° E 43 G.L.O. Br capped  
pipe 1" x 6"



8 Cedar 8" N. 78° 45' E 80 1/2 G.L.O. Brass 10-18-31



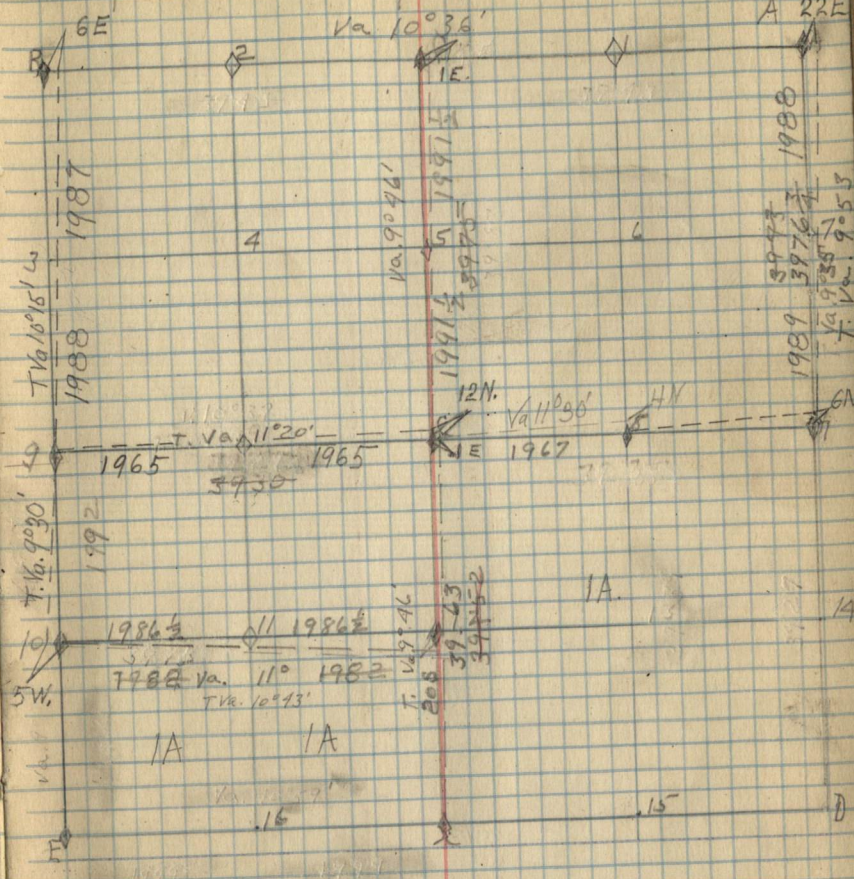
④ Cedar 7" S. 15° 45' E 143 3/4 capped pipe 1" x 10"

H Cedar 6" N. 63° 15' E 49 1/2 Poster 1" x 15"



① Birch 4" S 23° W 15 G.L.O. Brass c. pipe 10-14-39

Compassman - Sandberg S. 22 T. 144 N. R. Jaw





Remarks

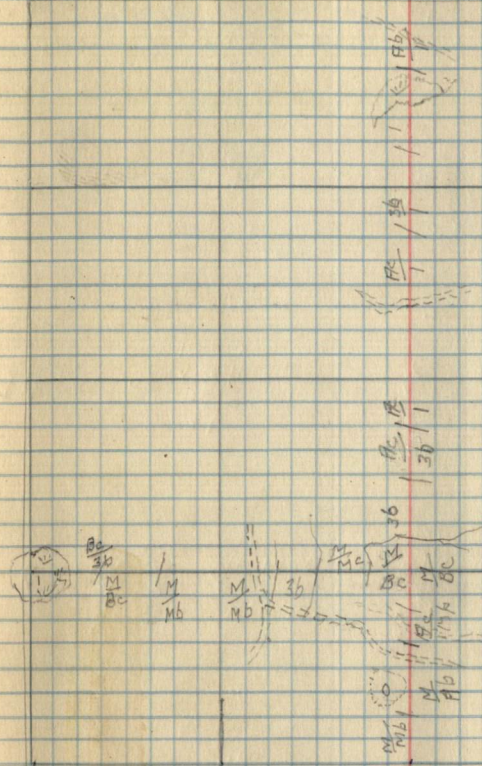
Type Map.

Sec. 22 T. 144 N. R. 30 W.

1002  
3983

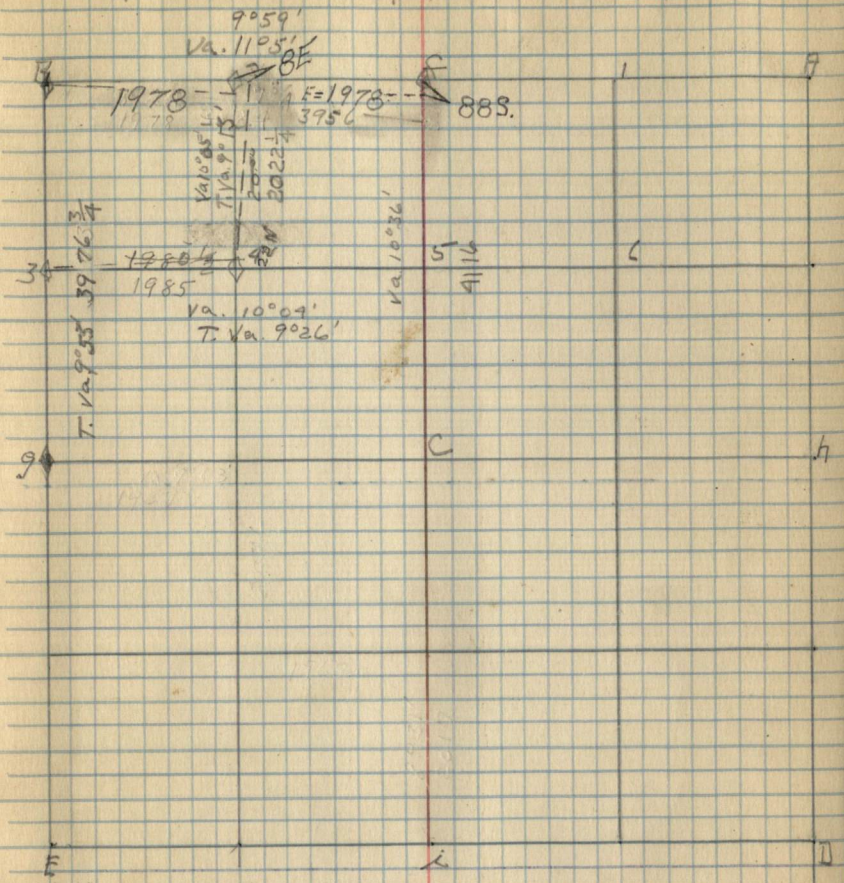
3730  
30  
21

2/3/77



Cor. Species □. Bearing Distance Remarks

Compassman Sandberg S. 23 T. 144 N. R. 30w.

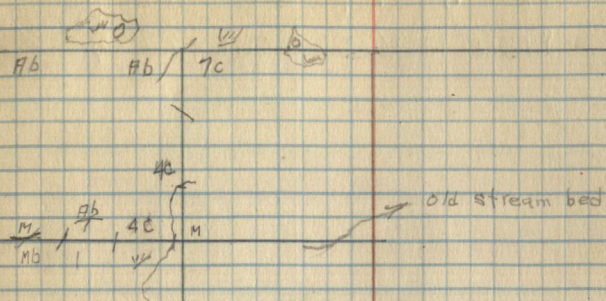


981  
253960

Remarks

Type map

S. 23 T. 144N. R. 30W

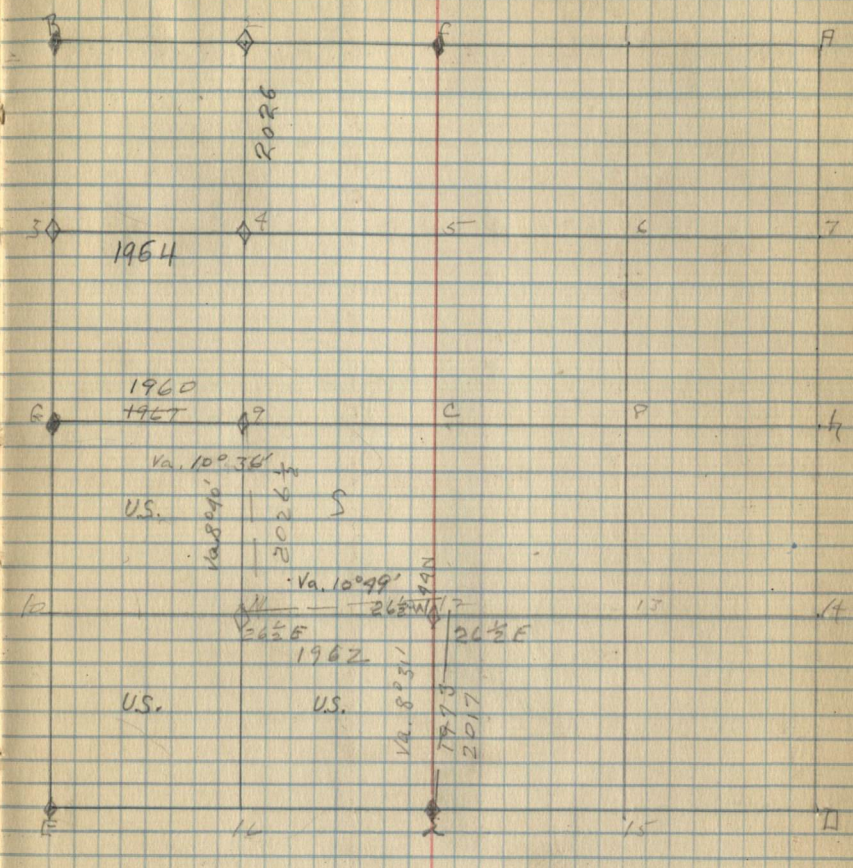


Corner Notes

Cor	Species	Di.	Bearing	Distance	Remarks
2	W. Spruce	15"	N 92° 30' W	21 $\frac{1}{4}$	6, h.D. Brass in Post
	E/m	12"	S. 43° 15' W	31 $\frac{1}{2}$	Cement post 2" dia.

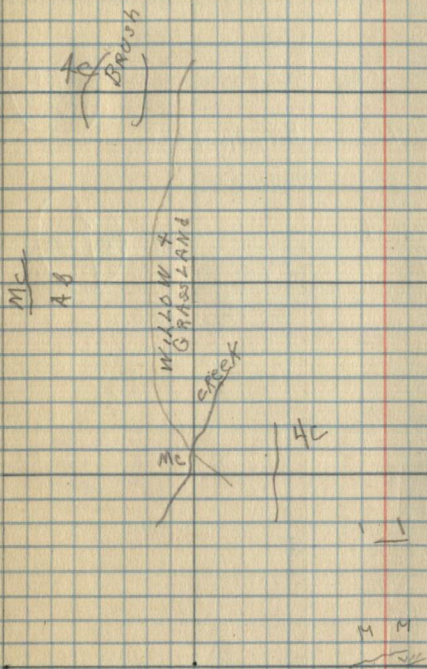
LS 14  
AS 23

Sec. 14 T-144 N.R. Iowa



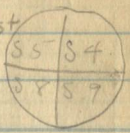
Type map

Sec. 19 T194N R. 30W

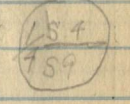


Cor. Species D. Bearing Dist. Remarks

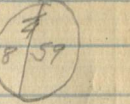
B Ash 16" 80°30' poster  
 Basswood 22" N 78°40' W 12' 2" Alignment post  
 Cedar 7" 300° E 59' 8" 6" x 3"  
 Y. Birch 7" 60°15' 79 1/2'  
 Ash 14" 62°15' W 20 1/2'  
 Basswood 20" S 54° W



f. Elm 6" N 90°15' W 53 3/4' Poster 2" x 5"  
 Basswood 19" S 11°45' W 42 1/2' Br. Cap. pipe

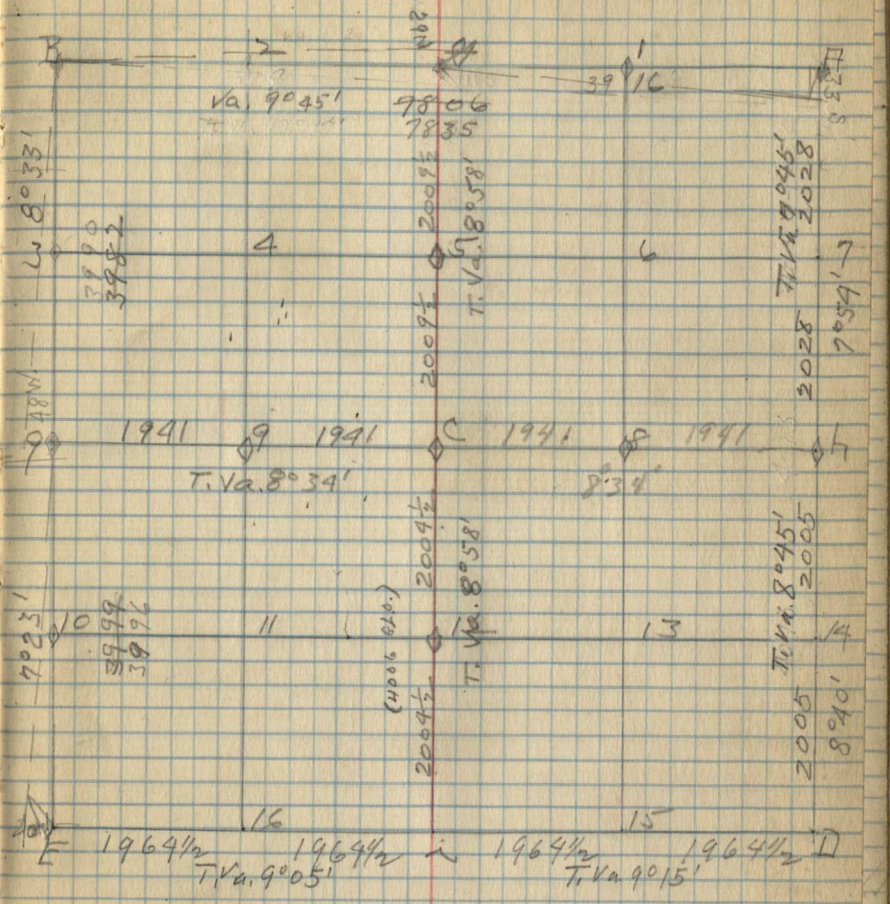


g W. Pine 39" N 61°20' E 7 1/2' Poster  
 Asper 8" S 38°15' W 24' 2" x 6"



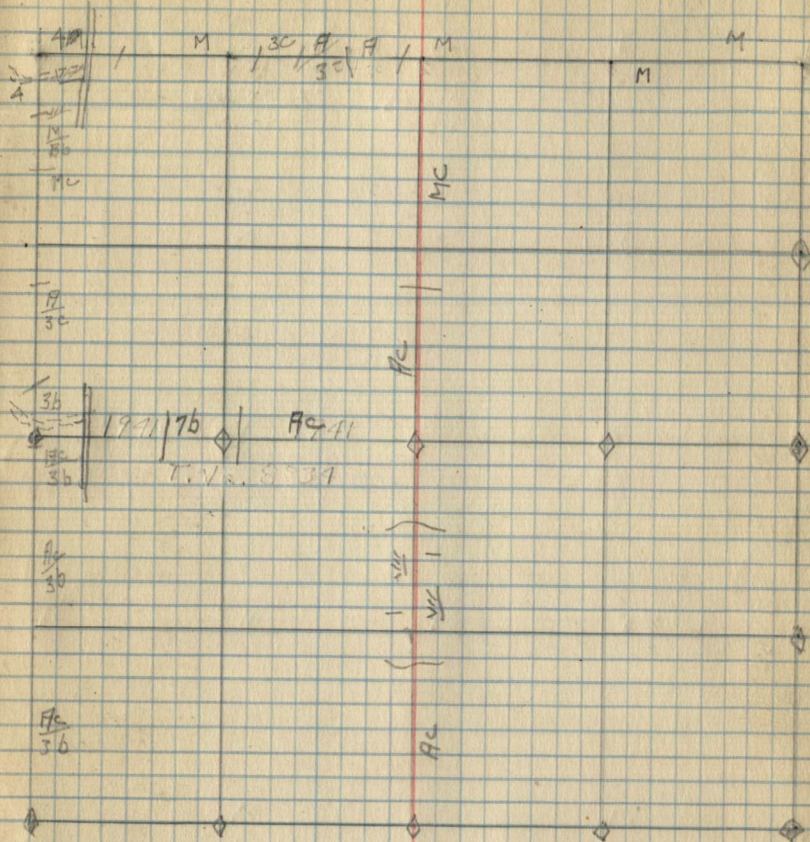
998  
 3996

Compassman - Sandberg Sec. 9 T. 144 N. R. 30 W



Type Map

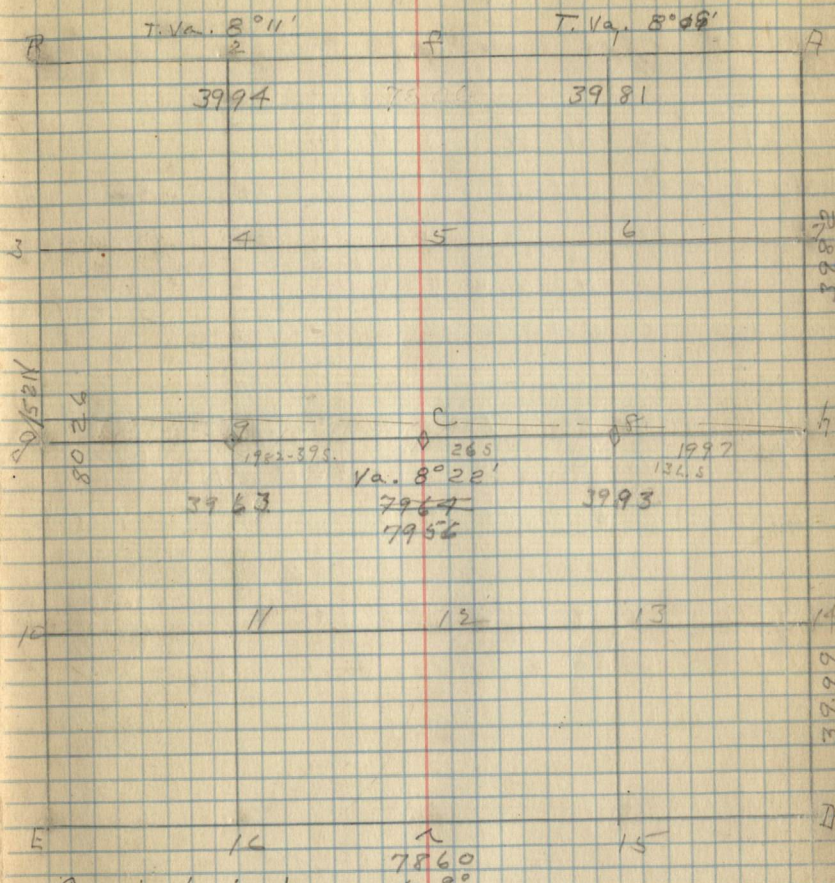
S. 9 T. 144 N. R. 30 W



Corner Notes

Cor Species T. Bearing Distance Remarks

Compassman Sandberg Sec. 8, T. 144 N. R. 30 W.



Copied into  
another field book.

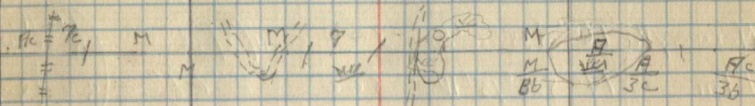
1992  
3963

1997  
3993



Type Map

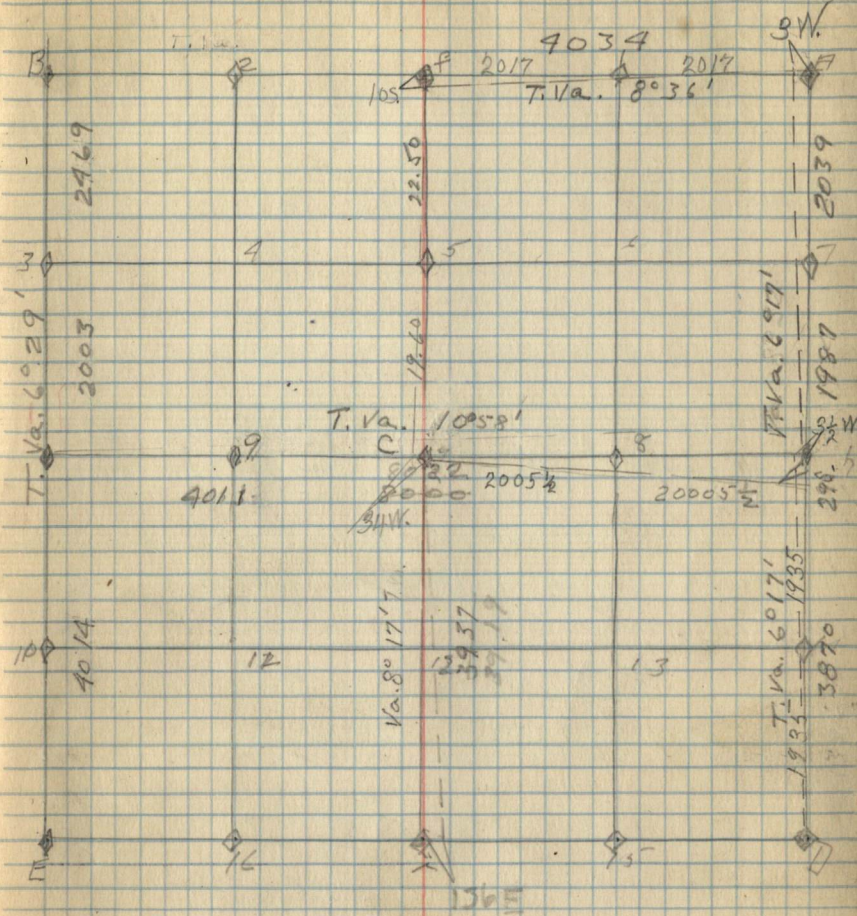
Sec. 8 T.144N R.30W



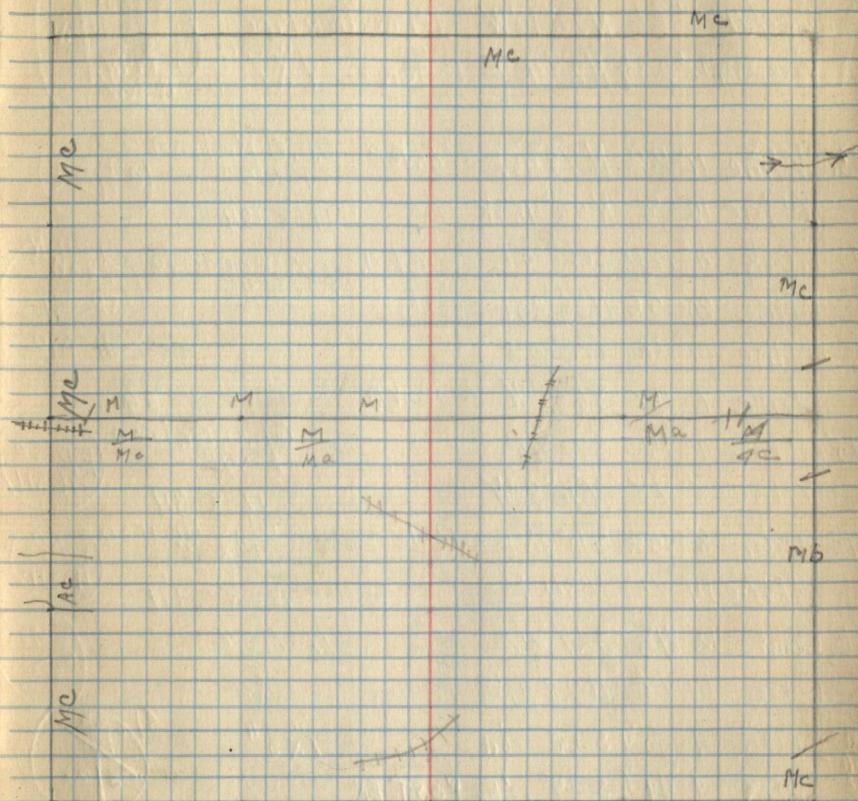
Corner Notes

Cor.	Species	D.	Bearing	Distance	Remarks
M.	BIRCH	8"	S61°45'W	68 1/4	POSTER 2"X9" (S3/S4) 1/4
	BIRCH	14"	N54°25'E	89	
B.	ELM	4"	S40°W	30 1/4	(S.34/S.41)
	WSPROCE	5"	S29°41'E	34 1/2	POSTER 2"X5" (S3/S4)
A.	cedar	8"	N.68°40'W	44 1/4	Poster G.L.O. 1"X7" (S3/S2) 1/4
	cedar	6"	N.61°35'E	75 1/2	11/1/34
A.	Norway P.	16"	S35°30'E	300	11/2/34 (145°N R 30°W) (S3/S2) (194°N R 30°W)
	Elm	14"	S23°15'W	300	2"X7"
	W.Pine	30"	N.53°25'E	10	Poster
F.	W.Pine	14"	S40°30'W	89	2"X6" Poster (145°N R 30°W) (11-1-34) (S3/S4) (194-34)
	Elm	9"	S22°45'E	144 1/2	11-2-34

Sec. 3, T. 144 N. R. 30 W.



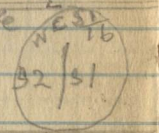
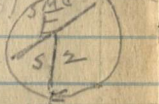
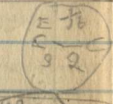
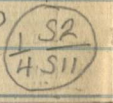
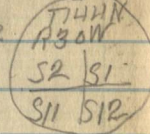
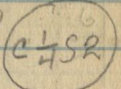
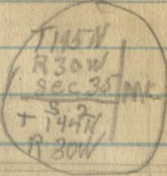
Type Map S3



Corner Notes

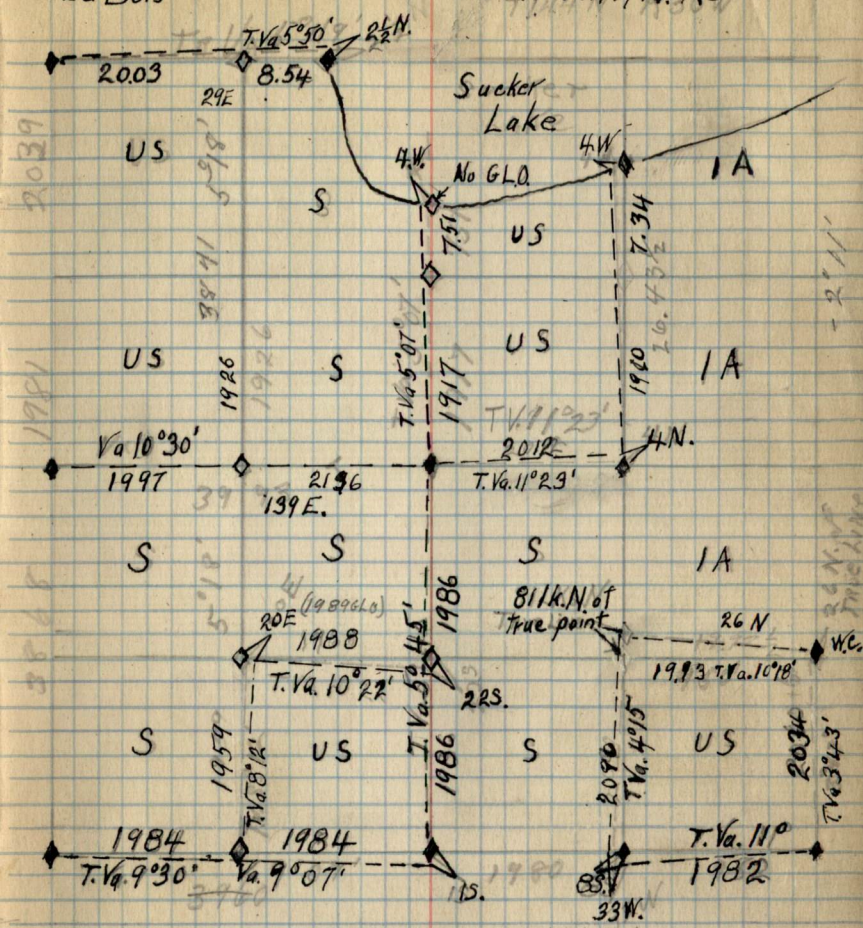
Va. 7°

Cor	Species	D	Dist	Bearing	Remarks
Mc	Cedar	5"	47 1/2	N 66° 30' W	11-3-34
W. f	Cedar	4"	66	N 22° 10' W	BRASS IRON PIPE
f	Aspen	12"	23 1/2	N 20° 45' E	Poster 1' x 7"
	C. W. Pine	11"	22	N 73° 45' E	GL.O Br iron 1" x 12" 11-8-34
	W. Pine	12"	8	N 22° 45' W	11-8-34
	D W. Oak	4"	17 1/4	S 66° 30' E	GL.O. Br. concrete 5" x 5"
	N. Pine	20"	56	N 36° 30' E	Poster
	J. Pine	14"	97	N 70° 30' W	
	Maple	7"	137	S 65° W	Down 11-8-34
	15 N. Pine	9"	12	S 72° 45'	GL.O. Br. iron 1" x 9" 11-8-34
	W. Pine	8"	98	N 7° 30' W	11-8-34
	E Cedar	8"	52	S 10° 30' E	Poster 1" x 3" 11-8-34
	W. Pine	14"	75	N. 34 E	
	6 Cedar	12"	45	S 24° 30' E	11-9-34
	Cedar	10"	16	N 28° 20' E	Poster 1' x 5"
	Mc CEDAR	9"	50 1/4	S 62° 20' W	1' x 3" 11-9-34
	5 CEDAR	7"	49 1/2	S 54° 10' E	Poster 1' x 3" 11-9-34
					BRASS IRON PIPE 1' x 8" 11-13-34



Du Bois

Sec. 2 T144N. R30W

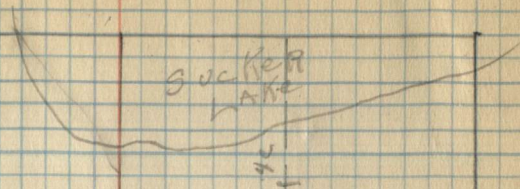


#11 1/16 stake is set 201k to far east.  
 The line from #2 to #9 was not corrected  
 The line # 14 to #13 was started from the W.C. instead of from the true corner.

Mc Mc

Ab | Hc ~~Creek Bed~~

~~Creek~~ Bed | Hc



bc

Ab

Ab

H

Ab

Ab

Hc

Hc

Hc

Hc

Hc

Hc

Ab

Hc

Hc

Hc

Hc

5c

~~Sucker Creek~~

Pages 50 - End  
are Blank