

#114

B

MINI
FRONT
NO. 114

ccc 14

T. 144 N. R. 29 W.

EUGENE DIETZGEN CO.

DRAWING MATERIALS, MATHEMATICAL and
SURVEYING INSTRUMENTS

Chicago New York San Francisco New Orleans Pittsburg Toronto

Distances from Center of Roadway for Cross-Sectioning
Roadway 16 feet wide. Side Slopes 1 on 1.
For Single Track Embankment.

H	0	.1	.2	.3	.4	.5	.6	.7	.8	.9	H
0	8.0	8.1	8.2	8.3	8.4	8.5	8.6	8.7	8.8	8.9	0
1	9.0	9.1	9.2	9.3	9.4	9.5	9.6	9.7	9.8	9.9	1
2	10.0	10.1	10.2	10.3	10.4	10.5	10.6	10.7	10.8	10.9	2
3	11.0	11.1	11.2	11.3	11.4	11.5	11.6	11.7	11.8	11.9	3
4	12.0	12.1	12.2	12.3	12.4	12.5	12.6	12.7	12.8	12.9	4
5	13.0	13.1	13.2	13.3	13.4	13.5	13.6	13.7	13.8	13.9	5
6	14.0	14.1	14.2	14.3	14.4	14.5	14.6	14.7	14.8	14.9	6
7	15.0	15.1	15.2	15.3	15.4	15.5	15.6	15.7	15.8	15.9	7
8	16.0	16.1	16.2	16.3	16.4	16.5	16.6	16.7	16.8	16.9	8
9	17.0	17.1	17.2	17.3	17.4	17.5	17.6	17.7	17.8	17.9	9
10	18.0	18.1	18.2	18.3	18.4	18.5	18.6	18.7	18.8	18.9	10
11	19.0	19.1	19.2	19.3	19.4	19.5	19.6	19.7	19.8	19.9	11
12	20.0	20.1	20.2	20.3	20.4	20.5	20.6	20.7	20.8	20.9	12
13	21.0	21.1	21.2	21.3	21.4	21.5	21.6	21.7	21.8	21.9	13
14	22.0	22.1	22.2	22.3	22.4	22.5	22.6	22.7	22.8	22.9	14
15	23.0	23.1	23.2	23.3	23.4	23.5	23.6	23.7	23.8	23.9	15
16	24.0	24.1	24.2	24.3	24.4	24.5	24.6	24.7	24.8	24.9	16
17	25.0	25.1	25.2	25.3	25.4	25.5	25.6	25.7	25.8	25.9	17
18	26.0	26.1	26.2	26.3	26.4	26.5	26.6	26.7	26.8	26.9	18
19	27.0	27.1	27.2	27.3	27.4	27.5	27.6	27.7	27.8	27.9	19
20	28.0	28.1	28.2	28.3	28.4	28.5	28.6	28.7	28.8	28.9	20
21	29.0	29.1	29.2	29.3	29.4	29.5	29.6	29.7	29.8	29.9	21
22	30.0	30.1	30.2	30.3	30.4	30.5	30.6	30.7	30.8	30.9	22
23	31.0	31.1	31.2	31.3	31.4	31.5	31.6	31.7	31.8	31.9	23
24	32.0	32.1	32.2	32.3	32.4	32.5	32.6	32.7	32.8	32.9	24
25	33.0	33.1	33.2	33.3	33.4	33.5	33.6	33.7	33.8	33.9	25
26	34.0	34.1	34.2	34.3	34.4	34.5	34.6	34.7	34.8	34.9	26
27	35.0	35.1	35.2	35.3	35.4	35.5	35.6	35.7	35.8	35.9	27
28	36.0	36.1	36.2	36.3	36.4	36.5	36.6	36.7	36.8	36.9	28
29	37.0	37.1	37.2	37.3	37.4	37.5	37.6	37.7	37.8	37.9	29
30	38.0	38.1	38.2	38.3	38.4	38.5	38.6	38.7	38.8	38.9	30
31	39.0	39.1	39.2	39.3	39.4	39.5	39.6	39.7	39.8	39.9	31
32	40.0	40.1	40.2	40.3	40.4	40.5	40.6	40.7	40.8	40.9	32
33	41.0	41.1	41.2	41.3	41.4	41.5	41.6	41.7	41.8	41.9	33
34	42.0	42.1	42.2	42.3	42.4	42.5	42.6	42.7	42.8	42.9	34
35	43.0	43.1	43.2	43.3	43.4	43.5	43.6	43.7	43.8	43.9	35
36	44.0	44.1	44.2	44.3	44.4	44.5	44.6	44.7	44.8	44.9	36
37	45.0	45.1	45.2	45.3	45.4	45.5	45.6	45.7	45.8	45.9	37
38	46.0	46.1	46.2	46.3	46.4	46.5	46.6	46.7	46.8	46.9	38
39	47.0	47.1	47.2	47.3	47.4	47.5	47.6	47.7	47.8	47.9	39
40	48.0	48.1	48.2	48.3	48.4	48.5	48.6	48.7	48.8	48.9	40

Example—If point is 22.6 ft. above grade, how far should it be from center line to be a slope stake point? Ans. from Table 30.6. For same slopes but other widths of roadbed, correct above figures by one-half difference in width of roadbed; thus in example above, for 20 ft. roadbed distance will be $30.6 + (20 - 16) \div 2$ or 2 ft. added to $30.6 = 32.6$. For slopes of 1 on 1½ see inside of back cover.

Copyright, 1914, by Eugene Dietzgen Co.

The paper stock of this book is made of a high grade 50% rag paper having a water resisting surface and is sewed with Bing Special Enamel Waterproof Thread.

144-29

Scanned

July 13, 12

Shanney

Sec 12 MUSCO
 1500 ft SP per A
 2.5 cas. Asp. Rely SP
 1.5 " " " " " "
 10 in asp
 15 cas asp

Long Red jock
 per A

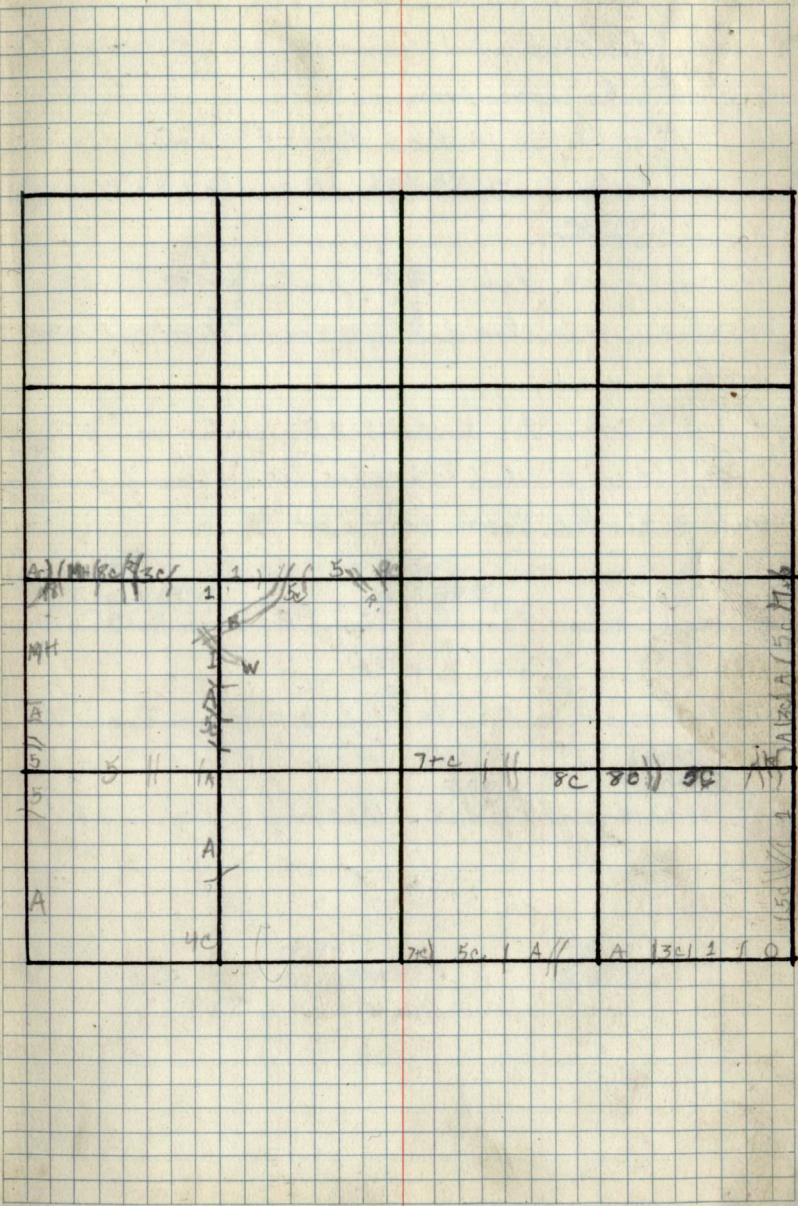
Sec 11
 Old Red jock on Ridge
 Aspen Loop
 Aspen Ridge

DISTANCES FROM CENTER OF ROADWAY FOR
 CROSS-SECTIONING.

Roadway 16 feet wide. Side Slopes 1 on 1½
 For Single Track Embankment.

H	0	.1	.2	.3	.4	.5	.6	.7	.8	.9	H
0	8.0	8.2	8.3	8.5	8.6	8.8	8.9	9.1	9.2	9.4	0
1	9.5	9.7	9.8	10.0	10.1	10.3	10.4	10.6	10.7	10.9	1
2	11.0	11.2	11.3	11.5	11.6	11.8	11.9	12.1	12.2	12.4	2
3	12.5	12.7	12.8	13.0	13.1	13.3	13.4	13.6	13.7	13.9	3
4	14.0	14.2	14.3	14.5	14.6	14.8	14.9	15.1	15.2	15.4	4
5	15.5	15.7	15.8	16.0	16.1	16.3	16.4	16.6	16.7	16.9	5
6	17.0	17.2	17.3	17.5	17.6	17.8	17.9	18.1	18.2	18.4	6
7	18.5	18.7	18.8	19.0	19.1	19.3	19.4	19.6	19.7	19.9	7
8	20.0	20.2	20.3	20.5	20.6	20.8	20.9	21.1	21.2	21.4	8
9	21.5	21.7	21.8	22.0	22.1	22.3	22.4	22.6	22.7	22.9	9
10	23.0	23.2	23.3	23.5	23.6	23.8	23.9	24.1	24.2	24.4	10
11	24.5	24.7	24.8	25.0	25.1	25.3	25.4	25.6	25.7	25.9	11
12	26.0	26.2	26.3	26.5	26.6	26.8	26.9	27.1	27.2	27.4	12
13	27.5	27.7	27.8	28.0	28.1	28.3	28.4	28.6	28.7	28.9	13
14	29.0	29.2	29.3	29.5	29.6	29.8	29.9	30.1	30.2	30.4	14
15	30.5	30.7	30.8	31.0	31.1	31.3	31.4	31.6	31.7	31.9	15
16	32.0	32.2	32.3	32.5	32.6	32.8	32.9	33.1	33.2	33.4	16
17	33.5	33.7	33.8	34.0	34.1	34.3	34.4	34.6	34.7	34.9	17
18	35.0	35.2	35.3	35.5	35.6	35.8	35.9	36.1	36.2	36.4	18
19	36.5	36.7	36.8	37.0	37.1	37.3	37.4	37.6	37.7	37.9	19
20	38.0	38.2	38.3	38.5	38.6	38.8	38.9	39.1	39.2	39.4	20
21	39.5	39.7	39.8	40.0	40.1	40.3	40.4	40.6	40.7	40.9	21
22	41.0	41.2	41.3	41.5	41.6	41.8	41.9	42.1	42.2	42.4	22
23	42.5	42.7	42.8	43.0	43.1	43.3	43.4	43.6	43.7	43.9	23
24	44.0	44.2	44.3	44.5	44.6	44.8	44.9	45.1	45.2	45.4	24
25	45.5	45.7	45.8	46.0	46.1	46.3	46.4	46.6	46.7	46.9	25
26	47.0	47.2	47.3	47.5	47.6	47.8	47.9	48.1	48.2	48.4	26
27	48.5	48.7	48.8	49.0	49.1	49.3	49.4	49.6	49.7	49.9	27
28	50.0	50.2	50.3	50.5	50.6	50.8	50.9	51.1	51.2	51.4	28
29	51.5	51.7	51.8	52.0	52.1	52.3	52.4	52.6	52.7	52.9	29
30	53.0	53.2	53.3	53.5	53.6	53.8	53.9	54.1	54.2	54.4	30
31	54.5	54.7	54.8	55.0	55.1	55.3	55.4	55.6	55.7	55.9	31
32	56.0	56.2	56.3	56.5	56.6	56.8	56.9	57.1	57.2	57.4	32
33	57.5	57.7	57.8	58.0	58.1	58.3	58.4	58.6	58.7	58.9	33
34	59.0	59.2	59.3	59.5	59.6	59.8	59.9	60.1	60.2	60.4	34
35	60.5	60.7	60.8	61.0	61.1	61.3	61.4	61.6	61.7	61.9	35
36	62.0	62.2	62.3	62.5	62.6	62.8	62.9	63.1	63.2	63.4	36
37	63.5	63.7	63.8	64.0	64.1	64.3	64.4	64.6	64.7	64.9	37
38	65.0	65.2	65.3	65.5	65.6	65.8	65.9	66.1	66.2	66.4	38
39	66.5	66.7	66.8	67.0	67.1	67.3	67.4	67.6	67.7	67.9	39
40	68.0	68.2	68.3	68.5	68.6	68.8	68.9	69.1	69.2	69.4	40

Example—If point is 22.6 ft. above grade, how far should it be from center line to be a slope stake point? Ans. from Table 41.9. For same slopes but other widths of roadbed correct above figures by one-half difference in width of roadbed; thus in example above for 20 ft. roadbed distance will be $41.9 + (20 - 16) \div 2$ or 2 ft. added to 41.9 = 43.9. For slopes of 1 on 1 see inside of front cover.



Set 1/4 corner #13 Sec 1. Set 1 F.S. post on Witness
tree, (Red pine which is inches dia.) Bearing N13°E.

#36 links from corner.

Set 1/4 corner #14 Sec 1. Set 1 F.S. post on Witness
tree, (Aspen 6 inches dia.) Bearing N. 52°W. + 46 links
from corner.

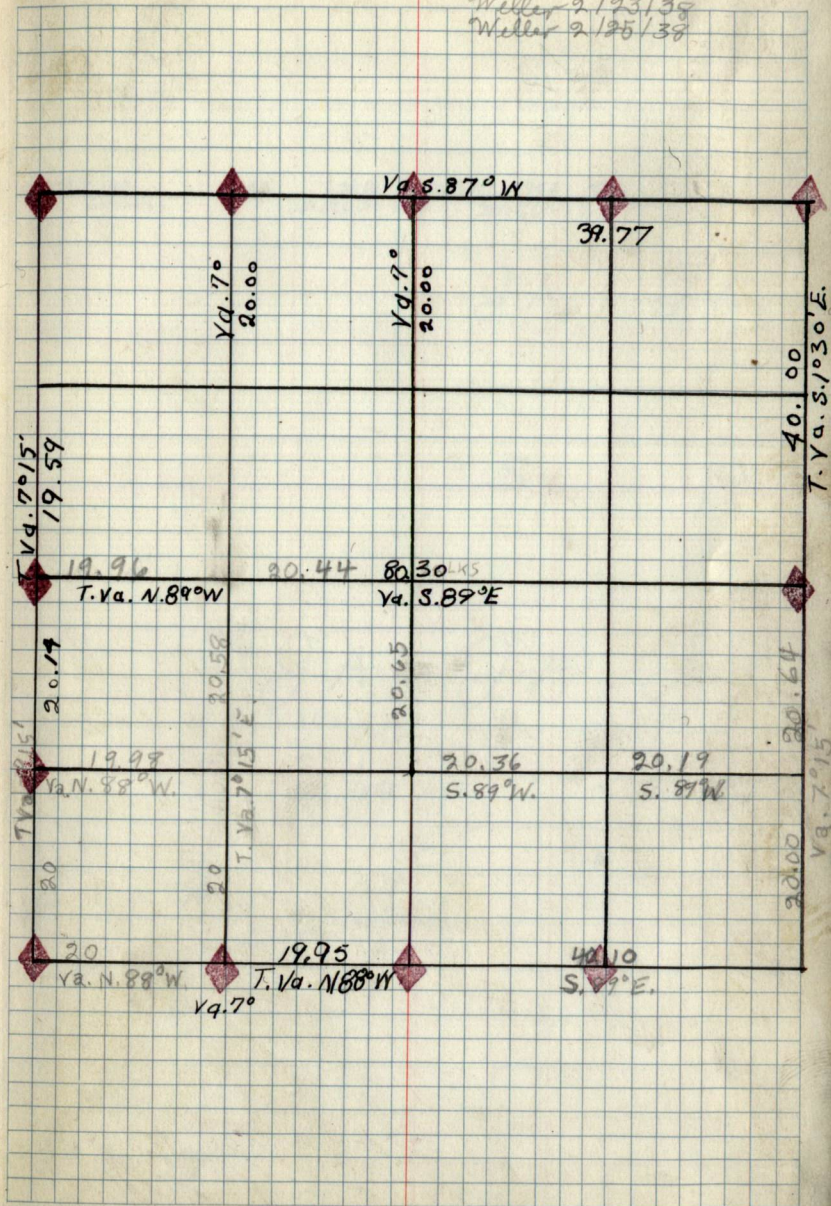
1/4 corner #12. Set 1 F.S. post on 'Witness
Tree', (Balsam 6 inches dia.) Bearing N. 80°30'E. + 38 links
from corner.

Set C. 1/4 corner Sec 1. Set 1 F.S. post on 'Witness
Tree', (Red pine 6 1/2 inches dia.) Bearing N. 37°W.
and 2 links from corner

Set 1/4 corner #16. Set 1 F.S. post on 'Witness
Tree', (Cedar 7 inches dia.) Bearing N. 12°W. and
79 links from corner.

Set 1/4 corner on S. 1. 143. Set 2 F.S. post on 'Witness
Tree', (Red pine 13 inches dia.) Bearing N. 47°E. - 24 links
(2), (Red pine 18 inches dia.) Bearing S. 71°W. - 28 links

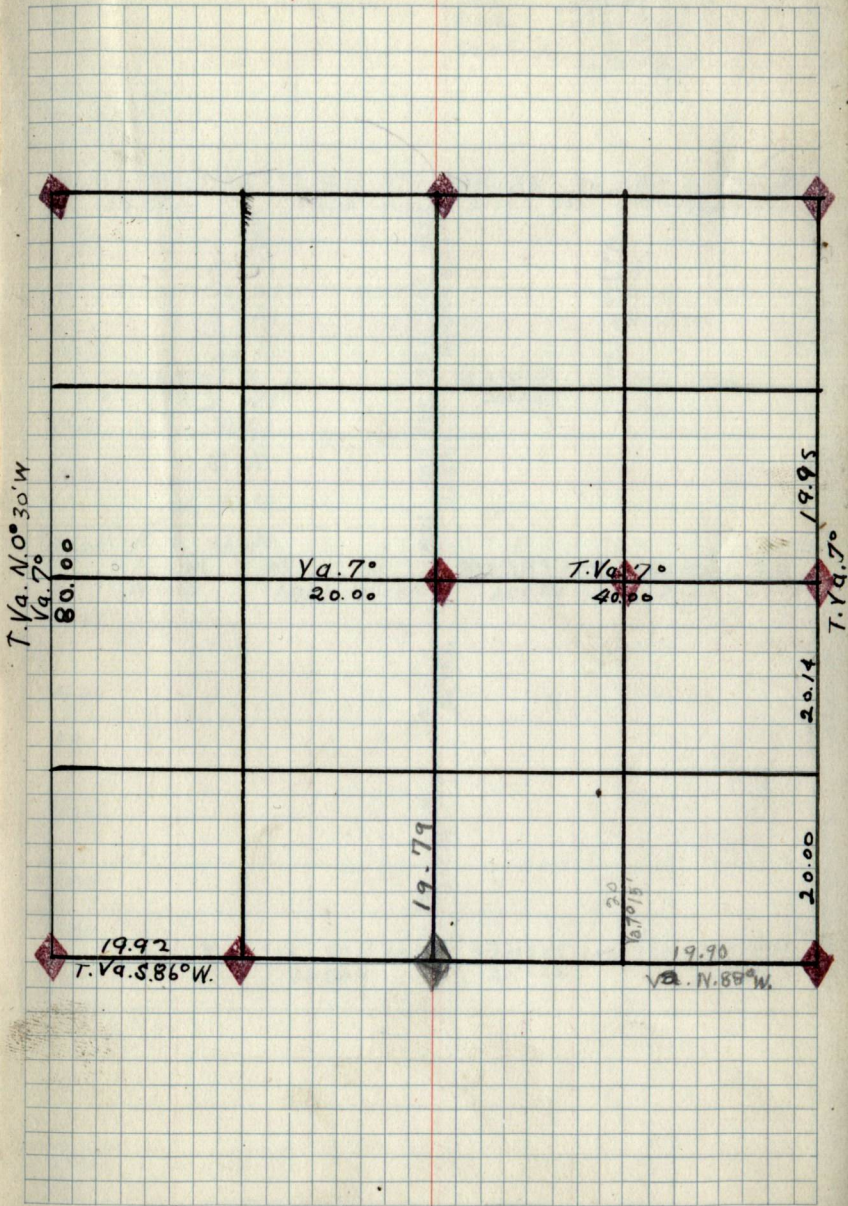
Weller 2/14/38
Weller 2/15/38
Weller 2/16/38
Weller 2/21/38
Weller 2/23/38
Weller 2/25/38



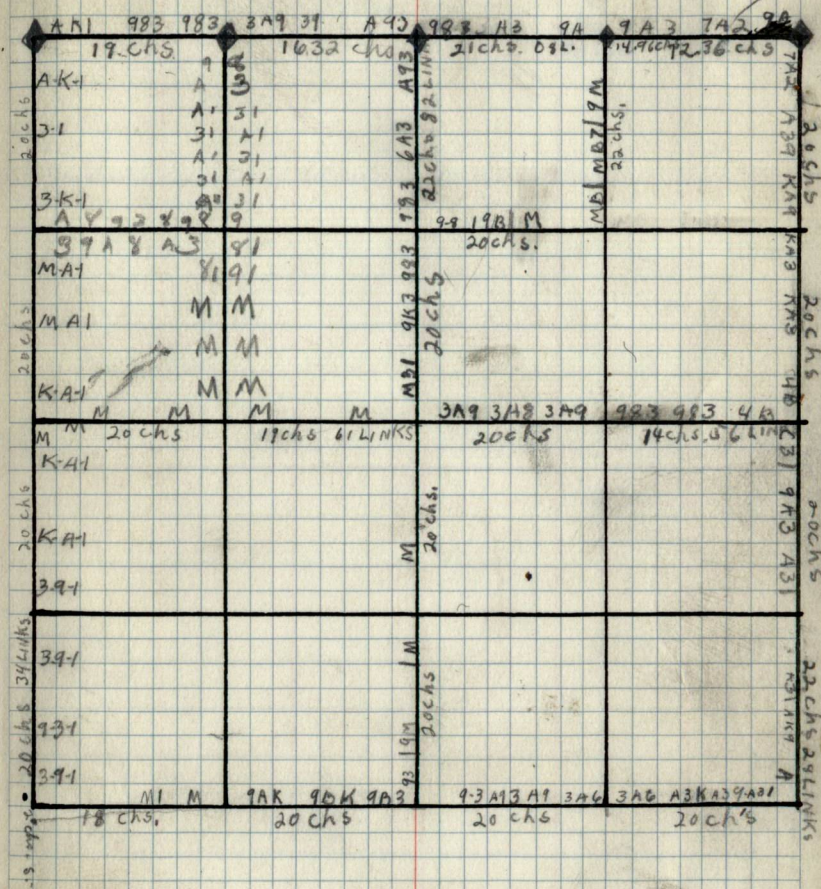
2

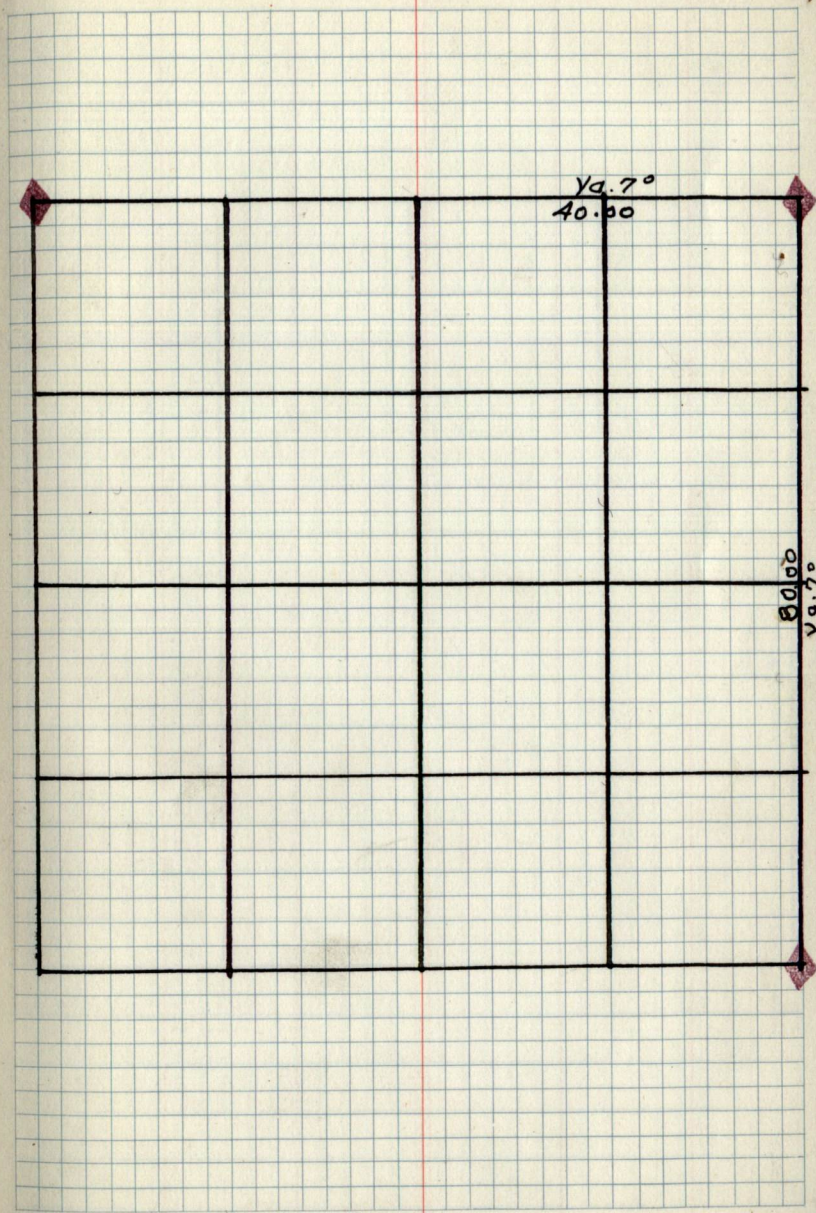
Lee 11/1/38
 Scofield 11/8/38
 Scofield 11/14/38

A29/A3 20.76 CHS	A3 20.96 CHS	A3/A3 20.61 CHS	A3/A3 20.61 CHS
		JA	JA
		S	P
$\frac{20}{90}$ $\frac{11}{11}$ $\frac{10}{10}$ $\frac{11}{11}$ $\frac{10}{10}$	JA	JA	JA
$\frac{10}{10}$ $\frac{11}{11}$ $\frac{10}{10}$	$\frac{10}{10}$ $\frac{11}{11}$ $\frac{10}{10}$	$\frac{10}{10}$ $\frac{11}{11}$ $\frac{10}{10}$	A
		$\frac{10}{10}$ $\frac{11}{11}$ $\frac{10}{10}$	A
		$\frac{10}{10}$ $\frac{11}{11}$ $\frac{10}{10}$	A



Lee 10/24/38
 Lee 10/25/38
 Lee 10/26/38
 Lee 10/27/38
 Lee 10/28/38
 Lee 10/31/38
 Sootfield 11/2/38

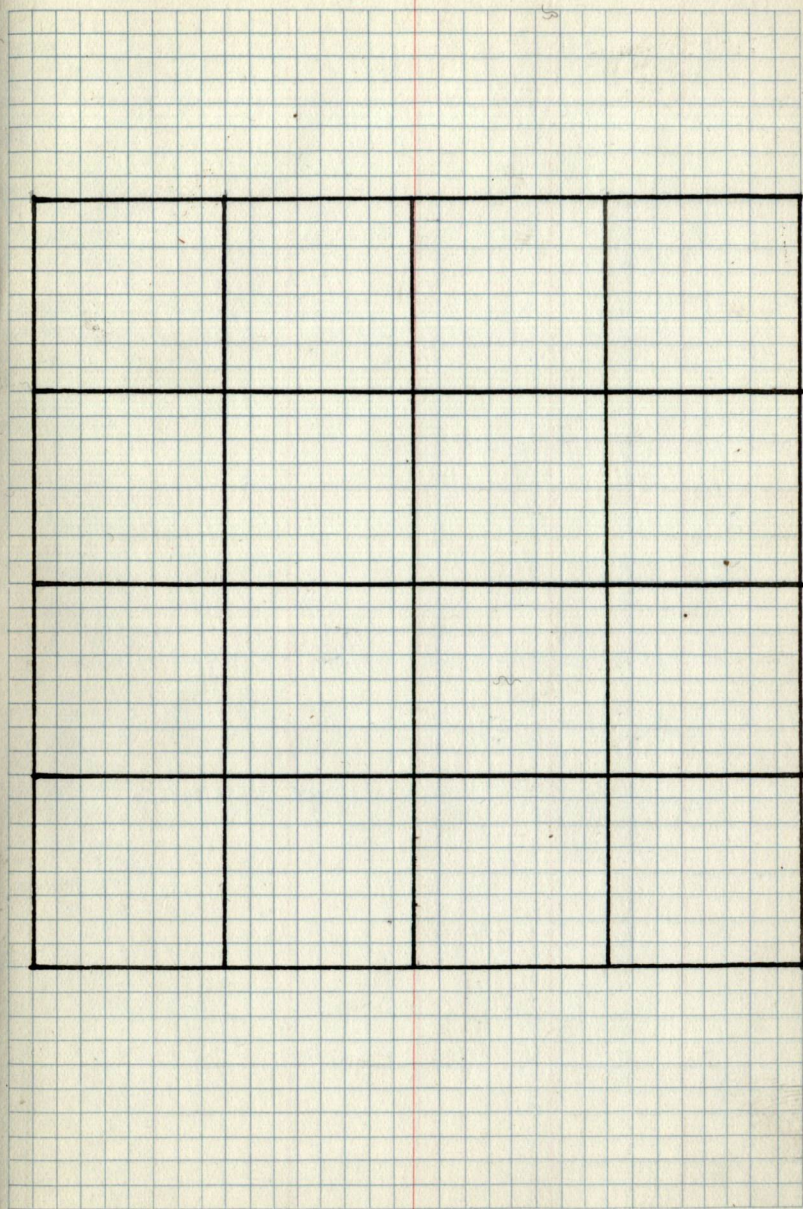
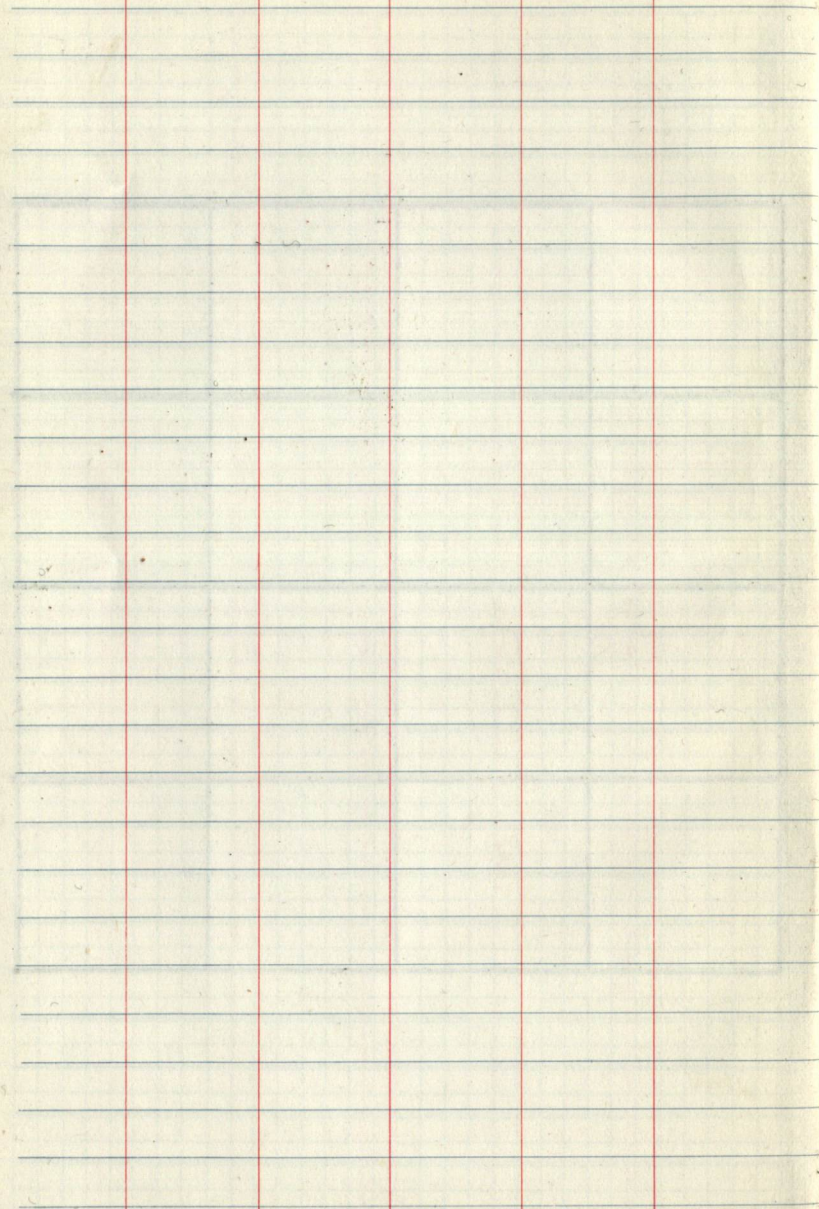




4

4

A grid on graph paper with a 4x4 table structure. The table is drawn with thick black lines. The grid is 20 squares wide and 20 squares high. The table structure is as follows:



5

5

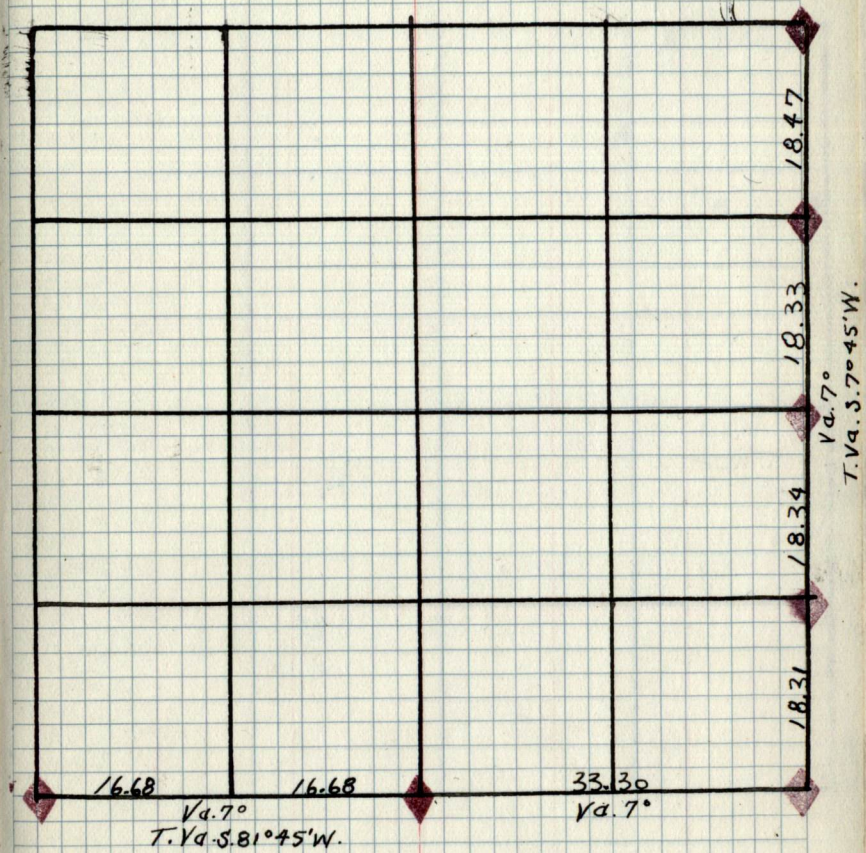
36.23

5

Pages 5A-10
Are Blank

5

A large grid on graph paper with a 4x4 sub-grid highlighted in black.



			A 5 Ac 15
			A
			A 15

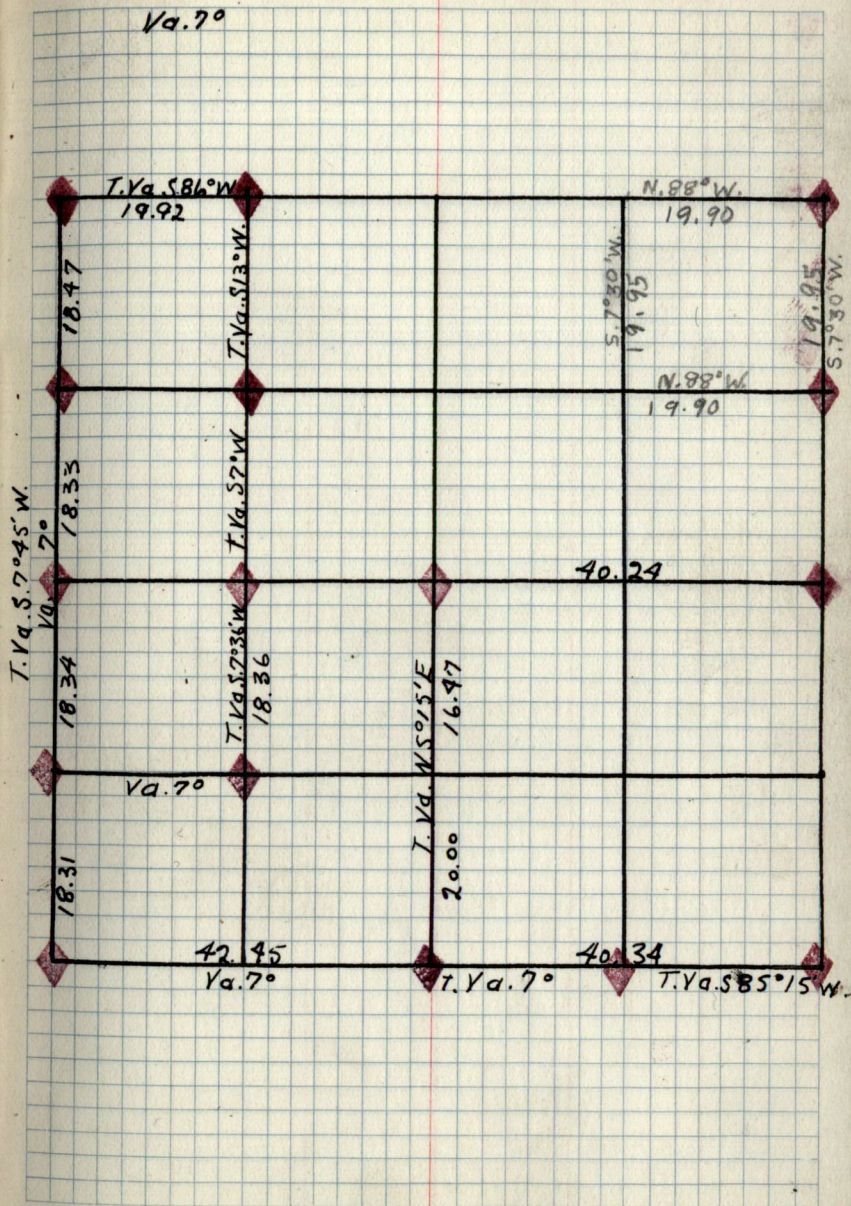
11

Set $\frac{1}{16}$ corner # 2 Sec. 11. Set F.S. poster
on bearing tree, (Oak 7" d.b.h.), bearing N. 14° W.
13 links.

Set $\frac{1}{16}$ corner # 6. Set F.S. poster on 'witness tree',
(Aspen 7" d.b.h.), bearing N. 58° W. = 19 links

Weller 3/1/38
Weller 3/3/38
Weller 3/3/38

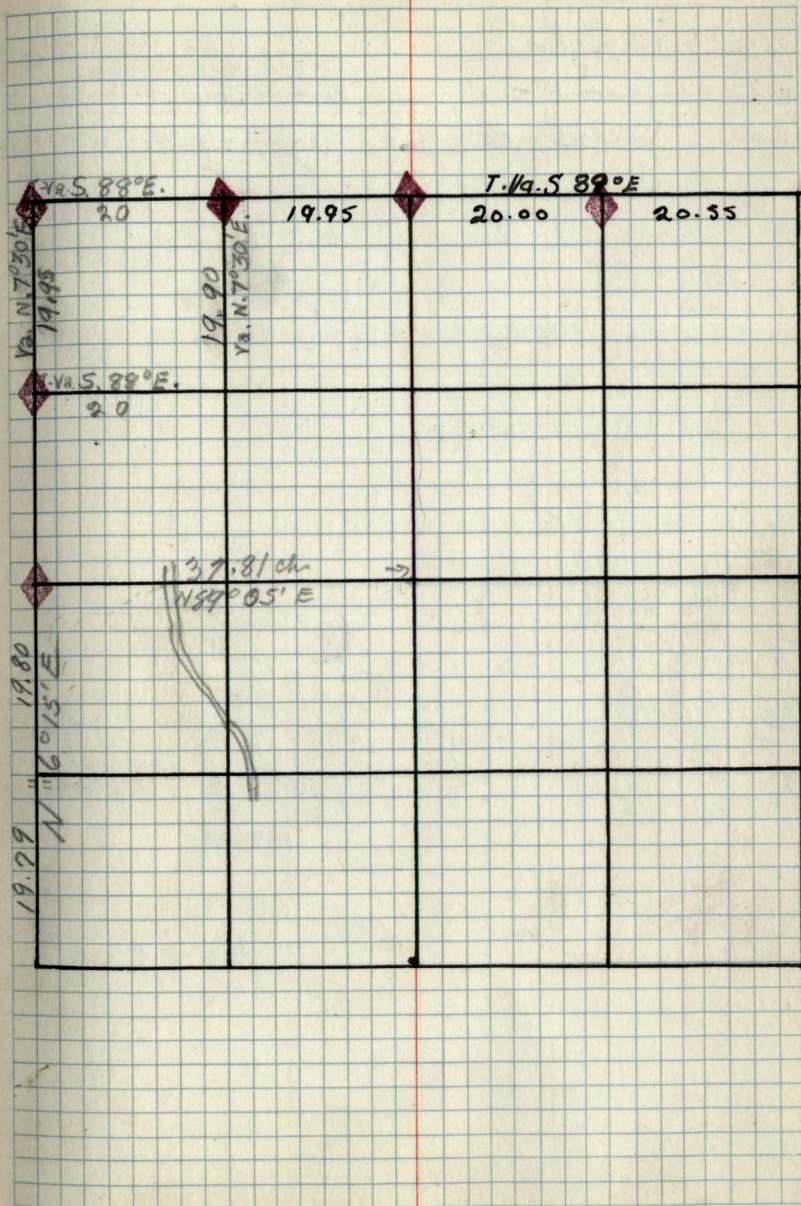
11



AC	4c		
$\frac{B}{AC}$	SE		
$\frac{AC}{B}$ //			

Set $\frac{1}{4}$ Corner #3. Set I.F.S. poster on 'Witness Tree', (Jack Pine 15" d.b.h.) Bearing N. 19° E - 30 LKS.
 Set $\frac{1}{4}$ Corner #4. Set F.S. poster on 'Witness Tree', (Jack Pine 10" d.b.h.) Bearing N. 29° E - 11 links

Weller 2/28/38
 Weller 3/1/38



BC 3 9 AC			
BC 7 6	BC 1 5 BC 4 + BC		
BC BC	BC		

Set $\frac{1}{16}$ corner # 10. Set F.S. post on 'Witness Tree', (Birch 5" d. b.h.) Bearing N. 64° W. 20 LKS.

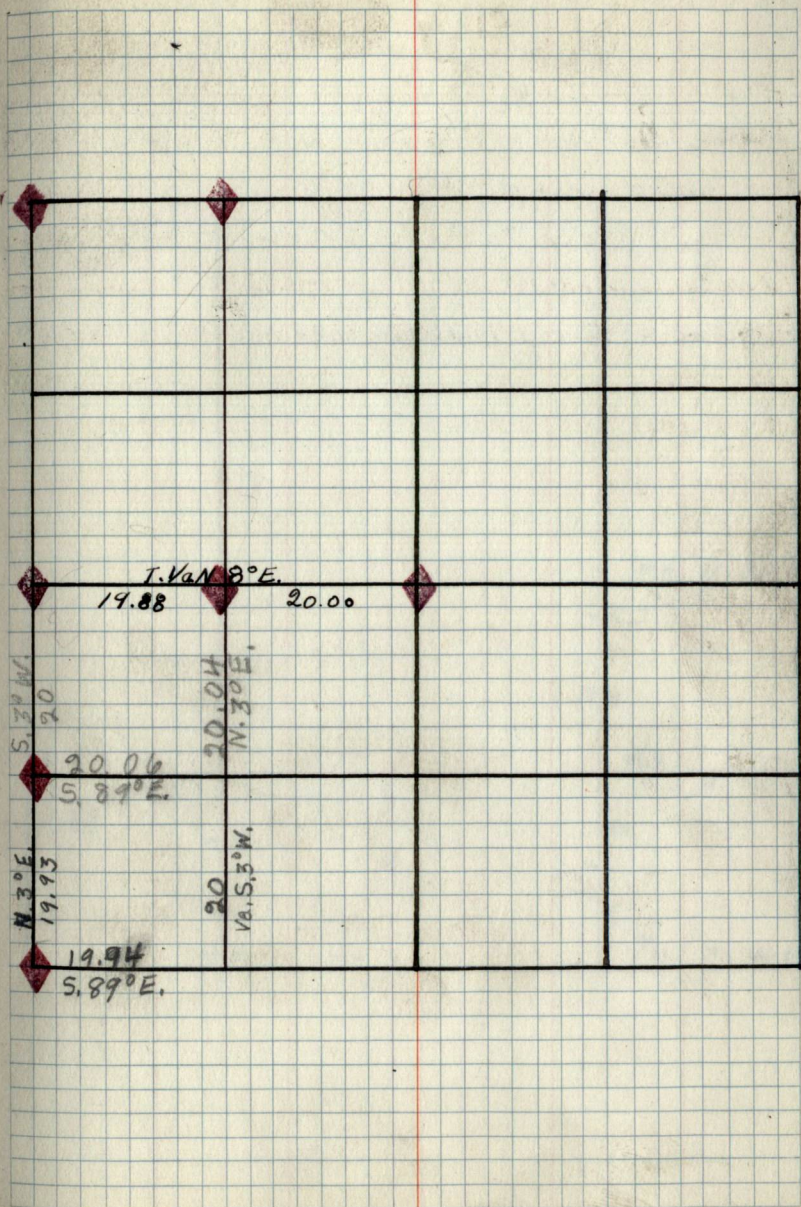
Set $\frac{1}{16}$ corner # 11. Set F.S. post on 'Witness Tree', (Balsam $5\frac{1}{2}$ " d. b.h.) Bearing N. 84° E. 25 LINKS

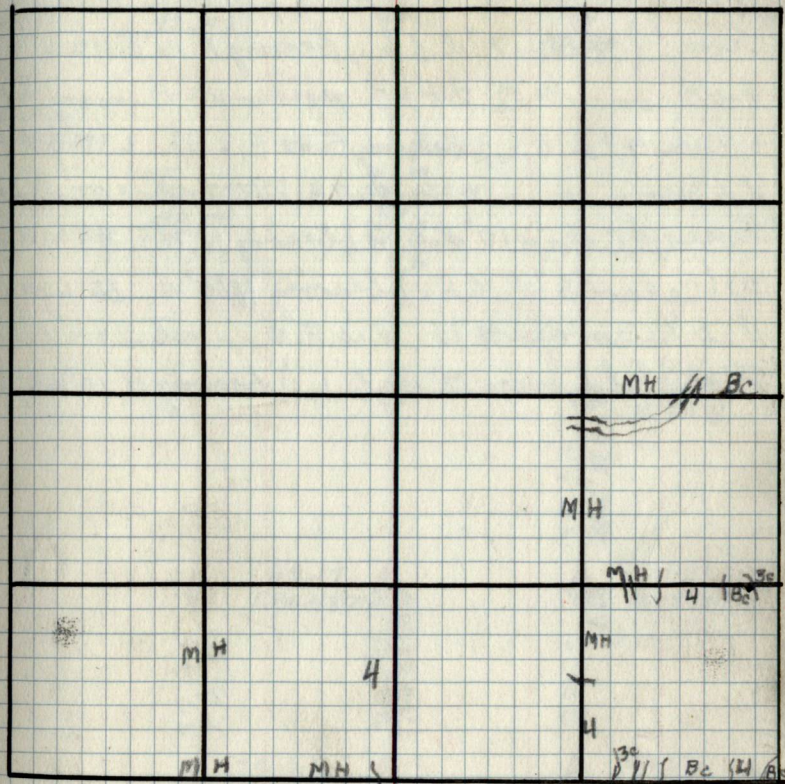
Set $\frac{1}{16}$ corner # 16. Set F.S. post on 'Bearing Tree', (Birch 9" d. b.h.), Bearing N. 10° W. 20 LKS.

Set SEC, corner 13-14-23-24. Set 2 FS. posts on 'Bearing trees', (1) (Red Pine 18 in d. b.h.) bearing S. 71° E.

30 LINKS, (2) (White Pine 11" d. b.h.), bearing N. 82° W. 25 LINKS.

Weller 3/4/38
Weller 3/7/38



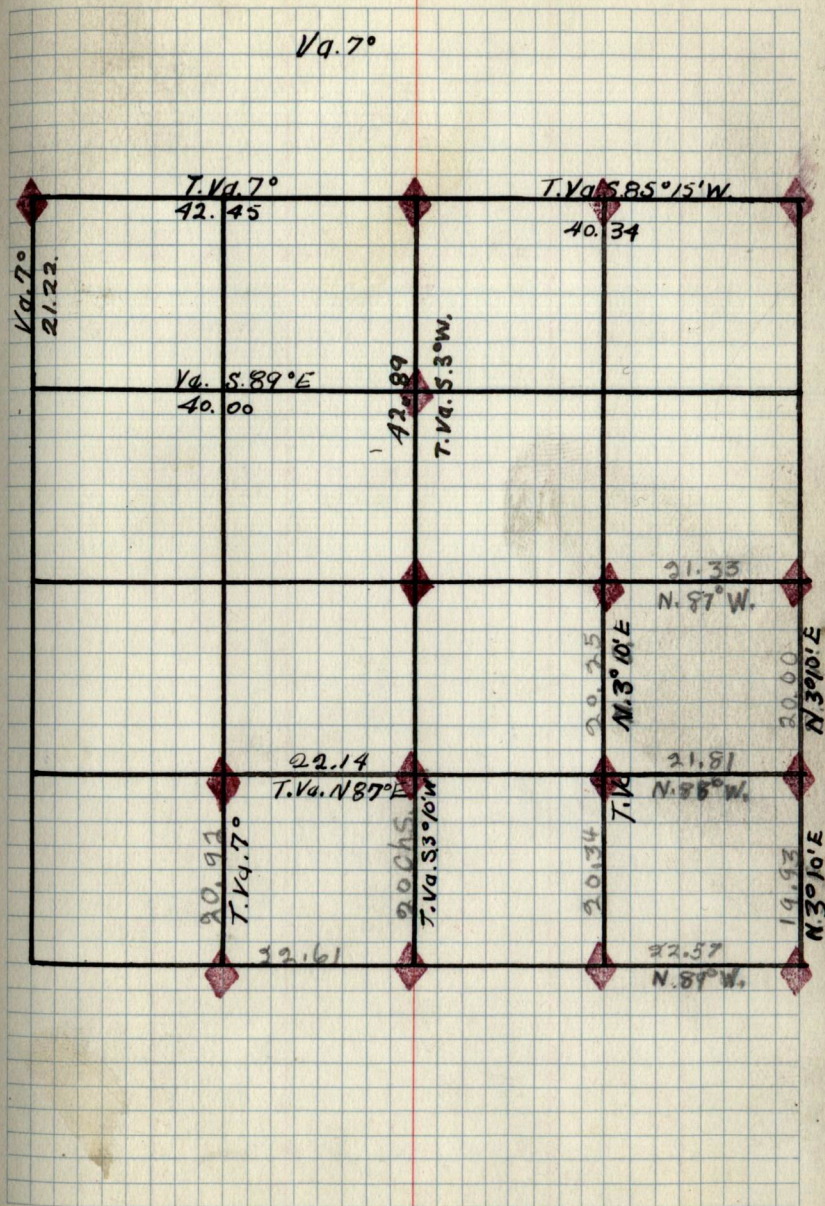


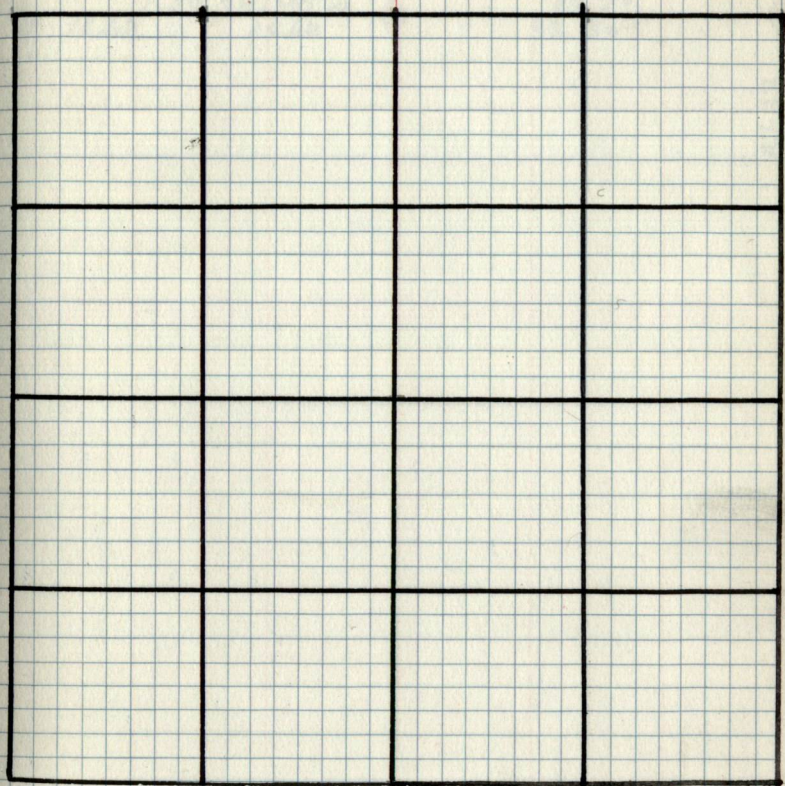
- Set $\frac{1}{16}$ Corner #13. Set F.S. post on 'Witness Tree',
 (Spruce 9" d.b.h.), bearing N. 15° W - 24 LINKS.
 Set $\frac{1}{16}$ Corner #8. Set F.S. post on 'Witness Tree',
 (ASH 9" d.b.h.), bearing N. 6° W. - 42 LINKS.
 Set $\frac{1}{16}$ Corner #15. Set F.S. post on 'Bearing
 Tree', (Cedar 7" d.b.h.) bearing N. 16° E. - 12 LINKS.
 Set $\frac{1}{16}$ corner #12. Set F.S. post on 'Bearing Tree',
 (Ash 7" d.b.h.), bearing S. 48° E. - 11 LINKS.
 Set $\frac{1}{4}$ corner on S.L. 14-23. Set 2 F.S. posts on Bearing
 Trees: (1) Cedar 10" d.b.h.), bearing N. 78° E. 39 LINKS.
 (2) Cedar 15" d.b.h.), bearing N 85° W. 52 LINKS.
 Set $\frac{1}{16}$ Corner #16. Set F.S. post on 'Bearing
 Tree', (Spruce 7" d.b.h.), bearing N. 10° W. 22 LINKS.

Weller 3/8/38

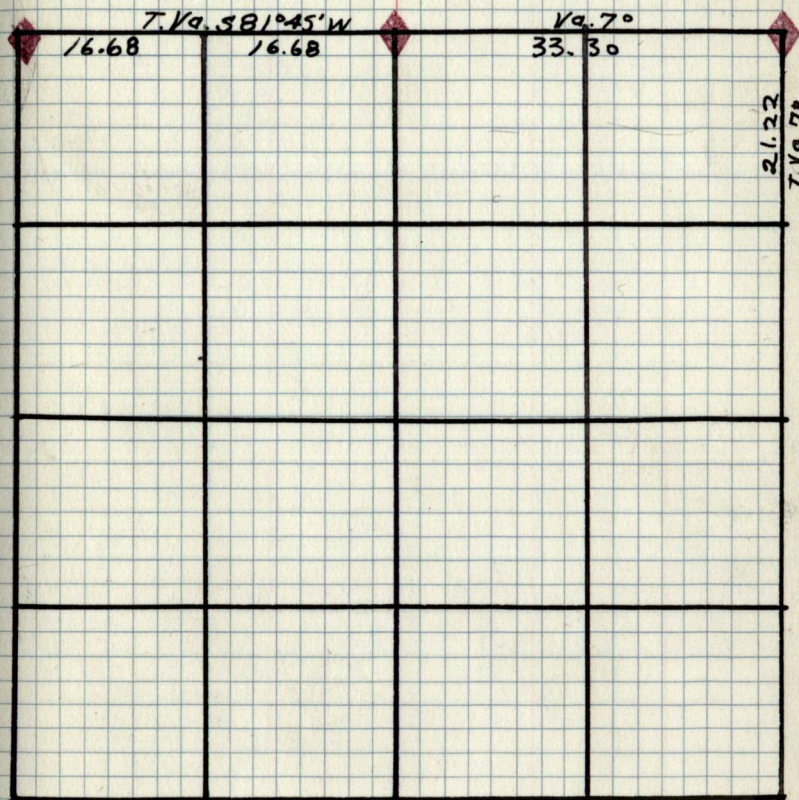
Weller 3/9/38

Weller 3/10/38

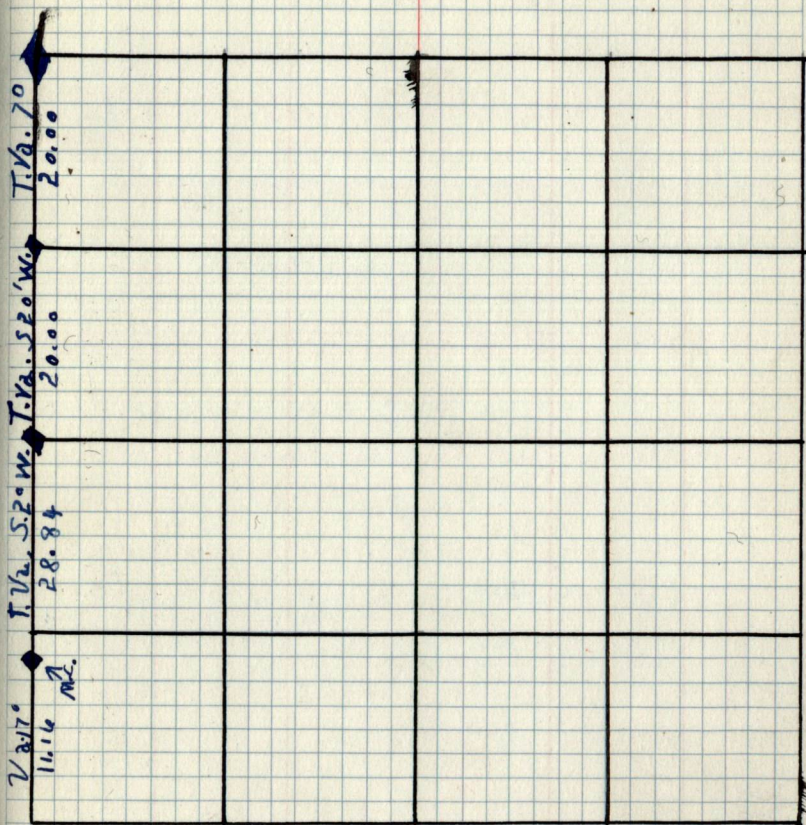




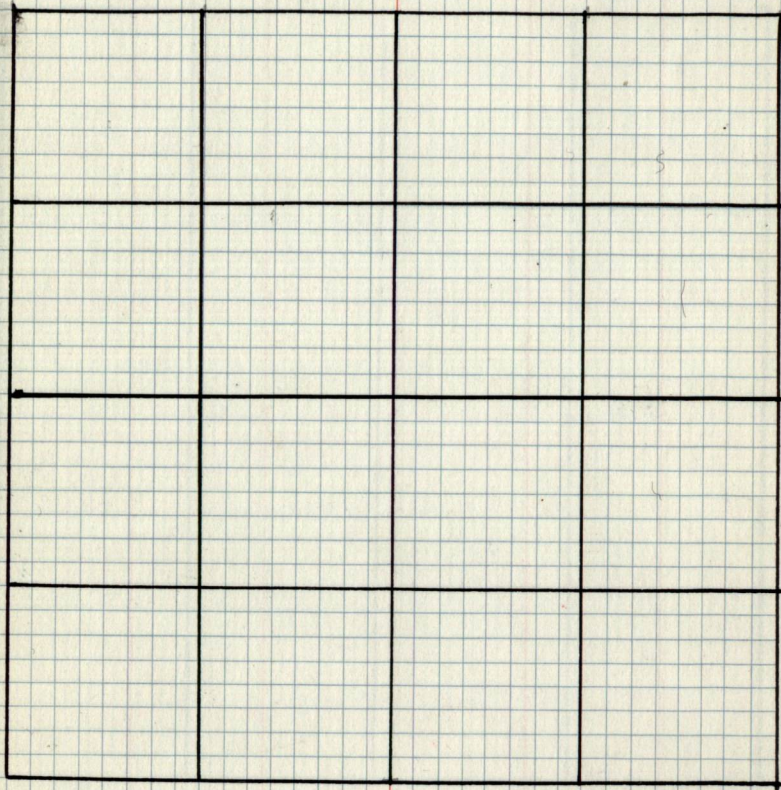
Va. 7°



Pages 16-27
are Blank



Pages 28-34
are Blank



34

34

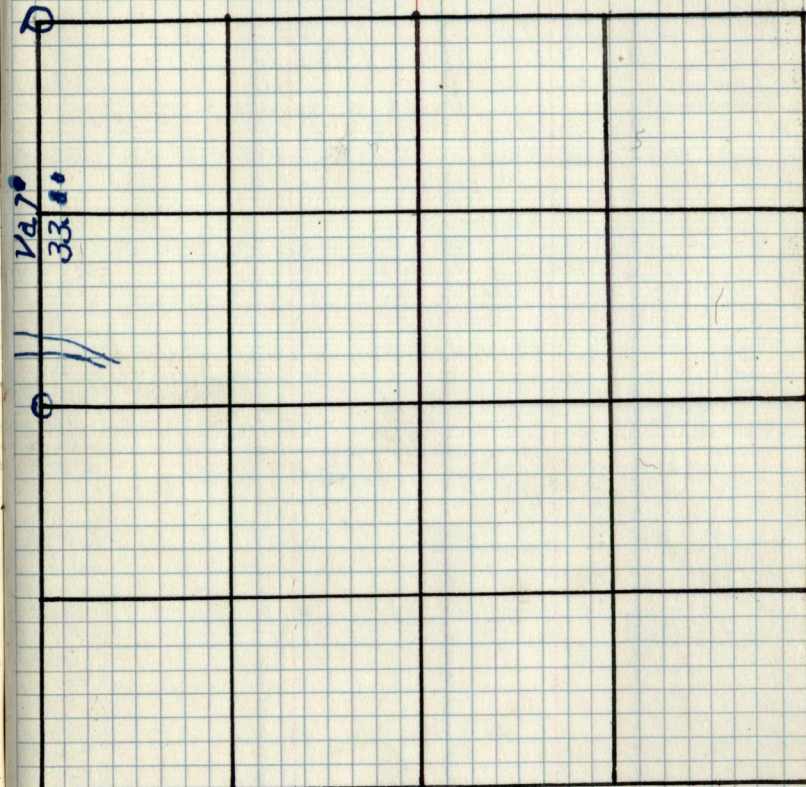
Q

100
100

Q

100
33

Q



Pages 35- End
are Blank
