

T 143 N R 26 N

THE  
WASHINGTON

ccc

11



TABLES FOR EXCAVATIONS AND EMBANKMENTS.

DISTANCES FROM CENTER OF ROADWAY FOR CROSS-SECTIONING-  
ROADWAY 18 FEET WIDE. SIDE SLOPES 1 TO 1.  
FOR SINGLE TRACK EXCAVATION.

	0	.1	.2	.3	.4	.5	.6	.7	.8	.9	
0	9.0	9.1	9.2	9.3	9.4	9.5	9.6	9.7	9.8	9.9	0
1	10.0	10.1	10.2	10.3	10.4	10.5	10.6	10.7	10.8	10.9	1
2	11.0	11.1	11.2	11.3	11.4	11.5	11.6	11.7	11.8	11.9	2
3	12.0	12.1	12.2	12.3	12.4	12.5	12.6	12.7	12.8	12.9	3
4	13.0	13.1	13.2	13.3	13.4	13.5	13.6	13.7	13.8	13.9	4
5	14.0	14.1	14.2	14.3	14.4	14.5	14.6	14.7	14.8	14.9	5
6	15.0	15.1	15.2	15.3	15.4	15.5	15.6	15.7	15.8	15.9	6
7	16.0	16.1	16.2	16.3	16.4	16.5	16.6	16.7	16.8	16.9	7
8	17.0	17.1	17.2	17.3	17.4	17.5	17.6	17.7	17.8	17.9	8
9	18.0	18.1	18.2	18.3	18.4	18.5	18.6	18.7	18.8	18.9	9
10	19.0	19.1	19.2	19.3	19.4	19.5	19.6	19.7	19.8	19.9	10
11	20.0	20.1	20.2	20.3	20.4	20.5	20.6	20.7	20.8	20.9	11
12	21.0	21.1	21.2	21.3	21.4	21.5	21.6	21.7	21.8	21.9	12
13	22.0	22.1	22.2	22.3	22.4	22.5	22.6	22.7	22.8	22.9	13
14	23.0	23.1	23.2	23.3	23.4	23.5	23.6	23.7	23.8	23.9	14
15	24.0	24.1	24.2	24.3	24.4	24.5	24.6	24.7	24.8	24.9	15
16	25.0	25.1	25.2	25.3	25.4	25.5	25.6	25.7	25.8	25.9	16
17	26.0	26.1	26.2	26.3	26.4	26.5	26.6	26.7	26.8	26.9	17
18	27.0	27.1	27.2	27.3	27.4	27.5	27.6	27.7	27.8	27.9	18
19	28.0	28.1	28.2	28.3	28.4	28.5	28.6	28.7	28.8	28.9	19
20	29.0	29.1	29.2	29.3	29.4	29.5	29.6	29.7	29.8	29.9	20
21	30.0	30.1	30.2	30.3	30.4	30.5	30.6	30.7	30.8	30.9	21
22	31.0	31.1	31.2	31.3	31.4	31.5	31.6	31.7	31.8	31.9	22
23	32.0	32.1	32.2	32.3	32.4	32.5	32.6	32.7	32.8	32.9	23
24	33.0	33.1	33.2	33.3	33.4	33.5	33.6	33.7	33.8	33.9	24
25	34.0	34.1	34.2	34.3	34.4	34.5	34.6	34.7	34.8	34.9	25
26	35.0	35.1	35.2	35.3	35.4	35.5	35.6	35.7	35.8	35.9	26
27	36.0	36.1	36.2	36.3	36.4	36.5	36.6	36.7	36.8	36.9	27
28	37.0	37.1	37.2	37.3	37.4	37.5	37.6	37.7	37.8	37.9	28
29	38.0	38.1	38.2	38.3	38.4	38.5	38.6	38.7	38.8	38.9	29
30	39.0	39.1	39.2	39.3	39.4	39.5	39.6	39.7	39.8	39.9	30
31	40.0	40.1	40.2	40.3	40.4	40.5	40.6	40.7	40.8	40.9	31
32	41.0	41.1	41.2	41.3	41.4	41.5	41.6	41.7	41.8	41.9	32
33	42.0	42.1	42.2	42.3	42.4	42.5	42.6	42.7	42.8	42.9	33
34	43.0	43.1	43.2	43.3	43.4	43.5	43.6	43.7	43.8	43.9	34
35	44.0	44.1	44.2	44.3	44.4	44.5	44.6	44.7	44.8	44.9	35
36	45.0	45.1	45.2	45.3	45.4	45.5	45.6	45.7	45.8	45.9	36

FIELD COPY  
T 143 N R 26 W

first aid kit  
Radio

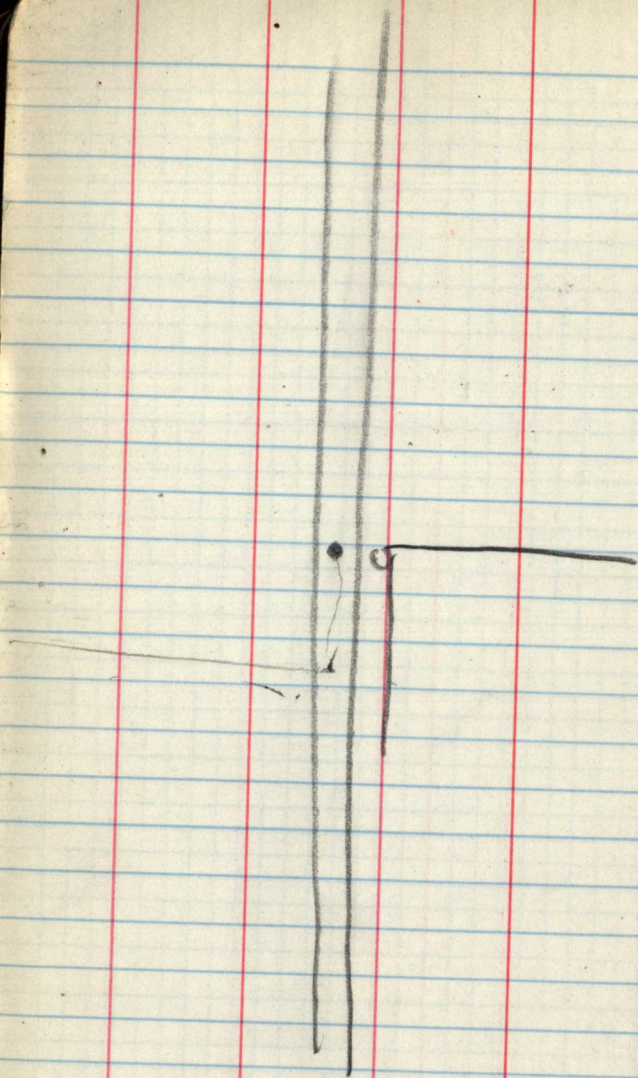
carry saw back wards

USFS  
CCC Book # 11  
T143N R26W  
circa 1937

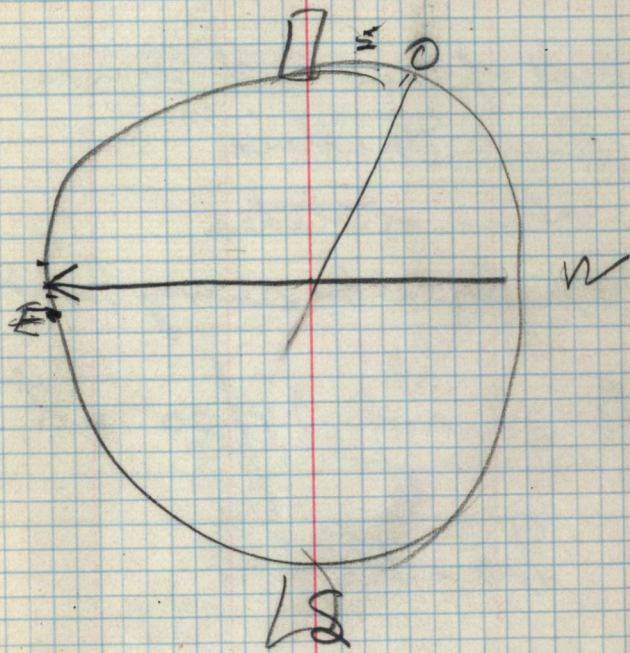
143-26  
Scanned  
July 12, 2012  
Khanney

6  
7  
8  
9  
10



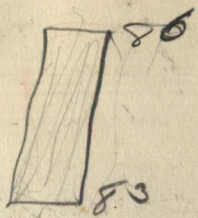


N 89 E





1. check 90's on stake
2. Look for Sec. Co. at  
83-86 - West about  
1 chain
3. Rest of crew cut line  
Gus - Mullins  
3/4 on stakes  
look for old survey line -  
N along 19/20 at  
Va 13°



$$66 \overline{) 2751.9}$$

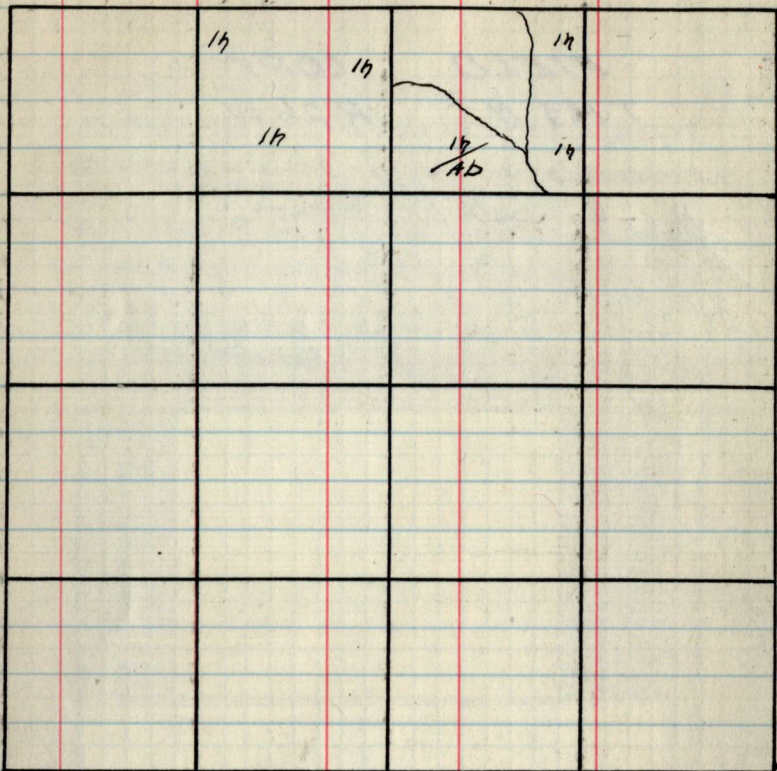
$$\begin{array}{r}
 2751.9 \\
 2781.9 \\
 \hline
 54838 \\
 528 \\
 \hline
 19338 \\
 158 \\
 \hline
 132 \\
 \hline
 260
 \end{array}$$

83.24



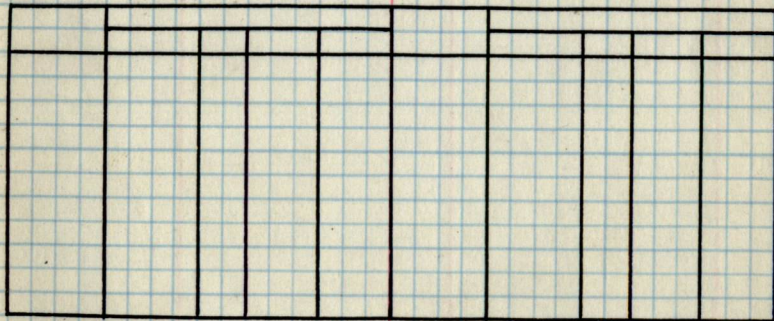
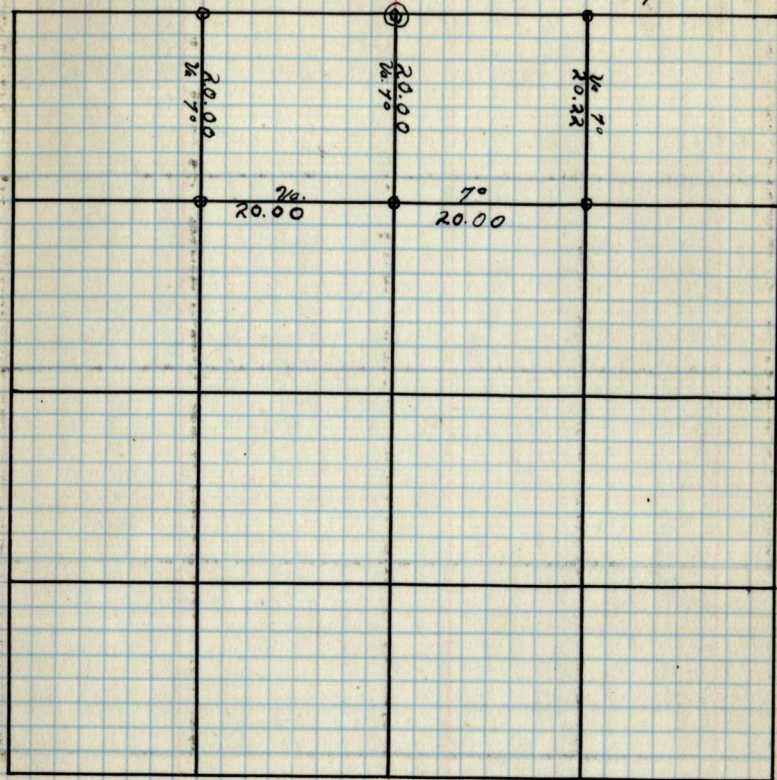






$\frac{1}{4}$  cor.  $\frac{36}{1}$  established by J. Gjelhang 1937

Sec. 1 T142N R26W. 8/5/38 G. Byroad



















































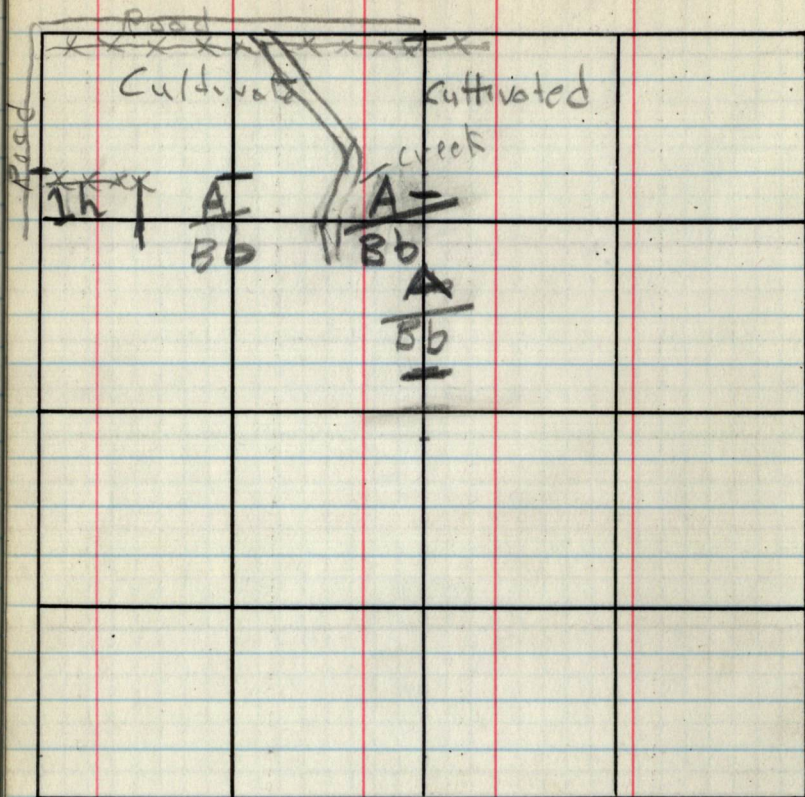










	19.44	19.44	20.00	
19.44	19.44		20.00	













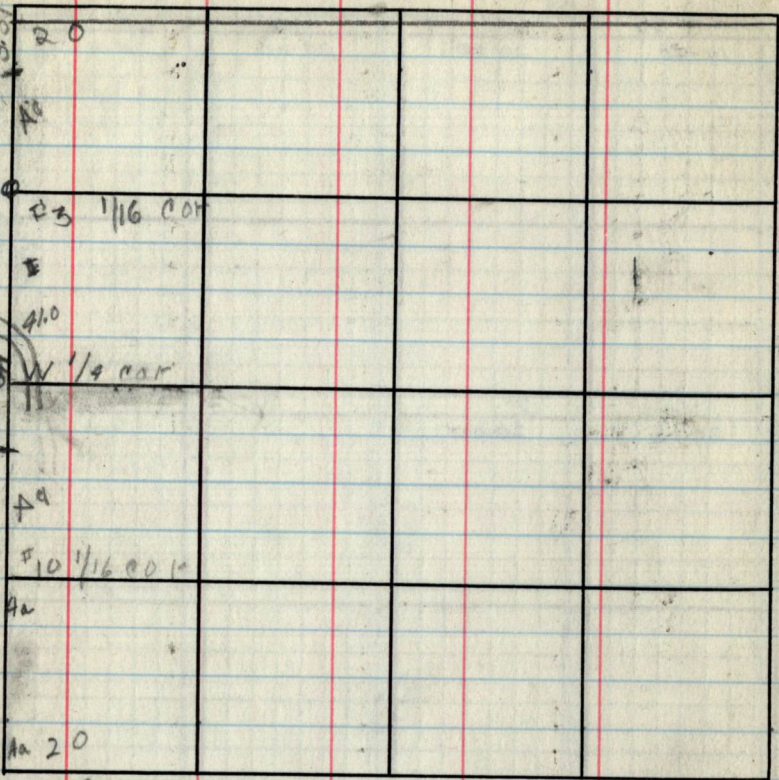




$V_a$ 19.50	$4^\circ$ 20.00	$V_a$ 20.00	$8^\circ$ 20.00
			$7\frac{1}{2}^\circ$ 43.5
$V_a$ 20.00	$7^\circ$ 20.00	$7^\circ$ 20.00	$7\frac{1}{2}^\circ$ 12:30 40.00
$V_a$	$7^\circ$	$V_a$ 20.00	

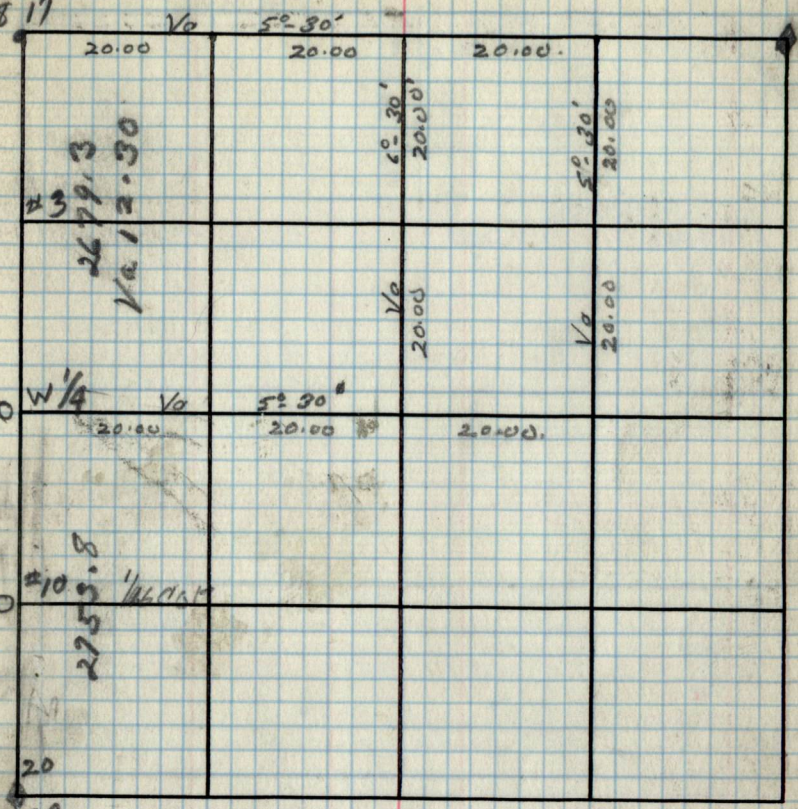



19  
33/ohc

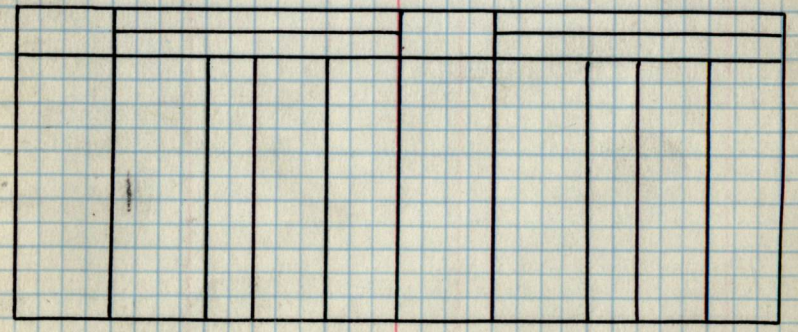


19 Au 20  
30 29

18 17

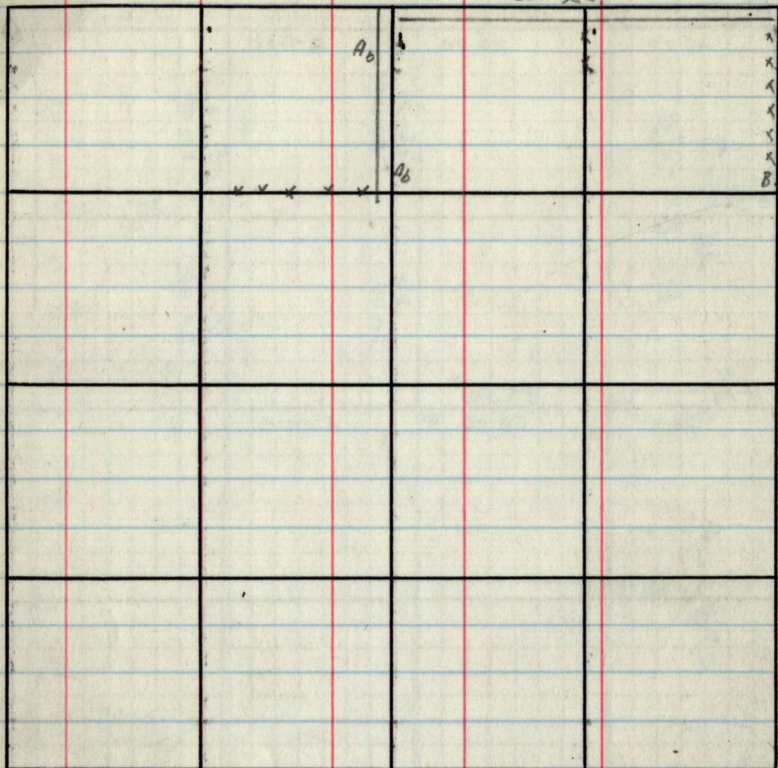


19 20  
30 29

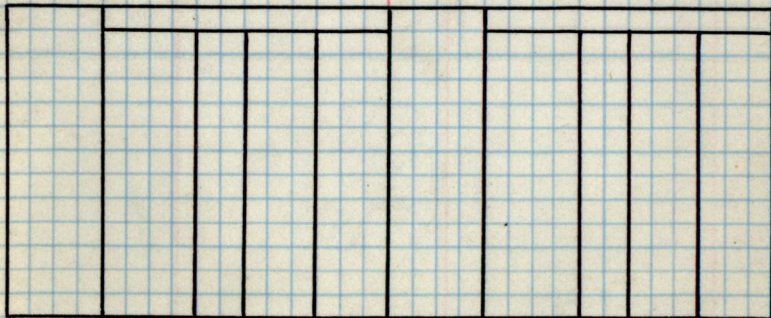
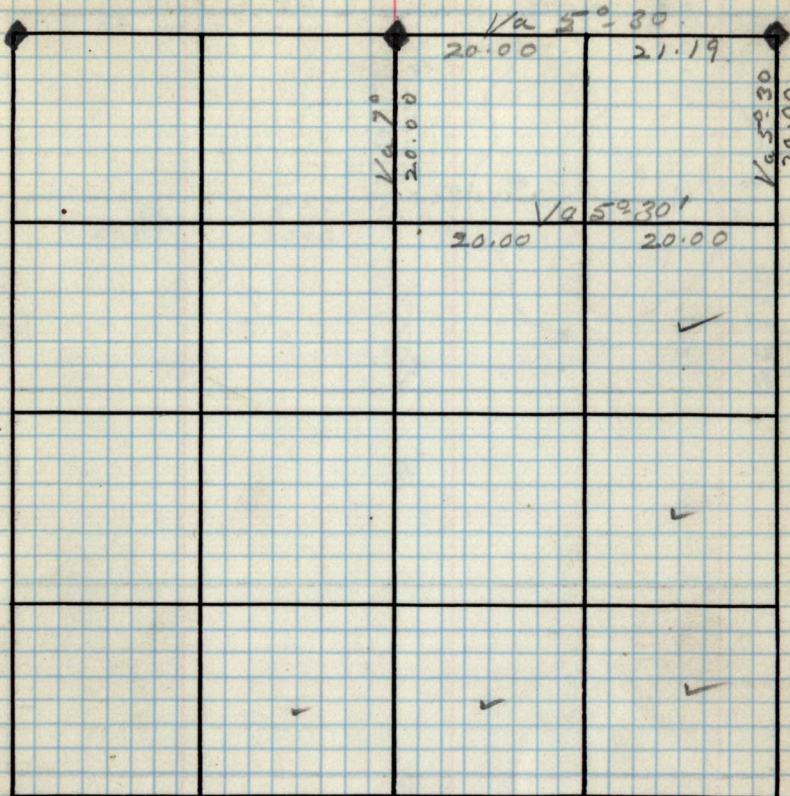




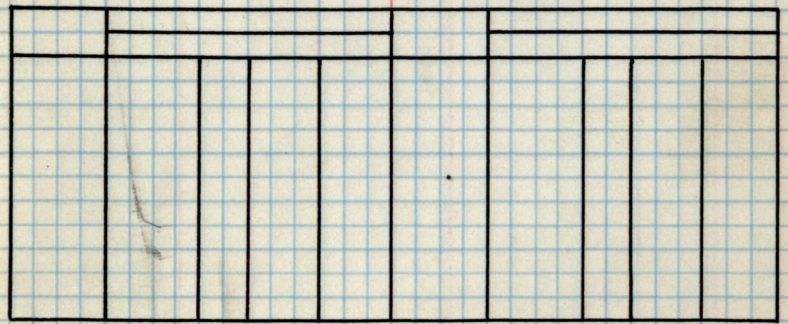
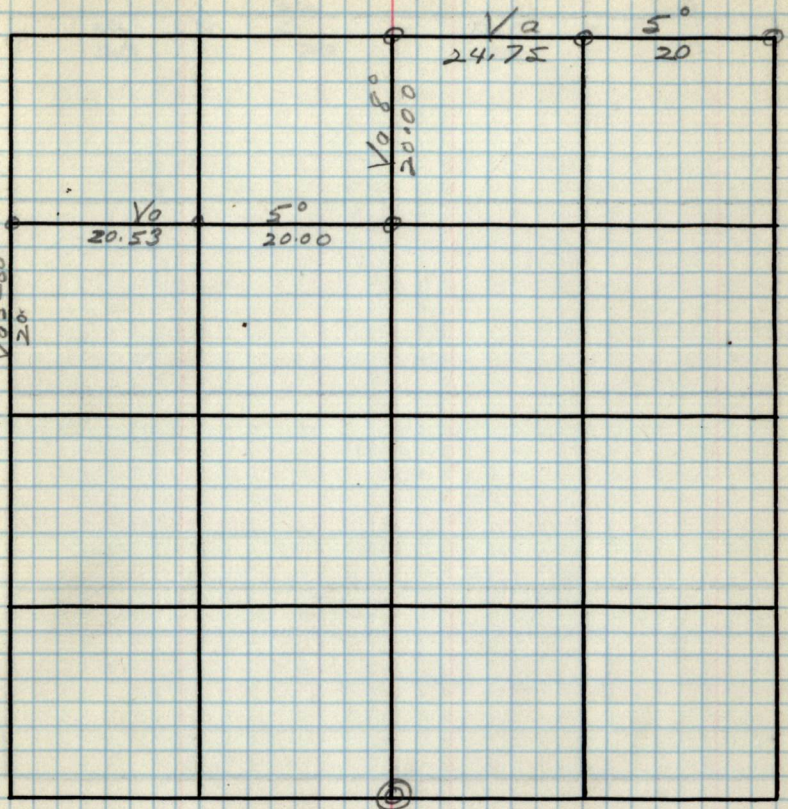
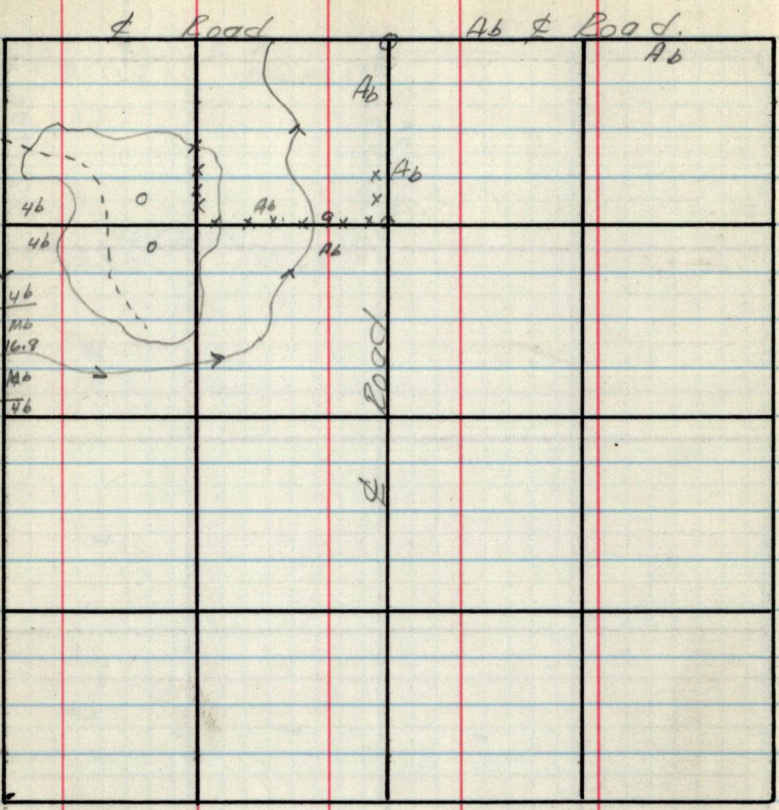
Co. Rd



21.















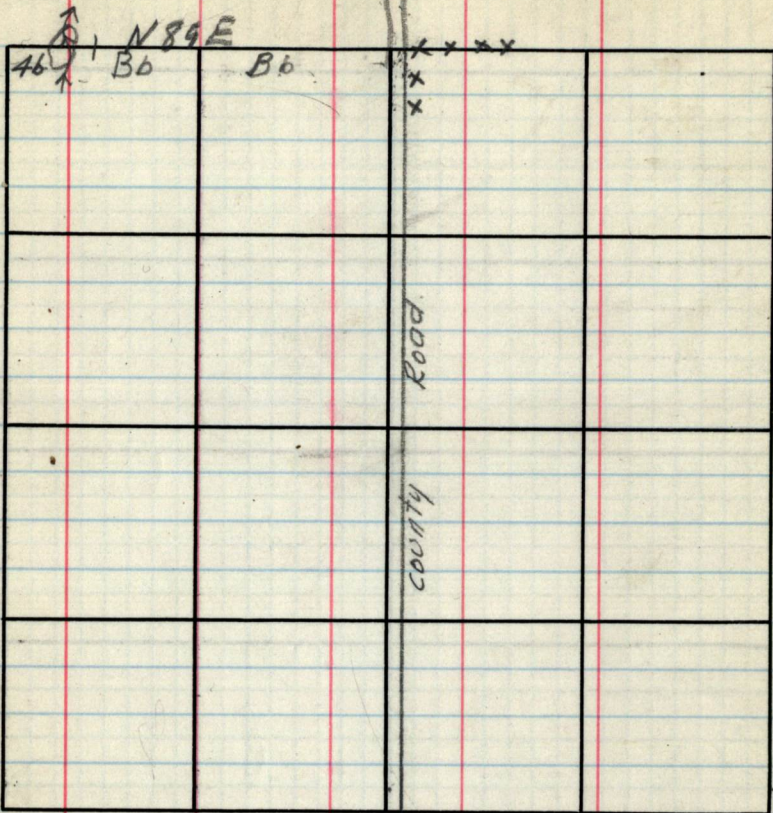










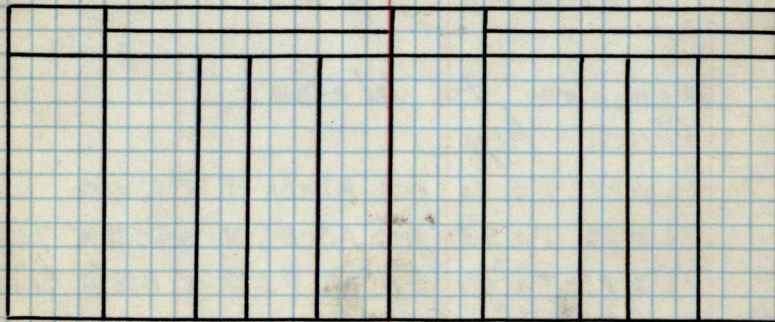
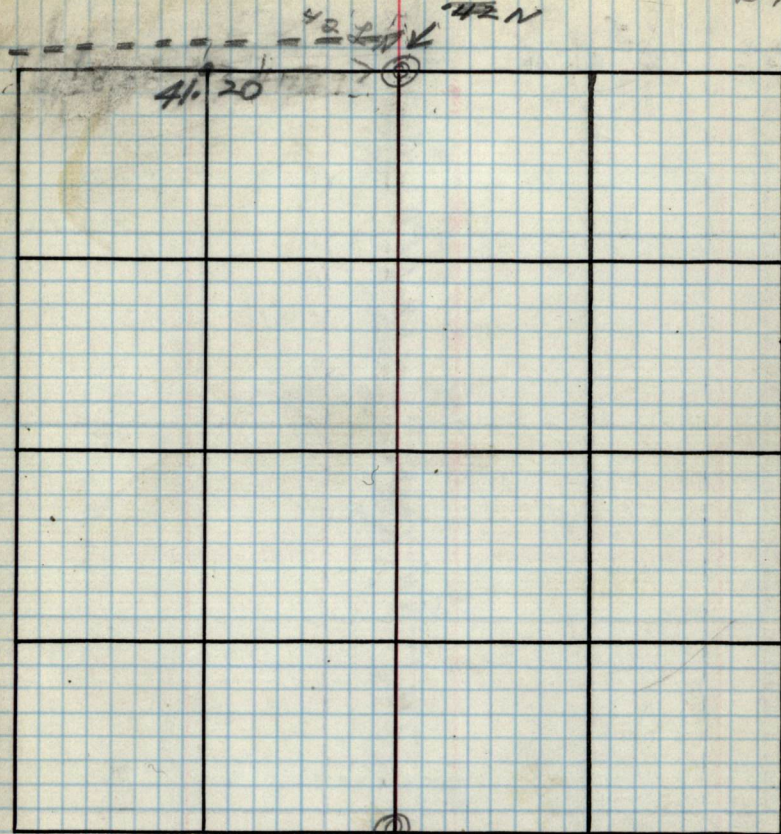
28 - Sec. 16  
 21.39 =  $\frac{1}{16}$  # 2

20.60 67N

90  
42N

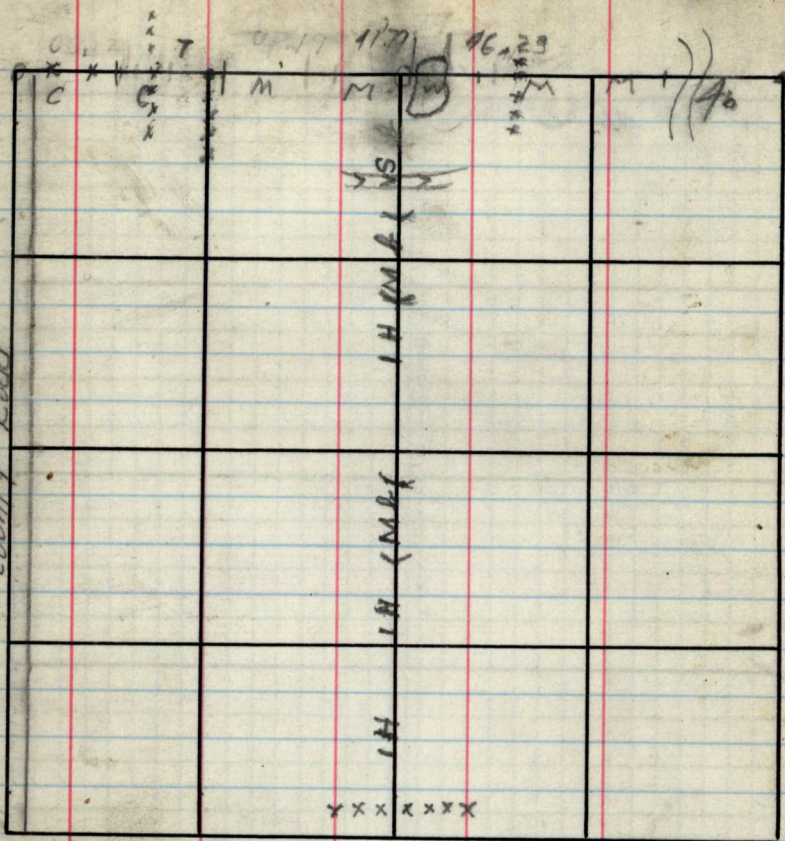
50  
50

27





county Road



Missed 1/4 cor 0.51 abs S

Measure to blazes.

Place tags.

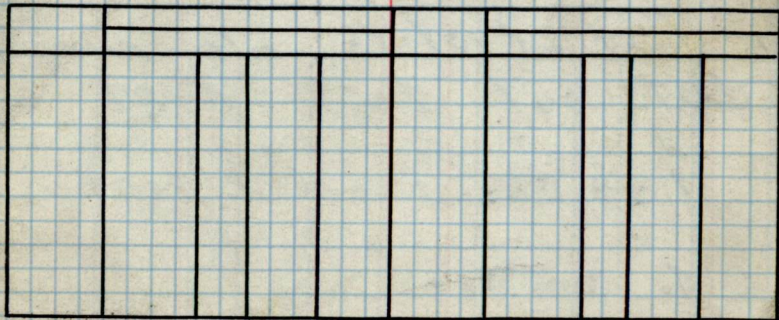
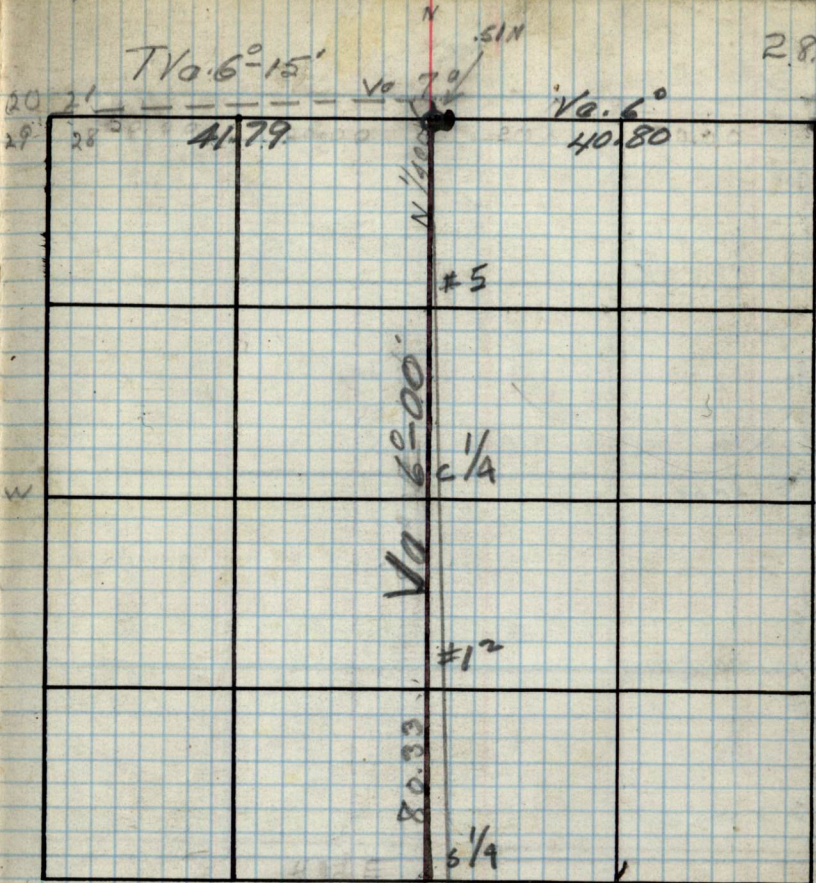
Place Tag on Birch N 1/4 Cor

Place Tag on ASPEN AT #5 1/2 Cor

Place Tag on ASPEN CEN 1/4 Cor

Place Tag on OCK AT #12 1/2 Cor

Place Tag on ASPEN S 1/4 Cor



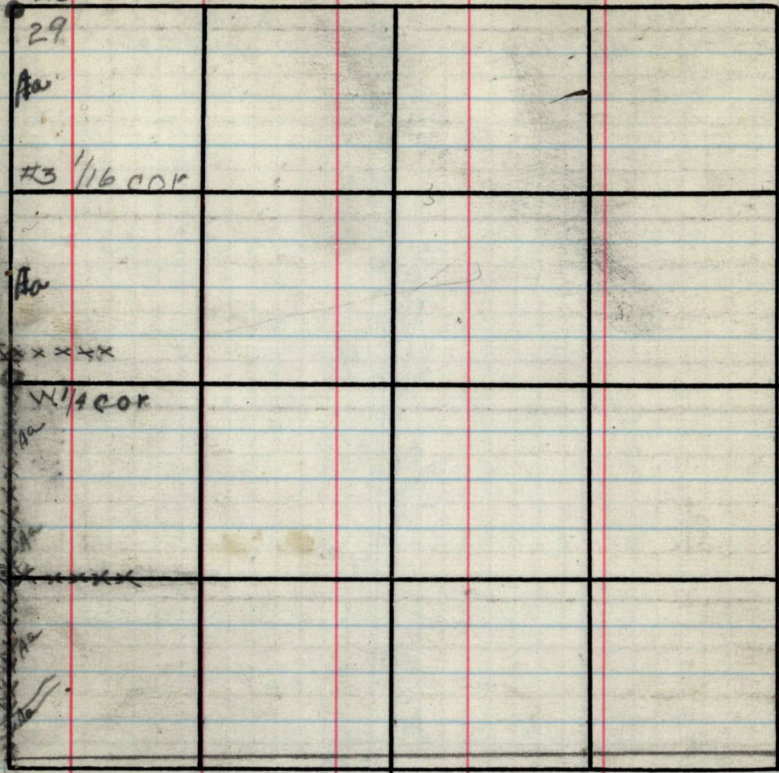


N

19 20  
30 29

W 3.01 chs  
#3 1/16 cor  
x x x x  
#1 1/4 cor

#1 1/4  
x x x x



1. start at state. also meas.  
dist out to  $\Phi$  Road  
! 1.88 chs from  $\Phi$  road  
To see cor

29

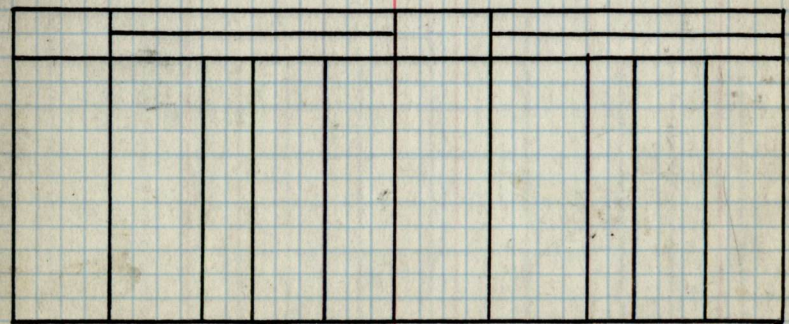
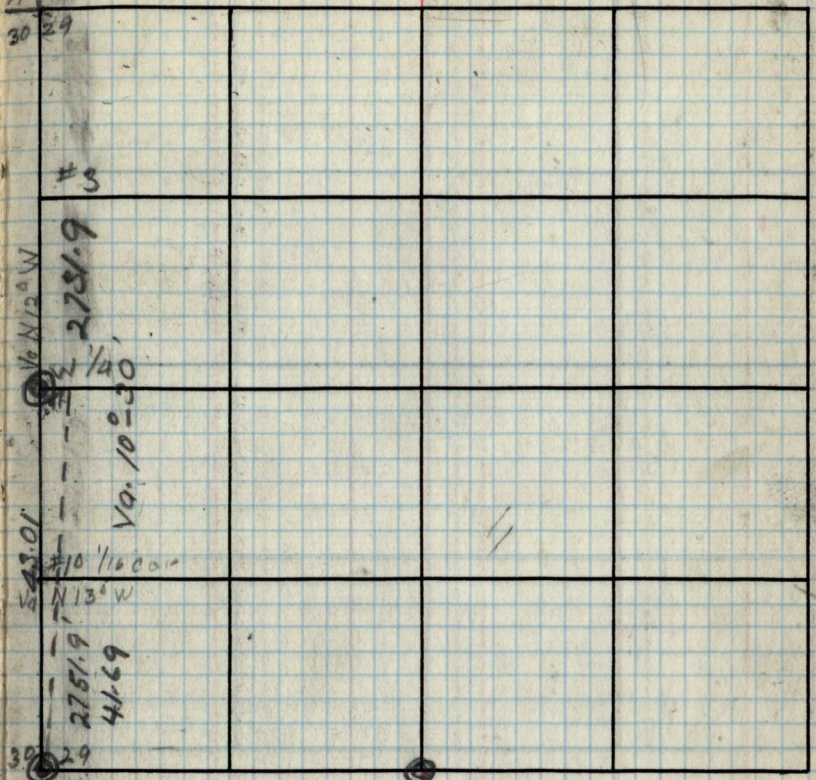
19 20  
30 29

#3  
6.121  
W 1/4 20

543.01  
#10 1/16 cor  
N 13° W  
2751.9  
41.69

30 29  
31 30

E



















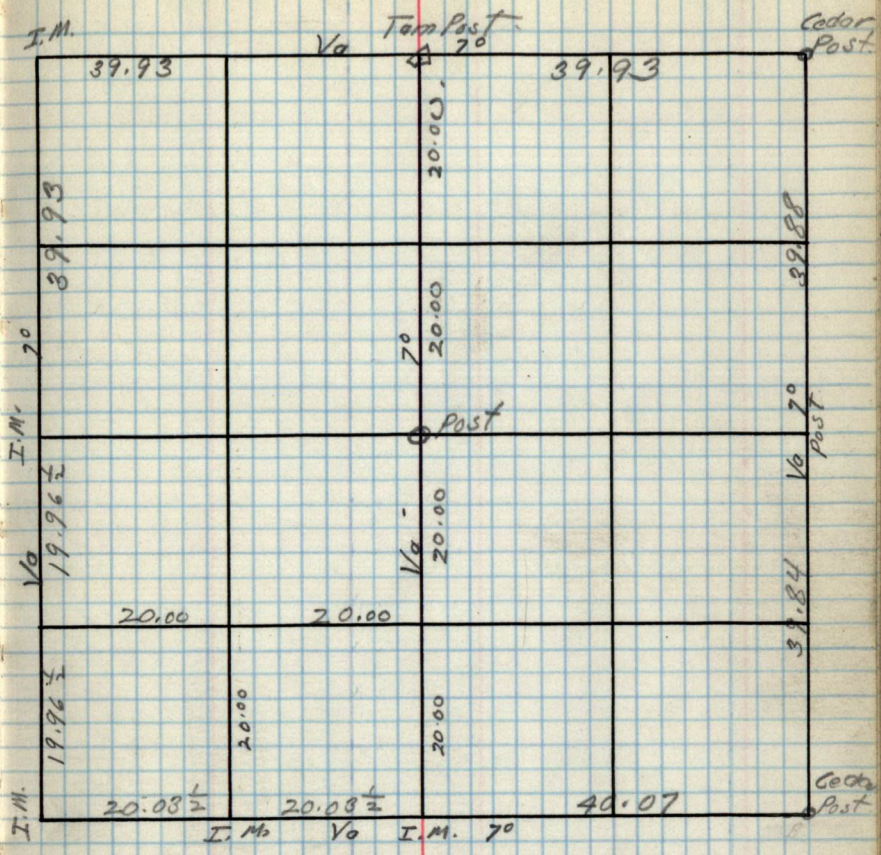
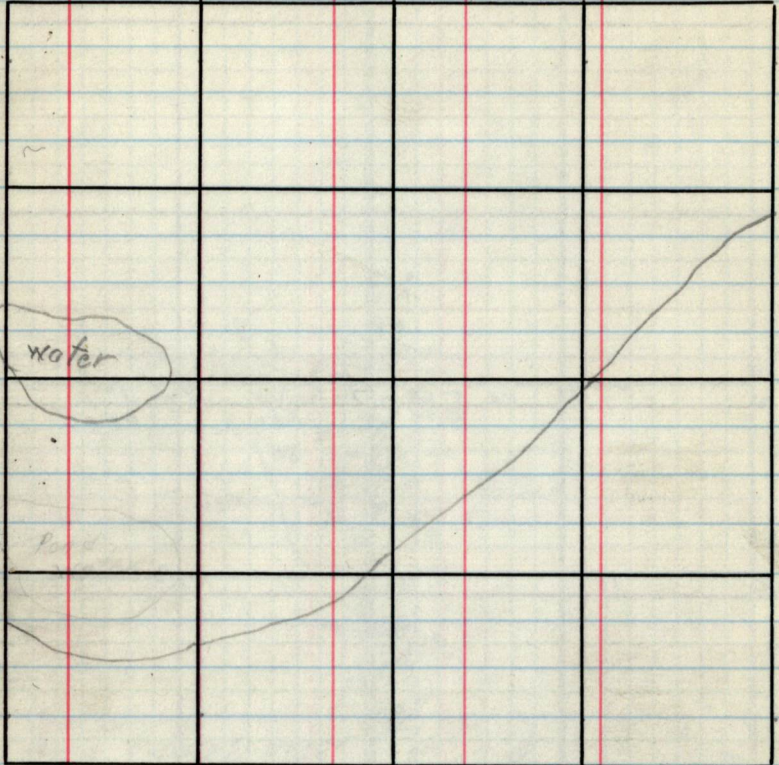










* 593/116	B. of Gil.	9"	559E	236	W 1/4	Aspen	8	N45W	58
N 1/4	farm	6	N80W	9	C 1/4	Spruce	8	N5E	33
* 25/30	W.P.	16	510W	9	26/25	W.P.	8	S20W	100
36/31	stump				33/36				
E 1/4	Spruce	5	558E	23					
35/36	"	5	N54E	21					
2/11	B-Gil	8	N3E	86					



Page 37-End  
are Blank