

FIELD
142-31

FRANKLIN BOOK
NEW YORK

ccc 9

EUGENE DIETZGEN CO.

DRAWING MATERIALS, MATHEMATICAL and
SURVEYING INSTRUMENTS

Chicago New York San Francisco New Orleans Pittsburg Toronto

Distances from Center of Roadway for Cross-Sectioning
Roadway 16 feet wide. Side Slopes 1 on 1.
For Single Track Embankment.

H	0	.1	.2	.3	.4	.5	.6	.7	.8	.9	H
0	8.0	8.1	8.2	8.3	8.4	8.5	8.6	8.7	8.8	8.9	0
1	9.0	9.1	9.2	9.3	9.4	9.5	9.6	9.7	9.8	9.9	1
2	10.0	10.1	10.2	10.3	10.4	10.5	10.6	10.7	10.8	10.9	2
3	11.0	11.1	11.2	11.3	11.4	11.5	11.6	11.7	11.8	11.9	3
4	12.0	12.1	12.2	12.3	12.4	12.5	12.6	12.7	12.8	12.9	4
5	13.0	13.1	13.2	13.3	13.4	13.5	13.6	13.7	13.8	13.9	5
6	14.0	14.1	14.2	14.3	14.4	14.5	14.6	14.7	14.8	14.9	6
7	15.0	15.1	15.2	15.3	15.4	15.5	15.6	15.7	15.8	15.9	7
8	16.0	16.1	16.2	16.3	16.4	16.5	16.6	16.7	16.8	16.9	8
9	17.0	17.1	17.2	17.3	17.4	17.5	17.6	17.7	17.8	17.9	9
10	18.0	18.1	18.2	18.3	18.4	18.5	18.6	18.7	18.8	18.9	10
11	19.0	19.1	19.2	19.3	19.4	19.5	19.6	19.7	19.8	19.9	11
12	20.0	20.1	20.2	20.3	20.4	20.5	20.6	20.7	20.8	20.9	12
13	21.0	21.1	21.2	21.3	21.4	21.5	21.6	21.7	21.8	21.9	13
14	22.0	22.1	22.2	22.3	22.4	22.5	22.6	22.7	22.8	22.9	14
15	23.0	23.1	23.2	23.3	23.4	23.5	23.6	23.7	23.8	23.9	15
16	24.0	24.1	24.2	24.3	24.4	24.5	24.6	24.7	24.8	24.9	16
17	25.0	25.1	25.2	25.3	25.4	25.5	25.6	25.7	25.8	25.9	17
18	26.0	26.1	26.2	26.3	26.4	26.5	26.6	26.7	26.8	26.9	18
19	27.0	27.1	27.2	27.3	27.4	27.5	27.6	27.7	27.8	27.9	19
20	28.0	28.1	28.2	28.3	28.4	28.5	28.6	28.7	28.8	28.9	20
21	29.0	29.1	29.2	29.3	29.4	29.5	29.6	29.7	29.8	29.9	21
22	30.0	30.1	30.2	30.3	30.4	30.5	30.6	30.7	30.8	30.9	22
23	31.0	31.1	31.2	31.3	31.4	31.5	31.6	31.7	31.8	31.9	23
24	32.0	32.1	32.2	32.3	32.4	32.5	32.6	32.7	32.8	32.9	24
25	33.0	33.1	33.2	33.3	33.4	33.5	33.6	33.7	33.8	33.9	25
26	34.0	34.1	34.2	34.3	34.4	34.5	34.6	34.7	34.8	34.9	26
27	35.0	35.1	35.2	35.3	35.4	35.5	35.6	35.7	35.8	35.9	27
28	36.0	36.1	36.2	36.3	36.4	36.5	36.6	36.7	36.8	36.9	28
29	37.0	37.1	37.2	37.3	37.4	37.5	37.6	37.7	37.8	37.9	29
30	38.0	38.1	38.2	38.3	38.4	38.5	38.6	38.7	38.8	38.9	30
31	39.0	39.1	39.2	39.3	39.4	39.5	39.6	39.7	39.8	39.9	31
32	40.0	40.1	40.2	40.3	40.4	40.5	40.6	40.7	40.8	40.9	32
33	41.0	41.1	41.2	41.3	41.4	41.5	41.6	41.7	41.8	41.9	33
34	42.0	42.1	42.2	42.3	42.4	42.5	42.6	42.7	42.8	42.9	34
35	43.0	43.1	43.2	43.3	43.4	43.5	43.6	43.7	43.8	43.9	35
36	44.0	44.1	44.2	44.3	44.4	44.5	44.6	44.7	44.8	44.9	36
37	45.0	45.1	45.2	45.3	45.4	45.5	45.6	45.7	45.8	45.9	37
38	46.0	46.1	46.2	46.3	46.4	46.5	46.6	46.7	46.8	46.9	38
39	47.0	47.1	47.2	47.3	47.4	47.5	47.6	47.7	47.8	47.9	39
40	48.0	48.1	48.2	48.3	48.4	48.5	48.6	48.7	48.8	48.9	40

Example—If point is 22.6 ft. above grade, how far should it be from center line to be a slope stake point? Ans. from Table 30.6. For same slopes but other widths of roadbed, correct above figures by one-half difference in width of roadbed; thus in example above, for 20 ft. roadbed distance will be $30.6 + (20 - 16) \div 2$ or 2 ft. added to 30.6 = 32.6. For slopes of 1 on 1½ see inside of back cover.

Copyright, 1914, by Eugene Dietzgen Co.

142-31

Scanned

July 12, 2012

Ronney

The paper stock of this book is made of a high grade 50% rag paper having a water resisting surface. This book is sewed with Bing Special Enamel Waterproof Thread.

Made in U. S. A.

Pages 1-4
are Blank

31/32
 6/5
 1/2

G.h. 0.2" I.M. 4 brass cap 8" high. Form 958 on 8" Aspen N20E
 10" W. oak. S. 41° E. 39 lbs
 50 lbs. B.T.s. 8" W. oak S. 54° W. 43 lbs.

1/10 6/5

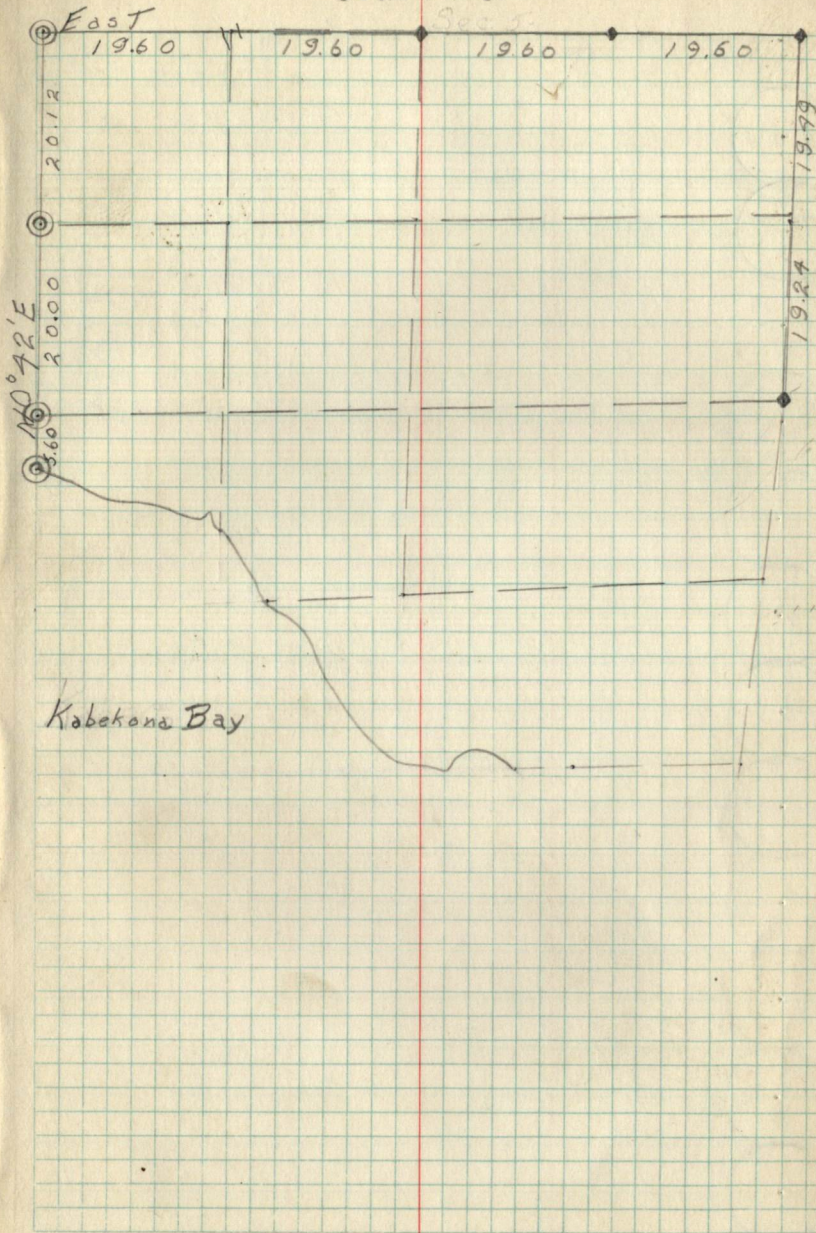
County Cox. 2" I.M. with Cap 10" high
 Form 458 on 8" R. Oak S. 8° W. 56 lbs.

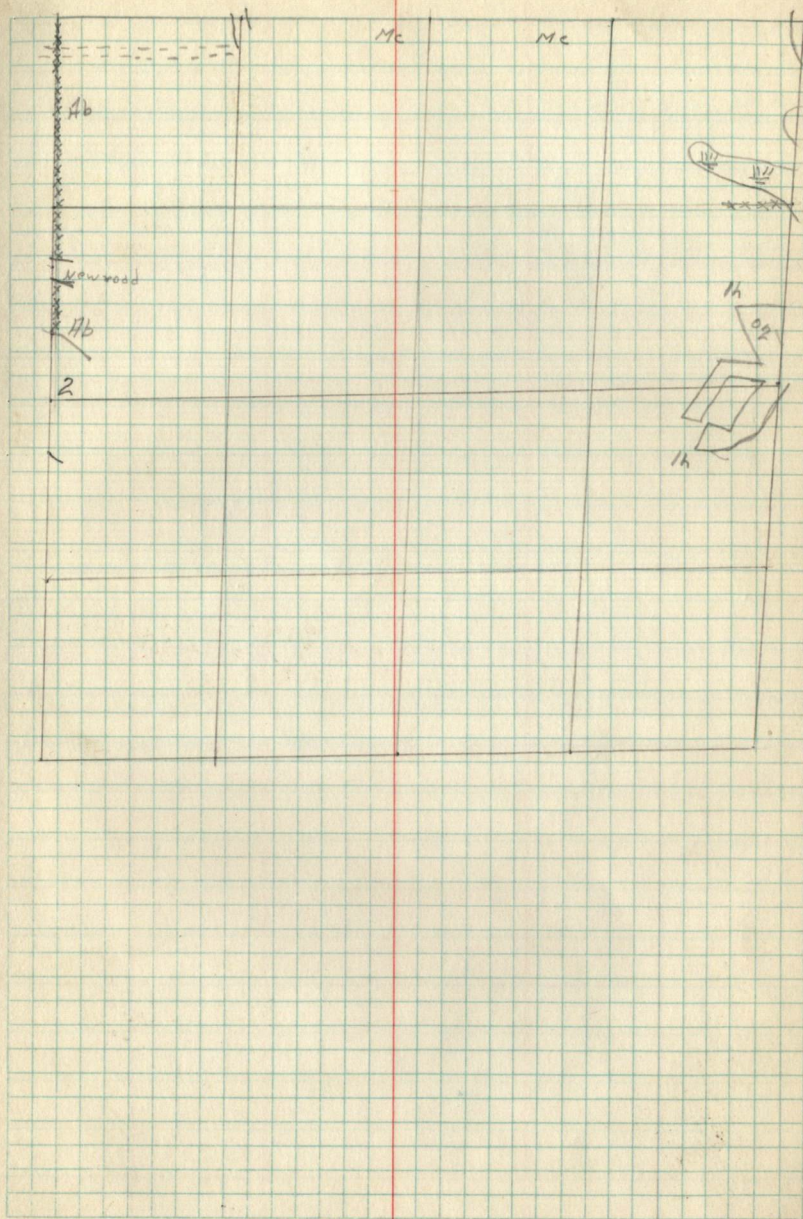
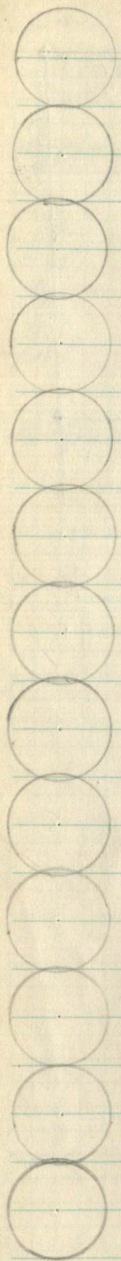
1/4
6/5

M.C
6/5

W/10 3/5

Sec. 5-192-31





Pages 6-17
are Blank

T192N 9.31W
12
18

1/6 #2
5.18

1/4
18

1/6 #1
5.18

T192N 9.31W
18
18/17

1/6 #7
5.18

1/4
18/17

1/6 #10
5.18

T192N 9.31W
18
18/20

1/6 #15
5.18

1/4
18
19

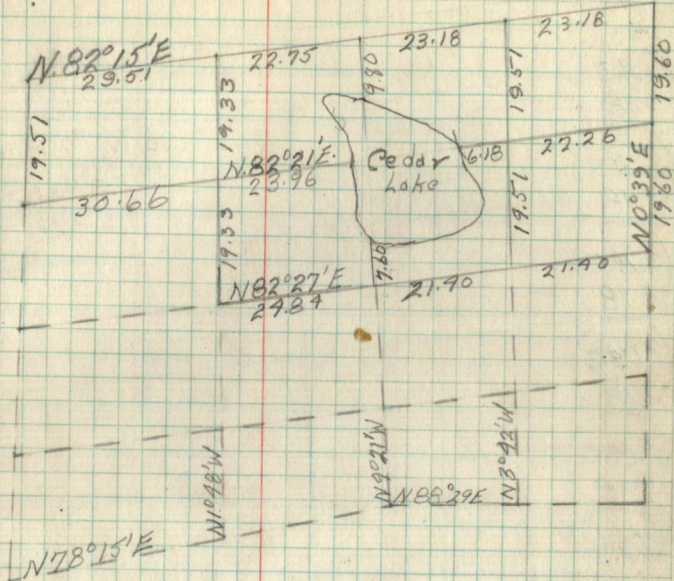
1/6 #16
5.18

T192N 9.31W
18
19

1/6 #10
5.18

Sec. 18

18



1/4
HB

1/6 #3
S.18

1/6 #4
S.18

S.M.C.
S.18

S.M.C.
S.18

S.M.C.
S.18

1/6 #6
S.18

1/6 #8
S.18

C/4
S.18

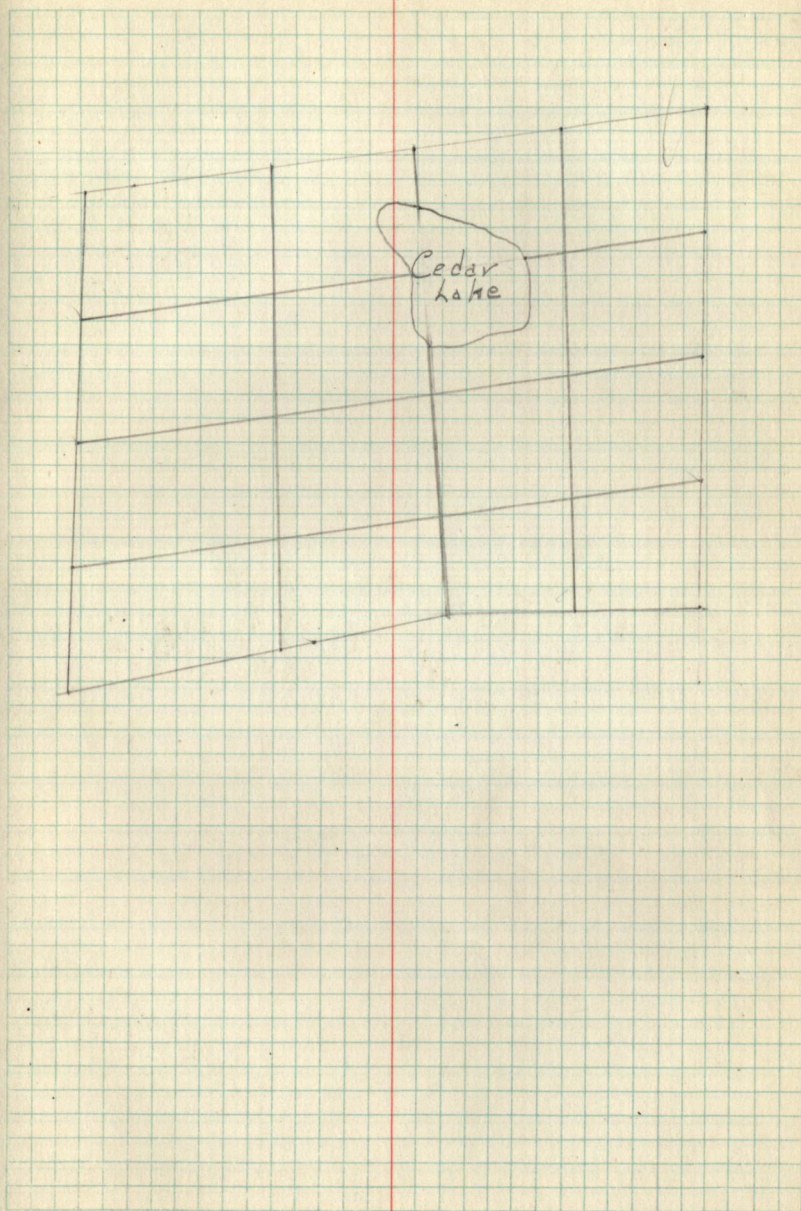
S.M.C.
S.18

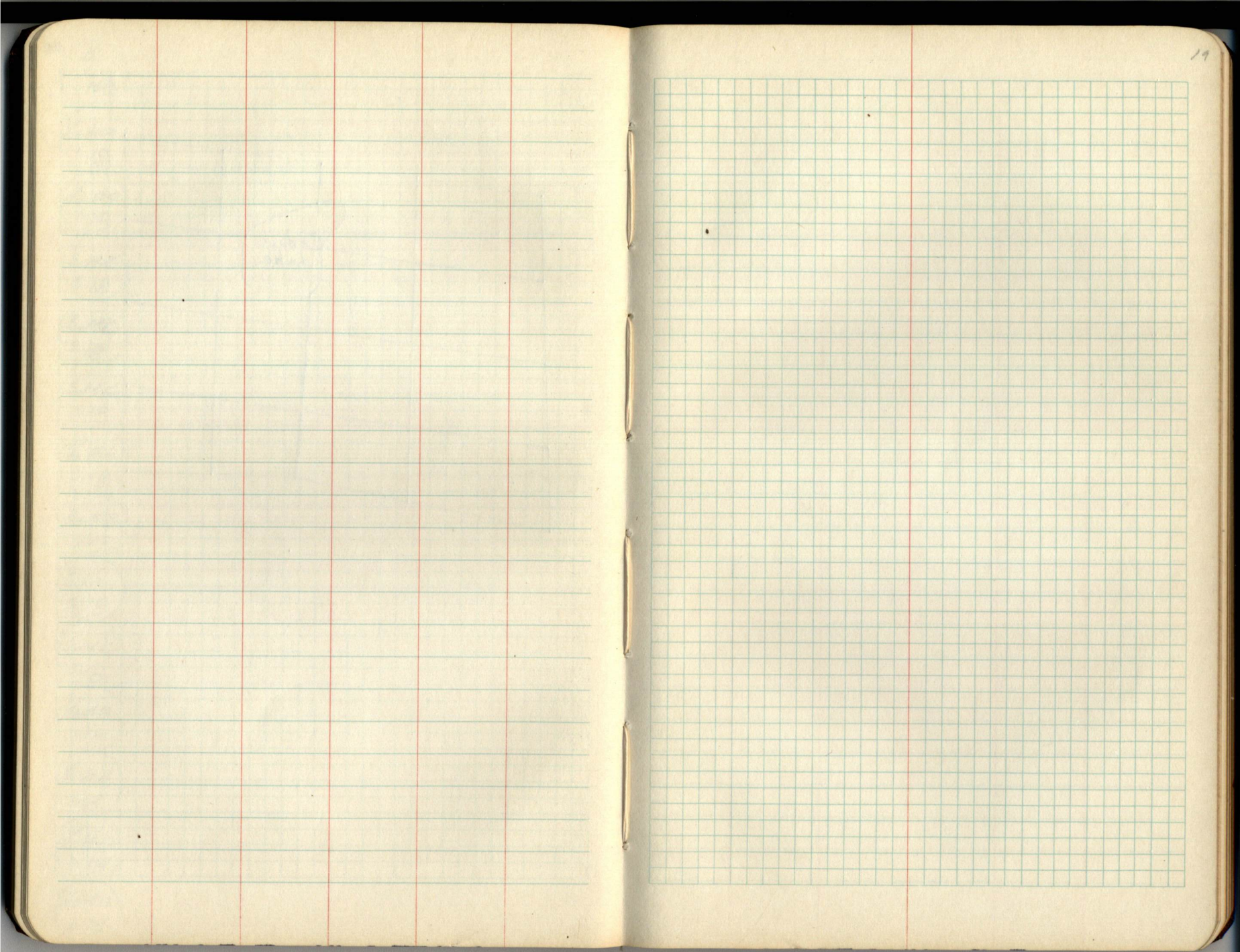
1/6 #9
S.18

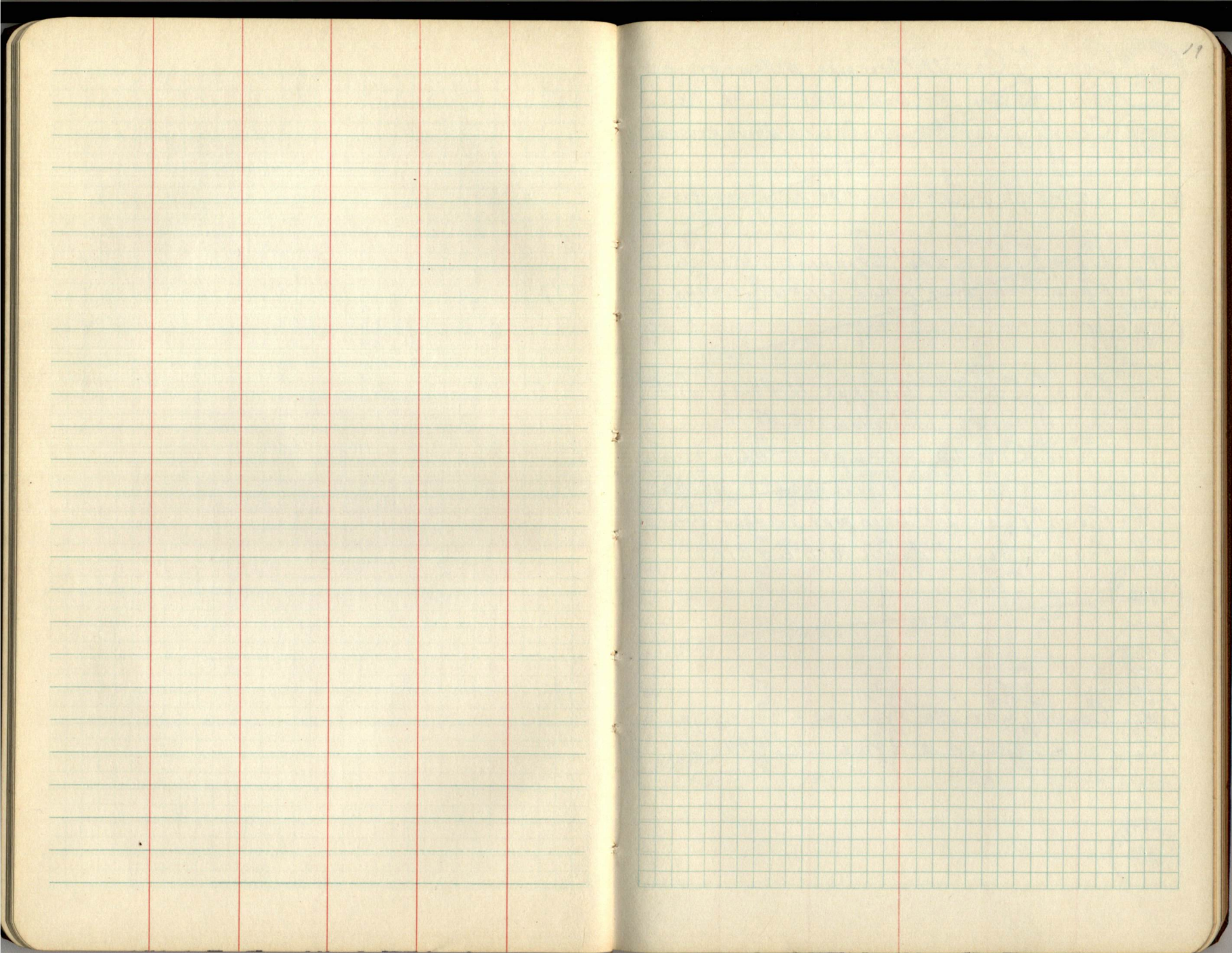
1/6 #11
S.18

1/6 #12
S.18

1/6 #13
S.18







PIAN 9312
1812
1920

County Cor. 2 1/4" Iron pipe 12" Above ground
Form 958 on 12" Oak N. 20° E. 381ks.

1/6 #2
520

County Cor. 2 1/4" Iron Pipe 14" Above ground

1/4 17
20

County Cor. 2 1/4" Iron Pipe 16" Above ground

1/6 #1
520

County Cor. 2 1/4" Iron pipe 6" High
Form 958 on 10" R. Pine N. 10° W. 1291ks.

PIAN 9312
1716
2021

1/6 #17
520

County Cor. 2 1/4" Iron pipe 12" Above ground.
Form 958 on 5" J. Pine N. 29° E. 951ks.

1/4
20/21

County Cor. 2 1/4" Iron pipe 15" Above ground
Form 958 on 6" Aspen 556° E 281ks

1/6 #14
520

County Cor. 2 1/4" Iron pipe 12" Above ground
Form 958 on 4" Aspen N. 28° E 81ks

PIAN 9312
2021
2028

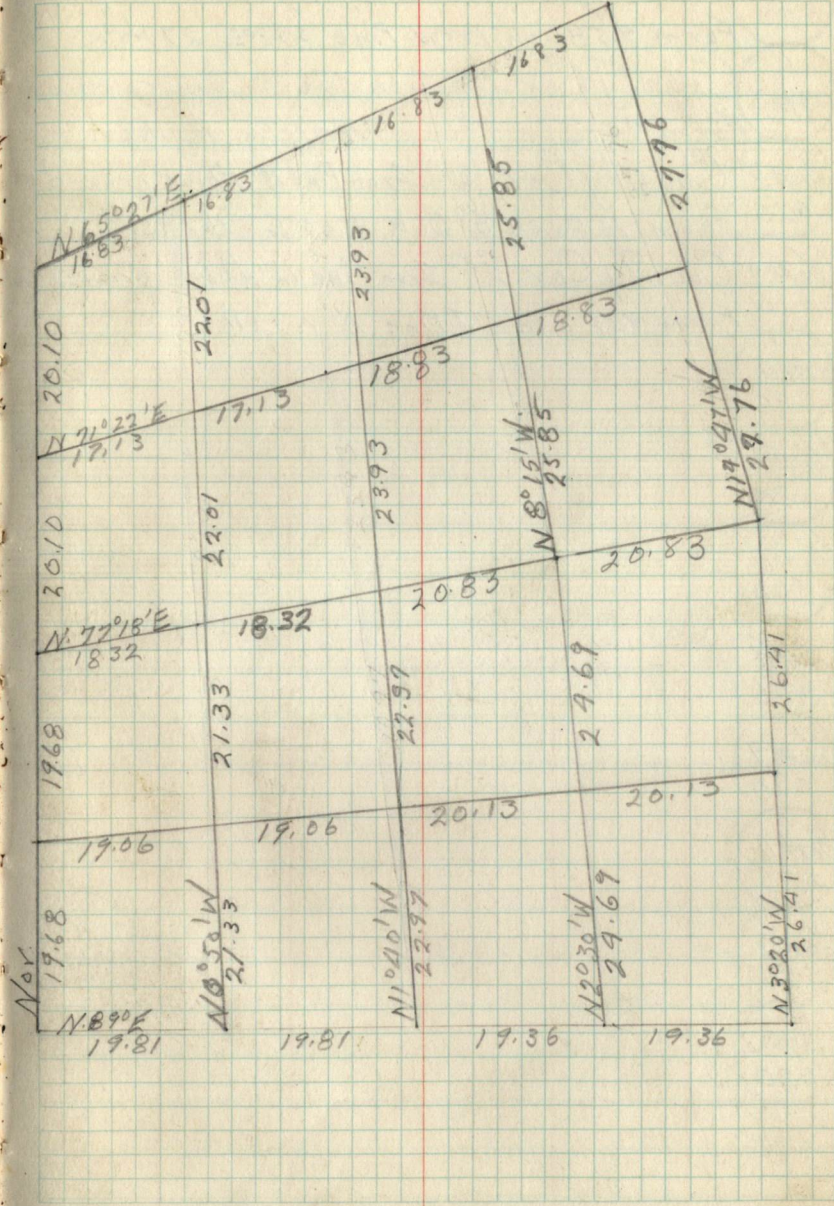
1/6 #15
520

1/4 20
29

County Cor. 2 1/4" Iron pipe 6" Above ground
Form 958 on 12" R. Pine 520° E. 971ks.

1/6 #16
520

PIAN 9312
1116
3029



1/6 #10 County Cor. 2 1/4" Iron pipe 8" Above ground
5.20 Form 958a on 12" W. Pine 5520E. 27 lbs.

1/6 #2 County Cor. 2 1/4" Iron pipe 12" Above ground
15.20 Form 958a on 5" Oak N41°E. 115 lbs.

1/6 #3 County Cor. 2 1/4" Iron Pipe 12" Above ground
5.20 Form 958a on 3" Oak N. 63°E. 16 lbs

1/6 #4 County Cor. 2 1/4" Iron Pipe 12" Above ground
5.20 Form 958a on 2" J. Pine Nor. 2 lbs.

1/6 #5
5.20

1/6 #6
5.20

1/6 #8
5.20

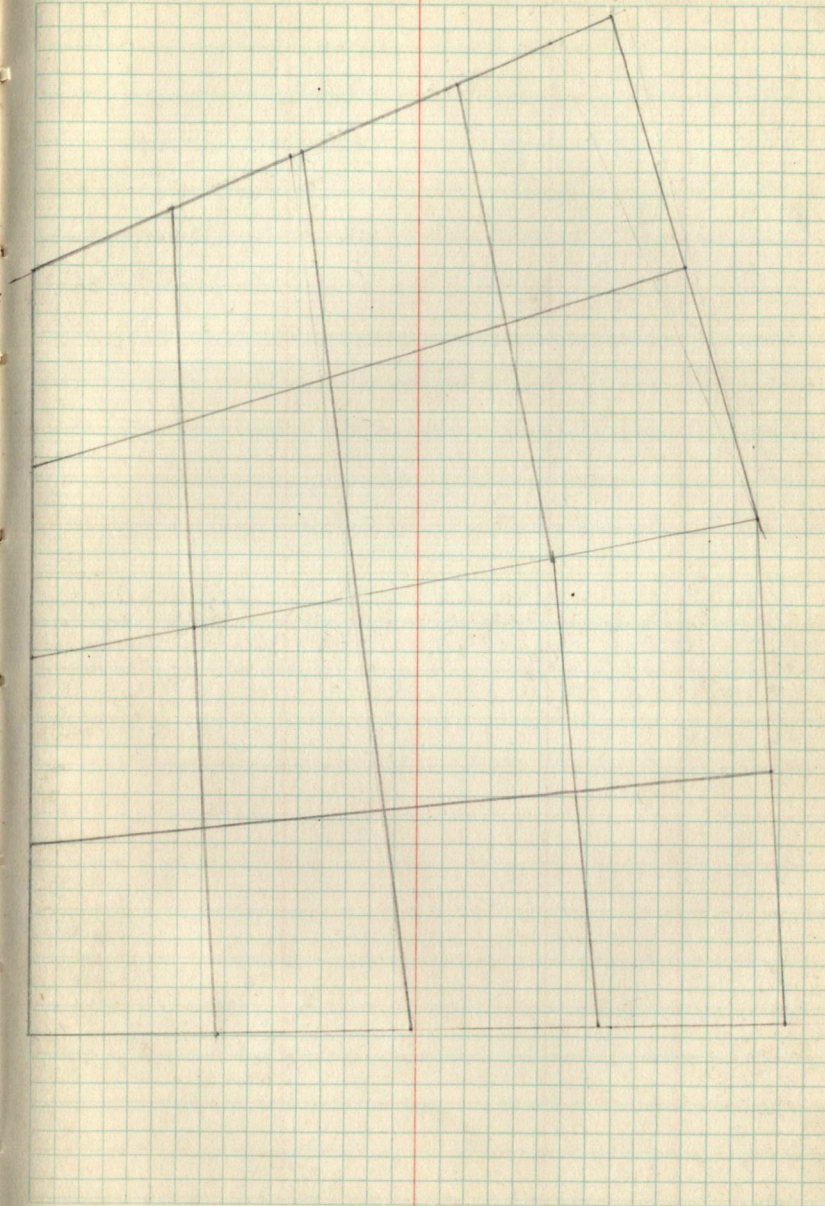
1/6 #7
5.20

1/6 #9
5.20

1/6 #11
5.20

1/6 #12
5.20

1/6 #13
5.20



21

Pages 21-End
are Blank