

T142N R31W

1875

FIELD BOOK NO. 107

LINEAL SURVEY

F. S.

MISC.

DIXON  
MINING

—————

MINING

TRANSIT BOOK

No. 422F

—————

ccc 8



# EUGENE DIETZGEN CO.

DRAWING MATERIALS, MATHEMATICAL and SURVEYING INSTRUMENTS

Chicago New York San Francisco New Orleans Pittsburg Toronto

## DISTANCES FROM CENTER OF ROADWAY FOR CROSS-SECTIONING.

Roadway 16 feet wide. Side Slopes 1 on 1.

For Single Track Embankment.

H	0	.1	.2	.3	.4	.5	.6	.7	.8	.9	H
0	8.0	8.1	8.2	8.3	8.4	8.5	8.6	8.7	8.8	8.9	0
1	9.0	9.1	9.2	9.3	9.4	9.5	9.6	9.7	9.8	9.9	1
2	10.0	10.1	10.2	10.3	10.4	10.5	10.6	10.7	10.8	10.9	2
3	11.0	11.1	11.2	11.3	11.4	11.5	11.6	11.7	11.8	11.9	3
4	12.0	12.1	12.2	12.3	12.4	12.5	12.6	12.7	12.8	12.9	4
5	13.0	13.1	13.2	13.3	13.4	13.5	13.6	13.7	13.8	13.9	5
6	14.0	14.1	14.2	14.3	14.4	14.5	14.6	14.7	14.8	14.9	6
7	15.0	15.1	15.2	15.3	15.4	15.5	15.6	15.7	15.8	15.9	7
8	16.0	16.1	16.2	16.3	16.4	16.5	16.6	16.7	16.8	16.9	8
9	17.0	17.1	17.2	17.3	17.4	17.5	17.6	17.7	17.8	17.9	9
10	18.0	18.1	18.2	18.3	18.4	18.5	18.6	18.7	18.8	18.9	10
11	19.0	19.1	19.2	19.3	19.4	19.5	19.6	19.7	19.8	19.9	11
12	20.0	20.1	20.2	20.3	20.4	20.5	20.6	20.7	20.8	20.9	12
13	21.0	21.1	21.2	21.3	21.4	21.5	21.6	21.7	21.8	21.9	13
14	22.0	22.1	22.2	22.3	22.4	22.5	22.6	22.7	22.8	22.9	14
15	23.0	23.1	23.2	23.3	23.4	23.5	23.6	23.7	23.8	23.9	15
16	24.0	24.1	24.2	24.3	24.4	24.5	24.6	24.7	24.8	24.9	16
17	25.0	25.1	25.2	25.3	25.4	25.5	25.6	25.7	25.8	25.9	17
18	26.0	26.1	26.2	26.3	26.4	26.5	26.6	26.7	26.8	26.9	18
19	27.0	27.1	27.2	27.3	27.4	27.5	27.6	27.7	27.8	27.9	19
20	28.0	28.1	28.2	28.3	28.4	28.5	28.6	28.7	28.8	28.9	20
21	29.0	29.1	29.2	29.3	29.4	29.5	29.6	29.7	29.8	29.9	21
22	30.0	30.1	30.2	30.3	30.4	30.5	30.6	30.7	30.8	30.9	22
23	31.0	31.1	31.2	31.3	31.4	31.5	31.6	31.7	31.8	31.9	23
24	32.0	32.1	32.2	32.3	32.4	32.5	32.6	32.7	32.8	32.9	24
25	33.0	33.1	33.2	33.3	33.4	33.5	33.6	33.7	33.8	33.9	25
26	34.0	34.1	34.2	34.3	34.4	34.5	34.6	34.7	34.8	34.9	26
27	35.0	35.1	35.2	35.3	35.4	35.5	35.6	35.7	35.8	35.9	27
28	36.0	36.1	36.2	36.3	36.4	36.5	36.6	36.7	36.8	36.9	28
29	37.0	37.1	37.2	37.3	37.4	37.5	37.6	37.7	37.8	37.9	29
30	38.0	38.1	38.2	38.3	38.4	38.5	38.6	38.7	38.8	38.9	30
31	39.0	39.1	39.2	39.3	39.4	39.5	39.6	39.7	39.8	39.9	31
32	40.0	40.1	40.2	40.3	40.4	40.5	40.6	40.7	40.8	40.9	32
33	41.0	41.1	41.2	41.3	41.4	41.5	41.6	41.7	41.8	41.9	33
34	42.0	42.1	42.2	42.3	42.4	42.5	42.6	42.7	42.8	42.9	34
35	43.0	43.1	43.2	43.3	43.4	43.5	43.6	43.7	43.8	43.9	35
36	44.0	44.1	44.2	44.3	44.4	44.5	44.6	44.7	44.8	44.9	36
37	45.0	45.1	45.2	45.3	45.4	45.5	45.6	45.7	45.8	45.9	37
38	46.0	46.1	46.2	46.3	46.4	46.5	46.6	46.7	46.8	46.9	38
39	47.0	47.1	47.2	47.3	47.4	47.5	47.6	47.7	47.8	47.9	39
40	48.0	48.1	48.2	48.3	48.4	48.5	48.6	48.7	48.8	48.9	40

**Example**—If point is 22.6 ft. above grade, how far should it be from center line to be a slope stake point? Ans. from Table 30.6. For same slopes but other widths of roadbed, correct above figures by one-half difference in width of roadbed; thus in example above, for 20 ft. roadbed distance will be  $30.6 + (20 - 16) \div 2$  or 2 ft. added to  $30.6 = 32.6$ . For slopes of 1 on 1½ see inside of back cover.

Copyright, 1914, by Eugene Dietzgen Co.

142-31

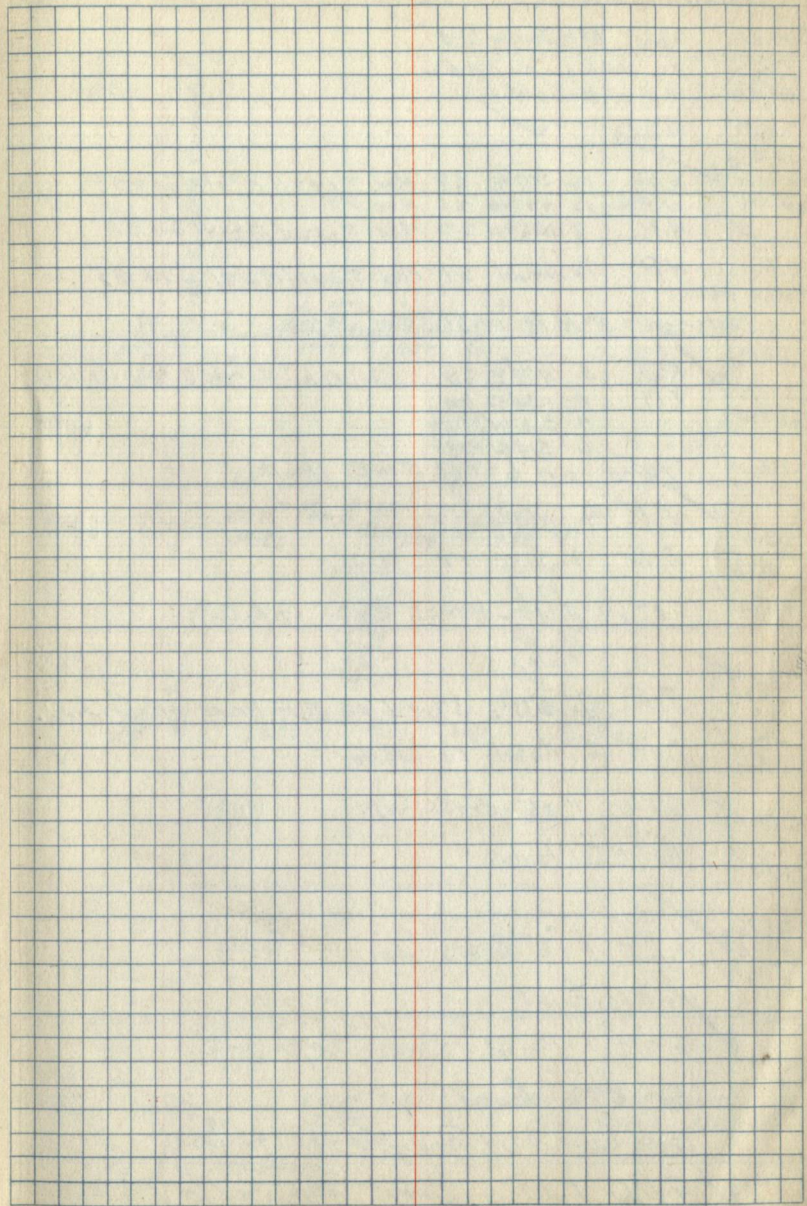
Scanned  
July 12, 2012

Ranney



INDEX

T.142 R31  
SEC. PAGE  
13 1  
23 1  
14 3  
11 5



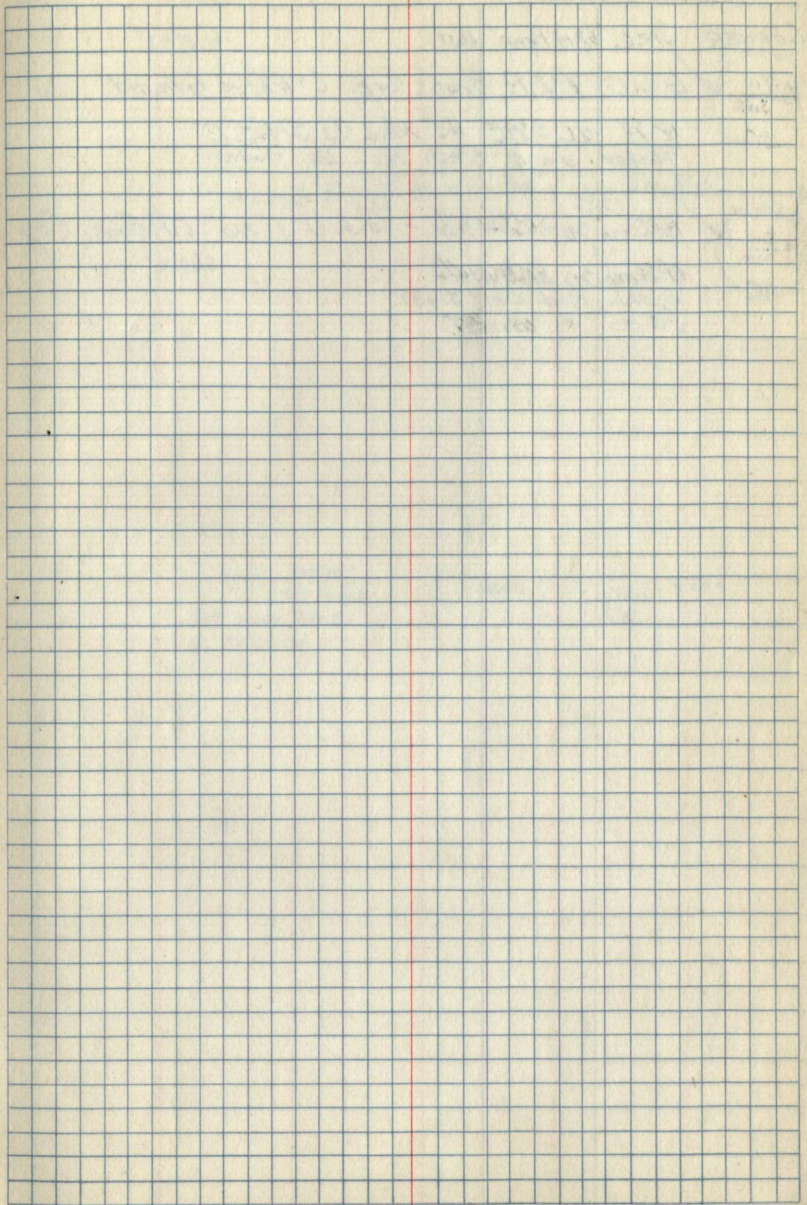






BEARING TREES

CORNER	SPEC.	D.B.H.	BEAR	Dist. -
S 12 S 13	✓ No B.T.s	ON 1/64	Cor.	Poster on 5" Aspen - 577W 10 1/2 - 1/4
AP 2 126	Corner is	997	chs. W. of 1/4	secs. 12 + 13
	G.L.O.	1" x 6"	Brass Cap.	✓
W 6 S 17 S 13	✓ G.L.O.	1" x 6"	Brass Cap.	
	W. Pine	6" No 8W 46	Mkd. W 1/6	S 12 B.T. ✓
	Poster -	on W.P.	↵	

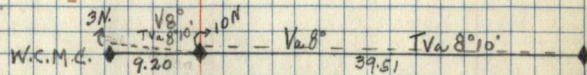




## BEARING TREES

CORNER	SPEC.	DBH	BEAR.	DIST.	DATE
1/4 S11 1/4 S14 1917	✓ G.L.O.	1"	I.P.	Brass Cap. 6" Above Ground	6/18/35
	N.P.	26.589E	45	Mkd. 1/4 S14 B.T.	
	Poster	on 4" Birch	N-E	7-1ks.	
T1/4 N R21 W WC S11 MC S14 1917	✓ N.P. Stump	20	568°W	5 1/2 - G.L.O. 1" x 6" I.P. Brass Cap.	6/18/35
	N.P. Stump	27	N30°W	14 1/2	
	1st Stump	Mkd. CMC	S14 BT		
	2nd "	"	S11 BT		

S. 14 - T142N., R31W.



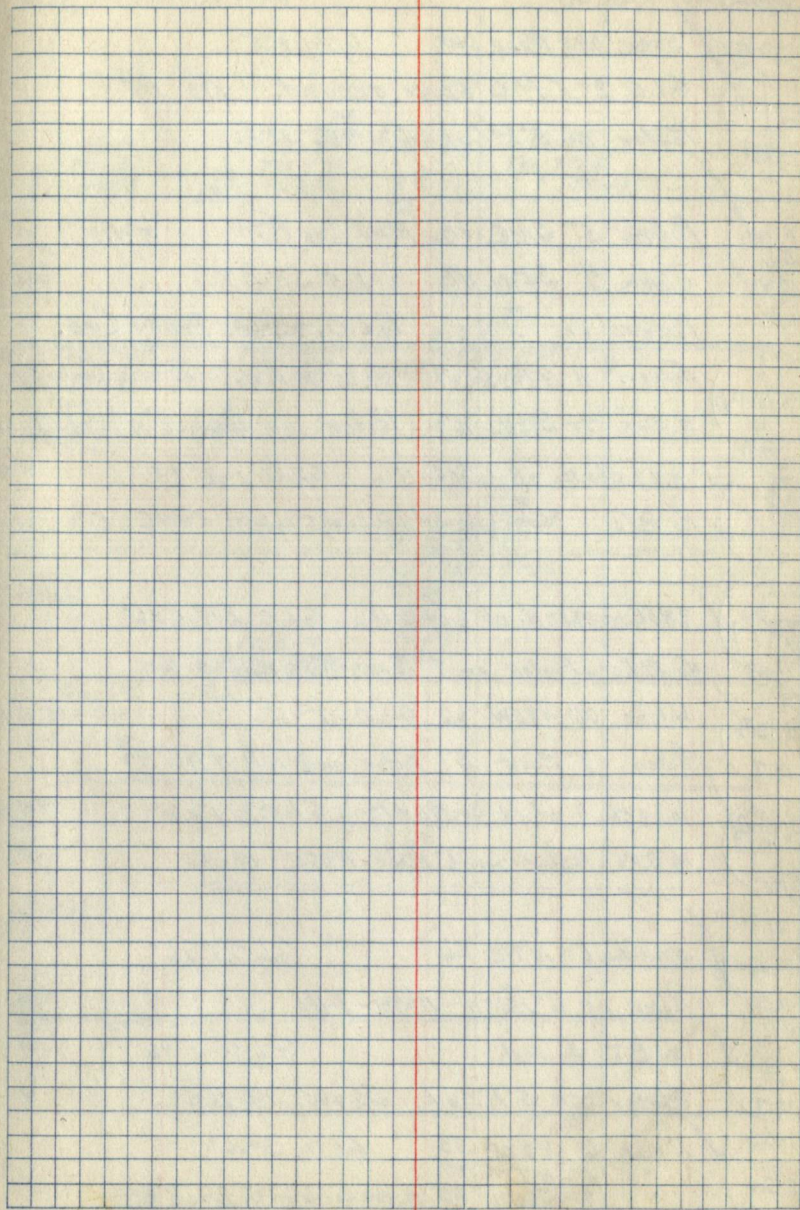
W.C.M.C.  
not found.  
Set temp. stake  
@ 38.00 chs.

18.00

Temp  
1/6

20.00





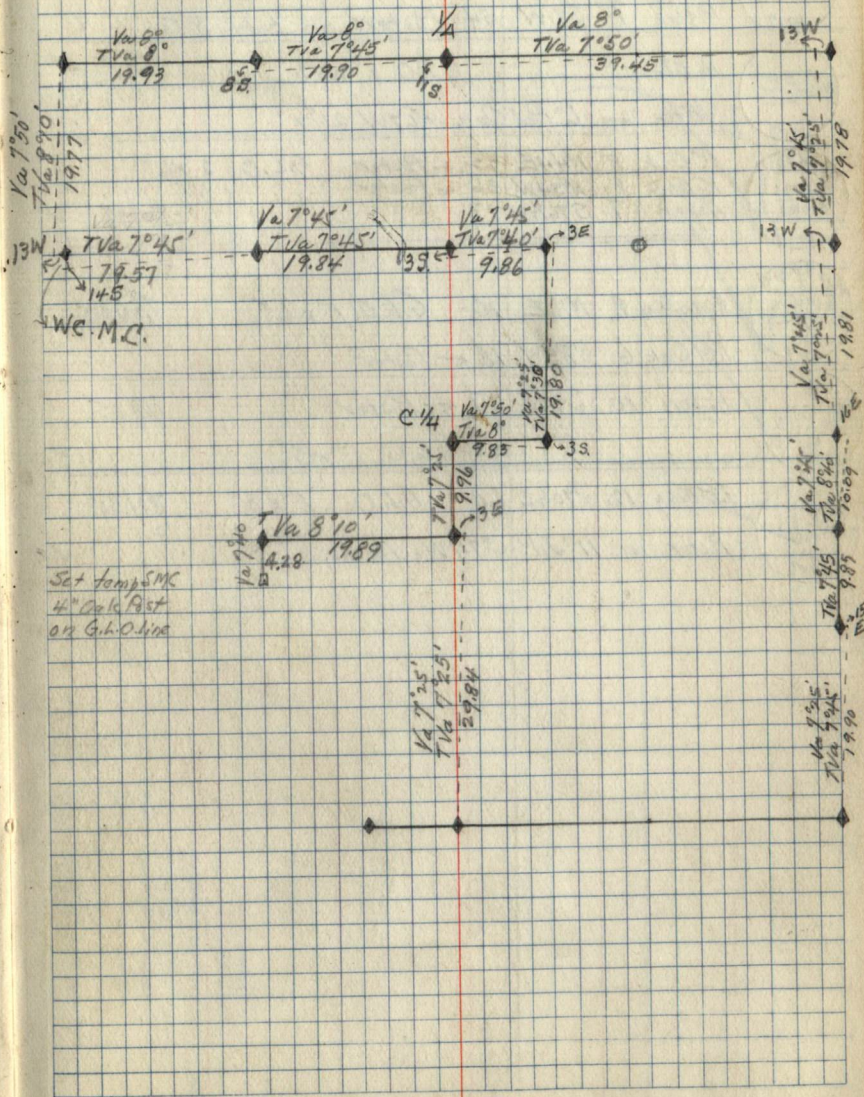
/



## BEARING/TREES

CORNER	SPEC.	D.B.H	BEAR	DIST.	DATE	REMARKS
1 C 64 C 1933	G.L.O. 2" I.P.	6"	Above ground	No B.T.s.	6/19/35	✓
	Poster on 5" R. Oak	52 1/4 E		13 ks		
14 15 1933	R. Oak 5"	S16E	12	Mkt. S11 BT.	6/21/35	✓
	R. Oak 9"	S47W	11 1/2	" L5 S11 BT.		✓
	Poster on 5	G.L.O. 2" x 6"		Brass Cap.		
1 C1/4 S11	Aspen 8" N72W	7		G.L.O. 1" x 6"	Brass Cap. 6/2/35	✓
	R. Oak 70 S88E	47		Poster on Aspen	8" N72W-7	✓
1917						
APR TR 1588 611 1917				9.83 chs. E. of C1/4 S. 11	G.L.O. 1" x 6" I.P.	6/2/35
	No B.T.s.			Poster on 30" N.P. snag	5' height. S44E 5 1/2 lbs.	
1 S11				9.83 E. + 19.80 N. of C1/4 S. 11	G.L.O. I.P. 1" x 6"	6/24/35
APR TR 1588 1917				No B.T.s.	Poster on 7" Birch	N72E 15 lbs. ✓
S16 811 S16 1917				W. Pine 26"	N85W 66 G.L.O. 1" x 6"	6/24/35
	Aspen 7"	East 37		Poster on 4" N.P.	N71W 8 1/2	✓
APR TR 1231 1917				10.09 chs. S. of 1/4 Secs. 11+12	G.L.O. 1" x 6"	6/25/35
	No B.T.s.			Poster on 6" Aspen	N35E 14 lbs. ✓	
14 S11 Str 1917				R. Oak Stump 6"	N77E 26 G.L.O. 1" x 6"	6/25/35
	Poster on 6" Aspen	N27W		7 lbs.		✓
N1/16 811 Str 1917				No B.T.s. found.	G.L.O. 1" x 6"	6/25/35
	Poster on 5" R. Oak	S24W		19 lbs.		✓
THUR R31W 52 151 S11 Str 1917				R. Oak 6"	N20E 33 G.L.O. 2" x 6"	✓
	"	5		N7W 25		✓
	"	7		S60W 43	Poster on 6" R.O.	N20E 33 lbs. ✓
	"	6		S64E 36	" " 7" " S60W 43	6/25/35

S. 11, T. 142 N., R. 31 W.





## BEARING TREES

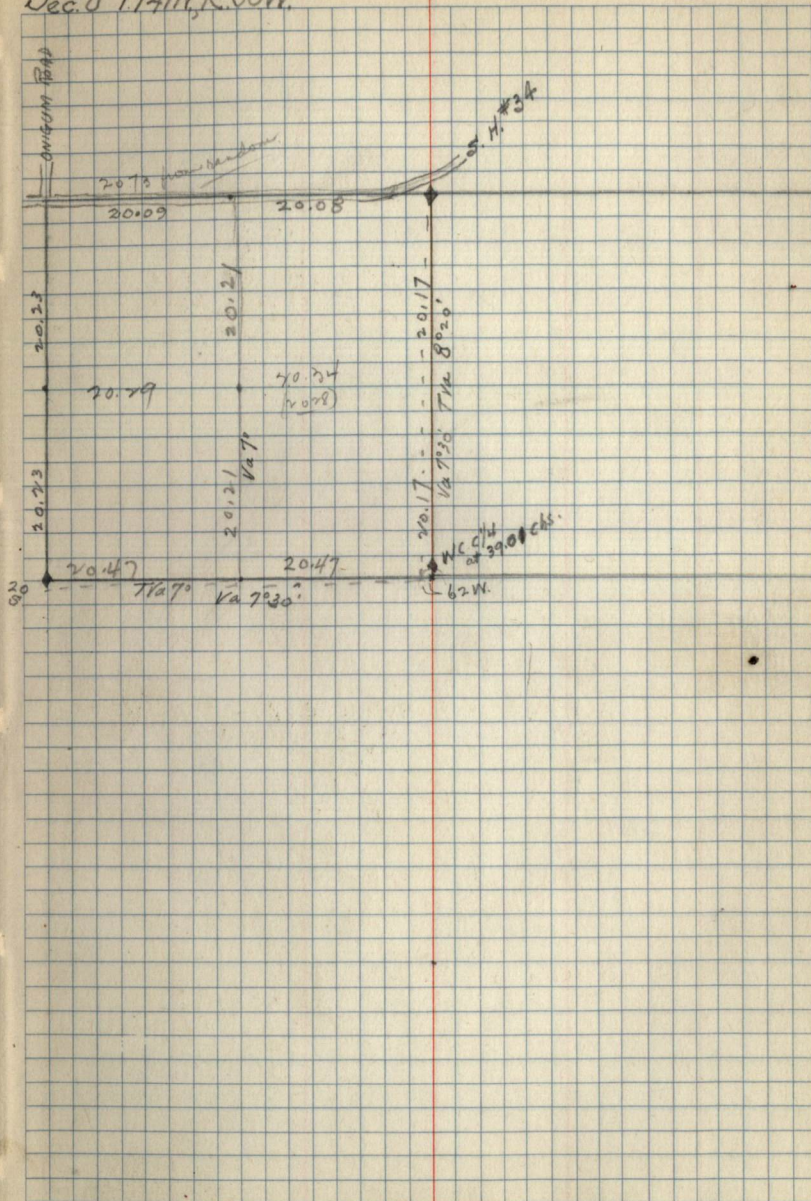
CORNER	SPEC.	DBH	BEAR.	DIST.		
NE 32 S11	Aspen	9"	N77W	29	G.L.O. 1" x 7"	6/26/35
1917	R. Oak	7"	S71W	54	Posters on both BTs	✓
W 1/2 S11	No BTs.				G.L.O. 1" x 12"	7/2/35
1917	✓ 1 nl on 6" Red Oak - N67W 21 1/2					✓
NE 1/2 S11	R. Oak	8	N44E	22	← Poster G.L.O. 2" x 6"	
S31S2 S10S11	R. Oak	8	N34W	36	← Poster	
1917	Aspen	7	S76 1/2 W	17		7/2/35 ✓
NE 1/2 S10S11	Aspen	8	N16E	10	G.L.O. 1" x 6"	7/2/35
WC MC 1917	Red Oak	6	S85W	18	← Poster	✓
NE 1/2 S11	Aspen	10"	S30E	27	← Poster	7/3/35
1917					G.L.O. 1" x 8"	✓
NE 1/2 S11	J.P. Pine	12	S70 1/2 E	60	G.L.O. 1" x 8"	7/3/35
1917	Poster on 11" J.P. S74W - 16. 1/2 s.					✓



April 6 - 1936

2073  
2074  
2075

Sec. 8 T14N, R. 30W.



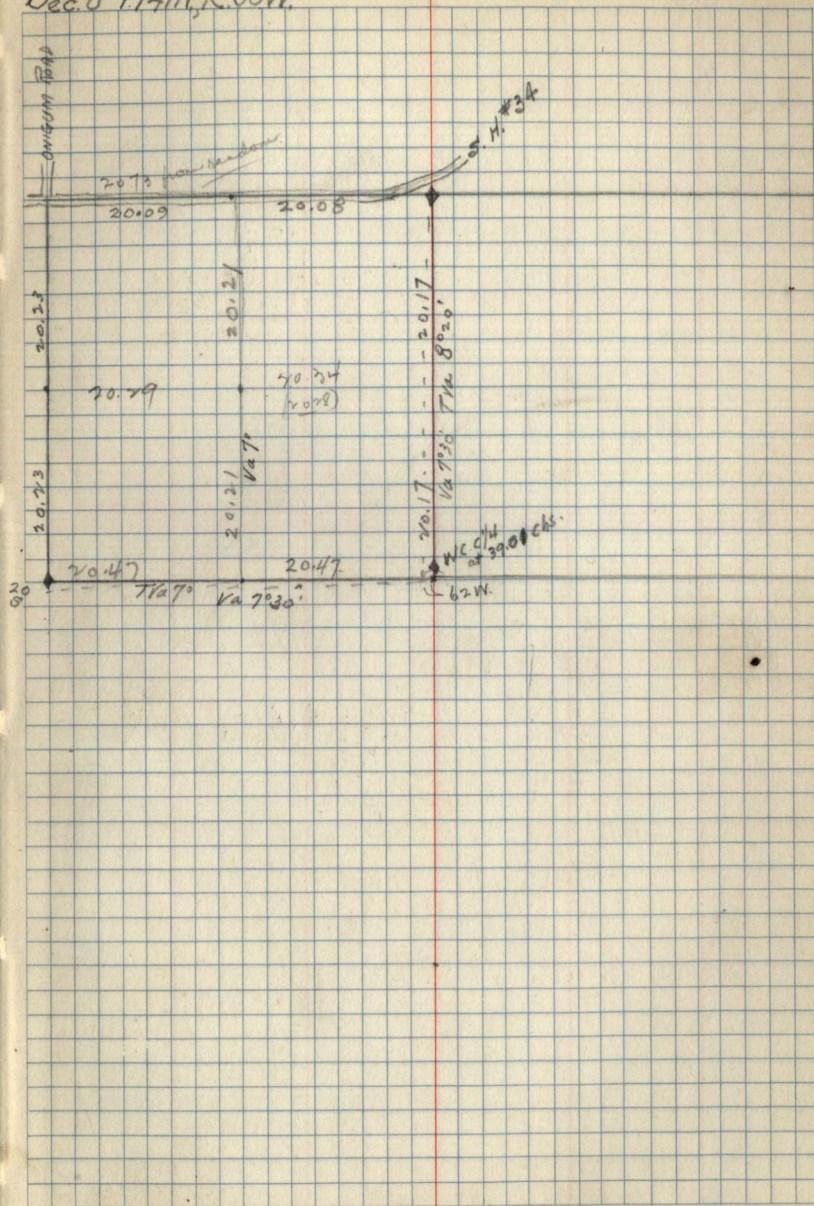


April 6-1936

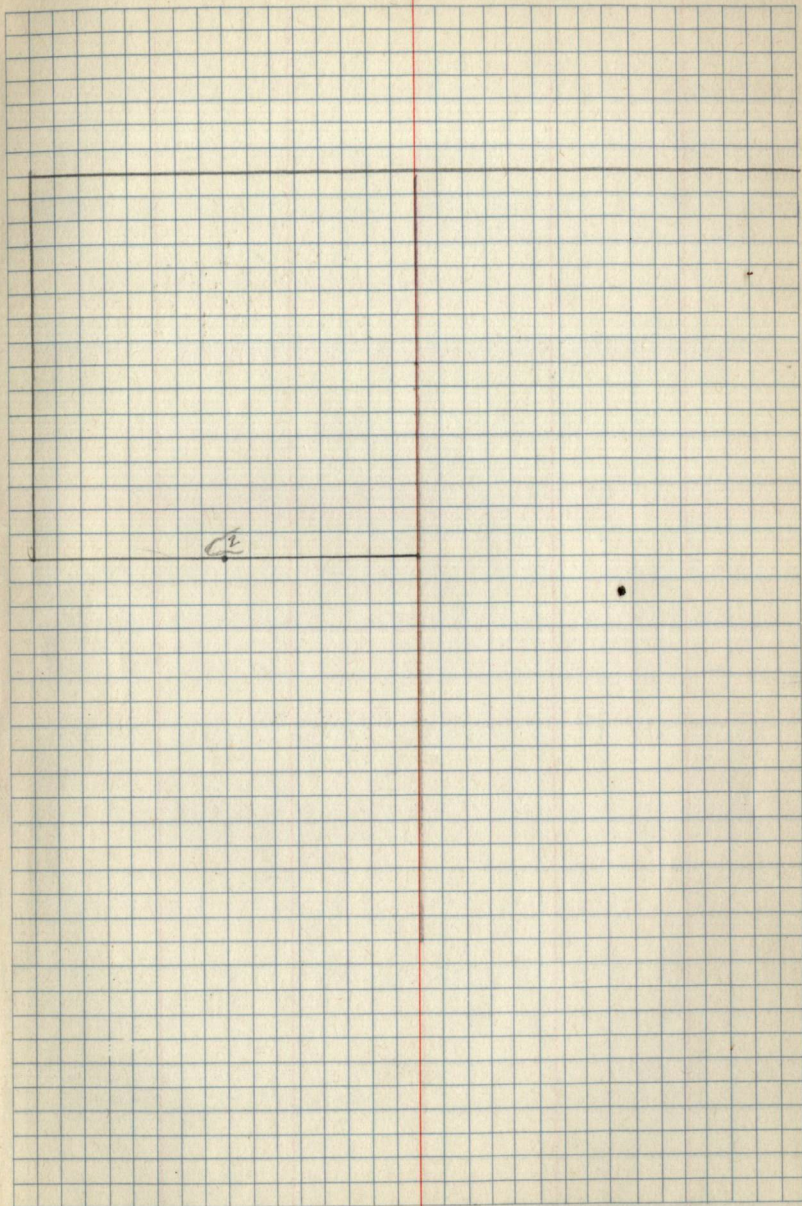
2070  
29  
64

8

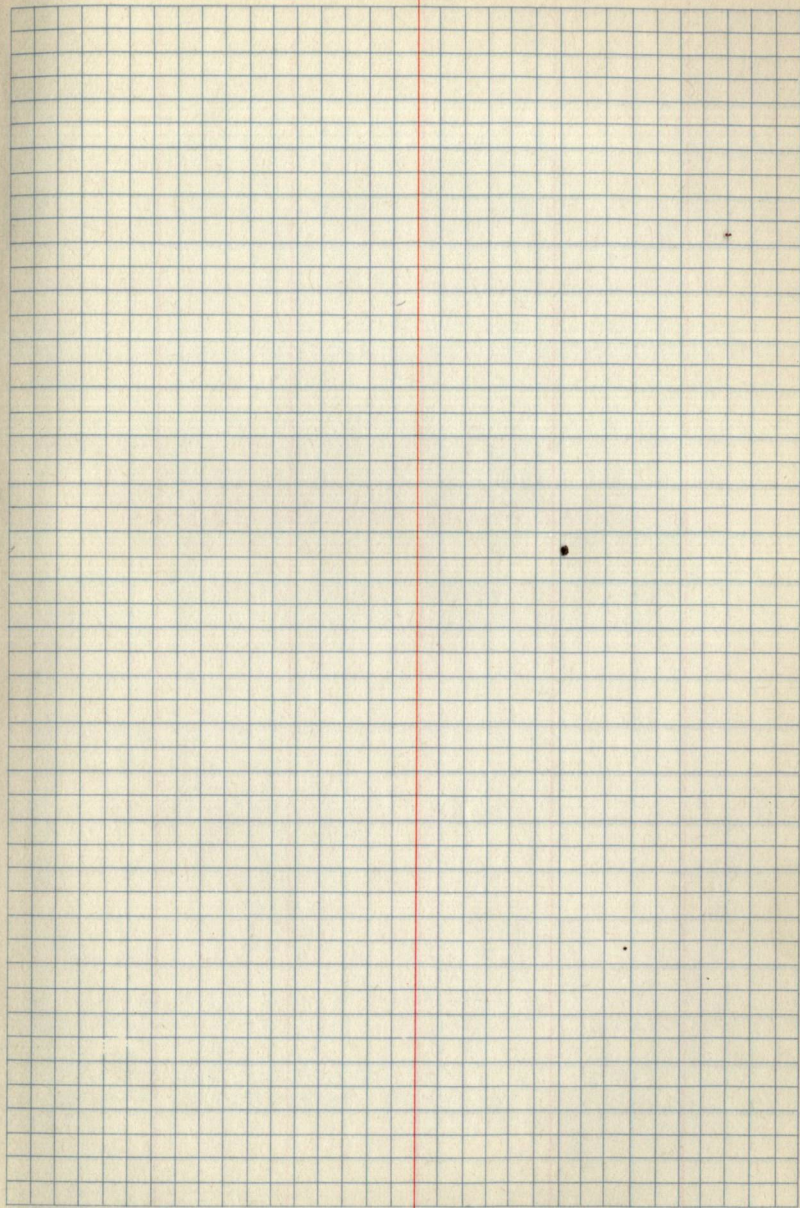
Sec. 8 T14N, R. 30W.



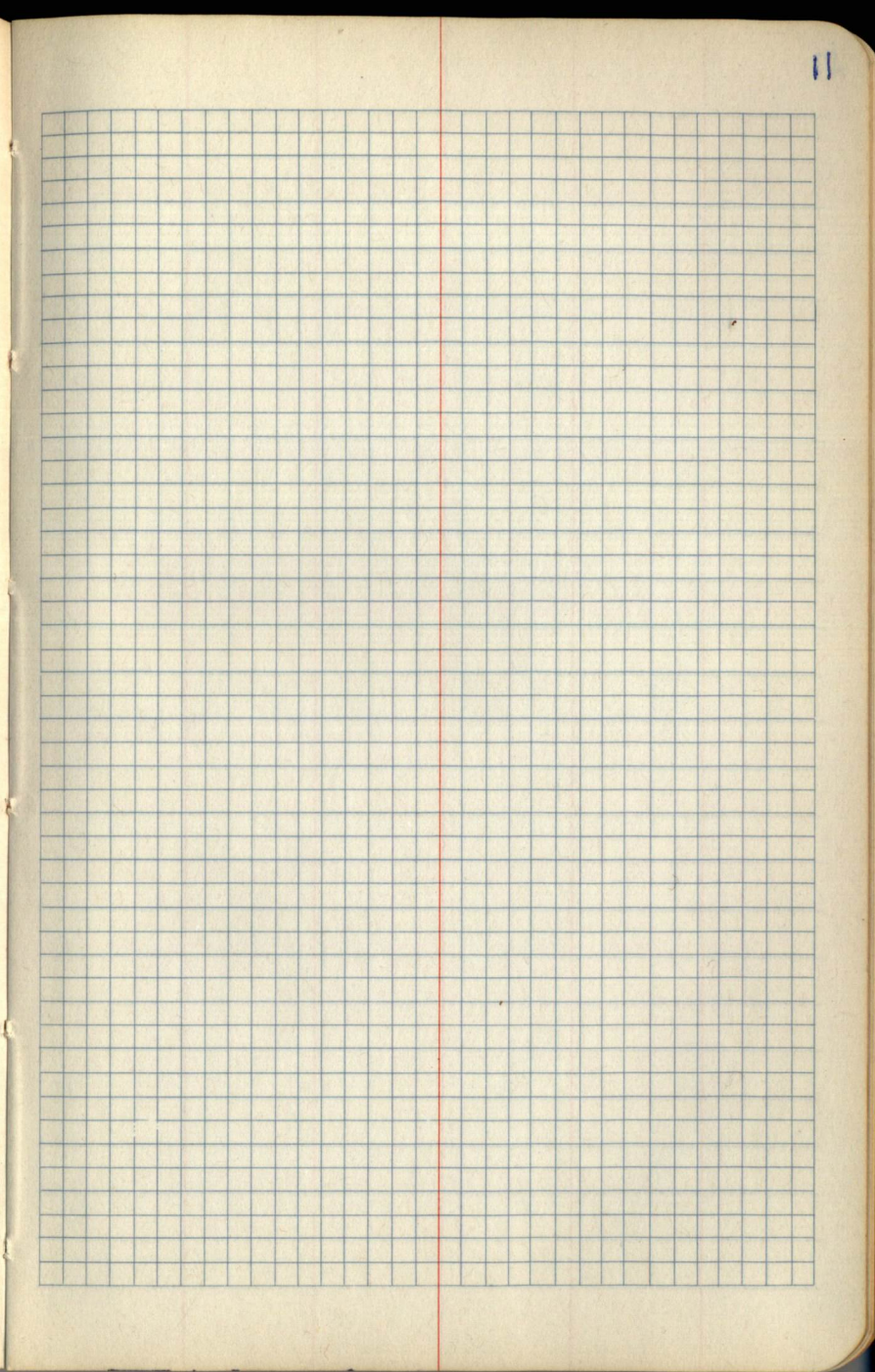
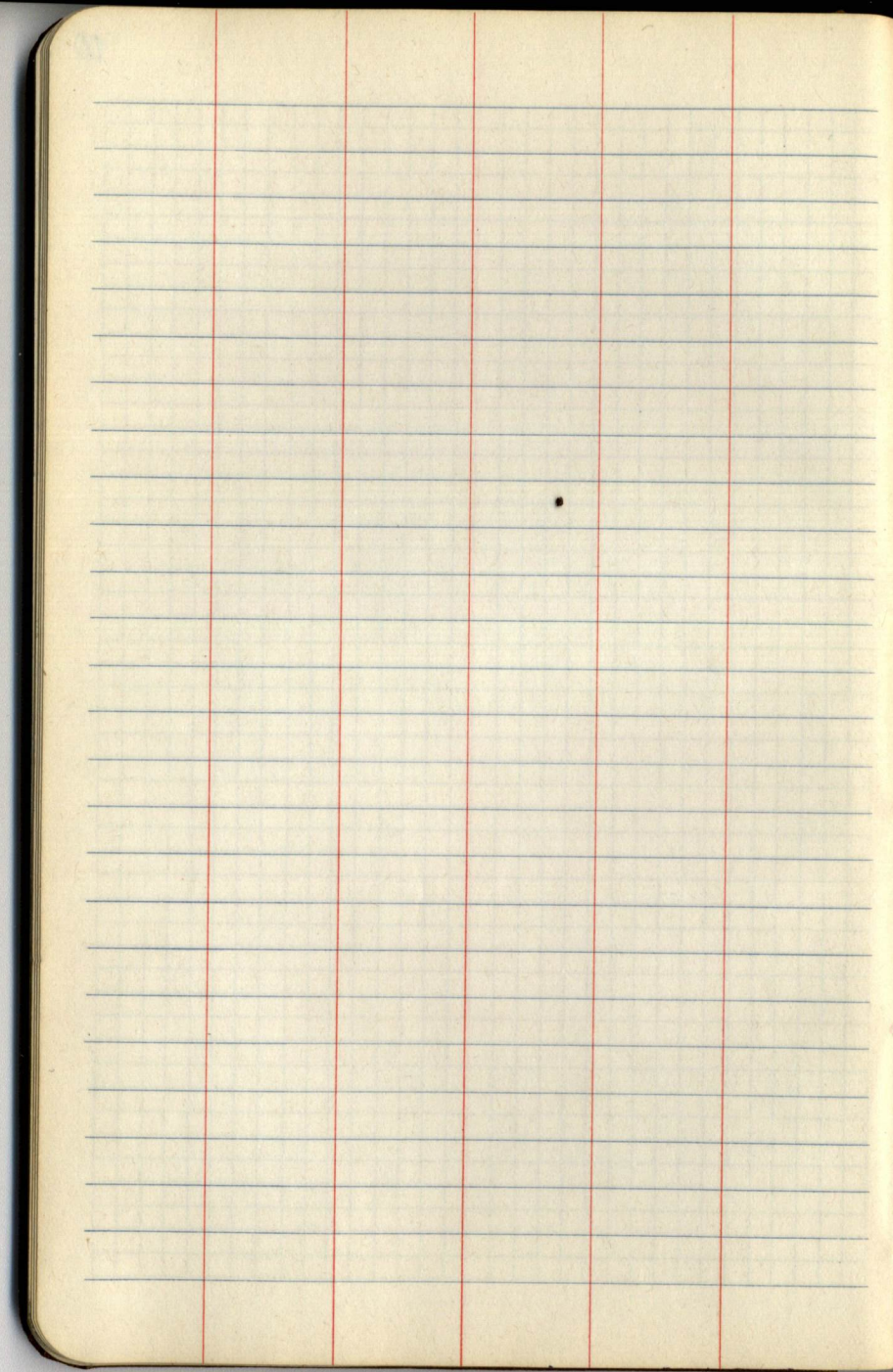




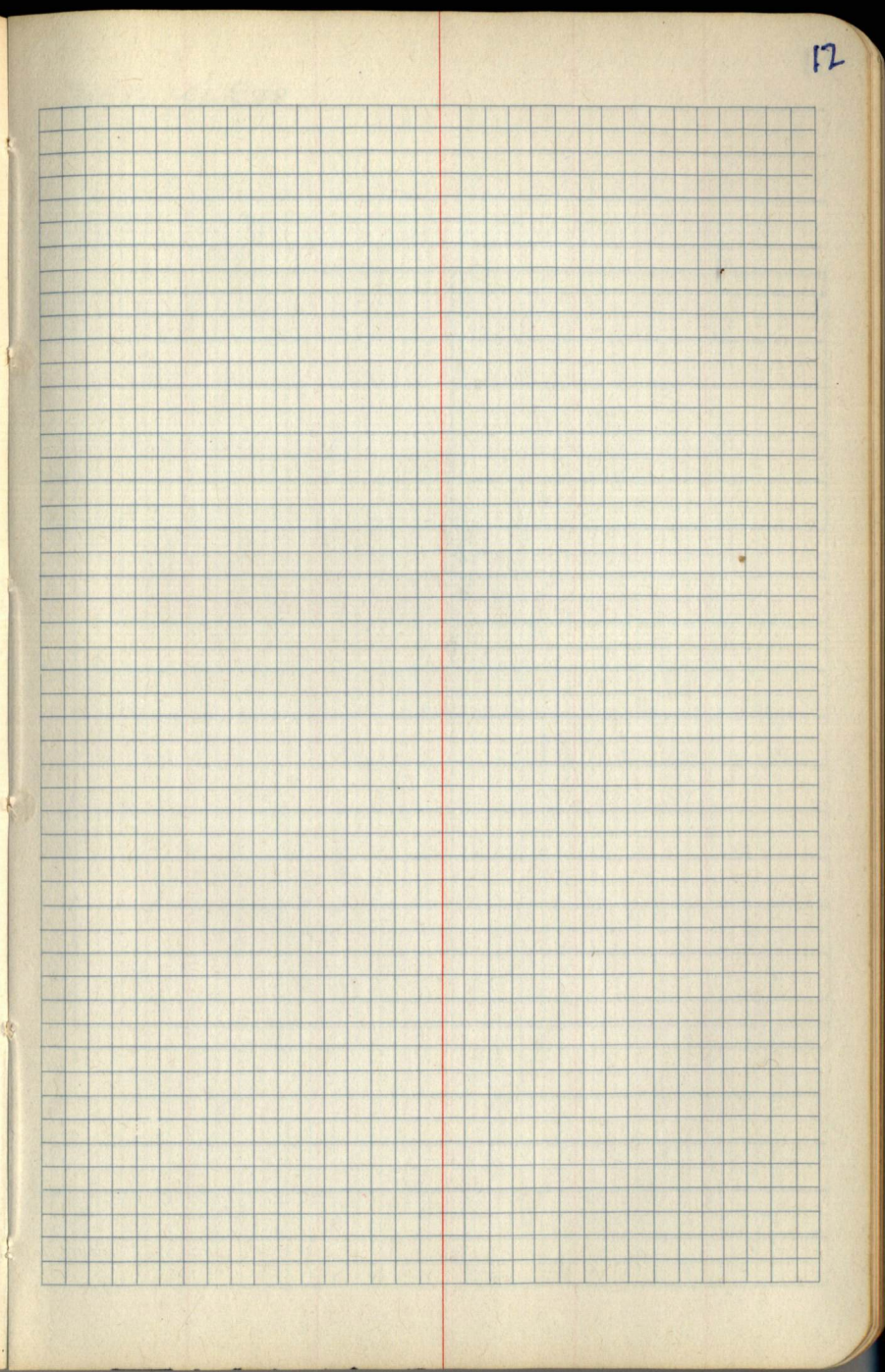
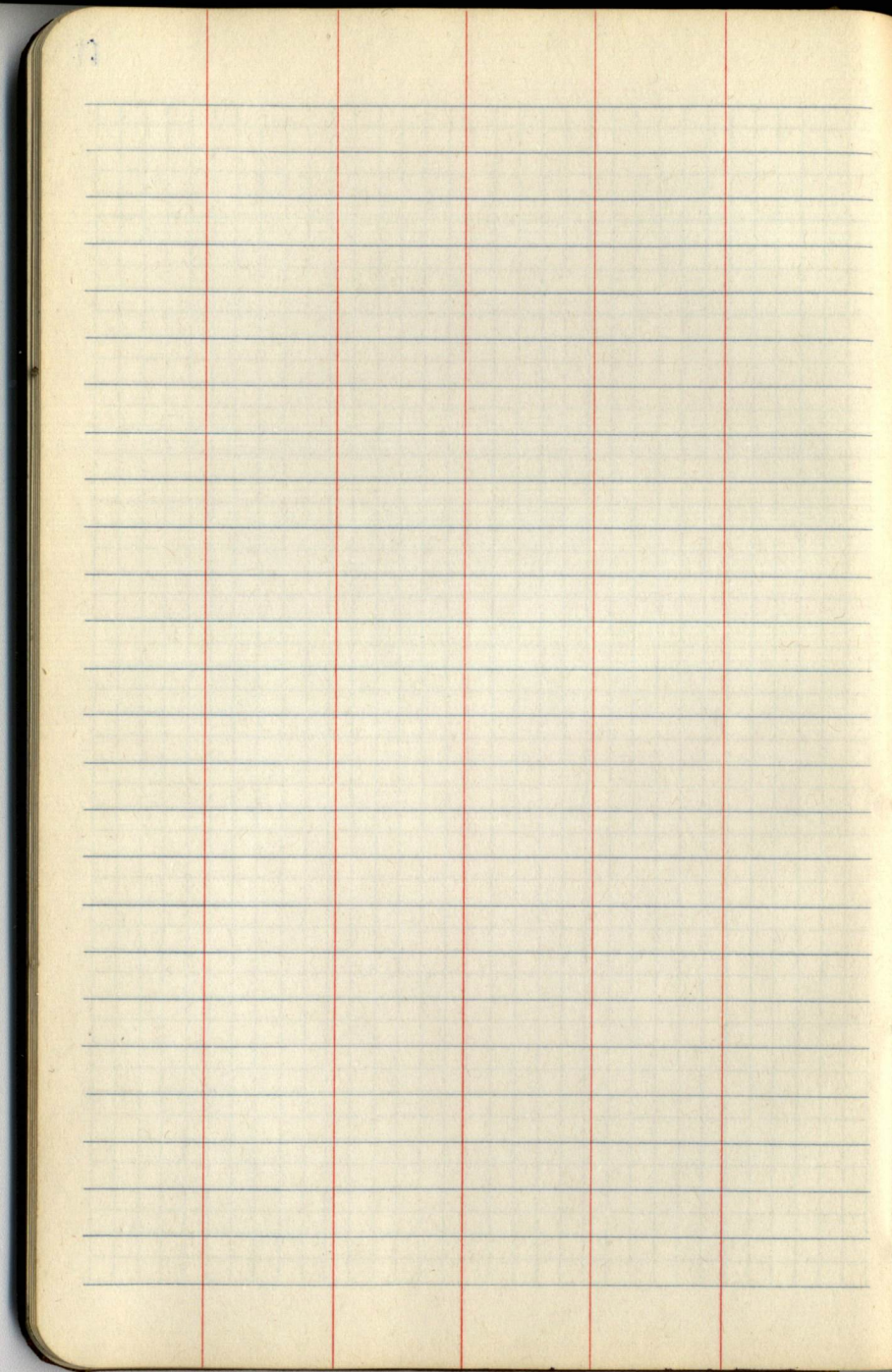








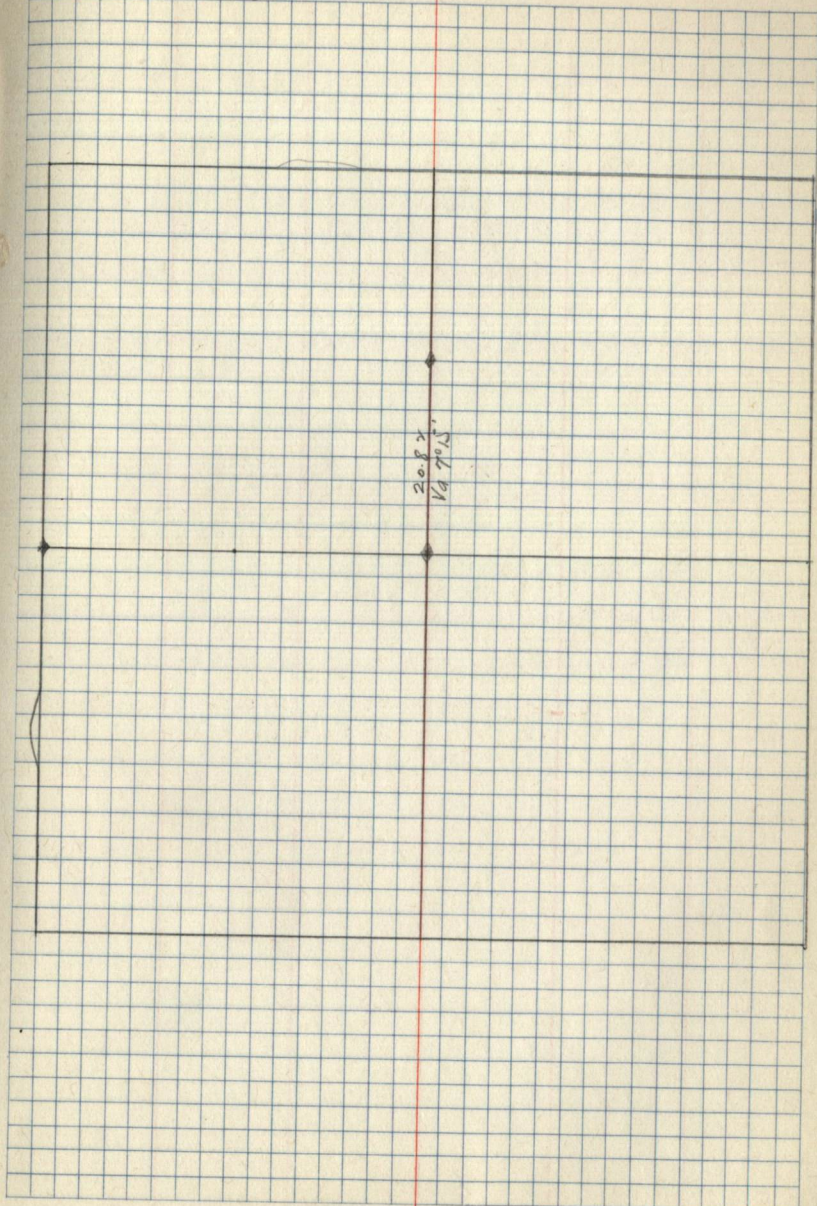






SEC. 1-141-R28

13





Pages 14-End  
are Blank