

OFFICE

142-30

Do not film
Duplicate of #5

ccc

6

EUGENE DIETZGEN CO.

DRAWING MATERIALS, MATHEMATICAL and
SURVEYING INSTRUMENTS

Chicago New York San Francisco New Orleans Pittsburg Toronto

Distances from Center of Roadway for Cross-Sectioning
Roadway 16 feet wide. Side Slopes 1 on 1.
For Single Track Embankment.

H	0	.1	.2	.3	.4	.5	.6	.7	.8	.9	H
0	8.0	8.1	8.2	8.3	8.4	8.5	8.6	8.7	8.8	8.9	0
1	9.0	9.1	9.2	9.3	9.4	9.5	9.6	9.7	9.8	9.9	1
2	10.0	10.1	10.2	10.3	10.4	10.5	10.6	10.7	10.8	10.9	2
3	11.0	11.1	11.2	11.3	11.4	11.5	11.6	11.7	11.8	11.9	3
4	12.0	12.1	12.2	12.3	12.4	12.5	12.6	12.7	12.8	12.9	4
5	13.0	13.1	13.2	13.3	13.4	13.5	13.6	13.7	13.8	13.9	5
6	14.0	14.1	14.2	14.3	14.4	14.5	14.6	14.7	14.8	14.9	6
7	15.0	15.1	15.2	15.3	15.4	15.5	15.6	15.7	15.8	15.9	7
8	16.0	16.1	16.2	16.3	16.4	16.5	16.6	16.7	16.8	16.9	8
9	17.0	17.1	17.2	17.3	17.4	17.5	17.6	17.7	17.8	17.9	9
10	18.0	18.1	18.2	18.3	18.4	18.5	18.6	18.7	18.8	18.9	10
11	19.0	19.1	19.2	19.3	19.4	19.5	19.6	19.7	19.8	19.9	11
12	20.0	20.1	20.2	20.3	20.4	20.5	20.6	20.7	20.8	20.9	12
13	21.0	21.1	21.2	21.3	21.4	21.5	21.6	21.7	21.8	21.9	13
14	22.0	22.1	22.2	22.3	22.4	22.5	22.6	22.7	22.8	22.9	14
15	23.0	23.1	23.2	23.3	23.4	23.5	23.6	23.7	23.8	23.9	15
16	24.0	24.1	24.2	24.3	24.4	24.5	24.6	24.7	24.8	24.9	16
17	25.0	25.1	25.2	25.3	25.4	25.5	25.6	25.7	25.8	25.9	17
18	26.0	26.1	26.2	26.3	26.4	26.5	26.6	26.7	26.8	26.9	18
19	27.0	27.1	27.2	27.3	27.4	27.5	27.6	27.7	27.8	27.9	19
20	28.0	28.1	28.2	28.3	28.4	28.5	28.6	28.7	28.8	28.9	20
21	29.0	29.1	29.2	29.3	29.4	29.5	29.6	29.7	29.8	29.9	21
22	30.0	30.1	30.2	30.3	30.4	30.5	30.6	30.7	30.8	30.9	22
23	31.0	31.1	31.2	31.3	31.4	31.5	31.6	31.7	31.8	31.9	23
24	32.0	32.1	32.2	32.3	32.4	32.5	32.6	32.7	32.8	32.9	24
25	33.0	33.1	33.2	33.3	33.4	33.5	33.6	33.7	33.8	33.9	25
26	34.0	34.1	34.2	34.3	34.4	34.5	34.6	34.7	34.8	34.9	26
27	35.0	35.1	35.2	35.3	35.4	35.5	35.6	35.7	35.8	35.9	27
28	36.0	36.1	36.2	36.3	36.4	36.5	36.6	36.7	36.8	36.9	28
29	37.0	37.1	37.2	37.3	37.4	37.5	37.6	37.7	37.8	37.9	29
30	38.0	38.1	38.2	38.3	38.4	38.5	38.6	38.7	38.8	38.9	30
31	39.0	39.1	39.2	39.3	39.4	39.5	39.6	39.7	39.8	39.9	31
32	40.0	40.1	40.2	40.3	40.4	40.5	40.6	40.7	40.8	40.9	32
33	41.0	41.1	41.2	41.3	41.4	41.5	41.6	41.7	41.8	41.9	33
34	42.0	42.1	42.2	42.3	42.4	42.5	42.6	42.7	42.8	42.9	34
35	43.0	43.1	43.2	43.3	43.4	43.5	43.6	43.7	43.8	43.9	35
36	44.0	44.1	44.2	44.3	44.4	44.5	44.6	44.7	44.8	44.9	36
37	45.0	45.1	45.2	45.3	45.4	45.5	45.6	45.7	45.8	45.9	37
38	46.0	46.1	46.2	46.3	46.4	46.5	46.6	46.7	46.8	46.9	38
39	47.0	47.1	47.2	47.3	47.4	47.5	47.6	47.7	47.8	47.9	39
40	48.0	48.1	48.2	48.3	48.4	48.5	48.6	48.7	48.8	48.9	40

Example—If point is 22.6 ft. above grade, how far should it be from center line to be a slope stake point? Ans. from Table 30.6. For same slopes but other widths of roadbed, correct above figures by one-half difference in width of roadbed; thus in example above, for 20 ft. roadbed distance will be $30.6 + (20 - 16) \div 2$ or 2 ft. added to $30.6 = 32.6$. For slopes of 1 on $1\frac{1}{2}$ see inside of back cover.

Copyright, 1914, by Eugene Dietzgen Co.

The paper stock of this book is made of a high grade 50% rag paper having a water resisting surface and is sewed with Bing Special Enamel Waterproof Thread.

142-30

Scanned

8-15-12

Spanner

Pages 001-015
are blank

R 22NR304
8/13
17/16

1/6 #9
5/16

1/6 #2
5/16

1/6 #9
5/16

1/6 #1
5/16

R 22NR304
9/10
16/15

1/6 #7
5/16

1/6 #5 G.L.O. 1" I.M. + brass Cap 8" Above ground
B.Ts. 8" Oak N. 71° W. 58 lks 12" Oak S 66° E. 55 lks.

1/6 #4 G.L.O. 1" I.M. + brass Cap. 12" Above ground
Form 458a on 5" Ash S 53° W. 74 lks.

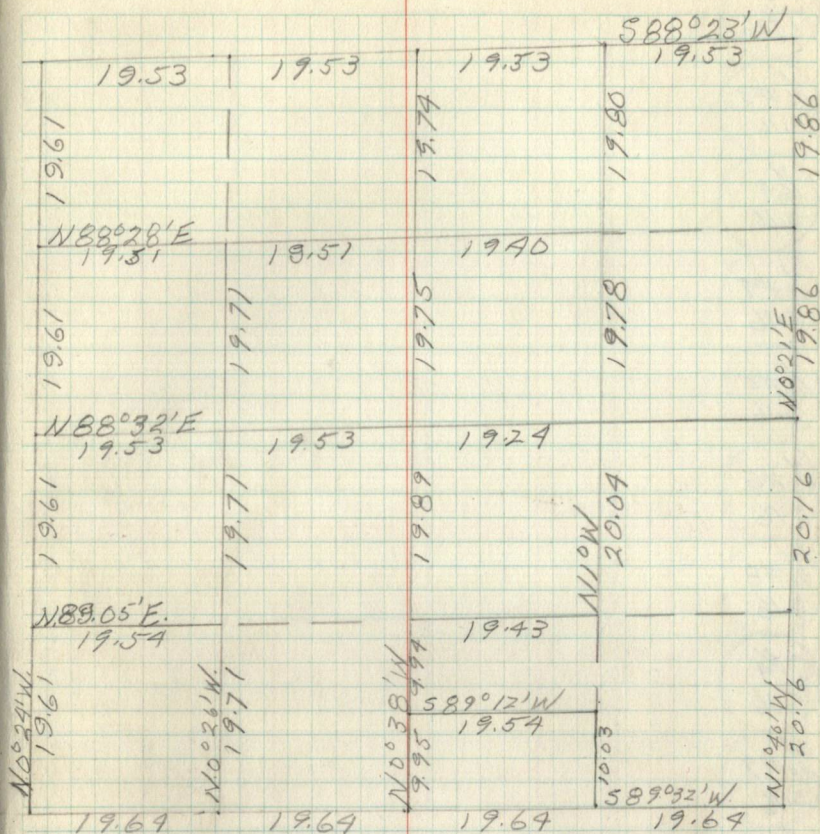
R 22NR304
16/15
21/22 G.L.O. 2" I.M. + brass Cap 14" Above ground
Form 458 on 4" Elm Post at Corner

1/6 #11 G.L.O. 1" I.M. + brass Cap 14" Above ground
B.T. 14" N. Pine N 61° E. 89 lks. Form 458a on B.T.

1/6 #16 G.L.O. 1" I.M. + brass Cap 12" Above ground
B.T. 24" W. Pine N 29° E. 38 lks. Form 458a on B.T.

1/6 #10 G.L.O. 1" I.M. + brass Cap 7" Above ground
Form 458a on 8" Aspen S 32° E. 17 lks

R 22NR304
17/16
20/21 G.L.O. 2" I.M. + brass Cap 10" Above ground
Form 458 on 4" Aspen Post at Corner



1/6 #10 G.L.O. 1" I.M. + brass Cap. 10" Above ground
5/16 Form 458a on 8" Elm N 48° W. 54 lks.

1/4
17+16

1/6 #3
5.16

1/6 #4
5.16

1/6 #5
5.16

1/6 #6
5.16

1/6 #8
5.16

C 1/4
5.16

1/6 #9
5.16

1/6 #9
5.16

1/6 #9
5.16

1/6 #11
5.16

G.L.O. 1" I.M. + brass Cap 7" Above ground
B.T. 10" Aspen N36°W 291ks. 10" Aspen Snag N97°E 251ks.

1/6 #11
5.16

G.L.O. 1" I.M. + brass Cap 7" Above ground
B.T. 10" Aspen N91°W. 951ks.

1/6 #11
5.16

G.L.O. 1" I.M. + brass Cap 10" Above ground
Form 958a on 8" Aspen S61°E 201ks.

1/6 #11
5.16

G.L.O. 1" I.M. + brass Cap 6" Above ground
Form 958a on 5" W. Pine N72°E. 431ks.

1/6 #13
5.16

G.L.O. 1" I.M. + brass Cap 6" Above ground
B.T. 6" R. Pine N37°W. 271ks. Form 958a on B.T.

Pages 017-020
are blank

17/18/20
20/21
G.L.O. 2" I.M. & brass Cap 10" Above ground
Form 958 on 4" Aspen Post at Corner

1/6 #1
5.21
G.L.O. 1" I.M. & brass Cap 7" Above ground
Form 958 on 8" Aspen 5320 E. 17 lbs

1/4 #16
21
G.L.O. 1" I.M. & brass Cap 12" Above ground
B.T. 2" W. Pine N240 E. 38 lbs. Form 958 on B.T.

1/6 #11
5.21
G.L.O. 1" I.M. & brass Cap 14" Above ground
B.T. 1/4" R. Pine N61 E. 89 lbs. Form 958 on B.T.

1/2 #2
16/15
21/22
G.L.O. 2" I.M. & brass Cap 12" Above ground
Form 958 on 4" Elm Post at Corner

1/6 #7
5.21
4
21/22

1/6 #12
5.21
G.L.O. 1" I.M. & brass Cap 8" Above ground

1/2 #2
14/21
28/27
G.L.O. 2" I.M. & brass Cap 10" Above ground
Form 958 on 3" Cedar Post at Corner

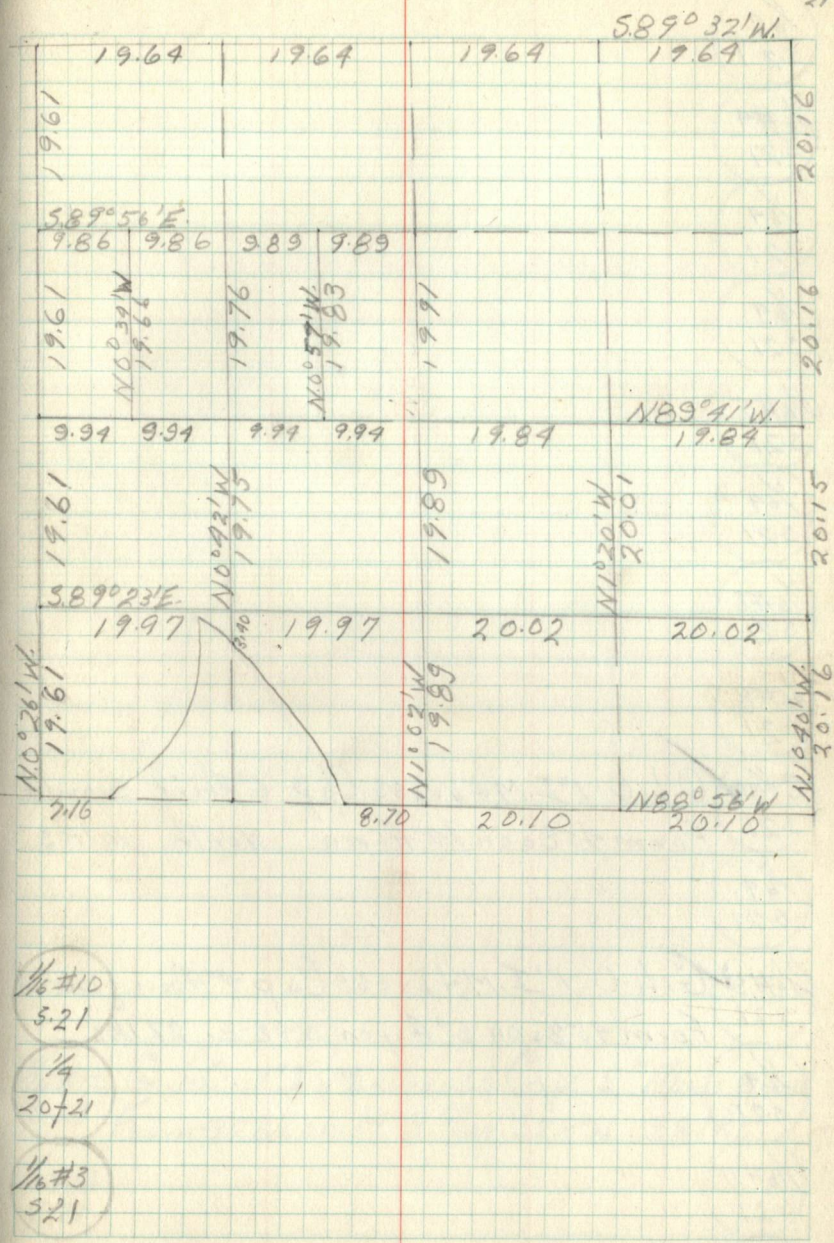
1/6 #18
5.21
~~G.L.O. 1" I.M. & brass Cap 12" Above ground~~
~~Form 958 on 8" Aspen 430 W. 7 lbs~~

1/4 #28
28
G.L.O. 1" I.M. & brass Cap 5" Above ground
Form 958 on 6" R. Pine N58 W. 19 lbs.

M.C. 21
28

21
28/M.C.

14/20
20/21
27/28



1/6 #10
5.21

1/4
20/21

1/6 #3
5.21

1/6 1
5.21

1/6 #4
5.21

1/6 4
5.21

1/6 4
5.21

1/6 #5
5.21

1/6 4
5.21

1/6 #6
5.21

1/6 #8
5.21

✓ C 1/6 G.L.O. 1" I.M. & brass Cap 6" Above ground
5.21 Form 458a on 19" Aspen North 101ks

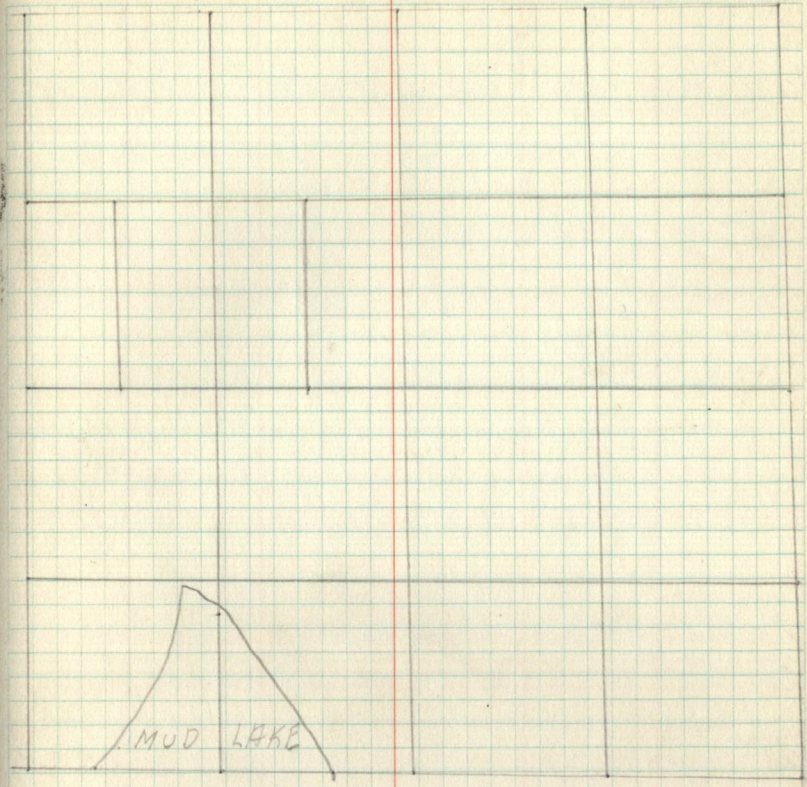
1/6 4
5.21

✓ 1/6 #9 G.L.O. 1" I.M. & brass Cap 9" Above ground
5.21 Form 458a on 6" Aspen N48°E. 221ks.

1/6 4
5.21

1/6 #11
5.21

S.M.C.
5.21



1/6 #12 G.L.O. 1" I.M. & brass Cap. 5" Above ground
5.21 Form 458a on 14" R. Pine S23°W 381ks.

1/6 #13
5.21

Pages 022-027
are blank

K14N830W
20121
29R6

21/1
28/MC

MC/21
28

1/4 #21 ✓ G.h.O. 1" I.M. + brass Cap 5" Above ground
28, Form 458a on 6" R. Pine N58°W. 14 lks

~~1/4 #1 G.h.O. 1" I.M. + brass Cap 14" Above ground
528 Form 458a on 8" R. Pine N34°W. 7 lks~~

1/4 #22 ✓ G.h.O. 2" I.M. + brass Cap. 10" Above ground
28, Form 458a on 3" Aspen Post at Corner

1/4 #7 ✓ G.h.O. 1" I.M. + brass Cap 6" Above ground
528 Form 458a on 7" Tomarock N.59°E. 8 lks.

1/4 #28 ✓ G.h.O. 1" I.M. + brass Cap 7" Above ground
28, Form 458a on 16" Aspen N50°W. 9 lks.

1/4 #8 ✓ F.S. Approx. 4" X 3" Aspen post.
528 Form 458a on Fence Post 570°E 20 lks.

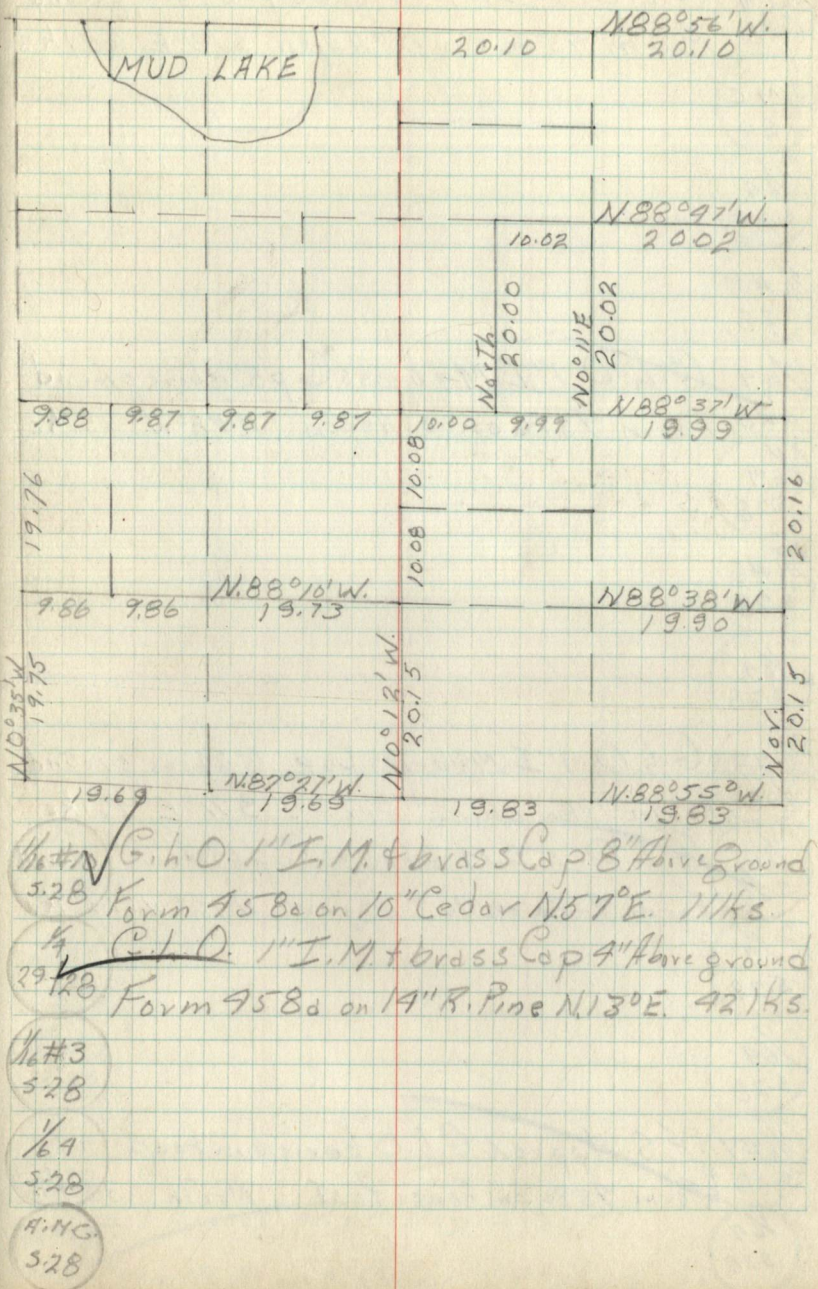
1/4 #NR30 ✓ Iron pipe in fence corner.
2827
33/39

1/4 #1 ✓ F.S. Approx. 4" X 3" Aspen Post
528 Form 458a on 6" Cedar 562°E 29 lks

1/4 38
33

1/4 #16
528

1/4 #NR31 ✓ F.S. Approx. 3" Aspen Post. G.h.O. buried in road
29128
37/33 Form 458a on location Post North 161 lks.



~~1/6 #4~~ G.l.O. 1" I.M. & brass Cap 8" Above ground
5.28 Form 458a on 12" Aspen S. 13° E. 25 lks.

S.M.C.
5.28

1/6 #9
5.28

1/6 #5
5.28

~~1/6 #4~~ G.l.O. 1" I.M. & brass Cap 8" Above ground
5.28 Form 458a on 10" Aspen N 58° W. 25 lks.

1/6 #9
5.28

1/6 #6
5.28

1/6 #9
5.28

~~1/6 #8~~ G.l.O. 1" I.M. & brass Cap 6" Above ground
5.28 Form 458a on 10" Spruce S 71° E 22 lks

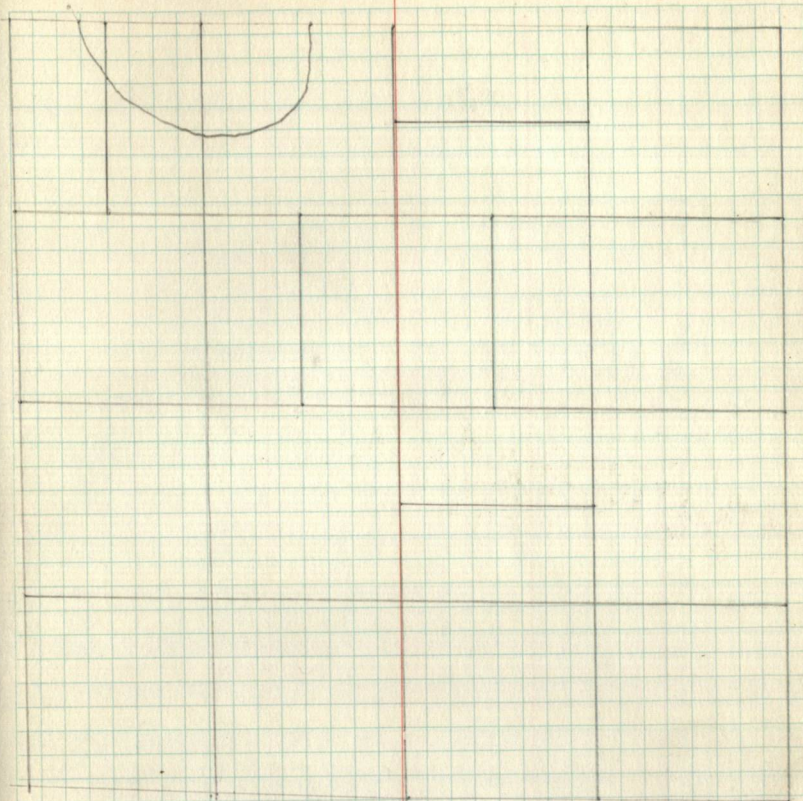
~~1/6 #9~~ G.l.O. 1" I.M. & brass Cap 6" Above ground
5.28 Form 458a on 10" Aspen N 92° W. 14 lks

C/A
8.28

1/6 #9
5.28

~~1/6 #9~~ F.S. Approx. G.l.O. buried in road
5.28 Form 458a on Fence Post North 30 lks

1/6 #9
5.28



1/6 #9
5.28

1/6 #11
5.28

1/6 #12
5.28

1/6 #9
5.28

~~1/6 #13~~ F.S. Approx. 4" X 3' Aspen Post
5.28 Form 458a on 8" Cedar N 90° W. 15 lks.

Pages 029- End
are blank