

FIELD

142-30

WILSON
1908

MINING
TRANSIT BOOK

No. 4221

ccc

5

EUGENE DIETZGEN CO.

DRAWING MATERIALS, MATHEMATICAL and
SURVEYING INSTRUMENTS

Chicago New York San Francisco New Orleans Pittsburg Toronto

Distances from Center of Roadway for Cross-Sectioning
Roadway 16 feet wide. Side Slopes 1 on 1.
For Single Track Embankment.

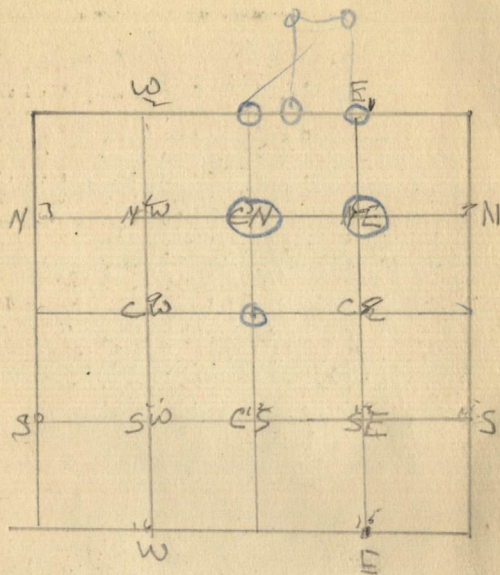
H	0	.1	.2	.3	.4	.5	.6	.7	.8	.9	H
0	8.0	8.1	8.2	8.3	8.4	8.5	8.6	8.7	8.8	8.9	0
1	9.0	9.1	9.2	9.3	9.4	9.5	9.6	9.7	9.8	9.9	1
2	10.0	10.1	10.2	10.3	10.4	10.5	10.6	10.7	10.8	10.9	2
3	11.0	11.1	11.2	11.3	11.4	11.5	11.6	11.7	11.8	11.9	3
4	12.0	12.1	12.2	12.3	12.4	12.5	12.6	12.7	12.8	12.9	4
5	13.0	13.1	13.2	13.3	13.4	13.5	13.6	13.7	13.8	13.9	5
6	14.0	14.1	14.2	14.3	14.4	14.5	14.6	14.7	14.8	14.9	6
7	15.0	15.1	15.2	15.3	15.4	15.5	15.6	15.7	15.8	15.9	7
8	16.0	16.1	16.2	16.3	16.4	16.5	16.6	16.7	16.8	16.9	8
9	17.0	17.1	17.2	17.3	17.4	17.5	17.6	17.7	17.8	17.9	9
10	18.0	18.1	18.2	18.3	18.4	18.5	18.6	18.7	18.8	18.9	10
11	19.0	19.1	19.2	19.3	19.4	19.5	19.6	19.7	19.8	19.9	11
12	20.0	20.1	20.2	20.3	20.4	20.5	20.6	20.7	20.8	20.9	12
13	21.0	21.1	21.2	21.3	21.4	21.5	21.6	21.7	21.8	21.9	13
14	22.0	22.1	22.2	22.3	22.4	22.5	22.6	22.7	22.8	22.9	14
15	23.0	23.1	23.2	23.3	23.4	23.5	23.6	23.7	23.8	23.9	15
16	24.0	24.1	24.2	24.3	24.4	24.5	24.6	24.7	24.8	24.9	16
17	25.0	25.1	25.2	25.3	25.4	25.5	25.6	25.7	25.8	25.9	17
18	26.0	26.1	26.2	26.3	26.4	26.5	26.6	26.7	26.8	26.9	18
19	27.0	27.1	27.2	27.3	27.4	27.5	27.6	27.7	27.8	27.9	19
20	28.0	28.1	28.2	28.3	28.4	28.5	28.6	28.7	28.8	28.9	20
21	29.0	29.1	29.2	29.3	29.4	29.5	29.6	29.7	29.8	29.9	21
22	30.0	30.1	30.2	30.3	30.4	30.5	30.6	30.7	30.8	30.9	22
23	31.0	31.1	31.2	31.3	31.4	31.5	31.6	31.7	31.8	31.9	23
24	32.0	32.1	32.2	32.3	32.4	32.5	32.6	32.7	32.8	32.9	24
25	33.0	33.1	33.2	33.3	33.4	33.5	33.6	33.7	33.8	33.9	25
26	34.0	34.1	34.2	34.3	34.4	34.5	34.6	34.7	34.8	34.9	26
27	35.0	35.1	35.2	35.3	35.4	35.5	35.6	35.7	35.8	35.9	27
28	36.0	36.1	36.2	36.3	36.4	36.5	36.6	36.7	36.8	36.9	28
29	37.0	37.1	37.2	37.3	37.4	37.5	37.6	37.7	37.8	37.9	29
30	38.0	38.1	38.2	38.3	38.4	38.5	38.6	38.7	38.8	38.9	30
31	39.0	39.1	39.2	39.3	39.4	39.5	39.6	39.7	39.8	39.9	31
32	40.0	40.1	40.2	40.3	40.4	40.5	40.6	40.7	40.8	40.9	32
33	41.0	41.1	41.2	41.3	41.4	41.5	41.6	41.7	41.8	41.9	33
34	42.0	42.1	42.2	42.3	42.4	42.5	42.6	42.7	42.8	42.9	34
35	43.0	43.1	43.2	43.3	43.4	43.5	43.6	43.7	43.8	43.9	35
36	44.0	44.1	44.2	44.3	44.4	44.5	44.6	44.7	44.8	44.9	36
37	45.0	45.1	45.2	45.3	45.4	45.5	45.6	45.7	45.8	45.9	37
38	46.0	46.1	46.2	46.3	46.4	46.5	46.6	46.7	46.8	46.9	38
39	47.0	47.1	47.2	47.3	47.4	47.5	47.6	47.7	47.8	47.9	39
40	48.0	48.1	48.2	48.3	48.4	48.5	48.6	48.7	48.8	48.9	40

Example—If point is 22.6 ft. above grade, how far should it be from center line to be a slope stake point? Ans. from Table 30.6. For same slopes but other widths of roadbed, correct above figures by one-half difference in width of roadbed; thus in example above, for 20 ft. roadbed distance will be $30.6 + (20 - 16) \div 2$ or 2 ft. added to $30.6 = 32.6$. For slopes of 1 on $1\frac{1}{2}$ see inside of back cover.
Copyright, 1914, by Eugene Dietzgen Co.

815 - 8135

142-30
Scanned
July 11, 2012
Ronney

The paper stock of this book is made of a high grade 50% rag paper having a water resisting surface. This book is sewed with Bing Special Enamel Waterproof Thread.



DISTANCES FROM CENTER OF ROADWAY FOR
CROSS-SECTIONING.

Roadway 16 feet wide. Side Slopes 1 on 1½
For Single Track Embankment.

H	0	.1	.2	.3	.4	.5	.6	.7	.8	.9	H
0	8.0	8.2	8.3	8.5	8.6	8.8	8.9	9.1	9.2	9.4	0
1	9.5	9.7	9.8	10.0	10.1	10.3	10.4	10.6	10.7	10.9	1
2	11.0	11.2	11.3	11.5	11.6	11.8	11.9	12.1	12.2	12.4	2
3	12.5	12.7	12.8	13.0	13.1	13.3	13.4	13.6	13.7	13.9	3
4	14.0	14.2	14.3	14.5	14.6	14.8	14.9	15.1	15.2	15.4	4
5	15.5	15.7	15.8	16.0	16.1	16.3	16.4	16.6	16.7	16.9	5
6	17.0	17.2	17.3	17.5	17.6	17.8	17.9	18.1	18.2	18.4	6
7	18.5	18.7	18.8	19.0	19.1	19.3	19.4	19.6	19.7	19.9	7
8	20.0	20.2	20.3	20.5	20.6	20.8	20.9	21.1	21.2	21.4	8
9	21.5	21.7	21.8	22.0	22.1	22.3	22.4	22.6	22.7	22.9	9
10	23.0	23.2	23.3	23.5	23.6	23.8	23.9	24.1	24.2	24.4	10
11	24.5	24.7	24.8	25.0	25.1	25.3	25.4	25.6	25.7	25.9	11
12	26.0	26.2	26.3	26.5	26.6	26.8	26.9	27.1	27.2	27.4	12
13	27.5	27.7	27.8	28.0	28.1	28.3	28.4	28.6	28.7	28.9	13
14	29.0	29.2	29.3	29.5	29.6	29.8	29.9	30.1	30.2	30.4	14
15	30.5	30.7	30.8	31.0	31.1	31.3	31.4	31.6	31.7	31.9	15
16	32.0	32.2	32.3	32.5	32.6	32.8	32.9	33.1	33.2	33.4	16
17	33.5	33.7	33.8	34.0	34.1	34.3	34.4	34.6	34.7	34.9	17
18	35.0	35.2	35.3	35.5	35.6	35.8	35.9	36.1	36.2	36.4	18
19	36.5	36.7	36.8	37.0	37.1	37.3	37.4	37.6	37.7	37.9	19
20	38.0	38.2	38.3	38.5	38.6	38.8	38.9	39.1	39.2	39.4	20
21	39.5	39.7	39.8	40.0	40.1	40.3	40.4	40.6	40.7	40.9	21
22	41.0	41.2	41.3	41.5	41.6	41.8	41.9	42.1	42.2	42.4	22
23	42.5	42.7	42.8	43.0	43.1	43.3	43.4	43.6	43.7	43.9	23
24	44.0	44.2	44.3	44.5	44.6	44.8	44.9	45.1	45.2	45.4	24
25	45.5	45.7	45.8	46.0	46.1	46.3	46.4	46.6	46.7	46.9	25
26	47.0	47.2	47.3	47.5	47.6	47.8	47.9	48.1	48.2	48.4	26
27	48.5	48.7	48.8	49.0	49.1	49.3	49.4	49.6	49.7	49.9	27
28	50.0	50.2	50.3	50.5	50.6	50.8	50.9	51.1	51.2	51.4	28
29	51.5	51.7	51.8	52.0	52.1	52.3	52.4	52.6	52.7	52.9	29
30	53.0	53.2	53.3	53.5	53.6	53.8	53.9	54.1	54.2	54.4	30
31	54.5	54.7	54.8	55.0	55.1	55.3	55.4	55.6	55.7	55.9	31
32	56.0	56.2	56.3	56.5	56.6	56.8	56.9	57.1	57.2	57.4	32
33	57.5	57.7	57.8	58.0	58.1	58.3	58.4	58.6	58.7	58.9	33
34	59.0	59.2	59.3	59.5	59.6	59.8	59.9	60.1	60.2	60.4	34
35	60.5	60.7	60.8	61.0	61.1	61.3	61.4	61.6	61.7	61.9	35
36	62.0	62.2	62.3	62.5	62.6	62.8	62.9	63.1	63.2	63.4	36
37	63.5	63.7	63.8	64.0	64.1	64.3	64.4	64.6	64.7	64.9	37
38	65.0	65.2	65.3	65.5	65.6	65.8	65.9	66.1	66.2	66.4	38
39	66.5	66.7	66.8	67.0	67.1	67.3	67.4	67.6	67.7	67.9	39
40	68.0	68.2	68.3	68.5	68.6	68.8	68.9	69.1	69.2	69.4	40

Example—If point is 22.6 ft. above grade, how far should it be from center line to be a slope stake point? Ans. from Table 41.9. For same slopes but other widths of roadbed correct above figures by one-half difference in width of roadbed; thus in example above for 20 ft. roadbed distance will be $41.9 + (20 - 16) \div 2$ or 2 ft. added to 41.9 = 43.9. For slopes of 1 on 1 see inside of front cover.

Pages 1 thru 15
Blank

1/4
17416

1/6 #3
5.16

1/6 #4
5.16

1/6 #7
5.16

1/6 #5
5.16

1/6 #6
5.16

1/6 #8
5.16

1/4
5.16

1/6 #9
5.16

1/6 #4
5.16

1/6 #11 ✓ G.h.O. 1" I.M. & brass Cap. 7" Above ground
5.16 B.T. 10" Aspen N36°W 291ks. 10" Aspen Snag N47°E 25ks.

1/6 #12 ✓ G.h.O. 1" I.M. & brass Cap 7" Above ground
5.16 B.T. 10" Aspen N. 41°W. 951ks.

1/6 #9 ✓ G.h.O. 1" I.M. & brass Cap 10" Above ground
5.16 Form 958a on 8" Aspen 561°E 201ks.

1/6 #10 ✓ G.h.O. 1" I.M. & brass Cap. 8" Above ground
5.16 Form 958a on 5" W. Pine N72°E 431ks.

16
1/6 #17 ✓ G.h.O. 1" I.M. & brass Cap 6" Above ground
5.16 B.T. 6" N. Pine N37°W. 271ks Form 958a on B.T.

17
Pages 17-18
are Blank

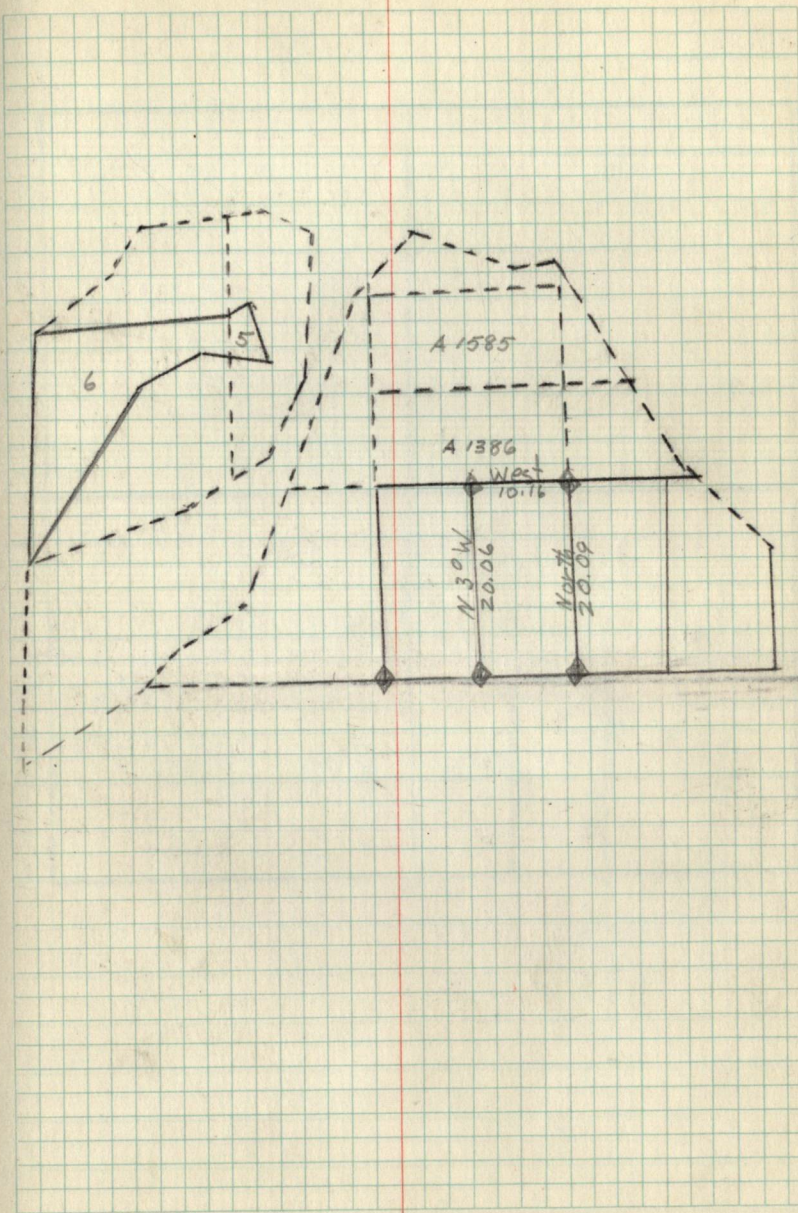
1/16 #15 ✓ GLO 1" IM + brass cap 10" above ground
519

1/16 #13 ✓ GLO 1" IM + brass cap 12" above ground
519 20" Oak N62°E 53 lbs
BTS 14" Aspen N12°W 26 lbs

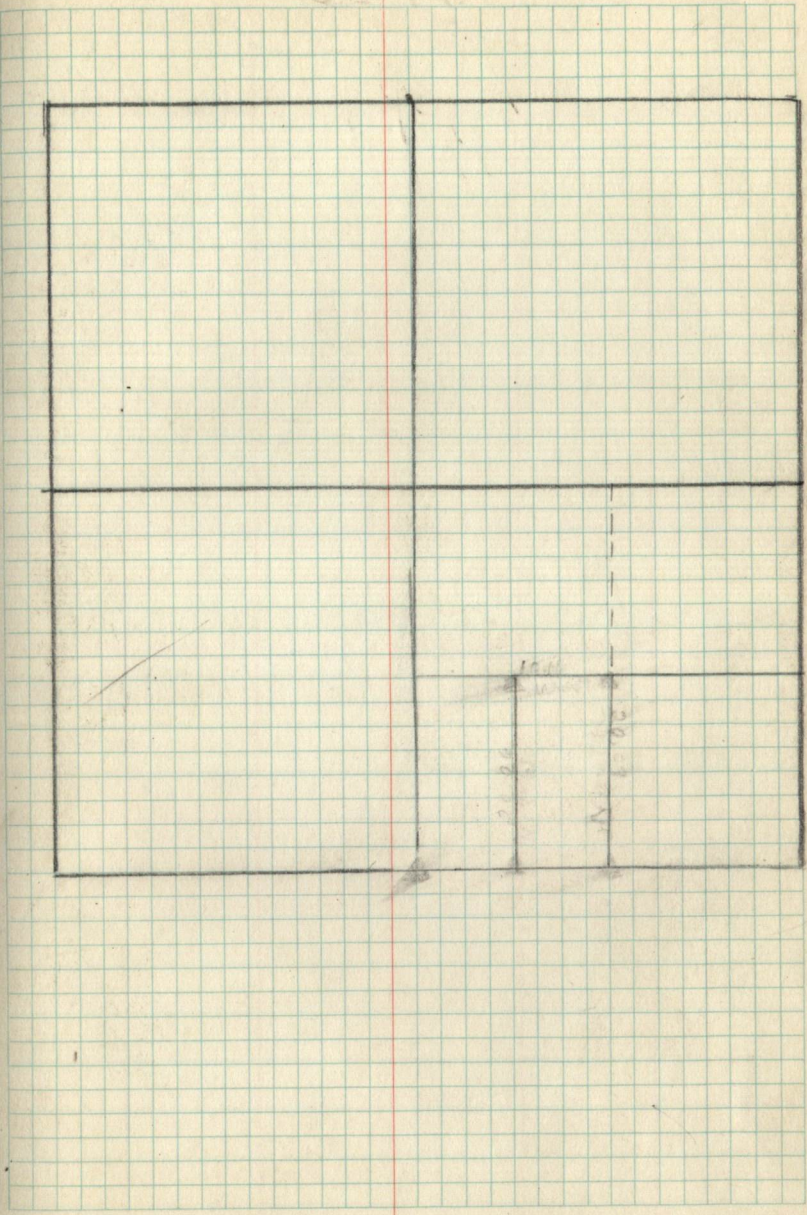
1/64 ✓ Between #12 + #13 1/16, GLO 1" IM + brass cap
5.19 8" above ground,

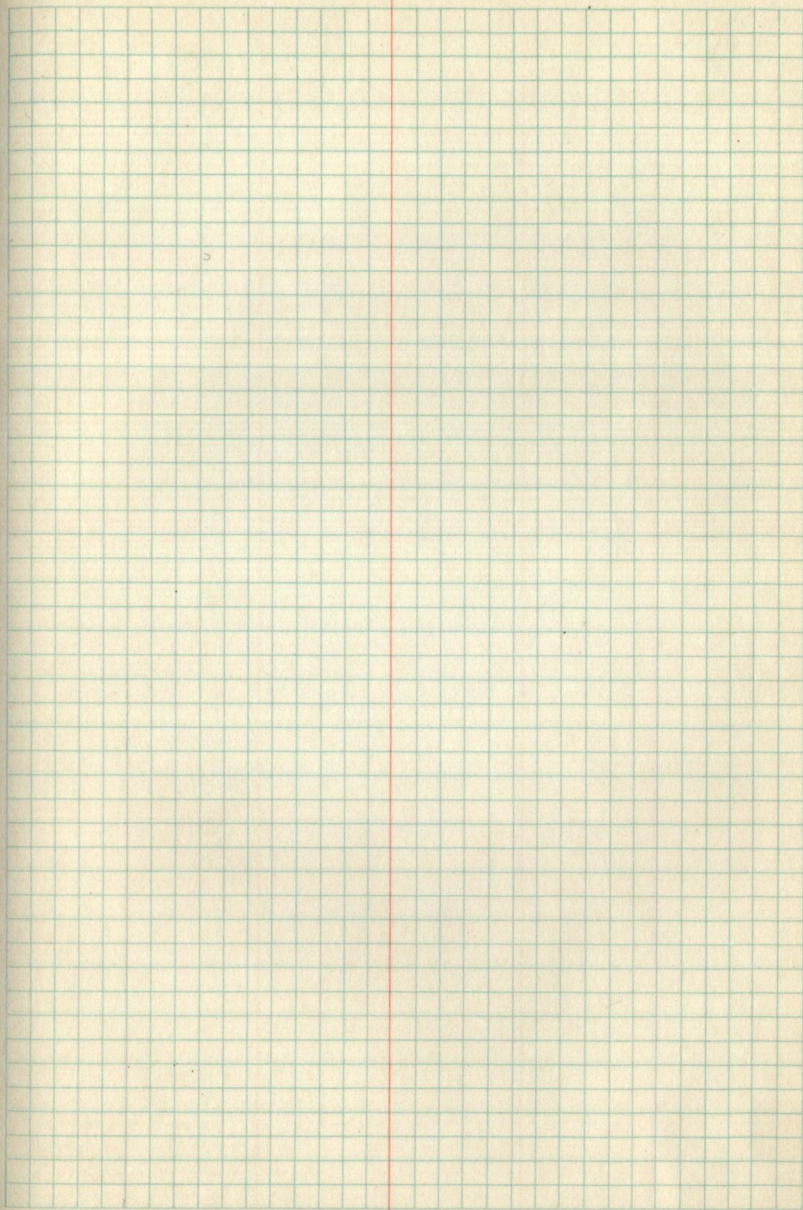
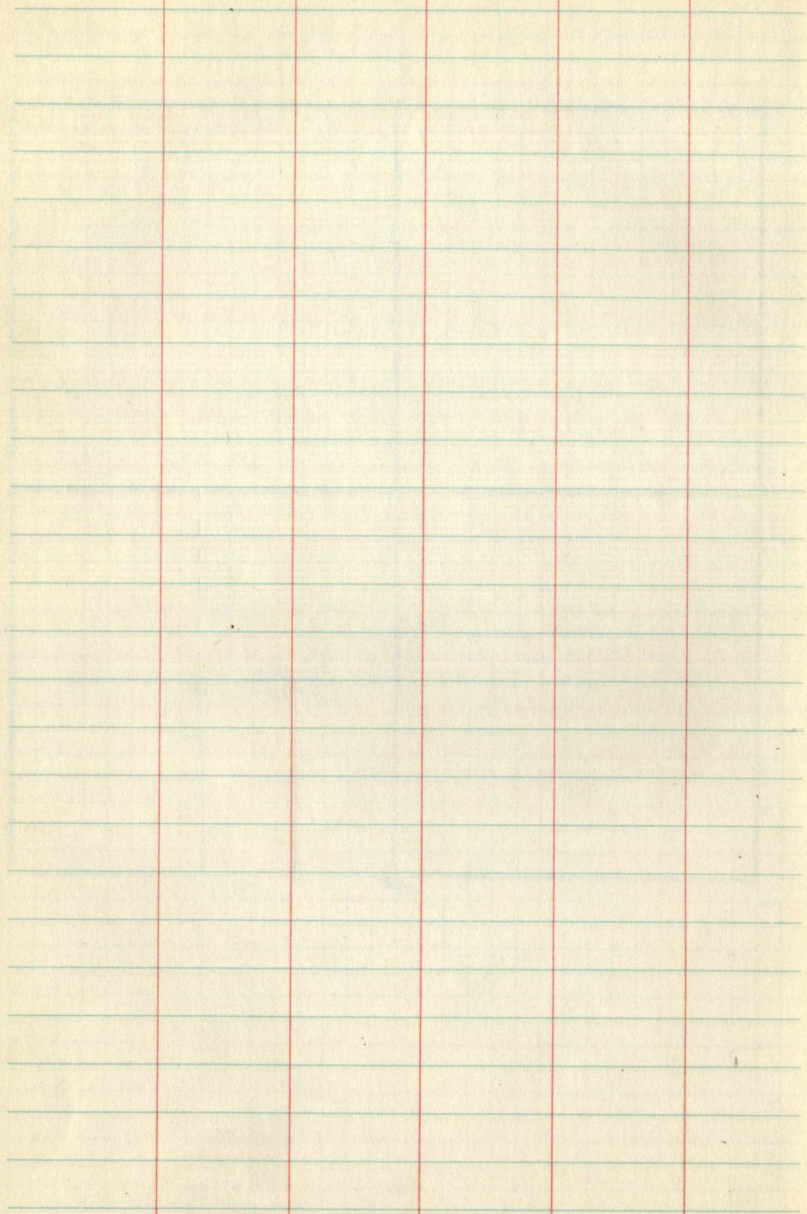
1/64 ✓ Between #15 1/16 + 1/4 19/30, GLO 1" IM + brass cap
519 8" above ground

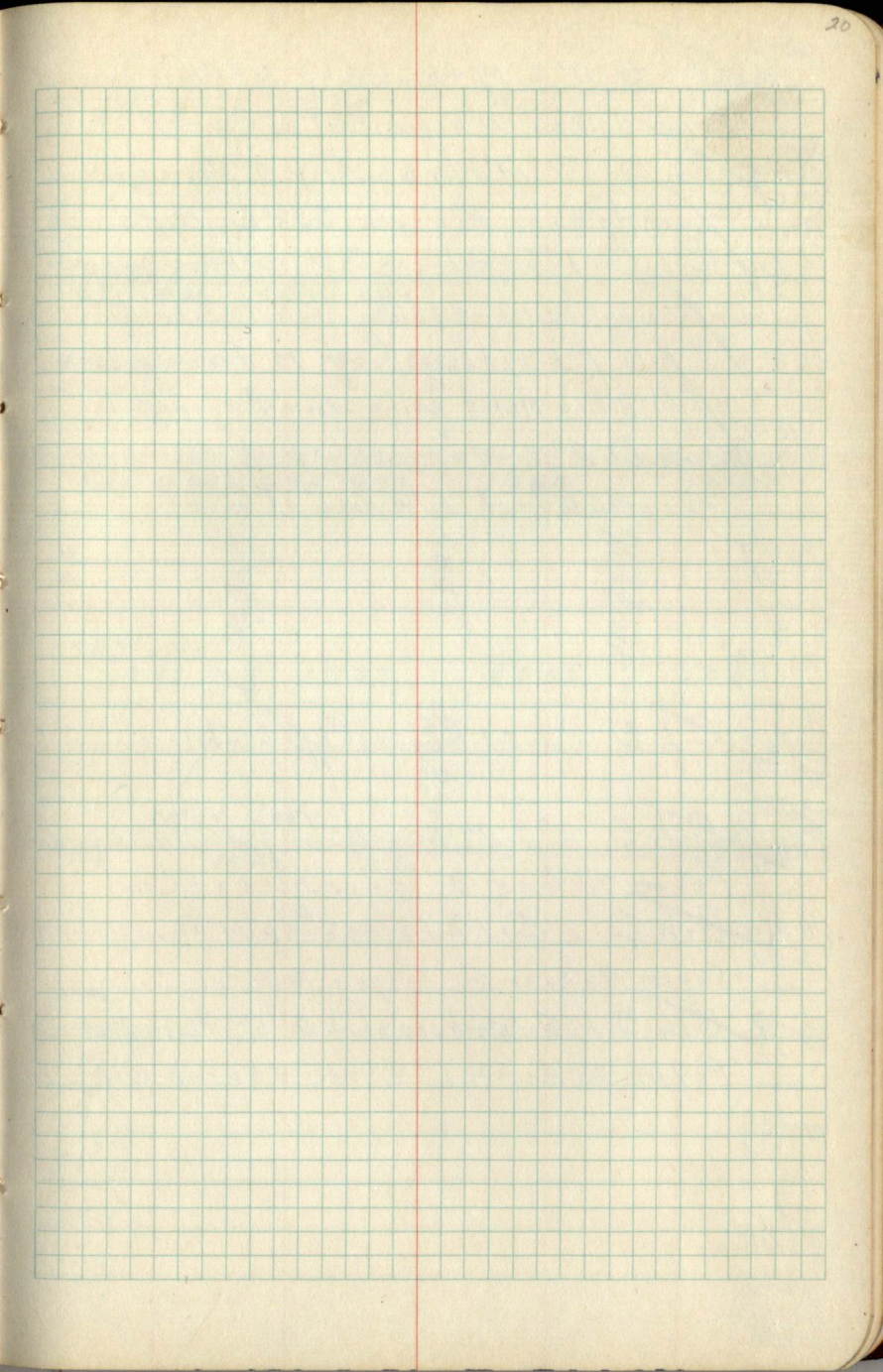
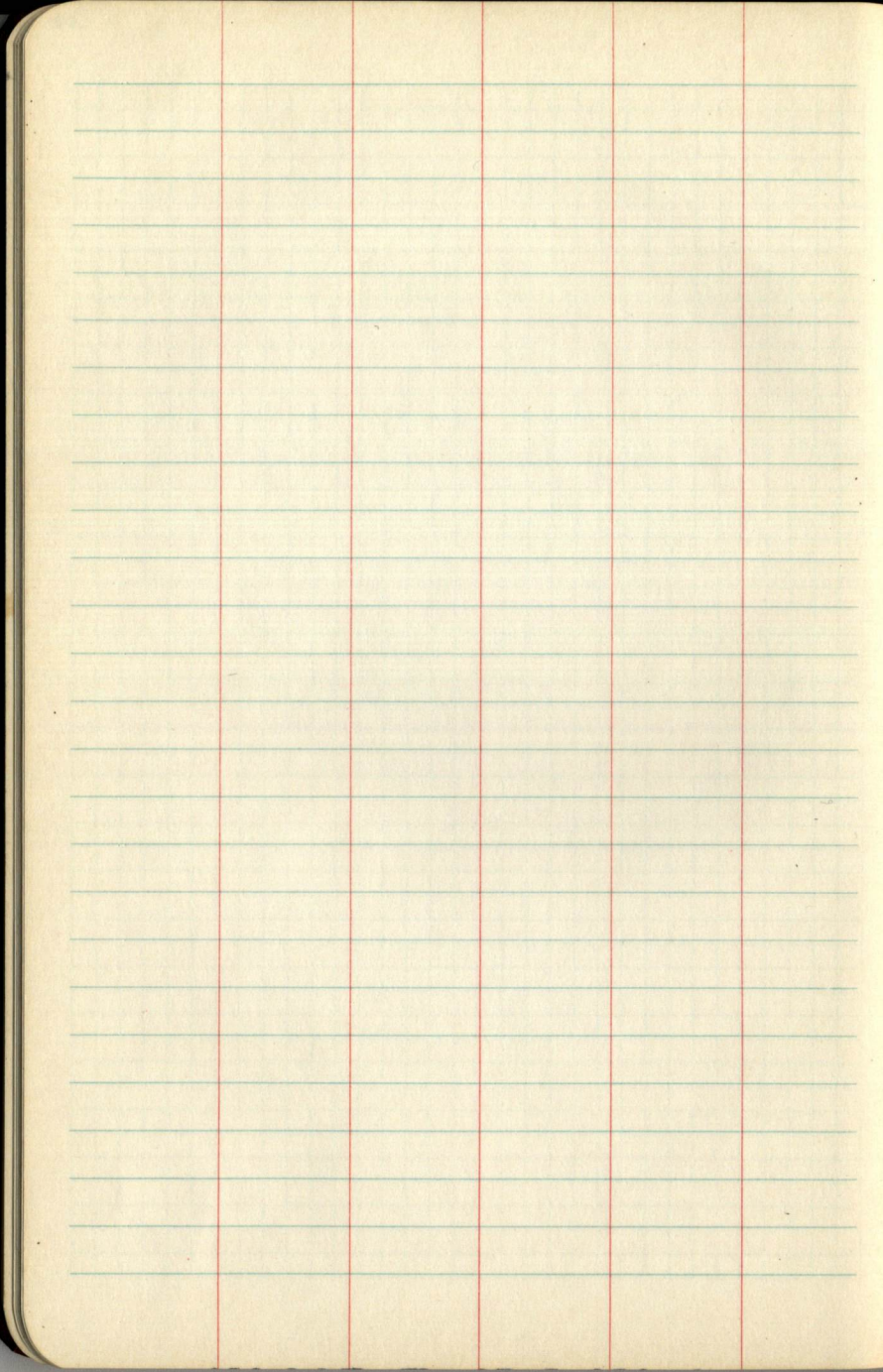
1/4 519 See Section 30,
530



Sec 19







1/2 #13
17/19
20/21

G.L.O. 2" I.M. & brass Cap 10" Above ground
Form 458 on 4" Aspen Post at Corner

1/6 #9
5.21

G.L.O. 1" I.M. & brass Cap 7" Above ground
Form 458 on 8" Aspen 532° E. 171ks.

1/4 #2
21/21

G.L.O. 1" I.M. & brass Cap 12" Above ground
B.T. 29" W. Pine N24° E 381ks. Form 458 on B.T.

1/6 #1
5.21

G.L.O. 1" I.M. & brass Cap 14" Above ground
B.T. 19" R. Pine N61° E 841ks. Form 458 on B.T.

1/2 #13
16/19
21/22

G.L.O. 2" I.M. & brass Cap 12" Above ground
Form 458 on 4" Elm Post at Corner

1/6 #7
5.21

1/4
21/22

1/6 #19
5.21

G.L.O. 1" I.M. & brass Cap 8" Above ground.

1/2 #13
21/22

G.L.O. 2" I.M. & brass Cap 10" Above ground
Form 458 on 3" Cedar Post at Cor.

1/6 #15
5.21

G.L.O. 1" I.M. & brass Cap 14" Above ground
Form 458 on 8" Aspen N39° W. 71ks.

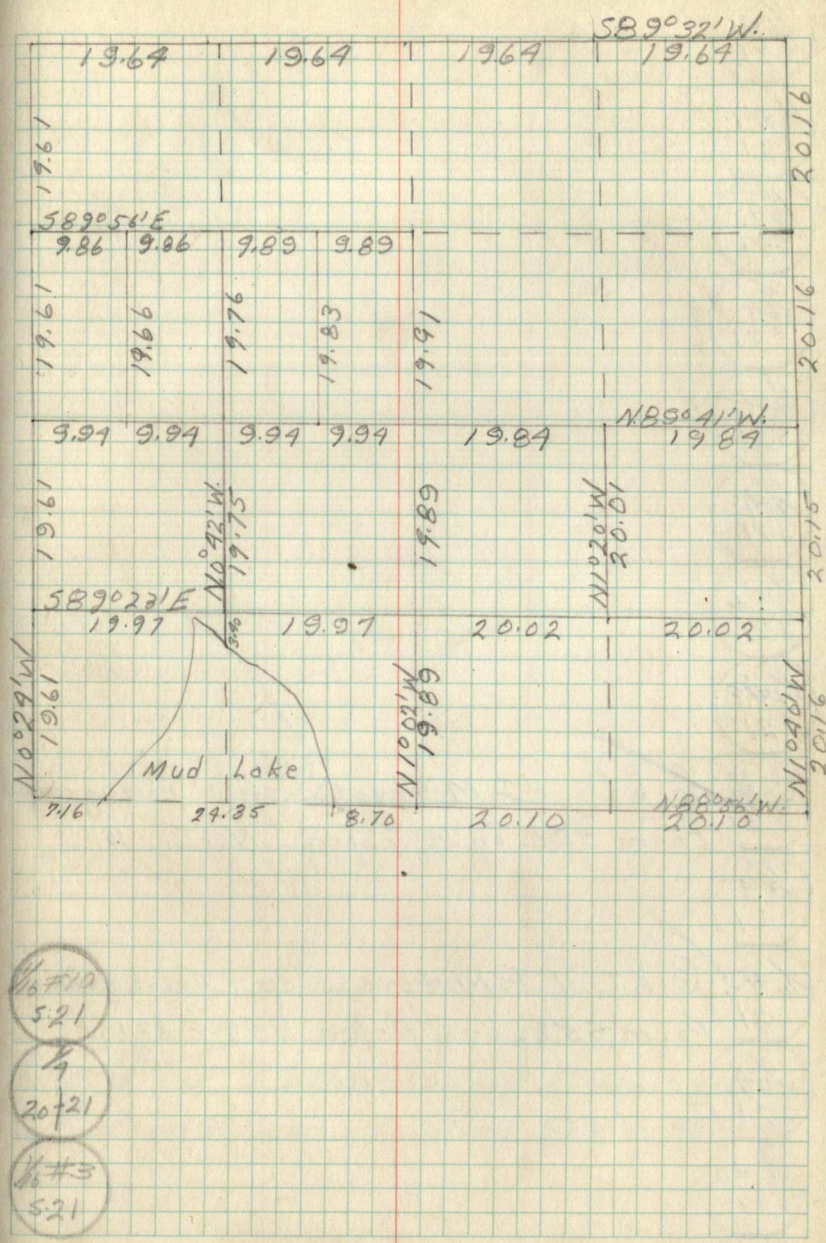
1/4 #2
21/28

G.L.O. 1" I.M. & brass Cap 5" Above ground
Form 458 on 6" R. Pine N58° W 141ks.

19/21
28

21/28/MC

1/2 #13
20/21
21/28



1/6 #10
5.21

1/4
20/21

1/6 #3
5.21

1/69
5.21

1/6#9
5.21

1/69
5.21

1/69
5.21

1/6#5
5.21

1/69
5.21

1/6#6
5.21

1/6#8
5.21

~~C.K.~~ G.L.O. 1" I.M. & brass Cap 6" Above ground
5.21 Form 958a on 14" Aspen North 101ks

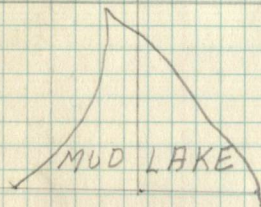
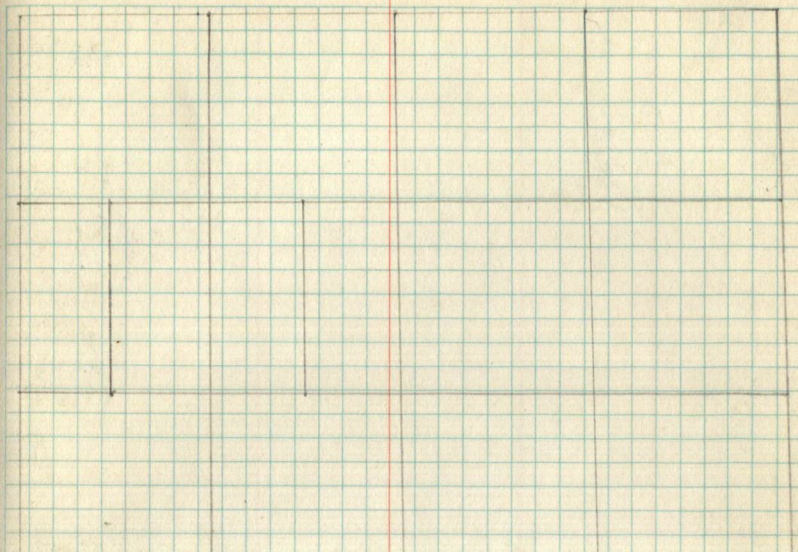
1/69
5.21

~~1/6#3~~ G.L.O. 1" I.M. & brass Cap 4" Above ground
5.21 Form 958a on 6" Aspen N. 98° E. 221ks

1/69
5.21

1/6#11
5.21

S.M.C
5.21



~~1/6#12~~ G.L.O. 1" I.M. & brass Cap 5" Above ground
5.21 Form 958a on 14" R. Pine 523° W 381ks.

1/6#13
5.21

Pages 22-27
are Blank

221
26/27
27/28

21
28/M.C.

M.C./21
28

1/2 ✓ G.l.O. 1" I.M. & brass Cap 5" Above ground
Form 958 on 6" R. Pine N58°W. 191ks

1/6 #1 ✓ G.l.O. 1" I.M. & brass Cap 14" Above ground
Form 958 on 8" Aspen N34°W. 71ks

1/2 ✓ G.l.O. 2" I.M. & brass Cap 10" Above ground
Form 958 on 3" Aspen Post. at Corner

1/6 #9 ✓ G.l.O. 1" I.M. & brass Cap 6" Above ground
Form 958 on 4" Tamarock N59°E. 81ks

1/4 ✓ G.l.O. 1" I.M. & brass Cap 4" Above ground
Form 958 on 10" Aspen N5°W. 71ks

1/6 #14 ✓ F.S. Approx. 4" X 3' Aspen Post
Form 958 on Fence Post. S.70°E. 20ks

221
28/27
33/34

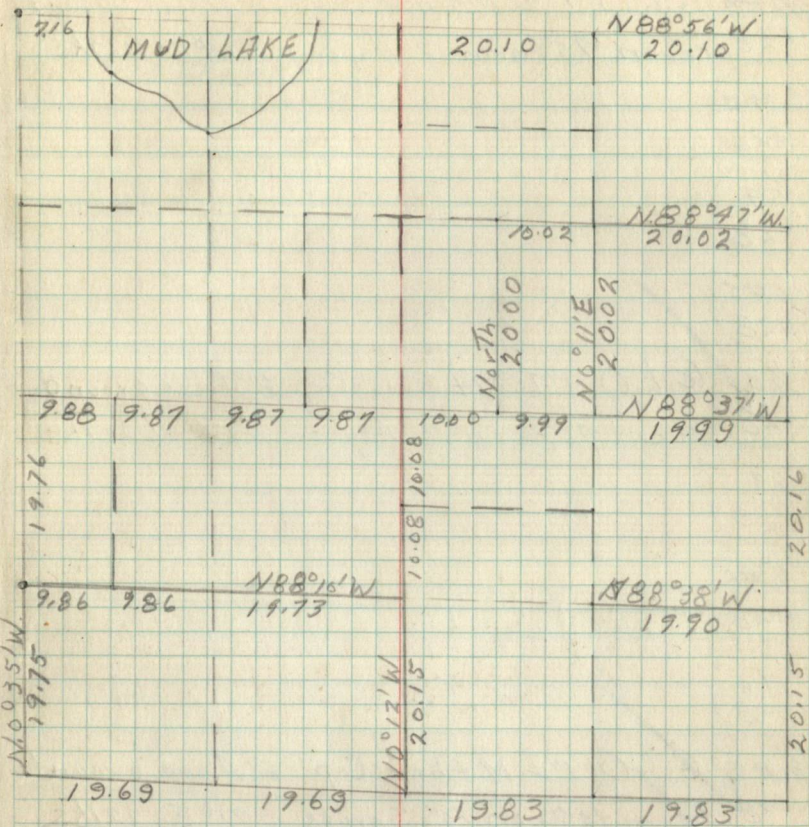
1/6 #15 ✓ F.S. Approx. 4" X 3' Aspen Post
Form 958 on 6" Cedar S62°E 24ks

1/4 28
33

1/6 #16
5.28

1/2 ✓ F.S. Approx. 3" Aspen post. G.l.O. buried in road
Form 958 on location post North 161ks

221
29/28
32/33



1/6 #3 ✓ G.l.O. 1" I.M. & brass Cap 8" Above ground
Form 958 on 10" Cedar N57°E 11ks.

1/4 ✓ G.l.O. 1" I.M. & brass Cap 4" Above ground
Form 958 on 14" R. Pine N13°E 42ks.

1/6 #3
5.28

1/4
5.28

H.M.C.
5.28

1/6 #4 G.h.O. 1" I.M. + brass Cap 8" Above ground.
528 Form 458a on 12" Aspen S. 13° E. 25 lks.

S.M.C.
528

1/6 4
528

1/6 #5
528

1/6 #4 G.h.O. 1" I.M. + brass Cap 8" Above ground
528 Form 458a on 10" Aspen N 58° W. 25 lks.

1/6 4
528

1/6 #6
528

1/6 4
528

1/6 #8 G.h.O. 1" I.M. + brass Cap 6" Above ground.
528 Form 458a on 10" Spruce S. 71° E. 22 lks.

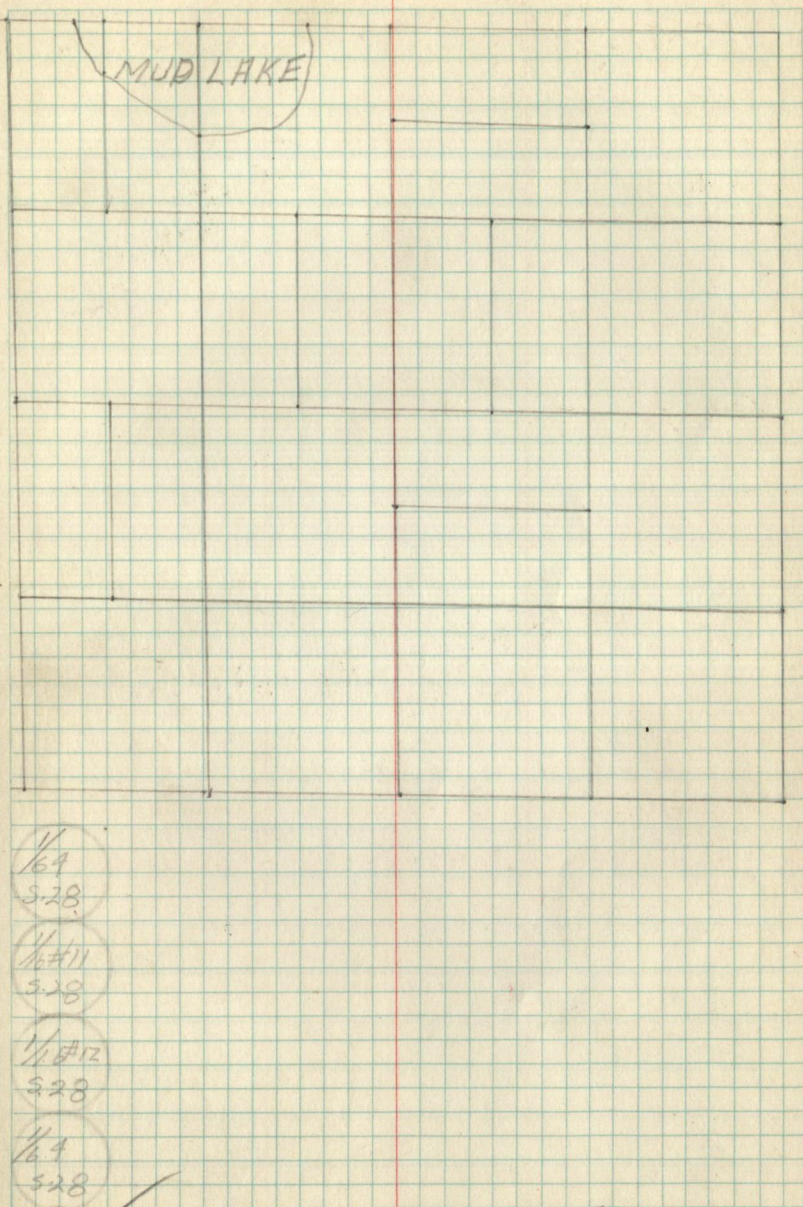
1/6 #A G.h.O. 1" I.M. + brass Cap 6" Above ground
528 Form 458a on 10" Aspen N. 92° W. 19 lks.

C/4
528.

1/6 4
528

1/6 #9 F.S. Approx. G.h.O. buried in Road.
528 Form 458a on Fence Post Nor. 30 lks.

1/6 4
528



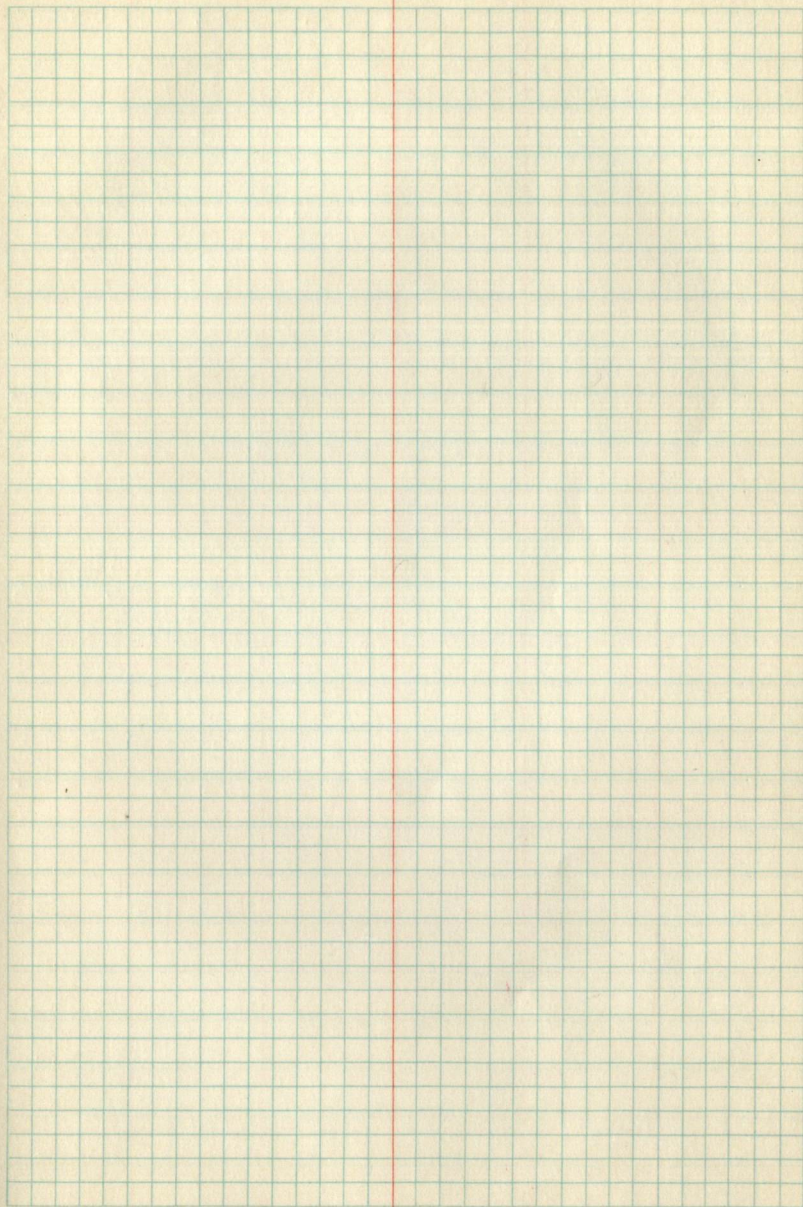
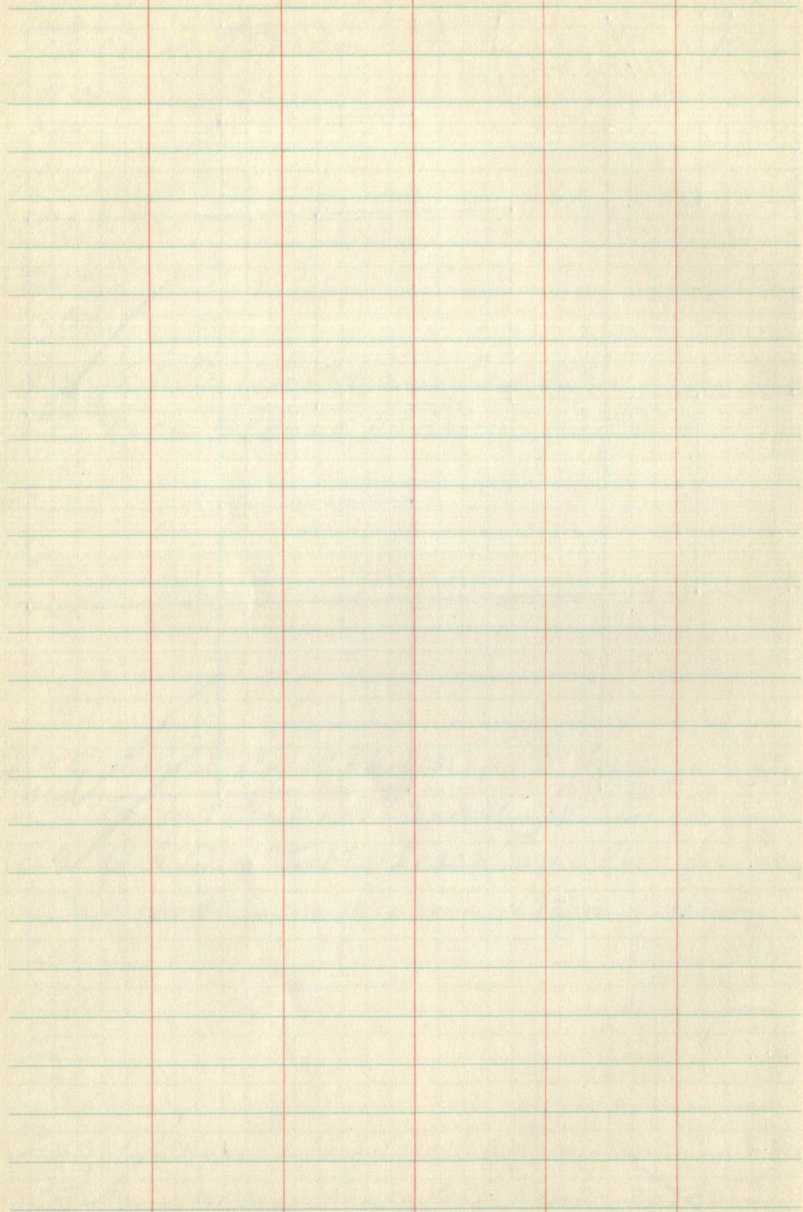
1/6 4
528

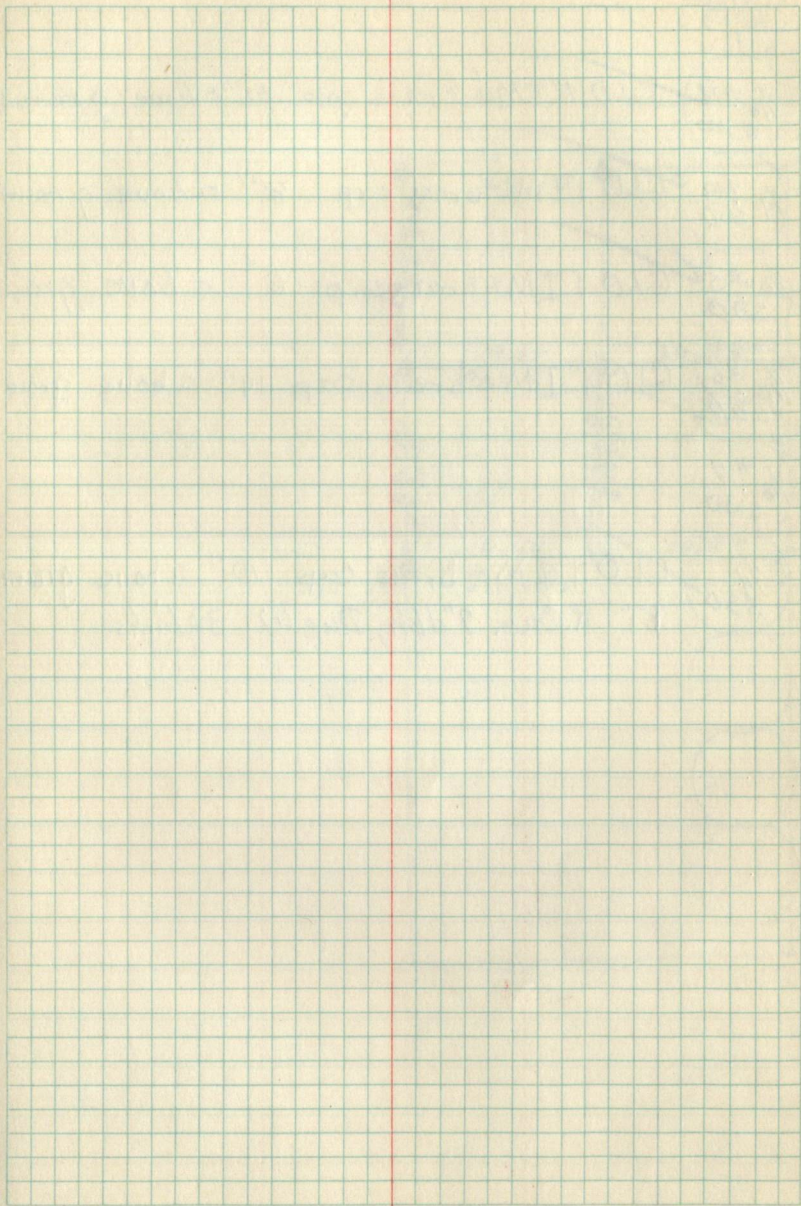
1/6 #11
528

1/6 #12
528

1/6 4
528

1/6 #10 F.S. Approx. 9" x 3" Aspen Post
528 Form 458a on 8" Cedar N 90° W 15 lks.





MIRN R30W
19|20
30|29

$\frac{1}{16}$ #1 ✓ GLO 1" IM + brass cap 10" above ground
S-30

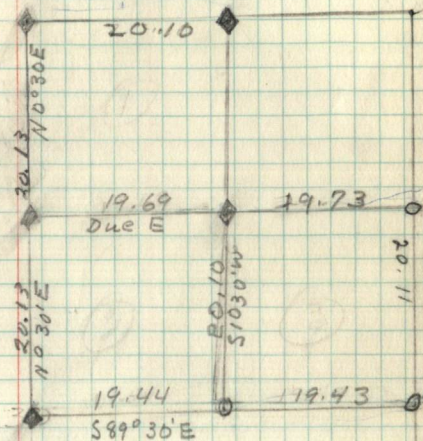
$\frac{1}{4}$ S19 ✓ GLO 1" IM + brass cap 8" above ground
S30

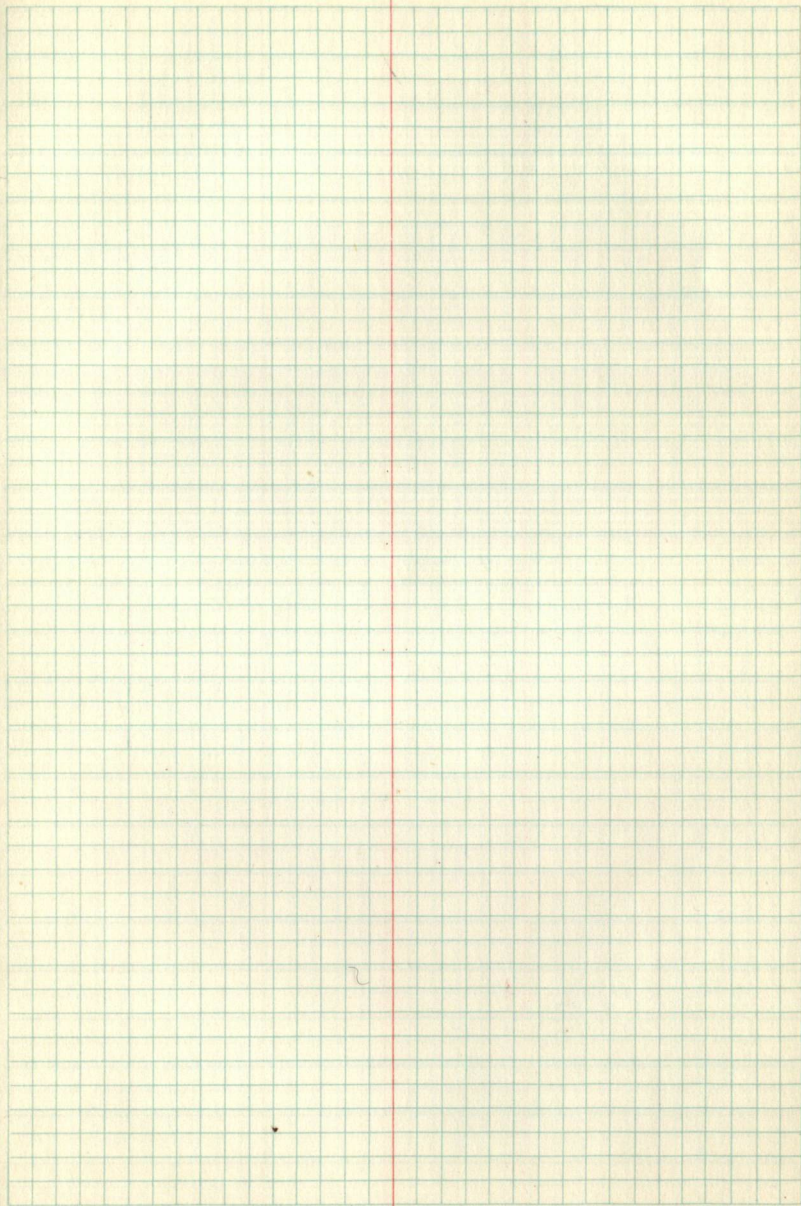
$\frac{1}{16}$ #5 ✓ GLO 1" IM + brass cap 6" above ground
S30

$\frac{1}{16}$ #6 ✓ GLO 1" IM + brass cap 14" above ground
S30

$\frac{1}{16}$ #7
S-30

C $\frac{1}{4}$ ✓ GLO 1" IM + brass cap 10" above ground
S30
BT R.Oak 7" dbh, Due W 30 links





Pages 31-End
are Blank