

FIELD  
141-30

MINUTE  
DIARY BOOK

ccc 4



TABLES FOR EXCAVATIONS AND EMBANKMENTS.

DISTANCES FROM CENTER OF ROADWAY FOR CROSS-SECTIONING  
ROADWAY 18 FEET WIDE. SIDE SLOPES 1 TO 1.  
FOR SINGLE TRACK EXCAVATION.

	0	.1	.2	.3	.4	.5	.6	.7	.8	.9	
0	9.0	9.1	9.2	9.3	9.4	9.5	9.6	9.7	9.8	9.9	0
1	10.0	10.1	10.2	10.3	10.4	10.5	10.6	10.7	10.8	10.9	1
2	11.0	11.1	11.2	11.3	11.4	11.5	11.6	11.7	11.8	11.9	2
3	12.0	12.1	12.2	12.3	12.4	12.5	12.6	12.7	12.8	12.9	3
4	13.0	13.1	13.2	13.3	13.4	13.5	13.6	13.7	13.8	13.9	4
5	14.0	14.1	14.2	14.3	14.4	14.5	14.6	14.7	14.8	14.9	5
6	15.0	15.1	15.2	15.3	15.4	15.5	15.6	15.7	15.8	15.9	6
7	16.0	16.1	16.2	16.3	16.4	16.5	16.6	16.7	16.8	16.9	7
8	17.0	17.1	17.2	17.3	17.4	17.5	17.6	17.7	17.8	17.9	8
9	18.0	18.1	18.2	18.3	18.4	18.5	18.6	18.7	18.8	18.9	9
10	19.0	19.1	19.2	19.3	19.4	19.5	19.6	19.7	19.8	19.9	10
11	20.0	20.1	20.2	20.3	20.4	20.5	20.6	20.7	20.8	20.9	11
12	21.0	21.1	21.2	21.3	21.4	21.5	21.6	21.7	21.8	21.9	12
13	22.0	22.1	22.2	22.3	22.4	22.5	22.6	22.7	22.8	22.9	13
14	23.0	23.1	23.2	23.3	23.4	23.5	23.6	23.7	23.8	23.9	14
15	24.0	24.1	24.2	24.3	24.4	24.5	24.6	24.7	24.8	24.9	15
16	25.0	25.1	25.2	25.3	25.4	25.5	25.6	25.7	25.8	25.9	16
17	26.0	26.1	26.2	26.3	26.4	26.5	26.6	26.7	26.8	26.9	17
18	27.0	27.1	27.2	27.3	27.4	27.5	27.6	27.7	27.8	27.9	18
19	28.0	28.1	28.2	28.3	28.4	28.5	28.6	28.7	28.8	28.9	19
20	29.0	29.1	29.2	29.3	29.4	29.5	29.6	29.7	29.8	29.9	20
21	30.0	30.1	30.2	30.3	30.4	30.5	30.6	30.7	30.8	30.9	21
22	31.0	31.1	31.2	31.3	31.4	31.5	31.6	31.7	31.8	31.9	22
23	32.0	32.1	32.2	32.3	32.4	32.5	32.6	32.7	32.8	32.9	23
24	33.0	33.1	33.2	33.3	33.4	33.5	33.6	33.7	33.8	33.9	24
25	34.0	34.1	34.2	34.3	34.4	34.5	34.6	34.7	34.8	34.9	25
26	35.0	35.1	35.2	35.3	35.4	35.5	35.6	35.7	35.8	35.9	26
27	36.0	36.1	36.2	36.3	36.4	36.5	36.6	36.7	36.8	36.9	27
28	37.0	37.1	37.2	37.3	37.4	37.5	37.6	37.7	37.8	37.9	28
29	38.0	38.1	38.2	38.3	38.4	38.5	38.6	38.7	38.8	38.9	29
30	39.0	39.1	39.2	39.3	39.4	39.5	39.6	39.7	39.8	39.9	30
31	40.0	40.1	40.2	40.3	40.4	40.5	40.6	40.7	40.8	40.9	31
32	41.0	41.1	41.2	41.3	41.4	41.5	41.6	41.7	41.8	41.9	32
33	42.0	42.1	42.2	42.3	42.4	42.5	42.6	42.7	42.8	42.9	33
34	43.0	43.1	43.2	43.3	43.4	43.5	43.6	43.7	43.8	43.9	34
35	44.0	44.1	44.2	44.3	44.4	44.5	44.6	44.7	44.8	44.9	35
36	45.0	45.1	45.2	45.3	45.4	45.5	45.6	45.7	45.8	45.9	36

141-30  
Scanned  
July 10, 2012  
Ronney



South 7° West .55



30,965 To  $\Delta$  No 1.  
 21,075 To V.C. (OLD)

65	113	12	1
75	104	11	
85	96	10	
95	88	9	
105	80	8	
115	72	7	
125	64	6	
135	56	5	
145	48	4	
155	40	3	
165	32	2	
175	24	1	

67 1/2  
 5  
 4  
 49.6  
 5.00  
 20.18  
 20.18  
 20.18  
 16.52  
 77.36



80.15  
 79.52  
 79.26  
 79.22  
 68  
 11 80.30  
 10.00  
 20.09  
 01

DISTANCES FROM CENTER OF ROADWAY FOR CROSS-SECTIONING.  
 ROADWAY 14 FEET WIDE. SIDE SLOPES 1 1/2 TO 1.  
 FOR SINGLE TRACK EMBANKMENT.

	0	.1	.2	.3	.4	.5	.6	.7	.8	.9	
0	7.0	7.2	7.3	7.5	7.6	7.8	7.9	8.1	8.2	8.4	0
1	8.5	8.7	8.8	9.0	9.1	9.3	9.4	9.6	9.7	9.9	1
2	10.0	10.2	10.3	10.5	10.6	10.8	10.9	11.1	11.2	11.4	2
3	11.5	11.7	11.8	12.0	12.1	12.3	12.4	12.6	12.7	12.9	3
4	13.0	13.2	13.3	13.5	13.6	13.8	13.9	14.1	14.2	14.4	4
5	14.5	14.7	14.8	15.0	15.1	15.3	15.4	15.6	15.7	15.9	5
6	16.0	16.2	16.3	16.5	16.6	16.8	16.9	17.1	17.2	17.4	6
7	17.5	17.7	17.8	18.0	18.1	18.3	18.4	18.6	18.7	18.9	7
8	19.0	19.2	19.3	19.5	19.6	19.8	19.9	20.1	20.2	20.4	8
9	20.5	20.7	20.8	21.0	21.1	21.3	21.4	21.6	21.7	21.9	9
10	22.0	22.2	22.3	22.5	22.6	22.8	22.9	23.1	23.2	23.4	10
11	23.5	23.7	23.8	24.0	24.1	24.3	24.4	24.6	24.7	24.9	11
12	25.0	25.2	25.3	25.5	25.6	25.8	25.9	26.1	26.2	26.4	12
13	26.5	26.7	26.8	27.0	27.1	27.3	27.4	27.6	27.7	27.9	13
14	28.0	28.2	28.3	28.5	28.6	28.8	28.9	29.1	29.2	29.4	14
15	29.5	29.7	29.8	30.0	30.1	30.3	30.4	30.6	30.7	30.9	15
16	31.0	31.2	31.3	31.5	31.6	31.8	31.9	32.1	32.2	32.4	16
17	32.5	32.7	32.8	33.0	33.1	33.3	33.4	33.6	33.7	33.9	17
18	34.0	34.2	34.3	34.5	34.6	34.8	34.9	35.1	35.2	35.4	18
19	35.5	35.7	35.8	36.0	36.1	36.3	36.4	36.6	36.7	36.9	19
20	37.0	37.2	37.3	37.5	37.6	37.8	37.9	38.1	38.2	38.4	20
21	38.5	38.7	38.8	39.0	39.1	39.3	39.4	39.6	39.7	39.9	21
22	40.0	40.2	40.3	40.5	40.6	40.8	40.9	41.1	41.2	41.4	22
23	41.5	41.7	41.8	42.0	42.1	42.3	42.4	42.6	42.7	42.9	23
24	43.0	43.2	43.3	43.5	43.6	43.8	43.9	44.1	44.2	44.4	24
25	44.5	44.7	44.8	45.0	45.1	45.3	45.4	45.6	45.7	45.9	25
26	46.0	46.2	46.3	46.5	46.6	46.8	46.9	47.1	47.2	47.4	26
27	47.5	47.7	47.8	48.0	48.1	48.3	48.4	48.6	48.7	48.9	27
28	49.0	49.2	49.3	49.5	49.6	49.8	49.9	50.1	50.2	50.4	28
29	50.5	50.7	50.8	51.0	51.1	51.3	51.4	51.6	51.7	51.9	29
30	52.0	52.2	52.3	52.5	52.6	52.8	52.9	53.1	53.2	53.4	30
31	53.5	53.7	53.8	54.0	54.1	54.3	54.4	54.6	54.7	54.9	31
32	55.0	55.2	55.3	55.5	55.6	55.8	55.9	56.1	56.2	56.4	32
33	56.5	56.7	56.8	57.0	57.1	57.3	57.4	57.6	57.7	57.9	33
34	58.0	58.2	58.3	58.5	58.6	58.8	58.9	59.1	59.2	59.4	34
35	59.5	59.7	59.8	60.0	60.1	60.3	60.4	60.6	60.7	60.9	35
36	61.0	61.2	61.3	61.5	61.6	61.8	61.9	62.1	62.2	62.4	36

4000  
 2955  
 49  
 2032  
 1665  
 2031  
 57.26  
 400  
 207  
 117  
 23  
 26  
 98  
 359  
 79  
 159



Pages 001-005A  
are Blank



RAINR302  
16. G. h. O 3" I.M. + brass Cap. Flush with ground  
Township Cor.

RAINR302  
1/6 #2  
5.6

4  
6

RAINR302  
1/6 #1  
5.6

RAINR302  
675

RAINR302  
1/6 #7  
5.6

675  
M.C.

M.C.  
675

4  
675

RAINR302  
1/6 #14  
5.6

RAINR302  
675  
718

RAINR302  
1/6 #15  
5.6

4  
675

RAINR302  
1/6 #16  
5.6

6

RAINR302  
1/6  
17

RAINR302  
1/6 #10  
5.6

4  
76

RAINR302  
1/6 #3  
5.6



1/6 #4 G.h. O 1" I.M. & brass Cap 6" Above ground

S.6

1/6 #5

S.6

S.M.C

S.6

S.M.C.

S.6

S.M.C

S.6

S.M.C

S.6

S.M.C

S.6

1/6 #8

S.6

1/6 #4

S.6

C 1/4

S.6

1/6 #4

S.6

1/6 #9

S.6

1/6 #1

S.6

1/6 #2

S.6

1/6 #12

S.6

1/6 #4

S.6

1/6 #13

S.6

1/6 #4

S.6







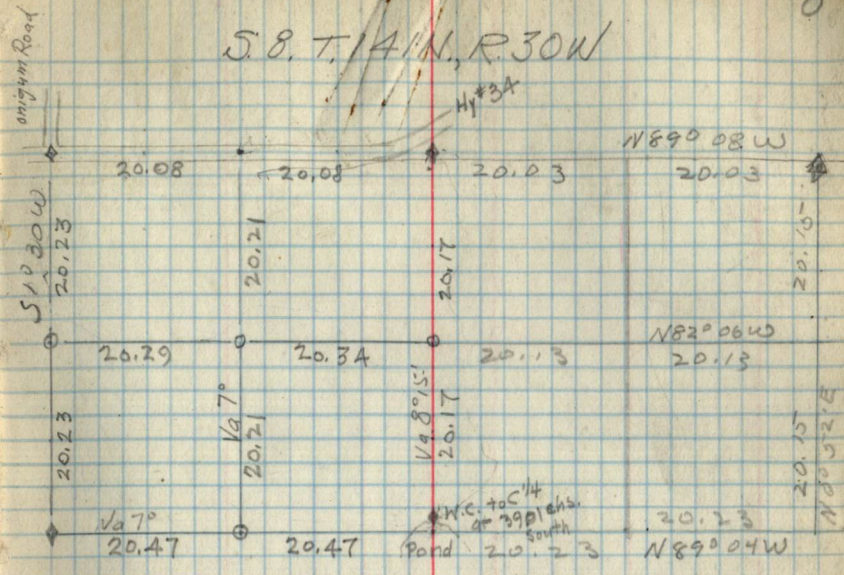




April 1936

8

C 1/4 cor G.L. Corner 12" Above Ground  
 1/4 5 G.L. Corner 10" Above Ground  
 5/15 58/59 G.L. Corner 14" Above Ground  
 N 1/4 8 G.L. Corner 8" Above Ground  
 1/4 cor 8/9 G.L. Corner 6" Above Ground

















RAIN 8302  
113  
9/10

1/6 #2  
5.10

1/4 3  
10

1/6 #1  
5.10

RAIN 8302  
113  
10/11

1/6 #7  
5.10

1/4  
10 + 11

1/6 #14  
5.10

RAIN 8302  
113  
15/14

1/6 #15  
5.10

1/4 10  
15

1/6 #16  
5.10

G.L.O 1" I.M & brass Cap 10" Above ground  
Form 458 on 8" J. Pine 59°W 91ks.

RAIN 8302  
113  
16/15

G.L.O 2" I.M & brass Cap 1" Above ground  
Form 458 on 6" J. Pine 51°E 66ks.



1/6 #10  
S, 10

1/4  
9+10

1/6 #3  
S, 10

1/6 #4  
S, 10

1/6 #5 G.L. 0 1" I.M. & brass Cap 6" Above ground  
S, 10 Form 958a on 6" R. Pine S 79° W 361 ks.

1/6 #4 G.L. 0 1" I.M. & brass Cap 10" Above ground  
S, 10 Form 958a on 6" W. Oak S. 98° E. 91 ks

1/6 #6 G.L. 0 1" I.M. & brass Cap 5" Above ground  
S, 10 Form 958a on 12" J. Pine N 38° E 191 ks.

1/6 #7 G.L. 0 1" I.M. & brass Cap 5" Above ground  
S, 10 Form 958a on 8" J. Pine N 50° W 97 ks

1/6 #8 G.L. 0 1" I.M. & brass Cap 3" Above ground  
S, 10 Form 958a on 5" Aspen N 76° E 11 ks

C/4 #9 G.L. 0 1" I.M. & brass Cap 2" Above ground  
S, 10 Form 958a on 7" R. Pine S 33° W 101 ks

1/6 #9  
S, 10

1/6 #11  
S, 10

1/6 #12 G.L. 0 1" I.M. & brass Cap 7" Above ground  
S, 10 Form 958a on 10" R. Pine S. 57° W. 91 ks

1/6 #13 G.L. 0 1" I.M. & brass Cap 7" Above ground  
S, 10 Form 958a on 10" J. Pine N 49° W 281 ks



111  
Pages 011-015A  
are Blank



RAIN R304  
819  
17176

1/16 #2  
5.16

1/4 9  
76

1/16 #1  
5.16

RAIN R304  
9110  
16115

1/16 #7  
5.16

1/16 #15

I.R.B.  
16x15

RAIN R304  
10115  
21122

1/16 #15  
5.16

1/4 16  
21

1/16 #16  
5.16

RAIN R304  
11110  
22121

I.R.B.  
17x16

G.L.O. 2" I.M. & brass Cap 1" Above ground  
Form 458 on 6" Spruce S. 11° E. 66 lbs.

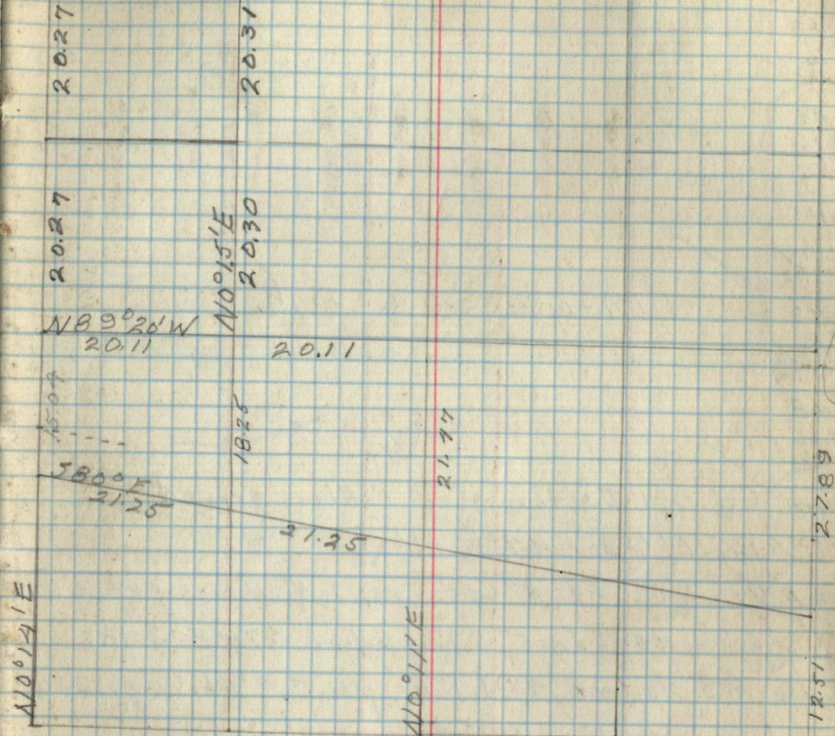
G.L.O. 1" I.M. & brass Cap. 2" Above ground  
Form 458 on 5" Aspen N. 79° W. 28 lbs.

G.L.O. 1" I.M. & brass cap 6" Above ground  
Form 458 on 8" Aspen S. 23° E. 7 lbs.

(Approx) 36" Pine cor.  
Form 458 on 8" Spruce 85 lbs N 25° E of cor.

F.S. Approx. Cedar post 4" high.

Sec. 16-141-30  
N 89° 35' W  
2008





✓  
1/4 #10 G.L.O. 1" I.M. + brass Cap 5" high  
B.T. 8" Cedar STub 9" high S50°W 5.91ks.

1/6 #3  
S.16

1/6 #4  
S.16

1/6 #5  
S.16

✓  
1/6 #6 G.L.O. 1" I.M. + brass cap 6" high.  
S.16

1/6 #8  
S.16

✓  
1/6 #9 G.L.O. 1" I.M. + brass Cap. 1" Above ground.  
S.16 B.T. 6" Cedar N4°W 31ks

1/6 #11 F.S. Approx. 3" Cedar post 4' Above ground  
S.16 Form 458 on 5" Balmet G/lead S.78°E. 301ks.

1/6 #12 F.S. Approx. 7" J. Pine post 4' Above ground  
S.16 Form 458 on 6" J. Pine N73°W. 111ks.

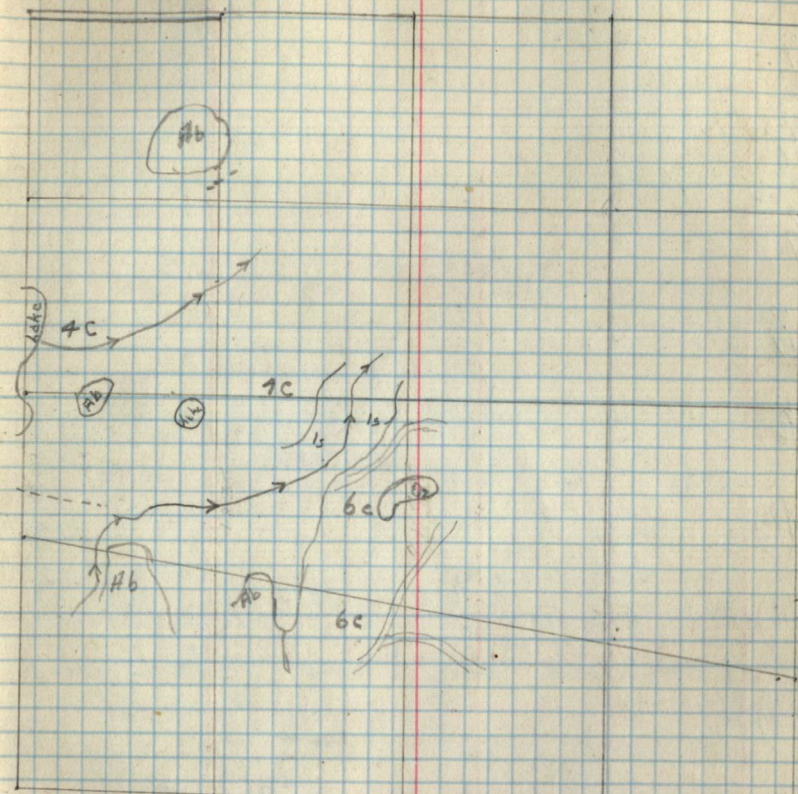
1/6 #13  
S.16

✓  
C/4 G.L.O. 1" I.M. + brass Cap 7" Above ground  
S.16

1/64  
S.16

1/64  
S.16

1/64  
S.16



1/64  
S.16







5/6 #16

5/6 #17

5/6 #17

1/6 #4

1/6 #5

1/6 #6 ✓ 1" I.M.G.L.O. 6" Above ground

1/6 #8 ✓ 1" I.M.G.L.O. 6" Above ground  
Form 458A on 16" Aspen  $510^{\circ}E$  61ks

1/6 #9 ✓ 1" I.M.G.L.O. 12" Above ground  
Form = 458a on 2" Birch  $393^{\circ}W$  151ks.

1/6 #11 ✓ F.S. Approx. 3" Aspen post 4' above ground

1/6 #12 ✓ F.S. Approx. 2" Aspen post 4' above ground

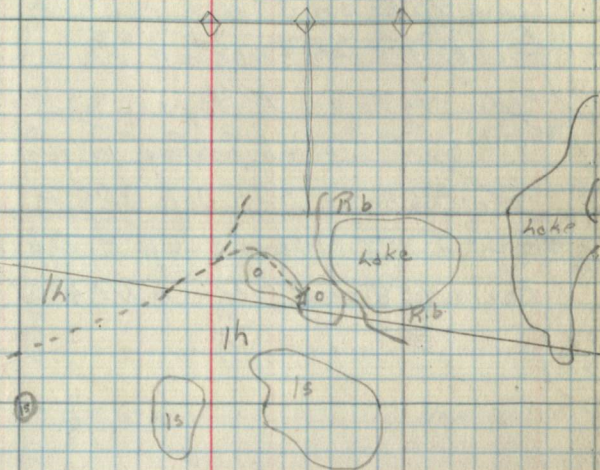
1/6 #13 ✓ F.S. Approx. 3" Birch post 4' above ground.

C/4 ✓ 1" I.M.G.L.O. 8" Above ground  
Form 458a on 6" Oak  $589^{\circ}E$  391ks.

#86 ✓ F.S. Approx. 3" Aspen stake 4' above ground

Sec 17 T. 42 N. R. 20 W.

17



✓ #96 1" I.M.G.L.O. 9" Above ground

✓ Cen. e.c. 1" I.M.G.L.O. 10" Above ground

18/17  
cc

17/16  
c.c.



WINR30  
17/18

1/16 #12 G.L.O. 1" I.M. & brass Cap 10" Above ground  
5.18 Form 458a on 8" Aspen S 56° W 531ks

1/18 G.L.O. 1" I.M. & brass Cap 12" Above ground  
18 Form 458a on 5" Ash N 20° W. 111ks

1/16 #1 G.L.O. 1" I.M. & brass Cap Flush with ground  
5.18 Form 458a on 4" Aspen S 39° E 511ks.

1/16 #4 G.L.O. 1" I.M. & brass Cap 10" Above ground  
5.18 Form 458a on 5" R. Oak S 88° E 171ks.

WINR30  
18/17 G.L.O. 2" I.M. & brass Cap 8" Above ground.  
18/17 Form 458 on 5" Aspen N 86° W 551ks.

1/16 #7  
5.18

1/18  
18/17

I.R.B  
18/17

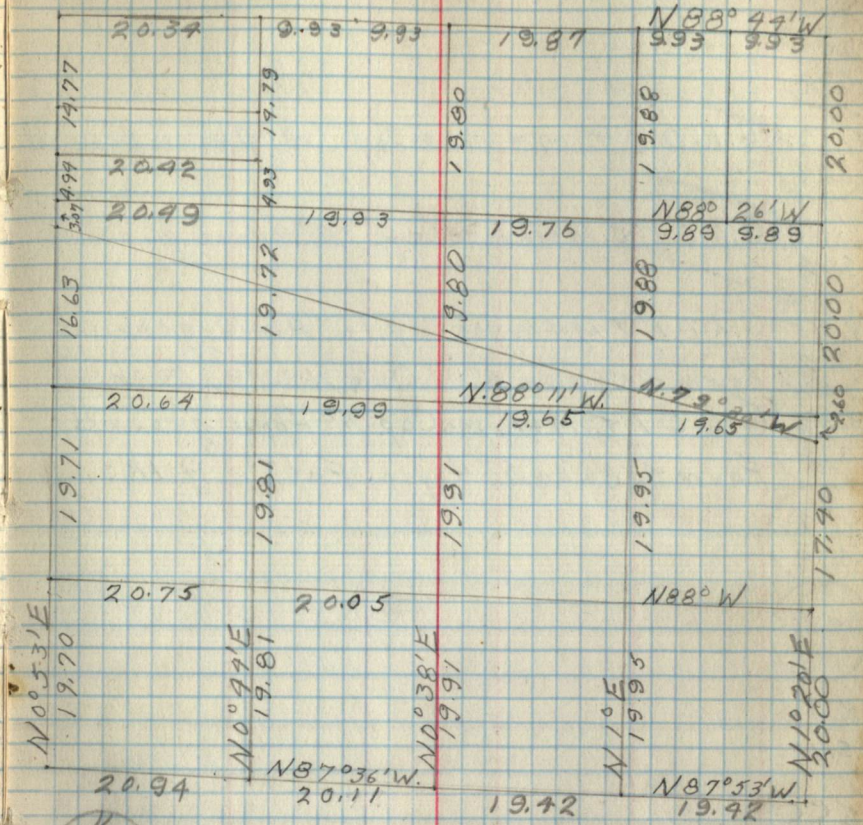
1/16 #14  
5.18

WINR30  
18/17  
19/20

1/16 #15 F.S. 4" Aspen post 4' Above ground  
5.18 Form 458a on fence post West 21ks.

1/18  
1/19

1/16 #16 F.S. 4" Aspen post 4' Above ground  
5.18 Form 458a on fence post West 21ks.



1/18

I.R.B G.L.O. 1" I.M. & brass Cap Flush with ground  
1/18 Form 458a on fence post S 79° E 411ks.

1/16 #3  
5.18

Kr. Cor.  
5.18



1/6A  
5.18

1/6A  
5.18

Tr. Cor G.L.O 1" I.M. + brass Cap 18" Above ground  
5.18

1/6#4 G.L.O 1" I.M. + brass Cap 18" Above ground  
5.18

1/6#5 G.L.O 1" I.M. + brass Cap 6" Above ground  
5.18 Form 458a on 6" W. Oak N33E 30 ks.

1/6#6 G.L.O 1" I.M. + brass Cap 16" Above ground  
5.18 Form 458a on 5" Aspen EAST 9 ks.

1/6A  
5.18

I.R.B.C.C  
5.18

1/6#8  
5.18

E.C.C.  
5.18

C.1/4  
5.18

C.E.C.  
5.18

1/6#9  
5.18

W.C.C.  
5.18

WINKER  
1/6  
1/9

1/6#10  
5.18

1/6#11  
5.18

1/6#12  
5.18

1/6#13  
5.18



Pages 019-021A  
are Blank

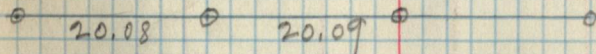


- ~~N<sup>1</sup>/<sub>16</sub> 21 | 22 (APPROX) OAK post 30" above ground. 6/4/39  
 Form 458a set on 10" spruce S28°E 95 lks.  
 21 | 22 (APPROX) Aspen post 36" above ground 6/24/39  
 Form 458 set on 3" Aspen N47W 23 lks.  
 S<sup>5</sup>/<sub>16</sub> 21 | 22 (APPROX) Oak post 36" above ground. 6/24/39  
 Form 458a set on 3" Maple N59°W 34 lks  
 21 | 22 Set 4" Birch Post - 42" above ground - (Approx. Corner)  
 28 | 27 Poster 458 on W. Oak - 6" - S 7W - 0.59 - Troth. 6/24/39  
 12 | 15 Set 4" Red Pine 36" above ground - (Probably G.L.O. Location)  
 21 | 22 Poster 458 on J. Pine 10" - N 26E 0.85 7/19/39  
 1/4 15 | 22 Set Aspen 4" - 36" above ground - (Probably G.L.O. Location)  
 Poster 458 on old W. Pine 5" - N 25E 0.54 chs. 7/19/39  
 W<sup>1</sup>/<sub>16</sub> 11 | 22 Set Wit. Cor. 0.10 chs. North - 4" aspen post.  
 Poster 458 on 4" aspen - N 45 1/2 W 0.24 chs.  
 E<sup>4</sup>/<sub>16</sub> 11 | 22 Set Wit. Corner 0.10 chs. S. of linept.  
 4" aspen post. Poster 458a N 2 3/4 W 0.10 chs. to W. Oak 3"  
 N<sup>1</sup>/<sub>16</sub> 21 | 22 Set 4" Aspen Post 36" above ground - Approx. Corner  
 Poster 458 on R. Oak 7" - S 46 3/4 W - 0.30 chs. 7/14/39 CES  
 1/4 21 | 22 Set 4" Ash Post - 36" above ground - Approx. Corner  
 Poster 458 on R. Oak 10" - S 50 3/4 E 0.14 chs. 7/14/39 CES  
 MC 21 | 22 Set 4" W. Oak Post - 24" above ground - Approx. Corner  
 Poster 458 on Willow - 3" - N 23 1/4 W 0.31 chs. 7/14/39 CES  
 - M.C. is 6.60 chs. S. of 1/4 22 | 23~~



19.78  
 19.77  
 6.60

Home  
 Lake



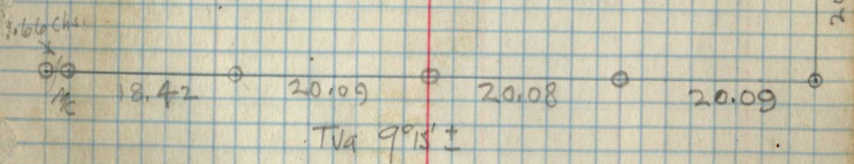






S. 23, T. 141, R. 30

- 1/4 S23/S24 6/5/39 Set a 6" Tame Post 4' above ground  
Poster on 14" Red Pine S80°W 0.86 chs. Marked approximate.
- 23/24 Set 4" Aspen 36" above ground - Approx. corner 6/5/39
- 26/25 Poster on 3" Aspen N64E 0.11 chs. 6/5/39
- S1/12 Set 4" Tame Post 36" above ground - Approx. corner.  
Poster on Post. 6/5/39
- E' 11/26 23/24 Set 3" Birch Post 42" above ground - Approx. Corner  
No B.T. 8/14/39 CES
- 1/4 23/24 Set Aspen 4" 48" above ground Approx. Corner  
Poster on Fence post. S76°W 0.35 chs. 8/16/39 CES
- W 1/4 23/24 Set R. Oak 4" 48" above ground. Approx. Corner.  
Poster on Cherry 3" S32E 0.12 chs. 8/16/39 CES
- MC 23/26 1.46 chs. E. of 23/24. Set Boln Gil. 4" 36" above ground.  
Approx. Cox - Poster on Aspen 4" N12°E 0.53 chs. 8/14/39 CES



40.35  
20.18  
20.18

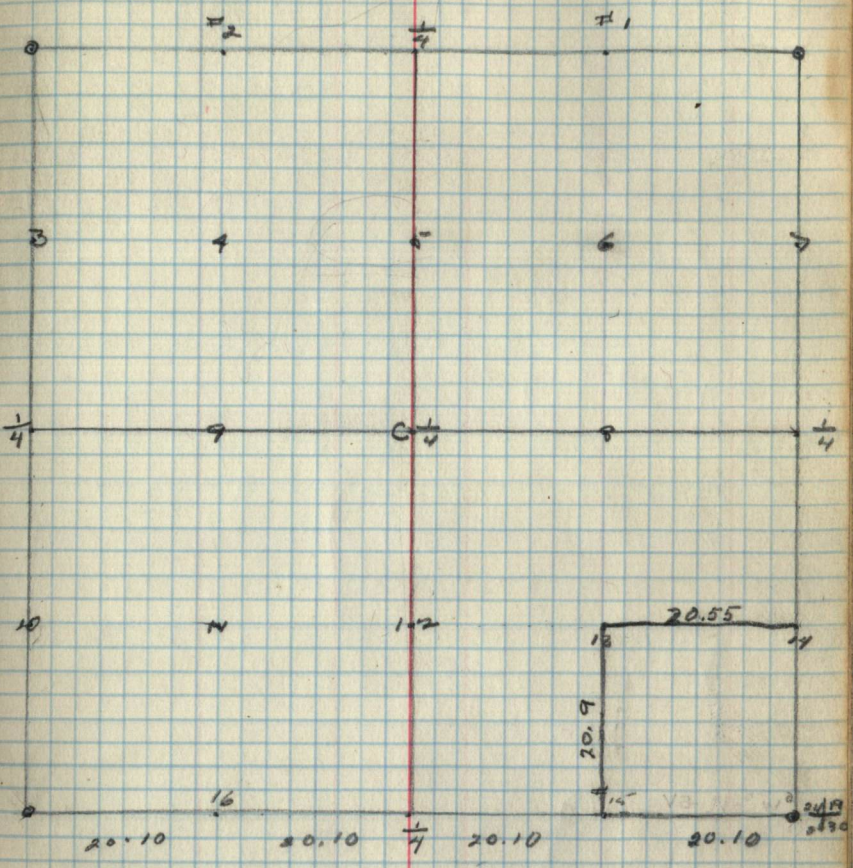


23

S. 23 T. 141, 17.30



S. 24 T. 14 N., R. 30 W.



20.10 20.10 1/7 20.10 20.10

80.40

Va. 7° E

104

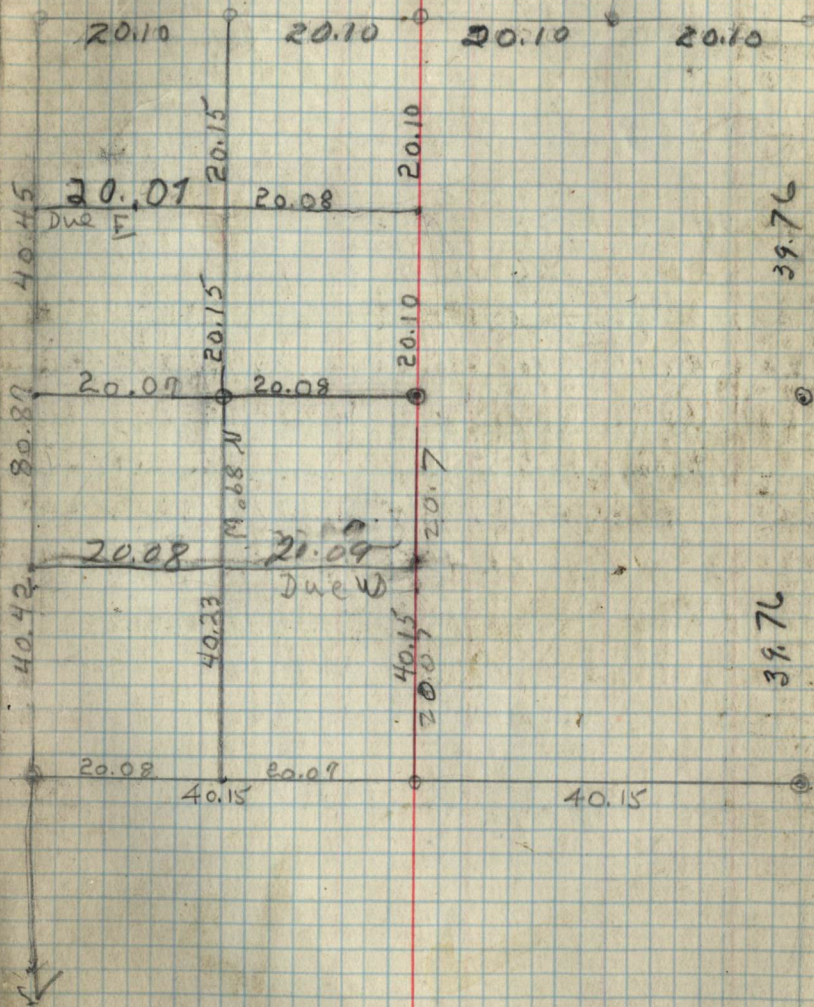






~~R70/R74  
 24/19 ✓ Set 4" Tornic Post 48" above ground. Approx. Cor  
 X/30 Poster on Aspen 3" N78°W 0.06 chs. 8/15/39 CES.  
 E/16 ✓ Set W. Oak Post 4" - 42" above ground. App. Corner  
 Aspen 3" N91°W 0.10 chs. 8/15/39 CES.  
 X/4 24 ✓ Set W. Oak Post 4" - 42" above ground. Approx. Cor.  
 X/R. Pole 12" 72°E 0.31 chs. 8/15/39 CES.  
 W/167 ✓ Set Ash Post 4" - 48" above ground. App. Cor.  
 W.B.T. 8/15/39 CES.  
 W/M/L 3" Birch 4' Above Ground 2/14/41 - WBC  
 W/143 4" Aspen 36" Above Ground 2/14/41 - WBC  
 CW/166 3" Aspen 40" Above Ground 2/14/41 - WBC  
 CN/162 4" Aspen Tree 2/14/41 - WBC  
 TW/164 4" Aspen Post 110" Above Ground 2/14/41 - WBC  
 26/25 County cor 2" I M 8" Above ground  
 35/36 Form 458 on Red Oak 3" j S85°E~~

S. 25, T. 14 N., R. 30 W



39.76

39.76







4 521 ✓ 36" Oak post set 36" above ground  
 S34° (approximate cor) Post on oak N 43° E

75/85 ✓ Set 4" Aspen Post - 24" above ground - Approx. Corner  
 Poster 458 on Dead Oak snag - 4" - N 3 1/2° E 0.93 chs

E 1/16 35 ✓ Set 4" Aspen Post - 36" above ground - App. Corner  
 Poster on corner post. 8/14/39 CES

N 1/16 36 ✓ Set 4" Cedar Post - 36" above ground - Approx. Corner  
 Poster on Fence Corner Post (SE corner Game Refuge)  
 N 62° E 0.19 chs. 8/16/39 CES

G 1/16 37 ✓ Set 3" W. Oak Post - 36" above ground. Approx. Corner  
 Poster on Aspen 6" - N 15° E 0.19 chs. 8/16/39 CES

S 1/16 38 ✓ Set 3" W. Oak Post - 42" above ground. Approx. Corner  
 No BT. Poster on post. 8/16/39 CES

S 1/16 39 ✓ Set 3" W. Oak Post - 42" above ground. App. Corner  
 No BT. Poster on post. 8/28/39 CES

S 1/16 40 ✓ Set 4" Jack Pine post 36" above ground. Approx. Cor.  
 Poster on Birch 4" - S 62 1/2° E 0.24 chs. 8/29/39 CES

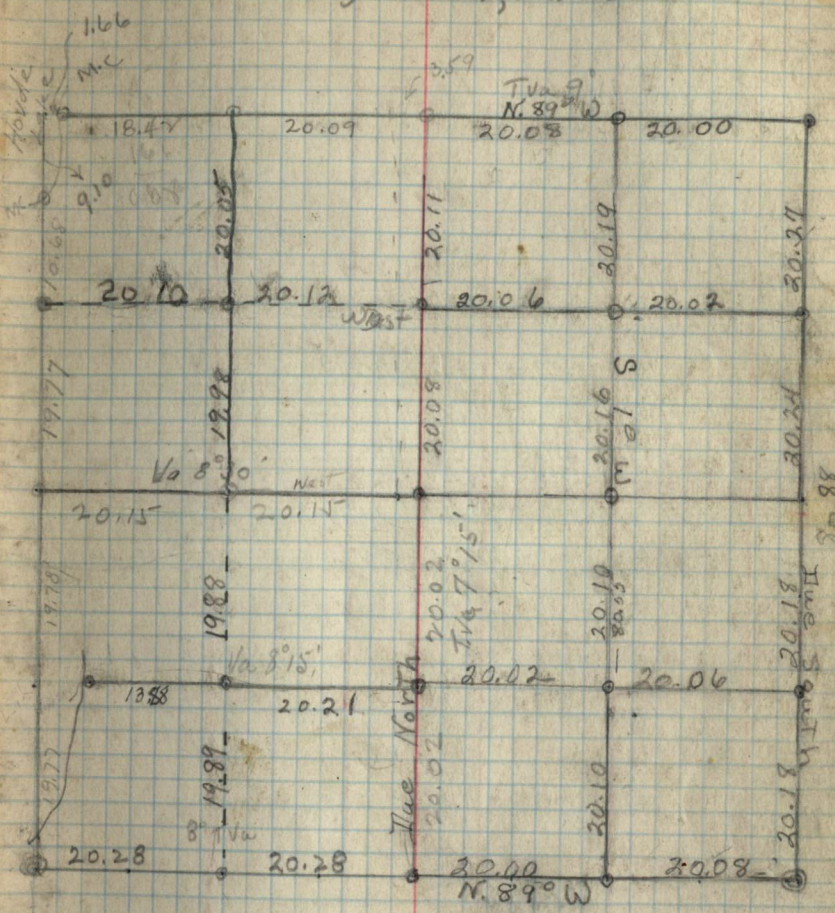
S 1/16 41 ✓ Set W. Oak post - 5' - 42" above ground. Approx. Cor.  
 Poster on post. 8/29/39 CES

26/25 Co. Cor. 2" Iron Pipe (Cap) 8" above Ground 2/12/41 W.B.C.

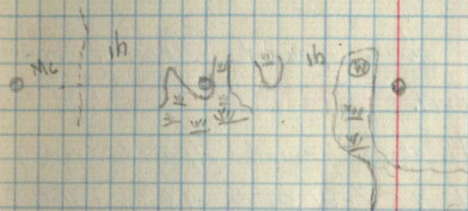
35/36 Post 458 is on 3" Red Oak S 85° E,  
 SE 1/16 36 3" Aspen 4' Above Ground - APPROX 2/12/41 W.B.C.

TW 1/16 37 4" Aspen 4' Above Ground APPROX 2/12/41 W.B.C.

S. 26, T. 14, R. 30









E/16 <sup>527</sup>/<sub>534</sub> ✓ Set 4" W. Oak Post 36" above ground (Approximate)  
Poster on Elm 12" S 71° E 0.78 chs. 6/7/39

S 27 <sup>MC</sup>/<sub>534</sub> ✓ Set 4" Birch Post 36" above ground (Approx. Corner)  
Poster on W. Pine 26" S 54° E 0.65 chs. 6/7/39

W 1/6 <sup>527</sup>/<sub>534</sub> ✓ Set 4" W. Oak Post - 48" above ground (Approx. Corner)  
Poster on Aspen 8" S 14° W 0.07 chs. 6/9/39

28 <sup>27</sup>/<sub>33 34</sub> ✓ Set 4" Tanic Post 36" above ground (Approx. Corner)  
Poster on Red Oak 12" N 76° E 0.97 chs. 6/9/39

W 1/6 <sup>27</sup>/<sub>27</sub> ✓ Set Aspen 4" Post - 48" above ground (Approx. Corner)  
Poster on corner post. 7/1/39

1/4 <sup>27</sup>/<sub>27</sub> ✓ Set 4" Aspen post - 48" above ground (Approx. Corner)  
Poster 458 on Aspen 4" N 52 1/2° W 0.26 chs. 7/1/39

E 1/6 ✓ Set 4" Aspen 48" above ground - Approx. Corner.  
Poster 458 on corner post. 7/1/39

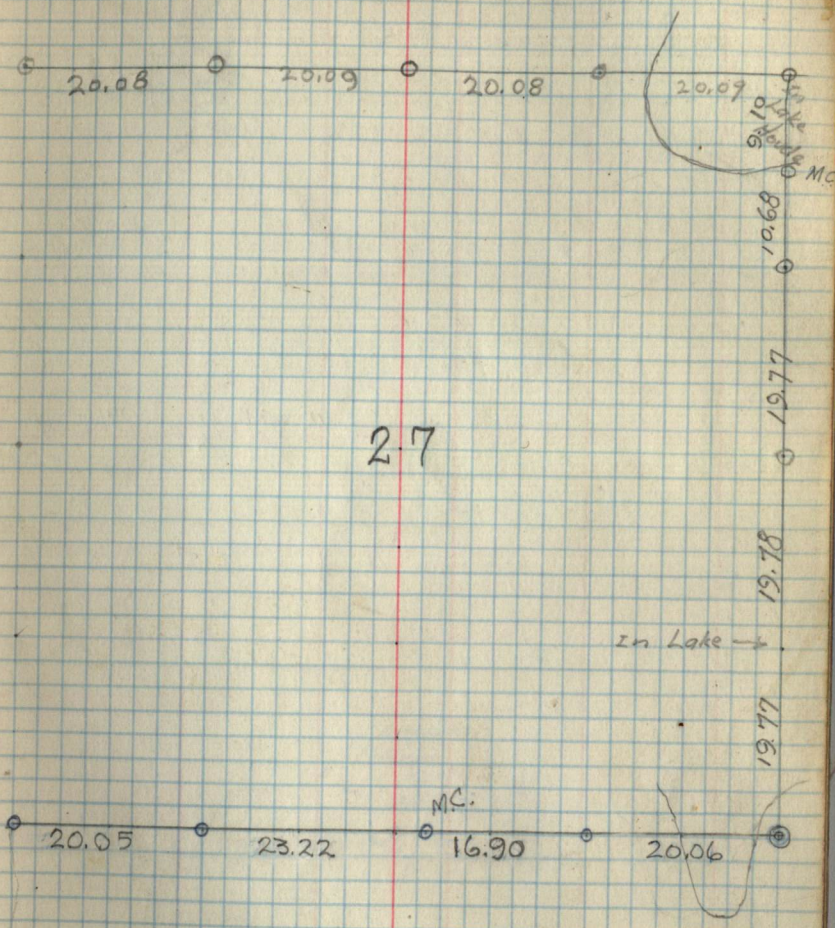
MC <sup>27</sup>/<sub>26</sub> MC. 9.10 chs. S. of <sup>27</sup>/<sub>26</sub> Set 4" W. Oak Post 36" (Approx.)  
Poster 458 on Aspen 3" N 74° W 0.13 chs. - 7-14-39 CES

N 1/6 <sup>27</sup>/<sub>26</sub> ✓ Set 4" W. Oak Post - 48" - Approx. Corner  
Poster 458 on R. Oak 7" N 3 1/2° W 0.12 chs. 7/14/39 CES

1/4 <sup>27</sup>/<sub>26</sub> ✓ Set 4" W. Oak - 42" - App. Cor.  
Poster 458 on corner post. - - - 7/14/39 CES

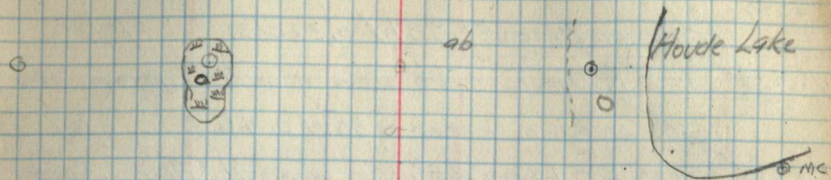
Steadland  
Trott

S. 27, T. 14 N., R. 30 W.

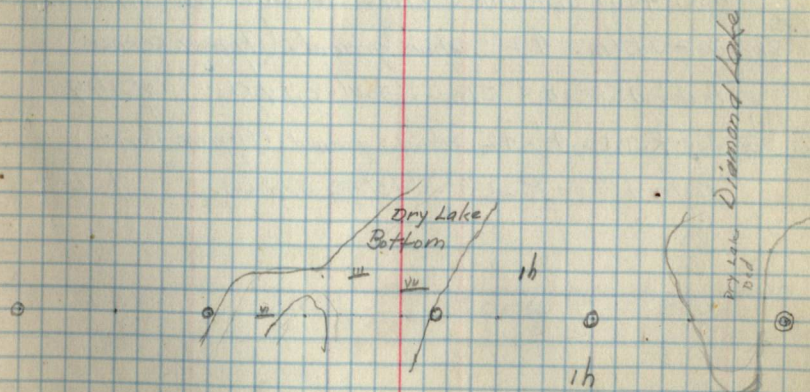




TYPE MAP. 527-T/A/R30



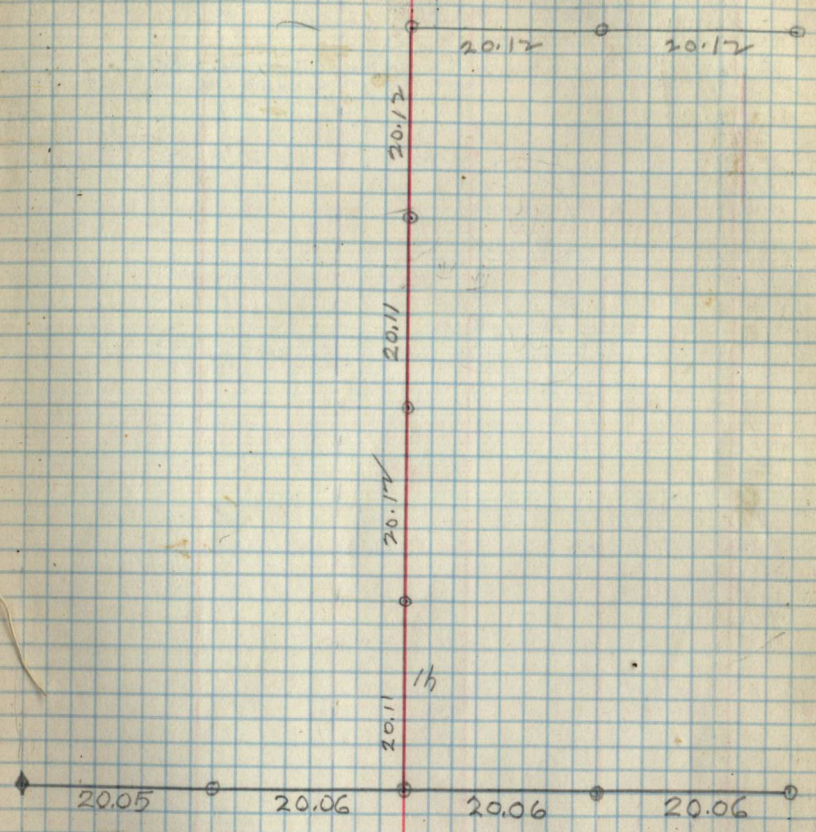
27





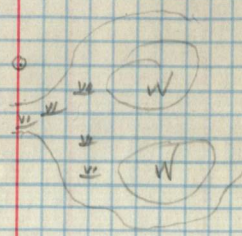
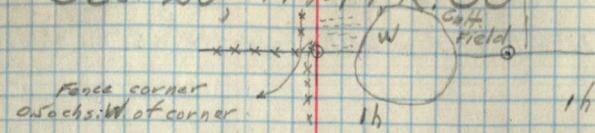
S. 28, T. 141 R 30

- E 1/2 S 28 / 533 Set 3" R. Oak Post 36" above ground (Approx. Corner)  
Poster on Birch 3" S 5 W 0.32 chs. 6/9/39
- 1/4 S 28 / 533 Set 3" R. Oak Post 48" above ground (Approx. Corner)  
Poster on fence corner S 80 W 0.46 chs. 6/9/39
- W 1/2 S 28 / 533 Set 3" R. Oak Post 48" above ground (Approx. Corner)  
Poster on fence corner S 42 W 0.36 chs. 6/9/39
- C 5/16 S 28 Set 4" Aspen Post 36" above ground (App. Corner)  
Poster ASBa on Aspen 4" S 49 3/4 E 0.46 chs. 7/21/39
- C 1/4 S 28 Set 4" R. Oak Post 48" above ground - (Approx. Corner)  
Poster ASBa on W. Oak - 7" - West 0.02 chs. 7-21-39
- C 1/2 W 1/2 S 28 Set 4" R. Oak Post 42" above ground. (Approx. Corner)  
Poster ASBa on R. Oak 3" - N 13 3/4 E 0.45 chs. 7/21/39
- 1/4 S 28 Set 3" Elm - 42" above ground - (Approx. corner)  
Poster AS 8 on 3" Elm - S 50 W 0.04 chs. 7/21/39
- E 1/2 S 28 Set R. Oak - 4" - 42" above ground (Approx. Corner)  
Poster AS 8 on R. Oak 3" - S 43 1/2 E 0.28 chs. 7/21/39





TYPE MAP  
SEC. 28, T. 14, R. 30



16

16



Johnson

S 29, T. 141 R. 30

AINR30  
R 19/20  
20/29

County Cor. 2" In P & Cop. 18" Above ground  
B.T. 10" R. Pine N36°W 491ks. Form 958 on 6" Wood S60°W 157ks

1/16 #2  
5.29

1/4 2.0  
2.9

1/16 #1  
5.29

AINR30  
R 20/21  
29/28

1/16 #7  
5.29

1/4  
29/28

1/16 #14  
5.29

AINR30  
R 29/28  
32/33

Gih. O. A" Sq. Aspen post 24" high 5/9/39  
B.T.'s R. Pine Stump 18" N51°W 321ks. R Pine 14" S33°W 291ks

1/16 #15  
5.29

1/4 2.9  
3.2

Gih. O 3" Sq. Tamarac k post 30" High 5/9/39  
B.T. Tamarac Stump 12" N4°W 15.1ks.

1/16 #16  
5.29

AINR30  
R 30/29  
31/32

County Cor. 2" In P, 16" Above ground  
Form 958 on 5" Ash S75°E 321ks 5/10/39

29





No #10  
5.29

1/4 County Cor. 2" I.P. 16" Above ground  
30/29 Form 458 on 6" Tamarack Snag N15°E 201k

No #31 County Cor. 2" I.P. 16" Above ground  
5.29 Form 458 on Fence post at Corner

No #4  
5.29

No #5  
5.29

No #6  
5.29

No #8  
5.29

C. 1/4  
5.29

No #9  
5.29

No #11  
5.29

No #12  
5.29

No #13  
5.29







1/6 #10  
5.30

1/2  
F-30

1/6 #3  
5.30

1/6 #4  
5.30

1/6 #5  
5.30

1/6 #6  
5.30

1/6 #8 County Cor 2" E.P. Laying on ground  
5.30 Form 758a on 6" Tamarack N15°E 271k.s

C/A  
5.30

1/6 #9 County Cor. 2" E.P. 20" Above ground  
5.30 Form 758a on Fence post Noy. 11k

1/6 #11  
5.30

1/6 #12  
5.30

1/6 #13  
5.30

1/6 #14  
5.30











30/29  
31/32

County Cor. 2" I.P. 18" Above ground  
Form 458 on 6" W. Ash S. 75° E. 32 Links

32/33  
CC

County cor 2" I.M. 14" Above ground  
Form 458A on 3" Red oak S 56° E 20 links

1/4  
31/32

FS Approx 4" Tam. 36" Above ground  
Form 458a on 6" Tam S. 84° E. 55 Links

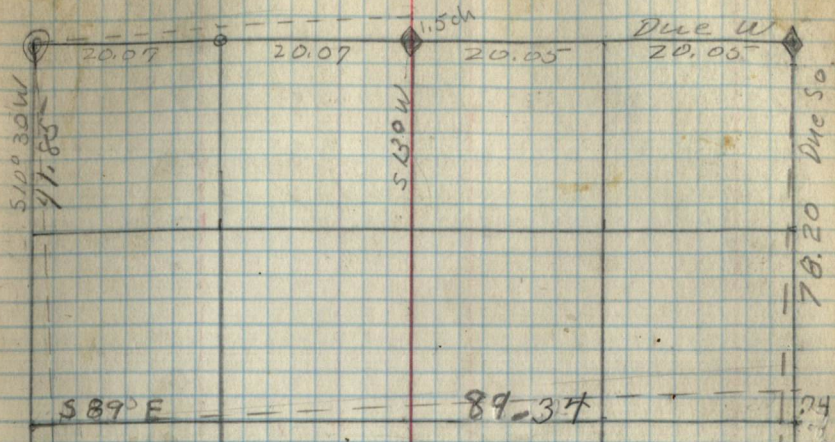
1/4  
32/33

FS APPROX 3" ASPEN 36" Above ground

1/4  
32  
CC

C/4  
S32

#1  
1/16



S 11° 30' W  
41.85

S 11° 30' W  
41.85

S 89° E 89.37

100.72 N 89° W

1/4 error = 13.5  
1/4 distance = 25 chains







~~NINR 32 1/2~~  
28/32  
32/33  
G.L.O 4" Square Aspen Post 29" High  
B.T.'s 18" R. Pine Stamp N54°W 321ks. 17" R. Pine S.33°W 291ks.

1/6 #2  
S.33

1/4 28  
33

1/6 #1  
S.33

~~NINR 1/2~~  
28/32  
33/34  
County Cor. 2" Iron Pipe 36" Above ground <sup>corner</sup>

1/6 #7  
S.33

33/34  
M.C

M.C  
33/34

33/34  
M.C

M.C  
33/34

~~NINR 30 1/2~~  
33/34  
County Cor. (Pipe probably buried in road)  
B.T. 9 Tamarack N42°W 881ks

1/6 #15  
S.33

1/4  
33  
County Cor. 2" Iron Pipe 18" Above ground

78.20

||

1.75

1/6 #16  
S.33

~~NINR 32 1/2~~  
32/33  
County corner 2" pipe w/ cap

1/6 #10  
S.33



19.16

19.15

19.16

N3°4'

19.15



4  
32733

1/6 #3  
5.33

1/6 #4  
5.33

1/6 #5  
5.33

1/6 #6  
5.33

S.M.C  
5.33

1/6 #8  
5.33

C 1/4  
5.33

1/6 #9  
5.33

1/6 #11  
5.33

1/6 #12  
5.33

1/6 #13  
5.33

S.M.C.  
5.33



20127  
33/39

County Cor. 2" Iron pipe 36" Above ground <sup>error</sup>

27/39/M.C.

M.C. 27/39

1/6 #1  
5.34

27/39/M.C.

A.N.R. 30  
27/35

County Cor. 2" Iron pipe 20" Above ground  
Form 458 on 8" S. Pine N18°W. 881ks.

1/6 #17  
5.34

1/4  
39/35

1/6 #14  
5.34

A.N.R. 30  
39/35

County Cor. 2" Iron pipe 18" Above ground

1/6 #15  
5.34

1/4  
39

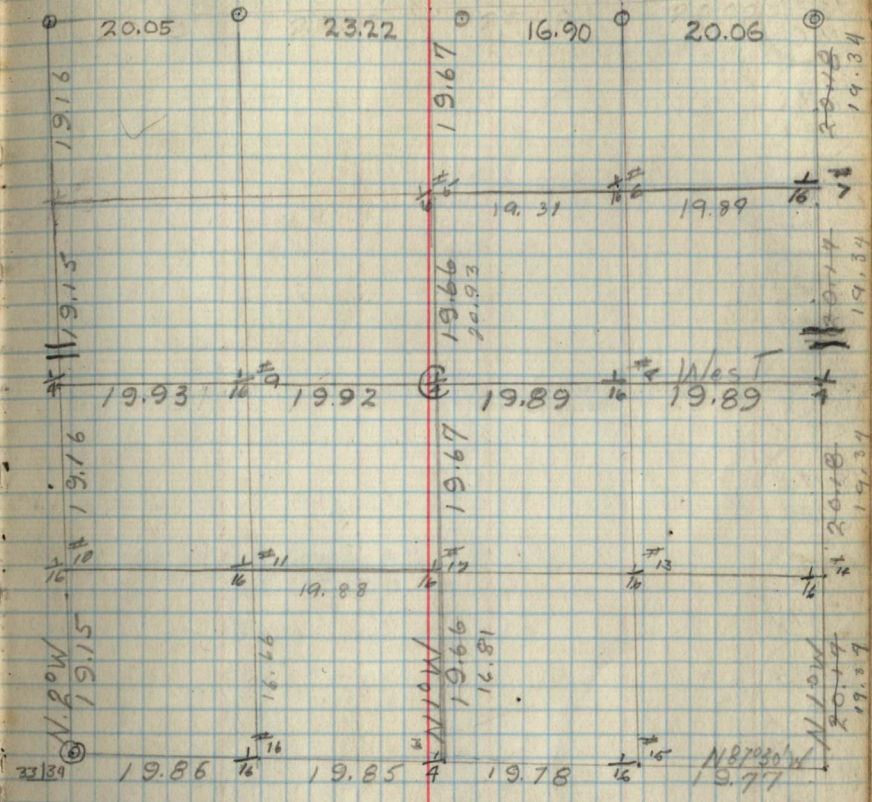
County Cor. (Pipe probably buried in road)  
B.T. 8" R. Oak NP E ? 1ks

1/6 #16  
5.34

A.N.R. 30  
33/39

County Cor. (Pipe probably buried in road)  
B.T. 9" Larnock N90°W 881ks

S. 34, T. 141, R. 30



M.C.  
33/39

33/39  
M.C.



M.C.  
33/34

33/34  
M.C.

1/6 #3  
S.34

1/6 #4  
S.34

S.M.C  
S.34

S.M.C  
S.34

1/6 #5  
S.34

1/6 #6  
S.34

1/6 #8  
S.34

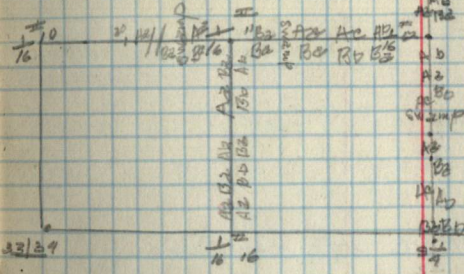
C.1/4  
S.34

1/6 #9  
S.34

S.M.C  
S.34

S.M.C  
S.34

1/6 #11  
S.34



~~1/6 #12  
 1/6 #13  
 1/6 #14  
 1/6 #15  
 1/6 #16  
 1/6 #17  
 1/6 #18  
 1/6 #19  
 1/6 #20  
 1/6 #21  
 1/6 #22  
 1/6 #23  
 1/6 #24  
 1/6 #25  
 1/6 #26  
 1/6 #27  
 1/6 #28  
 1/6 #29  
 1/6 #30  
 1/6 #31  
 1/6 #32  
 1/6 #33  
 1/6 #34  
 1/6 #35  
 1/6 #36  
 1/6 #37  
 1/6 #38  
 1/6 #39  
 1/6 #40  
 1/6 #41  
 1/6 #42  
 1/6 #43  
 1/6 #44  
 1/6 #45  
 1/6 #46  
 1/6 #47  
 1/6 #48  
 1/6 #49  
 1/6 #50  
 1/6 #51  
 1/6 #52  
 1/6 #53  
 1/6 #54  
 1/6 #55  
 1/6 #56  
 1/6 #57  
 1/6 #58  
 1/6 #59  
 1/6 #60  
 1/6 #61  
 1/6 #62  
 1/6 #63  
 1/6 #64  
 1/6 #65  
 1/6 #66  
 1/6 #67  
 1/6 #68  
 1/6 #69  
 1/6 #70  
 1/6 #71  
 1/6 #72  
 1/6 #73  
 1/6 #74  
 1/6 #75  
 1/6 #76  
 1/6 #77  
 1/6 #78  
 1/6 #79  
 1/6 #80  
 1/6 #81  
 1/6 #82  
 1/6 #83  
 1/6 #84  
 1/6 #85  
 1/6 #86  
 1/6 #87  
 1/6 #88  
 1/6 #89  
 1/6 #90  
 1/6 #91  
 1/6 #92  
 1/6 #93  
 1/6 #94  
 1/6 #95  
 1/6 #96  
 1/6 #97  
 1/6 #98  
 1/6 #99  
 1/6 #100~~

~~1/6 #101  
 1/6 #102  
 1/6 #103  
 1/6 #104  
 1/6 #105  
 1/6 #106  
 1/6 #107  
 1/6 #108  
 1/6 #109  
 1/6 #110  
 1/6 #111  
 1/6 #112  
 1/6 #113  
 1/6 #114  
 1/6 #115  
 1/6 #116  
 1/6 #117  
 1/6 #118  
 1/6 #119  
 1/6 #120  
 1/6 #121  
 1/6 #122  
 1/6 #123  
 1/6 #124  
 1/6 #125  
 1/6 #126  
 1/6 #127  
 1/6 #128  
 1/6 #129  
 1/6 #130  
 1/6 #131  
 1/6 #132  
 1/6 #133  
 1/6 #134  
 1/6 #135  
 1/6 #136  
 1/6 #137  
 1/6 #138  
 1/6 #139  
 1/6 #140  
 1/6 #141  
 1/6 #142  
 1/6 #143  
 1/6 #144  
 1/6 #145  
 1/6 #146  
 1/6 #147  
 1/6 #148  
 1/6 #149  
 1/6 #150  
 1/6 #151  
 1/6 #152  
 1/6 #153  
 1/6 #154  
 1/6 #155  
 1/6 #156  
 1/6 #157  
 1/6 #158  
 1/6 #159  
 1/6 #160  
 1/6 #161  
 1/6 #162  
 1/6 #163  
 1/6 #164  
 1/6 #165  
 1/6 #166  
 1/6 #167  
 1/6 #168  
 1/6 #169  
 1/6 #170  
 1/6 #171  
 1/6 #172  
 1/6 #173  
 1/6 #174  
 1/6 #175  
 1/6 #176  
 1/6 #177  
 1/6 #178  
 1/6 #179  
 1/6 #180  
 1/6 #181  
 1/6 #182  
 1/6 #183  
 1/6 #184  
 1/6 #185  
 1/6 #186  
 1/6 #187  
 1/6 #188  
 1/6 #189  
 1/6 #190  
 1/6 #191  
 1/6 #192  
 1/6 #193  
 1/6 #194  
 1/6 #195  
 1/6 #196  
 1/6 #197  
 1/6 #198  
 1/6 #199  
 1/6 #200~~

1/6 #12  
S.34

1/6 #13  
S.34



AINR 32  
20/20  
34/35

County Cor. 2" I.Pipe 20' Above ground  
Form 458 on 8" J.Pine N18°W 881ks.

1/6 #2  
5.35

1/4 26  
35

1/6 #1  
5.85

AINR 32  
26/26  
35/36

County Cor. 2" I.P. & Cap 29' Above ground  
Form 458 on 6" Aspen N6°W. 851ks

1/6 #7  
5.35

1/4  
35/36

1/6 #14  
5.35

AINR 32  
35/36

County Cor. 2" I.P. & Cap 8' Above ground  
Form 458 on 6" B. Ash S53°W 31ks

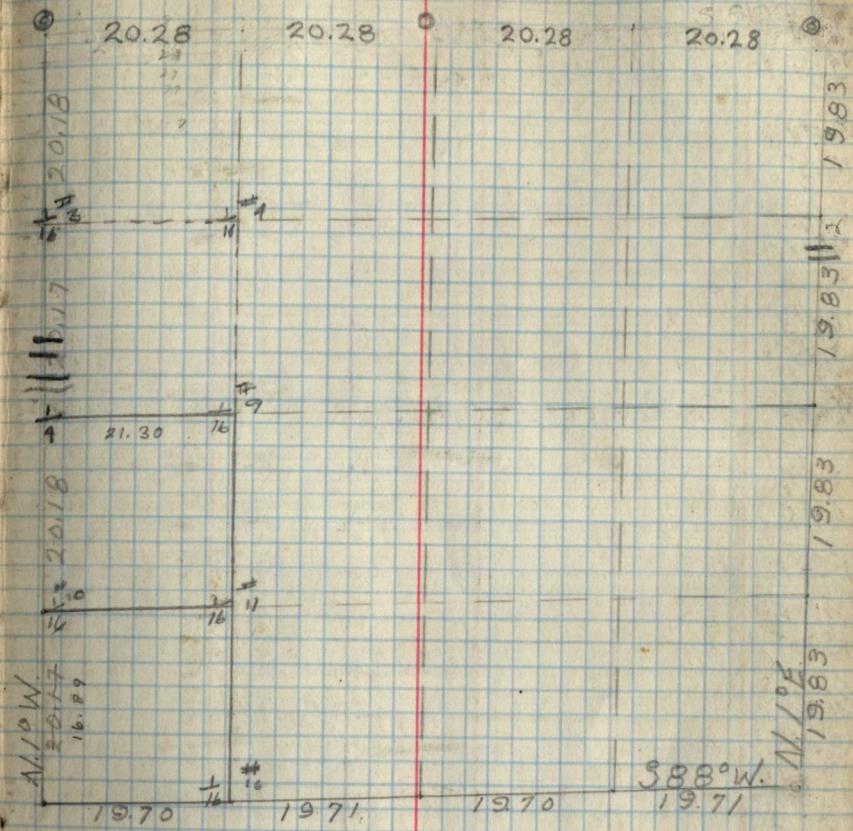
1/6 #15  
5.35

MC/35

County Cor. 2" I.P. 40' Above ground

35/MC

1/6 #16  
5.35





County Cor. R.I. Pipe 18" Above ground

WIN 30  
39 35

1/16 #10

5.35

1/4

39 35

1/16 #3

5.35

1/16 #4

5.35

1/16 #5

5.35

1/16 #6

5.35

1/16 #8

5.35

C 1/4

5.35

1/16 #9

5.35

1/16 #11

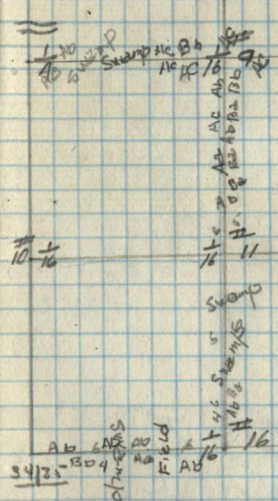
5.35

1/16 #12

5.35

1/16 #13

5.35



S.M.C.  
5.35



WIN 230  
25/35  
35/36  
County Cor. 2" I.P. & Cap 24" Above ground  
Form 458 on 6" Aspen N 60 W 85 k.s.

1/6 #2  
5.36

4.25  
36  
County Cor. 2" I.P. & Cap 24" Above ground

1/6 #1  
5.36

WIN 230  
25/35  
36  
County Cor. 2" I.P. & Cap 24" Above ground

1/6 #7  
5.36

1/4  
36  
County Cor. 2" I.P. & Cap 18" Above ground  
Form 458 on 10" Aspen S 73° E. 18 k.s.

1/6 #14  
5.36

WIN 230  
36  
County Cor. 2" I.P. & Cap 6" Above ground  
Form 458 on 6" R Pine N 93° W 25 k.s.

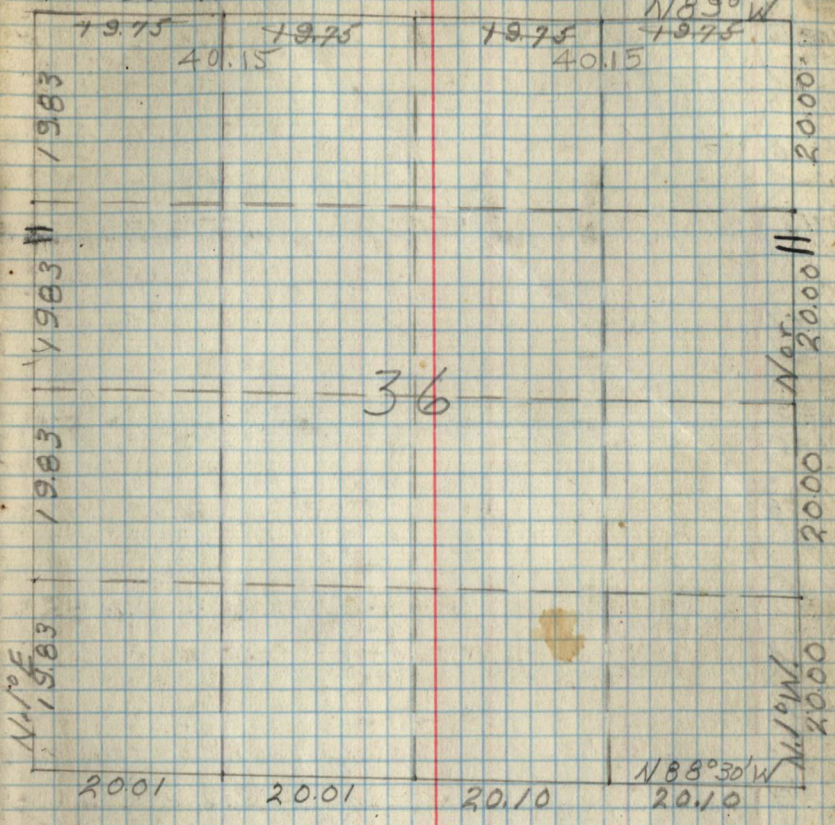
1/6 #15  
5.36

1/4  
36  
County Cor. 2" I.P. & Cap 18" Above ground

1/6 #16  
5.36

WIN 230  
35/36  
County Cor. 2" I.P. & Cap 8" Above ground  
Form 458 on 6" B. Ash S 53° W. 31 k.s.

Sec 36-191-30





$\frac{1}{6}\#10$ 

5.36

 $\frac{1}{4}$  $\frac{35}{36}$  $\frac{1}{6}\#3$ 

5.36

 $\frac{1}{6}\#4$ 

5.36

 $\frac{1}{6}\#5$ 

5.36

 $\frac{1}{6}\#6$ 

5.36

 $\frac{1}{6}\#8$ 

5.36

 $\frac{1}{6}\#7$ 

5.36

 $\frac{1}{6}\#9$ 

5.36

 $\frac{1}{6}\#11$ 

5.36

 $\frac{1}{6}\#12$ 

5.36

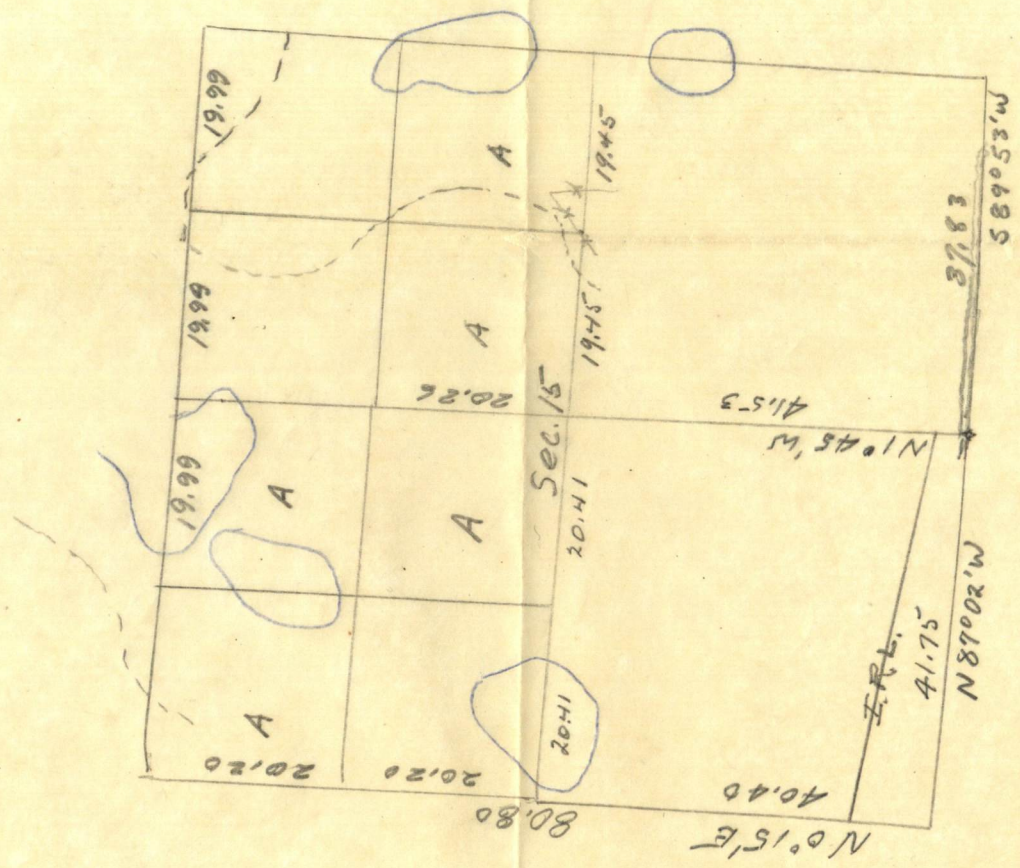
 $\frac{1}{6}\#13$ 

5.36



Pages 037-End  
are Blank





T1AIN R 30W  
 SEC. 15