

OFFICE
141-30

DILLON

MINING
TRANSFER BOOK
No. 4271

ccc 3

EUGENE DIETZGEN CO.

DRAWING MATERIALS, MATHEMATICAL and
SURVEYING INSTRUMENTS

Chicago New York San Francisco New Orleans Pittsburg Toronto

Distances from Center of Roadway for Cross-Sectioning
Roadway 16 feet wide. Side Slopes 1 on 1.
For Single Track Embankment.

H	0	.1	.2	.3	.4	.5	.6	.7	.8	.9	H
0	8.0	8.1	8.2	8.3	8.4	8.5	8.6	8.7	8.8	8.9	0
1	9.0	9.1	9.2	9.3	9.4	9.5	9.6	9.7	9.8	9.9	1
2	10.0	10.1	10.2	10.3	10.4	10.5	10.6	10.7	10.8	10.9	2
3	11.0	11.1	11.2	11.3	11.4	11.5	11.6	11.7	11.8	11.9	3
4	12.0	12.1	12.2	12.3	12.4	12.5	12.6	12.7	12.8	12.9	4
5	13.0	13.1	13.2	13.3	13.4	13.5	13.6	13.7	13.8	13.9	5
6	14.0	14.1	14.2	14.3	14.4	14.5	14.6	14.7	14.8	14.9	6
7	15.0	15.1	15.2	15.3	15.4	15.5	15.6	15.7	15.8	15.9	7
8	16.0	16.1	16.2	16.3	16.4	16.5	16.6	16.7	16.8	16.9	8
9	17.0	17.1	17.2	17.3	17.4	17.5	17.6	17.7	17.8	17.9	9
10	18.0	18.1	18.2	18.3	18.4	18.5	18.6	18.7	18.8	18.9	10
11	19.0	19.1	19.2	19.3	19.4	19.5	19.6	19.7	19.8	19.9	11
12	20.0	20.1	20.2	20.3	20.4	20.5	20.6	20.7	20.8	20.9	12
13	21.0	21.1	21.2	21.3	21.4	21.5	21.6	21.7	21.8	21.9	13
14	22.0	22.1	22.2	22.3	22.4	22.5	22.6	22.7	22.8	22.9	14
15	23.0	23.1	23.2	23.3	23.4	23.5	23.6	23.7	23.8	23.9	15
16	24.0	24.1	24.2	24.3	24.4	24.5	24.6	24.7	24.8	24.9	16
17	25.0	25.1	25.2	25.3	25.4	25.5	25.6	25.7	25.8	25.9	17
18	26.0	26.1	26.2	26.3	26.4	26.5	26.6	26.7	26.8	26.9	18
19	27.0	27.1	27.2	27.3	27.4	27.5	27.6	27.7	27.8	27.9	19
20	28.0	28.1	28.2	28.3	28.4	28.5	28.6	28.7	28.8	28.9	20
21	29.0	29.1	29.2	29.3	29.4	29.5	29.6	29.7	29.8	29.9	21
22	30.0	30.1	30.2	30.3	30.4	30.5	30.6	30.7	30.8	30.9	22
23	31.0	31.1	31.2	31.3	31.4	31.5	31.6	31.7	31.8	31.9	23
24	32.0	32.1	32.2	32.3	32.4	32.5	32.6	32.7	32.8	32.9	24
25	33.0	33.1	33.2	33.3	33.4	33.5	33.6	33.7	33.8	33.9	25
26	34.0	34.1	34.2	34.3	34.4	34.5	34.6	34.7	34.8	34.9	26
27	35.0	35.1	35.2	35.3	35.4	35.5	35.6	35.7	35.8	35.9	27
28	36.0	36.1	36.2	36.3	36.4	36.5	36.6	36.7	36.8	36.9	28
29	37.0	37.1	37.2	37.3	37.4	37.5	37.6	37.7	37.8	37.9	29
30	38.0	38.1	38.2	38.3	38.4	38.5	38.6	38.7	38.8	38.9	30
31	39.0	39.1	39.2	39.3	39.4	39.5	39.6	39.7	39.8	39.9	31
32	40.0	40.1	40.2	40.3	40.4	40.5	40.6	40.7	40.8	40.9	32
33	41.0	41.1	41.2	41.3	41.4	41.5	41.6	41.7	41.8	41.9	33
34	42.0	42.1	42.2	42.3	42.4	42.5	42.6	42.7	42.8	42.9	34
35	43.0	43.1	43.2	43.3	43.4	43.5	43.6	43.7	43.8	43.9	35
36	44.0	44.1	44.2	44.3	44.4	44.5	44.6	44.7	44.8	44.9	36
37	45.0	45.1	45.2	45.3	45.4	45.5	45.6	45.7	45.8	45.9	37
38	46.0	46.1	46.2	46.3	46.4	46.5	46.6	46.7	46.8	46.9	38
39	47.0	47.1	47.2	47.3	47.4	47.5	47.6	47.7	47.8	47.9	39
40	48.0	48.1	48.2	48.3	48.4	48.5	48.6	48.7	48.8	48.9	40

Example—If point is 22.6 ft. above grade, how far should it be from center line to be a slope stake point? Ans. from Table 30.6. For same slopes but other widths of roadbed, correct above figures by one-half difference in width of roadbed; thus in example above, for 20 ft. roadbed distance will be $30.6 + (20 - 16) \div 2$ or 2 ft. added to $30.6 = 32.6$. For slopes of 1 on 1½ see inside of back cover.

Copyright, 1914, by Eugene Dietzgen Co.

141-30

Scanned

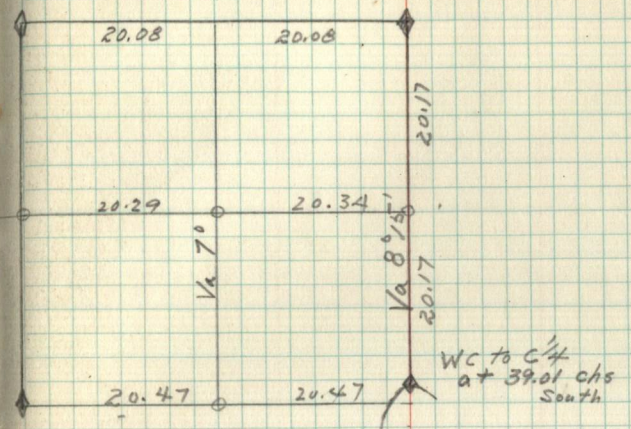
July 11, 2012

Ronney

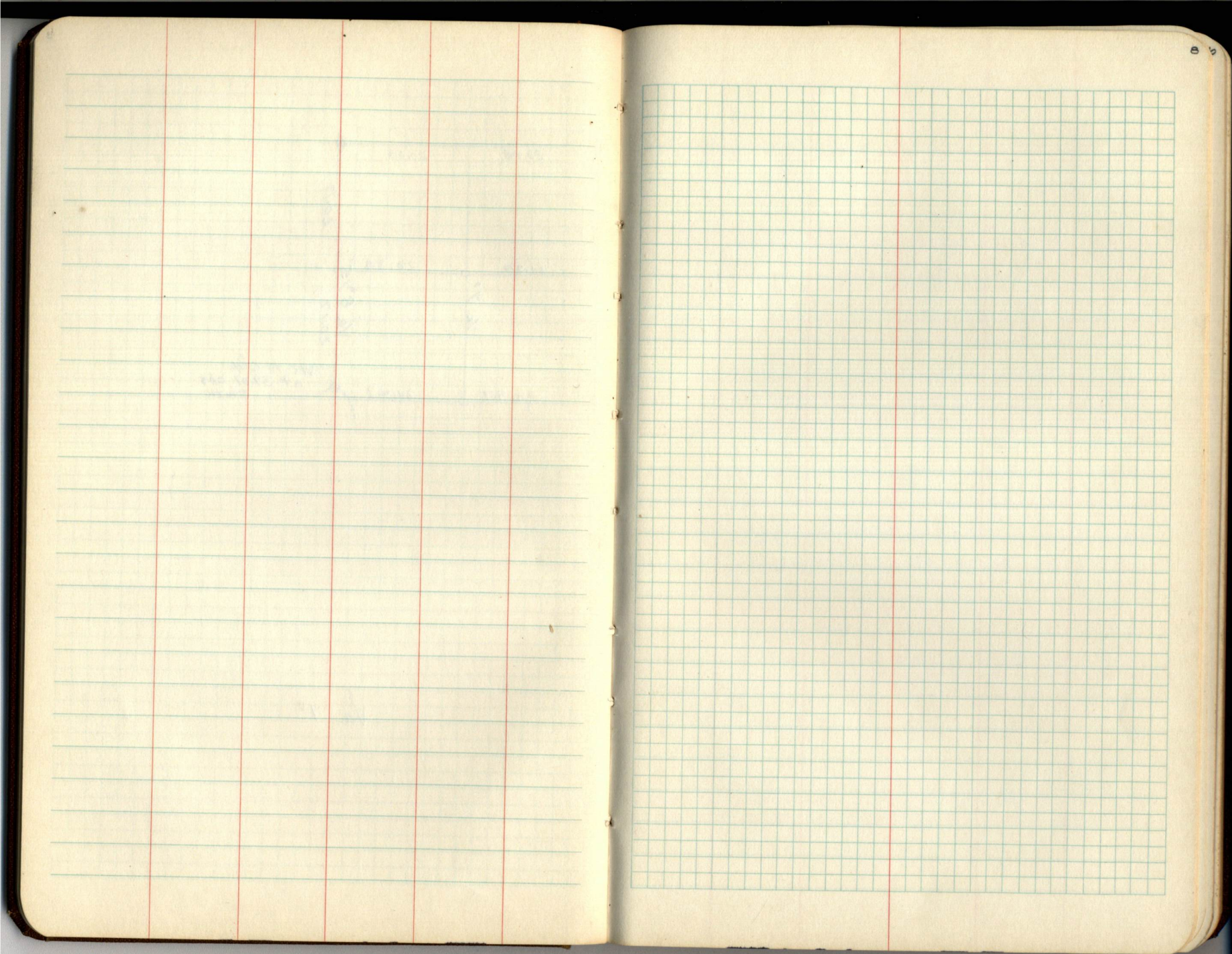
The paper stock of this book is made of a high grade 50% rag paper having a water resisting surface. This book is sewed with Bing Special Enamel Waterproof Thread.

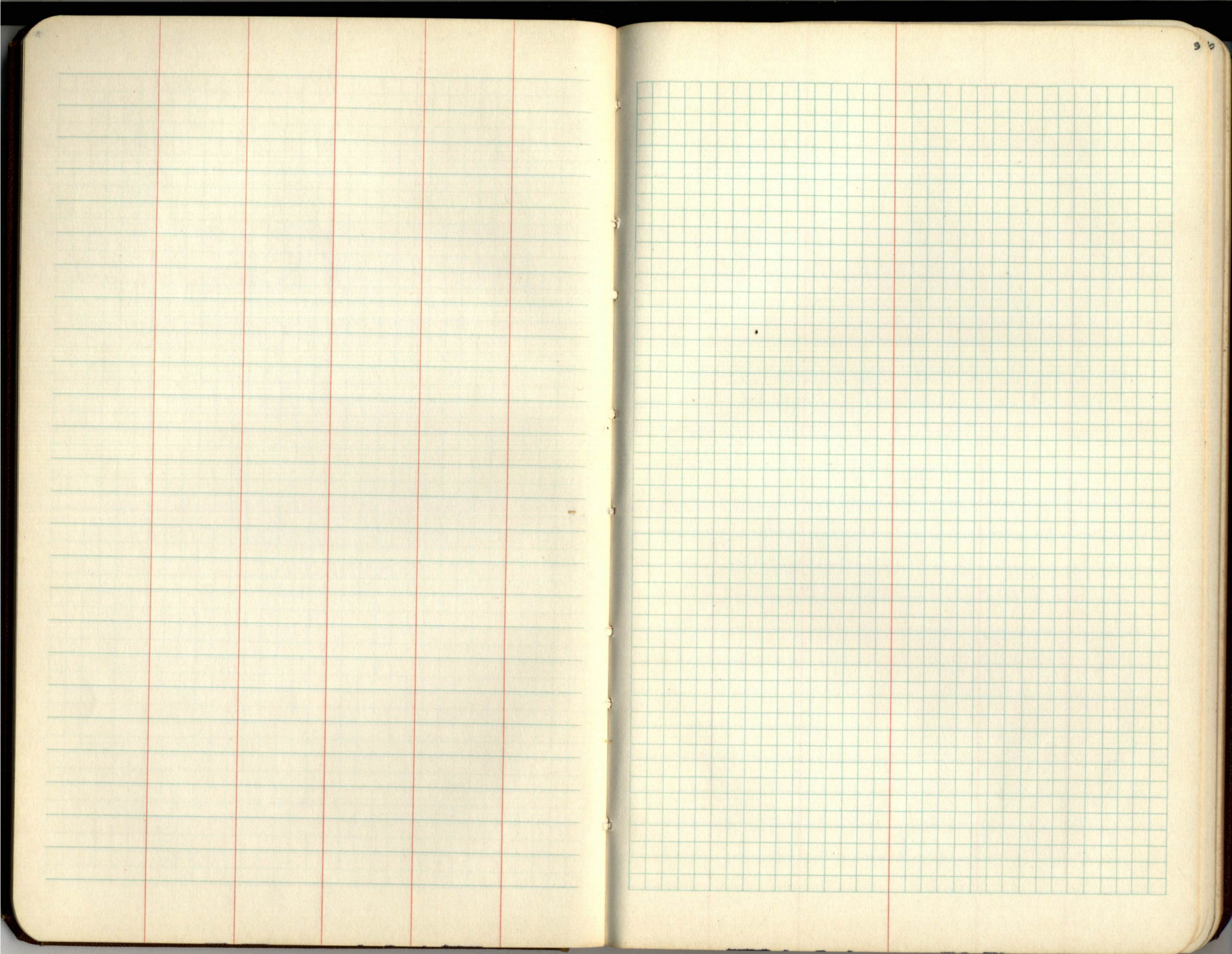
Made in U. S. A.

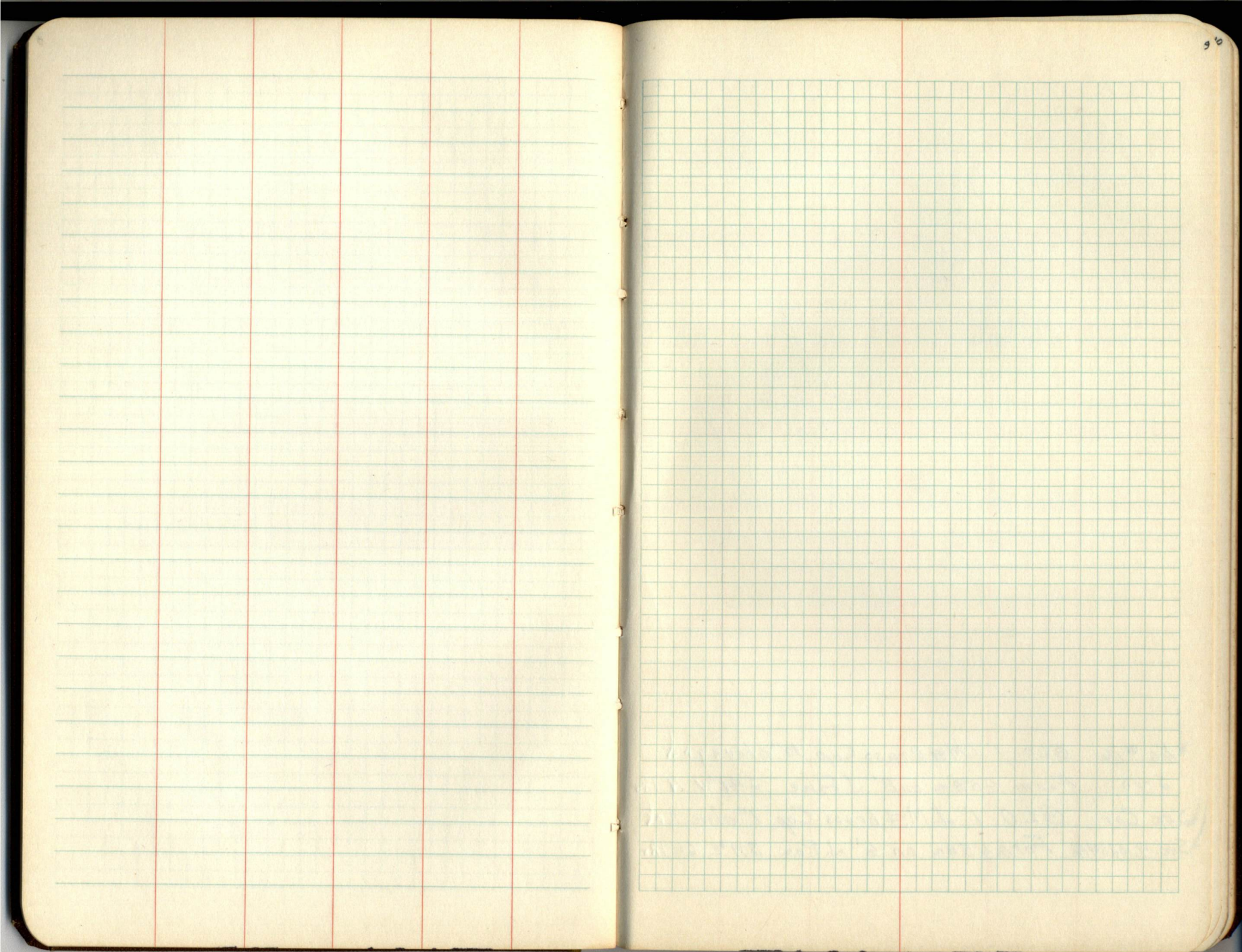
Pages 1-7
are Blank



Va 7°







↓ 1/6 #16 G.L.O. 1" I.M. & Brass Cap 10" above grd
5-10 Form 458a on 8" J. Pine 541°W 4 lbs

↓ Sec. Cor G.L.O. 1" I.M. & brass Cap 1" above grd.

↓ Sec. 9, 10, 15 & 16 Form 458a on 6" J. Pine 511°E 66 lbs

10
Pages 10A-15
are Blank

TAIN R304
819
1716

1/6 #2
5.16

1/4 9
16

1/6 #1
5.16

TAIN R304
910
1615

G.L.O. 2" I.M. & brass Cap 1" Above ground
Form 458 on 6" J. Pine 511°E. 66 lbs.

1/6 #7
5.16

G.L.O. 1" I.M. & brass Cap 2" Above ground
Form 458 on 5" Aspen N. 79°W. 28 lbs

1/16 #15

G.L.O. 1" I.M. & brass cap 6" above grd.
Form 458 on 8" Aspen S 23°E. 7 lbs

I.R.B.
16x15

TAIN R304
1615
2122

Approx 36" Pine Cov.
Form 458 on 8" Spruce 85 lbs N 25°E of Cor

1/6 #15
5.16

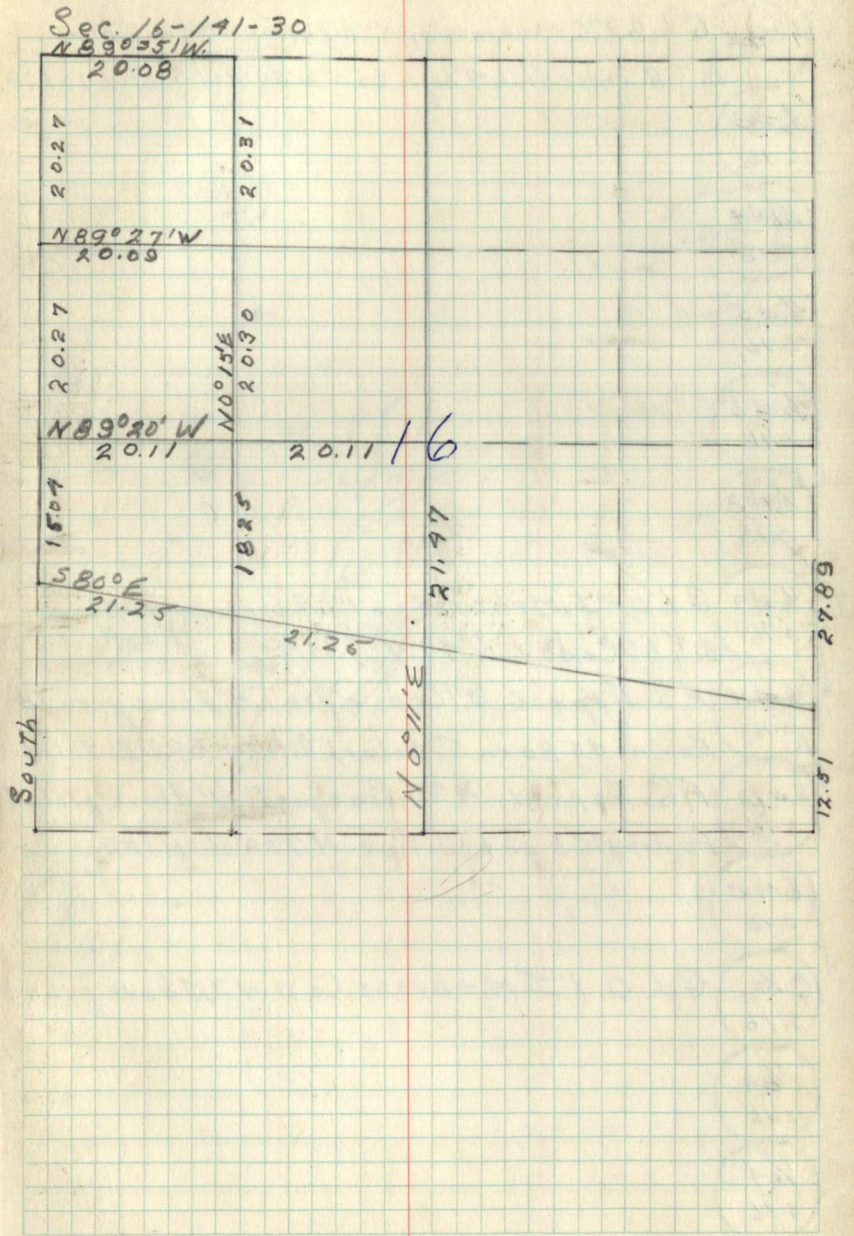
1/4 16
21

1/6 #16
5.16

TAIN R304
1716
2021

I.R.B.
17x16

F.S. Approx. 3" Cedar post 7' high



✓ 4/17/16 G.H.O. 1" I.M. + brass Cap 5" high Form 458 on 6" Birch
B.T. 8" Cedar stub 9' high S50°W 591ks. S30°W. 101ks.

1/6 #3
5.16

1/6 #4
5.16

1/6 #5
5.16

1/6 #6
5.16

1/6 #8
5.16

✓ 1/6 #9 G.H.O. 1" I.M. + brass Cap 1" Above ground
5.16 B.T. 6" Cedar N. 70°W. 31ks.

✓ 1/6 #11 F.S. Approx 3" Cedar post 4' Above ground
5.16 Form 458 on 5" Balmox & lead S72°E 301ks.

✓ 1/6 #12 F.S. Approx. 4" J. Pine post 4' Above ground
5.16 Form 458 on 6" J. Pine N73°W 111ks.

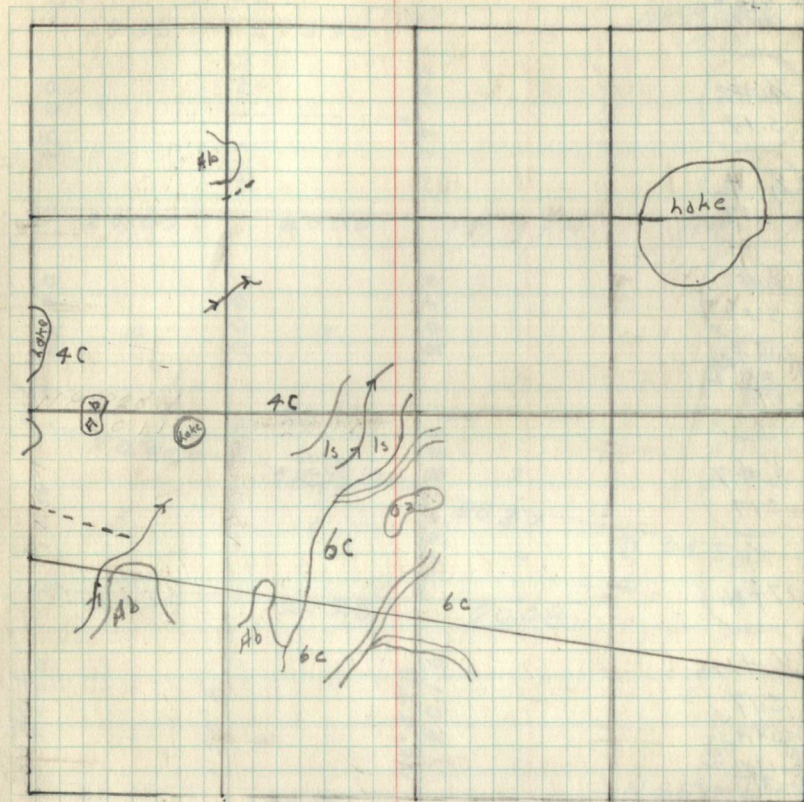
1/6 #13
5.16

✓ C 1/4 G.H.O. 1" I.M. + brass Cap 4" Above ground
5.16

1/6 4
5.16

1/6 7
5.16

1/6 9
5.16



1/6 4
5.16

1/4 #7
W.C.
S.17

1/8 #4 W.C.
S.17

1/8 #1
S.17

1/16 #5
S.17

1/8 #4
S.17

1/16 #6
S.17

1/16 #8 1" I.M. + brass Cap 6" Above ground
Form 45Ba on 6" Aspen S.10° E. 61ks.

1/8 #4
S.17

C 1/4 1" I.M. + brass Cap 8" Above ground
Form 45Ba on 6" R. Oak S.89° E. 391ks.

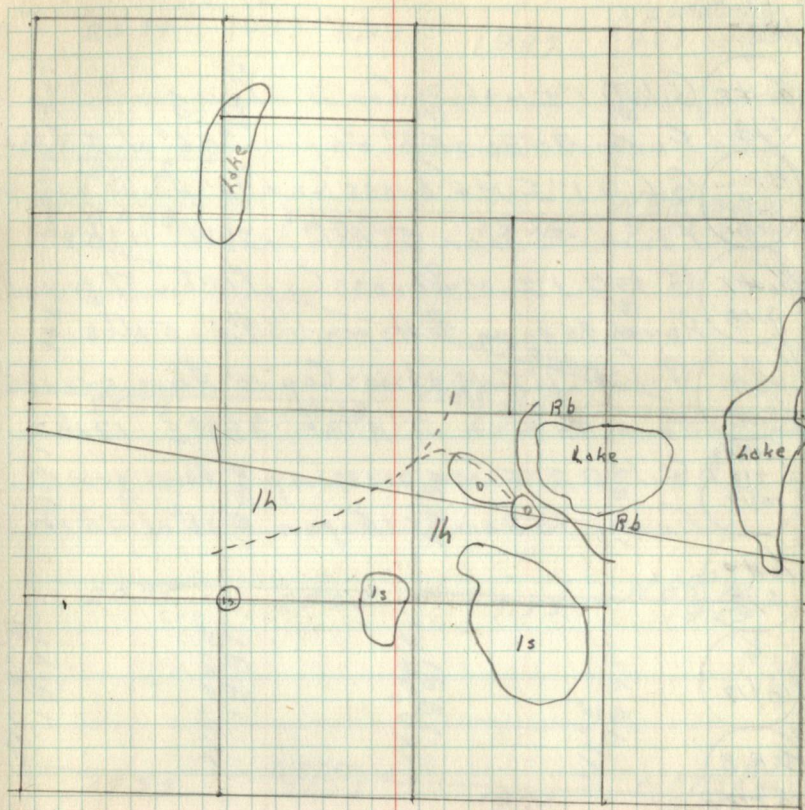
✓ I.R.B. G.L.O. 1" I.M. + brass Cap 8" Above ground
S.17

✓ 1/16 #9 1" I.M. + brass Cap 12" Above ground
Form 45Ba on 2" Birch S.73° W. 151ks.

1/16 #11
S.17

✓ 1/16 #12 F.S. Approx. 2" Aspen post 4' Above ground
S.17

✓ 1/16 #15 F.S. Approx. 3" Birch post 4' Above ground.
S.17



I.R.B. F.S. Approx. 3" Aspen stake 4' Above ground
S.17

~~C.E.C. 1" I.M. + brass Cap 10" Above ground
S.17~~

1/6 #3
S.18

Tr. Coy
S.18

1/6 #1
S.18

1/6 #2
S.18

✓ Tr. Coy. G.L.O. 1" I.M. & brass Cap 18" Above ground
S.18

✓ 1/6 #4 G.L.O. 1" I.M. & brass Cap 18" Above ground
S.18

✓ 1/6 #5 G.L.O. 1" I.M. & brass Cap 6" Above ground
S.18 Form 458a on 6" W. Oak N. 33° E. 301 Ks.

✓ 1/6 #6 G.L.O. 1" I.M. & brass Cap 15" Above ground
S.18 Form 458a on 5" Aspen East 91 Ks

1/6 #7
S.18

Tr. B.C.C.
S.18

1/6 #8
S.18

E.C.C.
S.18

C/4
S.18

C.C.C.
S.18

1/6 #9
S.18

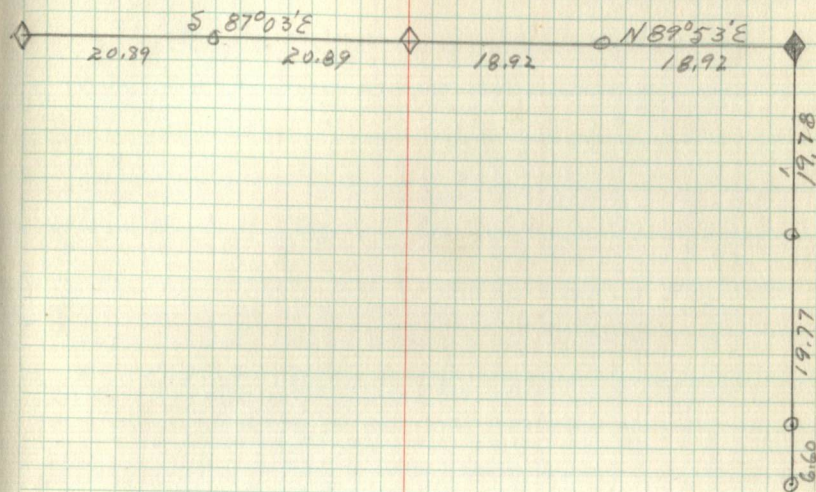
W.C.C.
S.18

1/6 #11
S.18

1/6 #12
S.18

1/6 #13
S.18

Pages 19-21
are Blank



166 ch

Mc.

1842

20.09

20.08

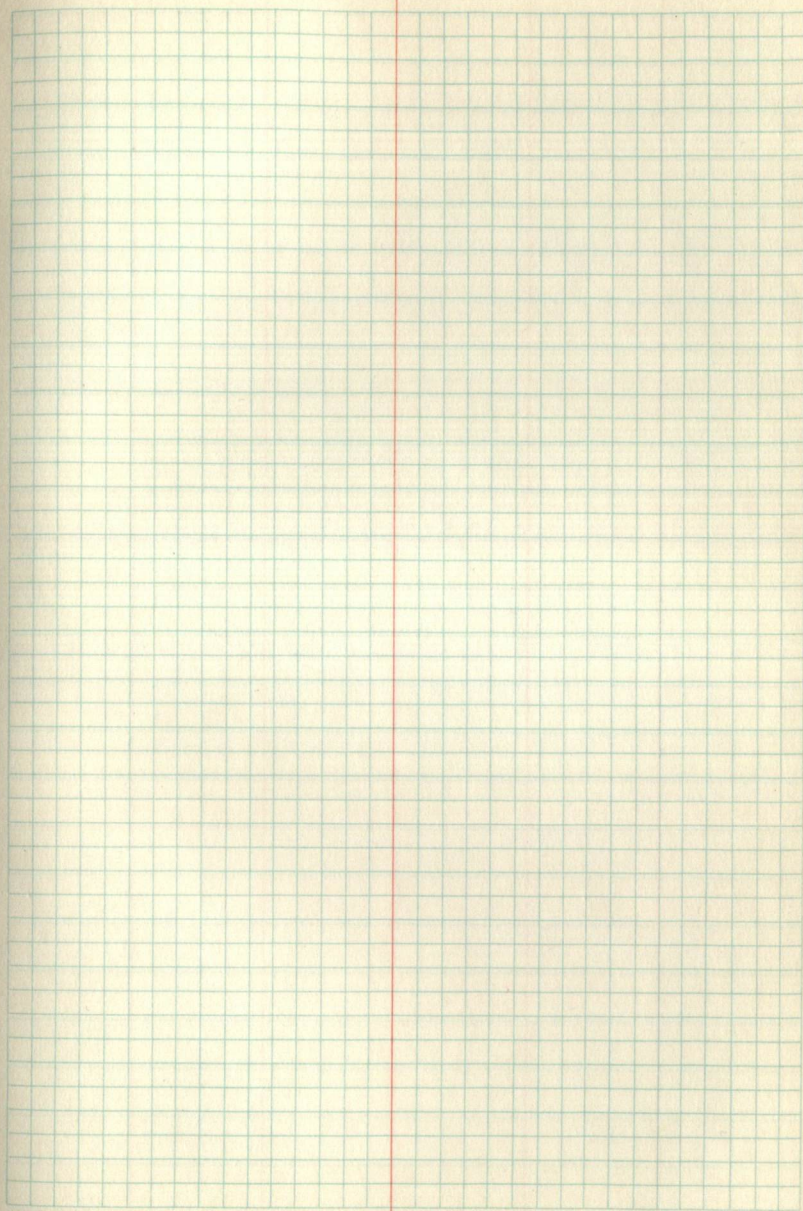
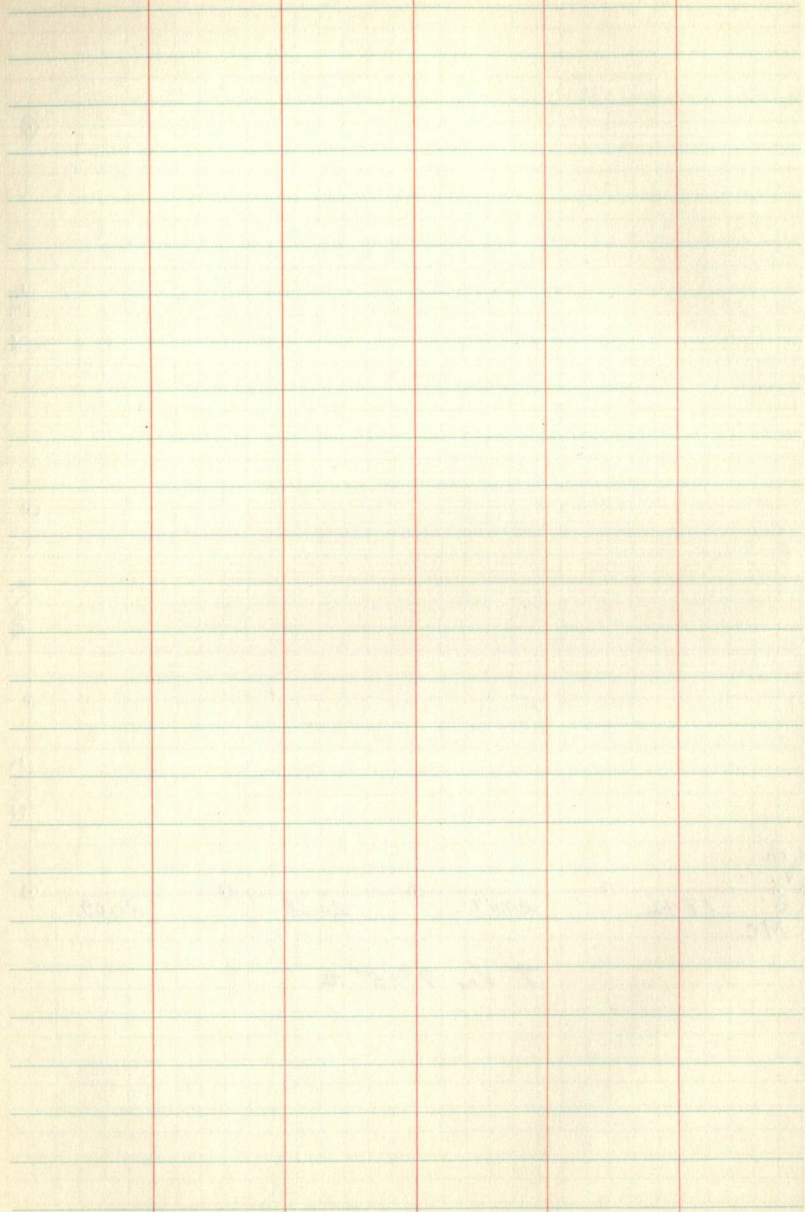
20.09

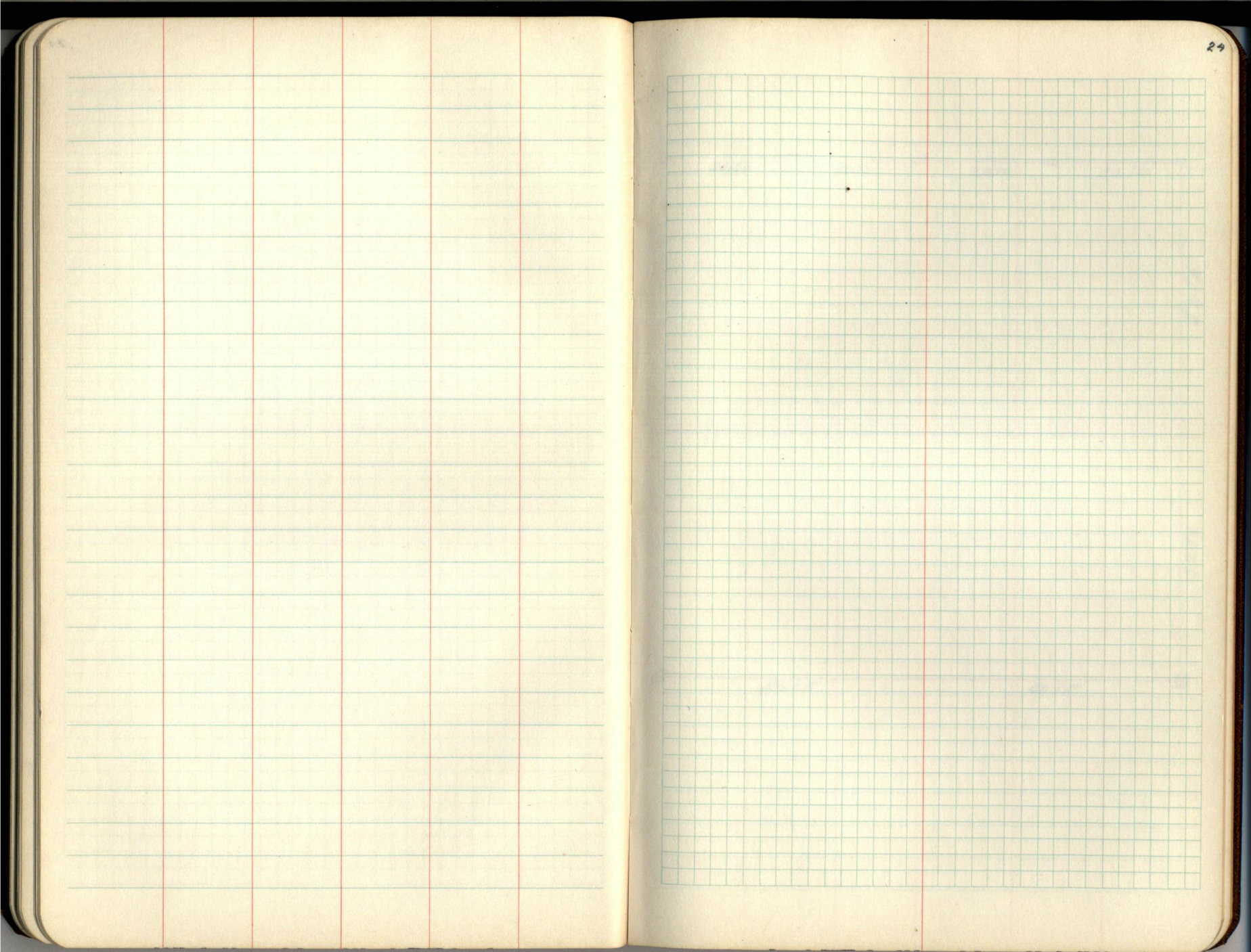
2018

2018

40.35

T Va 9°15' ±



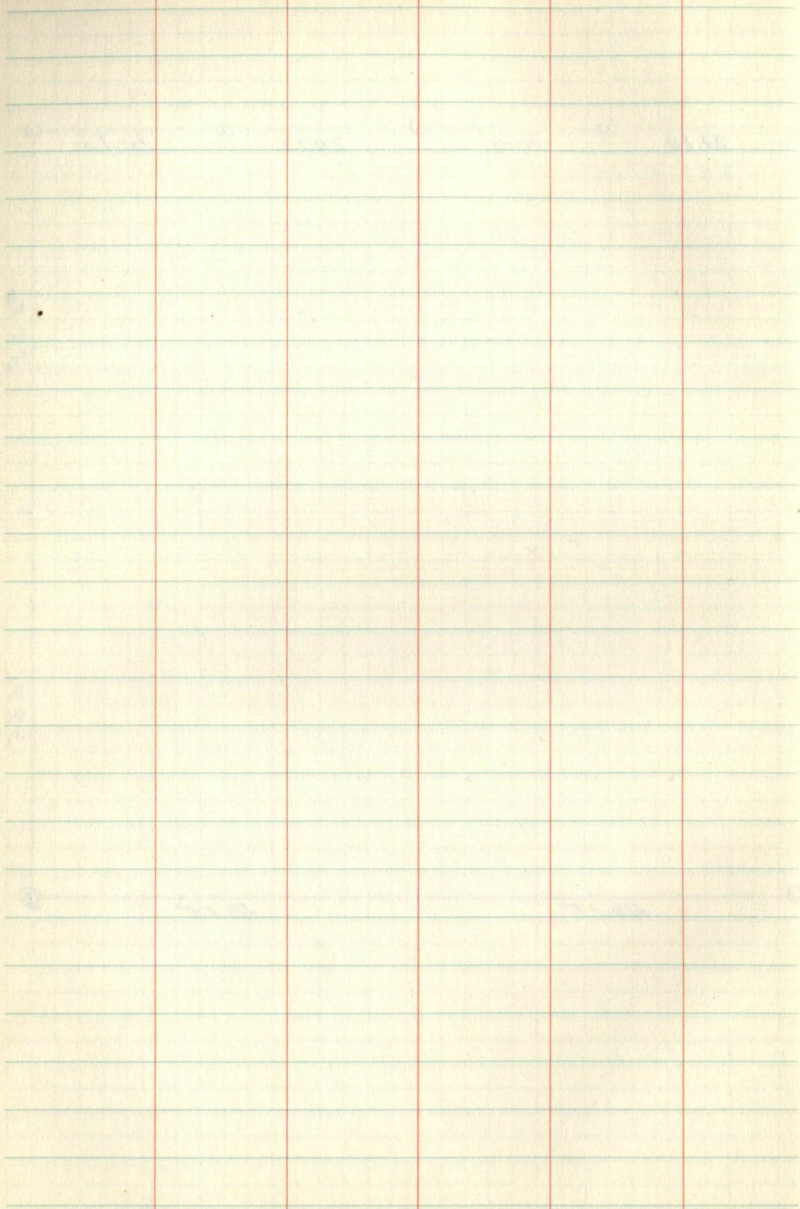
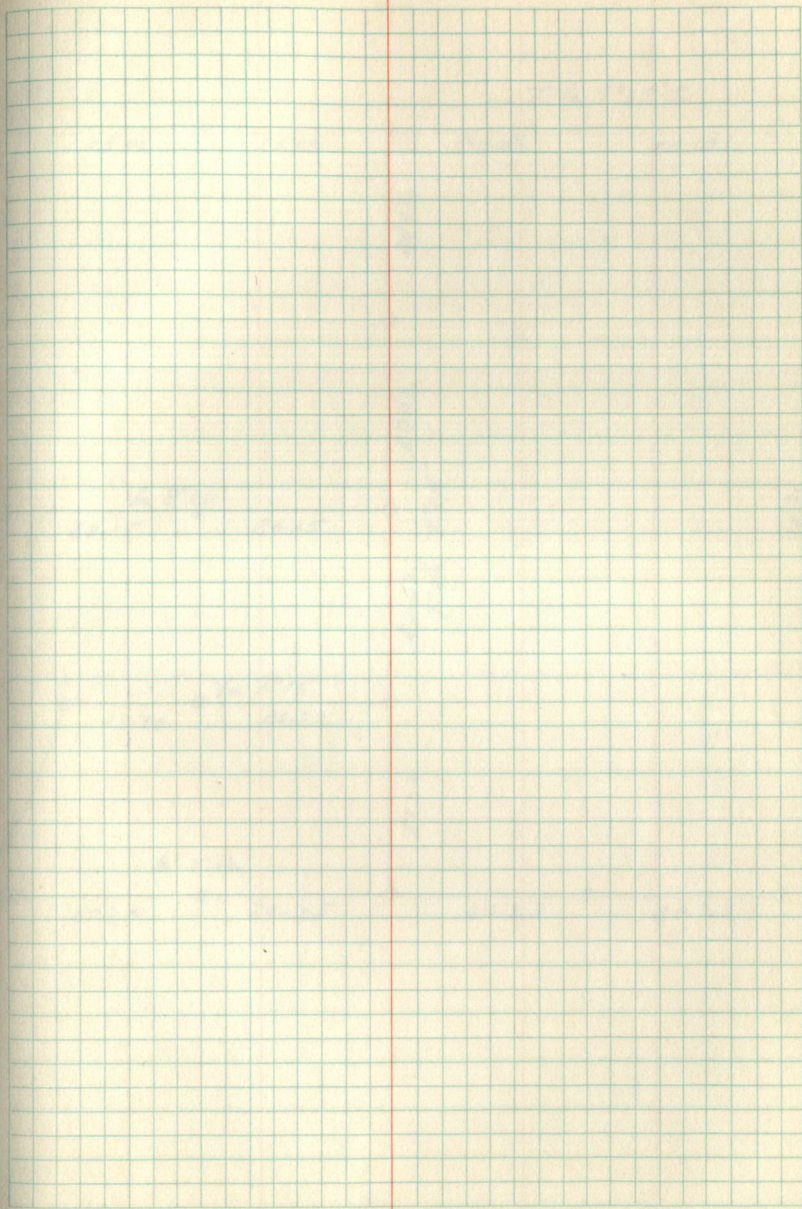


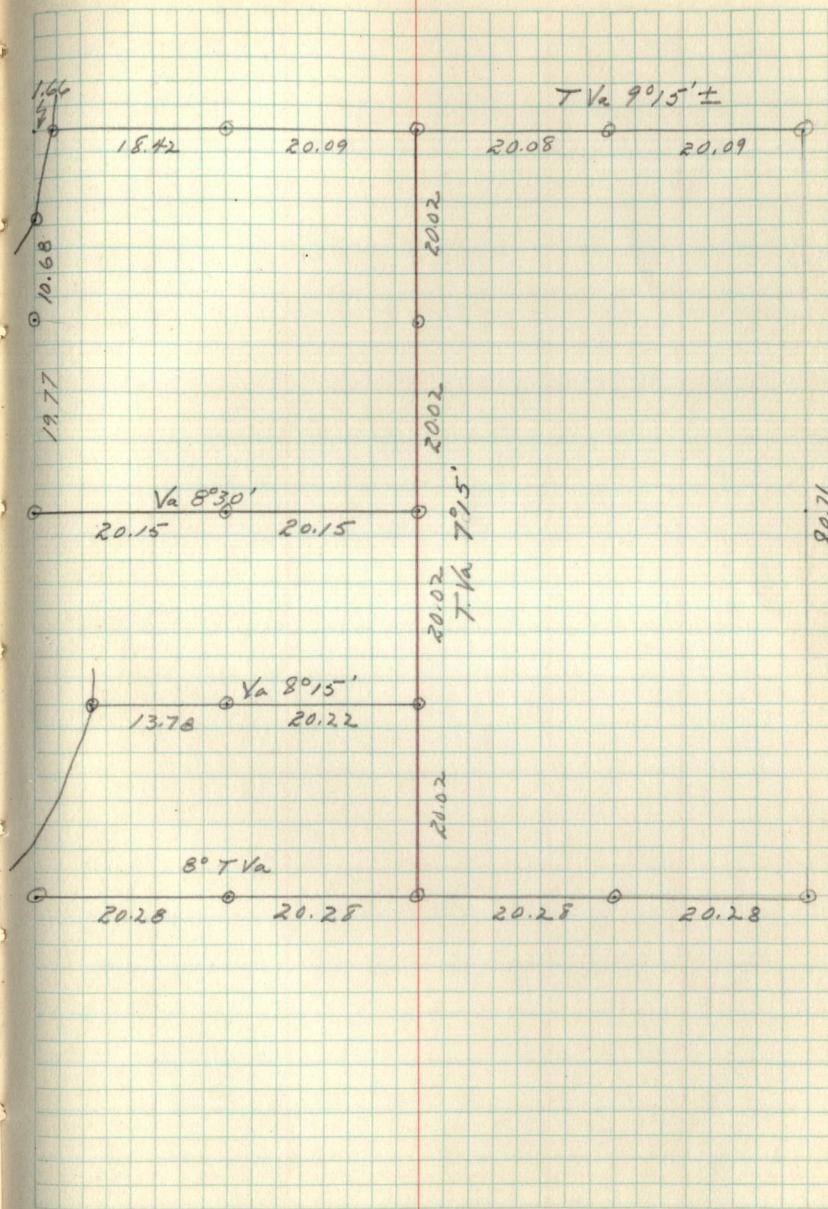
⊙ 20.10 ⊙ 20.10 ⊙ 20.10 ⊙ 20.10 ⊙

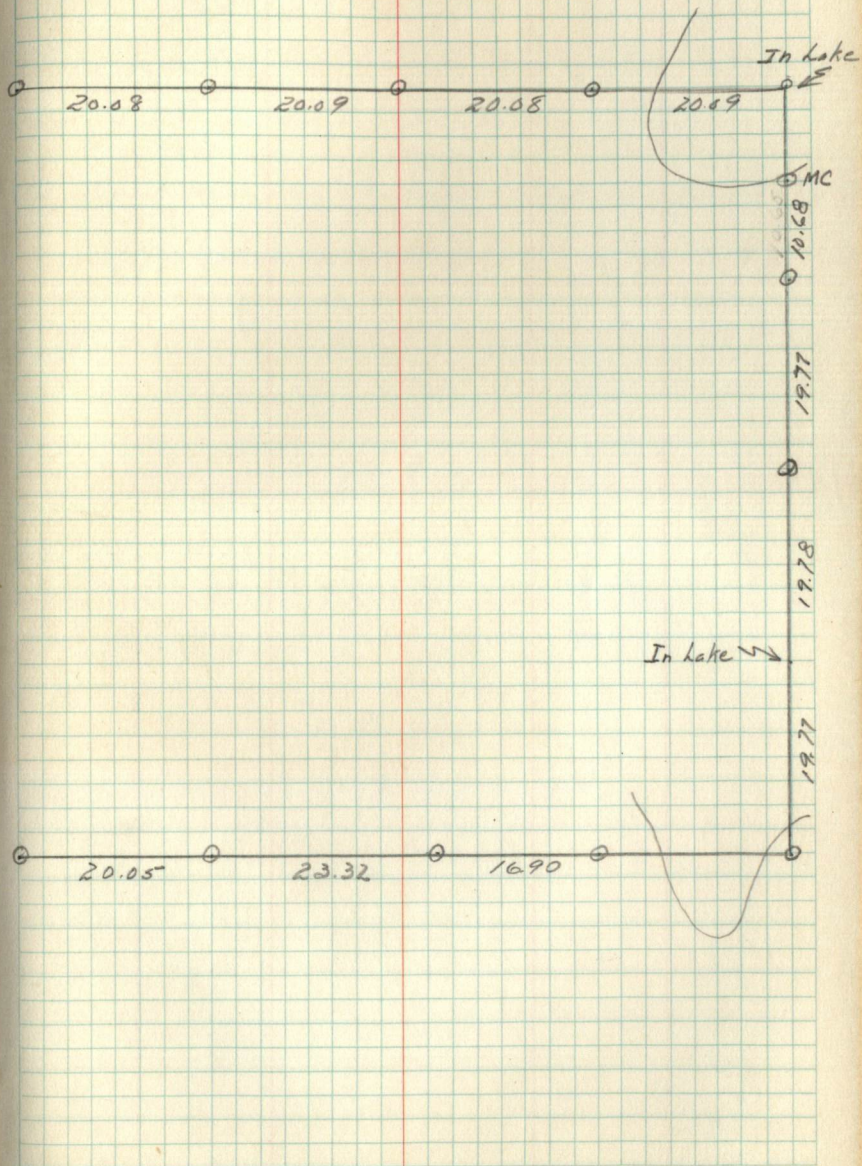
39.76

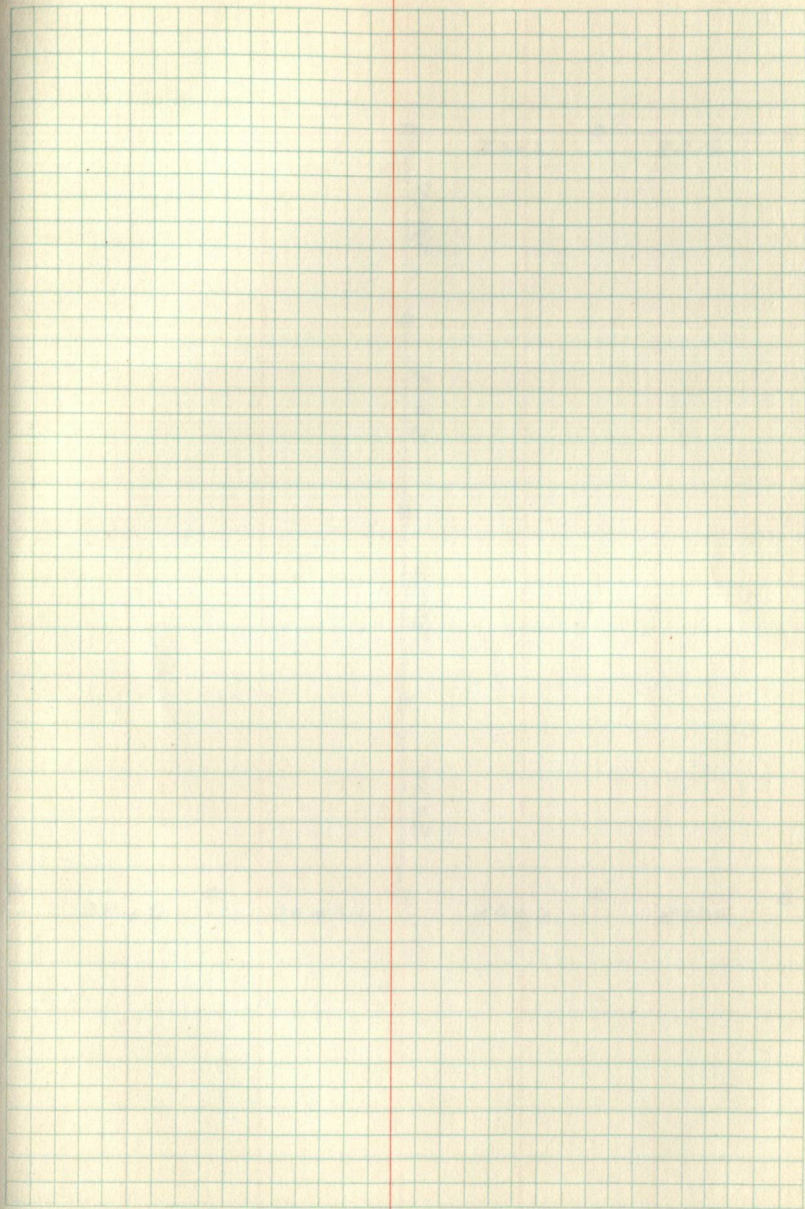
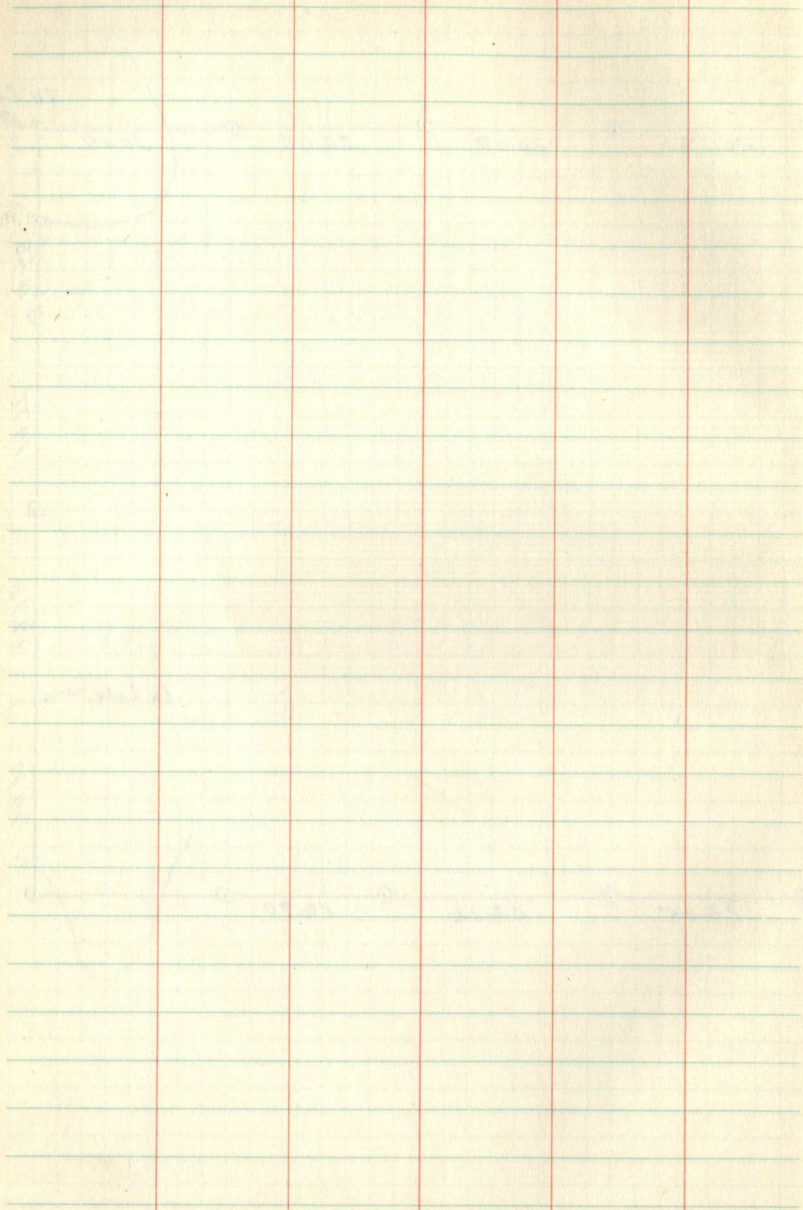
39.76

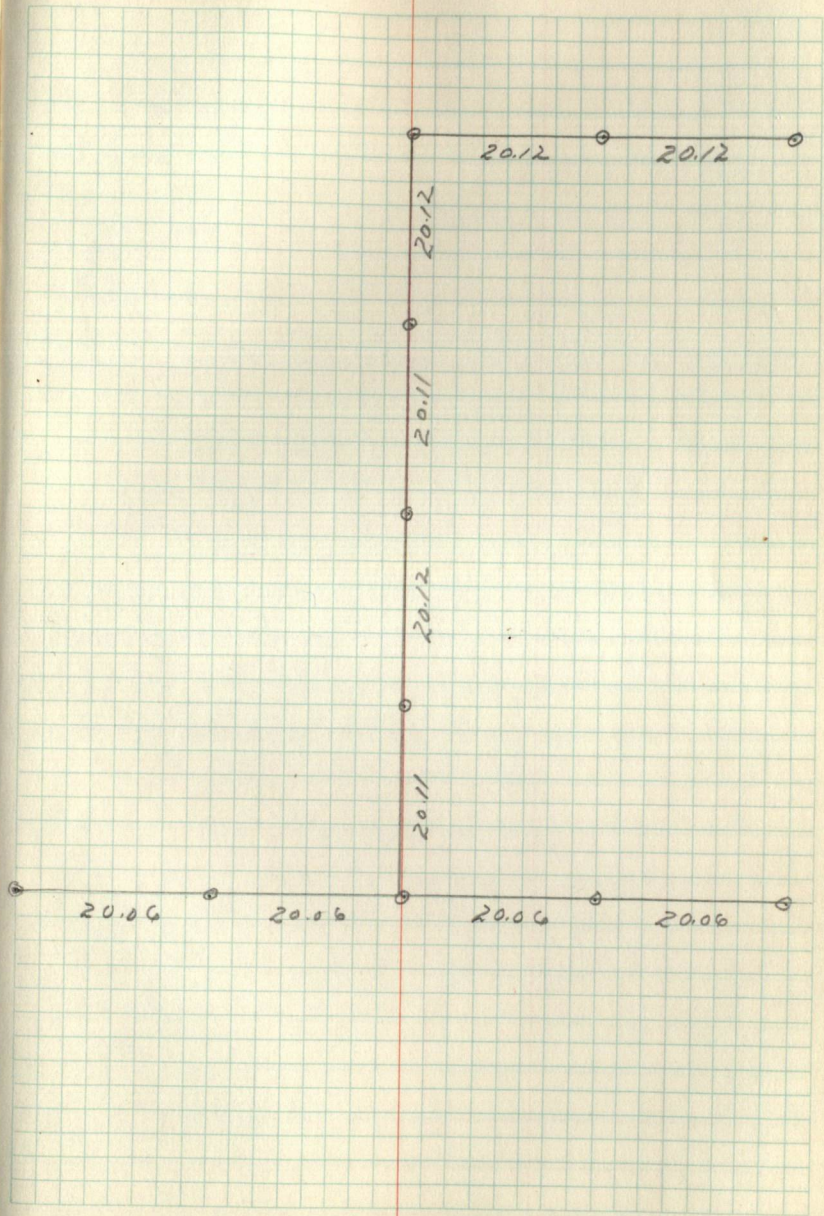
⊙ 40.15 ⊙ 40.15 ⊙

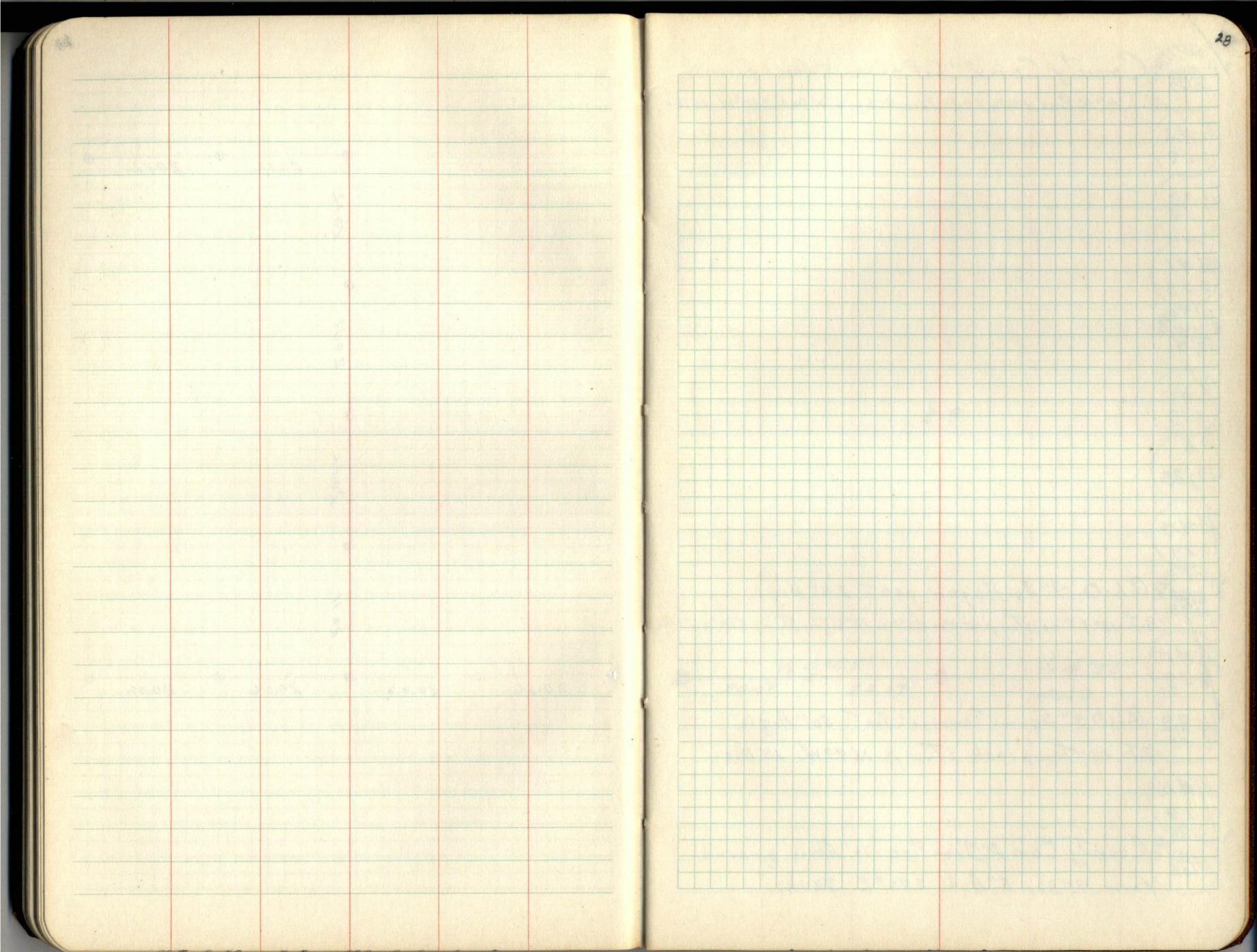












41NR300
19/20
30/29

County Cor. 2" I.P. of Cap 18" Above ground

B.T. 16" R. Pine N36°W 69 kts. Form 958 on 6" W. Oak. S60°W 15 kts.

1/6 #2
5.29

1/4 20
29

1/6 #1
5.29

41NR300
20/21
29/28

1/6 #7
5.29

1/4
29/28

1/6 #14
5.29

41NR300
29/28
32/33

G.h. O. 7" Sq. Aspen post 29" High

B.T. 18" R. Pine Stump N59°W 82 kts. 19" R. Pine Stump S33°W 29 kts.

1/6 #15
5.29

1/4 29
32

G.h. O. 3" Square Tamarack Post 30" High

B.T. 12" Tamarack Stump N. 40°W. 15 kts.

1/6 #16
5.29

41NR300
30/29
31/32

County Cor. 2" Iron Pipe 16" Above ground

Form 958 on 5" Ash S. 75° E. 32 kts.

2.9



1/6 #10
5.29

39/29 County Cor. 2" Iron pipe 16" Above ground
Form 958 on 6" Tamarack snag N15°E 201ks.

1/6 #3
5.29 County Cor. 2" Iron pipe 18" Above ground
Form 958a on Fence post at Corner.

1/6 #4
5.29

1/6 #5
5.29

1/6 #6
5.29

1/6 #8
5.29

C 1/9
5.29

1/6 #9
5.29

1/6 #11
5.29

1/6 #12
5.29

1/6 #13
5.29

○

1/6 #10
5.30

1/6
5.30

1/6 #3
5.30

1/6 #4
5.30

1/6 #5
5.30

1/6 #6
5.30

✓ 1/6 #8 County Cor. 2" Iron pipe laying on ground
5.30 Form 458a on 6" Tamarack N15°E 271ks

C. 1/4
5.30

✓ 1/6 #9 County Cor. 2" Iron pipe 20" Above ground
5.30 Form 458a on fence post Nor. 11ks

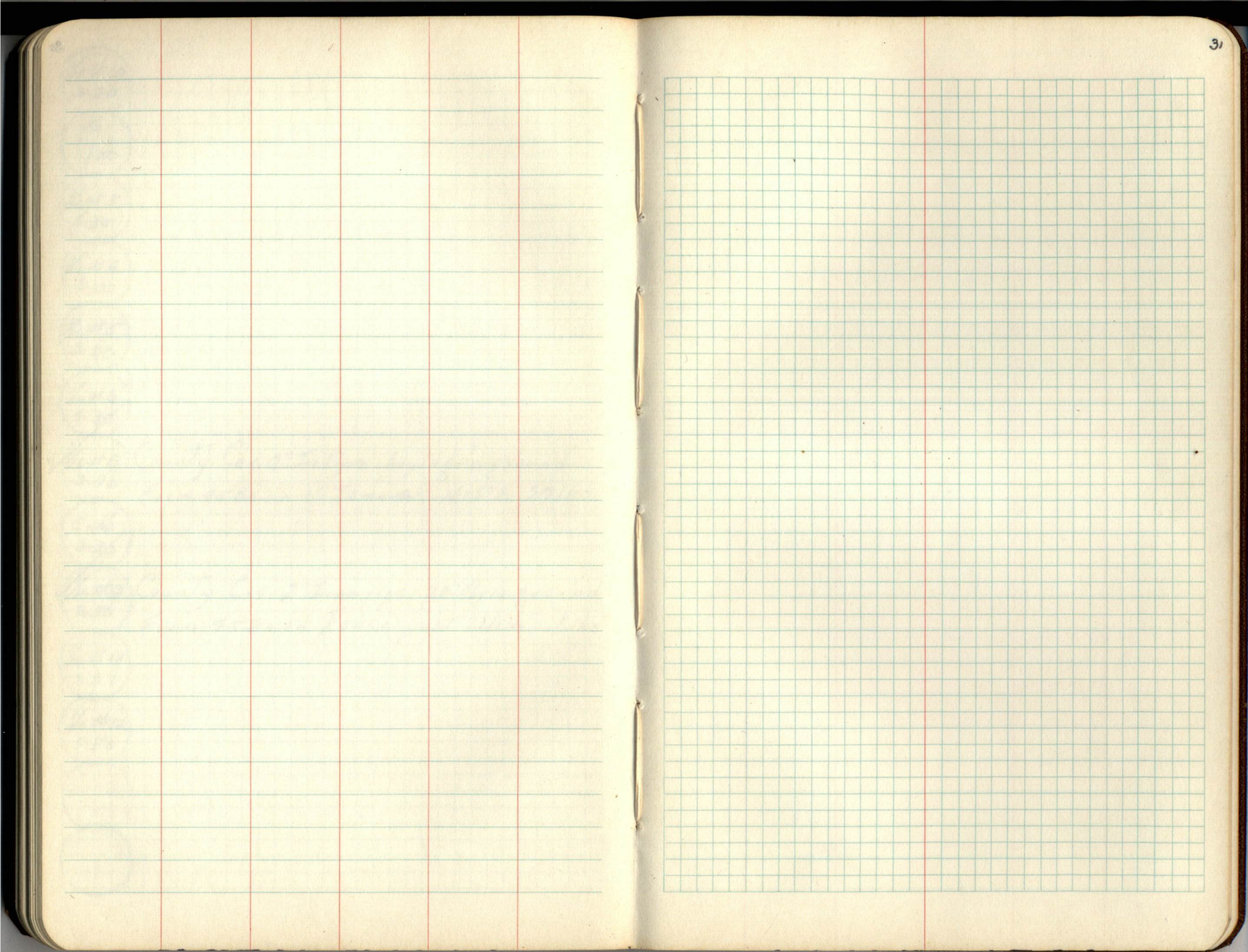
1/6 #11
5.30

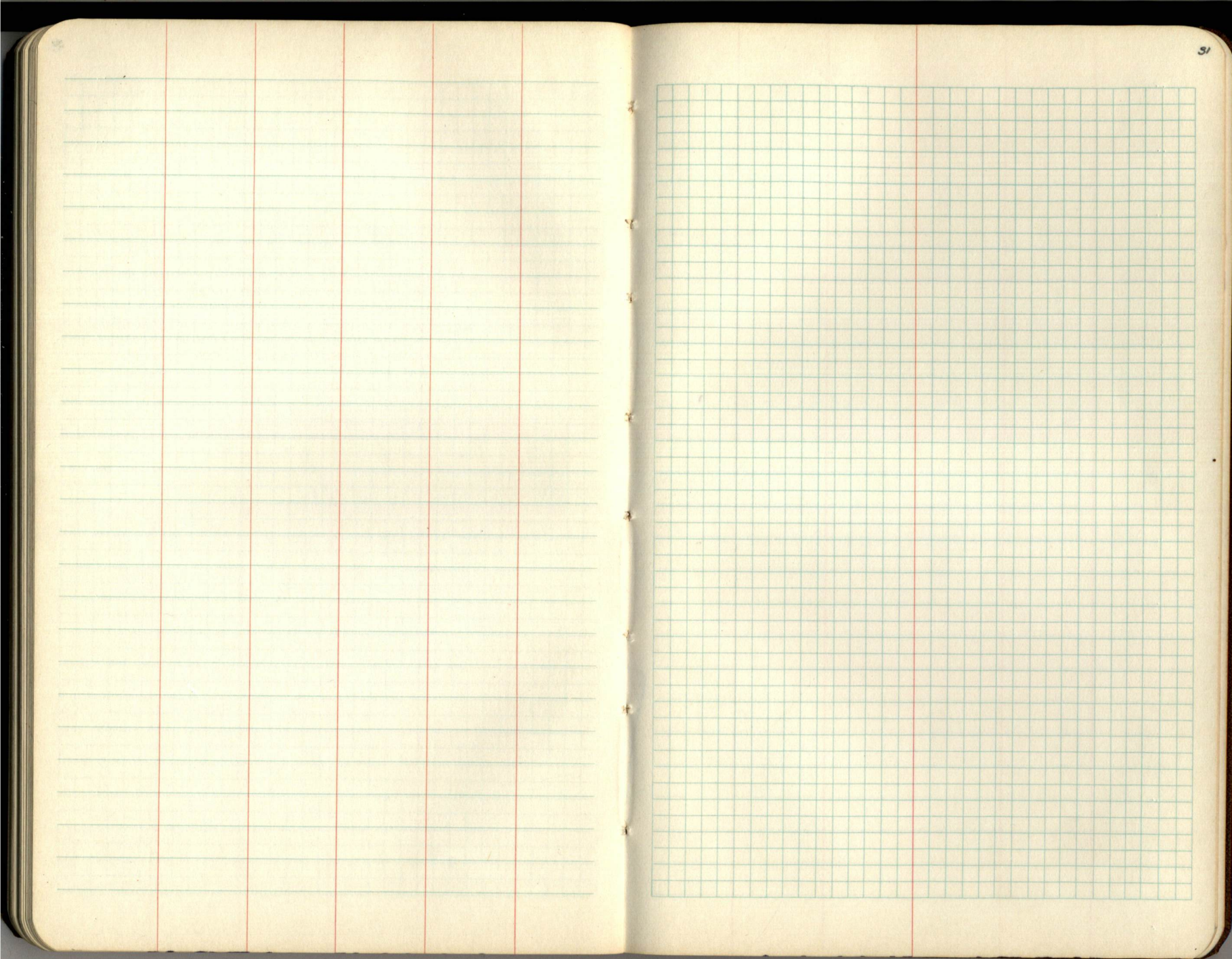
1/6 #12
5.30

1/6 #13
5.30

1/6 #14
5.30

1/6 #15
5.30





7



41NR302
29/33
32/33

G.L.O. 9" Square Aspen Post 29" High

B.T's 18" R. Pine stump N50°W 32ks. 14" R. Pine S33°W. 29ks.

1/6 #2
5.33

1/4 38
33

1/6 #1
5.33

41NR302
28/33
33/34

County Cor. 2" Iron pipe 36" Above ground

1/6 #7
5.33

33/34
M.C.

M.C.
33/34

33/34
M.C.

M.C.
33/34

41NR302
33/34

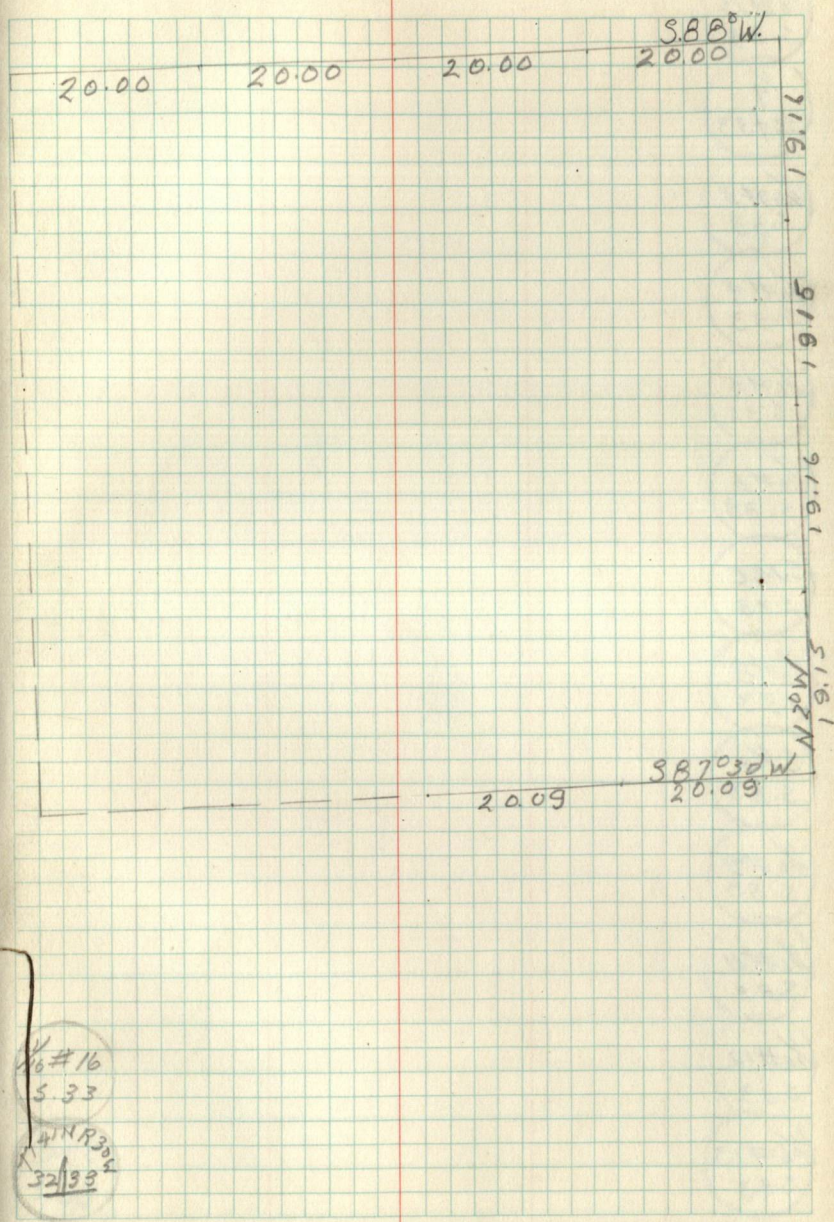
County Cor. (Pipe probably buried in road)

B.T. 9" Tamarack N40°W 88ks

1/6 #15

1/4
33

County Cor. 2" Iron pipe 18" Above ground



1/6 #10
S.33

1/4
32733

1/6 #3
S.33

1/6 #4
S.33

1/6 #5
S.33

1/6 #6
S.33

S.M.C.
S.33

1/6 #8
S.33

C/4
S.33

1/6 #9
S.33

1/6 #11
S.33

1/6 #12
S.33

1/6 #13
S.33

S.M.C.
S.33

AINR 30
28/27
33/34 County Cor. 2" Iron pipe 36" Above ground

87/39
MC

MC/27
34

1/6 #1
5.34

27/34
MC

AINR 30
27/26
34/35 County Cor. 2" Iron pipe 20" Above ground
Form 458 on 8" J. Pine N18°W 881ks.

1/6 #7
5.34

1/4
34/35

1/6 #14
5.34

AINR 30
34/35 County Cor. 2" Iron pipe 18" Above ground

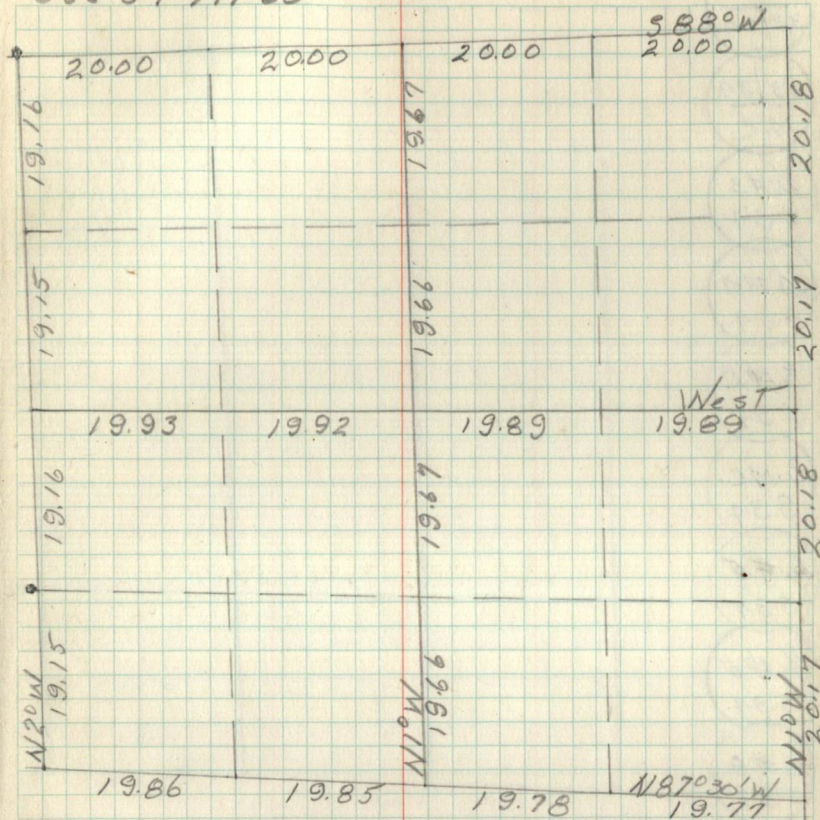
1/6 #15
5.34

1/4 County Cor. (Pipe probably buried in road)
34 B.T. 8" R. Oak N? E P1Ks

1/6 #16
5.34

AINR 30
33/34 County Cor. (Pipe probably buried in road)
33 B.T. 9" Tamarack N20°W 881ks.

34
Sec 34-141-30



M.C.
33/34
M.C.

M.C.
33/34

33/34
M.C.

1/6 #3
S.34

1/6 #4
S.34

S.M.C.
S.34

S.M.C.
S.34

1/6 #5
S.34

1/6 #6
S.34

1/6 #8
S.34

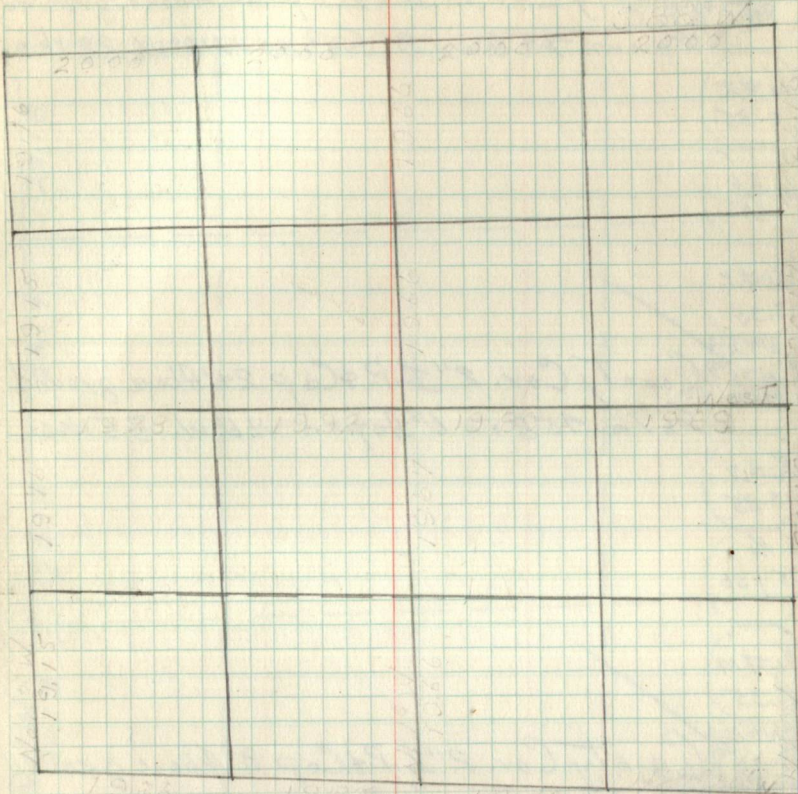
C.14
S.34

1/6 #9
S.34

S.M.C.
S.34

S.M.C.
S.34

1/6 #11
S.34



1/6 #12
S.34

1/6 #13
S.34

AIN R 30
2726
3755

County Cor 2" I.P. & Cap 20" Above ground
Form 458 on 8" S. Pine N18°W. 881ks.

1/6 #2
5.35

1/4 26
35

1/6 #1
5.35

AIN R 30
2625
3536

County Cor. 2" I.P. & Cap 24" Above ground
Form 458 on 6" Aspen N.6°W. 851ks.

1/6 #7
5.35

1/4
35+36

1/6 #14
5.35

AIN R 30
3536

County Cor. 2" I.P. & Cap 8" Above ground
Form 458 on 6" B. Ash S.53°W. 311ks.

1/6 #15
5.35

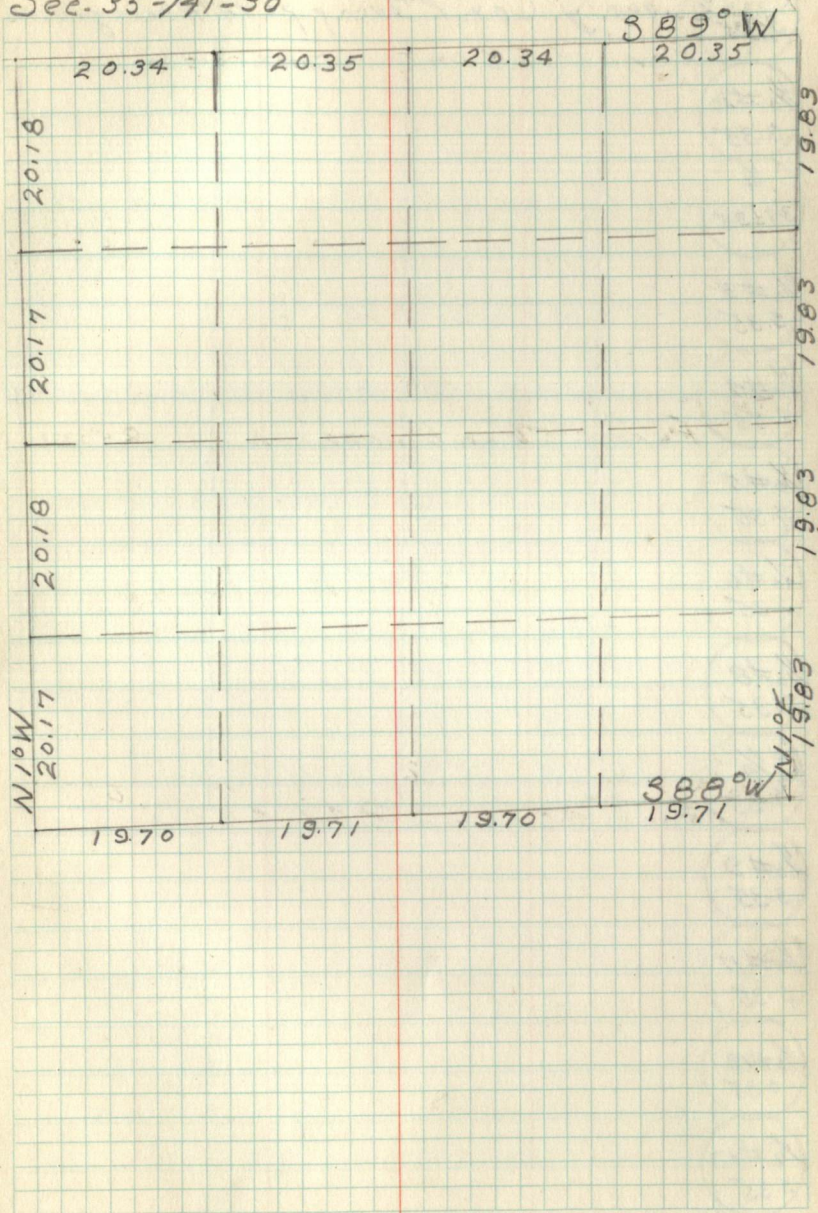
MC/35

County Cor. 2" Iron pipe 40" Above ground.

35/MC

1/6 #16
5.35

Sec. 35-141-30



RAIN R 30
34/35

County Cor. 2" Iron pipe 18" Above ground.

No #10
5.35

1/4
39/35

1/6 #3
5.35

1/6 #4
5.35

1/6 #5
5.35

1/6 #6
5.35

1/6 #8
5.35

C 1/4
5.35

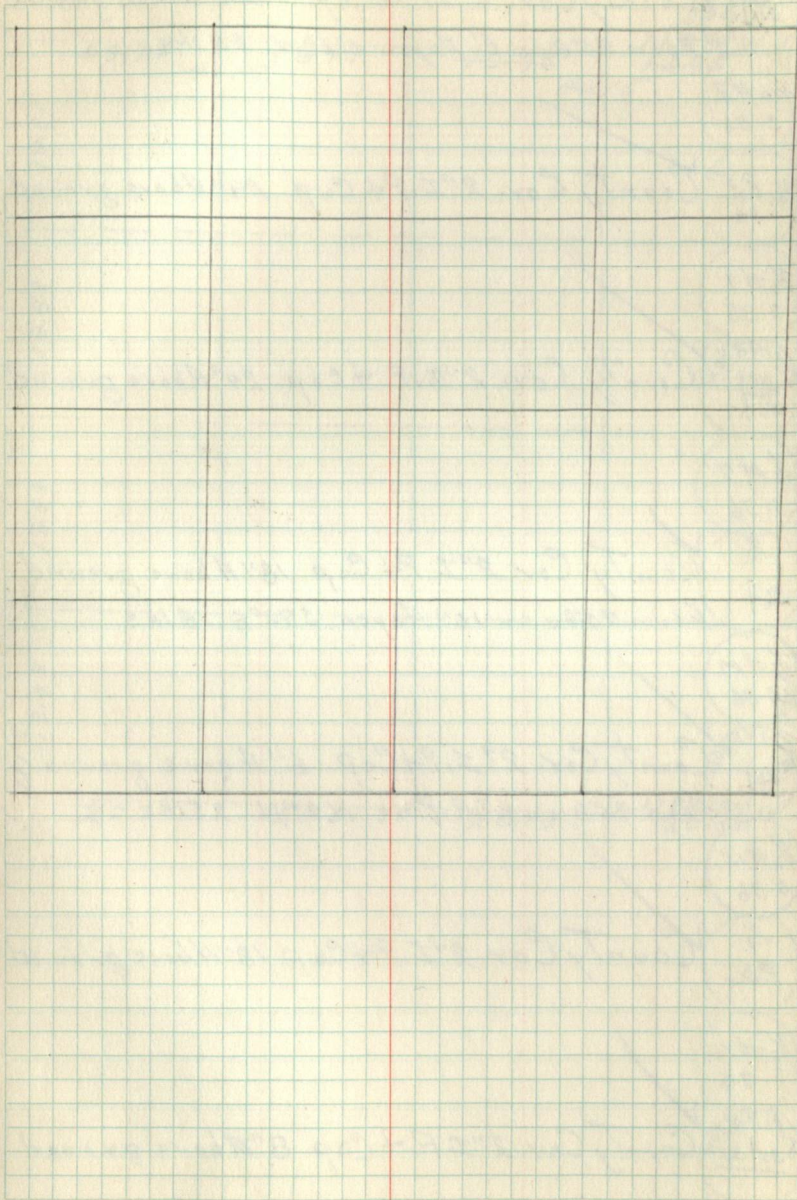
1/6 #9
5.35

1/6 #11
5.35

1/6 #12
5.35

1/6 #13
5.35

S.M.C.
5.35



AINR 30
26/25
35/36 County Cor. 2" I.P. Cap 29" Above ground
Form 458 on 6" Aspen N60W 85 lks.

1/6 #2
5.36

AINR 30
25/36 County Cor. 2" I.P. Cap 29" Above ground

1/6 #1
5.36

AINR 30
25/36 County Cor. 2" I.P. Cap 29" Above ground

1/6 #7
5.36

AINR 30
36/36 County Cor. 2" I.P. Cap 18" Above ground
Form 458 on 10" Aspen 573°E 18 lks

1/6 #14
5.36

AINR 30
36/36 County Cor. 2" I.P. Cap 6" Above ground
Form 458 on 6" R. Pine N.43°W 25 lks.

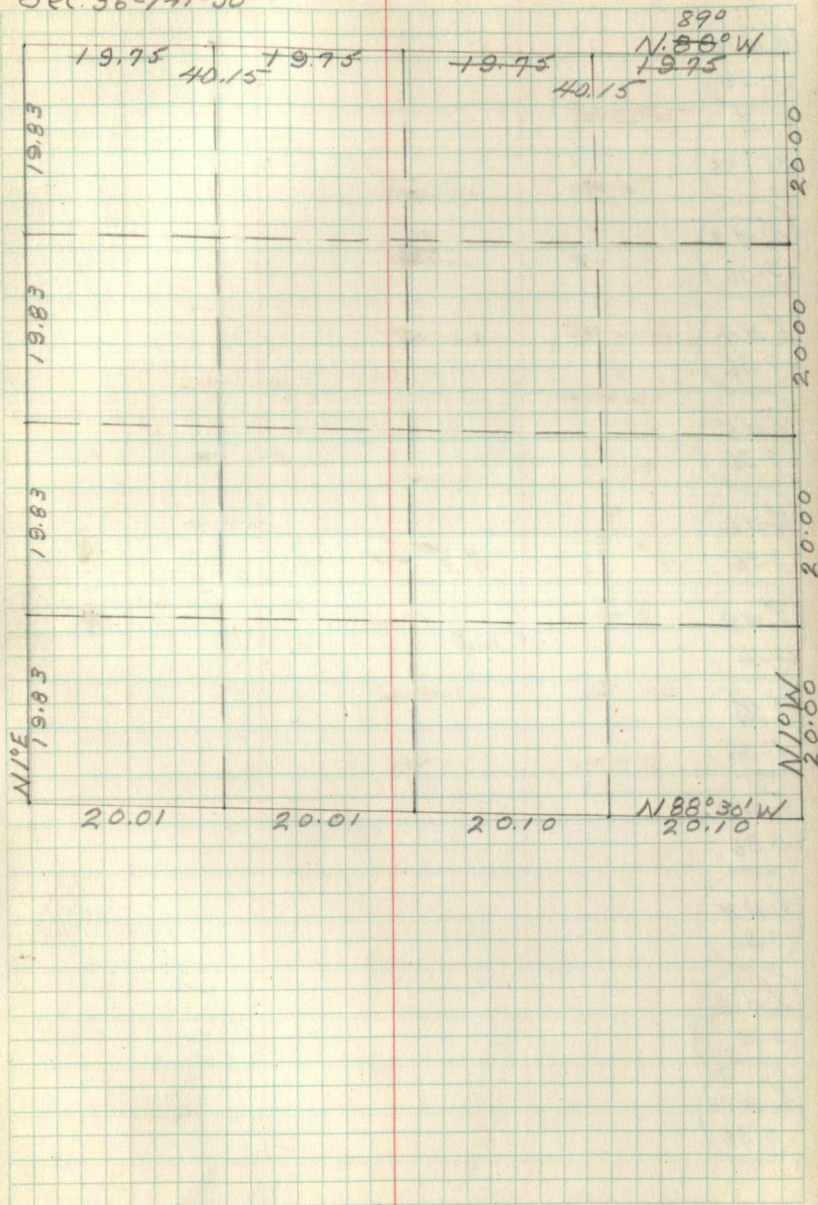
1/6 #15
5.36

AINR 30
36/36 County Cor. 2" I.P. Cap 18" Above ground

1/6 #16
5.36

AINR 30
35/36 County Cor. 2" I.P. Cap 8" Above ground

36
Sec. 36-141-30



1/6 #10
5.36

1/4
35 + 36

1/6 #3
5.36

1/6 #4
5.36

1/6 #5
5.36

1/6 #6
5.36

1/6 #8
5.36

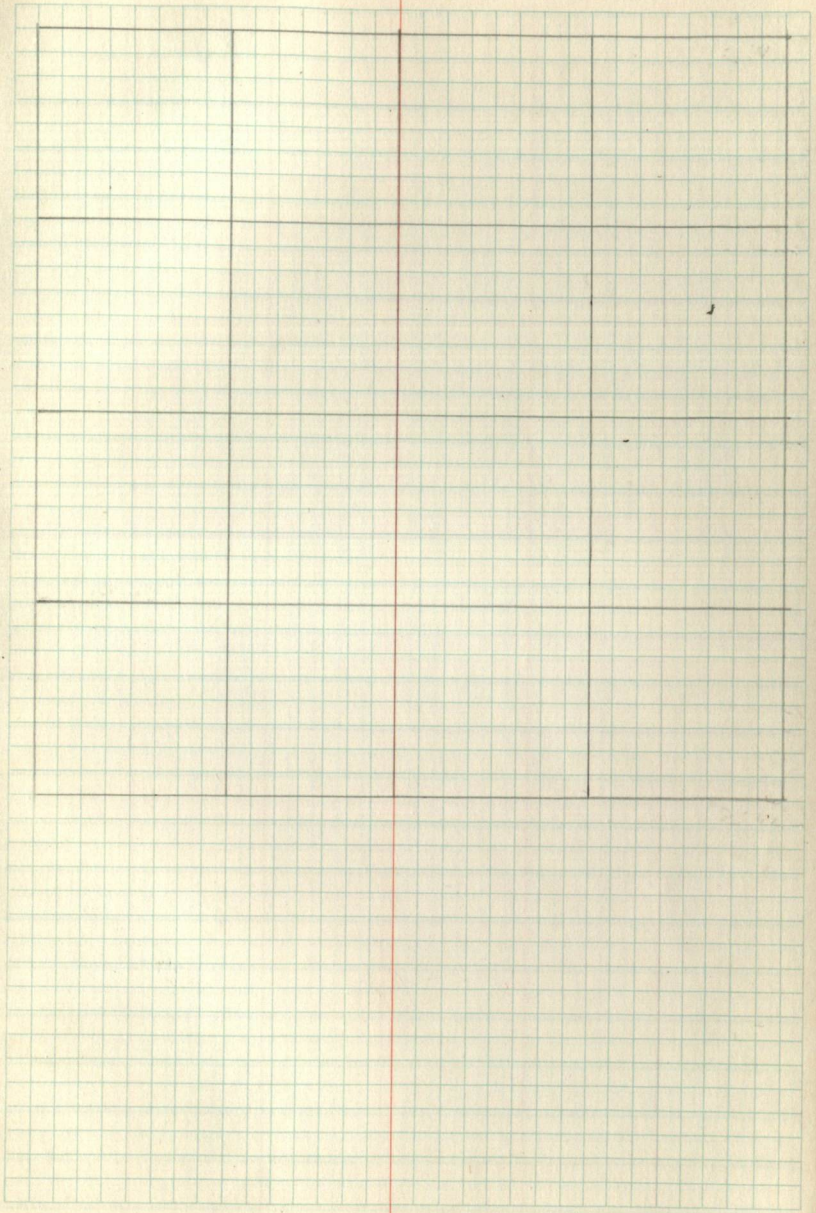
C 1/4
5.36

1/6 #9
5.36

1/6 #11
5.36

1/6 #12
5.36

1/6 #13
5.36



Pages 37-End
are Blank