

FIELD

141-28

# 105

W

MINING  
WENSHI 1000

CCC # 2A

found 1/12/92

DIRECTIONS FOR USE OF TABLES

TABLE No. 1

Distance of slope stake from side or shoulder  
stake for any width roadway slope 1N to 1.

---

---

IMPROVED TABLES  
AND  
INFORMATION

---

---

141-028  
Scanned  
July 2, 2012  
Ronney

RAIN ROSE

2/11

1/6 #2

S.1

1/4

S.1

1/6 #1

S.1

RAIN ROSE

S.1

1/6 #7

S.1

1/69

S.1

1/4

S.1

1/6 #14

S.1

1/69

S.1

RAIN ROSE

1/12

1/6 #15

S.1

1/4

1/2

1/6 #16

S.1

RAIN ROSE

2/11

11/12

1/6 #10

S.1

C. h. D. 9" I. M. of brass cap 36" Above ground  
F.S. Section line Marker South. I. M. has  
been pulled up in Road Construction.

1/4  
2+1

1/16 #3  
s.1

1/8  
~~2+1~~

1/64  
s.1

1/16 #4  
s.1

1/16 #5 G.h. O. 1" I.M. & brass Cap 6" Above ground  
s.1

1/16 #6  
s.1

1/64  
s.1

1/16 #8  
s.1

C. 1/4  
s.1

1/16 #9  
s.1

1/16 #11  
s.1

1/16 #12  
s.1

1/16 #13  
s.1

1/16  
s.1

M.C.  
1/32

TRAIN RAIL

2/1

1/64

5.2

1/64 #7

5.2

1/4

2+1

1/64 #14

5.2

TRAIN RAIL

2 1/2

11/12

1/64 #15

5.2

1/4

2/11

1/64

5.2

1/64 #16

5.2

TRAIN RAIL

3/2

10/11

1/64 #10

5.2

1/4

2+3

TRAIN RAIL  
3/2

S.M.C.  
S.2

H.M.C.  
S.2

S.M.C.  
S.2

1/6 #6  
S.2

S.M.C.  
S.2

1/6 #8  
S.2

C. 1/4  
S.2

1/6 #9  
S.2

1/6 #11  
S.2

1/6 #12  
S.2

1/6 #13  
S.2

2

PLAIN R282  
M.C. 2  
3/2

1/4  
3/2

1/6 #19  
5.2

PLAIN R282  
M.C. 2  
3/2  
10/11

1/6 #15  
5.3

1/4 3  
10

1/6 #16  
5.3

PLAIN R282  
M.C. 2  
3/2  
9/10

1/6 #10  
5.3

1/4  
4/3

1/6 #3  
5.3

PLAIN R282  
M.C. 2  
3/2

1/6 #4  
5.3

S.M.C  
S.3

S.M.C  
S.3

1/6#8  
S.3

C.14  
S.3

1/6#9  
S.3

1/6#11  
S.3

1/6#12  
S.3

1/6#13  
S.3



RAIN 5204

5/4

1/6 #2

5.4

1/4 1/2

1/6 #1

5.4

RAIN 5204

7/3

1/6 #7

5.4

1/4 1/2

4+3

1/6 #14

5.4

RAIN 5204

7/3

5/10

1/6 #15

5.4

1/6 7/5

1/4 4/5

1/6 #16

5.4

1/6 4/5

RAIN 5204  
5/4  
8/3

1/6 #10  
5.4

1/4  
5+9

1/4  
5+9

1/6#3

S.A.

1/6#4

S.A.

1/6#5

S.A.

1/6#5

S.A.

Approx Cor. set 3" oak post 36" above  
ground. Post on 6" birch 3 23" W 0.000"

1/6#6

S.A.

1/6#6

S.A.

1/6#7

S.A.

1/6#8

S.A.

1/6#9

S.A.

C. 1/9

S.A.

1/6#9

S.A.

1/6#9

S.A.

1/6#11

S.A.

1/6#12

S.A.

1/6#9  
S.A.

1/6#13  
S.A.  
W.C.

1/6#9  
S.A.

11  
615

1/6 #18  
5.5

Witness cor. set - 4" oak set 36" above ground 0.55 ch. S. 1° 39' W. of cor. Poster to Cor. on 4" Green N 37° W 0.555 ch.

1/4  
5.5

1/6 #1  
5.5

11  
514

1/6 #7  
5.5

1/4  
514

Corner destroyed by road work. Location given by Atwood-Poster set on Fence post 436 W. <sup>5/23/39</sup>

1/6 #14  
5.5

11  
819

1/6 #15  
5.5

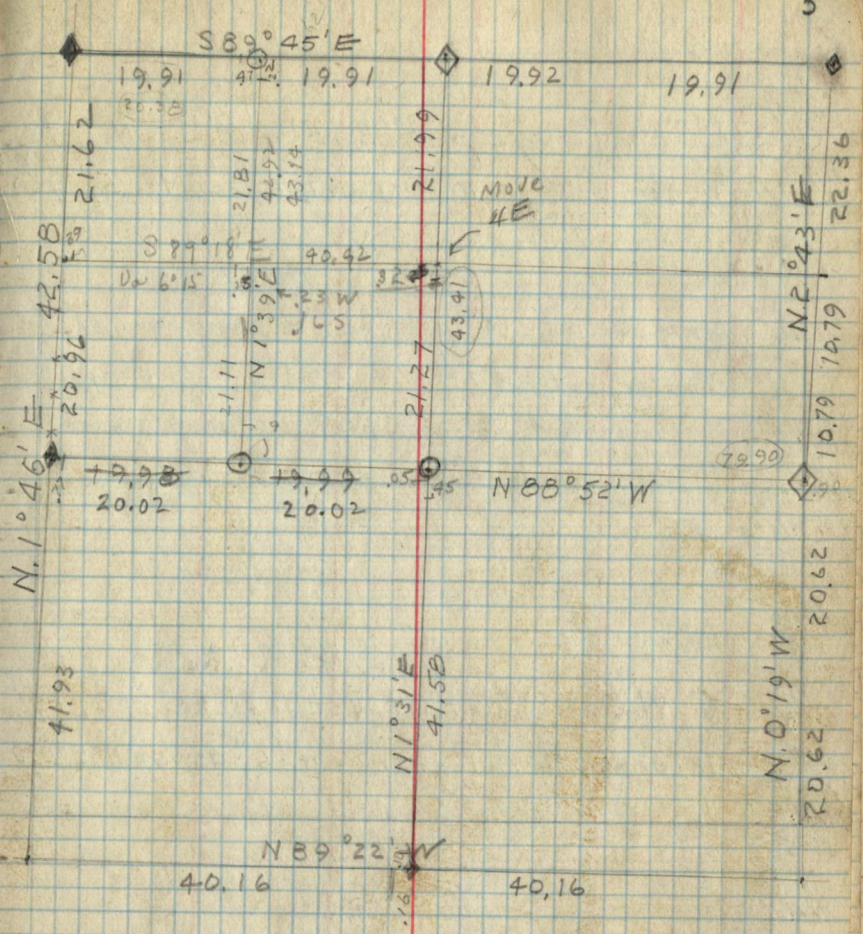
1/4  
8

1" I.M. 8" Brass Cap - No B.T.S. - Poster on 8" W. Oak .92 chs NW ✓

1/6 #16  
5.5

11  
718

Trott - 5-19-39



5  
22.36  
N 2° 43' E  
10.79  
10.79  
20.62  
20.62  
N 0° 19' W  
20.62

No #10  
S.S

1" I.M. Brass cap 8" above ground No BT's  
Poster set on 10" aspen 195 dhs N. 5/22/39

No #3  
S.S

Approx  
No #4  
S.S  
Approx. cor. set. 4" oak post 36" above ground. <sup>TY</sup>  
Poster set N 77° E 59 lks (6" popple)

No #5  
S.S  
Approx cor set 3" oak post 36" above ground.  
Poster on 6" birch S 23° W 0.08 ch. <sup>MY</sup>

No #6  
S.S

No #8  
S.S

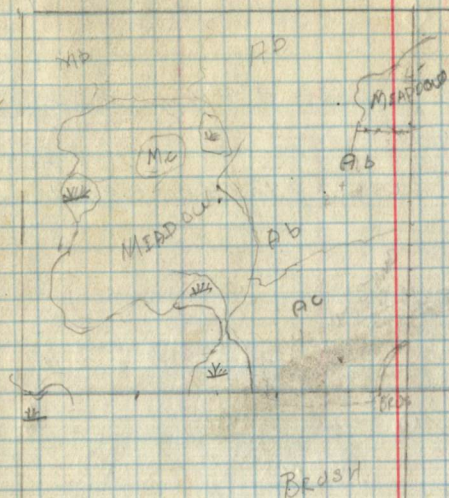
Approx.  
C/4  
S.S  
3" W. Oak - Set at established pt., by <sup>MY</sup>  
intersection. Poster on 6" aspen N 55° W 190

No #9  
S.S

No #11  
S.S

No #12  
S.S

No #13  
S.S



RAIN RISE  
16

1/2 #2 G.L.O. 1" I.M. + brass Cap 8" Above ground  
5.6 B.T. 14" W. Oak 531° E 211 ks.

1/4 #6 G.L.O. 1" I.M. + brass Cap 12" Above ground

1/2 #1  
5.6RAIN RISE  
6.51/2 #7  
5.61/4 #5  
6.51/2 #13  
5.6RAIN RISE  
6.5  
7.81/2 #15  
5.61/4 #4  
71/2 #16  
5.6RAIN RISE  
16  
171/2 #10  
5.6

S 88° 55' E

21.53

19.43

5.0° 45' E

21.83

50° 45' W

21.70

21.83

21.37

20.92

N 89° 51' W

18.96

51° 58' W

20.16

20.62

20.19

N 89° 01' W

18.26

6  
Sec. 6-14-28

1/4 #2

1/4 #3

5.6

1/4 #4

5.6

1/4 #5

5.6

1/4 #6

5.6

1/4 #8

5.6

1/4

G.L.O. 1" I.M. + brass Cap. 10" Above ground  
5.6 B.T. 6" R. Pine 5790E. 1021ks.

1/4 #9

G.L.O. 1" I.M. + brass Cap. 12" Above ground  
5.6 Form 958a on 16" Aspen 5310E 371ks.

1/4 #11

G.L.O. 1" I.M. + brass Cap 12" Above ground  
5.6 B.T. 10" R. Pine N60°E 301ks. Form 958a on B.T.

1/4 #12

5.6

1/4 #13

5.6

1/4

5.6

1/4

5.6

TRAIN R 284  
16  
17

1/6 #2  
5.7

1/4 6  
7

1/6 9  
5.7

1/6 #1  
5.7

TRAIN R 284  
615  
718

1/6 #7  
3.7

1/4  
778

2/8  
M.C.

71  
18/M.C.

1/4 7  
18

1/6 #16  
5.7

TRAIN R 284  
12  
118

1/6 #10  
5.7

1/57

1/6 #3  
S.7

1/6 #4  
S.7

1/6 #5  
S.7

1/6A  
S.7

1/6 #6  
S.7

S.M.C.  
S.7

S.M.C.  
S.7

S.M.C.  
S.7

C.1/4  
S.7

1/6 #9  
S.7

1/6 #11  
S.7

1/6 #12  
S.7

S.M.C.  
S.7



MINR 284  
6/5  
7/8

1/6 #2  
S.B

1/4 5  
8

1/6 #1  
S.B

MINR 284  
1 5/1  
8/5

1/6 #7  
S.B

1/6 9  
S.B

4  
8+9

1/6 #14  
S.B

1/6 9  
S.B

MINR 284  
8/8  
7/6

1/6 #15  
S.B

1/4 8  
17

ME 8  
17

8

7/8  
M.C.

1/4

778

1/6 #3

S.B.

1/6 #9

S.B.

1/6 #5

S.B.

1/6 #6

S.B.

1/6 4

S.B.

1/6 #8

S.B.

1/6 A

S.B.

C 1/4

S.B.

S.M.C.

S.B.

S.M.C.

S.B.

A.M.C.

S.B.

S.M.C.

S.B.

1/6 #12

S.B.

1/6 9

S.B.

1/6 #13

S.B.

1/6 9

S.B.

RAIN RISE  
5/8  
8/5

1/6 #2  
5.9

1/6 #2  
5.9

1/4 1  
9

1/6 #1  
5.9

1/6 #1  
5.9

RAIN RISE  
4 13  
9/10

1/6 #7  
5.9

1/4  
9/10

1/4  
9/10

1/6 #19  
5.9

RAIN RISE  
4 9 10  
18/15

1/6 #15  
5.9

1/4 2  
16

1/4 9  
16

1/6 #16  
5.9

RAIN RISE  
8 9  
17/16

1/6 #10  
5.9

4

879

1/6

879

1/6#3

5.9

1/6

5.9

1/6#4

5.9

1/6#5

5.9

1/6#6

5.9

1/6

5.9

1/6#8

5.9

C 1/4

5.9

1/6

5.9

1/6#9

5.9

1/6

5.9

1/6#11

5.9

1/6

5.9

1/6#12

5.9

1/6

5.9

1/6#13

5.9

1/6

5.9

MIN P. 28  
9/13  
9/10

1/6 #2  
5.10

1/4 3  
10

1/6 #3  
5.10

MIN P. 28  
9/13  
10/11

1/6 #7  
5.10

1/4  
10/11

1/6 #14  
5.10

MIN P. 28  
10/13  
15/14

1/6 #15  
5.10

1/4 10  
15

1/6 #16  
5.10

MIN P. 28  
9/13  
16/15

$\frac{1}{16}$  #10  
3.10

$\frac{1}{16}$   
3.10

$\frac{1}{16}$  #3  
3.10

$\frac{1}{16}$  #4  
3.10

$\frac{1}{16}$  #5  
3.10

$\frac{1}{16}$  #6  
3.10

$\frac{1}{16}$  #8  
3.10

e  $\frac{1}{16}$   
w.c.  
3.10

$\frac{1}{16}$  #9  
3.10

$\frac{1}{16}$  #11  
3.10

$\frac{1}{16}$  #12  
3.10

$\frac{1}{16}$  #13  
3.10

191-28  
212  
1011

W 1/6 2/11

1/4 2/11

1/4 2/11

G.h.O. 1" I.M + brass Cap. Pulled out of #34.

Setting against T.B.T. on North side of road.

E 1/6 2/11

F.S. Approx 1 1/2" Aspen post 9' high. On South shoulder #34.

191-28  
211  
1112

N 1/6 11/12

1/4 11/12

S 1/6 11/12

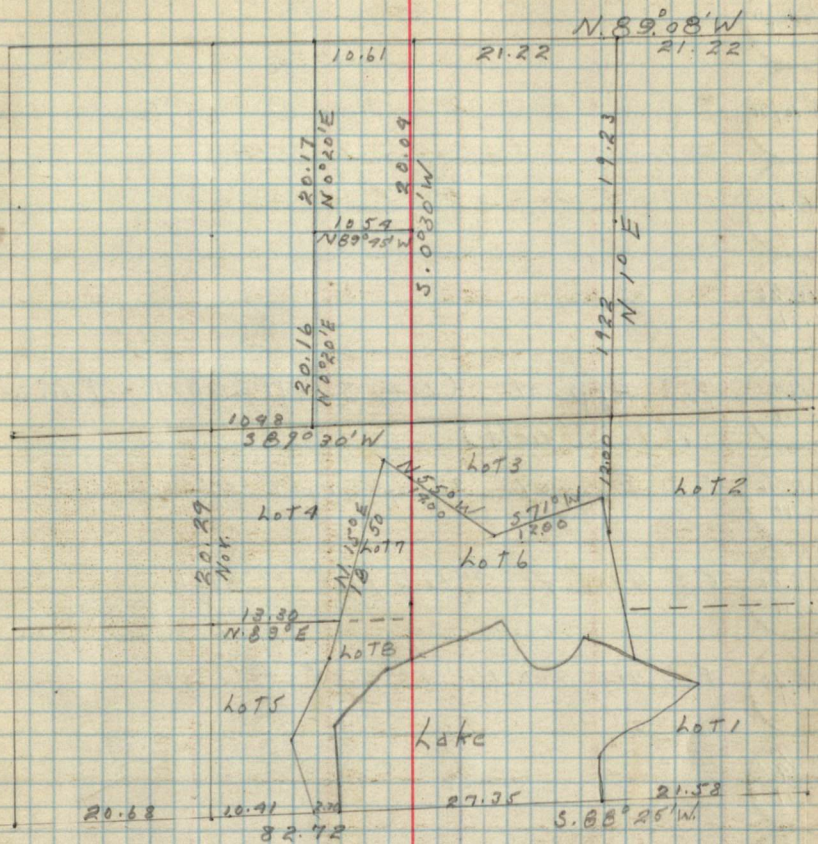
191-28  
1112  
1763

E.M.C. 11/14

W.M.C. 11/14

W 1/6 11/14

191-28  
1011  
1514



S<sup>1/2</sup> 20/11

W<sup>1/2</sup> 20/11

N<sup>1/2</sup> 20/11

NW<sup>1/4</sup>  
S. 11

1/29  
S. 11

F.S. Approx. (only small picket set in as it is in field)

C.N<sup>1/4</sup>  
S. 11

F.S. Approx. 2" Aspen post 9' high

NE<sup>1/4</sup>  
S. 11

F.S. Approx. 2" oak post 9' high

C.E<sup>1/4</sup>  
S. 11

F.S. Approx. 1 1/2" oak post 9' high

@ 1/4  
S. 11

1/62  
S. 11

F.S. Approx. 2" Oak post 9' high

C.W<sup>1/4</sup>  
S. 11

No. post set as it falls in farmers always field.

SW<sup>1/4</sup>

F.S. Approx. 2" Birch Post 9' high

LoT Cor  
2/13  
2/16

LoT Cor  
2/17  
5/18

F.S. Approx. 2" Birch Post 9' high

HRV. # 39

1h



1h

1h





C/4512

G.L.O. 1" I.M. 6" high.

B.T. 12" R. Pine N. 99° W. 1911 ks

N/10/512

G.L.O. 1" I.M. 12" high

B.T. 10" Elm S 76° W 901 ks

1/6 #6

F.S. 3" Aspen Post 4' high

5.12

1/6 #7

F.S. 3" Aspen Post 4' high

5.12

1/4 IN R 28

21/12

1/6 #2

5.12

1/9

12

1/6 #1

5.12

1/4 IN R 29

12/12

1/4

12

1/6 #17

G.L.O. 1" I.M. 6" high

5.12

1/6

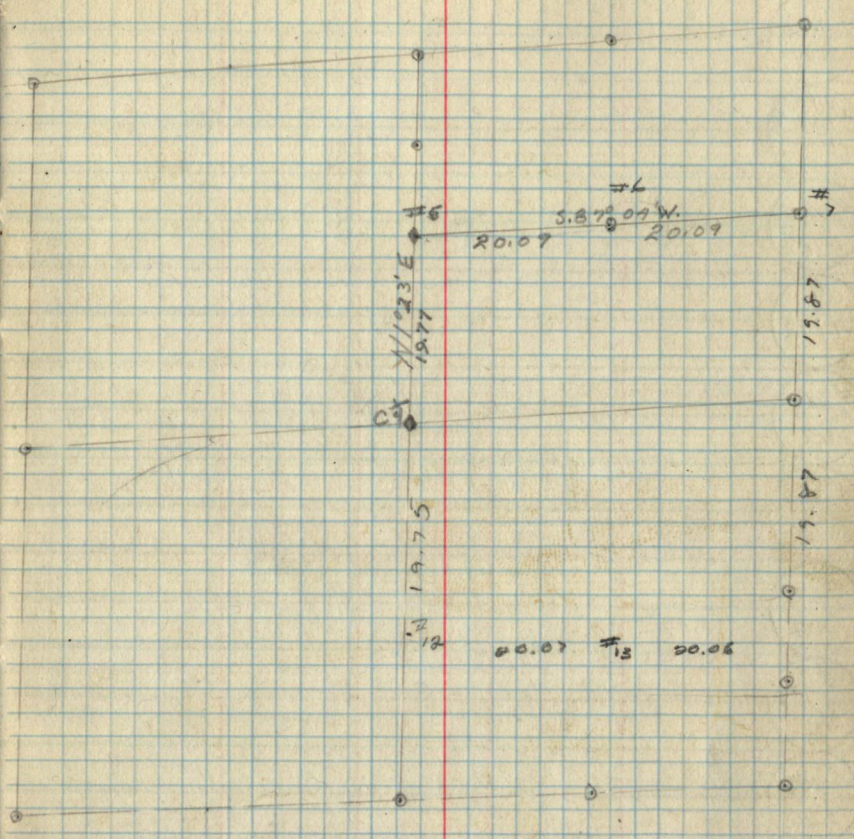
5.12

1/4 IN R 30

12/13

1/6 #15

5.12



1/12  
13

No #16  
5.12

RAIN RISE  
11/12  
1913

No #10  
5.12

1/2  
11/12

No #3  
5.12

No #7  
5.12

1/6  
5.12

1/6  
3.12

No #8  
5.12

No #9  
5.12

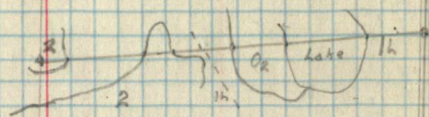
No #11  
5.12

No #12  
5.12

No #13  
5.12

1/6  
5.12

F.S. 3" Aspen Post 4' high



1/6  
5.12

AIN 2204  
11/12  
19/13

1/6 #2  
5.13

1/4 12  
13

1/64 12  
13

1/6 #1  
5.13

AINR 204  
12/13

5.13  
M.C.

M.C.  
5.13

AINR 204  
13/29

M.C. 18  
29

13/29  
M.C.

AIN 2204  
14/13  
23/29

1/6 #10  
S.13

1/4  
12/13

1/6 #3  
S.13

1/6 #4  
S.13

1/6 #5  
S.13

1/64  
S.13

1/6 #6  
S.13

S.M.E  
S.13

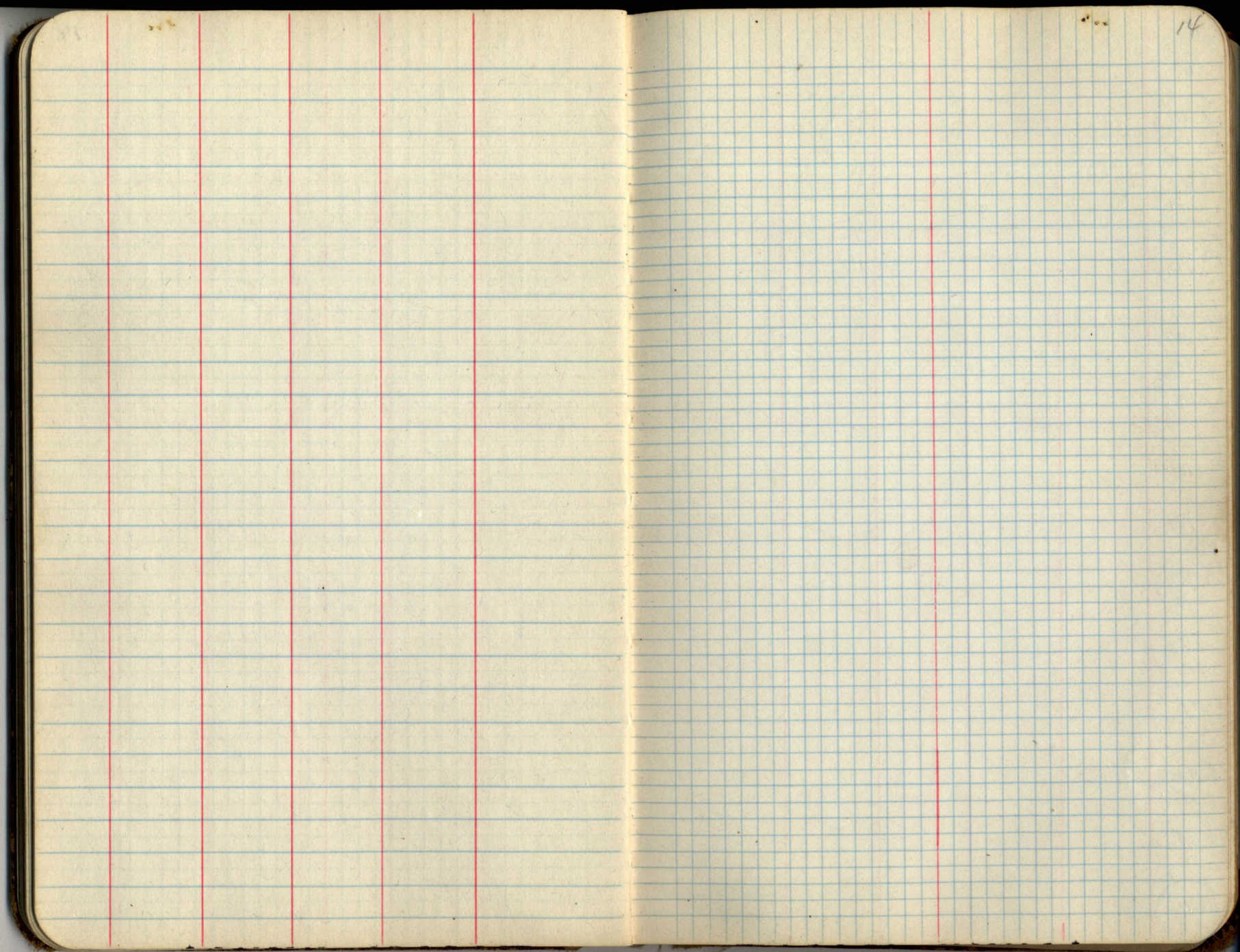
C/4  
S.13

1/6 #9  
S.13

S.M.C  
S.13

S.M.C  
S.13





RAIN 12.30  
9/10  
18/15

1/10  
15

1/10 #2  
5.15

1/10  
15

1/10 #1  
5.15

RAIN 12.30  
10/11  
15/19

1/10 #7  
5.15

1/10  
15 + 19  
W.C.

1/10 #14  
5.15

15/19  
M.C.

15/1  
22/M.C.

1/10 #15  
5.15

1/10  
15  
22

1/10 #16  
5.15

RAIN 2/22  
15/15  
21/22

1/6 #10  
5.15

9  
16/15

1/6 #3  
5.15

1/6 4  
5.15

1/6 #4  
5.15

1/6 #5  
5.15

1/6 #6  
5.15

1/6 #8  
5.15

C 1/4  
5.15

1/6 #9  
5.15

1/6 #11  
5.15

1/6 #12  
5.15

1/6 #13  
5.15



WIN 2284  
8 19  
17/16

1/6 #2  
5.16

1/4 9  
16

1/4 9  
16

1/6 #1  
5.16

WIN 2284  
8 10  
16/15

1/6 #7  
5.16

1/4  
16/15

1/6 #19  
5.16

WIN 2284  
8 16  
21/22

1/6 #15  
5.16

1/4 16  
21

1/6 #16  
5.16

WIN 2284  
8 17  
20/21

1/6 #10  
5.16

$\frac{1}{4}$   
17/16 $\frac{1}{6}\#3$   
5/16 $\frac{1}{6}\#9$   
5/16 $\frac{1}{6}\#5$   
5/16 $\frac{1}{6}A$   
5/16 $\frac{1}{6}\#6$   
5/16 $\frac{1}{6}\#8$   
5/16 $\frac{1}{6}A$   
5/16 $C/A$   
5/16 $\frac{1}{6}\#9$   
5/16 $\frac{1}{6}\#11$   
5/16 $\frac{1}{6}\#12$   
5/16 $\frac{1}{6}A$   
5/16 $\frac{1}{6}\#13$   
5/16 $\frac{1}{6}A$   
5/16

RAIN P. 28  
13  
17

$\frac{1}{6}\#2$   
5.17

$\frac{1}{4} \frac{8}{17}$

$\frac{1}{6}\#1$   
5.17

RAIN P. 28  
8  
17/6

$\frac{1}{6}\#7$   
5.17

$\frac{1}{4}$   
17+16

$\frac{1}{6}\#14$   
5.17

RAIN P. 28  
17/6  
20/21

$\frac{1}{6}\#15$   
5.17

$\frac{1}{4} \frac{17}{20}$

$\frac{1}{6}\#16$   
5.17

RAIN P. 28  
18/17  
17/20

$\frac{1}{6} 9$   
18+17

$\frac{1}{4}$   
18+17

M.C.  
18/17

18/17  
M.C.

1/6 #3  
S.17

M.C.  
18/17

1/6 #4  
S.17

1/6 #5  
S.17

1/6 #6  
S.17

1/6 #8  
S.17

C/4  
S.17

1/6 #9  
S.17

S.M.C  
S.17

S.M.C  
S.17

S.M.C  
S.17

S.M.C  
S.17

1/6 #11  
S.17

1/6 #  
S.17

1/6 #12  
S.17

1/6 #13  
S.17

TRAIN ROOM  
7  
1/8

1/6 #2  
S.18

1/4  
7  
18

1/6 #1  
S.18

7  
18/M.C.

M.C.  
18/17

18/17  
M.C.

M.C.  
18/17

1/4  
18+17

1/6 #14  
S.18

TRAIN ROOM  
18/17  
19/20

1/6 #15  
S.18

1/4  
18  
19

1/6 #16  
S.18

TRAIN ROOM  
7  
1/8

1/6 #10  
S.18

1/64  
S.18  
4  
F.18

1/64  
S.18

1/6 #3  
S.18

1/6 #4  
S.18

1/6 #5  
W.C.  
S.18

1/6 #6  
S.18

1/6 #8  
S.18

C 1/4  
S.18

1/6 #9  
S.18

1/6 9  
S.18

1/6 9  
S.18

1/6 #11  
S.18

1/6 #12  
S.18

1/6 #13  
S.18

RAIN 2021  
1/8  
1/9

1/6 #2  
5.19

4 18  
19

1/6 #1  
5.19

RAIN 2021  
1/8  
1/9

1/6 #7  
5.19

4  
19/20

1/6 #14  
5.19

RAIN 2021  
1/8  
30/29

1/6 #15  
5.19

4 18  
30

1/6 #16  
5.19

RAIN 2021  
1/8  
1/30  
W.C.

1/6 #10  
5.19

4  
7.19

1/6 #3  
5.19

1/6 #4  
5.19

1/6 #5  
5.19

1/6 #6  
5.19

1/6 #8  
5.19

C 1/4  
5.19

1/6 #9  
5.19

1/6 #11  
5.19

1/6 #12  
5.19

1/6 #13  
5.19



AIN R209  
18/19  
19/20

1/6 #2  
5.20

1/4 17  
20

1/6 #1  
5.20

AIN R208  
17/18  
20/21

1/6 #7  
5.20

1/4  
20/21

1/6 #14  
5.20

AIN R207  
20/21  
23/23

1/6 #15  
5.20

1/4 20  
29

1/6 #16  
5.20

AIN R206  
19/20  
30/29

1/6 #10  
5.20

1/4  
19/20

1/6 #3  
5.20

1/6 #4  
5.20

1/6 #5  
5.20

1/6 #6  
5.20

1/6 #8  
5.20

1/6 #9  
5.20

C 1/4  
5.20

1/6 #9  
5.20

1/6 #11  
5.20

1/6 #12  
5.20

1/6 #13  
5.20

1/6 #4  
5.20

WIN 528  
17/16  
20/21

1/6 #2  
5.21

1/4  
16  
21

1/6 #1  
5.21

WIN 528  
16/15  
21/22

1/6 #7  
5.21

1/4  
21/22

1/6 #19  
5.21

WIN 528  
21/22  
28/27

1/6 #15  
5.21

1/4  
21  
28

1/6 #16  
5.21

WIN 528  
20/21  
23/20

1/6 #10

5.21

1/4

20/21

1/6 #3

5.21

1/6 #4

5.21

1/6 #5

5.21

1/6 #6

5.21

1/6 #8

5.21

C/9

5.21

1/6 #9

5.21

1/6 #11

5.21

1/6 #12

5.21

1/6 #13

5.21

AINR 28  
R 16/15  
21/22

1/6 #2  
5.22

4/15  
22

1/6 #1  
5.22

15/M.C.  
22/23

M.C.  
22/23

4  
22/23

1/6 #19  
5.22

AINR 28  
R 22/23  
27/26

1/6 #15



23  
Pages 23-27A  
are blank

1191N R28  
20128  
32133

G.L.O I.M. loc. in road. B.T's, 8" R. Pine N33°E 971ks  
10" R. Pine N63½°W 991ks. Form 458 on each B.T.

5/6  
29/28

See Sec. 29

5/6  
29/28

See Sec. 29

1/4  
29/28

See Sec. 29

N. 1/6  
29/28

See Sec. 29

1191N R28  
20121  
29128

W 1/6  
28/33

County 2" I.M. 10" high B.T. 6" R. oak S11°E 661ks  
Form 458 on B.T. I.N. south ditch of Hack. Lang. road

1/4  
28/33

F.S. 2" Aspen Post 9' high set from G.L.O. B.T's.  
Form 458 on  
10" R. Pine S51°E 8" Aspen Stub N70°E 21ks. each B.T.

E 1/6  
28/33

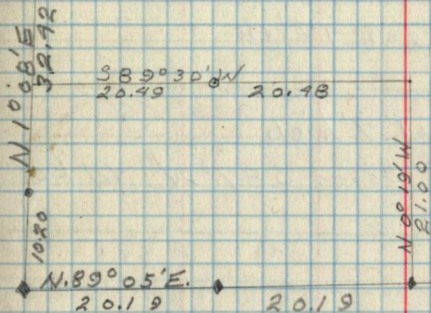
1191N R28  
28127  
33134

5/6  
28/27

1/4  
28/27

N 1/6  
28/27

1191N R28  
28122  
28127





1/6 #4  
5.28

1/6 #5  
5.28

1/6 #6  
5.28

1/6 #8  
5.28

C 1/4  
5.28

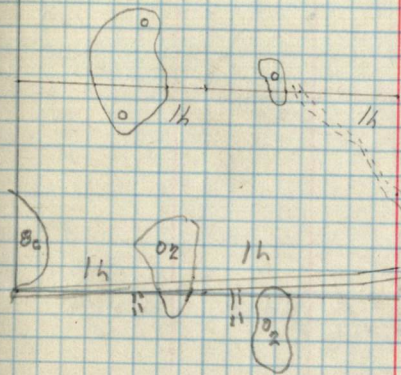
1/6 #9  
5.28

1/6 #11 F. S. 2" Aspen Post 4' high  
5.28

1/6 #12 F. S. 2" Aspen Post 4' high  
5.28 Form 458a on 3" Aspen 587° W 61 ks.

1/6 #13  
5.28

==



Sec. 29-141-28

MAIN ROAD  
30129  
31152  
W.C.  
2" I.P. G.L.O. 12" high - Set in mound of rock  
(Located by J. A. Gjelhaug)

30/29  
C.C.

1/4 30/29

N 1/2 30/29

19 120  
3029

W 1/2 20/29

1/4 20/29

E 1/2 20/29

20 121  
29128

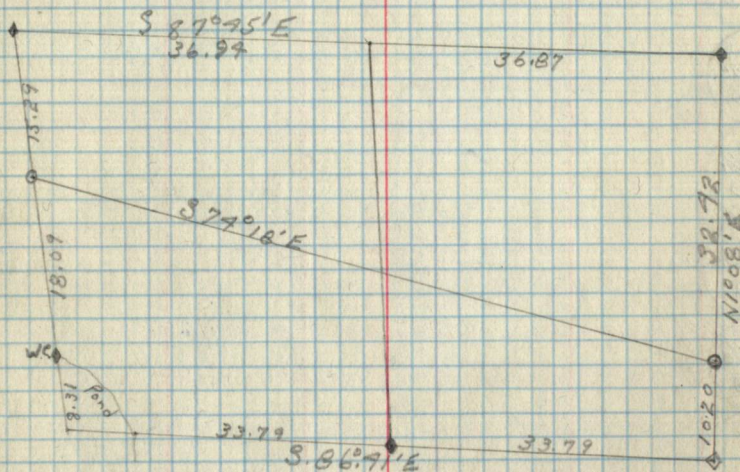
N 1/2 29/28

1/4 29/28 G.L.O. 1" I.M. & brass Cap. B.T.s. 6" Aspen N 25° E. 1.25 ch.  
R. Pine N 70° W. 2.90 chains.

17 1/2 29/28  
29/28  
C.C.  
3" Oak Post 5' high. On Res. line. B.T. 8" Red Pine  
N. 79° W. 1.27 chs. (Set by J. A. Gjelhaug.)

29/28  
32/23  
B.T.s. 8" R. Pine N 39° E. 99 ch. 10" R. Pine N 63 1/2° W. 99 ks.  
Form 75 ft. on both B.T.s. Pipe last in road. G.L.O.

15 1/2 29/28  
F.S. 2" Aspen Post 4' high.



C. 1/4  
S. 29  
G. L. O. 1" I. M. 4 brass Cap. 8" high  
Form 458a on R" oak N60W 10k5

C. E. 1/8  
S. 29

C. W. 1/8  
S. 29

N. W. 1/8  
S. 29

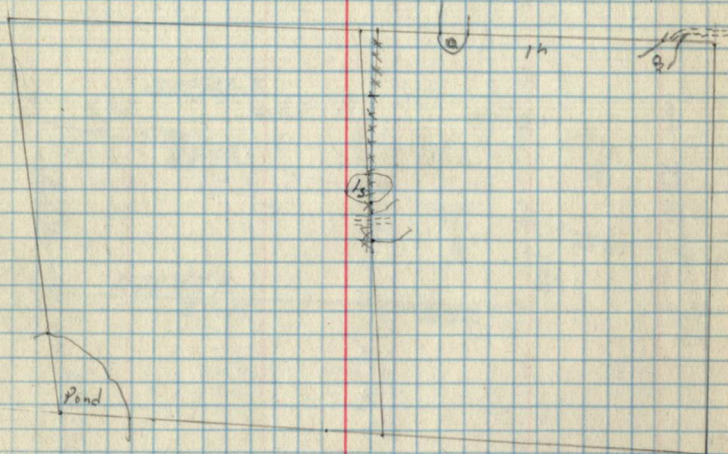
N. E. 1/8  
S. 29

S. E. 1/8  
S. 29

S. W. 1/8  
S. 29

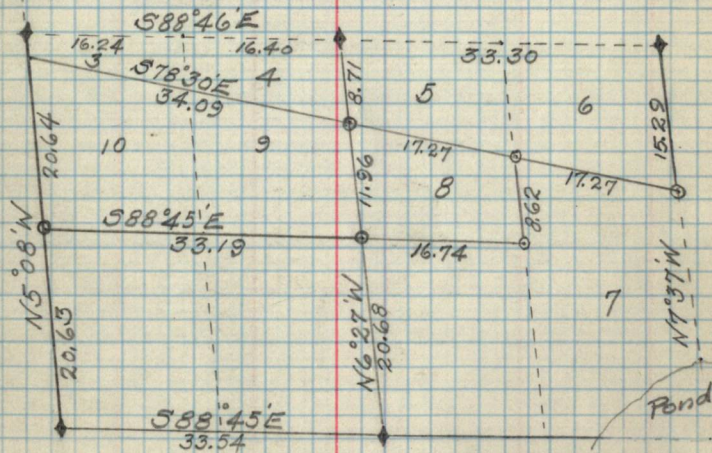
C. N. 1/8  
S. 29

C. S. 1/8  
S. 29



- CS 1/16 Set 4" Aspen Post 36" - Approx. Corner  
Form 458a on R. Pine 10" S75E 0.15 chs.  $\frac{7}{16}$  1940
- SE 1/16 Set 4" W. Oak Post - 36" Approx. Cor.  
Form 458a on R. Pine 7" N45E 0.2 chs.  $\frac{7}{16}$  1940
- NE cor. Lot 8 Set 3" Aspen Post  $\frac{7}{16}$  1940  
Form 458a on Birch 3" S73E 0.06 chs
- NW corner Lot 8 Set 3" Aspen Post - 30"  $\frac{7}{16}$  1940  
Form 458a on Aspen 3" South 0.18 chs.

S. 30 T. 141 N., R. 28 W.



Pages 30A-33A  
are blank

AINR 201  
28121  
53159

1/6 #2  
5.34

1/4 W.C.  
27  
34

1/6 #1 County Cor. 2" I.M. 24" Above ground.  
5.34

AINR 201  
27126  
34155  
G.H.O. 2" I.M. + brass Cap. Flush with ground.  
Form 458 3" Aspen S48°E. 61 ks.

Z.R.B. County Cor. 2" I.M. Flush with ground  
34135 Form 458 on 2" W. Pine N59°W 48 ks.

1/4 County Cor. 3" Cedar post 18" Above ground  
34135 B.Ts. 6" Cedar N31°W 12 ks. 8" Cedar N62°E 19 ks.

1/6 #14  
5.34

AINR 201  
34135

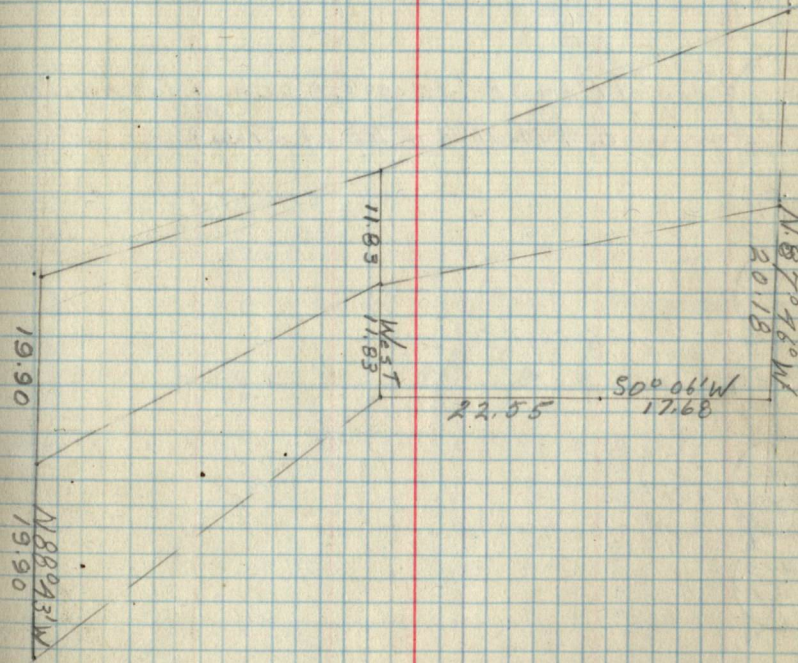
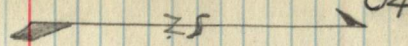
1/6 #15  
5.34

1/4  
5.34

1/6 #16  
5.34

AINR 201  
34135

1/6 #10  
5.34



1/4

39+39

1/6 #3

5.39

1/6 #4

5.39

1/6 #5

5.39

1/6 #6

5.39

1/6 #8

5.39

C. 1/4

5.39

1/6 #9

5.39

1/6 #11

5.39

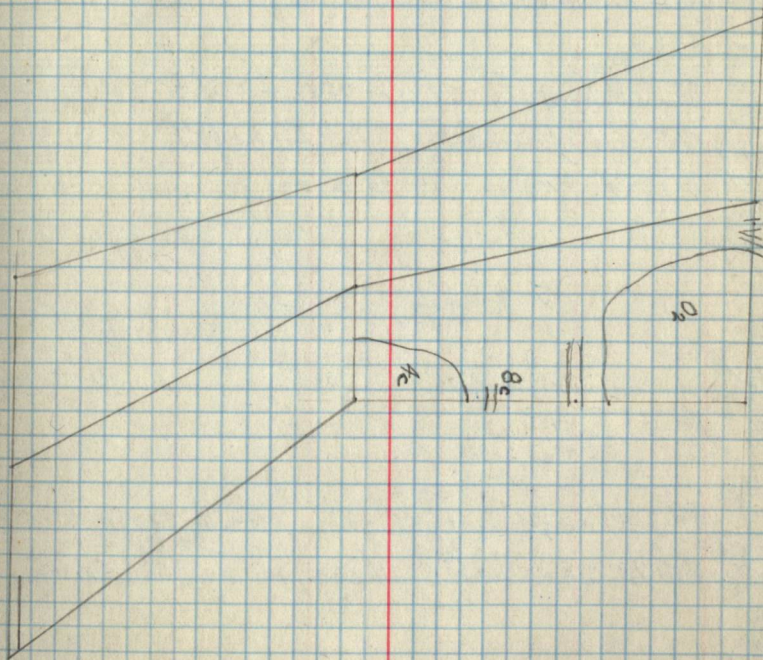
1/6 #12

5.39

1/6 #13

5.39

County Cor. 8<sup>th</sup> Square Rock. x lush with  
ground. + Marked in top of Stone



27/35  
37/35

2" I.P. G.L.O. - Set in large mound of stones  
Form 458a - 3" Aspen 368°E 611ks

W/6  
26/35

1" I.P. G.L.O. - 6" Form 458a - 3" Tam'c - S57½°E, 0.08ch  
B.T. 8" Cedar - N49½°W 0.56chs; Tam'c Stump - 9" S18°W 0.72chs

1/4  
5.26  
5.35

E/6  
26/35

1" I.P. G.L.O. - 6" - Form 458a - 3" Tam'c - S6½°E 0.20chs

26/35  
35/36

2" I.P. G.L.O. 12" 7" Scribed Tamarack post 7"

N/6  
27/35

2" I.P. County - Form 458a - 7" W. Pine N57°W 0.07chs

1/4  
39/35

4" Squared cedar Post 18" high - B.T. 6" Cedar N31½°W  
Form 458 E. S. 30°E  
0.12ch. 8" Cedar N62½°E 0.19ch. 3" 0.02ch 6" cedar.

5/6  
39/35

3/1  
35

35  
W/6

5.35

3/4" I.M. and Cedar Post set in mound of rock. (9/27/38)

1/4 C.C.

B.T. 12" S. Pine N4½°E 116 lks. Set by J.A. Gjelhaug

5.35

E/6 C.C.

35/36

3 sided Cedar post 6" x 36" County Corner

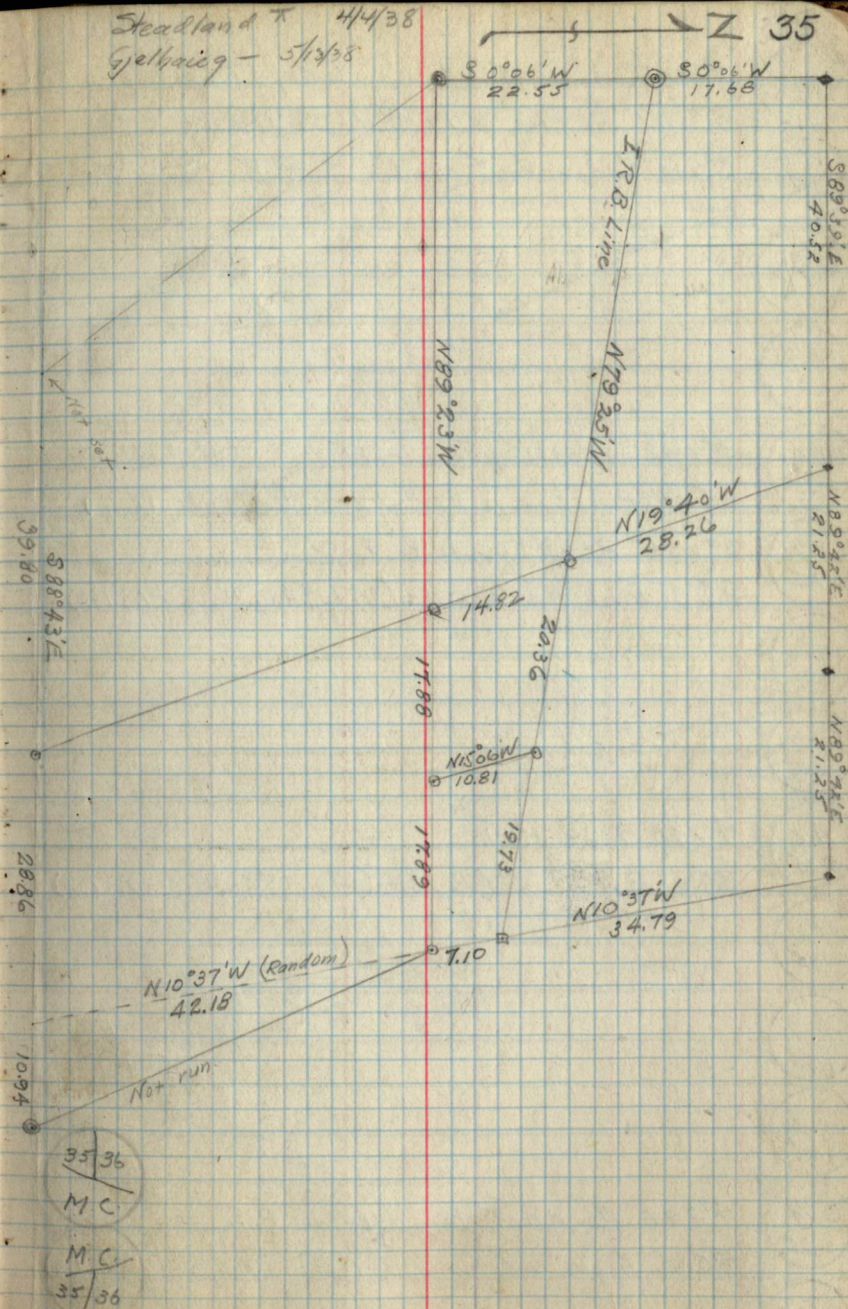
C.C.

B.T. 7" Cedar N59°E 15 lks 9" Cedar N29½°W 29 lks.

M.C.

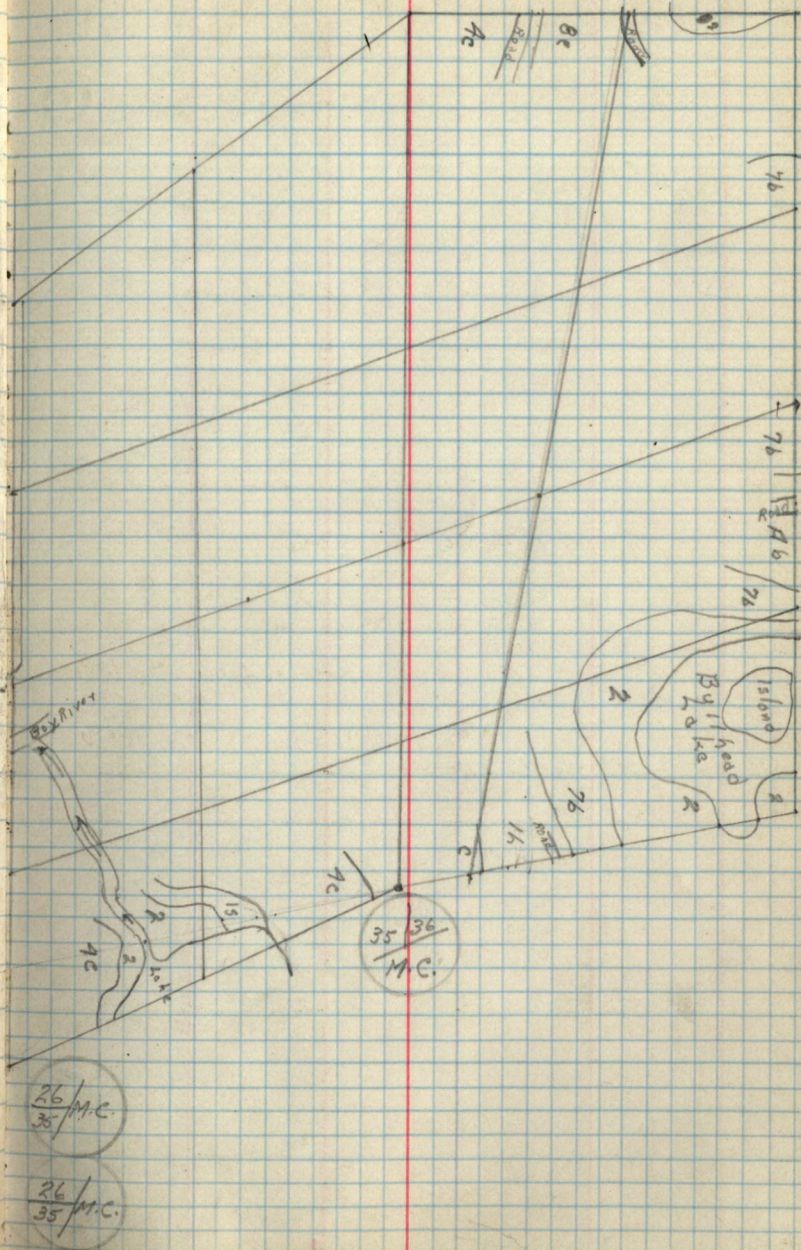
35/36

Steadland X 4/4/38  
Gjelhaug - 5/1/38





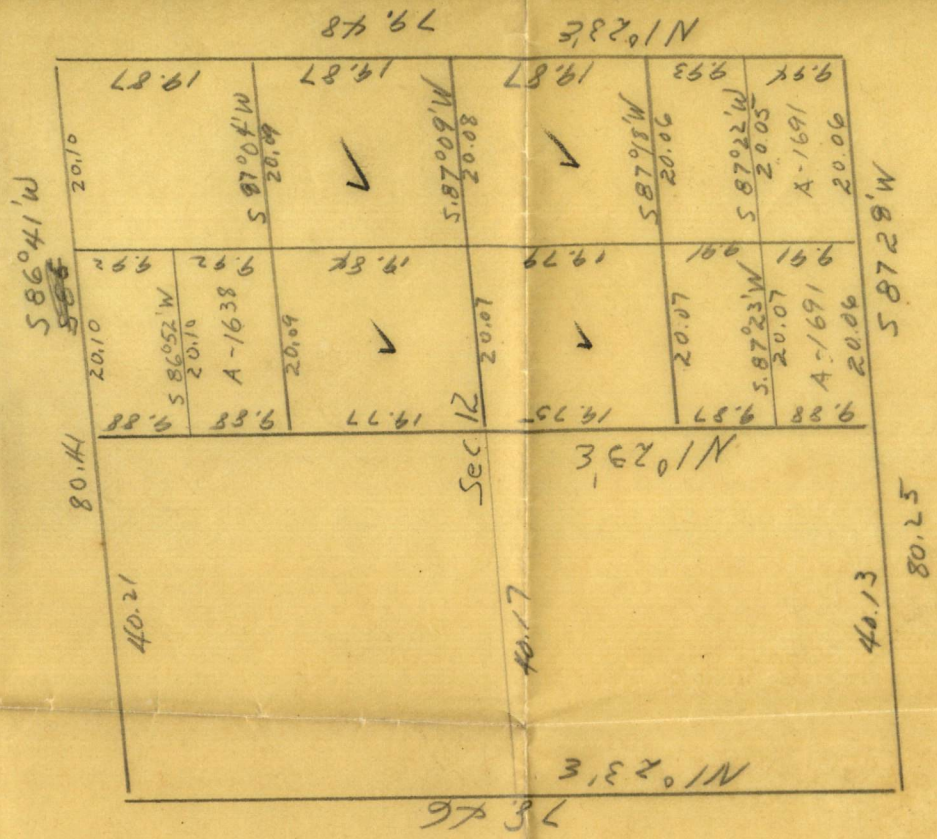
- 1/2 35/36 3" x 48" Cedar Post (Set by J. A. Gjelhaug 5/10/38)  
 B.T. 7" W. Pine N 19° 40' W 50 lks.  
 1 R.B. 35/36 3" x 18" Cedar Post scribed J. R. B.  
 ←
- 1/4 35/36 N.E. 1/4 5.35  
 E 1/6 35/36 N.E. 1/4 5.35  
 26/25 35/36 E.C.C. 5.35 3" x 48" Black Spruce Post  
 B.T. 7" Black Spruce N 80° W 24 lks. (Set by J. A. Gjelhaug)  
 N 1/2 35/36 C.E. 1/6 5.35 3" x 48" Black Spruce Post  
 B.T. 5" Birch S 60° E 13 lks. (Set by J. A. Gjelhaug 5/13/38)  
 S.E. 1/4 5.35  
 5/6 35/36 C.S. 1/16 5.35  
 37/35 C.C.C. 5.35 4" x 48" Tanb. Post  
 B.T. 6" B. of Gil. S 37° W. 13 lks (Set by J. A. Gjelhaug 5/13/38)  
 W 1/6 5.35 W.C.C. 5.35  
 1/4 C.C. 5.35 C.W. 1/6 5.35  
 5.35 S.W. 1/6 5.35  
 55/36 C.C. 5.35 4" x 48" Aspen Post Form 258A on B.T.  
 B.T. 5" Aspen N 85° W 17 lks (Set by J. A. Gjelhaug 5/13/38)  
 M.C. 35/36 5.M.C. 5.35



Pages 36 thru End  
are Blank .

141-28  
Sec. 12  
G.L.O. Resurvey

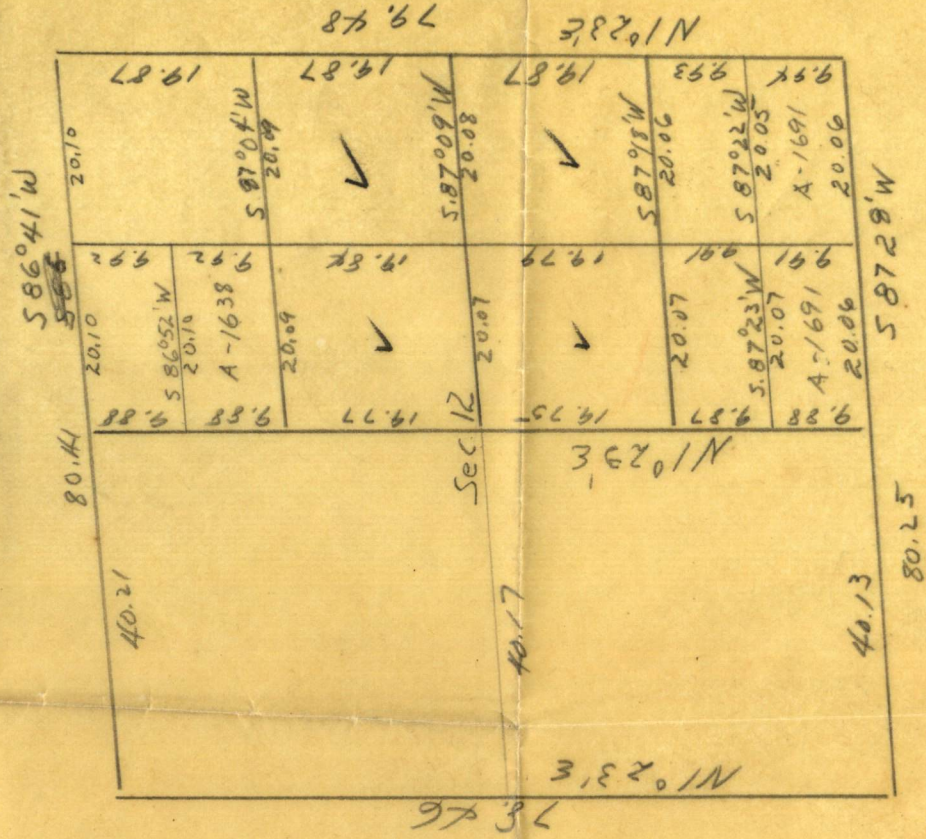
215' 25  
219'



✓ - plantation Forties for 1940  
H

141-28  
Sec. 12  
G.L.O Resurvey

215 85  
214



✓ - plantation Forties for 1940  
H