

OFFICE  
141-28

DILLIGEN  
- 45011

---

MINING  
TRANSIT BOOK  
No. 4221

---

ccc

2

# EUGENE DIETZGEN CO.

DRAWING MATERIALS, MATHEMATICAL and  
SURVEYING INSTRUMENTS

Chicago New York San Francisco New Orleans Pittsburg Toronto

Distances from Center of Roadway for Cross-Sectioning  
Roadway 16 feet wide. Side Slopes 1 on 1.  
For Single Track Embankment.

H	0	.1	.2	.3	.4	.5	.6	.7	.8	.9	H
0	8.0	8.1	8.2	8.3	8.4	8.5	8.6	8.7	8.8	8.9	0
1	9.0	9.1	9.2	9.3	9.4	9.5	9.6	9.7	9.8	9.9	1
2	10.0	10.1	10.2	10.3	10.4	10.5	10.6	10.7	10.8	10.9	2
3	11.0	11.1	11.2	11.3	11.4	11.5	11.6	11.7	11.8	11.9	3
4	12.0	12.1	12.2	12.3	12.4	12.5	12.6	12.7	12.8	12.9	4
5	13.0	13.1	13.2	13.3	13.4	13.5	13.6	13.7	13.8	13.9	5
6	14.0	14.1	14.2	14.3	14.4	14.5	14.6	14.7	14.8	14.9	6
7	15.0	15.1	15.2	15.3	15.4	15.5	15.6	15.7	15.8	15.9	7
8	16.0	16.1	16.2	16.3	16.4	16.5	16.6	16.7	16.8	16.9	8
9	17.0	17.1	17.2	17.3	17.4	17.5	17.6	17.7	17.8	17.9	9
10	18.0	18.1	18.2	18.3	18.4	18.5	18.6	18.7	18.8	18.9	10
11	19.0	19.1	19.2	19.3	19.4	19.5	19.6	19.7	19.8	19.9	11
12	20.0	20.1	20.2	20.3	20.4	20.5	20.6	20.7	20.8	20.9	12
13	21.0	21.1	21.2	21.3	21.4	21.5	21.6	21.7	21.8	21.9	13
14	22.0	22.1	22.2	22.3	22.4	22.5	22.6	22.7	22.8	22.9	14
15	23.0	23.1	23.2	23.3	23.4	23.5	23.6	23.7	23.8	23.9	15
16	24.0	24.1	24.2	24.3	24.4	24.5	24.6	24.7	24.8	24.9	16
17	25.0	25.1	25.2	25.3	25.4	25.5	25.6	25.7	25.8	25.9	17
18	26.0	26.1	26.2	26.3	26.4	26.5	26.6	26.7	26.8	26.9	18
19	27.0	27.1	27.2	27.3	27.4	27.5	27.6	27.7	27.8	27.9	19
20	28.0	28.1	28.2	28.3	28.4	28.5	28.6	28.7	28.8	28.9	20
21	29.0	29.1	29.2	29.3	29.4	29.5	29.6	29.7	29.8	29.9	21
22	30.0	30.1	30.2	30.3	30.4	30.5	30.6	30.7	30.8	30.9	22
23	31.0	31.1	31.2	31.3	31.4	31.5	31.6	31.7	31.8	31.9	23
24	32.0	32.1	32.2	32.3	32.4	32.5	32.6	32.7	32.8	32.9	24
25	33.0	33.1	33.2	33.3	33.4	33.5	33.6	33.7	33.8	33.9	25
26	34.0	34.1	34.2	34.3	34.4	34.5	34.6	34.7	34.8	34.9	26
27	35.0	35.1	35.2	35.3	35.4	35.5	35.6	35.7	35.8	35.9	27
28	36.0	36.1	36.2	36.3	36.4	36.5	36.6	36.7	36.8	36.9	28
29	37.0	37.1	37.2	37.3	37.4	37.5	37.6	37.7	37.8	37.9	29
30	38.0	38.1	38.2	38.3	38.4	38.5	38.6	38.7	38.8	38.9	30
31	39.0	39.1	39.2	39.3	39.4	39.5	39.6	39.7	39.8	39.9	31
32	40.0	40.1	40.2	40.3	40.4	40.5	40.6	40.7	40.8	40.9	32
33	41.0	41.1	41.2	41.3	41.4	41.5	41.6	41.7	41.8	41.9	33
34	42.0	42.1	42.2	42.3	42.4	42.5	42.6	42.7	42.8	42.9	34
35	43.0	43.1	43.2	43.3	43.4	43.5	43.6	43.7	43.8	43.9	35
36	44.0	44.1	44.2	44.3	44.4	44.5	44.6	44.7	44.8	44.9	36
37	45.0	45.1	45.2	45.3	45.4	45.5	45.6	45.7	45.8	45.9	37
38	46.0	46.1	46.2	46.3	46.4	46.5	46.6	46.7	46.8	46.9	38
39	47.0	47.1	47.2	47.3	47.4	47.5	47.6	47.7	47.8	47.9	39
40	48.0	48.1	48.2	48.3	48.4	48.5	48.6	48.7	48.8	48.9	40

**Example**—If point is 22.6 ft. above grade, how far should it be from center line to be a slope stake point? Ans. from Table 30.6. For same slopes but other widths of roadbed, correct above figures by one-half difference in width of roadbed; thus in example above, for 20 ft. roadbed distance will be  $30.6 + (20 - 16) \div 2$  or 2 ft. added to  $30.6 = 32.6$ . For slopes of 1 on 1½ see inside of back cover.

Copyright, 1914, by Eugene Dietzgen Co.

The paper stock of this book is made of a high grade 50% rag paper having a water resisting surface and is sewed with Bing Special Enamel Waterproof Thread.

Made in U. S. A.

141-28

Scanned

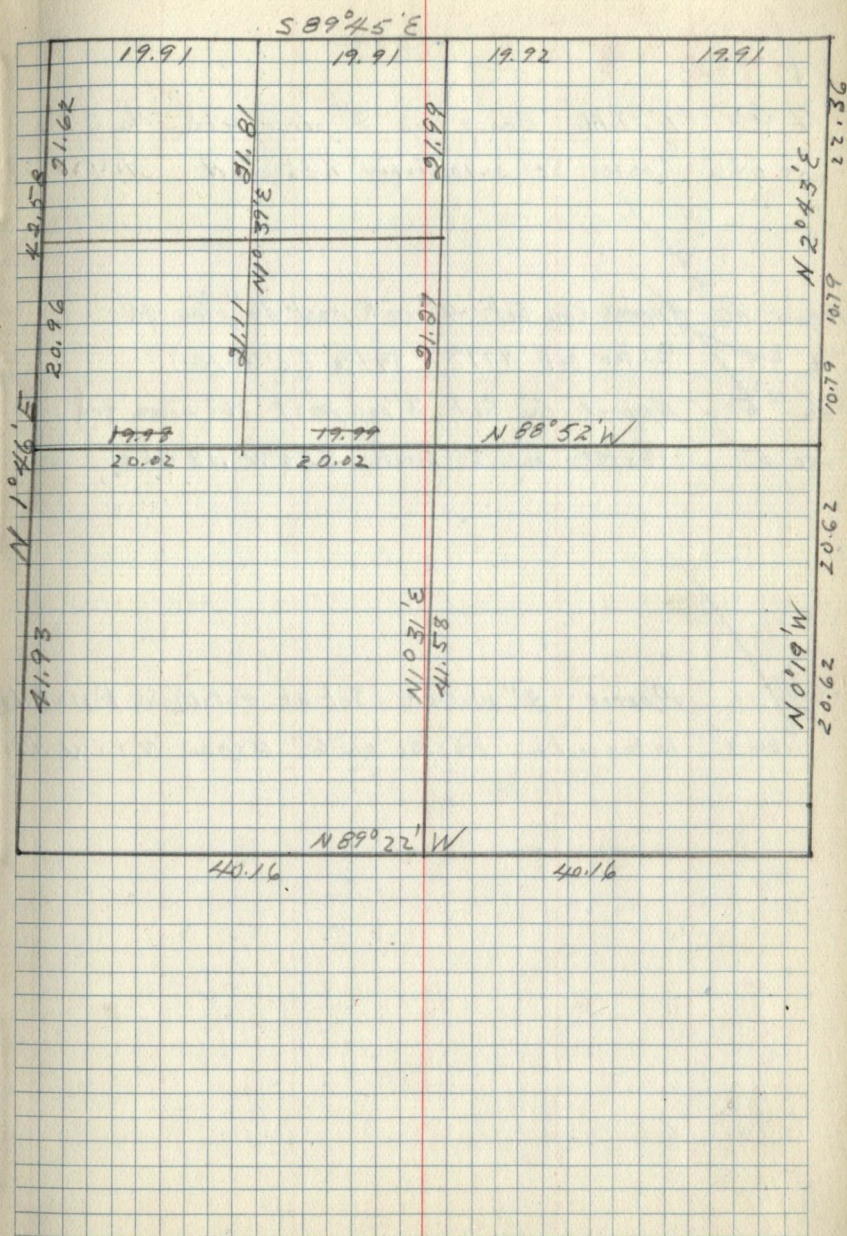
June 28, 2012

Pages 1 Thru 4  
are blank

✓  
#2 Witness cor set - 4" oak set 36" above ground.  
S. 5 .59 chs  $51^{\circ}39'W$  Cor. Post on 4" spruce  $N37^{\circ}W$  .53 ch.

✓  
#4 Cor. destroyed by road work. <sup>5/22/39</sup> Location given by  
Sec 5 & 4 at wood - Post set on Fence post .48 ch. W

✓  
#4 Cor. <sup>5/22/39</sup> 1" B.M. 8" Brass Cap - No B.T.s  
Sec 5 & 8 Post on 8" W. Oak .92 chs NW.



✓  
1/4 Cov 1" I.M. Brass Cap 8" above grid No B.T.'s  
Sec. 645 Poster set on 10" Aspen 1.85 chs N 5/22/39

✓  
Approx 1/6 ~~Approx~~ Cov Set 4" oak post 36" above gr  
#4 Poster set N77°E 59 lks (6" aspen)

✓  
1/6 #5 approx Cov Set 3" oak post 36" above grid  
Sec. 5 Poster on 6" birch S23°W .08 chs

✓  
Cov Approx - 3" W. Oak set at established point by  
Sec. 5 intersection Poster on 6" aspen N55°W .19 chs

RAIN R. 201  
16

1/16 #2 G.h. O. 1" I.M. & brass Cap 8" Above ground  
S. 6 B.T. 14" R. Oak S. 31° E. 2 1/2 kts

1/4 G.h. O. 1" I.M. & brass Cap 12" Above ground  
S. 6

1/16 #1  
S. 6

RAIN R. 201  
615

1/16 #7  
S. 6

1/4  
6 + 5

1/16 #14  
S. 6

RAIN R. 201  
615  
7/8

1/16 #15  
S. 6

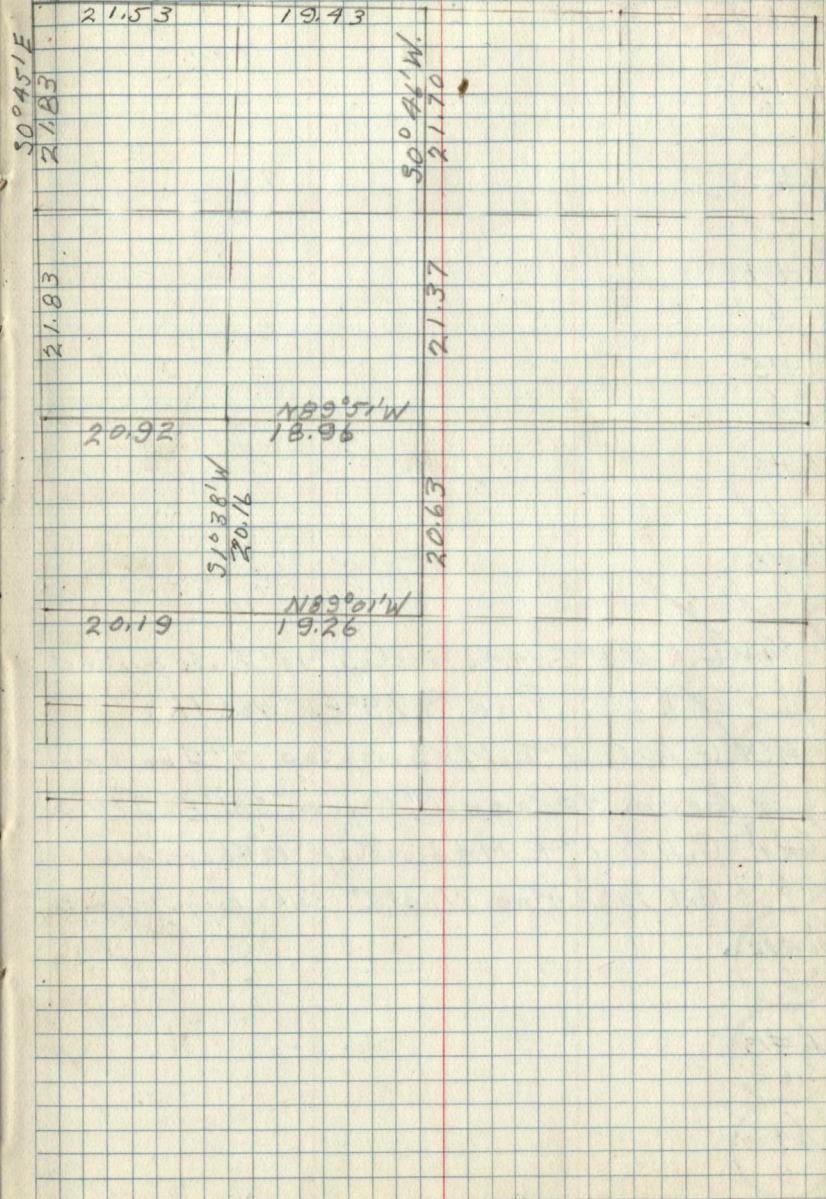
1/4  
6  
7

1/16 #16  
S. 6

RAIN R. 201  
16  
17

388° 55' E

Sec. 6-191-20



1/6 #10  
S. 6

1/4 15  
16

1/6 #3  
S. 6

1/6 #4  
S. 6

1/6 #5  
S. 6

1/6 #6  
S. 6

1/6 #8  
S. 6

C 1/4 ✓ G. L. O. 1" I. M. + brass Cap 10" Above ground  
S. 6 B. T. 6" R. Pine S. 79° E. 102 lbs.

1/6 #9 ✓ G. L. O. 1" I. M. + brass Cap 12" Above ground  
S. 6 Form 425 on 16" Aspen S. 31° E. 37 lbs.

1/6 #11 ✓ G. L. O. 1" I. M. + brass Cap 12" Above ground  
S. 6 B. T. 10" R. Pine N 60° E 30 lbs. Form 458 on B. T.

1/6 #12  
S. 6

1/6 #13  
S. 6

1/6 4  
S. 6

1/6 9  
S. 6

Pages 7 Thru 10  
are blank





$\frac{1}{6}A$   
3.11

C.N.  $\frac{1}{6}$   
3.11

NE  $\frac{1}{6}$   
3.11

C.E.  $\frac{1}{6}$   
3.11

C.  $\frac{1}{4}$   
3.11

$\frac{1}{6}A$   
3.11

C.W.  $\frac{1}{6}$   
3.11

S.W.  $\frac{1}{6}$

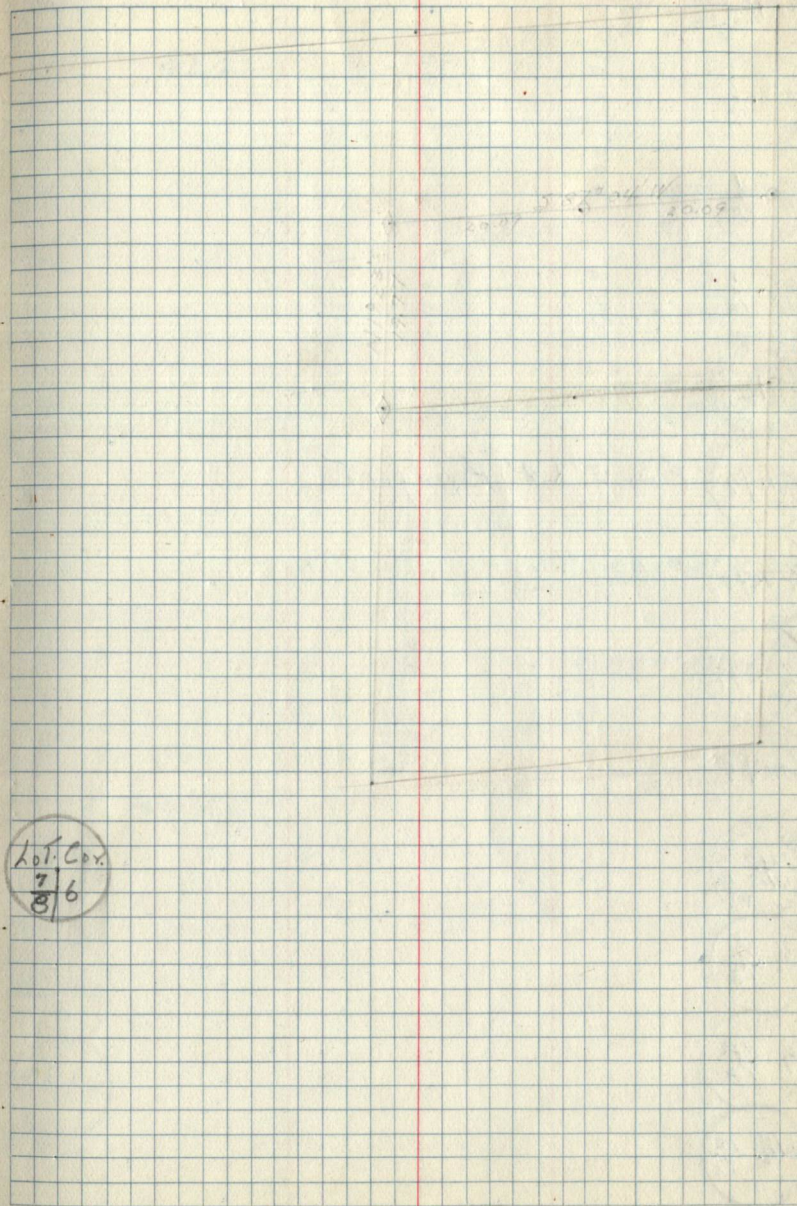
Lot Cov.  
 $\frac{215}{87}$

Lot Cov.  
 $\frac{213}{96}$

Lot Cov.  
 $\frac{312}{61}$

Lot Cov.  
 $\frac{612}{17}$

Lot Cov.  
518



Lot Cov.  
 $\frac{76}{86}$

N 1/4 12/12  
21  
11/12

W 1/2 1/12

1/4 1/12

E 1/2 1/12

N 1/2 12/17  
12/17

N 1/2 12/17 F.S. 3" X 4' Aspen post

1/4 12/17

3/8 12/17

1/4 12/17

N 1/2 12/17  
12/17

E 1/2 12/13

1/4 12/13

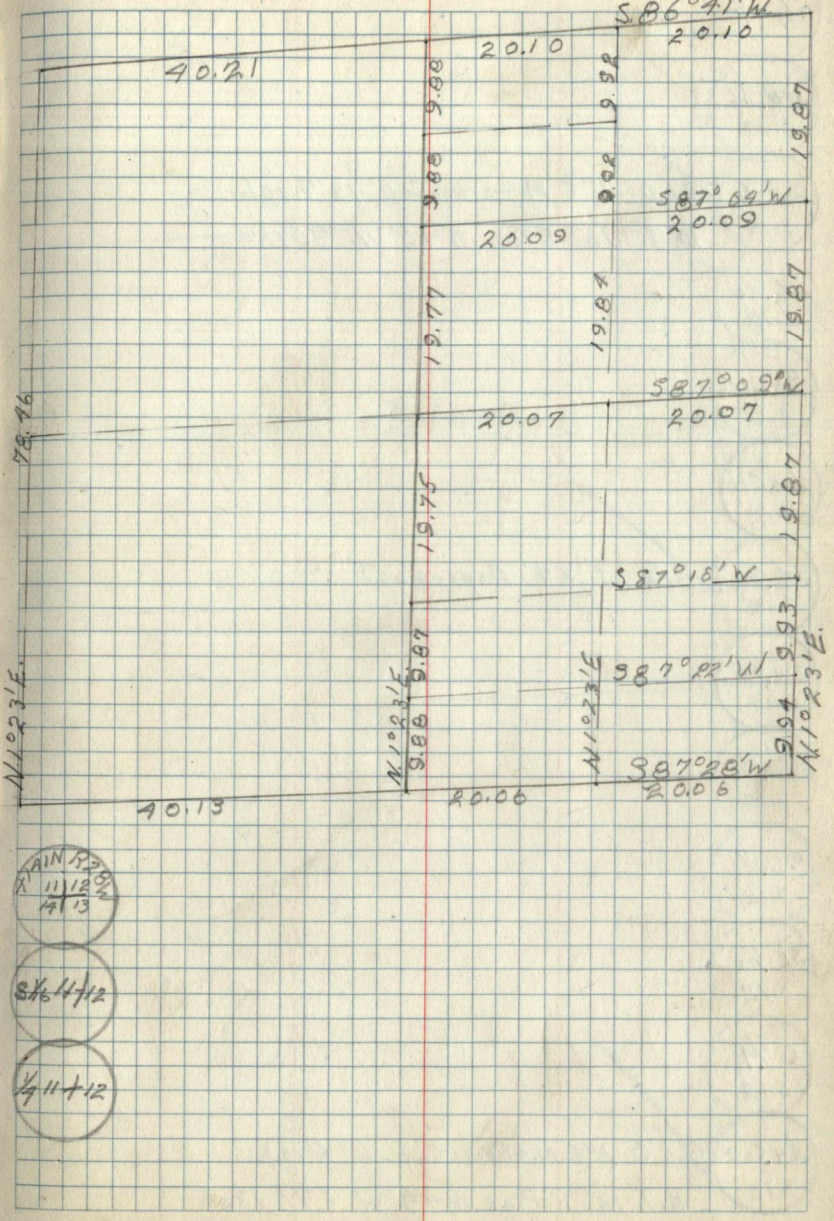
W 1/2 12/13

N 1/2 3/12

N 1/2 12/13  
11/12  
4/13

E 1/2 4/12

1/4 11/12



N 1/4 1/2 S. 12

NW 1/4 S. 12

C.N 1/4 ✓ G.h.O. 1" I.M. + brass Cap 12" High  
S. 12 B.T. 10" Elm S 46° W. 90/ks.

NE 1/4 S. 12

1/4 Cor. S. 12

1/4 Cor. S. 12

PE 1/4 ✓ S. 3" x 4' Aspen post  
S. 12

CW 1/4 S. 12

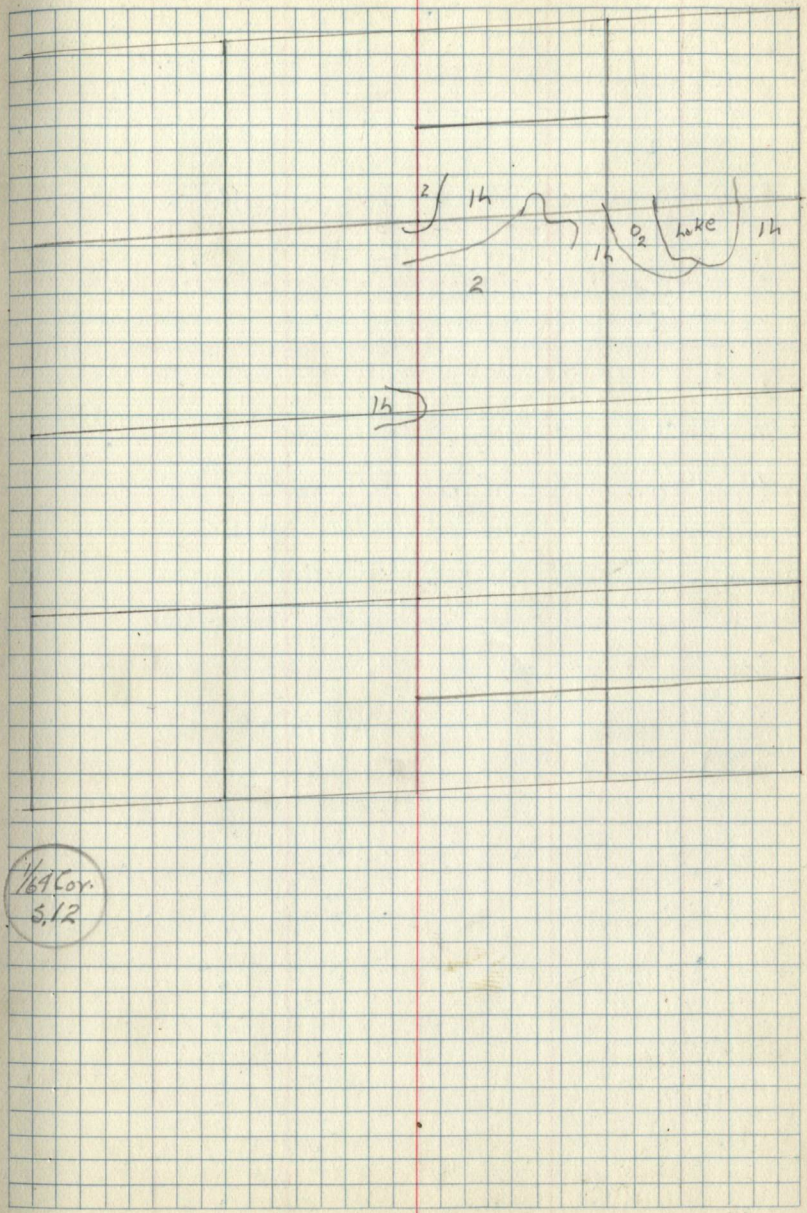
SW 1/4 S. 12

CS 1/4 S. 12

SE 1/4 S. 12

C 1/4 S. 12

1/4 Cor. ✓ G.h.O. 1" I.M. + brass Cap. 6" High  
S. 12 B.T. 12" R Pine N 49° W. 19/ks



1/4 Cor. S. 12

Pages 13 Thru 27  
are blank

1/4 N 1/2  
29/28  
32/33

G.L.O. In M. las Tin road B.T. 8" R. Pine N.33°E 991ks.

10" R. Pine N 63 1/2° W 991ks. Form 458 on each B.T.

5/8  
29/28

See Sec. 29

5/16  
29/28

See Sec. 29

1/4  
29/28

See Sec. 29

N 1/8  
29/28

See Sec. 29

1/4 N 1/2  
20/21  
29/28

E 1/2  
1/6 28

1/4 1/2  
28

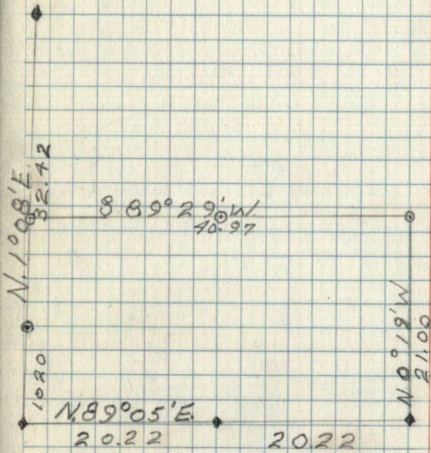
W 1/2  
1/6 28

1/4 N 1/2  
21/22  
28/27

N 1/8  
28/27

1/4  
28/27

5 1/8  
28/27



N 1/4 R 28  
28 127  
33 134

E 1/2 B  
1/6 39

1/4 R 28  
33

F.S. 2" Aspen Post 7' high set from C.H.D. B.T.'s.  
Form 958  
10" R. Pine 55°E 56 lks. 8" Aspen St. N 70°E 8 lks. one each B.T.

W 1/2 B  
1/6 33

County 2" Iron pipe 10" high B.T. 600k 51°E 66 lks.  
Form 958 on B.T. Pipe in S. direction Hack. - Long. Road.

1/6 #7  
5.28

1/6 #7  
5.28

1/6 #6  
5.28

1/6 #8  
5.28

C 1/4  
5.28

1/6 #9  
5.28

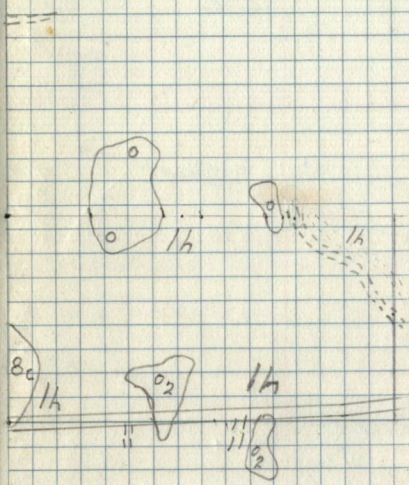
1/6 #11  
5.28

F.S. 2" Aspen Post 7' high

1/6 #12  
5.28

~~F.S. 2" Aspen Post 7' high~~  
~~Form 958 on 3" Aspen 58' w 6 lks~~

1/6 #13  
5.28







C.C. ✓  
29 28

3" Oak Post 5' high B.T. 8" R. Pine N79°W. 127 ch.  
(Set on Res. line by J. A. Gjelhaug)

AIN 1/2 29  
29 28  
5.2 33

G.L.O. Pipe lot in road. B.T.'s 10" R. Pine N63 1/2 W 99 1/2  
8" R. Pine N33°E. 94 1/2 k.s. Form 458 on both B.T.

E 1/2 29  
1/5 32

1/4 29  
32

W 1/2 29  
1/5 32

1/6 #4  
5.29

1/6 #5  
5.29

1/6 #6  
5.29

1/6 #8  
5.29

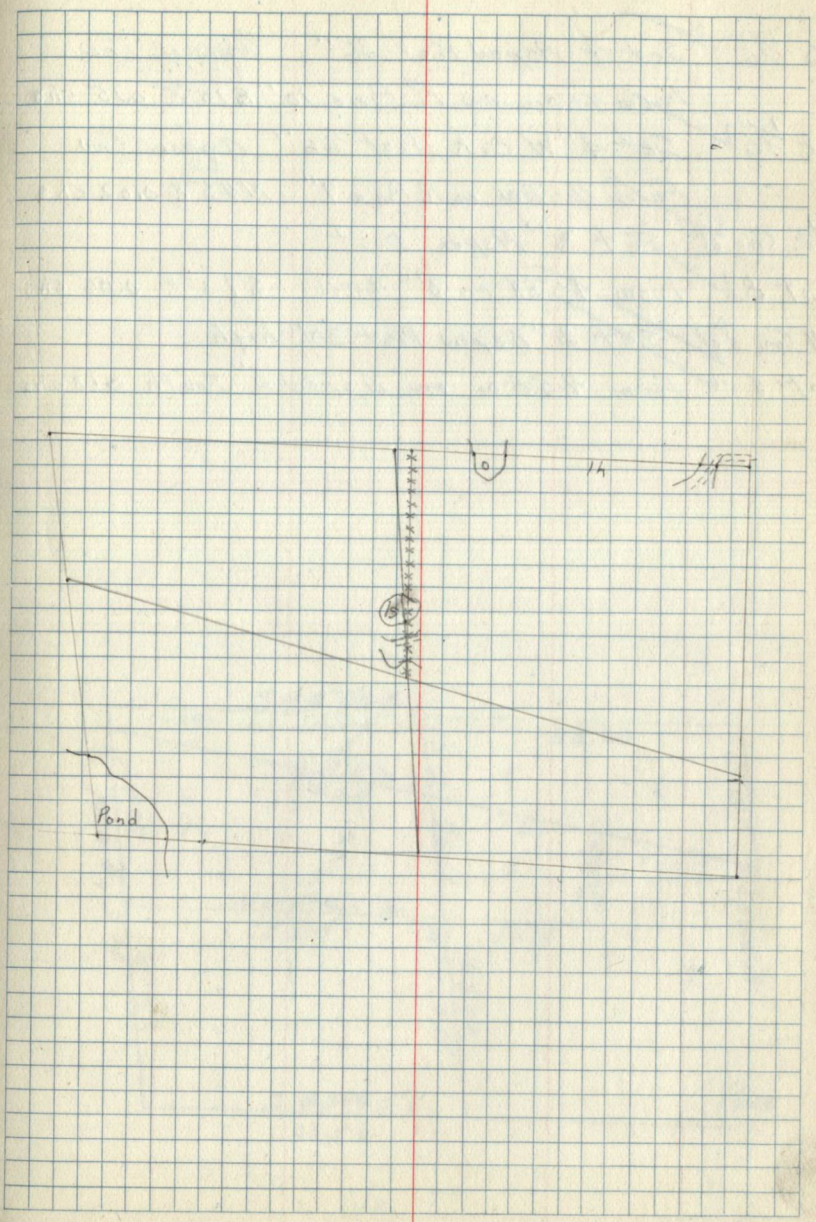
C 1/4 ✓  
5.29

G.L.O. 1" I. M. + brass Cap. 8" high  
Form 458 on 2" Pin Oak N6°W. 10 1/2 k.s.

1/6 #9  
5.29

1/6 #11  
5.29

1/6 #12  
5.29

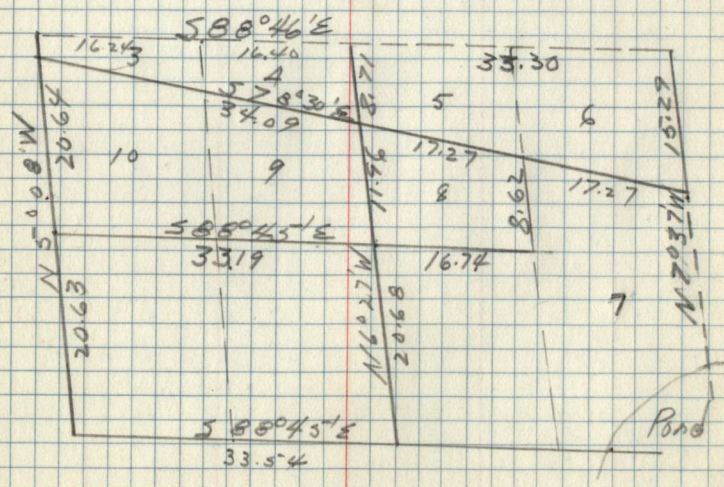


CS 1/6 ✓ Set 4" Aspen Post 36" Appnd. Cav.  
 Form 458a on P. Pine 10" S75°E 0.15 chs

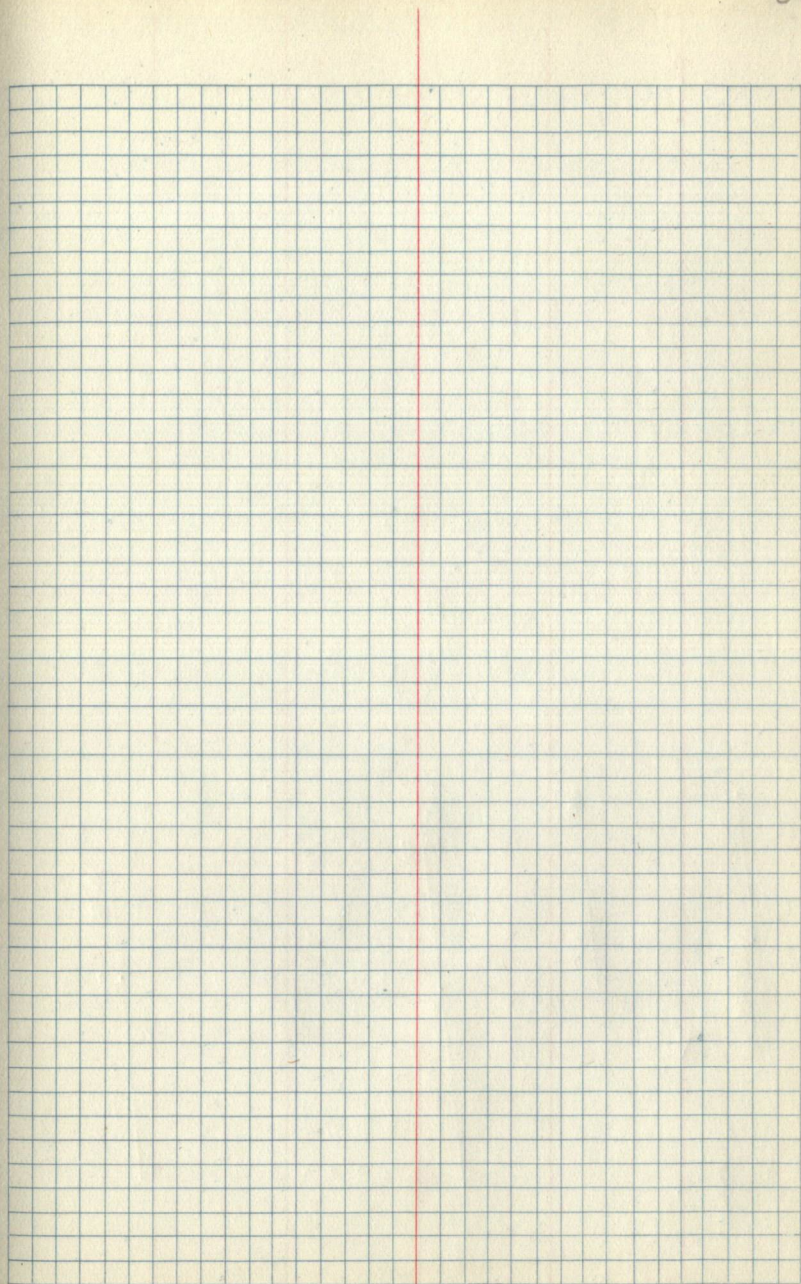
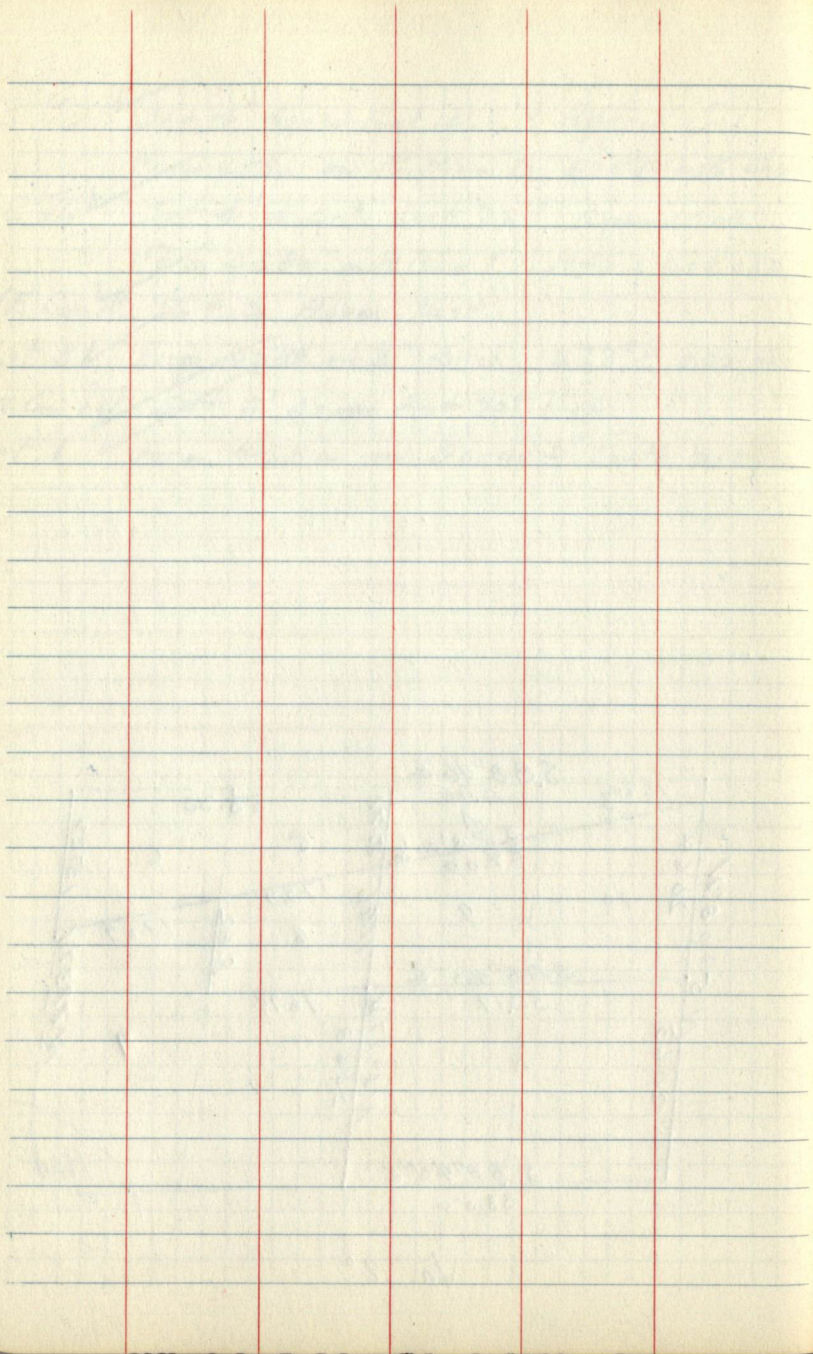
SE 1/4 ✓ Set 4" W Oak Post 36" Appnd. Cav.  
 Form 458a on P. Pine 7" N45°E 0.02 chs

NE Cor of Set 3" Aspen post  
 Lot 8 ✓ Form 458a on 3" Birch S73°E 0.06 chs

NW Cor of Set 3" Aspen Post 30" high  
 Lot 8 ✓ Form 458a on Aspen 3" South 0.18 chs



Va. 7°



Pages 31 Thru 33  
are blank

1/6 #10  
5.34

1/6 #9  
33.34

1/6 #3  
5.34

1/6 #7  
5.34

1/6 #5  
5.34

1/6 #6  
5.34

1/6 #8 County Cor. 8" square stone flush with ground.  
3.34 + Marked in top of stone.

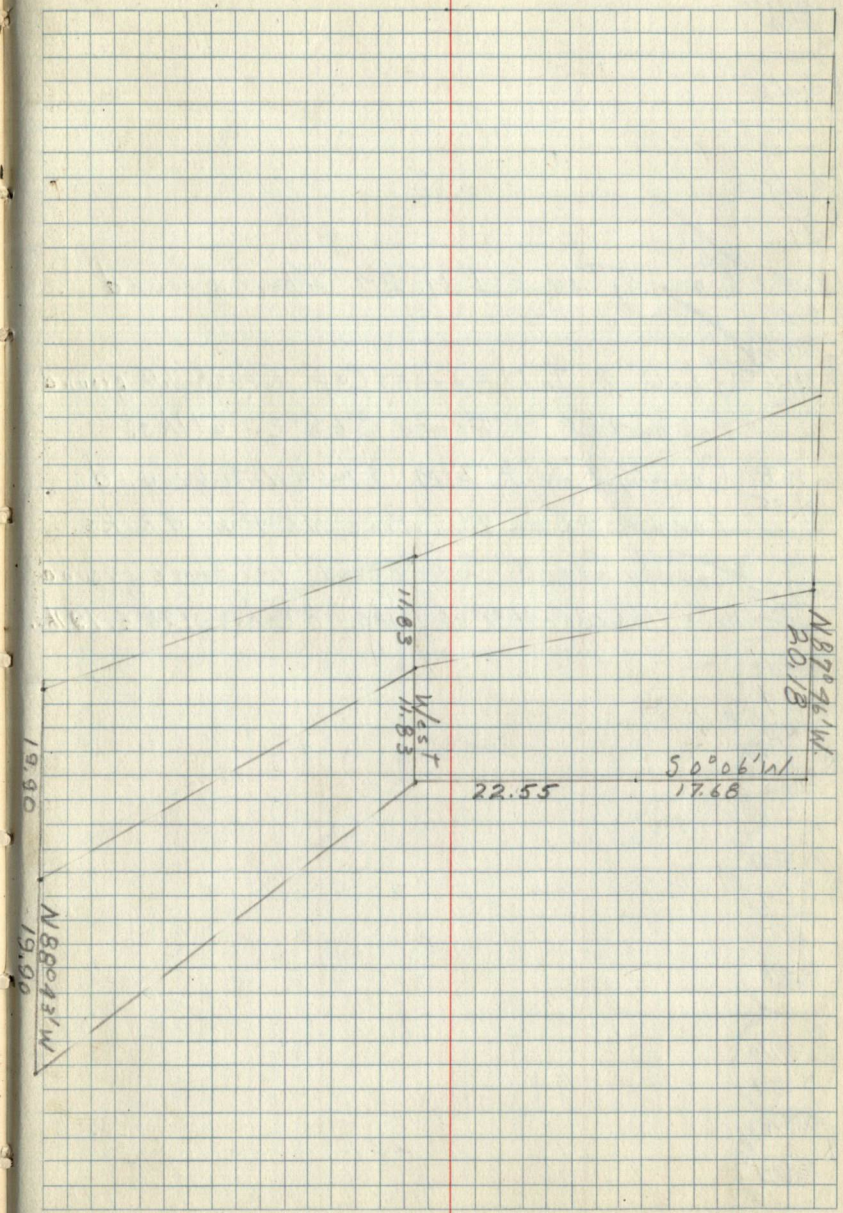
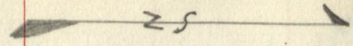
C. 1A  
5.34

1/6 #9  
5.34

1/6 #11  
5.34

1/6 #12  
5.34

1/6 #13  
5.34



AIN 2324  
38127  
33134

1/6 #2  
5.6

1/4 W.C.  
27  
39

1/6 #1 County Cor. 2" I.M. 21" Above ground  
5.6

AIN 2324  
37126  
34135  
G.L.O. 2" I.M. + brass Cap Flush with ground  
Farm 458 3" Aspen S. 68° E. 611ks.

I.R.B. County Cor. 2" I.M. Flush with ground  
39/35  
Farm 458a on 7" W. Pine N. 59° W. 981ks.

1/4 County Cor. 3" Cedar post 18" Above ground  
39/35  
B.T's. 6" Cedar N. 31° W. 121ks. 8" Cedar N. 26° E. 191ks.

1/6 #14  
5.34

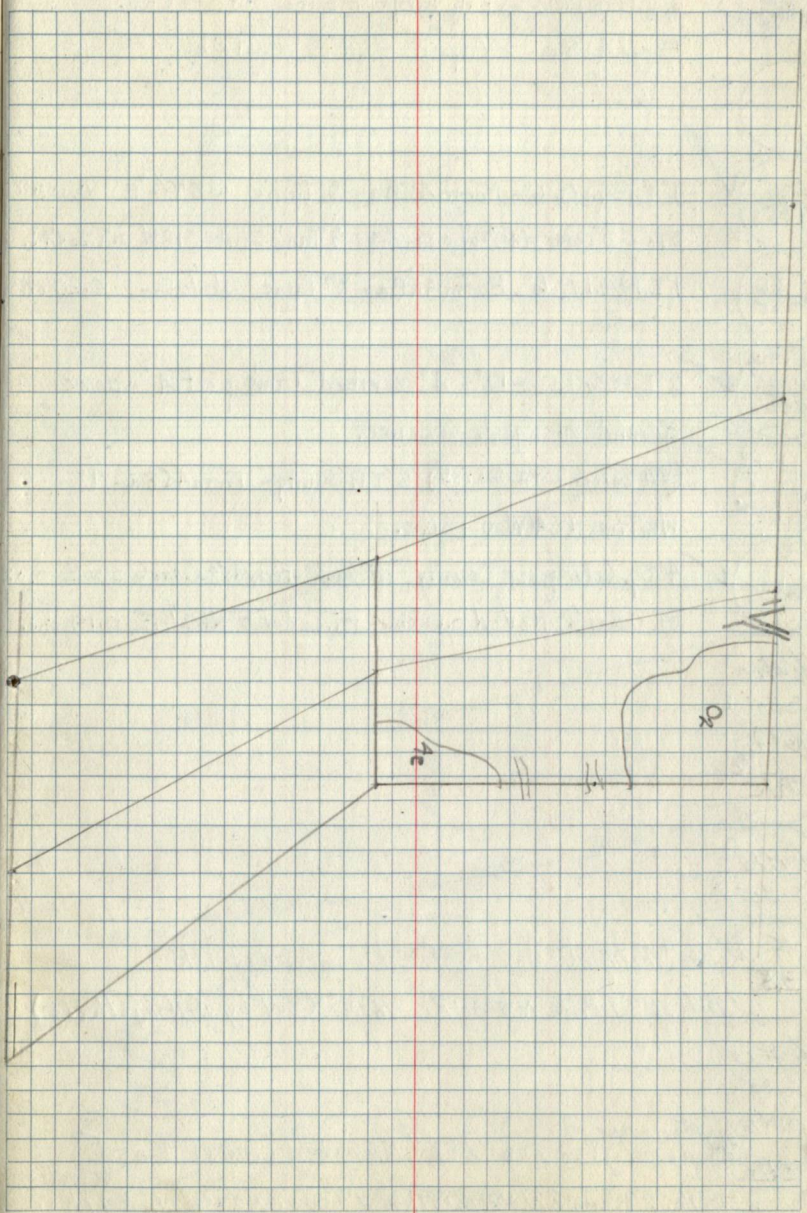
AIN 2324  
39/35

1/6 #15  
5.34

1/4  
5.34

1/6 #16  
5.34

AIN 2324  
33/34





C.C.  
35/36

3" x 18" Cedar Post scribed I.R.B.

1/6#7  
5.35M.C.  
35/3635/36  
M.C.1/6#6  
5.35

E.C.C. 3" x 98" Black spruce Post

5.35

B.T. 4" Black Spruce N. 80° W. 291 ks. (set by J.A. Gjelhaug)

C.C. 4" x 98" Tamarack Post (set by J.A. Gjelhaug)

5.35

B.T. 6" Balsam of Gilead S. 39° W. 131 ks.

W.C.C.  
5.351/6#9  
5.35

C.C. 4" x 98" Aspen Post Form 458a on B.T.

5.35

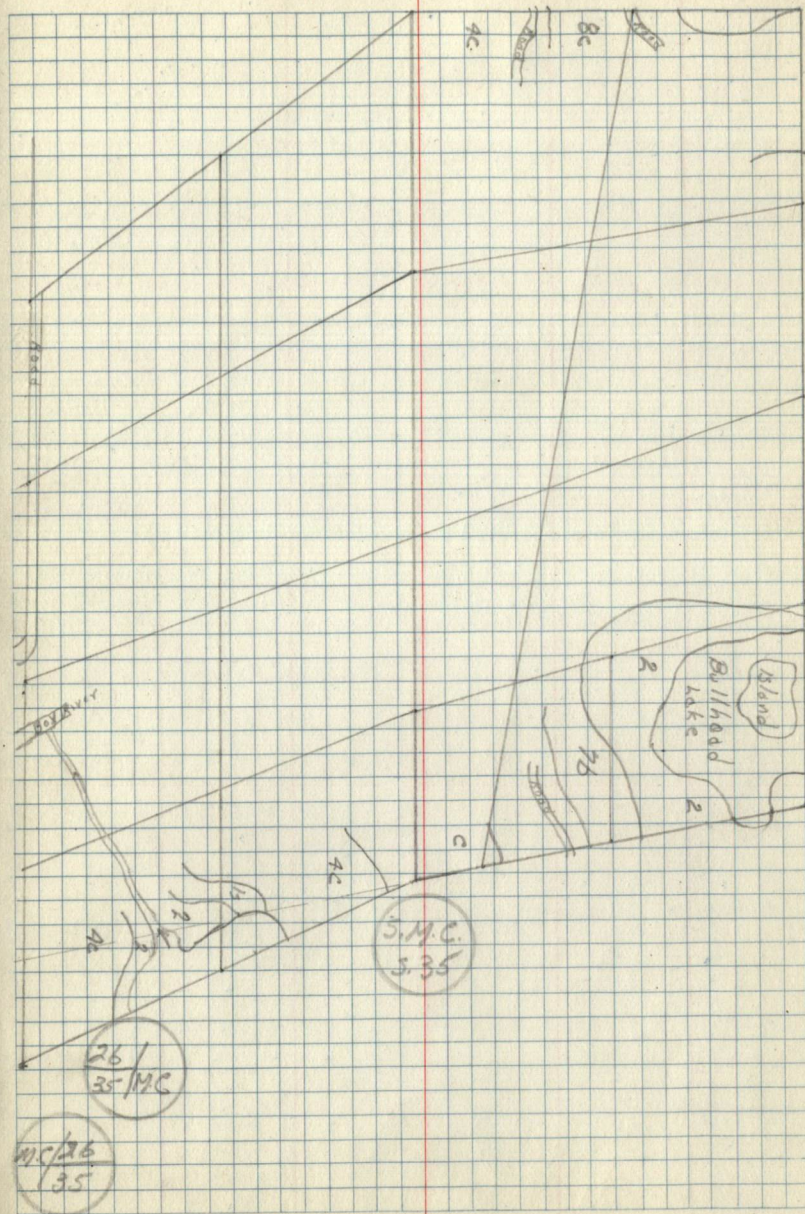
B.T. 5" Aspen N. 85° W. 171 ks. (set by J.A. Gjelhaug)

1/6#10  
5.35

3" x 98" Black Spruce Post (set by J.A. Gjelhaug)

5.35

B.T. 5" Birch S. 60° E. 131 ks.

1/6#11  
5.351/6#12  
5.351/6#13  
5.35



Pages 36 Thru End  
are blank