

U. S. Department of Agriculture

FOREST SERVICE

Chippewa NATIONAL FOREST

CORNERS OF THE PUBLIC SURVEY

T. 150 R. 28 5 Mer.

Sec. 7, 8, 17, and 18 Corner common to Sections

Corner consists of a - (not) in place

State condition -

Dimensions above ground - inches

Sketch grooves, letters, figures, or notches, on proper face or edge.

CARDINAL POSITION

DIAGONAL POSITION

Diagram for Cardinal Position with four vertical columns.

N W S E

Diagram for Diagonal Position with four vertical columns.

NW SW SE NE

Mound of - is located -

Pits are located -

Sketch markings of Bearing Trees (or Rocks) in proper box and fill blanks below, giving bearings from Corner to Trees and Distances in Links.

T150 R28W S-7.

Empty box for sketch markings.

illegible

Empty box for sketch markings.

B.T

Empty box for sketch markings.

B.T

Empty box for sketch markings.

Species Balsam Balsam.

Diameter 8" 9"

Bearing N.W. S.E.

Distance -

Do you believe this to be a genuine Land Office Corner? -

If not, why? -

Karl Kobes

(Signature)

12-21-33

(Date)

Estimator

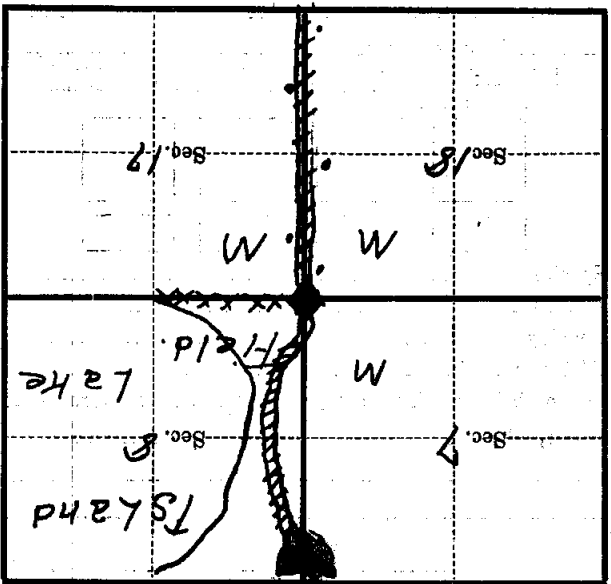
(Title)

Corner again.
B. L. B. Road.
Spruce Lilliepic
And some from Highway.

Give any further facts which will aid in finding this chains distant.

Metal Location Poster is on a tree inches diameter, on the side of from which this Corner bears

ASTER
8" hand.



(Make sketch of topography near Corner)

T. 156 R. 28 S. Mer.