

U. S. Department of Agriculture

FOREST SERVICE

Postal

X-1

NATIONAL FOREST

CORNERS OF THE PUBLIC SURVEY

T. 150 R. 28-29 S. Mer.

1/4 Corner common to Sections
36, and 31

Corner consists of a _____ (not) in place
State condition _____

Dimensions above ground _____ inches

Sketch grooves, letters, figures, or notches, on proper face or edge.

CARDINAL POSITION

DIAGONAL POSITION

--	--	--	--

--	--	--	--

N W S E

NW SW SE NE

Mound of _____ is located _____

Pits are located _____

Sketch markings of Bearing Trees (or Rocks) in proper box and fill blanks below, giving bearings from Corner to Trees and Distances in Links.

150-28
1/4 cor

--

--

--

3.7'

--

--

--

Species Basswood stub

Diameter 10 in.

Bearing _____

Distance _____

Do you believe this to be a genuine Land Office Corner? Yes

If not, why? _____

Karls & Grillet

(Signature)

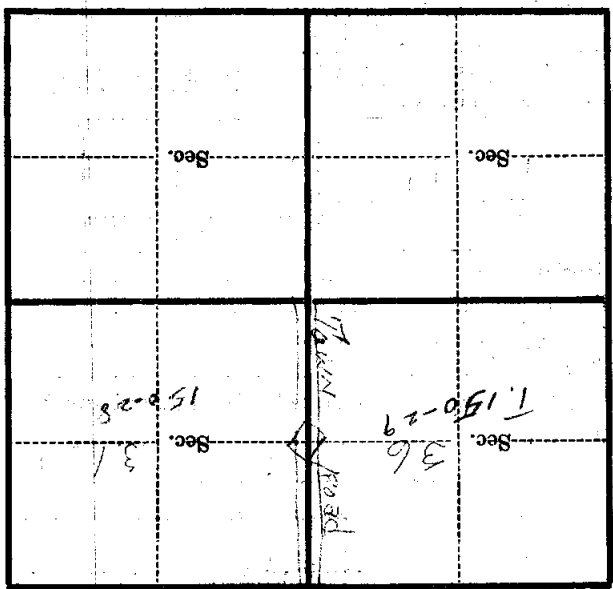
10-30-34
(Date)

Field Asst.
(Title)

X-1

Corner again.
Old bearing Tree stands
on left hand side of road
coming south from sec. 36
25-30-31

Metal Location Poster is on a
tree _____ inches diameter, on the
side of _____
from which this Corner bears _____
chains distant.



(Make sketch of topography near Corner)