

U. S. Department of Agriculture

FOREST SERVICE

V19
posted

Chippewa NATIONAL FOREST

CORNERS OF THE PUBLIC SURVEY

T. 150 R. 27 5 P Mer.

1/4 Corner common to Sections
26, and 35

Corner consists of a _____ (not) in place
State condition _____

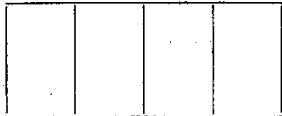
Dimensions above ground _____ inches
Sketch grooves, letters, figures, or notches, on proper face or edge.

CARDINAL POSITION

DIAGONAL POSITION



N W S E



NW SW SE NE

Mound of _____ is located _____

Pits are located _____

Sketch markings of Bearing Trees (or Rocks) in proper box and fill blanks below, giving bearings from Corner to Trees and Distances in Links.



Species Bitch Spruce

Diameter 6" 10"

Bearing S50°W N3/4

Distance 56.9ft. 52.3ft.

Do you believe this to be a genuine Land Office Corner? Yes

If not, why? _____

Floyd W. Johnson
(Signature)

JAN 10 1924
(Date)

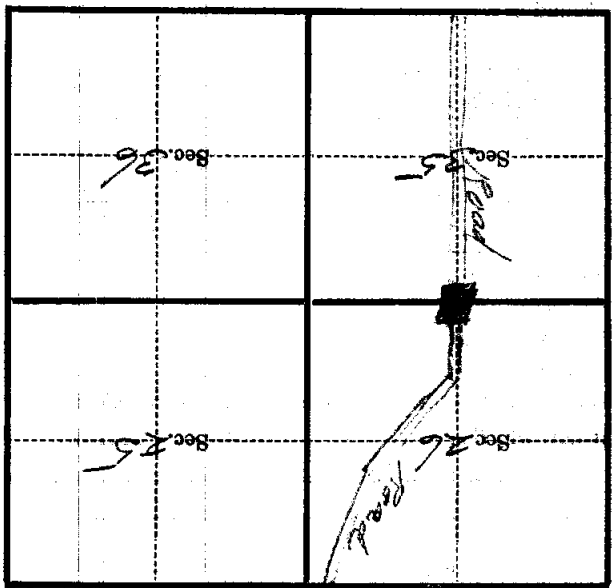
Surveyor
(Title)

V-19

Corner again.
Cont. Road Line
West from this cor.
Dist. can be located
from County Road
Notes

Give any further facts which will aid in finding this
chains distant.

from which this Corner bears
side of
tree 5 inches diameter, on the West
Metal Location Poster is on a Balsam
CORNEN and Road
N 70° E



(Make sketch of topography near Corner)