

Form 874-0—Revised May, 1918
U. S. Department of Agriculture
FOREST SERVICE

N 25
P

CHIPPENAW NATIONAL FOREST

CORNERS OF THE PUBLIC SURVEY

T. 150N. R. 325E26 S. 14P. Mer.

SECTION Corner common to Sections

18 19 24 and 18
20 26
Corner consists of a WOODEN STAKE in place
State condition GOOD

Dimensions above ground 313736 inches

Sketch grooves, letters, figures, or notches, on proper face or edge.

CARDINAL POSITION

DIAGONAL POSITION

| | | | |
|---|---|---|---|
| | | | |
| N | W | S | E |

| | | | |
|----|----|----|----|
| | | | |
| S | S | S | S |
| 13 | 24 | 19 | 18 |
| SW | SW | SE | NE |

Mound of _____ is located _____

Pits are located _____

Sketch markings of Bearing Trees (or Rocks) in proper box and fill blanks below, giving bearings from Corner to Trees and Distances in Links.

| | | | |
|---------|---------|---------|---------|
| S 18 | S 19 | S 13 | S 13 |
| BT | BT | BT | |

Species TAMARAC SPRUCE TAMARAC

Diameter 8 IN. 10 IN. 5 IN.

Bearing N 19° E S 22° E N 25° W

Distance .74 CHS. .117 CHS. .97 CHS.

Do you believe this to be a genuine Land Office Corner? _____

If not, why? RESURVEY BY COUNTY

ENGINEER

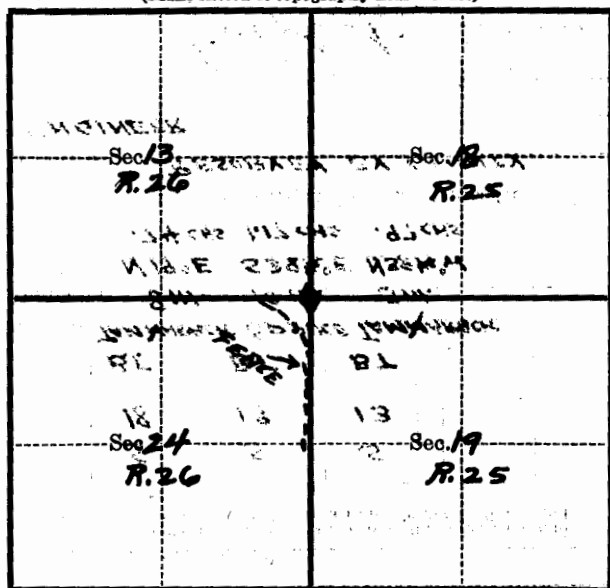
Ralph R. Johnson
(Signature)

JULY 17, 1925 FOREMAN, C.R.M., CU-7

1925 (Date) 5:16 P.M. (Time)

T. 150 N. R. 25 E 26 W. 5th P. Mer.

(Make sketch of topography near Corner)



Metal Location Poster is on a TAMMARA
 tree 8 inches diameter, on the S.W.
 side of TREE
 from which this Corner bears S. 19° W.
.74 chains distant.

Give any further facts which will aid in finding this
 Corner again. 2000

CORNER LOCATED IN SWAMP.
FRICE S.W. OF CORNER