

U. S. Department of Agriculture

FOREST SERVICE

Chippewa NATIONAL FOREST

CORNERS OF THE PUBLIC SURVEY

T. 149 R. 28 5 Mer.

Section Corner common to Sections
3, 2, 35, and 34

Corner consists of a None (not) in place

State condition _____

Dimensions above ground _____ inches

Sketch grooves, letters, figures, or notches, on proper face or edge.

CARDINAL POSITION

DIAGONAL POSITION

--	--	--	--

N W S E

--	--	--	--	--

NW SW SE NE

Mound of _____ is located _____

Pits are located _____

Sketch markings of Bearing Trees (or Rocks) in proper box and fill blanks below, giving bearings from Corner to Trees and Distances in Links.

T-149
R-28
S-2

T149
R28
J-2

--

--

B.T

B.T.

--

--

Species BASSWOOD ELM.

Diameter 12" 8"

Bearing S38°E. S33°E.

Distance 24 LKS. 56 LINKS.

Do you believe this to be a genuine Land Office Corner? yes.

If not, why? _____

Harrison Adams.

(Signature)

1-2-35

(Date)

act. Leader. C.C.C.

(Title)

2-17

Corner again.

Give any further facts which will aid in finding this

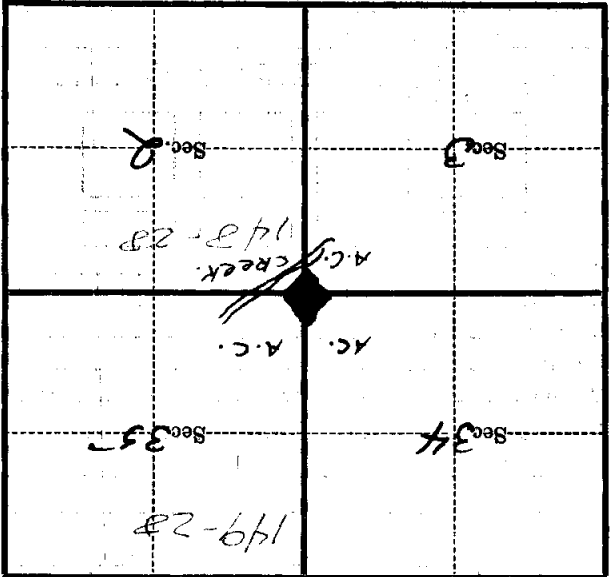
chains distant.

from which this Corner bears

side of

tree inches diameter, on the

Metal Location Poster is on a *None*



(Make sketch of topography near Corner)

Mer.

T. 149 R. 28 S

Form 874-9—Revised May, 1918
U. S. Department of Agriculture
FOREST SERVICE

Chippewa ACQ. NATIONAL FOREST

Posted
CORNERS OF THE PUBLIC SURVEY

T. 149 N. R. 28 W. 5th Mer.
Section Corner common to Sections
34, 35, 3, and 2.

Corner consists of a *Name* (not) in place
State condition

Dimensions above ground _____ inches
Sketch grooves, letters, figures, or notches, on proper face or edge.
CARDINAL POSITION DIAGONAL POSITION

N	W	S	E

NW	SW	SE	NE

Mound of _____ is located _____

Pits are located _____

Sketch markings of Bearing Trees (or Rocks) in proper box and fill blanks below, giving bearings from Corner to Trees and Distances in Links.

T-149
R-28
S-2

T-149
R-28
S-2

--

--

B. T.

B. T.

--

--

Species Basswood Elm

Diameter 12" 8"

Bearing S30°E S 33°E

Distance 24 li. 56 links

Do you believe this to be a genuine Land Office Corner? **Yes**

If not, why? _____

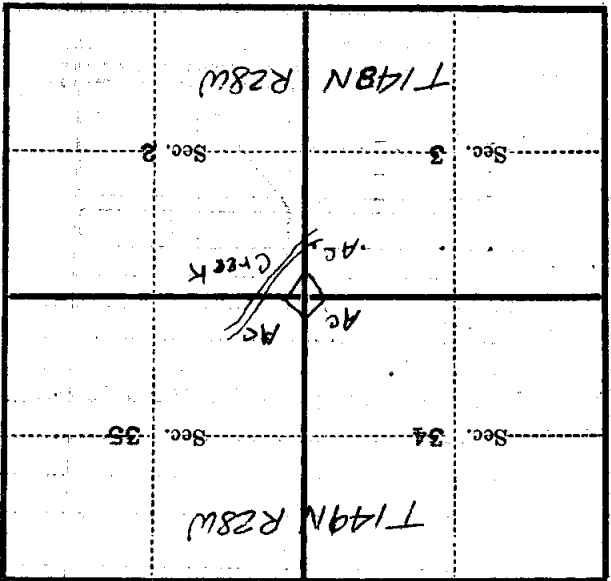
Harrison Adams
(Signature)

1/2/35
(Date)

Ast. Leader, CCC
(Title)

Corner again.

Give any further facts which will aid in finding this
 chains distant.
 from which this Corner bears
 side of
 tree inches diameter, on the
 Metal Location Poster is on a None



(Make sketch of topography near Corner)

T. 149 N. R. 28 W. 5th Mer.

Form 874-9—Revised May, 1918
 U. S. Department of Agriculture
 FOREST SERVICE

NATIONAL FOREST

CORNERS OF THE PUBLIC SURVEY

T. 149 N., R. 14 W. Mer. 5th

SECTION Corner common to Sections
34, 35, 3, and 2

Corner consists of a _____ (not) in-place

State condition None

Dimensions above ground _____ inches

Sketch grooves, letters, figures, or notches, on proper face or edge.

CARDINAL POSITION

DIAGONAL POSITION

--	--	--	--

N W S E

--	--	--	--

NW SW SE NE

Mound of _____ is located _____

Pits are located _____

Sketch markings of Bearing Trees (or Rocks) in proper box and fill blanks below, giving bearings from Corner to Trees and Distances in Links.

T149 R24 32

T149 R24 52

--

--

B.T.

B.T.

--

--

Species BASSWOOD FLA.

Diameter 12 1/2 8 1/2

Bearing S30E S83E

Distance 24 LINKS 56 LINKS

Do you believe this to be a genuine Land Office Corner? Yes

If not, why? _____

Thomas Adams
 (Signature)

1/2/25
 (Date)

(Title)

2-17

