

U. S. Department of Agriculture

FOREST SERVICE

E 21 X

Chippewa NATIONAL FOREST

CORNERS OF THE PUBLIC SURVEY.

T. 149 N. R. 26 W. S<sup>74</sup> Mer.

Section Corner common to Sections

1, 2, 11, and 12

Corner consists of a *Tan Post* (not) in place

State condition *Good*

Dimensions above ground *48* inches

Sketch grooves, letters, figures, or notches, on proper face or edge.

CARDINAL POSITION

DIAGONAL POSITION

N	W	S	E

NW	SW	SE	NE

Mound of \_\_\_\_\_ is located \_\_\_\_\_

Pits are located \_\_\_\_\_

Sketch markings of Bearing Trees (or Rocks) in proper box and fill blanks below, giving bearings from Corner to Trees and Distances in Links.

		<i>Poster</i>	
<i>0.19</i>	<i>BTs</i>		
<i>B.T.</i>			

Species *Tan Stp* *Tan Stp* *Spruce*

Diameter *8"* *6"* *7"*

Bearing *S64°15'W* *N41°W* *S63°30'W*

*LK's* Distance *80* *60* *62*

Do you believe this to be a genuine Land Office Corner? *yes*

If not, why? \_\_\_\_\_

*J. A. Gjelhaug*

(Signature)

*9/20/35*

(Date)

*Jr. Civil Engr*

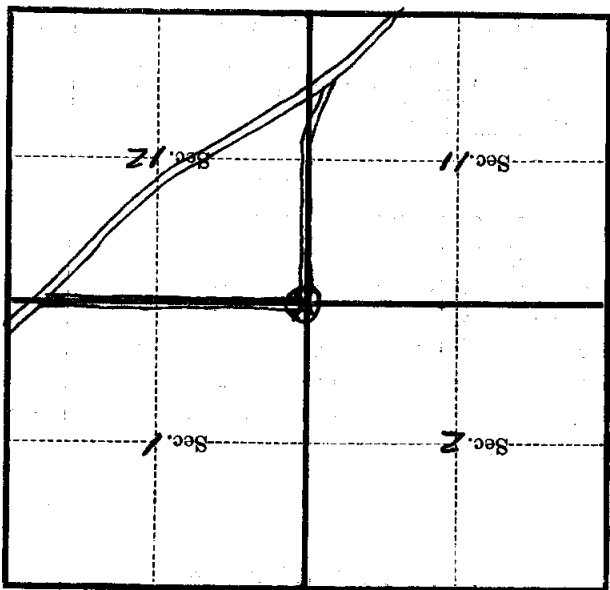
(Title)

Corner again.  
about at point of intersection of R.R.  
N. & S. & R. & E. placed near Tam Post

Give any further facts which will aid in finding this  
0.62 chains distant.

from which this Corner bears N 63° 30' E  
side of Tree

tree 7 inches diameter, on the East  
Metal Location Poster is on a Spruce



(Make sketch of topography near Corner)

T. 149 N. R. 26 W. 5th Mer.