

U. S. Department of Agriculture

FOREST SERVICE

*P 27  
36  
N 17*

Chippewa NATIONAL FOREST

CORNERS OF THE PUBLIC SURVEY

T. 149 N R. 26 W 5th Mer.

Section Corner common to Sections  
14, 15, 22, and 23

Corner consists of a Cedar Post (~~rod~~) in place

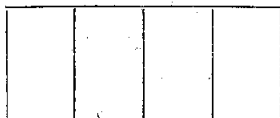
State condition Good

Dimensions above ground 36 inches

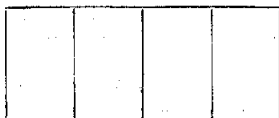
Sketch grooves, letters, figures, or notches, on proper face or edge.

CARDINAL POSITION

DIAGONAL POSITION



N W S E



NW SW SE NE

Mound of \_\_\_\_\_ is located \_\_\_\_\_

Pits are located \_\_\_\_\_

Sketch markings of Bearing Trees (or Rocks) in proper box and fill blanks below, giving bearings from Corner to Trees and Distances in Links.



Species Cedar

Diameter 14"

Bearing S. 73° E

*Lks.* Distance 90

Do you believe this to be a genuine Land Office Corner? YES

If not, why? \_\_\_\_\_

J. A. Gjelhaug  
(Signature)

Jr. Civil Eng.  
(Title)

2/3/36  
(Date)

Corner again.

Give any further facts which will aid in finding this

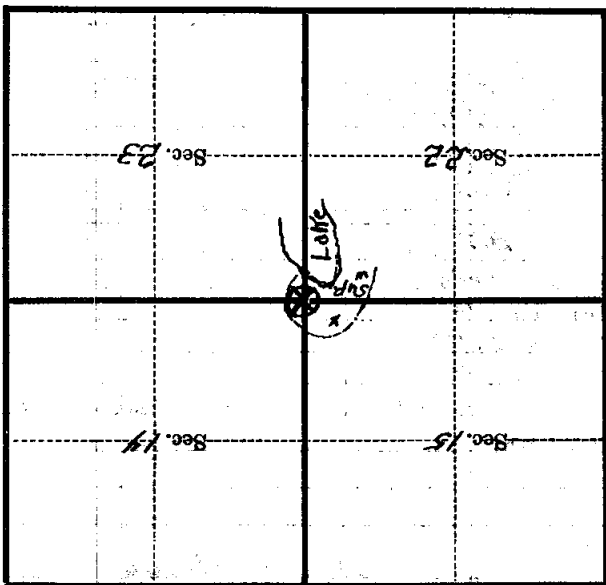
0.98 chains distant.

from which this Corner bears N. 49° W

side of Tree

tree 4 inches diameter, on the NW

Metal Location Poster is on an Oak



(Make sketch of topography near Corner)

T. 149 N. R. 26 W. 5th Mer.