

U. S. Department of Agriculture
FOREST SERVICE

V9
Posted

Chippewa NATIONAL FOREST

CORNERS OF THE PUBLIC SURVEY

T. 149N R. 26W 5th Mer. ✓

Section

Corner common to Sections

29, 28, 32, and 33

Corner consists of a _____ (not) in place

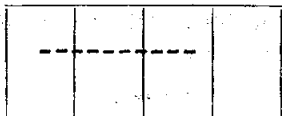
State condition _____

Dimensions above ground _____ inches

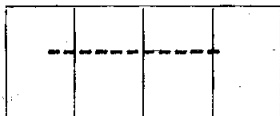
Sketch grooves, letters, figures, or notches, on proper face or edge.

CARDINAL POSITION

DIAGONAL POSITION



N W S E



NW SW SE NE

Mound of _____ is located _____

Pits are located _____

Sketch markings of Bearing Trees (or Rocks) in proper box and fill blanks below, giving bearings from Corner to Trees and Distances in Links.

Illegible			
B. T.			

Species Aspen

Diameter 10"

Bearing N 71° E (Taken from approximate corner).
Distance 32 links

Do you believe this to be a genuine Land Office Corner? Yes

If not, why? _____

H. Bland
(Signature)

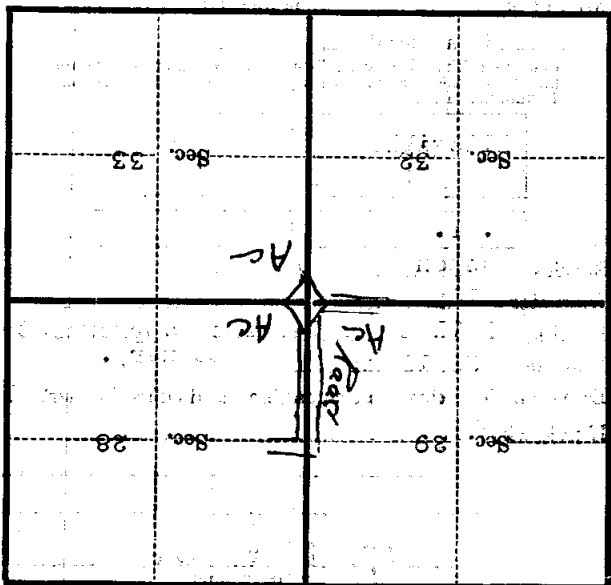
Chief of Party.

3/29/35
(Date)

(Title)

Noted. H. N. Johnson post in road
K. W. Johnson 2-12-34
Corner again.

Give any further facts which will aid in finding this
chains distant.
from which this Corner bears
side of
tree inches diameter, on the
Metal Location Poster is on a
None found.



(Make sketch of topography near Corner.)