

U. S. Department of Agriculture

FOREST SERVICE

Chippewa NATIONAL FOREST

CORNERS OF THE PUBLIC SURVEY

T. 149N. R. 25W. 5th Mer.

Quarter Corner common to Sections

29, and 32

Corner consists of a Cedar post (~~met~~) in place

State condition Good

Dimensions above ground 36 inches

Sketch grooves, letters, figures, or notches, on proper face or edge.

CARDINAL POSITION

DIAGONAL POSITION



Mound of _____ is located _____

_____ Pits are located _____

Sketch markings of Bearing Trees (or Rocks) in proper box and fill blanks below, giving bearings from Corner to Trees and Distances in Links.

0.19 B.T.

AS
32

B.T.

Species Cedar

Diameter 5"

Bearing S.17°W.

115 Distance 12

Do you believe this to be a genuine Land Office Corner? Yes.

If not, why? _____

Found 1967
at H/M

J.A. Gjelhaug

(Signature)

Jr. Civil Eng.

(Title)

1/25/36

(Date)

Corner again.

Give any further facts which will aid in finding this

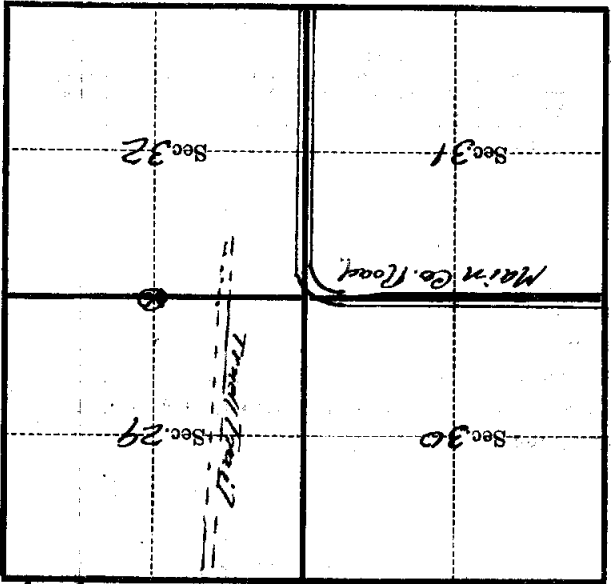
0.16 chains distant.

from which this Corner bears S 85° E.

side of Tree.

tree 6 inches diameter, on the East

Metal Location Poster is on a Cedar



(Make sketch of topography near Corner)

Mer V-7

5th

T. 149N. R. 25W.