

Form 874-9—Revised May, 1918
U. S. Department of Agriculture
FOREST SERVICE

J-13
J-13

Chippewa NATIONAL FOREST

CORNERS OF THE PUBLIC SURVEY

T. 148 N. R. 31 W. 5 th P. Mer.

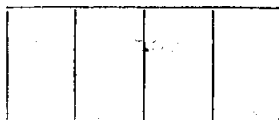
Section _____ Corner common to Sections
9, 10, 15, and 16

Corner consists of an Iron Pipe (not) in place
State condition Good

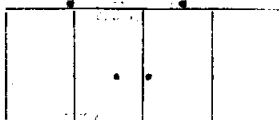
Dimensions above ground 2 inches
Sketch grooves, letters, figures, or notches, on proper face or edge.

CARDINAL POSITION

DIAGONAL POSITION



N W S E



NW SW SE NE

Mound of _____ is located _____

_____ Pits are located _____

Sketch markings of Bearing Trees (or Rocks) in proper box and fill blanks below, giving bearings from Corner to Trees and Distances in Links.

Placed F.S.
Posters



Species Birch Aspen

Diameter 6" 5"

Bearing N. 31° W. S. 21° W.

Distance 30 40

Do you believe this to be a genuine Land Office Corner? Yes

If not, why? _____

K.V. Styler

(Signature)

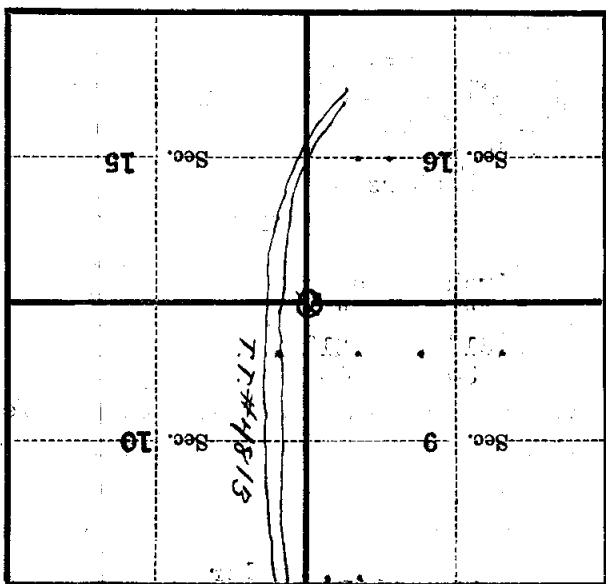
2/24/38

(Date)

Compass Man

(Title)

Metal Location Poster is on a Birch tree 6 inches diameter, on the S.E. side of Tree from which this Corner bears 0.30 chains distant. Give any further facts which will aid in finding this Corner again.



(Make sketch of topography near Corner)

T. 148 N. R. 31 W. S. 4th P. Mer. I-13

Form 874-0—Revised May, 1918
U. S. Department of Agriculture
FOREST SERVICE

J-13

J-13

Chippewa NATIONAL FOREST

CORNERS OF THE PUBLIC SURVEY

T. 148N. R. 31W. 5th P. Mer.

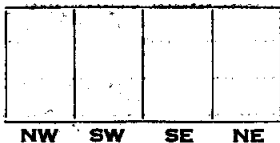
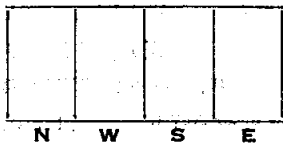
Section Corner common to Sections
9, 10, 15, and 16

Corner consists of an Iron Pipe (~~not~~) in place
State condition Good

Dimensions above ground 2 inches
Sketch grooves, letters, figures, or notches, on proper face or edge.

CARDINAL POSITION

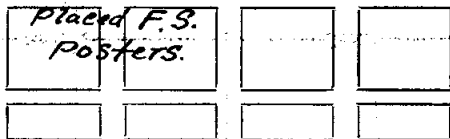
DIAGONAL POSITION



Mound of _____ is located _____

Pits are located _____

Sketch markings of Bearing Trees (or Rocks) in proper box and fill blanks below, giving bearings from Corner to Trees and Distances in Links.



Species Birch Aspen

Diameter 6" 5"

Bearing N. 31° W. S. 21° W.

Distance 30 40

Do you believe this to be a genuine Land Office Corner? Yes

If not, why? _____

K.V. Styler

(Signature)

Compass Man.

(Title)

2/24/30

(Date)

Corner again.
Give any further facts which will aid in finding this

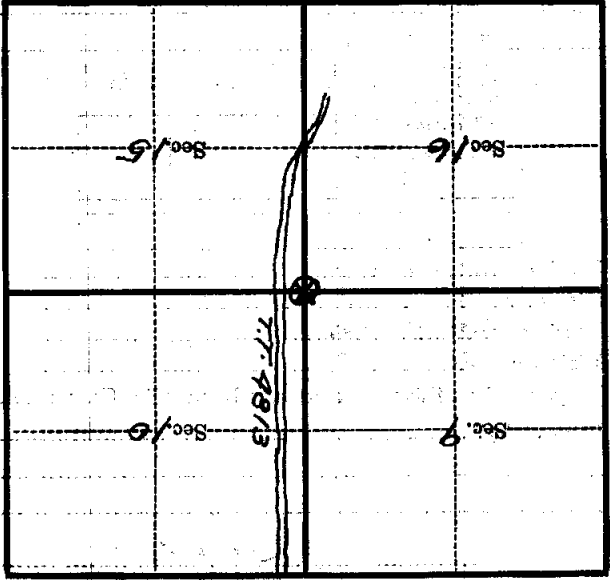
0.30 chains distant.

from which this Corner bears S. 31° E.

side of tree

tree 6 inches diameter, on the S.E.

Metal Location Poster is on a Birch



(Make sketch of topography near Corner)

5-13 Mer. 5-13

T. 148 N. R. 31 W.