

Form 874-B—Revised May, 1918
 U. S. Department of Agriculture
 FOREST SERVICE

X-9
 X-9

Chippewa NATIONAL FOREST

CORNERS OF THE PUBLIC SURVEY

T. 148N. R. 31W. 513P. Mer.

Quarter Corner common to Sections
 _____, 32, and 33

Corner consists of a _____ (not) in place
 State condition _____

Dimensions above ground _____ inches
 Sketch grooves, letters, figures, or notches, on proper face or edge.

CARDINAL POSITION

DIAGONAL POSITION

--	--	--	--

N W S E

--	--	--	--

NW SW SE NE

Meund of _____ is located _____

Pits are located _____

Sketch markings of Bearing Trees (or Rocks) in proper box and fill blanks below, giving bearings from Corner to Trees and Distances in Links.

0719 FTs.

<u>S 32</u>	<u>S 33</u>		
<u>13T</u>	<u>13T</u>		

Species Elm Basswood Elm Bass
 Diameter 8" 10" 8" 8"
 Bearing S 47° W N 72° E S 42° W N 87° E
 Distance 23 24 30 20

Do you believe this to be a genuine Land Office Corner? Yes.

If not, why? _____

J. P. Gjelhaug
 (Signature)

St. Civil Eng
 (Title)

2/2/38
 (Date)

Corner again.

Give any further facts which will aid in finding this

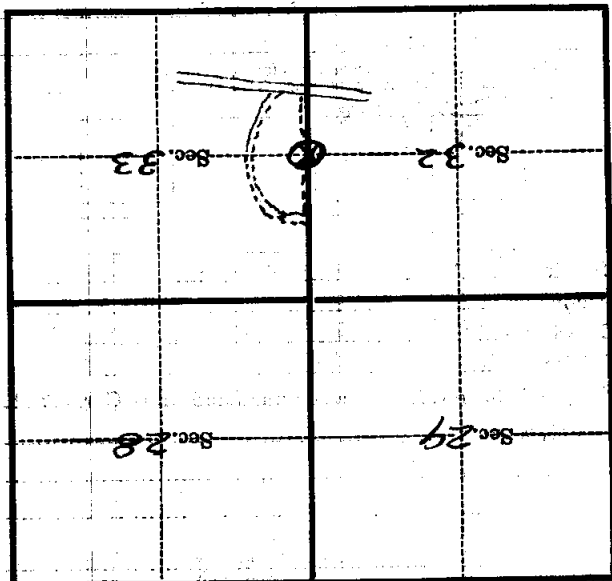
0.23 chains distant.

from which this Corner bears S. 77° W.

side of *tree*

tree 12 inches diameter, on the *West*

Metal Location Poster is on a *Basswood*



(Make sketch of topography near Corner)

X-9
Ver.

5.13 P.

T. 148 N. R. 31 W.

Form 874-9—Revised May, 1918
U. S. Department of Agriculture
FOREST SERVICE

X-9
X-9

Chippewa NATIONAL FOREST

CORNERS OF THE PUBLIC SURVEY

T. 148 N. R. 31 W. 5th P. Mer.

Quarter Corner common to Sections

32, and 33

Corner consists of a (not) in place

State condition

Dimensions above ground inches

Sketch grooves, letters, figures, or notches, on proper face or edge.

CARDINAL POSITION

DIAGONAL POSITION

N	W	S	E

NW	SW	SE	NE

Mound of is located

Pits are located

Sketch markings of Bearing Trees (or Rocks) in proper box and fill blanks below, giving bearings from Corner to Trees and Distances in Links.

Orig. S.32	B.T. S.33		
------------	-----------	--	--

B.T.	B.T.		
------	------	--	--

Species Elm Basswood

Diameter 8" 10"

Bearing S.47°W. N.72°E.

Distance 23 24

Do you believe this to be a genuine Land Office Corner?

If not, why?

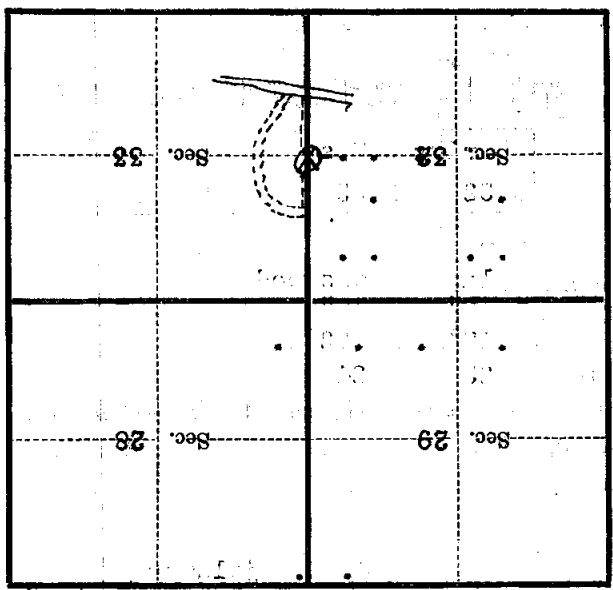
J. A. Gjelhaug
(Signature)

2/2/38
(Date)

Jr. Civil Eng.
(Title)

Metal Location Poster is on a **Besswodd** tree **12** inches diameter, on the **West** side of **Tree** from which this Corner bears **S. 77° W.** **0.23** chains distant.

Give any further facts which will aid in finding this Corner again.



(Make sketch of topography near Corner)

T. 148 N. R. 31 W. 5th P.M. Mer.

X-9
P.M. Mer.
X-9