

Form 874-9—Revised May, 1918
U. S. Department of Agriculture
FOREST SERVICE

Y-5
Y-5

NATIONAL FOREST
CORNERS OF THE PUBLIC SURVEY

T. 148 R. 31 Mer.

16 cor Corner common to Sections
29, 36, South of 1 and 4

Corner consists of a Scribed stake + Iron Pipe (not) in place 6"

State condition poor ht

Dimensions above ground 2' inches

Sketch grooves, letters, figures, or notches, on proper face or edge.

CARDINAL POSITION

DIAGONAL POSITION

--	--	--	--

N W S E

--	--	--	--

NW SW SE NE

Mound of _____ is located _____

Pits are located _____

Sketch markings of Bearing Trees (or Rocks) in proper box and fill blanks below, giving bearings from Corner to Trees and Distances in Links.

<u>No</u>	<u>BTS</u>	<u>found</u>	

Species _____

Diameter _____

Bearing _____

Distance _____

Do you believe this to be a genuine Land Office Corner? _____

If not, why? _____

(Signature)

(Date)

(Title)

Corner again.

Line ~~with~~ N-S

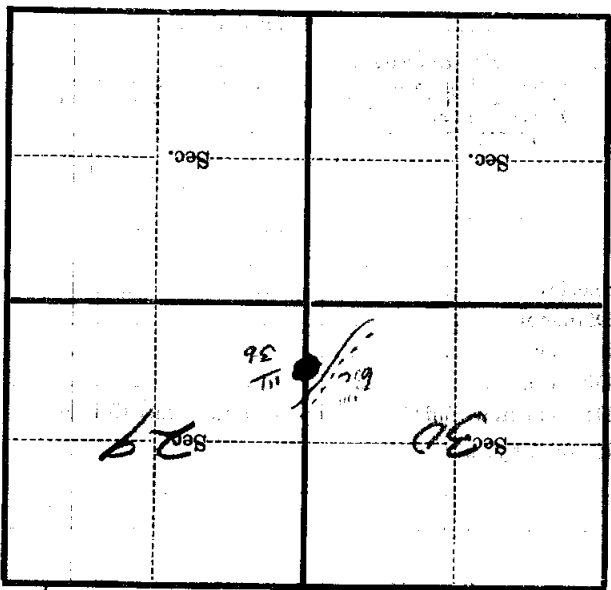
Give any further facts which will aid in finding this

chains distant.

from which this Corner bears 5 - 12 feet side of

tree 8 inches diameter, on the South

Metal Location Poster is on a ~~corner~~



(Make sketch of topography near Corner)

T. R.

X-5
M.G.
4-5

Form 874-9—Revised May, 1918
U. S. Department of Agriculture
FOREST SERVICE

Y-5
Y-5

Chippewa NATIONAL FOREST

CORNERS OF THE PUBLIC SURVEY

T. 148 N. R. 31 W. 5th Mer.
1/16

Corner common to Sections
30, and 29

Corner consists of a Cedar Stake (now) in place
State condition Good

Dimensions above ground 24 x 2 x 3 inches
Sketch grooves, letters, figures, or notches, on proper face or edge.
CARDINAL POSITION DIAGONAL POSITION

N	W	S	E

NW	SW	SE	NE

Mound of _____ is located _____

Pits are located _____

Sketch markings of Bearing Trees (or Rocks) in proper box and fill blanks below, giving bearings from Corner to Trees and Distances in Links.

			<u>1/16</u>
			<u>BT</u>

Species _____ Cedar

Diameter _____ 3"

Bearing _____ S. 10° W.

Distance _____ .20 ch.

Do you believe this to be a genuine Land Office Corner? Yes

If not, why? _____

T Fairbanks

Ted Fairbanks

(Signature)

Enrollee

(Title)

3/24/28

(Date)

Blacked line North & South

Corner again.

Give any further facts which will aid in finding this

chains distant.

from which this Corner bears

S. 10° W.

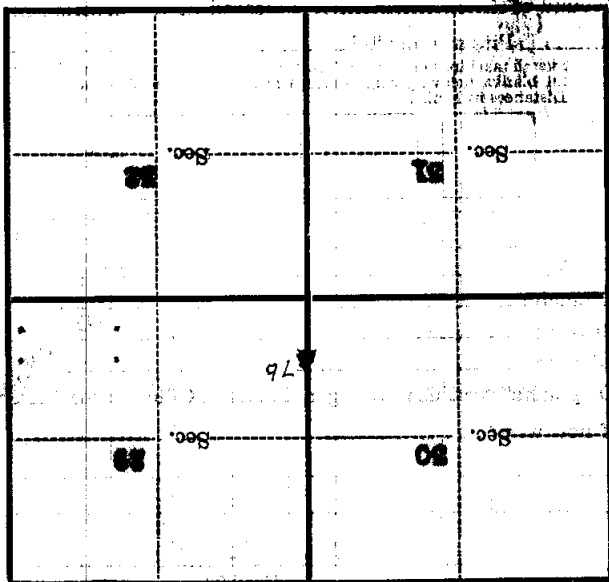
side of

Tree

tree 5 inches diameter, on the **South**

Metal Location Poster is on a

Cedar



(Make sketch of topography near Corner)

T. 148 N.

R. 51 W.

Sec. 81

Ms. 5