

Form 974-9—Revised May, 1918
 U. S. Department of Agriculture
 FOREST SERVICE

N-17

Chippewa NATIONAL FOREST

CORNERS OF THE PUBLIC SURVEY

T. 148 R. 29 Mer. 5
 Sec. _____ Corner common to Sections

14, 15, 23, and 22 ^{25'} - 7 1/2°
 Corner consists of a Post Offset (not) in place

State condition Good

Dimensions above ground 4' high 6" dia. inches
 Sketch grooves, letters, figures, or notches, on proper face or edge.

CARDINAL POSITION

DIAGONAL POSITION

| | | | |
|------|---|---|---|
| None | | | |
| N | W | S | E |

| | | | |
|------|----|----|----|
| None | | | |
| NW | SW | SE | NE |

Mound of _____ is located _____

Pits are located _____

Sketch markings of Bearing Trees (or Rocks) in proper box and fill blanks below, giving bearings from Corner to Trees and Distances in Links.

| | | | |
|------|-----|-----|----------------|
| S.15 | S14 | S23 | GROWTH Over |
| | | | |

| | | | | |
|----------|--------------------|--------------------|-------------------|--------------------|
| Species | <u>N. Pine</u> | <u>N. Pine</u> | <u>N. Pine</u> | <u>N. Pine</u> |
| Diameter | <u>16"</u> | <u>18"</u> | <u>20"</u> | <u>12"</u> |
| Bearing | <u>N38°W</u> | <u>N40E</u> | <u>S62E</u> | <u>S32W</u> |
| Distance | <u>1 ch. 60 l.</u> | <u>1 ch. 50 l.</u> | <u>2 ch. 7 l.</u> | <u>1 ch. 31 l.</u> |

Do you believe this to be a genuine Land Office Corner? _____

If not, why? Yes

William L. Johnson
 (Signature)

2-19-35
 (Date)

Estimator
 (Title)

Corner again.
 Exact Cor is in road
 grade

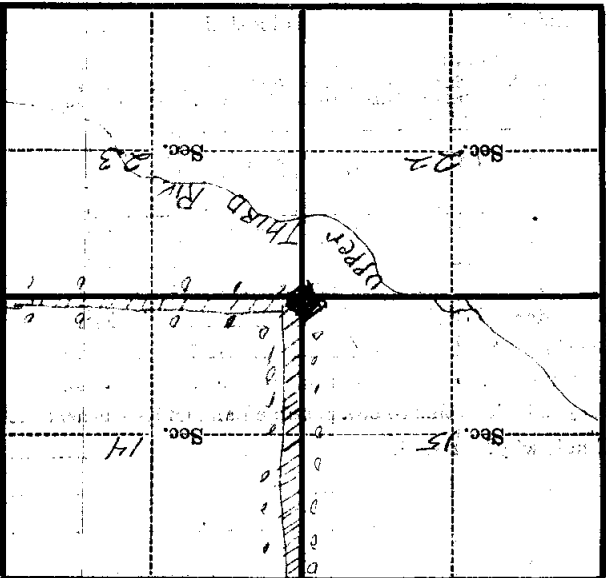
Give any further facts which will aid in finding this
 corner distant.

From which this Corner bears
 23' 73°

side of Post.

tree 6" inches diameter, on the N.E.

Metal Location Poster is on a
 WHITE POST



(Make sketch of topography near Corner)

T. 148 N. R. 29 W. S. Mer.

U. S. Department of Agriculture
FOREST SERVICE

protected N 17

Chippewa NATIONAL FOREST

CORNERS OF THE PUBLIC SURVEY

T. 148 R. 29 W. 5 Mer.
Section Corner common to Sections

14, 15, 22, and 23
Corner consists of a POST offset 25' - 2 1/2" (not) in place
State condition Good

Dimensions above ground 4" high - 6" dia. inches
Sketch grooves, letters, figures, or notches, on proper face or edge.

CARDINAL POSITION

DIAGONAL POSITION

| | | | |
|---|-------------|---|---|
| | <i>None</i> | | |
| N | W | S | E |

| | | | |
|----|-------------|----|----|
| | <i>None</i> | | |
| NW | SW | SE | NE |

Mound of _____ is located _____

Pits are located _____

Sketch markings of Bearing Trees (or Rocks) in proper box and fill blanks below, giving bearings from Corner to Trees and Distances in Links.

| | | | |
|-------------|-------------|-------------|-------------------|
| <i>S 15</i> | <i>S 14</i> | <i>S 23</i> | <i>Green over</i> |
| | | | |

| | | | | |
|----------|----------------|----------------|----------------|----------------|
| Species | <i>N. Pine</i> | <i>L. Pine</i> | <i>N. Pine</i> | <i>N. Pine</i> |
| Diameter | <i>16"</i> | <i>18"</i> | <i>20"</i> | <i>12"</i> |
| Bearing | <i>N 35° W</i> | <i>N 40° E</i> | <i>S 62° E</i> | <i>S 32° W</i> |
| Distance | <i>1 c. 62</i> | <i>1 c. 56</i> | <i>2 c. 76</i> | <i>1 c. 31</i> |

Do you believe this to be a genuine Land Office Corner? _____

If not, why? Yes

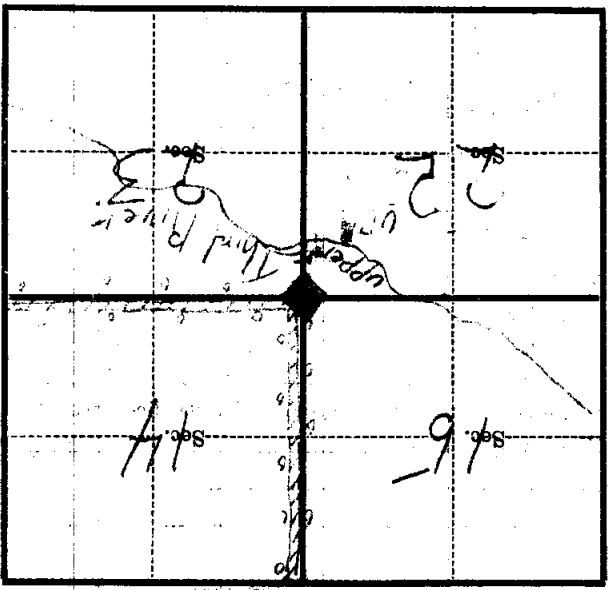
Matthew J. Johnson
(Signature)

2-19-35
(Date)

Ostentator
(Title)

Corner again.
 East Corner 15 m
 road grade

Give any further facts which will aid in finding this
 corner distant.
 from which this Corner bears
 side of Post
 6 inches diameter, on the N.E.
 Metal Location Poster is on a White Post



(Make sketch of topography near Corner)

T. 148 N R. 29 W 5 Mer.

U. S. Department of Agriculture

FOREST SERVICE

THIS IS OK
11-10-60 RHM

N17

Chippewa NATIONAL FOREST

CORNERS OF THE PUBLIC SURVEY

T. 148 N R. 29 W 5th P. Mer.

Section Corner common to Sections

14, 15, 22, and 23

Corner consists of a Wood post (not) in place

State condition Good

Dimensions above ground 36 inches

Sketch grooves, letters, figures, or notches, on proper face or edge.

CARDINAL POSITION

DIAGONAL POSITION

| | | | |
|--|--|--|--|
| | | | |
|--|--|--|--|

N W S E

| | | | |
|--|--|--|--|
| | | | |
|--|--|--|--|

NW SW SE NE

Mound of is located

Pits are located

Sketch markings of Bearing Trees (or Rocks) in proper box and fill blanks below, giving bearings from Corner to Trees and Distances in Links.

County B.T.

| | | | |
|---------|--|--|--|
| S 14 | | | |
|---------|--|--|--|

| | | | |
|------|--|--|--|
| B.T. | | | |
|------|--|--|--|

Species R. Pine

Diameter 16"

Bearing N. 38° 30' E

Distance 140

Do you believe this to be a genuine Land Office Corner? Yes

If not, why?

C.T. VanSpankeren

(Signature)

Compass Man

(Title)

12/13/38

(Date)

Corner again.
Give any further facts which will aid in finding this

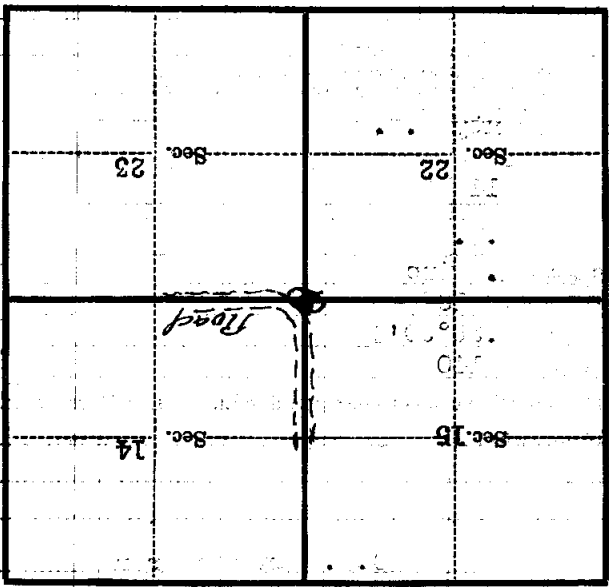
0.50 chains distant.

From which this Corner bears N.58°E.

side of tree

tree 4 inches diameter, on the N.E.

Metal Location Poster is on a Birch



(Make sketch of topography near Corner)

T. 148 N. R. 29 W. 5th P. Mer.